

0. MIPAS Daily Report for level 0 products

[0.1 General Info](#)

[0.2 Instrument Operational Performance Parameters](#)

[0.3 ADF monitoring](#)

0.1 General Info

This report contains a daily analysis on parameters extracted from MIPAS level 0 data (The MIP_NL__0P product).

0.1.1 Report summary

The table below shows general characteristics of the data that are included into this report.

Item	Value
Report version	v1.6 08-11-2010
Time of report generation	19FEB2012 05:22:14
Data source version	KSPT_L0/4504-N
Processing scope for products	14FEB2012 00:00:00 to 15FEB2012 00:00:00
Start time of first product within scope	14FEB2012 01:31:09
Stop time of last product within scope	15FEB2012 00:58:09
Total number of level 0 products	15
Number of level 0 products with errors	1

0.1.2 Product Quality Indicators per product

The following table shows a summary for each product used in this report.

#	Product name	Start time	Stop time	Prod err	ISP err sign	ISP miss sign	ISP disc sign	rs sign
0	MIP_NL__0PNPDE20120214_013109_000044223111_00347_52085_1026.N1	14FEB2012 01:31:09	14FEB2012 02:44:51	0	0	0	0	0
1	MIP_NL__0PNPDE20120214_024420_000061583111_00348_52086_1027.N1	14FEB2012 02:44:20	14FEB2012 04:26:58	0	0	0	0	0
2	MIP_NL__0PNPDE20120214_042625_000060543111_00349_52087_1028.N1	14FEB2012 04:26:25	14FEB2012 06:07:19	0	0	0	0	0
3	MIP_NL__0PNPDK20120214_060645_000041363111_00350_52088_8520.N1	14FEB2012 06:06:45	14FEB2012 07:15:42	0	0	0	0	0
4	MIP_NL__0PNPDK20120214_071443_000060873111_00351_52089_8521.N1	14FEB2012 07:14:43	14FEB2012 08:56:10	1	1	0	0	0
5	MIP_NL__0PNPDK20120214_085511_000059223111_00352_52090_8522.N1	14FEB2012 08:55:11	14FEB2012 10:33:54	0	0	0	0	0
6	MIP_NL__0PNPDK20120214_103216_000060003111_00353_52091_8523.N1	14FEB2012 10:32:16	14FEB2012 12:12:15	0	0	0	0	0
7	MIP_NL__0PNPDK20120214_121117_000060963111_00354_52092_8524.N1	14FEB2012 12:11:17	14FEB2012 13:52:52	0	0	0	0	0
8	MIP_NL__0PNPDK20120214_135116_000058623111_00355_52093_8525.N1	14FEB2012 13:51:16	14FEB2012 15:28:58	0	0	0	0	0
9	MIP_NL__0PNPDK20120214_152722_000060253111_00356_52094_8526.N1	14FEB2012 15:27:22	14FEB2012 17:07:47	0	0	0	0	0
10	MIP_NL__0PNPDK20120214_170659_000059543111_00357_52095_8527.N1	14FEB2012 17:06:59	14FEB2012 18:46:12	0	0	0	0	0
11	MIP_NL__0PNPDK20120214_184510_000058873111_00358_52096_8528.N1	14FEB2012 18:45:10	14FEB2012 20:23:17	0	0	0	0	0
12	MIP_NL__0PNPDE20120214_202140_000044253111_00359_52097_1032.N1	14FEB2012 20:21:40	14FEB2012 21:35:25	0	0	0	0	0
13	MIP_NL__0PNPDE20120214_213418_000062463111_00359_52097_1033.N1	14FEB2012 21:34:18	14FEB2012 23:18:24	0	0	0	0	0
14	MIP_NL__0PNPDE20120214_231722_000060483111_00360_52098_1034.N1	14FEB2012 23:17:22	15FEB2012 00:58:09	0	0	0	0	0

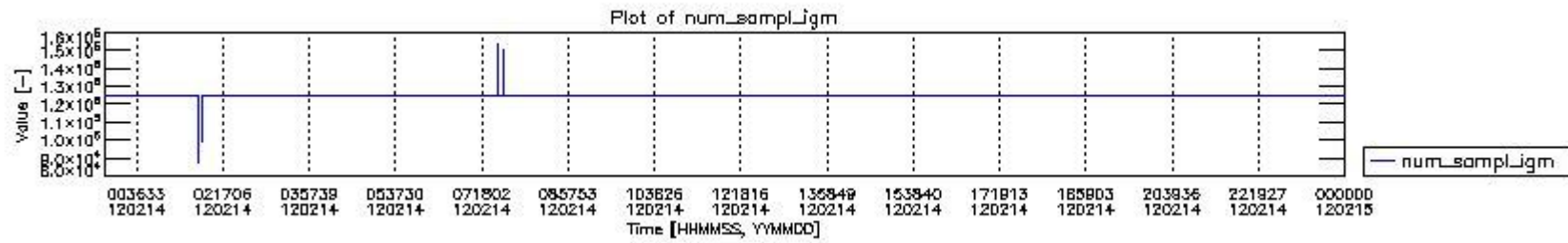
0.2 Instrument Operational Performance Parameters

The following plots give an overview of various instrument parameters for this day. The instrument parameters are part of the auxiliary data field within the source packets of the MIP_NL__0P product. The auxiliary data is normally included twice per interferogram. Note that only the first packet is currently included in monitoring.

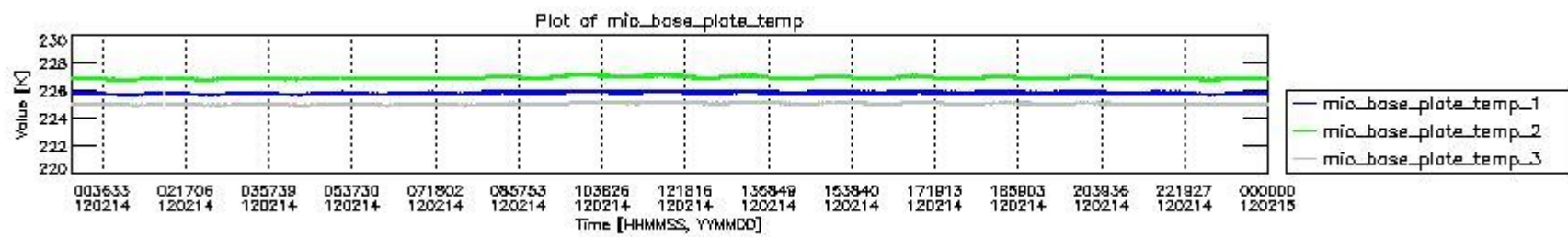
The following table shows the counts of various interferogram number of samples

Number of igm samples	Count [#]	Count [%]
87798	1	0.0024141178
96233	1	0.0024141178
98773	1	0.0024141178

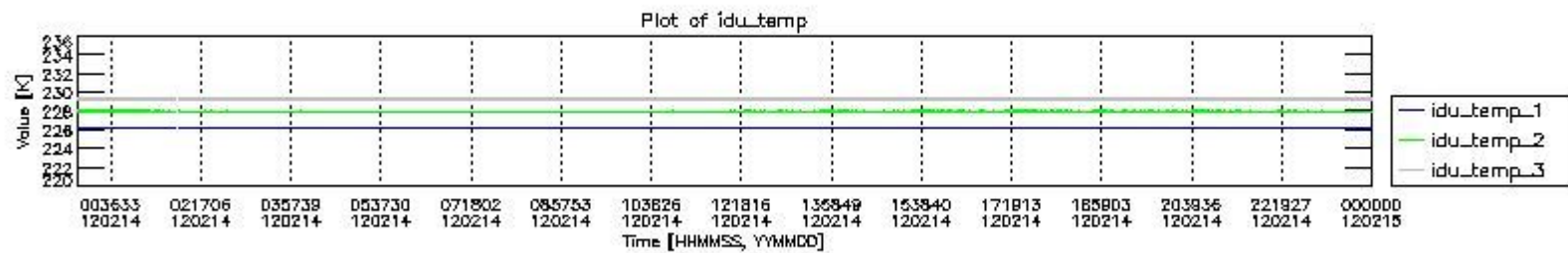
116365	1	0.0024141178
123250	1	0.0024141178
124025	1	0.0024141178
124800	38484	92.904908
124803	2927	7.0661227
127531	1	0.0024141178
129315	1	0.0024141178
147663	1	0.0024141178
149447	1	0.0024141178
150394	1	0.0024141178
153962	1	0.0024141178



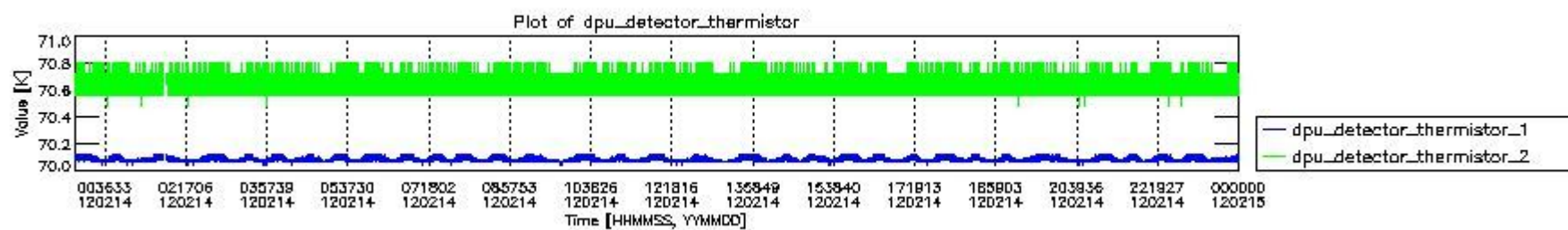
mipas_daily_report_level0_KSPT_L0_4504_N_20120214_0.PNG



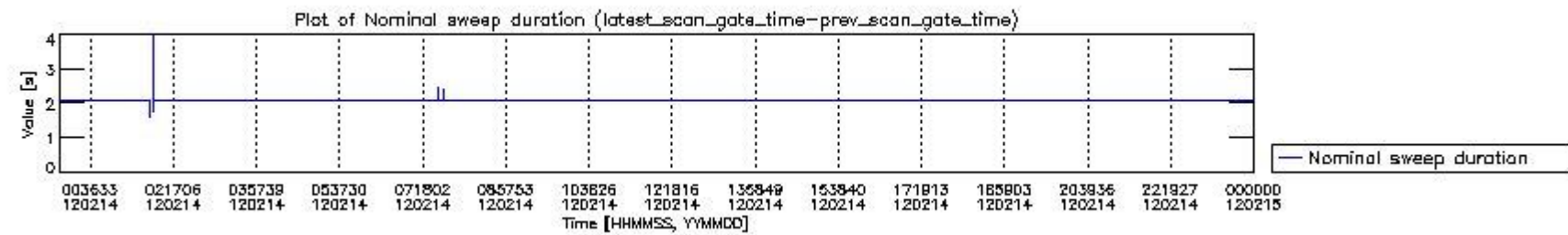
mipas_daily_report_level0_KSPT_L0_4504_N_20120214_1.PNG



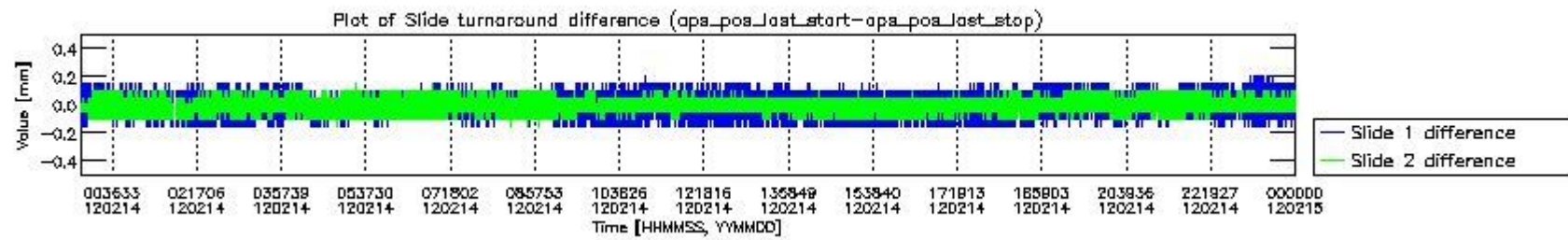
mipas_daily_report_level0_KSPT_L0_4504_N_20120214_2.PNG



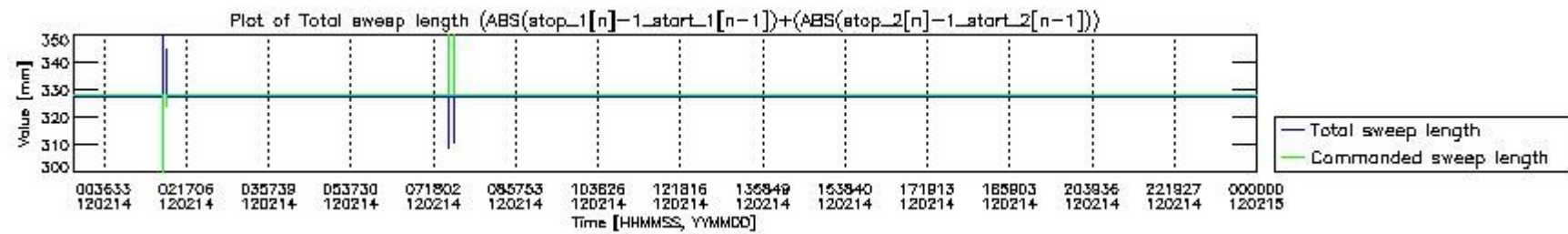
mipas_daily_report_level0_KSPT_L0_4504_N_20120214_3.PNG



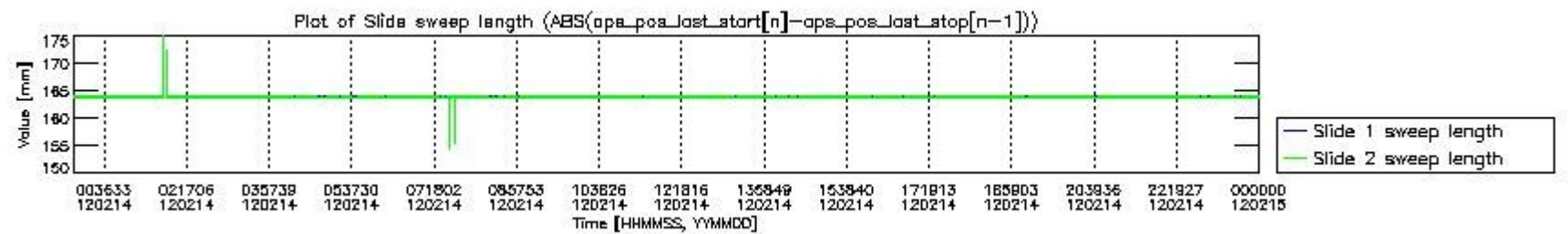
mipas_daily_report_level0_KSPT_L0_4504_N_20120214_4.PNG



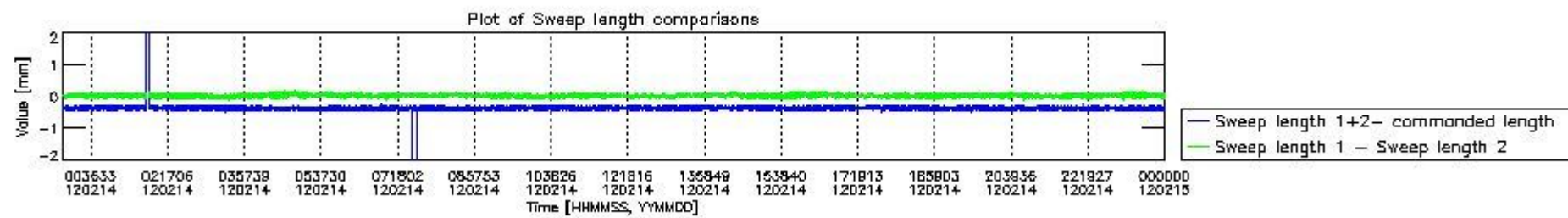
mipas_daily_report_level0_KSPT_L0_4504_N_20120214_5.PNG



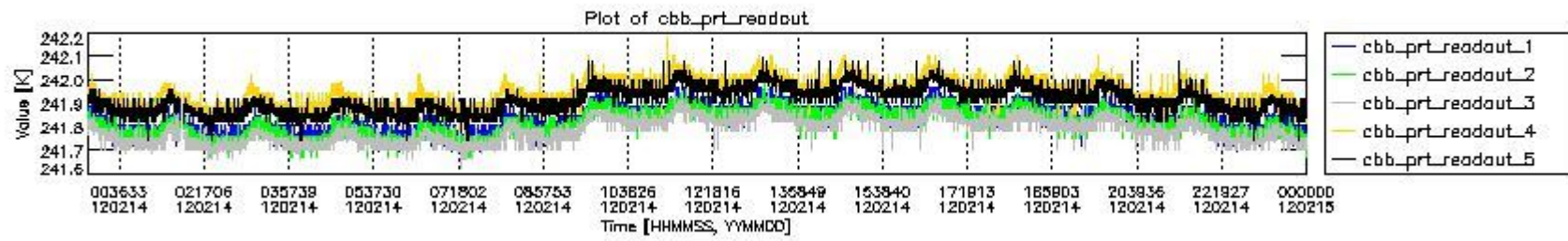
mipas_daily_report_level0_KSPT_L0_4504_N_20120214_6.PNG



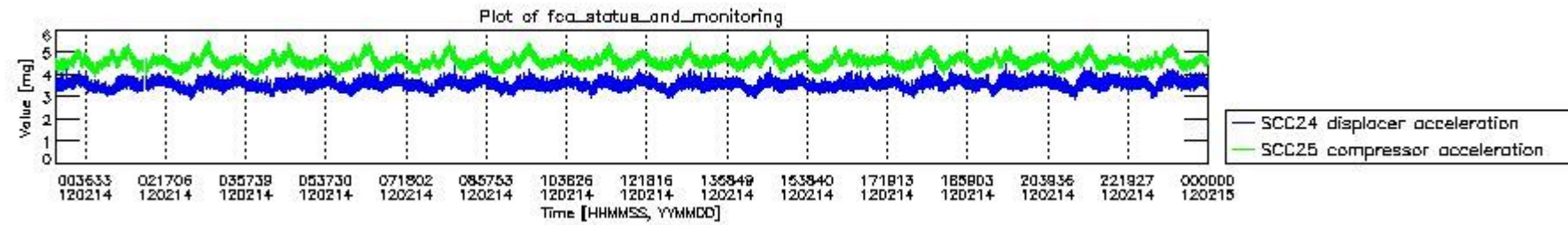
mipas_daily_report_level0_KSPT_L0_4504_N_20120214_7.PNG



mipas_daily_report_level0_KSPT_L0_4504_N_20120214_8.PNG



mipas_daily_report_level0_KSPT_L0_4504_N_20120214_9.PNG

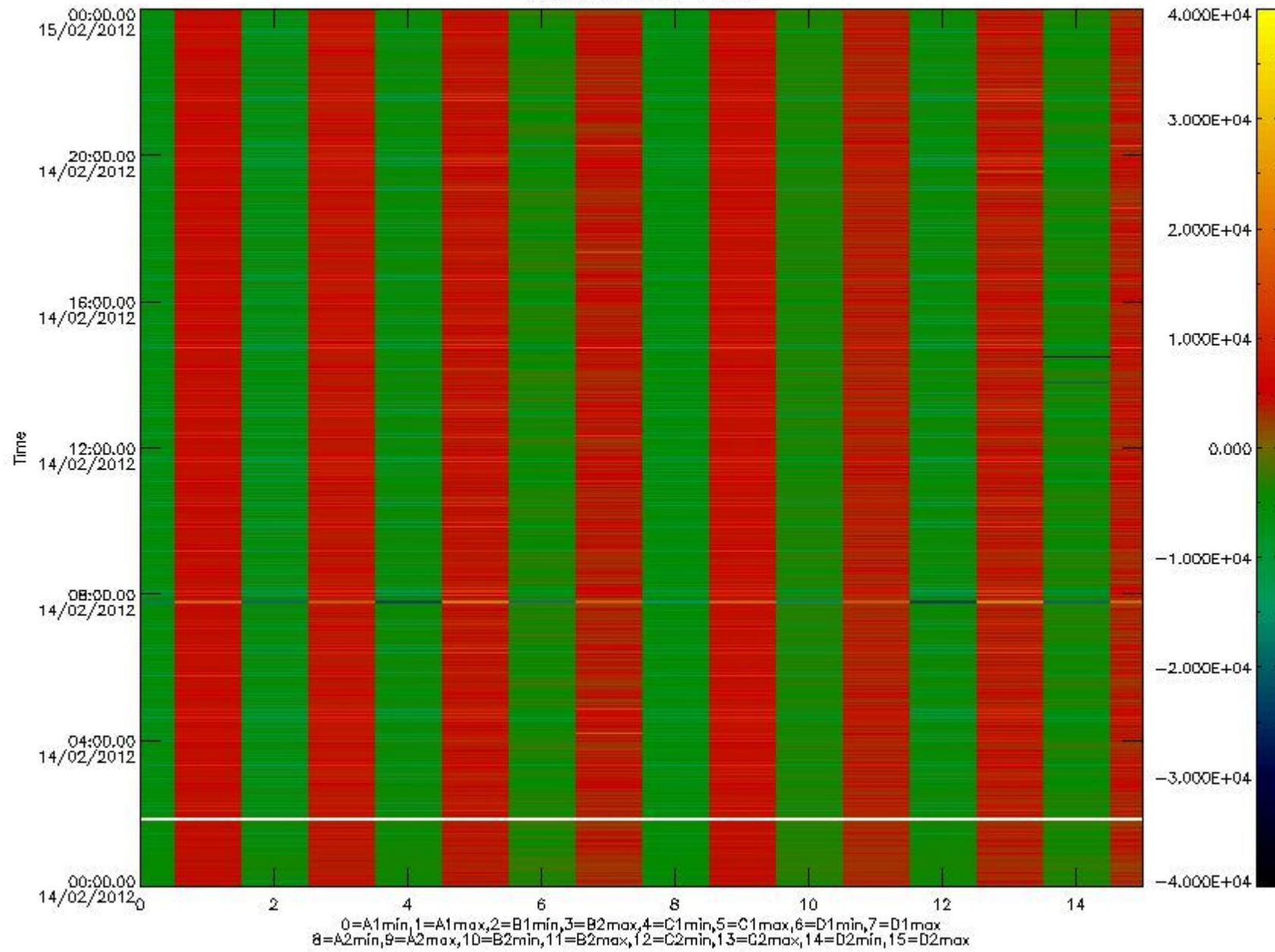


mipas_daily_report_level0_KSPT_L0_4504_N_20120214_10.PNG

The following table shows channel statistics for all channels for this day.

Channel	Min	Max	ADC
A1	-17131	18029	16bit
B1	-18795	16330	16bit
C1	-22116	21989	16bit
D1	-22665	32767	16bit
A2	-14957	18247	16bit
B2	-16480	16313	16bit
C2	-23047	24458	16bit
D2	-32768	26076	16bit

MIPNLOP_MIPSOUPAC_aux_fields_igm_cal, channel statistics plot
Colour indicates value.



mipas_daily_report_level0_KSPT_L0_4504_N_20120214_11.PNG

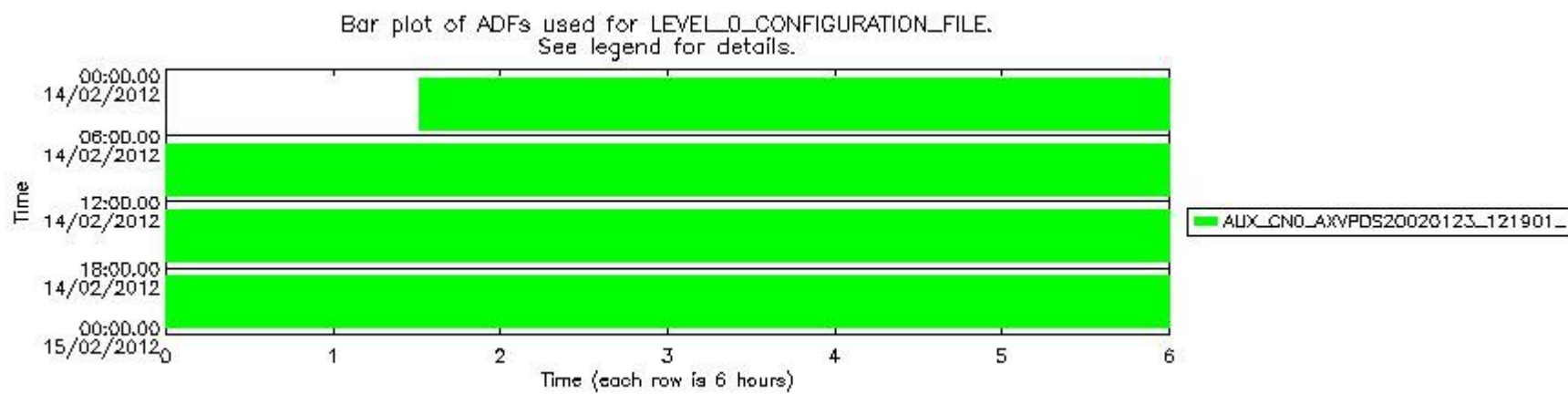
0.3 ADF monitoring

The use of ADFs is shown in two ways:

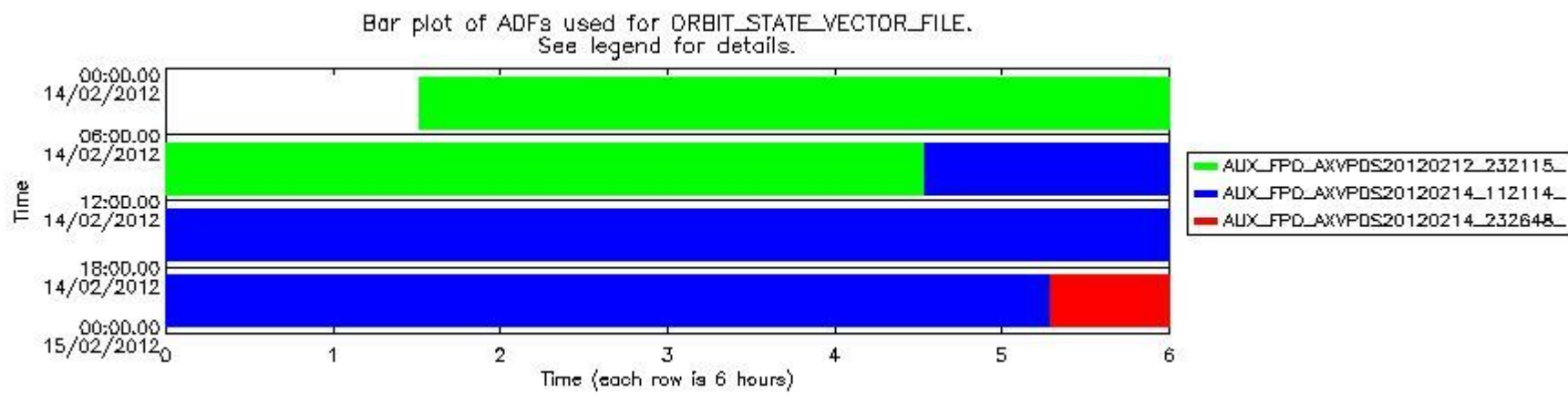
1. By means of two tables that can be used to find the ADF used for a specific product.
2. By means of plots that show changes in ADF using colours.

Number	ADF
0	AUX_CN0_AXVPDS20020123_121901_20020101_000000_20200101_000000
1	AUX_FPO_AXVPDS20120212_232115_20120212_194051_20120222_201416
2	AUX_FPO_AXVPDS20120214_112114_20120213_190406_20120223_211744
3	AUX_FPO_AXVPDS20120214_232648_20120214_182721_20120224_204059

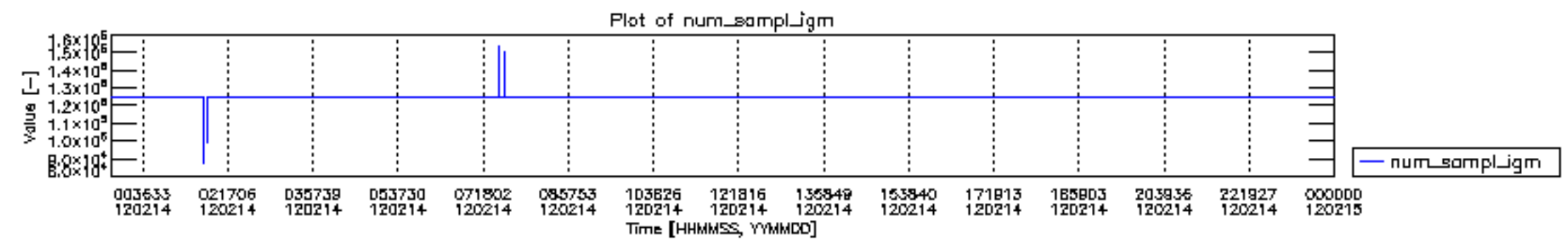
Number	Product name	#CNO	#FPO
0	MIP_NL__0PNPDE20120214_013109_000044223111_00347_52085_1026.N1	0	1
1	MIP_NL__0PNPDE20120214_024420_000061583111_00348_52086_1027.N1	0	1
2	MIP_NL__0PNPDE20120214_042625_000060543111_00349_52087_1028.N1	0	1
3	MIP_NL__0PNPDK20120214_060645_000041363111_00350_52088_8520.N1	0	1
4	MIP_NL__0PNPDK20120214_071443_000060873111_00351_52089_8521.N1	0	1
5	MIP_NL__0PNPDK20120214_085511_000059223111_00352_52090_8522.N1	0	1
6	MIP_NL__0PNPDK20120214_103216_000060003111_00353_52091_8523.N1	0	2
7	MIP_NL__0PNPDK20120214_121117_000060963111_00354_52092_8524.N1	0	2
8	MIP_NL__0PNPDK20120214_135116_000058623111_00355_52093_8525.N1	0	2
9	MIP_NL__0PNPDK20120214_152722_000060253111_00356_52094_8526.N1	0	2
10	MIP_NL__0PNPDK20120214_170659_000059543111_00357_52095_8527.N1	0	2
11	MIP_NL__0PNPDK20120214_184510_000058873111_00358_52096_8528.N1	0	2
12	MIP_NL__0PNPDE20120214_202140_000044253111_00359_52097_1032.N1	0	2
13	MIP_NL__0PNPDE20120214_213418_000062463111_00359_52097_1033.N1	0	2
14	MIP_NL__0PNPDE20120214_231722_000060483111_00360_52098_1034.N1	0	3

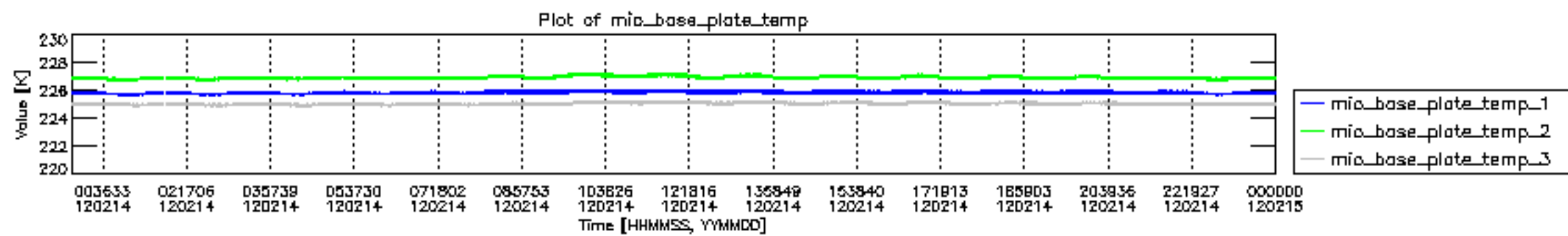


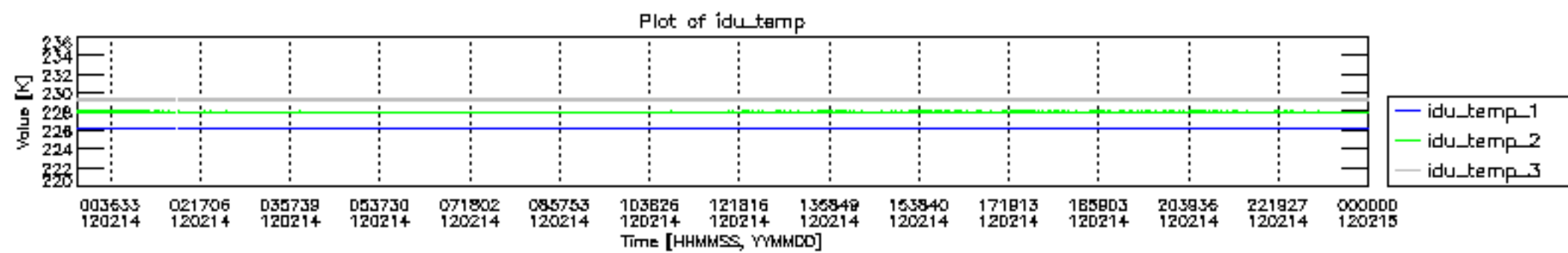
mipas_daily_report_level0_KSPT_L0_4504_N_20120214_12.PNG

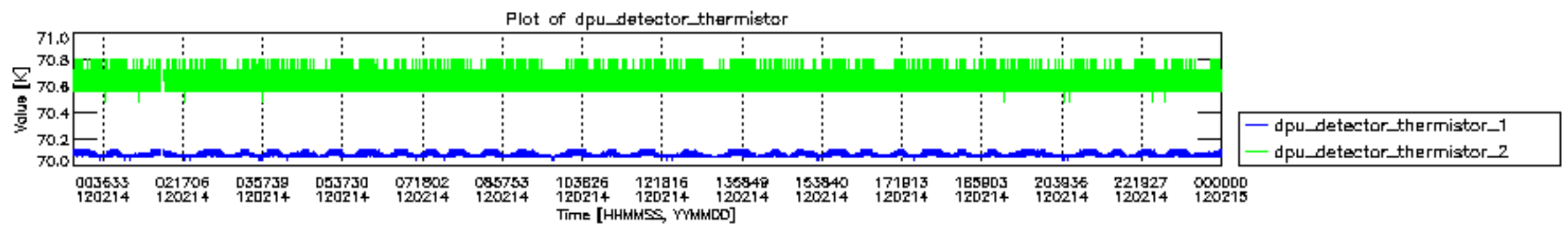


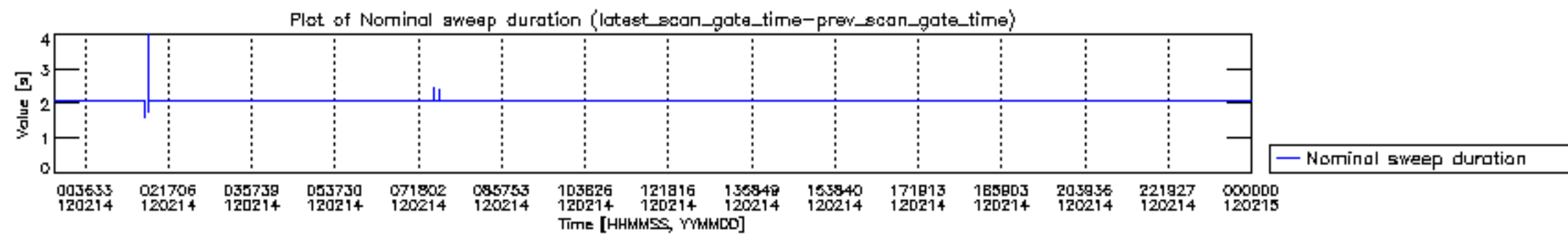
mipas_daily_report_level0_KSPT_L0_4504_N_20120214_13.PNG

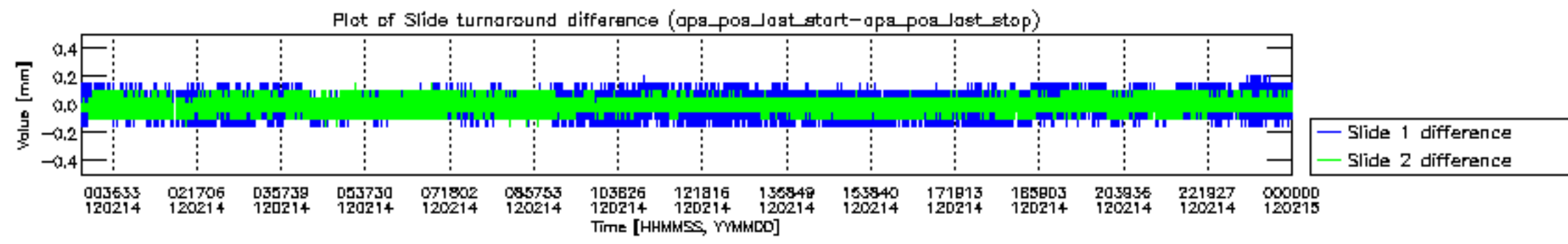


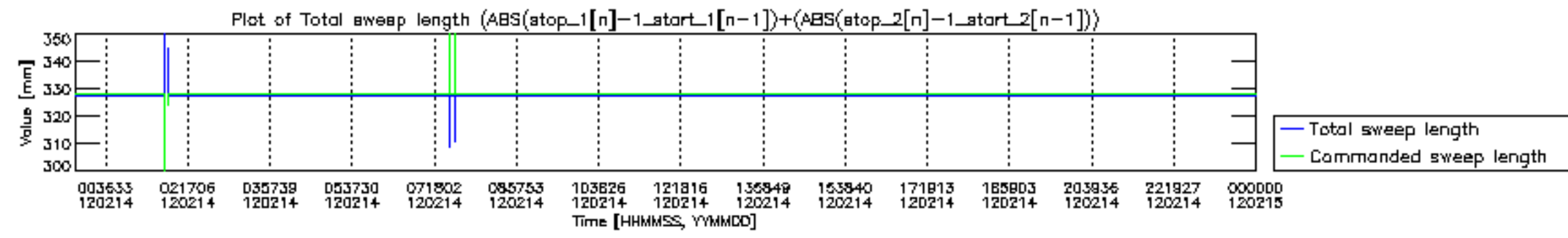


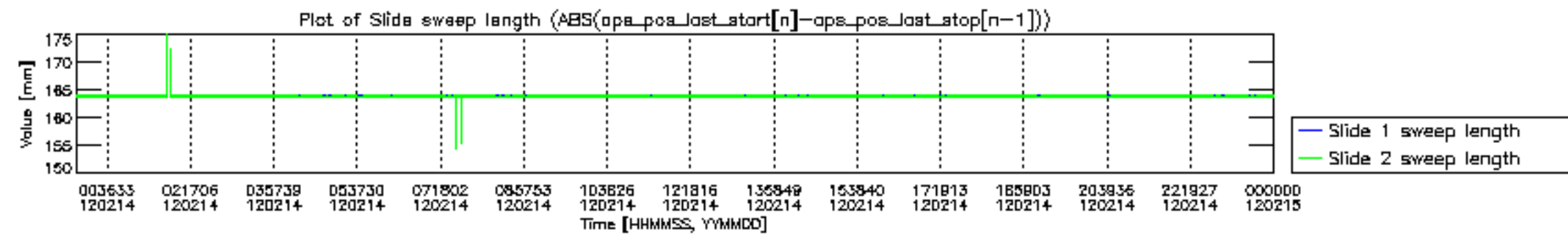


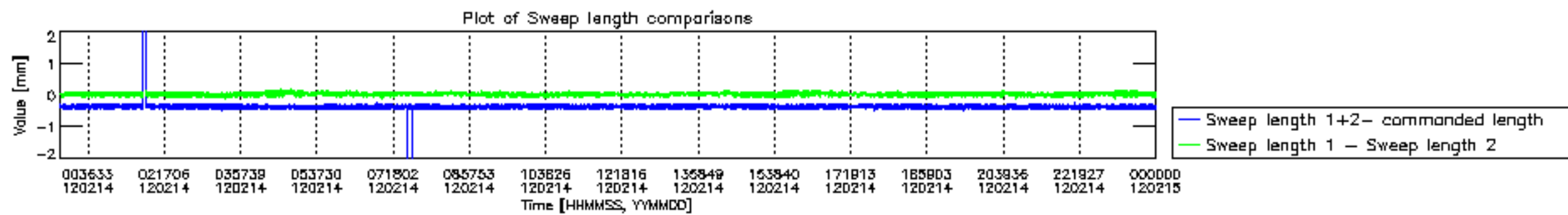


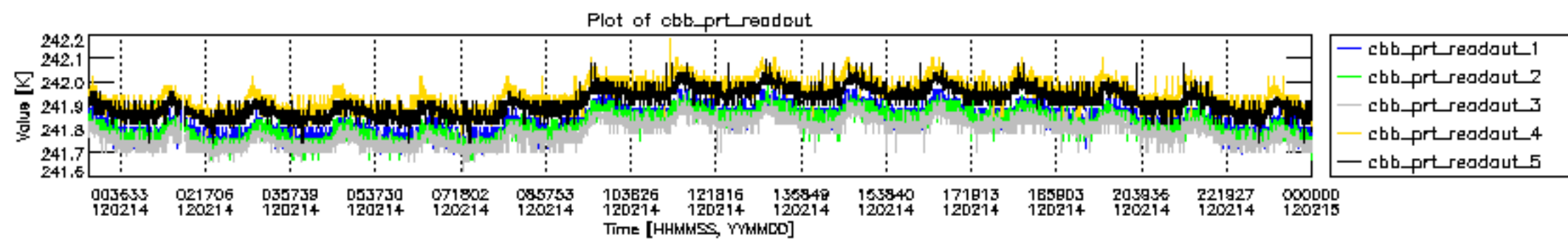


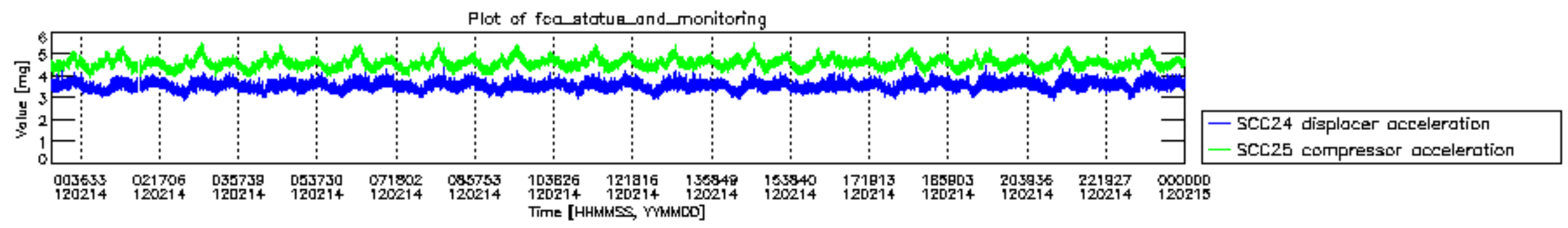












MIPNLOP_MIPSOUPAC_aux_fields_igm_cal, channel statistics plot
 Colour indicates value.

