

## 0. MIPAS Daily Report for level 0 products

### [0.1 General Info](#)

### [0.2 Instrument Operational Performance Parameters](#)

### [0.3 ADF monitoring](#)

## 0.1 General Info

This report contains a daily analysis on parameters extracted from MIPAS level 0 data (The MIP\_NL\_\_0P product).

### 0.1.1 Report summary

The table below shows general characteristics of the data that are included into this report.

Item	Value
Report version	v1.6 08-11-2010
Time of report generation	17FEB2012 05:23:23
Data source version	KSPT_L0/4504-N
Processing scope for products	12FEB2012 00:00:00 to 13FEB2012 00:00:00
Start time of first product within scope	12FEB2012 01:06:39
Stop time of last product within scope	13FEB2012 00:31:13
Total number of level 0 products	14
Number of level 0 products with errors	1

### 0.1.2 Product Quality Indicators per product

The following table shows a summary for each product used in this report.

#	Product name	Start time	Stop time	Prod err	ISP err sign	ISP miss sign	ISP disc sign	rs sign
0	MIP_NL__0PNPDE20120212_010639_000102033111_00318_52056_1010.N1	12FEB2012 01:06:39	12FEB2012 03:56:41	0	0	0	0	0
1	MIP_NL__0PNPDE20120212_035608_000062303111_00320_52058_1011.N1	12FEB2012 03:56:08	12FEB2012 05:39:58	0	0	0	0	0
2	MIP_NL__0PNPDE20120212_053924_000060333111_00321_52059_1012.N1	12FEB2012 05:39:24	12FEB2012 07:19:57	0	0	0	0	0
3	MIP_NL__0PNPDK20120212_071913_000040883111_00322_52060_8503.N1	12FEB2012 07:19:13	12FEB2012 08:27:22	0	0	0	0	0
4	MIP_NL__0PNPDK20120212_082625_000060193111_00323_52061_8504.N1	12FEB2012 08:26:25	12FEB2012 10:06:45	0	0	0	0	0
5	MIP_NL__0PNPDK20120212_100525_000060583111_00324_52062_8505.N1	12FEB2012 10:05:25	12FEB2012 11:46:23	0	0	0	0	0
6	MIP_NL__0PNPDK20120212_114445_000061233111_00325_52063_8506.N1	12FEB2012 11:44:45	12FEB2012 13:26:48	1	1	0	0	0
7	MIP_NL__0PNPDK20120212_132516_000058583111_00326_52064_8507.N1	12FEB2012 13:25:16	12FEB2012 15:02:54	0	0	0	0	0
8	MIP_NL__0PNPDK20120212_150113_000060733111_00327_52065_8508.N1	12FEB2012 15:01:13	12FEB2012 16:42:26	0	0	0	0	0
9	MIP_NL__0PNPDK20120212_164128_000059063111_00328_52066_8509.N1	12FEB2012 16:41:28	12FEB2012 18:19:53	0	0	0	0	0
10	MIP_NL__0PNPDK20120212_181918_000058283111_00329_52067_8510.N1	12FEB2012 18:19:18	12FEB2012 19:56:26	0	0	0	0	0
11	MIP_NL__0PNPDE20120212_195448_000042353111_00330_52068_1013.N1	12FEB2012 19:54:48	12FEB2012 21:05:22	0	0	0	0	0
12	MIP_NL__0PNPDE20120212_210424_000063363111_00330_52068_1014.N1	12FEB2012 21:04:24	12FEB2012 22:50:00	0	0	0	0	0
13	MIP_NL__0PNPDE20120212_224853_000061403111_00331_52069_1015.N1	12FEB2012 22:48:53	13FEB2012 00:31:13	0	0	0	0	0

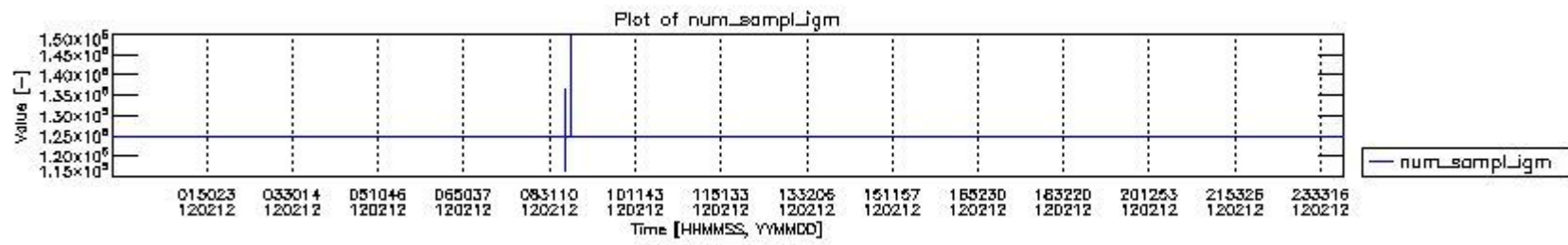
## 0.2 Instrument Operational Performance Parameters

The following plots give an overview of various instrument parameters for this day. The instrument parameters are part of the auxiliary data field within the source packets of the MIP\_NL\_\_0P product. The auxiliary data is normally included twice per interferogram. Note that only the first packet is currently included in monitoring.

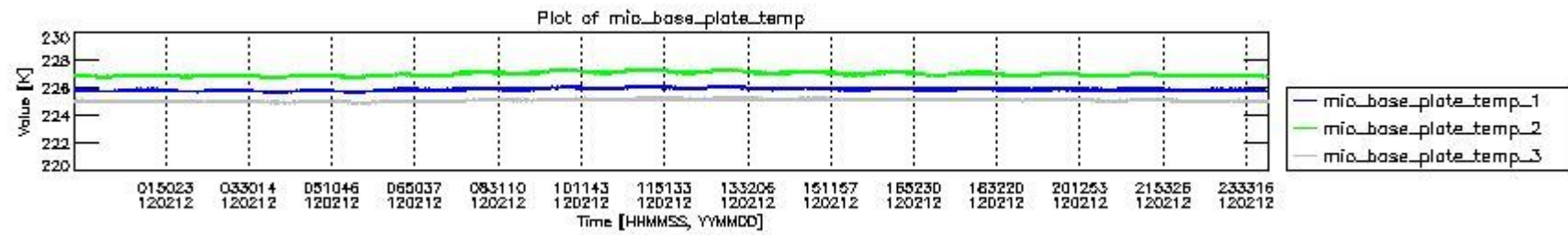
The following table shows the counts of various interferogram number of samples

Number of igm samples	Count [#]	Count [%]
116379	1	0.0023992898
124800	38714	92.886106
124803	2959	7.0994985
127308	1	0.0023992898

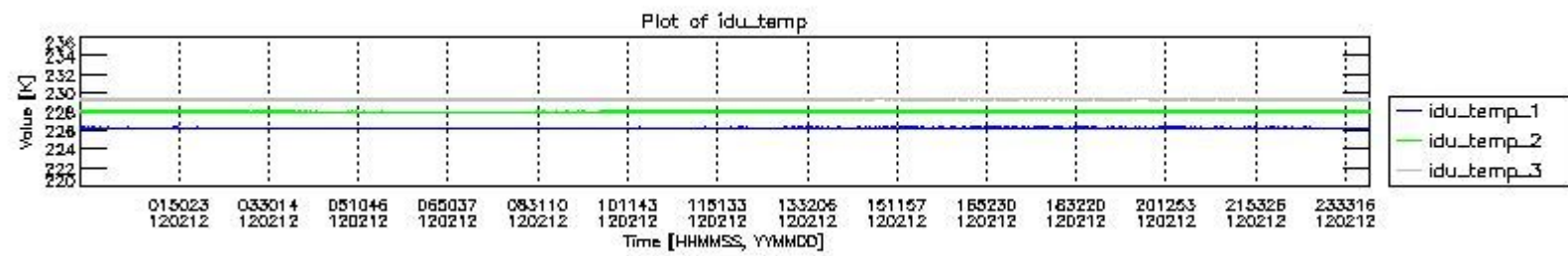
128090	1	0.0023992898
136511	1	0.0023992898
147440	1	0.0023992898
149948	1	0.0023992898



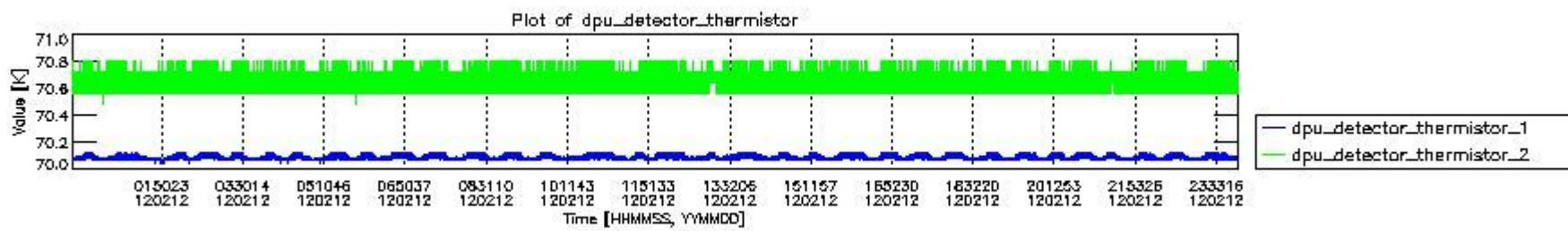
mipas\_daily\_report\_level0\_KSPT\_L0\_4504\_N\_20120212\_0.PNG



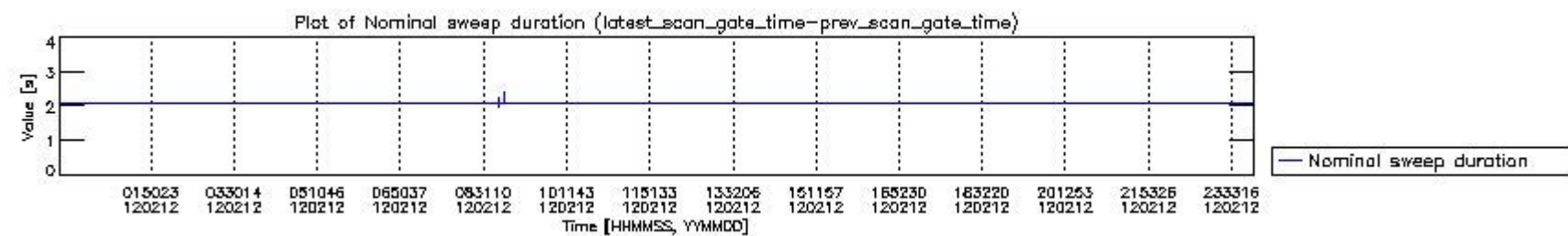
mipas\_daily\_report\_level0\_KSPT\_L0\_4504\_N\_20120212\_1.PNG



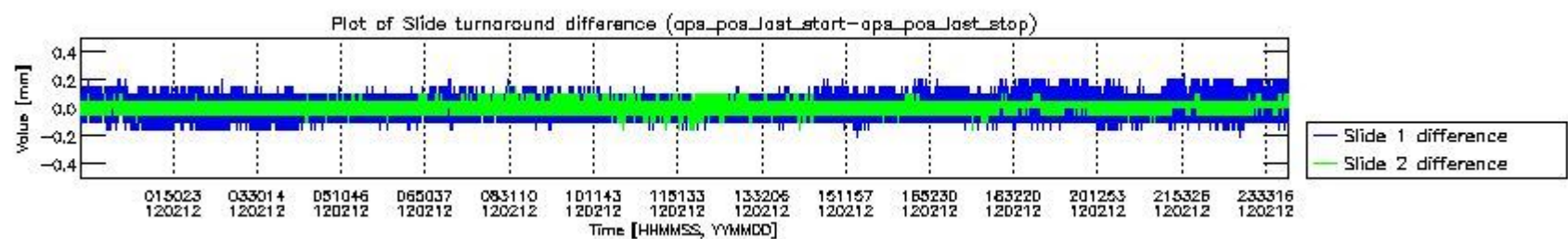
mipas\_daily\_report\_level0\_KSPT\_L0\_4504\_N\_20120212\_2.PNG



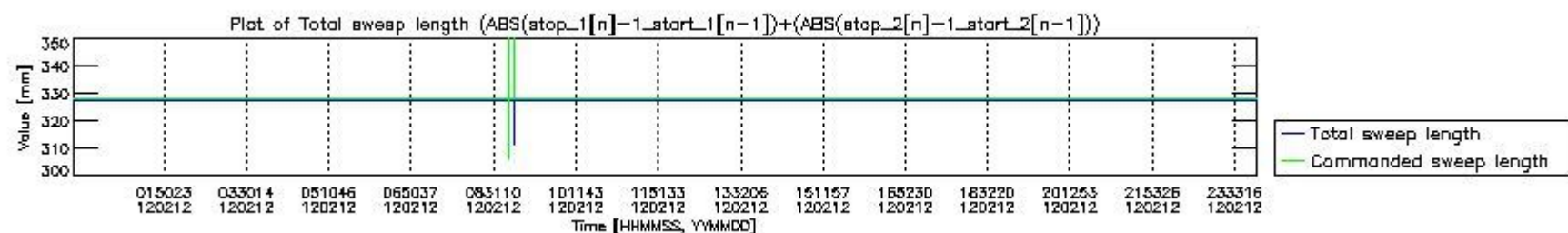
mipas\_daily\_report\_level0\_KSPT\_L0\_4504\_N\_20120212\_3.PNG



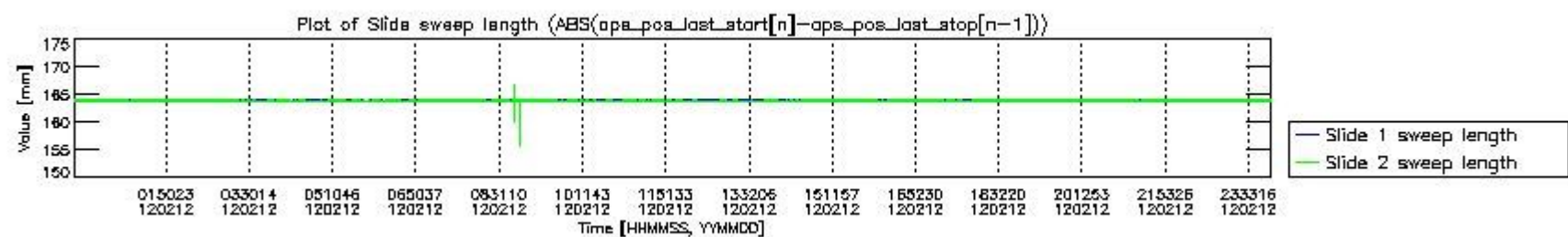
mipas\_daily\_report\_level0\_KSPT\_L0\_4504\_N\_20120212\_4.PNG



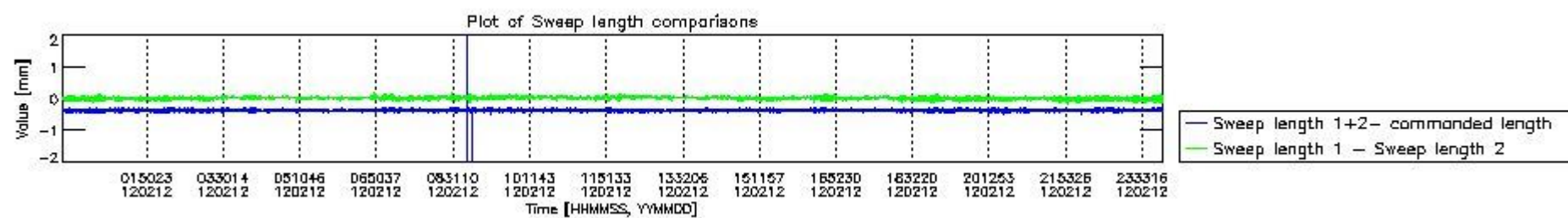
mipas\_daily\_report\_level0\_KSPT\_L0\_4504\_N\_20120212\_5.PNG



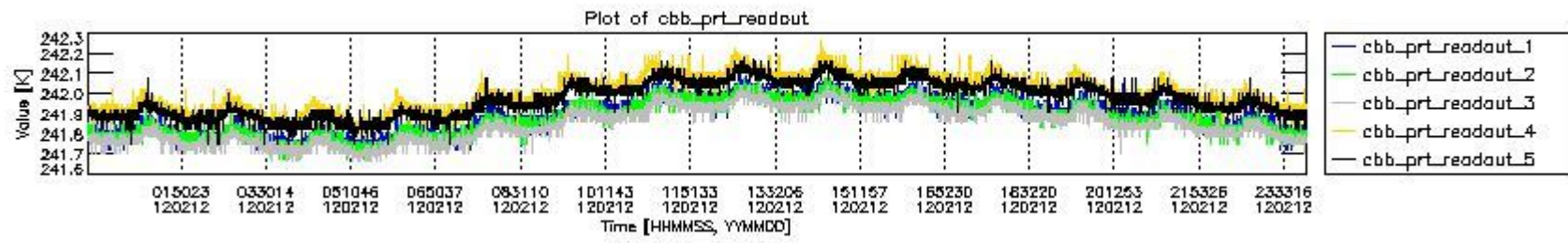
mipas\_daily\_report\_level0\_KSPT\_L0\_4504\_N\_20120212\_6.PNG



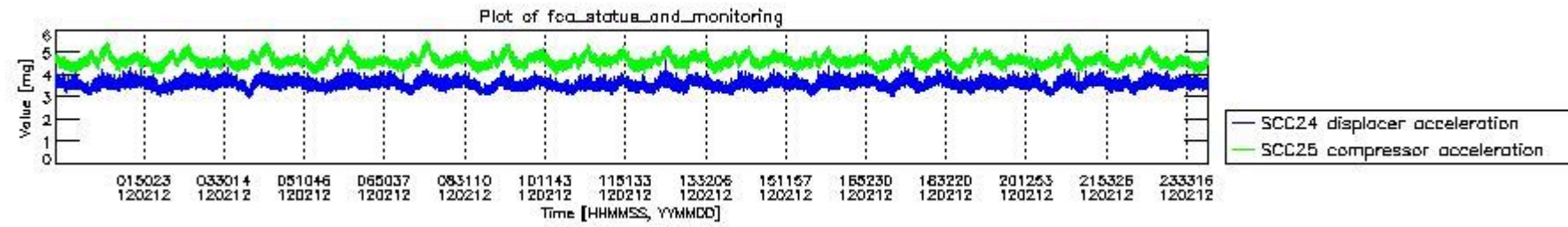
mipas\_daily\_report\_level0\_KSPT\_L0\_4504\_N\_20120212\_7.PNG



mipas\_daily\_report\_level0\_KSPT\_L0\_4504\_N\_20120212\_8.PNG



mipas\_daily\_report\_level0\_KSPT\_L0\_4504\_N\_20120212\_9.PNG

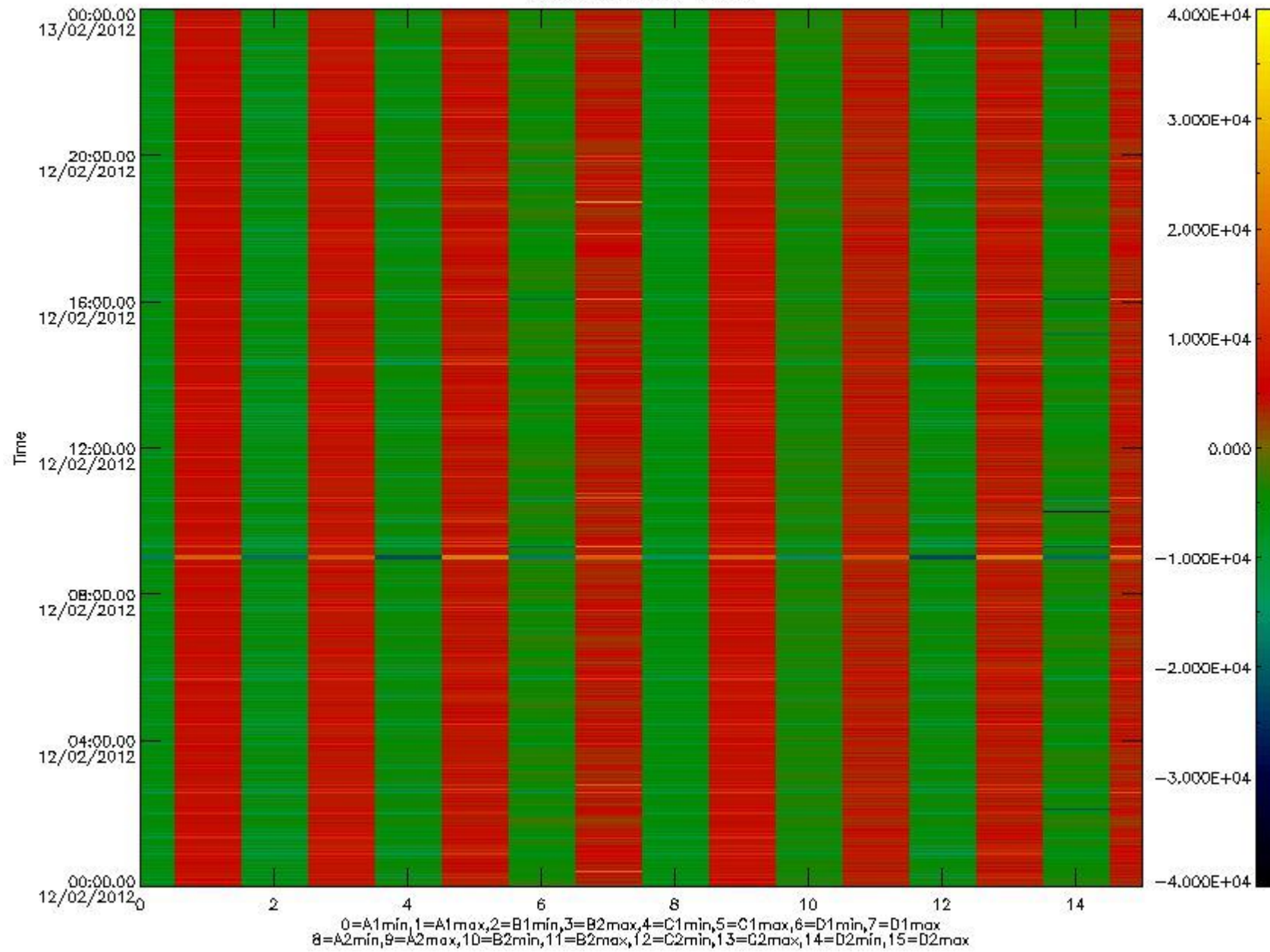


mipas\_daily\_report\_level0\_KSPT\_L0\_4504\_N\_20120212\_10.PNG

The following table shows channel statistics for all channels for this day.

Channel	Min	Max	ADC
A1	-17176	18079	16bit
B1	-18848	16413	16bit
C1	-22254	22045	16bit
D1	-27856	32767	16bit
A2	-15008	18316	16bit
B2	-16562	16367	16bit
C2	-23199	22719	16bit
D2	-32768	32767	16bit

MIPNLOP\_MIPSOUPAC\_aux\_fields\_igm\_cal, channel statistics plot  
Colour indicates value.



mipas\_daily\_report\_level0\_KSPT\_L0\_4504\_N\_20120212\_11.PNG

### 0.3 ADF monitoring

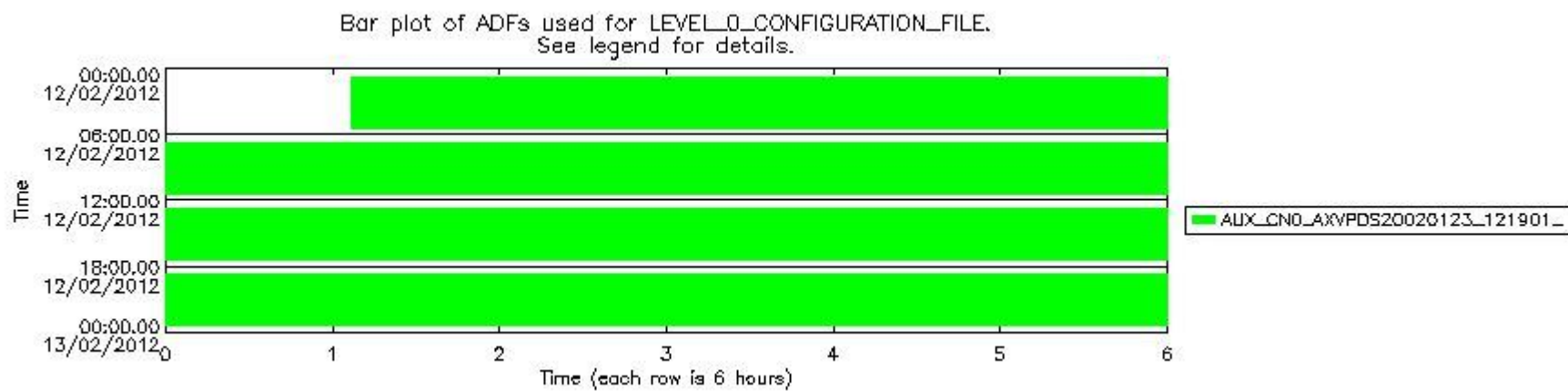
The use of ADFs is shown in two ways:

1. By means of two tables that can be used to find the ADF used for a specific product.
2. By means of plots that show changes in ADF using colours.

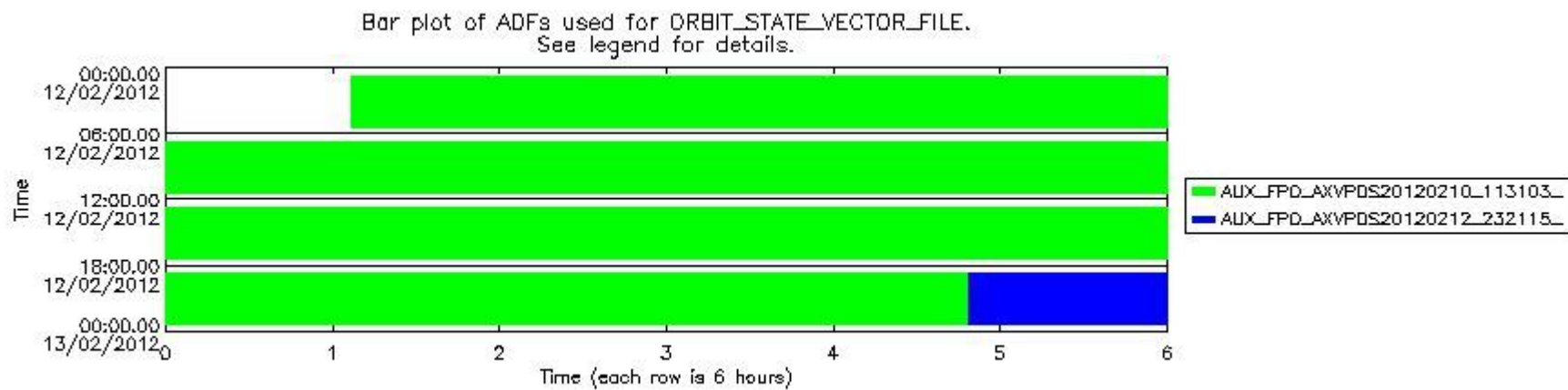
Number	ADF
0	AUX_CN0_AXVPDS20020123_121901_20020101_000000_20200101_000000
1	AUX_FPO_AXVPDS20120210_113103_20120209_195053_20120219_202417
2	AUX_FPO_AXVPDS20120212_232115_20120212_194051_20120222_201416

Number	Product name	#CN0	#FPO
--------	--------------	------	------

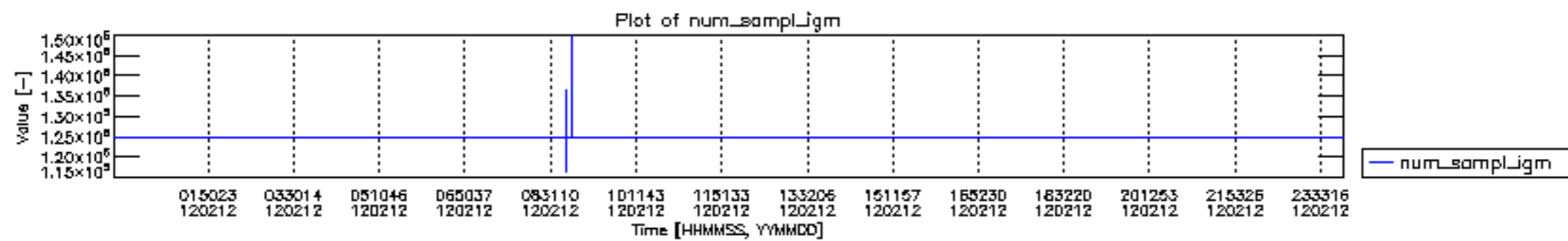
0	MIP_NL__0PNPDE20120212_010639_000102033111_00318_52056_1010.N1	0	1
1	MIP_NL__0PNPDE20120212_035608_000062303111_00320_52058_1011.N1	0	1
2	MIP_NL__0PNPDE20120212_053924_000060333111_00321_52059_1012.N1	0	1
3	MIP_NL__0PNPDK20120212_071913_000040883111_00322_52060_8503.N1	0	1
4	MIP_NL__0PNPDK20120212_082625_000060193111_00323_52061_8504.N1	0	1
5	MIP_NL__0PNPDK20120212_100525_000060583111_00324_52062_8505.N1	0	1
6	MIP_NL__0PNPDK20120212_114445_000061233111_00325_52063_8506.N1	0	1
7	MIP_NL__0PNPDK20120212_132516_000058583111_00326_52064_8507.N1	0	1
8	MIP_NL__0PNPDK20120212_150113_000060733111_00327_52065_8508.N1	0	1
9	MIP_NL__0PNPDK20120212_164128_000059063111_00328_52066_8509.N1	0	1
10	MIP_NL__0PNPDK20120212_181918_000058283111_00329_52067_8510.N1	0	1
11	MIP_NL__0PNPDE20120212_195448_000042353111_00330_52068_1013.N1	0	1
12	MIP_NL__0PNPDE20120212_210424_000063363111_00330_52068_1014.N1	0	1
13	MIP_NL__0PNPDE20120212_224853_000061403111_00331_52069_1015.N1	0	2

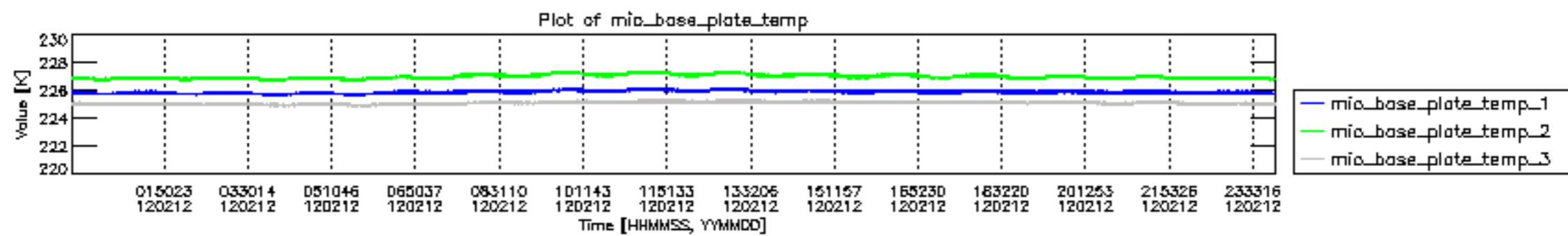


mipas\_daily\_report\_level0\_KSPT\_L0\_4504\_N\_20120212\_12.PNG

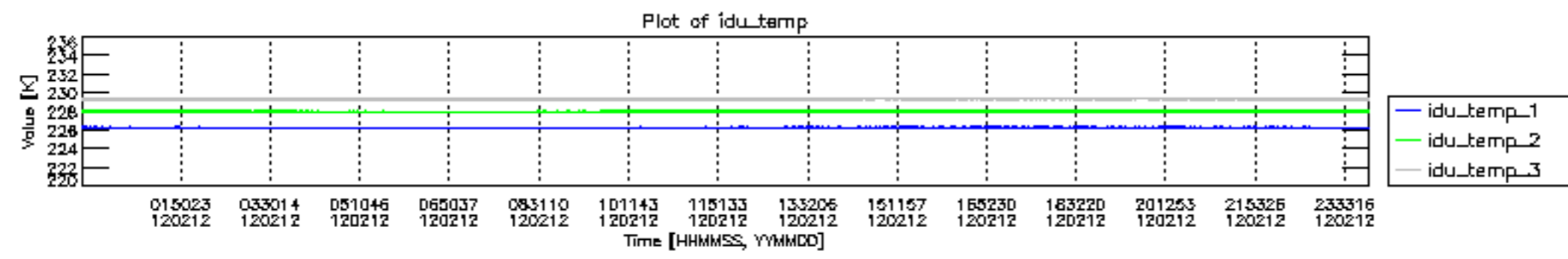


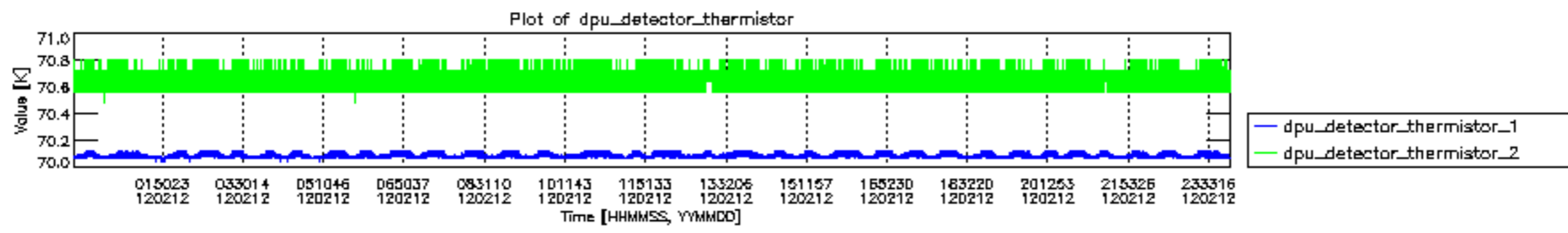
mipas\_daily\_report\_level0\_KSPT\_L0\_4504\_N\_20120212\_13.PNG

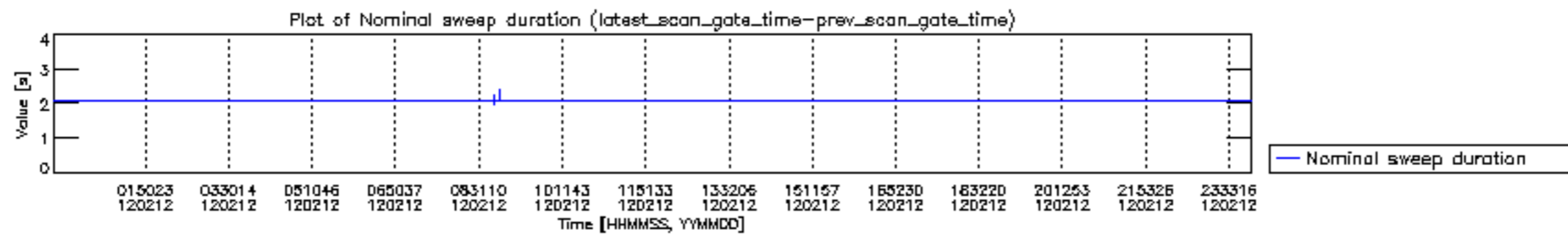


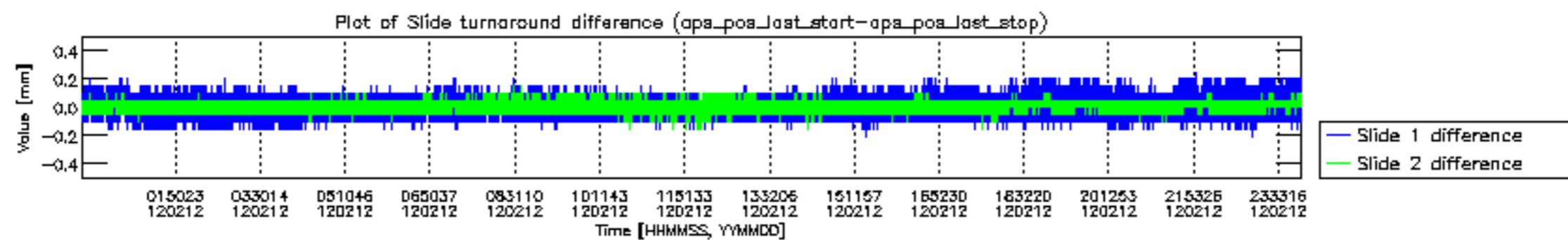


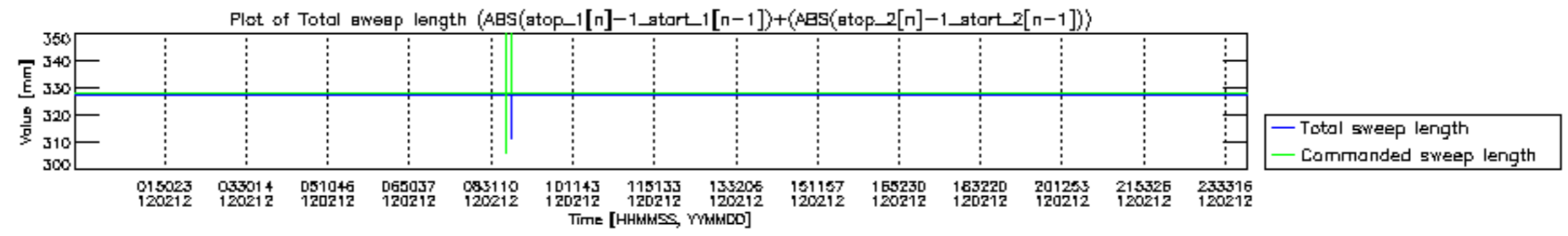


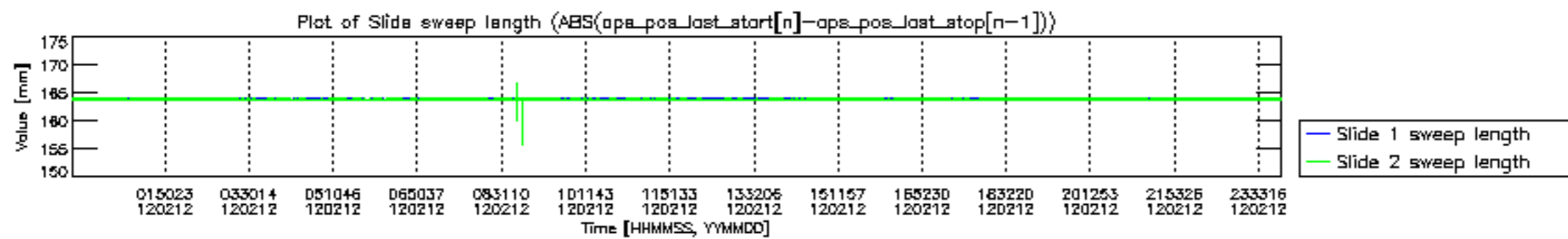


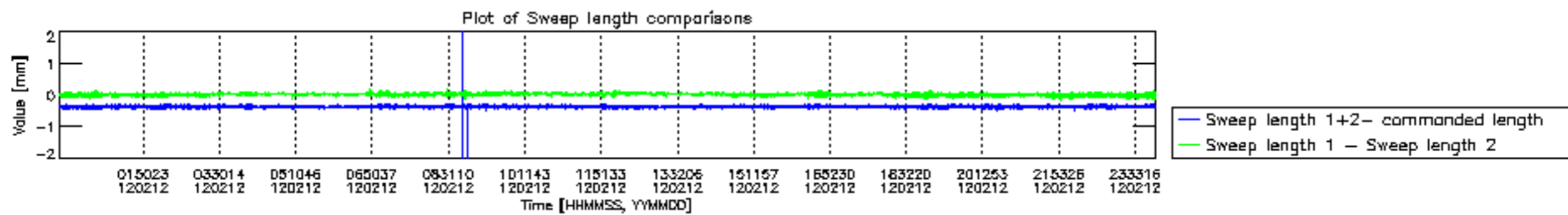


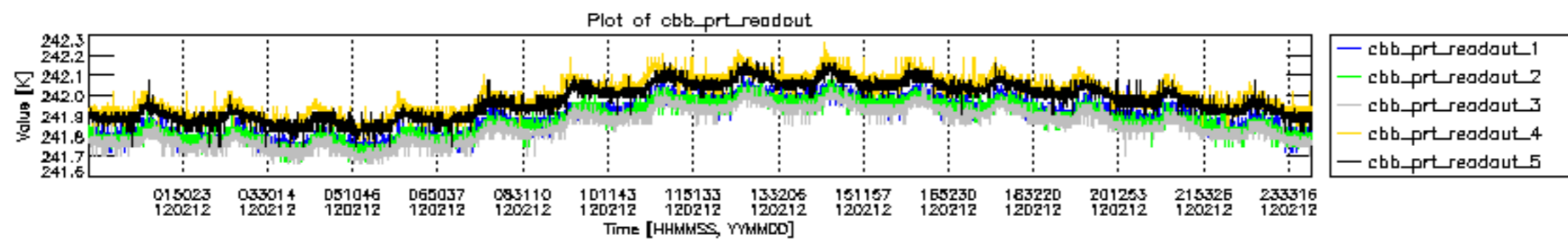




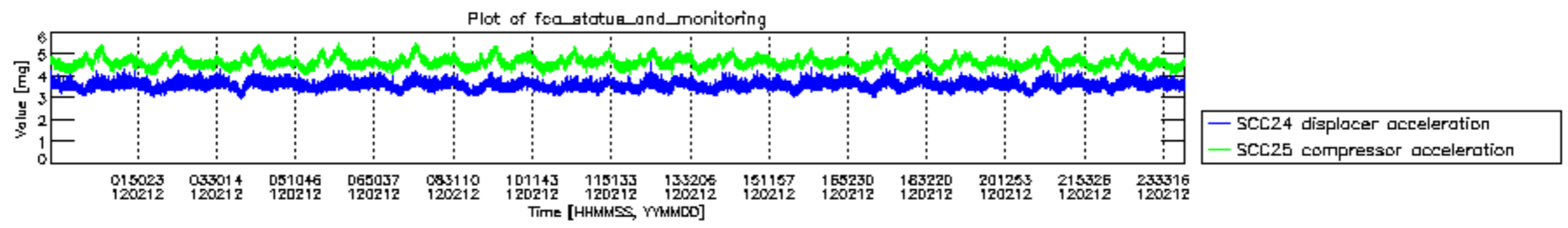












MIPNLOP\_MIPSOUPAC\_aux\_fields\_igm\_cal, channel statistics plot  
 Colour indicates value.

