

0. MIPAS Daily Report for level 0 products

[0.1 General Info](#)

[0.2 Instrument Operational Performance Parameters](#)

[0.3 ADF monitoring](#)

0.1 General Info

This report contains a daily analysis on parameters extracted from MIPAS level 0 data (The MIP_NL__0P product).

0.1.1 Report summary

The table below shows general characteristics of the data that are included into this report.

Item	Value
Report version	v1.6 08-11-2010
Time of report generation	11FEB2012 05:22:15
Data source version	KSPT_L0/4504-N
Processing scope for products	07FEB2012 00:00:00 to 08FEB2012 00:00:00
Start time of first product within scope	07FEB2012 00:50:54
Stop time of last product within scope	08FEB2012 00:13:13
Total number of level 0 products	15
Number of level 0 products with errors	0

0.1.2 Product Quality Indicators per product

The following table shows a summary for each product used in this report.

#	Product name	Start time	Stop time	Prod err	ISP err sign	ISP miss sign	ISP disc sign	rs sign
0	MIP_NL__0PNPDE20120207_005054_000057683111_00246_51984_0981.N1	07FEB2012 00:50:54	07FEB2012 02:27:02	0	0	0	0	0
1	MIP_NL__0PNPDE20120207_022601_000045103111_00247_51985_0982.N1	07FEB2012 02:26:01	07FEB2012 03:41:11	0	0	0	0	0
2	MIP_NL__0PNPDE20120207_034038_000061463111_00248_51986_0983.N1	07FEB2012 03:40:38	07FEB2012 05:23:04	0	0	0	0	0
3	MIP_NL__0PNPDE20120207_052230_000060673111_00249_51987_0984.N1	07FEB2012 05:22:30	07FEB2012 07:03:37	0	0	0	0	0
4	MIP_NL__0PNPDK20120207_070303_000040743111_00250_51988_8467.N1	07FEB2012 07:03:03	07FEB2012 08:10:57	0	0	0	0	0
5	MIP_NL__0PNPDK20120207_080959_000061683111_00251_51989_8468.N1	07FEB2012 08:09:59	07FEB2012 09:52:47	0	0	0	0	0
6	MIP_NL__0PNPDK20120207_095129_000059753111_00252_51990_8469.N1	07FEB2012 09:51:29	07FEB2012 11:31:04	0	0	0	0	0
7	MIP_NL__0PNPDK20120207_112924_000059543111_00253_51991_8470.N1	07FEB2012 11:29:24	07FEB2012 13:08:38	0	0	0	0	0
8	MIP_NL__0PNPDK20120207_130653_000060813111_00254_51992_8471.N1	07FEB2012 13:06:53	07FEB2012 14:48:14	0	0	0	0	0
9	MIP_NL__0PNPDK20120207_144630_000058953111_00255_51993_8472.N1	07FEB2012 14:46:30	07FEB2012 16:24:45	0	0	0	0	0
10	MIP_NL__0PNPDK20120207_162412_000059293111_00256_51994_8473.N1	07FEB2012 16:24:12	07FEB2012 18:03:00	0	0	0	0	0
11	MIP_NL__0PNPDK20120207_180200_000059143111_00257_51995_8474.N1	07FEB2012 18:02:00	07FEB2012 19:40:34	0	0	0	0	0
12	MIP_NL__0PNPDK20120207_193831_000062043111_00258_51996_8475.N1	07FEB2012 19:38:31	07FEB2012 21:21:55	0	0	0	0	0
13	MIP_NL__0PNPDE20120207_212040_000043513111_00259_51997_0985.N1	07FEB2012 21:20:40	07FEB2012 22:33:11	0	0	0	0	0
14	MIP_NL__0PNPDE20120207_223202_000060713111_00259_51997_0986.N1	07FEB2012 22:32:02	08FEB2012 00:13:13	0	0	0	0	0

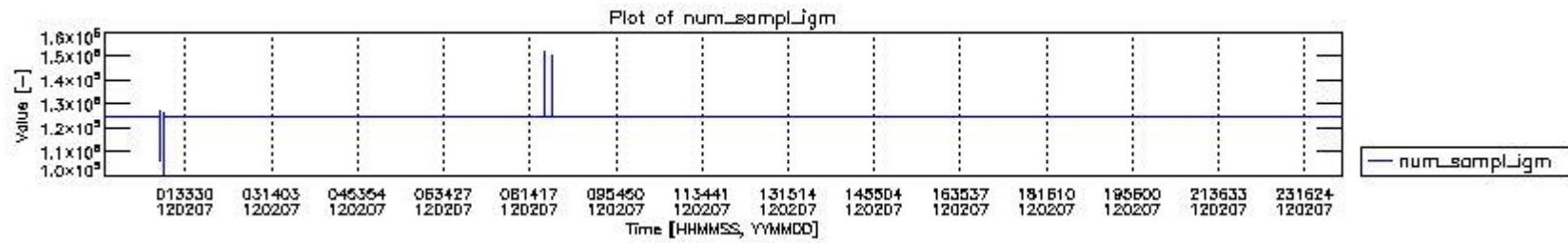
0.2 Instrument Operational Performance Parameters

The following plots give an overview of various instrument parameters for this day. The instrument parameters are part of the auxiliary data field within the source packets of the MIP_NL__0P product. The auxiliary data is normally included twice per interferogram. Note that only the first packet is currently included in monitoring.

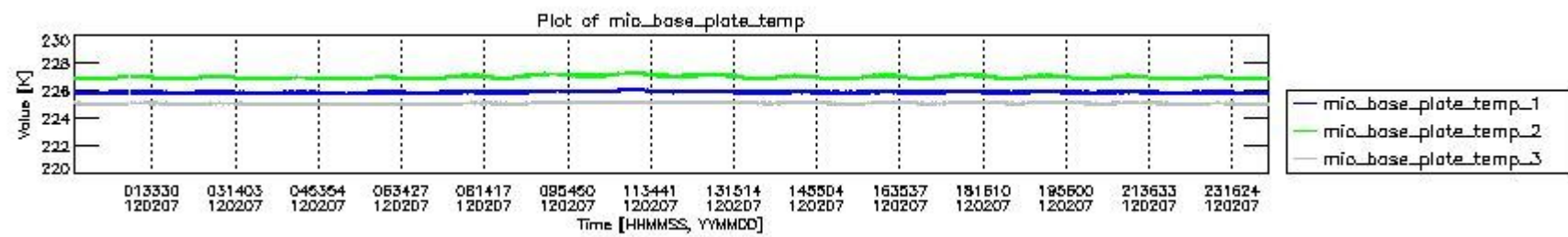
The following table shows the counts of various interferogram number of samples

Number of igm samples	Count [#]	Count [%]
100483	1	0.0024042507
106790	1	0.0024042507
108912	1	0.0024042507

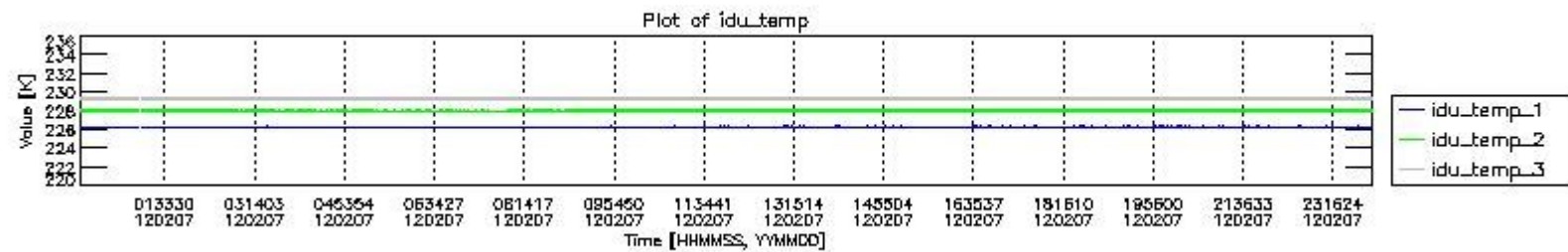
124800	39193	94.229798
124803	2388	5.7413507
125735	1	0.0024042507
126670	1	0.0024042507
126922	1	0.0024042507
127531	1	0.0024042507
128497	1	0.0024042507
147663	1	0.0024042507
148629	1	0.0024042507
150394	1	0.0024042507
152326	1	0.0024042507



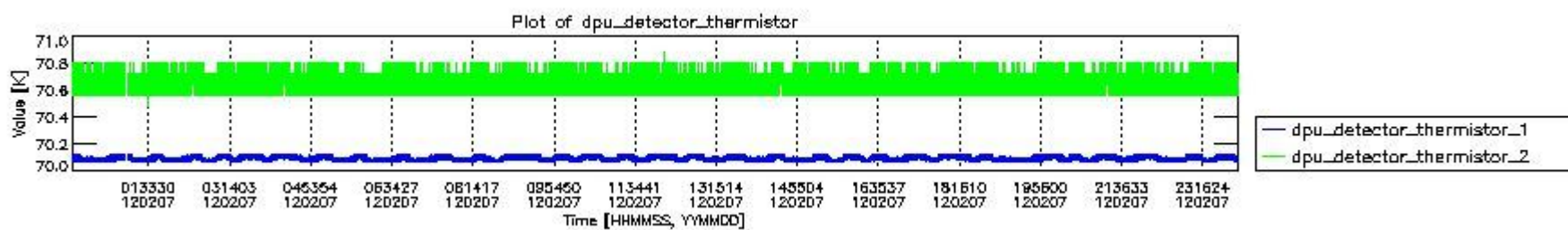
mipas_daily_report_level0_KSPT_L0_4504_N_20120207_0.PNG



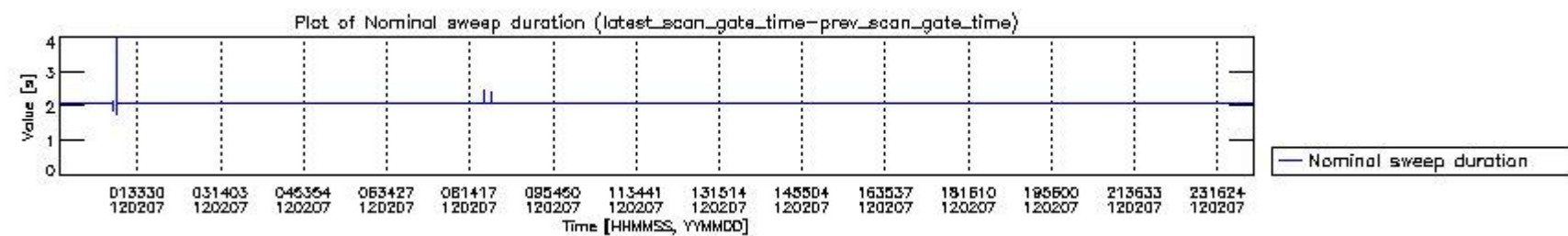
mipas_daily_report_level0_KSPT_L0_4504_N_20120207_1.PNG



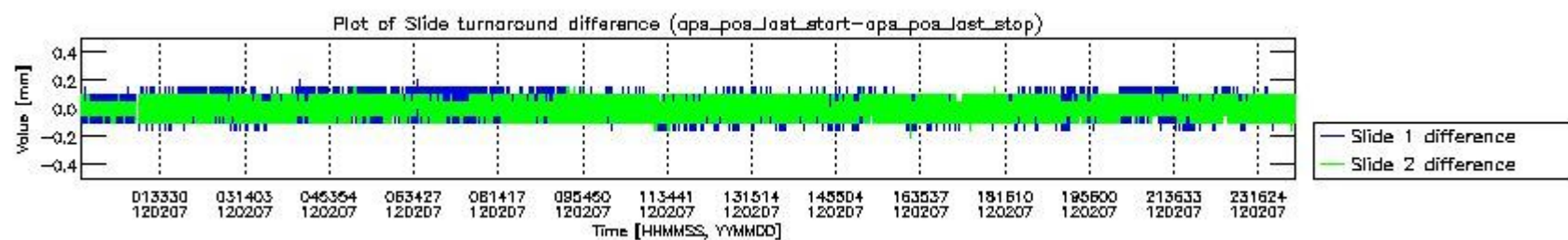
mipas_daily_report_level0_KSPT_L0_4504_N_20120207_2.PNG



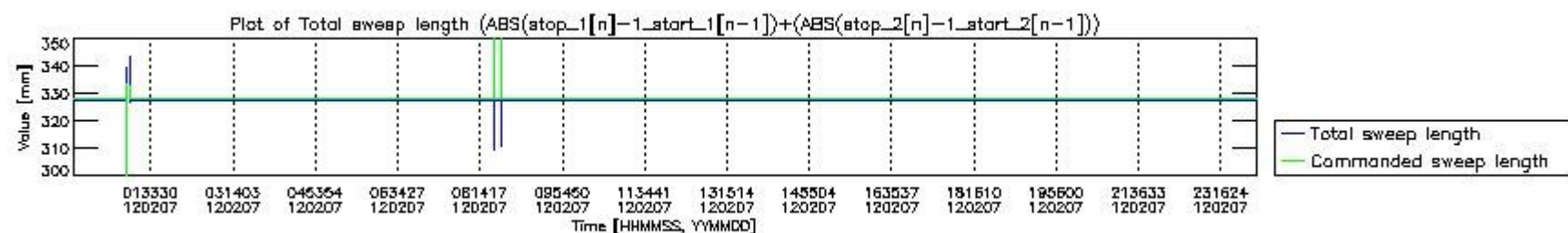
mipas_daily_report_level0_KSPT_L0_4504_N_20120207_3.PNG



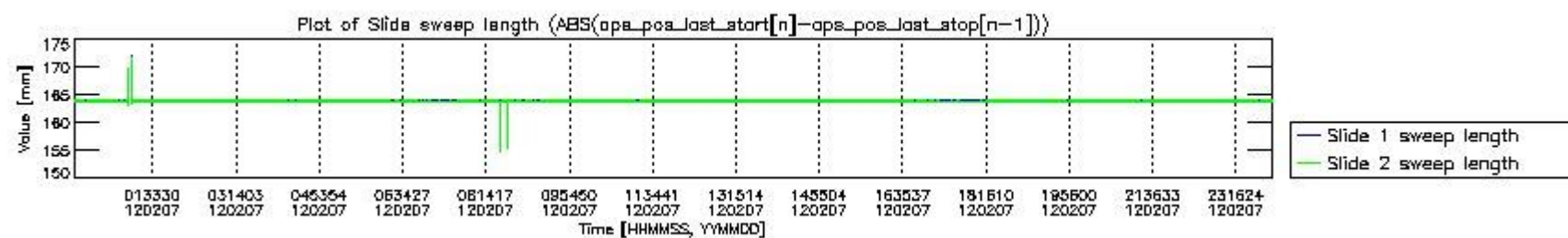
mipas_daily_report_level0_KSPT_L0_4504_N_20120207_4.PNG



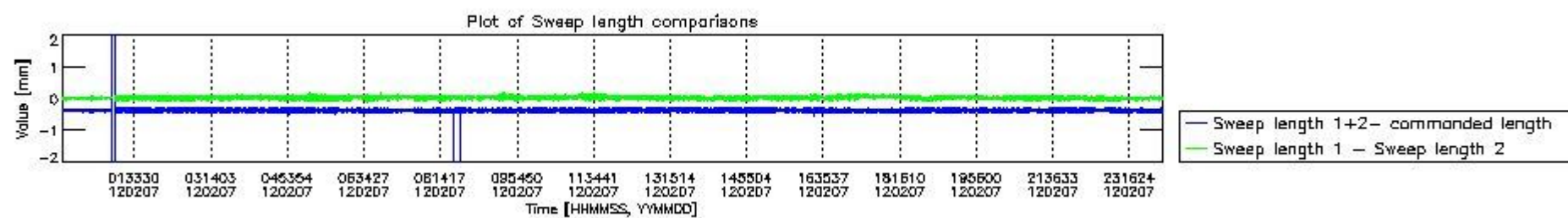
mipas_daily_report_level0_KSPT_L0_4504_N_20120207_5.PNG



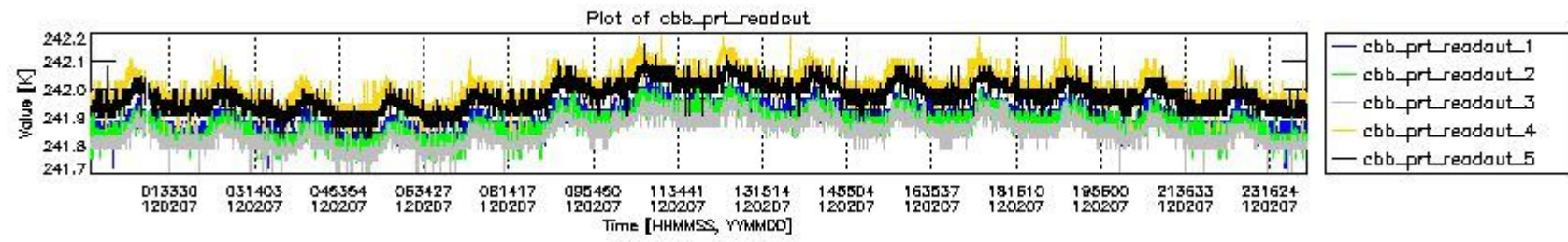
mipas_daily_report_level0_KSPT_L0_4504_N_20120207_6.PNG



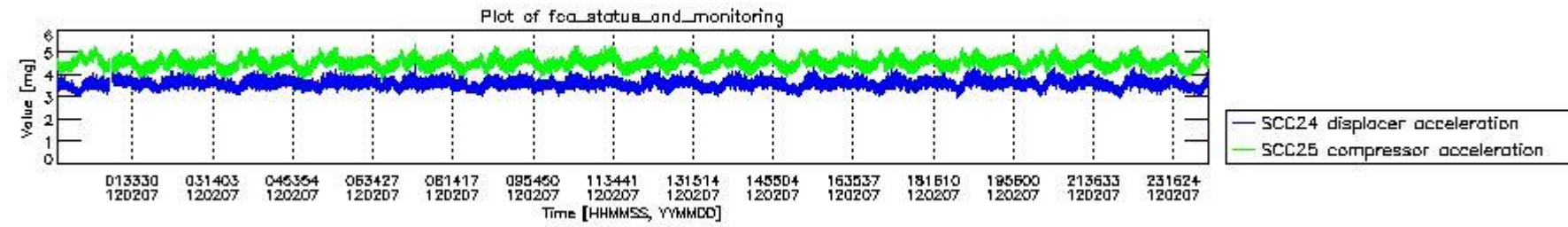
mipas_daily_report_level0_KSPT_L0_4504_N_20120207_7.PNG



mipas_daily_report_level0_KSPT_L0_4504_N_20120207_8.PNG



mipas_daily_report_level0_KSPT_L0_4504_N_20120207_9.PNG

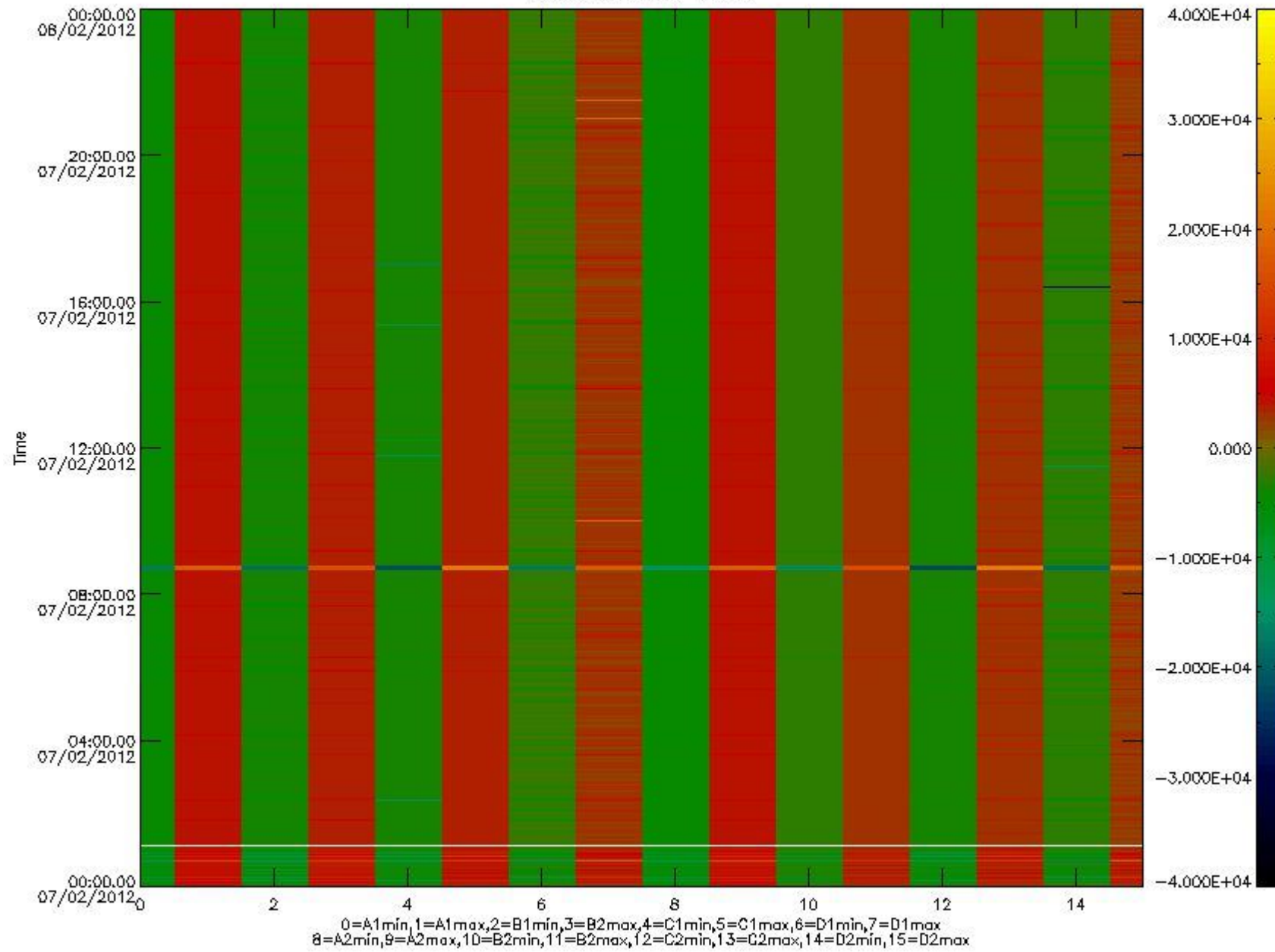


mipas_daily_report_level0_KSPT_L0_4504_N_20120207_10.PNG

The following table shows channel statistics for all channels for this day.

Channel	Min	Max	ADC
A1	-17194	18070	16bit
B1	-18855	16395	16bit
C1	-22293	22061	16bit
D1	-21099	32394	16bit
A2	-15018	18325	16bit
B2	-16549	16374	16bit
C2	-23139	24210	16bit
D2	-32768	27159	16bit

MIPNLOP_MIPSOUPAC_aux_fields_igm_cal, channel statistics plot
Colour indicates value.



mipas_daily_report_level0_KSPT_L0_4504_N_20120207_11.PNG

0.3 ADF monitoring

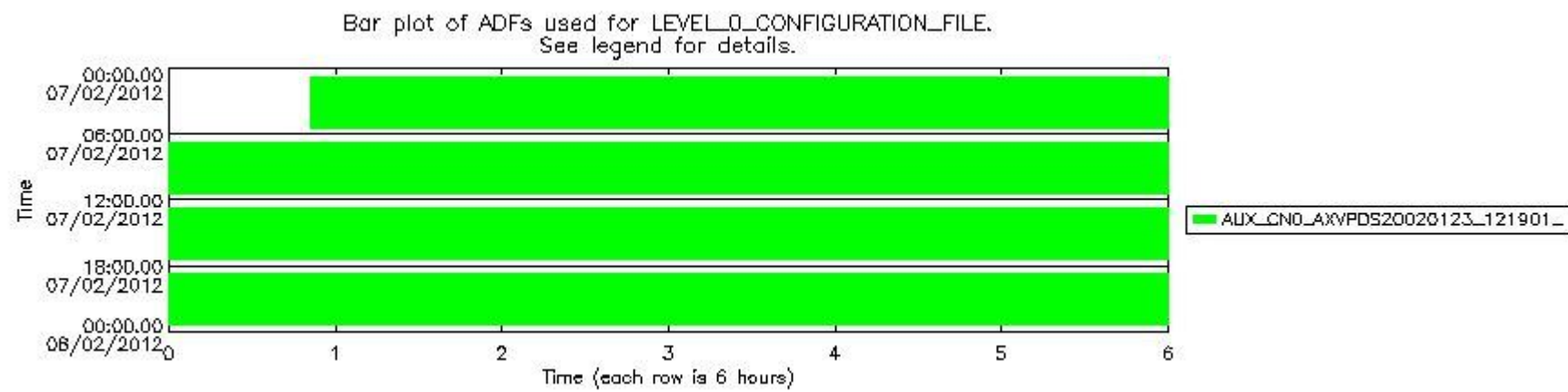
The use of ADFs is shown in two ways:

1. By means of two tables that can be used to find the ADF used for a specific product.
2. By means of plots that show changes in ADF using colours.

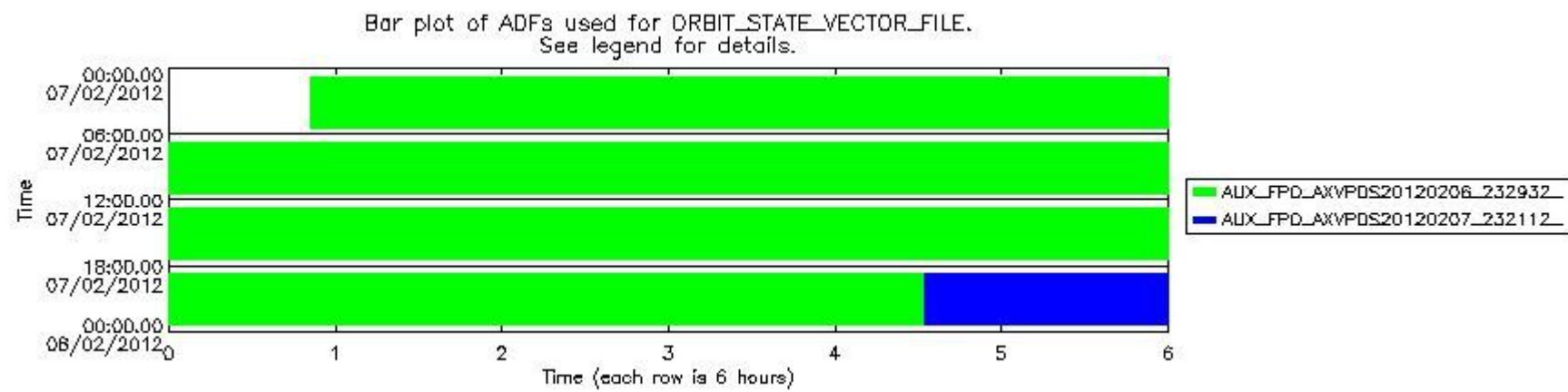
Number	ADF
0	AUX_CN0_AXVPDS20020123_121901_20020101_000000_20200101_000000
1	AUX_FPO_AXVPDS20120206_232932_20120206_182040_20120216_203419
2	AUX_FPO_AXVPDS20120207_232112_20120207_192409_20120217_213747

Number	Product name	#CN0	#FPO
--------	--------------	------	------

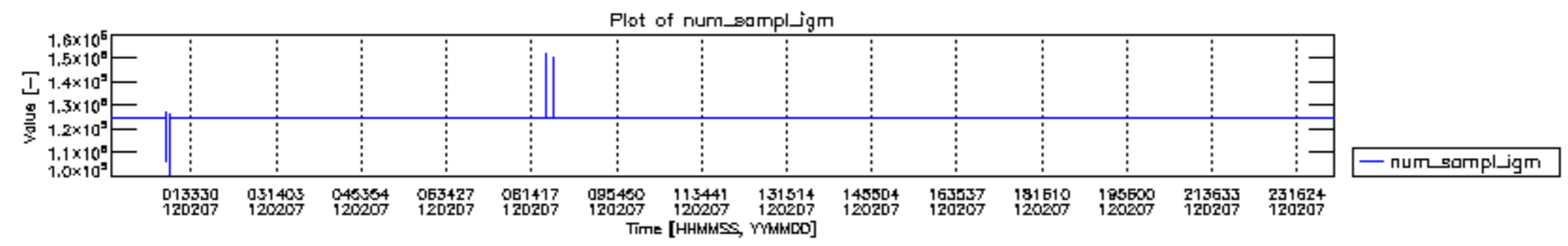
0	MIP_NL__0PNPDE20120207_005054_000057683111_00246_51984_0981.N1	0	1
1	MIP_NL__0PNPDE20120207_022601_000045103111_00247_51985_0982.N1	0	1
2	MIP_NL__0PNPDE20120207_034038_000061463111_00248_51986_0983.N1	0	1
3	MIP_NL__0PNPDE20120207_052230_000060673111_00249_51987_0984.N1	0	1
4	MIP_NL__0PNPDK20120207_070303_000040743111_00250_51988_8467.N1	0	1
5	MIP_NL__0PNPDK20120207_080959_000061683111_00251_51989_8468.N1	0	1
6	MIP_NL__0PNPDK20120207_095129_000059753111_00252_51990_8469.N1	0	1
7	MIP_NL__0PNPDK20120207_112924_000059543111_00253_51991_8470.N1	0	1
8	MIP_NL__0PNPDK20120207_130653_000060813111_00254_51992_8471.N1	0	1
9	MIP_NL__0PNPDK20120207_144630_000058953111_00255_51993_8472.N1	0	1
10	MIP_NL__0PNPDK20120207_162412_000059293111_00256_51994_8473.N1	0	1
11	MIP_NL__0PNPDK20120207_180200_000059143111_00257_51995_8474.N1	0	1
12	MIP_NL__0PNPDK20120207_193831_000062043111_00258_51996_8475.N1	0	1
13	MIP_NL__0PNPDE20120207_212040_000043513111_00259_51997_0985.N1	0	1
14	MIP_NL__0PNPDE20120207_223202_000060713111_00259_51997_0986.N1	0	2

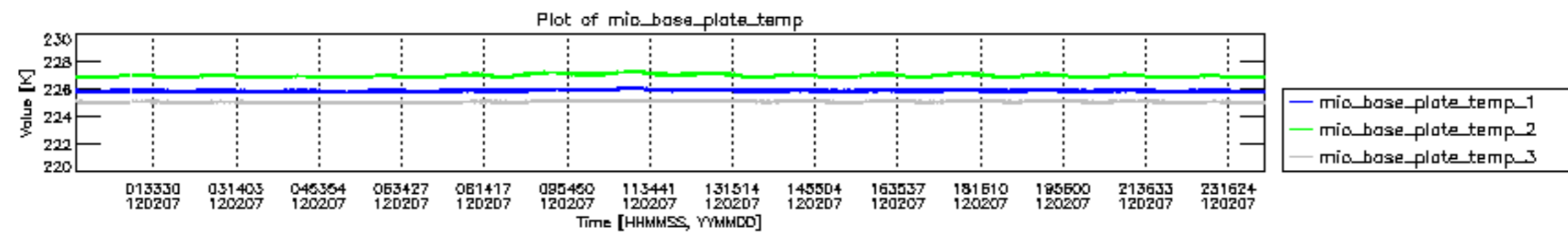


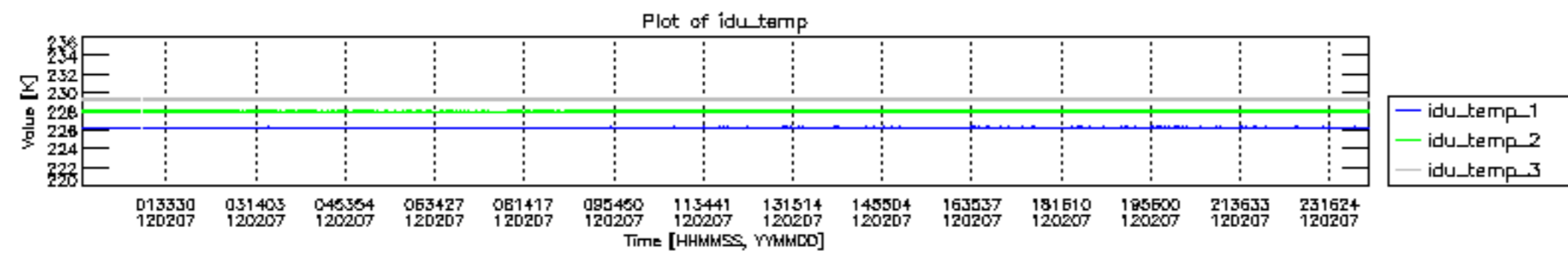
mipas_daily_report_level0_KSPT_L0_4504_N_20120207_12.PNG

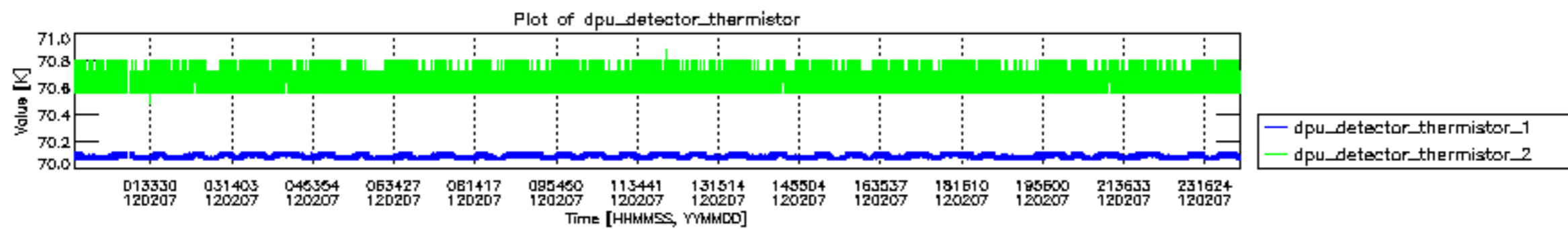


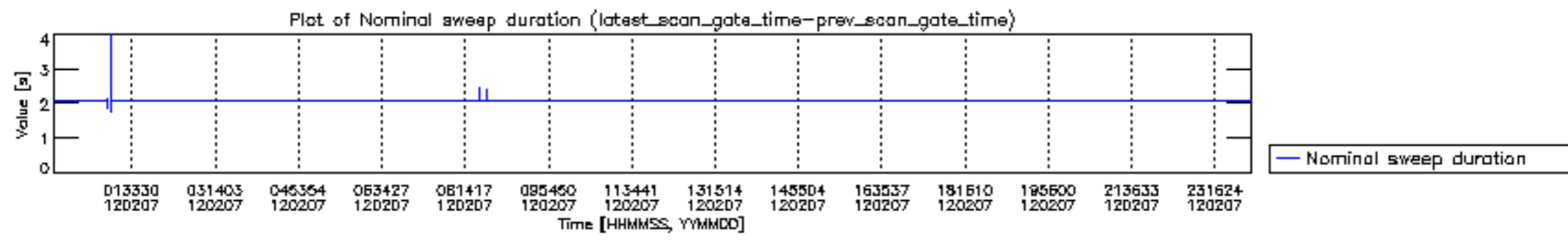
mipas_daily_report_level0_KSPT_L0_4504_N_20120207_13.PNG

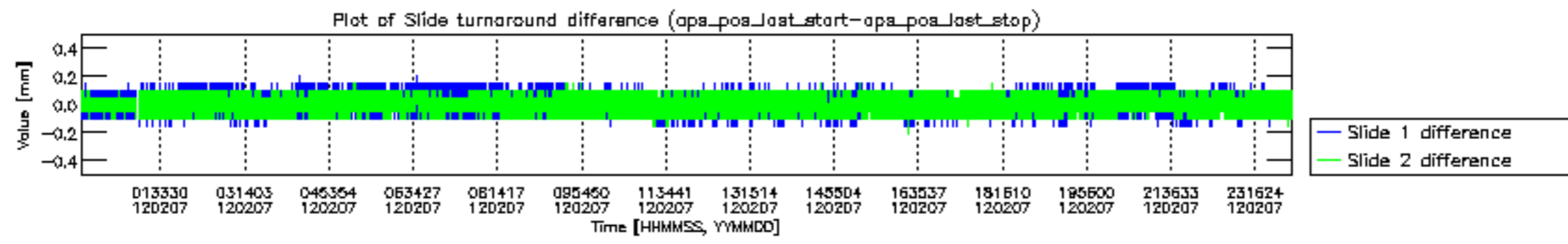


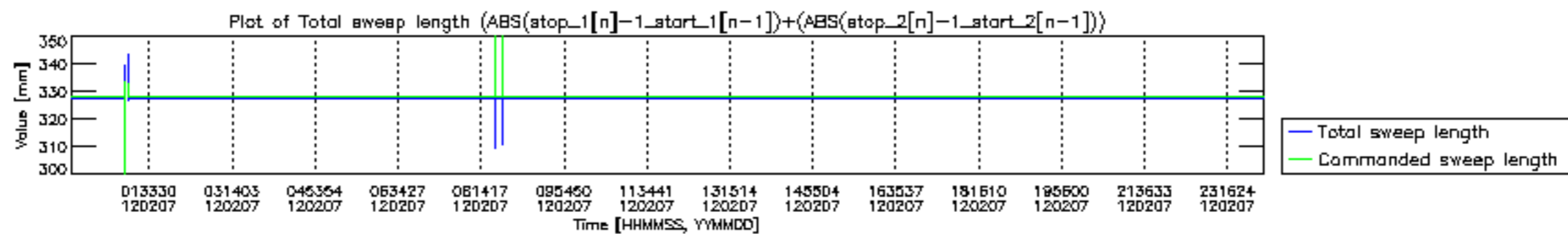


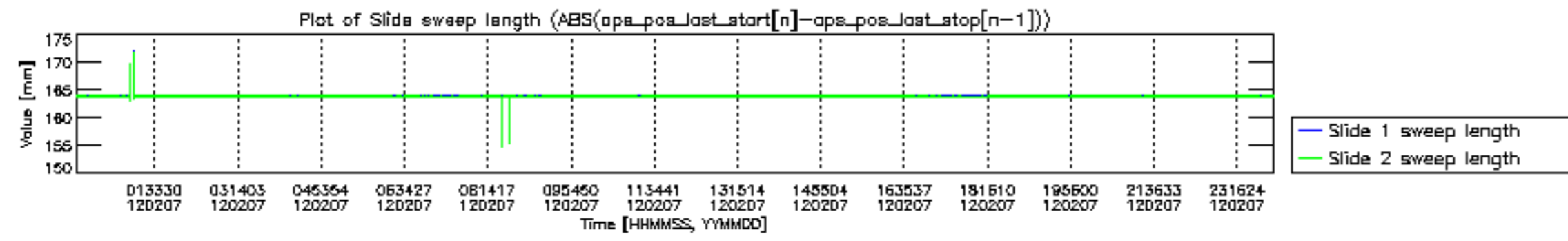


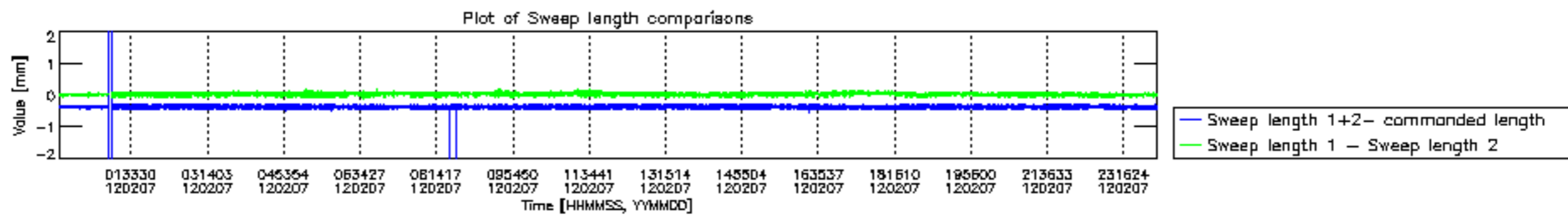


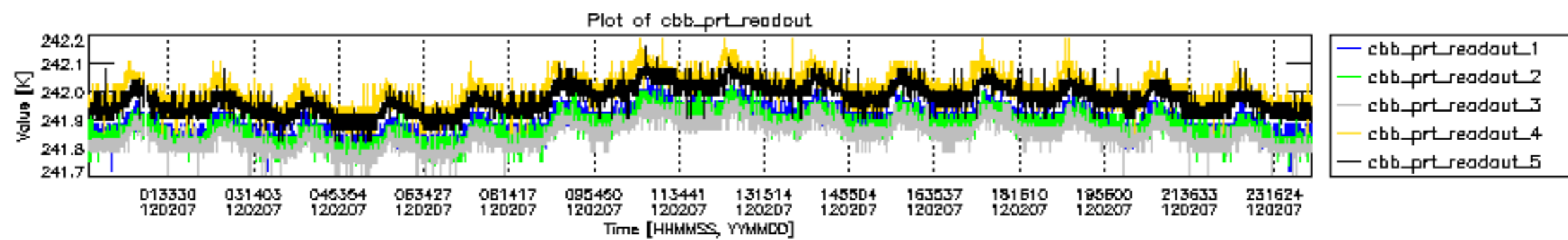


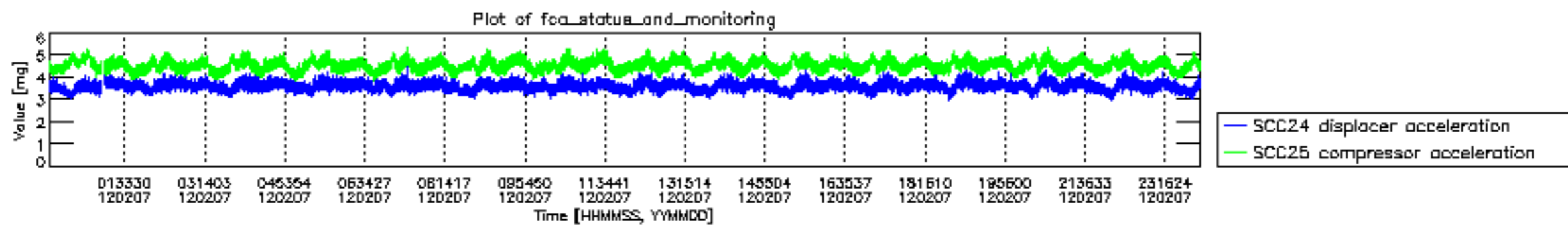












MIPNLOP_MIPSOUPAC_aux_fields_igm_cal, channel statistics plot
 Colour indicates value.

