

## 0. MIPAS Daily Report for level 0 products

### [0.1 General Info](#)

### [0.2 Instrument Operational Performance Parameters](#)

### [0.3 ADF monitoring](#)

## 0.1 General Info

This report contains a daily analysis on parameters extracted from MIPAS level 0 data (The MIP\_NL\_\_0P product).

### 0.1.1 Report summary

The table below shows general characteristics of the data that are included into this report.

Item	Value
Report version	v1.6 08-11-2010
Time of report generation	05FEB2012 05:23:33
Data source version	KSPT_L0/4504-N
Processing scope for products	31JAN2012 00:00:00 to 01FEB2012 00:00:00
Start time of first product within scope	31JAN2012 00:06:22
Stop time of last product within scope	01FEB2012 01:10:12
Total number of level 0 products	16
Number of level 0 products with errors	0

### 0.1.2 Product Quality Indicators per product

The following table shows a summary for each product used in this report.

#	Product name	Start time	Stop time	Prod err	ISP err sign	ISP miss sign	ISP disc sign	rs sign
0	MIP_NL__0PNPDE20120131_000622_000059623111_00145_51883_5457.N1	31JAN2012 00:06:22	31JAN2012 01:45:44	0	0	0	0	0
1	MIP_NL__0PNPDE20120131_014439_000043853111_00146_51884_5458.N1	31JAN2012 01:44:39	31JAN2012 02:57:44	0	0	0	0	0
2	MIP_NL__0PNPDE20120131_025713_000061983111_00147_51885_5459.N1	31JAN2012 02:57:13	31JAN2012 04:40:31	0	0	0	0	0
3	MIP_NL__0PNPDE20120131_043957_000059893111_00148_51886_5460.N1	31JAN2012 04:39:57	31JAN2012 06:19:47	0	0	0	0	0
4	MIP_NL__0PNPDK20120131_072644_000060103111_00150_51888_8408.N1	31JAN2012 07:26:44	31JAN2012 09:06:54	0	0	0	0	0
5	MIP_NL__0PNPDK20120131_090530_000061903111_00151_51889_8409.N1	31JAN2012 09:05:30	31JAN2012 10:48:40	0	0	0	0	0
6	MIP_NL__0PNPDK20120131_104702_000059753111_00152_51890_8410.N1	31JAN2012 10:47:02	31JAN2012 12:26:37	0	0	0	0	0
7	MIP_NL__0PNPDK20120131_122507_000060353111_00153_51891_8411.N1	31JAN2012 12:25:07	31JAN2012 14:05:42	0	0	0	0	0
8	MIP_NL__0PNPDK20120131_140444_000058993111_00154_51892_8412.N1	31JAN2012 14:04:44	31JAN2012 15:43:03	0	0	0	0	0
9	MIP_NL__0PNPDK20120131_154207_000058813111_00155_51893_8413.N1	31JAN2012 15:42:07	31JAN2012 17:20:08	0	0	0	0	0
10	MIP_NL__0PNPDK20120131_171907_000059293111_00156_51894_8414.N1	31JAN2012 17:19:07	31JAN2012 18:57:56	0	0	0	0	0
11	MIP_NL__0PNPDK20120131_185655_000059663111_00157_51895_8415.N1	31JAN2012 18:56:55	31JAN2012 20:36:22	0	0	0	0	0
12	MIP_NL__0PNPDE20120131_203448_000023103111_00158_51896_5461.N1	31JAN2012 20:34:48	31JAN2012 21:13:18	0	0	0	0	0
13	MIP_NL__0PNPDE20120131_211318_000021063111_00158_51896_5462.N1	31JAN2012 21:13:18	31JAN2012 21:48:24	0	0	0	0	0
14	MIP_NL__0PNPDE20120131_214719_000061963111_00158_51896_5463.N1	31JAN2012 21:47:19	31JAN2012 23:30:35	0	0	0	0	0
15	MIP_NL__0PNPDE20120131_232928_000060433111_00159_51897_5464.N1	31JAN2012 23:29:28	01FEB2012 01:10:12	0	0	0	0	0

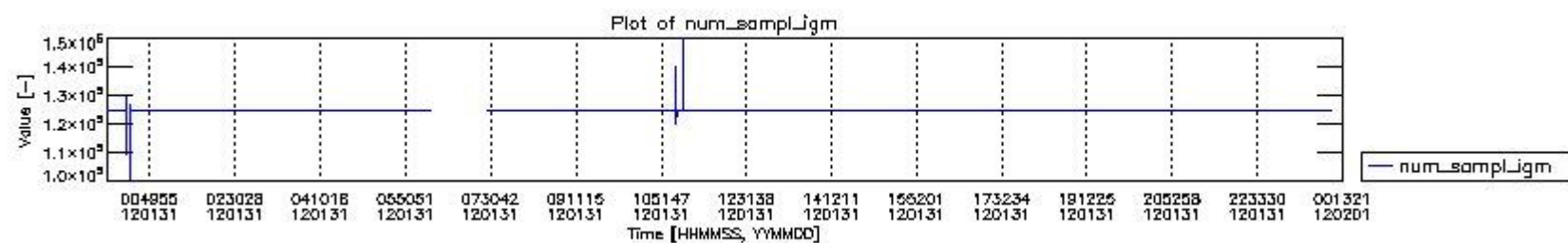
## 0.2 Instrument Operational Performance Parameters

The following plots give an overview of various instrument parameters for this day. The instrument parameters are part of the auxiliary data field within the source packets of the MIP\_NL\_\_0P product. The auxiliary data is normally included twice per interferogram. Note that only the first packet is currently included in monitoring.

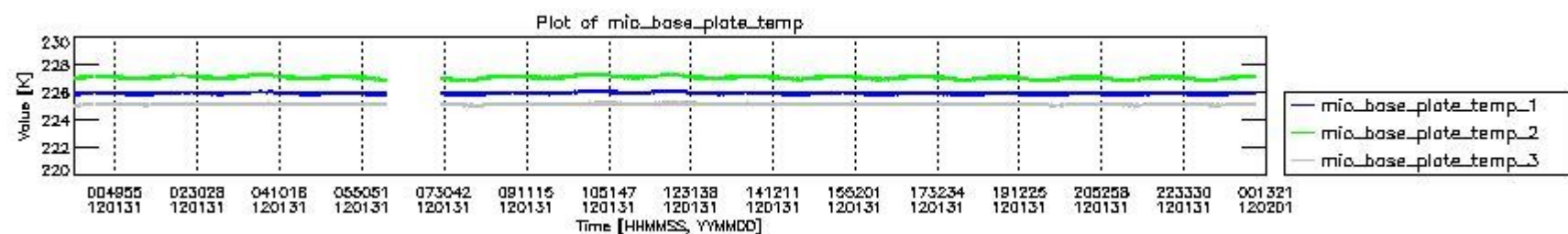
The following table shows the counts of various interferogram number of samples

Number of igm samples	Count [#]	Count [%]
100483	1	0.0025241052
109245	1	0.0025241052

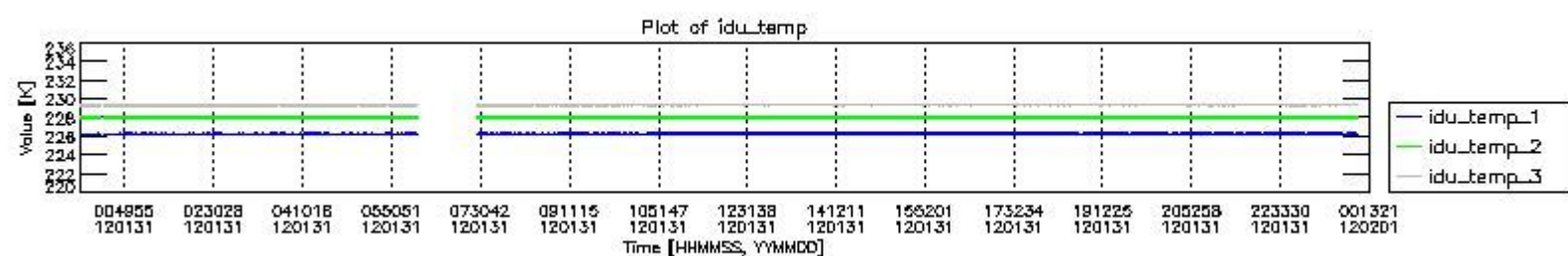
113816	1	0.0025241052
119948	1	0.0025241052
124800	36801	92.889596
124803	2805	7.0801151
125735	1	0.0025241052
126670	1	0.0025241052
127233	1	0.0025241052
129374	1	0.0025241052
135228	1	0.0025241052
140080	1	0.0025241052
147365	1	0.0025241052
149798	1	0.0025241052



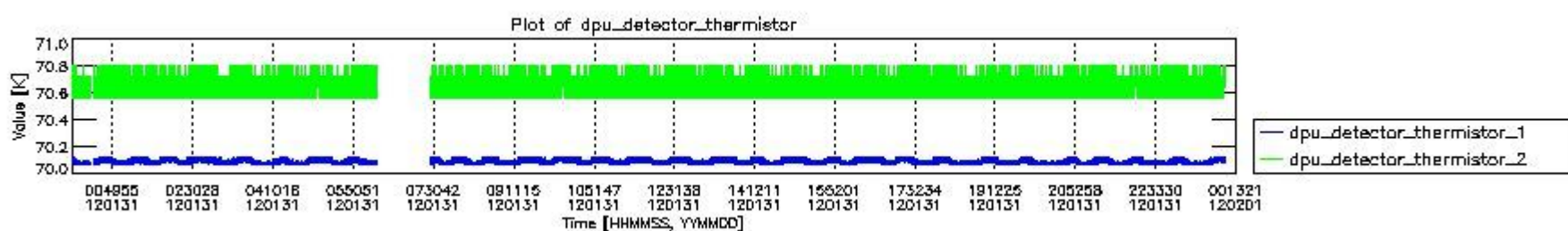
mipas\_daily\_report\_level0\_KSPT\_L0\_4504\_N\_20120131\_0.PNG



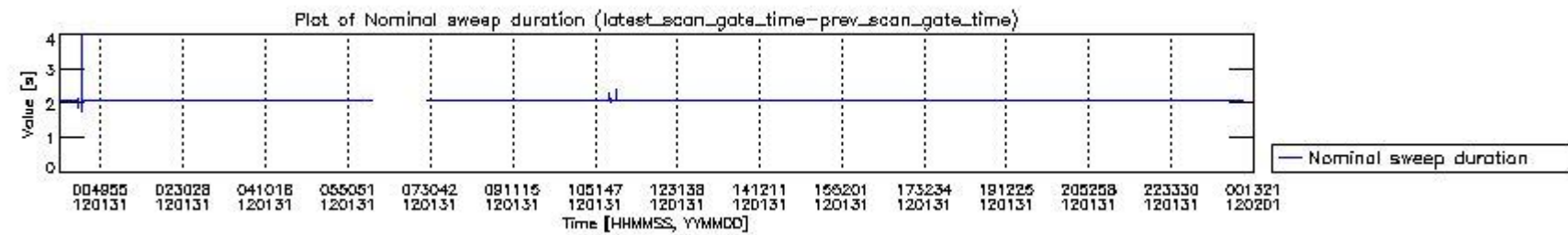
mipas\_daily\_report\_level0\_KSPT\_L0\_4504\_N\_20120131\_1.PNG



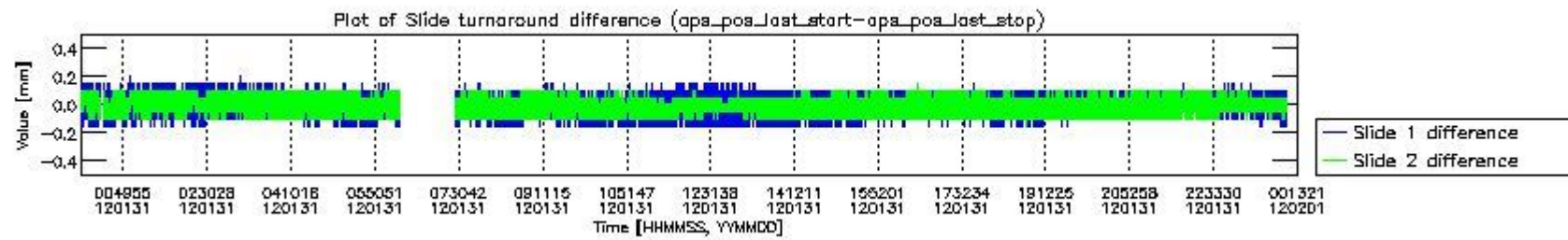
mipas\_daily\_report\_level0\_KSPT\_L0\_4504\_N\_20120131\_2.PNG



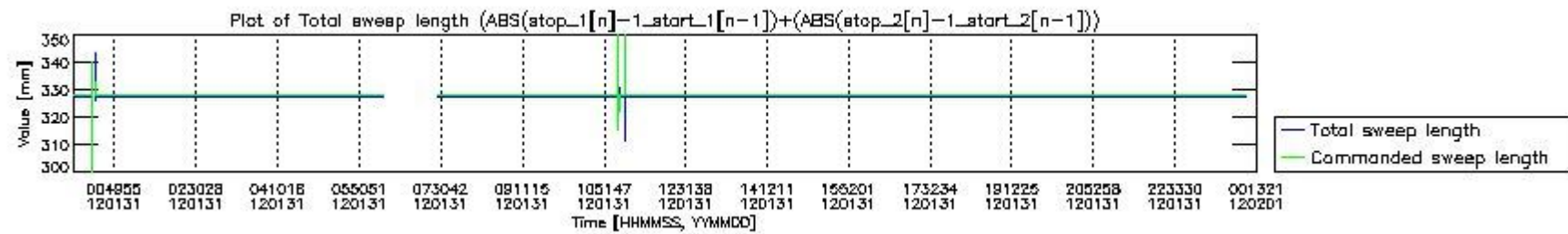
mipas\_daily\_report\_level0\_KSPT\_L0\_4504\_N\_20120131\_3.PNG



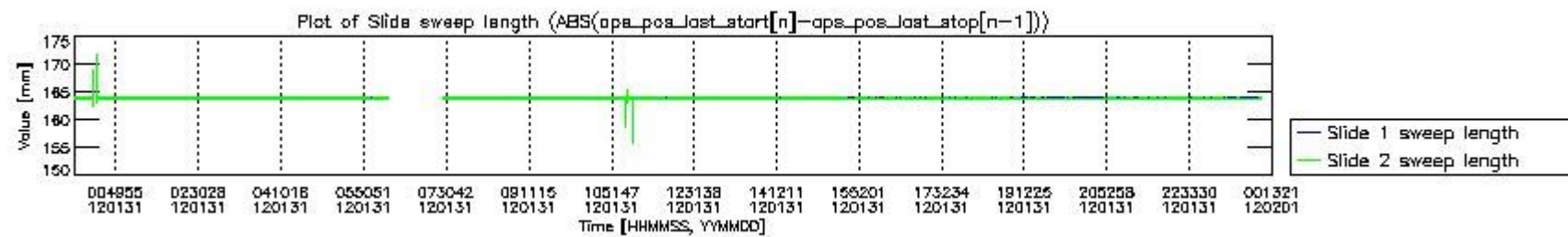
mipas\_daily\_report\_level0\_KSPT\_L0\_4504\_N\_20120131\_4.PNG



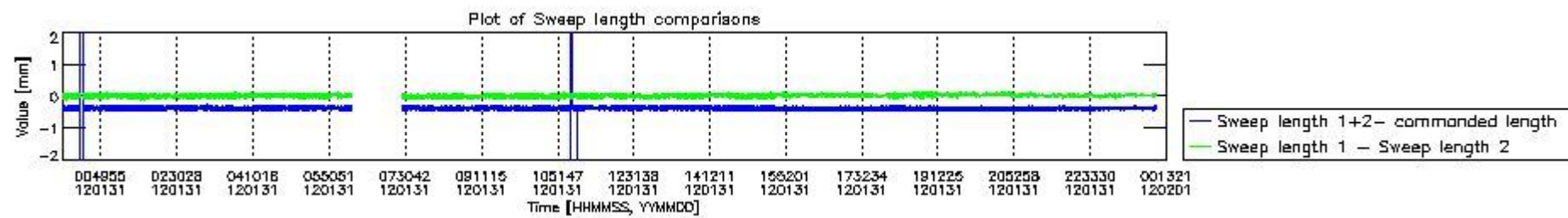
mipas\_daily\_report\_level0\_KSPT\_L0\_4504\_N\_20120131\_5.PNG



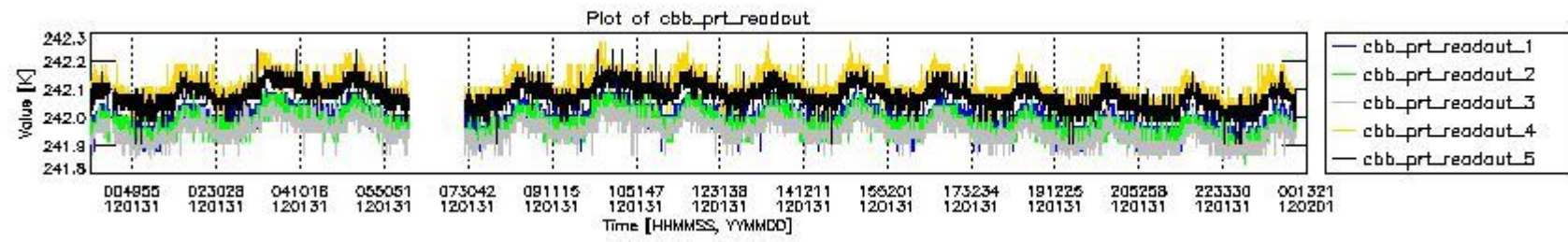
mipas\_daily\_report\_level0\_KSPT\_L0\_4504\_N\_20120131\_6.PNG



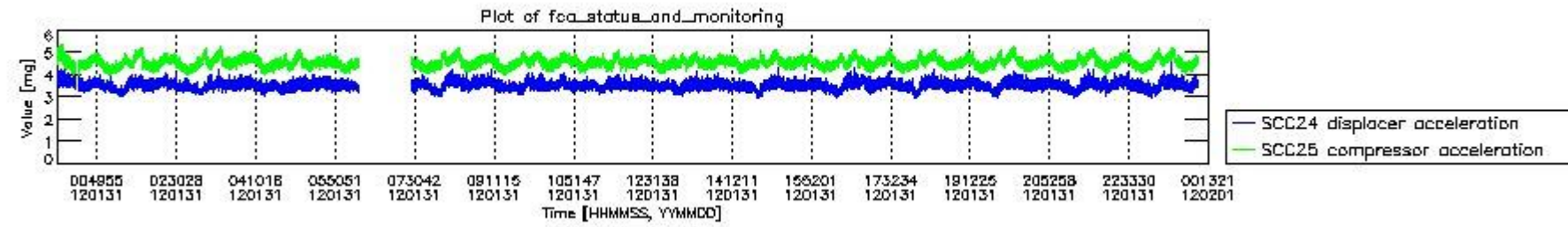
mipas\_daily\_report\_level0\_KSPT\_L0\_4504\_N\_20120131\_7.PNG



mipas\_daily\_report\_level0\_KSPT\_L0\_4504\_N\_20120131\_8.PNG



mipas\_daily\_report\_level0\_KSPT\_L0\_4504\_N\_20120131\_9.PNG



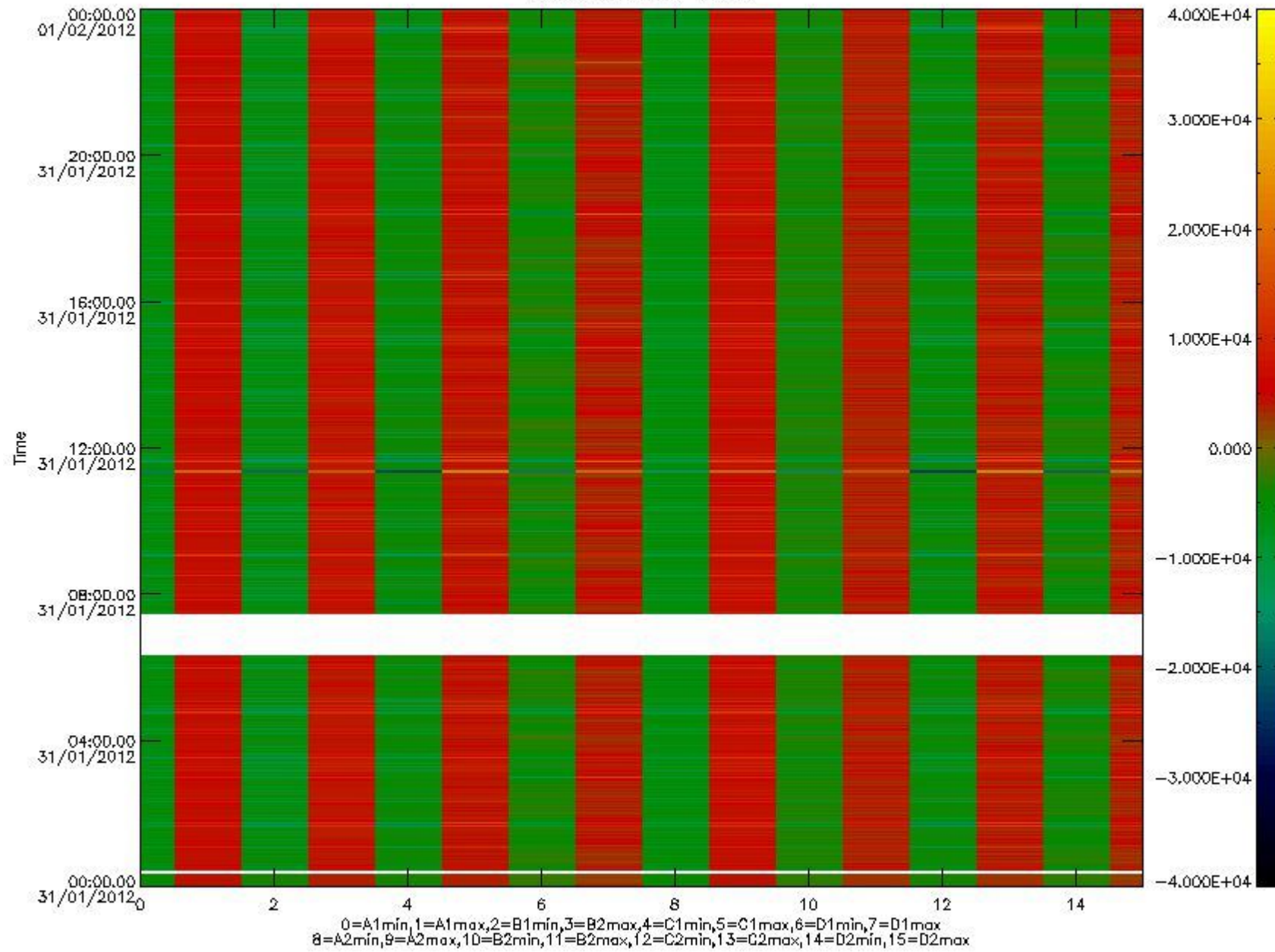
mipas\_daily\_report\_level0\_KSPT\_L0\_4504\_N\_20120131\_10.PNG

The following table shows channel statistics for all channels for this day.

Channel	Min	Max	ADC
A1	-17247	18162	16bit
B1	-18923	16436	16bit
C1	-24465	22153	16bit
D1	-27584	32767	16bit
A2	-15059	18376	16bit
B2	-16651	16444	16bit
C2	-23261	23656	16bit
D2	-32768	30574	16bit



MIPNLOP\_MIPSOUPAC\_aux\_fields\_igm\_cal, channel statistics plot  
Colour indicates value.



mipas\_daily\_report\_level0\_KSPT\_L0\_4504\_N\_20120131\_11.PNG

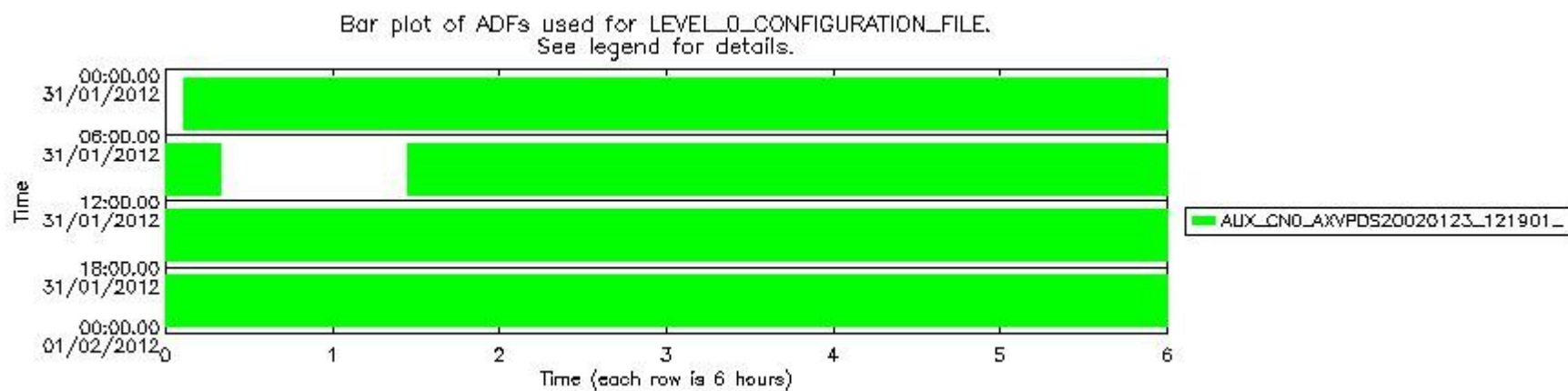
### 0.3 ADF monitoring

The use of ADFs is shown in two ways:

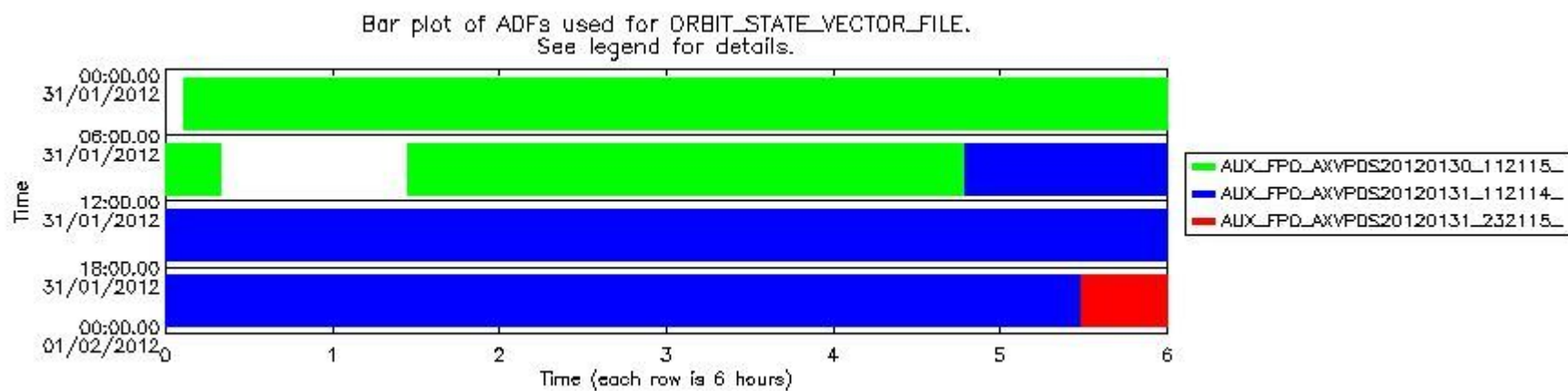
1. By means of two tables that can be used to find the ADF used for a specific product.
2. By means of plots that show changes in ADF using colours.

Number	ADF
0	AUX_CN0_AXVPDS20020123_121901_20020101_000000_20200101_000000
1	AUX_FPO_AXVPDS20120130_112115_20120129_195412_20120208_202738
2	AUX_FPO_AXVPDS20120131_112114_20120130_191727_20120209_213107
3	AUX_FPO_AXVPDS20120131_232115_20120131_101932_20120210_105258

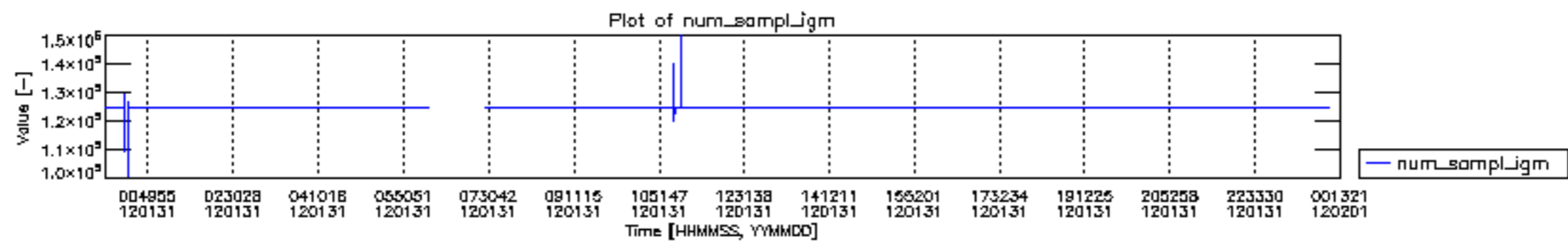
Number	Product name	#CNO	#FPO
0	MIP_NL__0PNPDE20120131_000622_000059623111_00145_51883_5457.N1	0	1
1	MIP_NL__0PNPDE20120131_014439_000043853111_00146_51884_5458.N1	0	1
2	MIP_NL__0PNPDE20120131_025713_000061983111_00147_51885_5459.N1	0	1
3	MIP_NL__0PNPDE20120131_043957_000059893111_00148_51886_5460.N1	0	1
4	MIP_NL__0PNPDK20120131_072644_000060103111_00150_51888_8408.N1	0	1
5	MIP_NL__0PNPDK20120131_090530_000061903111_00151_51889_8409.N1	0	1
6	MIP_NL__0PNPDK20120131_104702_000059753111_00152_51890_8410.N1	0	2
7	MIP_NL__0PNPDK20120131_122507_000060353111_00153_51891_8411.N1	0	2
8	MIP_NL__0PNPDK20120131_140444_000058993111_00154_51892_8412.N1	0	2
9	MIP_NL__0PNPDK20120131_154207_000058813111_00155_51893_8413.N1	0	2
10	MIP_NL__0PNPDK20120131_171907_000059293111_00156_51894_8414.N1	0	2
11	MIP_NL__0PNPDK20120131_185655_000059663111_00157_51895_8415.N1	0	2
12	MIP_NL__0PNPDE20120131_203448_000023103111_00158_51896_5461.N1	0	2
13	MIP_NL__0PNPDE20120131_211318_000021063111_00158_51896_5462.N1	0	2
14	MIP_NL__0PNPDE20120131_214719_000061963111_00158_51896_5463.N1	0	2
15	MIP_NL__0PNPDE20120131_232928_000060433111_00159_51897_5464.N1	0	3

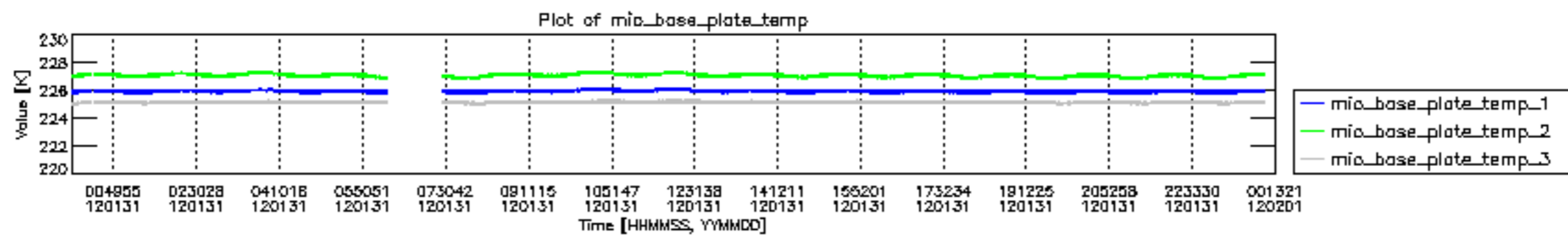


mipas\_daily\_report\_level0\_KSPT\_L0\_4504\_N\_20120131\_12.PNG

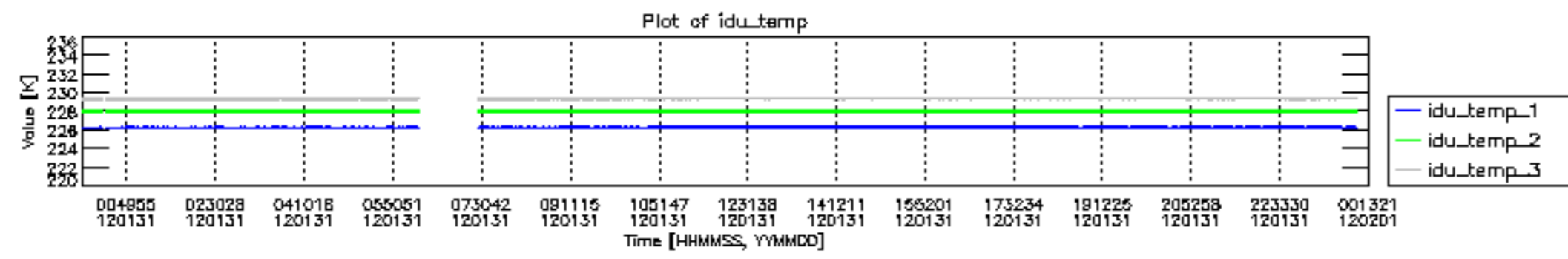


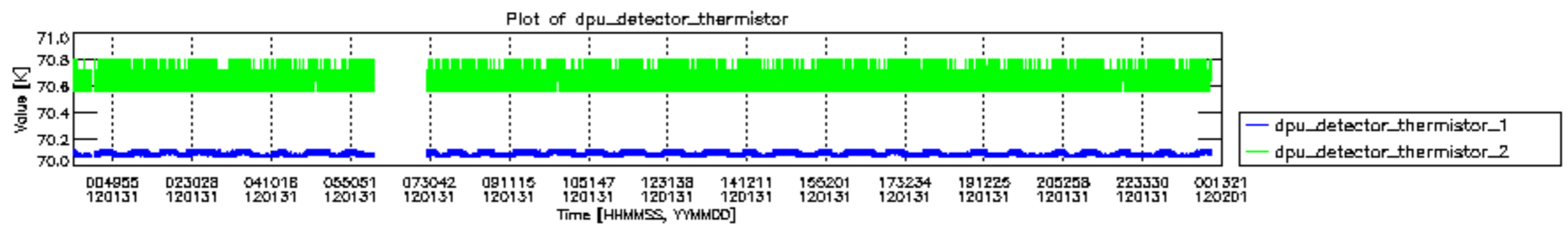
mipas\_daily\_report\_level0\_KSPT\_L0\_4504\_N\_20120131\_13.PNG

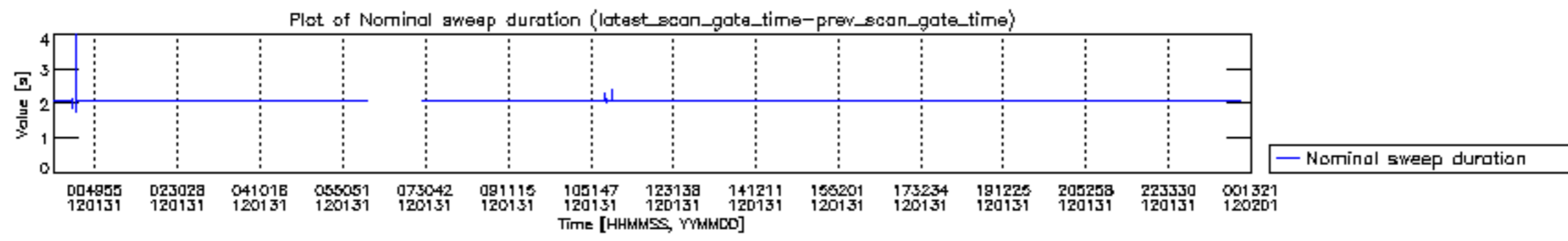


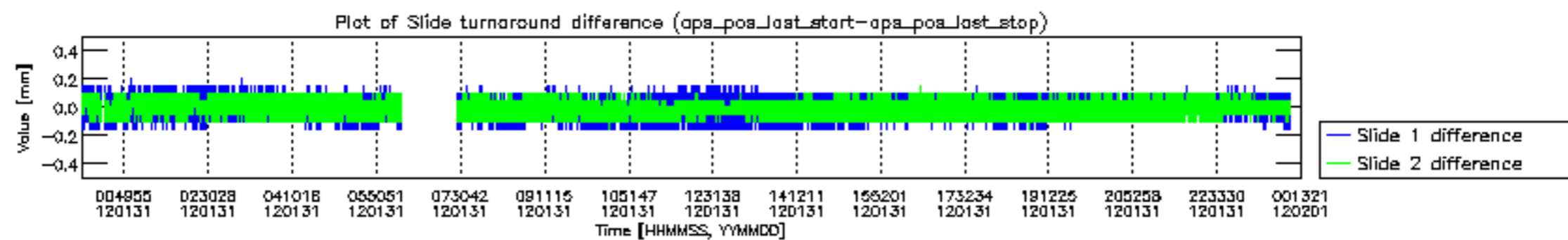


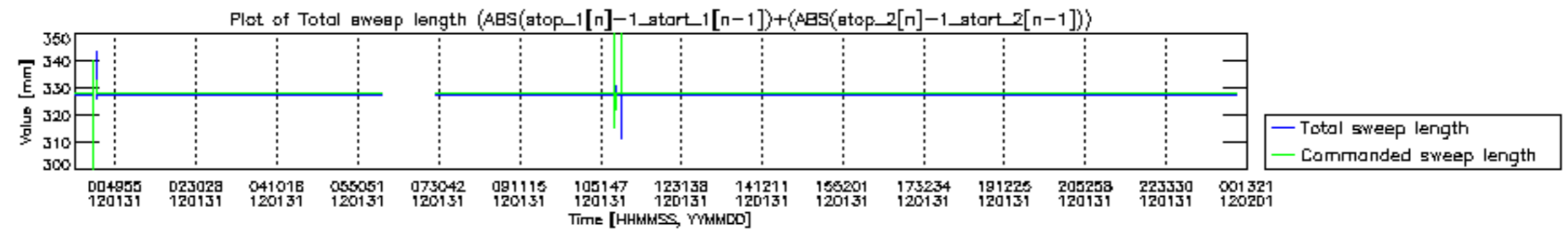




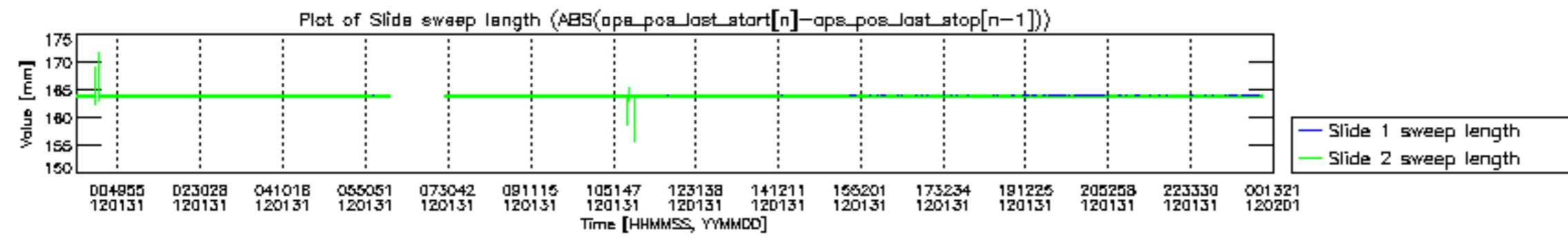


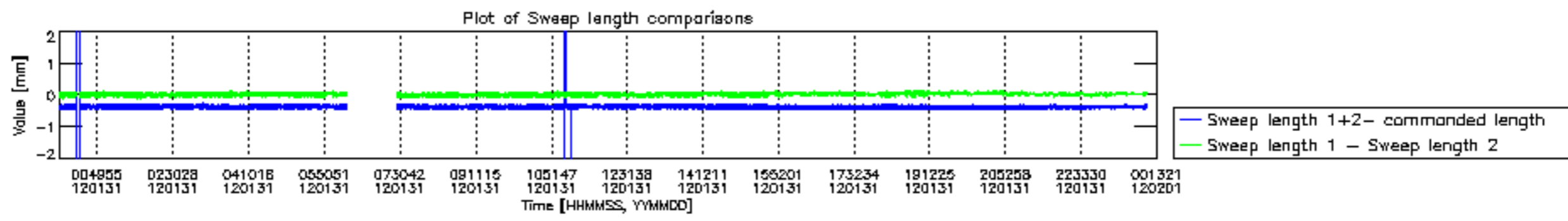


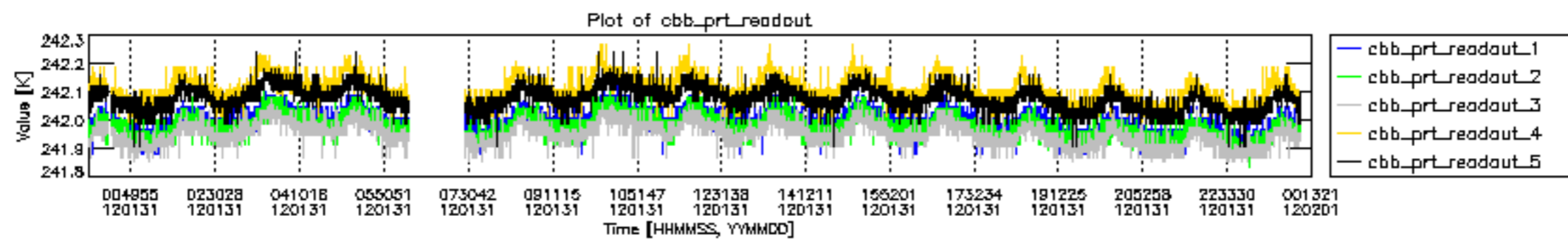


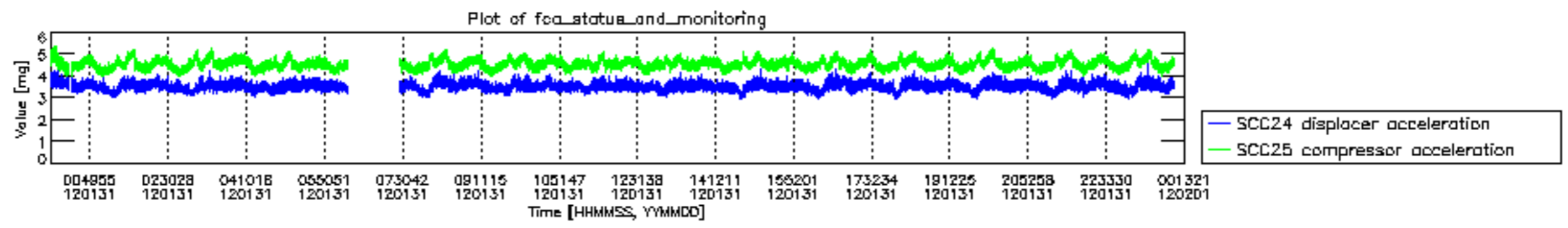












MIPNLOP\_MIPSOUPAC\_aux\_fields\_igm\_cal, channel statistics plot  
 Colour indicates value.

