

0. MIPAS Daily Report for level 0 products

[0.1 General Info](#)

[0.2 Instrument Operational Performance Parameters](#)

[0.3 ADF monitoring](#)

0.1 General Info

This report contains a daily analysis on parameters extracted from MIPAS level 0 data (The MIP_NL__0P product).

0.1.1 Report summary

The table below shows general characteristics of the data that are included into this report.

Item	Value
Report version	v1.6 08-11-2010
Time of report generation	04FEB2012 05:23:13
Data source version	KSPT_L0/4504-N
Processing scope for products	30JAN2012 00:00:00 to 31JAN2012 00:00:00
Start time of first product within scope	30JAN2012 00:42:08
Stop time of last product within scope	31JAN2012 00:07:31
Total number of level 0 products	14
Number of level 0 products with errors	0

0.1.2 Product Quality Indicators per product

The following table shows a summary for each product used in this report.

#	Product name	Start time	Stop time	Prod err	ISP err sign	ISP miss sign	ISP disc sign	rs sign
0	MIP_NL__0PNPDE20120130_004208_000058213111_00131_51869_5451.N1	30JAN2012 00:42:08	30JAN2012 02:19:09	0	0	0	0	0
1	MIP_NL__0PNPDE20120130_021810_000046273111_00132_51870_5452.N1	30JAN2012 02:18:10	30JAN2012 03:35:17	0	0	0	0	0
2	MIP_NL__0PNPDE20120130_033444_000061443111_00133_51871_5453.N1	30JAN2012 03:34:44	30JAN2012 05:17:08	0	0	0	0	0
3	MIP_NL__0PNPDE20120130_051634_000060483111_00134_51872_5454.N1	30JAN2012 05:16:34	30JAN2012 06:57:22	0	0	0	0	0
4	MIP_NL__0PNPDK20120130_080224_000061733111_00136_51874_8399.N1	30JAN2012 08:02:24	30JAN2012 09:45:17	0	0	0	0	0
5	MIP_NL__0PNPDK20120130_094334_000061003111_00137_51875_8400.N1	30JAN2012 09:43:34	30JAN2012 11:25:14	0	0	0	0	0
6	MIP_NL__0PNPDK20120130_112332_000059433111_00138_51876_8401.N1	30JAN2012 11:23:32	30JAN2012 13:02:35	0	0	0	0	0
7	MIP_NL__0PNPDK20120130_130134_000059293111_00139_51877_8402.N1	30JAN2012 13:01:34	30JAN2012 14:40:23	0	0	0	0	0
8	MIP_NL__0PNPDK20120130_143925_000059413111_00140_51878_8403.N1	30JAN2012 14:39:25	30JAN2012 16:18:26	0	0	0	0	0
9	MIP_NL__0PNPDK20120130_161740_000059473111_00141_51879_8404.N1	30JAN2012 16:17:40	30JAN2012 17:56:47	0	0	0	0	0
10	MIP_NL__0PNPDK20120130_175547_000058953111_00142_51880_8405.N1	30JAN2012 17:55:47	30JAN2012 19:34:02	0	0	0	0	0
11	MIP_NL__0PNPDK20120130_193152_000062443111_00143_51881_8406.N1	30JAN2012 19:31:52	30JAN2012 21:15:56	0	0	0	0	0
12	MIP_NL__0PNPDE20120130_211456_000042413111_00144_51882_5455.N1	30JAN2012 21:14:56	30JAN2012 22:25:36	0	0	0	0	0
13	MIP_NL__0PNPDE20120130_222427_000061833111_00144_51882_5456.N1	30JAN2012 22:24:27	31JAN2012 00:07:31	0	0	0	0	0

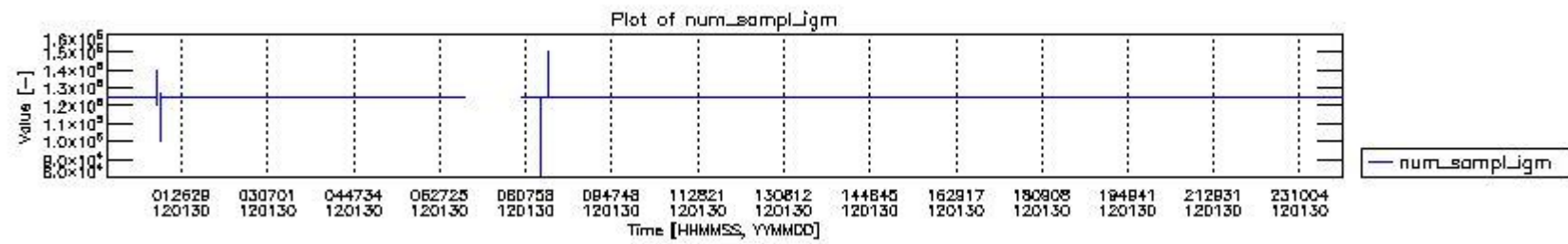
0.2 Instrument Operational Performance Parameters

The following plots give an overview of various instrument parameters for this day. The instrument parameters are part of the auxiliary data field within the source packets of the MIP_NL__0P product. The auxiliary data is normally included twice per interferogram. Note that only the first packet is currently included in monitoring.

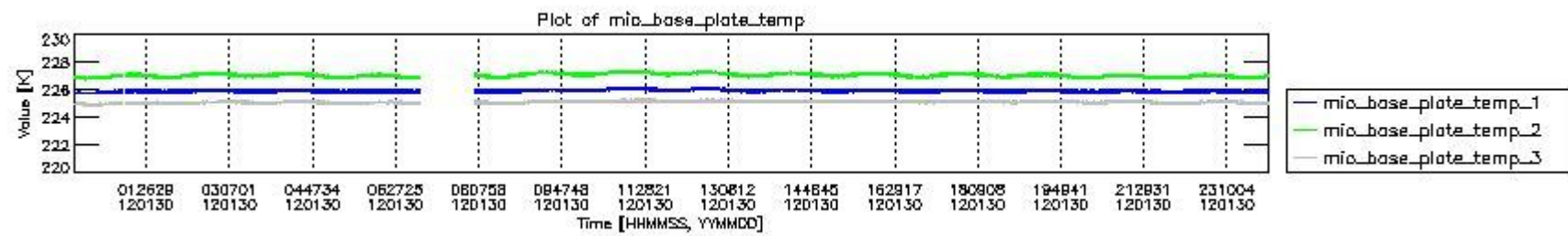
The following table shows the counts of various interferogram number of samples

Number of igm samples	Count [#]	Count [%]
80958	1	0.0025197803
92813	1	0.0025197803
100483	1	0.0025197803
112945	1	0.0025197803

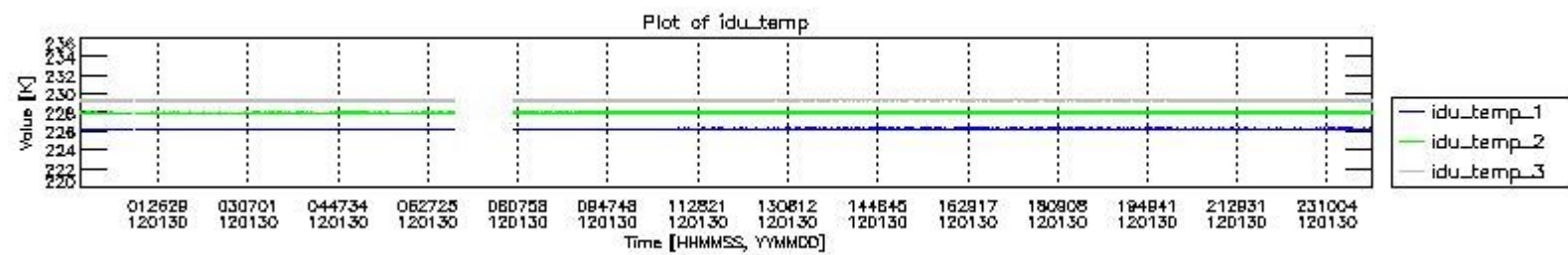
120022	1	0.0025197803
124800	37392	94.219624
124803	2282	5.7501386
125735	1	0.0025197803
126670	1	0.0025197803
127531	1	0.0025197803
135376	1	0.0025197803
140154	1	0.0025197803
147663	1	0.0025197803
150394	1	0.0025197803



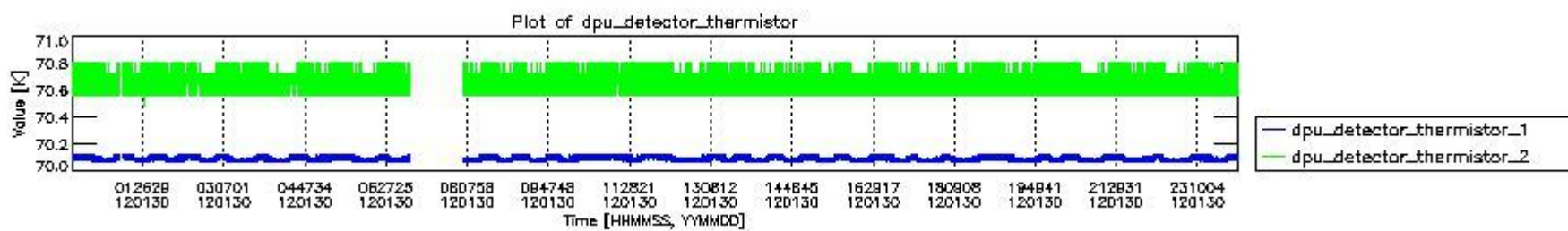
mipas_daily_report_level0_KSPT_L0_4504_N_20120130_0.PNG



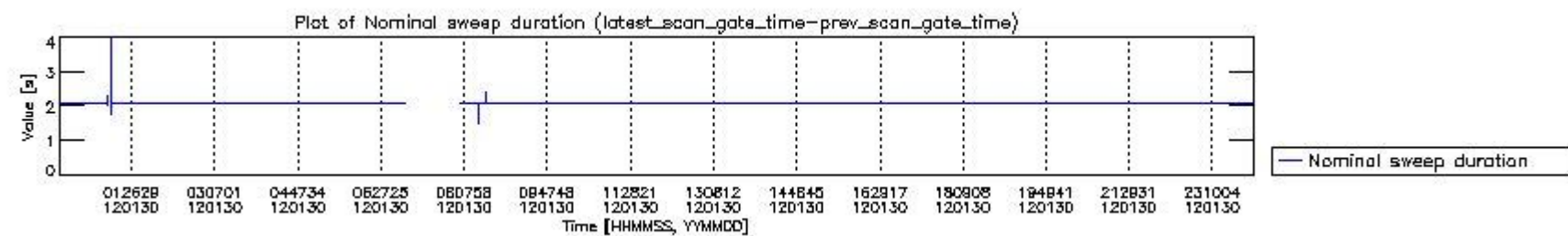
mipas_daily_report_level0_KSPT_L0_4504_N_20120130_1.PNG



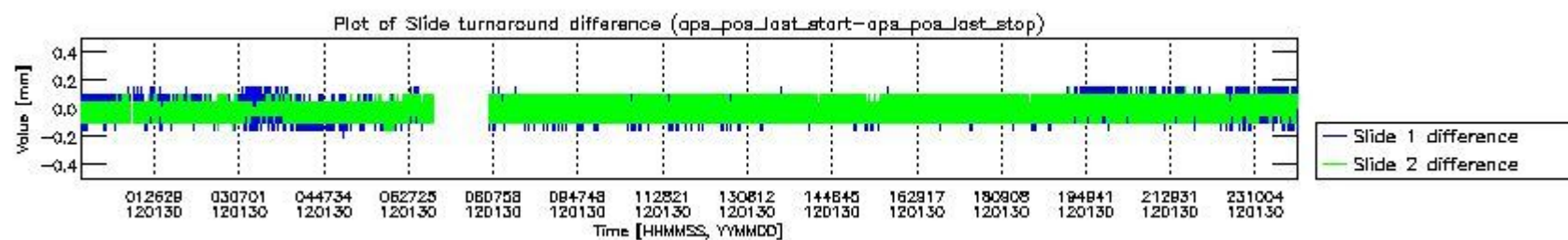
mipas_daily_report_level0_KSPT_L0_4504_N_20120130_2.PNG



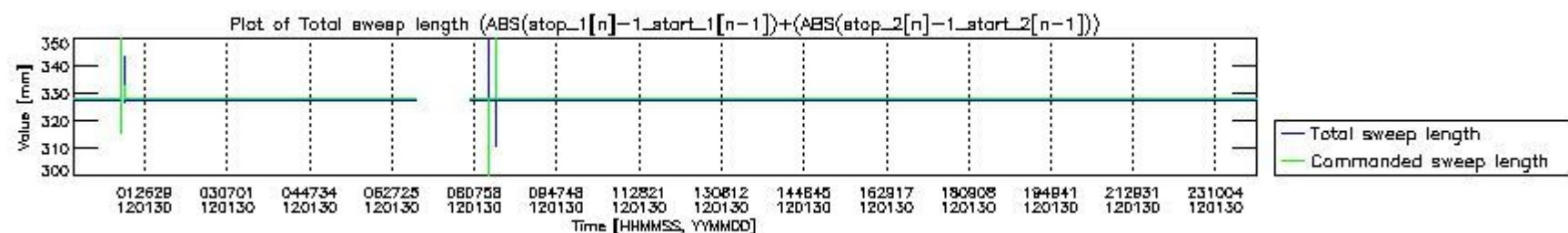
mipas_daily_report_level0_KSPT_L0_4504_N_20120130_3.PNG



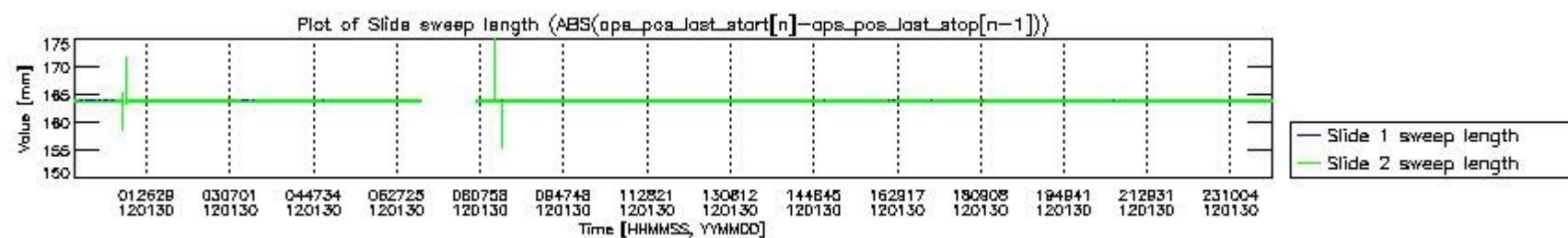
mipas_daily_report_level0_KSPT_L0_4504_N_20120130_4.PNG



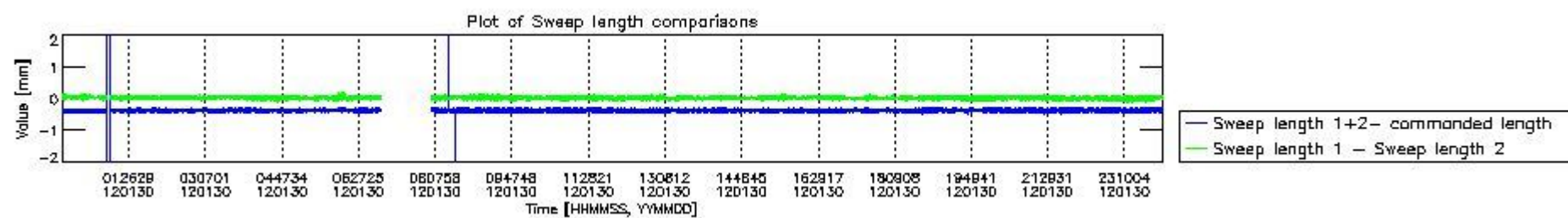
mipas_daily_report_level0_KSPT_L0_4504_N_20120130_5.PNG



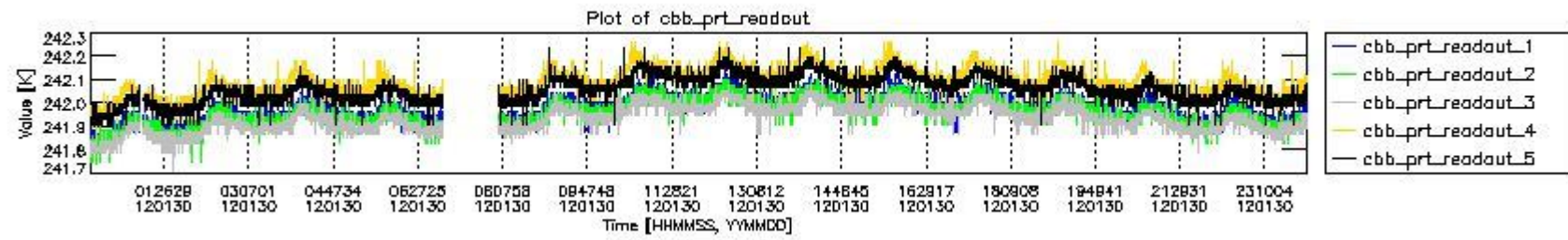
mipas_daily_report_level0_KSPT_L0_4504_N_20120130_6.PNG



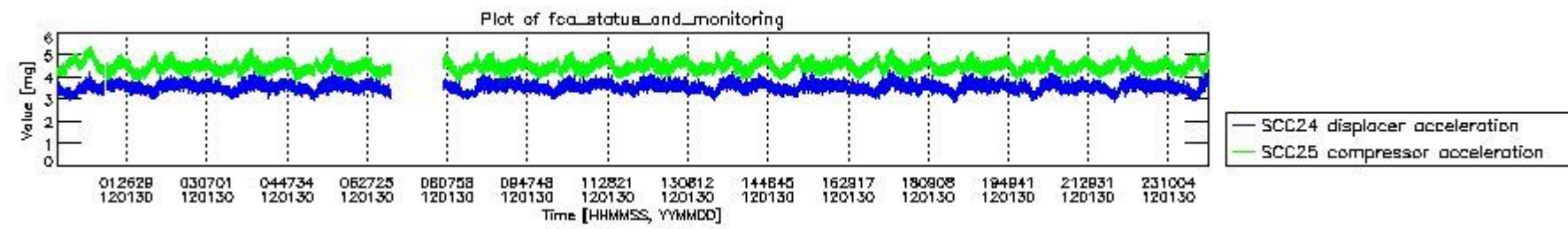
mipas_daily_report_level0_KSPT_L0_4504_N_20120130_7.PNG



mipas_daily_report_level0_KSPT_L0_4504_N_20120130_8.PNG



mipas_daily_report_level0_KSPT_L0_4504_N_20120130_9.PNG

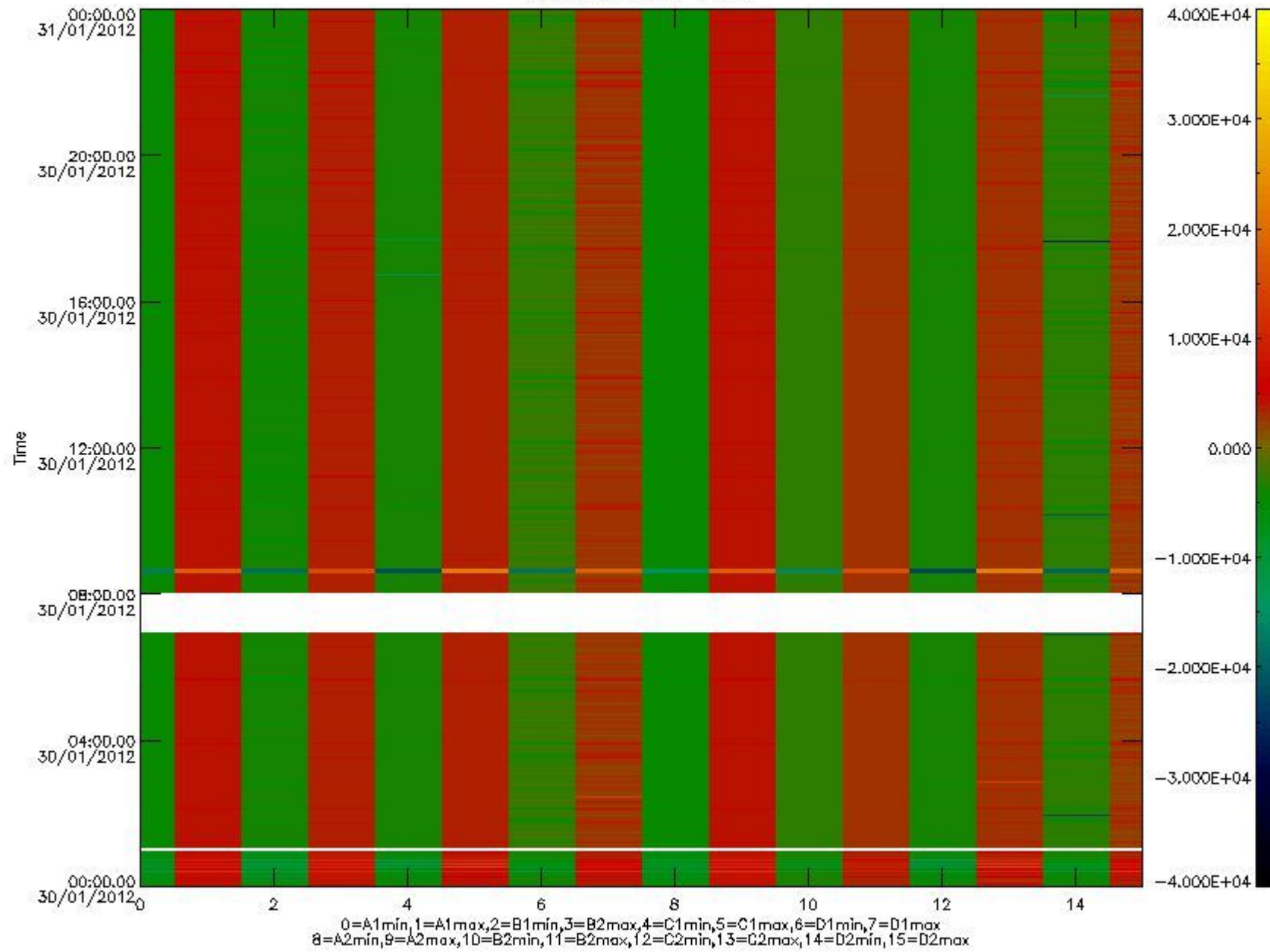


mipas_daily_report_level0_KSPT_L0_4504_N_20120130_10.PNG

The following table shows channel statistics for all channels for this day.

Channel	Min	Max	ADC
A1	-17256	18172	16bit
B1	-18927	16448	16bit
C1	-23653	22198	16bit
D1	-19606	32767	16bit
A2	-15064	18392	16bit
B2	-16653	16466	16bit
C2	-23332	22830	16bit
D2	-32768	21537	16bit

MIPNLOP_MIPSOUPAC_aux_fields_igm_cal, channel statistics plot
Colour indicates value.



mipas_daily_report_level0_KSPT_L0_4504_N_20120130_11.PNG

0.3 ADF monitoring

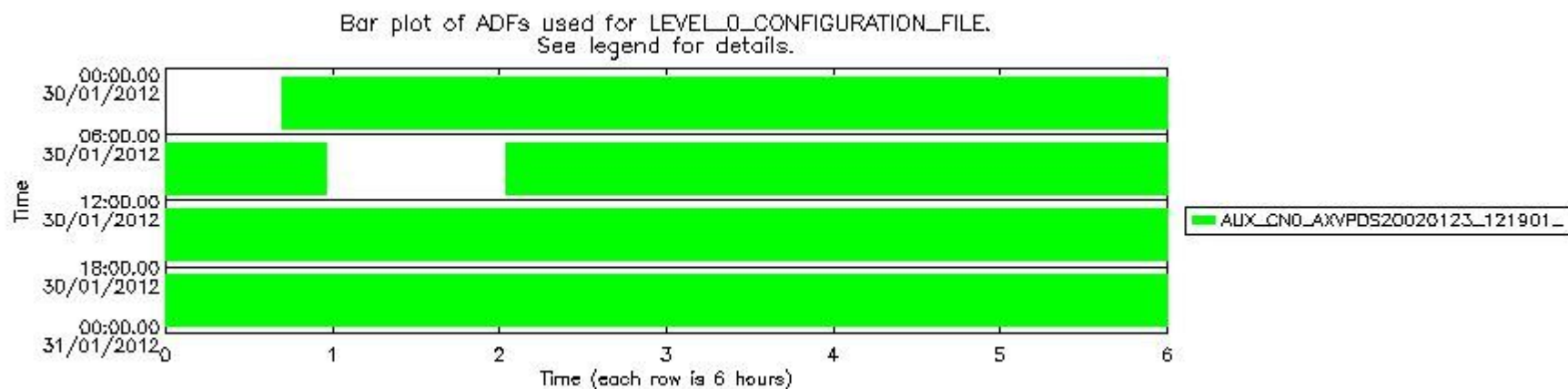
The use of ADFs is shown in two ways:

1. By means of two tables that can be used to find the ADF used for a specific product.
2. By means of plots that show changes in ADF using colours.

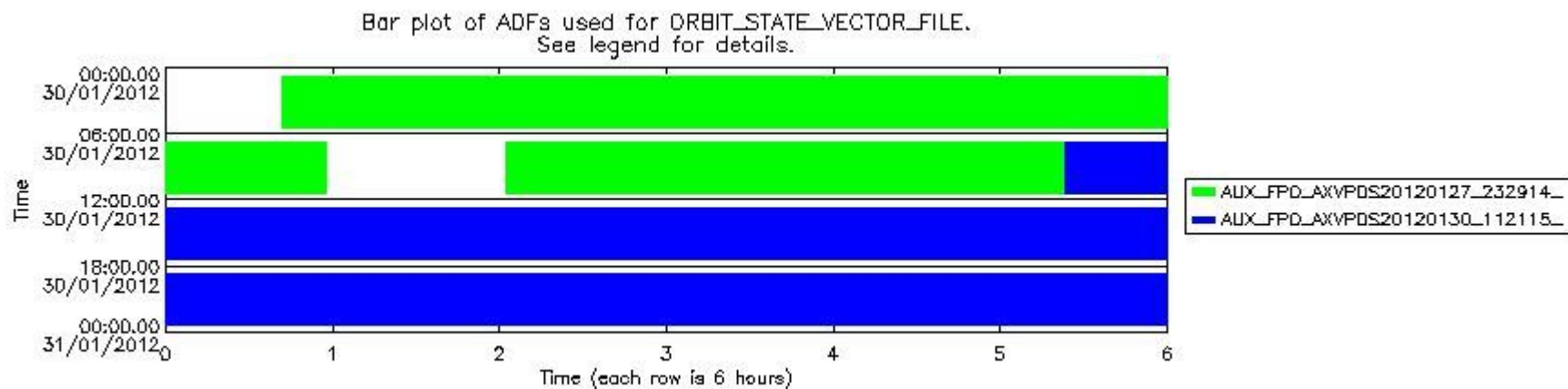
Number	ADF
0	AUX_CN0_AXVPDS20020123_121901_20020101_000000_20200101_000000
1	AUX_FPO_AXVPDS20120127_232914_20120126_182400_20120205_203739
2	AUX_FPO_AXVPDS20120130_112115_20120129_195412_20120208_202738

Number	Product name	#CN0	#FPO
--------	--------------	------	------

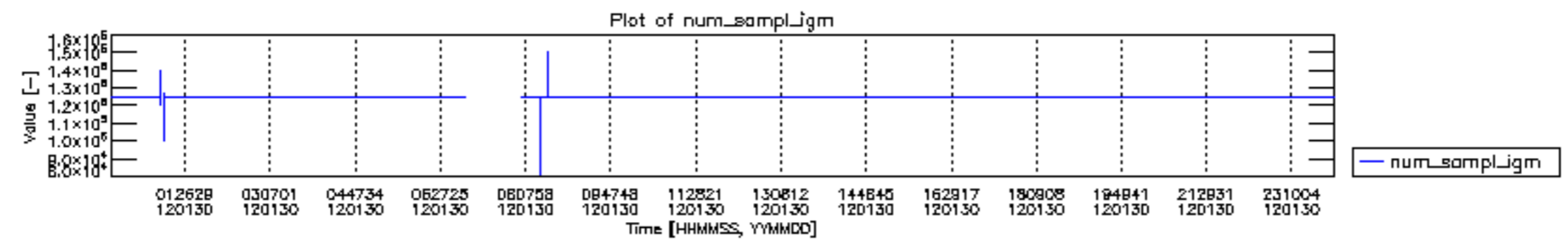
0	MIP_NL__0PNPDE20120130_004208_000058213111_00131_51869_5451.N1	0	1
1	MIP_NL__0PNPDE20120130_021810_000046273111_00132_51870_5452.N1	0	1
2	MIP_NL__0PNPDE20120130_033444_000061443111_00133_51871_5453.N1	0	1
3	MIP_NL__0PNPDE20120130_051634_000060483111_00134_51872_5454.N1	0	1
4	MIP_NL__0PNPDK20120130_080224_000061733111_00136_51874_8399.N1	0	1
5	MIP_NL__0PNPDK20120130_094334_000061003111_00137_51875_8400.N1	0	1
6	MIP_NL__0PNPDK20120130_112332_000059433111_00138_51876_8401.N1	0	2
7	MIP_NL__0PNPDK20120130_130134_000059293111_00139_51877_8402.N1	0	2
8	MIP_NL__0PNPDK20120130_143925_000059413111_00140_51878_8403.N1	0	2
9	MIP_NL__0PNPDK20120130_161740_000059473111_00141_51879_8404.N1	0	2
10	MIP_NL__0PNPDK20120130_175547_000058953111_00142_51880_8405.N1	0	2
11	MIP_NL__0PNPDK20120130_193152_000062443111_00143_51881_8406.N1	0	2
12	MIP_NL__0PNPDE20120130_211456_000042413111_00144_51882_5455.N1	0	2
13	MIP_NL__0PNPDE20120130_222427_000061833111_00144_51882_5456.N1	0	2

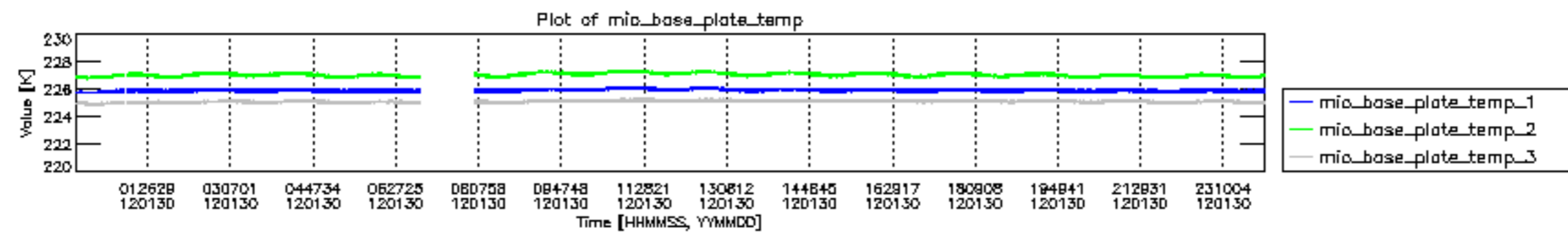


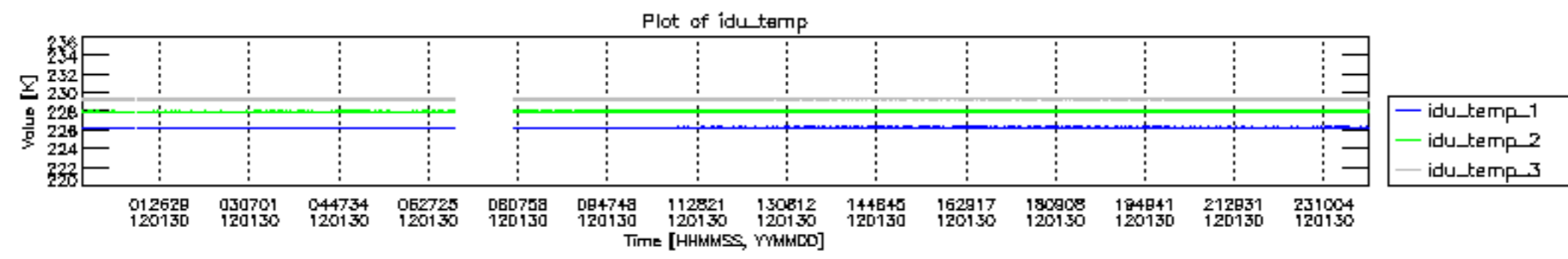
mipas_daily_report_level0_KSPT_L0_4504_N_20120130_12.PNG

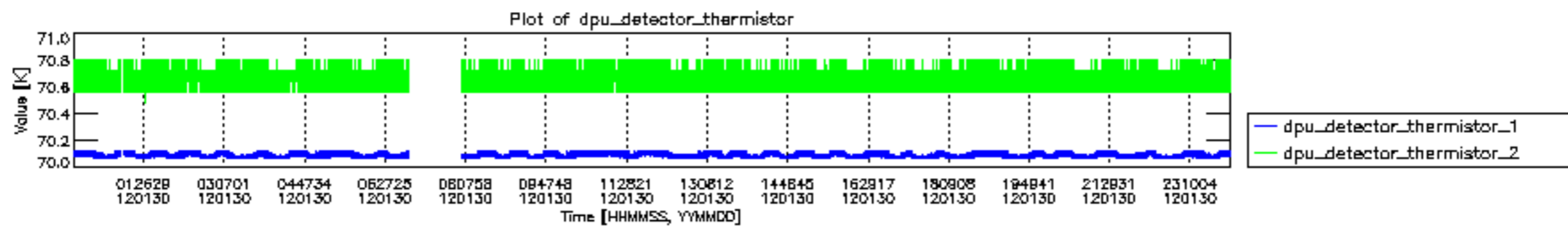


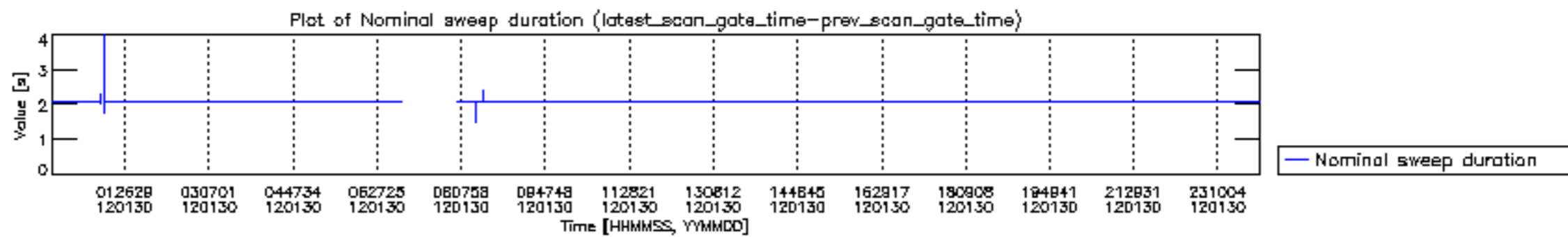
mipas_daily_report_level0_KSPT_L0_4504_N_20120130_13.PNG

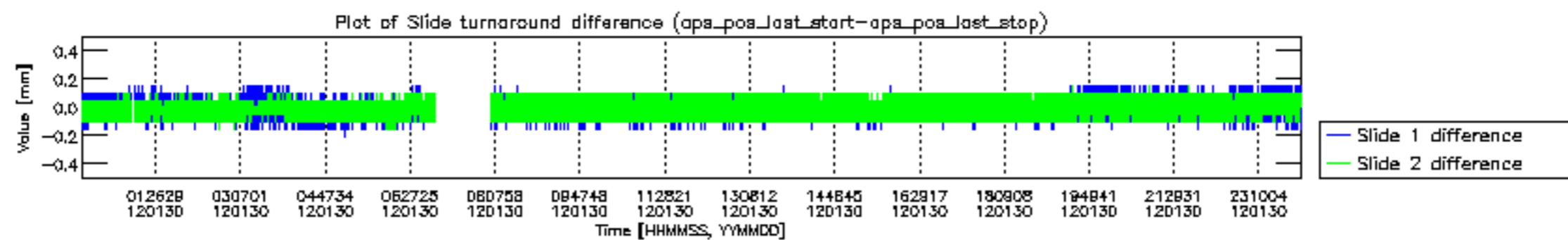


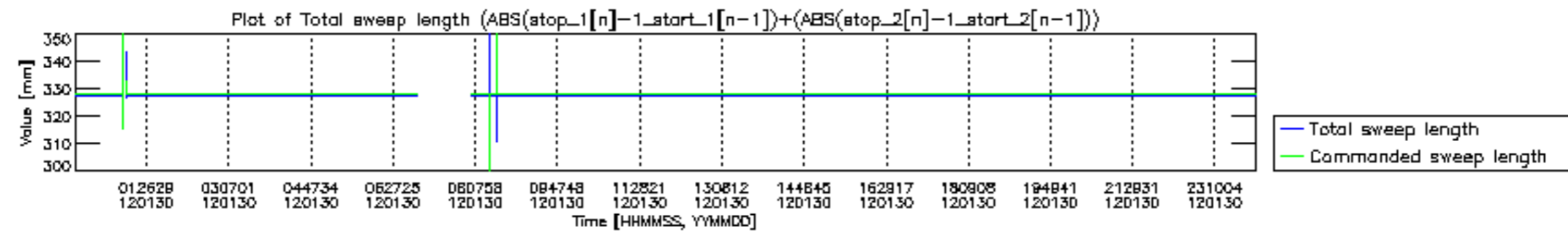


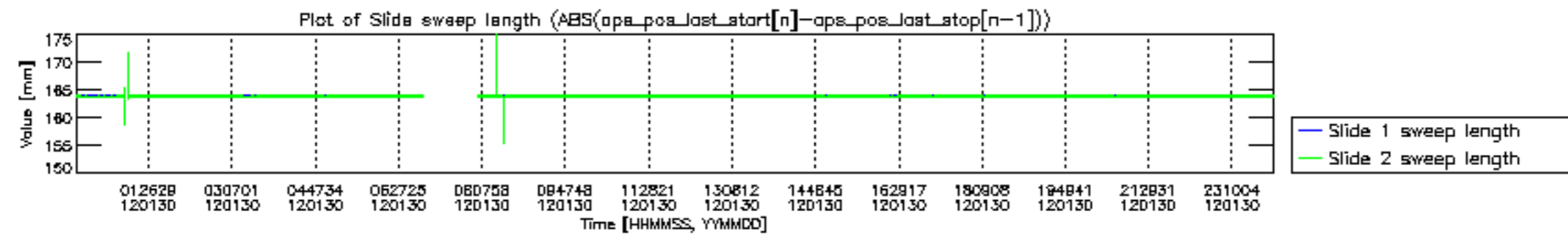


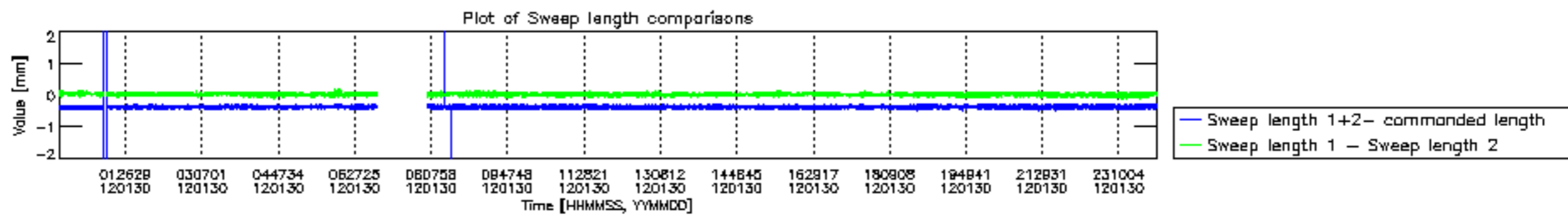


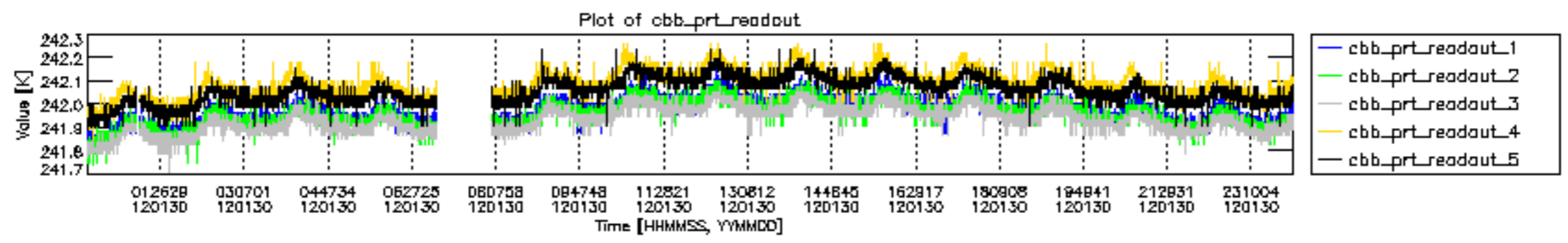


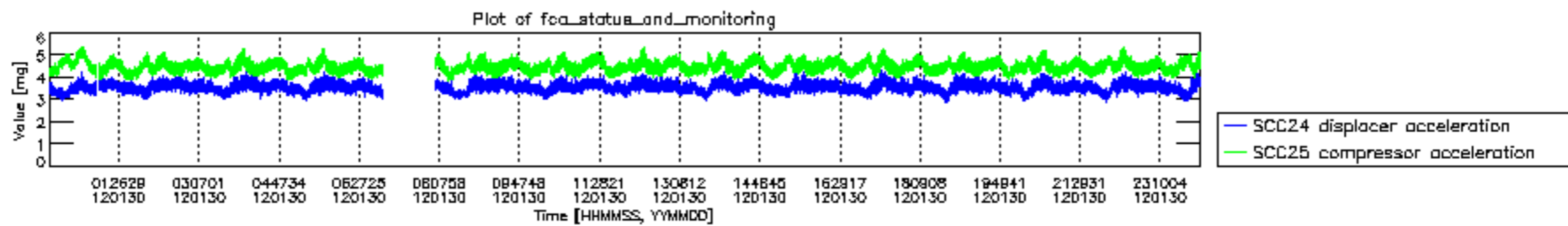












MIPNLOP_MIPSOUPAC_aux_fields_igm_cal, channel statistics plot
 Colour indicates value.

