

0. MIPAS Daily Report for level 0 products

[0.1 General Info](#)

[0.2 Instrument Operational Performance Parameters](#)

[0.3 ADF monitoring](#)

0.1 General Info

This report contains a daily analysis on parameters extracted from MIPAS level 0 data (The MIP_NL__0P product).

0.1.1 Report summary

The table below shows general characteristics of the data that are included into this report.

Item	Value
Report version	v1.6 08-11-2010
Time of report generation	03FEB2012 05:24:53
Data source version	KSPT_L0/4504-N
Processing scope for products	29JAN2012 00:00:00 to 30JAN2012 00:00:00
Start time of first product within scope	29JAN2012 01:19:34
Stop time of last product within scope	30JAN2012 00:43:15
Total number of level 0 products	16
Number of level 0 products with errors	0

0.1.2 Product Quality Indicators per product

The following table shows a summary for each product used in this report.

#	Product name	Start time	Stop time	Prod err	ISP err sign	ISP miss sign	ISP disc sign	rs sign
0	MIP_NL__0PNPDE20120129_011934_000102673111_00117_51855_5445.N1	29JAN2012 01:19:34	29JAN2012 04:10:41	0	0	0	0	0
1	MIP_NL__0PNPDE20120129_013928_000013623111_00118_51856_0724.N1	29JAN2012 01:39:28	29JAN2012 02:02:10	0	0	0	0	0
2	MIP_NL__0PNPDE20120129_020213_000077083111_00118_51856_0723.N1	29JAN2012 02:02:13	29JAN2012 04:10:41	0	0	0	0	0
3	MIP_NL__0PNPDE20120129_041008_000062523111_00119_51857_5446.N1	29JAN2012 04:10:08	29JAN2012 05:54:20	0	0	0	0	0
4	MIP_NL__0PNPDE20120129_055346_000061523111_00120_51858_5447.N1	29JAN2012 05:53:46	29JAN2012 07:36:19	0	0	0	0	0
5	MIP_NL__0PNPDK20120129_073545_000038813111_00121_51859_8390.N1	29JAN2012 07:35:45	29JAN2012 08:40:27	0	0	0	0	0
6	MIP_NL__0PNPDK20120129_083928_000061393111_00122_51860_8391.N1	29JAN2012 08:39:28	29JAN2012 10:21:47	0	0	0	0	0
7	MIP_NL__0PNPDK20120129_102007_000060683111_00123_51861_8392.N1	29JAN2012 10:20:07	29JAN2012 12:01:15	0	0	0	0	0
8	MIP_NL__0PNPDK20120129_115933_000059853111_00124_51862_8393.N1	29JAN2012 11:59:33	29JAN2012 13:39:18	0	0	0	0	0
9	MIP_NL__0PNPDK20120129_133756_000058623111_00125_51863_8394.N1	29JAN2012 13:37:56	29JAN2012 15:15:38	0	0	0	0	0
10	MIP_NL__0PNPDK20120129_151454_000060103111_00126_51864_8395.N1	29JAN2012 15:14:54	29JAN2012 16:55:04	0	0	0	0	0
11	MIP_NL__0PNPDK20120129_165431_000058623111_00127_51865_8396.N1	29JAN2012 16:54:31	29JAN2012 18:32:13	0	0	0	0	0
12	MIP_NL__0PNPDK20120129_183112_000059583111_00128_51866_8397.N1	29JAN2012 18:31:12	29JAN2012 20:10:30	0	0	0	0	0
13	MIP_NL__0PNPDE20120129_200826_000043683111_00129_51867_5448.N1	29JAN2012 20:08:26	29JAN2012 21:21:14	0	0	0	0	0
14	MIP_NL__0PNPDE20120129_212014_000061733111_00129_51867_5449.N1	29JAN2012 21:20:14	29JAN2012 23:03:07	0	0	0	0	0
15	MIP_NL__0PNPDE20120129_230202_000060733111_00130_51868_5450.N1	29JAN2012 23:02:02	30JAN2012 00:43:15	0	0	0	0	0

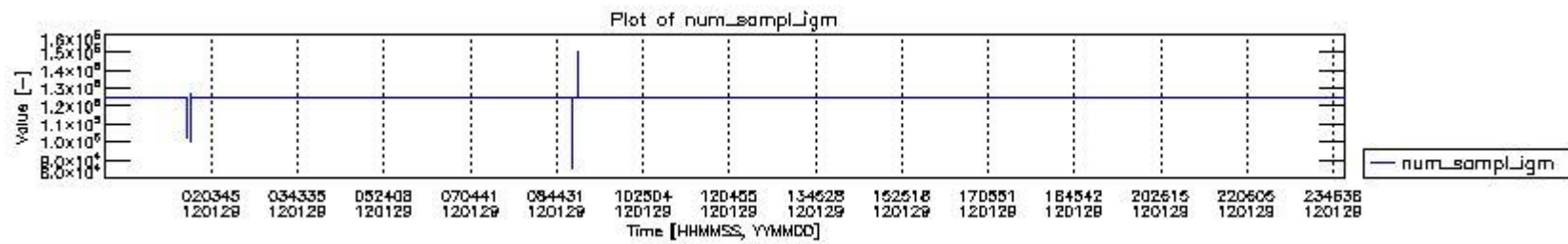
0.2 Instrument Operational Performance Parameters

The following plots give an overview of various instrument parameters for this day. The instrument parameters are part of the auxiliary data field within the source packets of the MIP_NL__0P product. The auxiliary data is normally included twice per interferogram. Note that only the first packet is currently included in monitoring.

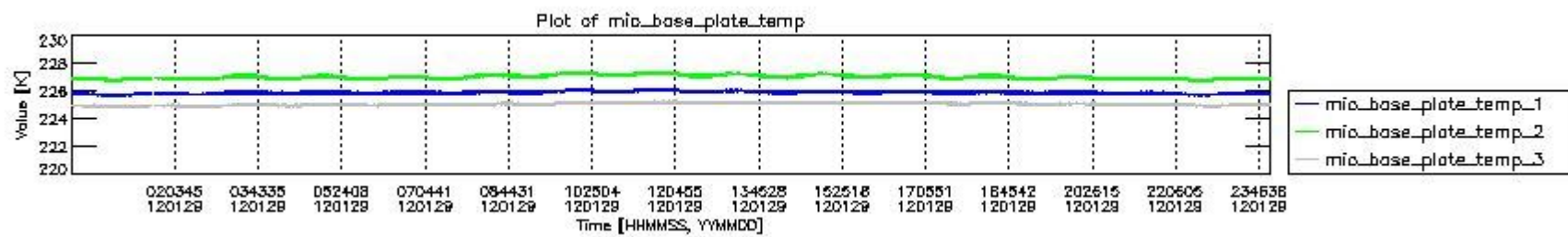
The following table shows the counts of various interferogram number of samples

Number of igm samples	Count [#]	Count [%]
84824	1	0.0024054652
94749	1	0.0024054652

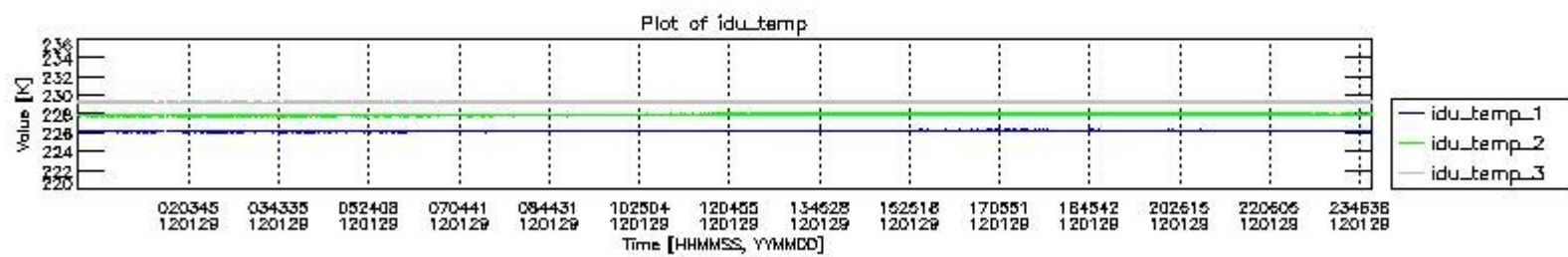
100706	1	0.0024054652
101922	1	0.0024054652
103298	1	0.0024054652
114878	1	0.0024054652
123427	1	0.0024054652
124800	38647	92.964014
124803	2913	7.0071202
125958	1	0.0024054652
127116	1	0.0024054652
127605	1	0.0024054652
147737	1	0.0024054652
150542	1	0.0024054652



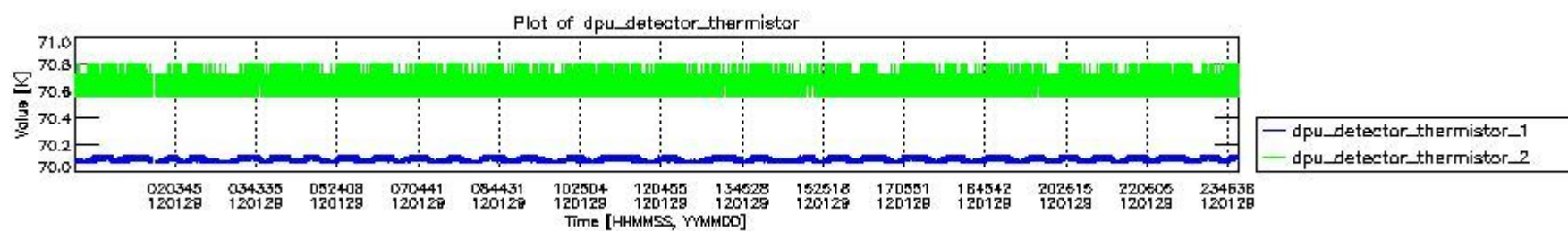
mipas_daily_report_level0_KSPT_L0_4504_N_20120129_0.PNG



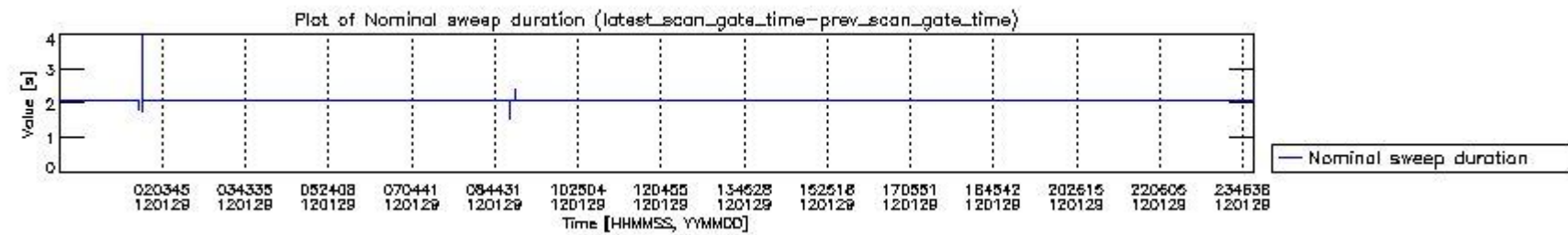
mipas_daily_report_level0_KSPT_L0_4504_N_20120129_1.PNG



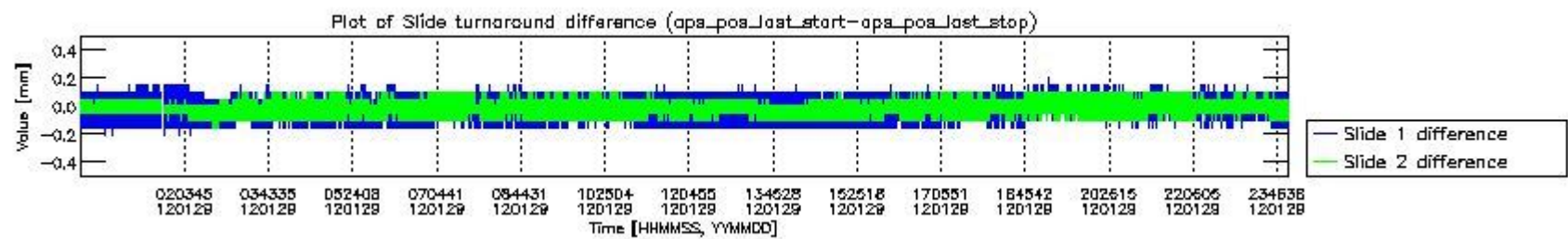
mipas_daily_report_level0_KSPT_L0_4504_N_20120129_2.PNG



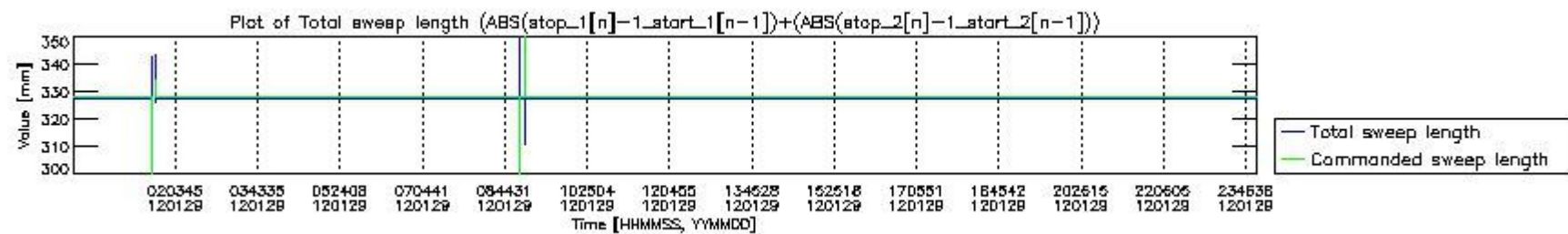
mipas_daily_report_level0_KSPT_L0_4504_N_20120129_3.PNG



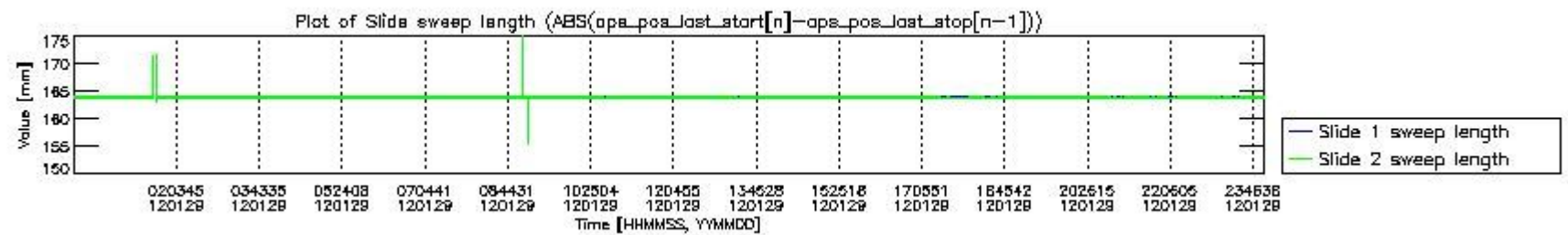
mipas_daily_report_level0_KSPT_L0_4504_N_20120129_4.PNG



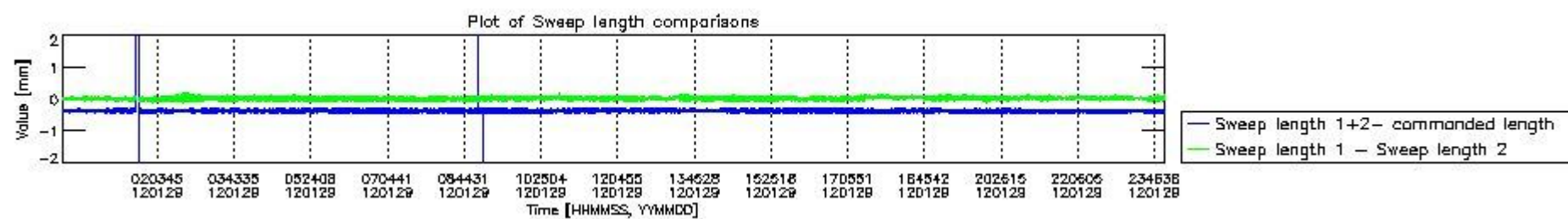
mipas_daily_report_level0_KSPT_L0_4504_N_20120129_5.PNG



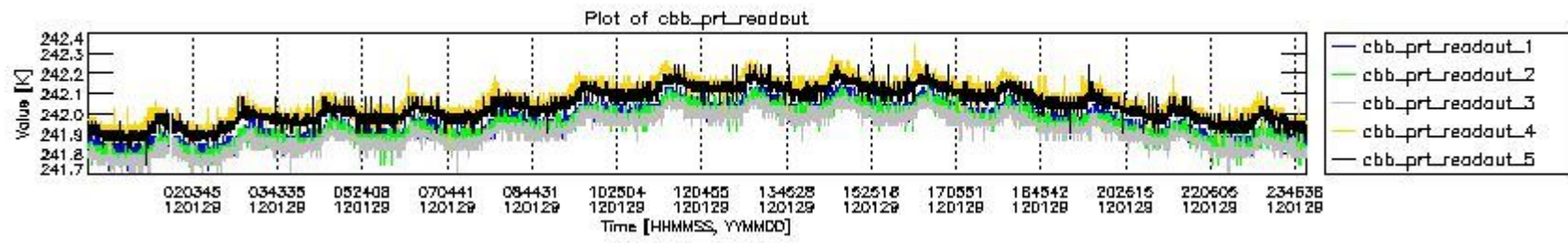
mipas_daily_report_level0_KSPT_L0_4504_N_20120129_6.PNG



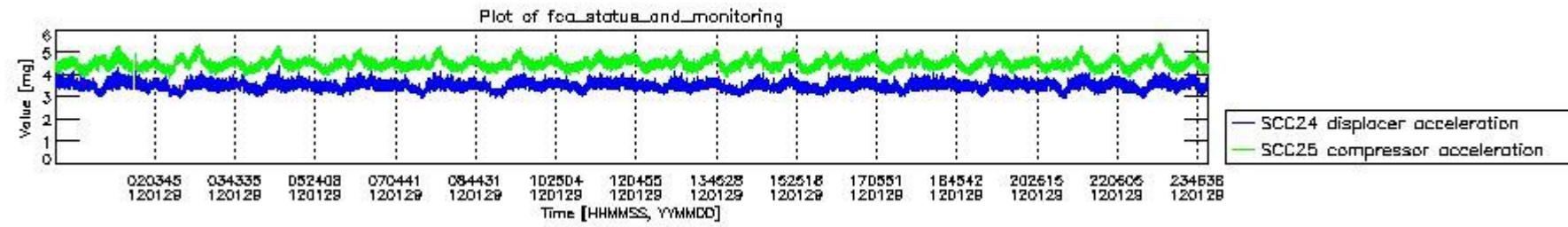
mipas_daily_report_level0_KSPT_L0_4504_N_20120129_7.PNG



mipas_daily_report_level0_KSPT_L0_4504_N_20120129_8.PNG



mipas_daily_report_level0_KSPT_L0_4504_N_20120129_9.PNG

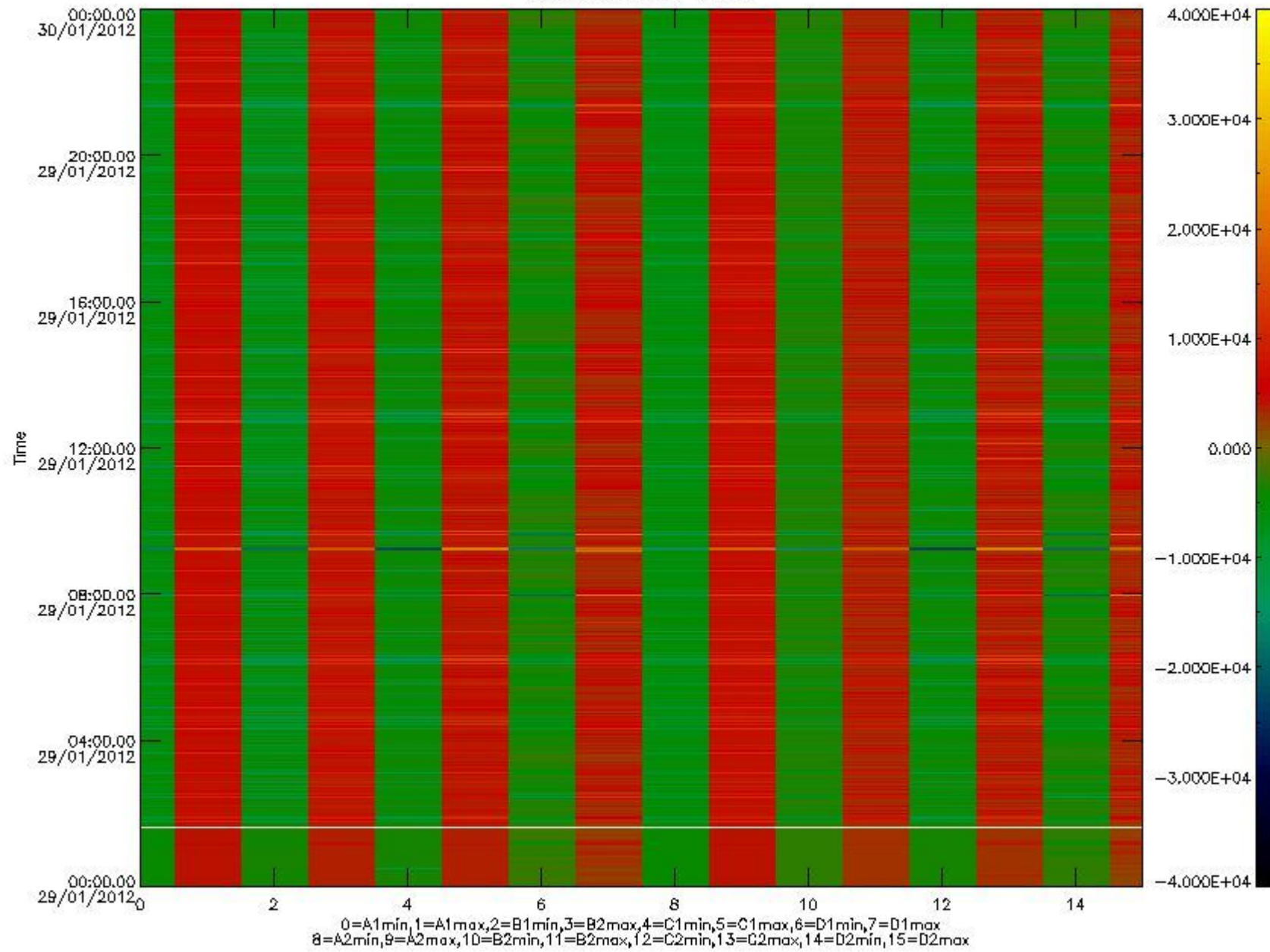


mipas_daily_report_level0_KSPT_L0_4504_N_20120129_10.PNG

The following table shows channel statistics for all channels for this day.

Channel	Min	Max	ADC
A1	-17247	18163	16bit
B1	-18891	16417	16bit
C1	-22374	22096	16bit
D1	-24588	32767	16bit
A2	-15057	18373	16bit
B2	-16605	16418	16bit
C2	-23204	24107	16bit
D2	-32768	27230	16bit

MIPNLOP_MIPSOUPAC_aux_fields_igm_cal, channel statistics plot
Colour indicates value.



mipas_daily_report_level0_KSPT_L0_4504_N_20120129_11.PNG

0.3 ADF monitoring

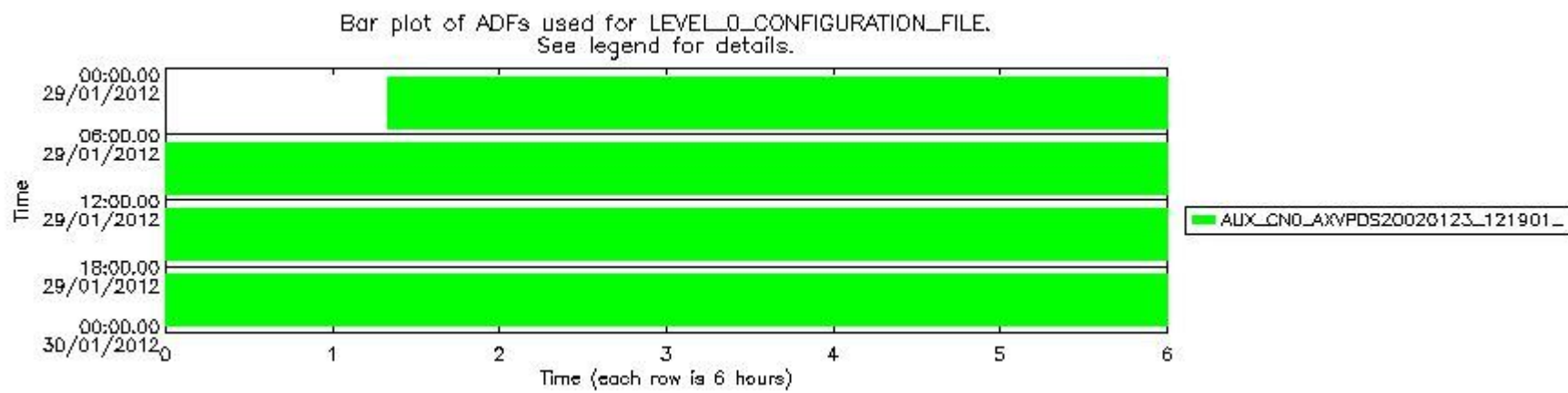
The use of ADFs is shown in two ways:

1. By means of two tables that can be used to find the ADF used for a specific product.
2. By means of plots that show changes in ADF using colours.

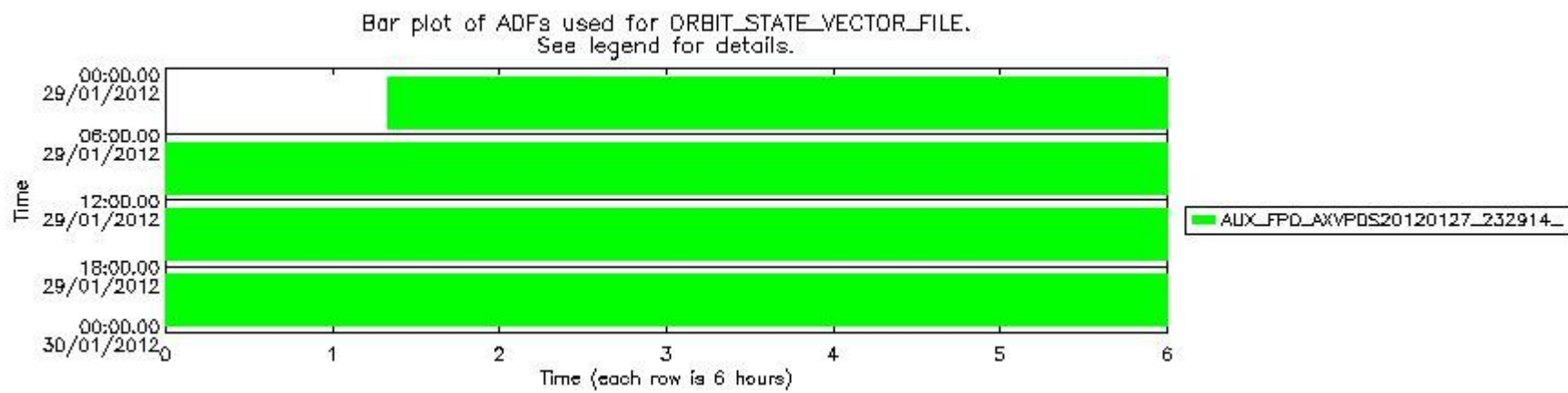
Number	ADF
0	AUX_CN0_AXVPDS20020123_121901_20020101_000000_20200101_000000
1	AUX_FPO_AXVPDS20120127_232914_20120126_182400_20120205_203739

Number	Product name	#CN0	#FPO
0	MIP_NL_0PNPDE20120129_011934_000102673111_00117_51855_5445.N1	0	1

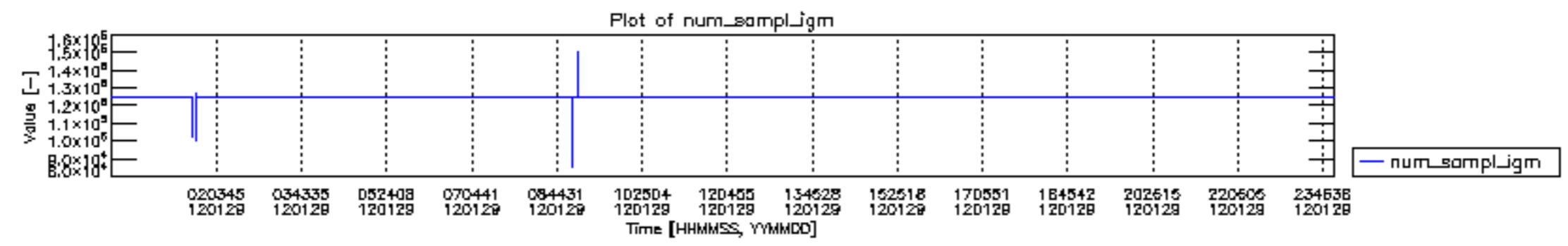
1	MIP_NL__0PNPDE20120129_013928_000013623111_00118_51856_0724.N1	0	1
2	MIP_NL__0PNPDE20120129_020213_000077083111_00118_51856_0723.N1	0	1
3	MIP_NL__0PNPDE20120129_041008_000062523111_00119_51857_5446.N1	0	1
4	MIP_NL__0PNPDE20120129_055346_000061523111_00120_51858_5447.N1	0	1
5	MIP_NL__0PNPDK20120129_073545_000038813111_00121_51859_8390.N1	0	1
6	MIP_NL__0PNPDK20120129_083928_000061393111_00122_51860_8391.N1	0	1
7	MIP_NL__0PNPDK20120129_102007_000060683111_00123_51861_8392.N1	0	1
8	MIP_NL__0PNPDK20120129_115933_000059853111_00124_51862_8393.N1	0	1
9	MIP_NL__0PNPDK20120129_133756_000058623111_00125_51863_8394.N1	0	1
10	MIP_NL__0PNPDK20120129_151454_000060103111_00126_51864_8395.N1	0	1
11	MIP_NL__0PNPDK20120129_165431_000058623111_00127_51865_8396.N1	0	1
12	MIP_NL__0PNPDK20120129_183112_000059583111_00128_51866_8397.N1	0	1
13	MIP_NL__0PNPDE20120129_200826_000043683111_00129_51867_5448.N1	0	1
14	MIP_NL__0PNPDE20120129_212014_000061733111_00129_51867_5449.N1	0	1
15	MIP_NL__0PNPDE20120129_230202_000060733111_00130_51868_5450.N1	0	1

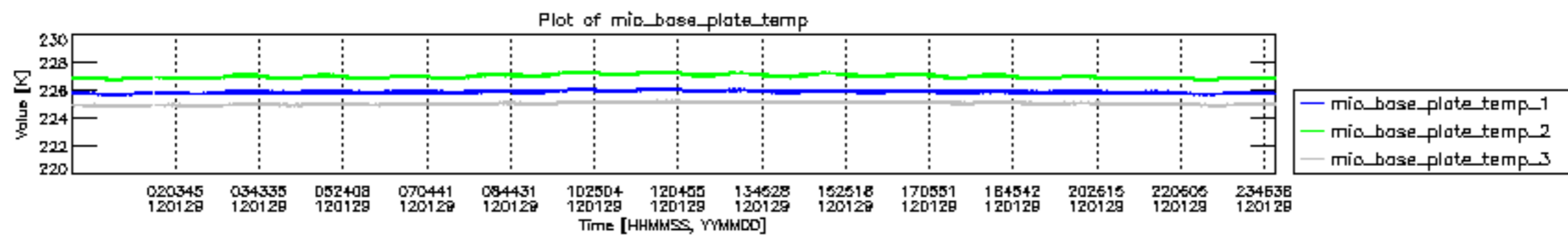


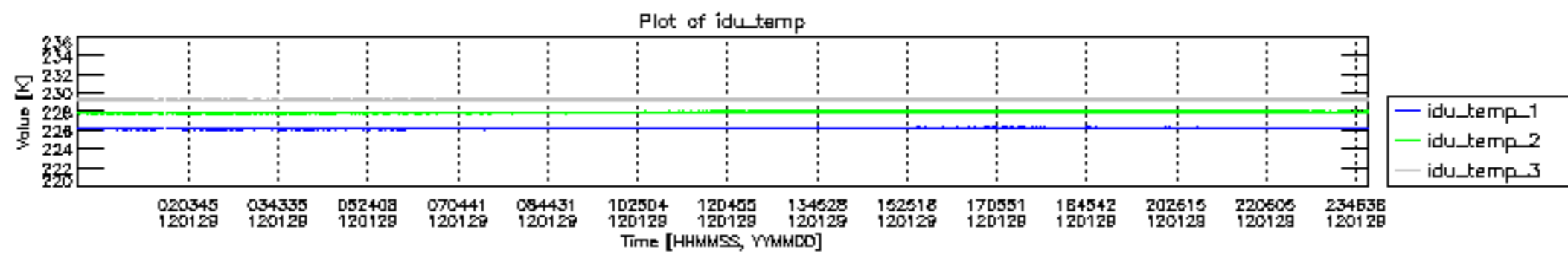
mipas_daily_report_level0_KSPT_L0_4504_N_20120129_12.PNG

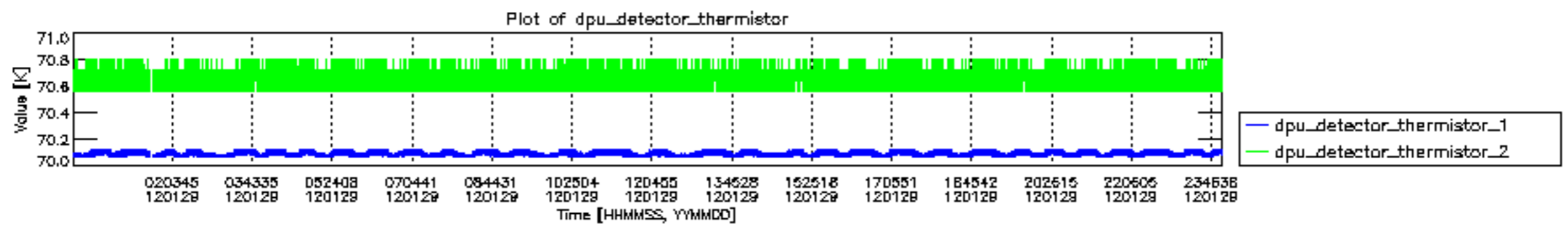


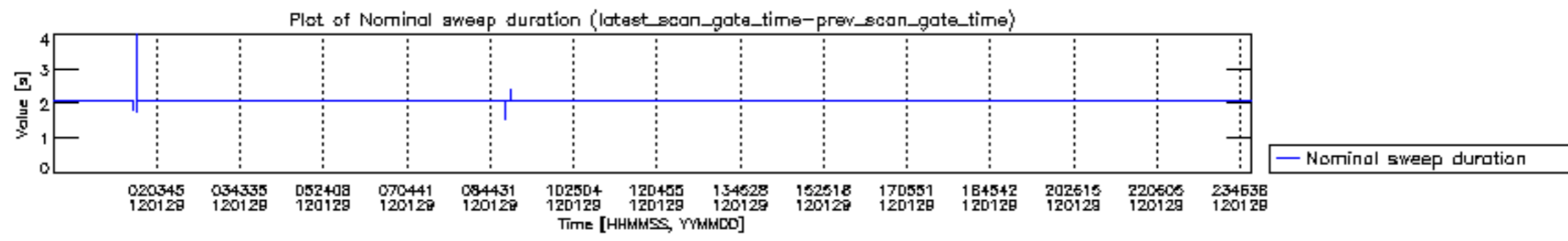
mipas_daily_report_level0_KSPT_L0_4504_N_20120129_13.PNG

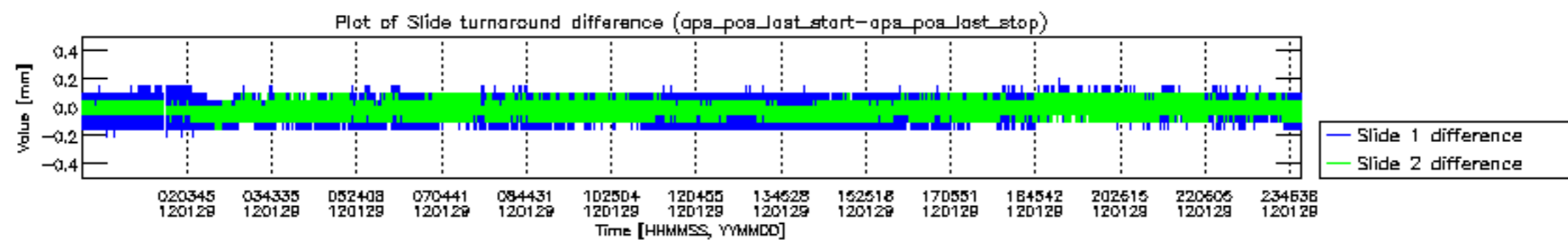


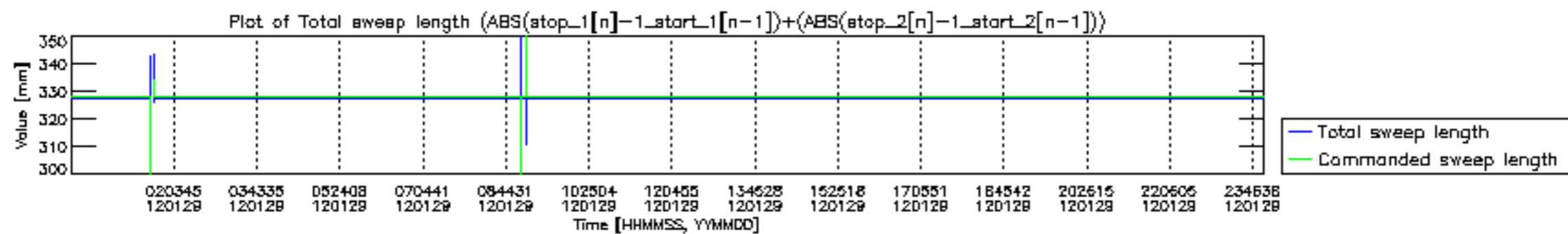


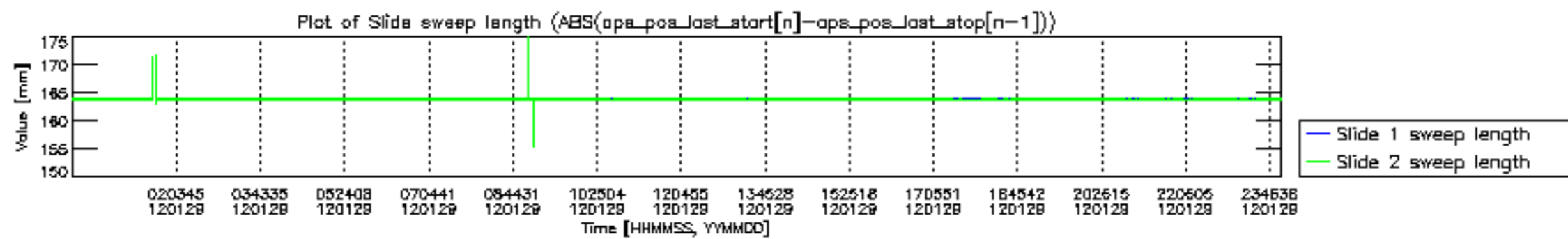


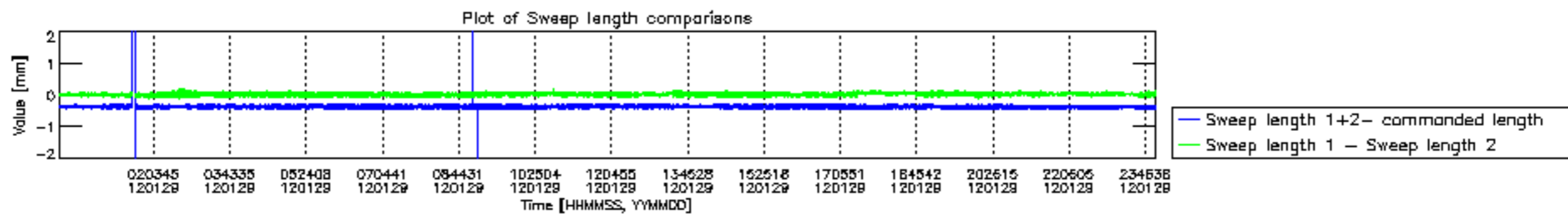


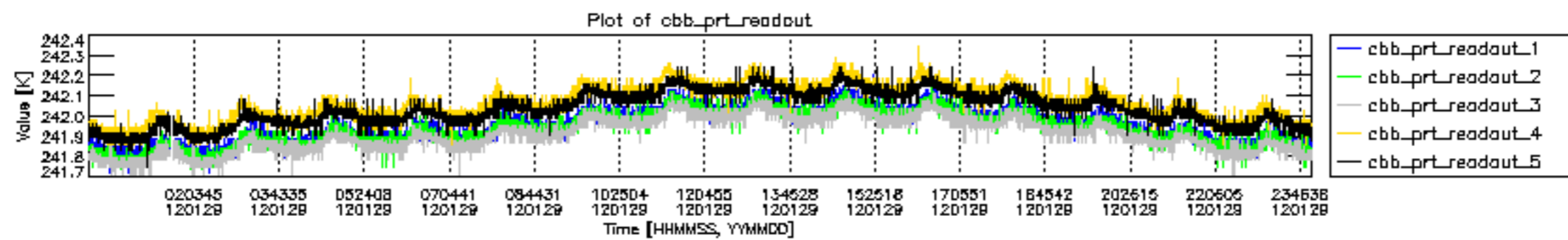


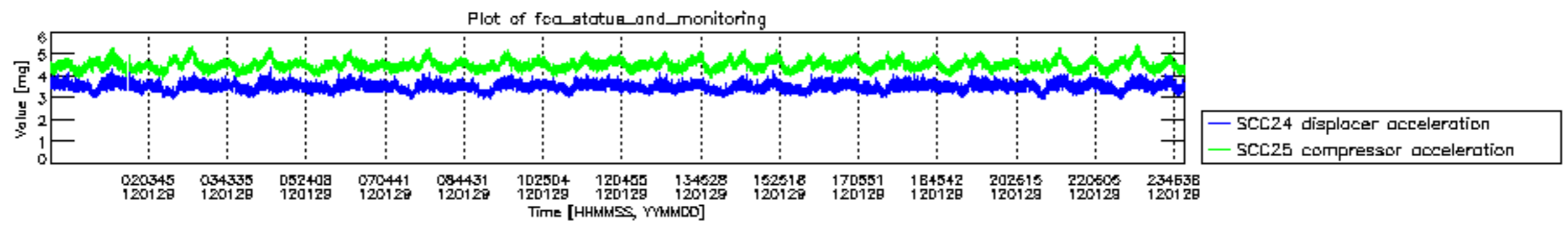












MIPNLOP_MIPSOUPAC_aux_fields_igm_cal, channel statistics plot
 Colour indicates value.

