

0. MIPAS Daily Report for level 0 products

[0.1 General Info](#)

[0.2 Instrument Operational Performance Parameters](#)

[0.3 ADF monitoring](#)

0.1 General Info

This report contains a daily analysis on parameters extracted from MIPAS level 0 data (The MIP_NL__0P product).

0.1.1 Report summary

The table below shows general characteristics of the data that are included into this report.

Item	Value
Report version	v1.6 08-11-2010
Time of report generation	02FEB2012 05:23:53
Data source version	KSPT_L0/4504-N
Processing scope for products	28JAN2012 00:00:00 to 29JAN2012 00:00:00
Start time of first product within scope	28JAN2012 00:16:55
Stop time of last product within scope	29JAN2012 01:20:45
Total number of level 0 products	16
Number of level 0 products with errors	0

0.1.2 Product Quality Indicators per product

The following table shows a summary for each product used in this report.

#	Product name	Start time	Stop time	Prod err	ISP err sign	ISP miss sign	ISP disc sign	rs sign
0	MIP_NL__0PNPDE20120128_001655_000058263111_00102_51840_5436.N1	28JAN2012 00:16:55	28JAN2012 01:54:01	0	0	0	0	0
1	MIP_NL__0PNPDE20120128_015301_000044713111_00103_51841_5437.N1	28JAN2012 01:53:01	28JAN2012 03:07:31	0	0	0	0	0
2	MIP_NL__0PNPDE20120128_030658_000061903111_00104_51842_5438.N1	28JAN2012 03:06:58	28JAN2012 04:50:07	0	0	0	0	0
3	MIP_NL__0PNPDE20120128_044934_000060123111_00105_51843_5439.N1	28JAN2012 04:49:34	28JAN2012 06:29:46	0	0	0	0	0
4	MIP_NL__0PNPDK20120128_062913_000041243111_00106_51844_8381.N1	28JAN2012 06:29:13	28JAN2012 07:37:57	0	0	0	0	0
5	MIP_NL__0PNPDK20120128_073656_000060923111_00107_51845_8382.N1	28JAN2012 07:36:56	28JAN2012 09:18:28	0	0	0	0	0
6	MIP_NL__0PNPDK20120128_091645_000061263111_00108_51846_8383.N1	28JAN2012 09:16:45	28JAN2012 10:58:51	0	0	0	0	0
7	MIP_NL__0PNPDK20120128_105713_000059663111_00109_51847_8384.N1	28JAN2012 10:57:13	28JAN2012 12:36:39	0	0	0	0	0
8	MIP_NL__0PNPDK20120128_123455_000060293111_00110_51848_8385.N1	28JAN2012 12:34:55	28JAN2012 14:15:24	0	0	0	0	0
9	MIP_NL__0PNPDK20120128_141423_000058763111_00111_51849_8386.N1	28JAN2012 14:14:23	28JAN2012 15:52:20	0	0	0	0	0
10	MIP_NL__0PNPDK20120128_155146_000058703111_00112_51850_8387.N1	28JAN2012 15:51:46	28JAN2012 17:29:36	0	0	0	0	0
11	MIP_NL__0PNPDK20120128_172834_000058373111_00113_51851_8388.N1	28JAN2012 17:28:34	28JAN2012 19:05:50	0	0	0	0	0
12	MIP_NL__0PNPDK20120128_190441_000061293111_00114_51852_8389.N1	28JAN2012 19:04:41	28JAN2012 20:46:51	0	0	0	0	0
13	MIP_NL__0PNPDE20120128_204454_000044393111_00115_51853_5440.N1	28JAN2012 20:44:54	28JAN2012 21:58:53	0	0	0	0	0
14	MIP_NL__0PNPDE20120128_215744_000061483111_00115_51853_5441.N1	28JAN2012 21:57:44	28JAN2012 23:40:12	0	0	0	0	0
15	MIP_NL__0PNPDE20120128_233901_000061043111_00116_51854_5444.N1	28JAN2012 23:39:01	29JAN2012 01:20:45	0	0	0	0	0

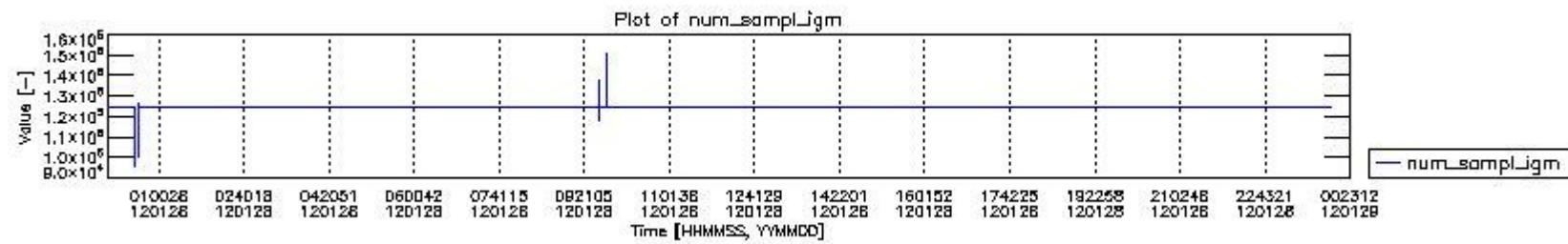
0.2 Instrument Operational Performance Parameters

The following plots give an overview of various instrument parameters for this day. The instrument parameters are part of the auxiliary data field within the source packets of the MIP_NL__0P product. The auxiliary data is normally included twice per interferogram. Note that only the first packet is currently included in monitoring.

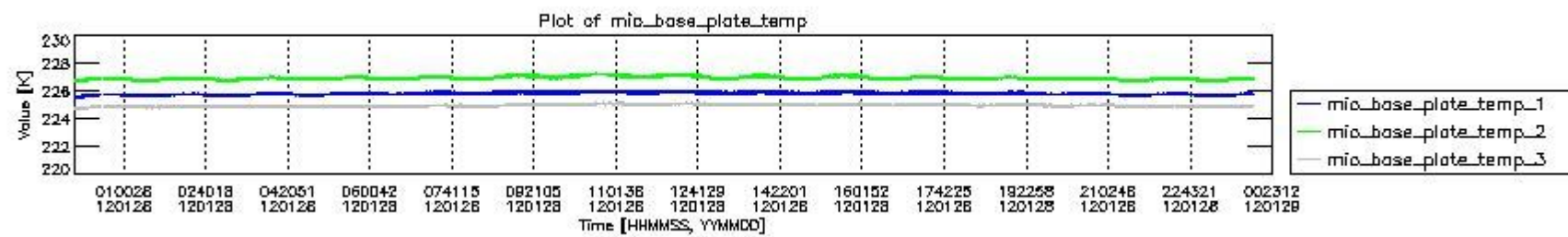
The following table shows the counts of various interferogram number of samples

Number of igm samples	Count [#]	Count [%]
95976	1	0.0024058703
100322	1	0.0024058703

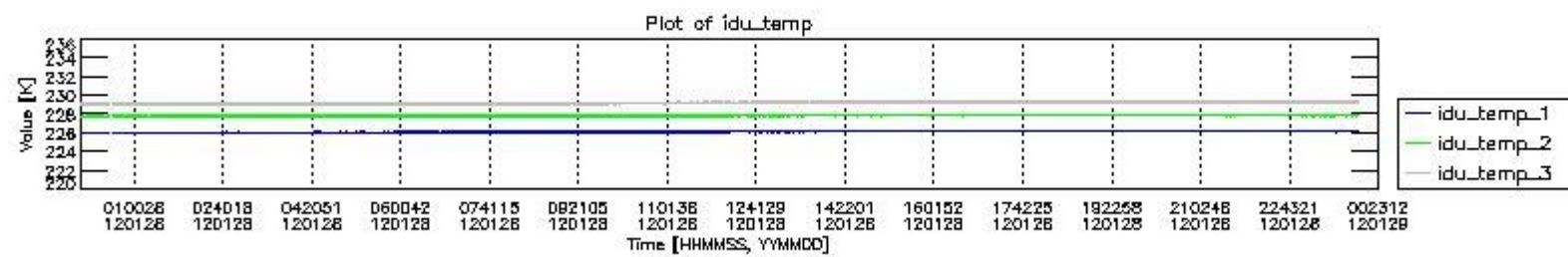
100557	1	0.0024058703
117792	1	0.0024058703
120454	1	0.0024058703
124800	39176	94.252376
124803	2377	5.7187538
125809	1	0.0024058703
126818	1	0.0024058703
127456	1	0.0024058703
130916	1	0.0024058703
137924	1	0.0024058703
147588	1	0.0024058703
150244	1	0.0024058703



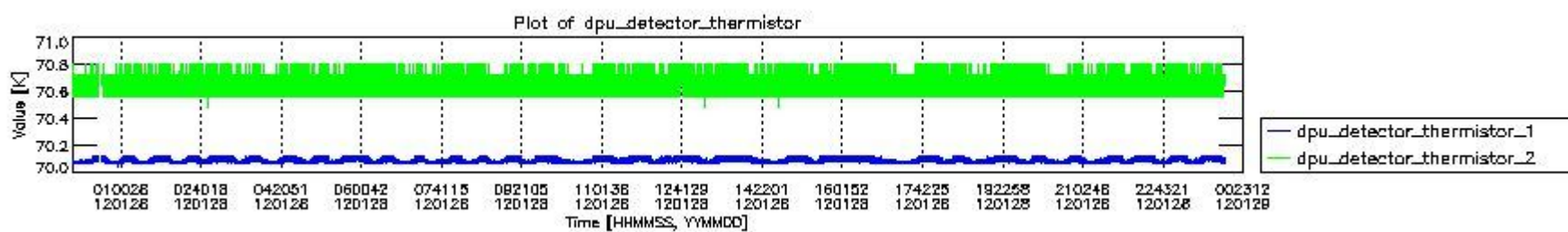
mipas_daily_report_level0_KSPT_L0_4504_N_20120128_0.PNG



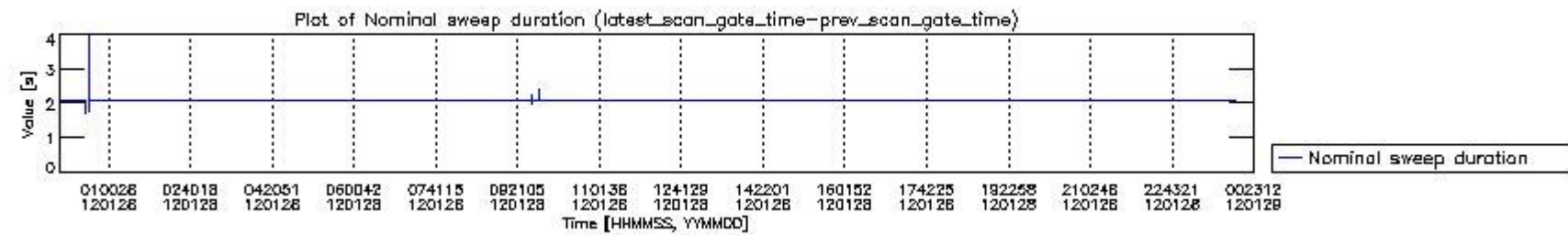
mipas_daily_report_level0_KSPT_L0_4504_N_20120128_1.PNG



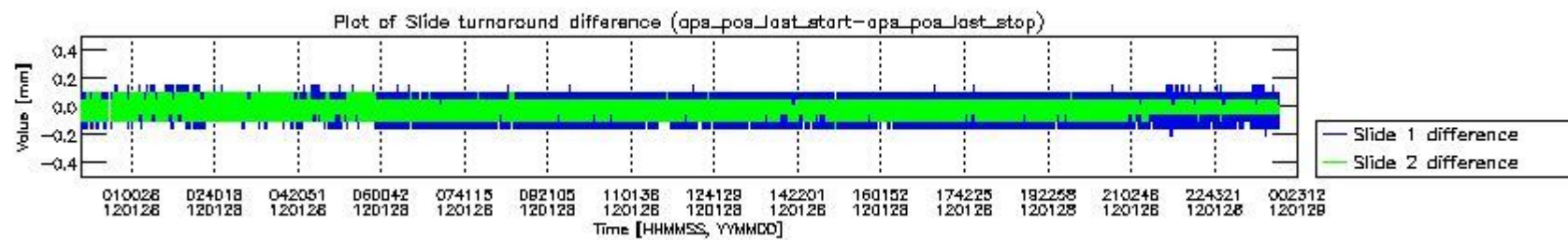
mipas_daily_report_level0_KSPT_L0_4504_N_20120128_2.PNG



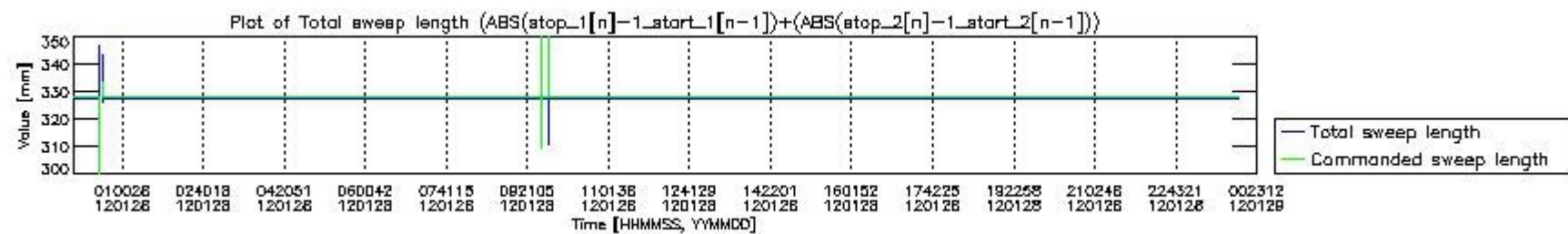
mipas_daily_report_level0_KSPT_L0_4504_N_20120128_3.PNG



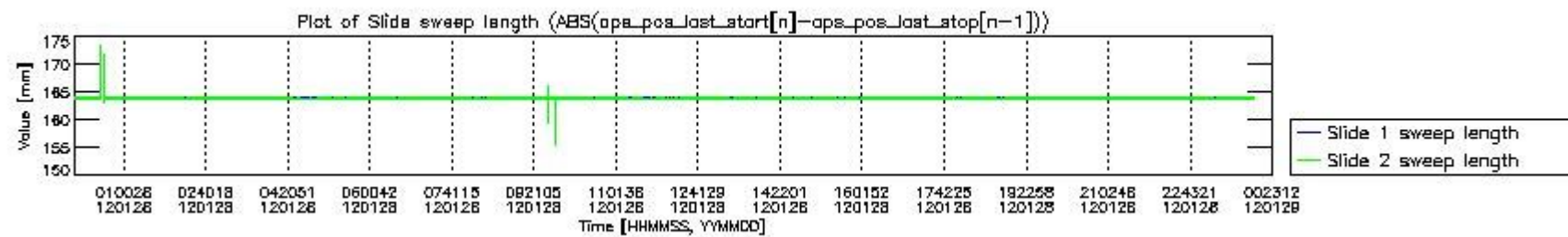
mipas_daily_report_level0_KSPT_L0_4504_N_20120128_4.PNG



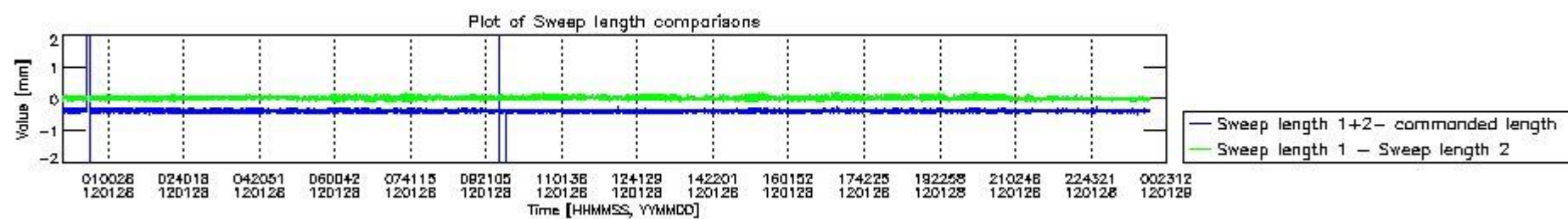
mipas_daily_report_level0_KSPT_L0_4504_N_20120128_5.PNG



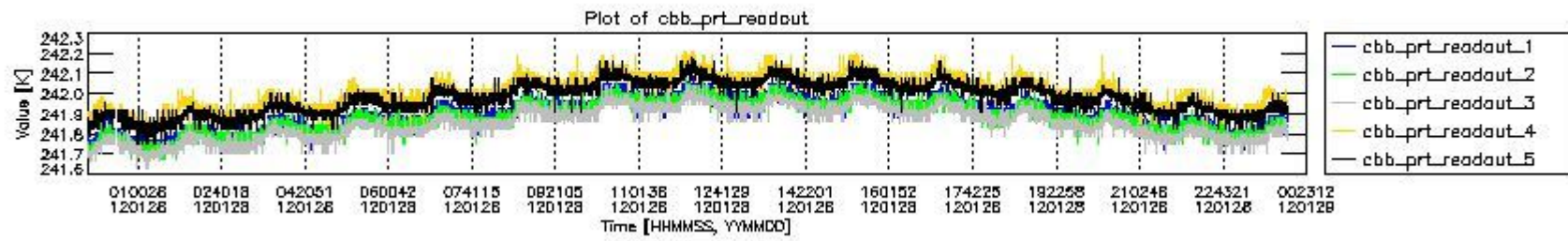
mipas_daily_report_level0_KSPT_L0_4504_N_20120128_6.PNG



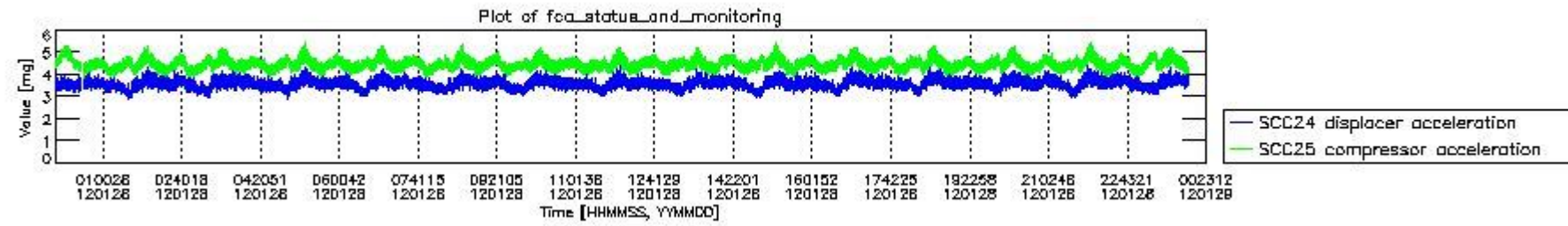
mipas_daily_report_level0_KSPT_L0_4504_N_20120128_7.PNG



mipas_daily_report_level0_KSPT_L0_4504_N_20120128_8.PNG



mipas_daily_report_level0_KSPT_L0_4504_N_20120128_9.PNG

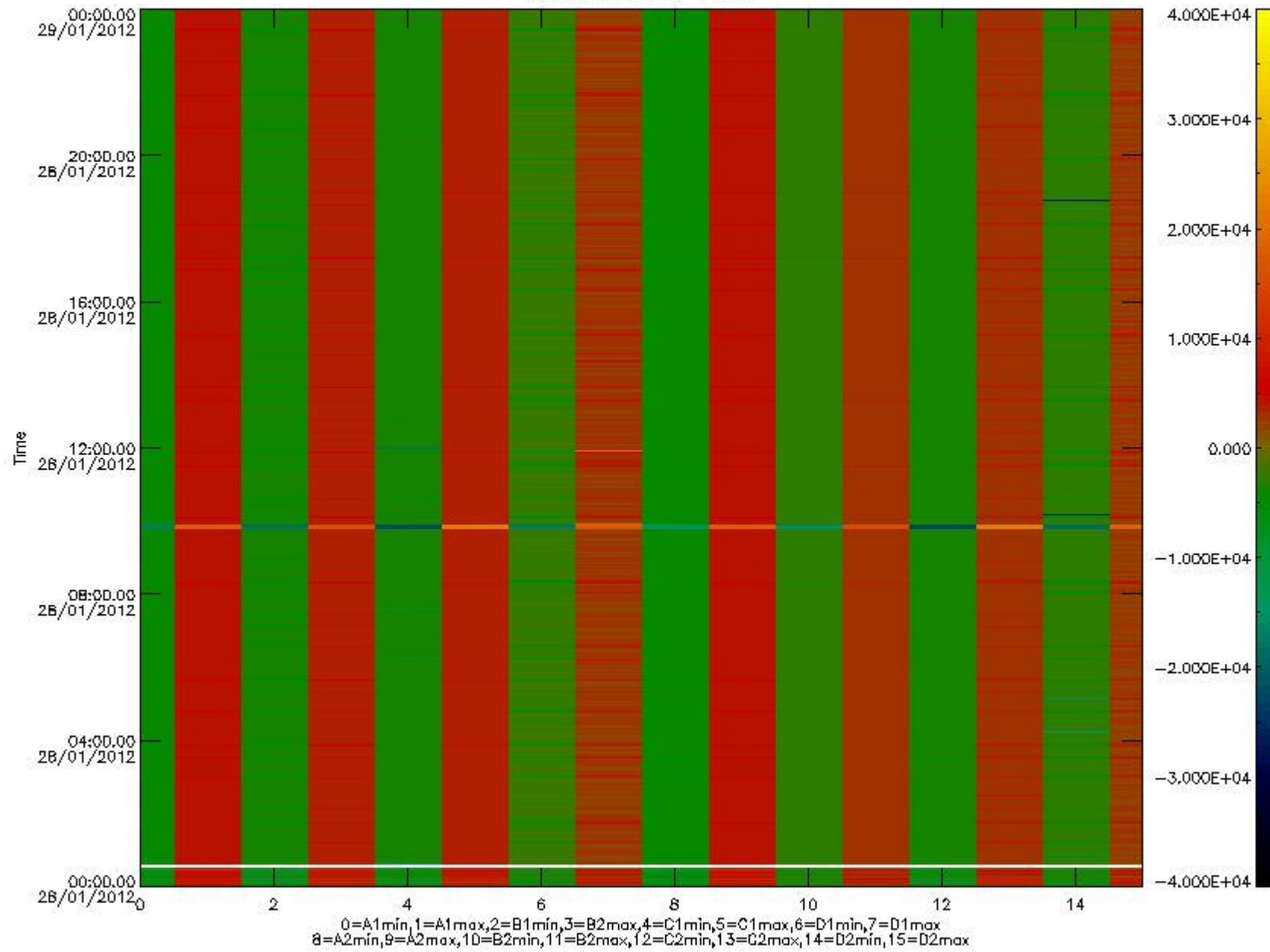


mipas_daily_report_level0_KSPT_L0_4504_N_20120128_10.PNG

The following table shows channel statistics for all channels for this day.

Channel	Min	Max	ADC
A1	-17251	18157	16bit
B1	-18885	16432	16bit
C1	-22382	22058	16bit
D1	-19999	30444	16bit
A2	-15057	18392	16bit
B2	-16604	16410	16bit
C2	-23220	24363	16bit
D2	-32768	24916	16bit

MIPNL0P_MIPSOUPAC_aux_fields_igm_cal, channel statistics plot
Colour indicates value.



mipas_daily_report_level0_KSPT_L0_4504_N_20120128_11.PNG

0.3 ADF monitoring

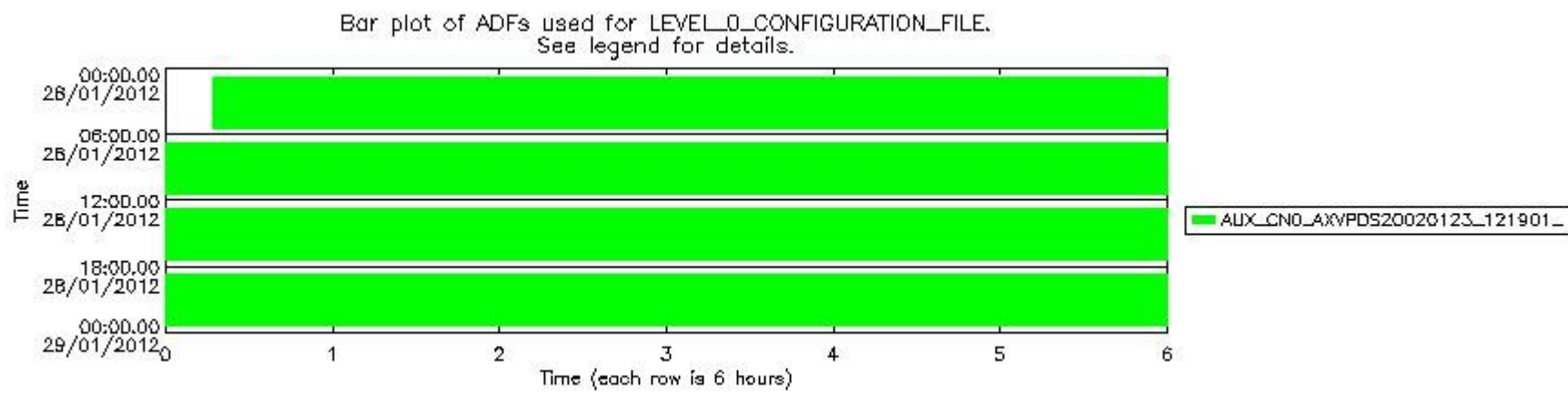
The use of ADFs is shown in two ways:

1. By means of two tables that can be used to find the ADF used for a specific product.
2. By means of plots that show changes in ADF using colours.

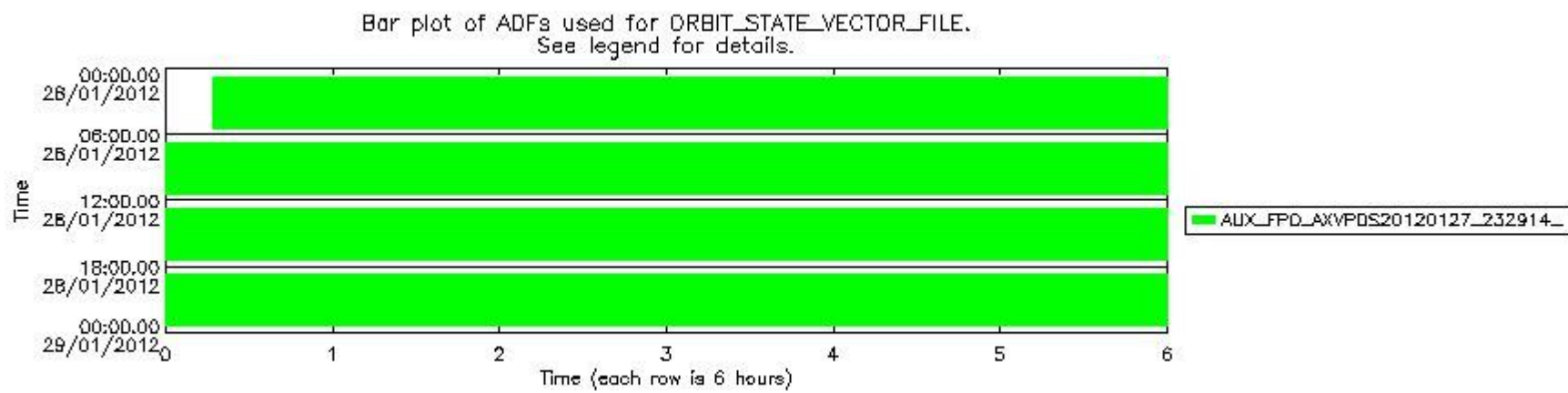
Number	ADF
0	AUX_CN0_AXVPDS20020123_121901_20020101_000000_20200101_000000
1	AUX_FPO_AXVPDS20120127_232914_20120126_182400_20120205_203739

Number	Product name	#CN0	#FPO
0	MIP_NL_0PNPDE20120128_001655_000058263111_00102_51840_5436.N1	0	1

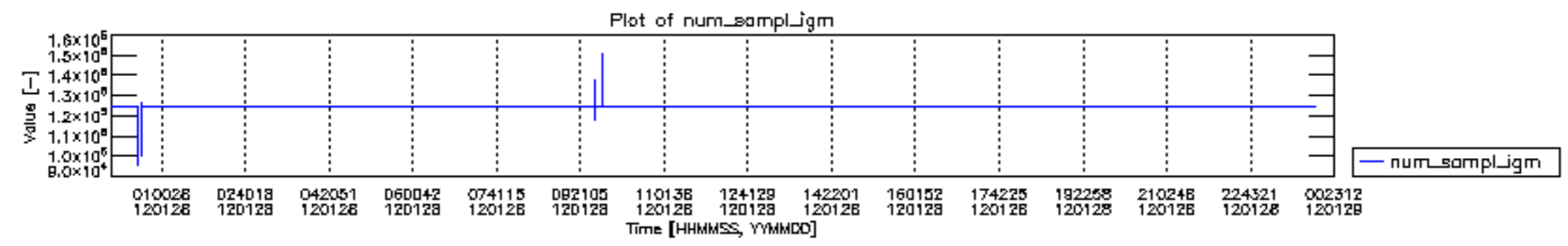
1	MIP_NL__0PNPDE20120128_015301_000044713111_00103_51841_5437.N1	0	1
2	MIP_NL__0PNPDE20120128_030658_000061903111_00104_51842_5438.N1	0	1
3	MIP_NL__0PNPDE20120128_044934_000060123111_00105_51843_5439.N1	0	1
4	MIP_NL__0PNPDK20120128_062913_000041243111_00106_51844_8381.N1	0	1
5	MIP_NL__0PNPDK20120128_073656_000060923111_00107_51845_8382.N1	0	1
6	MIP_NL__0PNPDK20120128_091645_000061263111_00108_51846_8383.N1	0	1
7	MIP_NL__0PNPDK20120128_105713_000059663111_00109_51847_8384.N1	0	1
8	MIP_NL__0PNPDK20120128_123455_000060293111_00110_51848_8385.N1	0	1
9	MIP_NL__0PNPDK20120128_141423_000058763111_00111_51849_8386.N1	0	1
10	MIP_NL__0PNPDK20120128_155146_000058703111_00112_51850_8387.N1	0	1
11	MIP_NL__0PNPDK20120128_172834_000058373111_00113_51851_8388.N1	0	1
12	MIP_NL__0PNPDK20120128_190441_000061293111_00114_51852_8389.N1	0	1
13	MIP_NL__0PNPDE20120128_204454_000044393111_00115_51853_5440.N1	0	1
14	MIP_NL__0PNPDE20120128_215744_000061483111_00115_51853_5441.N1	0	1
15	MIP_NL__0PNPDE20120128_233901_000061043111_00116_51854_5444.N1	0	1

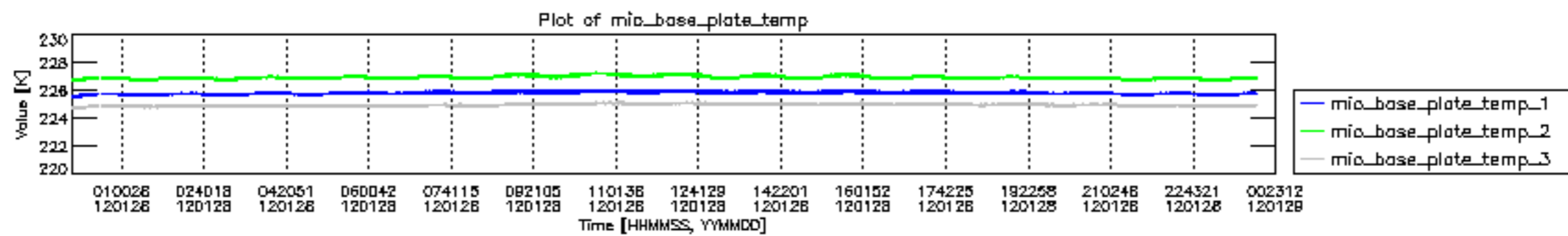


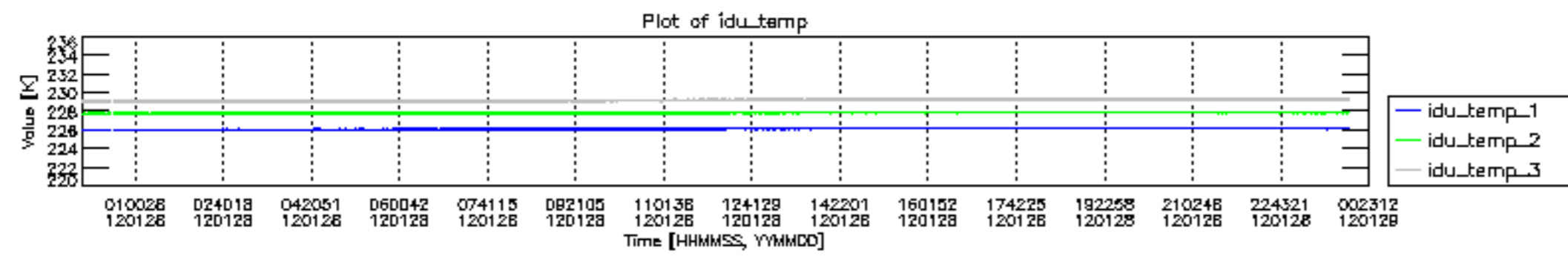
mipas_daily_report_level0_KSPT_L0_4504_N_20120128_12.PNG

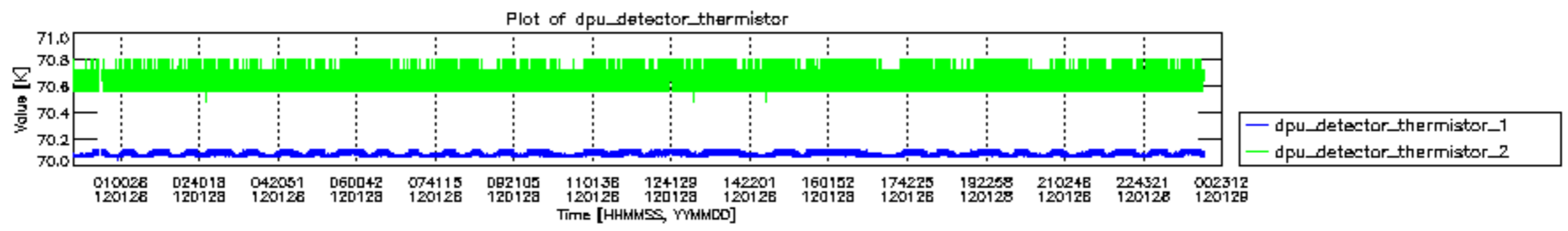


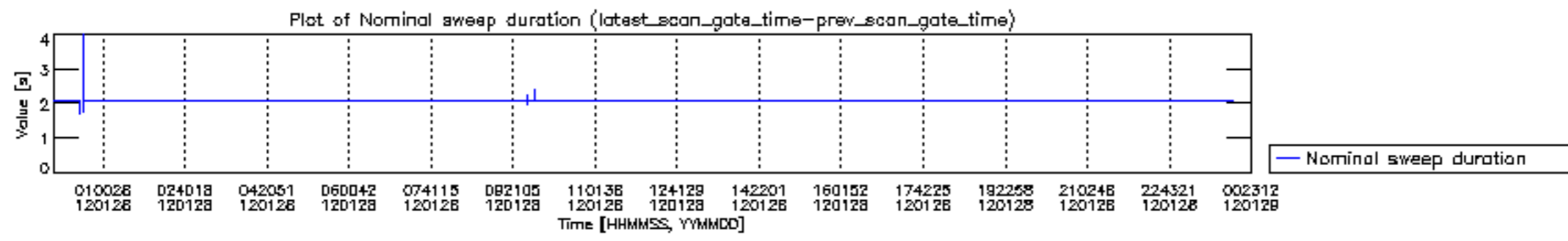
mipas_daily_report_level0_KSPT_L0_4504_N_20120128_13.PNG

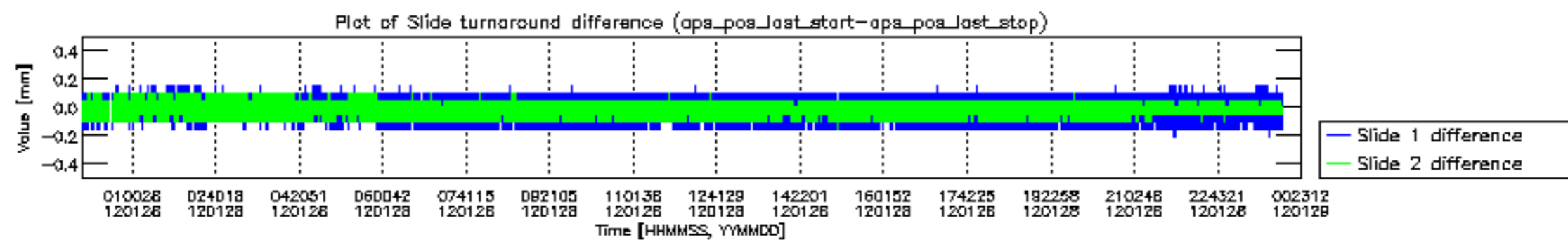


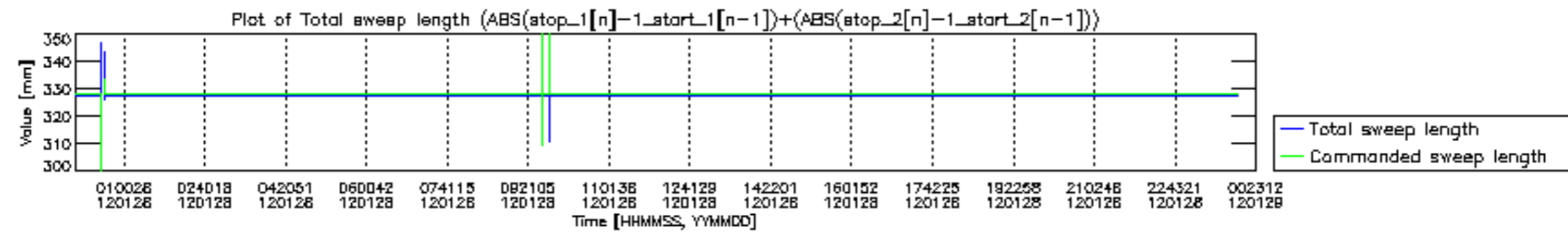


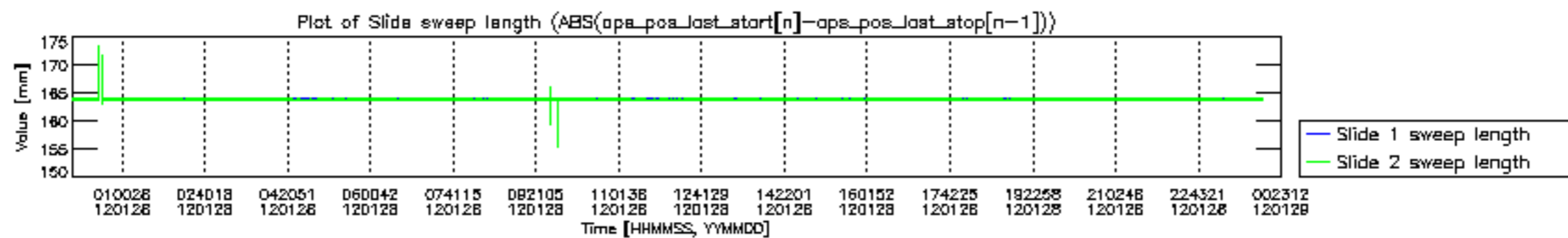


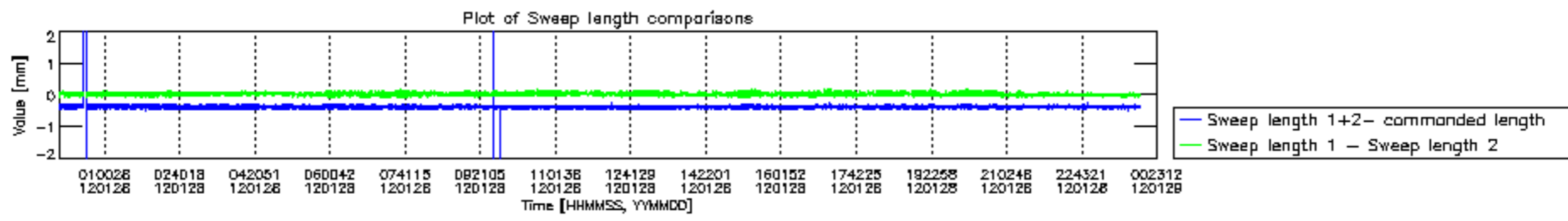


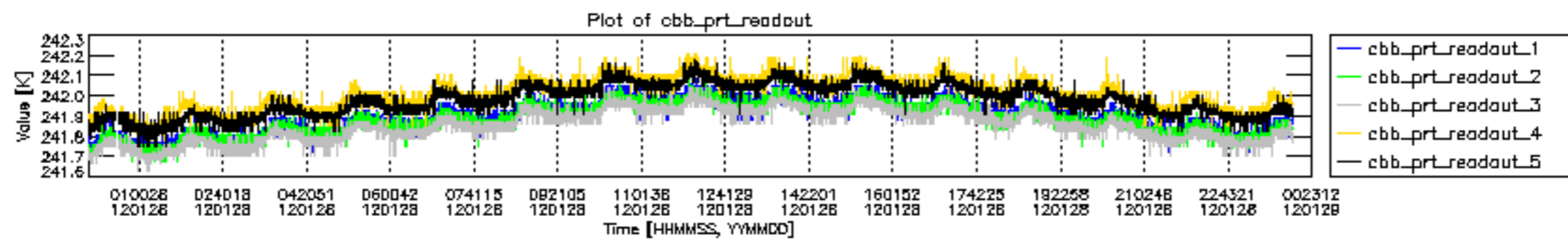


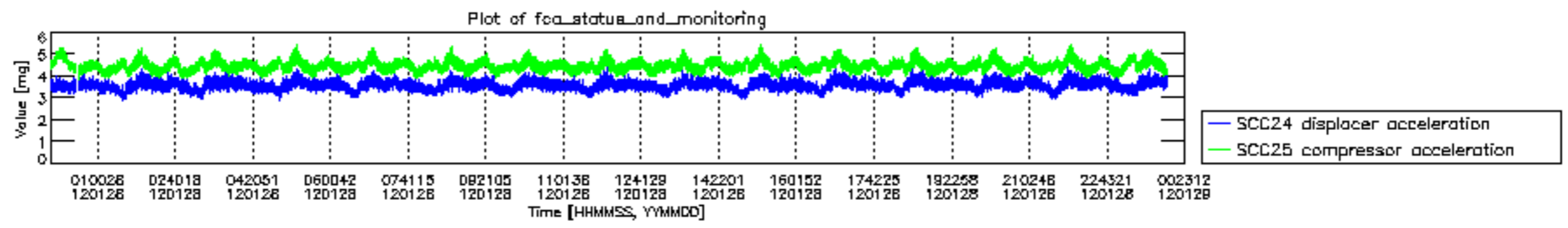












MIPNLOP_MIPSOUPAC_aux_fields_igm_cal, channel statistics plot
 Colour indicates value.

