

0. MIPAS Daily Report for level 0 products

[0.1 General Info](#)

[0.2 Instrument Operational Performance Parameters](#)

[0.3 ADF monitoring](#)

0.1 General Info

This report contains a daily analysis on parameters extracted from MIPAS level 0 data (The MIP_NL__0P product).

0.1.1 Report summary

The table below shows general characteristics of the data that are included into this report.

Item	Value
Report version	v1.6 08-11-2010
Time of report generation	17JAN2012 05:24:35
Data source version	KSPT_L0/4504-N
Processing scope for products	12JAN2012 00:00:00 to 13JAN2012 00:00:00
Start time of first product within scope	12JAN2012 00:04:03
Stop time of last product within scope	13JAN2012 01:08:25
Total number of level 0 products	16
Number of level 0 products with errors	0

0.1.2 Product Quality Indicators per product

The following table shows a summary for each product used in this report.

#	Product name	Start time	Stop time	Prod err	ISP err sign	ISP miss sign	ISP disc sign	rs sign
0	MIP_NL__0PNPDE20120112_000403_000059293110_00303_51610_5330.N1	12JAN2012 00:04:03	12JAN2012 01:42:51	0	0	0	0	0
1	MIP_NL__0PNPDE20120112_014153_000043353110_00304_51611_5331.N1	12JAN2012 01:41:53	12JAN2012 02:54:07	0	0	0	0	0
2	MIP_NL__0PNPDE20120112_025334_000061733110_00305_51612_5332.N1	12JAN2012 02:53:34	12JAN2012 04:36:27	0	0	0	0	0
3	MIP_NL__0PNPDE20120112_043554_000060333110_00306_51613_5333.N1	12JAN2012 04:35:54	12JAN2012 06:16:27	0	0	0	0	0
4	MIP_NL__0PNPDK20120112_061553_000041633110_00307_51614_8244.N1	12JAN2012 06:15:53	12JAN2012 07:25:16	0	0	0	0	0
5	MIP_NL__0PNPDK20120112_072412_000061503110_00308_51615_8245.N1	12JAN2012 07:24:12	12JAN2012 09:06:42	0	0	0	0	0
6	MIP_NL__0PNPDK20120112_090506_000058463110_00309_51616_8246.N1	12JAN2012 09:05:06	12JAN2012 10:42:31	0	0	0	0	0
7	MIP_NL__0PNPDK20120112_104131_000060773110_00310_51617_8247.N1	12JAN2012 10:41:31	12JAN2012 12:22:48	0	0	0	0	0
8	MIP_NL__0PNPDK20120112_122107_000061083110_00311_51618_8248.N1	12JAN2012 12:21:07	12JAN2012 14:02:56	0	0	0	0	0
9	MIP_NL__0PNPDK20120112_140155_000059333110_00312_51619_8249.N1	12JAN2012 14:01:55	12JAN2012 15:40:48	0	0	0	0	0
10	MIP_NL__0PNPDK20120112_153947_000058583110_00313_51620_8250.N1	12JAN2012 15:39:47	12JAN2012 17:17:25	0	0	0	0	0
11	MIP_NL__0PNPDK20120112_171614_000058873110_00314_51621_8251.N1	12JAN2012 17:16:14	12JAN2012 18:54:21	0	0	0	0	0
12	MIP_NL__0PNPDK20120112_185314_000060393110_00315_51622_8252.N1	12JAN2012 18:53:14	12JAN2012 20:33:53	0	0	0	0	0
13	MIP_NL__0PNPDE20120112_203150_000044183110_00316_51623_5334.N1	12JAN2012 20:31:50	12JAN2012 21:45:28	0	0	0	0	0
14	MIP_NL__0PNPDE20120112_214432_000061443110_00316_51623_5335.N1	12JAN2012 21:44:32	12JAN2012 23:26:55	0	0	0	0	0
15	MIP_NL__0PNPDE20120112_232548_000061563110_00317_51624_5336.N1	12JAN2012 23:25:48	13JAN2012 01:08:25	0	0	0	0	0

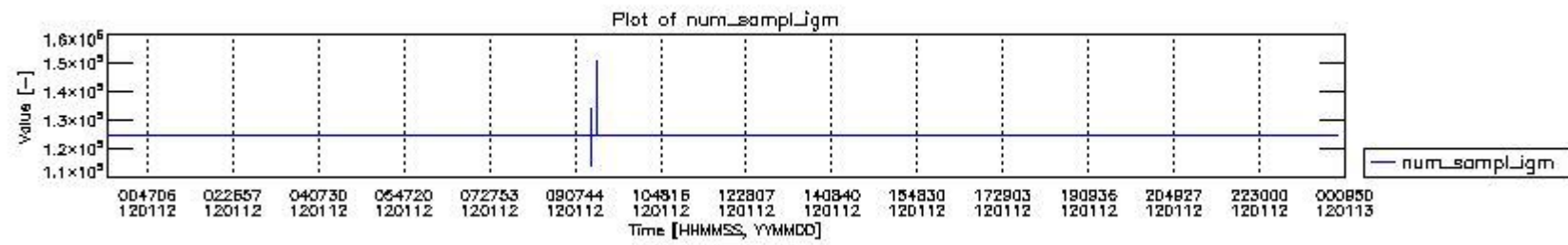
0.2 Instrument Operational Performance Parameters

The following plots give an overview of various instrument parameters for this day. The instrument parameters are part of the auxiliary data field within the source packets of the MIP_NL__0P product. The auxiliary data is normally included twice per interferogram. Note that only the first packet is currently included in monitoring.

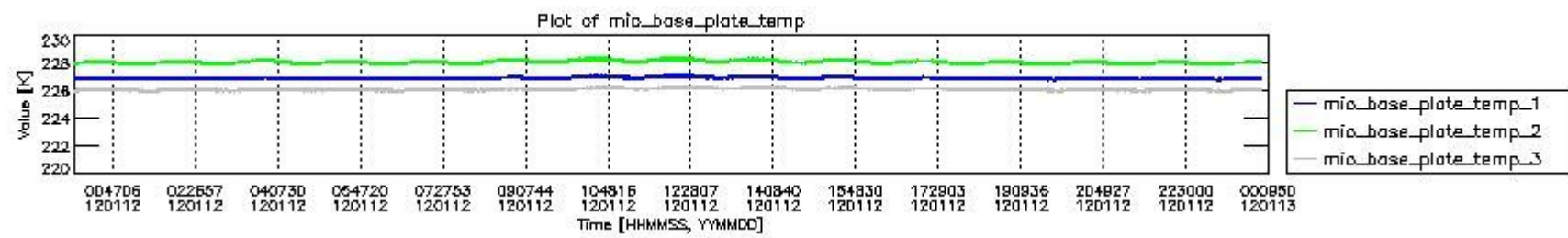
The following table shows the counts of various interferogram number of samples

Number of igm samples	Count [#]	Count [%]
113926	1	0.0024003264
123184	1	0.0024003264

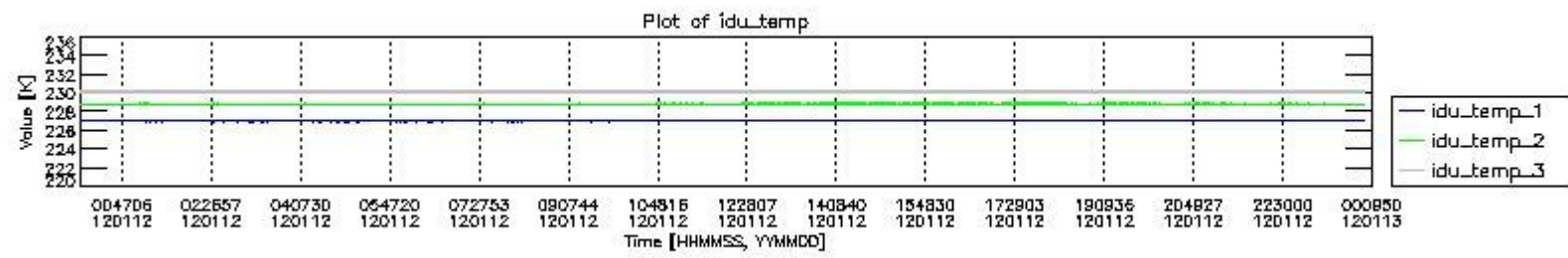
124800	38699	92.890233
124803	2956	7.0953650
127605	1	0.0024003264
134058	1	0.0024003264
147737	1	0.0024003264
150542	1	0.0024003264



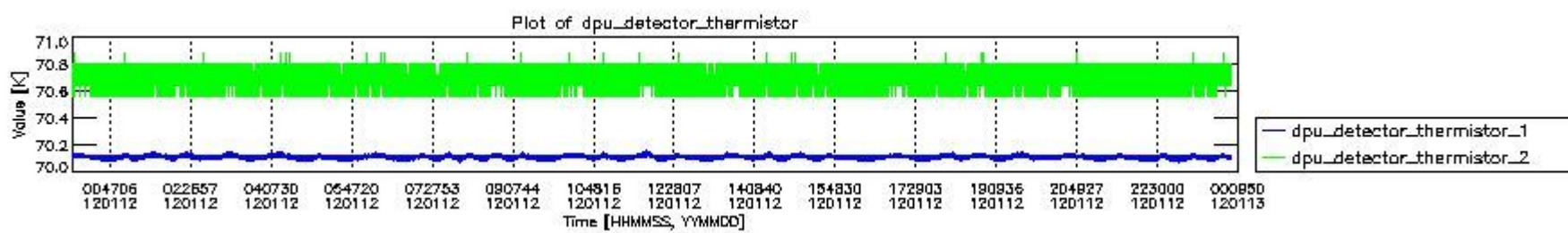
mipas_daily_report_level0_KSPT_L0_4504_N_20120112_0.PNG



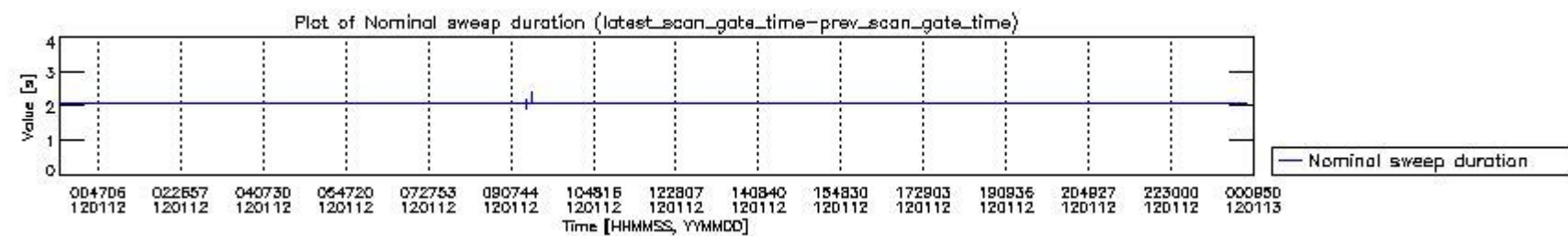
mipas_daily_report_level0_KSPT_L0_4504_N_20120112_1.PNG



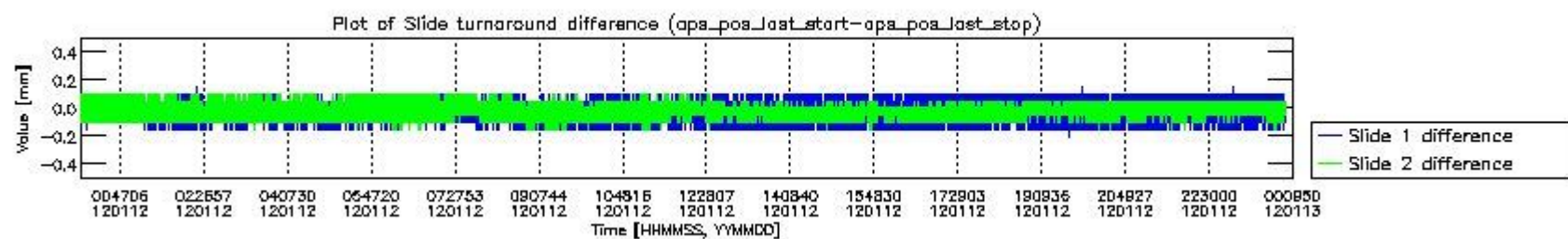
mipas_daily_report_level0_KSPT_L0_4504_N_20120112_2.PNG



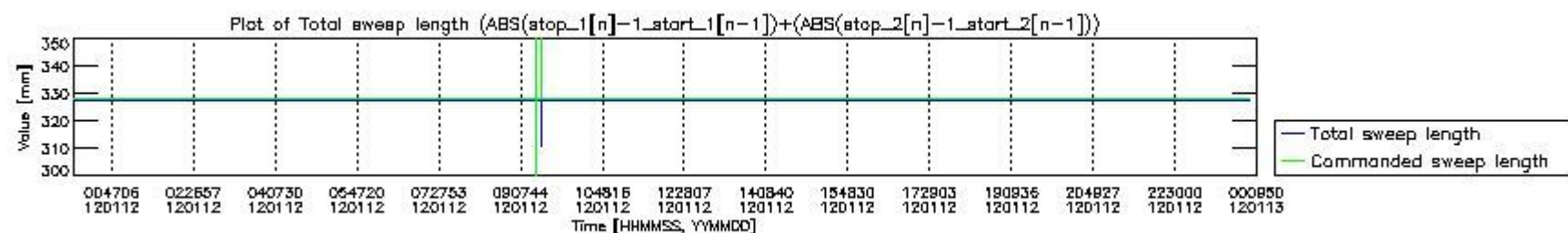
mipas_daily_report_level0_KSPT_L0_4504_N_20120112_3.PNG



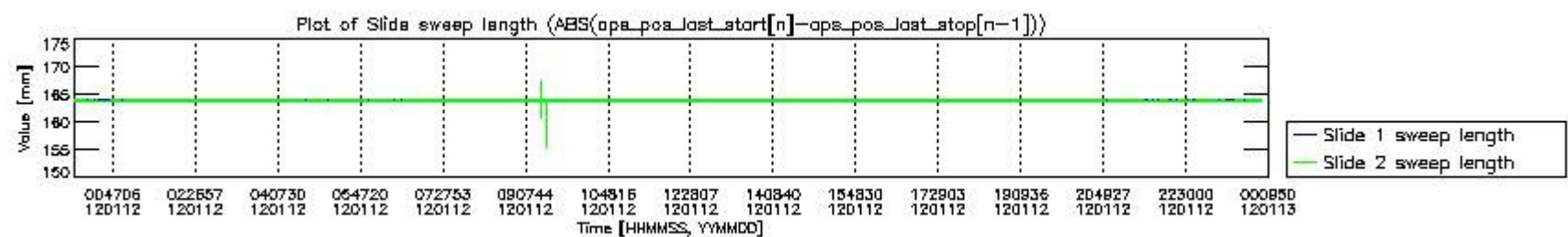
mipas_daily_report_level0_KSPT_L0_4504_N_20120112_4.PNG



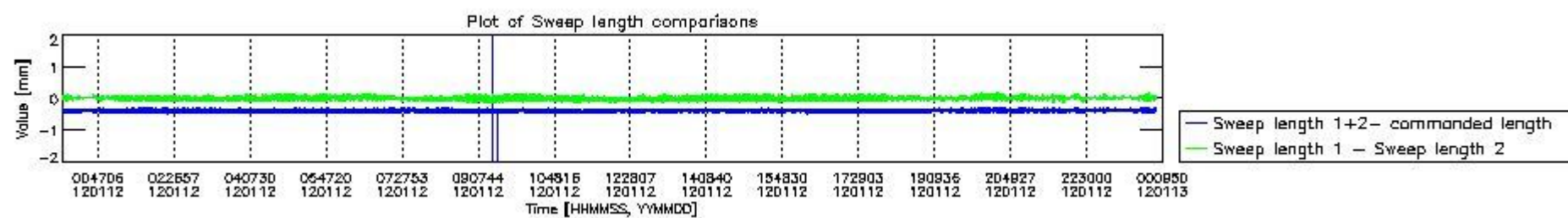
mipas_daily_report_level0_KSPT_L0_4504_N_20120112_5.PNG



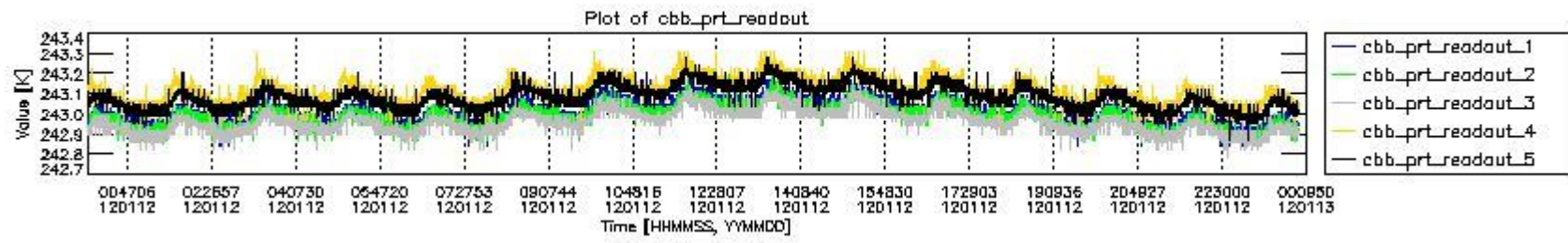
mipas_daily_report_level0_KSPT_L0_4504_N_20120112_6.PNG



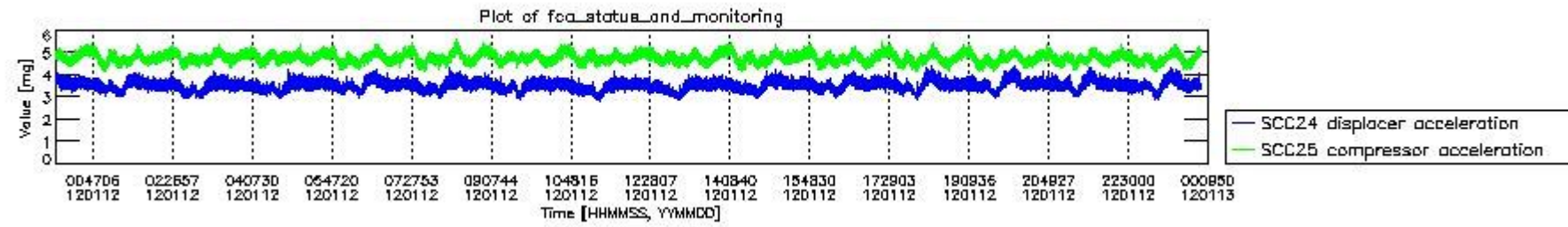
mipas_daily_report_level0_KSPT_L0_4504_N_20120112_7.PNG



mipas_daily_report_level0_KSPT_L0_4504_N_20120112_8.PNG



mipas_daily_report_level0_KSPT_L0_4504_N_20120112_9.PNG

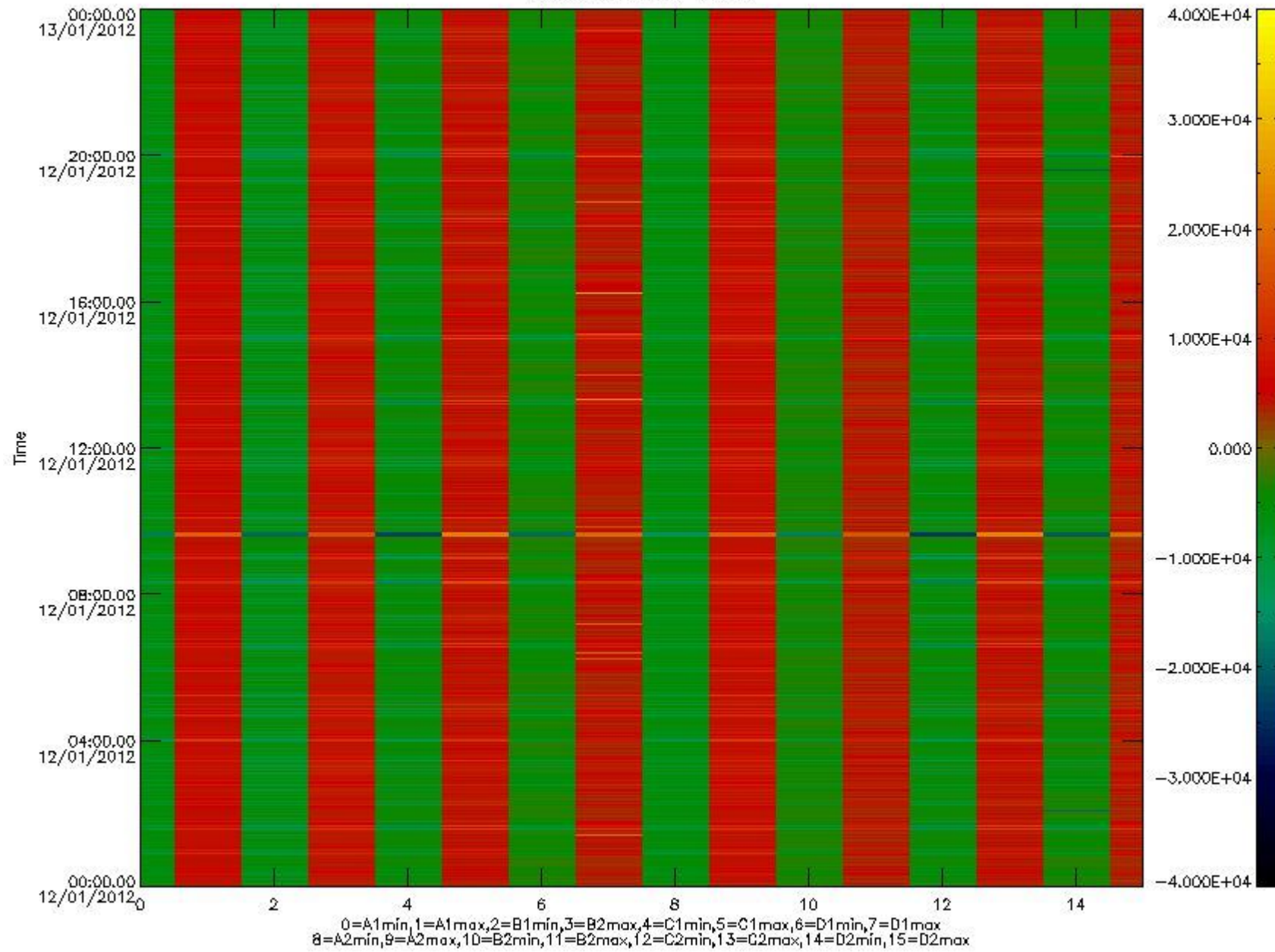


mipas_daily_report_level0_KSPT_L0_4504_N_20120112_10.PNG

The following table shows channel statistics for all channels for this day.

Channel	Min	Max	ADC
A1	-17641	18642	16bit
B1	-19582	16927	16bit
C1	-24458	23156	16bit
D1	-23240	32767	16bit
A2	-15354	18835	16bit
B2	-17368	17114	16bit
C2	-24297	23827	16bit
D2	-32768	26254	16bit

MIPNLOP_MIPSOUPAC_aux_fields_igm_cal, channel statistics plot
Colour indicates value.



mipas_daily_report_level0_KSPT_L0_4504_N_20120112_11.PNG

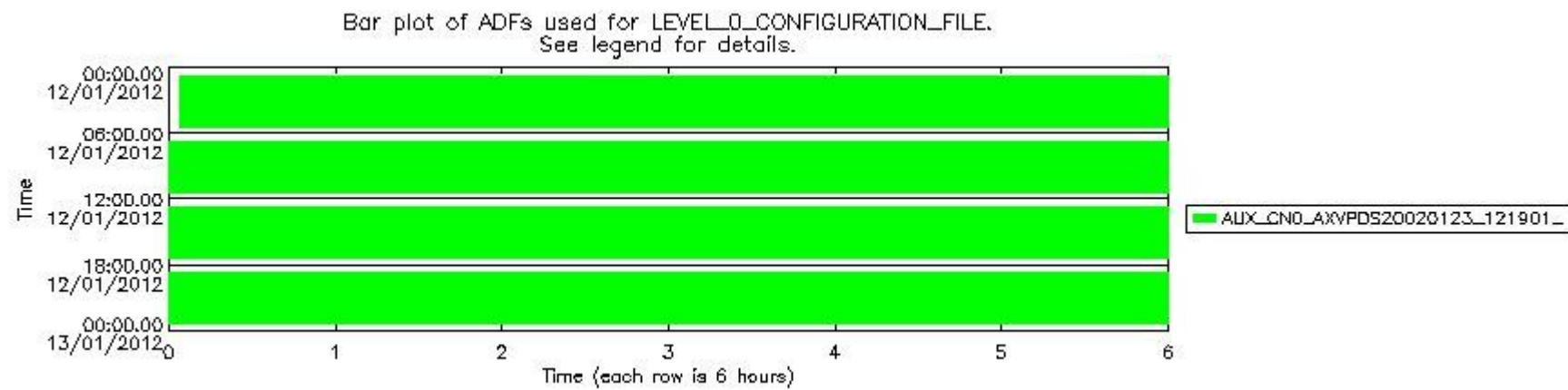
0.3 ADF monitoring

The use of ADFs is shown in two ways:

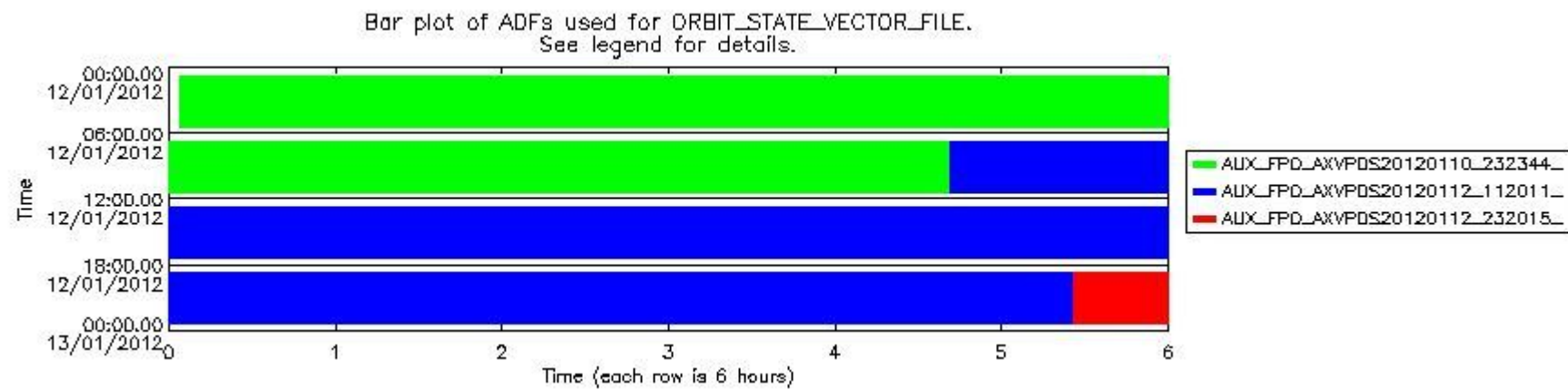
1. By means of two tables that can be used to find the ADF used for a specific product.
2. By means of plots that show changes in ADF using colours.

Number	ADF
0	AUX_CN0_AXVPDS20020123_121901_20020101_000000_20200101_000000
1	AUX_FPO_AXVPDS20120110_232344_20120110_195049_20120120_202416
2	AUX_FPO_AXVPDS20120112_112011_20120111_191404_20120121_212745
3	AUX_FPO_AXVPDS20120112_232015_20120112_183719_20120122_205100

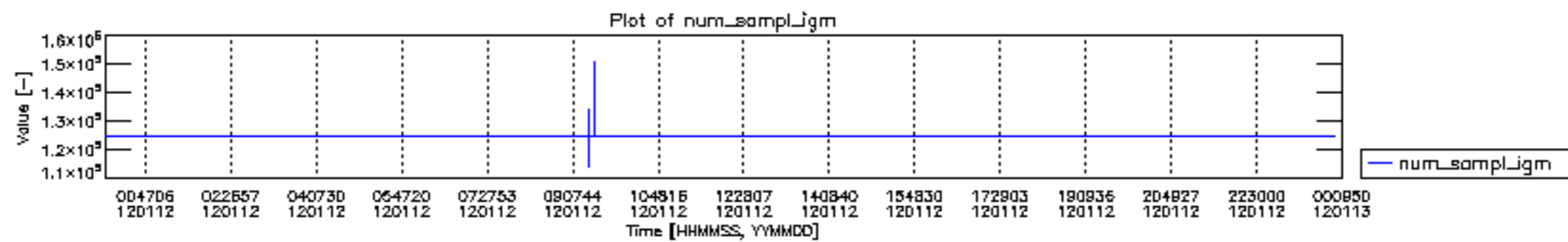
Number	Product name	#CNO	#FPO
0	MIP_NL__0PNPDE20120112_000403_000059293110_00303_51610_5330.N1	0	1
1	MIP_NL__0PNPDE20120112_014153_000043353110_00304_51611_5331.N1	0	1
2	MIP_NL__0PNPDE20120112_025334_000061733110_00305_51612_5332.N1	0	1
3	MIP_NL__0PNPDE20120112_043554_000060333110_00306_51613_5333.N1	0	1
4	MIP_NL__0PNPDK20120112_061553_000041633110_00307_51614_8244.N1	0	1
5	MIP_NL__0PNPDK20120112_072412_000061503110_00308_51615_8245.N1	0	1
6	MIP_NL__0PNPDK20120112_090506_000058463110_00309_51616_8246.N1	0	1
7	MIP_NL__0PNPDK20120112_104131_000060773110_00310_51617_8247.N1	0	2
8	MIP_NL__0PNPDK20120112_122107_000061083110_00311_51618_8248.N1	0	2
9	MIP_NL__0PNPDK20120112_140155_000059333110_00312_51619_8249.N1	0	2
10	MIP_NL__0PNPDK20120112_153947_000058583110_00313_51620_8250.N1	0	2
11	MIP_NL__0PNPDK20120112_171614_000058873110_00314_51621_8251.N1	0	2
12	MIP_NL__0PNPDK20120112_185314_000060393110_00315_51622_8252.N1	0	2
13	MIP_NL__0PNPDE20120112_203150_000044183110_00316_51623_5334.N1	0	2
14	MIP_NL__0PNPDE20120112_214432_000061443110_00316_51623_5335.N1	0	2
15	MIP_NL__0PNPDE20120112_232548_000061563110_00317_51624_5336.N1	0	3

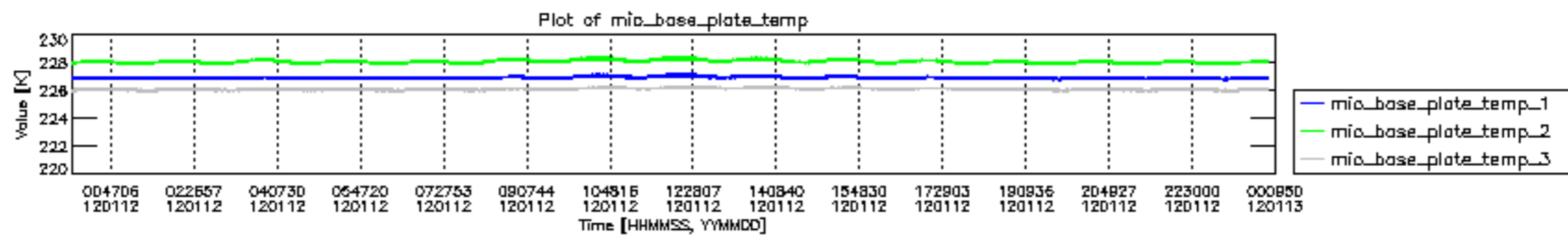


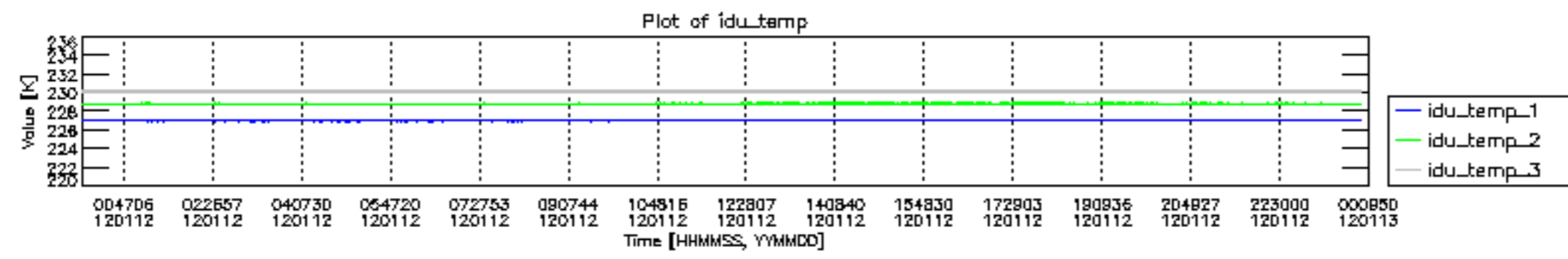
mipas_daily_report_level0_KSPT_L0_4504_N_20120112_12.PNG

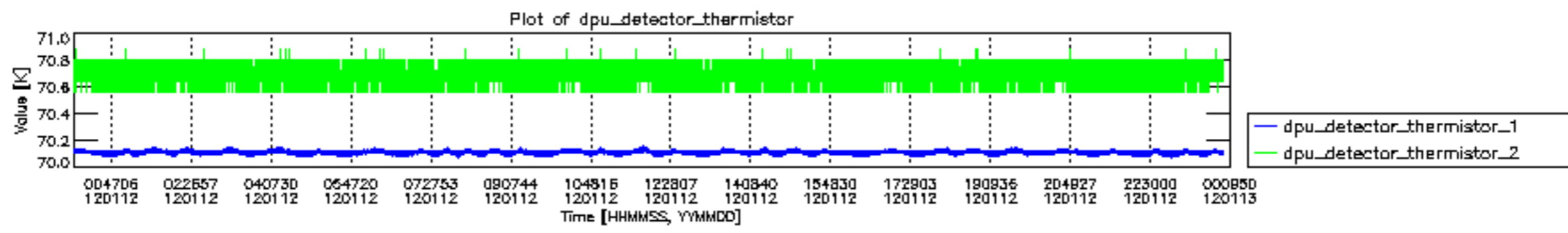


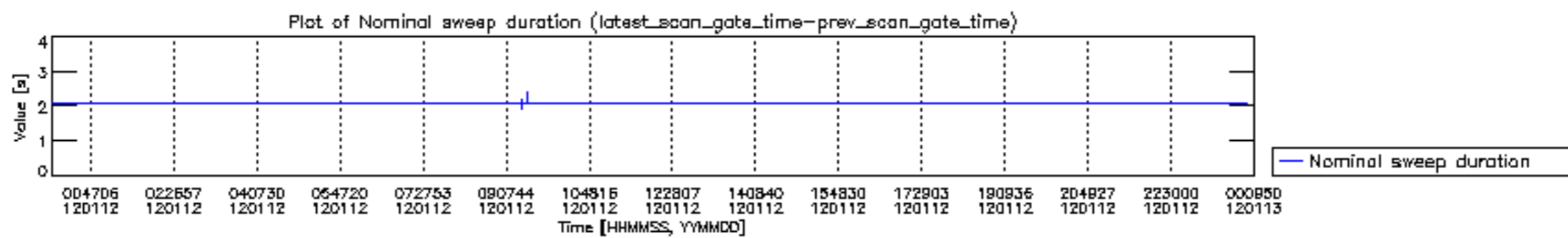
mipas_daily_report_level0_KSPT_L0_4504_N_20120112_13.PNG

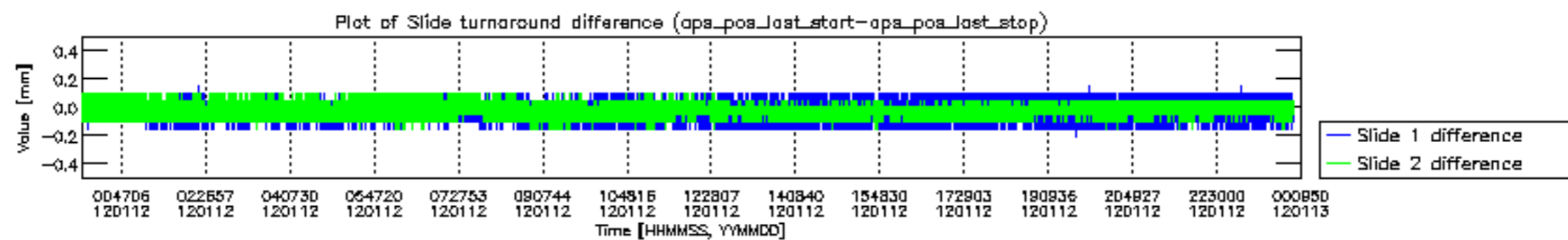


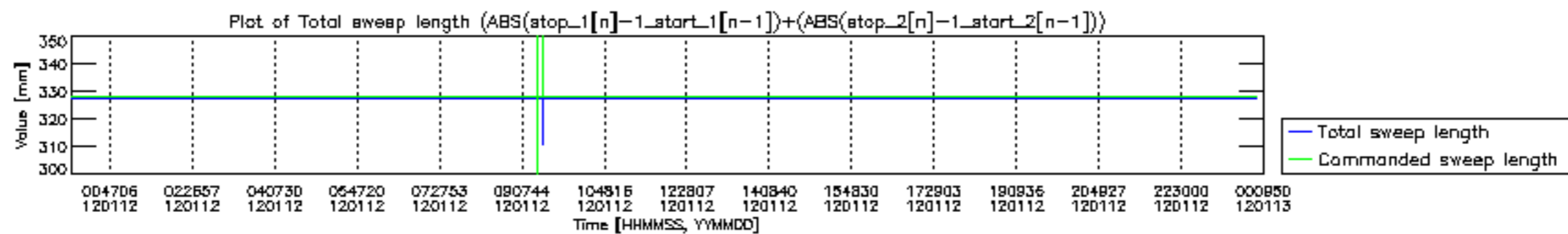


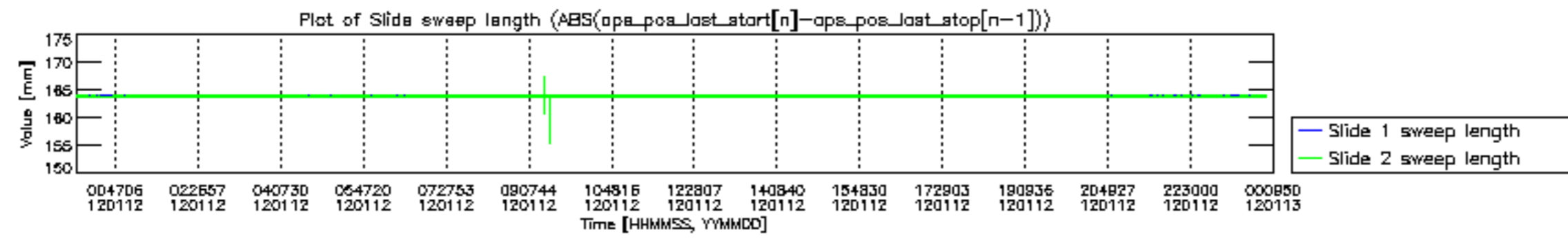


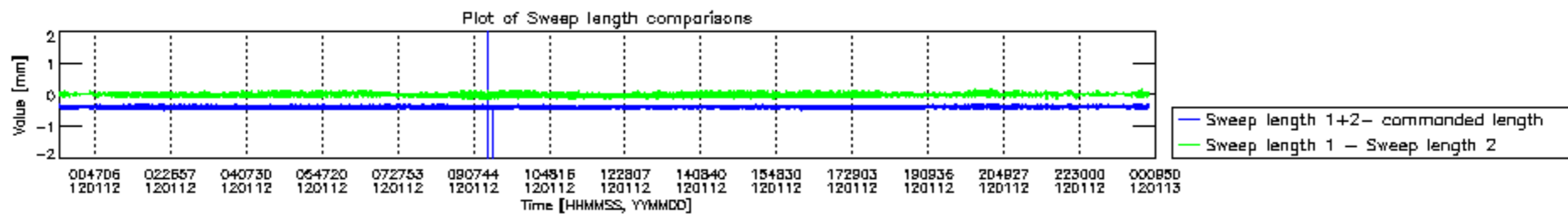


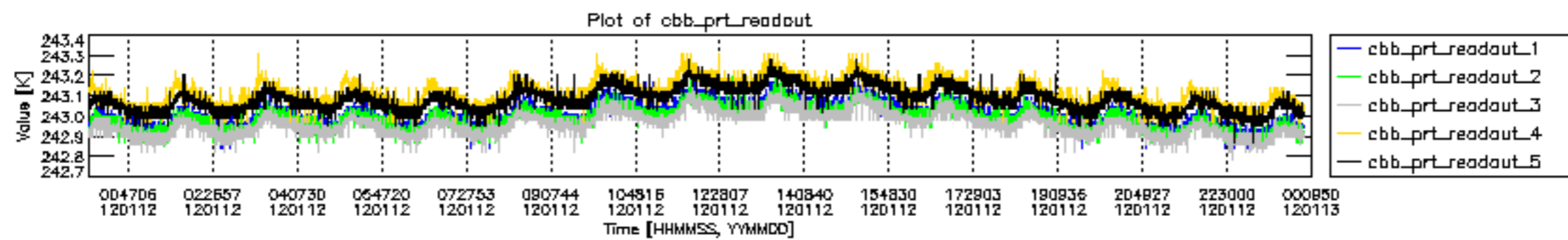


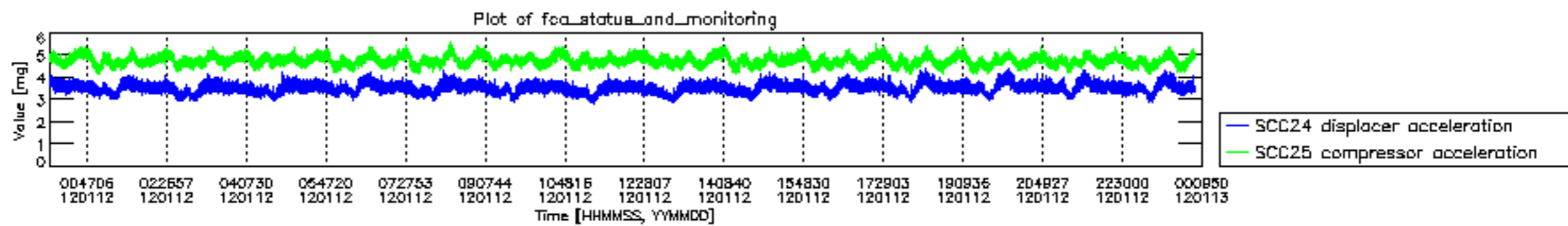












MIPNLOP_MIPSOUPAC_aux_fields_igm_cal, channel statistics plot
 Colour indicates value.

