

0. MIPAS Daily Report for level 0 products

[0.1 General Info](#)

[0.2 Instrument Operational Performance Parameters](#)

[0.3 ADF monitoring](#)

0.1 General Info

This report contains a daily analysis on parameters extracted from MIPAS level 0 data (The MIP_NL__0P product).

0.1.1 Report summary

The table below shows general characteristics of the data that are included into this report.

Item	Value
Report version	v1.6 08-11-2010
Time of report generation	16JAN2012 05:25:05
Data source version	KSPT_L0/4504-N
Processing scope for products	11JAN2012 00:00:00 to 12JAN2012 00:00:00
Start time of first product within scope	11JAN2012 00:39:02
Stop time of last product within scope	12JAN2012 00:05:10
Total number of level 0 products	14
Number of level 0 products with errors	0

0.1.2 Product Quality Indicators per product

The following table shows a summary for each product used in this report.

#	Product name	Start time	Stop time	Prod err	ISP err sign	ISP miss sign	ISP disc sign	rs sign
0	MIP_NL__0PNPDE20120111_003902_000058393110_00289_51596_5323.N1	11JAN2012 00:39:02	11JAN2012 02:16:21	0	0	0	0	0
1	MIP_NL__0PNPDE20120111_021522_000045563110_00290_51597_5324.N1	11JAN2012 02:15:22	11JAN2012 03:31:18	0	0	0	0	0
2	MIP_NL__0PNPDE20120111_033045_000061583110_00291_51598_5325.N1	11JAN2012 03:30:45	11JAN2012 05:13:23	0	0	0	0	0
3	MIP_NL__0PNPDE20120111_051250_000023373110_00292_51599_5326.N1	11JAN2012 05:12:50	11JAN2012 05:51:47	0	0	0	0	0
4	MIP_NL__0PNPDK20120111_091118_000017273110_00294_51601_8236.N1	11JAN2012 09:11:18	11JAN2012 09:40:05	0	0	0	0	0
5	MIP_NL__0PNPDK20120111_093844_000061723110_00295_51602_8237.N1	11JAN2012 09:38:44	11JAN2012 11:21:36	0	0	0	0	0
6	MIP_NL__0PNPDK20120111_111958_000059583110_00296_51603_8238.N1	11JAN2012 11:19:58	11JAN2012 12:59:16	0	0	0	0	0
7	MIP_NL__0PNPDK20120111_125815_000059523110_00297_51604_8239.N1	11JAN2012 12:58:15	11JAN2012 14:37:27	0	0	0	0	0
8	MIP_NL__0PNPDK20120111_143622_000059913110_00298_51605_8240.N1	11JAN2012 14:36:22	11JAN2012 16:16:13	0	0	0	0	0
9	MIP_NL__0PNPDK20120111_161529_000058013110_00299_51606_8241.N1	11JAN2012 16:15:29	11JAN2012 17:52:11	0	0	0	0	0
10	MIP_NL__0PNPDK20120111_175108_000060683110_00300_51607_8242.N1	11JAN2012 17:51:08	11JAN2012 19:32:16	0	0	0	0	0
11	MIP_NL__0PNPDK20120111_193015_000060583110_00301_51608_8243.N1	11JAN2012 19:30:15	11JAN2012 21:11:13	0	0	0	0	0
12	MIP_NL__0PNPDE20120111_211004_000043643110_00302_51609_5328.N1	11JAN2012 21:10:04	11JAN2012 22:22:48	0	0	0	0	0
13	MIP_NL__0PNPDE20120111_222145_000062043110_00302_51609_5329.N1	11JAN2012 22:21:45	12JAN2012 00:05:10	0	0	0	0	0

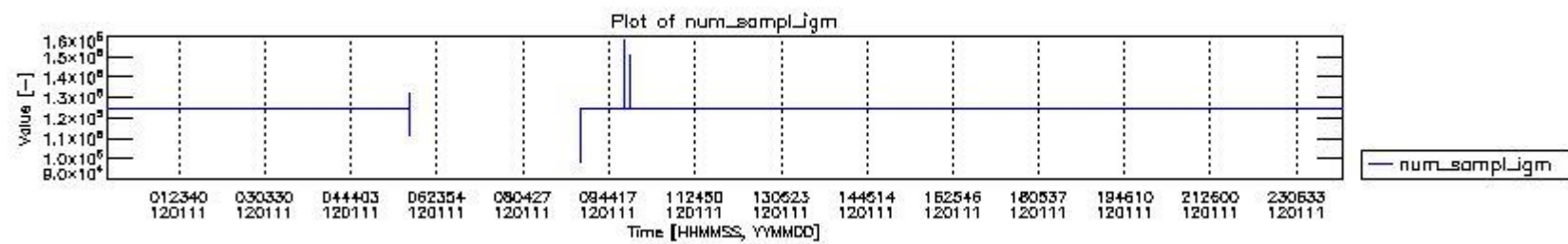
0.2 Instrument Operational Performance Parameters

The following plots give an overview of various instrument parameters for this day. The instrument parameters are part of the auxiliary data field within the source packets of the MIP_NL__0P product. The auxiliary data is normally included twice per interferogram. Note that only the first packet is currently included in monitoring.

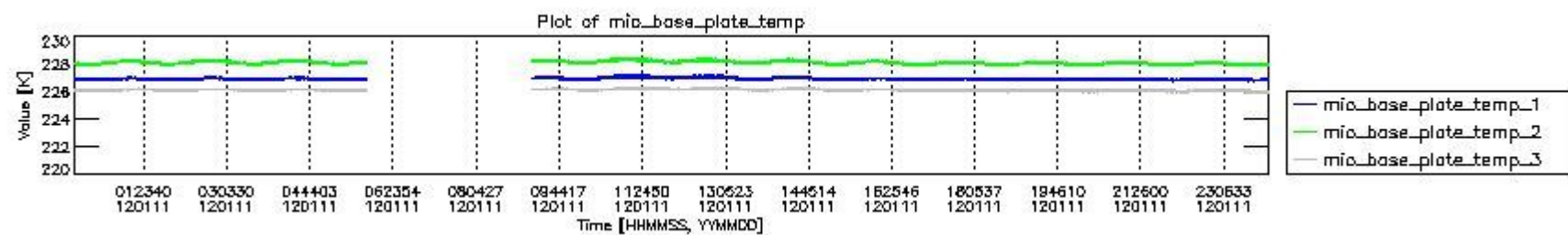
The following table shows the counts of various interferogram number of samples

Number of igm samples	Count [#]	Count [%]
98847	1	0.0027844295
111696	1	0.0027844295
118724	1	0.0027844295
123398	1	0.0027844295

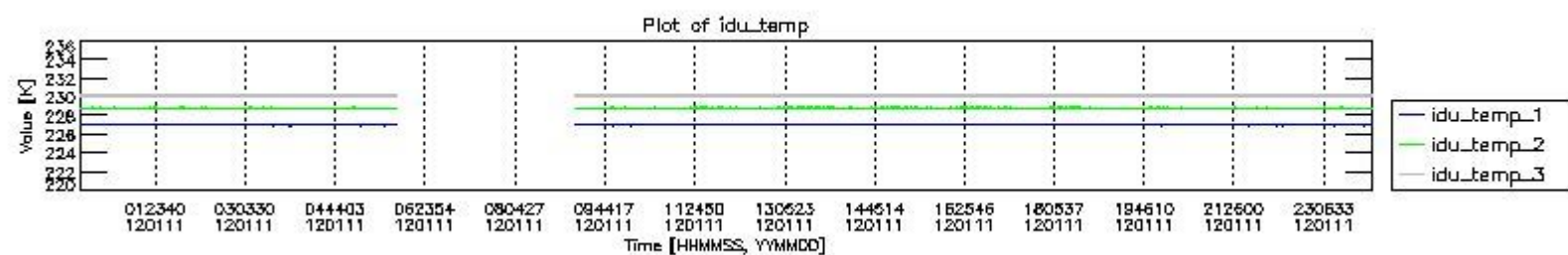
124099	1	0.0027844295
124800	33359	92.885783
124803	2543	7.0808041
127531	1	0.0027844295
131322	1	0.0027844295
131828	1	0.0027844295
147663	1	0.0027844295
150394	1	0.0027844295
151454	1	0.0027844295
157976	1	0.0027844295



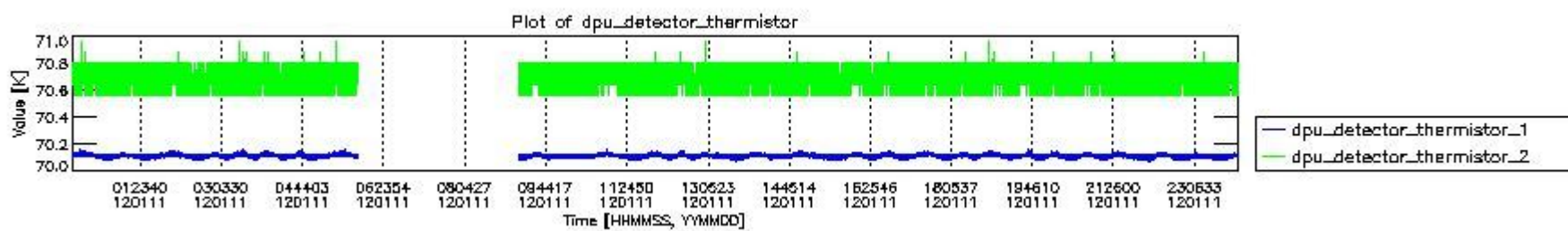
mipas_daily_report_level0_KSPT_L0_4504_N_20120111_0.PNG



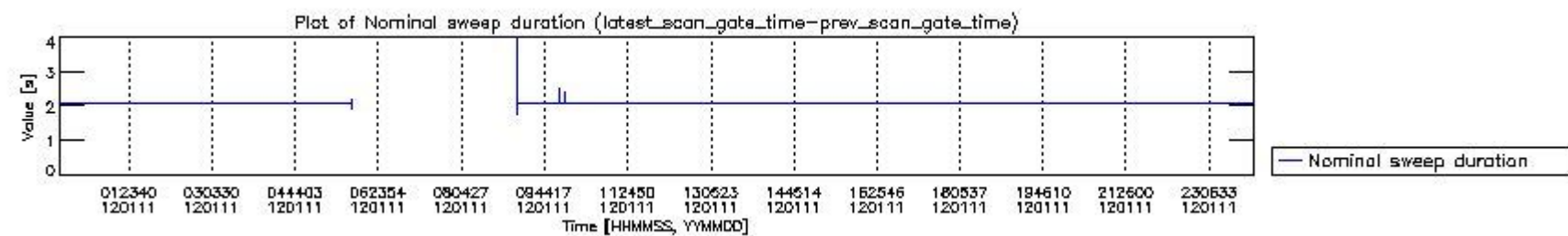
mipas_daily_report_level0_KSPT_L0_4504_N_20120111_1.PNG



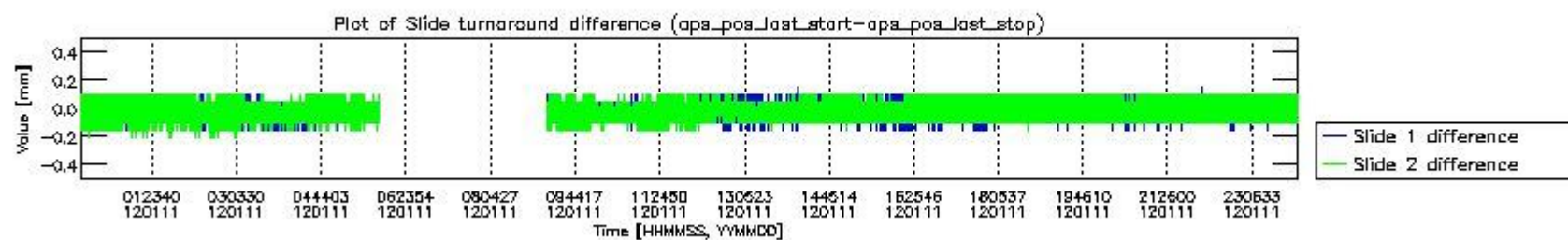
mipas_daily_report_level0_KSPT_L0_4504_N_20120111_2.PNG



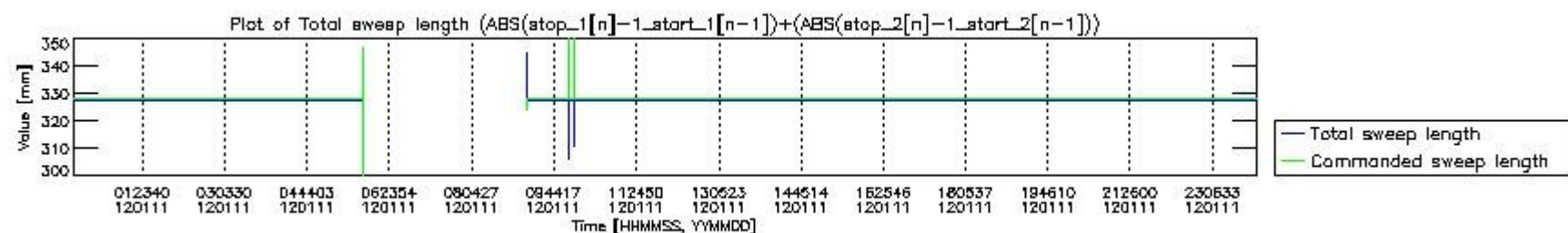
mipas_daily_report_level0_KSPT_L0_4504_N_20120111_3.PNG



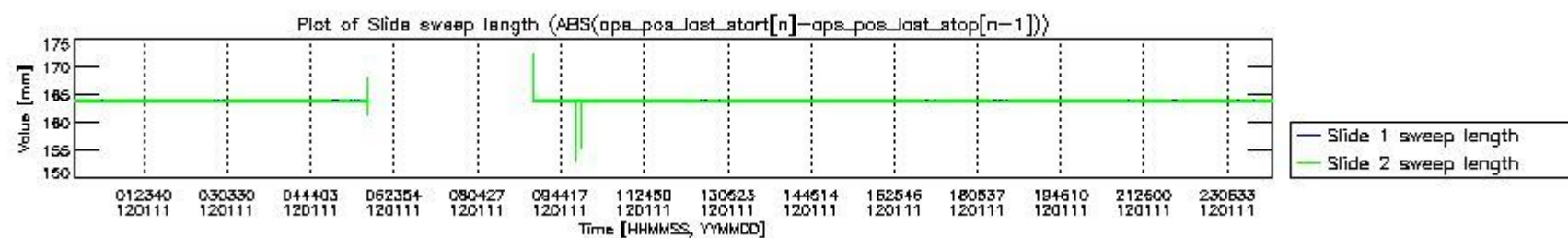
mipas_daily_report_level0_KSPT_L0_4504_N_20120111_4.PNG



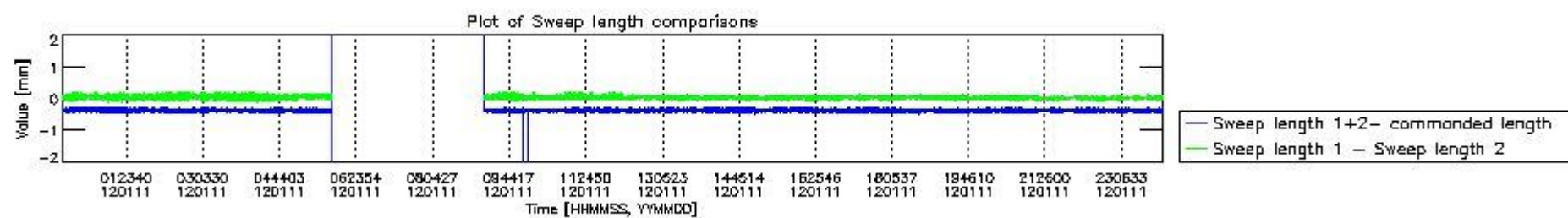
mipas_daily_report_level0_KSPT_L0_4504_N_20120111_5.PNG



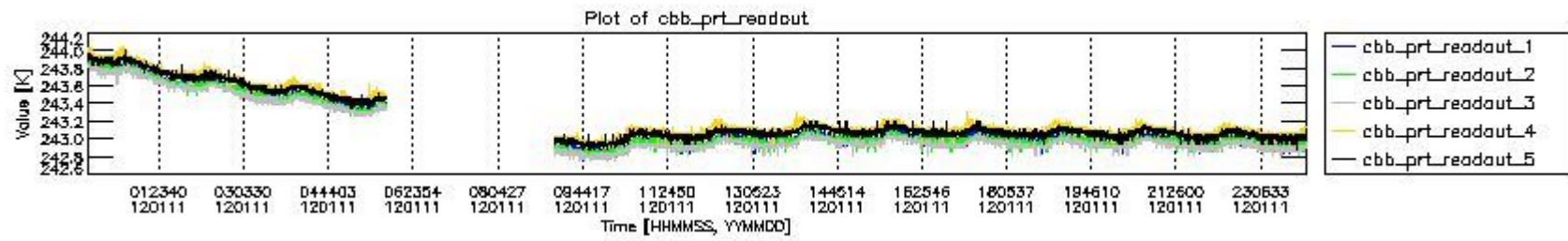
mipas_daily_report_level0_KSPT_L0_4504_N_20120111_6.PNG



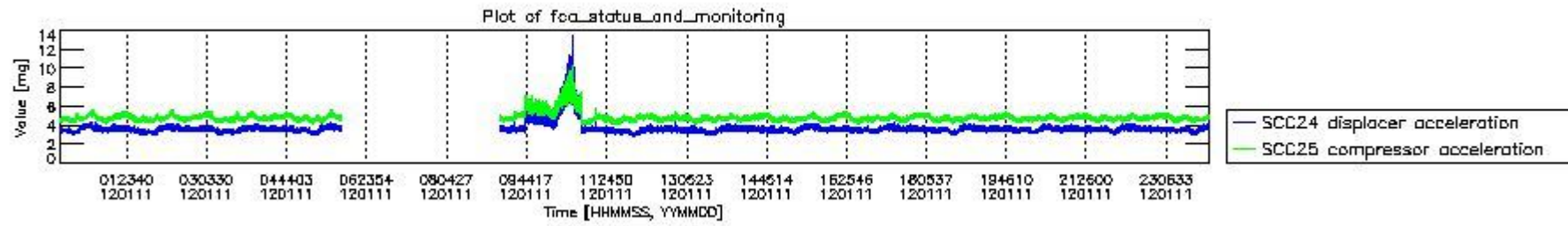
mipas_daily_report_level0_KSPT_L0_4504_N_20120111_7.PNG



mipas_daily_report_level0_KSPT_L0_4504_N_20120111_8.PNG



mipas_daily_report_level0_KSPT_L0_4504_N_20120111_9.PNG

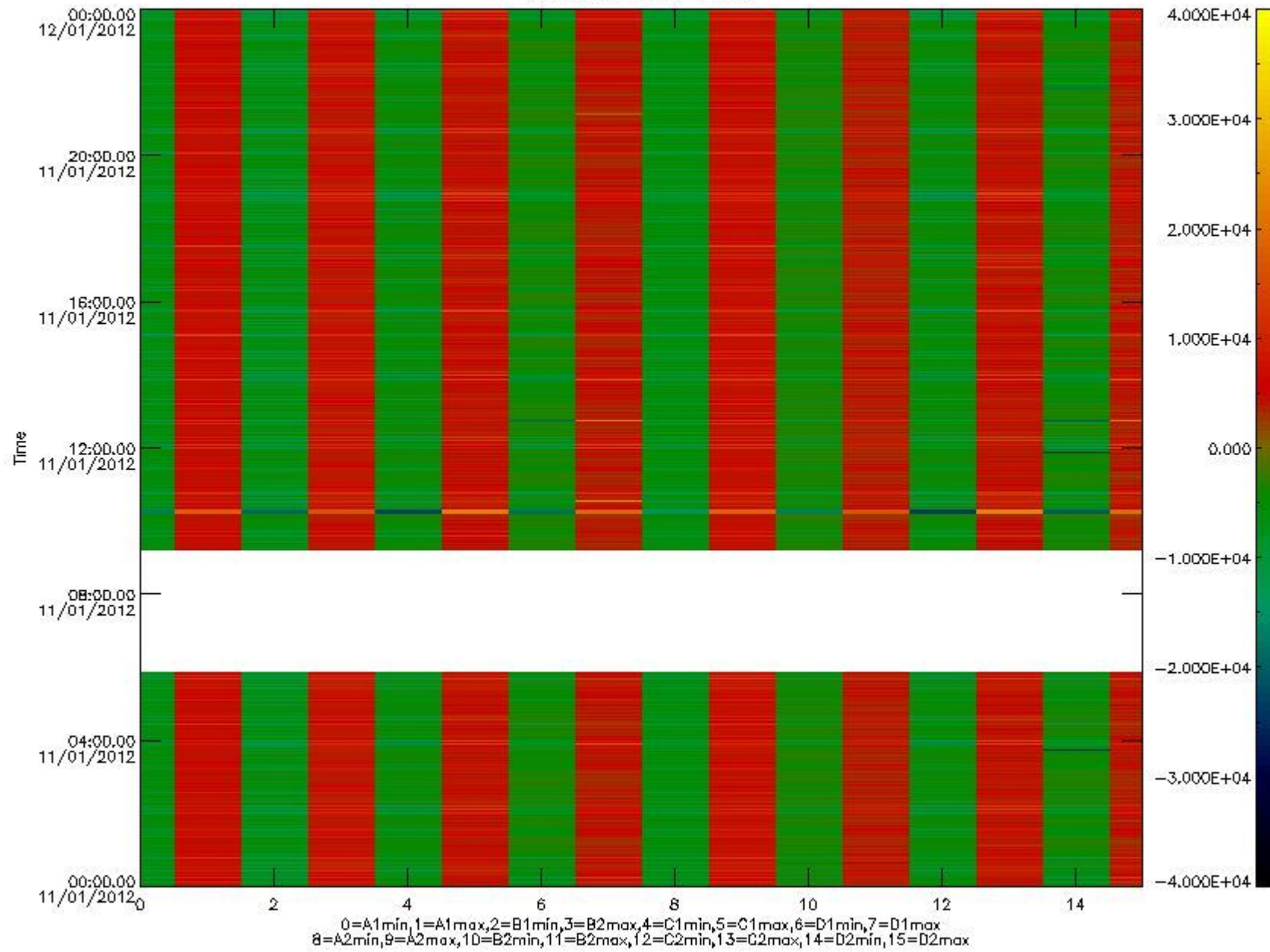


mipas_daily_report_level0_KSPT_L0_4504_N_20120111_10.PNG

The following table shows channel statistics for all channels for this day.

Channel	Min	Max	ADC
A1	-32768	32767	16bit
B1	-32768	32767	16bit
C1	-24045	22995	16bit
D1	-32768	32767	16bit
A2	-32768	28246	16bit
B2	-32768	32767	16bit
C2	-24104	24987	16bit
D2	-32768	32767	16bit

MIPNLOP_MIPSOUPAC_aux_fields_igm_cal, channel statistics plot
Colour indicates value.



mipas_daily_report_level0_KSPT_L0_4504_N_20120111_11.PNG

0.3 ADF monitoring

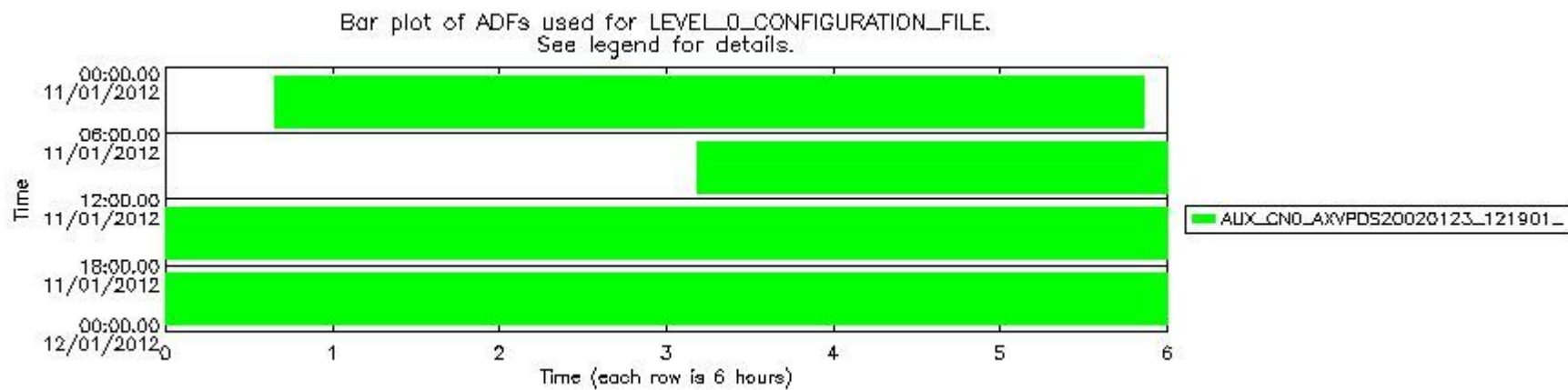
The use of ADFs is shown in two ways:

1. By means of two tables that can be used to find the ADF used for a specific product.
2. By means of plots that show changes in ADF using colours.

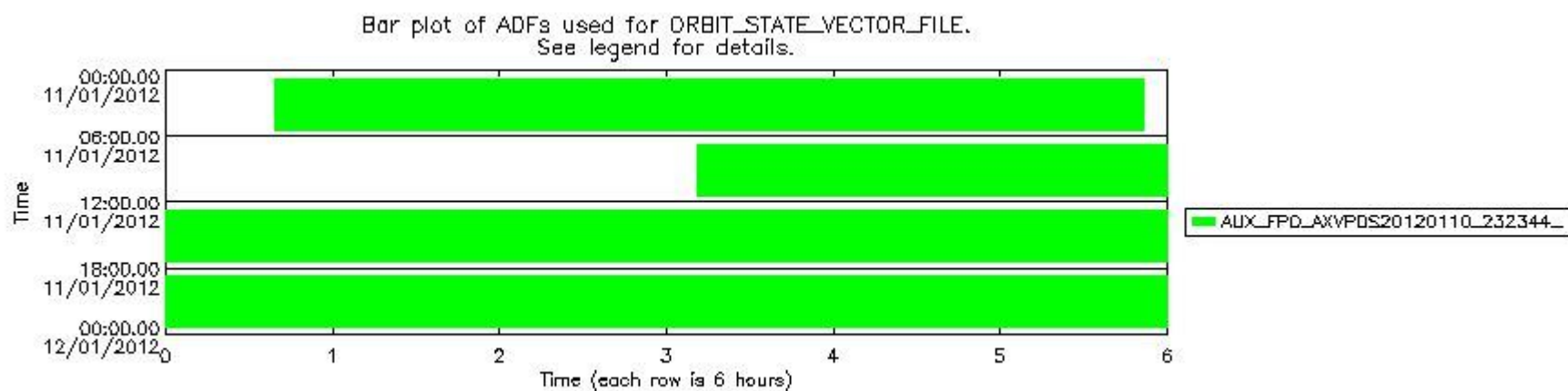
Number	ADF
0	AUX_CN0_AXVPDS20020123_121901_20020101_000000_20200101_000000
1	AUX_FPO_AXVPDS20120110_232344_20120110_195049_20120120_202416

Number	Product name	#CN0	#FPO
0	MIP_NL_0PNPDE20120111_003902_000058393110_00289_51596_5323.N1	0	1

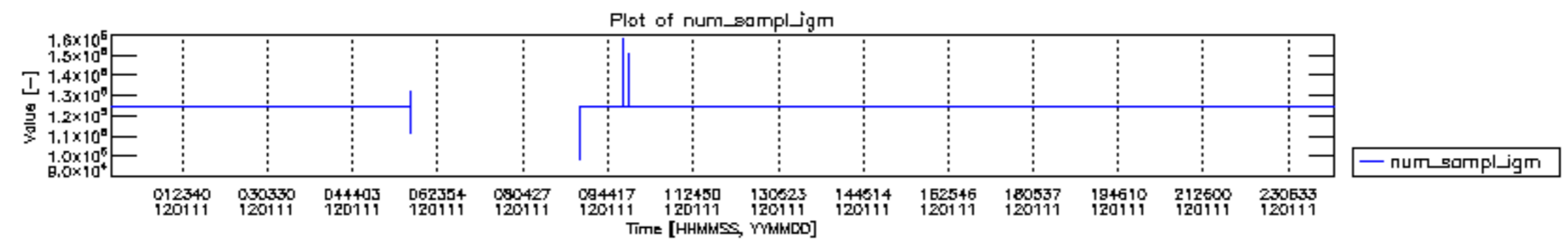
1	MIP_NL__0PNPDE20120111_021522_000045563110_00290_51597_5324.N1	0	1
2	MIP_NL__0PNPDE20120111_033045_000061583110_00291_51598_5325.N1	0	1
3	MIP_NL__0PNPDE20120111_051250_000023373110_00292_51599_5326.N1	0	1
4	MIP_NL__0PNPDK20120111_091118_000017273110_00294_51601_8236.N1	0	1
5	MIP_NL__0PNPDK20120111_093844_000061723110_00295_51602_8237.N1	0	1
6	MIP_NL__0PNPDK20120111_111958_000059583110_00296_51603_8238.N1	0	1
7	MIP_NL__0PNPDK20120111_125815_000059523110_00297_51604_8239.N1	0	1
8	MIP_NL__0PNPDK20120111_143622_000059913110_00298_51605_8240.N1	0	1
9	MIP_NL__0PNPDK20120111_161529_000058013110_00299_51606_8241.N1	0	1
10	MIP_NL__0PNPDK20120111_175108_000060683110_00300_51607_8242.N1	0	1
11	MIP_NL__0PNPDK20120111_193015_000060583110_00301_51608_8243.N1	0	1
12	MIP_NL__0PNPDE20120111_211004_000043643110_00302_51609_5328.N1	0	1
13	MIP_NL__0PNPDE20120111_222145_000062043110_00302_51609_5329.N1	0	1

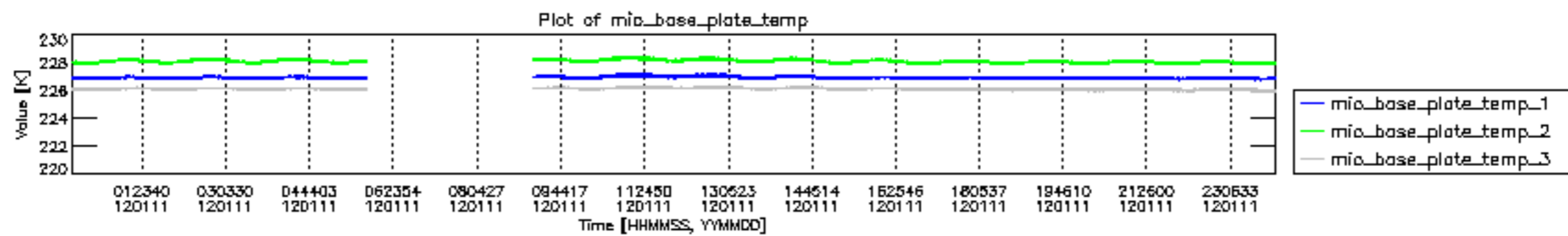


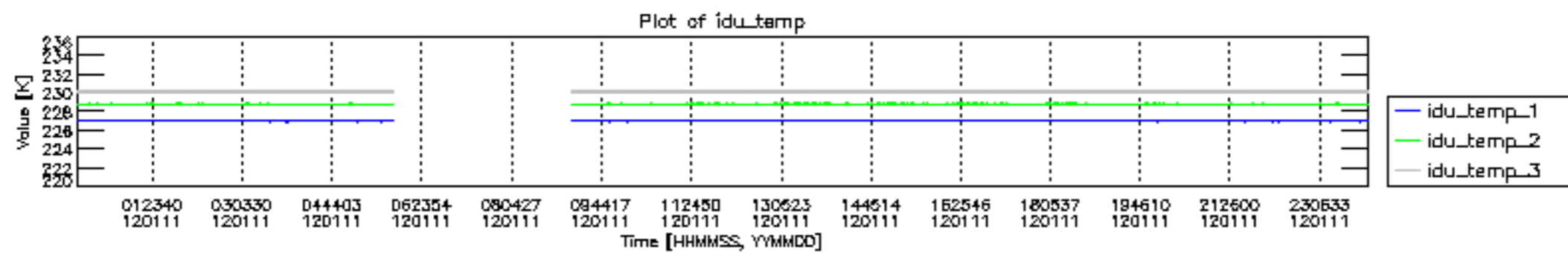
mipas_daily_report_level0_KSPT_L0_4504_N_20120111_12.PNG

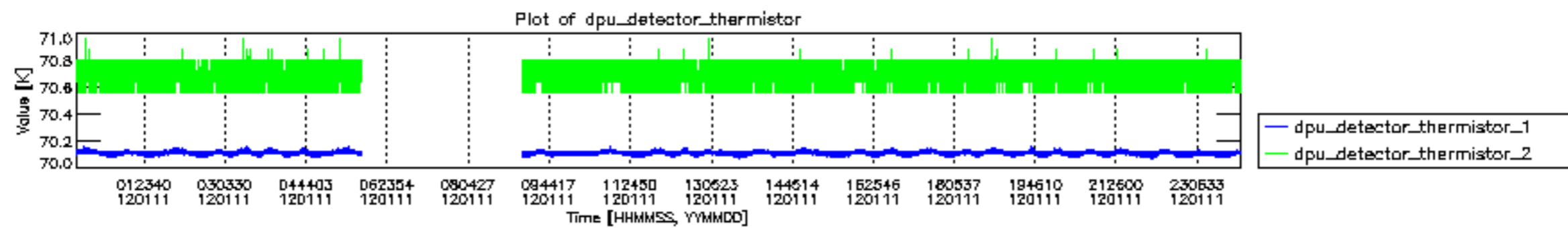


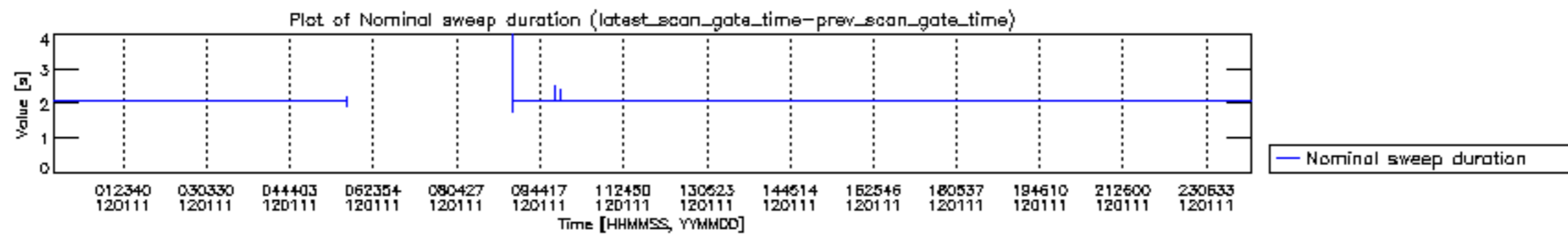
mipas_daily_report_level0_KSPT_L0_4504_N_20120111_13.PNG

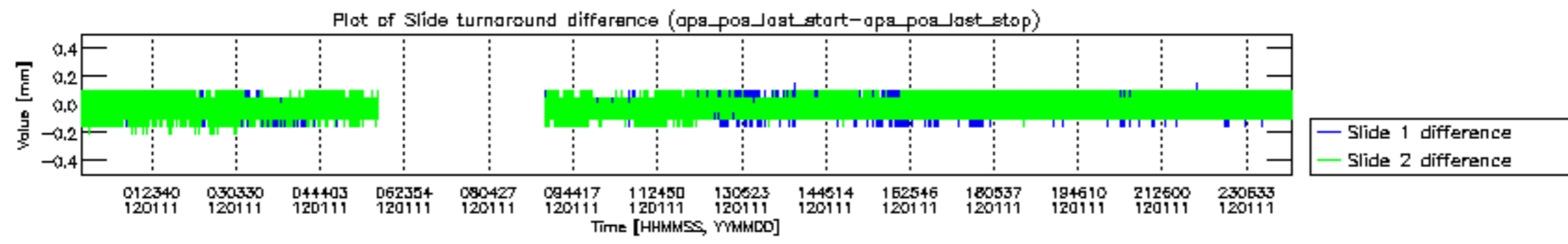


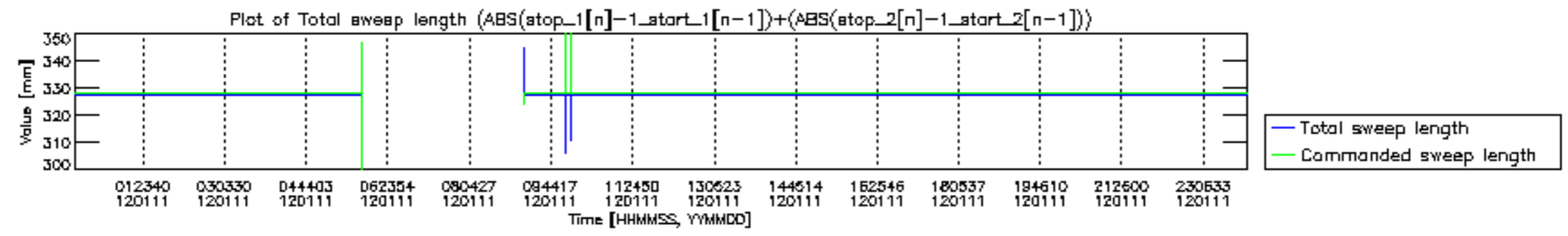


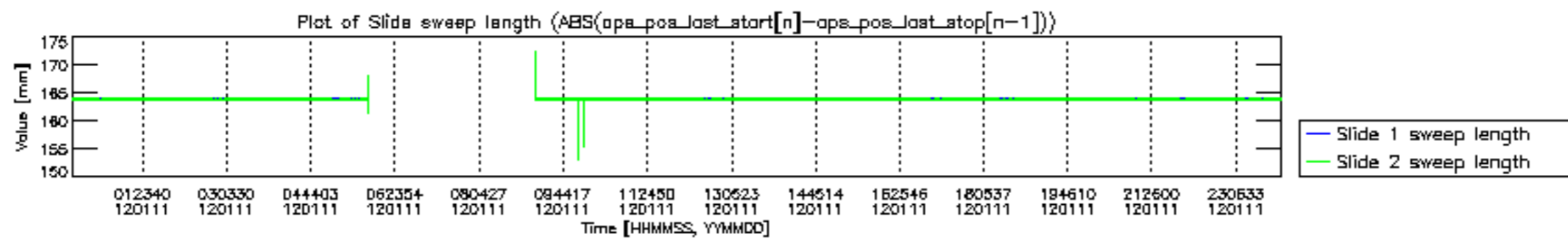


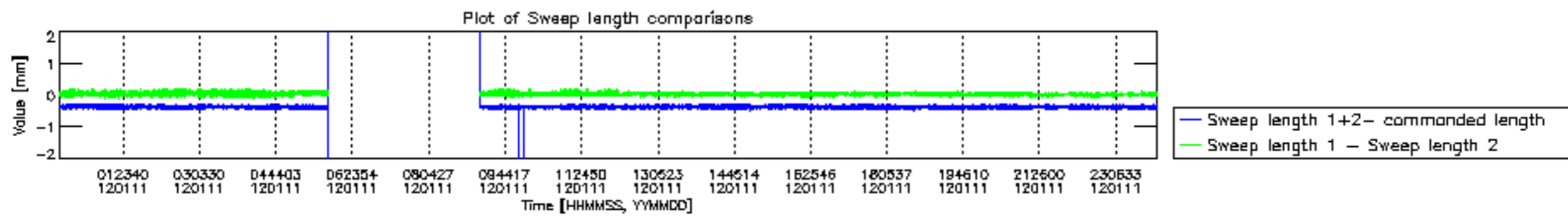


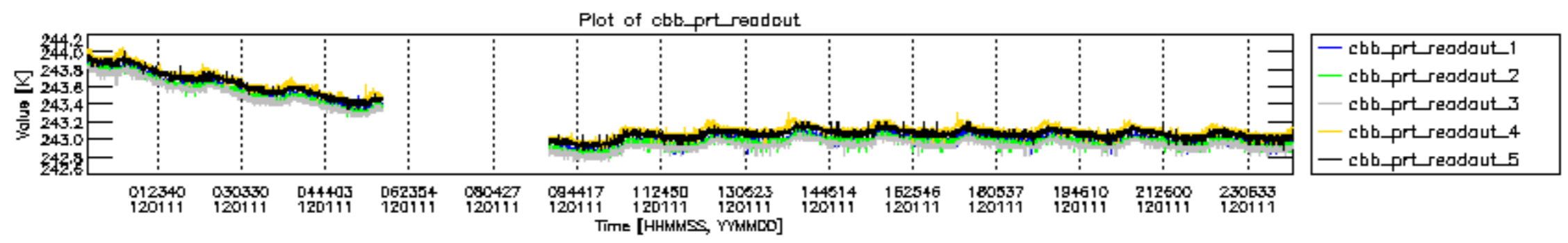


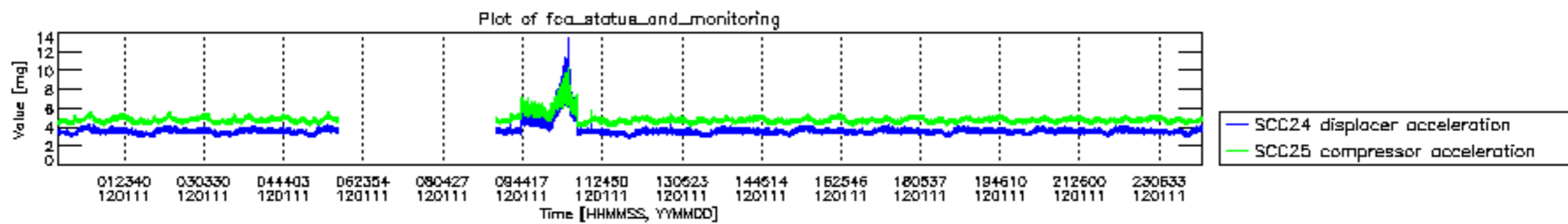












MIPNLOP_MIPSOUPAC_aux_fields_igm_cal, channel statistics plot
 Colour indicates value.

