

0. MIPAS Daily Report for level 0 products

[0.1 General Info](#)

[0.2 Instrument Operational Performance Parameters](#)

[0.3 ADF monitoring](#)

0.1 General Info

This report contains a daily analysis on parameters extracted from MIPAS level 0 data (The MIP_NL__0P product).

0.1.1 Report summary

The table below shows general characteristics of the data that are included into this report.

Item	Value
Report version	v1.6 08-11-2010
Time of report generation	11JAN2012 05:28:59
Data source version	KSPT_L0/4504-N
Processing scope for products	06JAN2012 00:00:00 to 07JAN2012 00:00:00
Start time of first product within scope	06JAN2012 00:22:36
Stop time of last product within scope	07JAN2012 01:27:14
Total number of level 0 products	15
Number of level 0 products with errors	0

0.1.2 Product Quality Indicators per product

The following table shows a summary for each product used in this report.

#	Product name	Start time	Stop time	Prod err	ISP err sign	ISP miss sign	ISP disc sign	rs sign
0	MIP_NL__OPNPDE20120106_002236_000058813110_00217_51524_5285.N1	06JAN2012 00:22:36	06JAN2012 02:00:37	0	0	0	0	0
1	MIP_NL__OPNPDE20120106_015938_000045193110_00218_51525_5286.N1	06JAN2012 01:59:38	06JAN2012 03:14:57	0	0	0	0	0
2	MIP_NL__OPNPDE20120106_031421_000061233110_00219_51526_5287.N1	06JAN2012 03:14:21	06JAN2012 04:56:24	0	0	0	0	0
3	MIP_NL__OPNPDK20120106_063603_000040613110_00221_51528_7995.N1	06JAN2012 06:36:03	06JAN2012 07:43:44	0	0	0	0	0
4	MIP_NL__OPNPDK20120106_074243_000060773110_00222_51529_7996.N1	06JAN2012 07:42:43	06JAN2012 09:24:00	0	0	0	0	0
5	MIP_NL__OPNPDK20120106_092224_000061903110_00223_51530_7997.N1	06JAN2012 09:22:24	06JAN2012 11:05:33	0	0	0	0	0
6	MIP_NL__OPNPDK20120106_110403_000059853110_00224_51531_7998.N1	06JAN2012 11:04:03	06JAN2012 12:43:48	0	0	0	0	0
7	MIP_NL__OPNPDK20120106_124250_000059283110_00225_51532_7999.N1	06JAN2012 12:42:50	06JAN2012 14:21:38	0	0	0	0	0
8	MIP_NL__OPNPDK20120106_142038_000059543110_00226_51533_8000.N1	06JAN2012 14:20:38	06JAN2012 15:59:51	0	0	0	0	0
9	MIP_NL__OPNPDK20120106_155907_000058873110_00227_51534_8001.N1	06JAN2012 15:59:07	06JAN2012 17:37:14	0	0	0	0	0
10	MIP_NL__OPNPDK20120106_173605_000057763110_00228_51535_8002.N1	06JAN2012 17:36:05	06JAN2012 19:12:21	0	0	0	0	0
11	MIP_NL__OPNPDK20120106_191123_000060563110_00229_51536_8003.N1	06JAN2012 19:11:23	06JAN2012 20:52:19	0	0	0	0	0
12	MIP_NL__OPNPDE20120106_205059_000044583110_00230_51537_5289.N1	06JAN2012 20:50:59	06JAN2012 22:05:17	0	0	0	0	0
13	MIP_NL__OPNPDE20120106_220419_000061403110_00230_51537_5290.N1	06JAN2012 22:04:19	06JAN2012 23:46:38	0	0	0	0	0
14	MIP_NL__OPNPDE20120106_234540_000060943110_00231_51538_5291.N1	06JAN2012 23:45:40	07JAN2012 01:27:14	0	0	0	0	0

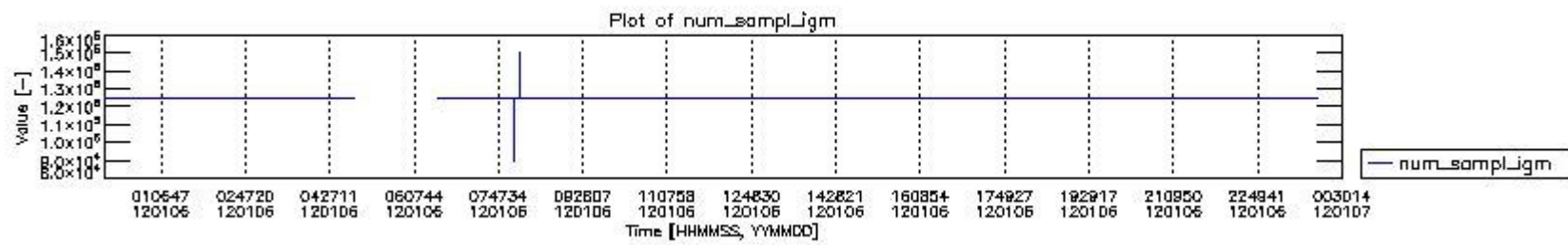
0.2 Instrument Operational Performance Parameters

The following plots give an overview of various instrument parameters for this day. The instrument parameters are part of the auxiliary data field within the source packets of the MIP_NL__0P product. The auxiliary data is normally included twice per interferogram. Note that only the first packet is currently included in monitoring.

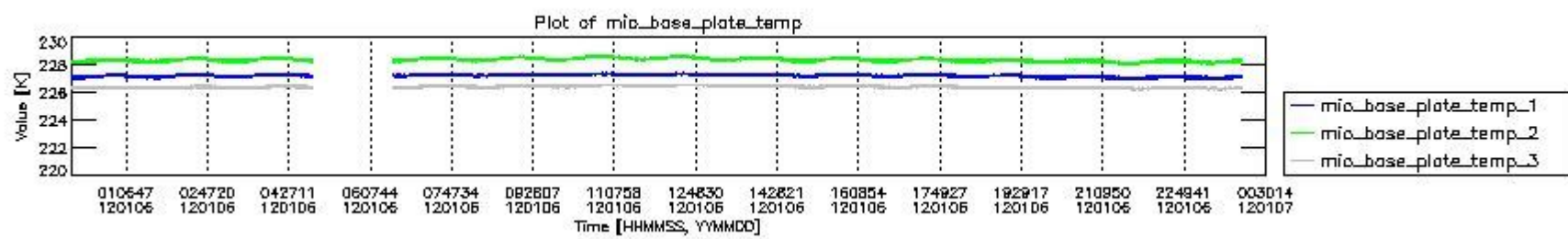
The following table shows the counts of various interferogram number of samples

Number of igm samples	Count [#]	Count [%]
89136	1	0.0025803788
96902	1	0.0025803788
117034	1	0.0025803788

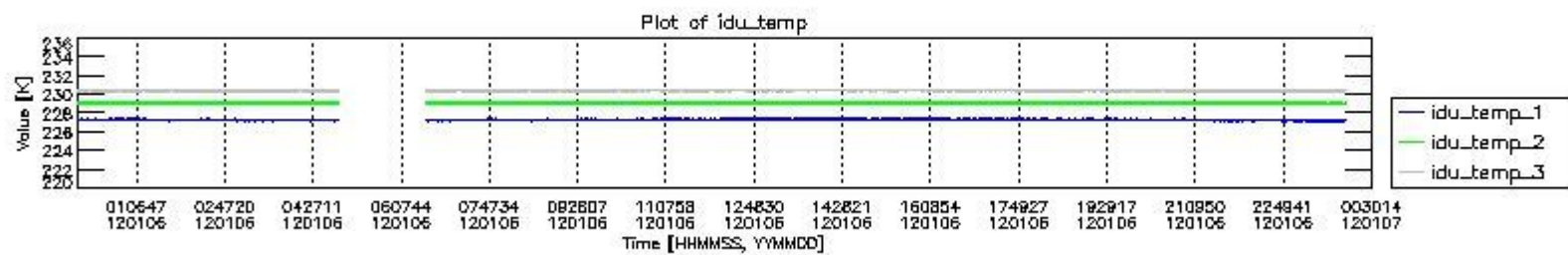
124800	35809	92.400784
124803	2939	7.5837333
127754	1	0.0025803788
147886	1	0.0025803788
150840	1	0.0025803788



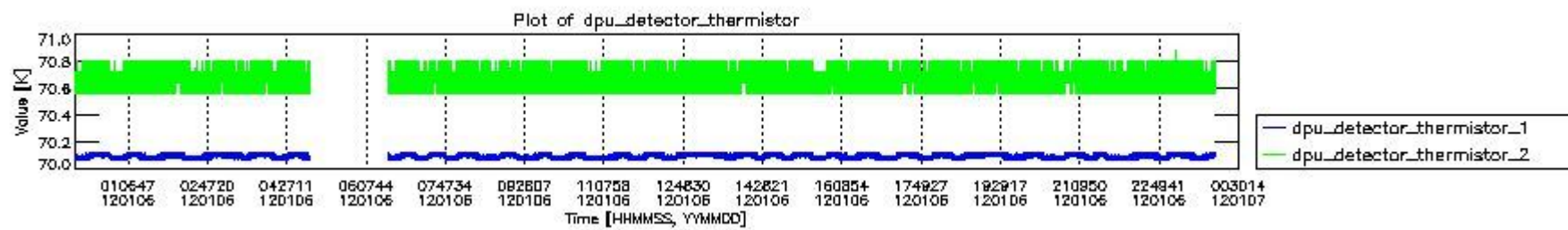
mipas_daily_report_level0_KSPT_L0_4504_N_20120106_0.PNG



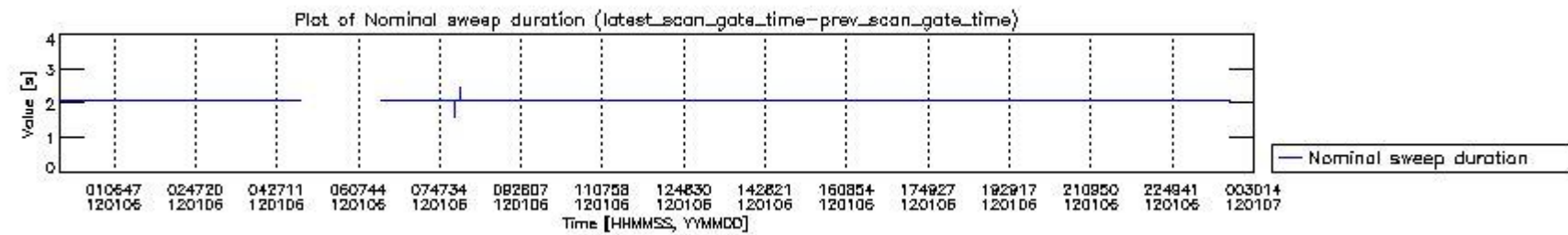
mipas_daily_report_level0_KSPT_L0_4504_N_20120106_1.PNG



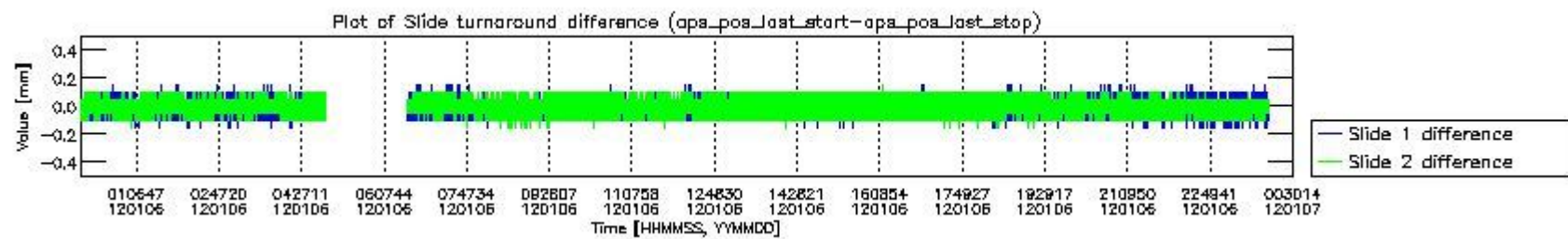
mipas_daily_report_level0_KSPT_L0_4504_N_20120106_2.PNG



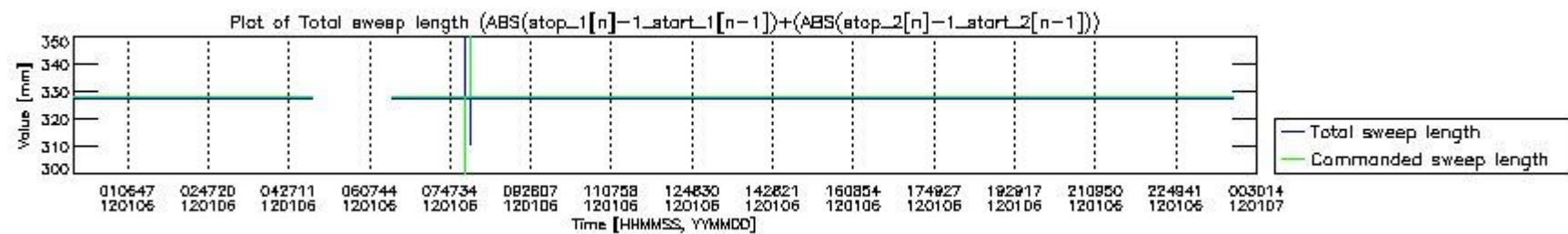
mipas_daily_report_level0_KSPT_L0_4504_N_20120106_3.PNG



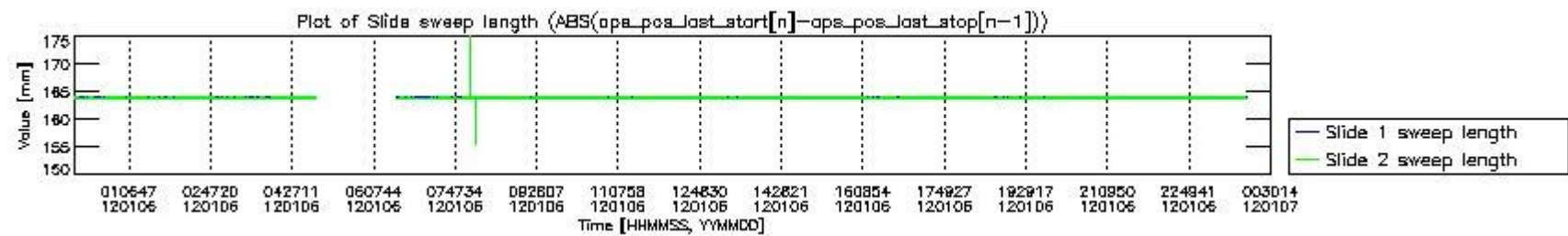
mipas_daily_report_level0_KSPT_L0_4504_N_20120106_4.PNG



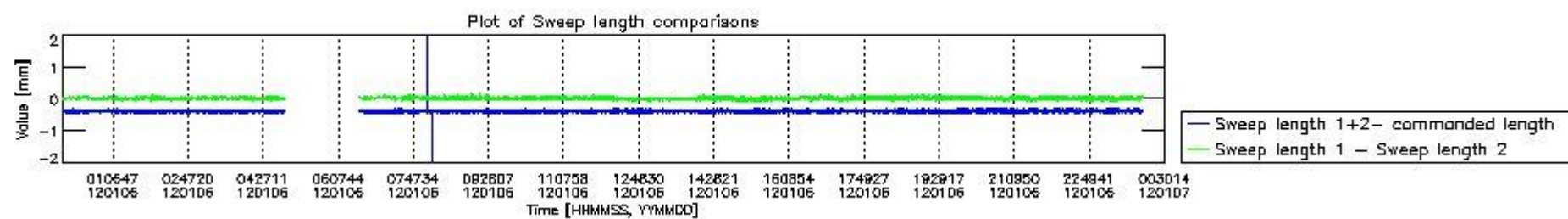
mipas_daily_report_level0_KSPT_L0_4504_N_20120106_5.PNG



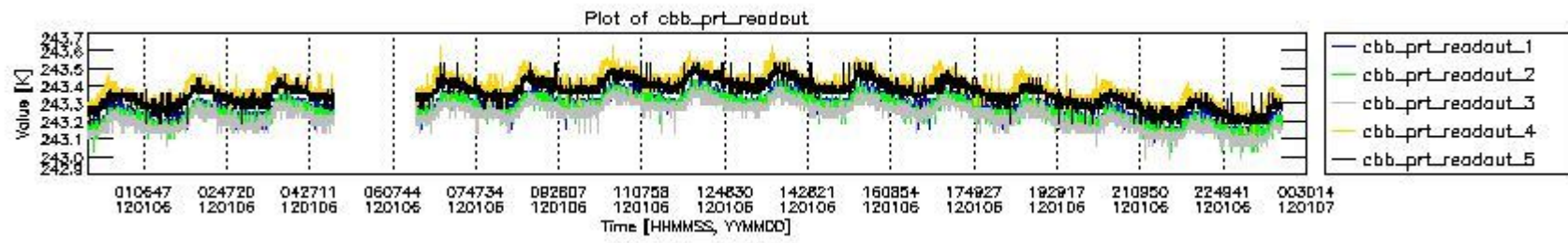
mipas_daily_report_level0_KSPT_L0_4504_N_20120106_6.PNG



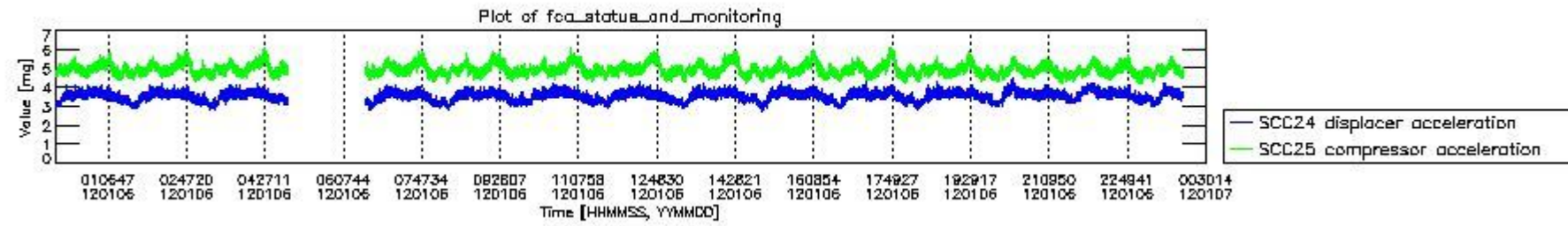
mipas_daily_report_level0_KSPT_L0_4504_N_20120106_7.PNG



mipas_daily_report_level0_KSPT_L0_4504_N_20120106_8.PNG



mipas_daily_report_level0_KSPT_L0_4504_N_20120106_9.PNG

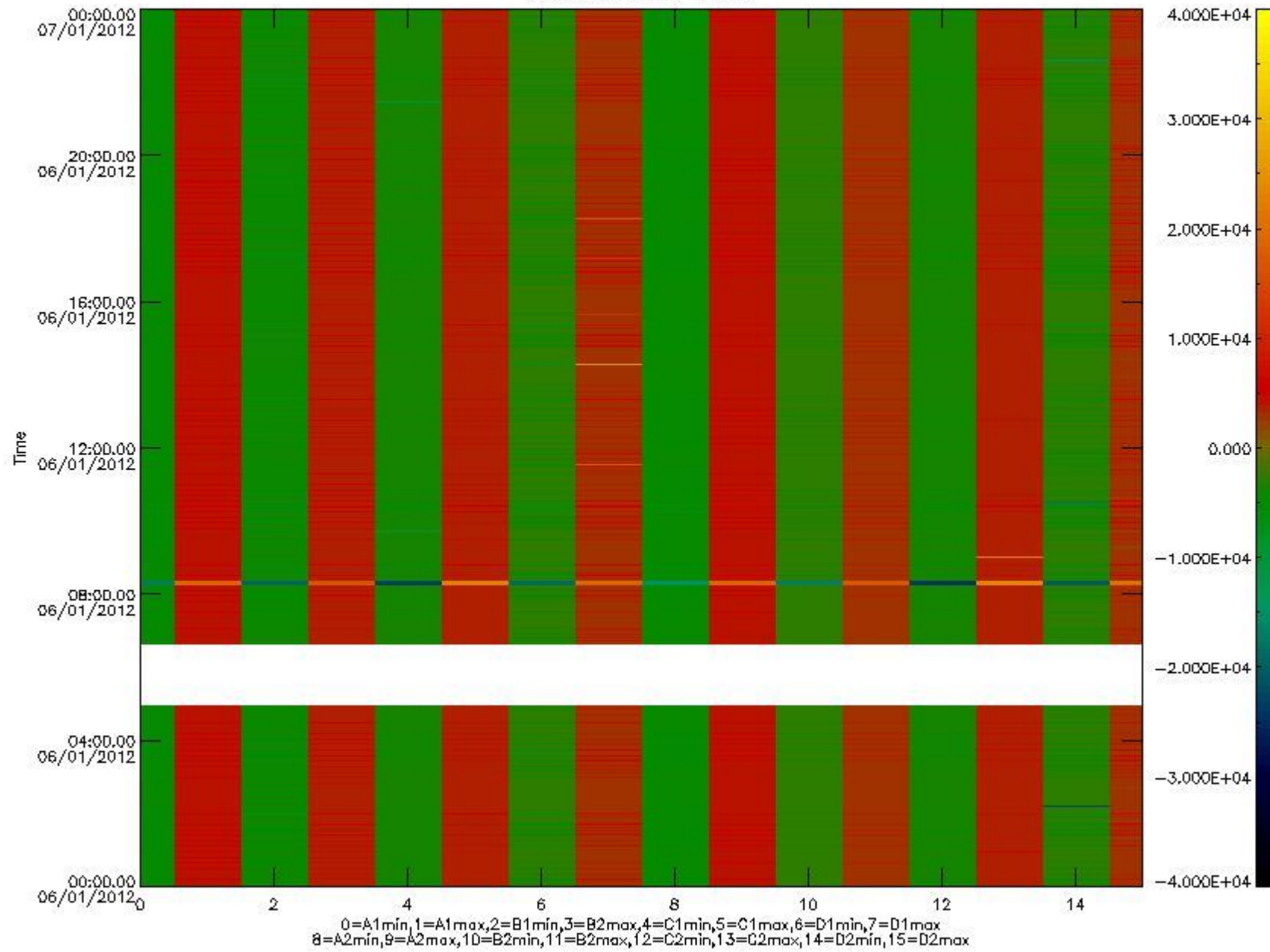


mipas_daily_report_level0_KSPT_L0_4504_N_20120106_10.PNG

The following table shows channel statistics for all channels for this day.

Channel	Min	Max	ADC
A1	-17738	18753	16bit
B1	-19739	17047	16bit
C1	-23543	23440	16bit
D1	-19544	30113	16bit
A2	-15434	18948	16bit
B2	-17548	17263	16bit
C2	-24559	24118	16bit
D2	-32768	21283	16bit

MIPNLOP_MIPSOUPAC_aux_fields_1gm_cal, channel statistics plot
Colour indicates value.



mipas_daily_report_level0_KSPT_L0_4504_N_20120106_11.PNG

0.3 ADF monitoring

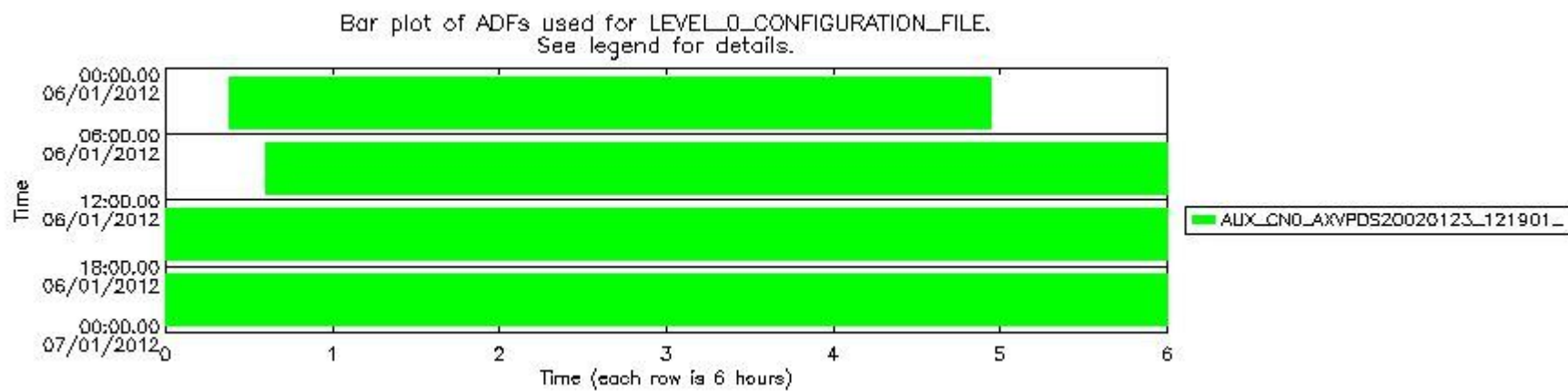
The use of ADFs is shown in two ways:

1. By means of two tables that can be used to find the ADF used for a specific product.
2. By means of plots that show changes in ADF using colours.

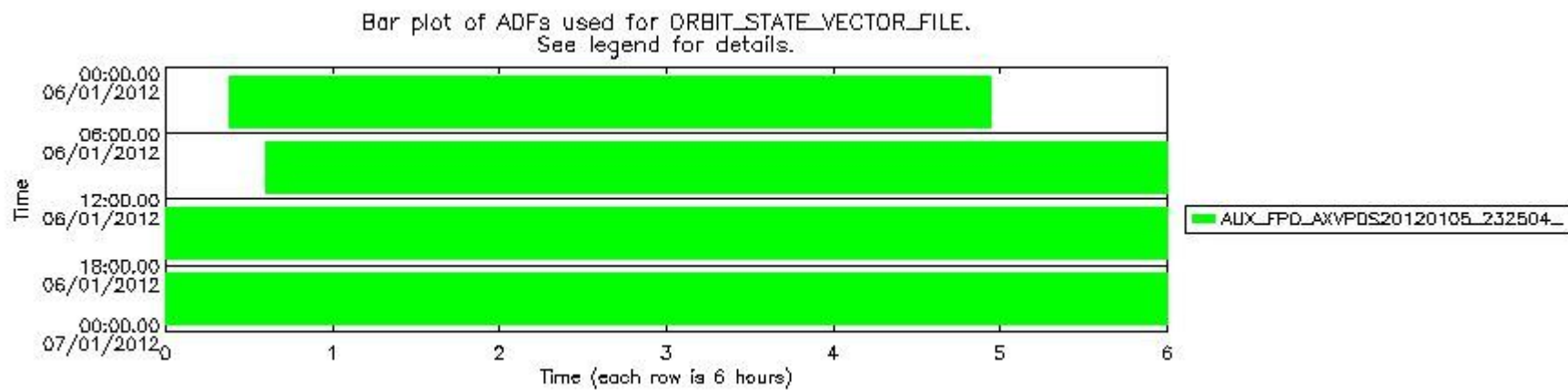
Number	ADF
0	AUX_CN0_AXVPDS20020123_121901_20020101_000000_20200101_000000
1	AUX_FPO_AXVPDS20120105_232504_20120105_193406_20120115_200732

Number	Product name	#CN0	#FPO
0	MIP_NL_0PNPDE20120106_002236_000058813110_00217_51524_5285.N1	0	1

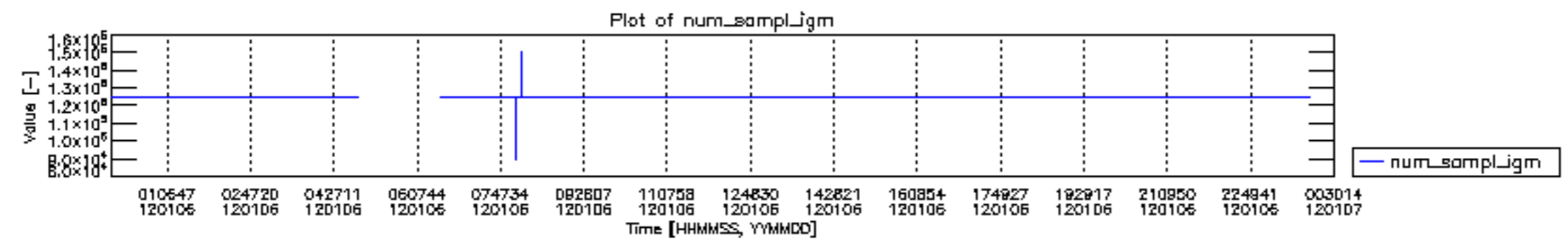
1	MIP_NL__0PNPDE20120106_015938_000045193110_00218_51525_5286.N1	0	1
2	MIP_NL__0PNPDE20120106_031421_000061233110_00219_51526_5287.N1	0	1
3	MIP_NL__0PNPDK20120106_063603_000040613110_00221_51528_7995.N1	0	1
4	MIP_NL__0PNPDK20120106_074243_000060773110_00222_51529_7996.N1	0	1
5	MIP_NL__0PNPDK20120106_092224_000061903110_00223_51530_7997.N1	0	1
6	MIP_NL__0PNPDK20120106_110403_000059853110_00224_51531_7998.N1	0	1
7	MIP_NL__0PNPDK20120106_124250_000059283110_00225_51532_7999.N1	0	1
8	MIP_NL__0PNPDK20120106_142038_000059543110_00226_51533_8000.N1	0	1
9	MIP_NL__0PNPDK20120106_155907_000058873110_00227_51534_8001.N1	0	1
10	MIP_NL__0PNPDK20120106_173605_000057763110_00228_51535_8002.N1	0	1
11	MIP_NL__0PNPDK20120106_191123_000060563110_00229_51536_8003.N1	0	1
12	MIP_NL__0PNPDE20120106_205059_000044583110_00230_51537_5289.N1	0	1
13	MIP_NL__0PNPDE20120106_220419_000061403110_00230_51537_5290.N1	0	1
14	MIP_NL__0PNPDE20120106_234540_000060943110_00231_51538_5291.N1	0	1

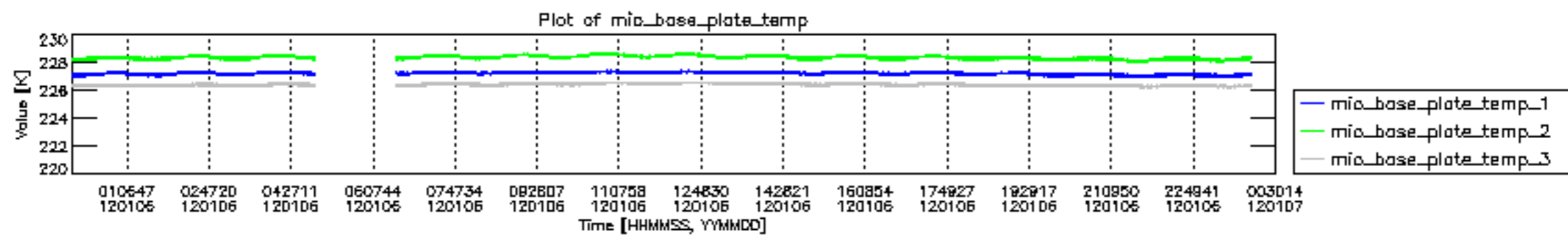


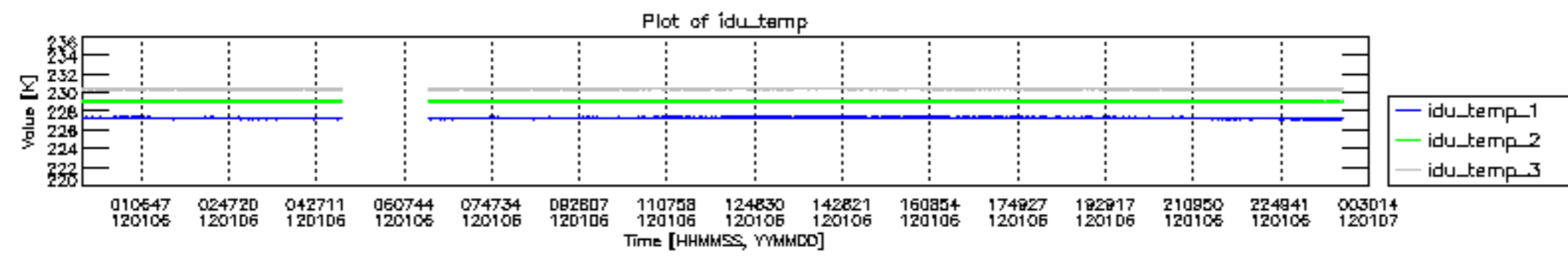
mipas_daily_report_level0_KSPT_L0_4504_N_20120106_12.PNG

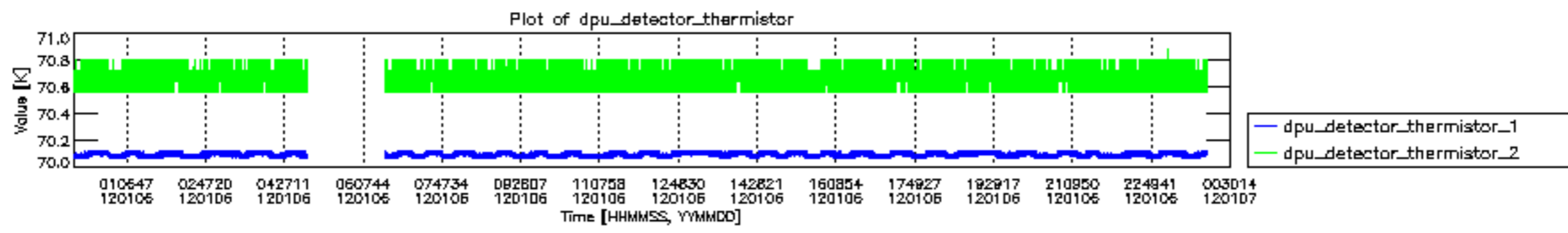


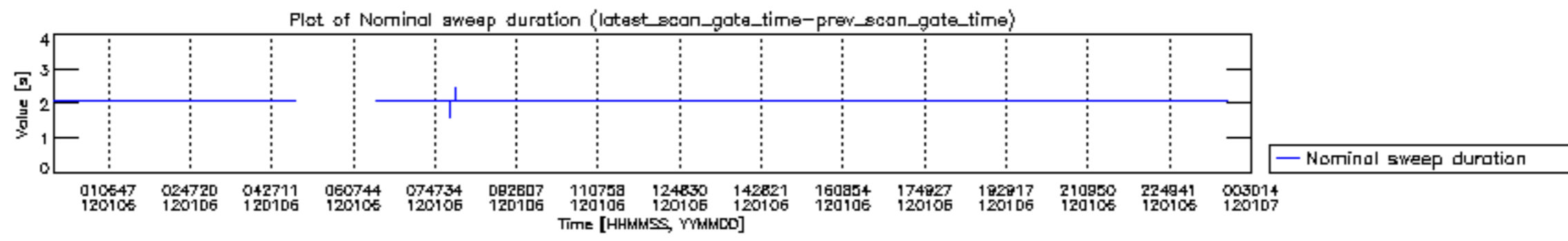
mipas_daily_report_level0_KSPT_L0_4504_N_20120106_13.PNG

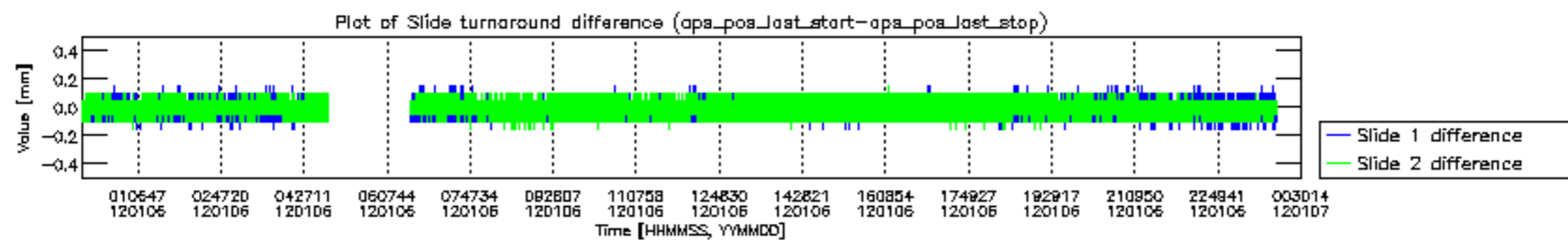


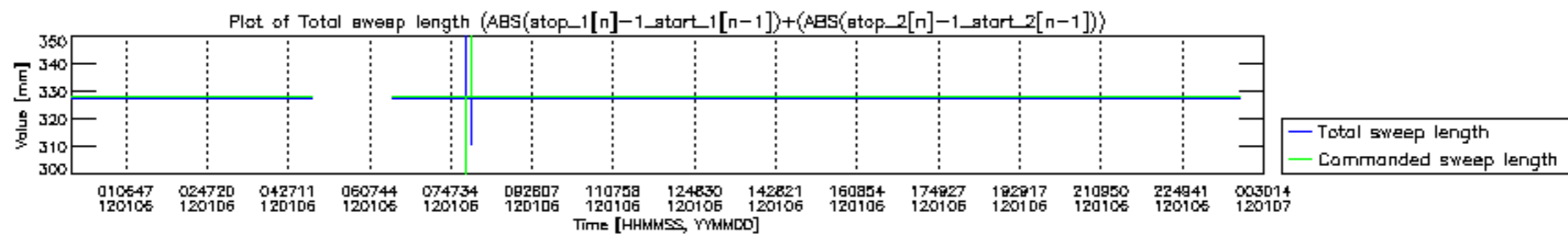


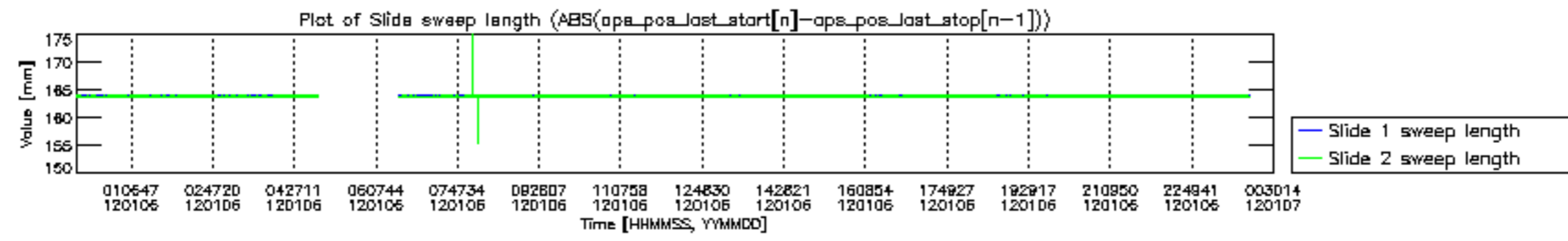


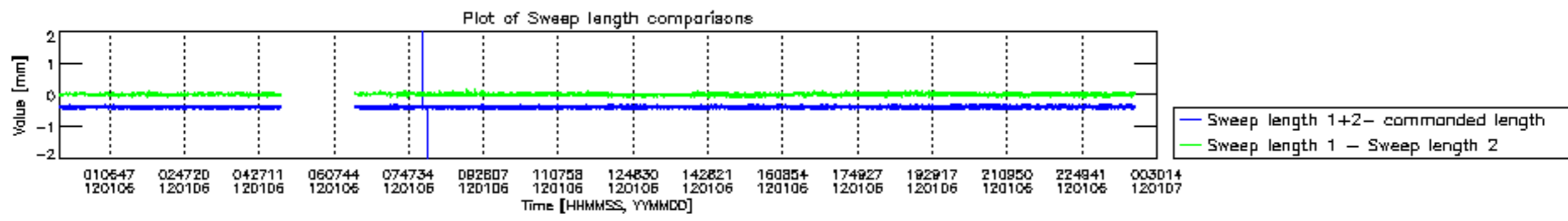


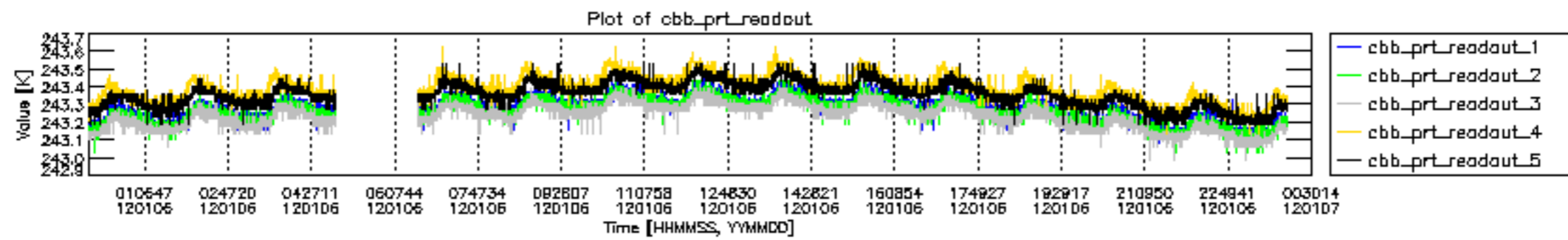


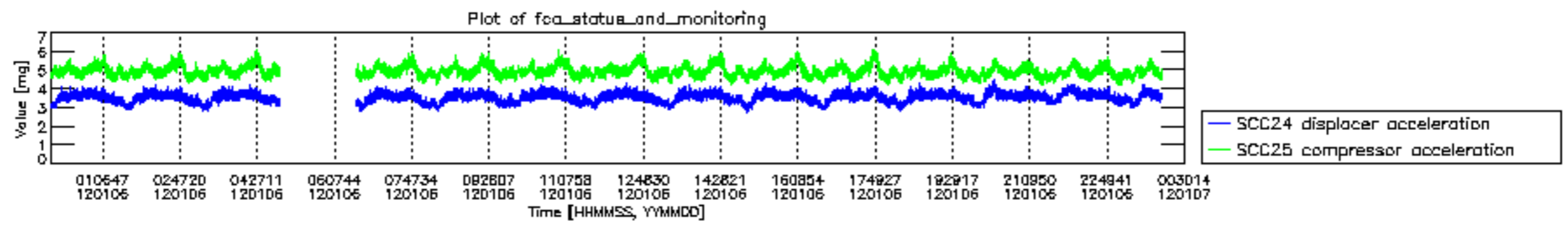












MIPNLOP_MIPSOUPAC_aux_fields_igm_cal, channel statistics plot
 Colour indicates value.

