

0. MIPAS Daily Report for level 0 products

[0.1 General Info](#)

[0.2 Instrument Operational Performance Parameters](#)

[0.3 ADF monitoring](#)

0.1 General Info

This report contains a daily analysis on parameters extracted from MIPAS level 0 data (The MIP_NL__0P product).

0.1.1 Report summary

The table below shows general characteristics of the data that are included into this report.

Item	Value
Report version	v1.6 08-11-2010
Time of report generation	08JAN2012 05:22:24
Data source version	KSPT_L0/4504-N
Processing scope for products	03JAN2012 00:00:00 to 04JAN2012 00:00:00
Start time of first product within scope	03JAN2012 00:34:08
Stop time of last product within scope	04JAN2012 01:36:38
Total number of level 0 products	17
Number of level 0 products with errors	0

0.1.2 Product Quality Indicators per product

The following table shows a summary for each product used in this report.

#	Product name	Start time	Stop time	Prod err	ISP err sign	ISP miss sign	ISP disc sign	rs sign
0	MIP_NL__OPNPDE20120103_003408_000057663110_00174_51481_5265.N1	03JAN2012 00:34:08	03JAN2012 02:10:13	0	0	0	0	0
1	MIP_NL__OPNPDE20120103_020915_000045543110_00175_51482_5266.N1	03JAN2012 02:09:15	03JAN2012 03:25:09	0	0	0	0	0
2	MIP_NL__OPNPDE20120103_032435_000061123110_00176_51483_5267.N1	03JAN2012 03:24:35	03JAN2012 05:06:28	0	0	0	0	0
3	MIP_NL__OPNPDE20120103_050554_000060413110_00177_51484_5268.N1	03JAN2012 05:05:54	03JAN2012 06:46:35	0	0	0	0	0
4	MIP_NL__OPNPDK20120103_064602_000040343110_00178_51485_7969.N1	03JAN2012 06:46:02	03JAN2012 07:53:16	0	0	0	0	0
5	MIP_NL__OPNPDK20120103_075217_000062493110_00179_51486_7970.N1	03JAN2012 07:52:17	03JAN2012 09:36:27	0	0	0	0	0
6	MIP_NL__OPNPDK20120103_093451_000059313110_00180_51487_7971.N1	03JAN2012 09:34:51	03JAN2012 11:13:41	0	0	0	0	0
7	MIP_NL__OPNPDK20120103_111201_000060563110_00181_51488_7972.N1	03JAN2012 11:12:01	03JAN2012 12:52:57	0	0	0	0	0
8	MIP_NL__OPNPDK20120103_125158_000059333110_00182_51489_7973.N1	03JAN2012 12:51:58	03JAN2012 14:30:51	0	0	0	0	0
9	MIP_NL__OPNPDK20120103_143011_000059203110_00183_51490_7974.N1	03JAN2012 14:30:11	03JAN2012 16:08:52	0	0	0	0	0
10	MIP_NL__OPNPDK20120103_160802_000058513110_00184_51491_7975.N1	03JAN2012 16:08:02	03JAN2012 17:45:33	0	0	0	0	0
11	MIP_NL__OPNPDK20120103_174426_000060603110_00185_51492_7976.N1	03JAN2012 17:44:26	03JAN2012 19:25:26	0	0	0	0	0
12	MIP_NL__OPNPDK20120103_192317_000061273110_00186_51493_7977.N1	03JAN2012 19:23:17	03JAN2012 21:05:24	0	0	0	0	0
13	MIP_NL__OPNPDE20120103_210316_000014483110_00187_51494_5269.N1	03JAN2012 21:03:16	03JAN2012 21:27:24	0	0	0	0	0
14	MIP_NL__OPNPDE20120103_212724_000028623110_00187_51494_5270.N1	03JAN2012 21:27:24	03JAN2012 22:15:06	0	0	0	0	0
15	MIP_NL__OPNPDE20120103_221410_000061373110_00187_51494_5271.N1	03JAN2012 22:14:10	03JAN2012 23:56:27	0	0	0	0	0
16	MIP_NL__OPNPDE20120103_235526_000060713110_00188_51495_5272.N1	03JAN2012 23:55:26	04JAN2012 01:36:38	0	0	0	0	0

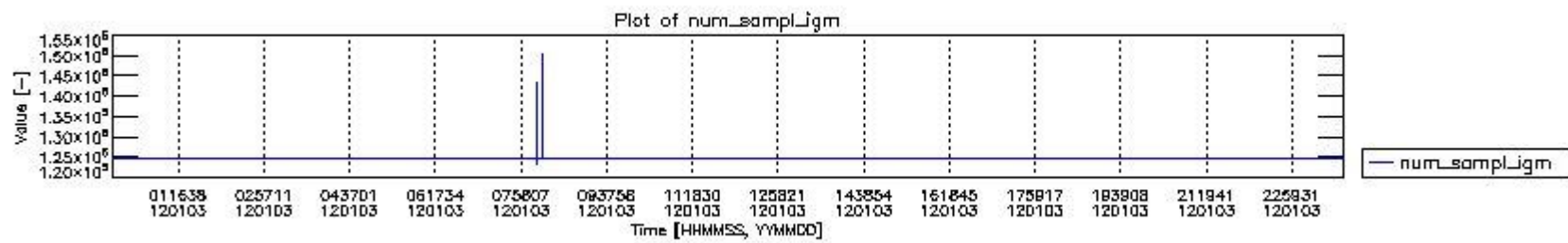
0.2 Instrument Operational Performance Parameters

The following plots give an overview of various instrument parameters for this day. The instrument parameters are part of the auxiliary data field within the source packets of the MIP_NL__0P product. The auxiliary data is normally included twice per interferogram. Note that only the first packet is currently included in monitoring.

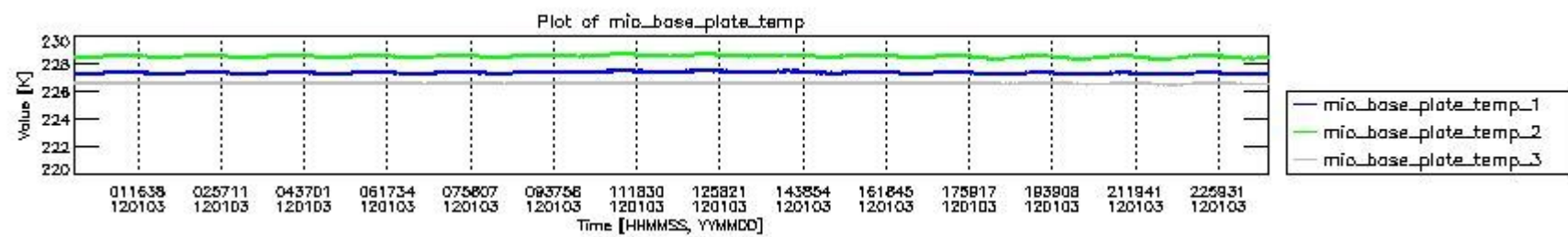
The following table shows the counts of various interferogram number of samples

Number of igm samples	Count [#]	Count [%]
123070	1	0.0024015947

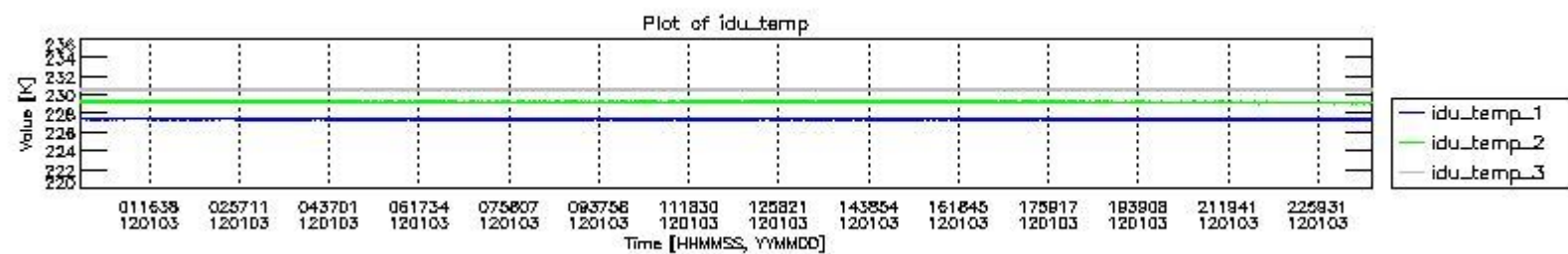
124800	38672	92.874469
124803	2961	7.1111218
127605	1	0.0024015947
141472	1	0.0024015947
143202	1	0.0024015947
147737	1	0.0024015947
150542	1	0.0024015947



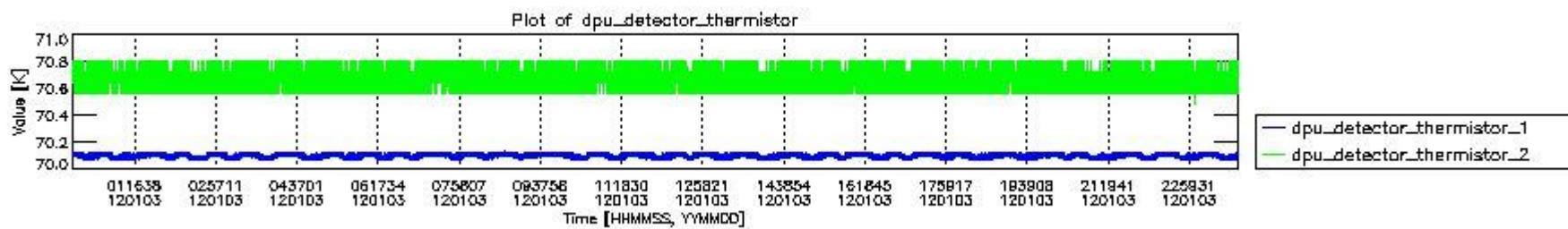
mipas_daily_report_level0_KSPT_L0_4504_N_20120103_0.PNG



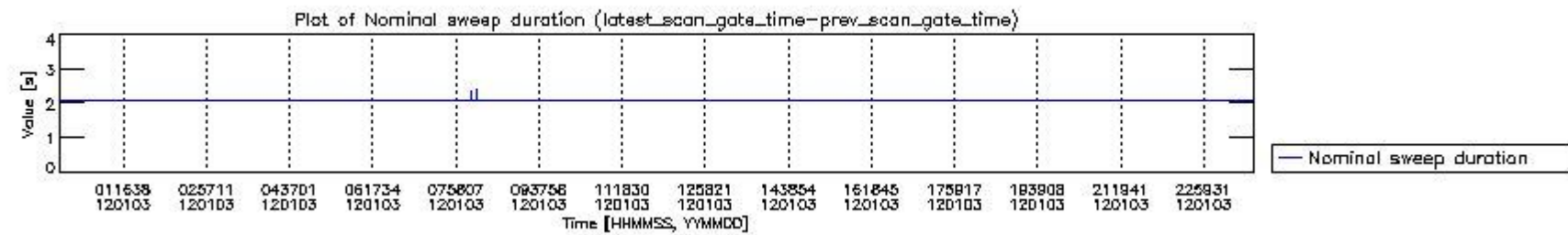
mipas_daily_report_level0_KSPT_L0_4504_N_20120103_1.PNG



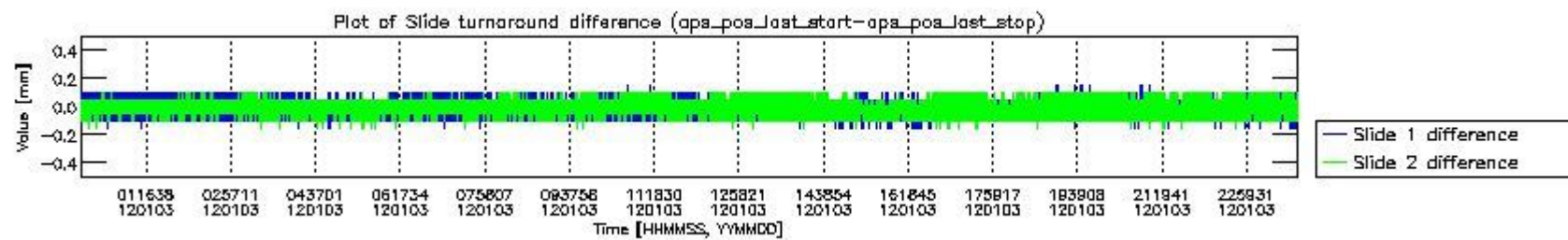
mipas_daily_report_level0_KSPT_L0_4504_N_20120103_2.PNG



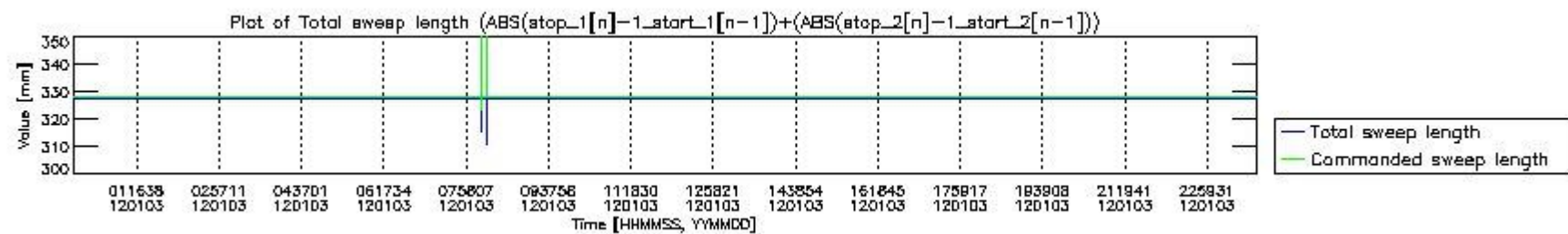
mipas_daily_report_level0_KSPT_L0_4504_N_20120103_3.PNG



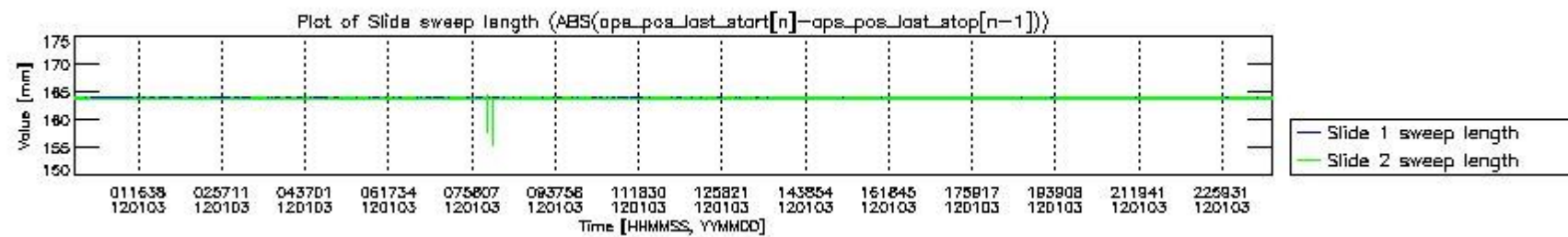
mipas_daily_report_level0_KSPT_L0_4504_N_20120103_4.PNG



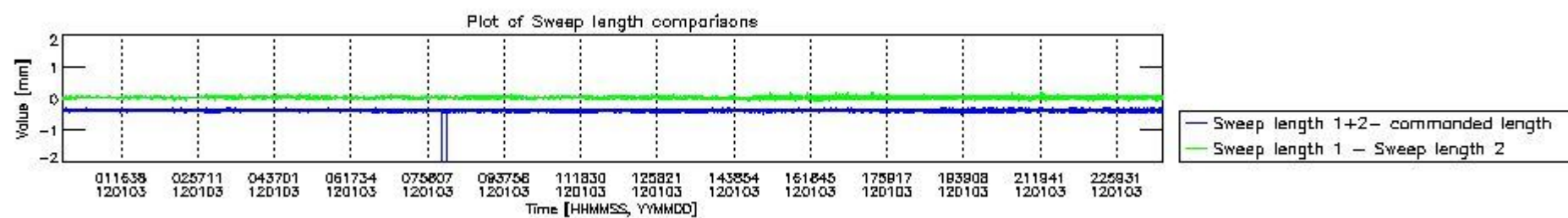
mipas_daily_report_level0_KSPT_L0_4504_N_20120103_5.PNG



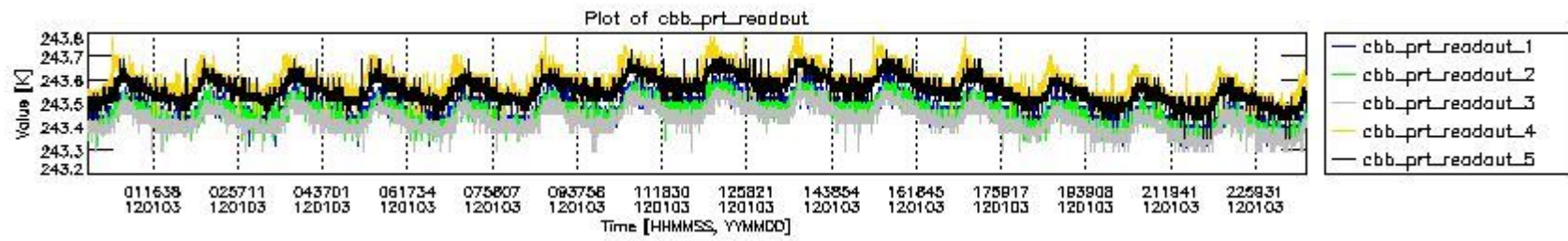
mipas_daily_report_level0_KSPT_L0_4504_N_20120103_6.PNG



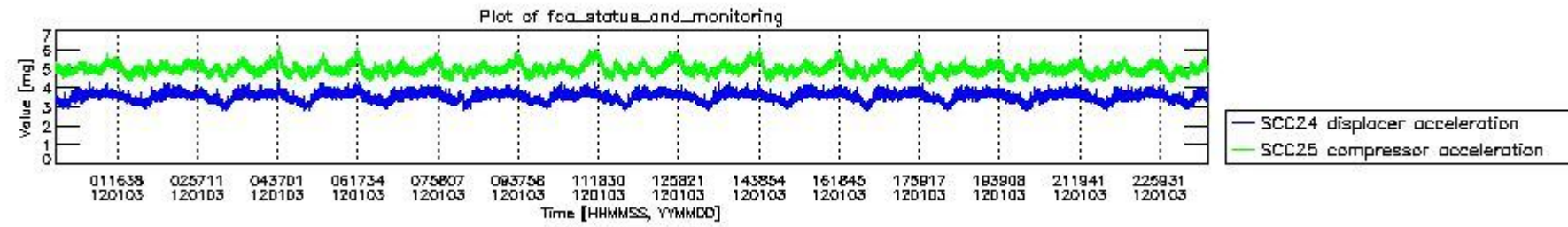
mipas_daily_report_level0_KSPT_L0_4504_N_20120103_7.PNG



mipas_daily_report_level0_KSPT_L0_4504_N_20120103_8.PNG



mipas_daily_report_level0_KSPT_L0_4504_N_20120103_9.PNG

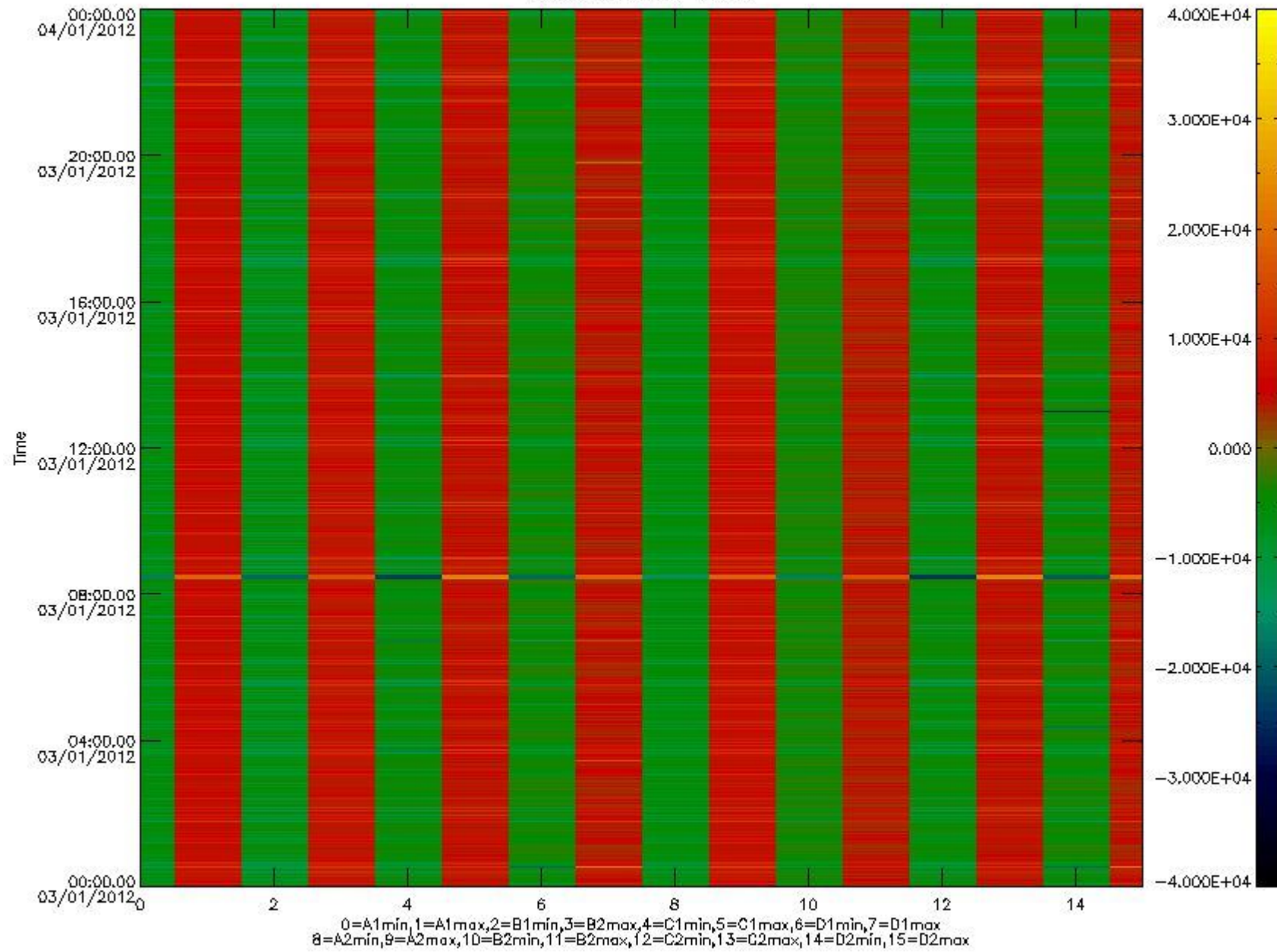


mipas_daily_report_level0_KSPT_L0_4504_N_20120103_10.PNG

The following table shows channel statistics for all channels for this day.

Channel	Min	Max	ADC
A1	-17788	18814	16bit
B1	-19843	17126	16bit
C1	-23720	23582	16bit
D1	-29054	32717	16bit
A2	-15457	19004	16bit
B2	-17639	17362	16bit
C2	-24706	24258	16bit
D2	-32768	31527	16bit

MIPNLOP_MIPSOUPAC_aux_fields_igm_cal, channel statistics plot
Colour indicates value.



mipas_daily_report_level0_KSPT_L0_4504_N_20120103_11.PNG

0.3 ADF monitoring

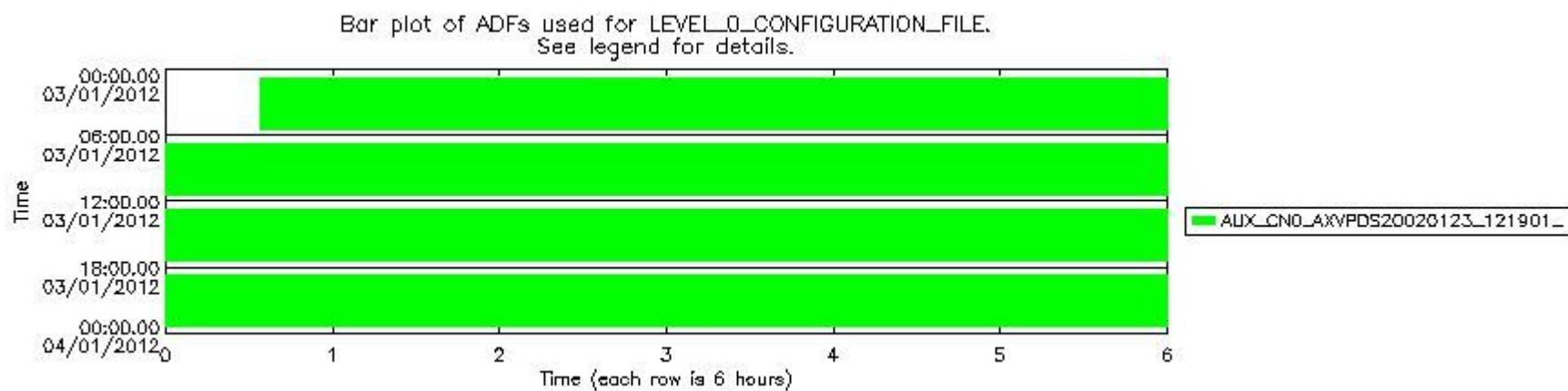
The use of ADFs is shown in two ways:

1. By means of two tables that can be used to find the ADF used for a specific product.
2. By means of plots that show changes in ADF using colours.

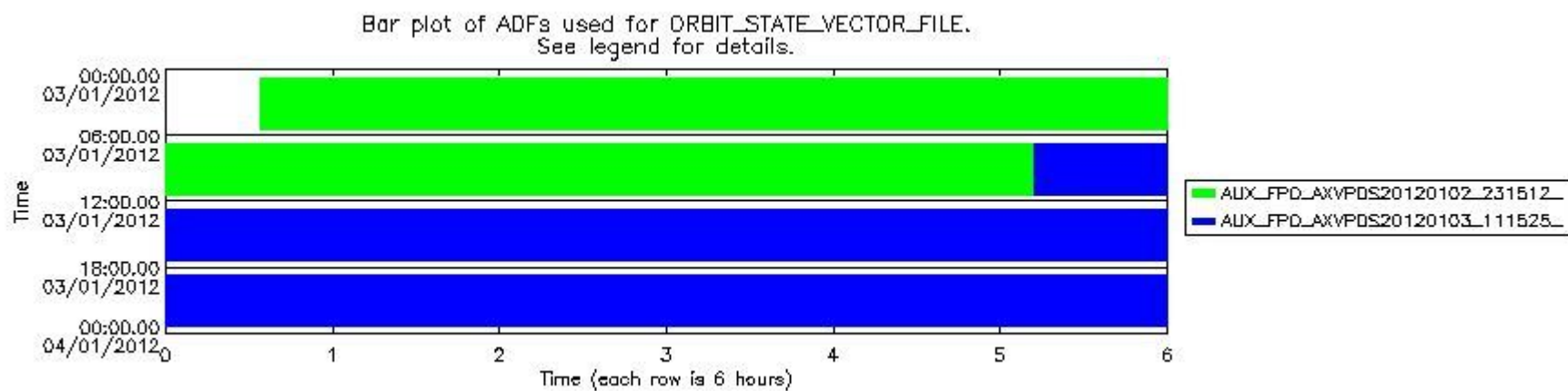
Number	ADF
0	AUX_CN0_AXVPDS20020123_121901_20020101_000000_20200101_000000
1	AUX_FPO_AXVPDS20120102_231512_20120101_184038_20120111_205418
2	AUX_FPO_AXVPDS20120103_111525_20120102_194407_20120112_201733

Number	Product name	#CN0	#FPO
--------	--------------	------	------

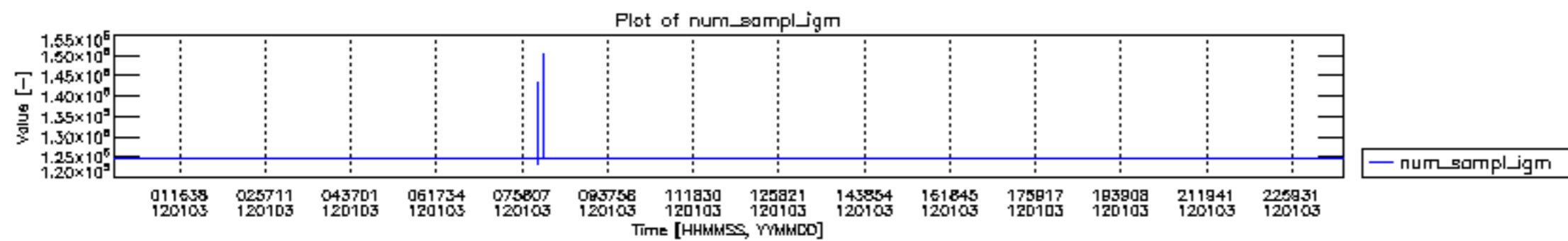
0	MIP_NL__0PNPDE20120103_003408_000057663110_00174_51481_5265.N1	0	1
1	MIP_NL__0PNPDE20120103_020915_000045543110_00175_51482_5266.N1	0	1
2	MIP_NL__0PNPDE20120103_032435_000061123110_00176_51483_5267.N1	0	1
3	MIP_NL__0PNPDE20120103_050554_000060413110_00177_51484_5268.N1	0	1
4	MIP_NL__0PNPDK20120103_064602_000040343110_00178_51485_7969.N1	0	1
5	MIP_NL__0PNPDK20120103_075217_000062493110_00179_51486_7970.N1	0	1
6	MIP_NL__0PNPDK20120103_093451_000059313110_00180_51487_7971.N1	0	1
7	MIP_NL__0PNPDK20120103_111201_000060563110_00181_51488_7972.N1	0	2
8	MIP_NL__0PNPDK20120103_125158_000059333110_00182_51489_7973.N1	0	2
9	MIP_NL__0PNPDK20120103_143011_000059203110_00183_51490_7974.N1	0	2
10	MIP_NL__0PNPDK20120103_160802_000058513110_00184_51491_7975.N1	0	2
11	MIP_NL__0PNPDK20120103_174426_000060603110_00185_51492_7976.N1	0	2
12	MIP_NL__0PNPDK20120103_192317_000061273110_00186_51493_7977.N1	0	2
13	MIP_NL__0PNPDE20120103_210316_000014483110_00187_51494_5269.N1	0	2
14	MIP_NL__0PNPDE20120103_212724_000028623110_00187_51494_5270.N1	0	2
15	MIP_NL__0PNPDE20120103_221410_000061373110_00187_51494_5271.N1	0	2
16	MIP_NL__0PNPDE20120103_235526_000060713110_00188_51495_5272.N1	0	2

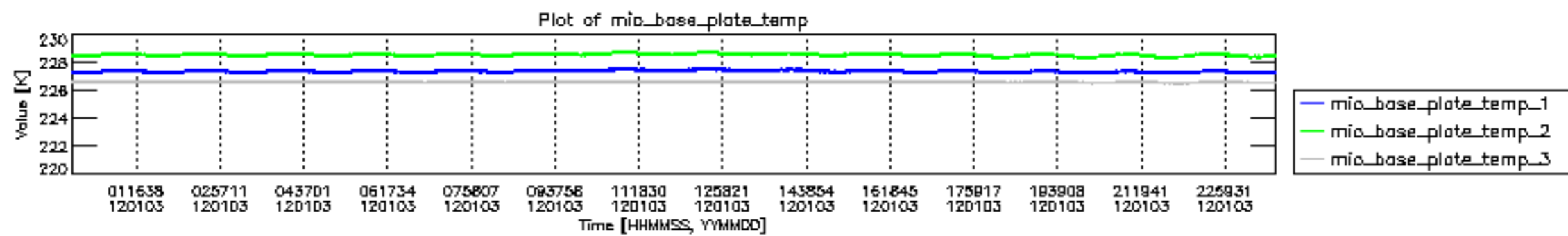


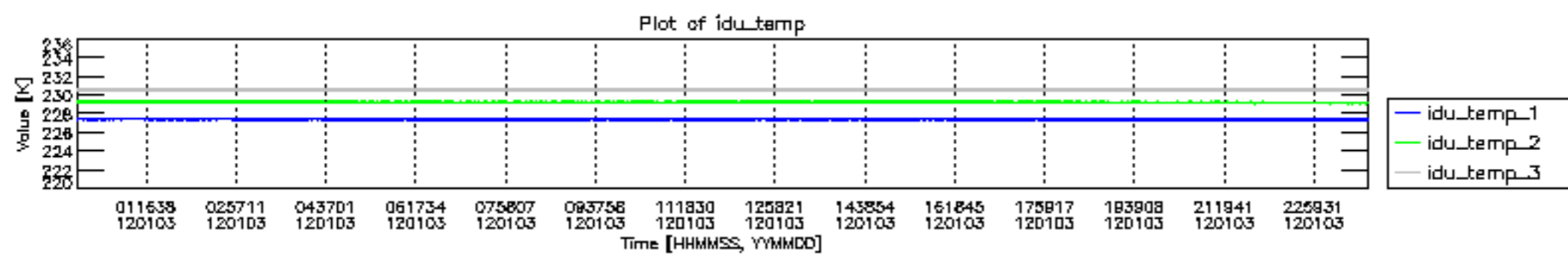
mipas_daily_report_level0_KSPT_L0_4504_N_20120103_12.PNG

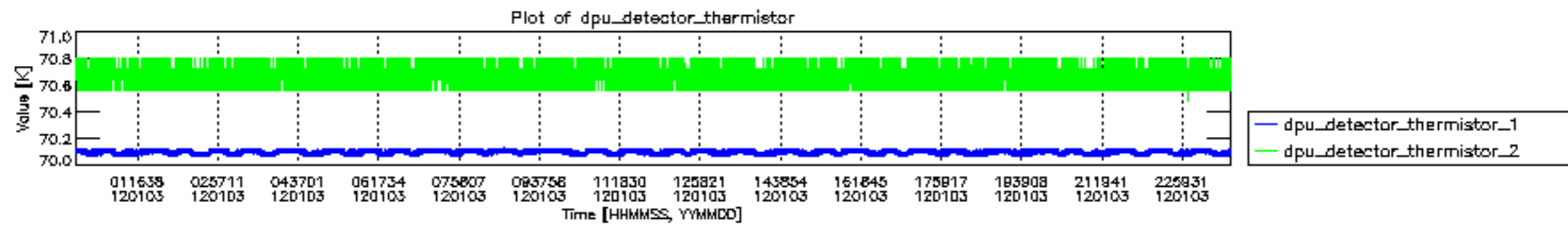


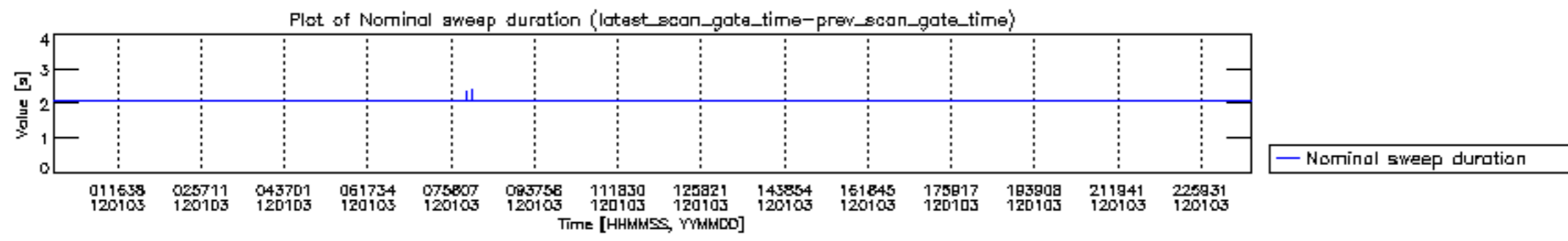
mipas_daily_report_level0_KSPT_L0_4504_N_20120103_13.PNG

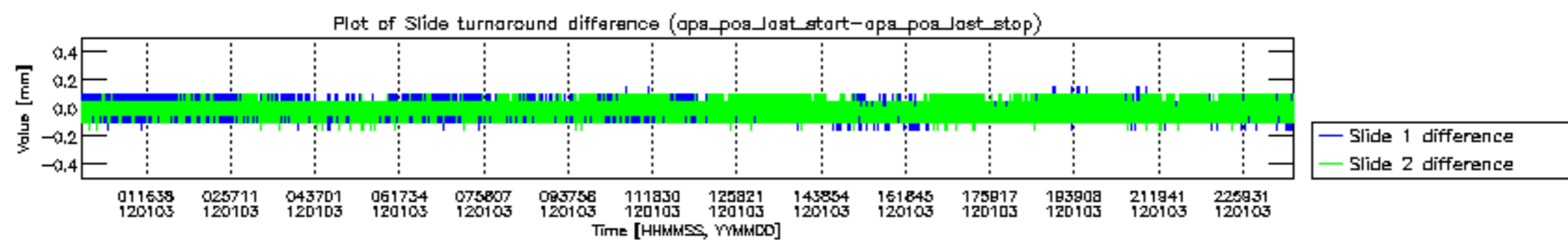


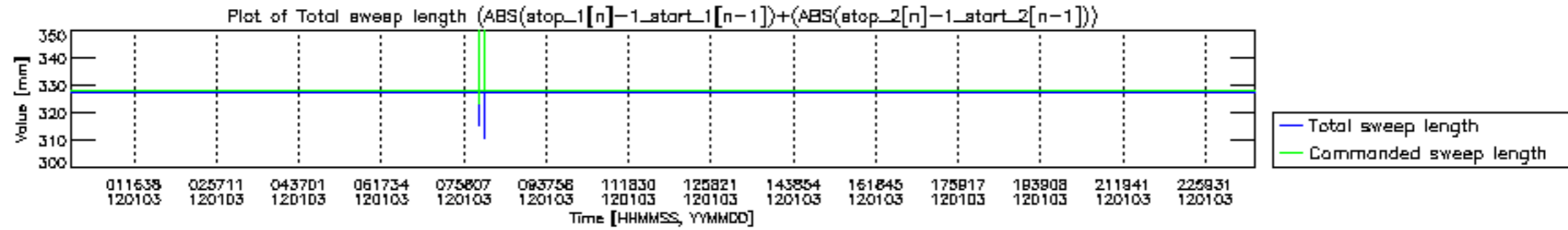


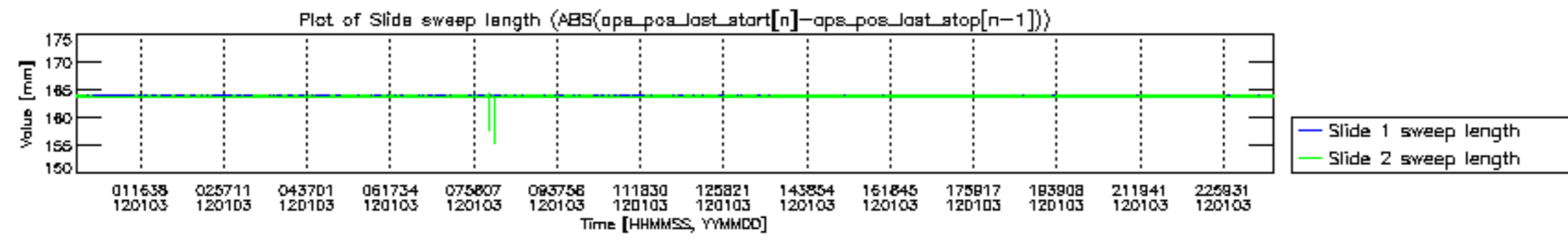


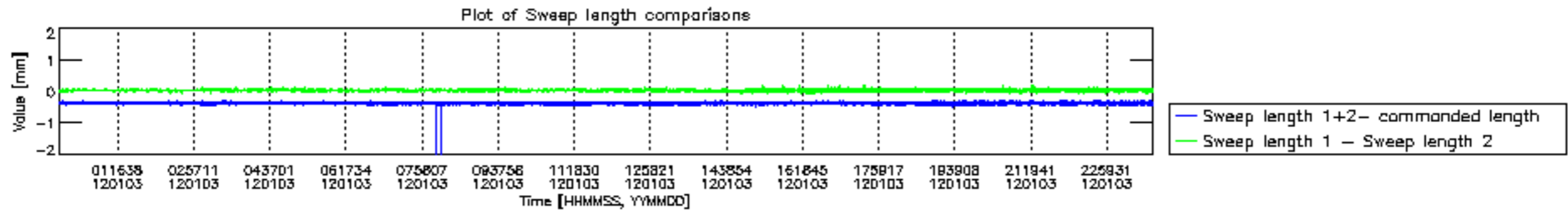


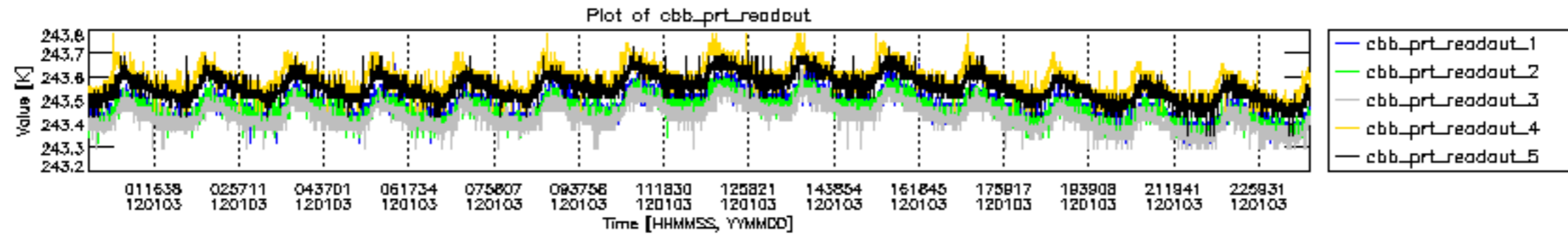


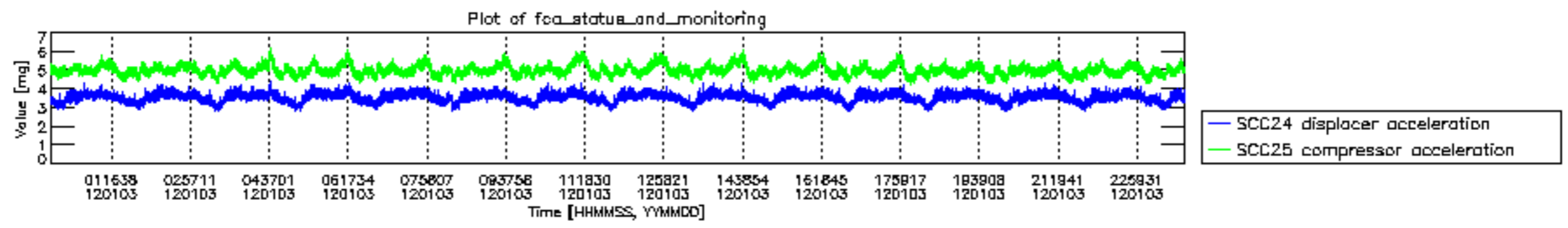




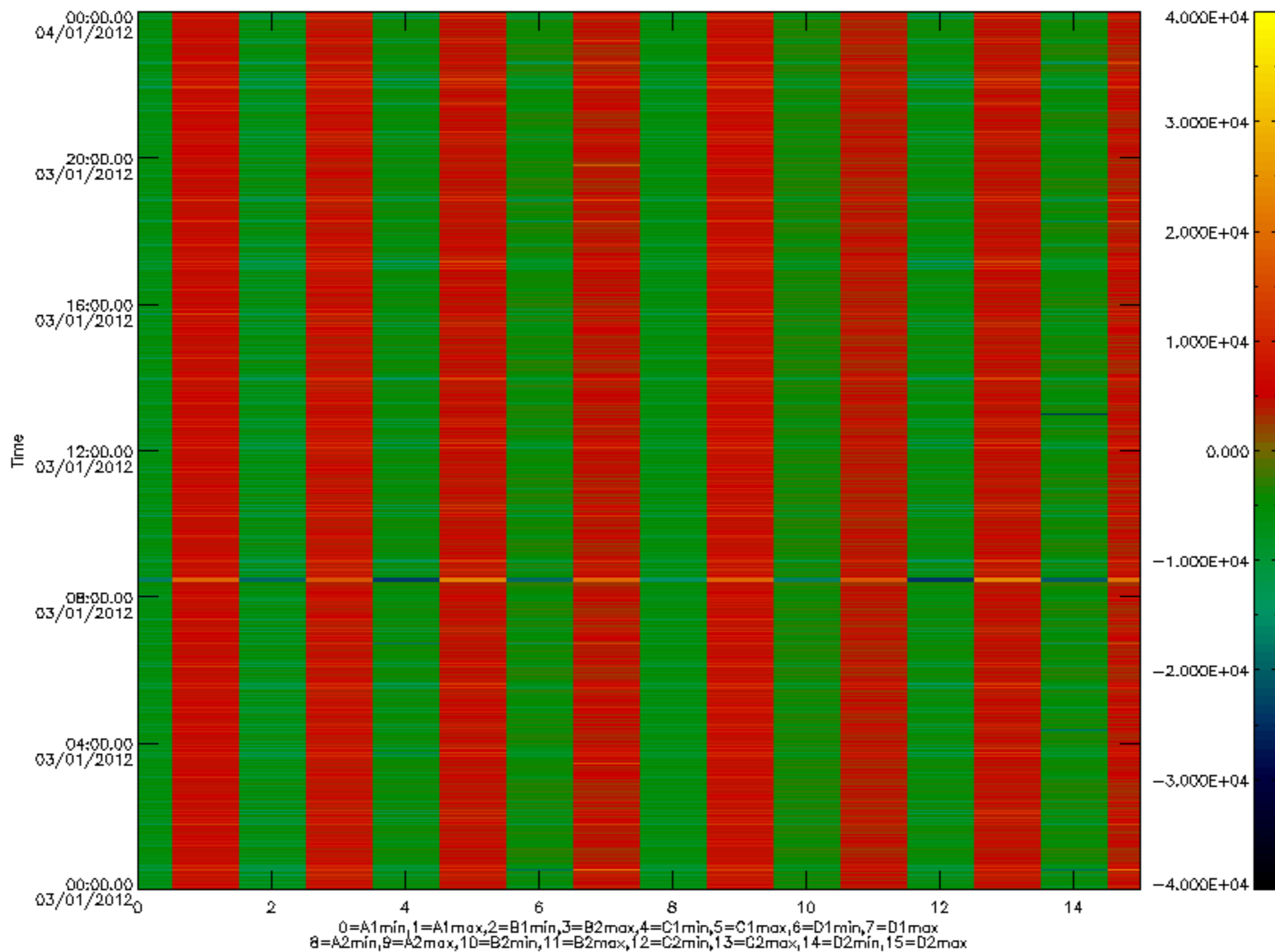


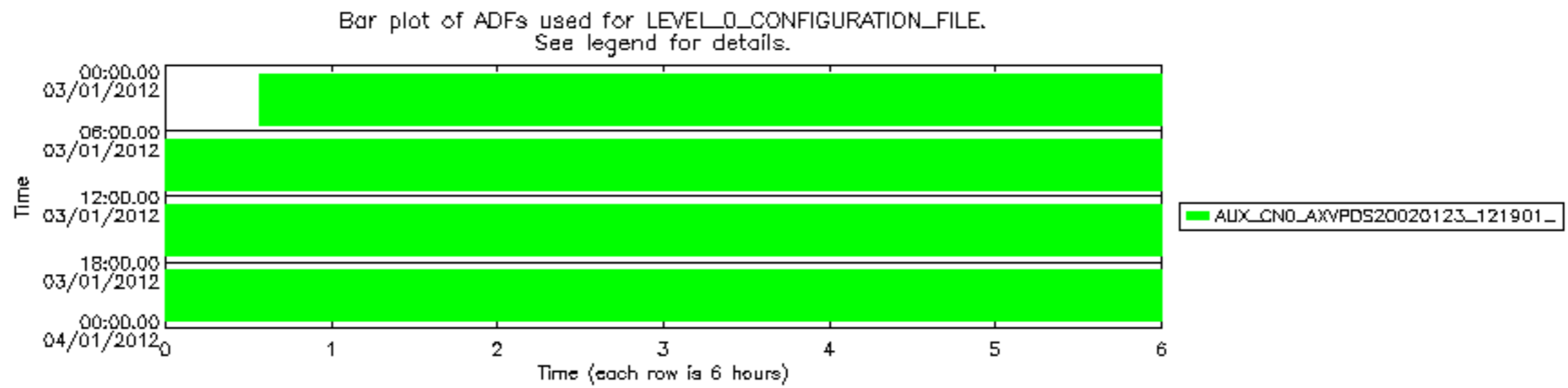






MIPNLOP_MIPSOUPAC_aux_fields_igm_cal, channel statistics plot
 Colour indicates value.





Bar plot of ADFs used for ORBIT_STATE_VECTOR_FILE.
See legend for details.

