

0. MIPAS Daily Report for level 0 products

[0.1 General Info](#)

[0.2 Instrument Operational Performance Parameters](#)

[0.3 ADF monitoring](#)

0.1 General Info

This report contains a daily analysis on parameters extracted from MIPAS level 0 data (The MIP_NL__0P product).

0.1.1 Report summary

The table below shows general characteristics of the data that are included into this report.

Item	Value
Report version	v1.6 08-11-2010
Time of report generation	05JAN2012 05:24:16
Data source version	KSPT_L0/4504-N
Processing scope for products	31DEC2011 00:00:00 to 01JAN2012 00:00:00
Start time of first product within scope	31DEC2011 00:43:33
Stop time of last product within scope	01JAN2012 00:08:01
Total number of level 0 products	14
Number of level 0 products with errors	0

0.1.2 Product Quality Indicators per product

The following table shows a summary for each product used in this report.

#	Product name	Start time	Stop time	Prod err	ISP err sign	ISP miss sign	ISP disc sign	rs sign
0	MIP_NL__0PNPDE20111231_004333_000058563110_00131_51438_5245.N1	31DEC2011 00:43:33	31DEC2011 02:21:09	0	0	0	0	0
1	MIP_NL__0PNPDE20111231_022012_000044323110_00132_51439_5246.N1	31DEC2011 02:20:12	31DEC2011 03:34:04	0	0	0	0	0
2	MIP_NL__0PNPDE20111231_033329_000062213110_00133_51440_5247.N1	31DEC2011 03:33:29	31DEC2011 05:17:10	0	0	0	0	0
3	MIP_NL__0PNPDE20111231_051636_000060203110_00134_51441_5248.N1	31DEC2011 05:16:36	31DEC2011 06:56:57	0	0	0	0	0
4	MIP_NL__0PNPDK20111231_080247_000061473110_00136_51443_7945.N1	31DEC2011 08:02:47	31DEC2011 09:45:14	0	0	0	0	0
5	MIP_NL__0PNPDK20111231_094338_000059683110_00137_51444_7946.N1	31DEC2011 09:43:38	31DEC2011 11:23:06	0	0	0	0	0
6	MIP_NL__0PNPDK20111231_112147_000060813110_00138_51445_7947.N1	31DEC2011 11:21:47	31DEC2011 13:03:08	0	0	0	0	0
7	MIP_NL__0PNPDK20111231_130148_000059333110_00139_51446_7948.N1	31DEC2011 13:01:48	31DEC2011 14:40:41	0	0	0	0	0
8	MIP_NL__0PNPDK20111231_144008_000059223110_00140_51447_7949.N1	31DEC2011 14:40:08	31DEC2011 16:18:50	0	0	0	0	0
9	MIP_NL__0PNPDK20111231_161752_000058933110_00141_51448_7950.N1	31DEC2011 16:17:52	31DEC2011 17:56:05	0	0	0	0	0
10	MIP_NL__0PNPDK20111231_175502_000058433110_00142_51449_7951.N1	31DEC2011 17:55:02	31DEC2011 19:32:25	0	0	0	0	0
11	MIP_NL__0PNPDK20111231_193034_000062483110_00143_51450_7952.N1	31DEC2011 19:30:34	31DEC2011 21:14:42	0	0	0	0	0
12	MIP_NL__0PNPDE20111231_211250_000044083110_00144_51451_5249.N1	31DEC2011 21:12:50	31DEC2011 22:26:17	0	0	0	0	0
13	MIP_NL__0PNPDE20111231_222519_000061633110_00144_51451_5250.N1	31DEC2011 22:25:19	01JAN2012 00:08:01	0	0	0	0	0

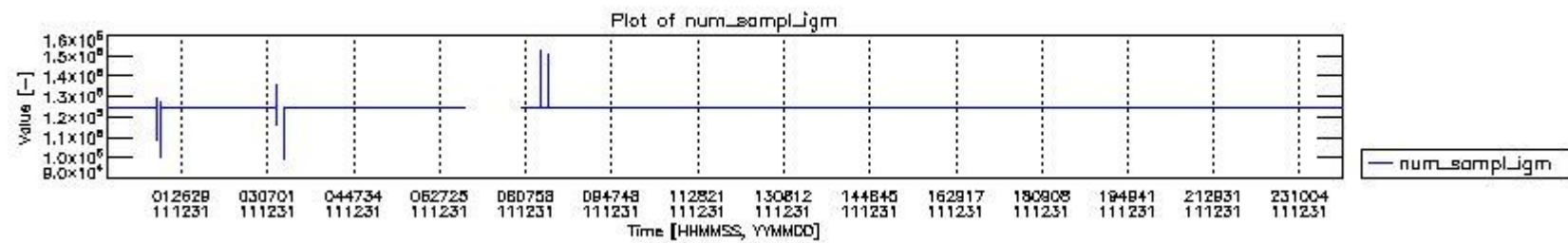
0.2 Instrument Operational Performance Parameters

The following plots give an overview of various instrument parameters for this day. The instrument parameters are part of the auxiliary data field within the source packets of the MIP_NL__0P product. The auxiliary data is normally included twice per interferogram. Note that only the first packet is currently included in monitoring.

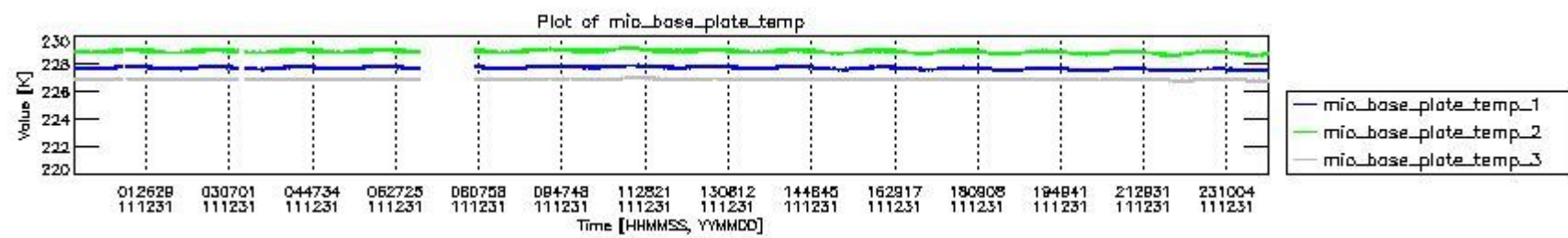
The following table shows the counts of various interferogram number of samples

Number of igm samples	Count [#]	Count [%]
99219	1	0.0025371695
100632	1	0.0025371695
109022	1	0.0025371695
113370	1	0.0025371695

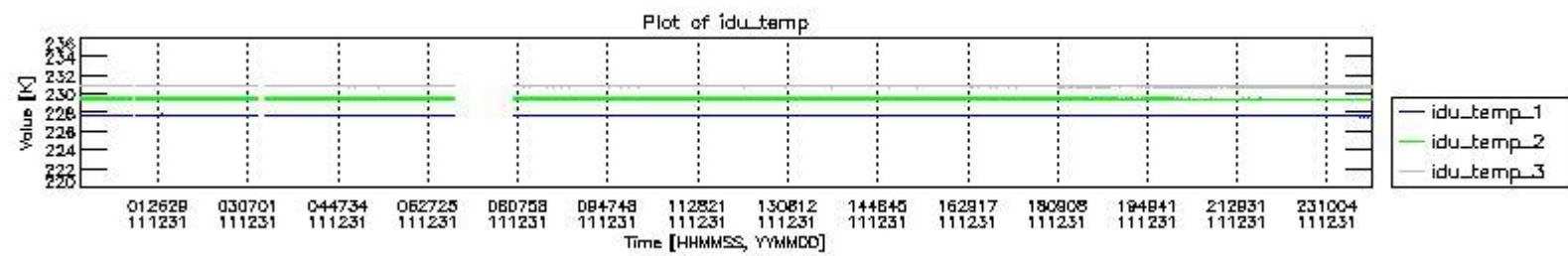
115710	1	0.0025371695
124142	1	0.0025371695
124471	1	0.0025371695
124800	36628	92.931446
124803	2768	7.0228853
125884	1	0.0025371695
126752	1	0.0025371695
126968	1	0.0025371695
127679	1	0.0025371695
128646	1	0.0025371695
129151	1	0.0025371695
135842	1	0.0025371695
147811	1	0.0025371695
148778	1	0.0025371695
150690	1	0.0025371695
152624	1	0.0025371695



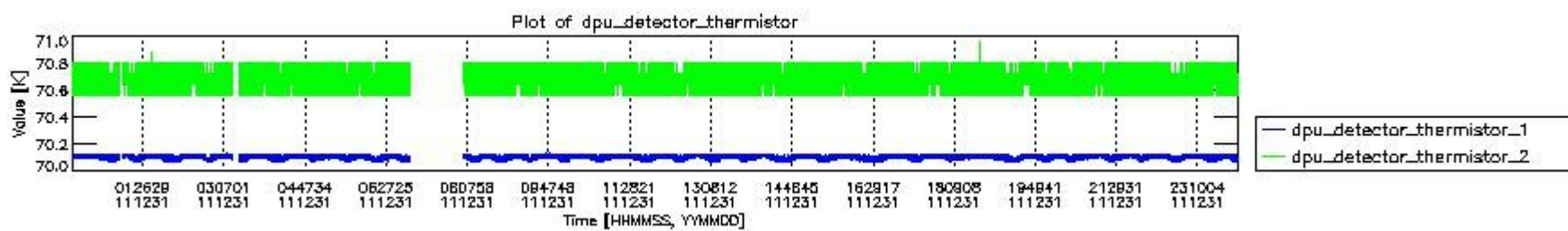
mipas_daily_report_level0_KSPT_L0_4504_N_20111231_0.PNG



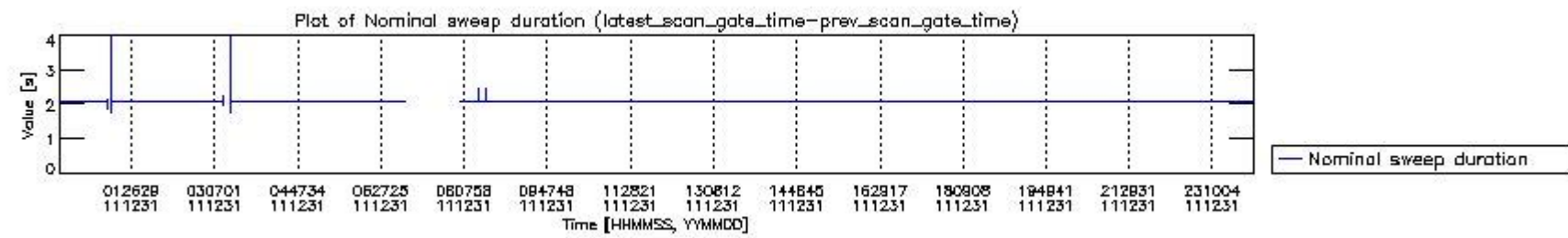
mipas_daily_report_level0_KSPT_L0_4504_N_20111231_1.PNG



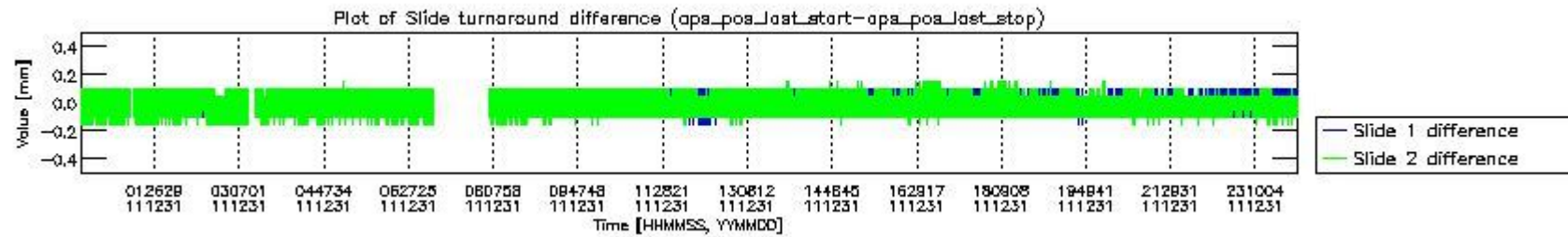
mipas_daily_report_level0_KSPT_L0_4504_N_20111231_2.PNG



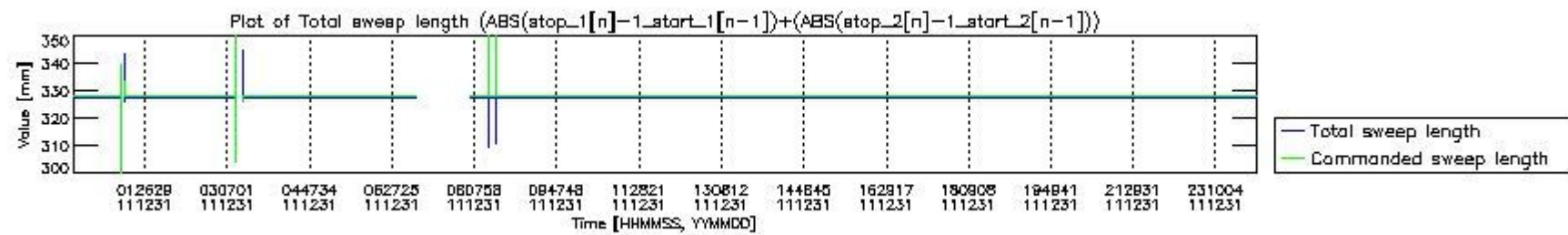
mipas_daily_report_level0_KSPT_L0_4504_N_20111231_3.PNG



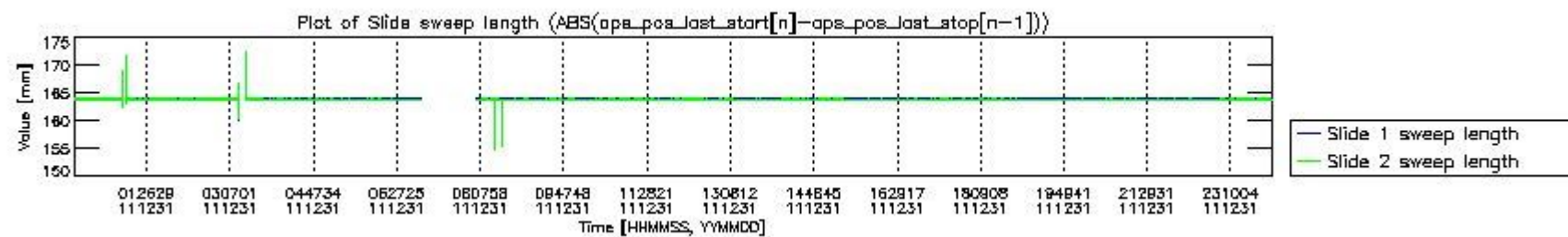
mipas_daily_report_level0_KSPT_L0_4504_N_20111231_4.PNG



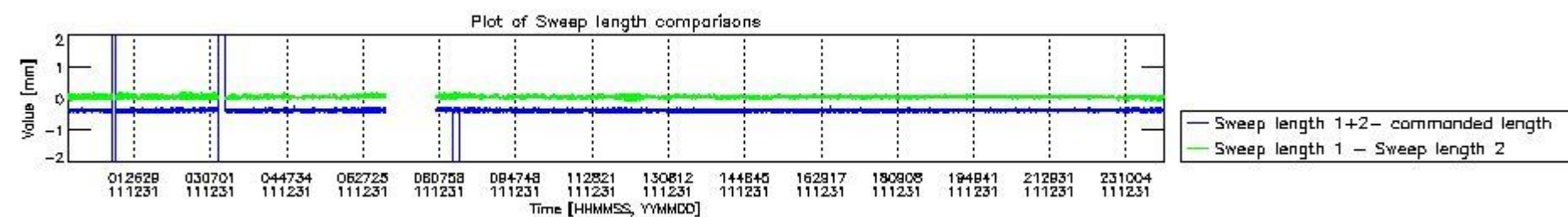
mipas_daily_report_level0_KSPT_L0_4504_N_20111231_5.PNG



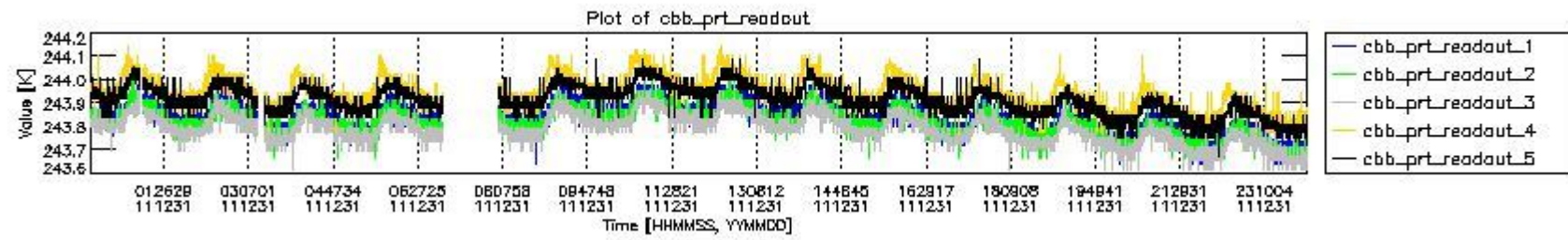
mipas_daily_report_level0_KSPT_L0_4504_N_20111231_6.PNG



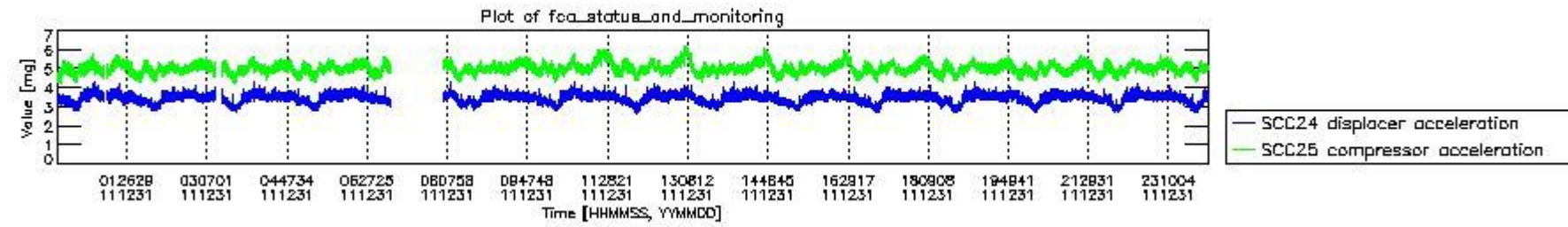
mipas_daily_report_level0_KSPT_L0_4504_N_20111231_7.PNG



mipas_daily_report_level0_KSPT_L0_4504_N_20111231_8.PNG



mipas_daily_report_level0_KSPT_L0_4504_N_20111231_9.PNG

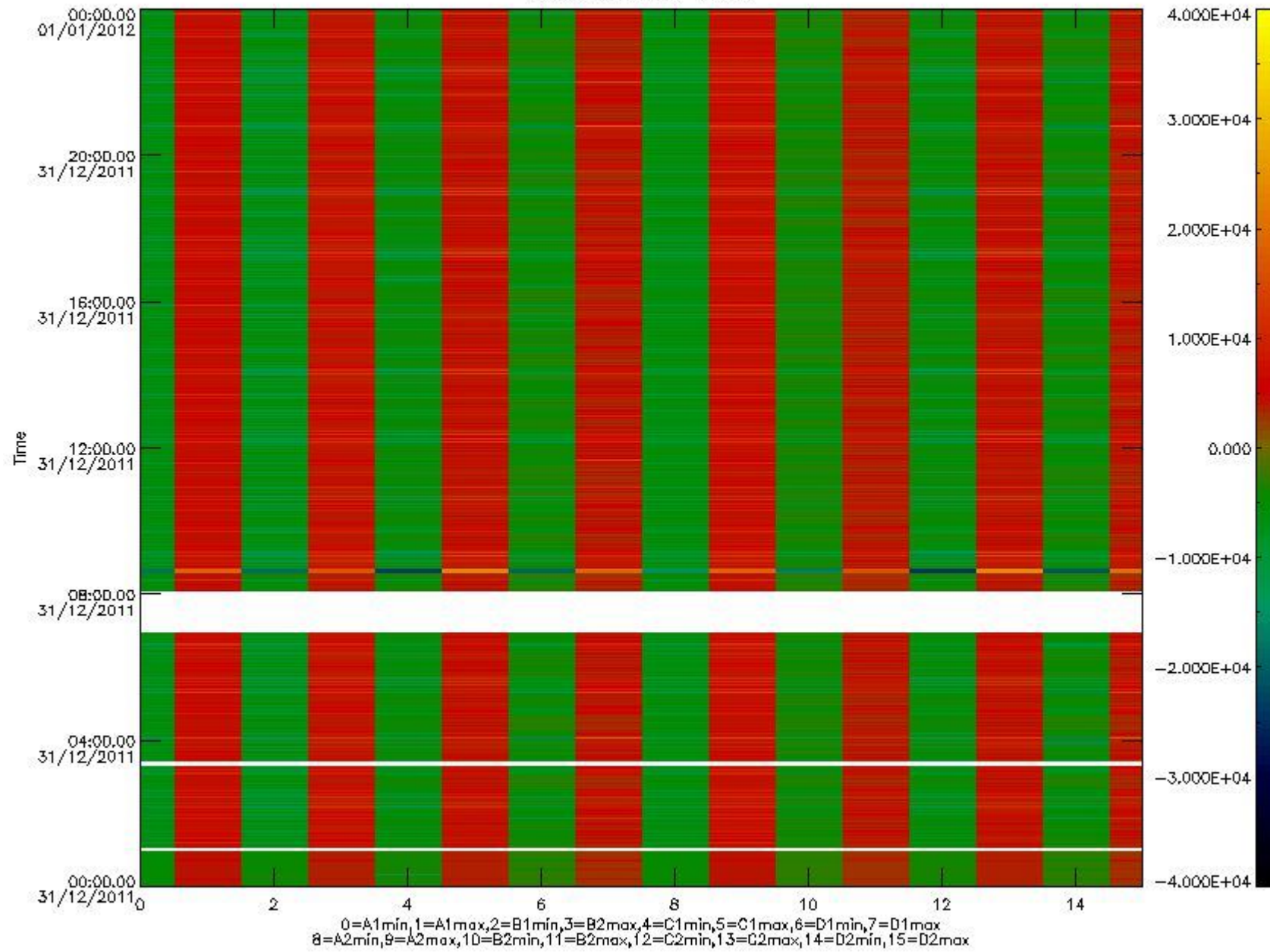


mipas_daily_report_level0_KSPT_L0_4504_N_20111231_10.PNG

The following table shows channel statistics for all channels for this day.

Channel	Min	Max	ADC
A1	-17887	18910	16bit
B1	-20034	17278	16bit
C1	-24065	23973	16bit
D1	-28675	32767	16bit
A2	-15547	19136	16bit
B2	-17867	17566	16bit
C2	-25054	24643	16bit
D2	-32768	31322	16bit

MIPNLOP_MIPSOUPAC_aux_fields_igm_cal, channel statistics plot
Colour indicates value.



mipas_daily_report_level0_KSPT_L0_4504_N_20111231_11.PNG

0.3 ADF monitoring

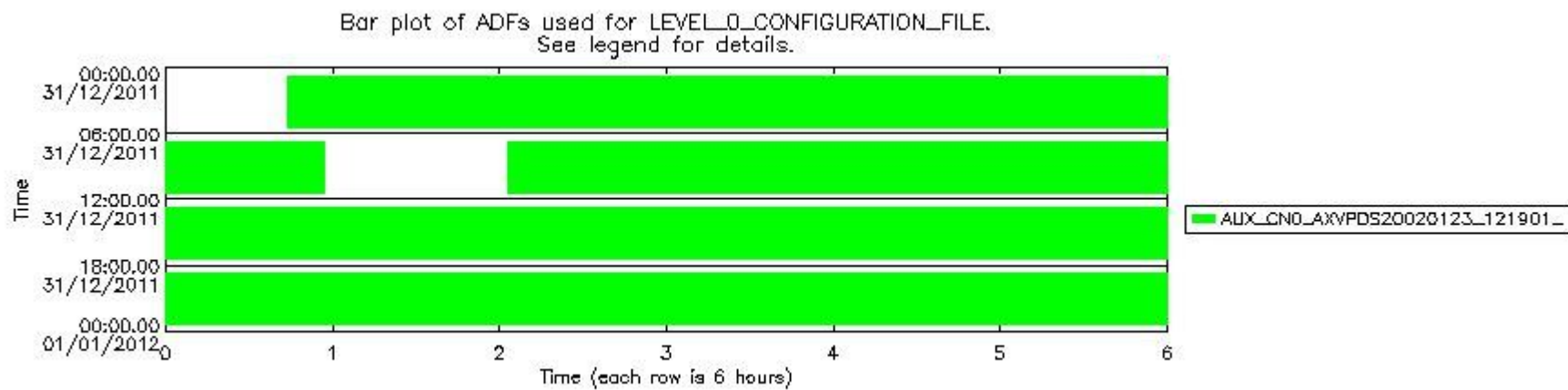
The use of ADFs is shown in two ways:

1. By means of two tables that can be used to find the ADF used for a specific product.
2. By means of plots that show changes in ADF using colours.

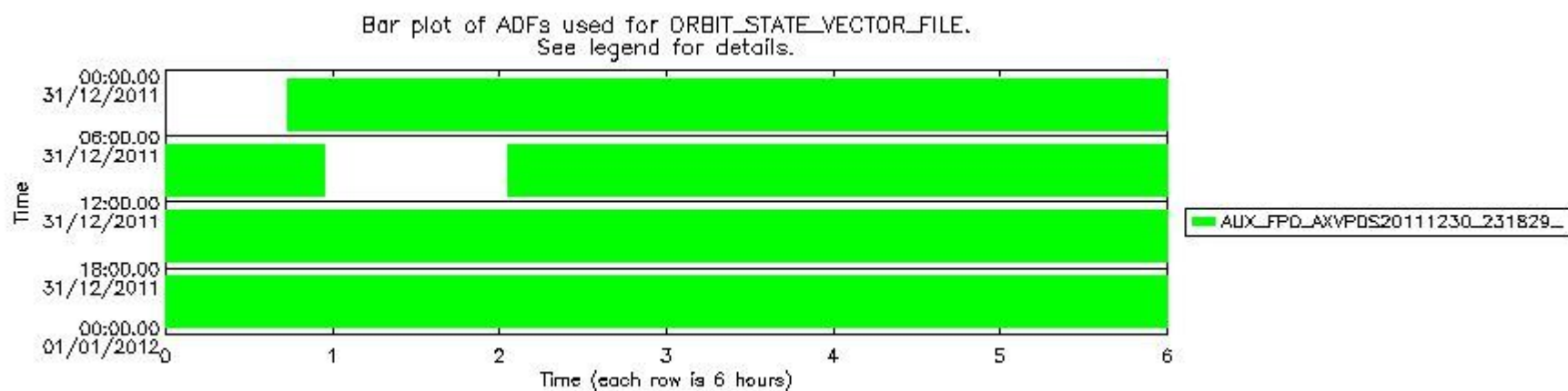
Number	ADF
0	AUX_CN0_AXVPDS20020123_121901_20020101_000000_20200101_000000
1	AUX_FPO_AXVPDS20111230_231829_20111230_195408_20120109_202734

Number	Product name	#CN0	#FPO
0	MIP_NL_0PNPDE20111231_004333_000058563110_00131_51438_5245.N1	0	1

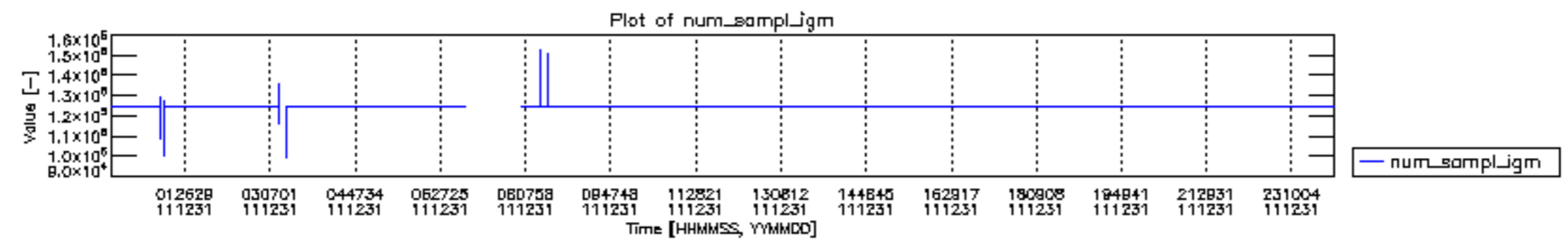
1	MIP_NL__0PNPDE20111231_022012_000044323110_00132_51439_5246.N1	0	1
2	MIP_NL__0PNPDE20111231_033329_000062213110_00133_51440_5247.N1	0	1
3	MIP_NL__0PNPDE20111231_051636_000060203110_00134_51441_5248.N1	0	1
4	MIP_NL__0PNPDK20111231_080247_000061473110_00136_51443_7945.N1	0	1
5	MIP_NL__0PNPDK20111231_094338_000059683110_00137_51444_7946.N1	0	1
6	MIP_NL__0PNPDK20111231_112147_000060813110_00138_51445_7947.N1	0	1
7	MIP_NL__0PNPDK20111231_130148_000059333110_00139_51446_7948.N1	0	1
8	MIP_NL__0PNPDK20111231_144008_000059223110_00140_51447_7949.N1	0	1
9	MIP_NL__0PNPDK20111231_161752_000058933110_00141_51448_7950.N1	0	1
10	MIP_NL__0PNPDK20111231_175502_000058433110_00142_51449_7951.N1	0	1
11	MIP_NL__0PNPDK20111231_193034_000062483110_00143_51450_7952.N1	0	1
12	MIP_NL__0PNPDE20111231_211250_000044083110_00144_51451_5249.N1	0	1
13	MIP_NL__0PNPDE20111231_222519_000061633110_00144_51451_5250.N1	0	1

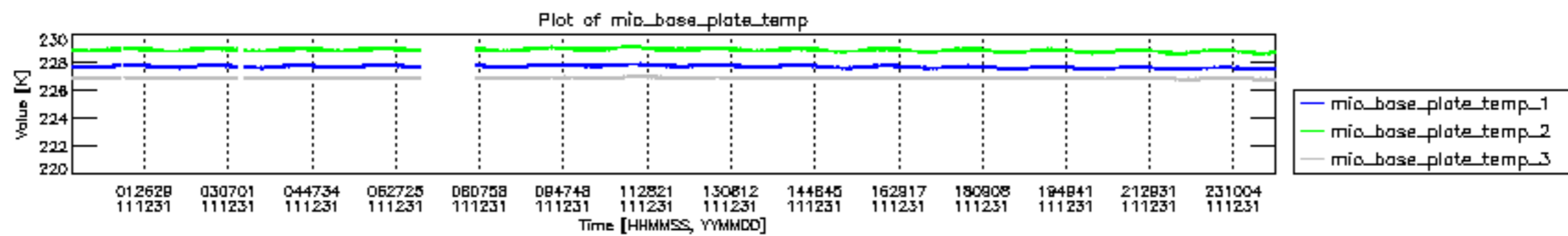


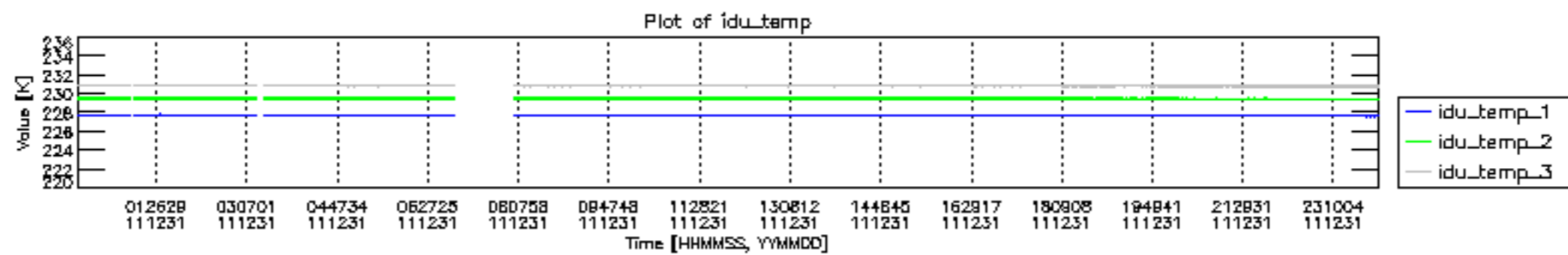
mipas_daily_report_level0_KSPT_L0_4504_N_20111231_12.PNG

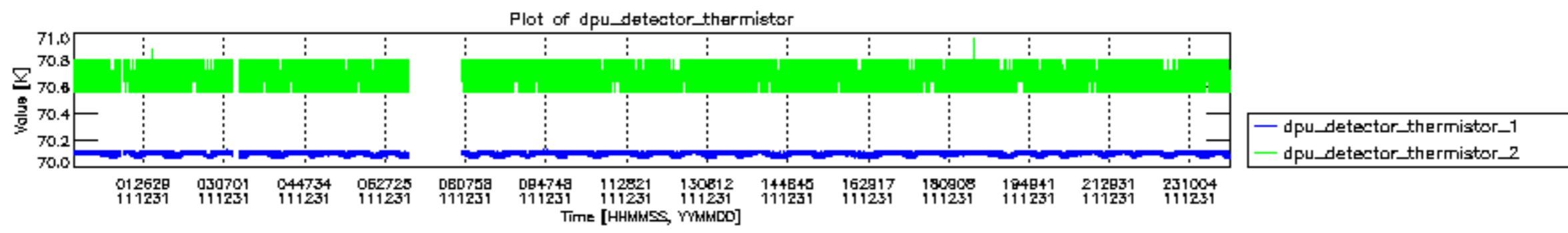


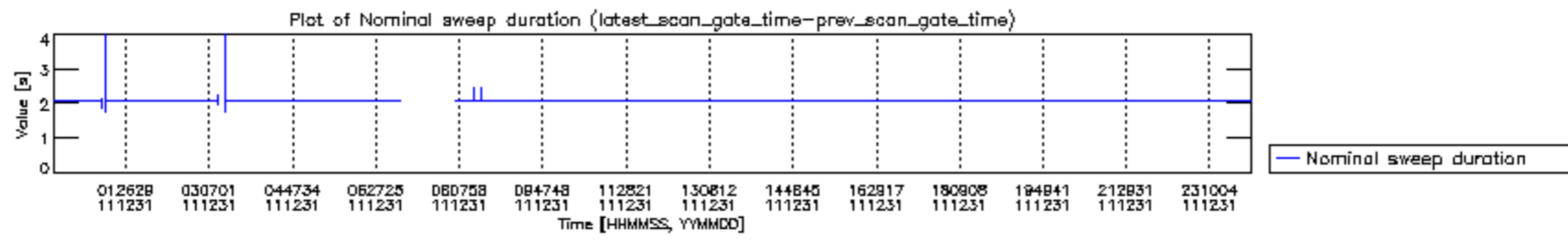
mipas_daily_report_level0_KSPT_L0_4504_N_20111231_13.PNG

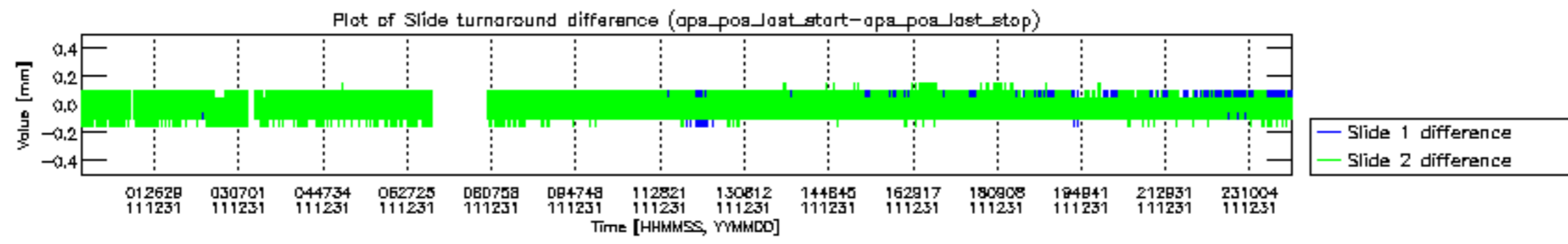


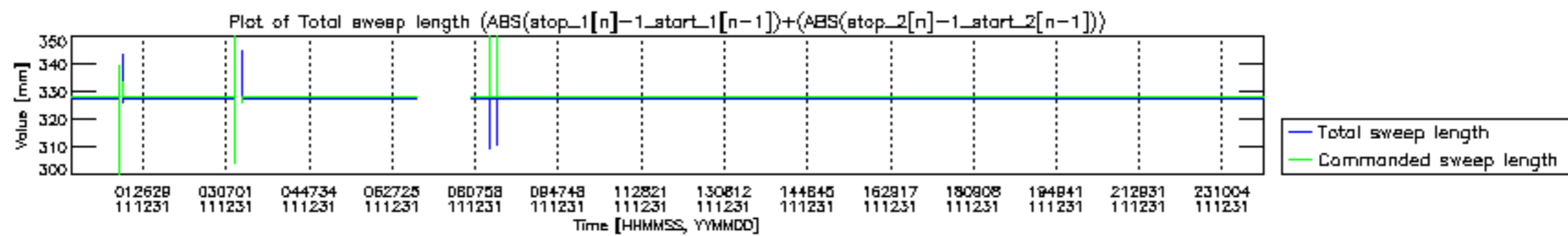


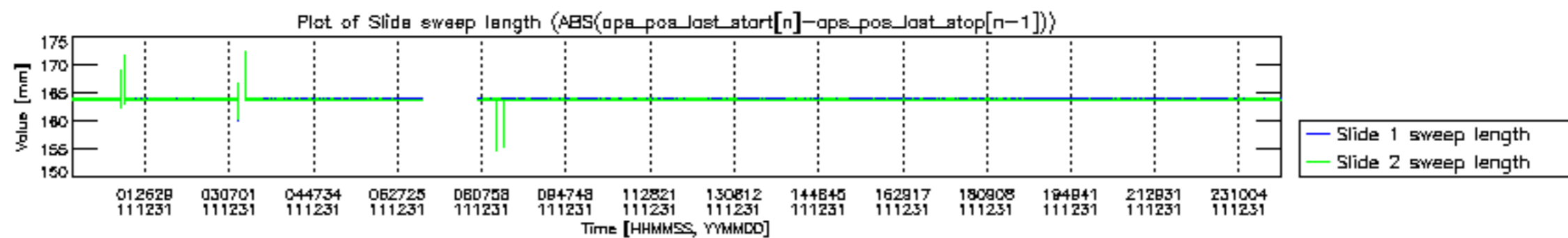


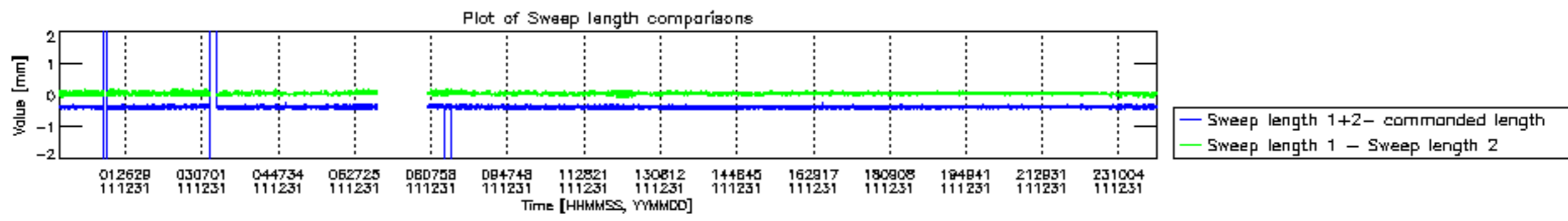


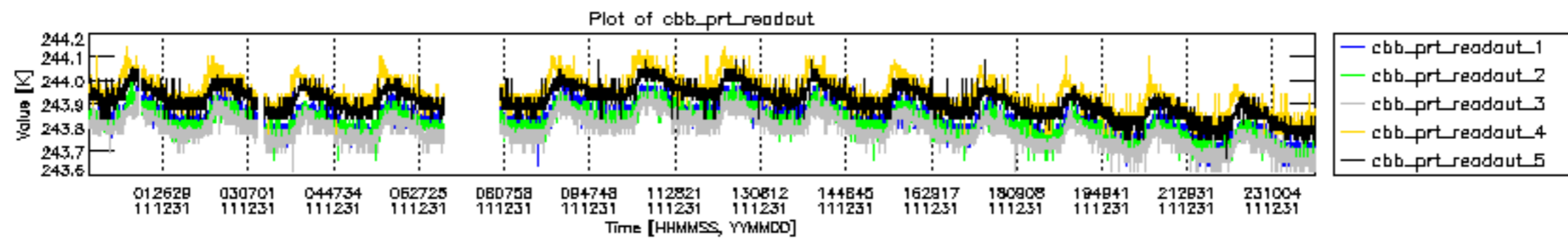


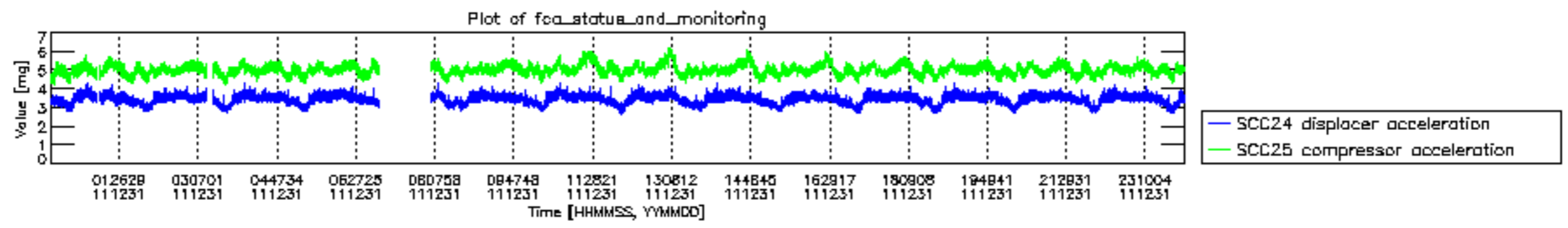












MIPNLOP_MIPSOUPAC_aux_fields_igm_cal, channel statistics plot
 Colour indicates value.

