

0. MIPAS Daily Report for level 0 products

[0.1 General Info](#)

[0.2 Instrument Operational Performance Parameters](#)

[0.3 ADF monitoring](#)

0.1 General Info

This report contains a daily analysis on parameters extracted from MIPAS level 0 data (The MIP_NL__0P product).

0.1.1 Report summary

The table below shows general characteristics of the data that are included into this report.

Item	Value
Report version	v1.6 08-11-2010
Time of report generation	03JAN2012 05:24:17
Data source version	KSPT_L0/4504-N
Processing scope for products	29DEC2011 00:00:00 to 30DEC2011 00:00:00
Start time of first product within scope	29DEC2011 00:16:35
Stop time of last product within scope	30DEC2011 01:20:11
Total number of level 0 products	16
Number of level 0 products with errors	0

0.1.2 Product Quality Indicators per product

The following table shows a summary for each product used in this report.

#	Product name	Start time	Stop time	Prod err	ISP err sign	ISP miss sign	ISP disc sign	rs sign
0	MIP_NL__0PNPDE20111229_001635_000059483110_00102_51409_5232.N1	29DEC2011 00:16:35	29DEC2011 01:55:43	0	0	0	0	0
1	MIP_NL__0PNPDE20111229_015446_000043993110_00103_51410_5233.N1	29DEC2011 01:54:46	29DEC2011 03:08:05	0	0	0	0	0
2	MIP_NL__0PNPDE20111229_030732_000061733110_00104_51411_5234.N1	29DEC2011 03:07:32	29DEC2011 04:50:25	0	0	0	0	0
3	MIP_NL__0PNPDE20111229_044951_000059933110_00105_51412_5235.N1	29DEC2011 04:49:51	29DEC2011 06:29:44	0	0	0	0	0
4	MIP_NL__0PNPDK20111229_062911_000041533110_00106_51413_7926.N1	29DEC2011 06:29:11	29DEC2011 07:38:24	0	0	0	0	0
5	MIP_NL__0PNPDK20111229_073725_000060733110_00107_51414_7927.N1	29DEC2011 07:37:25	29DEC2011 09:18:38	0	0	0	0	0
6	MIP_NL__0PNPDK20111229_091659_000060103110_00108_51415_7928.N1	29DEC2011 09:16:59	29DEC2011 10:57:09	0	0	0	0	0
7	MIP_NL__0PNPDK20111229_105533_000048983110_00109_51416_7929.N1	29DEC2011 10:55:33	29DEC2011 12:17:11	0	0	0	0	0
8	MIP_NL__0PNPDK20111229_121711_000012513110_00110_51417_7930.N1	29DEC2011 12:17:11	29DEC2011 12:38:03	0	0	0	0	0
9	MIP_NL__0PNPDK20111229_123622_000059663110_00110_51417_7931.N1	29DEC2011 12:36:22	29DEC2011 14:15:48	0	0	0	0	0
10	MIP_NL__0PNPDK20111229_141450_000058743110_00111_51418_7932.N1	29DEC2011 14:14:50	29DEC2011 15:52:44	0	0	0	0	0
11	MIP_NL__0PNPDK20111229_172814_000058643110_00113_51420_7934.N1	29DEC2011 17:28:14	29DEC2011 19:05:58	0	0	0	0	0
12	MIP_NL__0PNPDK20111229_190455_000060893110_00114_51421_7935.N1	29DEC2011 19:04:55	29DEC2011 20:46:25	0	0	0	0	0
13	MIP_NL__0PNPDE20111229_204453_000044913110_00115_51422_5236.N1	29DEC2011 20:44:53	29DEC2011 21:59:44	0	0	0	0	0
14	MIP_NL__0PNPDE20111229_215848_000061083110_00115_51422_5237.N1	29DEC2011 21:58:48	29DEC2011 23:40:36	0	0	0	0	0
15	MIP_NL__0PNPDE20111229_233931_000060403110_00116_51423_5238.N1	29DEC2011 23:39:31	30DEC2011 01:20:11	0	0	0	0	0

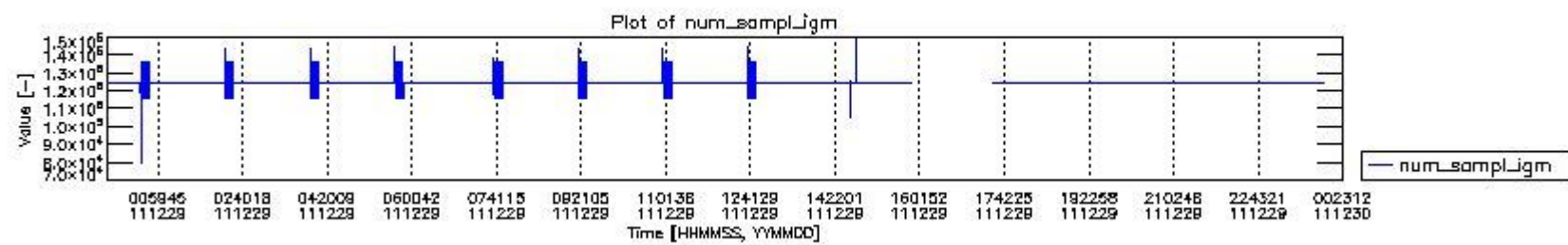
0.2 Instrument Operational Performance Parameters

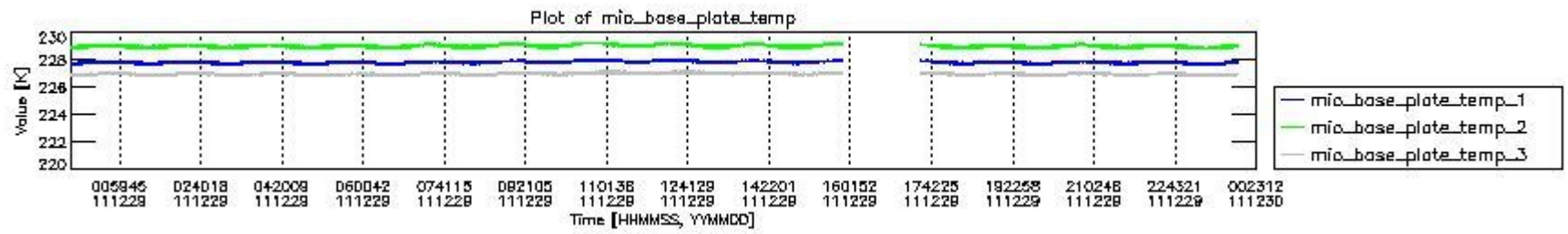
The following plots give an overview of various instrument parameters for this day. The instrument parameters are part of the auxiliary data field within the source packets of the MIP_NL__0P product. The auxiliary data is normally included twice per interferogram. Note that only the first packet is currently included in monitoring.

The following table shows the counts of various interferogram number of samples

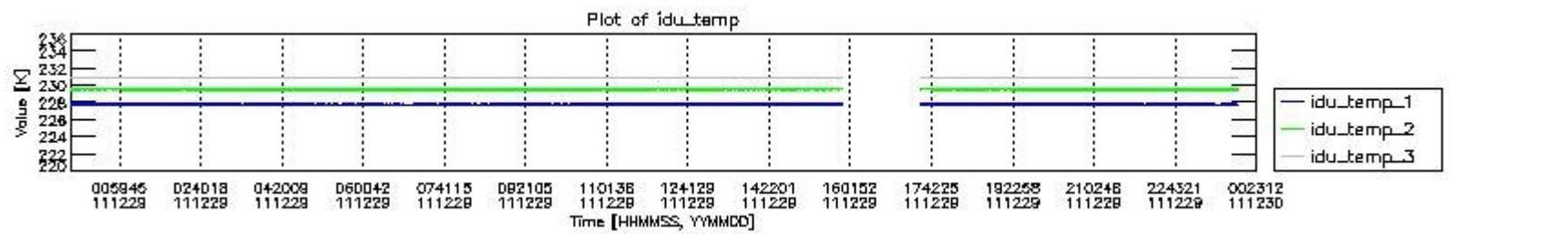
Number of igm samples	Count [#]	Count [%]
79174	1	0.0025738038
91921	1	0.0025738038

105154	1	0.0025738038
105640	1	0.0025738038
112053	1	0.0025738038
115933	1	0.0025738038
116008	16	0.041180861
116082	76	0.19560909
116156	41	0.10552596
116231	6	0.015442823
116305	4	0.010295215
118312	1	0.0025738038
123144	1	0.0025738038
123591	1	0.0025738038
123665	2	0.0051476076
123962	1	0.0025738038
124483	1	0.0025738038
124631	1	0.0025738038
124800	35774	92.075258
124803	2614	6.7279232
125286	1	0.0025738038
127159	1	0.0025738038
127198	1	0.0025738038
127348	16	0.041180861
127496	76	0.19560909
127644	41	0.10552596
127794	6	0.015442823
127942	4	0.010295215
131956	1	0.0025738038
136065	1	0.0025738038
136140	16	0.041180861
136214	76	0.19560909
136288	41	0.10552596
136363	6	0.015442823
136437	4	0.010295215
138444	1	0.0025738038
141620	1	0.0025738038
142514	1	0.0025738038
142662	2	0.0051476076
143256	1	0.0025738038
143276	1	0.0025738038
143723	1	0.0025738038
143797	2	0.0051476076
144094	1	0.0025738038
144298	1	0.0025738038
144594	1	0.0025738038
144615	1	0.0025738038
144763	1	0.0025738038
147291	1	0.0025738038
149650	1	0.0025738038

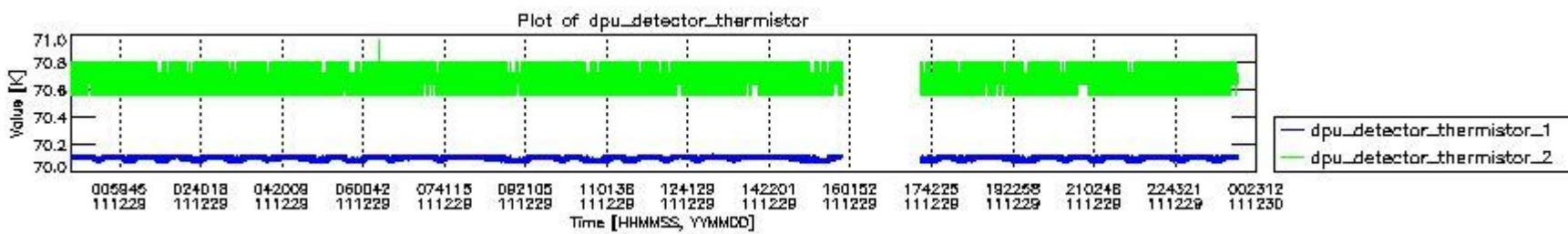




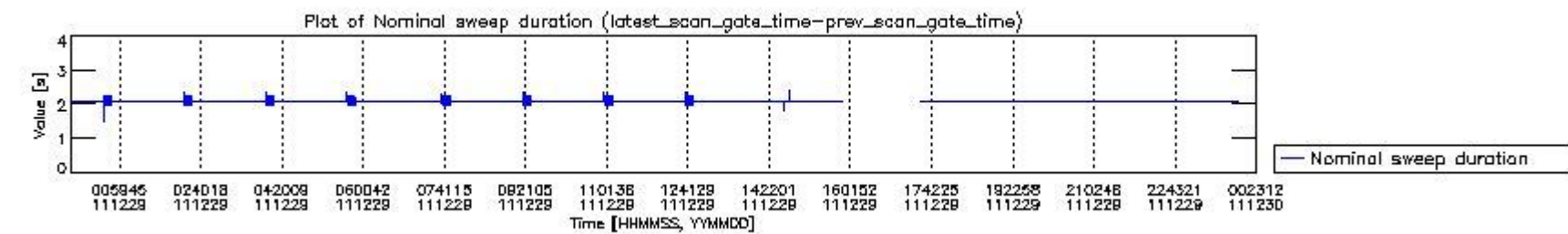
mipas_daily_report_level0_KSPT_L0_4504_N_20111229_1.PNG



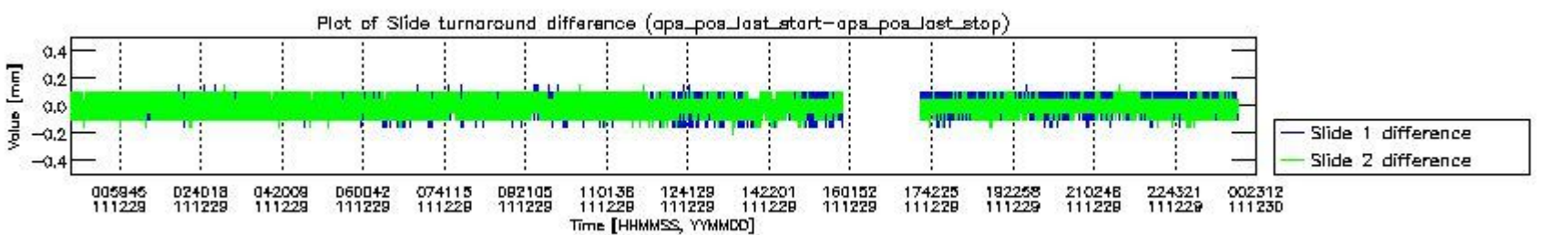
mipas_daily_report_level0_KSPT_L0_4504_N_20111229_2.PNG



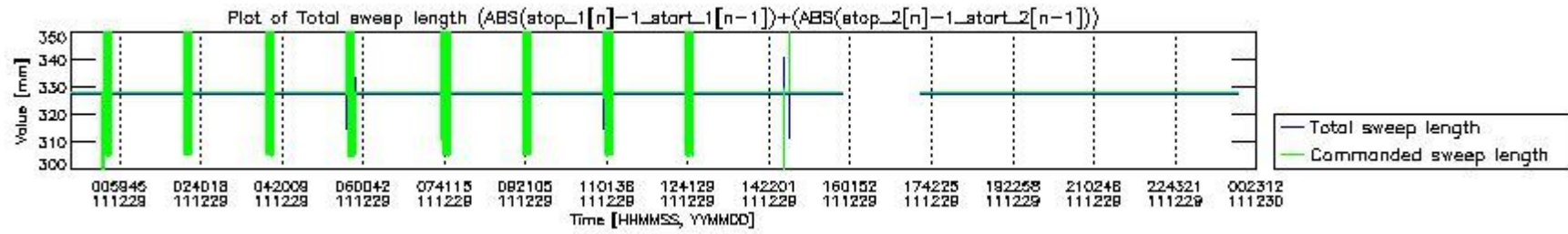
mipas_daily_report_level0_KSPT_L0_4504_N_20111229_3.PNG



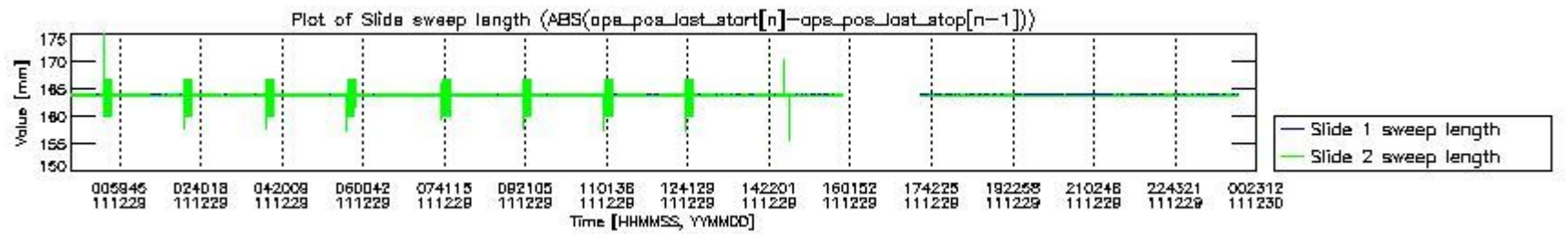
mipas_daily_report_level0_KSPT_L0_4504_N_20111229_4.PNG



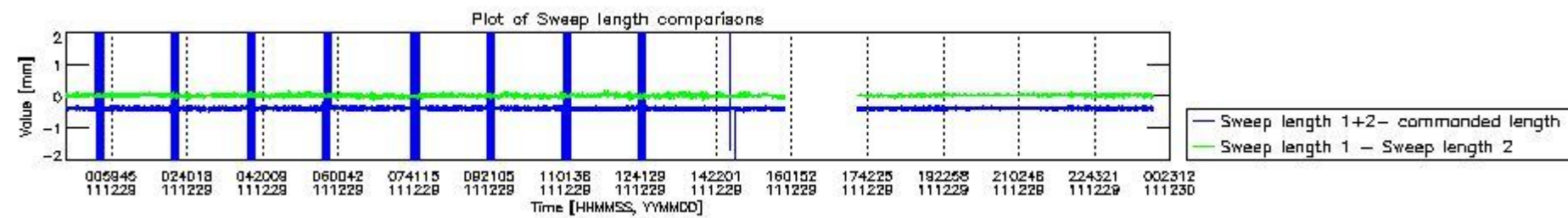
mipas_daily_report_level0_KSPT_L0_4504_N_20111229_5.PNG



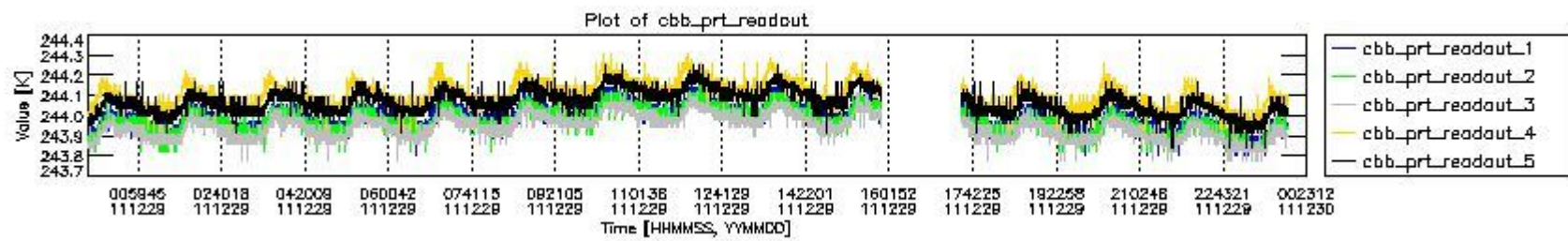
mipas_daily_report_level0_KSPT_L0_4504_N_20111229_6.PNG



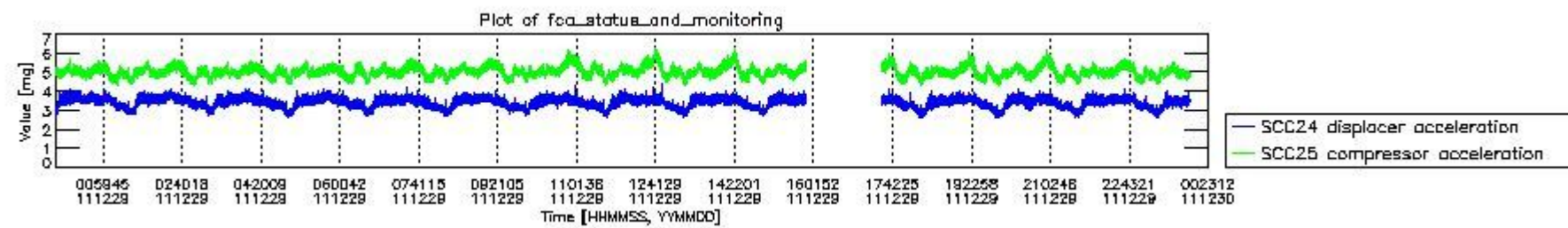
mipas_daily_report_level0_KSPT_L0_4504_N_20111229_7.PNG



mipas_daily_report_level0_KSPT_L0_4504_N_20111229_8.PNG



mipas_daily_report_level0_KSPT_L0_4504_N_20111229_9.PNG

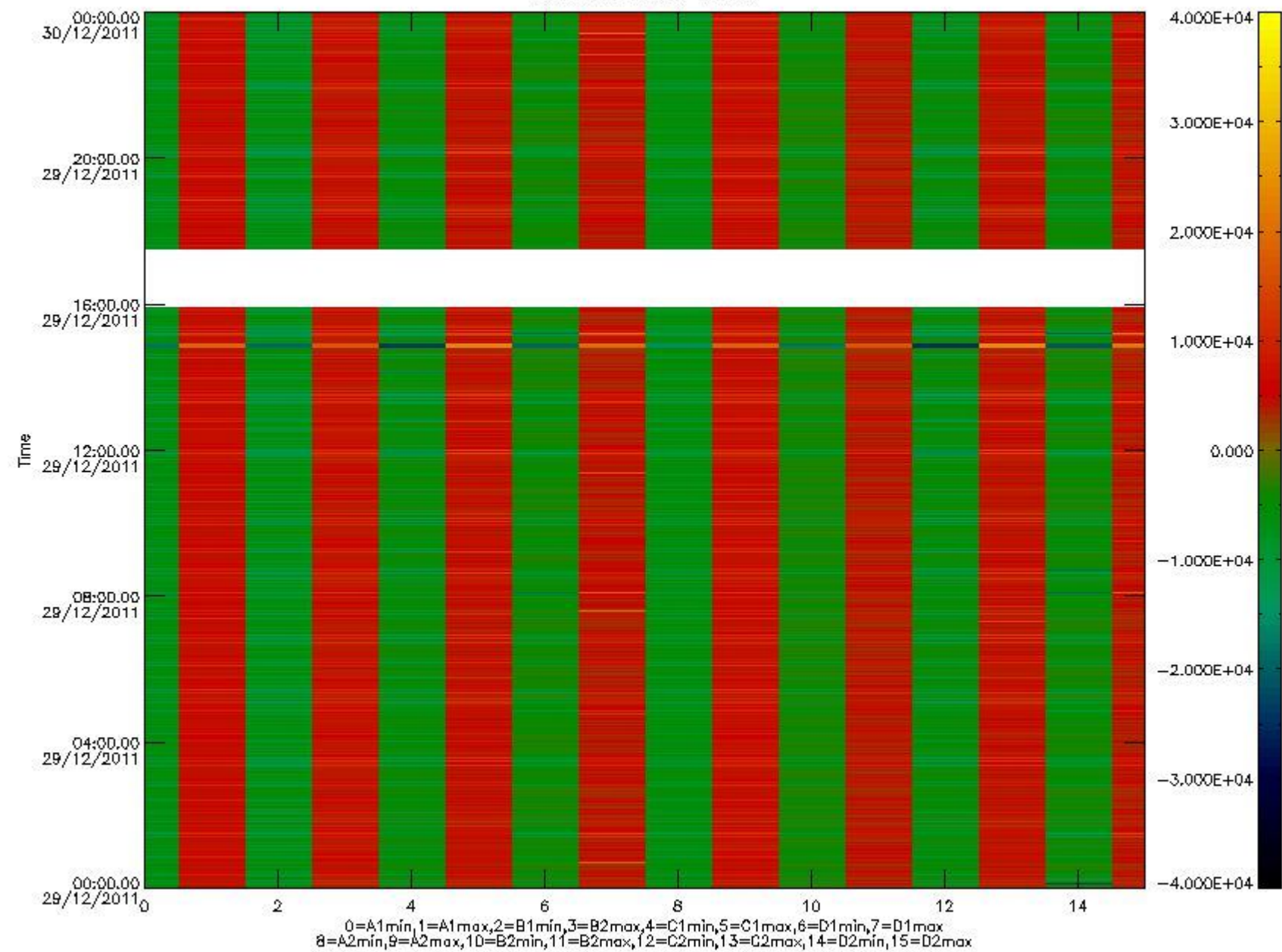


mipas_daily_report_level0_KSPT_L0_4504_N_20111229_10.PNG

The following table shows channel statistics for all channels for this day.

Channel	Min	Max	ADC
A1	-17949	18965	16bit
B1	-20171	17379	16bit
C1	-24328	24188	16bit
D1	-26348	32767	16bit
A2	-15625	19211	16bit
B2	-17979	17676	16bit
C2	-25279	24911	16bit
D2	-32768	32767	16bit

MIPNLOP_MIPSOUPAC_aux_fields_1gm_cal, channel statistics plot
Colour indicates value.



mipas_daily_report_level0_KSPT_L0_4504_N_20111229_11.PNG

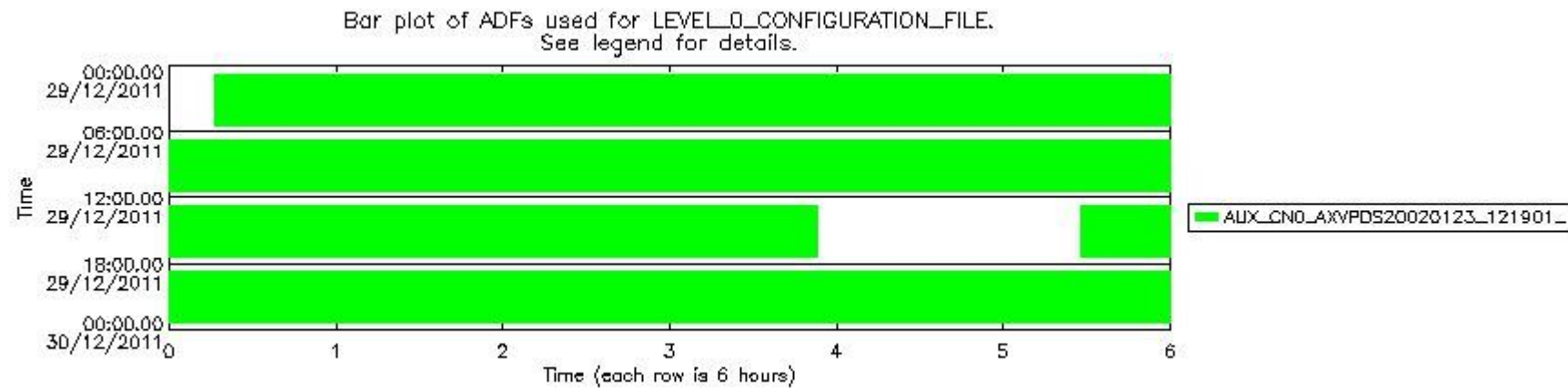
0.3 ADF monitoring

The use of ADFs is shown in two ways:

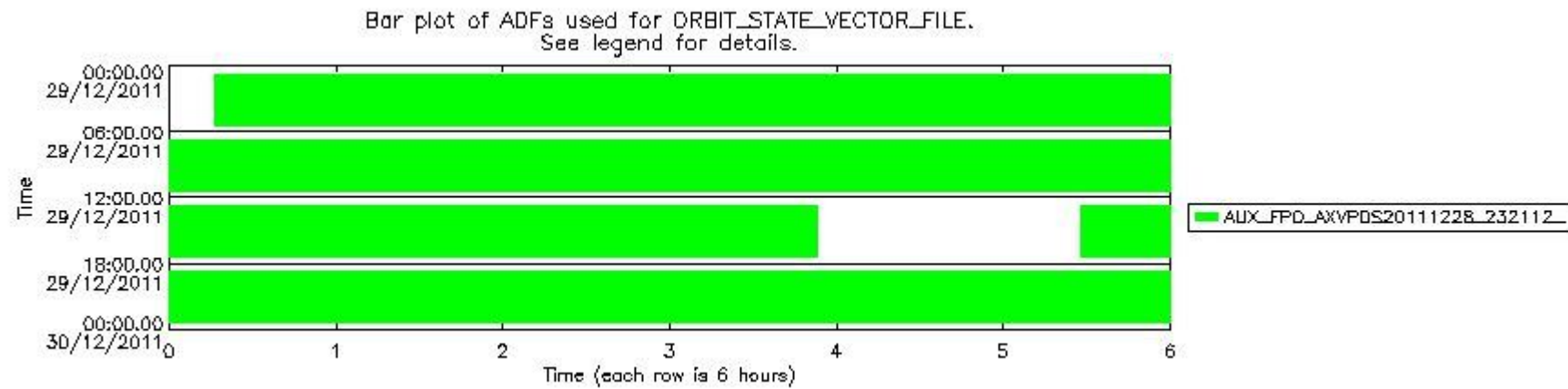
1. By means of two tables that can be used to find the ADF used for a specific product.
2. By means of plots that show changes in ADF using colours.

Number	ADF
0	AUX_CN0_AXVPDS20020123_121901_20020101_000000_20200101_000000
1	AUX_FPO_AXVPDS20111228_232112_20111228_192723_20120107_200051

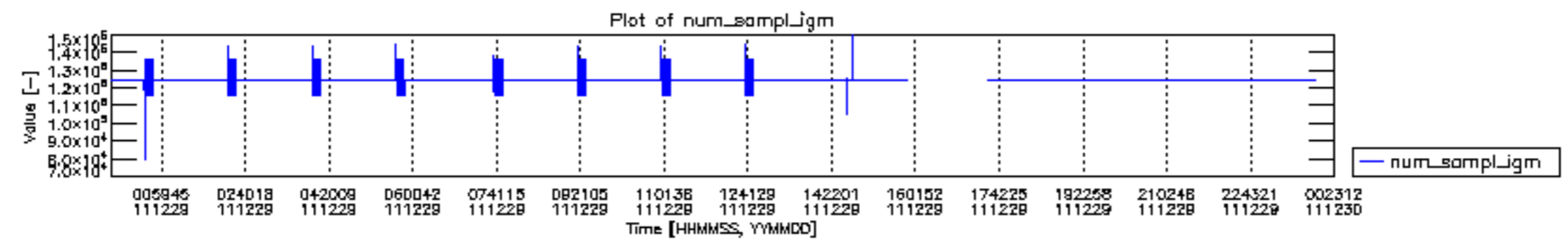
Number	Product name	#CNO	#FPO
0	MIP_NL_0PNPDE20111229_001635_000059483110_00102_51409_5232.N1	0	1
1	MIP_NL_0PNPDE20111229_015446_000043993110_00103_51410_5233.N1	0	1
2	MIP_NL_0PNPDE20111229_030732_000061733110_00104_51411_5234.N1	0	1
3	MIP_NL_0PNPDE20111229_044951_000059933110_00105_51412_5235.N1	0	1
4	MIP_NL_0PNPDK20111229_062911_000041533110_00106_51413_7926.N1	0	1
5	MIP_NL_0PNPDK20111229_073725_000060733110_00107_51414_7927.N1	0	1
6	MIP_NL_0PNPDK20111229_091659_000060103110_00108_51415_7928.N1	0	1
7	MIP_NL_0PNPDK20111229_105533_000048983110_00109_51416_7929.N1	0	1
8	MIP_NL_0PNPDK20111229_121711_000012513110_00110_51417_7930.N1	0	1
9	MIP_NL_0PNPDK20111229_123622_000059663110_00110_51417_7931.N1	0	1
10	MIP_NL_0PNPDK20111229_141450_000058743110_00111_51418_7932.N1	0	1
11	MIP_NL_0PNPDK20111229_172814_000058643110_00113_51420_7934.N1	0	1
12	MIP_NL_0PNPDK20111229_190455_000060893110_00114_51421_7935.N1	0	1
13	MIP_NL_0PNPDE20111229_204453_000044913110_00115_51422_5236.N1	0	1
14	MIP_NL_0PNPDE20111229_215848_000061083110_00115_51422_5237.N1	0	1
15	MIP_NL_0PNPDE20111229_233931_000060403110_00116_51423_5238.N1	0	1

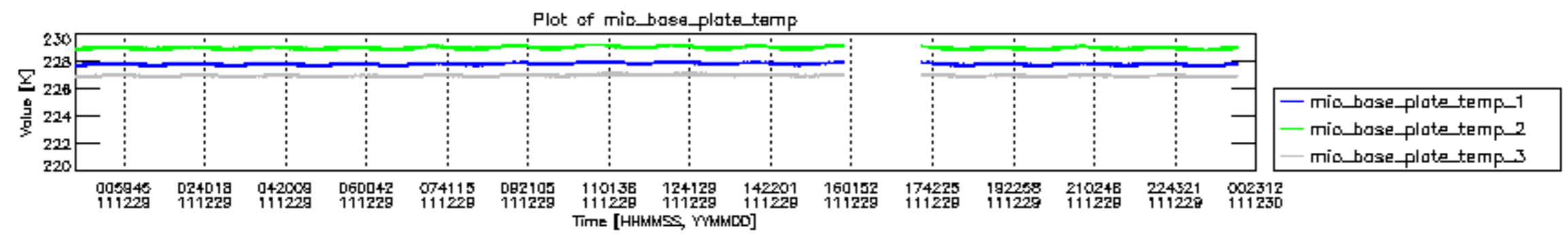


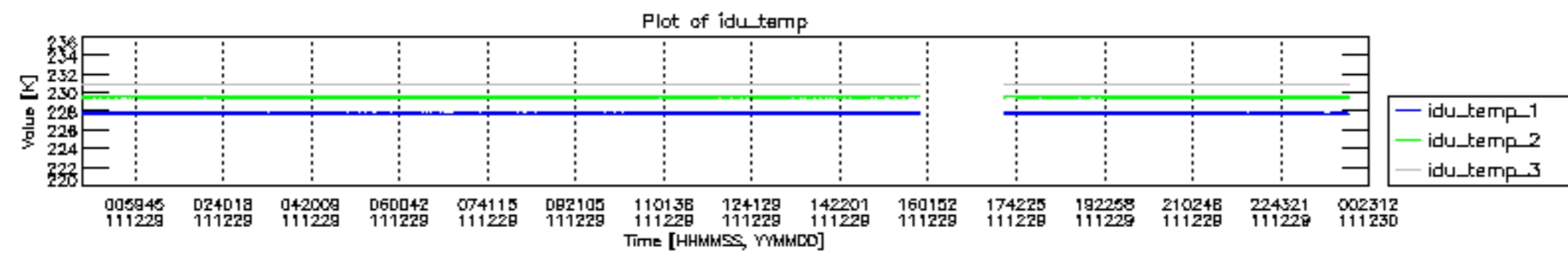
mipas_daily_report_level0_KSPT_L0_4504_N_20111229_12.PNG

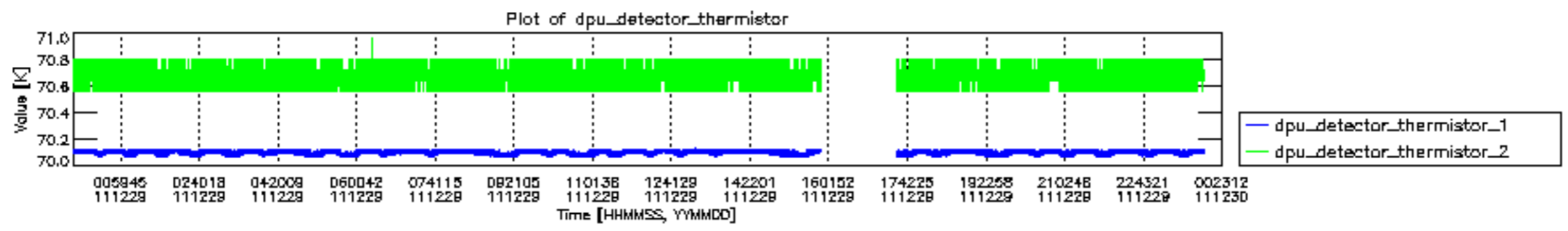


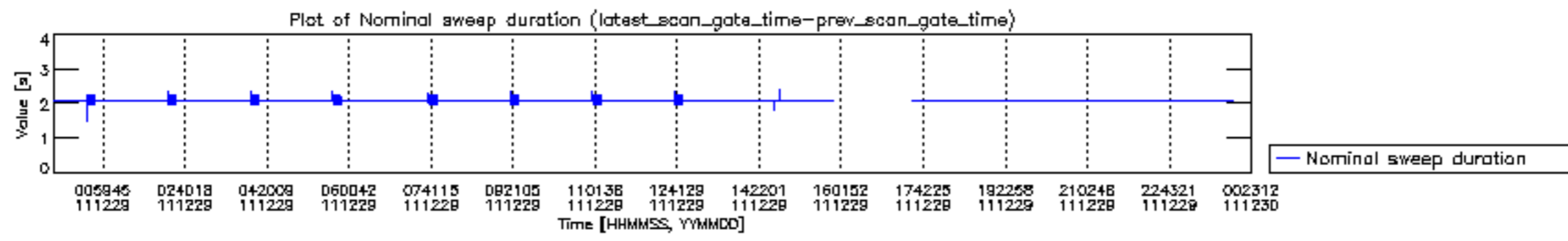
mipas_daily_report_level0_KSPT_L0_4504_N_20111229_13.PNG

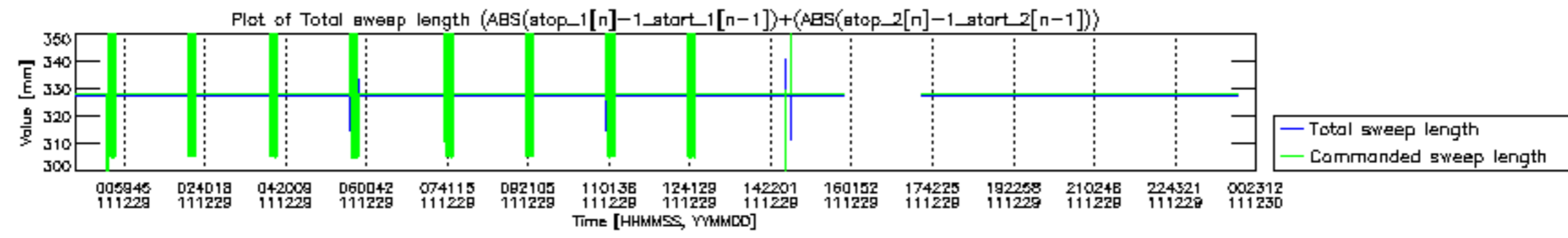


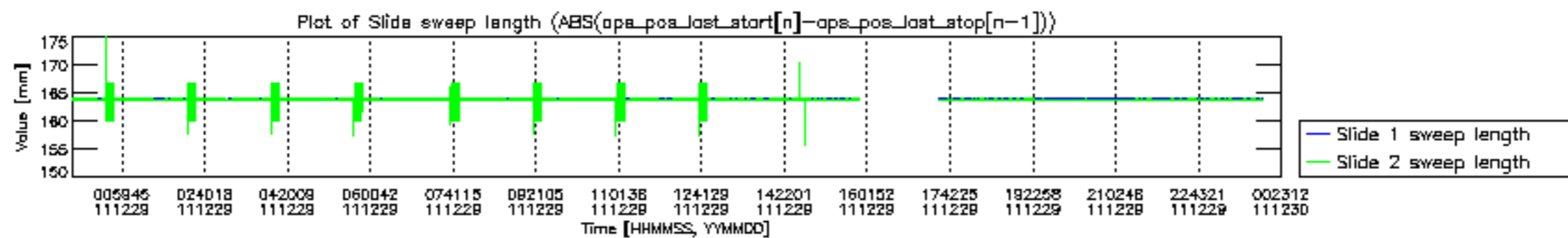


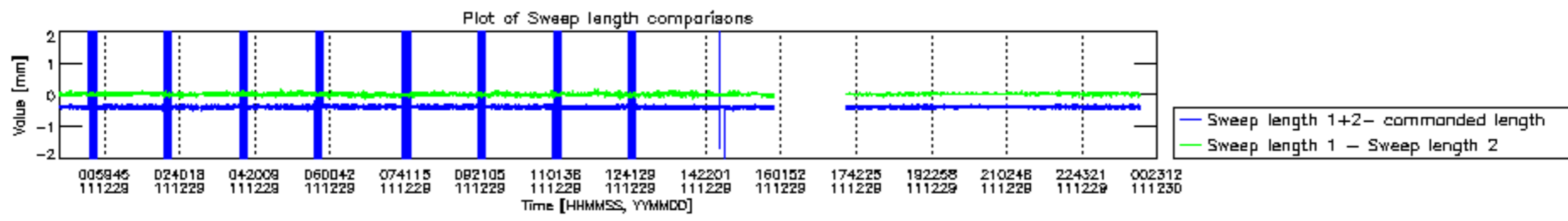


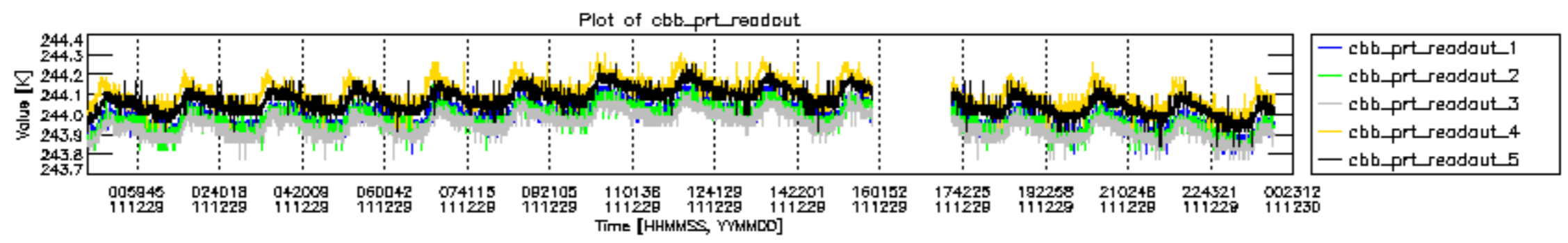


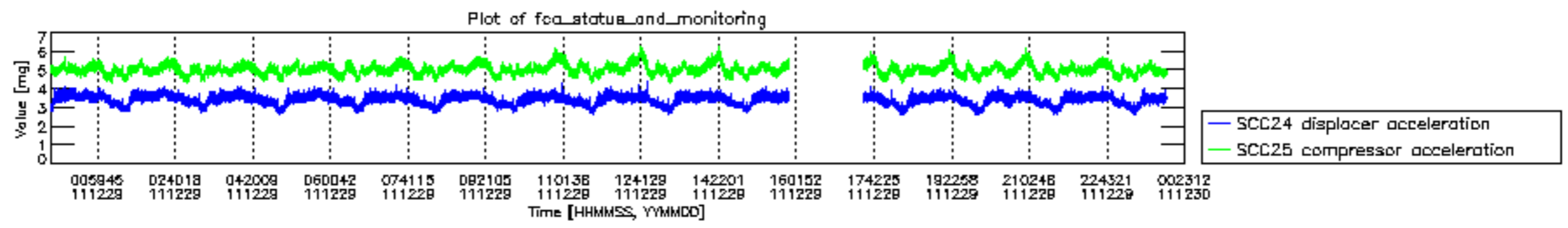












MIPNLOP_MIPSOUPAC_aux_fields_igm_cal, channel statistics plot
 Colour indicates value.

