

## 0. MIPAS Daily Report for level 0 products

### [0.1 General Info](#)

### [0.2 Instrument Operational Performance Parameters](#)

### [0.3 ADF monitoring](#)

## 0.1 General Info

This report contains a daily analysis on parameters extracted from MIPAS level 0 data (The MIP\_NL\_\_0P product).

### 0.1.1 Report summary

The table below shows general characteristics of the data that are included into this report.

Item	Value
Report version	v1.6 08-11-2010
Time of report generation	31DEC2011 05:23:54
Data source version	KSPT_L0/4504-N
Processing scope for products	26DEC2011 00:00:00 to 27DEC2011 00:00:00
Start time of first product within scope	26DEC2011 00:25:32
Stop time of last product within scope	27DEC2011 01:28:44
Total number of level 0 products	17
Number of level 0 products with errors	0

### 0.1.2 Product Quality Indicators per product

The following table shows a summary for each product used in this report.

#	Product name	Start time	Stop time	Prod err	ISP err sign	ISP miss sign	ISP disc sign	rs sign
0	MIP_NL__0PNPDE20111226_002532_000058983110_00059_51366_5213.N1	26DEC2011 00:25:32	26DEC2011 02:03:49	0	0	0	0	0
1	MIP_NL__0PNPDE20111226_004554_000046753110_00060_51367_0494.N1	26DEC2011 00:45:54	26DEC2011 02:03:49	0	0	0	0	0
2	MIP_NL__0PNPDE20111226_020253_000045213110_00060_51367_5214.N1	26DEC2011 02:02:53	26DEC2011 03:18:14	0	0	0	0	0
3	MIP_NL__0PNPDE20111226_031740_000061523110_00061_51368_5215.N1	26DEC2011 03:17:40	26DEC2011 05:00:12	0	0	0	0	0
4	MIP_NL__0PNPDE20111226_045941_000060353110_00062_51369_5216.N1	26DEC2011 04:59:41	26DEC2011 06:40:16	0	0	0	0	0
5	MIP_NL__0PNPDK20111226_063943_000041073110_00063_51370_7899.N1	26DEC2011 06:39:43	26DEC2011 07:48:10	0	0	0	0	0
6	MIP_NL__0PNPDK20111226_074713_000059643110_00064_51371_7900.N1	26DEC2011 07:47:13	26DEC2011 09:26:37	0	0	0	0	0
7	MIP_NL__0PNPDK20111226_092535_000061163110_00065_51372_7901.N1	26DEC2011 09:25:35	26DEC2011 11:07:31	0	0	0	0	0
8	MIP_NL__0PNPDK20111226_110632_000060643110_00066_51373_7902.N1	26DEC2011 11:06:32	26DEC2011 12:47:37	0	0	0	0	0
9	MIP_NL__0PNPDK20111226_124638_000058873110_00067_51374_7903.N1	26DEC2011 12:46:38	26DEC2011 14:24:45	0	0	0	0	0
10	MIP_NL__0PNPDK20111226_142338_000058703110_00068_51375_7904.N1	26DEC2011 14:23:38	26DEC2011 16:01:28	0	0	0	0	0
11	MIP_NL__0PNPDK20111226_155954_000059603110_00069_51376_7905.N1	26DEC2011 15:59:54	26DEC2011 17:39:14	0	0	0	0	0
12	MIP_NL__0PNPDK20111226_173811_000058893110_00070_51377_7906.N1	26DEC2011 17:38:11	26DEC2011 19:16:20	0	0	0	0	0
13	MIP_NL__0PNPDK20111226_191518_000061063110_00071_51378_7908.N1	26DEC2011 19:15:18	26DEC2011 20:57:04	0	0	0	0	0
14	MIP_NL__0PNPDE20111226_205503_000044753110_00072_51379_5217.N1	26DEC2011 20:55:03	26DEC2011 22:09:37	0	0	0	0	0
15	MIP_NL__0PNPDE20111226_220841_000061123110_00072_51379_5218.N1	26DEC2011 22:08:41	26DEC2011 23:50:33	0	0	0	0	0
16	MIP_NL__0PNPDE20111226_234931_000059543110_00073_51380_5219.N1	26DEC2011 23:49:31	27DEC2011 01:28:44	0	0	0	0	0

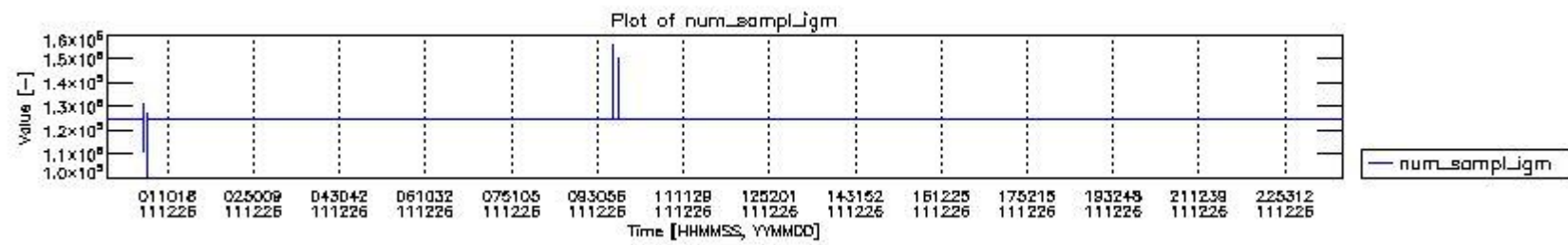
## 0.2 Instrument Operational Performance Parameters

The following plots give an overview of various instrument parameters for this day. The instrument parameters are part of the auxiliary data field within the source packets of the MIP\_NL\_\_0P product. The auxiliary data is normally included twice per interferogram. Note that only the first packet is currently included in monitoring.

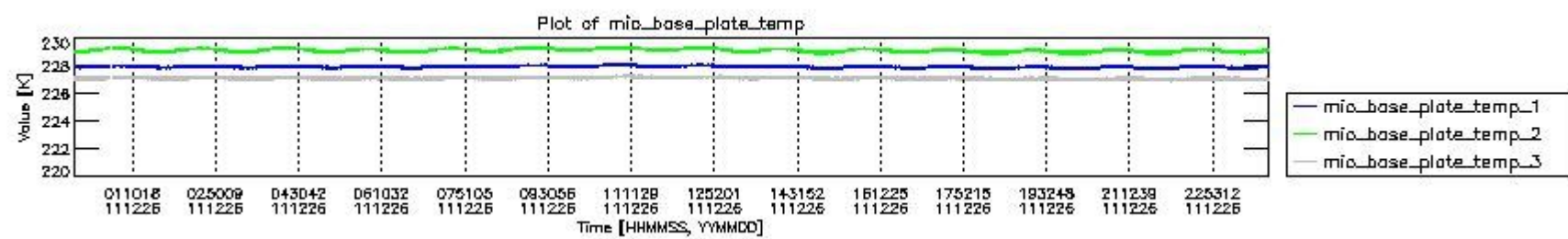
The following table shows the counts of various interferogram number of samples

Number of igm samples	Count [#]	Count [%]
100557	1	0.0024057546

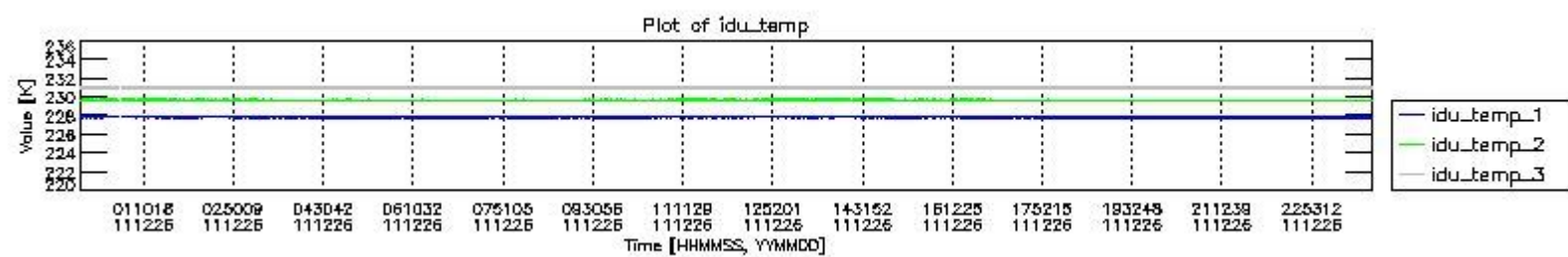
111250	1	0.0024057546
117832	1	0.0024057546
124800	38608	92.881372
124803	2947	7.0897587
125809	1	0.0024057546
126818	1	0.0024057546
127679	1	0.0024057546
130207	1	0.0024057546
131382	1	0.0024057546
147811	1	0.0024057546
150339	1	0.0024057546
150690	1	0.0024057546
155746	1	0.0024057546



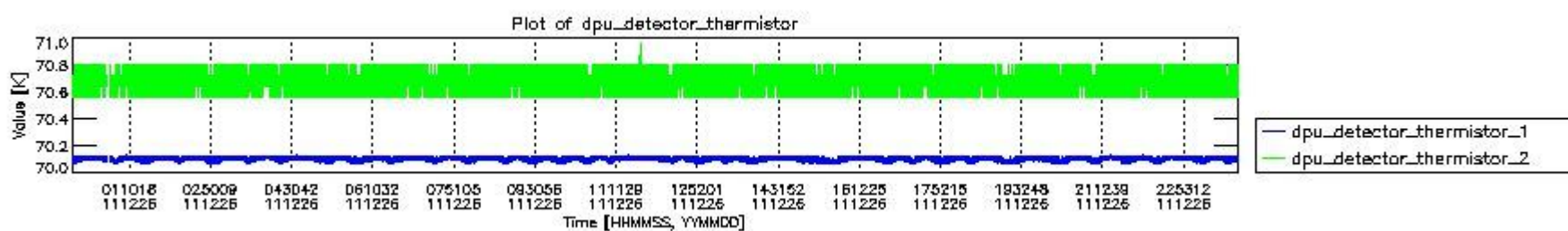
mipas\_daily\_report\_level0\_KSPT\_L0\_4504\_N\_20111226\_0.PNG



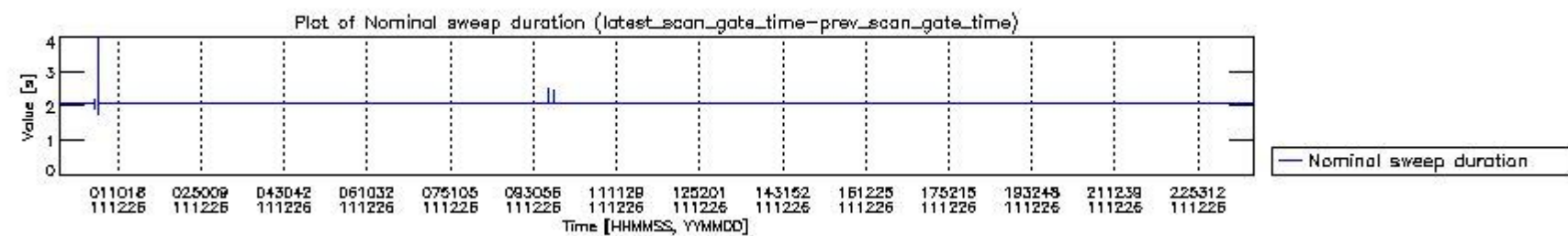
mipas\_daily\_report\_level0\_KSPT\_L0\_4504\_N\_20111226\_1.PNG



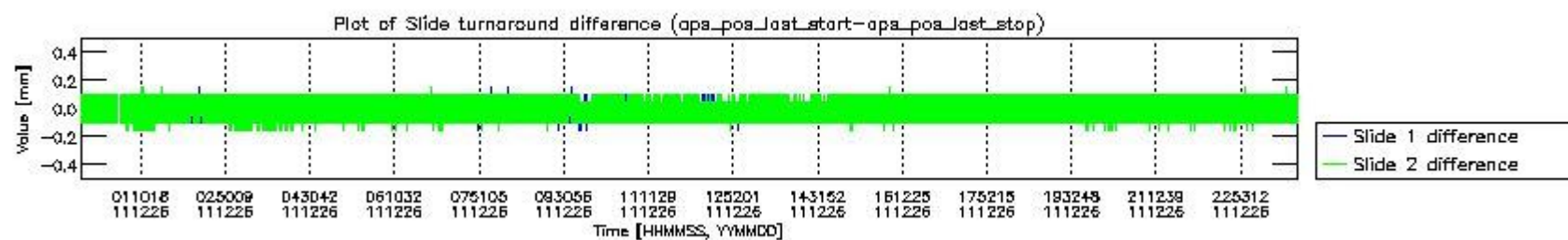
mipas\_daily\_report\_level0\_KSPT\_L0\_4504\_N\_20111226\_2.PNG



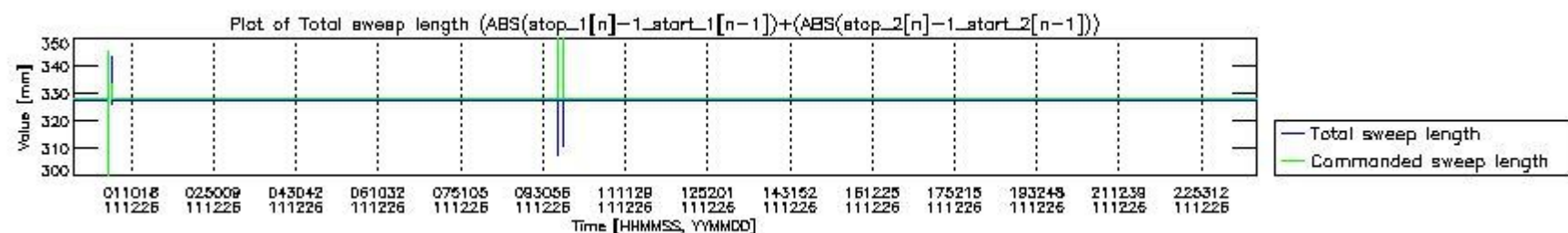
mipas\_daily\_report\_level0\_KSPT\_L0\_4504\_N\_20111226\_3.PNG



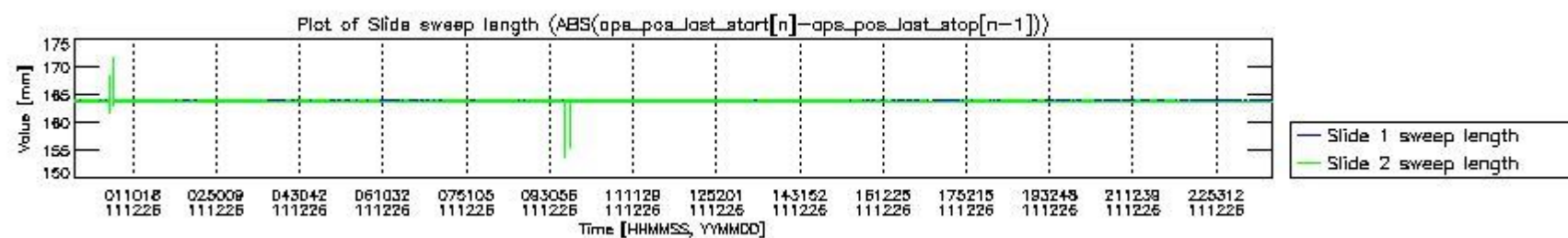
mipas\_daily\_report\_level0\_KSPT\_L0\_4504\_N\_20111226\_4.PNG



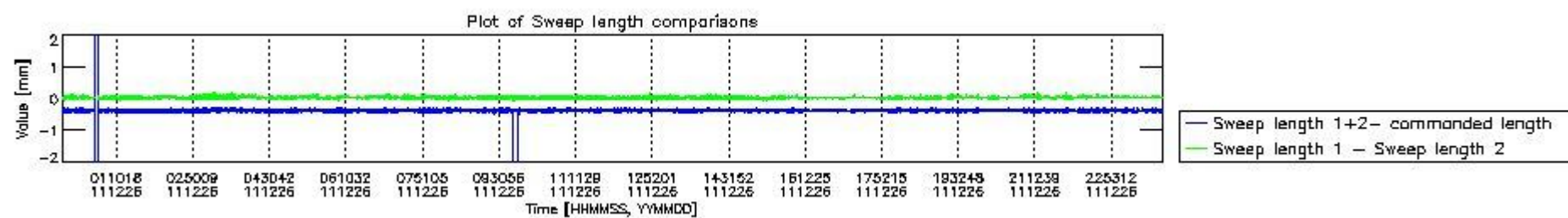
mipas\_daily\_report\_level0\_KSPT\_L0\_4504\_N\_20111226\_5.PNG



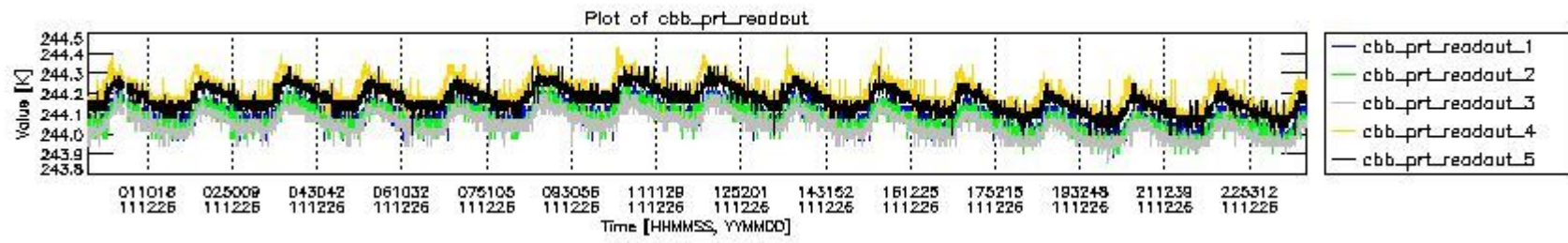
mipas\_daily\_report\_level0\_KSPT\_L0\_4504\_N\_20111226\_6.PNG



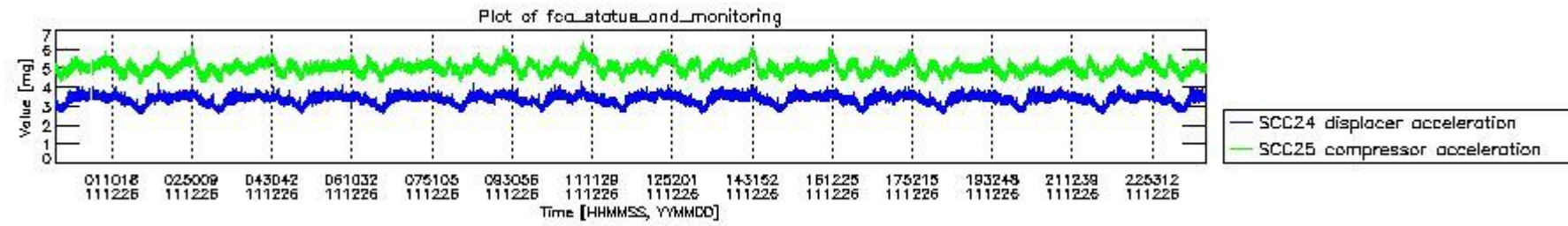
mipas\_daily\_report\_level0\_KSPT\_L0\_4504\_N\_20111226\_7.PNG



mipas\_daily\_report\_level0\_KSPT\_L0\_4504\_N\_20111226\_8.PNG



mipas\_daily\_report\_level0\_KSPT\_L0\_4504\_N\_20111226\_9.PNG

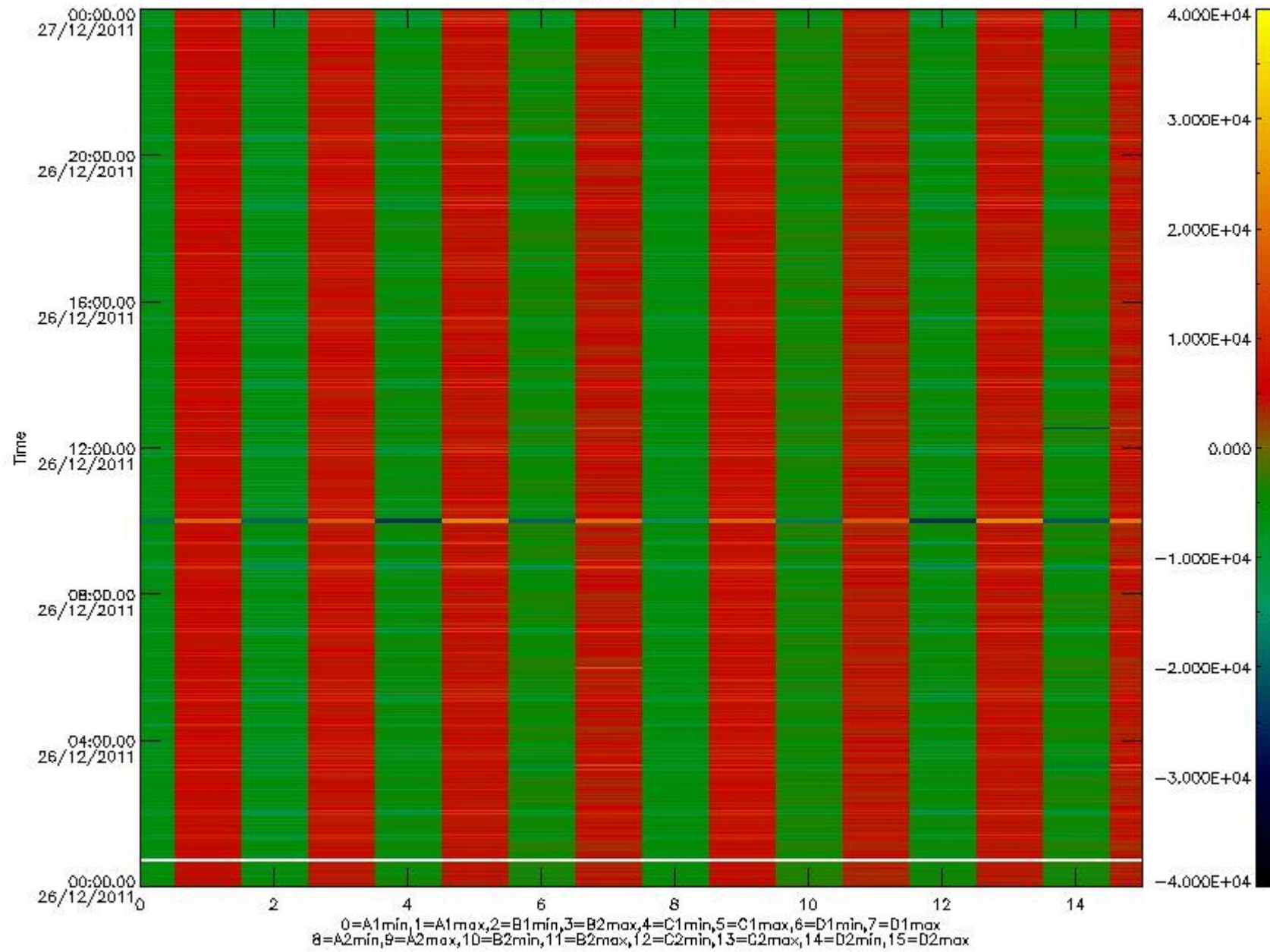


mipas\_daily\_report\_level0\_KSPT\_L0\_4504\_N\_20111226\_10.PNG

The following table shows channel statistics for all channels for this day.

Channel	Min	Max	ADC
A1	-17986	19036	16bit
B1	-20206	17406	16bit
C1	-24378	24270	16bit
D1	-30519	32767	16bit
A2	-15632	19247	16bit
B2	-18033	17723	16bit
C2	-25381	25211	16bit
D2	-32768	32767	16bit

MIPNLOP\_MIPSOUPAC\_aux\_fields\_igm\_cal, channel statistics plot  
Colour indicates value.



mipas\_daily\_report\_level0\_KSPT\_L0\_4504\_N\_20111226\_11.PNG

### 0.3 ADF monitoring

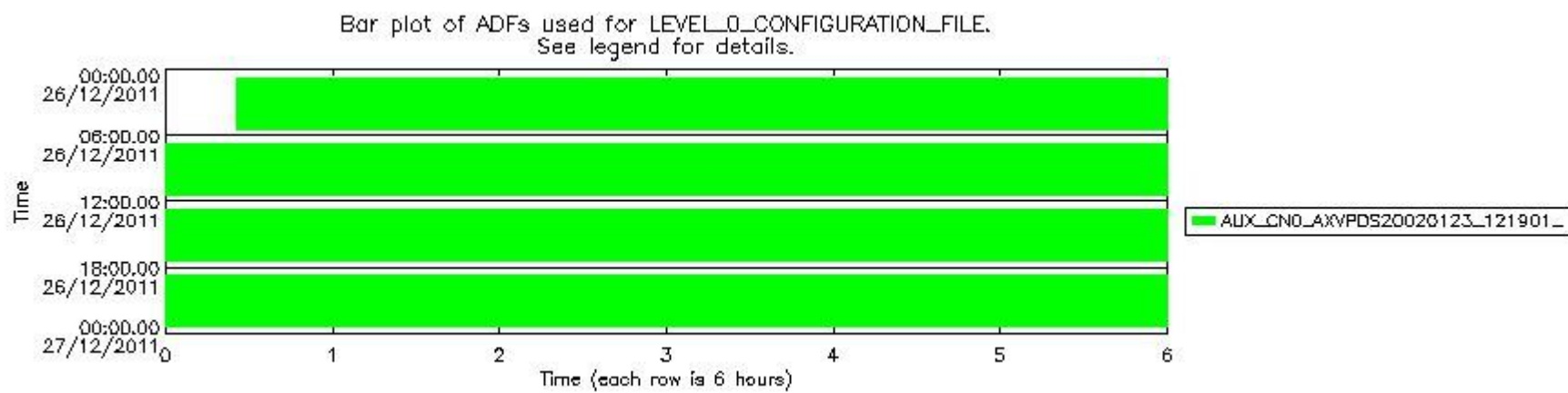
The use of ADFs is shown in two ways:

1. By means of two tables that can be used to find the ADF used for a specific product.
2. By means of plots that show changes in ADF using colours.

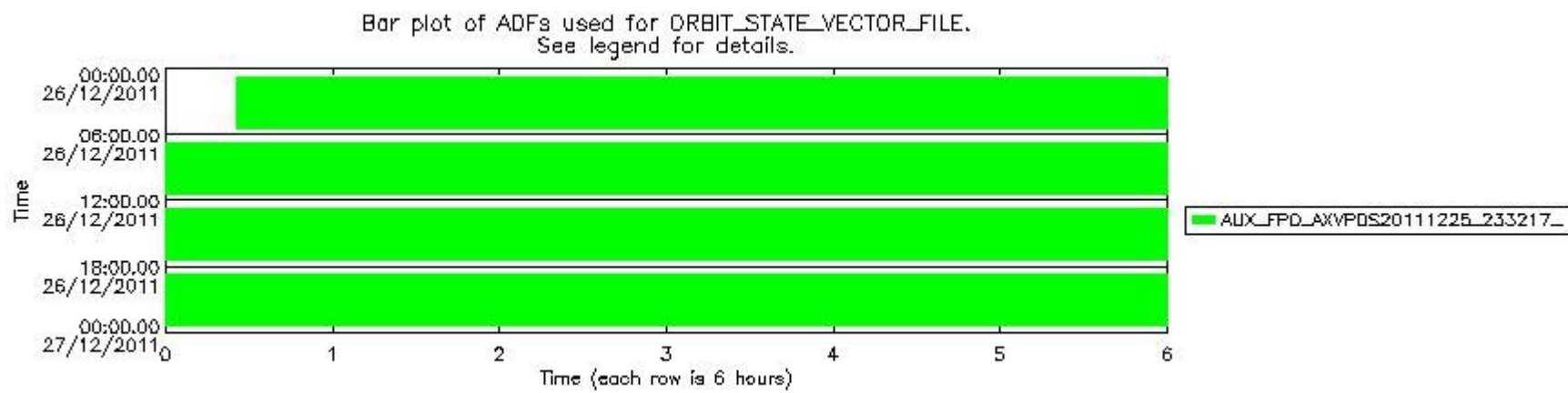
Number	ADF
0	AUX_CN0_AXVPDS20020123_121901_20020101_000000_20200101_000000
1	AUX_FPO_AXVPDS20111225_233217_20111225_193724_20120104_201051

Number	Product name	#CN0	#FPO
0	MIP_NL_0PNPDE20111226_002532_000058983110_00059_51366_5213.N1	0	1

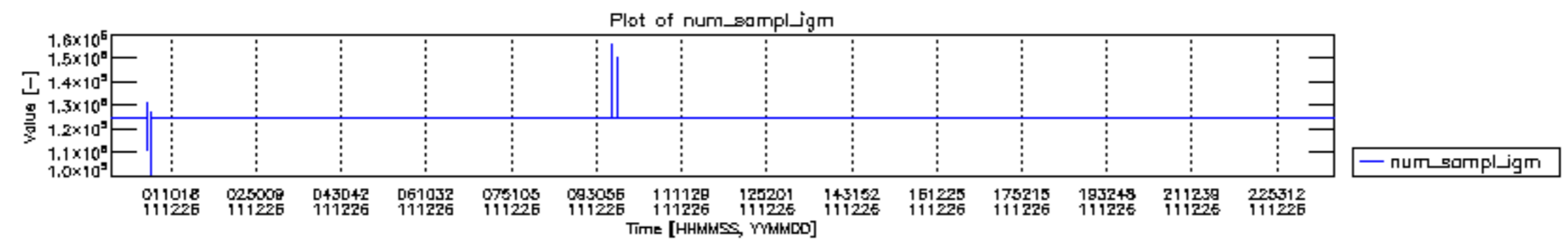
1	MIP_NL__0PNPDE20111226_004554_000046753110_00060_51367_0494.N1	0	1
2	MIP_NL__0PNPDE20111226_020253_000045213110_00060_51367_5214.N1	0	1
3	MIP_NL__0PNPDE20111226_031740_000061523110_00061_51368_5215.N1	0	1
4	MIP_NL__0PNPDE20111226_045941_000060353110_00062_51369_5216.N1	0	1
5	MIP_NL__0PNPDK20111226_063943_000041073110_00063_51370_7899.N1	0	1
6	MIP_NL__0PNPDK20111226_074713_000059643110_00064_51371_7900.N1	0	1
7	MIP_NL__0PNPDK20111226_092535_000061163110_00065_51372_7901.N1	0	1
8	MIP_NL__0PNPDK20111226_110632_000060643110_00066_51373_7902.N1	0	1
9	MIP_NL__0PNPDK20111226_124638_000058873110_00067_51374_7903.N1	0	1
10	MIP_NL__0PNPDK20111226_142338_000058703110_00068_51375_7904.N1	0	1
11	MIP_NL__0PNPDK20111226_155954_000059603110_00069_51376_7905.N1	0	1
12	MIP_NL__0PNPDK20111226_173811_000058893110_00070_51377_7906.N1	0	1
13	MIP_NL__0PNPDK20111226_191518_000061063110_00071_51378_7908.N1	0	1
14	MIP_NL__0PNPDE20111226_205503_000044753110_00072_51379_5217.N1	0	1
15	MIP_NL__0PNPDE20111226_220841_000061123110_00072_51379_5218.N1	0	1
16	MIP_NL__0PNPDE20111226_234931_000059543110_00073_51380_5219.N1	0	1

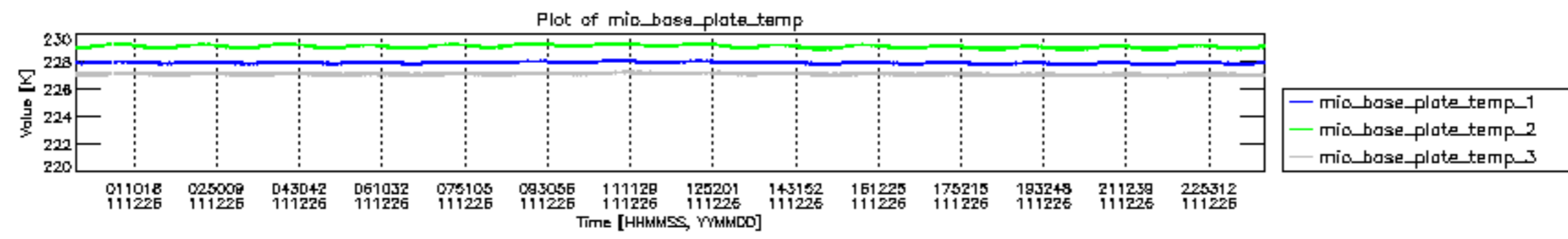


mipas\_daily\_report\_level0\_KSPT\_L0\_4504\_N\_20111226\_12.PNG

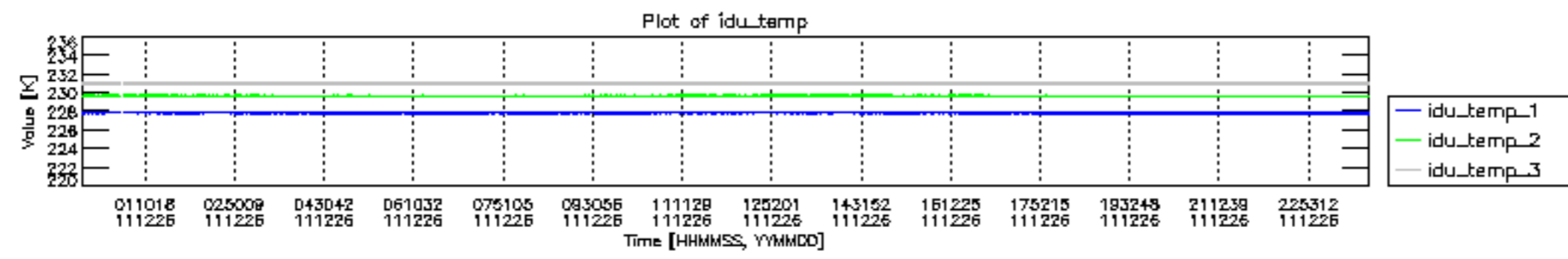


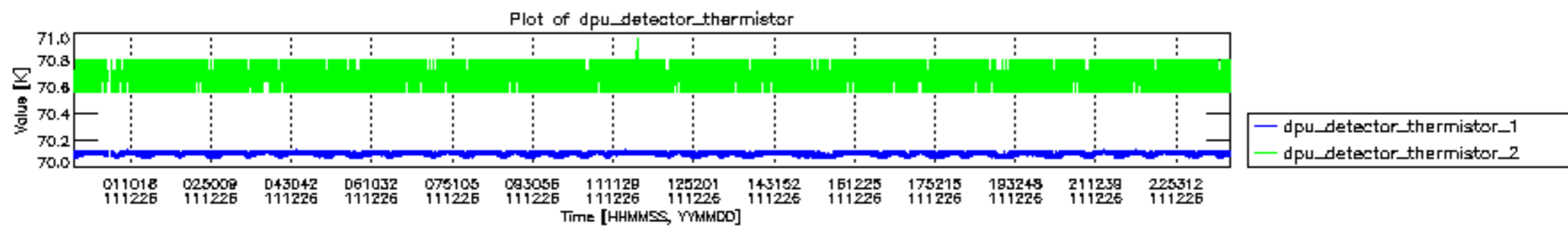
mipas\_daily\_report\_level0\_KSPT\_L0\_4504\_N\_20111226\_13.PNG

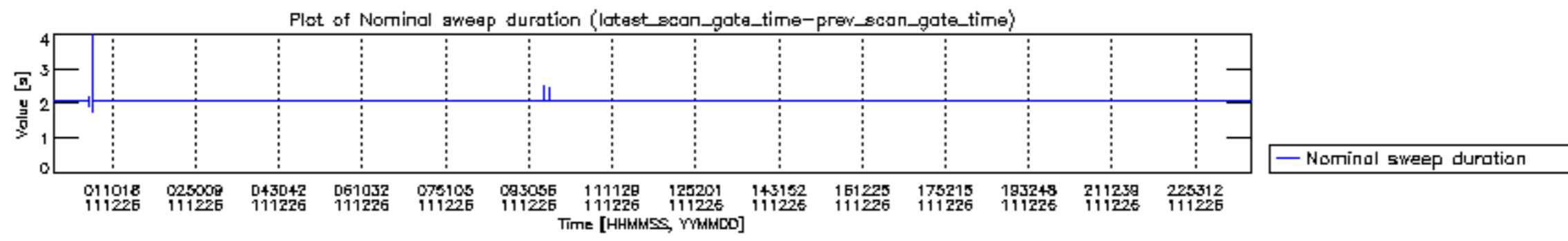


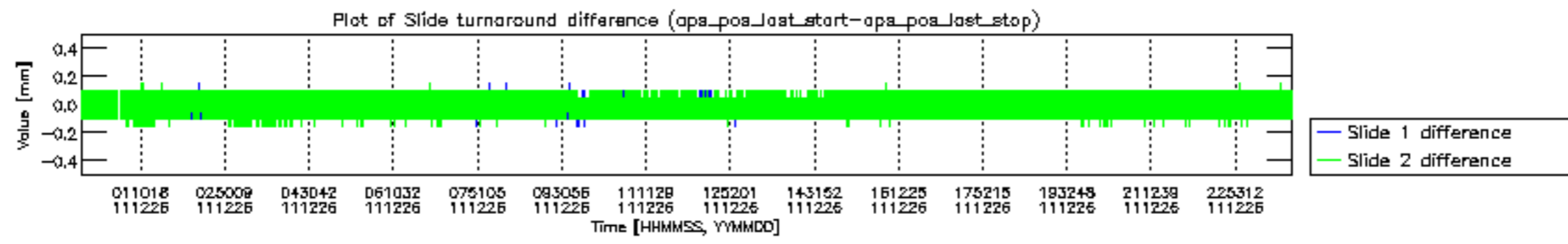


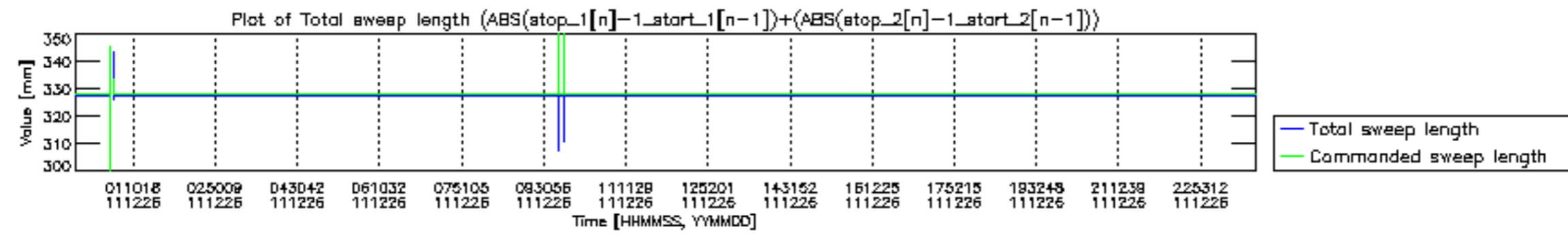


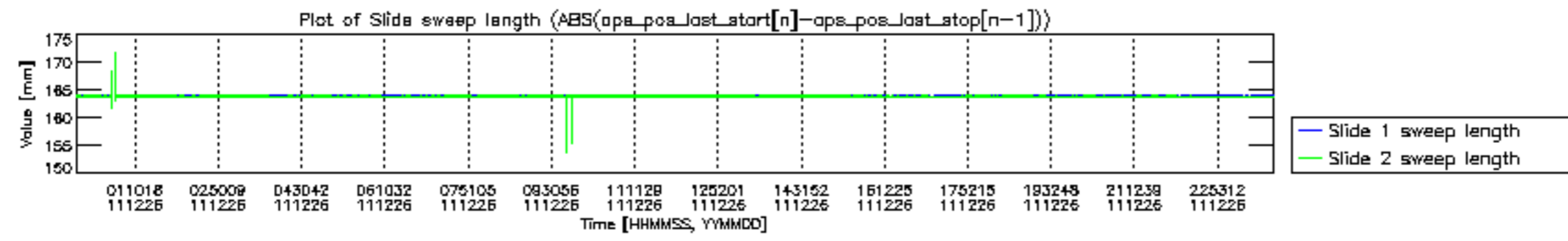


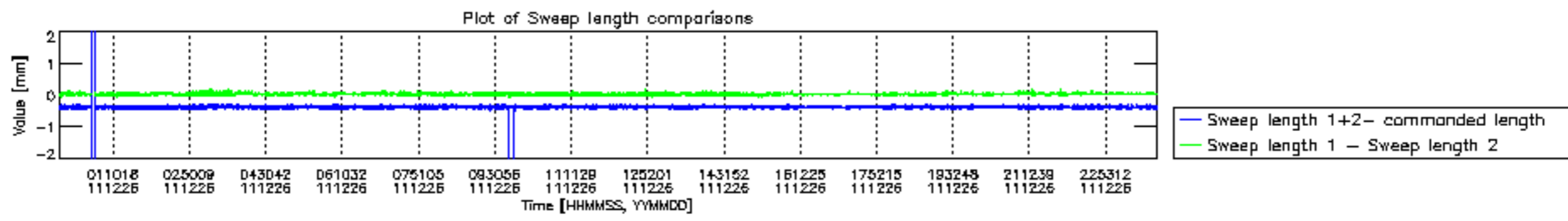


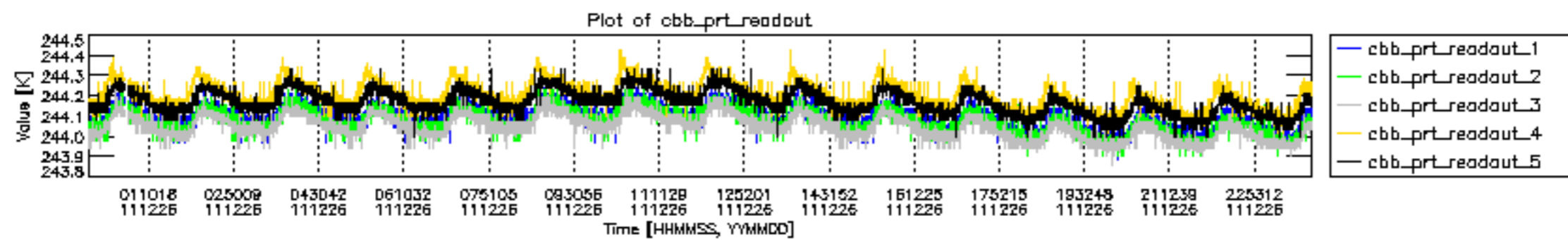




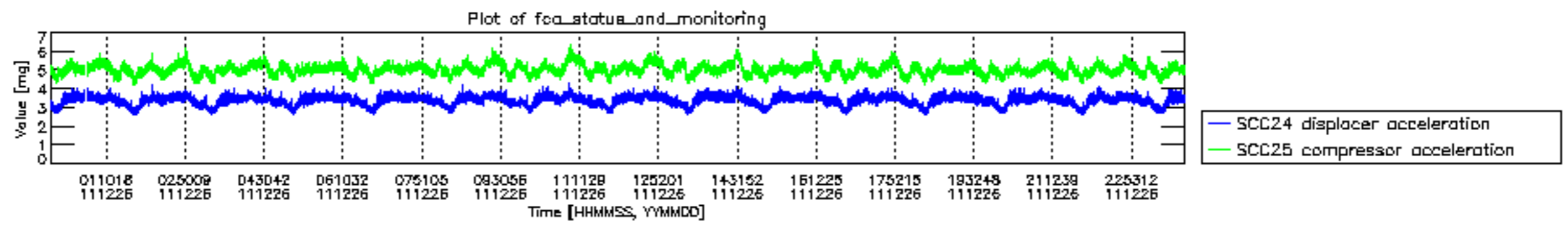












MIPNLOP\_MIPSOUPAC\_aux\_fields\_igm\_cal, channel statistics plot  
 Colour indicates value.

