

0. MIPAS Daily Report for level 0 products

[0.1 General Info](#)

[0.2 Instrument Operational Performance Parameters](#)

[0.3 ADF monitoring](#)

0.1 General Info

This report contains a daily analysis on parameters extracted from MIPAS level 0 data (The MIP_NL__0P product).

0.1.1 Report summary

The table below shows general characteristics of the data that are included into this report.

Item	Value
Report version	v1.6 08-11-2010
Time of report generation	30DEC2011 05:24:21
Data source version	KSPT_L0/4504-N
Processing scope for products	25DEC2011 00:00:00 to 26DEC2011 00:00:00
Start time of first product within scope	25DEC2011 01:04:01
Stop time of last product within scope	26DEC2011 00:26:28
Total number of level 0 products	15
Number of level 0 products with errors	0

0.1.2 Product Quality Indicators per product

The following table shows a summary for each product used in this report.

#	Product name	Start time	Stop time	Prod err	ISP err sign	ISP miss sign	ISP disc sign	rs sign
0	MIP_NL__0PNPDE20111225_010401_000101633110_00045_51352_5207.N1	25DEC2011 01:04:01	25DEC2011 03:53:24	0	0	0	0	0
1	MIP_NL__0PNPDE20111225_012239_000013703110_00046_51353_0481.N1	25DEC2011 01:22:39	25DEC2011 01:45:29	0	0	0	0	0
2	MIP_NL__0PNPDE20111225_014531_000076733110_00046_51353_0483.N1	25DEC2011 01:45:31	25DEC2011 03:53:24	0	0	0	0	0
3	MIP_NL__0PNPDE20111225_035251_000062253110_00047_51354_5208.N1	25DEC2011 03:52:51	25DEC2011 05:36:36	0	0	0	0	0
4	MIP_NL__0PNPDE20111225_053603_000060413110_00048_51355_5209.N1	25DEC2011 05:36:03	25DEC2011 07:16:44	0	0	0	0	0
5	MIP_NL__0PNPDK20111225_082316_000061583110_00050_51357_7892.N1	25DEC2011 08:23:16	25DEC2011 10:05:54	0	0	0	0	0
6	MIP_NL__0PNPDK20111225_100416_000059373110_00051_51358_7893.N1	25DEC2011 10:04:16	25DEC2011 11:43:13	0	0	0	0	0
7	MIP_NL__0PNPDK20111225_114133_000061003110_00052_51359_7894.N1	25DEC2011 11:41:33	25DEC2011 13:23:13	0	0	0	0	0
8	MIP_NL__0PNPDK20111225_132134_000059413110_00053_51360_7895.N1	25DEC2011 13:21:34	25DEC2011 15:00:36	0	0	0	0	0
9	MIP_NL__0PNPDK20111225_145950_000058973110_00054_51361_7896.N1	25DEC2011 14:59:50	25DEC2011 16:38:07	0	0	0	0	0
10	MIP_NL__0PNPDK20111225_163635_000060043110_00055_51362_7897.N1	25DEC2011 16:36:35	25DEC2011 18:16:39	0	0	0	0	0
11	MIP_NL__0PNPDK20111225_181538_000059373110_00056_51363_7898.N1	25DEC2011 18:15:38	25DEC2011 19:54:35	0	0	0	0	0
12	MIP_NL__0PNPDE20111225_195226_000041953110_00057_51364_5210.N1	25DEC2011 19:52:26	25DEC2011 21:02:20	0	0	0	0	0
13	MIP_NL__0PNPDE20111225_210122_000064013110_00057_51364_5211.N1	25DEC2011 21:01:22	25DEC2011 22:48:03	0	0	0	0	0
14	MIP_NL__0PNPDE20111225_224656_000059723110_00058_51365_5212.N1	25DEC2011 22:46:56	26DEC2011 00:26:28	0	0	0	0	0

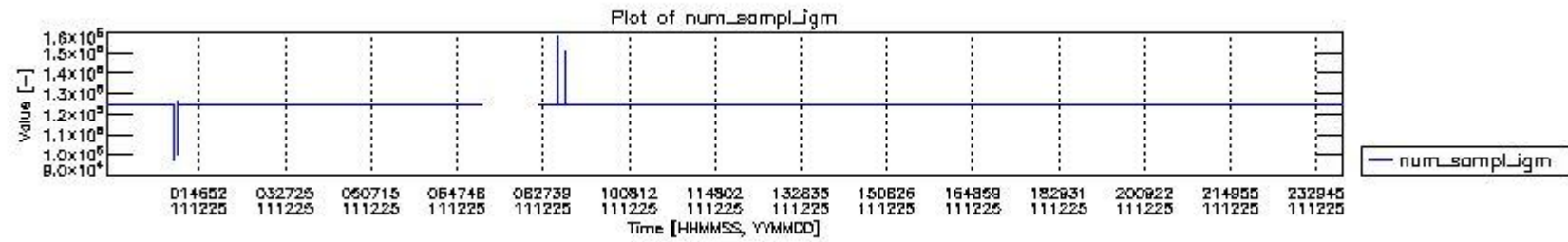
0.2 Instrument Operational Performance Parameters

The following plots give an overview of various instrument parameters for this day. The instrument parameters are part of the auxiliary data field within the source packets of the MIP_NL__0P product. The auxiliary data is normally included twice per interferogram. Note that only the first packet is currently included in monitoring.

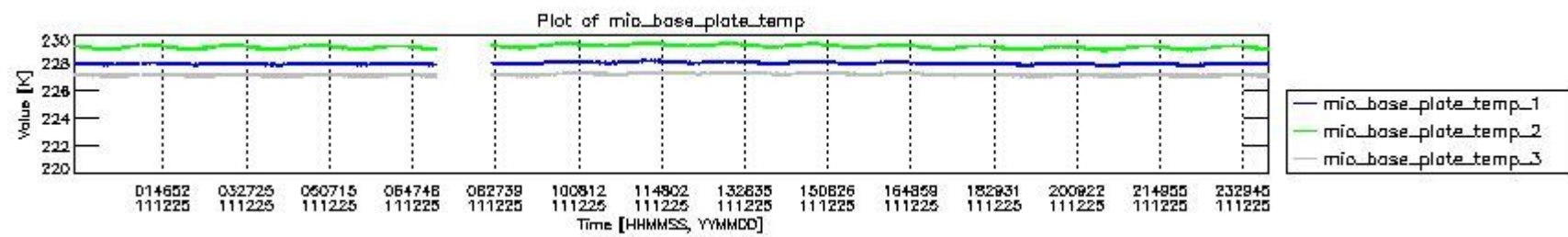
The following table shows the counts of various interferogram number of samples

Number of igm samples	Count [#]	Count [%]
97908	1	0.0025203518
100557	1	0.0025203518
101288	1	0.0025203518

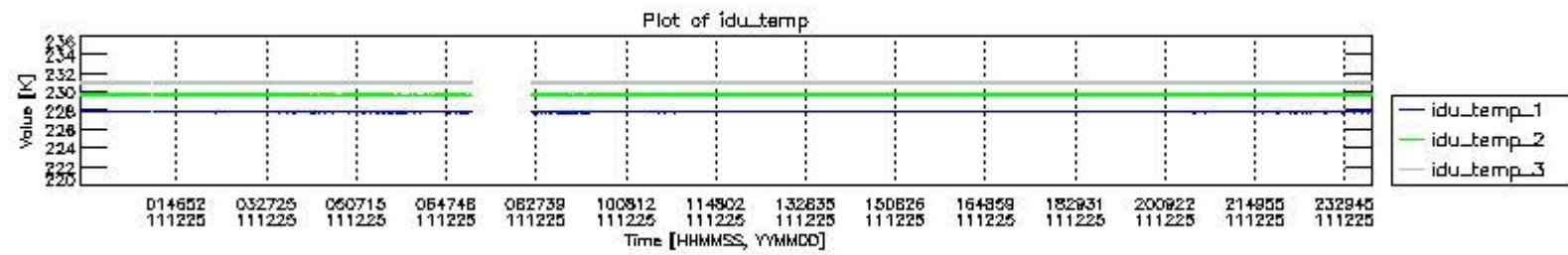
121420	1	0.0025203518
124800	37011	93.280742
124803	2654	6.6890138
125809	1	0.0025203518
126818	1	0.0025203518
127679	1	0.0025203518
131248	1	0.0025203518
147811	1	0.0025203518
150690	1	0.0025203518
151380	1	0.0025203518
157828	1	0.0025203518



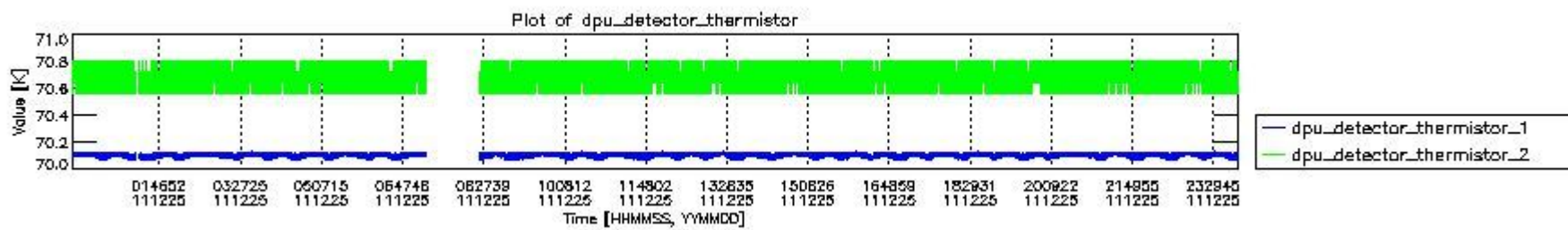
mipas_daily_report_level0_KSPT_L0_4504_N_20111225_0.PNG



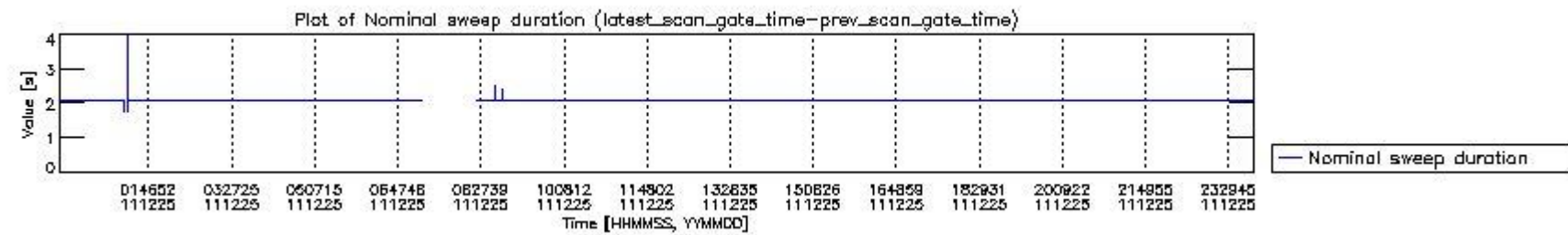
mipas_daily_report_level0_KSPT_L0_4504_N_20111225_1.PNG



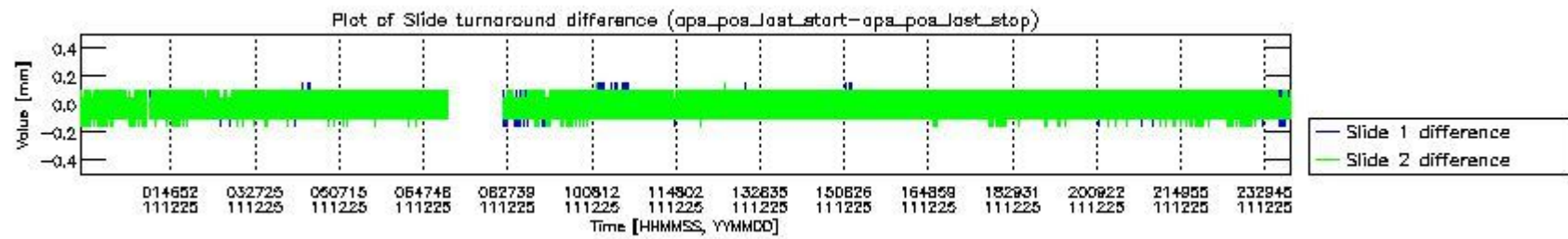
mipas_daily_report_level0_KSPT_L0_4504_N_20111225_2.PNG



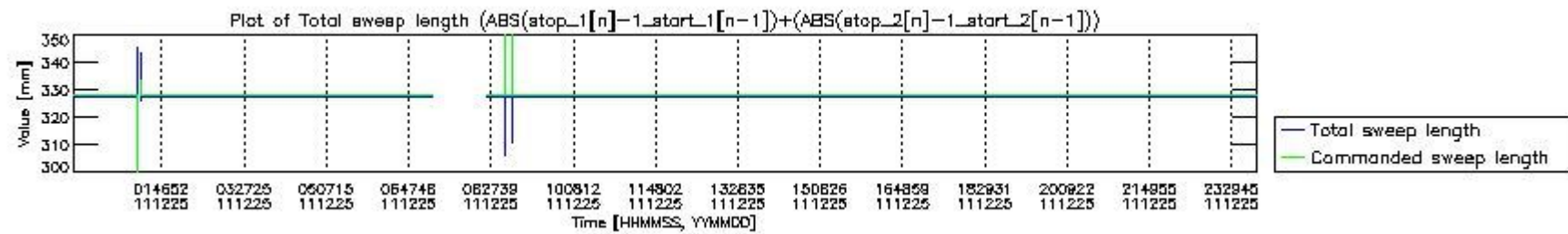
mipas_daily_report_level0_KSPT_L0_4504_N_20111225_3.PNG



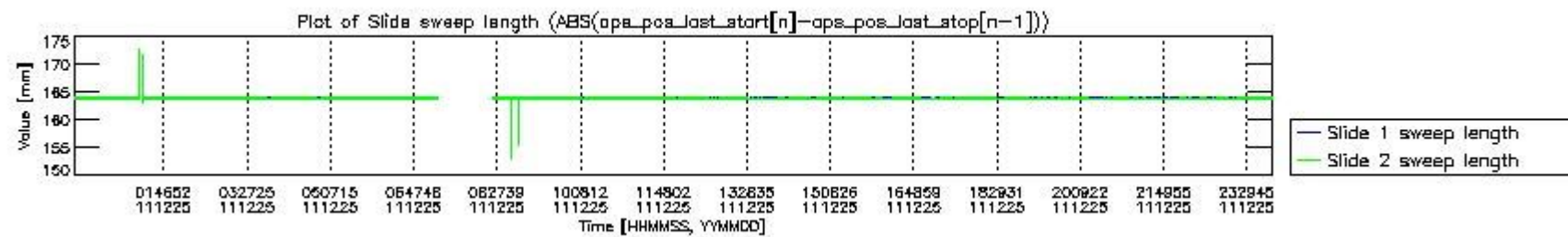
mipas_daily_report_level0_KSPT_L0_4504_N_20111225_4.PNG



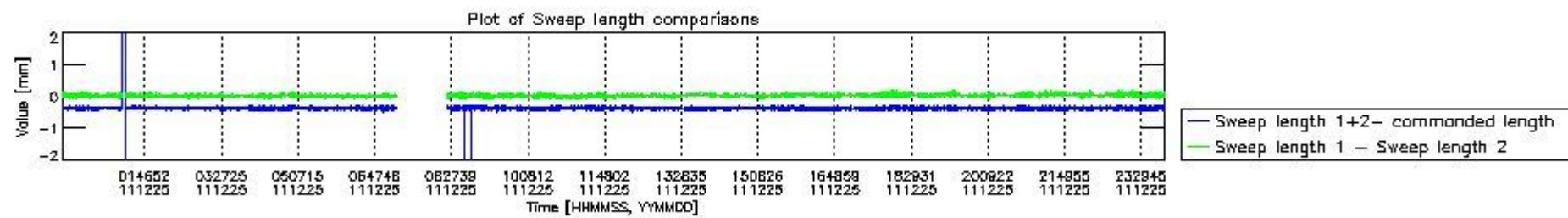
mipas_daily_report_level0_KSPT_L0_4504_N_20111225_5.PNG



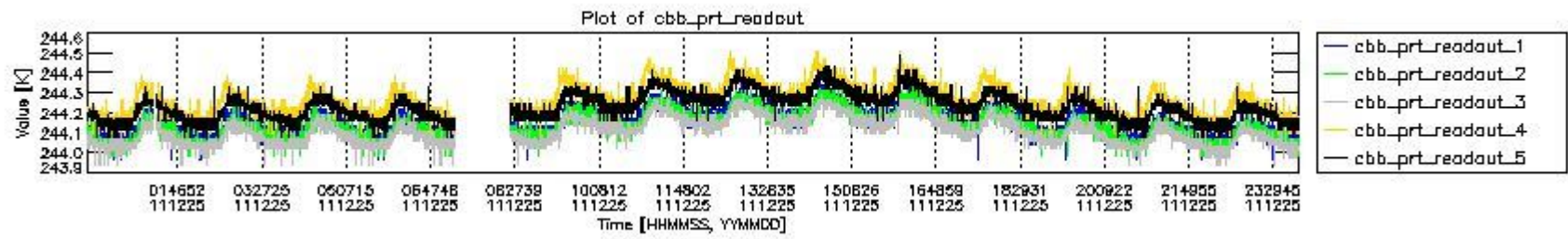
mipas_daily_report_level0_KSPT_L0_4504_N_20111225_6.PNG



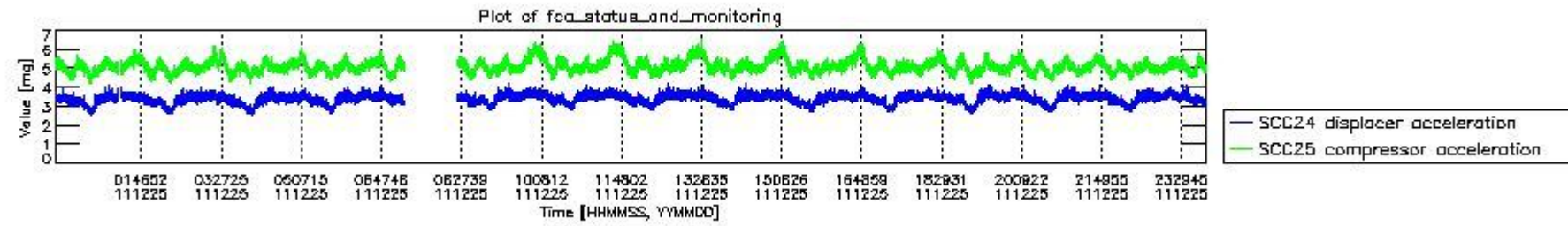
mipas_daily_report_level0_KSPT_L0_4504_N_20111225_7.PNG



mipas_daily_report_level0_KSPT_L0_4504_N_20111225_8.PNG



mipas_daily_report_level0_KSPT_L0_4504_N_20111225_9.PNG

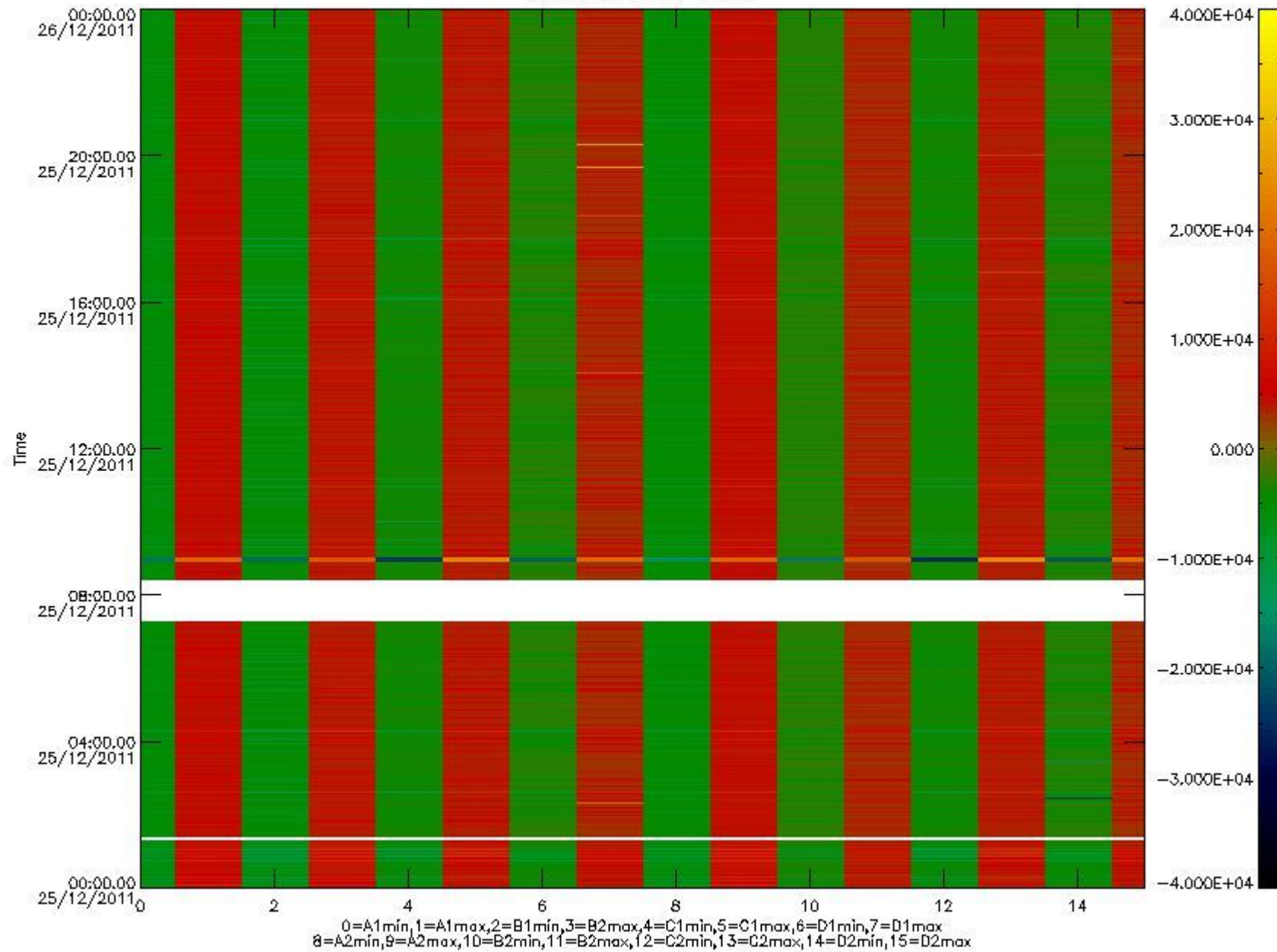


mipas_daily_report_level0_KSPT_L0_4504_N_20111225_10.PNG

The following table shows channel statistics for all channels for this day.

Channel	Min	Max	ADC
A1	-17984	19016	16bit
B1	-20201	17392	16bit
C1	-24353	24258	16bit
D1	-24067	32767	16bit
A2	-15627	19241	16bit
B2	-18035	17719	16bit
C2	-25313	24995	16bit
D2	-32768	28743	16bit

MIPNLOP_MIPSOUPAC_aux_fields_igm_cal, channel statistics plot
Colour indicates value.



mipas_daily_report_level0_KSPT_L0_4504_N_20111225_11.PNG

0.3 ADF monitoring

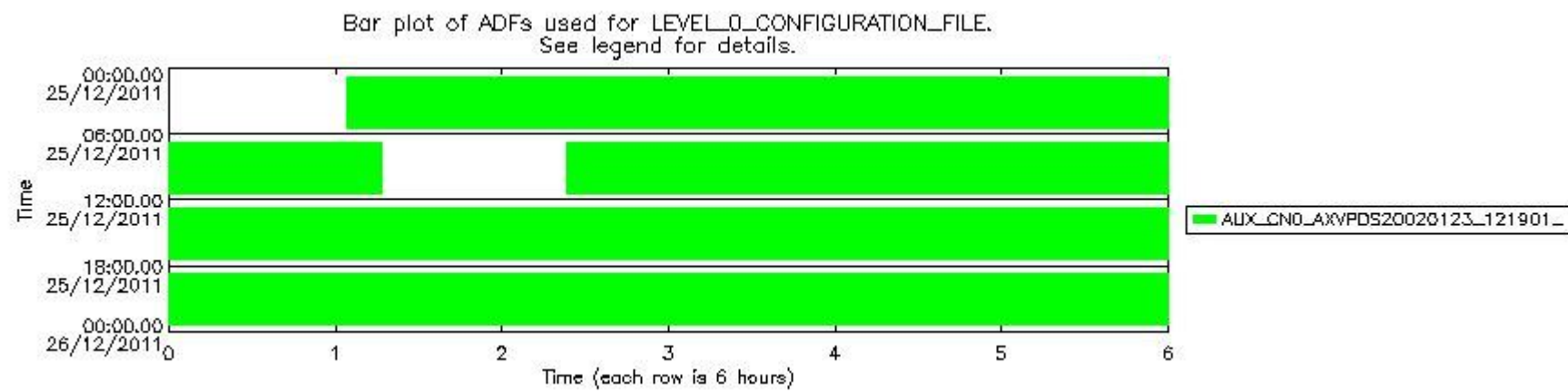
The use of ADFs is shown in two ways:

1. By means of two tables that can be used to find the ADF used for a specific product.
2. By means of plots that show changes in ADF using colours.

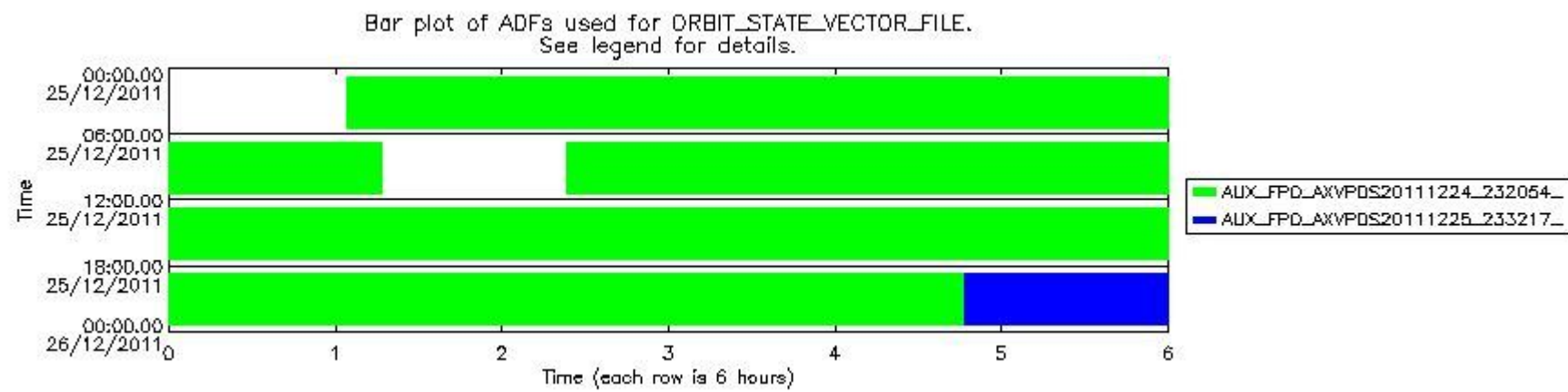
Number	ADF
0	AUX_CN0_AXVPDS20020123_121901_20020101_000000_20200101_000000
1	AUX_FPO_AXVPDS20111224_232054_20111224_183354_20120103_204736
2	AUX_FPO_AXVPDS20111225_233217_20111225_193724_20120104_201051

Number	Product name	#CN0	#FPO
--------	--------------	------	------

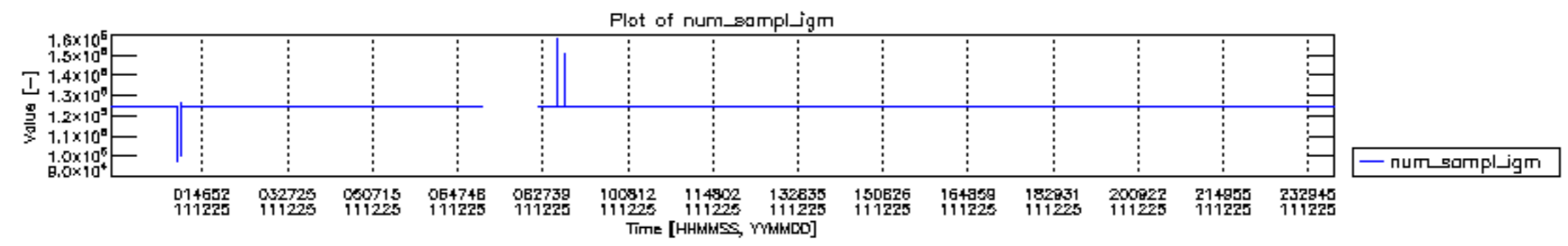
0	MIP_NL__0PNPDE20111225_010401_000101633110_00045_51352_5207.N1	0	1
1	MIP_NL__0PNPDE20111225_012239_000013703110_00046_51353_0481.N1	0	1
2	MIP_NL__0PNPDE20111225_014531_000076733110_00046_51353_0483.N1	0	1
3	MIP_NL__0PNPDE20111225_035251_000062253110_00047_51354_5208.N1	0	1
4	MIP_NL__0PNPDE20111225_053603_000060413110_00048_51355_5209.N1	0	1
5	MIP_NL__0PNPDK20111225_082316_000061583110_00050_51357_7892.N1	0	1
6	MIP_NL__0PNPDK20111225_100416_000059373110_00051_51358_7893.N1	0	1
7	MIP_NL__0PNPDK20111225_114133_000061003110_00052_51359_7894.N1	0	1
8	MIP_NL__0PNPDK20111225_132134_000059413110_00053_51360_7895.N1	0	1
9	MIP_NL__0PNPDK20111225_145950_000058973110_00054_51361_7896.N1	0	1
10	MIP_NL__0PNPDK20111225_163635_000060043110_00055_51362_7897.N1	0	1
11	MIP_NL__0PNPDK20111225_181538_000059373110_00056_51363_7898.N1	0	1
12	MIP_NL__0PNPDE20111225_195226_000041953110_00057_51364_5210.N1	0	1
13	MIP_NL__0PNPDE20111225_210122_000064013110_00057_51364_5211.N1	0	1
14	MIP_NL__0PNPDE20111225_224656_000059723110_00058_51365_5212.N1	0	2

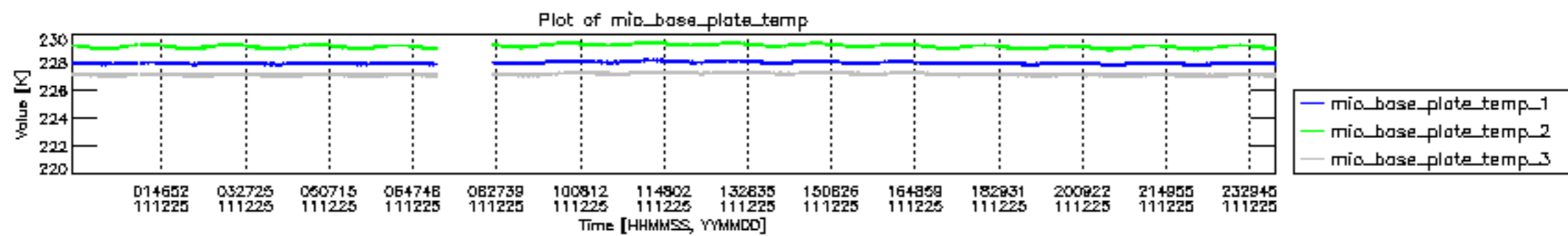


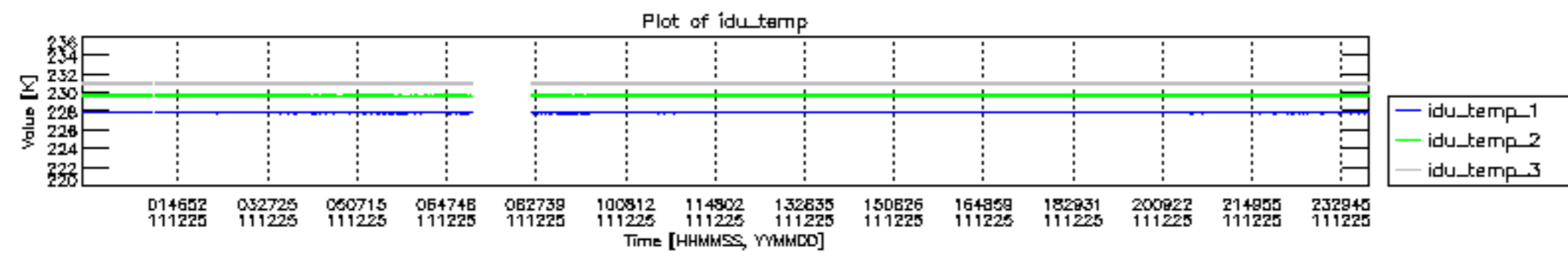
mipas_daily_report_level0_KSPT_L0_4504_N_20111225_12.PNG

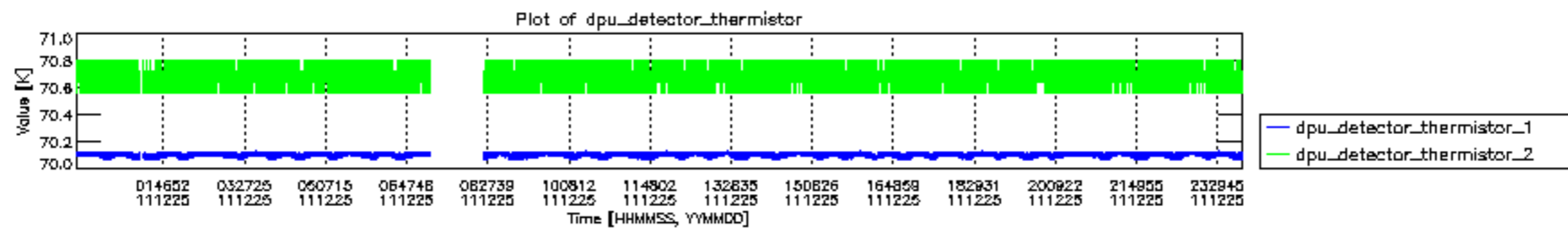


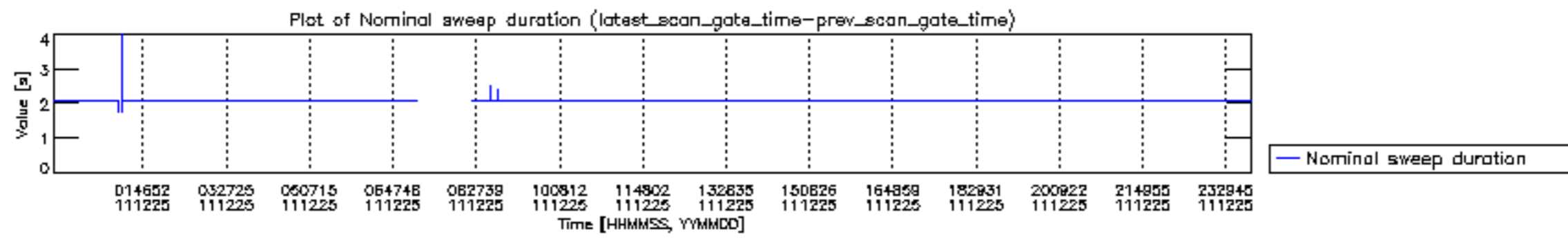
mipas_daily_report_level0_KSPT_L0_4504_N_20111225_13.PNG

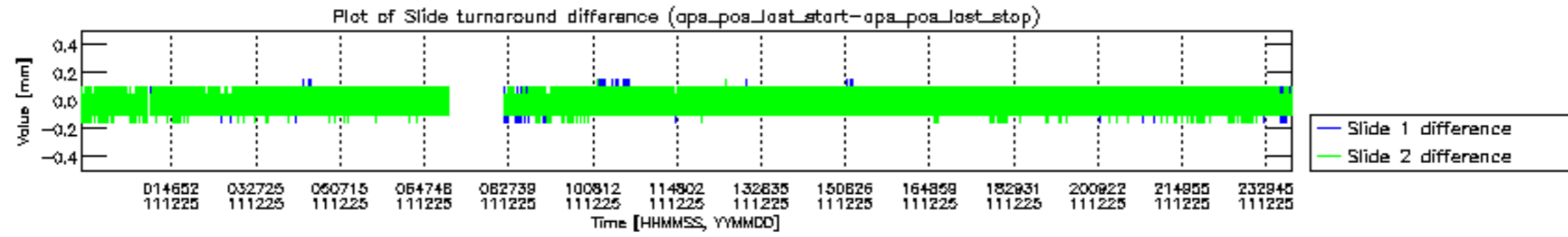


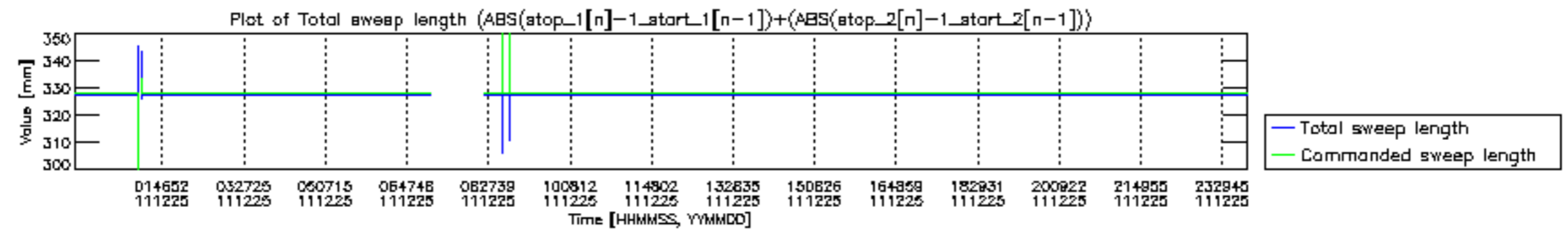


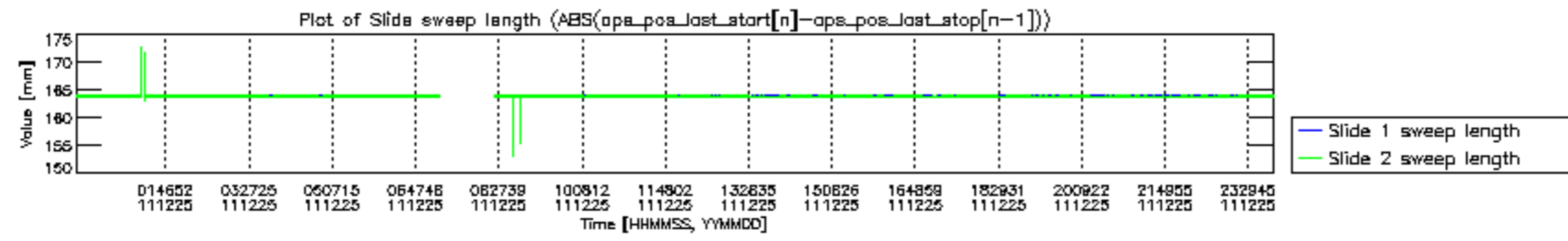


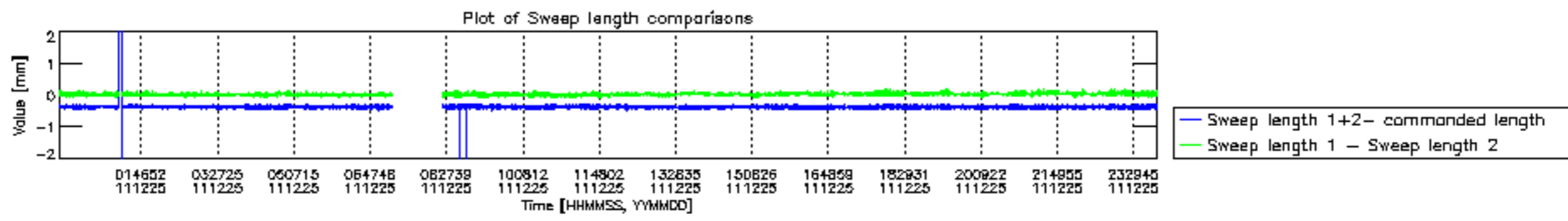


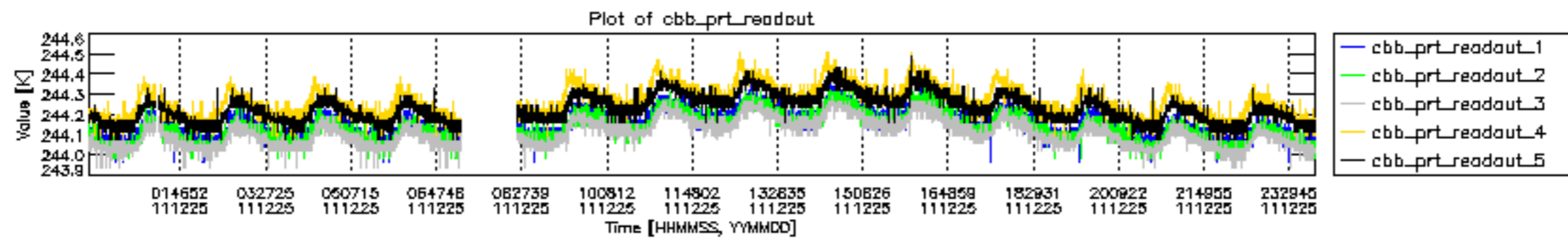


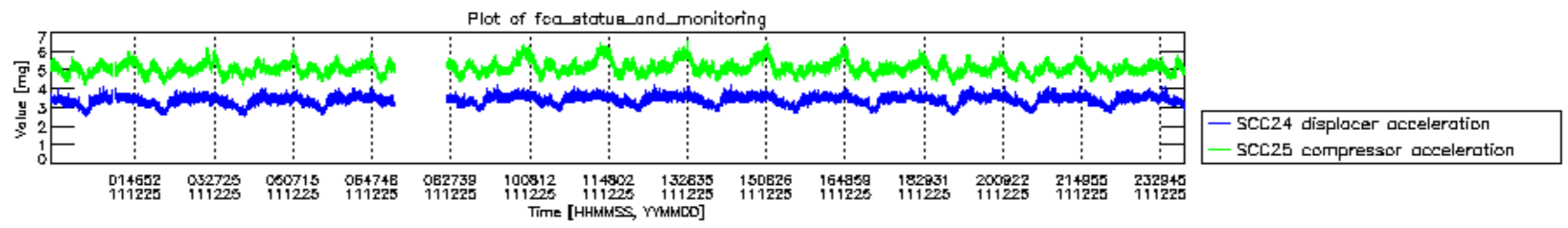












MIPNLOP_MIPSOUPAC_aux_fields_igm_cal, channel statistics plot
 Colour indicates value.

