

0. MIPAS Daily Report for level 0 products

[0.1 General Info](#)

[0.2 Instrument Operational Performance Parameters](#)

[0.3 ADF monitoring](#)

0.1 General Info

This report contains a daily analysis on parameters extracted from MIPAS level 0 data (The MIP_NL__0P product).

0.1.1 Report summary

The table below shows general characteristics of the data that are included into this report.

Item	Value
Report version	v1.6 08-11-2010
Time of report generation	29DEC2011 05:23:52
Data source version	KSPT_L0/4504-N
Processing scope for products	24DEC2011 00:00:00 to 25DEC2011 00:00:00
Start time of first product within scope	24DEC2011 00:00:03
Stop time of last product within scope	25DEC2011 01:05:08
Total number of level 0 products	16
Number of level 0 products with errors	2

0.1.2 Product Quality Indicators per product

The following table shows a summary for each product used in this report.

#	Product name	Start time	Stop time	Prod err	ISP err sign	ISP miss sign	ISP disc sign	rs sign
0	MIP_NL__0PNPDE20111224_000003_000059473110_00030_51337_5200.N1	24DEC2011 00:00:03	24DEC2011 01:39:10	0	0	0	0	0
1	MIP_NL__0PNPDE20111224_013814_000043603110_00031_51338_5201.N1	24DEC2011 01:38:14	24DEC2011 02:50:54	1	1	0	0	0
2	MIP_NL__0PNPDE20111224_025020_000061943110_00032_51339_5202.N1	24DEC2011 02:50:20	24DEC2011 04:33:34	0	0	0	0	0
3	MIP_NL__0PNPDE20111224_043301_000060373110_00033_51340_5203.N1	24DEC2011 04:33:01	24DEC2011 06:13:38	0	0	0	0	0
4	MIP_NL__0PNPDK20111224_061305_000040673110_00034_51341_7881.N1	24DEC2011 06:13:05	24DEC2011 07:20:52	0	0	0	0	0
5	MIP_NL__0PNPDK20111224_071953_000061983110_00035_51342_7882.N1	24DEC2011 07:19:53	24DEC2011 09:03:11	1	1	1	0	0
6	MIP_NL__0PNPDK20111224_090133_000058613110_00036_51343_7884.N1	24DEC2011 09:01:33	24DEC2011 10:39:14	0	0	0	0	0
7	MIP_NL__0PNPDK20111224_103805_000060963110_00037_51344_7885.N1	24DEC2011 10:38:05	24DEC2011 12:19:41	0	0	0	0	0
8	MIP_NL__0PNPDK20111224_121826_000060143110_00038_51345_7886.N1	24DEC2011 12:18:26	24DEC2011 13:58:40	0	0	0	0	0
9	MIP_NL__0PNPDK20111224_135715_000059933110_00039_51346_7887.N1	24DEC2011 13:57:15	24DEC2011 15:37:08	0	0	0	0	0
10	MIP_NL__0PNPDK20111224_153622_000057913110_00040_51347_7888.N1	24DEC2011 15:36:22	24DEC2011 17:12:53	0	0	0	0	0
11	MIP_NL__0PNPDK20111224_171150_000059333110_00041_51348_7889.N1	24DEC2011 17:11:50	24DEC2011 18:50:43	0	0	0	0	0
12	MIP_NL__0PNPDK20111224_184936_000060353110_00042_51349_7890.N1	24DEC2011 18:49:36	24DEC2011 20:30:11	0	0	0	0	0
13	MIP_NL__0PNPDE20111224_202825_000044433110_00043_51350_5204.N1	24DEC2011 20:28:25	24DEC2011 21:42:28	0	0	0	0	0
14	MIP_NL__0PNPDE20111224_214130_000061333110_00043_51350_5205.N1	24DEC2011 21:41:30	24DEC2011 23:23:43	0	0	0	0	0
15	MIP_NL__0PNPDE20111224_232240_000061483110_00044_51351_5206.N1	24DEC2011 23:22:40	25DEC2011 01:05:08	0	0	0	0	0

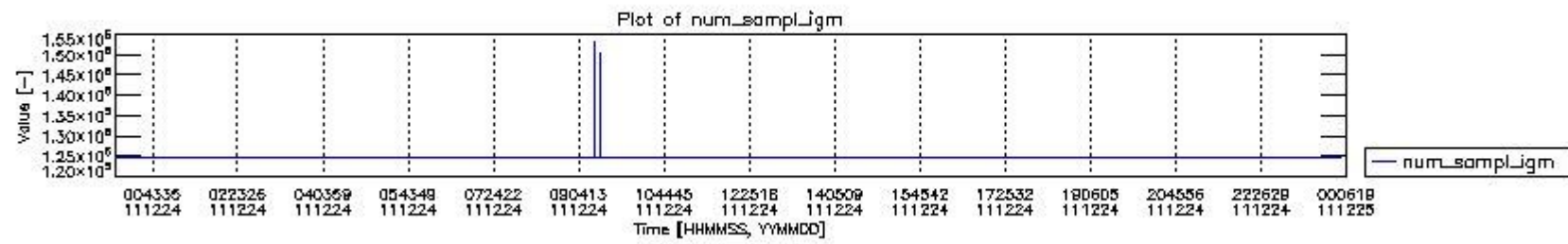
0.2 Instrument Operational Performance Parameters

The following plots give an overview of various instrument parameters for this day. The instrument parameters are part of the auxiliary data field within the source packets of the MIP_NL__0P product. The auxiliary data is normally included twice per interferogram. Note that only the first packet is currently included in monitoring.

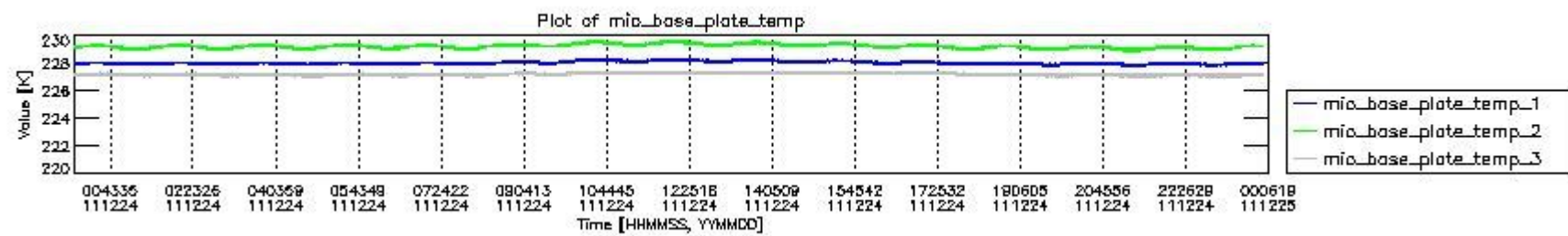
The following table shows the counts of various interferogram number of samples

Number of igm samples	Count [#]	Count [%]
124800	38688	92.897277
124803	2952	7.0883158

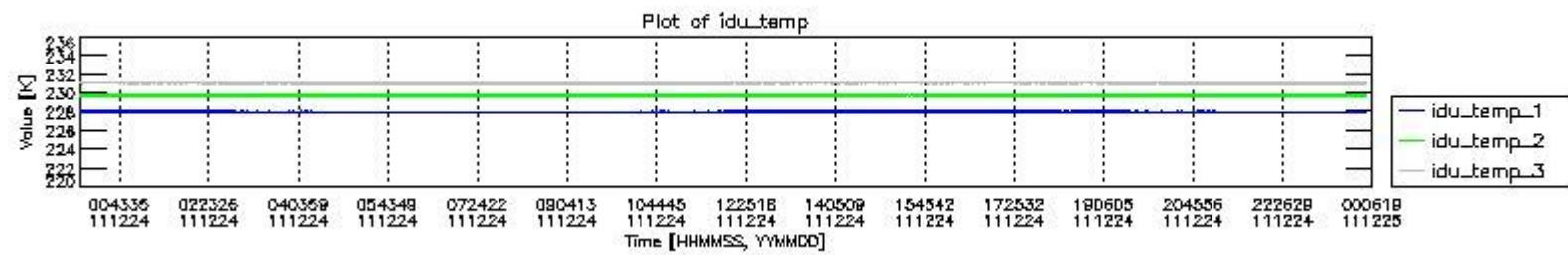
127605	1	0.0024011910
129017	1	0.0024011910
147737	1	0.0024011910
149149	1	0.0024011910
150542	1	0.0024011910
153366	1	0.0024011910



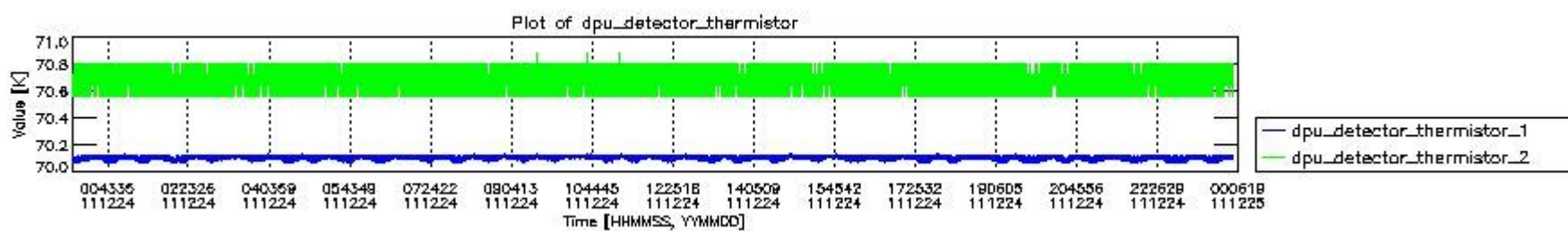
mipas_daily_report_level0_KSPT_L0_4504_N_20111224_0.PNG



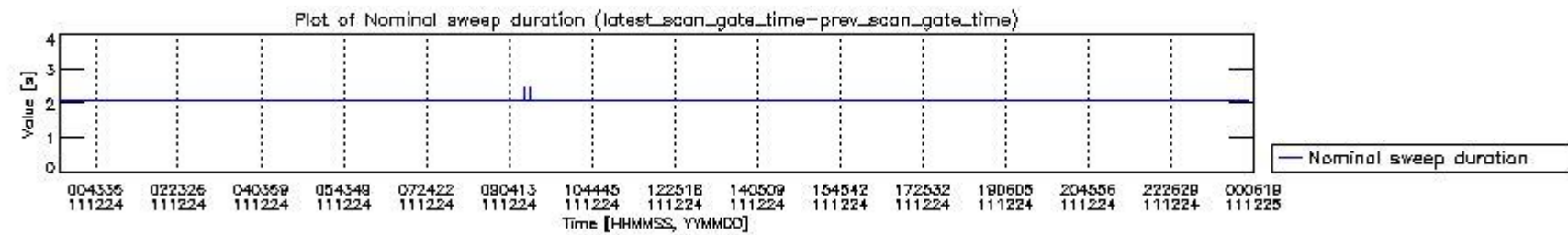
mipas_daily_report_level0_KSPT_L0_4504_N_20111224_1.PNG



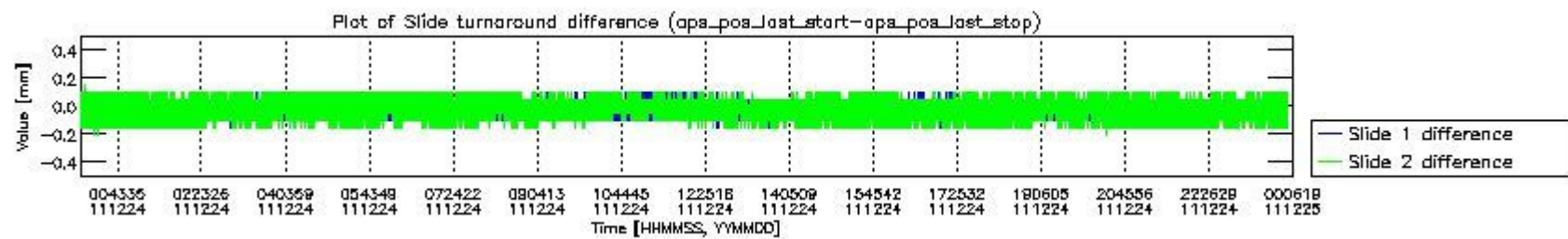
mipas_daily_report_level0_KSPT_L0_4504_N_20111224_2.PNG



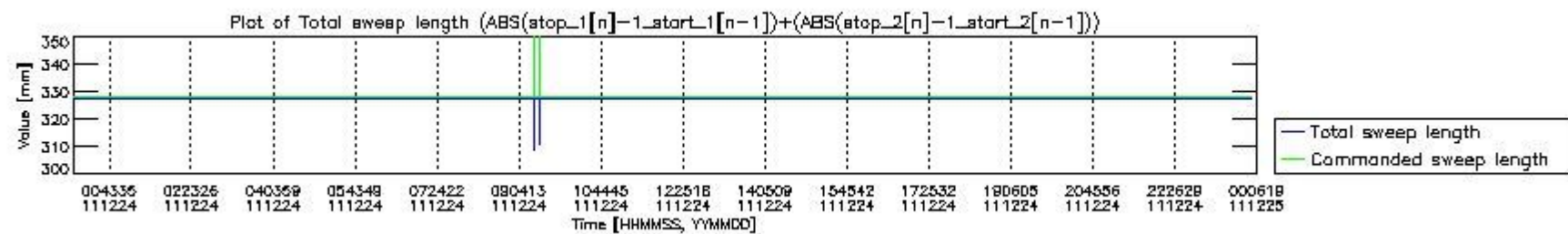
mipas_daily_report_level0_KSPT_L0_4504_N_20111224_3.PNG



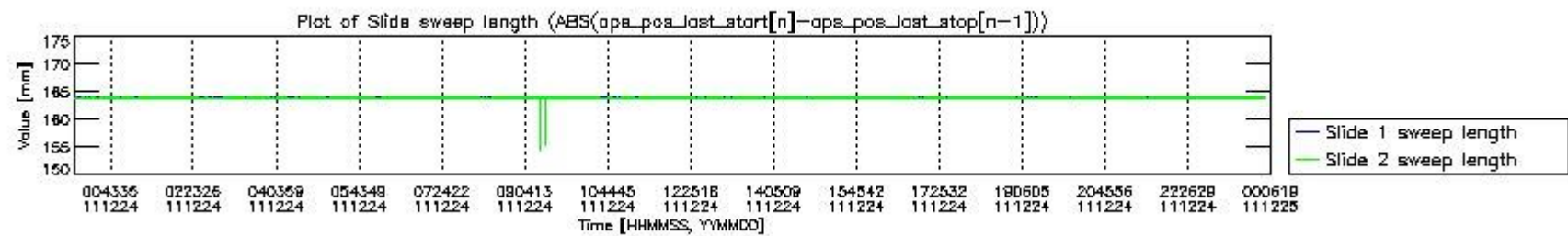
mipas_daily_report_level0_KSPT_L0_4504_N_20111224_4.PNG



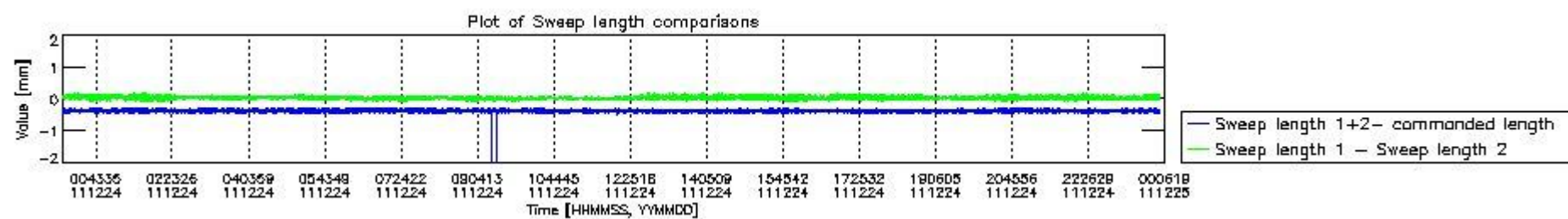
mipas_daily_report_level0_KSPT_L0_4504_N_20111224_5.PNG



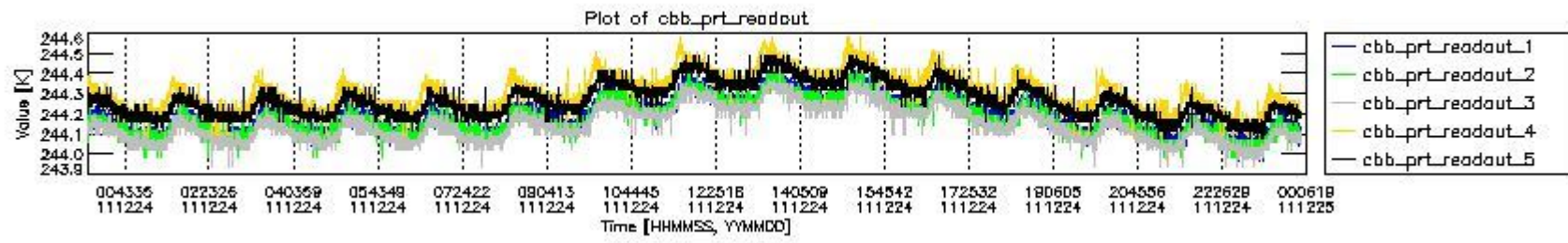
mipas_daily_report_level0_KSPT_L0_4504_N_20111224_6.PNG



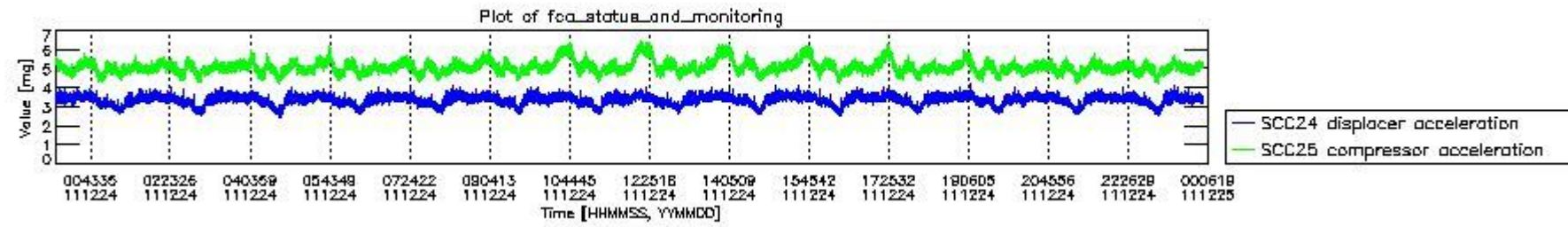
mipas_daily_report_level0_KSPT_L0_4504_N_20111224_7.PNG



mipas_daily_report_level0_KSPT_L0_4504_N_20111224_8.PNG



mipas_daily_report_level0_KSPT_L0_4504_N_20111224_9.PNG

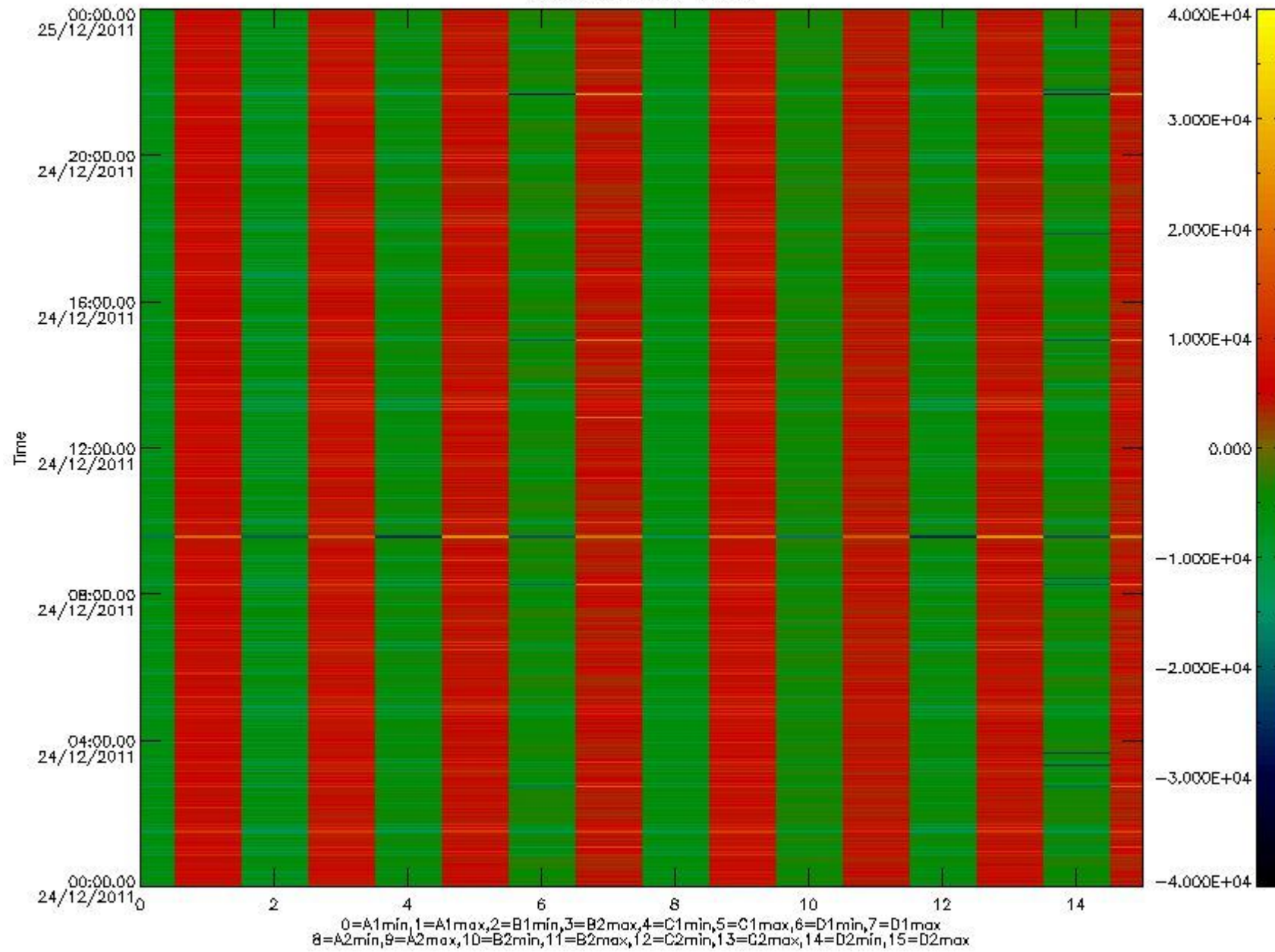


mipas_daily_report_level0_KSPT_L0_4504_N_20111224_10.PNG

The following table shows channel statistics for all channels for this day.

Channel	Min	Max	ADC
A1	-18028	19061	16bit
B1	-20277	17451	16bit
C1	-24497	24435	16bit
D1	-32768	32767	16bit
A2	-15671	19283	16bit
B2	-18117	17792	16bit
C2	-25524	25137	16bit
D2	-32768	32767	16bit

MIPNLOP_MIPSOUPAC_aux_fields_igm_cal, channel statistics plot
Colour indicates value.



mipas_daily_report_level0_KSPT_L0_4504_N_20111224_11.PNG

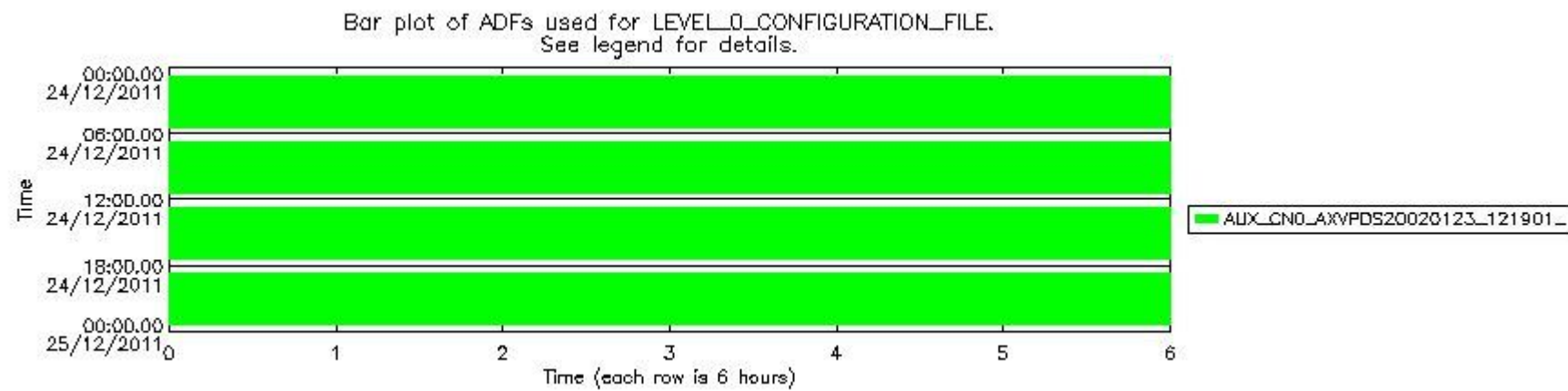
0.3 ADF monitoring

The use of ADFs is shown in two ways:

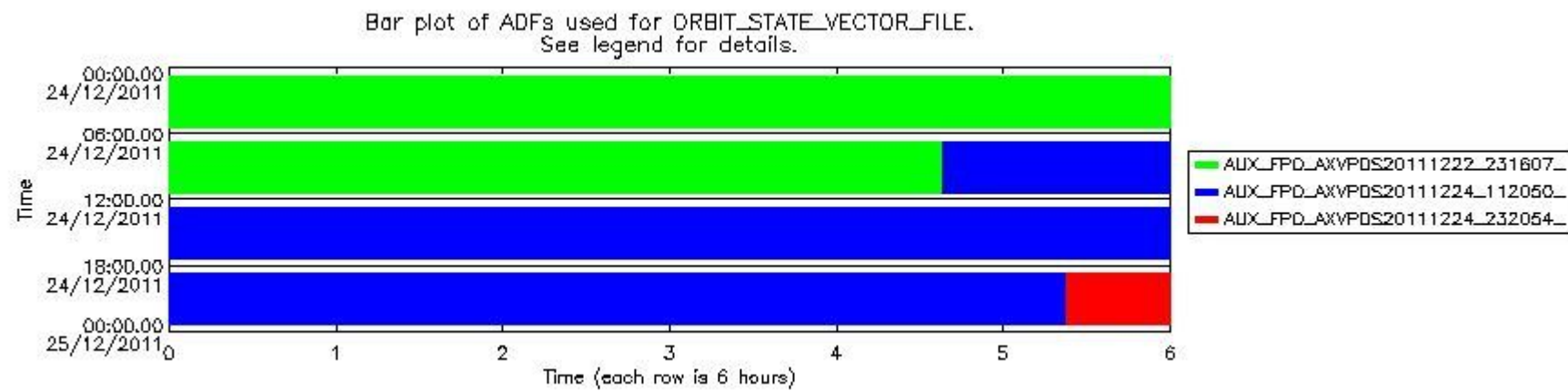
1. By means of two tables that can be used to find the ADF used for a specific product.
2. By means of plots that show changes in ADF using colours.

Number	ADF
0	AUX_CN0_AXVPDS20020123_121901_20020101_000000_20200101_000000
1	AUX_FPO_AXVPDS20111222_231607_20111221_184355_20111231_205737
2	AUX_FPO_AXVPDS20111224_112050_20111223_191039_20120102_212421
3	AUX_FPO_AXVPDS20111224_232054_20111224_183354_20120103_204736

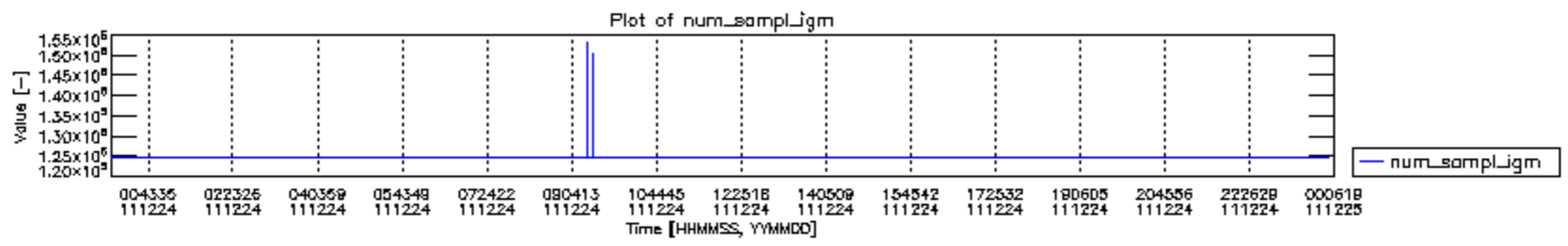
Number	Product name	#CNO	#FPO
0	MIP_NL__0PNPDE20111224_000003_000059473110_00030_51337_5200.N1	0	1
1	MIP_NL__0PNPDE20111224_013814_000043603110_00031_51338_5201.N1	0	1
2	MIP_NL__0PNPDE20111224_025020_000061943110_00032_51339_5202.N1	0	1
3	MIP_NL__0PNPDE20111224_043301_000060373110_00033_51340_5203.N1	0	1
4	MIP_NL__0PNPDK20111224_061305_000040673110_00034_51341_7881.N1	0	1
5	MIP_NL__0PNPDK20111224_071953_000061983110_00035_51342_7882.N1	0	1
6	MIP_NL__0PNPDK20111224_090133_000058613110_00036_51343_7884.N1	0	1
7	MIP_NL__0PNPDK20111224_103805_000060963110_00037_51344_7885.N1	0	2
8	MIP_NL__0PNPDK20111224_121826_000060143110_00038_51345_7886.N1	0	2
9	MIP_NL__0PNPDK20111224_135715_000059933110_00039_51346_7887.N1	0	2
10	MIP_NL__0PNPDK20111224_153622_000057913110_00040_51347_7888.N1	0	2
11	MIP_NL__0PNPDK20111224_171150_000059333110_00041_51348_7889.N1	0	2
12	MIP_NL__0PNPDK20111224_184936_000060353110_00042_51349_7890.N1	0	2
13	MIP_NL__0PNPDE20111224_202825_000044433110_00043_51350_5204.N1	0	2
14	MIP_NL__0PNPDE20111224_214130_000061333110_00043_51350_5205.N1	0	2
15	MIP_NL__0PNPDE20111224_232240_000061483110_00044_51351_5206.N1	0	3

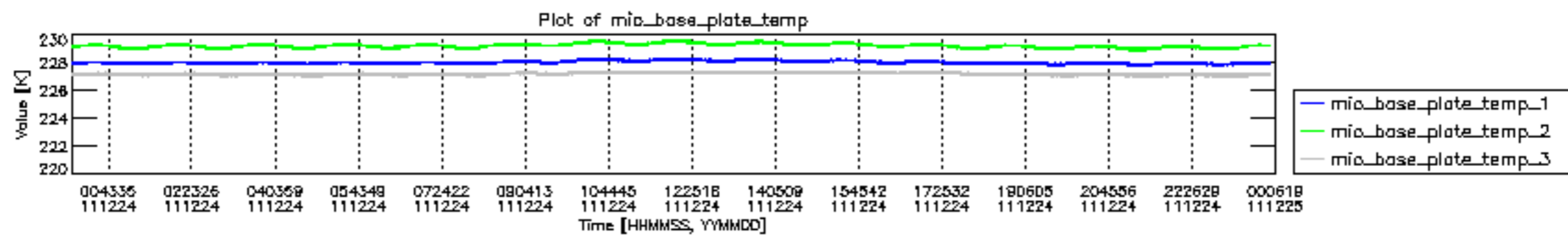


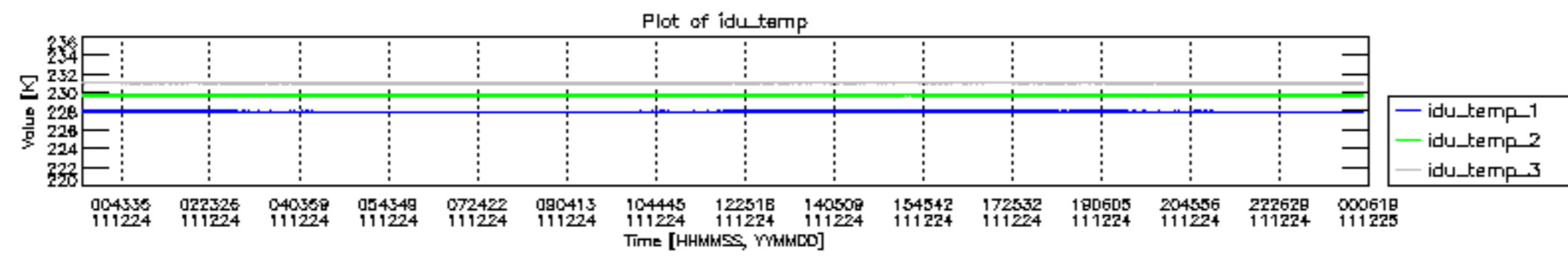
mipas_daily_report_level0_KSPT_L0_4504_N_20111224_12.PNG

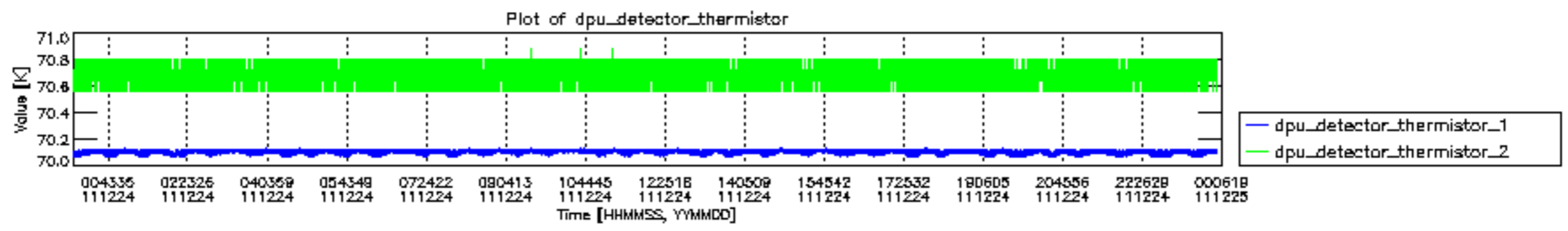


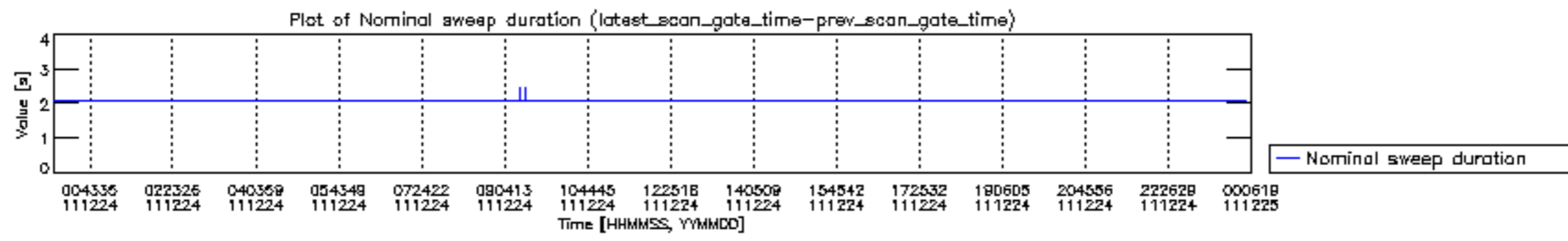
mipas_daily_report_level0_KSPT_L0_4504_N_20111224_13.PNG

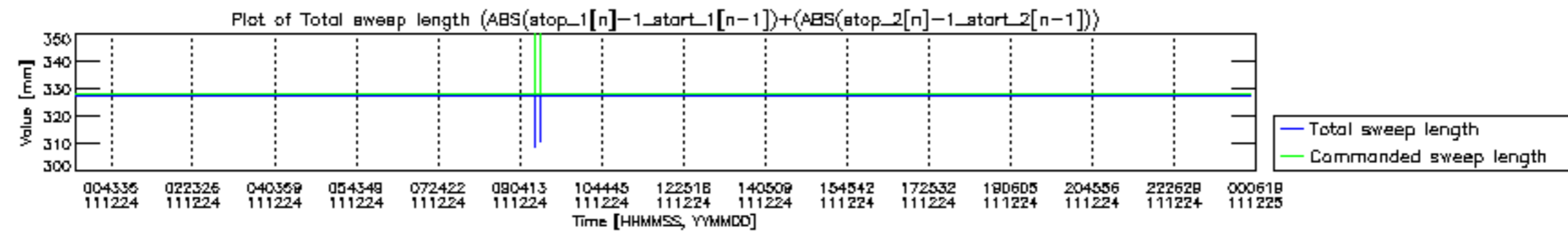


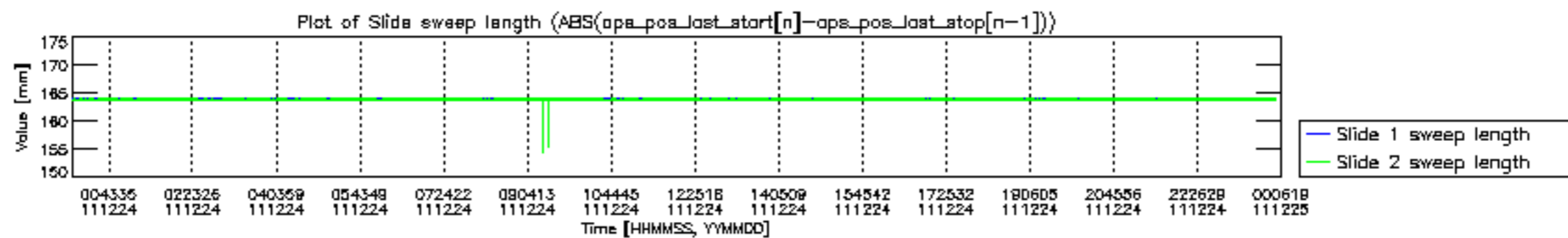


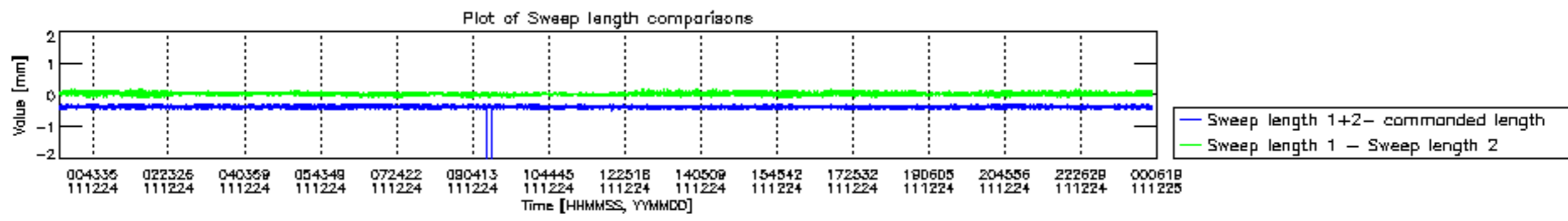


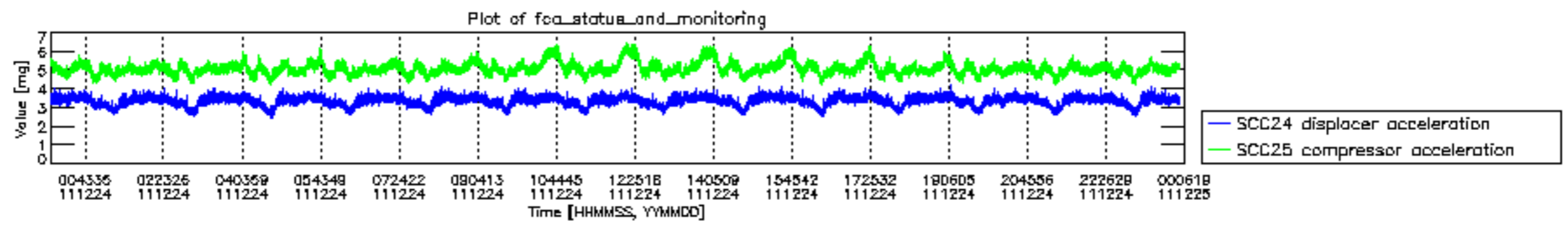












MIPNLOP_MIPSOUPAC_aux_fields_igm_cal, channel statistics plot
 Colour indicates value.

