

0. MIPAS Daily Report for level 0 products

[0.1 General Info](#)

[0.2 Instrument Operational Performance Parameters](#)

[0.3 ADF monitoring](#)

0.1 General Info

This report contains a daily analysis on parameters extracted from MIPAS level 0 data (The MIP_NL__0P product).

0.1.1 Report summary

The table below shows general characteristics of the data that are included into this report.

Item	Value
Report version	v1.6 08-11-2010
Time of report generation	23DEC2011 05:24:21
Data source version	KSPT_L0/4504-N
Processing scope for products	18DEC2011 00:00:00 to 19DEC2011 00:00:00
Start time of first product within scope	18DEC2011 00:18:36
Stop time of last product within scope	19DEC2011 01:24:23
Total number of level 0 products	15
Number of level 0 products with errors	0

0.1.2 Product Quality Indicators per product

The following table shows a summary for each product used in this report.

#	Product name	Start time	Stop time	Prod err	ISP err sign	ISP miss sign	ISP disc sign	rs sign
0	MIP_NL__0PNPDE20111218_001836_000059313109_00375_51251_0433.N1	18DEC2011 00:18:36	18DEC2011 01:57:27	0	0	0	0	0
1	MIP_NL__0PNPDE20111218_015628_000044773109_00376_51252_0434.N1	18DEC2011 01:56:28	18DEC2011 03:11:05	0	0	0	0	0
2	MIP_NL__0PNPDE20111218_045224_000060523109_00378_51254_0436.N1	18DEC2011 04:52:24	18DEC2011 06:33:16	0	0	0	0	0
3	MIP_NL__0PNPDK20111218_063243_000040723109_00379_51255_7823.N1	18DEC2011 06:32:43	18DEC2011 07:40:34	0	0	0	0	0
4	MIP_NL__0PNPDK20111218_073936_000060833109_00380_51256_7825.N1	18DEC2011 07:39:36	18DEC2011 09:20:59	0	0	0	0	0
5	MIP_NL__0PNPDK20111218_091919_000060923109_00381_51257_7826.N1	18DEC2011 09:19:19	18DEC2011 11:00:51	0	0	0	0	0
6	MIP_NL__0PNPDK20111218_105911_000060193109_00382_51258_7827.N1	18DEC2011 10:59:11	18DEC2011 12:39:29	0	0	0	0	0
7	MIP_NL__0PNPDK20111218_123818_000060193109_00383_51259_7828.N1	18DEC2011 12:38:18	18DEC2011 14:18:37	0	0	0	0	0
8	MIP_NL__0PNPDK20111218_141738_000059043109_00384_51260_7829.N1	18DEC2011 14:17:38	18DEC2011 15:56:02	0	0	0	0	0
9	MIP_NL__0PNPDK20111218_155524_000057413109_00385_51261_7830.N1	18DEC2011 15:55:24	18DEC2011 17:31:05	0	0	0	0	0
10	MIP_NL__0PNPDK20111218_172958_000058893109_00386_51262_7831.N1	18DEC2011 17:29:58	18DEC2011 19:08:07	0	0	0	0	0
11	MIP_NL__0PNPDK20111218_190704_000061673109_00387_51263_7832.N1	18DEC2011 19:07:04	18DEC2011 20:49:51	0	0	0	0	0
12	MIP_NL__0PNPDE20111218_204813_000044483109_00388_51264_0437.N1	18DEC2011 20:48:13	18DEC2011 22:02:21	0	0	0	0	0
13	MIP_NL__0PNPDE20111218_220124_000062173109_00388_51264_0438.N1	18DEC2011 22:01:24	18DEC2011 23:45:01	0	0	0	0	0
14	MIP_NL__0PNPDE20111218_234354_000060293109_00389_51265_0439.N1	18DEC2011 23:43:54	19DEC2011 01:24:23	0	0	0	0	0

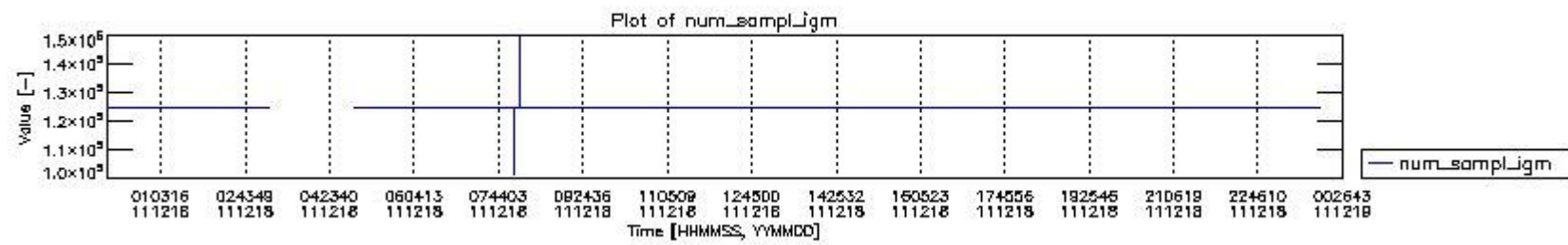
0.2 Instrument Operational Performance Parameters

The following plots give an overview of various instrument parameters for this day. The instrument parameters are part of the auxiliary data field within the source packets of the MIP_NL__0P product. The auxiliary data is normally included twice per interferogram. Note that only the first packet is currently included in monitoring.

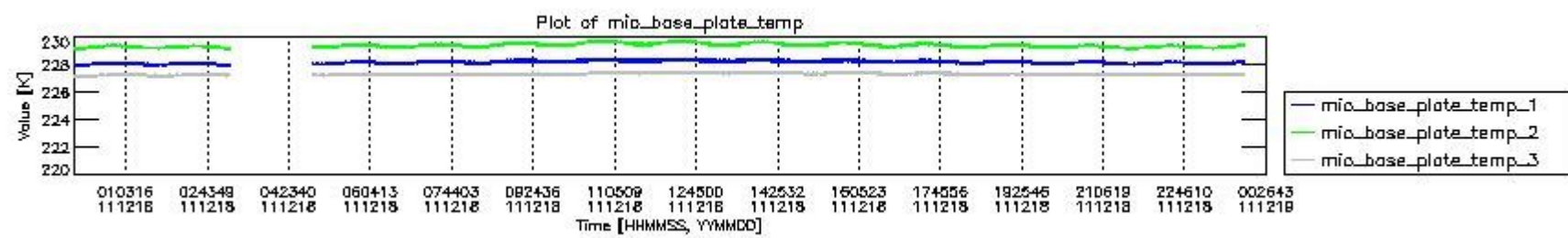
The following table shows the counts of various interferogram number of samples

Number of igm samples	Count [#]	Count [%]
101030	1	0.0025799794
102849	1	0.0025799794
122981	1	0.0025799794

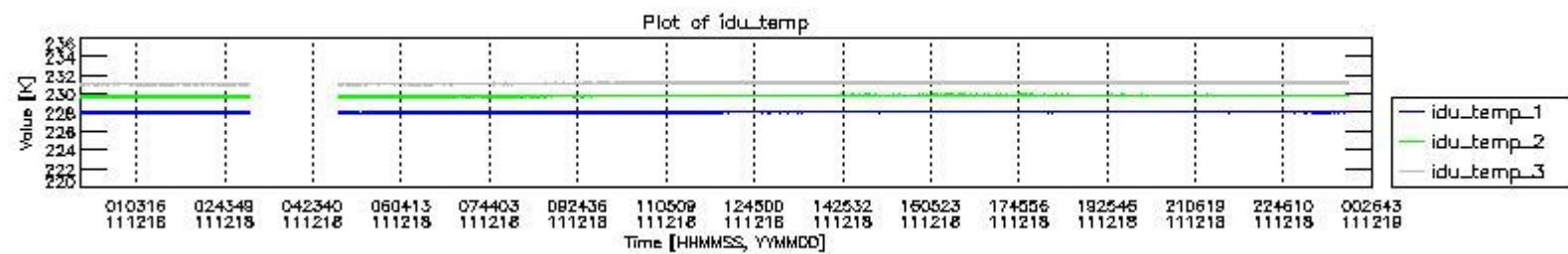
124800	36005	92.892157
124803	2749	7.0923633
127308	1	0.0025799794
147440	1	0.0025799794
149948	1	0.0025799794



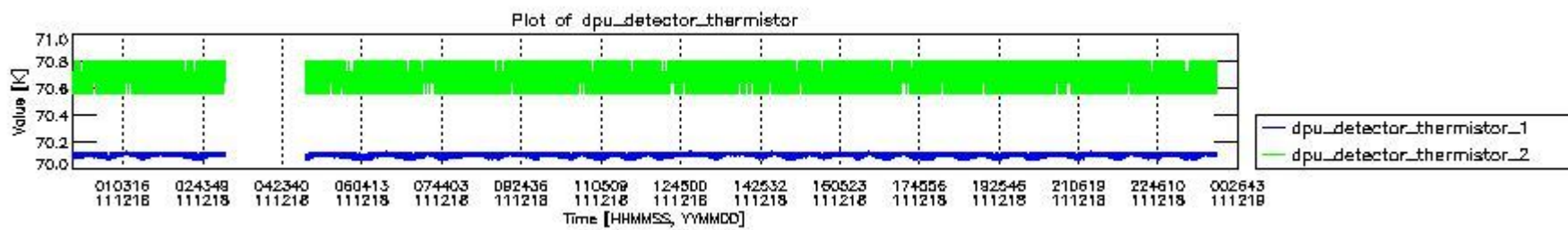
mipas_daily_report_level0_KSPT_L0_4504_N_20111218_0.PNG



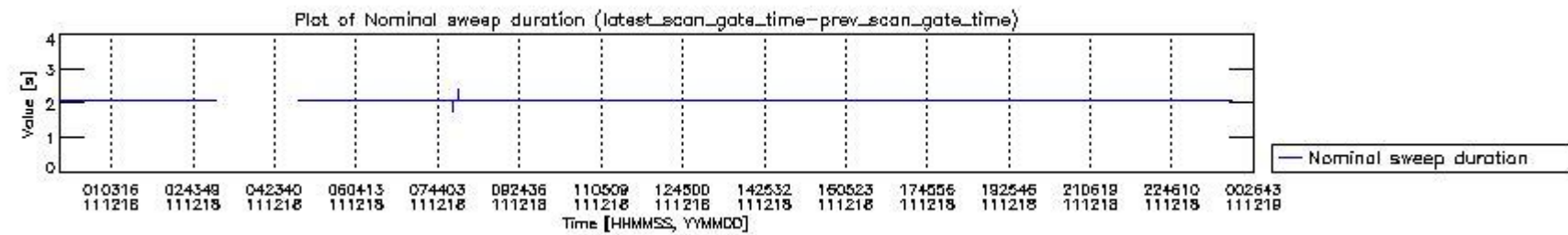
mipas_daily_report_level0_KSPT_L0_4504_N_20111218_1.PNG



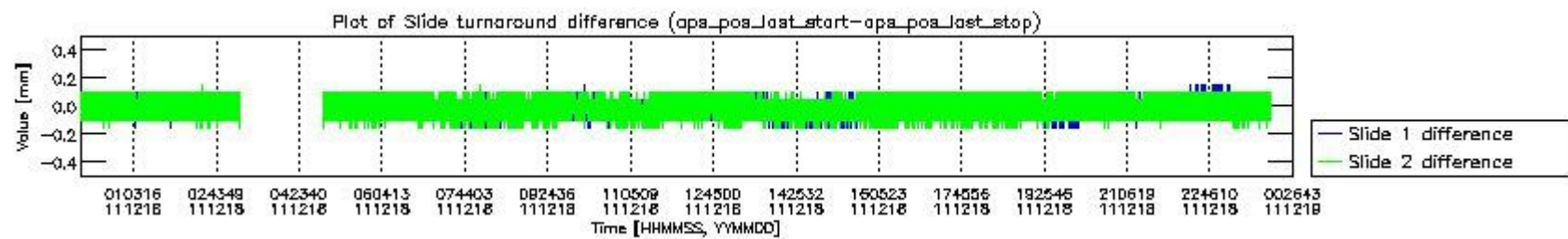
mipas_daily_report_level0_KSPT_L0_4504_N_20111218_2.PNG



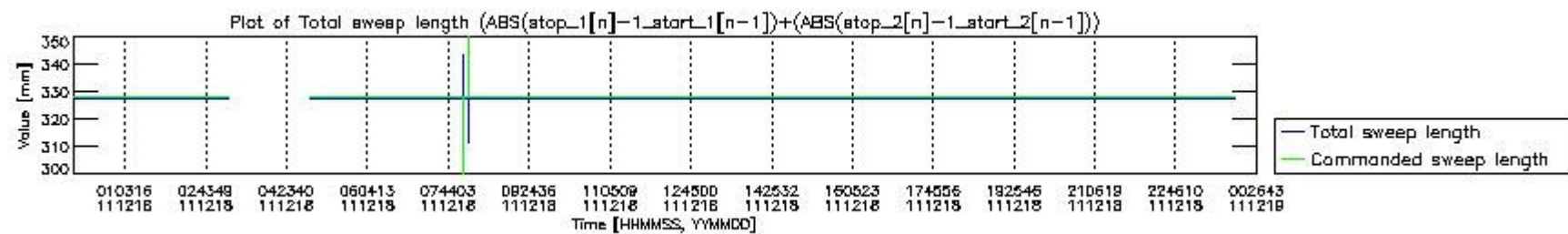
mipas_daily_report_level0_KSPT_L0_4504_N_20111218_3.PNG



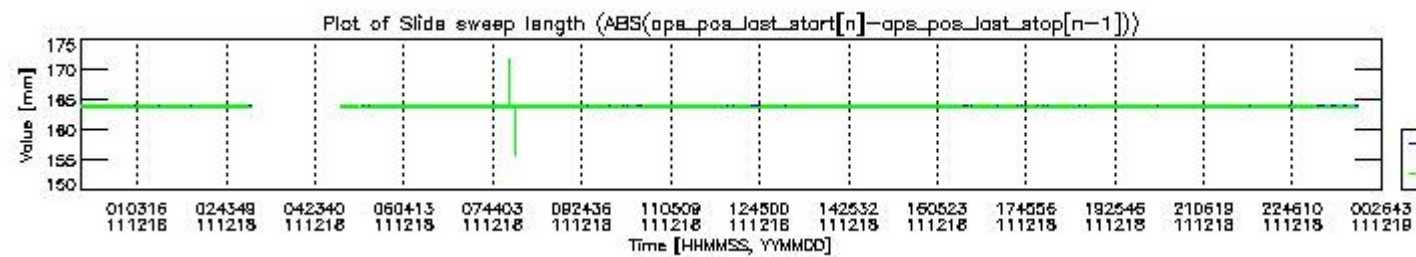
mipas_daily_report_level0_KSPT_L0_4504_N_20111218_4.PNG



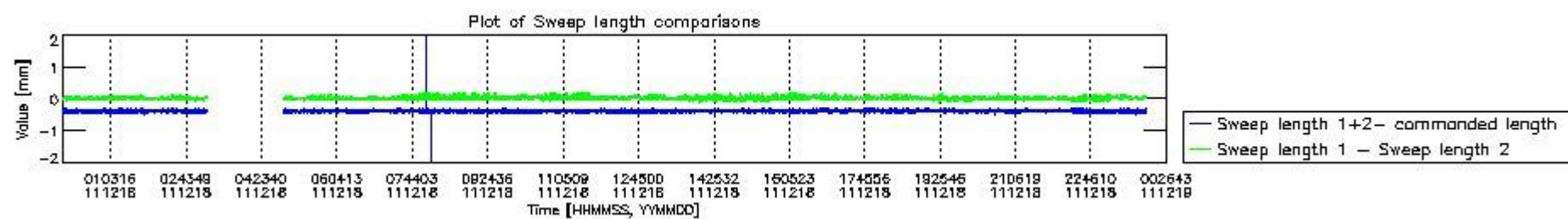
mipas_daily_report_level0_KSPT_L0_4504_N_20111218_5.PNG



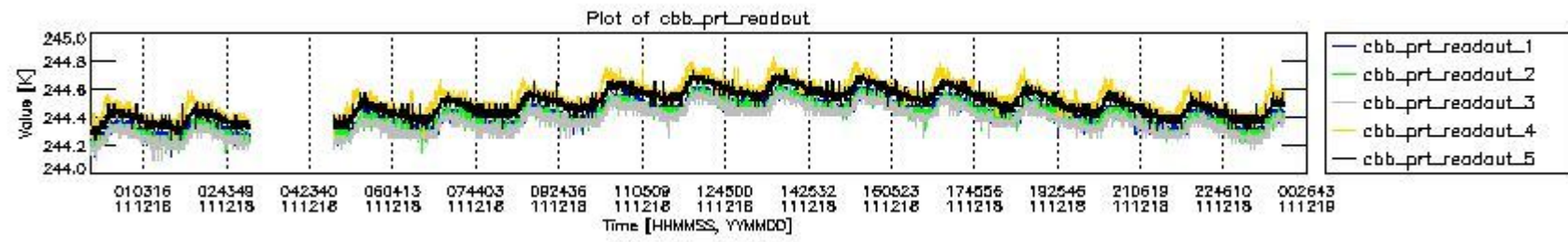
mipas_daily_report_level0_KSPT_L0_4504_N_20111218_6.PNG



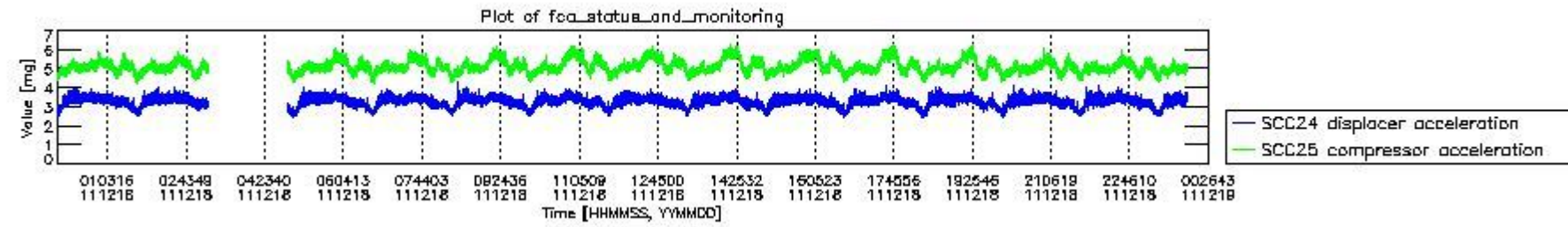
mipas_daily_report_level0_KSPT_L0_4504_N_20111218_7.PNG



mipas_daily_report_level0_KSPT_L0_4504_N_20111218_8.PNG



mipas_daily_report_level0_KSPT_L0_4504_N_20111218_9.PNG

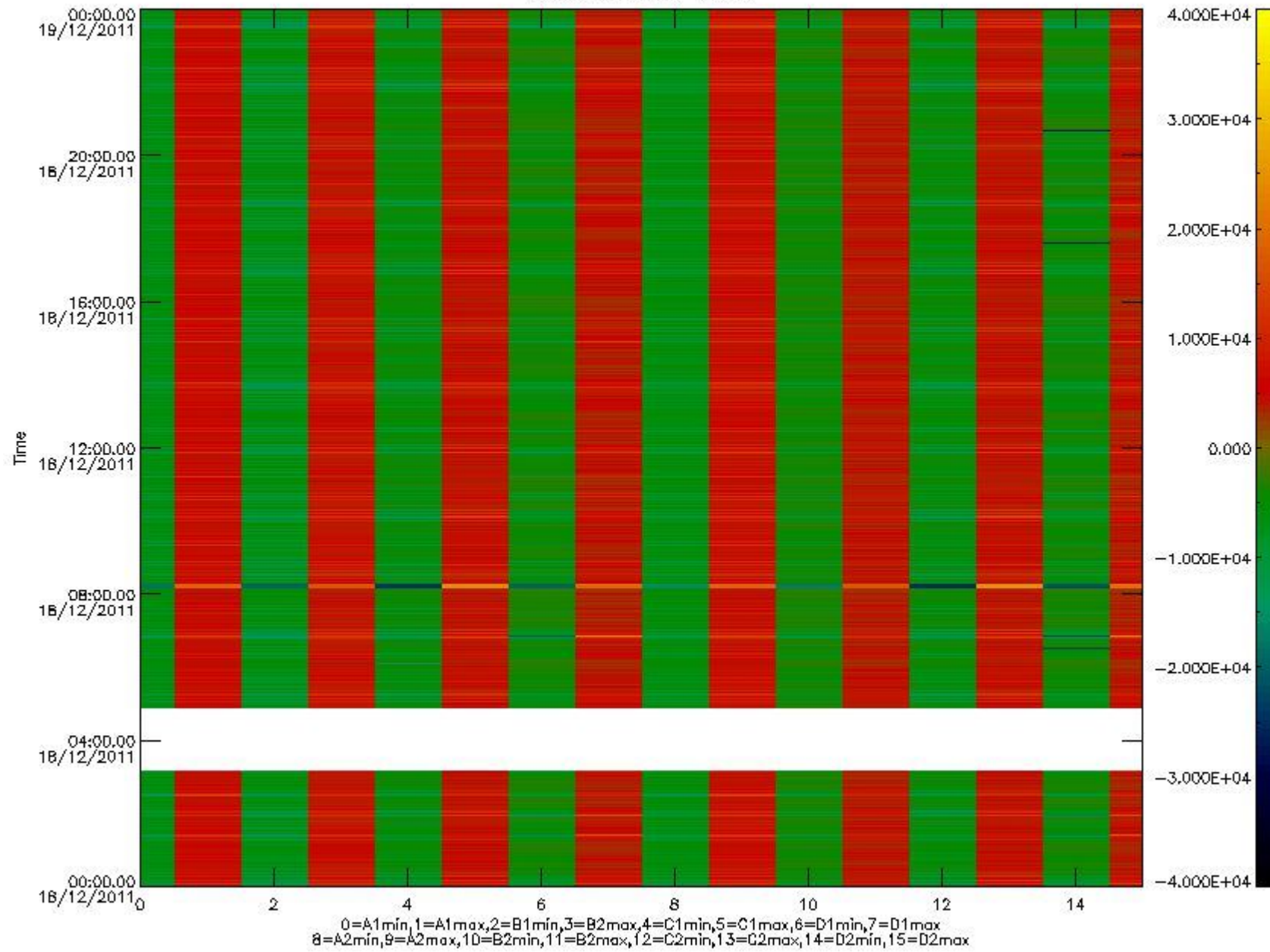


mipas_daily_report_level0_KSPT_L0_4504_N_20111218_10.PNG

The following table shows channel statistics for all channels for this day.

Channel	Min	Max	ADC
A1	-18078	19152	16bit
B1	-20328	17501	16bit
C1	-25181	24451	16bit
D1	-32768	32767	16bit
A2	-15695	19354	16bit
B2	-18182	17841	16bit
C2	-25632	25158	16bit
D2	-32768	32767	16bit

MIPNLOP_MIPSOUPAC_aux_fields_1gm_cal, channel statistics plot
Colour indicates value.



mipas_daily_report_level0_KSPT_L0_4504_N_20111218_11.PNG

0.3 ADF monitoring

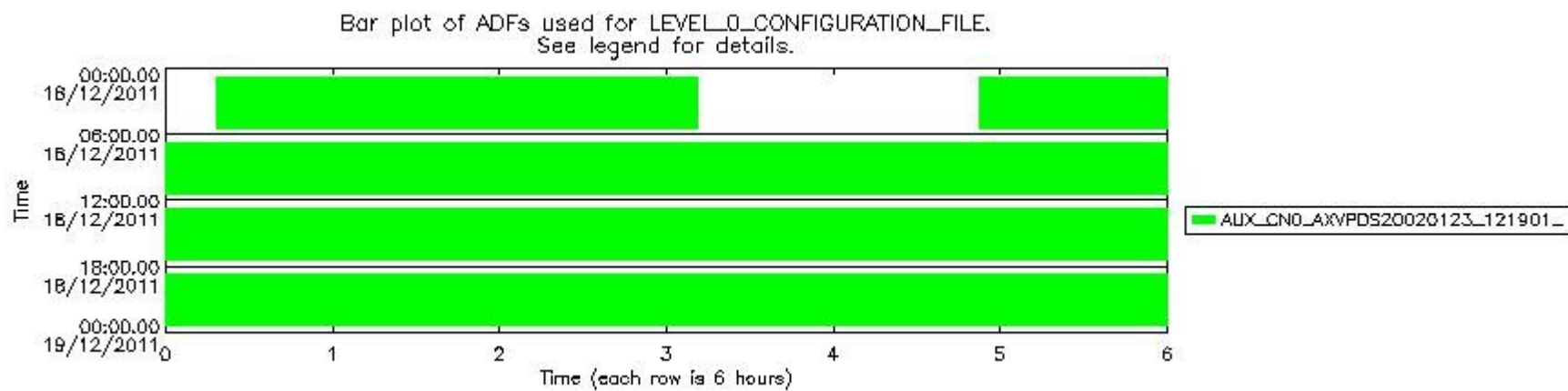
The use of ADFs is shown in two ways:

1. By means of two tables that can be used to find the ADF used for a specific product.
2. By means of plots that show changes in ADF using colours.

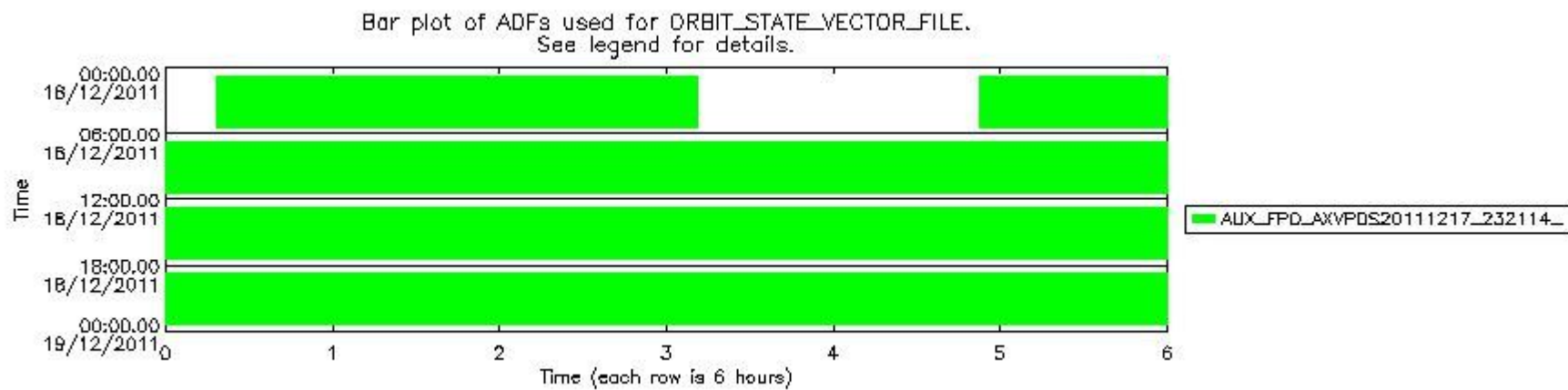
Number	ADF
0	AUX_CN0_AXVPDS20020123_121901_20020101_000000_20200101_000000
1	AUX_FPO_AXVPDS20111217_232114_20111217_193041_20111227_200407

Number	Product name	#CN0	#FPO
0	MIP_NL_0PNPDE20111218_001836_000059313109_00375_51251_0433.N1	0	1

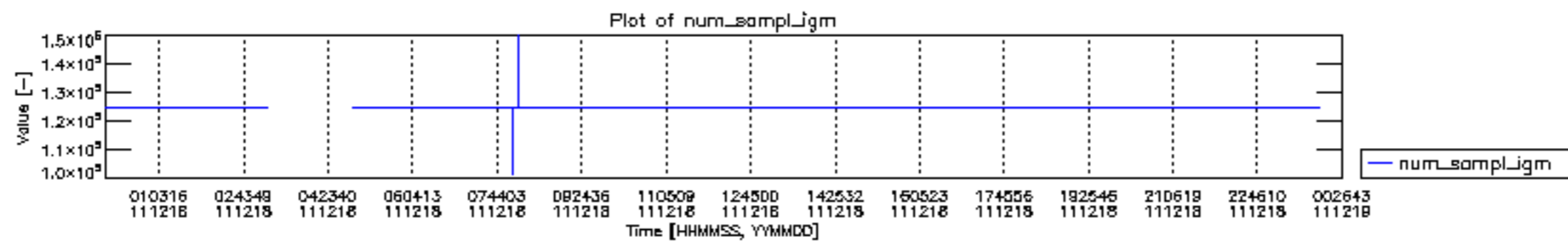
1	MIP_NL__0PNPDE20111218_015628_000044773109_00376_51252_0434.N1	0	1
2	MIP_NL__0PNPDE20111218_045224_000060523109_00378_51254_0436.N1	0	1
3	MIP_NL__0PNPDK20111218_063243_000040723109_00379_51255_7823.N1	0	1
4	MIP_NL__0PNPDK20111218_073936_000060833109_00380_51256_7825.N1	0	1
5	MIP_NL__0PNPDK20111218_091919_000060923109_00381_51257_7826.N1	0	1
6	MIP_NL__0PNPDK20111218_105911_000060193109_00382_51258_7827.N1	0	1
7	MIP_NL__0PNPDK20111218_123818_000060193109_00383_51259_7828.N1	0	1
8	MIP_NL__0PNPDK20111218_141738_000059043109_00384_51260_7829.N1	0	1
9	MIP_NL__0PNPDK20111218_155524_000057413109_00385_51261_7830.N1	0	1
10	MIP_NL__0PNPDK20111218_172958_000058893109_00386_51262_7831.N1	0	1
11	MIP_NL__0PNPDK20111218_190704_000061673109_00387_51263_7832.N1	0	1
12	MIP_NL__0PNPDE20111218_204813_000044483109_00388_51264_0437.N1	0	1
13	MIP_NL__0PNPDE20111218_220124_000062173109_00388_51264_0438.N1	0	1
14	MIP_NL__0PNPDE20111218_234354_000060293109_00389_51265_0439.N1	0	1

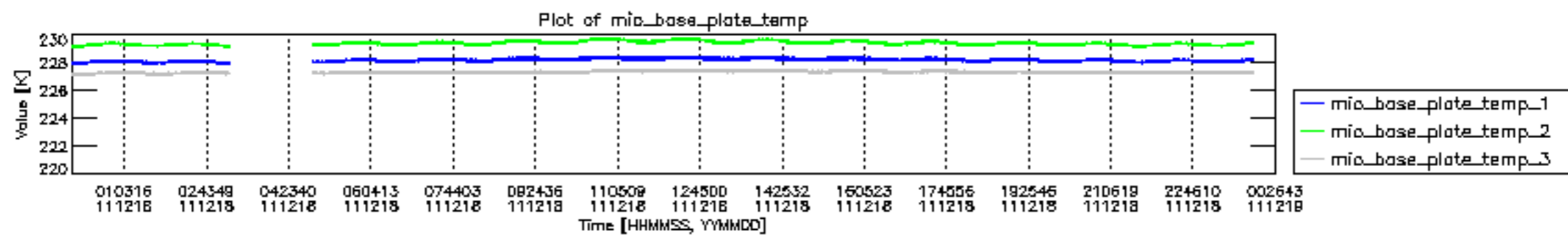


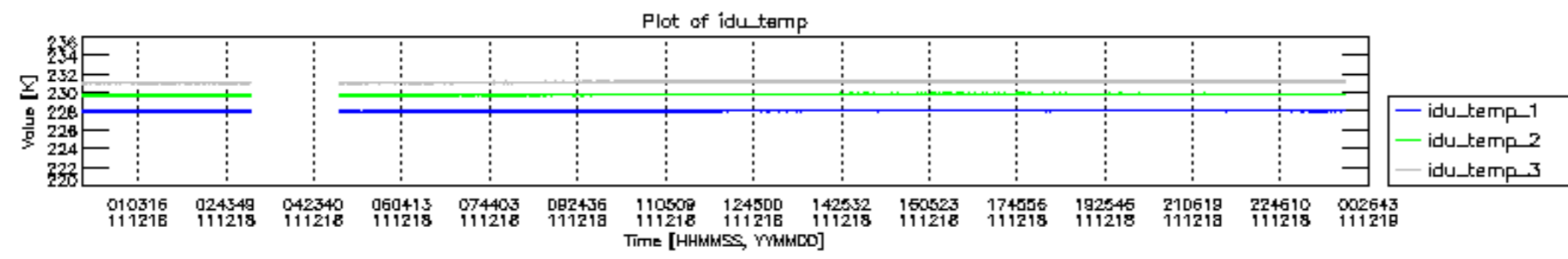
mipas_daily_report_level0_KSPT_L0_4504_N_20111218_12.PNG

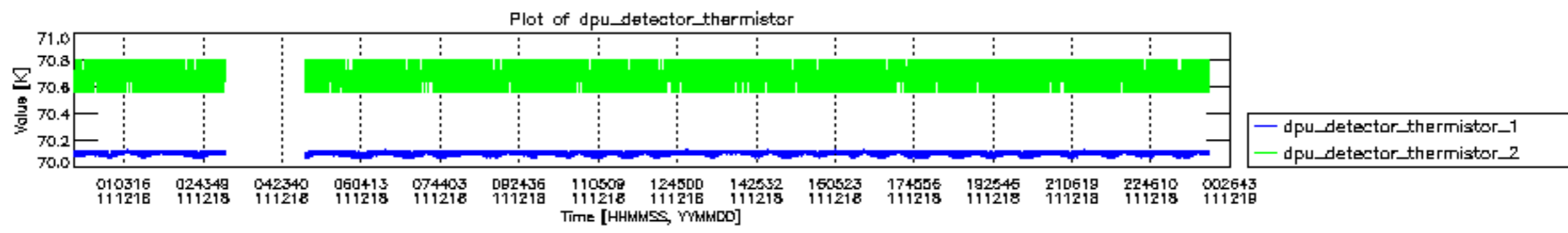


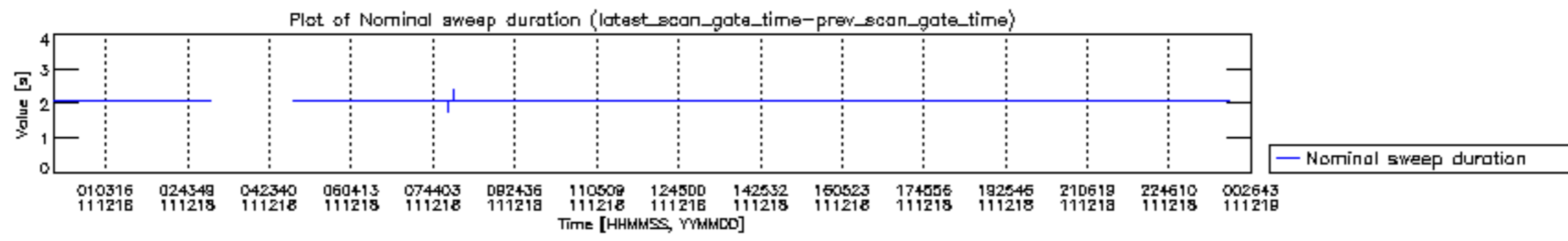
mipas_daily_report_level0_KSPT_L0_4504_N_20111218_13.PNG

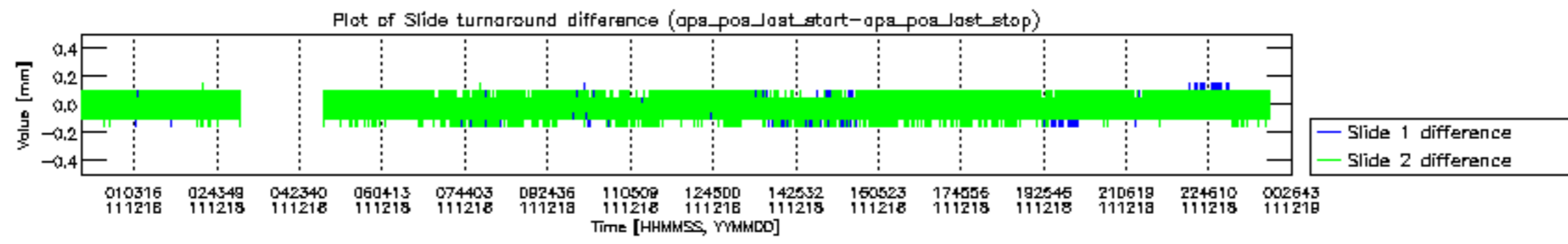


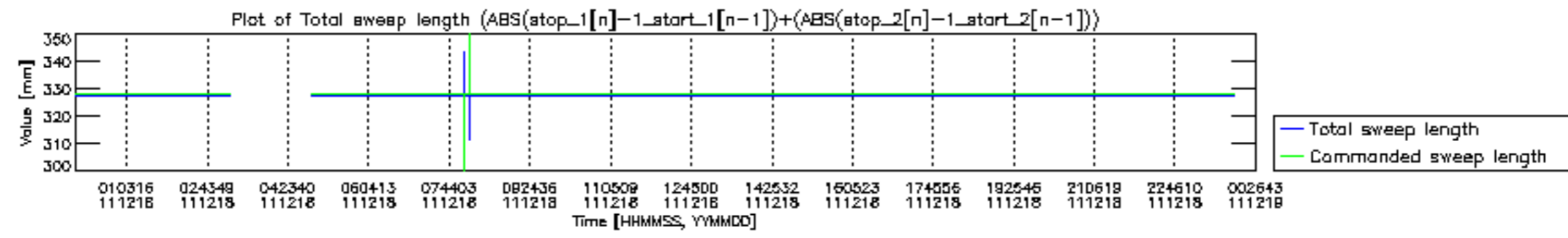


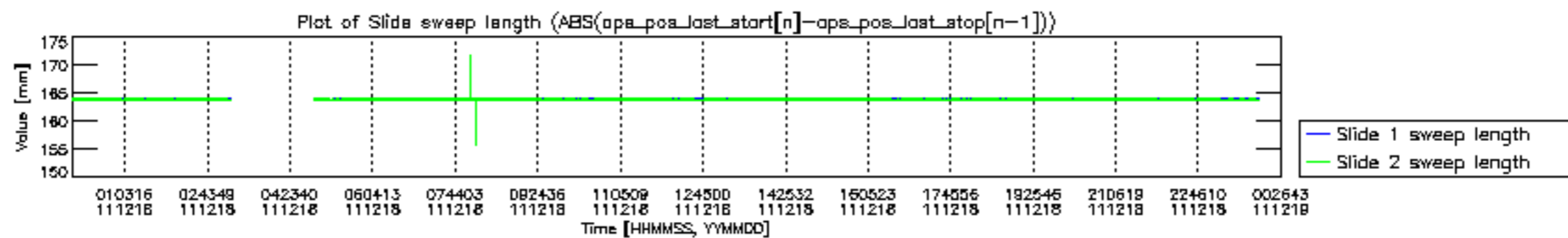


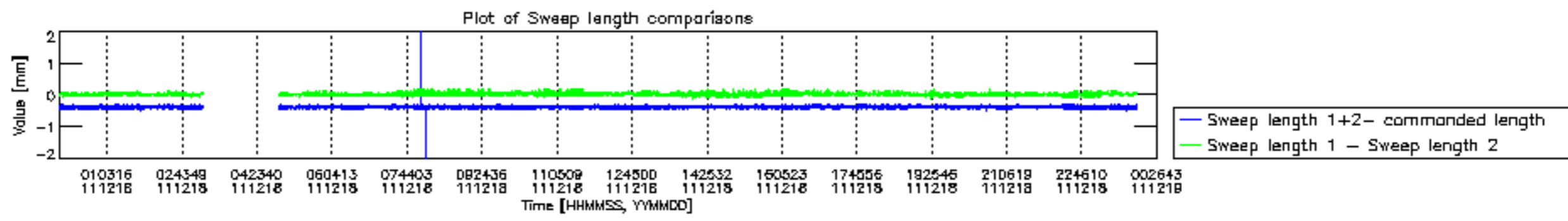


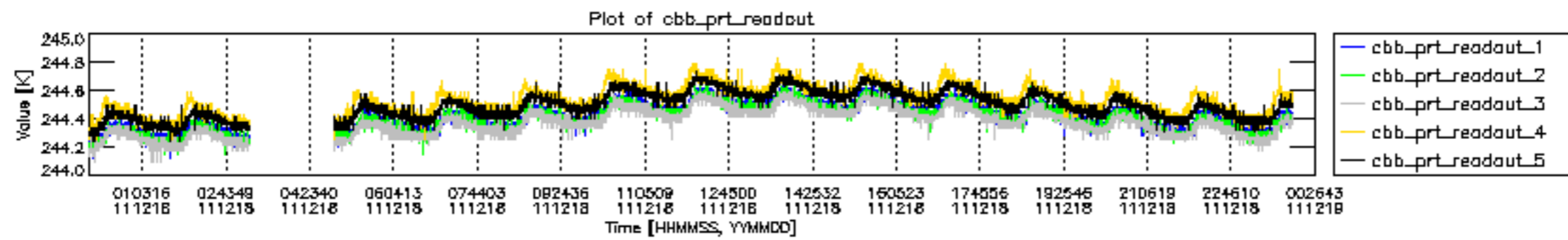


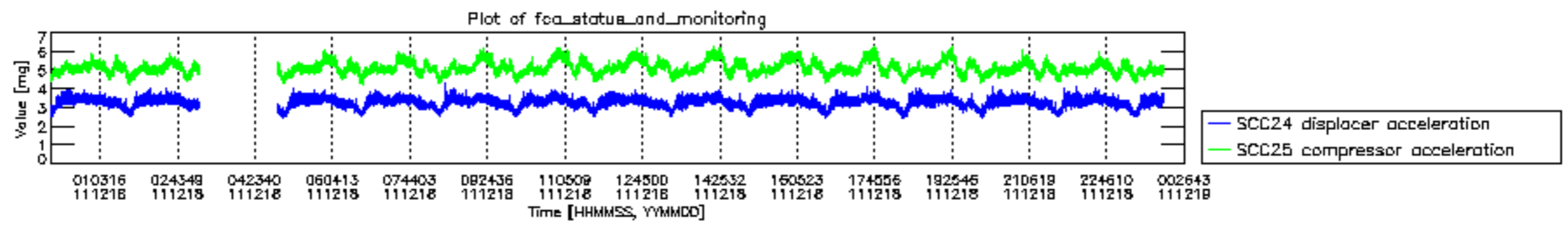












MIPNLOP_MIPSOUPAC_aux_fields_igm_cal, channel statistics plot
 Colour indicates value.

