

## 0. MIPAS Daily Report for level 0 products

### [0.1 General Info](#)

### [0.2 Instrument Operational Performance Parameters](#)

### [0.3 ADF monitoring](#)

## 0.1 General Info

This report contains a daily analysis on parameters extracted from MIPAS level 0 data (The MIP\_NL\_\_0P product).

### 0.1.1 Report summary

The table below shows general characteristics of the data that are included into this report.

Item	Value
Report version	v1.6 08-11-2010
Time of report generation	22DEC2011 05:25:03
Data source version	KSPT_L0/4504-N
Processing scope for products	17DEC2011 00:00:00 to 18DEC2011 00:00:00
Start time of first product within scope	17DEC2011 00:56:19
Stop time of last product within scope	18DEC2011 00:19:34
Total number of level 0 products	15
Number of level 0 products with errors	0

### 0.1.2 Product Quality Indicators per product

The following table shows a summary for each product used in this report.

#	Product name	Start time	Stop time	Prod err	ISP err sign	ISP miss sign	ISP disc sign	rs sign
0	MIP_NL__0PNPDE20111217_005619_000054863109_00361_51237_0426.N1	17DEC2011 00:56:19	17DEC2011 02:27:45	0	0	0	0	0
1	MIP_NL__0PNPDE20111217_022650_000047483109_00362_51238_0427.N1	17DEC2011 02:26:50	17DEC2011 03:45:59	0	0	0	0	0
2	MIP_NL__0PNPDE20111217_034525_000063233109_00363_51239_0428.N1	17DEC2011 03:45:25	17DEC2011 05:30:49	0	0	0	0	0
3	MIP_NL__0PNPDE20111217_053015_000059693109_00364_51240_0429.N1	17DEC2011 05:30:15	17DEC2011 07:09:45	0	0	0	0	0
4	MIP_NL__0PNPDK20111217_070901_000040993109_00365_51241_7815.N1	17DEC2011 07:09:01	17DEC2011 08:17:20	0	0	0	0	0
5	MIP_NL__0PNPDK20111217_081621_000060413109_00366_51242_7816.N1	17DEC2011 08:16:21	17DEC2011 09:57:03	0	0	0	0	0
6	MIP_NL__0PNPDK20111217_095527_000060253109_00367_51243_7817.N1	17DEC2011 09:55:27	17DEC2011 11:35:51	0	0	0	0	0
7	MIP_NL__0PNPDK20111217_113411_000060963109_00368_51244_7818.N1	17DEC2011 11:34:11	17DEC2011 13:15:47	0	0	0	0	0
8	MIP_NL__0PNPDK20111217_131407_000060463109_00369_51245_7819.N1	17DEC2011 13:14:07	17DEC2011 14:54:52	0	0	0	0	0
9	MIP_NL__0PNPDK20111217_145343_000057643109_00370_51246_7820.N1	17DEC2011 14:53:43	17DEC2011 16:29:47	0	0	0	0	0
10	MIP_NL__0PNPDK20111217_162846_000060413109_00371_51247_7821.N1	17DEC2011 16:28:46	17DEC2011 18:09:28	0	0	0	0	0
11	MIP_NL__0PNPDK20111217_180825_000059023109_00372_51248_7822.N1	17DEC2011 18:08:25	17DEC2011 19:46:47	0	0	0	0	0
12	MIP_NL__0PNPDE20111217_194446_000041823109_00373_51249_0430.N1	17DEC2011 19:44:46	17DEC2011 20:54:28	0	0	0	0	0
13	MIP_NL__0PNPDE20111217_205308_000063823109_00373_51249_0431.N1	17DEC2011 20:53:08	17DEC2011 22:39:30	0	0	0	0	0
14	MIP_NL__0PNPDE20111217_223832_000060623109_00374_51250_0432.N1	17DEC2011 22:38:32	18DEC2011 00:19:34	0	0	0	0	0

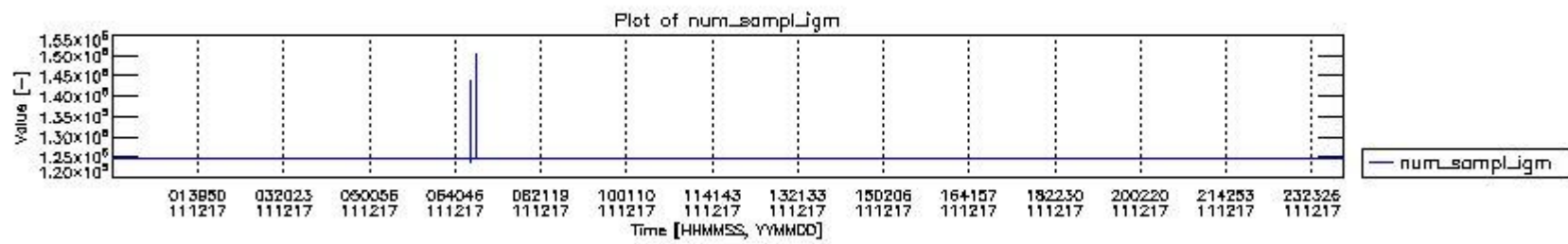
## 0.2 Instrument Operational Performance Parameters

The following plots give an overview of various instrument parameters for this day. The instrument parameters are part of the auxiliary data field within the source packets of the MIP\_NL\_\_0P product. The auxiliary data is normally included twice per interferogram. Note that only the first packet is currently included in monitoring.

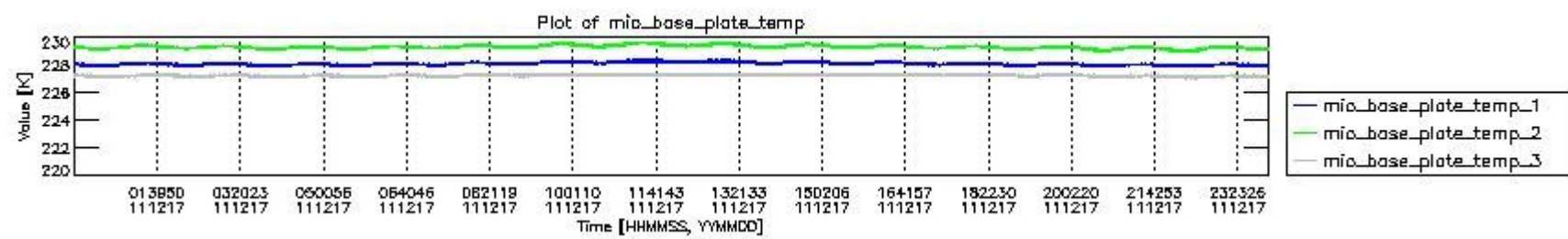
The following table shows the counts of various interferogram number of samples

Number of igm samples	Count [#]	Count [%]
123516	1	0.0024001536
124800	38696	92.876344
124803	2962	7.1092550

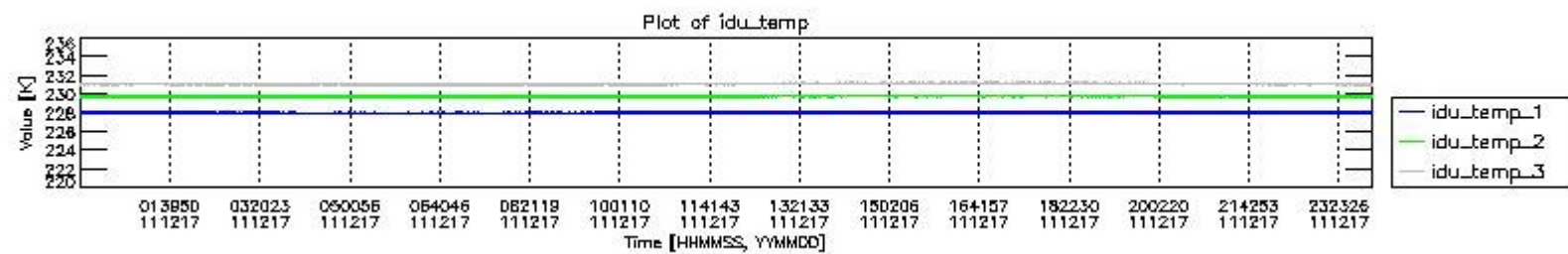
127456	1	0.0024001536
142364	1	0.0024001536
143648	1	0.0024001536
147588	1	0.0024001536
150244	1	0.0024001536



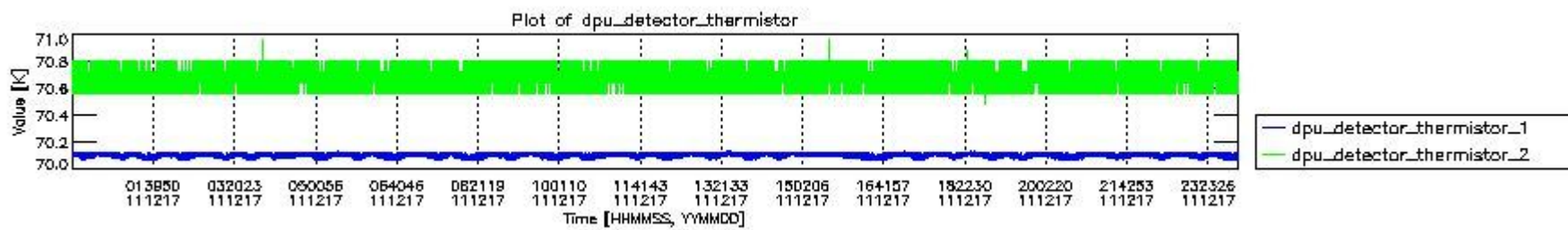
mipas\_daily\_report\_level0\_KSPT\_L0\_4504\_N\_20111217\_0.PNG



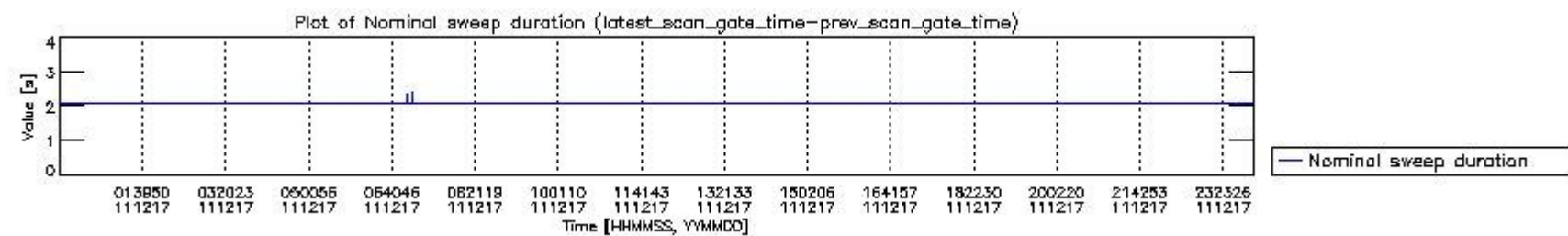
mipas\_daily\_report\_level0\_KSPT\_L0\_4504\_N\_20111217\_1.PNG



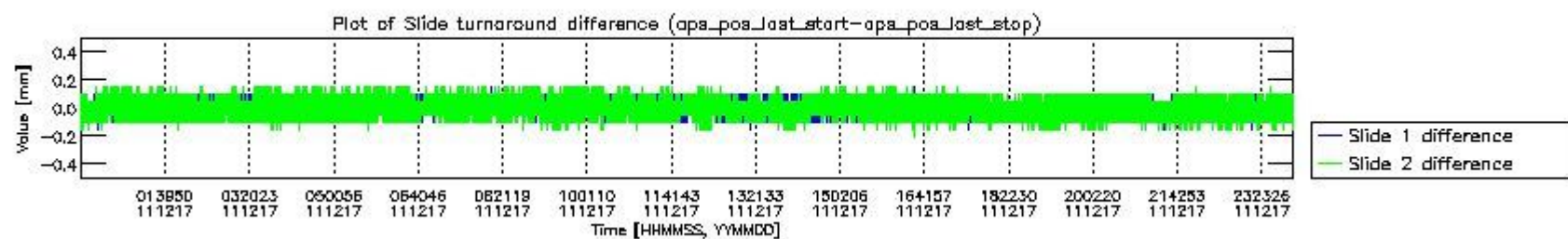
mipas\_daily\_report\_level0\_KSPT\_L0\_4504\_N\_20111217\_2.PNG



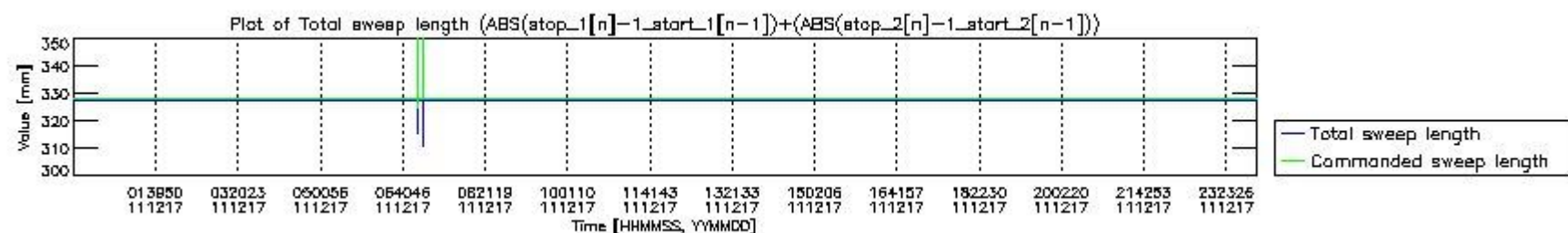
mipas\_daily\_report\_level0\_KSPT\_L0\_4504\_N\_20111217\_3.PNG



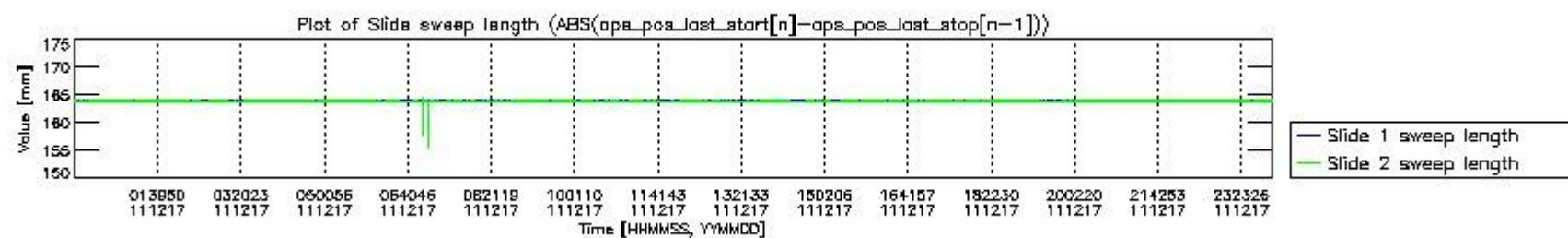
mipas\_daily\_report\_level0\_KSPT\_L0\_4504\_N\_20111217\_4.PNG



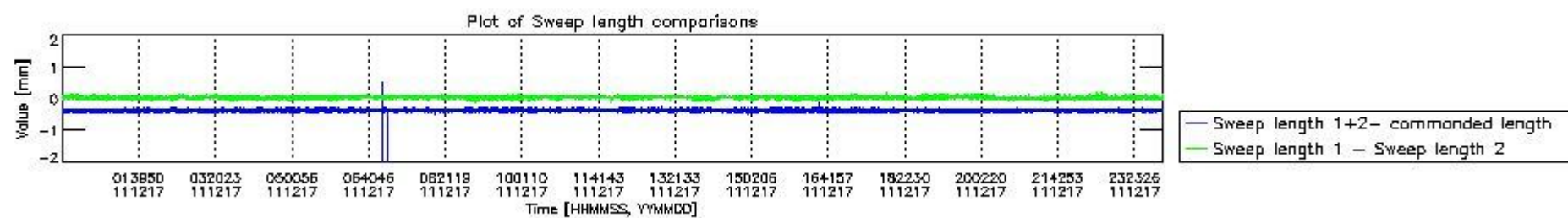
mipas\_daily\_report\_level0\_KSPT\_L0\_4504\_N\_20111217\_5.PNG



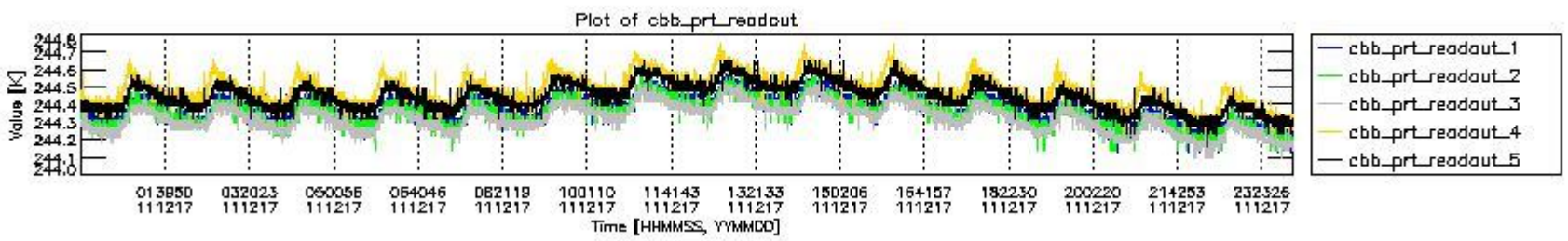
mipas\_daily\_report\_level0\_KSPT\_L0\_4504\_N\_20111217\_6.PNG



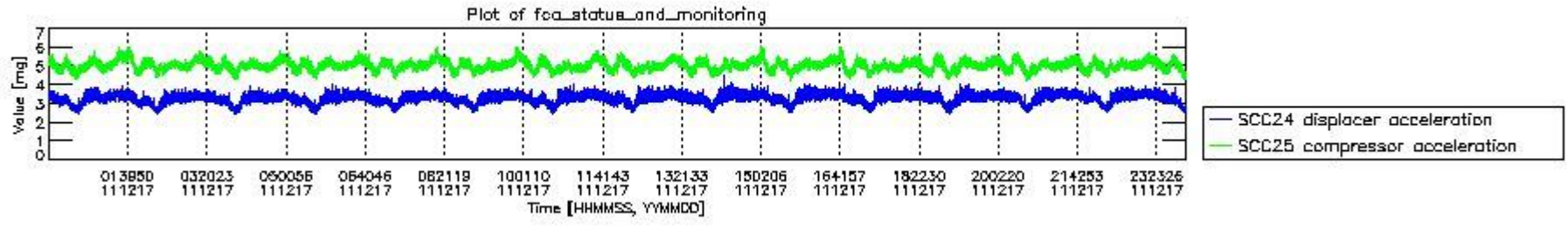
mipas\_daily\_report\_level0\_KSPT\_L0\_4504\_N\_20111217\_7.PNG



mipas\_daily\_report\_level0\_KSPT\_L0\_4504\_N\_20111217\_8.PNG



mipas\_daily\_report\_level0\_KSPT\_L0\_4504\_N\_20111217\_9.PNG

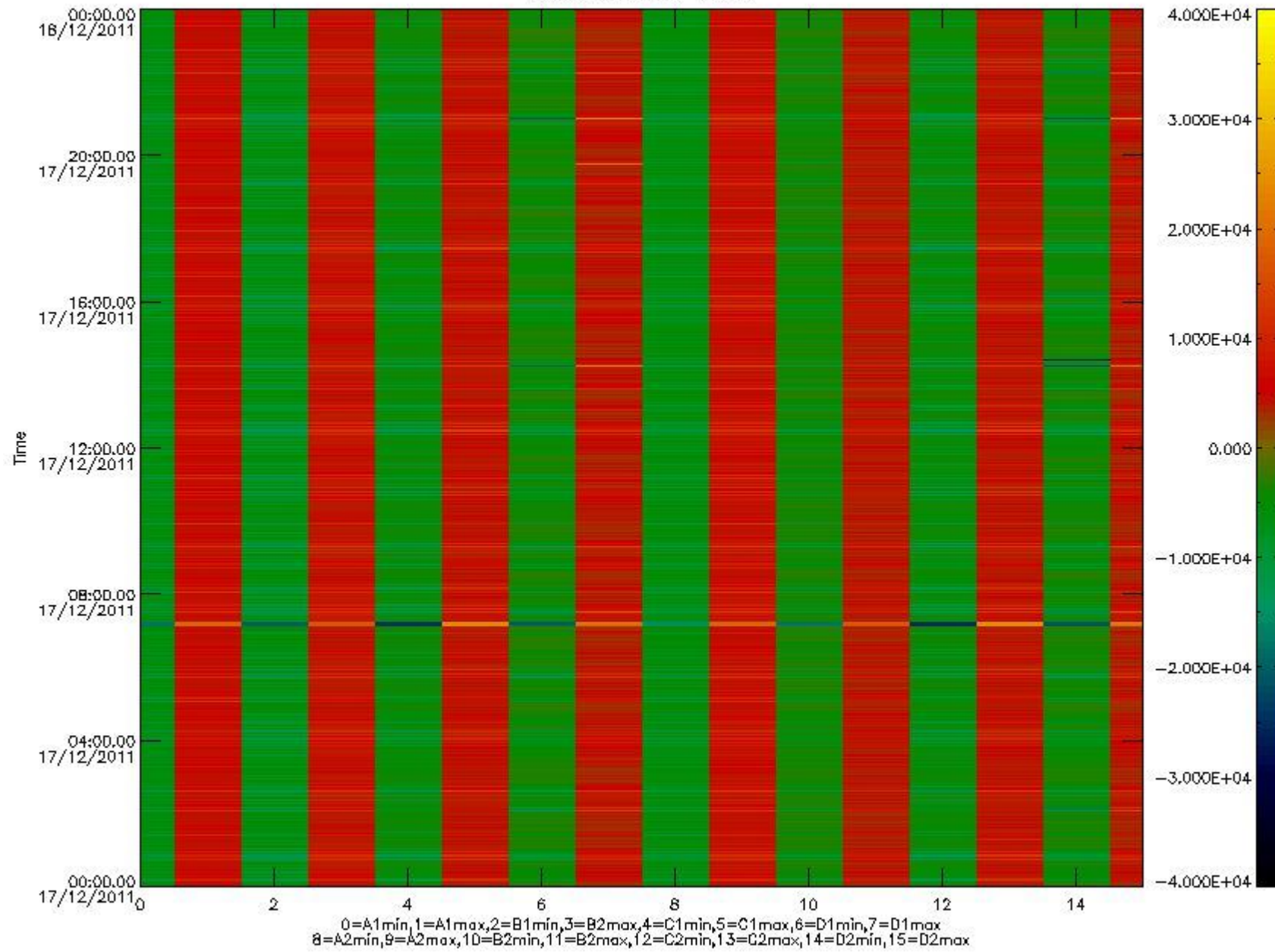


mipas\_daily\_report\_level0\_KSPT\_L0\_4504\_N\_20111217\_10.PNG

The following table shows channel statistics for all channels for this day.

Channel	Min	Max	ADC
A1	-18072	19150	16bit
B1	-20312	17493	16bit
C1	-24629	24419	16bit
D1	-32768	32767	16bit
A2	-15693	19340	16bit
B2	-18171	17837	16bit
C2	-25654	25163	16bit
D2	-32768	32767	16bit

MIPNLOP\_MIPSOUPAC\_aux\_fields\_igm\_cal, channel statistics plot  
Colour indicates value.



mipas\_daily\_report\_level0\_KSPT\_L0\_4504\_N\_20111217\_11.PNG

### 0.3 ADF monitoring

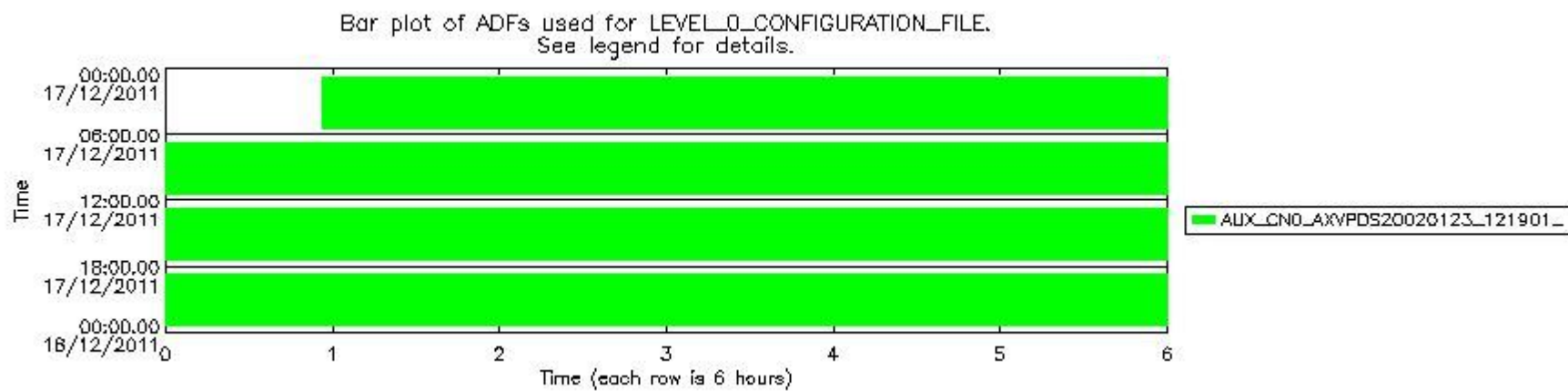
The use of ADFs is shown in two ways:

1. By means of two tables that can be used to find the ADF used for a specific product.
2. By means of plots that show changes in ADF using colours.

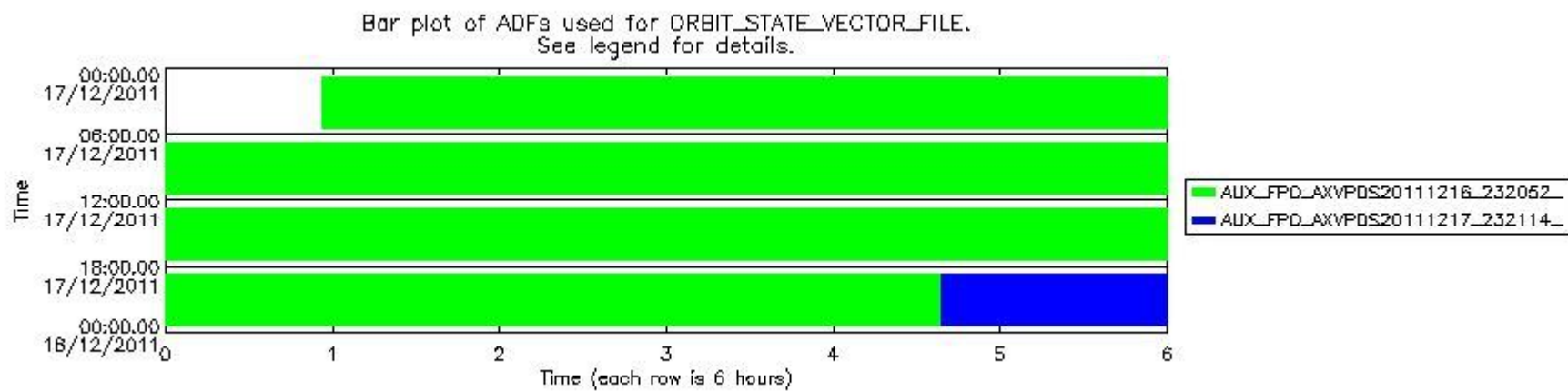
Number	ADF
0	AUX_CN0_AXVPDS20020123_121901_20020101_000000_20200101_000000
1	AUX_FPO_AXVPDS20111216_232052_20111216_182712_20111226_204052
2	AUX_FPO_AXVPDS20111217_232114_20111217_193041_20111227_200407

Number	Product name	#CN0	#FPO
--------	--------------	------	------

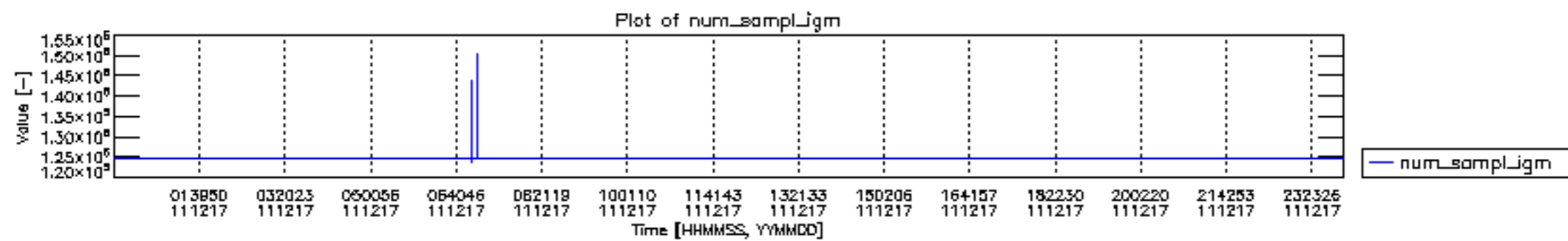
0	MIP_NL__0PNPDE20111217_005619_000054863109_00361_51237_0426.N1	0	1
1	MIP_NL__0PNPDE20111217_022650_000047483109_00362_51238_0427.N1	0	1
2	MIP_NL__0PNPDE20111217_034525_000063233109_00363_51239_0428.N1	0	1
3	MIP_NL__0PNPDE20111217_053015_000059693109_00364_51240_0429.N1	0	1
4	MIP_NL__0PNPDK20111217_070901_000040993109_00365_51241_7815.N1	0	1
5	MIP_NL__0PNPDK20111217_081621_000060413109_00366_51242_7816.N1	0	1
6	MIP_NL__0PNPDK20111217_095527_000060253109_00367_51243_7817.N1	0	1
7	MIP_NL__0PNPDK20111217_113411_000060963109_00368_51244_7818.N1	0	1
8	MIP_NL__0PNPDK20111217_131407_000060463109_00369_51245_7819.N1	0	1
9	MIP_NL__0PNPDK20111217_145343_000057643109_00370_51246_7820.N1	0	1
10	MIP_NL__0PNPDK20111217_162846_000060413109_00371_51247_7821.N1	0	1
11	MIP_NL__0PNPDK20111217_180825_000059023109_00372_51248_7822.N1	0	1
12	MIP_NL__0PNPDE20111217_194446_000041823109_00373_51249_0430.N1	0	1
13	MIP_NL__0PNPDE20111217_205308_000063823109_00373_51249_0431.N1	0	1
14	MIP_NL__0PNPDE20111217_223832_000060623109_00374_51250_0432.N1	0	2

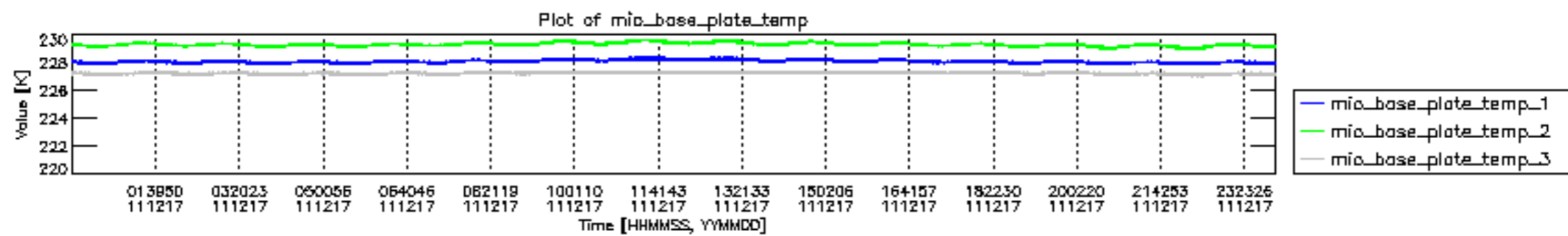


mipas\_daily\_report\_level0\_KSPT\_L0\_4504\_N\_20111217\_12.PNG

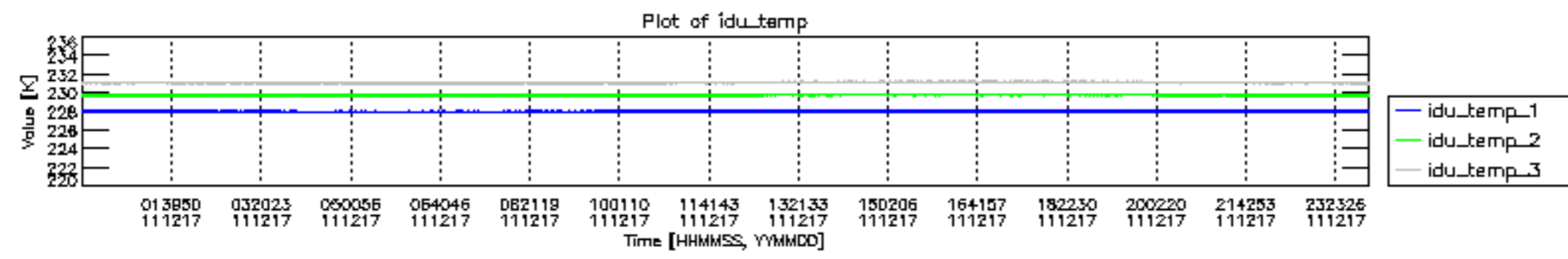


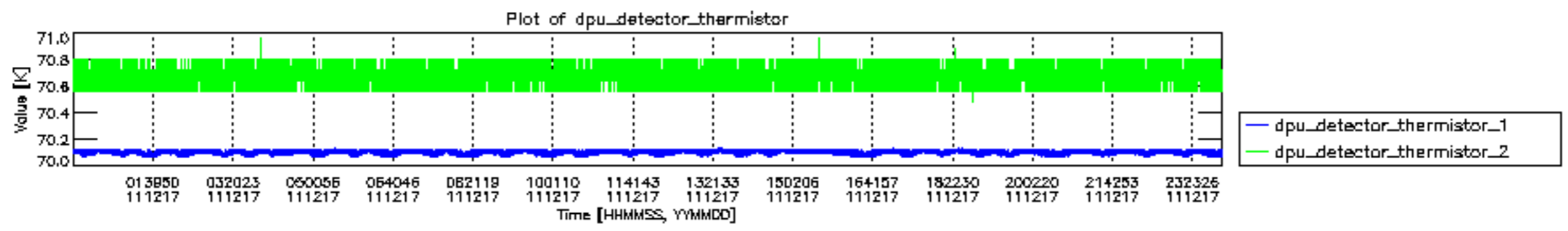
mipas\_daily\_report\_level0\_KSPT\_L0\_4504\_N\_20111217\_13.PNG

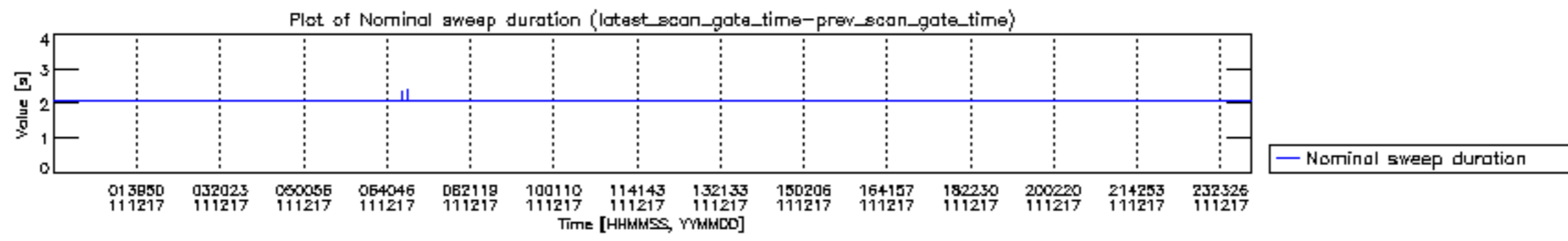


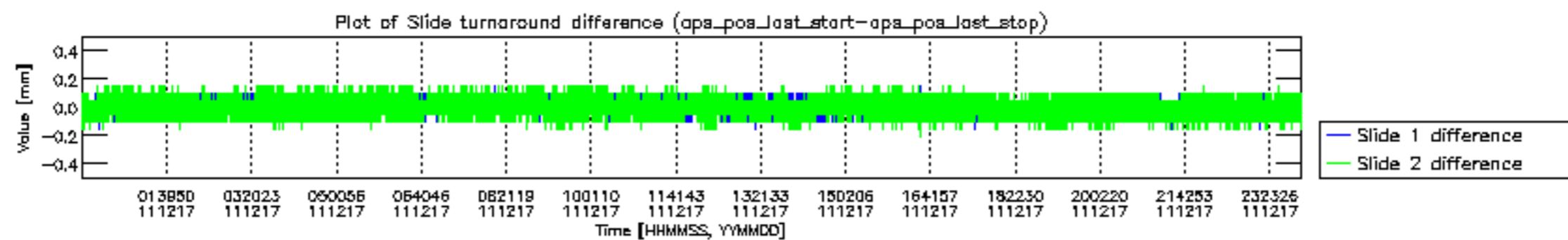


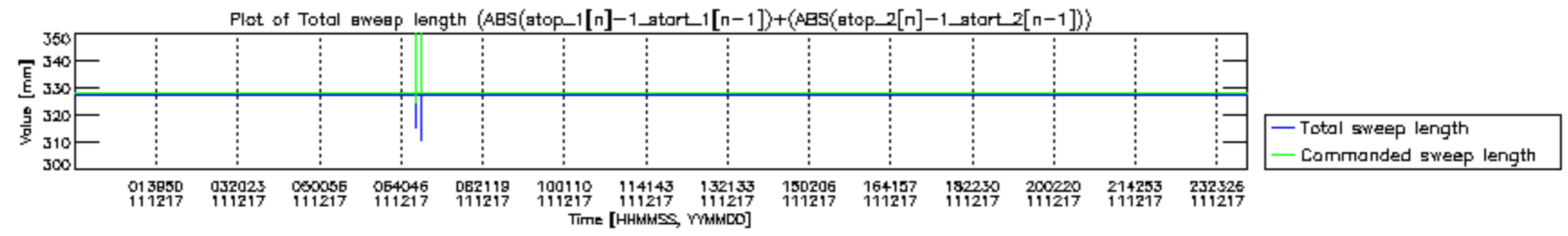


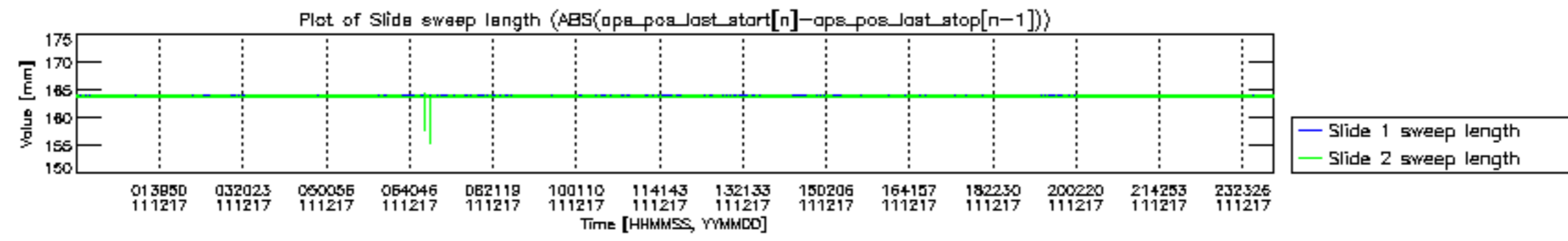


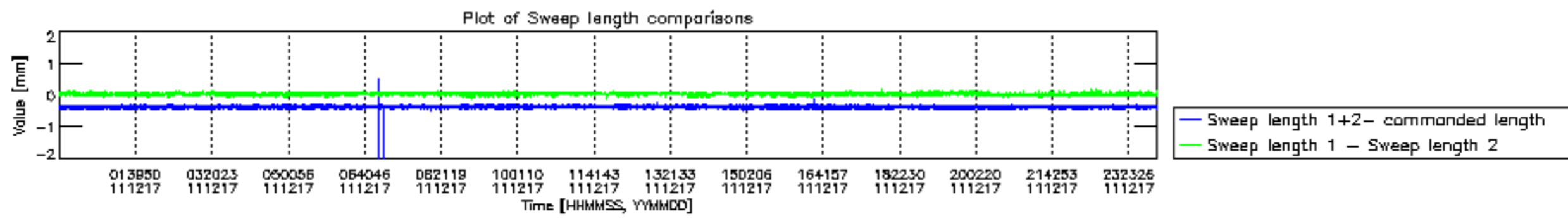


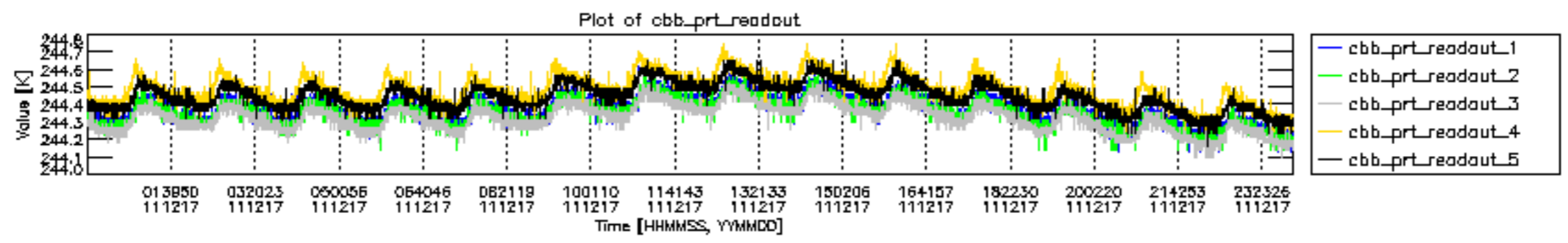




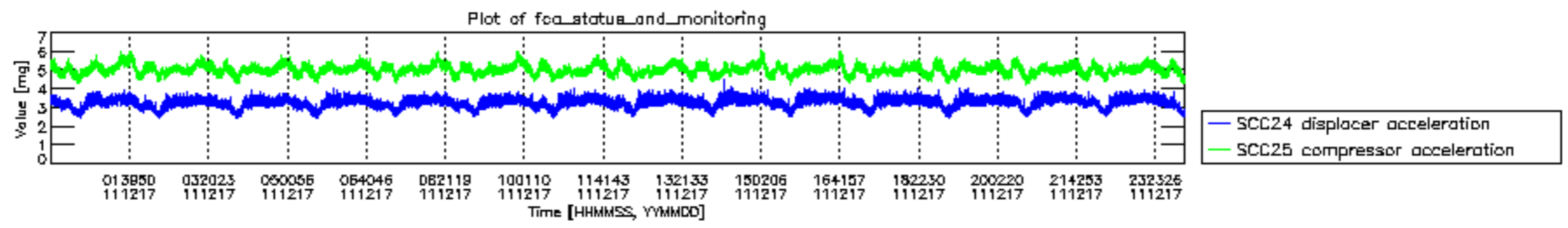












MIPNLOP\_MIPSOUPAC\_aux\_fields\_igm\_cal, channel statistics plot  
 Colour indicates value.

