

## 0. MIPAS Daily Report for level 0 products

### [0.1 General Info](#)

### [0.2 Instrument Operational Performance Parameters](#)

### [0.3 ADF monitoring](#)

## 0.1 General Info

This report contains a daily analysis on parameters extracted from MIPAS level 0 data (The MIP\_NL\_\_0P product).

### 0.1.1 Report summary

The table below shows general characteristics of the data that are included into this report.

Item	Value
Report version	v1.6 08-11-2010
Time of report generation	19DEC2011 05:23:45
Data source version	KSPT_L0/4504-N
Processing scope for products	14DEC2011 00:00:00 to 15DEC2011 00:00:00
Start time of first product within scope	14DEC2011 01:05:54
Stop time of last product within scope	15DEC2011 00:29:53
Total number of level 0 products	14
Number of level 0 products with errors	0

### 0.1.2 Product Quality Indicators per product

The following table shows a summary for each product used in this report.

#	Product name	Start time	Stop time	Prod err	ISP err sign	ISP miss sign	ISP disc sign	rs sign
0	MIP_NL__0PNPDE20111214_010554_000102593109_00318_51194_0407.N1	14DEC2011 01:05:54	14DEC2011 03:56:54	0	0	0	0	0
1	MIP_NL__0PNPDE20111214_035620_000062253109_00320_51196_0408.N1	14DEC2011 03:56:20	14DEC2011 05:40:06	0	0	0	0	0
2	MIP_NL__0PNPDE20111214_053934_000060813109_00321_51197_0409.N1	14DEC2011 05:39:34	14DEC2011 07:20:55	0	0	0	0	0
3	MIP_NL__0PNPDK20111214_072022_000040403109_00322_51198_7789.N1	14DEC2011 07:20:22	14DEC2011 08:27:42	0	0	0	0	0
4	MIP_NL__0PNPDK20111214_082644_000060573109_00323_51199_7790.N1	14DEC2011 08:26:44	14DEC2011 10:07:40	0	0	0	0	0
5	MIP_NL__0PNPDK20111214_100600_000060793109_00324_51200_7791.N1	14DEC2011 10:06:00	14DEC2011 11:47:19	0	0	0	0	0
6	MIP_NL__0PNPDK20111214_114537_000060813109_00325_51201_7792.N1	14DEC2011 11:45:37	14DEC2011 13:26:58	0	0	0	0	0
7	MIP_NL__0PNPDK20111214_132553_000058853109_00326_51202_7793.N1	14DEC2011 13:25:53	14DEC2011 15:03:58	0	0	0	0	0
8	MIP_NL__0PNPDK20111214_150314_000058583109_00327_51203_7794.N1	14DEC2011 15:03:14	14DEC2011 16:40:52	0	0	0	0	0
9	MIP_NL__0PNPDK20111214_163935_000060163109_00328_51204_7795.N1	14DEC2011 16:39:35	14DEC2011 18:19:51	0	0	0	0	0
10	MIP_NL__0PNPDK20111214_181850_000057763109_00329_51205_7796.N1	14DEC2011 18:18:50	14DEC2011 19:55:07	0	0	0	0	0
11	MIP_NL__0PNPDE20111214_195406_000042263109_00330_51206_0410.N1	14DEC2011 19:54:06	14DEC2011 21:04:32	0	0	0	0	0
12	MIP_NL__0PNPDE20111214_210313_000063993109_00330_51206_0411.N1	14DEC2011 21:03:13	14DEC2011 22:49:51	0	0	0	0	0
13	MIP_NL__0PNPDE20111214_224851_000060623109_00331_51207_0412.N1	14DEC2011 22:48:51	15DEC2011 00:29:53	0	0	0	0	0

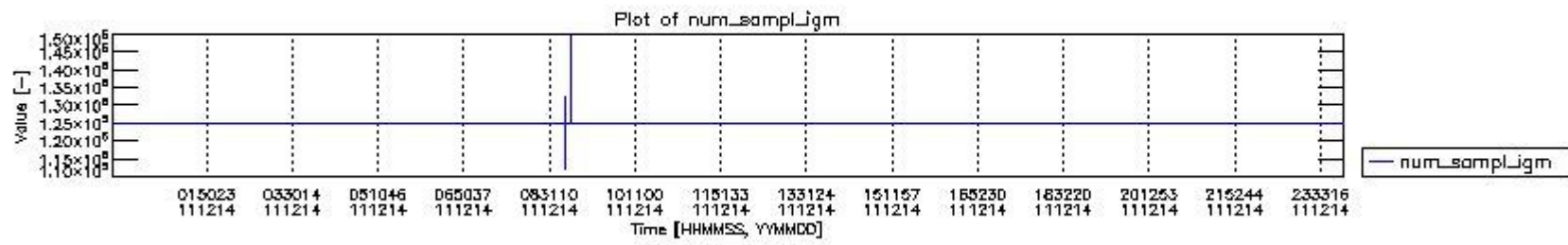
## 0.2 Instrument Operational Performance Parameters

The following plots give an overview of various instrument parameters for this day. The instrument parameters are part of the auxiliary data field within the source packets of the MIP\_NL\_\_0P product. The auxiliary data is normally included twice per interferogram. Note that only the first packet is currently included in monitoring.

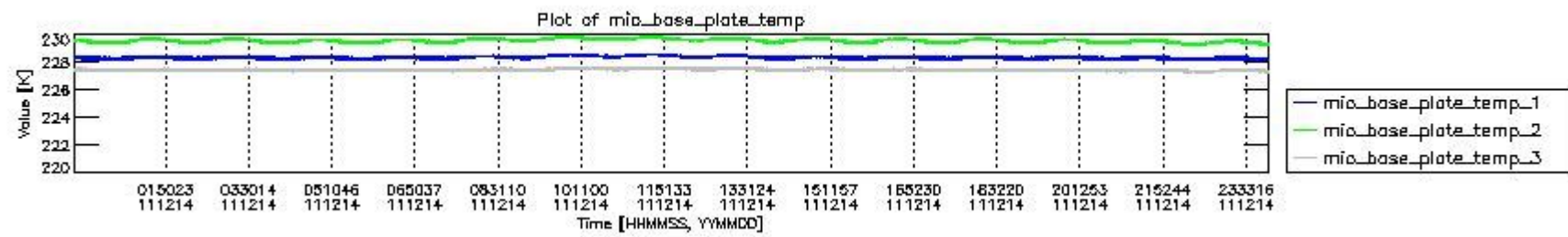
The following table shows the counts of various interferogram number of samples

Number of igm samples	Count [#]	Count [%]
112142	1	0.0023992898
119616	1	0.0023992898
124800	38713	92.883706
124803	2960	7.1018978

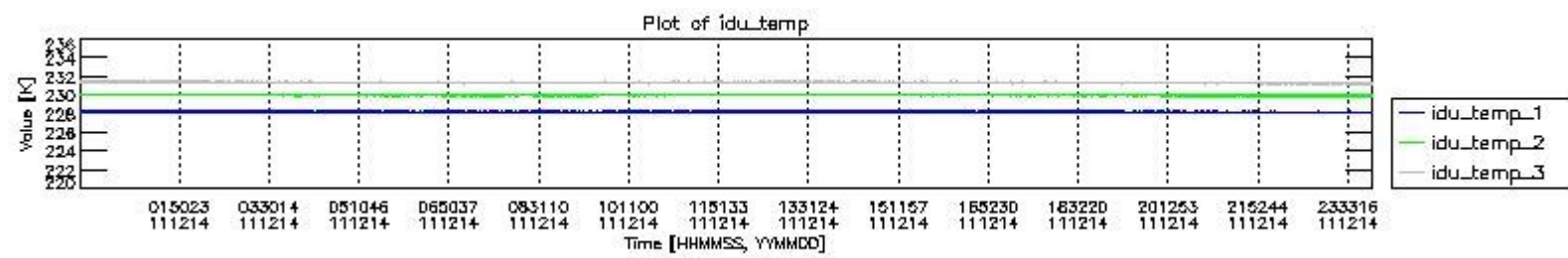
127308	1	0.0023992898
132274	1	0.0023992898
147440	1	0.0023992898
149948	1	0.0023992898



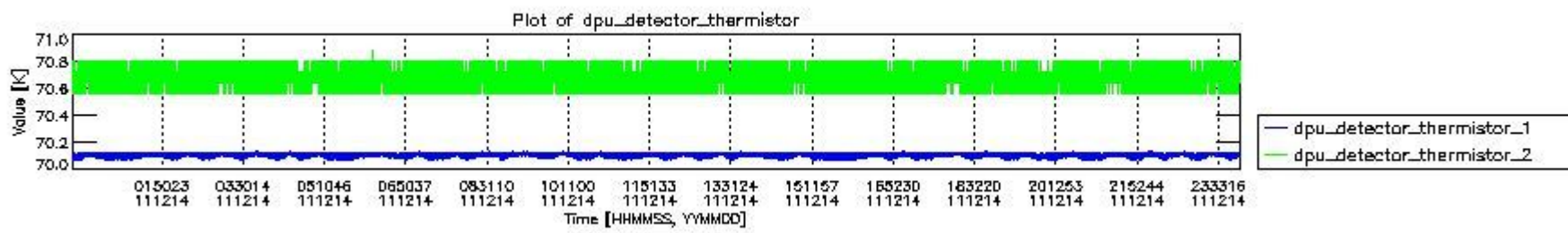
mipas\_daily\_report\_level0\_KSPT\_L0\_4504\_N\_20111214\_0.PNG



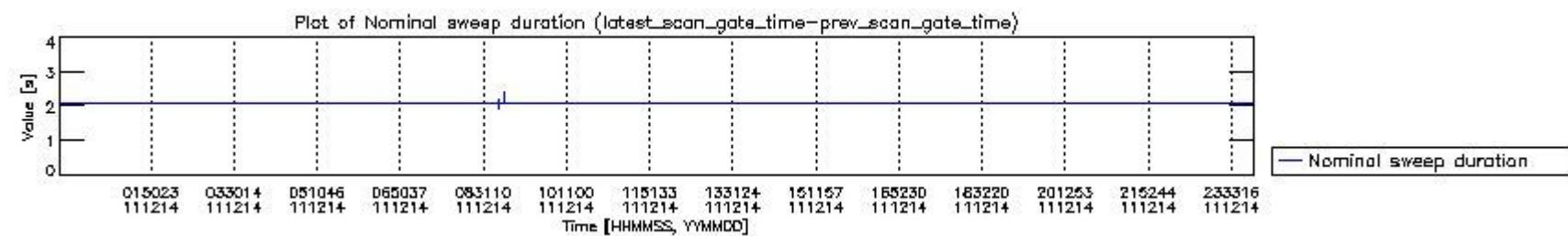
mipas\_daily\_report\_level0\_KSPT\_L0\_4504\_N\_20111214\_1.PNG



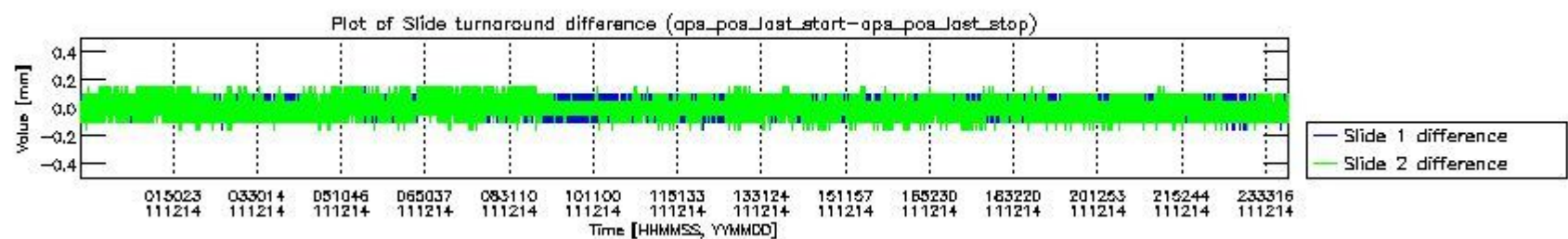
mipas\_daily\_report\_level0\_KSPT\_L0\_4504\_N\_20111214\_2.PNG



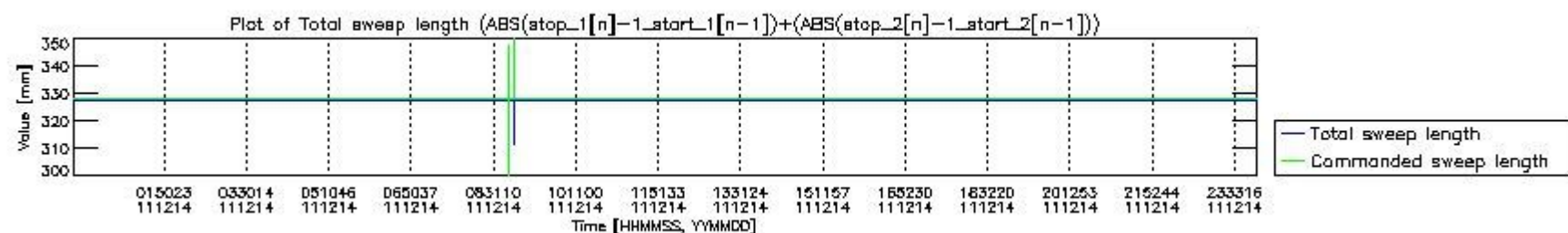
mipas\_daily\_report\_level0\_KSPT\_L0\_4504\_N\_20111214\_3.PNG



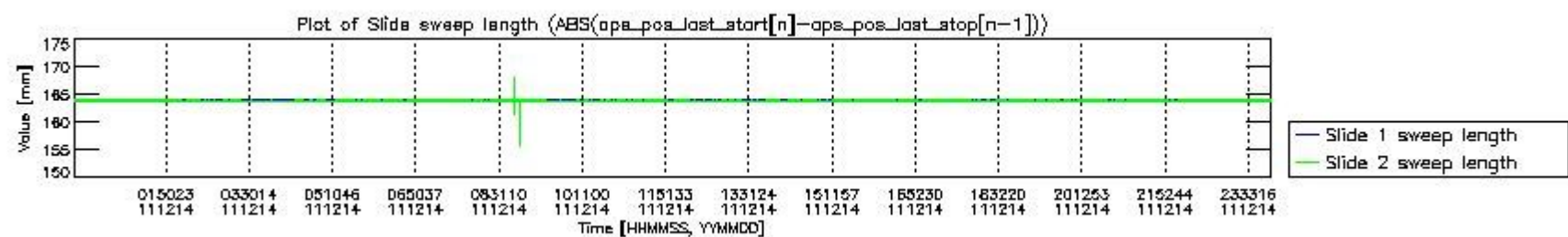
mipas\_daily\_report\_level0\_KSPT\_L0\_4504\_N\_20111214\_4.PNG



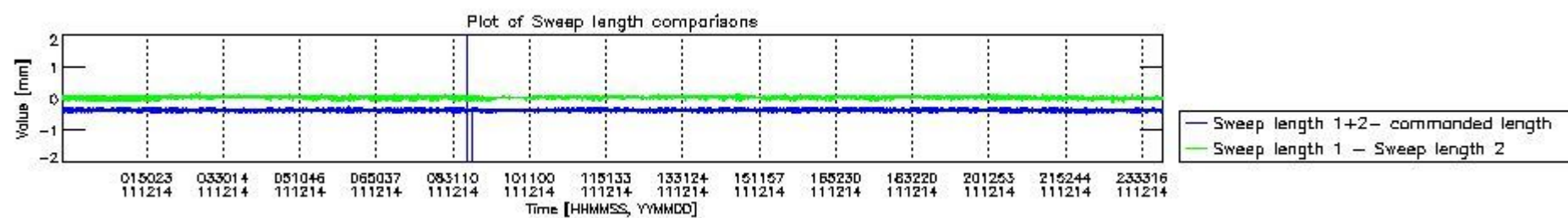
mipas\_daily\_report\_level0\_KSPT\_L0\_4504\_N\_20111214\_5.PNG



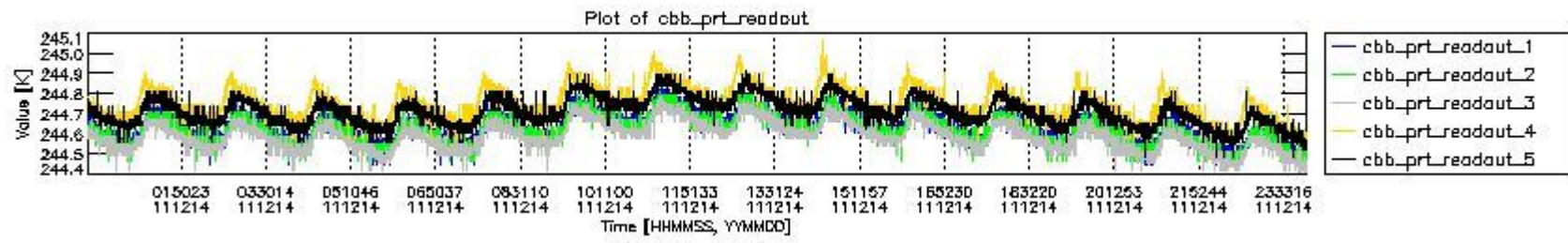
mipas\_daily\_report\_level0\_KSPT\_L0\_4504\_N\_20111214\_6.PNG



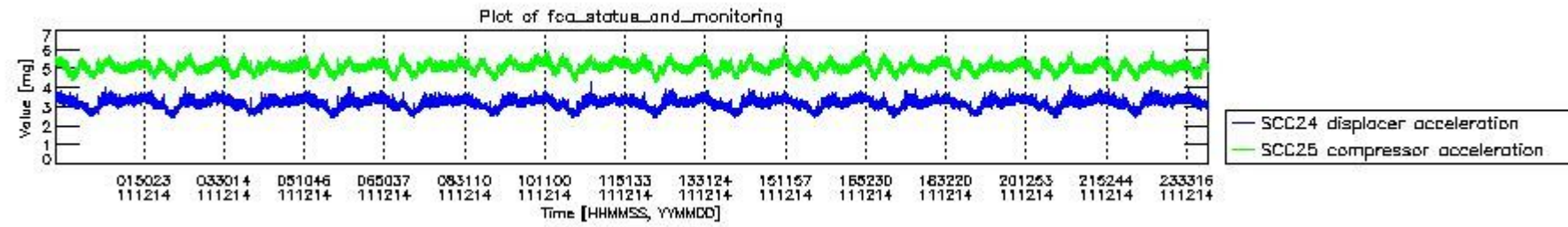
mipas\_daily\_report\_level0\_KSPT\_L0\_4504\_N\_20111214\_7.PNG



mipas\_daily\_report\_level0\_KSPT\_L0\_4504\_N\_20111214\_8.PNG



mipas\_daily\_report\_level0\_KSPT\_L0\_4504\_N\_20111214\_9.PNG

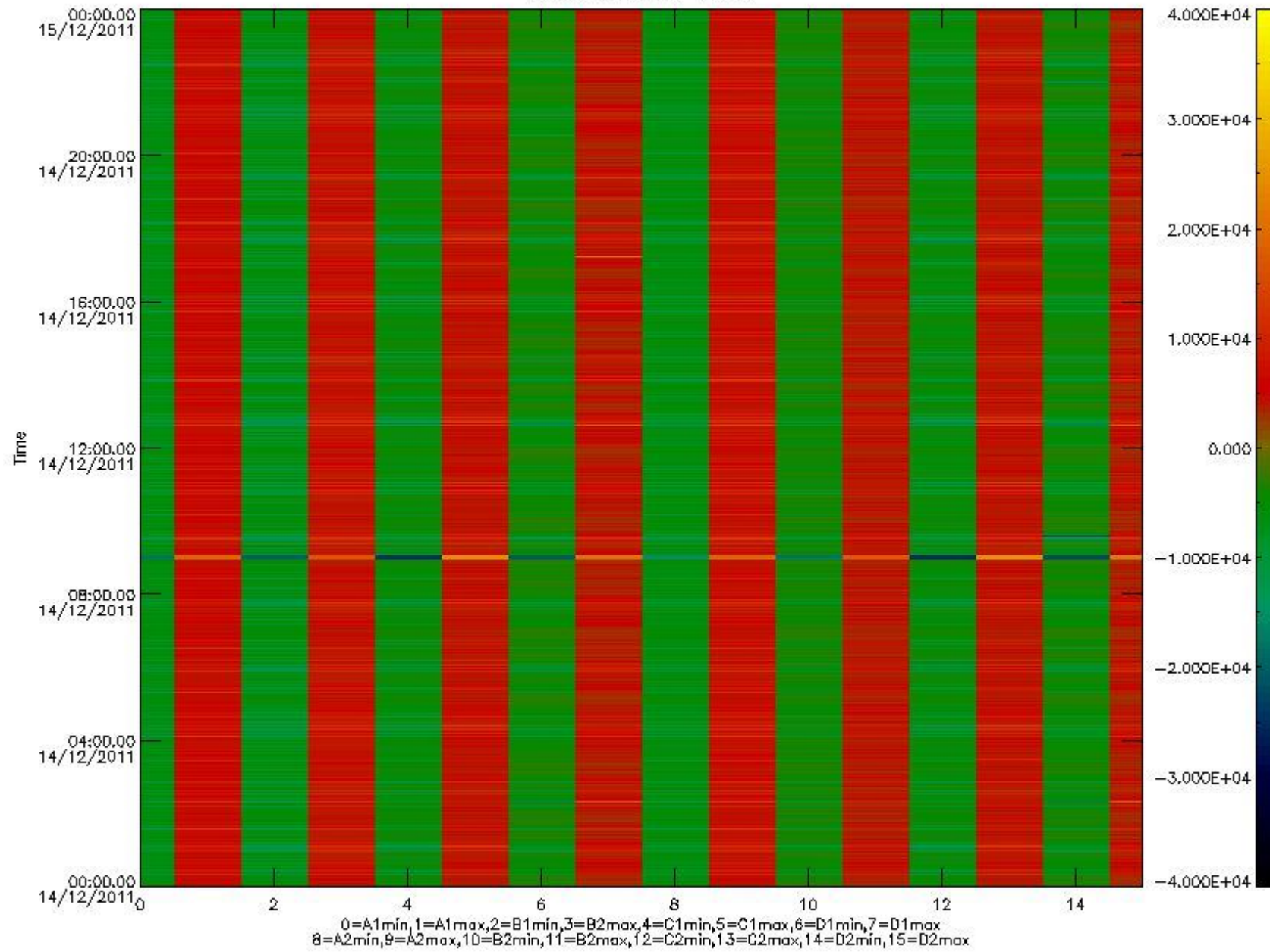


mipas\_daily\_report\_level0\_KSPT\_L0\_4504\_N\_20111214\_10.PNG

The following table shows channel statistics for all channels for this day.

Channel	Min	Max	ADC
A1	-18158	19213	16bit
B1	-20505	17612	16bit
C1	-24873	24814	16bit
D1	-30676	32767	16bit
A2	-15773	19438	16bit
B2	-18355	18016	16bit
C2	-25900	25546	16bit
D2	-32768	32767	16bit

MIPNLOP\_MIPSOUPAC\_aux\_fields\_igm\_cal, channel statistics plot  
Colour indicates value.



mipas\_daily\_report\_level0\_KSPT\_L0\_4504\_N\_20111214\_11.PNG

### 0.3 ADF monitoring

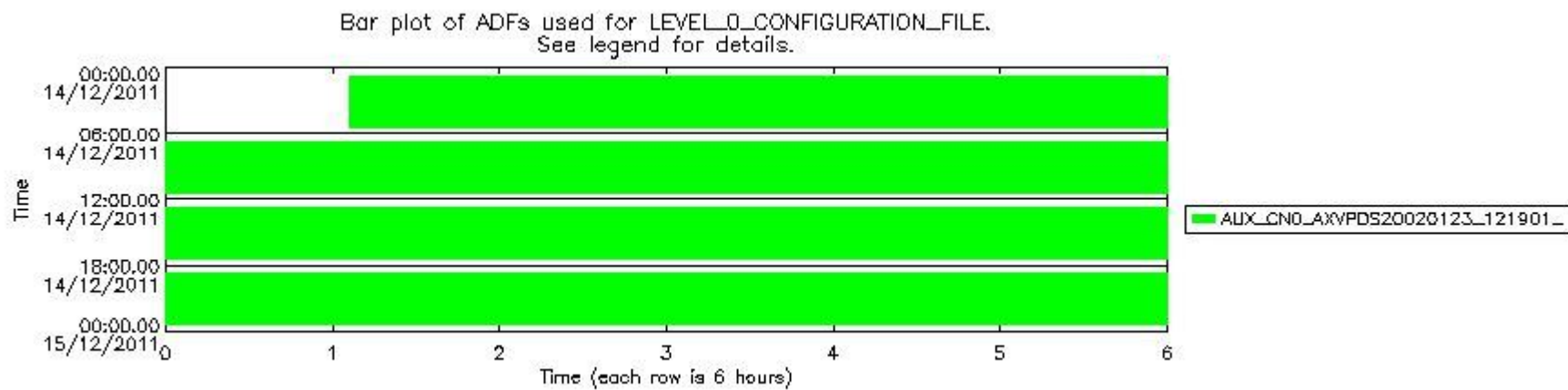
The use of ADFs is shown in two ways:

1. By means of two tables that can be used to find the ADF used for a specific product.
2. By means of plots that show changes in ADF using colours.

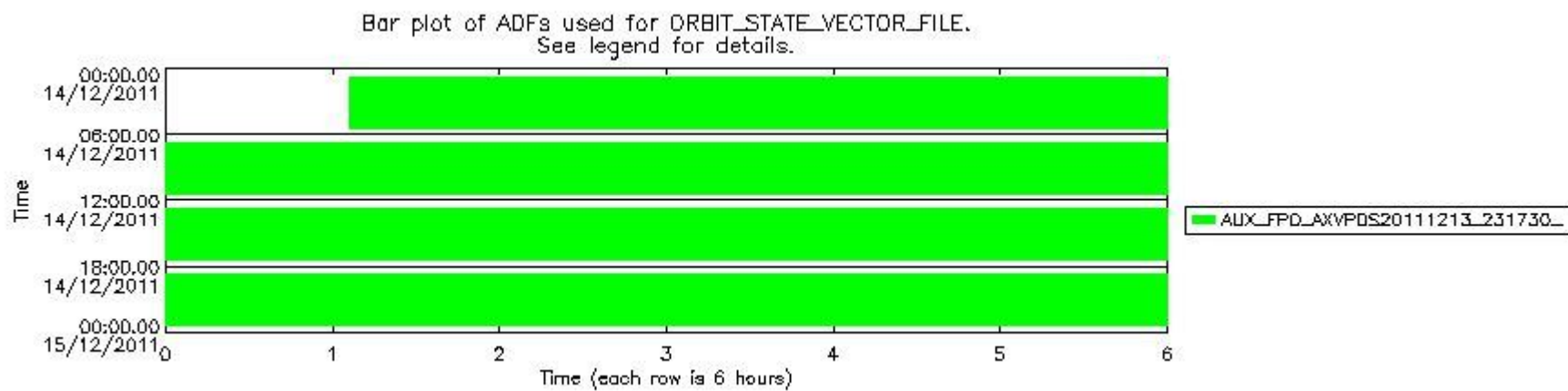
Number	ADF
0	AUX_CN0_AXVPDS20020123_121901_20020101_000000_20200101_000000
1	AUX_FPO_AXVPDS20111213_231730_20111213_183713_20111223_205053

Number	Product name	#CN0	#FPO
0	MIP_NL_0PNPDE20111214_010554_000102593109_00318_51194_0407.N1	0	1

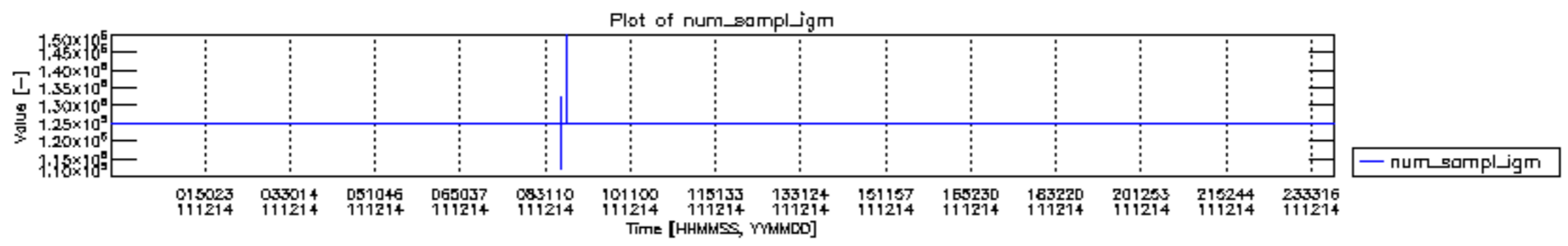
1	MIP_NL__0PNPDE20111214_035620_000062253109_00320_51196_0408.N1	0	1
2	MIP_NL__0PNPDE20111214_053934_000060813109_00321_51197_0409.N1	0	1
3	MIP_NL__0PNPDK20111214_072022_000040403109_00322_51198_7789.N1	0	1
4	MIP_NL__0PNPDK20111214_082644_000060573109_00323_51199_7790.N1	0	1
5	MIP_NL__0PNPDK20111214_100600_000060793109_00324_51200_7791.N1	0	1
6	MIP_NL__0PNPDK20111214_114537_000060813109_00325_51201_7792.N1	0	1
7	MIP_NL__0PNPDK20111214_132553_000058853109_00326_51202_7793.N1	0	1
8	MIP_NL__0PNPDK20111214_150314_000058583109_00327_51203_7794.N1	0	1
9	MIP_NL__0PNPDK20111214_163935_000060163109_00328_51204_7795.N1	0	1
10	MIP_NL__0PNPDK20111214_181850_000057763109_00329_51205_7796.N1	0	1
11	MIP_NL__0PNPDE20111214_195406_000042263109_00330_51206_0410.N1	0	1
12	MIP_NL__0PNPDE20111214_210313_000063993109_00330_51206_0411.N1	0	1
13	MIP_NL__0PNPDE20111214_224851_000060623109_00331_51207_0412.N1	0	1

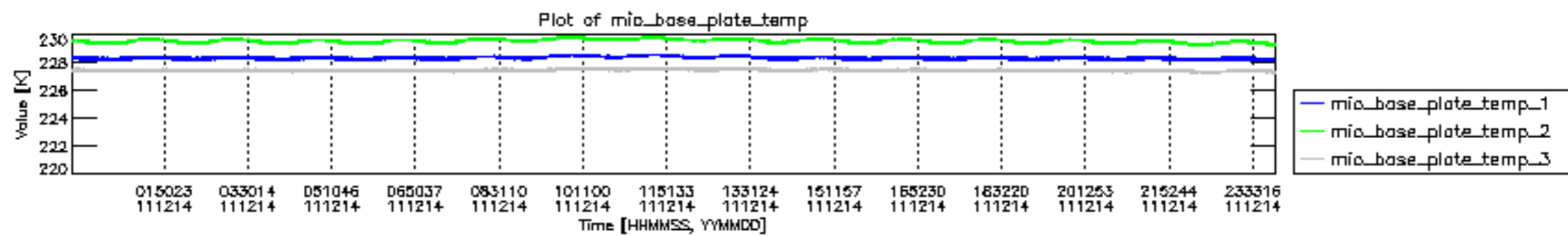


mipas\_daily\_report\_level0\_KSPT\_L0\_4504\_N\_20111214\_12.PNG

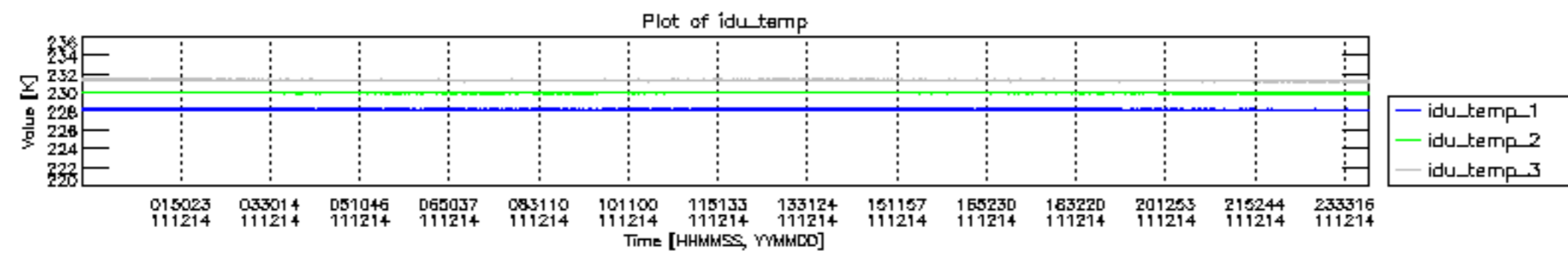


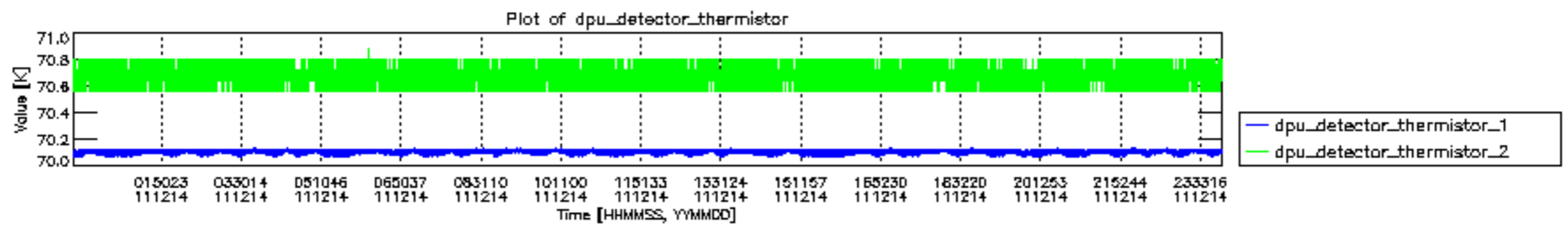
mipas\_daily\_report\_level0\_KSPT\_L0\_4504\_N\_20111214\_13.PNG

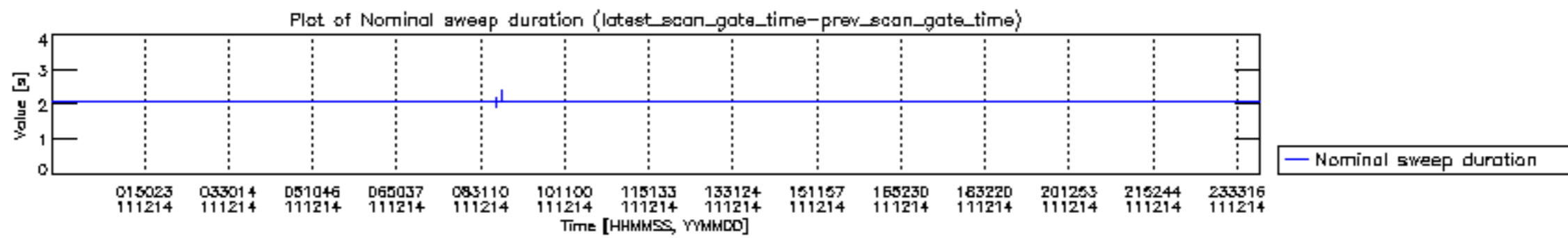


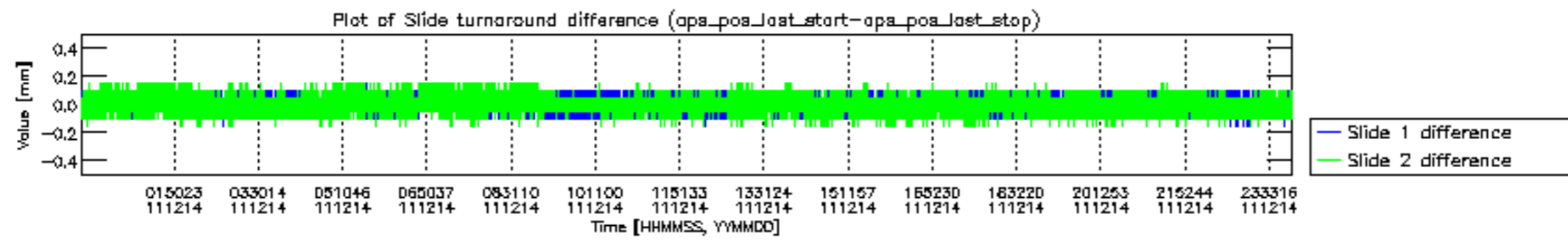


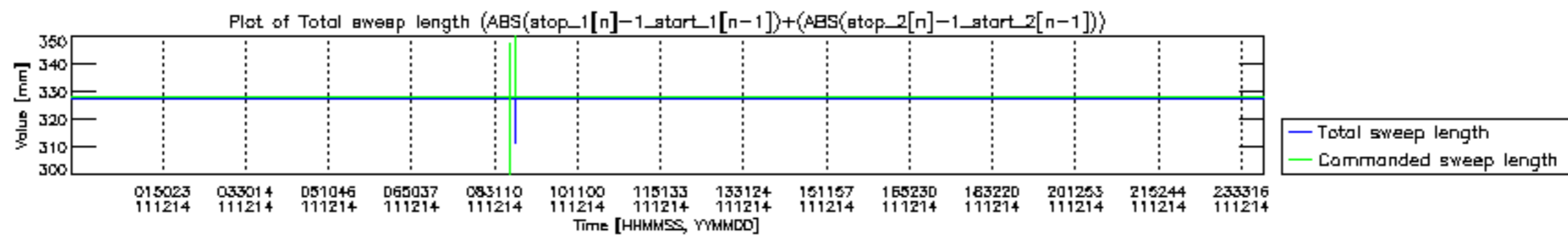


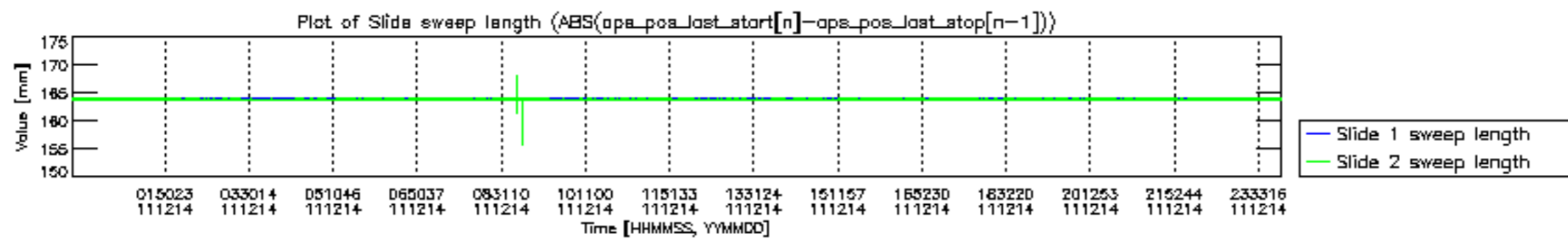


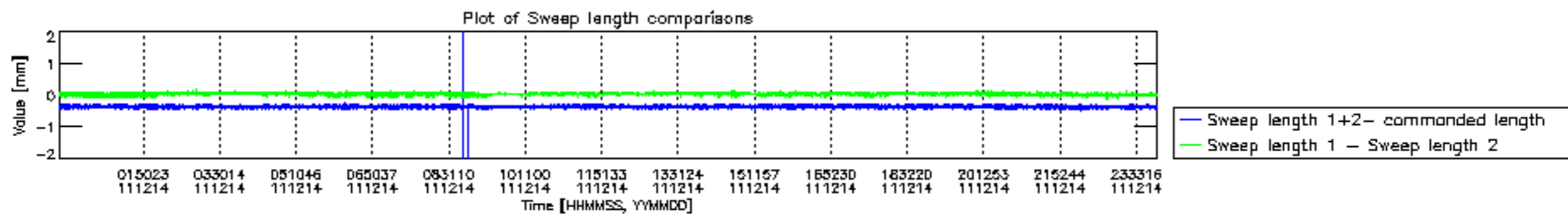


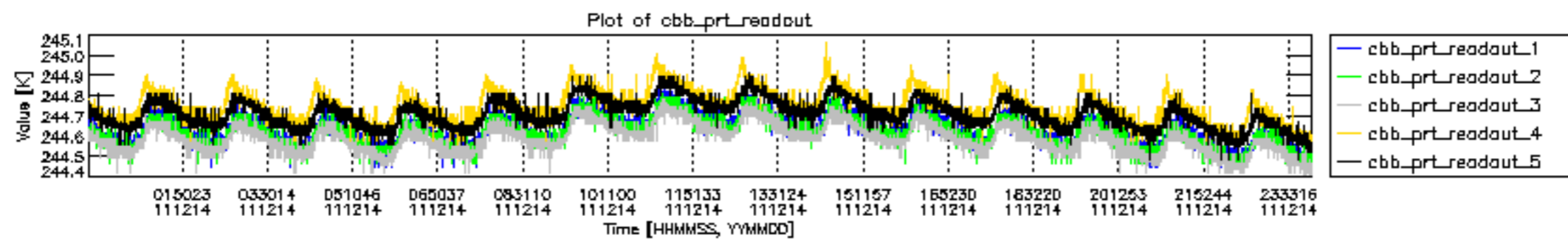




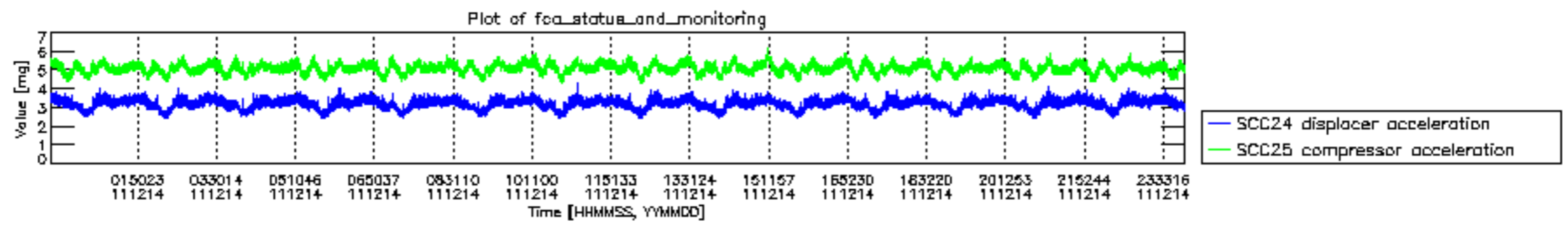












MIPNLOP\_MIPSOUPAC\_aux\_fields\_igm\_cal, channel statistics plot  
 Colour indicates value.

