

0. MIPAS Daily Report for level 0 products

[0.1 General Info](#)

[0.2 Instrument Operational Performance Parameters](#)

[0.3 ADF monitoring](#)

0.1 General Info

This report contains a daily analysis on parameters extracted from MIPAS level 0 data (The MIP_NL__0P product).

0.1.1 Report summary

The table below shows general characteristics of the data that are included into this report.

Item	Value
Report version	v1.6 08-11-2010
Time of report generation	15DEC2011 05:24:02
Data source version	KSPT_L0/4504-N
Processing scope for products	10DEC2011 00:00:00 to 11DEC2011 00:00:00
Start time of first product within scope	10DEC2011 01:50:21
Stop time of last product within scope	11DEC2011 01:16:43
Total number of level 0 products	15
Number of level 0 products with errors	0

0.1.2 Product Quality Indicators per product

The following table shows a summary for each product used in this report.

#	Product name	Start time	Stop time	Prod err	ISP err sign	ISP miss sign	ISP disc sign	rs sign
0	MIP_NL__OPNPDE20111210_015021_000044453109_00261_51137_0382.N1	10DEC2011 01:50:21	10DEC2011 03:04:27	0	0	0	0	0
1	MIP_NL__OPNPDE20111210_030353_000061483109_00262_51138_0383.N1	10DEC2011 03:03:53	10DEC2011 04:46:21	0	0	0	0	0
2	MIP_NL__OPNPDE20111210_044550_000060833109_00263_51139_0384.N1	10DEC2011 04:45:50	10DEC2011 06:27:13	0	0	0	0	0
3	MIP_NL__OPNPDK20111210_062640_000040113109_00264_51140_7754.N1	10DEC2011 06:26:40	10DEC2011 07:33:30	0	0	0	0	0
4	MIP_NL__OPNPDK20111210_073232_000061293109_00265_51141_7755.N1	10DEC2011 07:32:32	10DEC2011 09:14:41	0	0	0	0	0
5	MIP_NL__OPNPDK20111210_091303_000059813109_00266_51142_7756.N1	10DEC2011 09:13:03	10DEC2011 10:52:44	0	0	0	0	0
6	MIP_NL__OPNPDK20111210_105143_000060273109_00267_51143_7757.N1	10DEC2011 10:51:43	10DEC2011 12:32:10	0	0	0	0	0
7	MIP_NL__OPNPDK20111210_123032_000060063109_00268_51144_7758.N1	10DEC2011 12:30:32	10DEC2011 14:10:38	0	0	0	0	0
8	MIP_NL__OPNPDK20111210_141004_000059583109_00269_51145_7759.N1	10DEC2011 14:10:04	10DEC2011 15:49:22	0	0	0	0	0
9	MIP_NL__OPNPDK20111210_154844_000058413109_00270_51146_7760.N1	10DEC2011 15:48:44	10DEC2011 17:26:05	0	0	0	0	0
10	MIP_NL__OPNPDK20111210_172502_000060303109_00271_51147_7761.N1	10DEC2011 17:25:02	10DEC2011 19:05:32	0	0	0	0	0
11	MIP_NL__OPNPDK20111210_190323_000059953109_00272_51148_7762.N1	10DEC2011 19:03:23	10DEC2011 20:43:18	0	0	0	0	0
12	MIP_NL__OPNPDE20111210_204128_000045333109_00273_51149_0385.N1	10DEC2011 20:41:28	10DEC2011 21:57:01	0	0	0	0	0
13	MIP_NL__OPNPDE20111210_215556_000061173109_00273_51149_0386.N1	10DEC2011 21:55:56	10DEC2011 23:37:52	0	0	0	0	0
14	MIP_NL__OPNPDE20111210_233646_000059983109_00274_51150_0387.N1	10DEC2011 23:36:46	11DEC2011 01:16:43	0	0	0	0	0

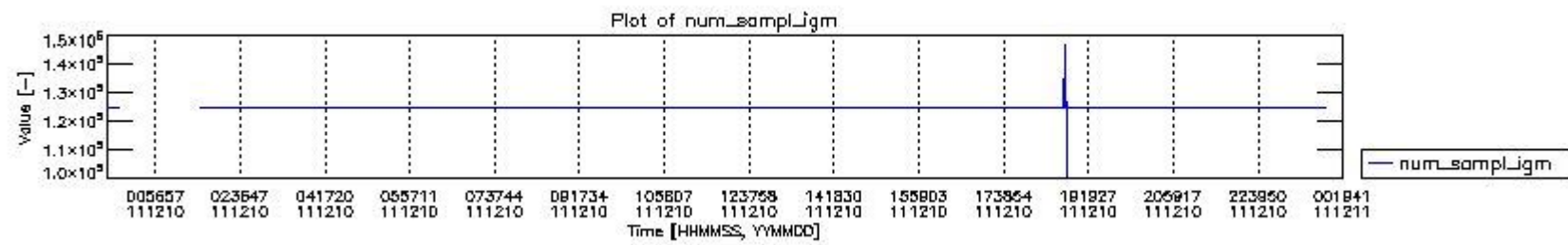
0.2 Instrument Operational Performance Parameters

The following plots give an overview of various instrument parameters for this day. The instrument parameters are part of the auxiliary data field within the source packets of the MIP_NL__0P product. The auxiliary data is normally included twice per interferogram. Note that only the first packet is currently included in monitoring.

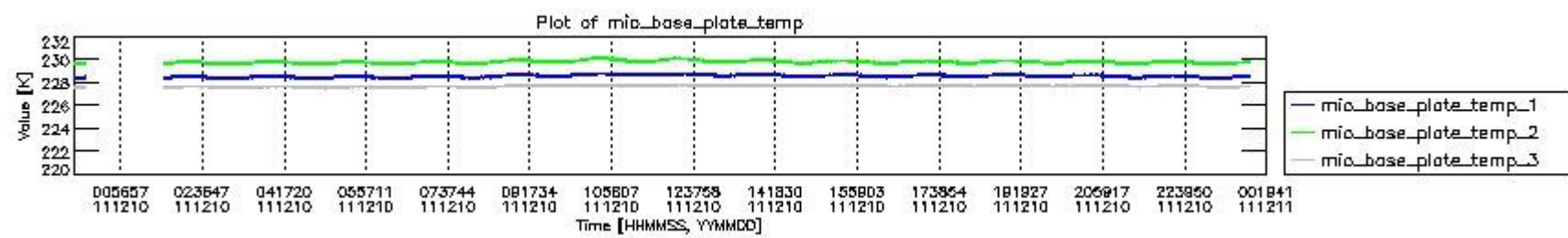
The following table shows the counts of various interferogram number of samples

Number of igm samples	Count [#]	Count [%]
100557	1	0.0025786488
124800	35999	92.828778
124803	2775	7.1557504

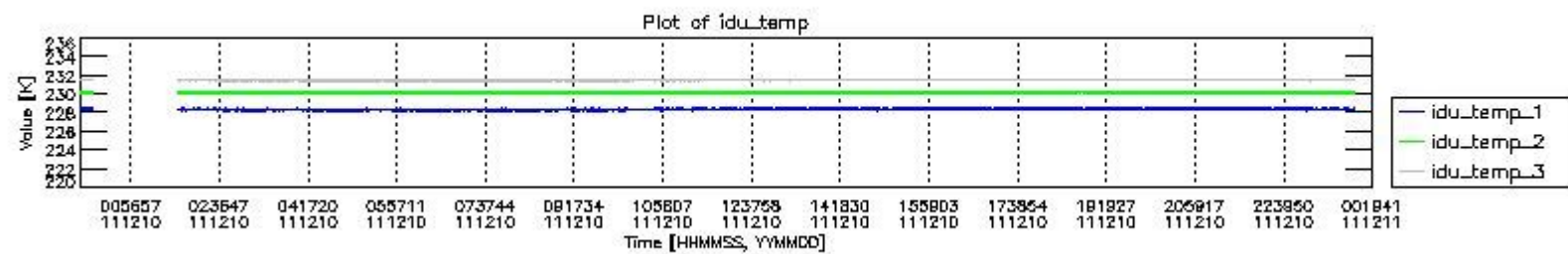
125672	1	0.0025786488
125809	1	0.0025786488
126818	1	0.0025786488
145804	1	0.0025786488
146676	1	0.0025786488



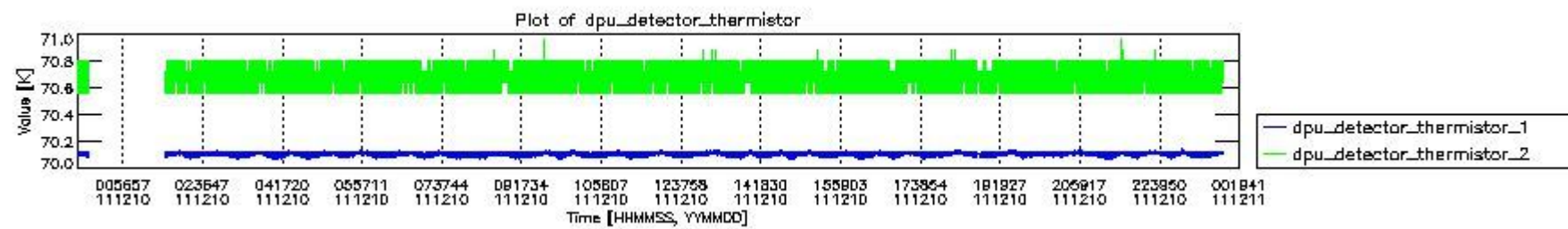
mipas_daily_report_level0_KSPT_L0_4504_N_20111210_0.PNG



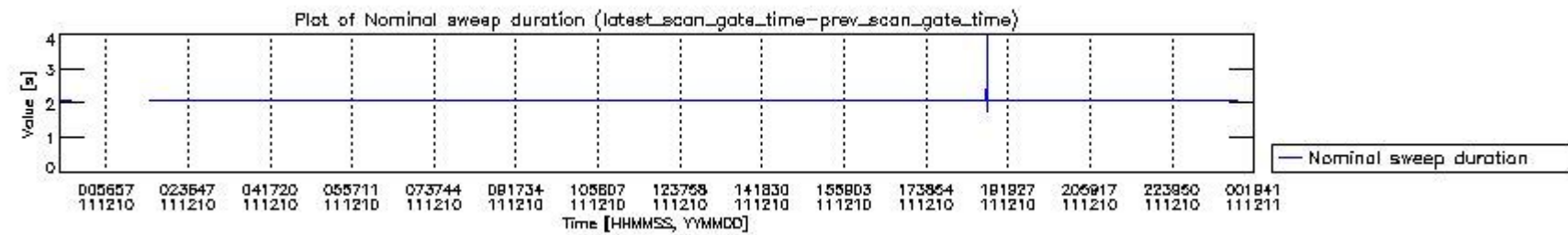
mipas_daily_report_level0_KSPT_L0_4504_N_20111210_1.PNG



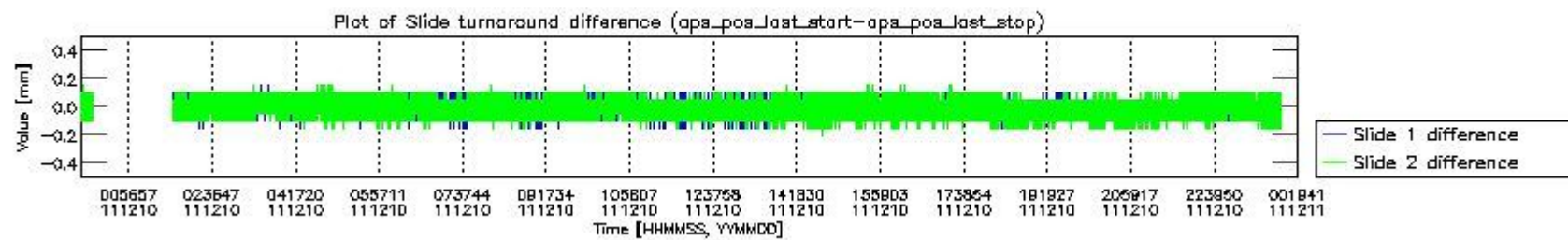
mipas_daily_report_level0_KSPT_L0_4504_N_20111210_2.PNG



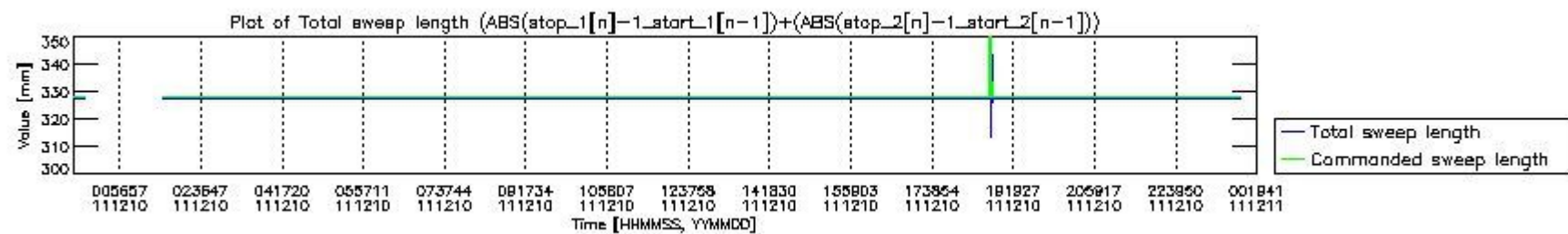
mipas_daily_report_level0_KSPT_L0_4504_N_20111210_3.PNG



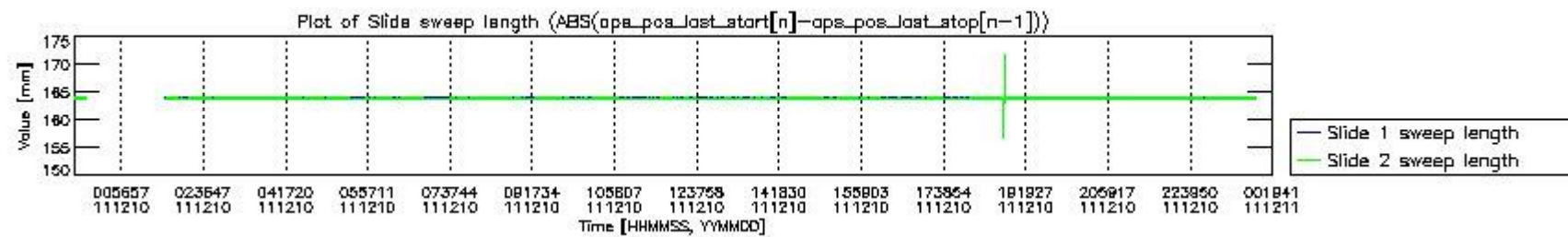
mipas_daily_report_level0_KSPT_L0_4504_N_20111210_4.PNG



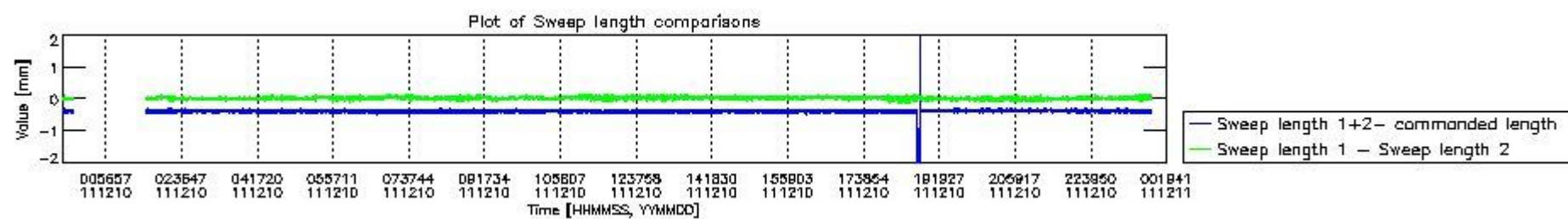
mipas_daily_report_level0_KSPT_L0_4504_N_20111210_5.PNG



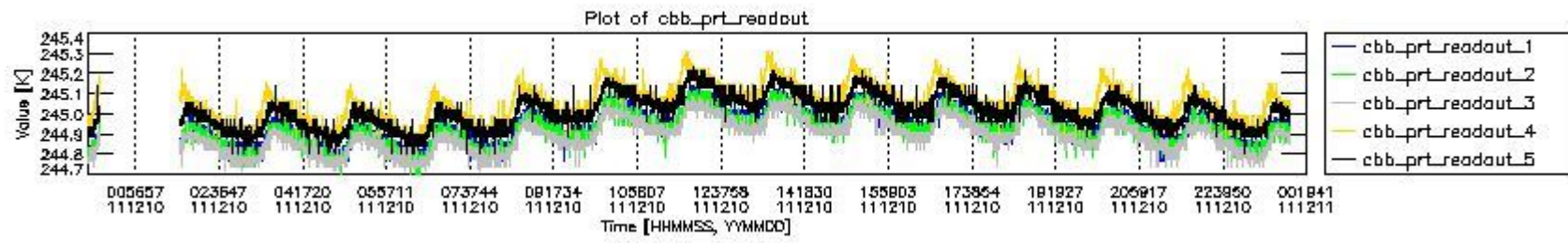
mipas_daily_report_level0_KSPT_L0_4504_N_20111210_6.PNG



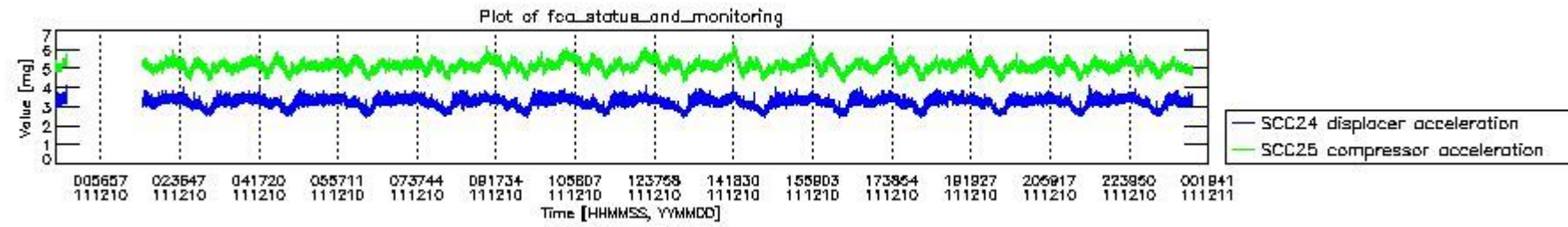
mipas_daily_report_level0_KSPT_L0_4504_N_20111210_7.PNG



mipas_daily_report_level0_KSPT_L0_4504_N_20111210_8.PNG



mipas_daily_report_level0_KSPT_L0_4504_N_20111210_9.PNG

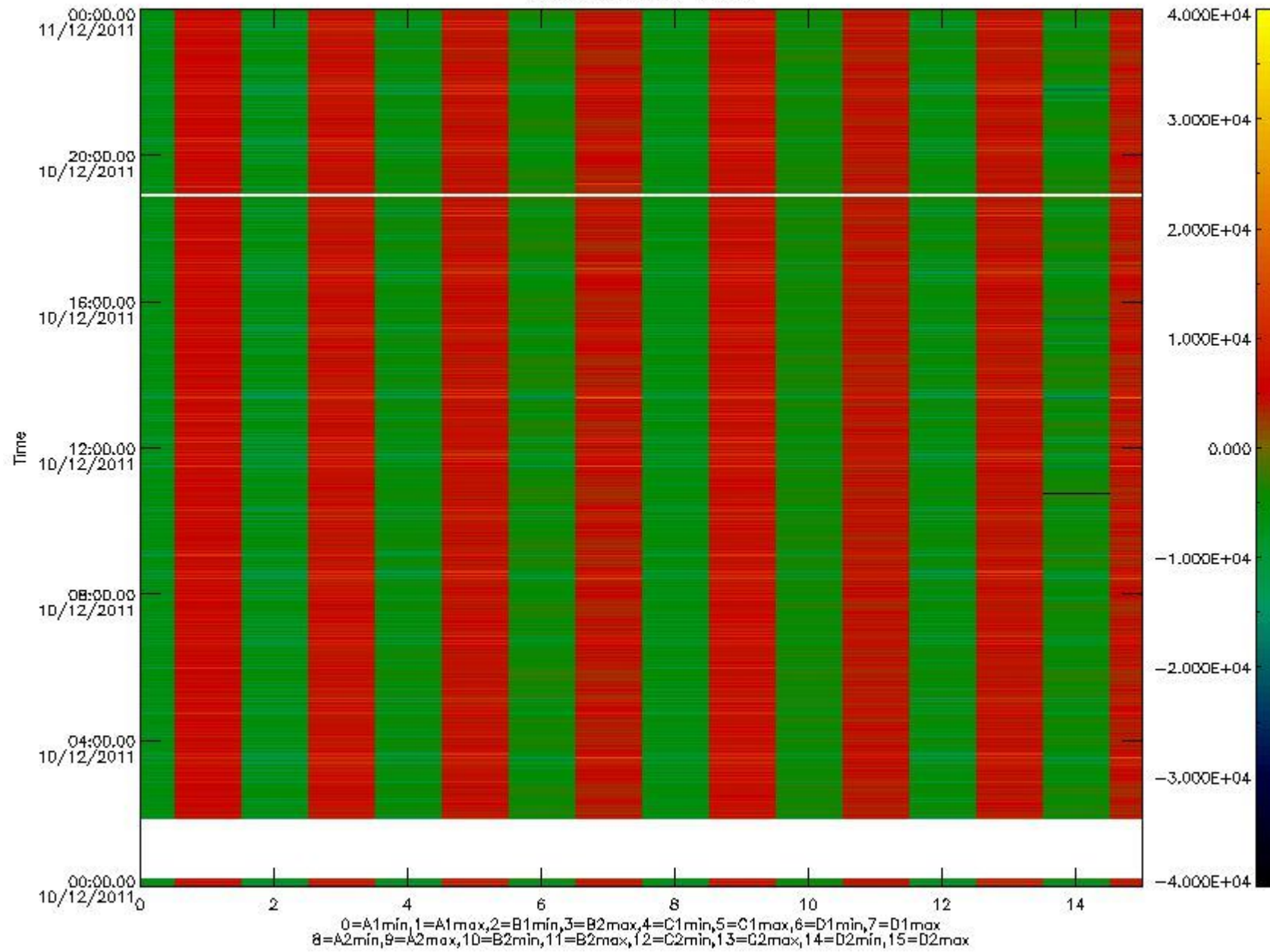


mipas_daily_report_level0_KSPT_L0_4504_N_20111210_10.PNG

The following table shows channel statistics for all channels for this day.

Channel	Min	Max	ADC
A1	-17202	17888	16bit
B1	-17248	15087	16bit
C1	-24597	19276	16bit
D1	-29298	32767	16bit
A2	-14881	17866	16bit
B2	-14853	14606	16bit
C2	-19780	24728	16bit
D2	-32768	32767	16bit

MIPNLOP_MIPSOUPAC_aux_fields_igm_cal, channel statistics plot
Colour indicates value.



mipas_daily_report_level0_KSPT_L0_4504_N_20111210_11.PNG

0.3 ADF monitoring

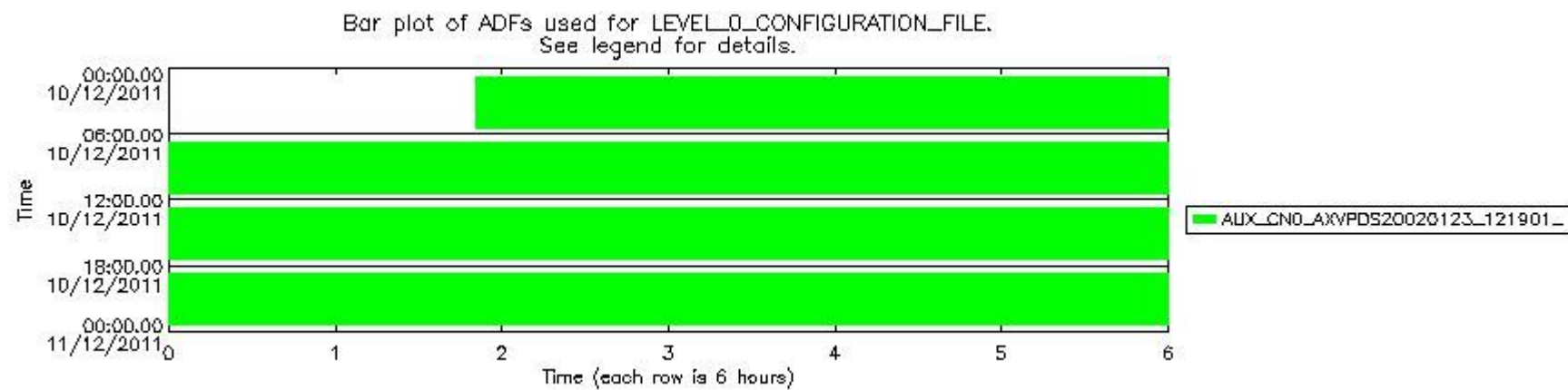
The use of ADFs is shown in two ways:

1. By means of two tables that can be used to find the ADF used for a specific product.
2. By means of plots that show changes in ADF using colours.

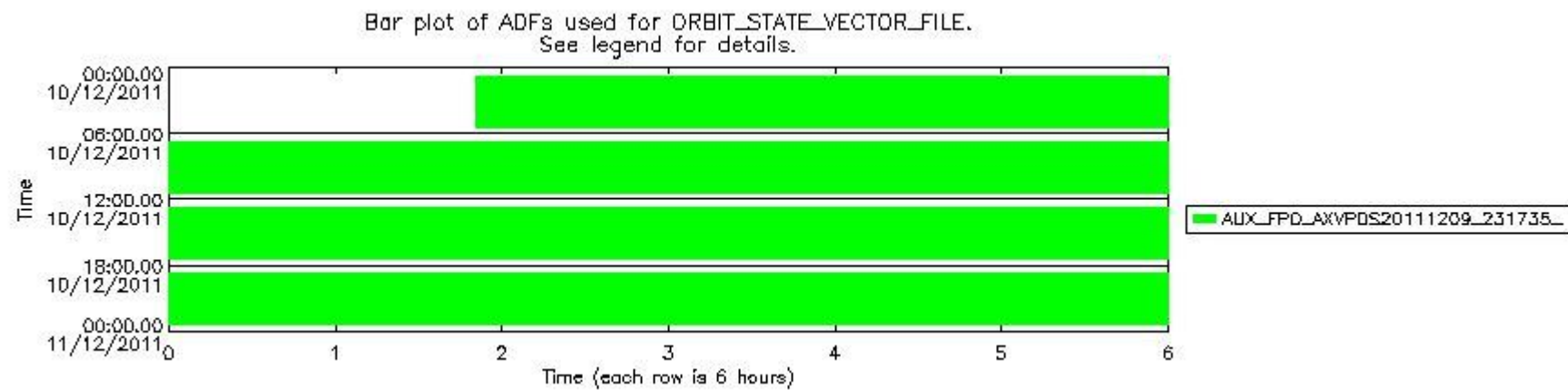
Number	ADF
0	AUX_CN0_AXVPDS20020123_121901_20020101_000000_20200101_000000
1	AUX_FPO_AXVPDS20111209_231735_20111209_192357_20111219_213740

Number	Product name	#CN0	#FPO
0	MIP_NL_0PNPDE20111210_015021_000044453109_00261_51137_0382.N1	0	1

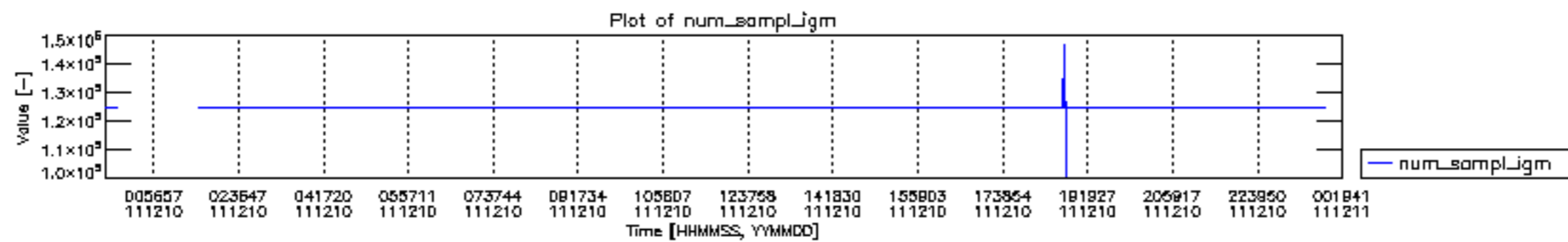
1	MIP_NL__0PNPDE20111210_030353_000061483109_00262_51138_0383.N1	0	1
2	MIP_NL__0PNPDE20111210_044550_000060833109_00263_51139_0384.N1	0	1
3	MIP_NL__0PNPDK20111210_062640_000040113109_00264_51140_7754.N1	0	1
4	MIP_NL__0PNPDK20111210_073232_000061293109_00265_51141_7755.N1	0	1
5	MIP_NL__0PNPDK20111210_091303_000059813109_00266_51142_7756.N1	0	1
6	MIP_NL__0PNPDK20111210_105143_000060273109_00267_51143_7757.N1	0	1
7	MIP_NL__0PNPDK20111210_123032_000060063109_00268_51144_7758.N1	0	1
8	MIP_NL__0PNPDK20111210_141004_000059583109_00269_51145_7759.N1	0	1
9	MIP_NL__0PNPDK20111210_154844_000058413109_00270_51146_7760.N1	0	1
10	MIP_NL__0PNPDK20111210_172502_000060303109_00271_51147_7761.N1	0	1
11	MIP_NL__0PNPDK20111210_190323_000059953109_00272_51148_7762.N1	0	1
12	MIP_NL__0PNPDE20111210_204128_000045333109_00273_51149_0385.N1	0	1
13	MIP_NL__0PNPDE20111210_215556_000061173109_00273_51149_0386.N1	0	1
14	MIP_NL__0PNPDE20111210_233646_000059983109_00274_51150_0387.N1	0	1

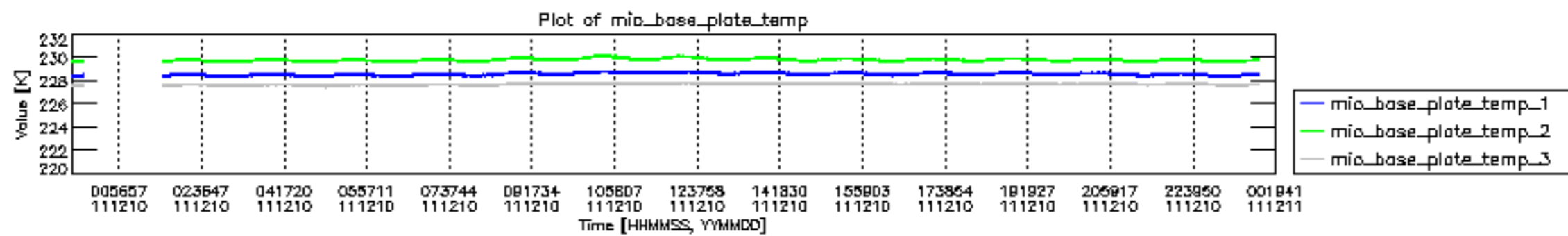


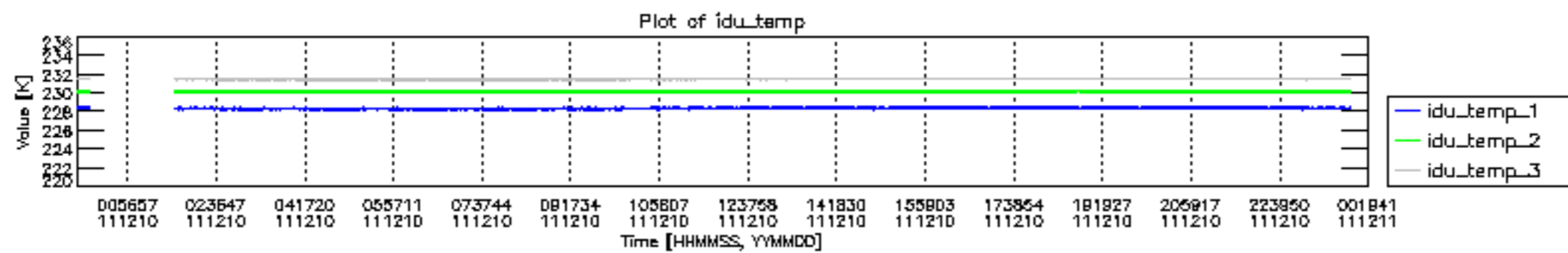
mipas_daily_report_level0_KSPT_L0_4504_N_20111210_12.PNG

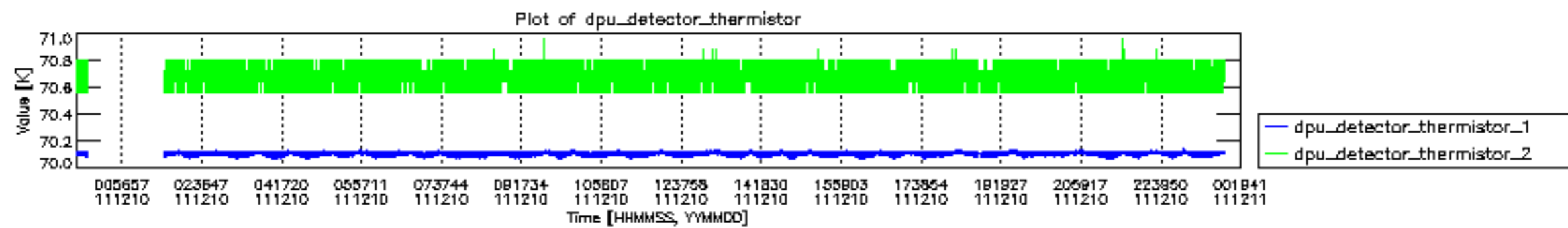


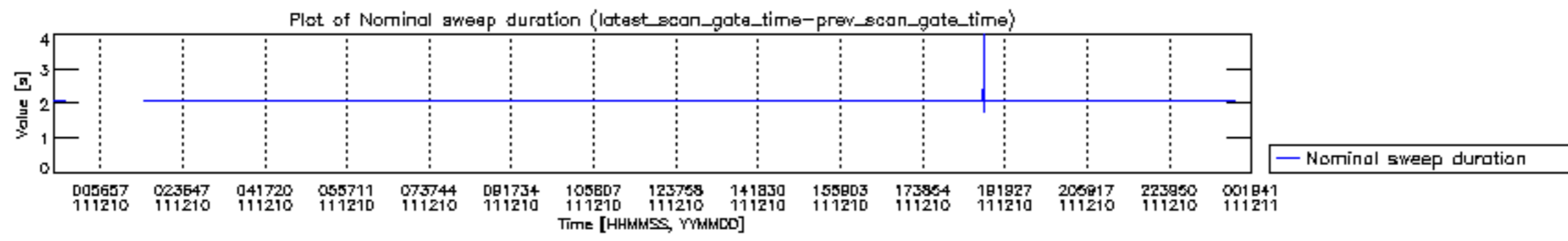
mipas_daily_report_level0_KSPT_L0_4504_N_20111210_13.PNG

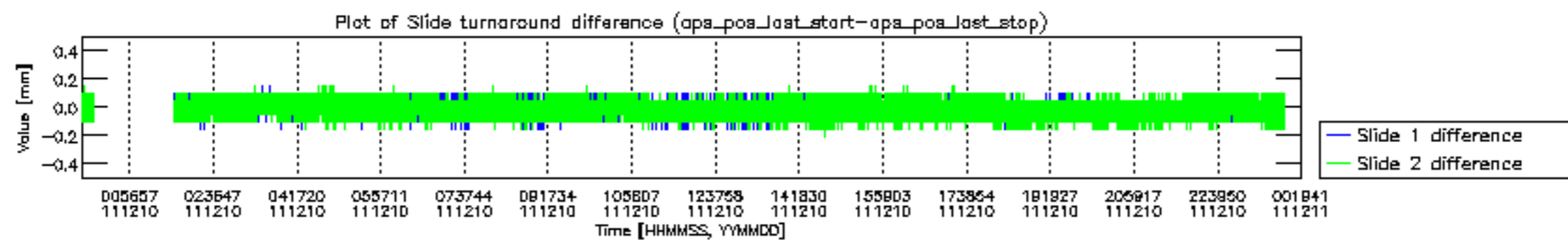


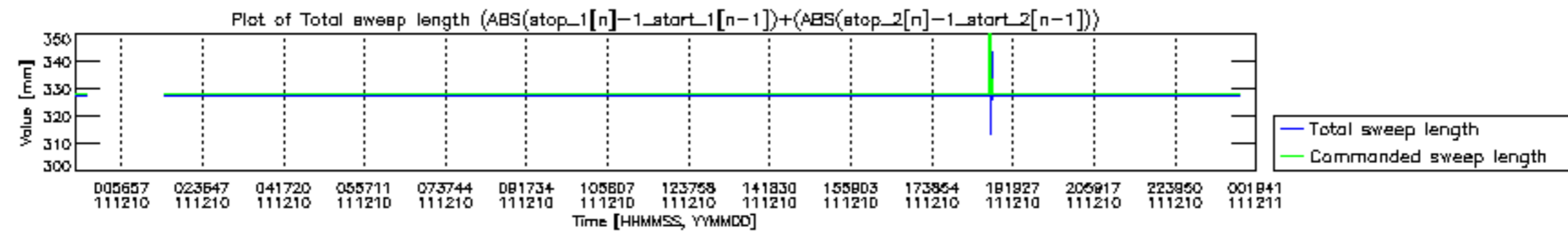


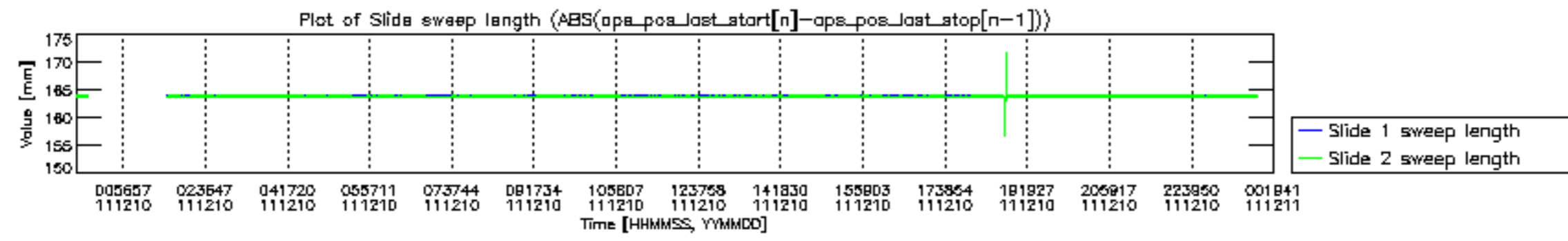


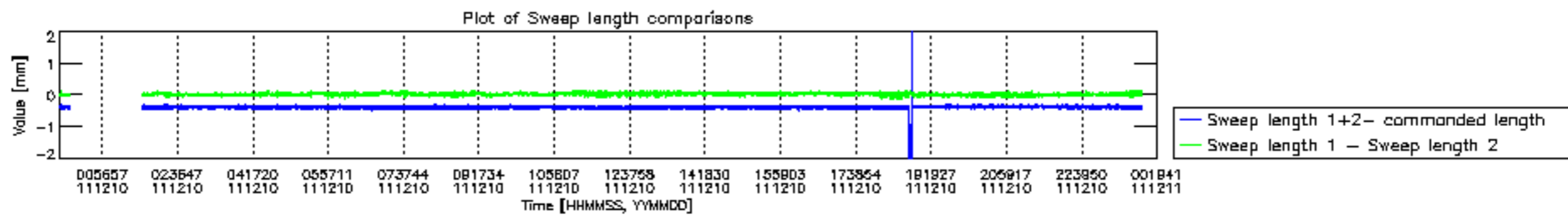


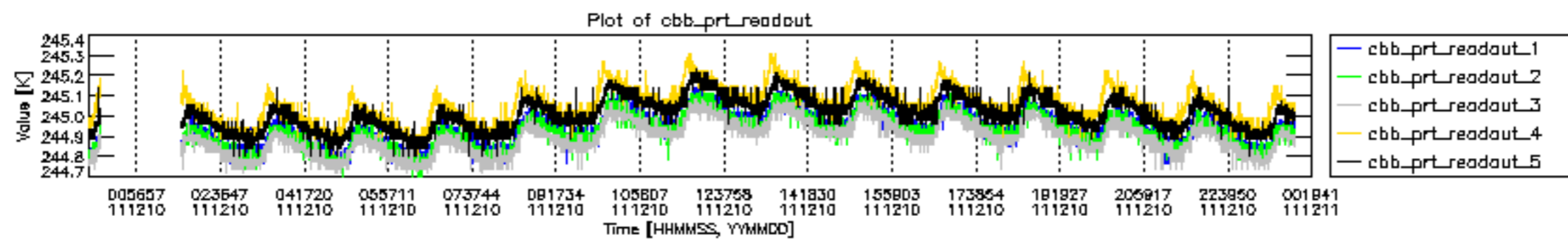


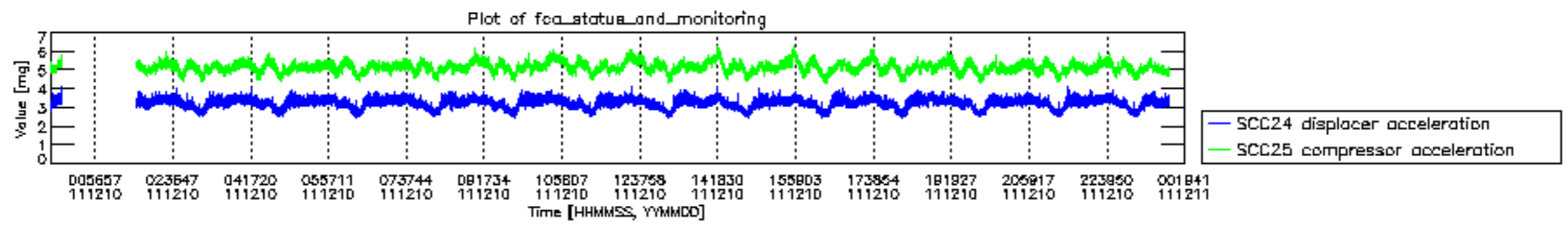












MIPNLOP_MIPSOUPAC_aux_fields_igm_cal, channel statistics plot
 Colour indicates value.

