

## 0. MIPAS Daily Report for level 0 products

### [0.1 General Info](#)

### [0.2 Instrument Operational Performance Parameters](#)

### [0.3 ADF monitoring](#)

## 0.1 General Info

This report contains a daily analysis on parameters extracted from MIPAS level 0 data (The MIP\_NL\_\_0P product).

### 0.1.1 Report summary

The table below shows general characteristics of the data that are included into this report.

Item	Value
Report version	v1.6 08-11-2010
Time of report generation	14DEC2011 05:23:16
Data source version	KSPT_L0/4504-N
Processing scope for products	09DEC2011 00:00:00 to 10DEC2011 00:00:00
Start time of first product within scope	09DEC2011 00:48:47
Stop time of last product within scope	10DEC2011 00:14:28
Total number of level 0 products	15
Number of level 0 products with errors	0

### 0.1.2 Product Quality Indicators per product

The following table shows a summary for each product used in this report.

#	Product name	Start time	Stop time	Prod err	ISP err sign	ISP miss sign	ISP disc sign	rs sign
0	MIP_NL__0PNPDE20111209_004847_000058313109_00246_51122_0375.N1	09DEC2011 00:48:47	09DEC2011 02:25:57	0	0	0	0	0
1	MIP_NL__0PNPDE20111209_022501_000045923109_00247_51123_0376.N1	09DEC2011 02:25:01	09DEC2011 03:41:33	0	0	0	0	0
2	MIP_NL__0PNPDE20111209_034059_000061463109_00248_51124_0377.N1	09DEC2011 03:40:59	09DEC2011 05:23:25	0	0	0	0	0
3	MIP_NL__0PNPDE20111209_052254_000060673109_00249_51125_0378.N1	09DEC2011 05:22:54	09DEC2011 07:04:01	0	0	0	0	0
4	MIP_NL__0PNPDK20111209_070327_000040613109_00250_51126_7745.N1	09DEC2011 07:03:27	09DEC2011 08:11:08	0	0	0	0	0
5	MIP_NL__0PNPDK20111209_081012_000060963109_00251_51127_7746.N1	09DEC2011 08:10:12	09DEC2011 09:51:48	0	0	0	0	0
6	MIP_NL__0PNPDK20111209_095010_000060393109_00252_51128_7747.N1	09DEC2011 09:50:10	09DEC2011 11:30:49	0	0	0	0	0
7	MIP_NL__0PNPDK20111209_112907_000060353109_00253_51129_7748.N1	09DEC2011 11:29:07	09DEC2011 13:09:42	0	0	0	0	0
8	MIP_NL__0PNPDK20111209_130841_000059963109_00254_51130_7749.N1	09DEC2011 13:08:41	09DEC2011 14:48:37	0	0	0	0	0
9	MIP_NL__0PNPDK20111209_144711_000058993109_00255_51131_7750.N1	09DEC2011 14:47:11	09DEC2011 16:25:31	0	0	0	0	0
10	MIP_NL__0PNPDK20111209_162434_000059063109_00256_51132_7751.N1	09DEC2011 16:24:34	09DEC2011 18:03:00	0	0	0	0	0
11	MIP_NL__0PNPDK20111209_180158_000058663109_00257_51133_7752.N1	09DEC2011 18:01:58	09DEC2011 19:39:44	0	0	0	0	0
12	MIP_NL__0PNPDK20111209_193738_000061923109_00258_51134_7753.N1	09DEC2011 19:37:38	09DEC2011 21:20:50	0	0	0	0	0
13	MIP_NL__0PNPDE20111209_211849_000043663109_00259_51135_0379.N1	09DEC2011 21:18:49	09DEC2011 22:31:35	0	0	0	0	0
14	MIP_NL__0PNPDE20111209_223032_000062363109_00259_51135_0380.N1	09DEC2011 22:30:32	10DEC2011 00:14:28	0	0	0	0	0

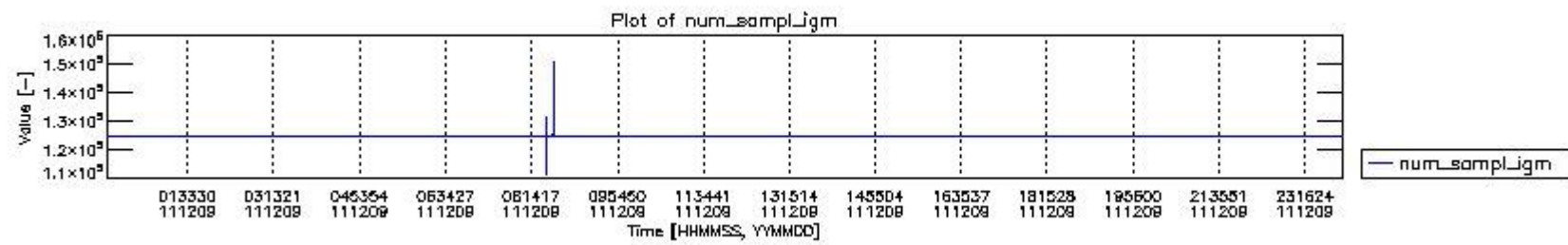
## 0.2 Instrument Operational Performance Parameters

The following plots give an overview of various instrument parameters for this day. The instrument parameters are part of the auxiliary data field within the source packets of the MIP\_NL\_\_0P product. The auxiliary data is normally included twice per interferogram. Note that only the first packet is currently included in monitoring.

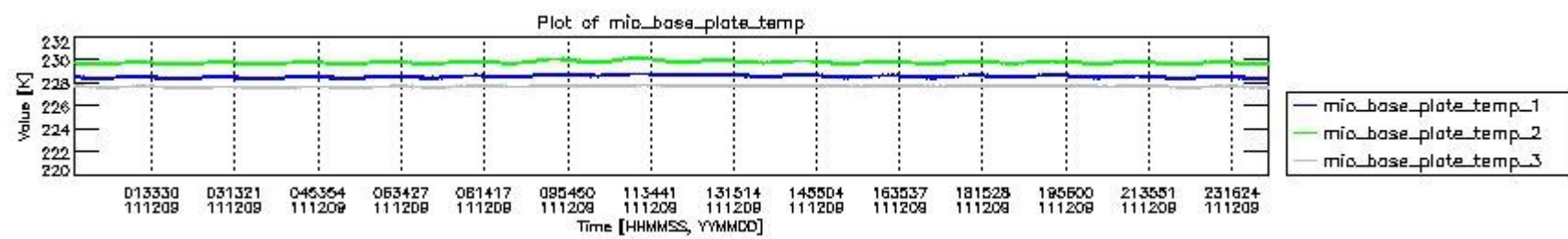
The following table shows the counts of various interferogram number of samples

Number of igm samples	Count [#]	Count [%]
111250	1	0.0023999232
117832	1	0.0023999232
124800	38703	92.884228

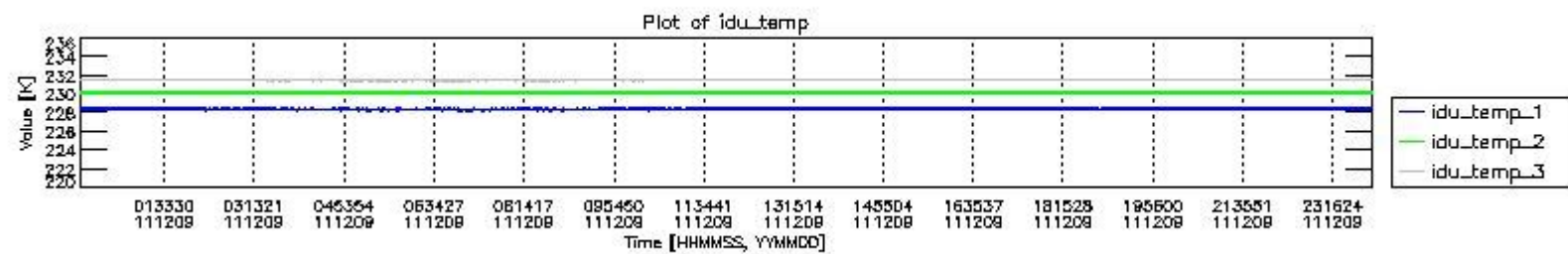
124803	2959	7.1013728
127531	1	0.0023999232
131382	1	0.0023999232
147663	1	0.0023999232
150394	1	0.0023999232



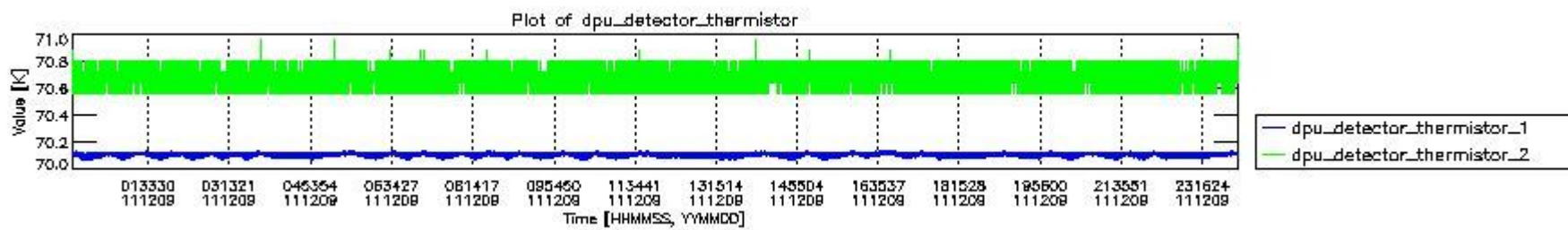
mipas\_daily\_report\_level0\_KSPT\_L0\_4504\_N\_20111209\_0.PNG



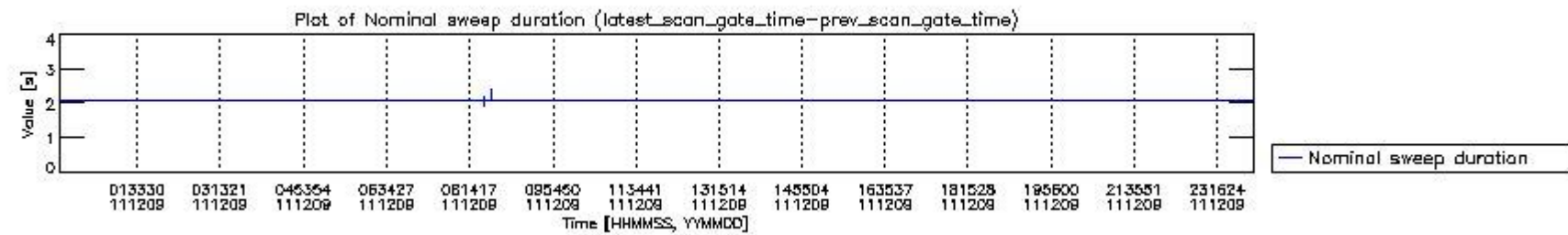
mipas\_daily\_report\_level0\_KSPT\_L0\_4504\_N\_20111209\_1.PNG



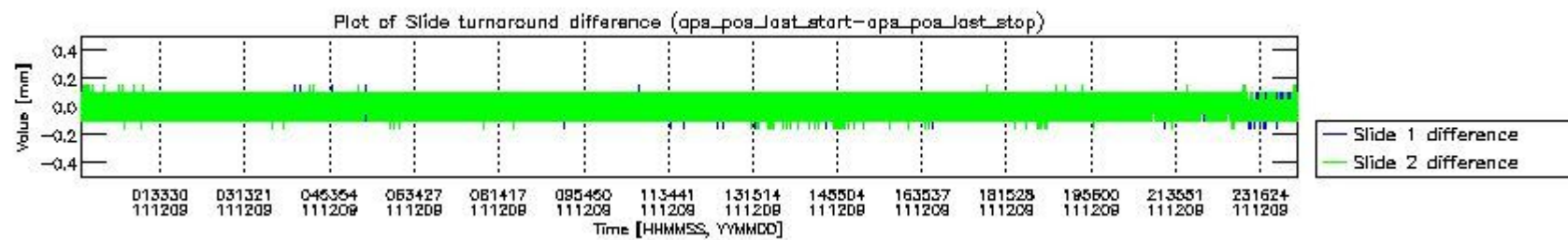
mipas\_daily\_report\_level0\_KSPT\_L0\_4504\_N\_20111209\_2.PNG



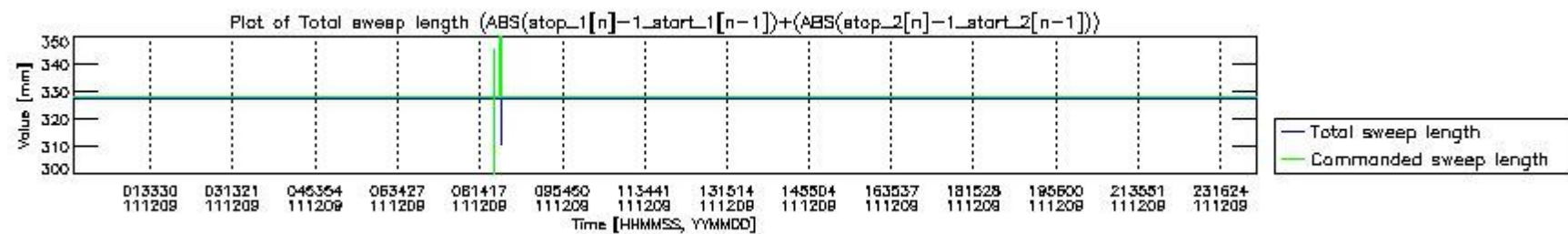
mipas\_daily\_report\_level0\_KSPT\_L0\_4504\_N\_20111209\_3.PNG



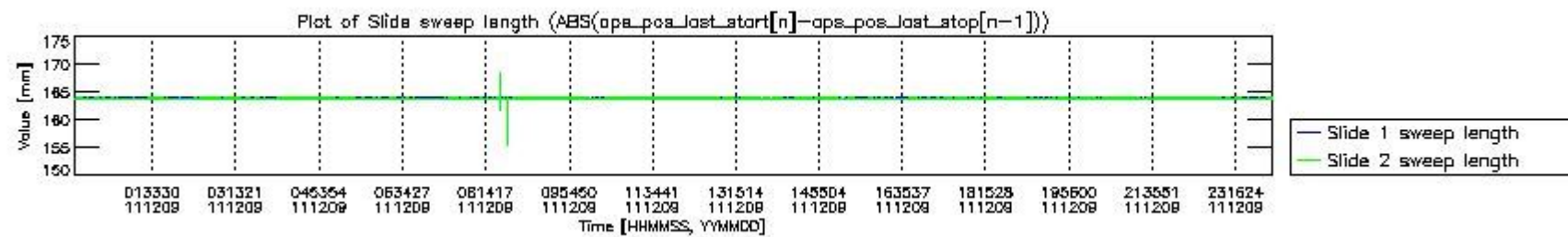
mipas\_daily\_report\_level0\_KSPT\_L0\_4504\_N\_20111209\_4.PNG



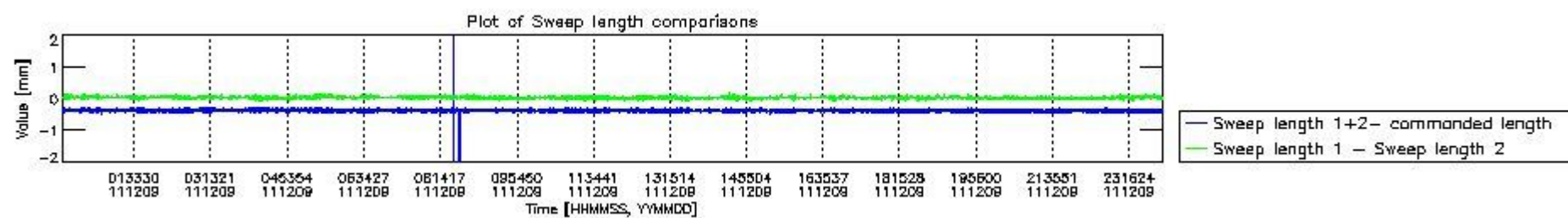
mipas\_daily\_report\_level0\_KSPT\_L0\_4504\_N\_20111209\_5.PNG



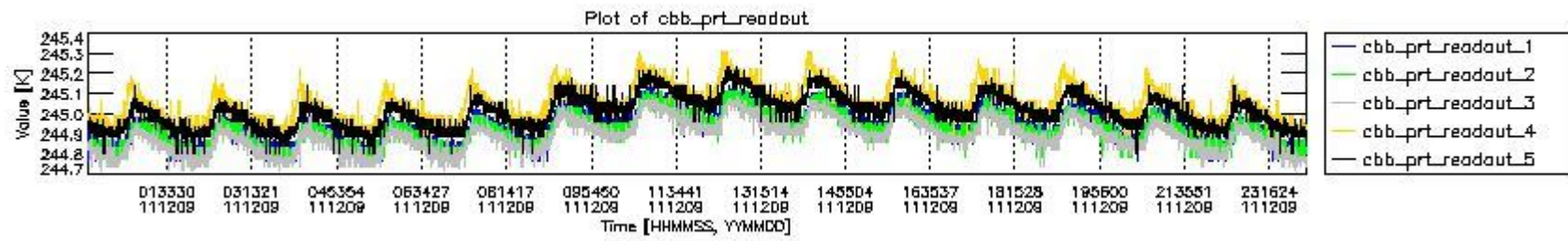
mipas\_daily\_report\_level0\_KSPT\_L0\_4504\_N\_20111209\_6.PNG



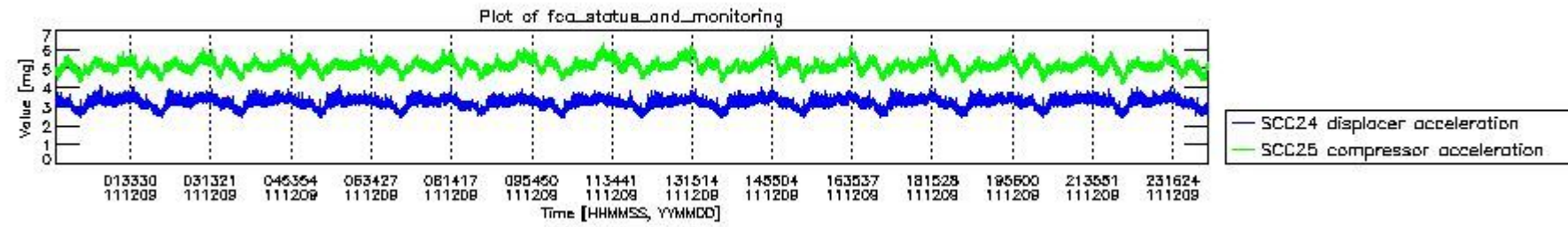
mipas\_daily\_report\_level0\_KSPT\_L0\_4504\_N\_20111209\_7.PNG



mipas\_daily\_report\_level0\_KSPT\_L0\_4504\_N\_20111209\_8.PNG



mipas\_daily\_report\_level0\_KSPT\_L0\_4504\_N\_20111209\_9.PNG



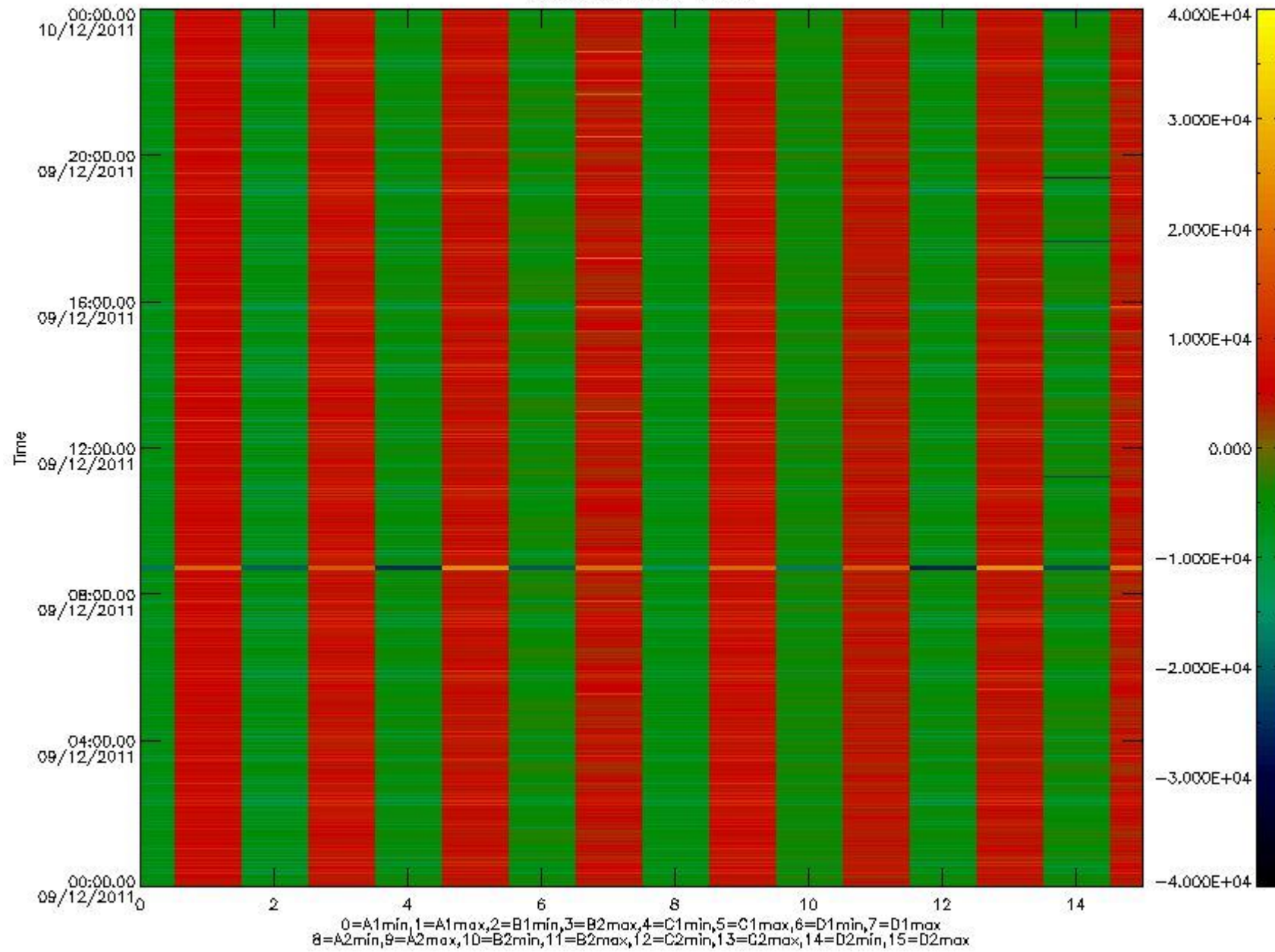
mipas\_daily\_report\_level0\_KSPT\_L0\_4504\_N\_20111209\_10.PNG

The following table shows channel statistics for all channels for this day.

Channel	Min	Max	ADC
A1	-32768	32767	16bit
B1	-32768	32767	16bit
C1	-32768	32767	16bit
D1	-32768	32767	16bit
A2	-32768	32767	16bit
B2	-32768	32767	16bit
C2	-32768	31837	16bit
D2	-32768	32767	16bit



MIPNLOP\_MIPSOUPAC\_aux\_fields\_igm\_cal, channel statistics plot  
Colour indicates value.



mipas\_daily\_report\_level0\_KSPT\_L0\_4504\_N\_20111209\_11.PNG

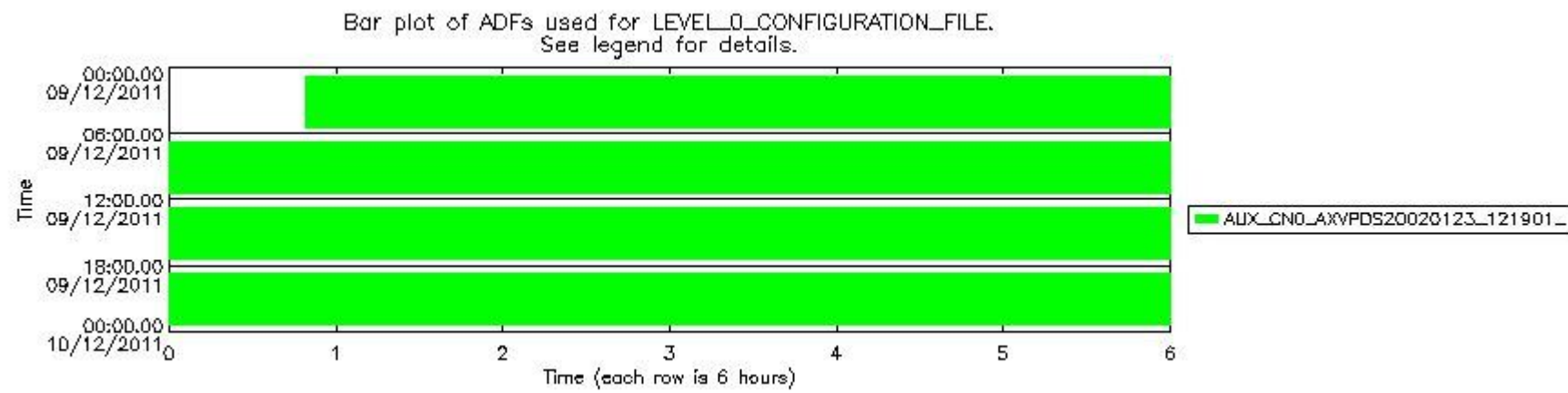
### 0.3 ADF monitoring

The use of ADFs is shown in two ways:

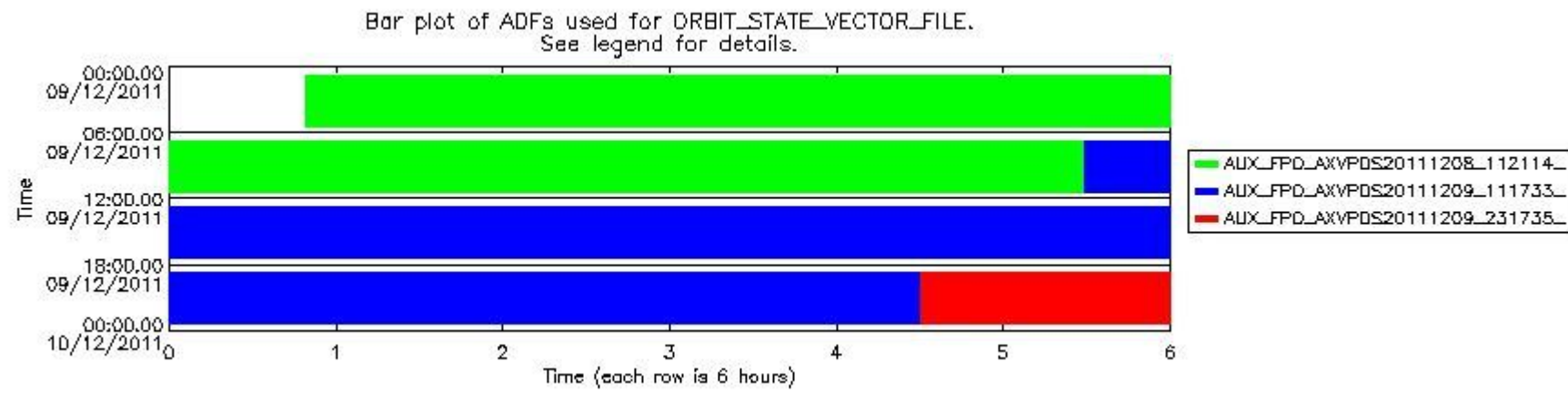
1. By means of two tables that can be used to find the ADF used for a specific product.
2. By means of plots that show changes in ADF using colours.

Number	ADF
0	AUX_CN0_AXVPDS20020123_121901_20020101_000000_20200101_000000
1	AUX_FPO_AXVPDS20111208_112114_20111207_185713_20111217_211055
2	AUX_FPO_AXVPDS20111209_111733_20111208_182028_20111218_203411
3	AUX_FPO_AXVPDS20111209_231735_20111209_192357_20111219_213740

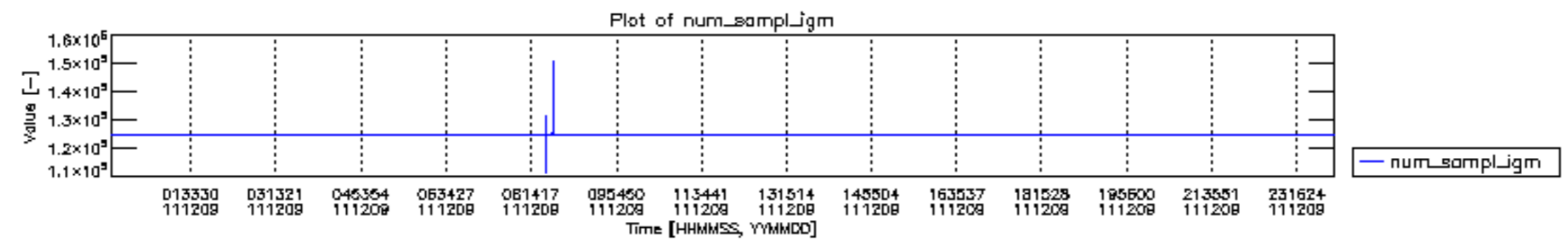
Number	Product name	#CNO	#FPO
0	MIP_NL__0PNPDE20111209_004847_000058313109_00246_51122_0375.N1	0	1
1	MIP_NL__0PNPDE20111209_022501_000045923109_00247_51123_0376.N1	0	1
2	MIP_NL__0PNPDE20111209_034059_000061463109_00248_51124_0377.N1	0	1
3	MIP_NL__0PNPDE20111209_052254_000060673109_00249_51125_0378.N1	0	1
4	MIP_NL__0PNPDK20111209_070327_000040613109_00250_51126_7745.N1	0	1
5	MIP_NL__0PNPDK20111209_081012_000060963109_00251_51127_7746.N1	0	1
6	MIP_NL__0PNPDK20111209_095010_000060393109_00252_51128_7747.N1	0	1
7	MIP_NL__0PNPDK20111209_112907_000060353109_00253_51129_7748.N1	0	2
8	MIP_NL__0PNPDK20111209_130841_000059963109_00254_51130_7749.N1	0	2
9	MIP_NL__0PNPDK20111209_144711_000058993109_00255_51131_7750.N1	0	2
10	MIP_NL__0PNPDK20111209_162434_000059063109_00256_51132_7751.N1	0	2
11	MIP_NL__0PNPDK20111209_180158_000058663109_00257_51133_7752.N1	0	2
12	MIP_NL__0PNPDK20111209_193738_000061923109_00258_51134_7753.N1	0	2
13	MIP_NL__0PNPDE20111209_211849_000043663109_00259_51135_0379.N1	0	2
14	MIP_NL__0PNPDE20111209_223032_000062363109_00259_51135_0380.N1	0	3

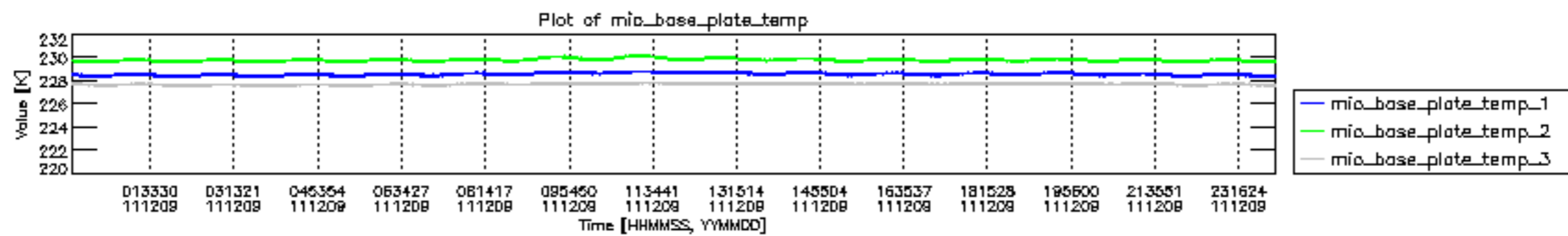


mipas\_daily\_report\_level0\_KSPT\_L0\_4504\_N\_20111209\_12.PNG

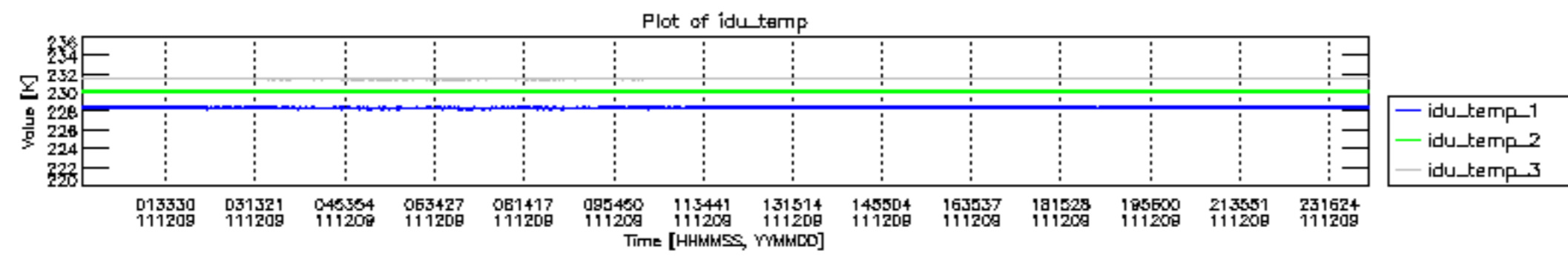


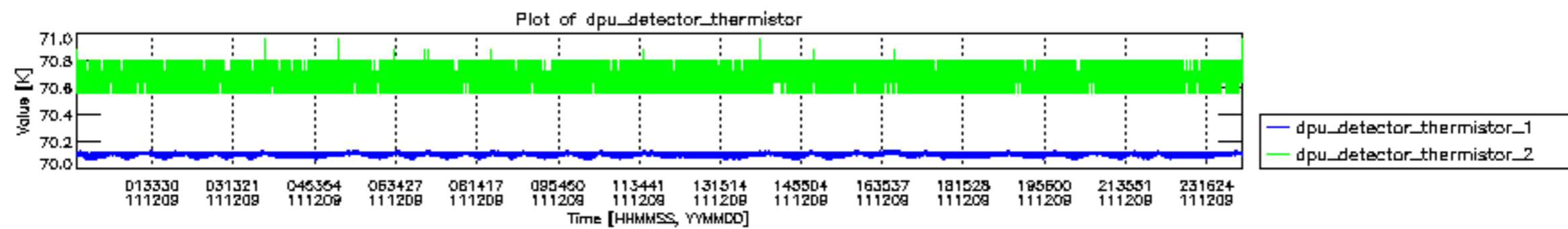
mipas\_daily\_report\_level0\_KSPT\_L0\_4504\_N\_20111209\_13.PNG

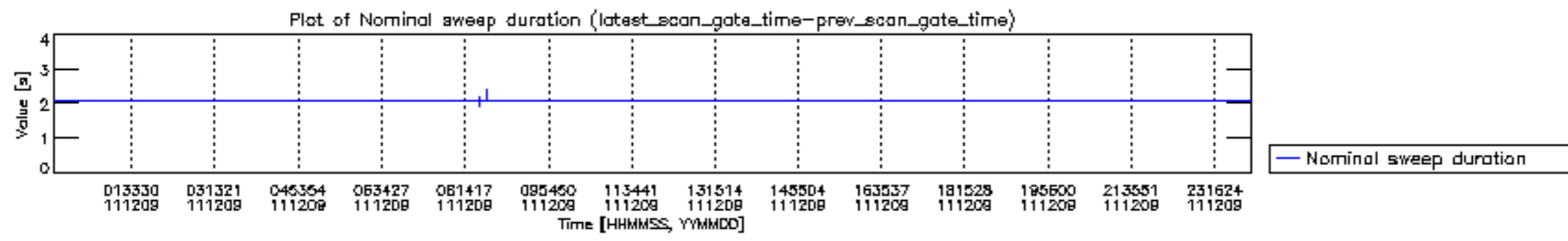


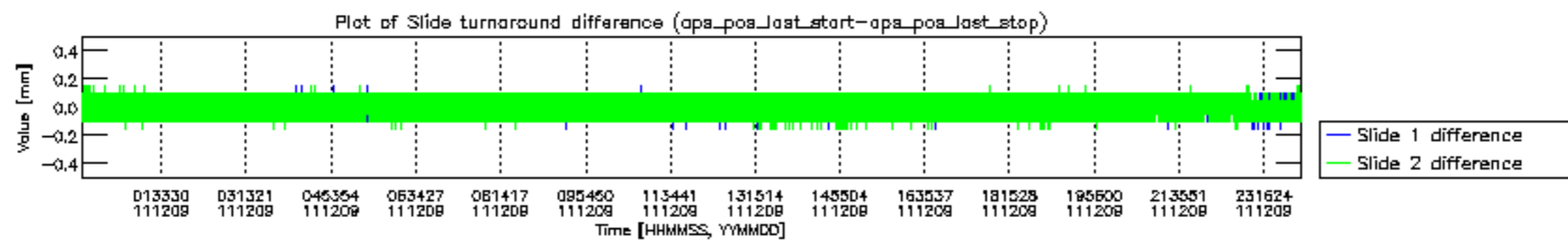


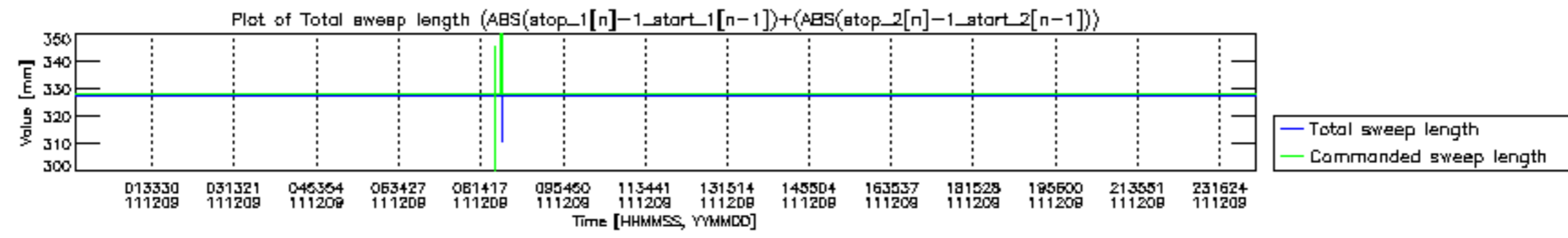






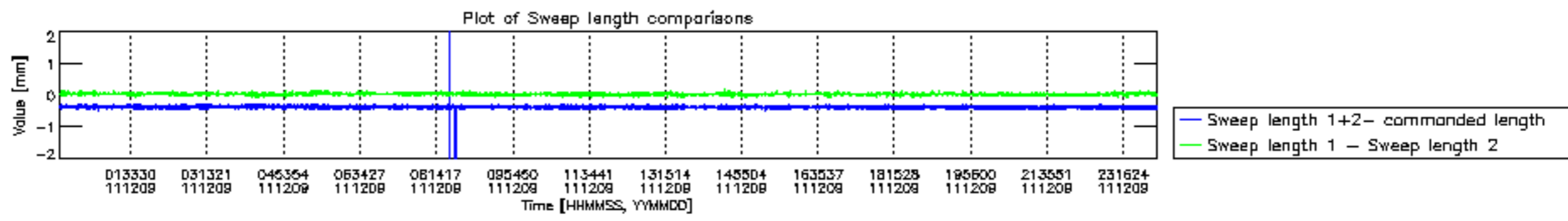


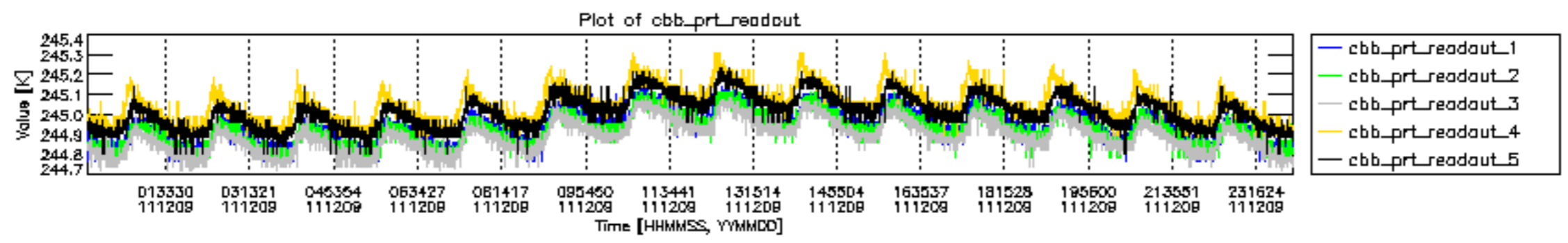


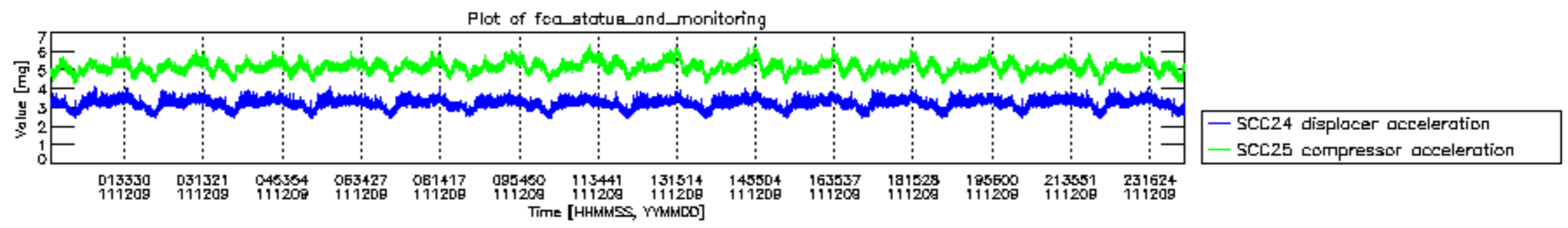












MIPNLOP\_MIPSOUPAC\_aux\_fields\_igm\_cal, channel statistics plot  
 Colour indicates value.

