

## 0. MIPAS Daily Report for level 0 products

### [0.1 General Info](#)

### [0.2 Instrument Operational Performance Parameters](#)

### [0.3 ADF monitoring](#)

## 0.1 General Info

This report contains a daily analysis on parameters extracted from MIPAS level 0 data (The MIP\_NL\_\_0P product).

### 0.1.1 Report summary

The table below shows general characteristics of the data that are included into this report.

Item	Value
Report version	v1.6 08-11-2010
Time of report generation	13DEC2011 05:22:45
Data source version	KSPT_L0/4504-N
Processing scope for products	08DEC2011 00:00:00 to 09DEC2011 00:00:00
Start time of first product within scope	08DEC2011 01:25:17
Stop time of last product within scope	09DEC2011 00:49:43
Total number of level 0 products	13
Number of level 0 products with errors	1

### 0.1.2 Product Quality Indicators per product

The following table shows a summary for each product used in this report.

#	Product name	Start time	Stop time	Prod err	ISP err sign	ISP miss sign	ISP disc sign	rs sign
0	MIP_NL__0PNPDE20111208_012517_000103283109_00232_51108_0368.N1	08DEC2011 01:25:17	08DEC2011 04:17:25	0	0	0	0	0
1	MIP_NL__0PNPDE20111208_041652_000062153109_00234_51110_0369.N1	08DEC2011 04:16:52	08DEC2011 06:00:27	0	0	0	0	0
2	MIP_NL__0PNPDE20111208_055953_000061433109_00235_51111_0370.N1	08DEC2011 05:59:53	08DEC2011 07:42:16	0	0	0	0	0
3	MIP_NL__0PNPDK20111208_074142_000039403109_00236_51112_7737.N1	08DEC2011 07:41:42	08DEC2011 08:47:22	0	0	0	0	0
4	MIP_NL__0PNPDK20111208_084624_000059643109_00237_51113_7738.N1	08DEC2011 08:46:24	08DEC2011 10:25:48	0	0	0	0	0
5	MIP_NL__0PNPDK20111208_102441_000061923109_00238_51114_7739.N1	08DEC2011 10:24:41	08DEC2011 12:07:53	1	1	0	0	0
6	MIP_NL__0PNPDK20111208_120613_000058433109_00239_51115_7740.N1	08DEC2011 12:06:13	08DEC2011 13:43:36	0	0	0	0	0
7	MIP_NL__0PNPDK20111208_134252_000060483109_00240_51116_7741.N1	08DEC2011 13:42:52	08DEC2011 15:23:40	0	0	0	0	0
8	MIP_NL__0PNPDK20111208_152254_000058683109_00241_51117_7742.N1	08DEC2011 15:22:54	08DEC2011 17:00:42	0	0	0	0	0
9	MIP_NL__0PNPDK20111208_165929_000058973109_00242_51118_7743.N1	08DEC2011 16:59:29	08DEC2011 18:37:46	0	0	0	0	0
10	MIP_NL__0PNPDE20111208_201453_000044413109_00244_51120_0372.N1	08DEC2011 20:14:53	08DEC2011 21:28:54	0	0	0	0	0
11	MIP_NL__0PNPDE20111208_212757_000061193109_00244_51120_0373.N1	08DEC2011 21:27:57	08DEC2011 23:09:56	0	0	0	0	0
12	MIP_NL__0PNPDE20111208_230858_000060463109_00245_51121_0374.N1	08DEC2011 23:08:58	09DEC2011 00:49:43	0	0	0	0	0

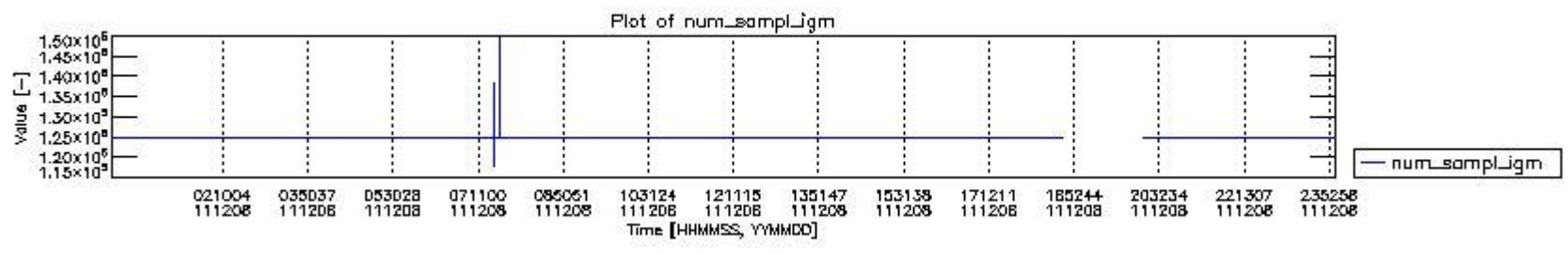
## 0.2 Instrument Operational Performance Parameters

The following plots give an overview of various instrument parameters for this day. The instrument parameters are part of the auxiliary data field within the source packets of the MIP\_NL\_\_0P product. The auxiliary data is normally included twice per interferogram. Note that only the first packet is currently included in monitoring.

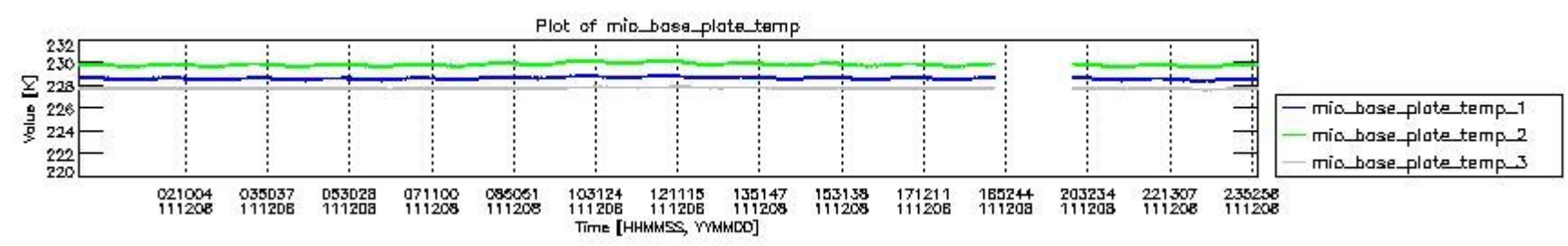
The following table shows the counts of various interferogram number of samples

Number of igm samples	Count [#]	Count [%]
118015	1	0.0025799794
124800	36010	92.905057
124803	2744	7.0794634
127308	1	0.0025799794
131362	1	0.0025799794

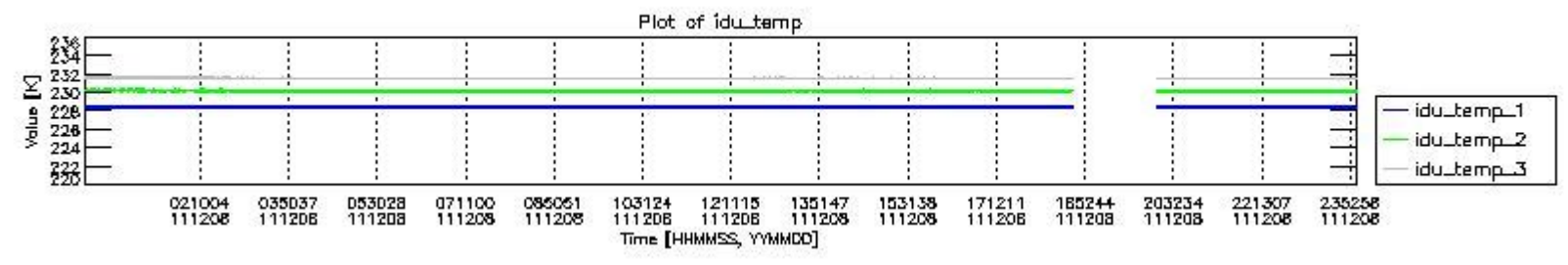
138147	1	0.0025799794
147440	1	0.0025799794
149948	1	0.0025799794



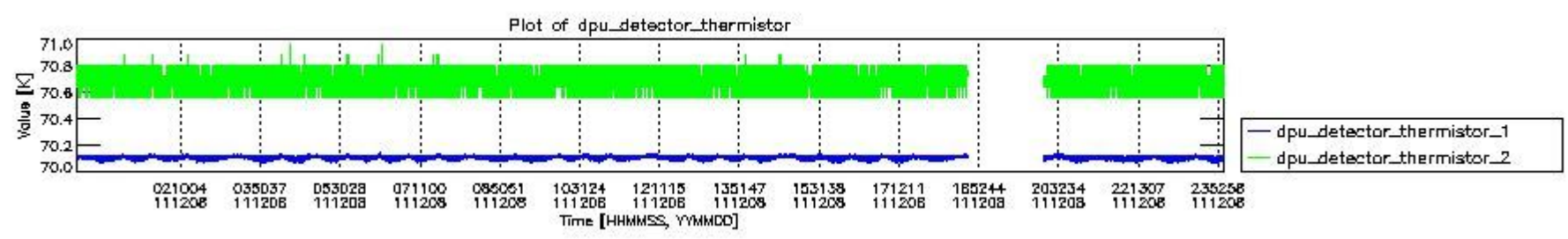
mipas\_daily\_report\_level0\_KSPT\_L0\_4504\_N\_20111208\_0.PNG



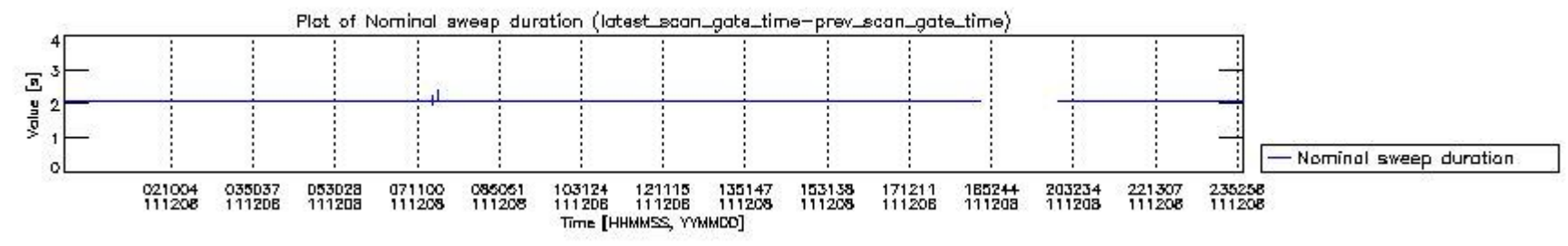
mipas\_daily\_report\_level0\_KSPT\_L0\_4504\_N\_20111208\_1.PNG



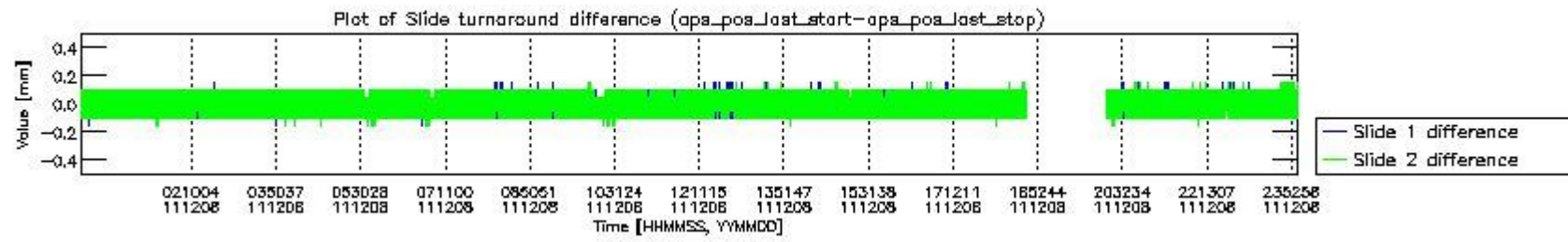
mipas\_daily\_report\_level0\_KSPT\_L0\_4504\_N\_20111208\_2.PNG



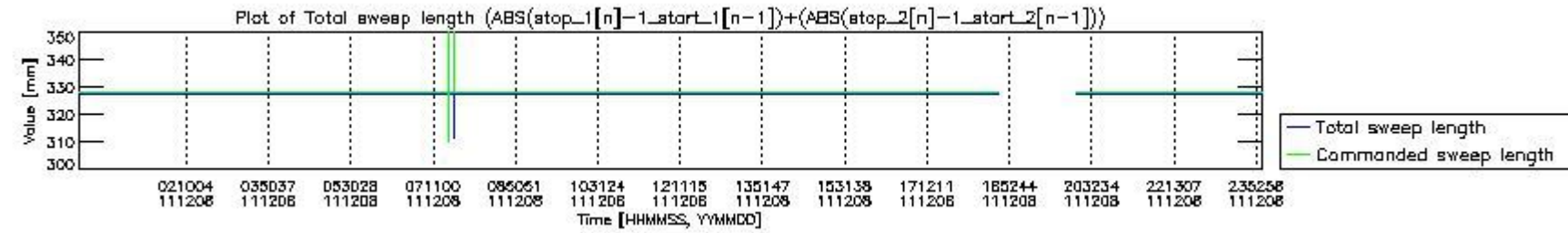
mipas\_daily\_report\_level0\_KSPT\_L0\_4504\_N\_20111208\_3.PNG



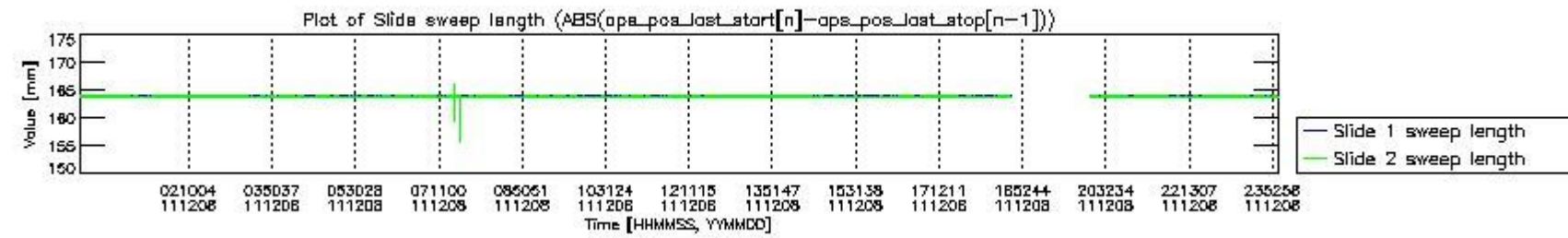
mipas\_daily\_report\_level0\_KSPT\_L0\_4504\_N\_20111208\_4.PNG



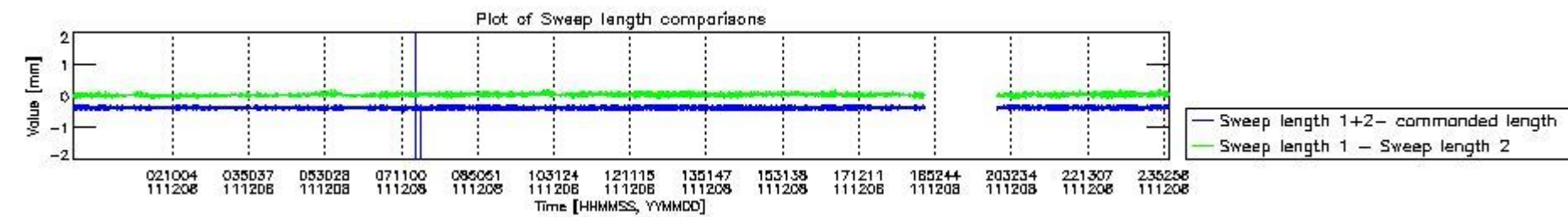
mipas\_daily\_report\_level0\_KSPT\_L0\_4504\_N\_20111208\_5.PNG



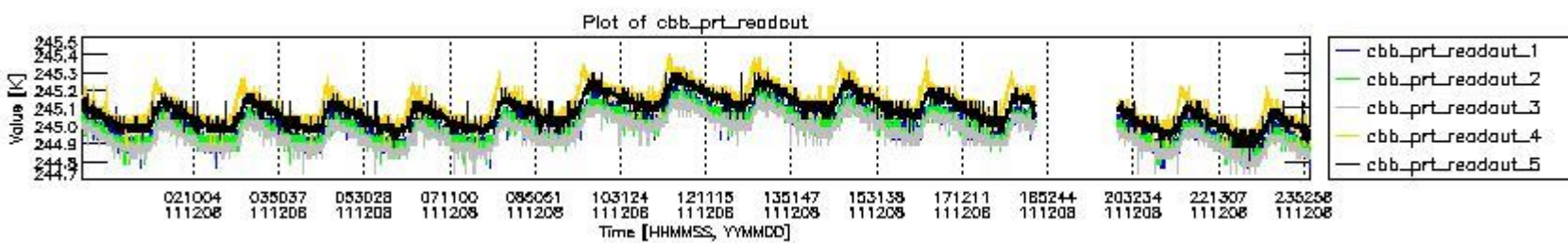
mipas\_daily\_report\_level0\_KSPT\_L0\_4504\_N\_20111208\_6.PNG



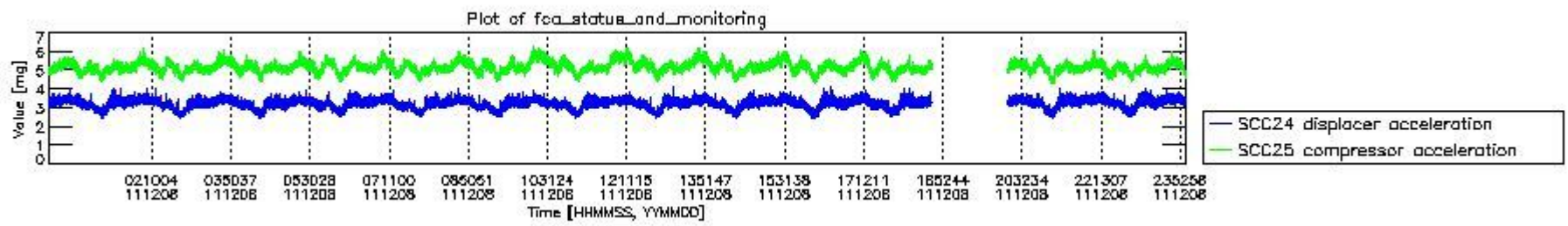
mipas\_daily\_report\_level0\_KSPT\_L0\_4504\_N\_20111208\_7.PNG



mipas\_daily\_report\_level0\_KSPT\_L0\_4504\_N\_20111208\_8.PNG



mipas\_daily\_report\_level0\_KSPT\_L0\_4504\_N\_20111208\_9.PNG

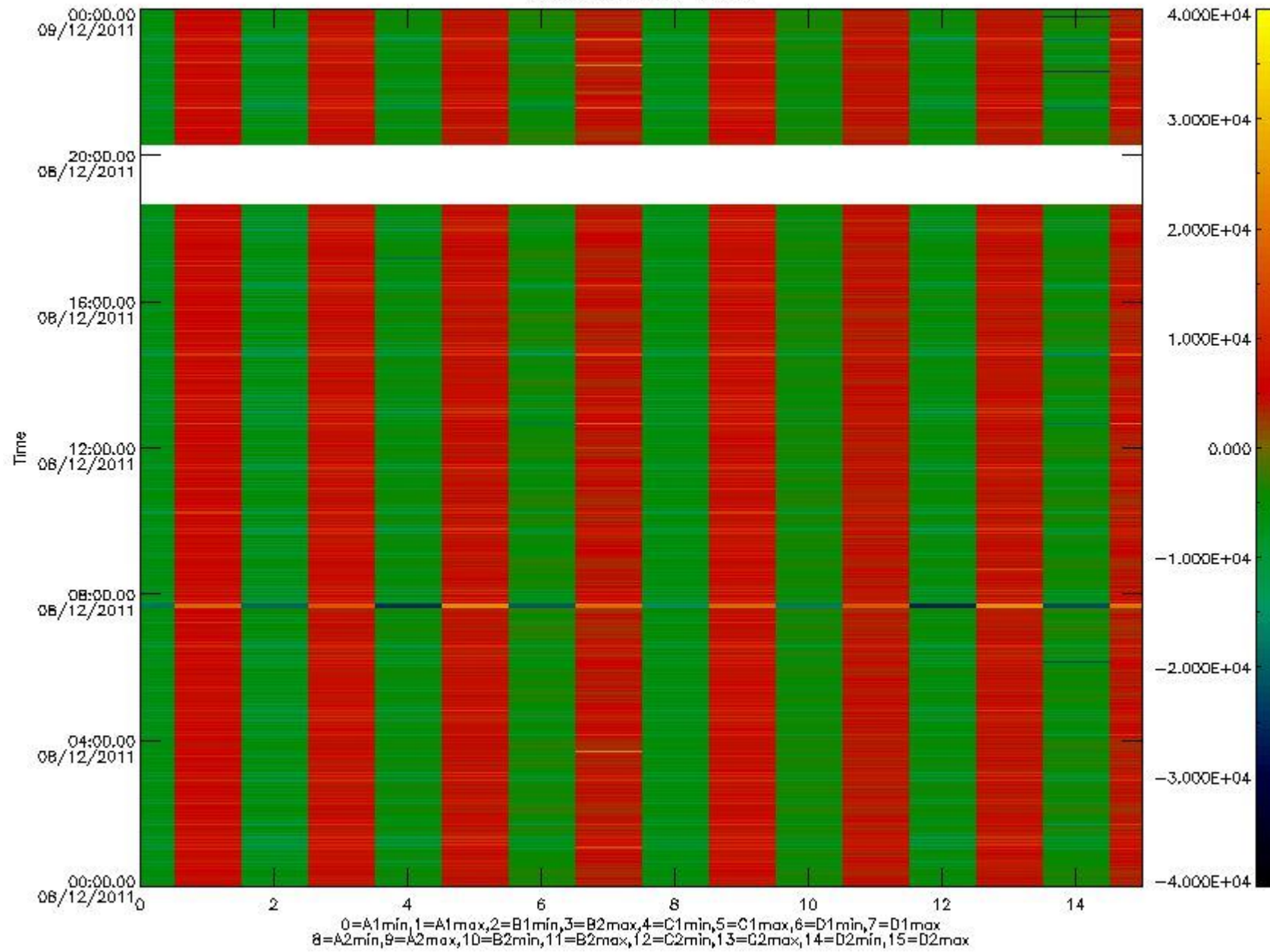


mipas\_daily\_report\_level0\_KSPT\_L0\_4504\_N\_20111208\_10.PNG

The following table shows channel statistics for all channels for this day.

Channel	Min	Max	ADC
A1	-18257	19343	16bit
B1	-20662	17745	16bit
C1	-25218	25060	16bit
D1	-31395	32767	16bit
A2	-15841	19564	16bit
B2	-18522	18179	16bit
C2	-26219	25781	16bit
D2	-32768	32767	16bit

MIPNLOP\_MIPSOUPAC\_aux\_fields\_igm\_cal, channel statistics plot  
Colour indicates value.



mipas\_daily\_report\_level0\_KSPT\_L0\_4504\_N\_20111208\_11.PNG

### 0.3 ADF monitoring

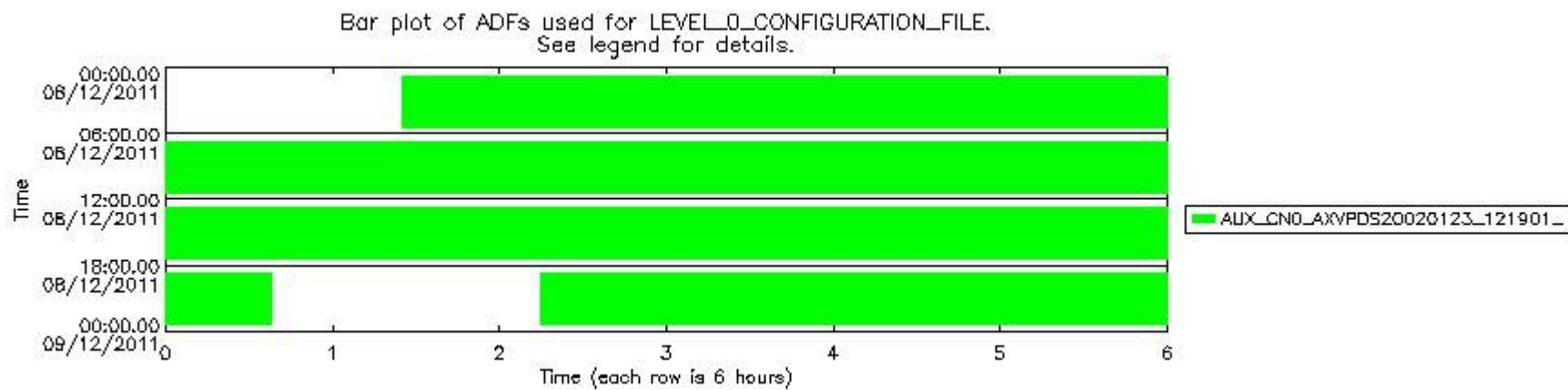
The use of ADFs is shown in two ways:

1. By means of two tables that can be used to find the ADF used for a specific product.
2. By means of plots that show changes in ADF using colours.

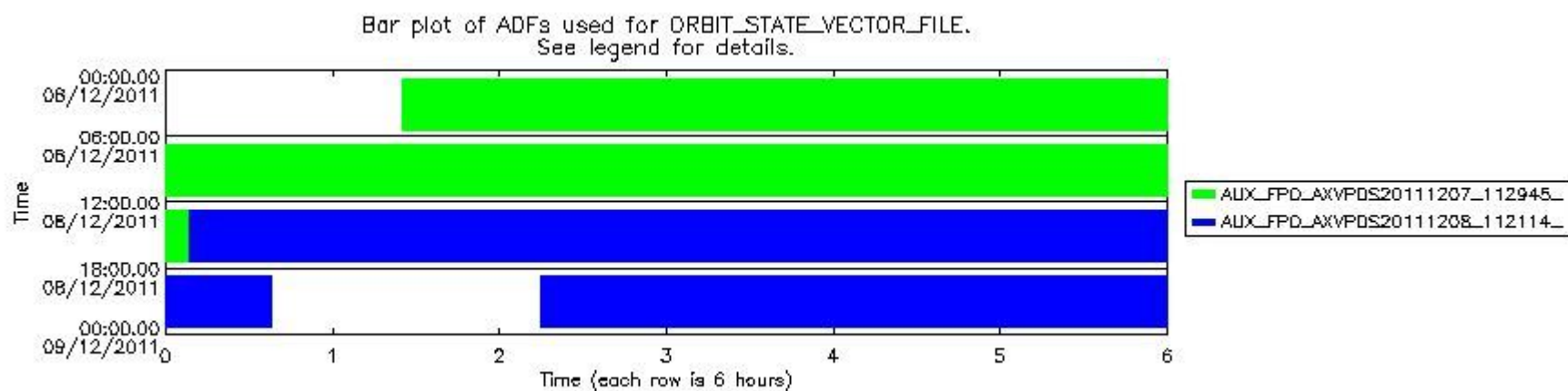
Number	ADF
0	AUX_CN0_AXVPDS20020123_121901_20020101_000000_20200101_000000
1	AUX_FPO_AXVPDS20111207_112945_20111207_085549_20111217_110932
2	AUX_FPO_AXVPDS20111208_112114_20111207_185713_20111217_211055

Number	Product name	#CN0	#FPO
--------	--------------	------	------

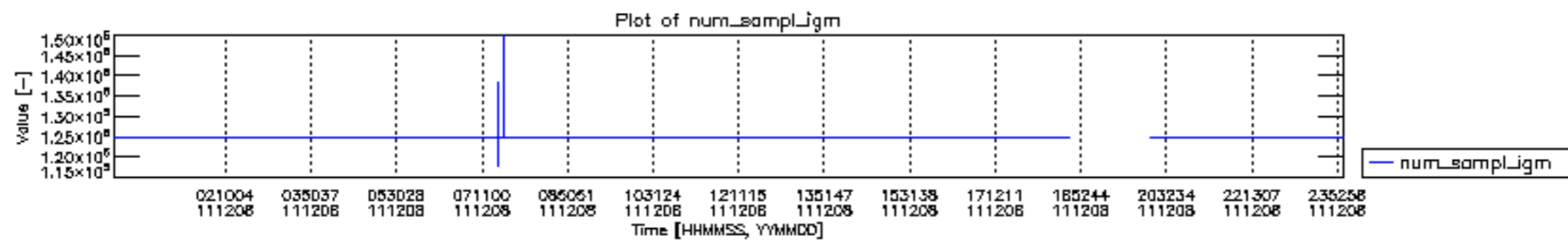
0	MIP_NL__0PNPDE20111208_012517_000103283109_00232_51108_0368.N1	0	1
1	MIP_NL__0PNPDE20111208_041652_000062153109_00234_51110_0369.N1	0	1
2	MIP_NL__0PNPDE20111208_055953_000061433109_00235_51111_0370.N1	0	1
3	MIP_NL__0PNPDK20111208_074142_000039403109_00236_51112_7737.N1	0	1
4	MIP_NL__0PNPDK20111208_084624_000059643109_00237_51113_7738.N1	0	1
5	MIP_NL__0PNPDK20111208_102441_000061923109_00238_51114_7739.N1	0	1
6	MIP_NL__0PNPDK20111208_120613_000058433109_00239_51115_7740.N1	0	2
7	MIP_NL__0PNPDK20111208_134252_000060483109_00240_51116_7741.N1	0	2
8	MIP_NL__0PNPDK20111208_152254_000058683109_00241_51117_7742.N1	0	2
9	MIP_NL__0PNPDK20111208_165929_000058973109_00242_51118_7743.N1	0	2
10	MIP_NL__0PNPDE20111208_201453_000044413109_00244_51120_0372.N1	0	2
11	MIP_NL__0PNPDE20111208_212757_000061193109_00244_51120_0373.N1	0	2
12	MIP_NL__0PNPDE20111208_230858_000060463109_00245_51121_0374.N1	0	2

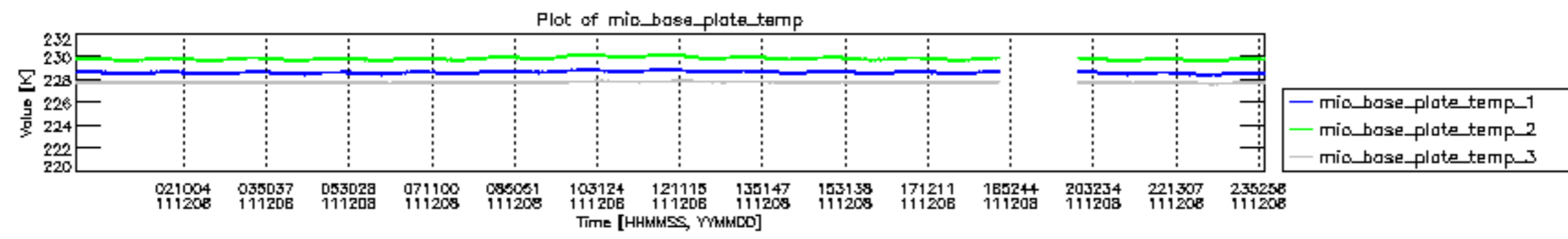


mipas\_daily\_report\_level0\_KSPT\_L0\_4504\_N\_20111208\_12.PNG

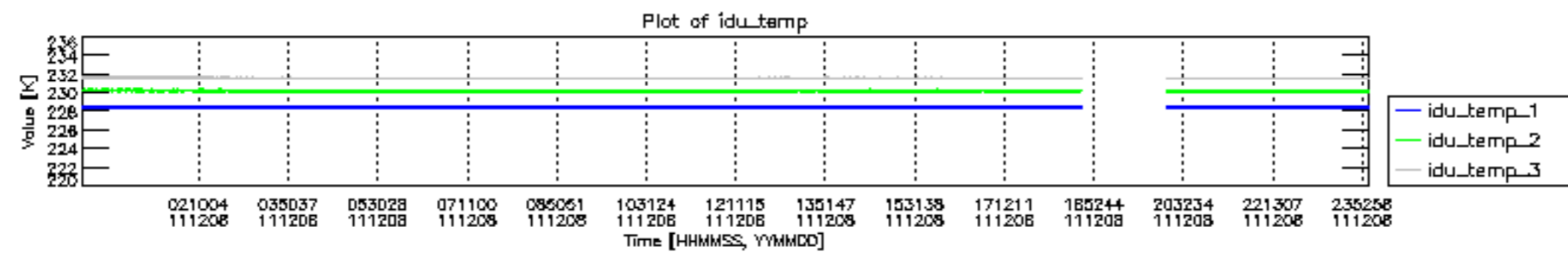


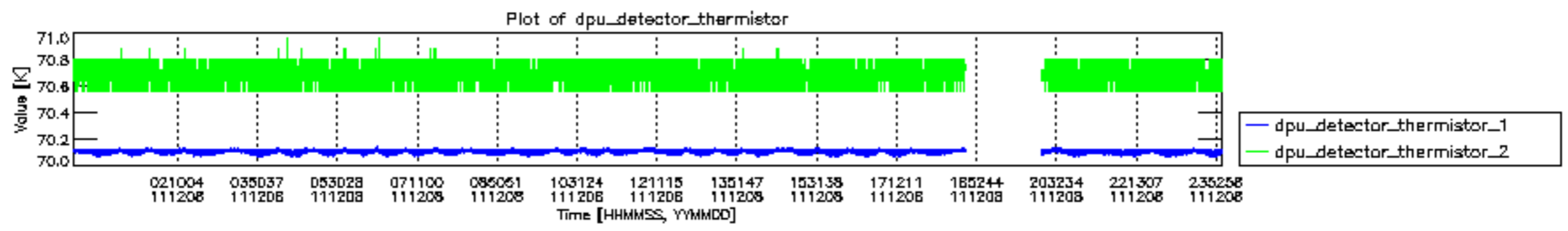
mipas\_daily\_report\_level0\_KSPT\_L0\_4504\_N\_20111208\_13.PNG

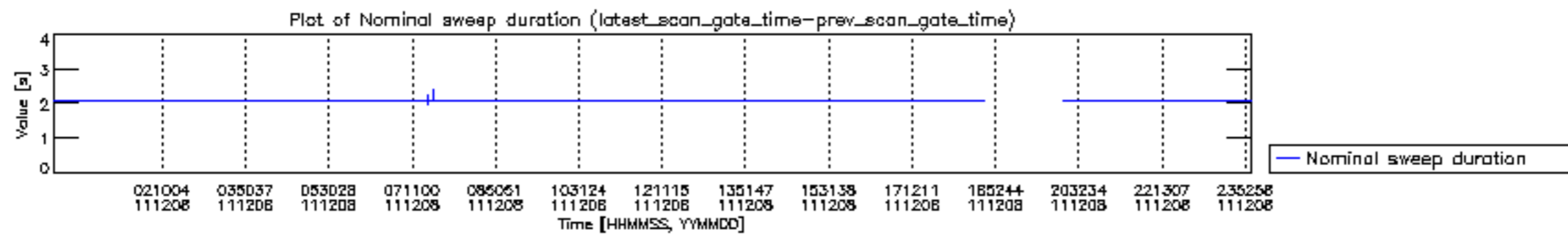


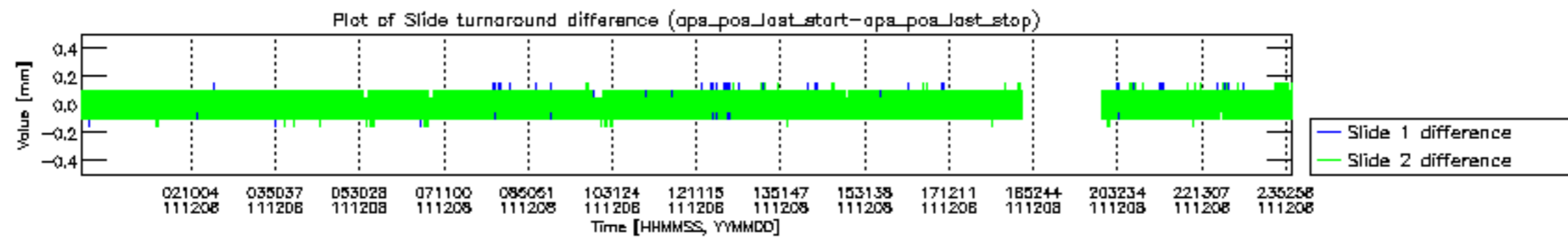


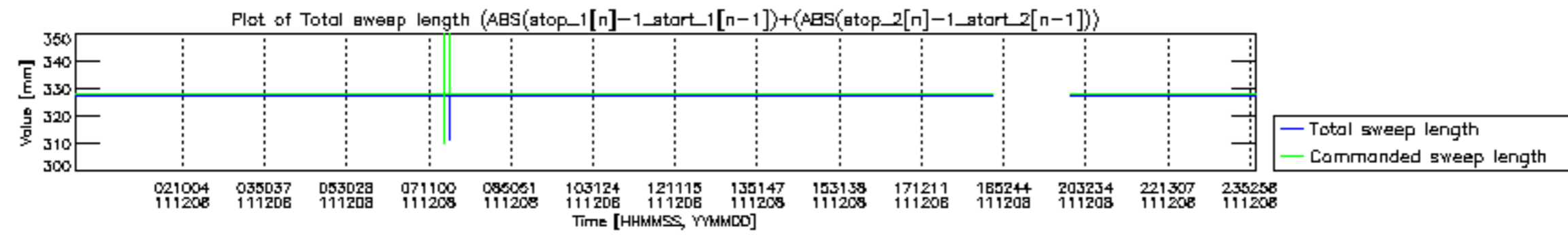


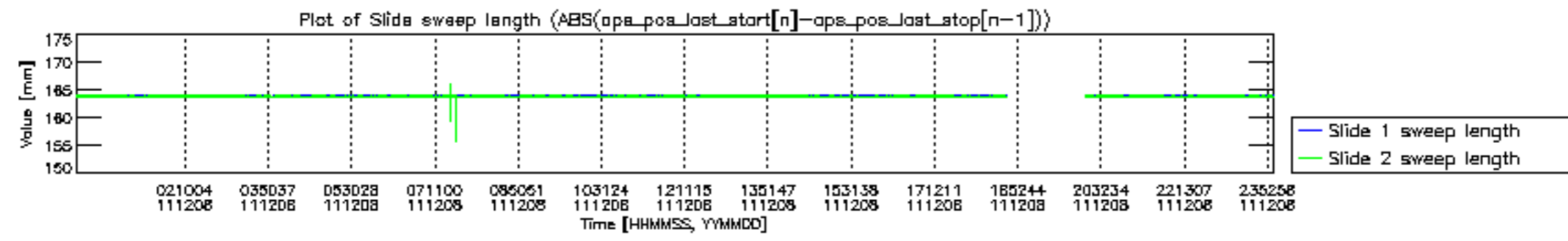


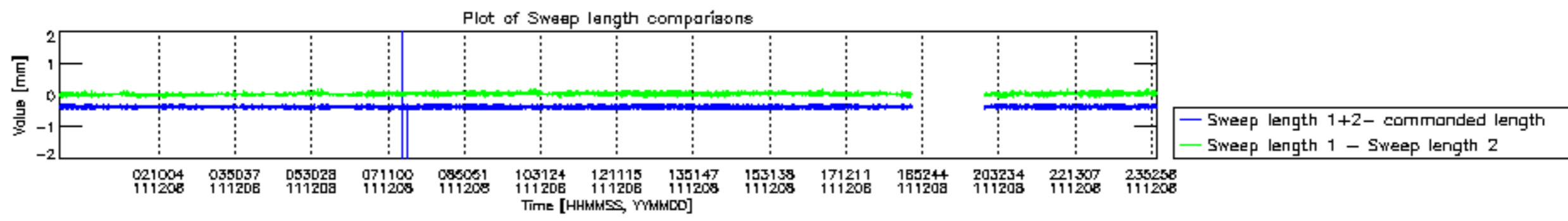


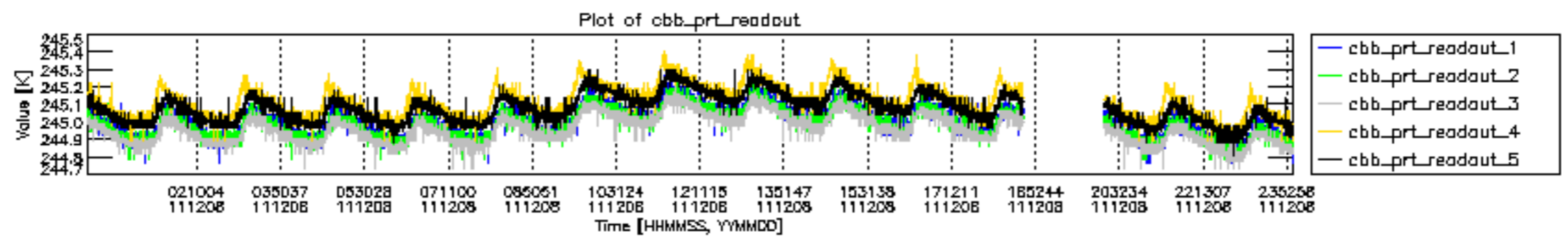




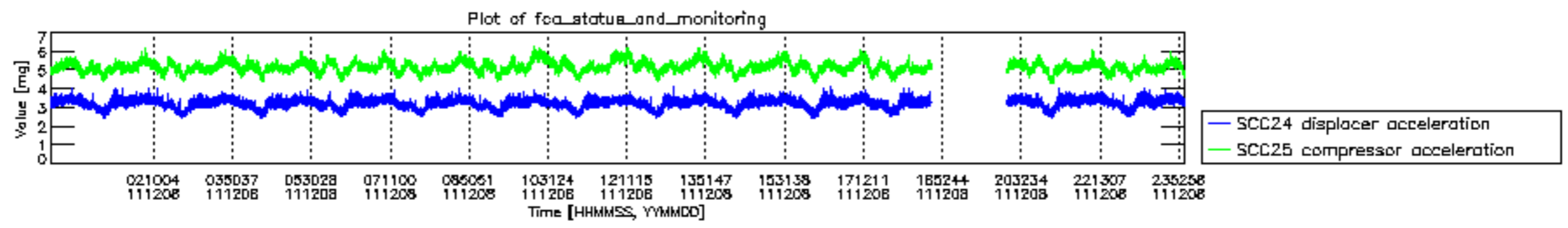












MIPNLOP\_MIPSOUPAC\_aux\_fields\_igm\_cal, channel statistics plot  
 Colour indicates value.

