

## 0. MIPAS Daily Report for level 0 products

### [0.1 General Info](#)

### [0.2 Instrument Operational Performance Parameters](#)

### [0.3 ADF monitoring](#)

## 0.1 General Info

This report contains a daily analysis on parameters extracted from MIPAS level 0 data (The MIP\_NL\_\_0P product).

### 0.1.1 Report summary

The table below shows general characteristics of the data that are included into this report.

Item	Value
Report version	v1.6 08-11-2010
Time of report generation	07DEC2011 05:28:00
Data source version	KSPT_L0/4504-N
Processing scope for products	02DEC2011 00:00:00 to 03DEC2011 00:00:00
Start time of first product within scope	02DEC2011 00:06:15
Stop time of last product within scope	03DEC2011 01:09:50
Total number of level 0 products	14
Number of level 0 products with errors	0

### 0.1.2 Product Quality Indicators per product

The following table shows a summary for each product used in this report.

#	Product name	Start time	Stop time	Prod err	ISP err sign	ISP miss sign	ISP disc sign	rs sign
0	MIP_NL__0PNPDE20111202_000615_000007153109_00145_51021_4961.N1	02DEC2011 00:06:15	02DEC2011 00:18:10	0	0	0	0	0
1	MIP_NL__0PNPDE20111202_033838_000036833109_00148_51024_4962.N1	02DEC2011 03:38:38	02DEC2011 04:40:00	0	0	0	0	0
2	MIP_NL__0PNPDE20111202_043927_000060083109_00148_51024_4964.N1	02DEC2011 04:39:27	02DEC2011 06:19:35	0	0	0	0	0
3	MIP_NL__0PNPDK20111202_072657_000061103109_00150_51026_7683.N1	02DEC2011 07:26:57	02DEC2011 09:08:47	0	0	0	0	0
4	MIP_NL__0PNPDK20111202_090709_000059813109_00151_51027_7684.N1	02DEC2011 09:07:09	02DEC2011 10:46:50	0	0	0	0	0
5	MIP_NL__0PNPDK20111202_104512_000060823109_00152_51028_7685.N1	02DEC2011 10:45:12	02DEC2011 12:26:34	0	0	0	0	0
6	MIP_NL__0PNPDK20111202_122454_000059683109_00153_51029_7686.N1	02DEC2011 12:24:54	02DEC2011 14:04:22	0	0	0	0	0
7	MIP_NL__0PNPDK20111202_140330_000059703109_00154_51030_7687.N1	02DEC2011 14:03:30	02DEC2011 15:43:01	0	0	0	0	0
8	MIP_NL__0PNPDK20111202_154215_000058353109_00155_51031_7688.N1	02DEC2011 15:42:15	02DEC2011 17:19:29	0	0	0	0	0
9	MIP_NL__0PNPDK20111202_171829_000059853109_00156_51032_7689.N1	02DEC2011 17:18:29	02DEC2011 18:58:14	0	0	0	0	0
10	MIP_NL__0PNPDK20111202_185705_000059163109_00157_51033_7690.N1	02DEC2011 18:57:05	02DEC2011 20:35:41	0	0	0	0	0
11	MIP_NL__0PNPDE20111202_203421_000044583109_00158_51034_4965.N1	02DEC2011 20:34:21	02DEC2011 21:48:39	0	0	0	0	0
12	MIP_NL__0PNPDE20111202_214743_000062023109_00158_51034_4966.N1	02DEC2011 21:47:43	02DEC2011 23:31:05	0	0	0	0	0
13	MIP_NL__0PNPDE20111202_232958_000059913109_00159_51035_4967.N1	02DEC2011 23:29:58	03DEC2011 01:09:50	0	0	0	0	0

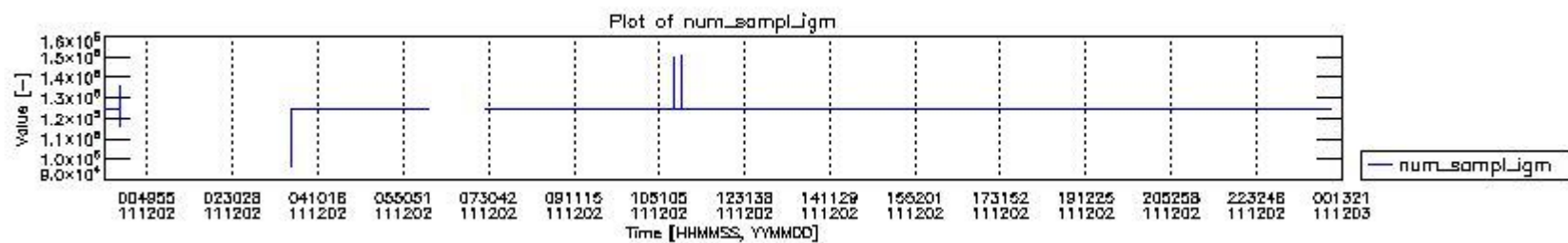
## 0.2 Instrument Operational Performance Parameters

The following plots give an overview of various instrument parameters for this day. The instrument parameters are part of the auxiliary data field within the source packets of the MIP\_NL\_\_0P product. The auxiliary data is normally included twice per interferogram. Note that only the first packet is currently included in monitoring.

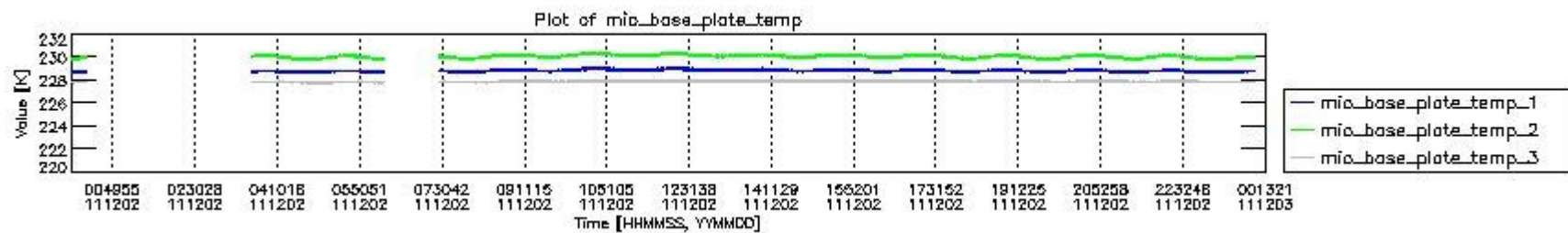
The following table shows the counts of various interferogram number of samples

Number of igm samples	Count [#]	Count [%]
96313	1	0.0029448142
115859	1	0.0029448142
123398	1	0.0029448142
124099	1	0.0029448142

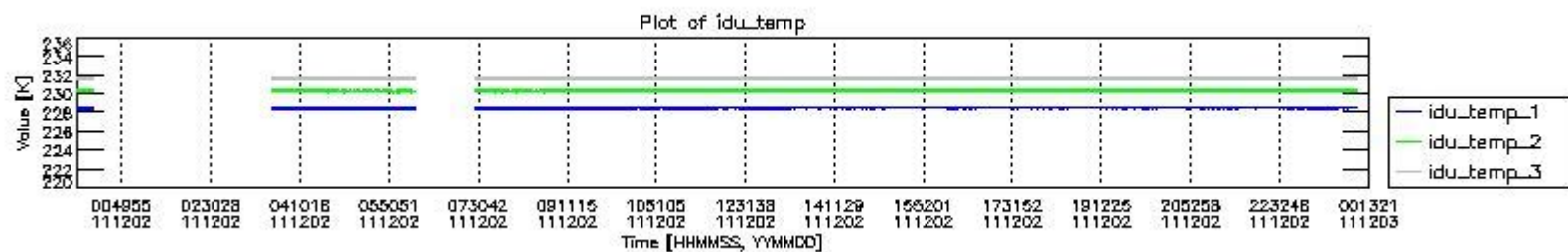
124774	1	0.0029448142
124800	31540	92.879439
124803	2406	7.0852229
127050	1	0.0029448142
127828	1	0.0029448142
135991	1	0.0029448142
147440	1	0.0029448142
147960	1	0.0029448142
149948	1	0.0029448142
150988	1	0.0029448142



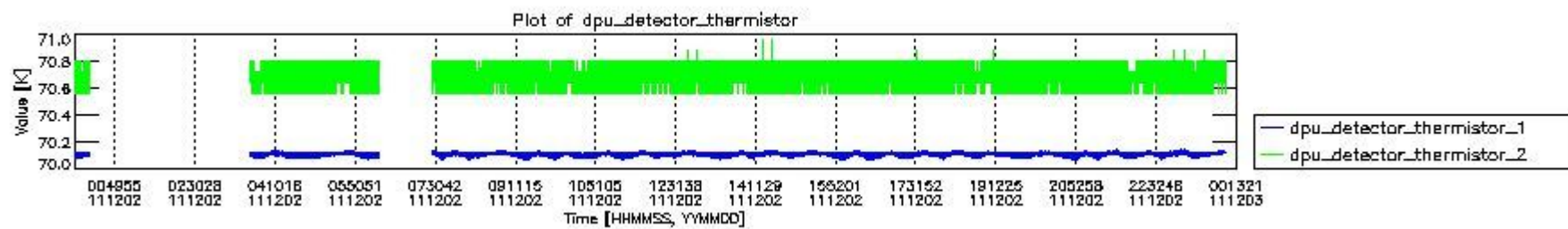
mipas\_daily\_report\_level0\_KSPT\_L0\_4504\_N\_20111202\_0.PNG



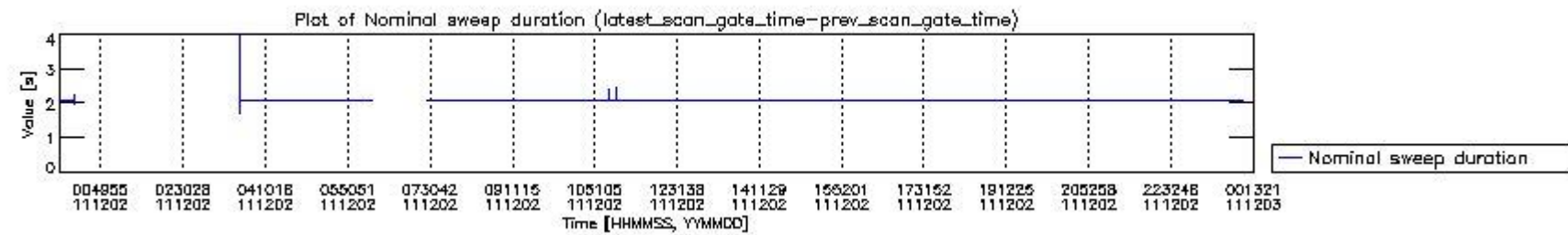
mipas\_daily\_report\_level0\_KSPT\_L0\_4504\_N\_20111202\_1.PNG



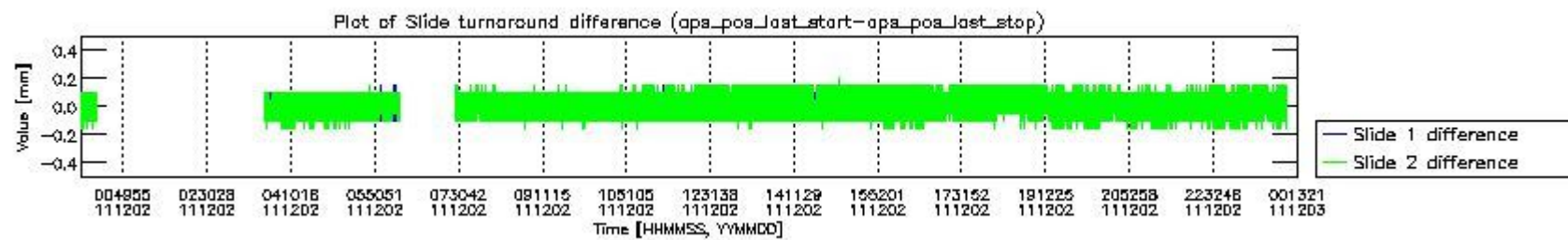
mipas\_daily\_report\_level0\_KSPT\_L0\_4504\_N\_20111202\_2.PNG



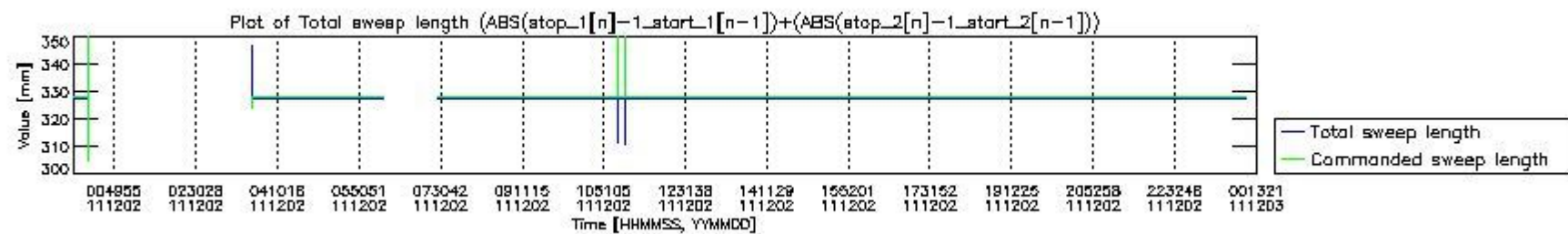
mipas\_daily\_report\_level0\_KSPT\_L0\_4504\_N\_20111202\_3.PNG



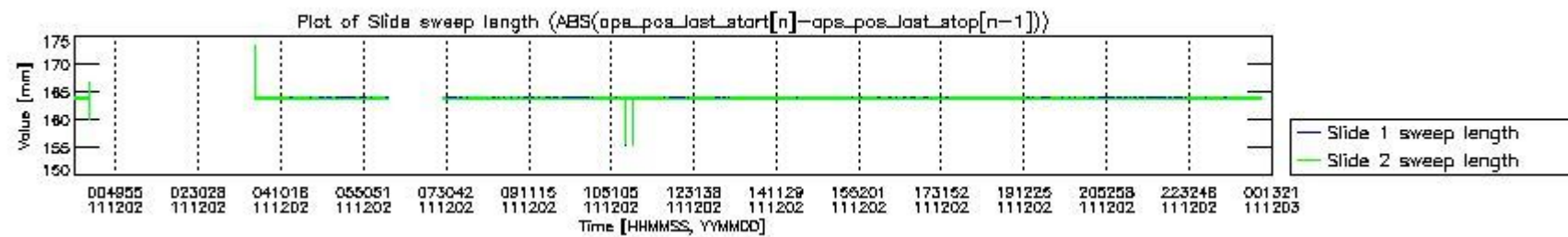
mipas\_daily\_report\_level0\_KSPT\_L0\_4504\_N\_20111202\_4.PNG



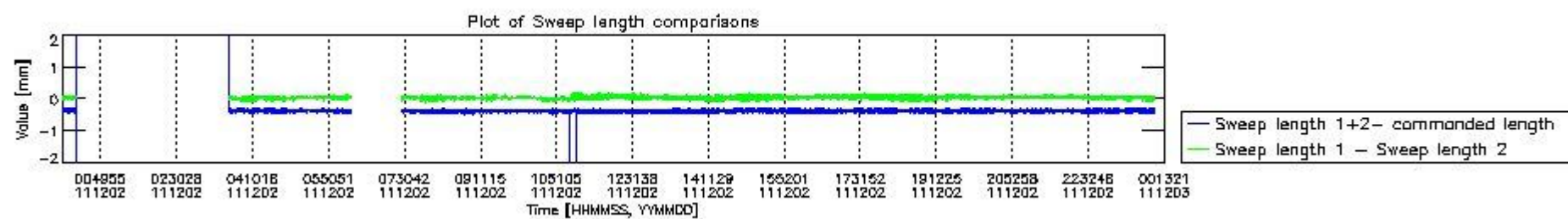
mipas\_daily\_report\_level0\_KSPT\_L0\_4504\_N\_20111202\_5.PNG



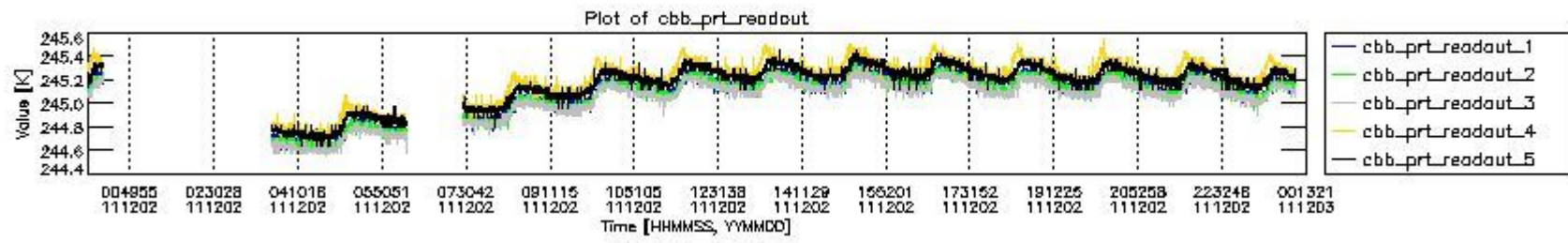
mipas\_daily\_report\_level0\_KSPT\_L0\_4504\_N\_20111202\_6.PNG



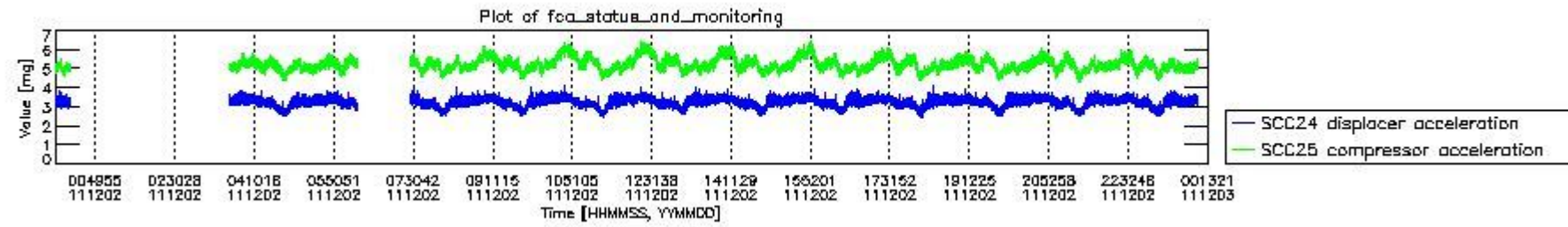
mipas\_daily\_report\_level0\_KSPT\_L0\_4504\_N\_20111202\_7.PNG



mipas\_daily\_report\_level0\_KSPT\_L0\_4504\_N\_20111202\_8.PNG



mipas\_daily\_report\_level0\_KSPT\_L0\_4504\_N\_20111202\_9.PNG



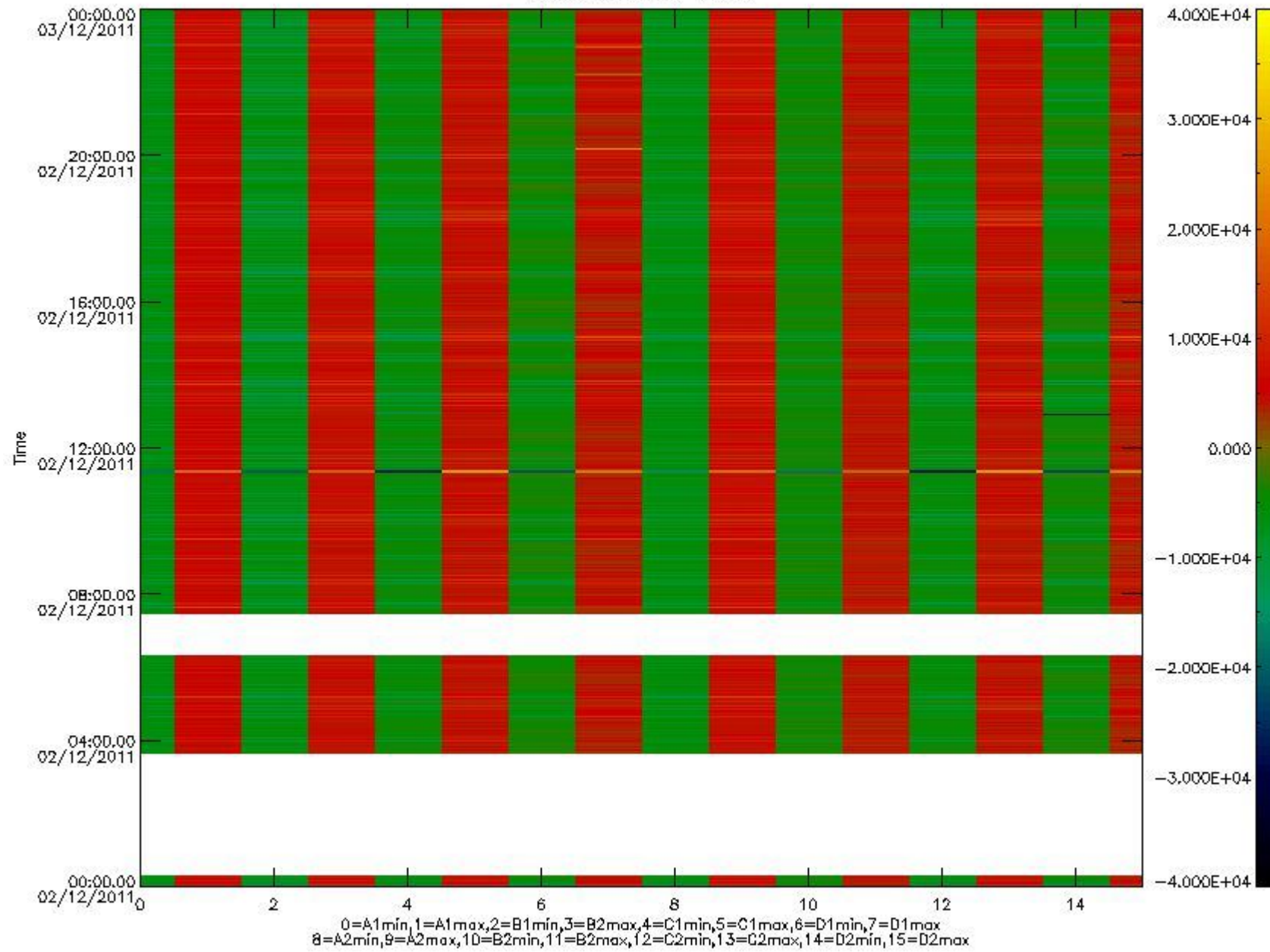
mipas\_daily\_report\_level0\_KSPT\_L0\_4504\_N\_20111202\_10.PNG

The following table shows channel statistics for all channels for this day.

Channel	Min	Max	ADC
A1	-32768	32767	16bit
B1	-32768	32767	16bit
C1	-25384	25183	16bit
D1	-32768	32767	16bit
A2	-32768	28258	16bit
B2	-32768	32767	16bit
C2	-26422	25964	16bit
D2	-32768	32767	16bit



MIPNLOP\_MIPSOUPAC\_aux\_fields\_igm\_cal, channel statistics plot  
Colour indicates value.



mipas\_daily\_report\_level0\_KSPT\_L0\_4504\_N\_20111202\_11.PNG

### 0.3 ADF monitoring

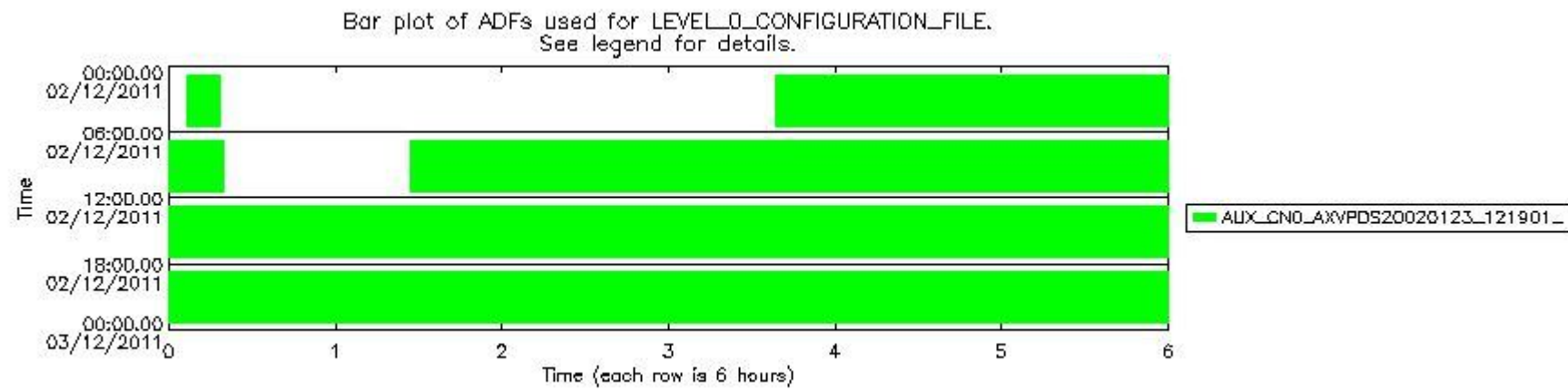
The use of ADFs is shown in two ways:

1. By means of two tables that can be used to find the ADF used for a specific product.
2. By means of plots that show changes in ADF using colours.

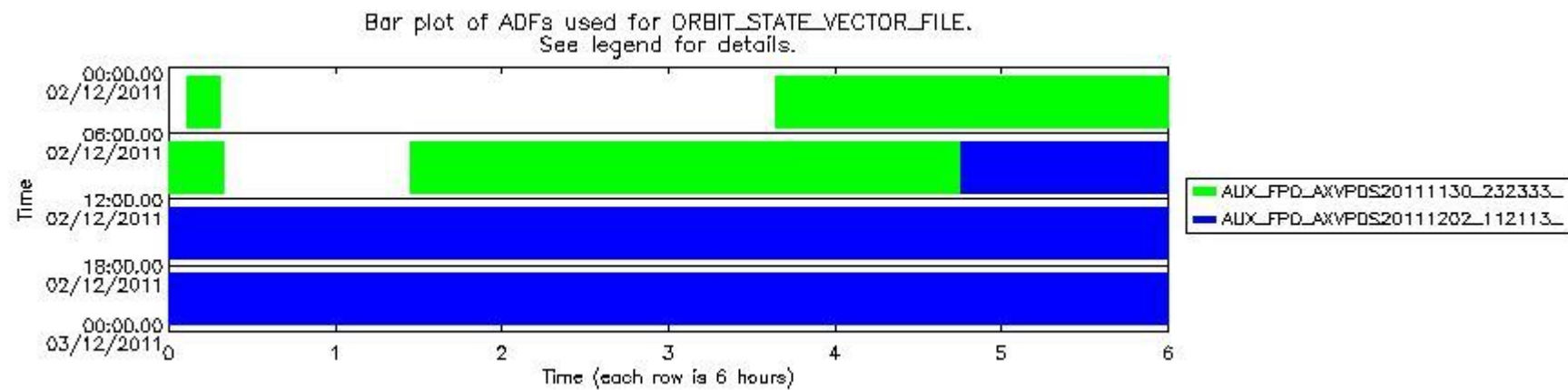
Number	ADF
0	AUX_CN0_AXVPDS20020123_121901_20020101_000000_20200101_000000
1	AUX_FPO_AXVPDS20111130_232333_20111130_195359_20111210_202726
2	AUX_FPO_AXVPDS20111202_112113_20111201_191714_20111211_213056

Number	Product name	#CN0	#FPO
--------	--------------	------	------

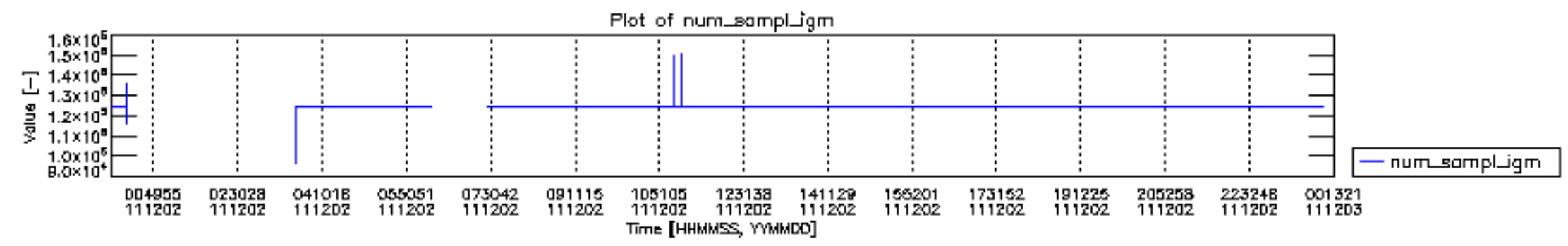
0	MIP_NL__0PNPDE20111202_000615_000007153109_00145_51021_4961.N1	0	1
1	MIP_NL__0PNPDE20111202_033838_000036833109_00148_51024_4962.N1	0	1
2	MIP_NL__0PNPDE20111202_043927_000060083109_00148_51024_4964.N1	0	1
3	MIP_NL__0PNPDK20111202_072657_000061103109_00150_51026_7683.N1	0	1
4	MIP_NL__0PNPDK20111202_090709_000059813109_00151_51027_7684.N1	0	1
5	MIP_NL__0PNPDK20111202_104512_000060823109_00152_51028_7685.N1	0	2
6	MIP_NL__0PNPDK20111202_122454_000059683109_00153_51029_7686.N1	0	2
7	MIP_NL__0PNPDK20111202_140330_000059703109_00154_51030_7687.N1	0	2
8	MIP_NL__0PNPDK20111202_154215_000058353109_00155_51031_7688.N1	0	2
9	MIP_NL__0PNPDK20111202_171829_000059853109_00156_51032_7689.N1	0	2
10	MIP_NL__0PNPDK20111202_185705_000059163109_00157_51033_7690.N1	0	2
11	MIP_NL__0PNPDE20111202_203421_000044583109_00158_51034_4965.N1	0	2
12	MIP_NL__0PNPDE20111202_214743_000062023109_00158_51034_4966.N1	0	2
13	MIP_NL__0PNPDE20111202_232958_000059913109_00159_51035_4967.N1	0	2

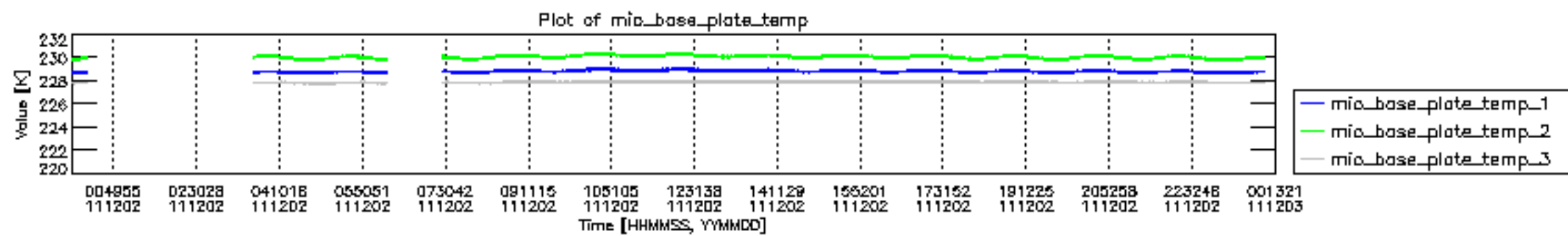


mipas\_daily\_report\_level0\_KSPT\_L0\_4504\_N\_20111202\_12.PNG

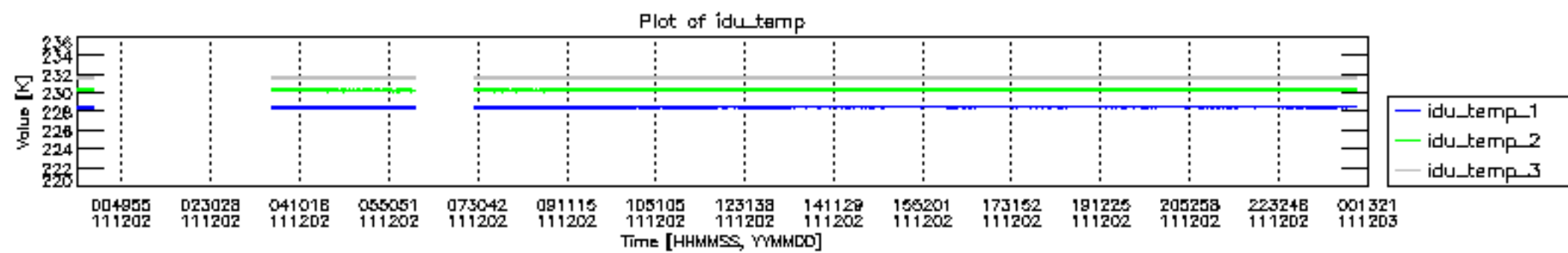


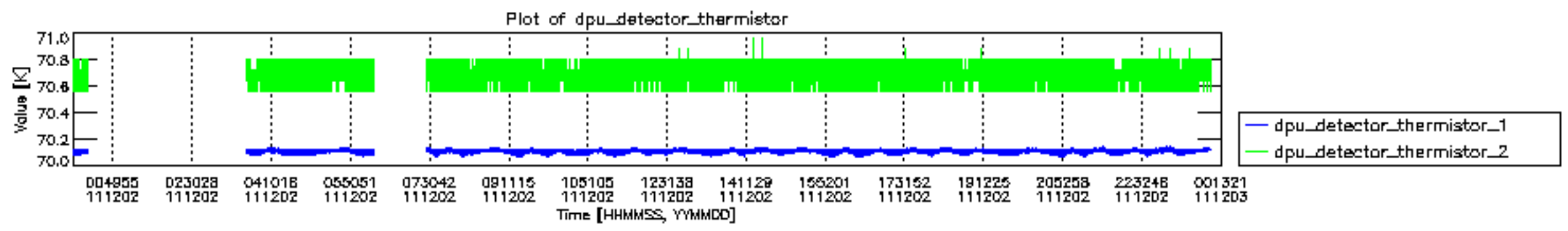
mipas\_daily\_report\_level0\_KSPT\_L0\_4504\_N\_20111202\_13.PNG

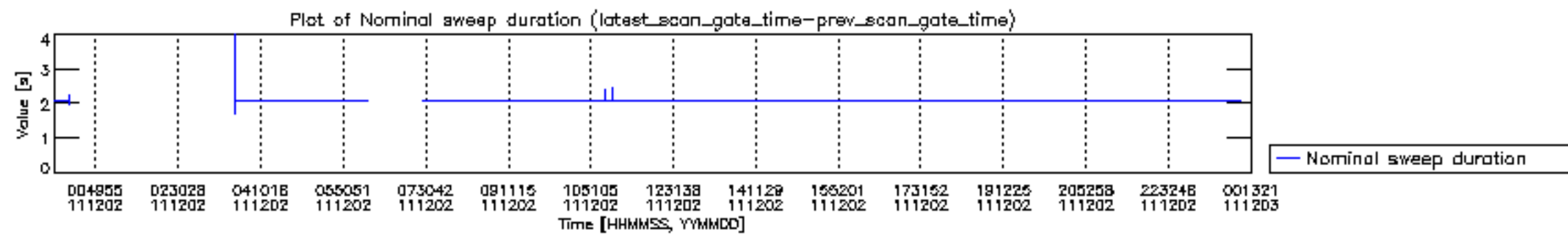


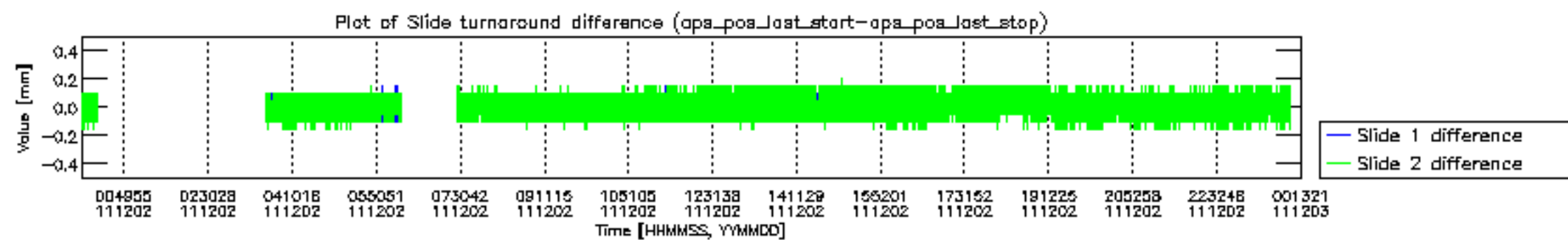


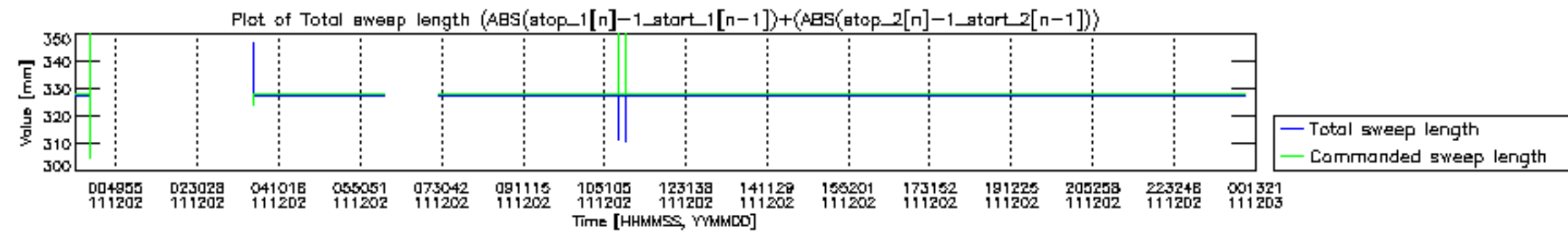




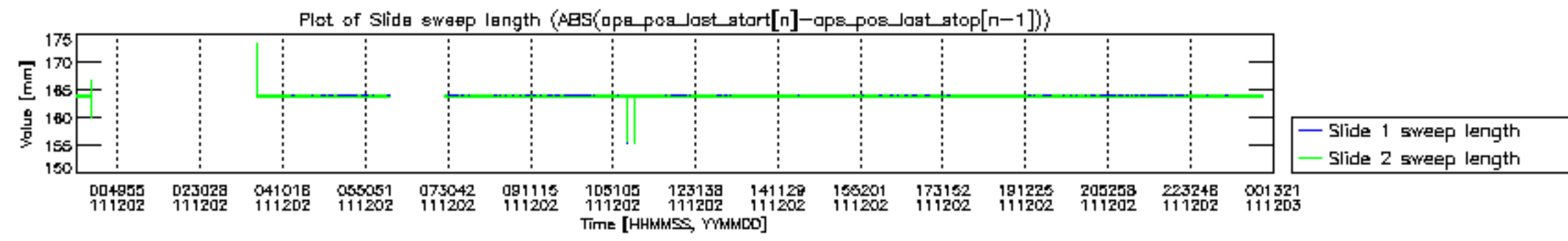


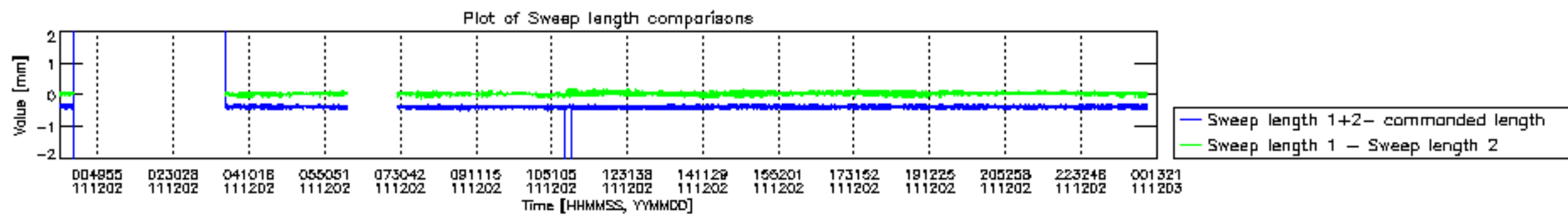


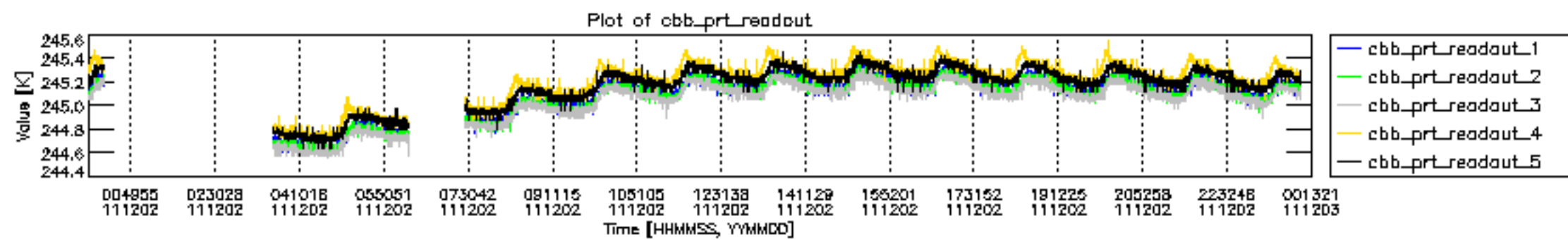


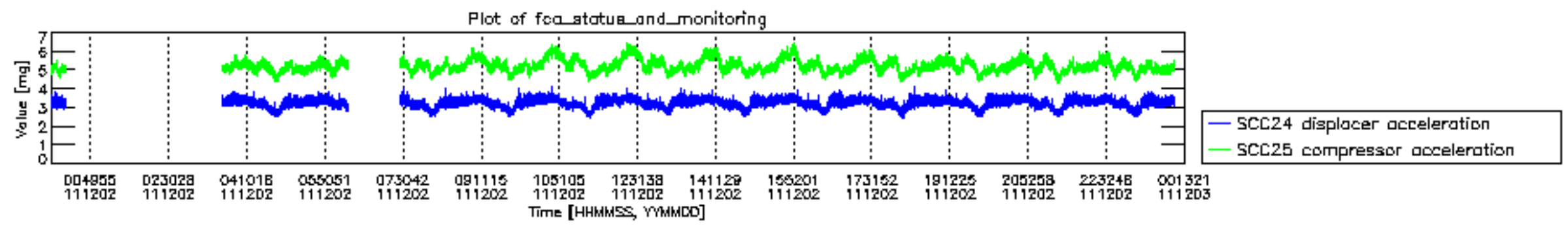












MIPNLOP\_MIPSOUPAC\_aux\_fields\_igm\_cal, channel statistics plot  
 Colour indicates value.

