

0. MIPAS Daily Report for level 0 products

[0.1 General Info](#)

[0.2 Instrument Operational Performance Parameters](#)

[0.3 ADF monitoring](#)

0.1 General Info

This report contains a daily analysis on parameters extracted from MIPAS level 0 data (The MIP_NL__0P product).

0.1.1 Report summary

The table below shows general characteristics of the data that are included into this report.

Item	Value
Report version	v1.6 08-11-2010
Time of report generation	01DEC2011 05:24:23
Data source version	KSPT_L0/4504-N
Processing scope for products	26NOV2011 00:00:00 to 27NOV2011 00:00:00
Start time of first product within scope	26NOV2011 00:25:34
Stop time of last product within scope	27NOV2011 01:29:53
Total number of level 0 products	16
Number of level 0 products with errors	2

0.1.2 Product Quality Indicators per product

The following table shows a summary for each product used in this report.

#	Product name	Start time	Stop time	Prod err	ISP err sign	ISP miss sign	ISP disc sign	rs sign
0	MIP_NL__0PNPDE20111126_002534_000059113109_00059_50935_4916.N1	26NOV2011 00:25:34	26NOV2011 02:04:05	0	0	0	0	0
1	MIP_NL__0PNPDE20111126_004547_000046983109_00060_50936_4921.N1	26NOV2011 00:45:47	26NOV2011 02:04:05	0	0	0	0	0
2	MIP_NL__0PNPDE20111126_020307_000044643109_00060_50936_4917.N1	26NOV2011 02:03:07	26NOV2011 03:17:31	0	0	0	0	0
3	MIP_NL__0PNPDE20111126_031657_000062133109_00061_50937_4918.N1	26NOV2011 03:16:57	26NOV2011 05:00:30	0	0	0	0	0
4	MIP_NL__0PNPDE20111126_045957_000060423109_00062_50938_4919.N1	26NOV2011 04:59:57	26NOV2011 06:40:38	0	0	0	0	0
5	MIP_NL__0PNPDK20111126_064005_000040093109_00063_50939_7630.N1	26NOV2011 06:40:05	26NOV2011 07:46:54	0	0	0	0	0
6	MIP_NL__0PNPDK20111126_074555_000062273109_00064_50940_7631.N1	26NOV2011 07:45:55	26NOV2011 09:29:43	1	1	0	0	0
7	MIP_NL__0PNPDK20111126_092804_000060113109_00065_50941_7632.N1	26NOV2011 09:28:04	26NOV2011 11:08:16	0	0	0	0	0
8	MIP_NL__0PNPDK20111126_110639_000060483109_00066_50942_7633.N1	26NOV2011 11:06:39	26NOV2011 12:47:27	0	0	0	0	0
9	MIP_NL__0PNPDK20111126_124557_000059063109_00067_50943_7634.N1	26NOV2011 12:45:57	26NOV2011 14:24:23	0	0	0	0	0
10	MIP_NL__0PNPDK20111126_142306_000059703109_00068_50944_7635.N1	26NOV2011 14:23:06	26NOV2011 16:02:36	0	0	0	0	0
11	MIP_NL__0PNPDK20111126_160152_000058303109_00069_50945_7636.N1	26NOV2011 16:01:52	26NOV2011 17:39:03	0	0	0	0	0
12	MIP_NL__0PNPDK20111126_173802_000059353109_00070_50946_7637.N1	26NOV2011 17:38:02	26NOV2011 19:16:57	0	0	0	0	0
13	MIP_NL__0PNPDK20111126_191452_000061153109_00071_50947_7638.N1	26NOV2011 19:14:52	26NOV2011 20:56:46	0	0	0	0	0
14	MIP_NL__0PNPDE20111126_220853_000060563109_00072_50948_4923.N1	26NOV2011 22:08:53	26NOV2011 23:49:49	1	1	0	0	0
15	MIP_NL__0PNPDE20111126_234846_000060673109_00073_50949_4924.N1	26NOV2011 23:48:46	27NOV2011 01:29:53	0	0	0	0	0

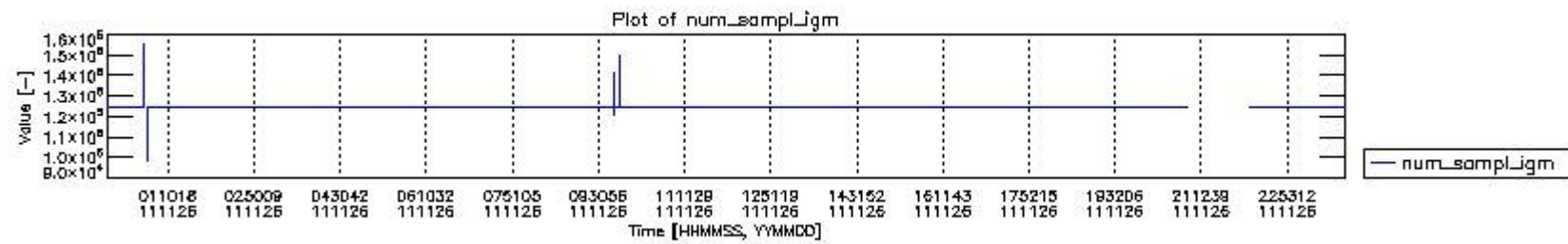
0.2 Instrument Operational Performance Parameters

The following plots give an overview of various instrument parameters for this day. The instrument parameters are part of the auxiliary data field within the source packets of the MIP_NL__0P product. The auxiliary data is normally included twice per interferogram. Note that only the first packet is currently included in monitoring.

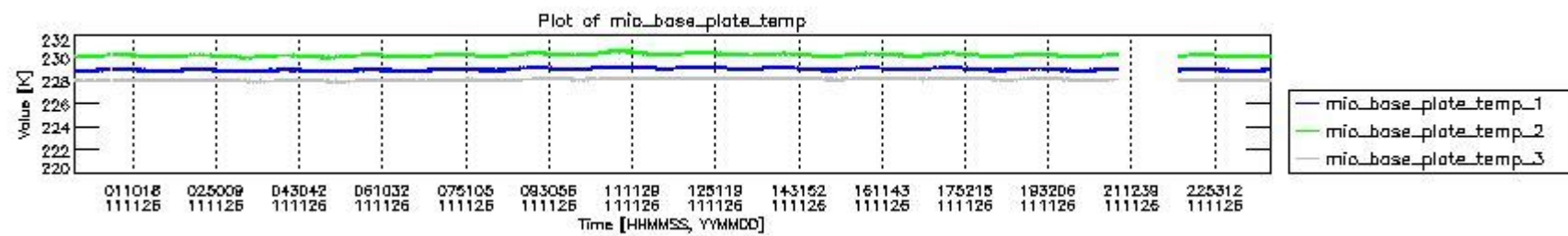
The following table shows the counts of various interferogram number of samples

Number of igm samples	Count [#]	Count [%]
98624	1	0.0025336340
120766	1	0.0025336340

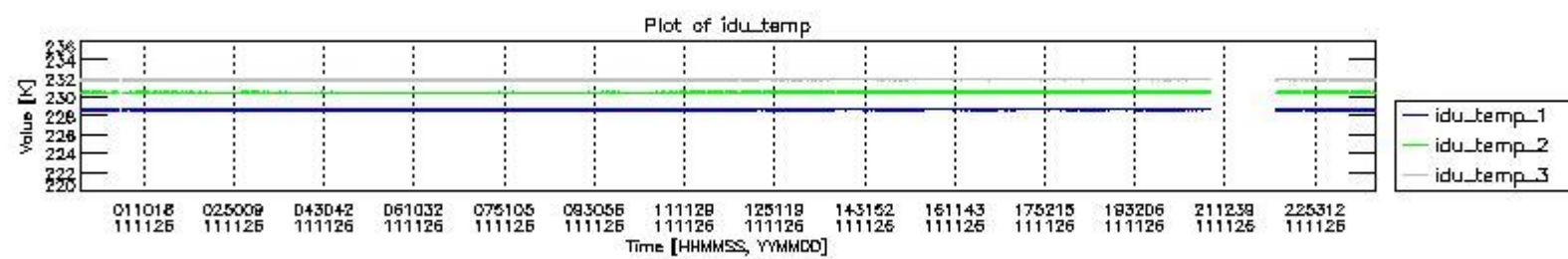
122952	1	0.0025336340
123876	1	0.0025336340
124800	36666	92.898224
124803	2791	7.0713725
127159	1	0.0025336340
129984	1	0.0025336340
136864	1	0.0025336340
140898	1	0.0025336340
147291	1	0.0025336340
149650	1	0.0025336340
150116	1	0.0025336340
155300	1	0.0025336340



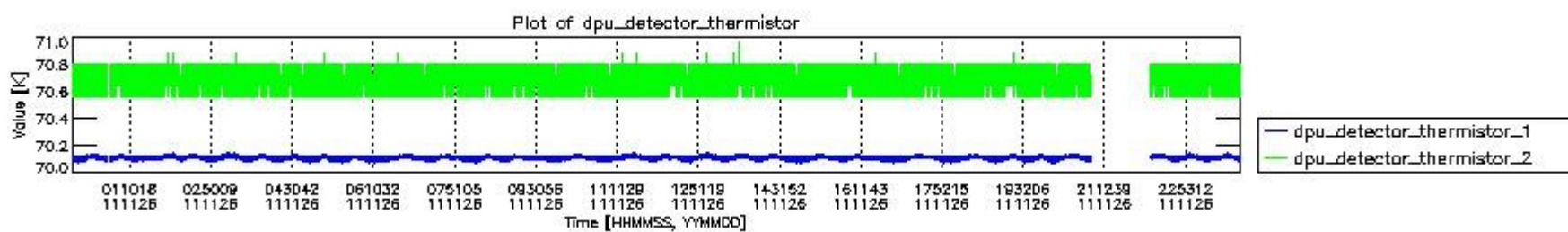
mipas_daily_report_level0_KSPT_L0_4504_N_20111126_0.PNG



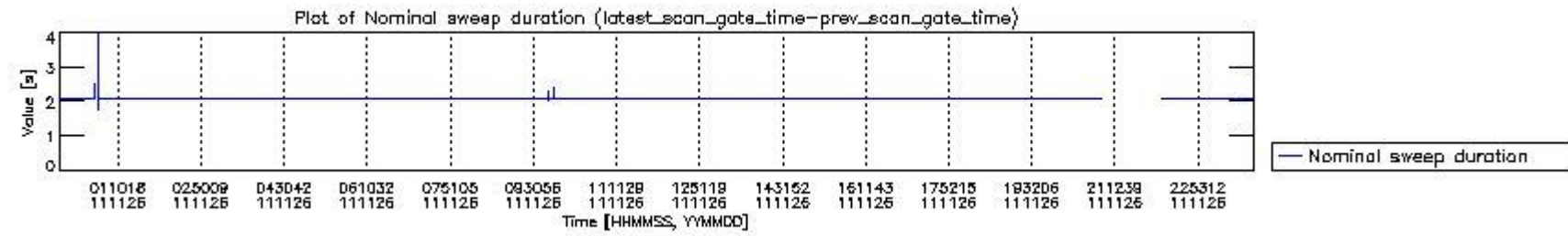
mipas_daily_report_level0_KSPT_L0_4504_N_20111126_1.PNG



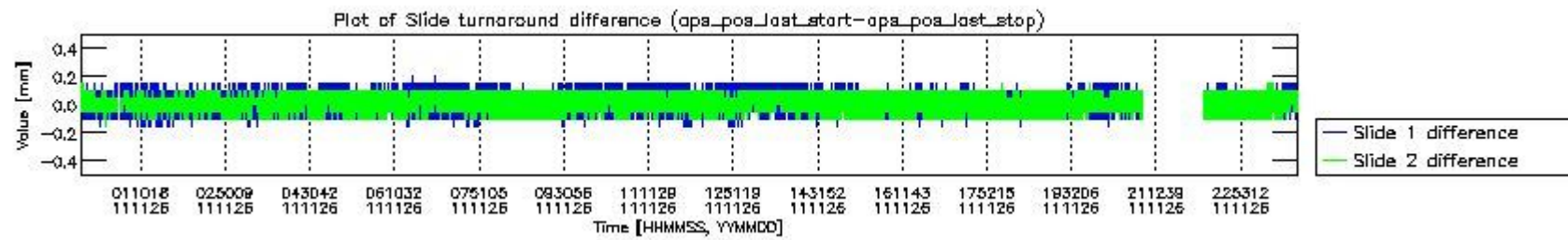
mipas_daily_report_level0_KSPT_L0_4504_N_20111126_2.PNG



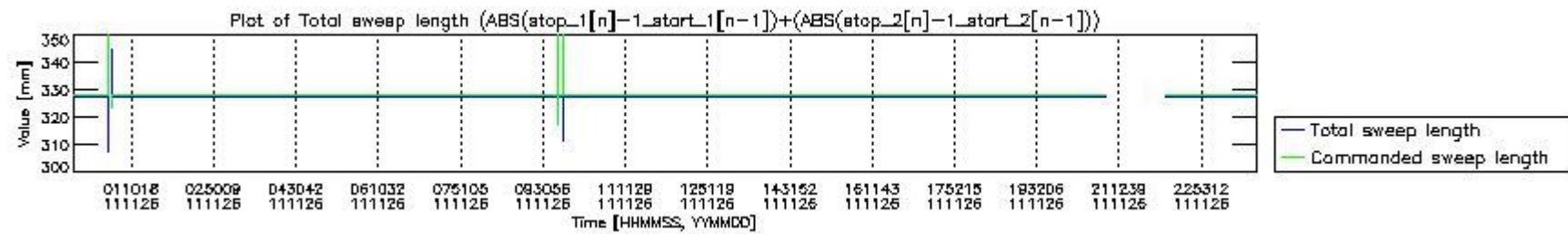
mipas_daily_report_level0_KSPT_L0_4504_N_20111126_3.PNG



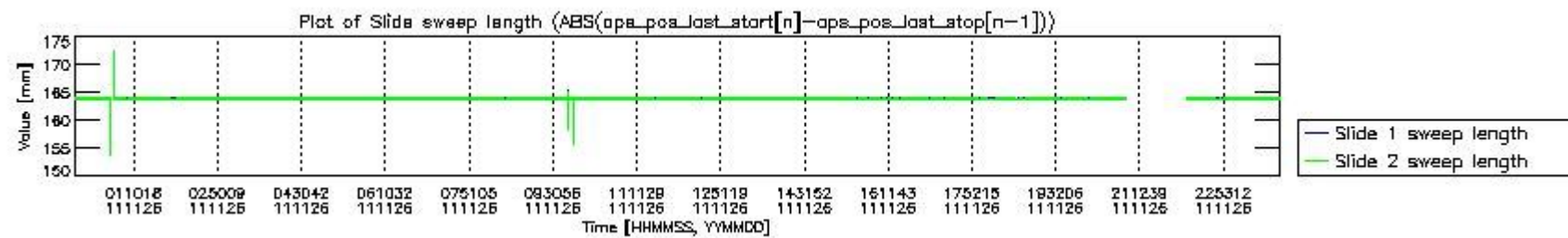
mipas_daily_report_level0_KSPT_L0_4504_N_20111126_4.PNG



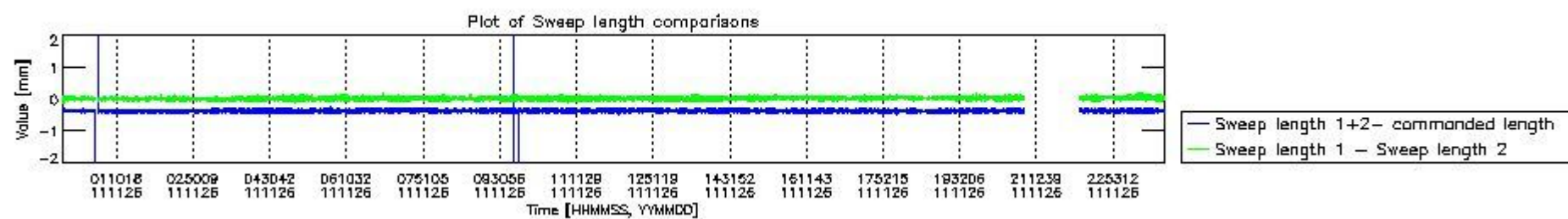
mipas_daily_report_level0_KSPT_L0_4504_N_20111126_5.PNG



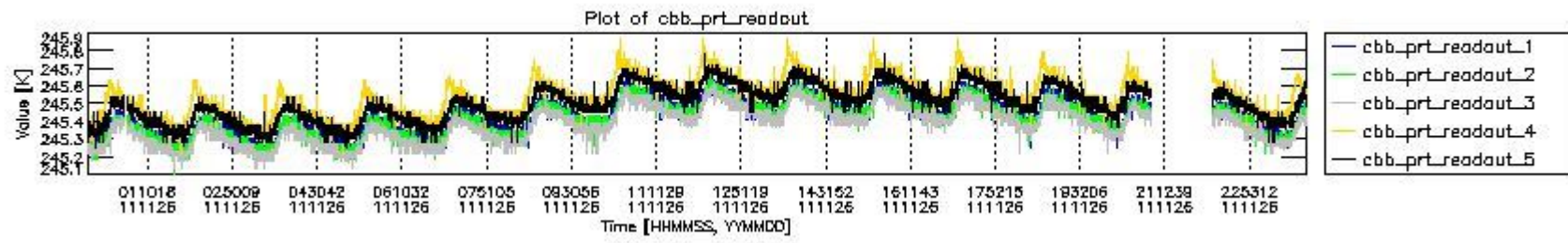
mipas_daily_report_level0_KSPT_L0_4504_N_20111126_6.PNG



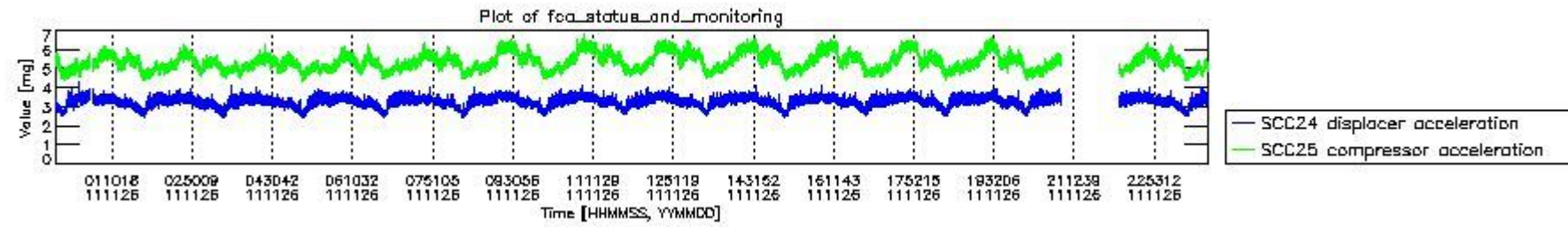
mipas_daily_report_level0_KSPT_L0_4504_N_20111126_7.PNG



mipas_daily_report_level0_KSPT_L0_4504_N_20111126_8.PNG



mipas_daily_report_level0_KSPT_L0_4504_N_20111126_9.PNG



mipas_daily_report_level0_KSPT_L0_4504_N_20111126_10.PNG

The following table shows channel statistics for all channels for this day.

Channel	Min	Max	ADC
A1	-18426	19535	16bit
B1	-20942	17943	16bit
C1	-25650	25601	16bit
D1	-32768	32767	16bit
A2	-15962	19745	16bit
B2	-18845	18456	16bit
C2	-26694	26300	16bit
D2	-32768	32767	16bit

MIPNLOP_MIPSOUPAC_aux_fields_igm_cal, channel statistics plot
Colour indicates value.



mipas_daily_report_level0_KSPT_L0_4504_N_20111126_11.PNG

0.3 ADF monitoring

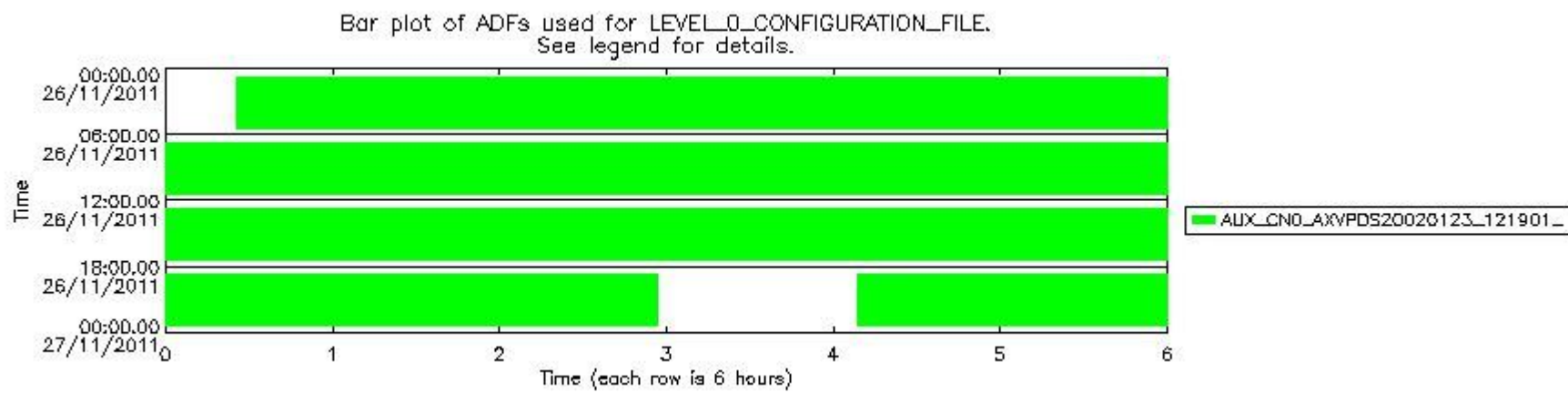
The use of ADFs is shown in two ways:

1. By means of two tables that can be used to find the ADF used for a specific product.
2. By means of plots that show changes in ADF using colours.

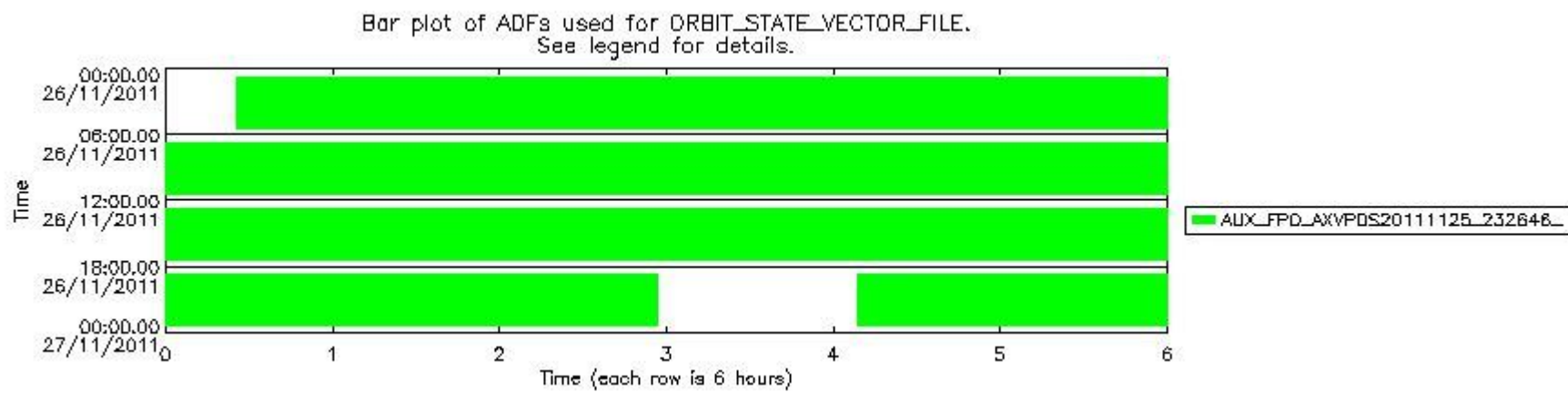
Number	ADF
0	AUX_CN0_AXVPDS20020123_121901_20020101_000000_20200101_000000
1	AUX_FPO_AXVPDS20111125_232646_20111125_193715_20111205_201043

Number	Product name	#CN0	#FPO
0	MIP_NL_0PNPDE20111126_002534_000059113109_00059_50935_4916.N1	0	1

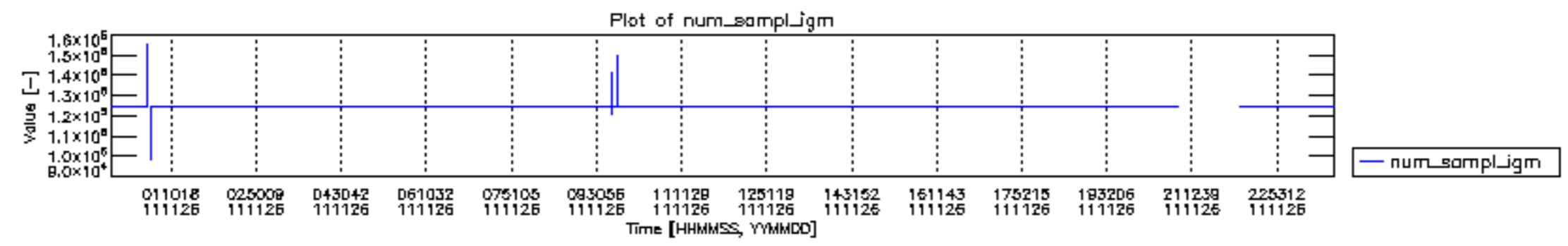
1	MIP_NL__0PNPDE20111126_004547_000046983109_00060_50936_4921.N1	0	1
2	MIP_NL__0PNPDE20111126_020307_000044643109_00060_50936_4917.N1	0	1
3	MIP_NL__0PNPDE20111126_031657_000062133109_00061_50937_4918.N1	0	1
4	MIP_NL__0PNPDE20111126_045957_000060423109_00062_50938_4919.N1	0	1
5	MIP_NL__0PNPDK20111126_064005_000040093109_00063_50939_7630.N1	0	1
6	MIP_NL__0PNPDK20111126_074555_000062273109_00064_50940_7631.N1	0	1
7	MIP_NL__0PNPDK20111126_092804_000060113109_00065_50941_7632.N1	0	1
8	MIP_NL__0PNPDK20111126_110639_000060483109_00066_50942_7633.N1	0	1
9	MIP_NL__0PNPDK20111126_124557_000059063109_00067_50943_7634.N1	0	1
10	MIP_NL__0PNPDK20111126_142306_000059703109_00068_50944_7635.N1	0	1
11	MIP_NL__0PNPDK20111126_160152_000058303109_00069_50945_7636.N1	0	1
12	MIP_NL__0PNPDK20111126_173802_000059353109_00070_50946_7637.N1	0	1
13	MIP_NL__0PNPDK20111126_191452_000061153109_00071_50947_7638.N1	0	1
14	MIP_NL__0PNPDE20111126_220853_000060563109_00072_50948_4923.N1	0	1
15	MIP_NL__0PNPDE20111126_234846_000060673109_00073_50949_4924.N1	0	1

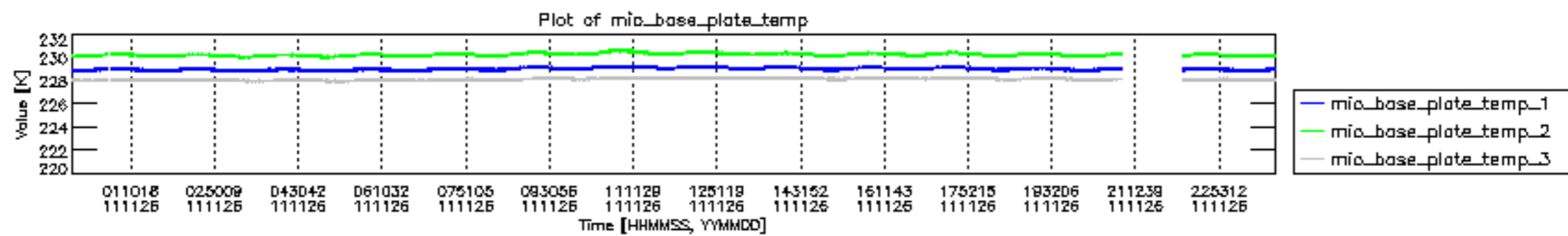


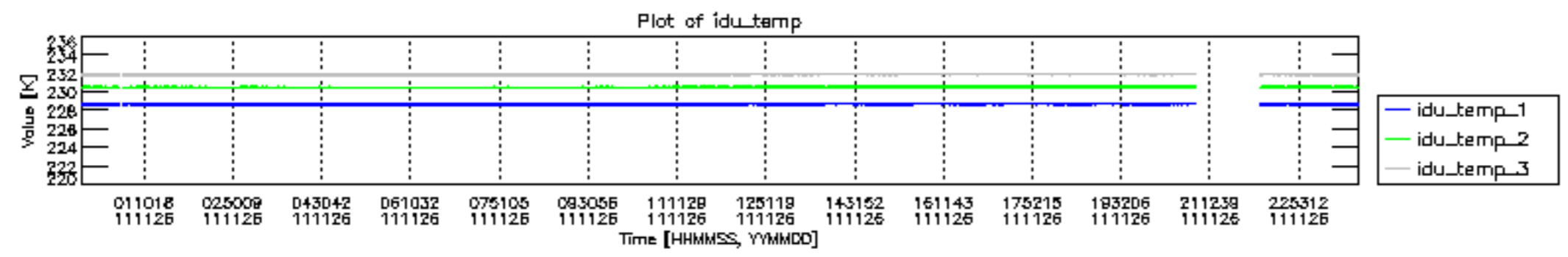
mipas_daily_report_level0_KSPT_L0_4504_N_20111126_12.PNG

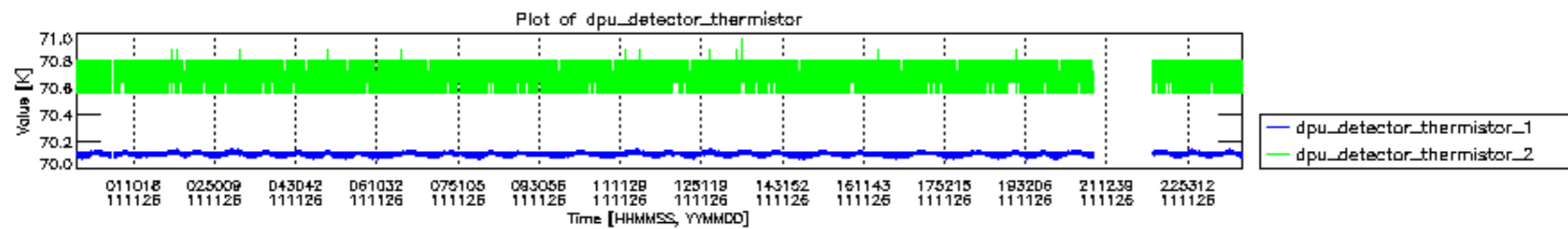


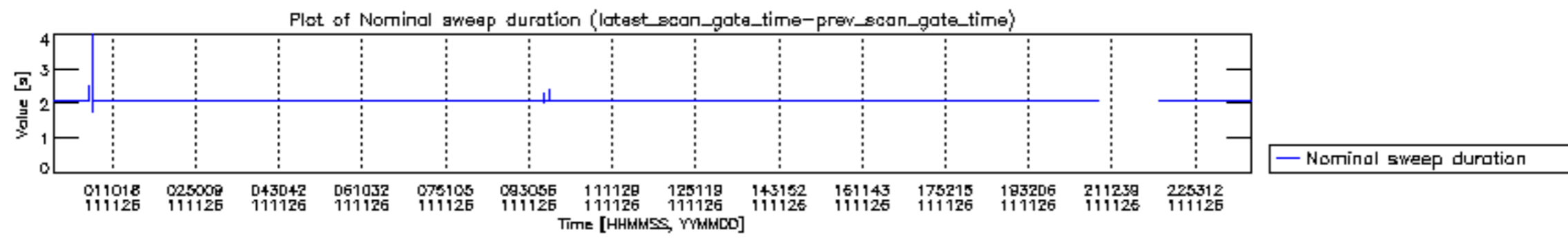
mipas_daily_report_level0_KSPT_L0_4504_N_20111126_13.PNG

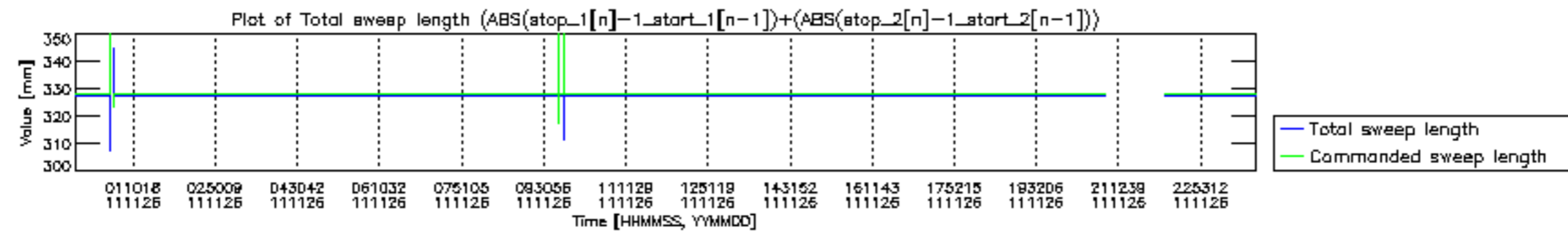


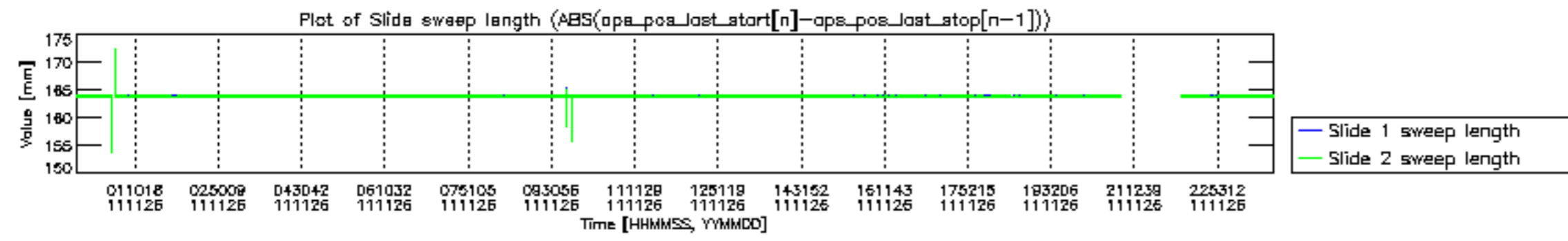


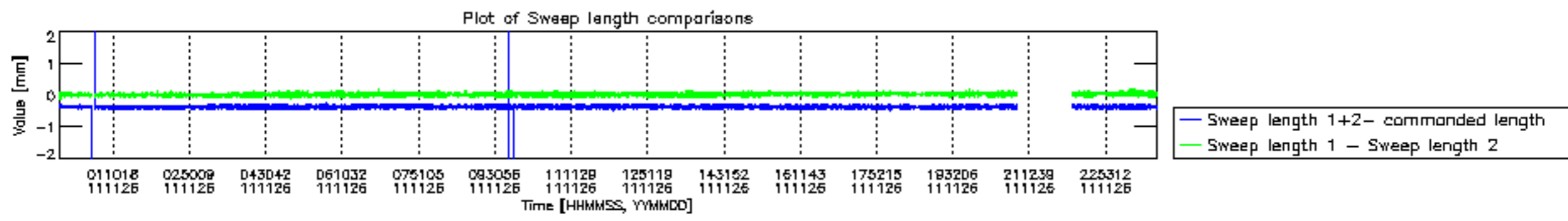


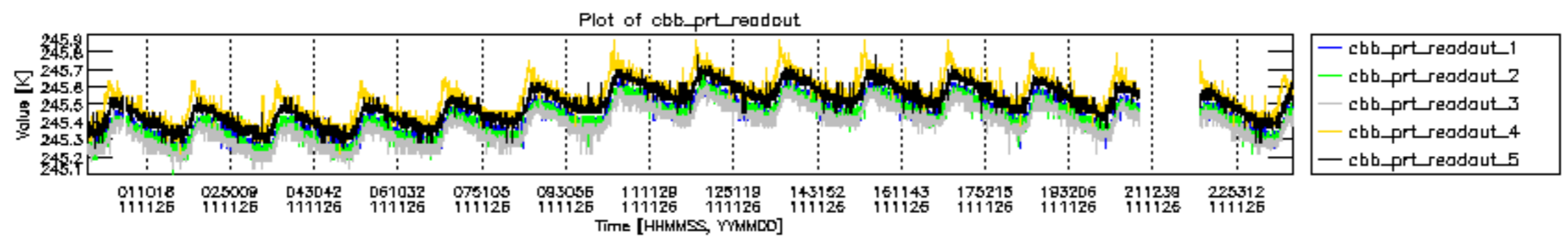


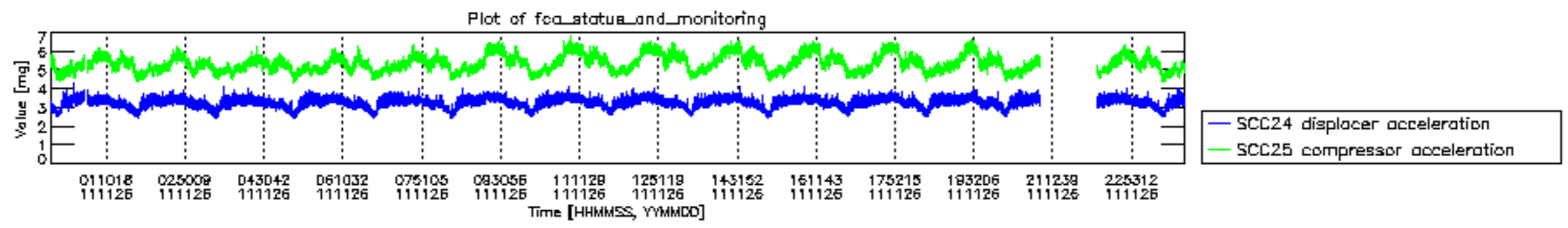












MIPNLOP_MIPSOUPAC_aux_fields_igm_cal, channel statistics plot
 Colour indicates value.

