

## 0. MIPAS Daily Report for level 0 products

### [0.1 General Info](#)

### [0.2 Instrument Operational Performance Parameters](#)

### [0.3 ADF monitoring](#)

## 0.1 General Info

This report contains a daily analysis on parameters extracted from MIPAS level 0 data (The MIP\_NL\_\_0P product).

### 0.1.1 Report summary

The table below shows general characteristics of the data that are included into this report.

Item	Value
Report version	v1.6 08-11-2010
Time of report generation	26NOV2011 05:24:48
Data source version	KSPT_L0/4504-N
Processing scope for products	21NOV2011 00:00:00 to 22NOV2011 00:00:00
Start time of first product within scope	21NOV2011 00:08:39
Stop time of last product within scope	22NOV2011 01:13:03
Total number of level 0 products	18
Number of level 0 products with errors	1

### 0.1.2 Product Quality Indicators per product

The following table shows a summary for each product used in this report.

#	Product name	Start time	Stop time	Prod err	ISP err sign	ISP miss sign	ISP disc sign	rs sign
0	MIP_NL__0PNPDE20111121_000839_000060373108_00418_50863_4880.N1	21NOV2011 00:08:39	21NOV2011 01:49:16	0	0	0	0	0
1	MIP_NL__0PNPDE20111121_002901_000048153108_00419_50864_0056.N1	21NOV2011 00:29:01	21NOV2011 01:49:16	0	0	0	0	0
2	MIP_NL__0PNPDE20111121_014817_000043833108_00419_50864_4881.N1	21NOV2011 01:48:17	21NOV2011 03:01:20	0	0	0	0	0
3	MIP_NL__0PNPDE20111121_030047_000061653108_00420_50865_4882.N1	21NOV2011 03:00:47	21NOV2011 04:43:31	0	0	0	0	0
4	MIP_NL__0PNPDE20111121_044258_000060463108_00421_50866_4883.N1	21NOV2011 04:42:58	21NOV2011 06:23:44	0	0	0	0	0
5	MIP_NL__0PNPDK20111121_062308_000040303108_00422_50867_7584.N1	21NOV2011 06:23:08	21NOV2011 07:30:18	0	0	0	0	0
6	MIP_NL__0PNPDK20111121_072919_000061713108_00423_50868_7585.N1	21NOV2011 07:29:19	21NOV2011 09:12:11	1	1	0	0	0
7	MIP_NL__0PNPDK20111121_091034_000060093108_00424_50869_7586.N1	21NOV2011 09:10:34	21NOV2011 10:50:43	0	0	0	0	0
8	MIP_NL__0PNPDK20111121_104905_000060623108_00425_50870_7587.N1	21NOV2011 10:49:05	21NOV2011 12:30:08	0	0	0	0	0
9	MIP_NL__0PNPDK20111121_122827_000010513108_00426_50871_7588.N1	21NOV2011 12:28:27	21NOV2011 12:45:58	0	0	0	0	0
10	MIP_NL__0PNPDK20111121_124558_000049763108_00426_50871_7589.N1	21NOV2011 12:45:58	21NOV2011 14:08:54	0	0	0	0	0
11	MIP_NL__0PNPDK20111121_140737_000058643108_00427_50872_7590.N1	21NOV2011 14:07:37	21NOV2011 15:45:21	0	0	0	0	0
12	MIP_NL__0PNPDK20111121_154437_000059023108_00428_50873_7591.N1	21NOV2011 15:44:37	21NOV2011 17:22:59	0	0	0	0	0
13	MIP_NL__0PNPDK20111121_172158_000059873108_00429_50874_7592.N1	21NOV2011 17:21:58	21NOV2011 19:01:46	0	0	0	0	0
14	MIP_NL__0PNPDK20111121_190041_000060313108_00430_50875_7593.N1	21NOV2011 19:00:41	21NOV2011 20:41:12	0	0	0	0	0
15	MIP_NL__0PNPDE20111121_203959_000043013108_00431_50876_4884.N1	21NOV2011 20:39:59	21NOV2011 21:51:40	0	0	0	0	0
16	MIP_NL__0PNPDE20111121_215042_000061313108_00431_50876_4885.N1	21NOV2011 21:50:42	21NOV2011 23:32:53	0	0	0	0	0
17	MIP_NL__0PNPDE20111121_233148_000060753109_00001_50877_4886.N1	21NOV2011 23:31:48	22NOV2011 01:13:03	0	0	0	0	0

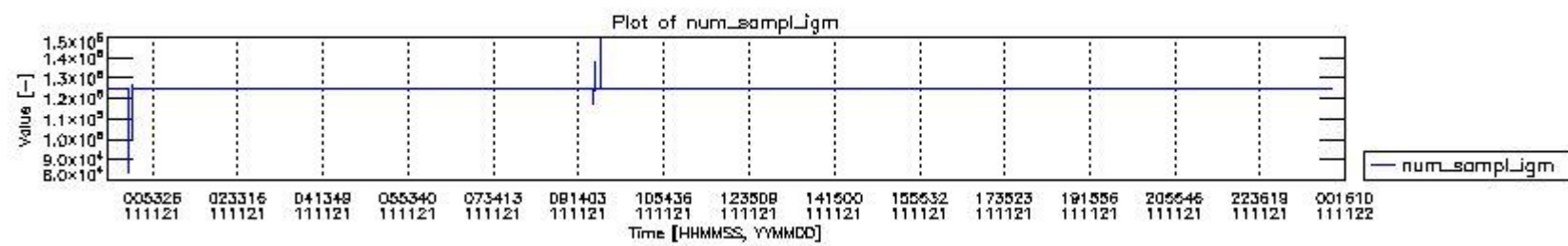
## 0.2 Instrument Operational Performance Parameters

The following plots give an overview of various instrument parameters for this day. The instrument parameters are part of the auxiliary data field within the source packets of the MIP\_NL\_\_0P product. The auxiliary data is normally included twice per interferogram. Note that only the first packet is currently included in monitoring.

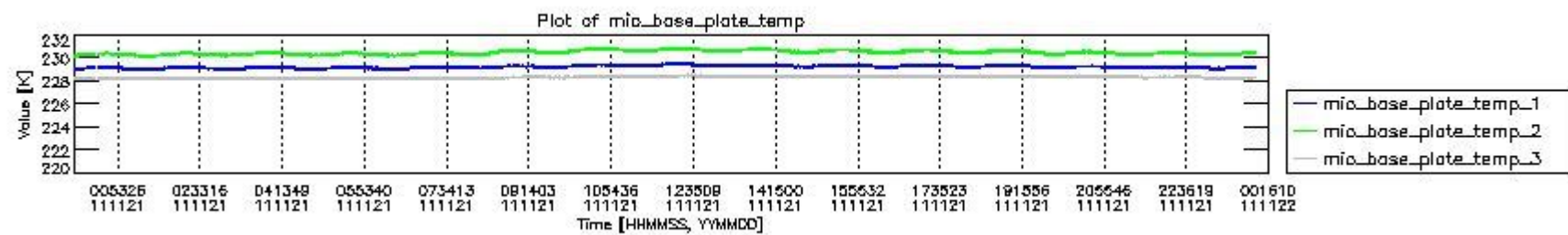
The following table shows the counts of various interferogram number of samples

Number of igm samples	Count [#]	Count [%]
-----------------------	-----------	-----------

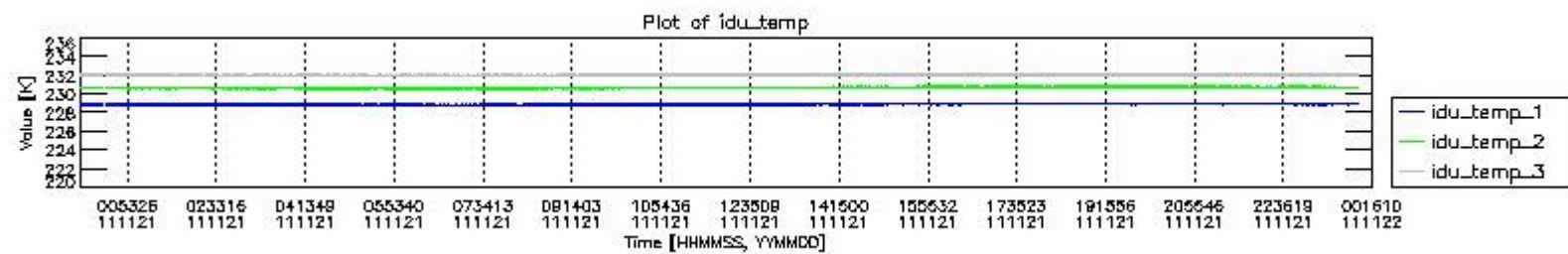
83486	1	0.0024086519
94077	1	0.0024086519
100706	1	0.0024086519
114209	1	0.0024086519
117643	1	0.0024086519
124800	38573	92.908929
124803	2932	7.0621673
125958	1	0.0024086519
127010	1	0.0024086519
127116	1	0.0024086519
130618	1	0.0024086519
137775	1	0.0024086519
147142	1	0.0024086519
149352	1	0.0024086519



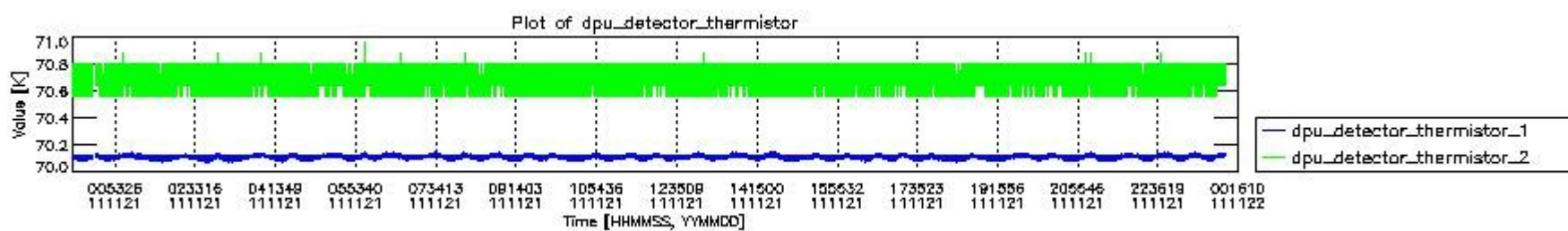
mipas\_daily\_report\_level0\_KSPT\_L0\_4504\_N\_20111121\_0.PNG



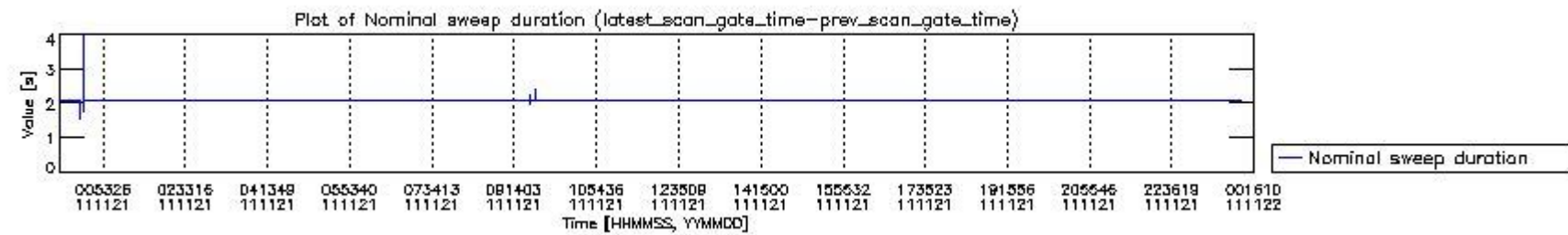
mipas\_daily\_report\_level0\_KSPT\_L0\_4504\_N\_20111121\_1.PNG



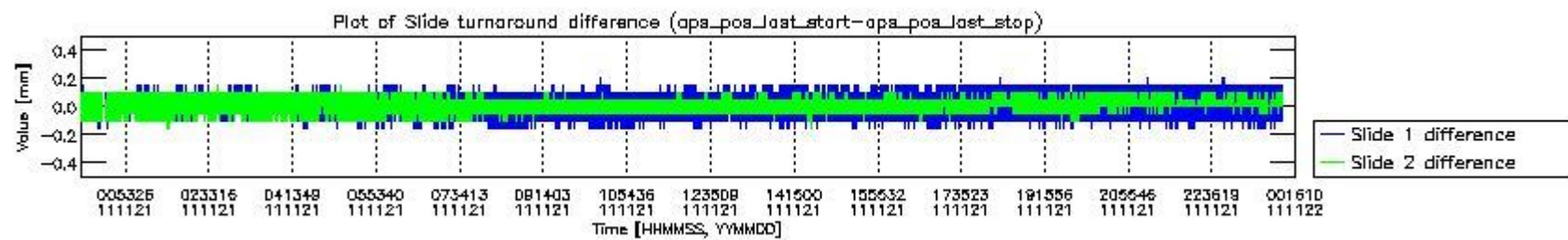
mipas\_daily\_report\_level0\_KSPT\_L0\_4504\_N\_20111121\_2.PNG



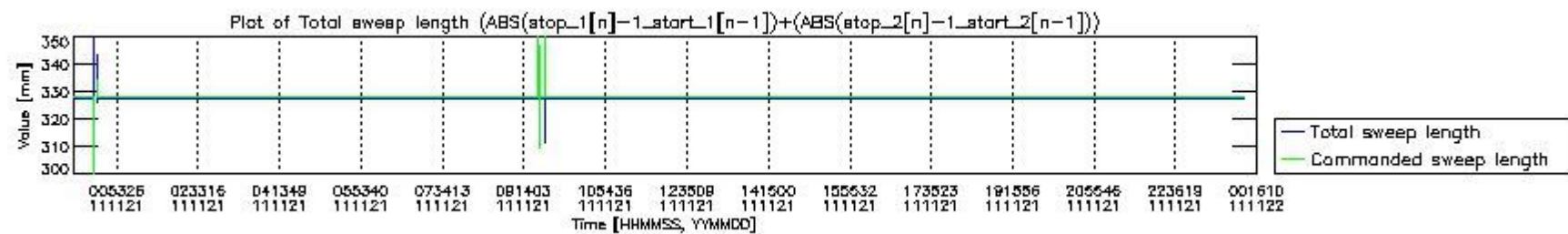
mipas\_daily\_report\_level0\_KSPT\_L0\_4504\_N\_20111121\_3.PNG



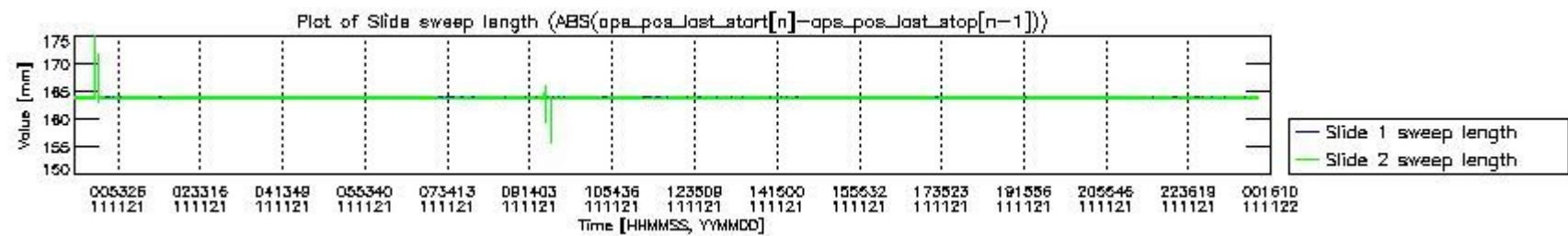
mipas\_daily\_report\_level0\_KSPT\_L0\_4504\_N\_20111121\_4.PNG



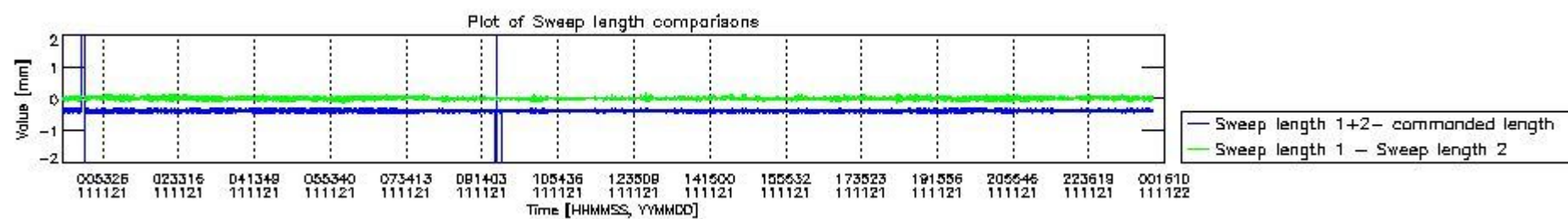
mipas\_daily\_report\_level0\_KSPT\_L0\_4504\_N\_20111121\_5.PNG



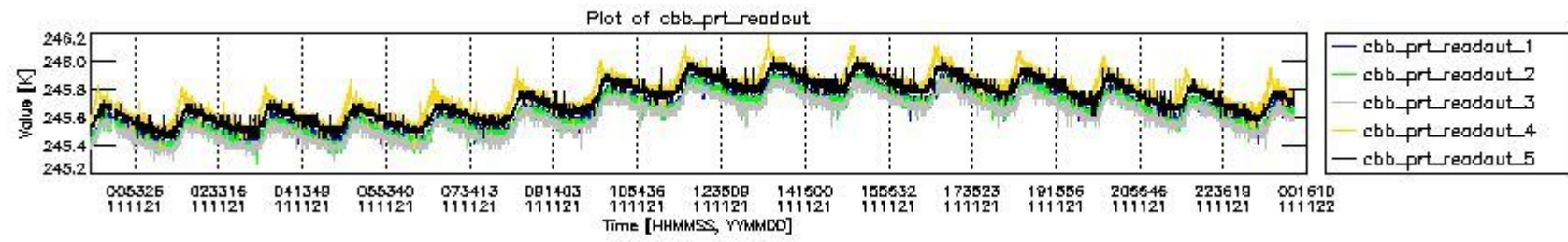
mipas\_daily\_report\_level0\_KSPT\_L0\_4504\_N\_20111121\_6.PNG



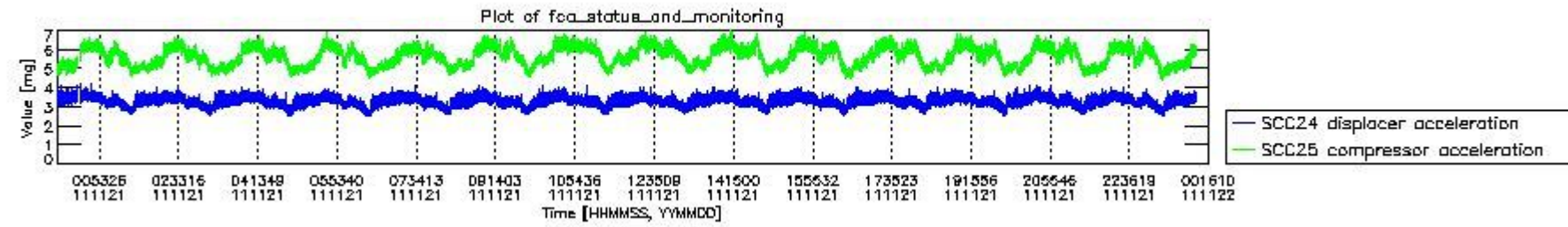
mipas\_daily\_report\_level0\_KSPT\_L0\_4504\_N\_20111121\_7.PNG



mipas\_daily\_report\_level0\_KSPT\_L0\_4504\_N\_20111121\_8.PNG



mipas\_daily\_report\_level0\_KSPT\_L0\_4504\_N\_20111121\_9.PNG



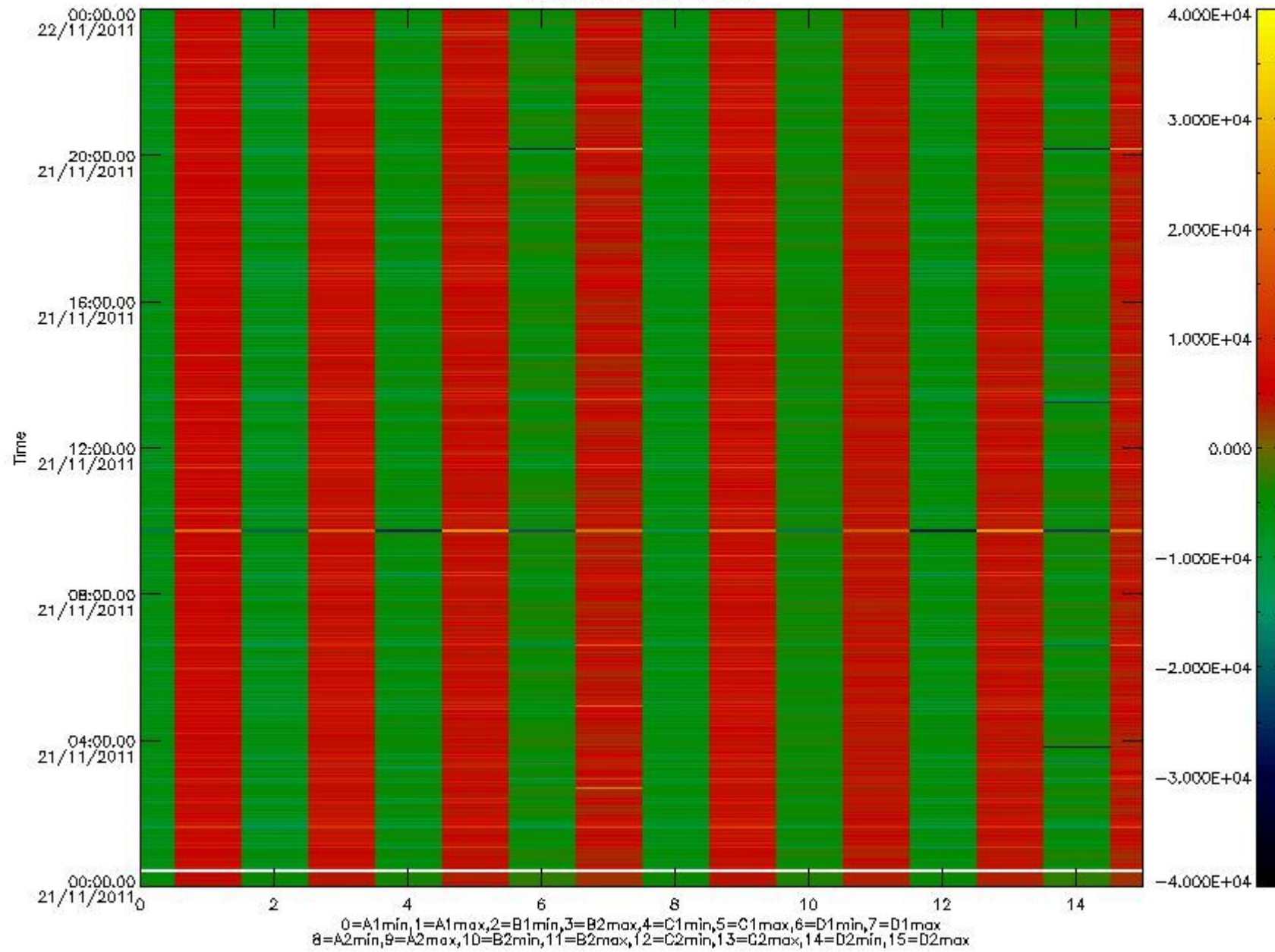
mipas\_daily\_report\_level0\_KSPT\_L0\_4504\_N\_20111121\_10.PNG

The following table shows channel statistics for all channels for this day.

Channel	Min	Max	ADC
A1	-18489	19610	16bit
B1	-21014	18019	16bit
C1	-25885	25735	16bit
D1	-32768	32767	16bit
A2	-16019	19814	16bit
B2	-18922	18538	16bit
C2	-26875	26467	16bit
D2	-32768	32767	16bit



MIPNL0P\_MIPSOUPAC\_aux\_fields\_igm\_cal, channel statistics plot  
Colour indicates value.



mipas\_daily\_report\_level0\_KSPT\_L0\_4504\_N\_20111121\_11.PNG

### 0.3 ADF monitoring

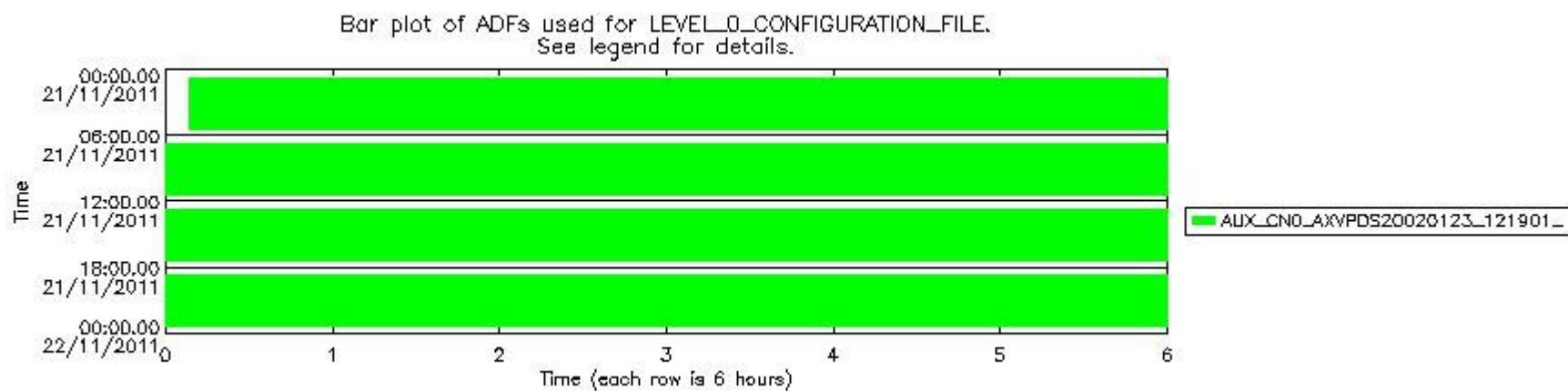
The use of ADFs is shown in two ways:

1. By means of two tables that can be used to find the ADF used for a specific product.
2. By means of plots that show changes in ADF using colours.

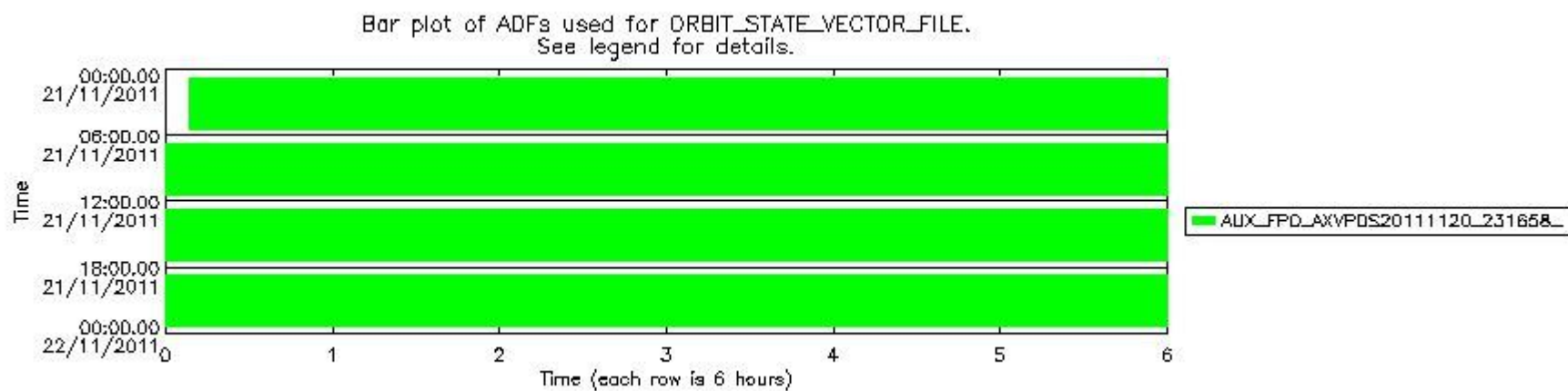
Number	ADF
0	AUX_CN0_AXVPDS20020123_121901_20020101_000000_20200101_000000
1	AUX_FPO_AXVPDS20111120_231658_20111120_192030_20111130_213412

Number	Product name	#CN0	#FPO
0	MIP_NL_0PNPDE20111121_000839_000060373108_00418_50863_4880.N1	0	1

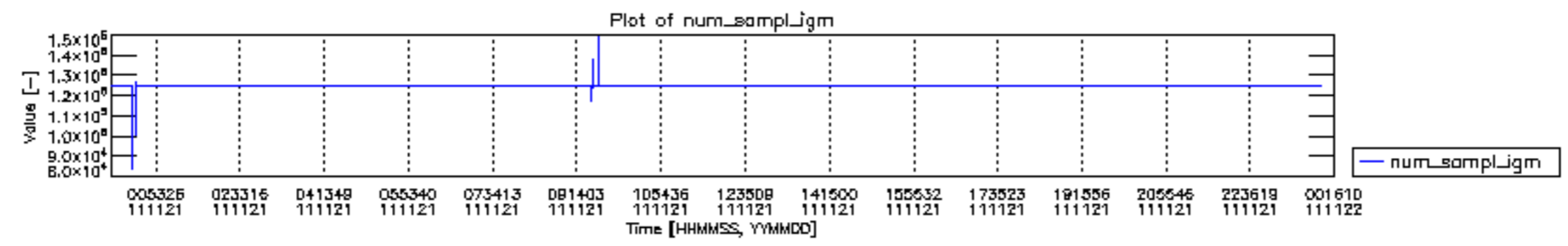
1	MIP_NL__0PNPDE20111121_002901_000048153108_00419_50864_0056.N1	0	1
2	MIP_NL__0PNPDE20111121_014817_000043833108_00419_50864_4881.N1	0	1
3	MIP_NL__0PNPDE20111121_030047_000061653108_00420_50865_4882.N1	0	1
4	MIP_NL__0PNPDE20111121_044258_000060463108_00421_50866_4883.N1	0	1
5	MIP_NL__0PNPDK20111121_062308_000040303108_00422_50867_7584.N1	0	1
6	MIP_NL__0PNPDK20111121_072919_000061713108_00423_50868_7585.N1	0	1
7	MIP_NL__0PNPDK20111121_091034_000060093108_00424_50869_7586.N1	0	1
8	MIP_NL__0PNPDK20111121_104905_000060623108_00425_50870_7587.N1	0	1
9	MIP_NL__0PNPDK20111121_122827_000010513108_00426_50871_7588.N1	0	1
10	MIP_NL__0PNPDK20111121_124558_000049763108_00426_50871_7589.N1	0	1
11	MIP_NL__0PNPDK20111121_140737_000058643108_00427_50872_7590.N1	0	1
12	MIP_NL__0PNPDK20111121_154437_000059023108_00428_50873_7591.N1	0	1
13	MIP_NL__0PNPDK20111121_172158_000059873108_00429_50874_7592.N1	0	1
14	MIP_NL__0PNPDK20111121_190041_000060313108_00430_50875_7593.N1	0	1
15	MIP_NL__0PNPDE20111121_203959_000043013108_00431_50876_4884.N1	0	1
16	MIP_NL__0PNPDE20111121_215042_000061313108_00431_50876_4885.N1	0	1
17	MIP_NL__0PNPDE20111121_233148_000060753109_00001_50877_4886.N1	0	1

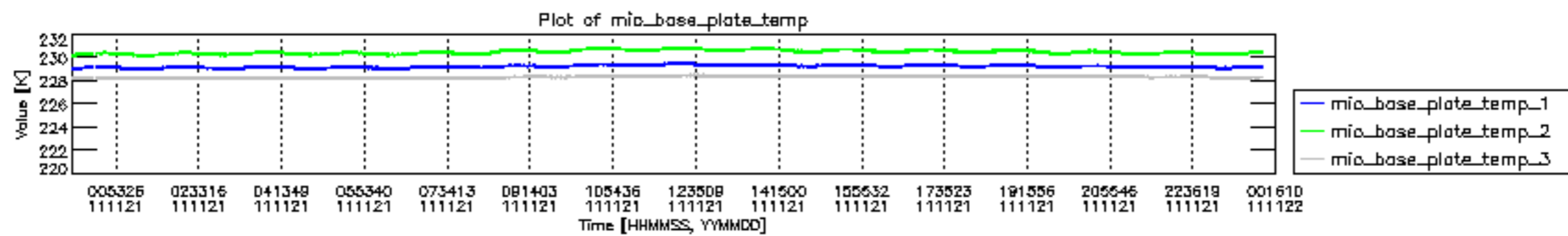


mipas\_daily\_report\_level0\_KSPT\_L0\_4504\_N\_20111121\_12.PNG

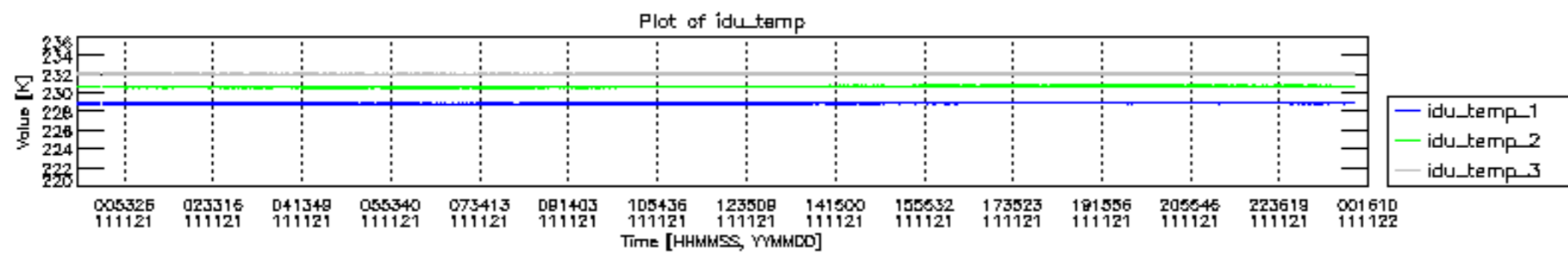


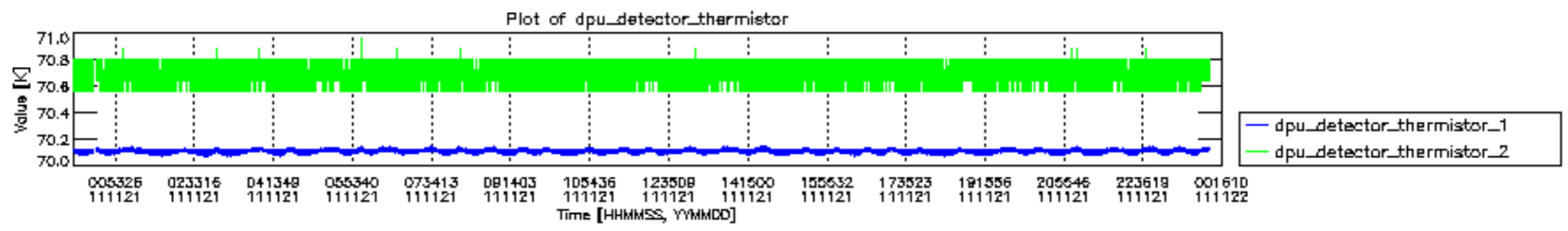
mipas\_daily\_report\_level0\_KSPT\_L0\_4504\_N\_20111121\_13.PNG

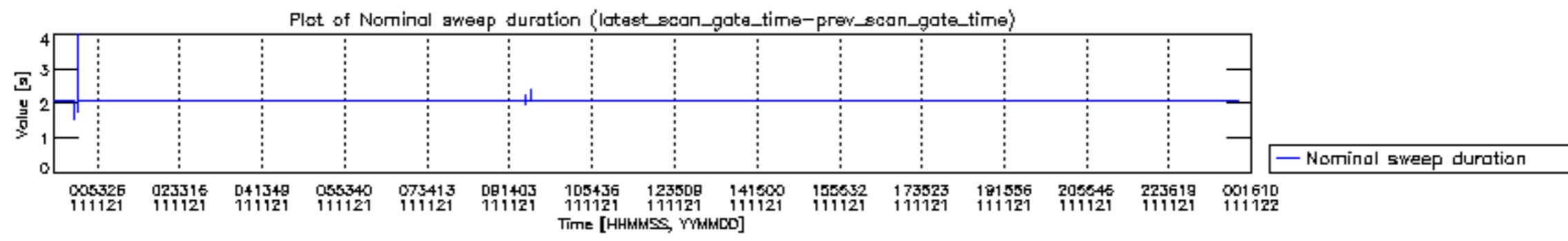


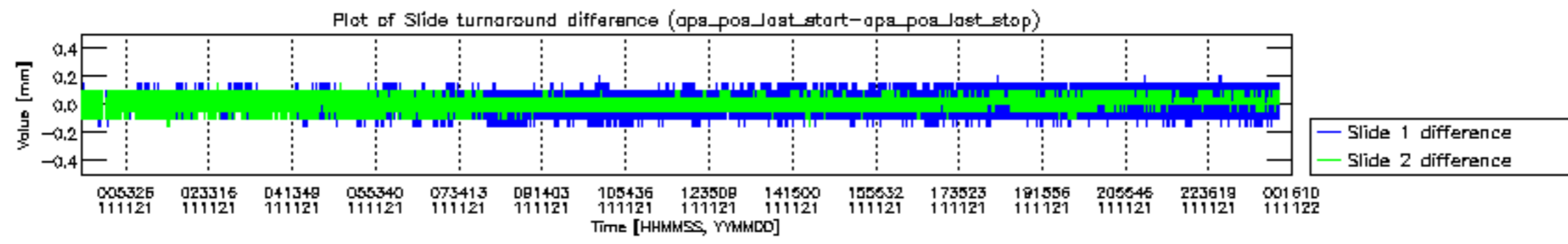


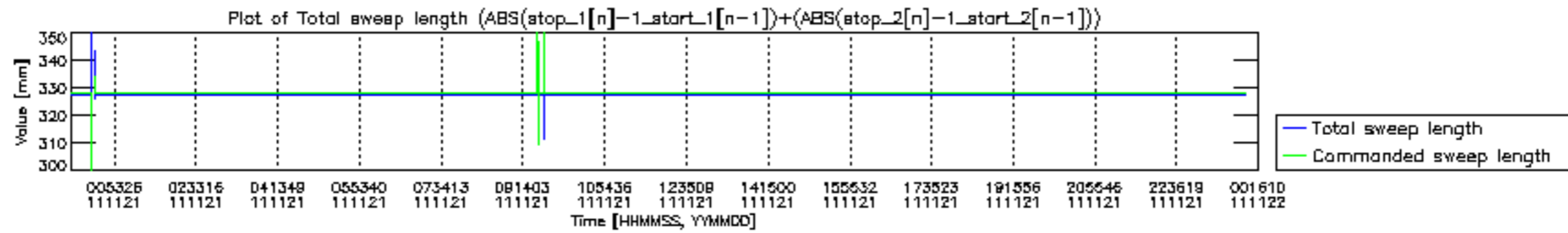




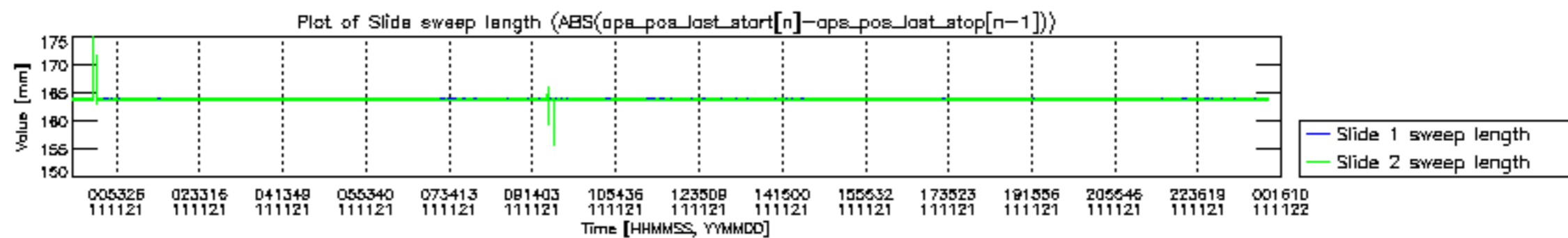


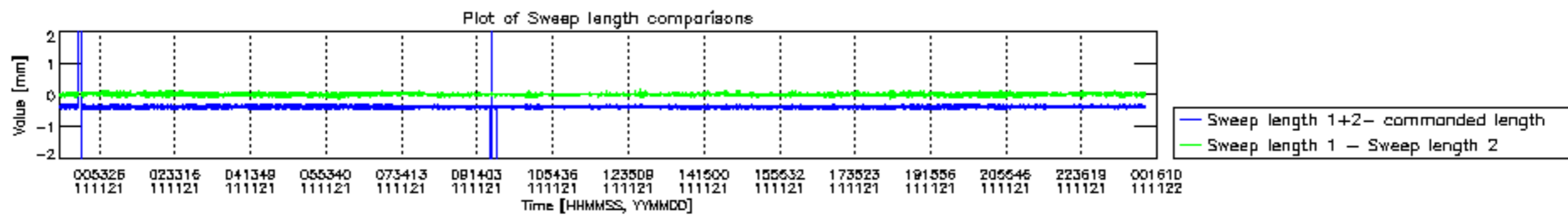


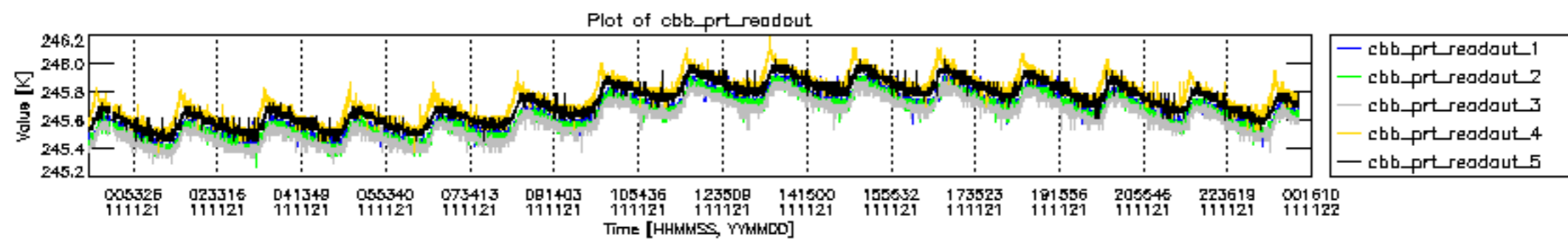


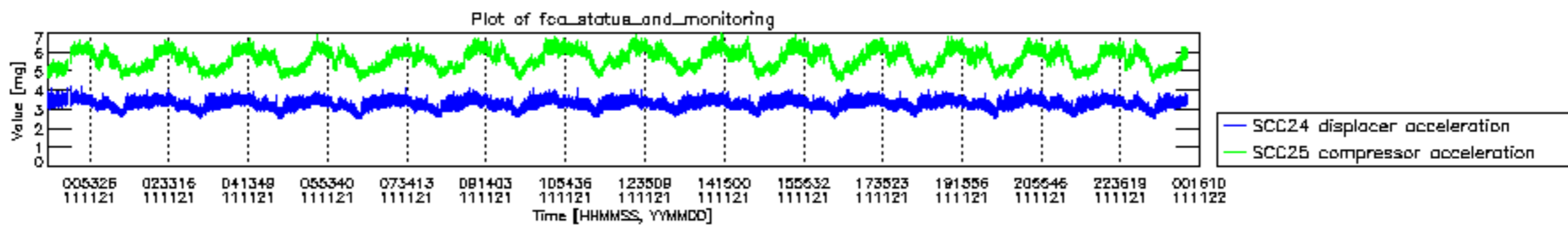












MIPNLOP\_MIPSOUPAC\_aux\_fields\_igm\_cal, channel statistics plot  
 Colour indicates value.

