

0. MIPAS Daily Report for level 0 products

[0.1 General Info](#)

[0.2 Instrument Operational Performance Parameters](#)

[0.3 ADF monitoring](#)

0.1 General Info

This report contains a daily analysis on parameters extracted from MIPAS level 0 data (The MIP_NL__0P product).

0.1.1 Report summary

The table below shows general characteristics of the data that are included into this report.

Item	Value
Report version	v1.6 08-11-2010
Time of report generation	23NOV2011 05:23:45
Data source version	KSPT_L0/4504-N
Processing scope for products	18NOV2011 00:00:00 to 19NOV2011 00:00:00
Start time of first product within scope	18NOV2011 00:18:41
Stop time of last product within scope	19NOV2011 01:22:17
Total number of level 0 products	15
Number of level 0 products with errors	1

0.1.2 Product Quality Indicators per product

The following table shows a summary for each product used in this report.

#	Product name	Start time	Stop time	Prod err	ISP err sign	ISP miss sign	ISP disc sign	rs sign
0	MIP_NL__0PNPDE20111118_001841_000059503108_00375_50820_4858.N1	18NOV2011 00:18:41	18NOV2011 01:57:51	0	0	0	0	0
1	MIP_NL__0PNPDE20111118_015652_000044253108_00376_50821_4859.N1	18NOV2011 01:56:52	18NOV2011 03:10:37	0	0	0	0	0
2	MIP_NL__0PNPDE20111118_031003_000062253108_00377_50822_4860.N1	18NOV2011 03:10:03	18NOV2011 04:53:49	0	0	0	0	0
3	MIP_NL__0PNPDK20111118_063225_000041073108_00379_50824_7554.N1	18NOV2011 06:32:25	18NOV2011 07:40:52	0	0	0	0	0
4	MIP_NL__0PNPDK20111118_073953_000060213108_00380_50825_7555.N1	18NOV2011 07:39:53	18NOV2011 09:20:15	0	0	0	0	0
5	MIP_NL__0PNPDK20111118_091841_000061233108_00381_50826_7556.N1	18NOV2011 09:18:41	18NOV2011 11:00:44	0	0	0	0	0
6	MIP_NL__0PNPDK20111118_105903_000060233108_00382_50827_7557.N1	18NOV2011 10:59:03	18NOV2011 12:39:26	0	0	0	0	0
7	MIP_NL__0PNPDK20111118_123756_000060673108_00383_50828_7558.N1	18NOV2011 12:37:56	18NOV2011 14:19:03	1	1	0	0	0
8	MIP_NL__0PNPDK20111118_141802_000058893108_00384_50829_7559.N1	18NOV2011 14:18:02	18NOV2011 15:56:11	0	0	0	0	0
9	MIP_NL__0PNPDK20111118_155525_000057953108_00385_50830_7560.N1	18NOV2011 15:55:25	18NOV2011 17:32:00	0	0	0	0	0
10	MIP_NL__0PNPDK20111118_173100_000058973108_00386_50831_7561.N1	18NOV2011 17:31:00	18NOV2011 19:09:17	0	0	0	0	0
11	MIP_NL__0PNPDK20111118_190804_000061633108_00387_50832_7563.N1	18NOV2011 19:08:04	18NOV2011 20:50:47	0	0	0	0	0
12	MIP_NL__0PNPDE20111118_204839_000044793108_00388_50833_4863.N1	18NOV2011 20:48:39	18NOV2011 22:03:18	0	0	0	0	0
13	MIP_NL__0PNPDE20111118_220213_000060563108_00388_50833_4864.N1	18NOV2011 22:02:13	18NOV2011 23:43:10	0	0	0	0	0
14	MIP_NL__0PNPDE20111118_234203_000060143108_00389_50834_4865.N1	18NOV2011 23:42:03	19NOV2011 01:22:17	0	0	0	0	0

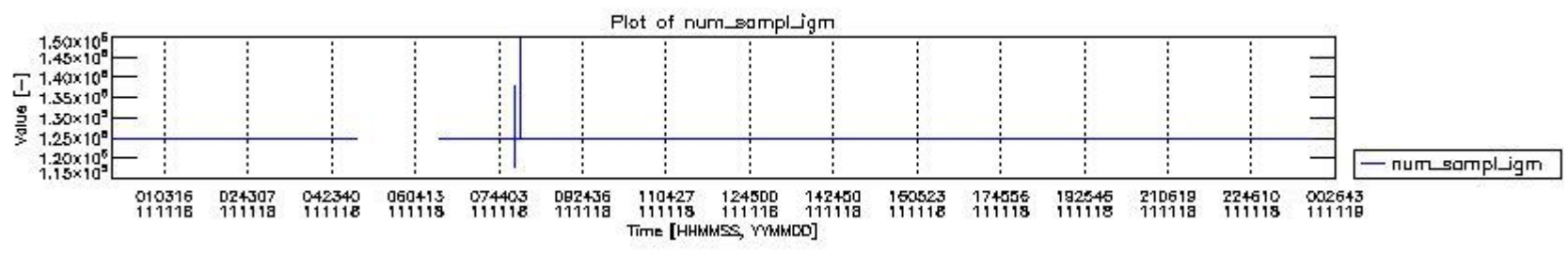
0.2 Instrument Operational Performance Parameters

The following plots give an overview of various instrument parameters for this day. The instrument parameters are part of the auxiliary data field within the source packets of the MIP_NL__0P product. The auxiliary data is normally included twice per interferogram. Note that only the first packet is currently included in monitoring.

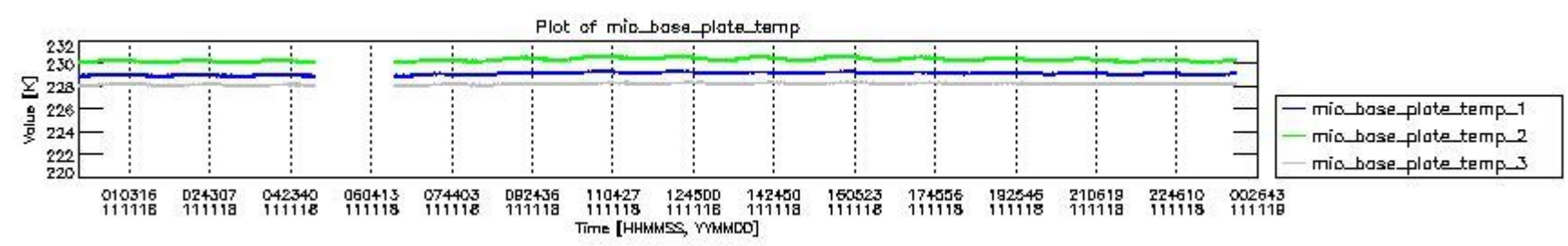
The following table shows the counts of various interferogram number of samples

Number of igm samples	Count [#]	Count [%]
117866	1	0.0025737376
124800	36092	92.891337
124803	2756	7.0932208

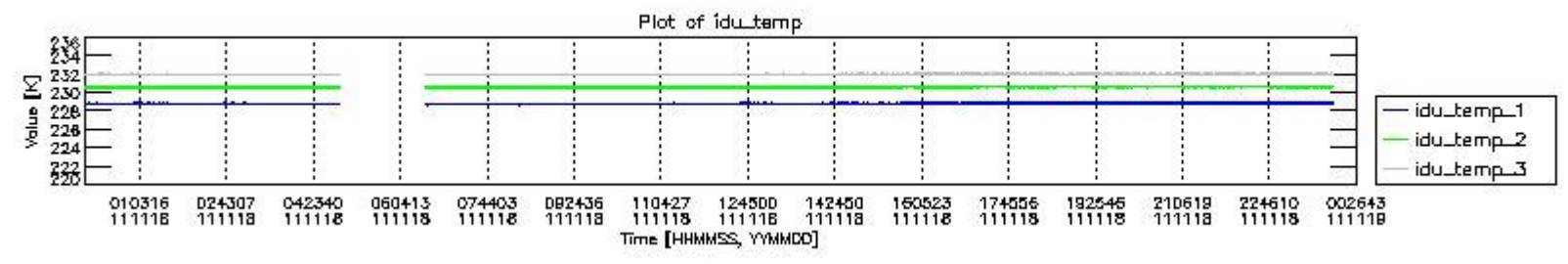
127159	1	0.0025737376
131064	1	0.0025737376
137998	1	0.0025737376
147291	1	0.0025737376
149650	1	0.0025737376



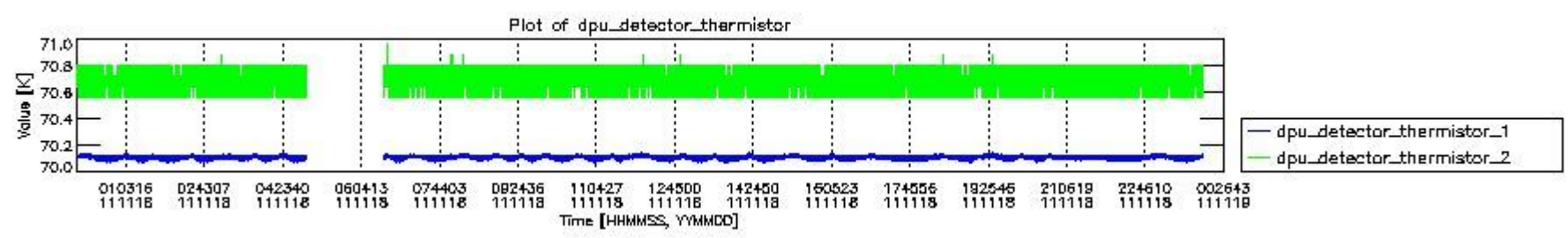
mipas_daily_report_level0_KSPT_L0_4504_N_20111118_0.PNG



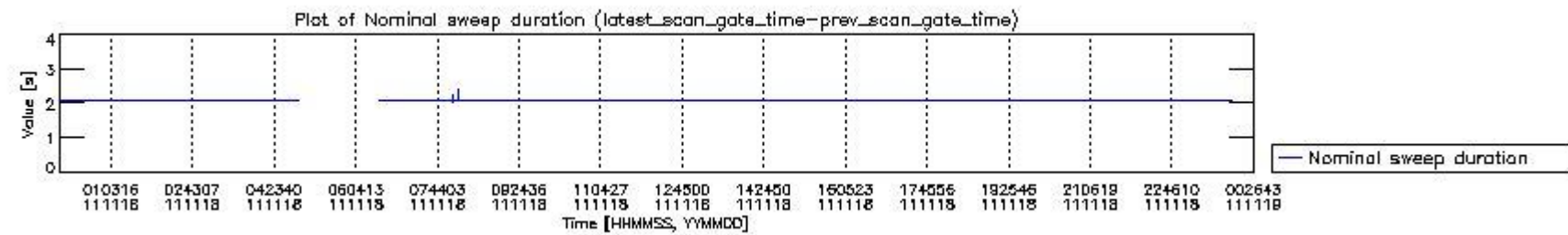
mipas_daily_report_level0_KSPT_L0_4504_N_20111118_1.PNG



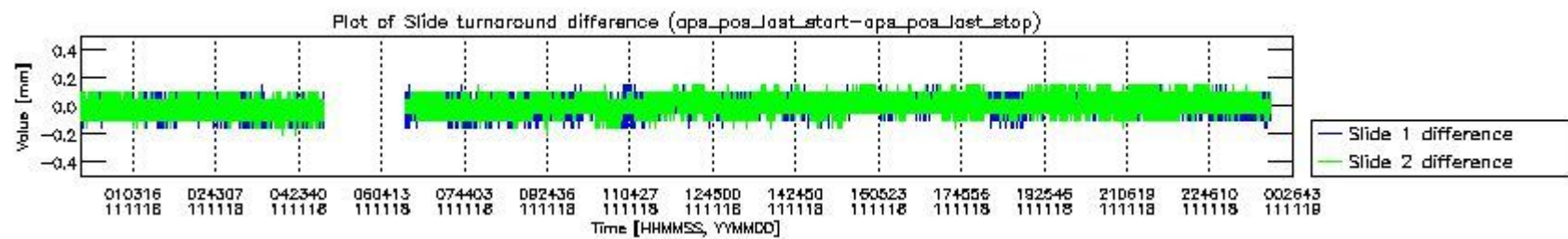
mipas_daily_report_level0_KSPT_L0_4504_N_20111118_2.PNG



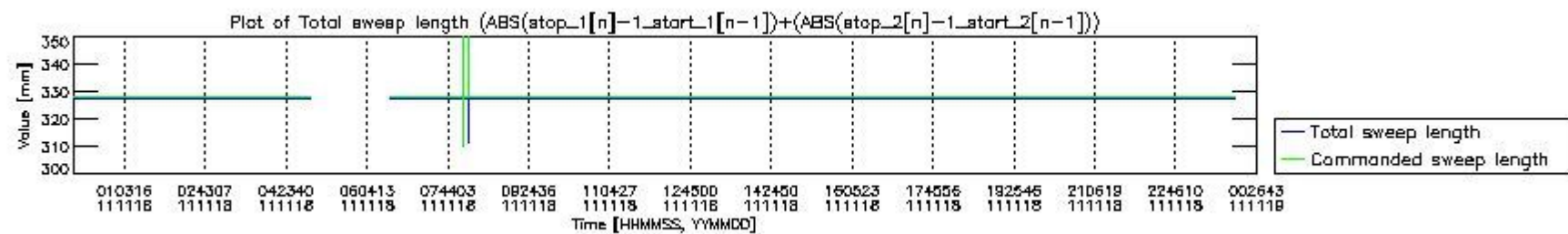
mipas_daily_report_level0_KSPT_L0_4504_N_20111118_3.PNG



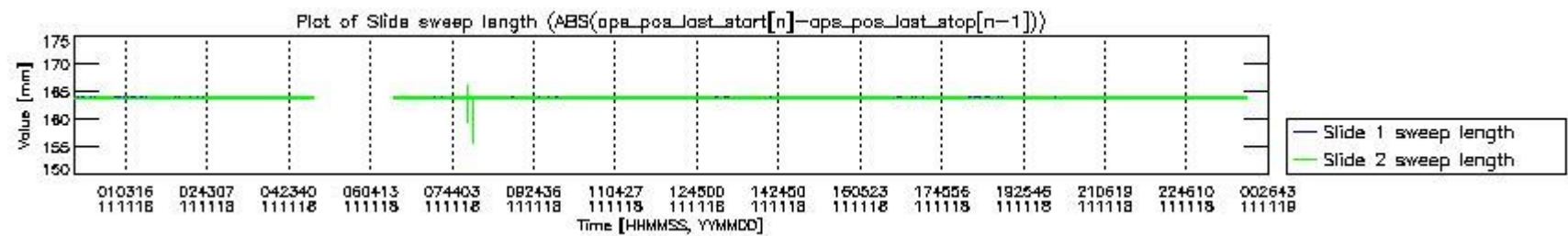
mipas_daily_report_level0_KSPT_L0_4504_N_20111118_4.PNG



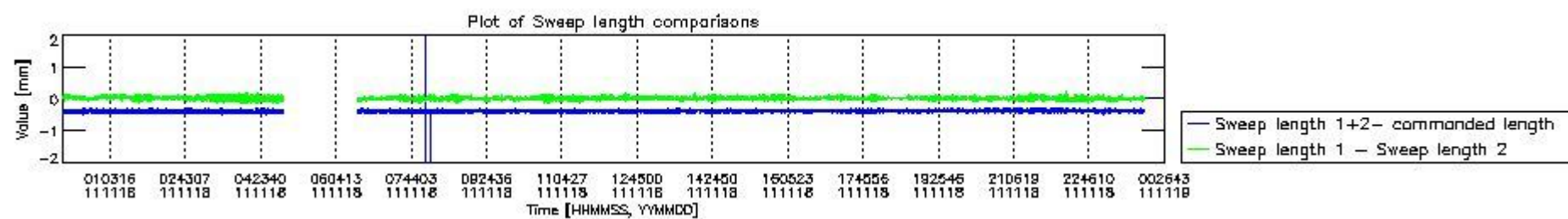
mipas_daily_report_level0_KSPT_L0_4504_N_20111118_5.PNG



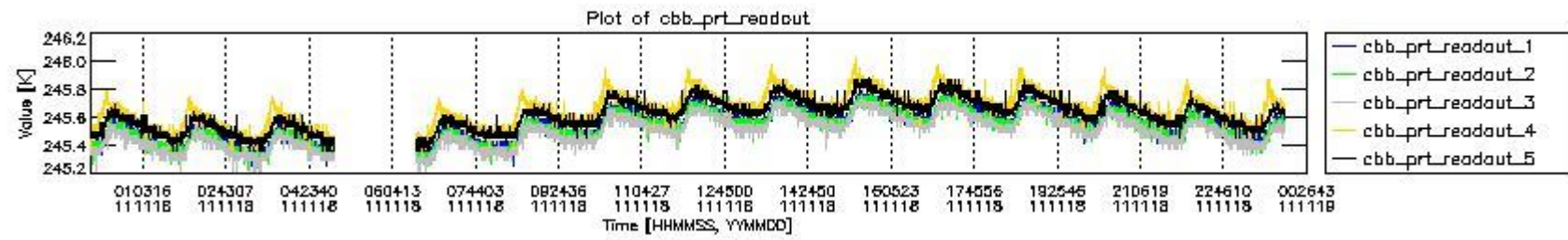
mipas_daily_report_level0_KSPT_L0_4504_N_20111118_6.PNG



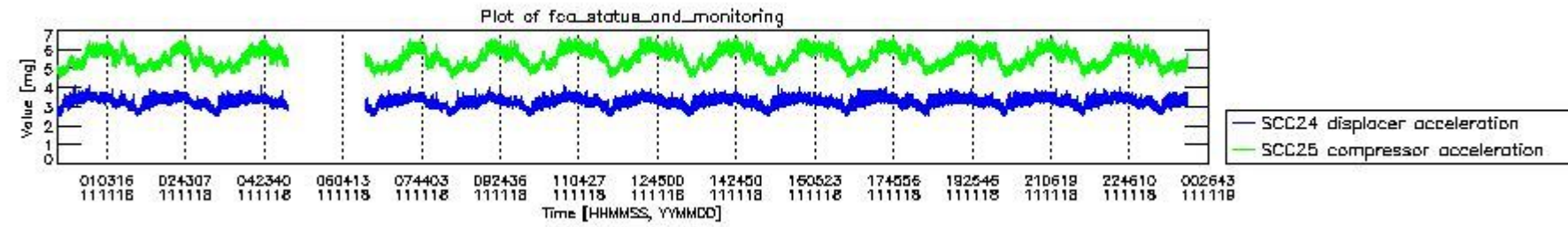
mipas_daily_report_level0_KSPT_L0_4504_N_20111118_7.PNG



mipas_daily_report_level0_KSPT_L0_4504_N_20111118_8.PNG



mipas_daily_report_level0_KSPT_L0_4504_N_20111118_9.PNG

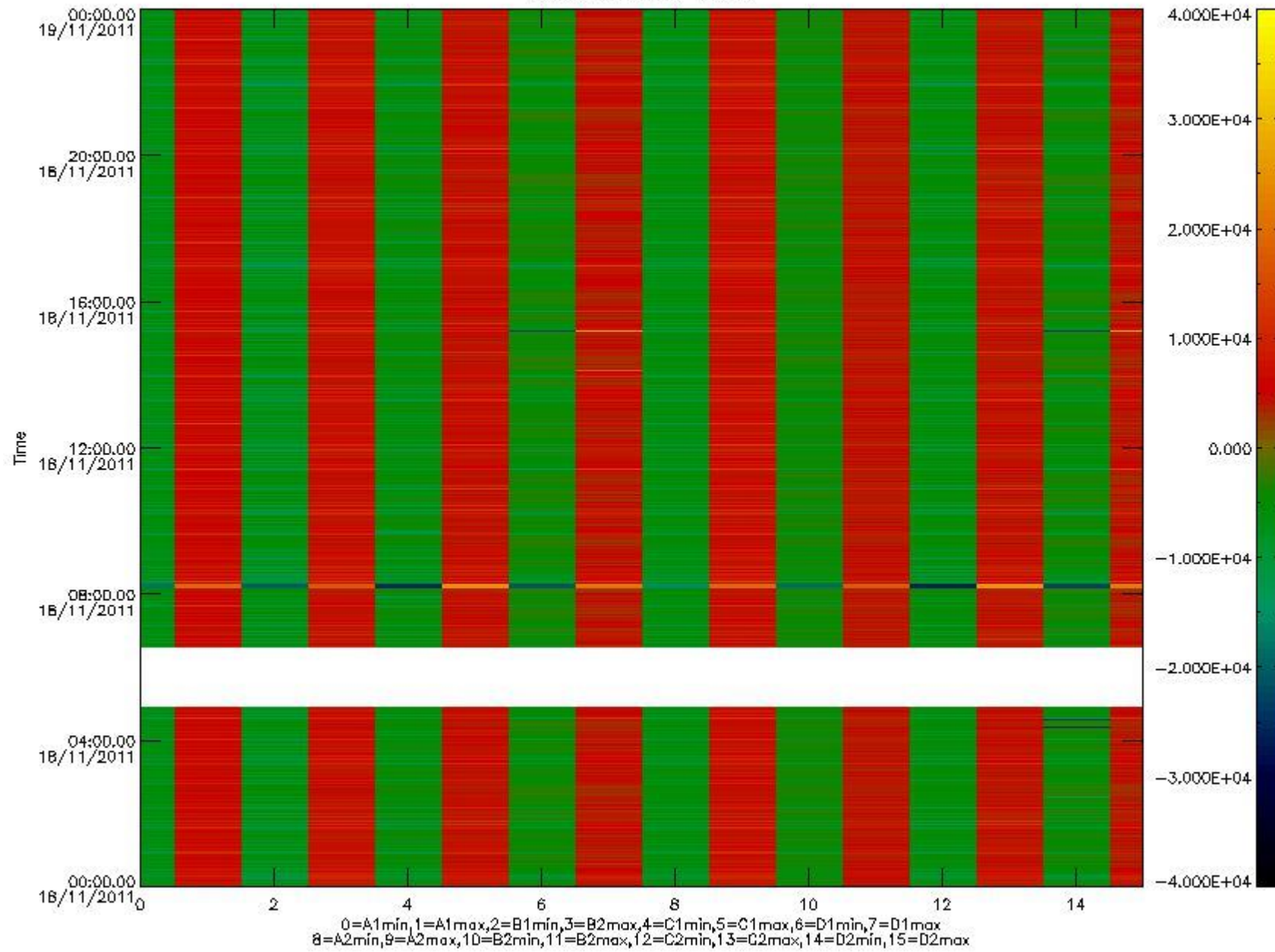


mipas_daily_report_level0_KSPT_L0_4504_N_20111118_10.PNG

The following table shows channel statistics for all channels for this day.

Channel	Min	Max	ADC
A1	-18452	19563	16bit
B1	-20901	17920	16bit
C1	-25669	25535	16bit
D1	-32768	32767	16bit
A2	-15972	19757	16bit
B2	-18816	18424	16bit
C2	-26702	26268	16bit
D2	-32768	32767	16bit

MIPNLOP_MIPSOUPAC_aux_fields_igm_cal, channel statistics plot
Colour indicates value.



mipas_daily_report_level0_KSPT_L0_4504_N_20111118_11.PNG

0.3 ADF monitoring

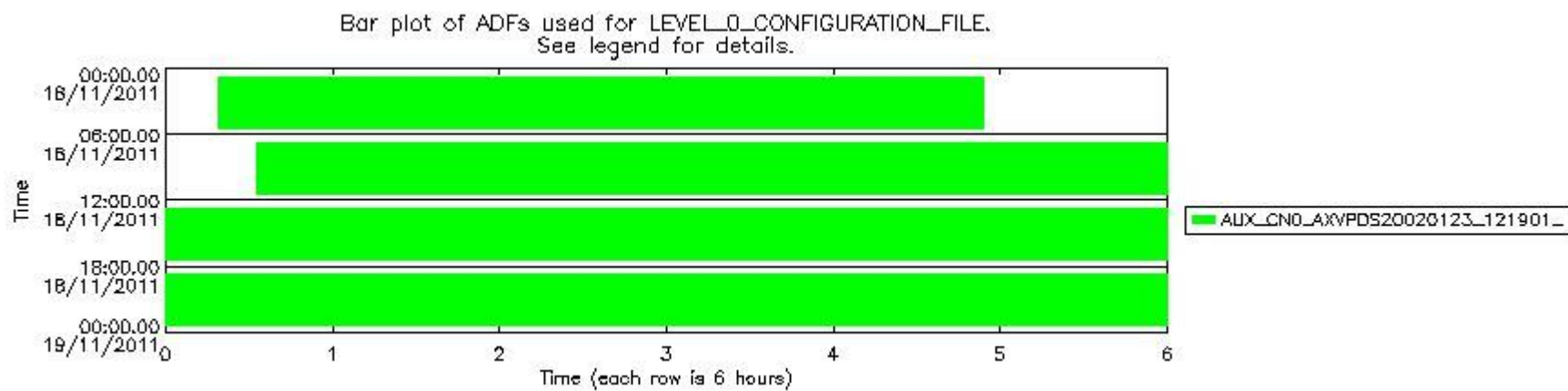
The use of ADFs is shown in two ways:

1. By means of two tables that can be used to find the ADF used for a specific product.
2. By means of plots that show changes in ADF using colours.

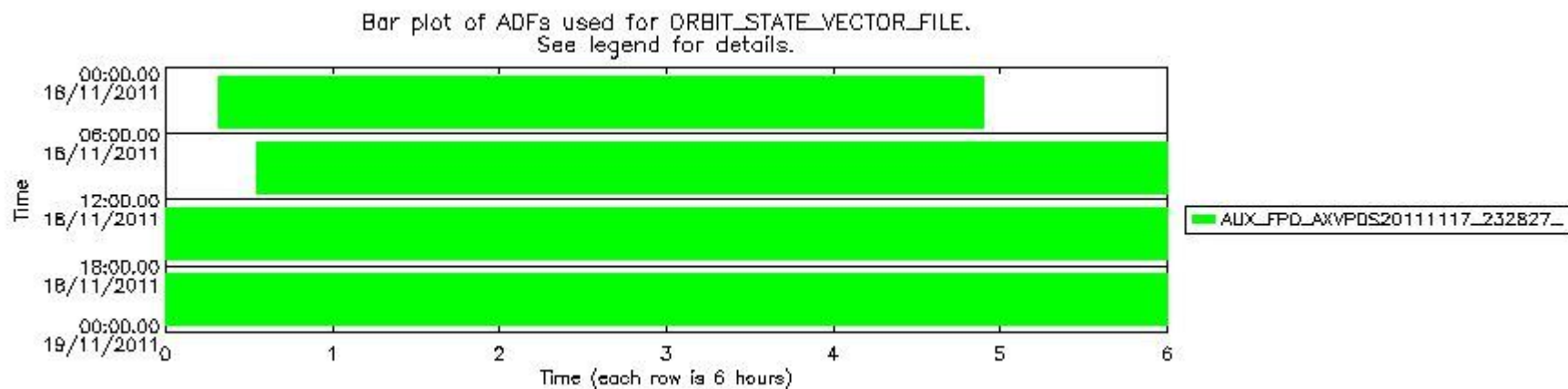
Number	ADF
0	AUX_CN0_AXVPDS20020123_121901_20020101_000000_20200101_000000
1	AUX_FPO_AXVPDS20111117_232827_20111117_193030_20111127_200359

Number	Product name	#CN0	#FPO
0	MIP_NL_0PNPDE20111118_001841_000059503108_00375_50820_4858.N1	0	1

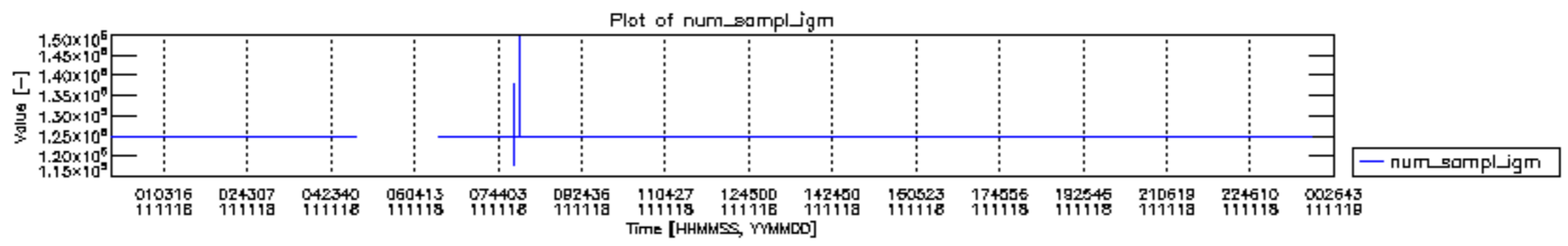
1	MIP_NL__0PNPDE20111118_015652_000044253108_00376_50821_4859.N1	0	1
2	MIP_NL__0PNPDE20111118_031003_000062253108_00377_50822_4860.N1	0	1
3	MIP_NL__0PNPDK20111118_063225_000041073108_00379_50824_7554.N1	0	1
4	MIP_NL__0PNPDK20111118_073953_000060213108_00380_50825_7555.N1	0	1
5	MIP_NL__0PNPDK20111118_091841_000061233108_00381_50826_7556.N1	0	1
6	MIP_NL__0PNPDK20111118_105903_000060233108_00382_50827_7557.N1	0	1
7	MIP_NL__0PNPDK20111118_123756_000060673108_00383_50828_7558.N1	0	1
8	MIP_NL__0PNPDK20111118_141802_000058893108_00384_50829_7559.N1	0	1
9	MIP_NL__0PNPDK20111118_155525_000057953108_00385_50830_7560.N1	0	1
10	MIP_NL__0PNPDK20111118_173100_000058973108_00386_50831_7561.N1	0	1
11	MIP_NL__0PNPDK20111118_190804_000061633108_00387_50832_7563.N1	0	1
12	MIP_NL__0PNPDE20111118_204839_000044793108_00388_50833_4863.N1	0	1
13	MIP_NL__0PNPDE20111118_220213_000060563108_00388_50833_4864.N1	0	1
14	MIP_NL__0PNPDE20111118_234203_000060143108_00389_50834_4865.N1	0	1

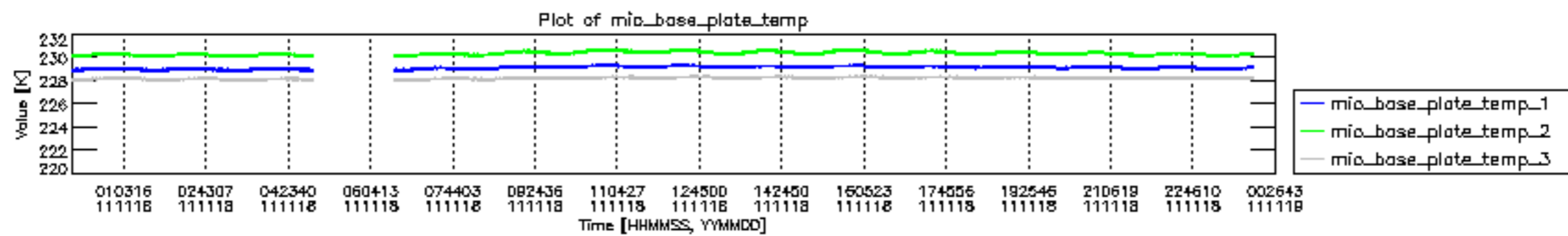


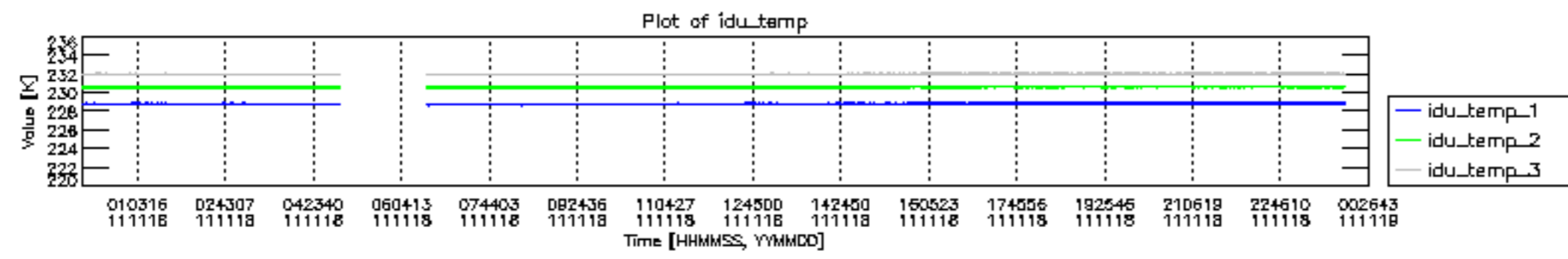
mipas_daily_report_level0_KSPT_L0_4504_N_20111118_12.PNG

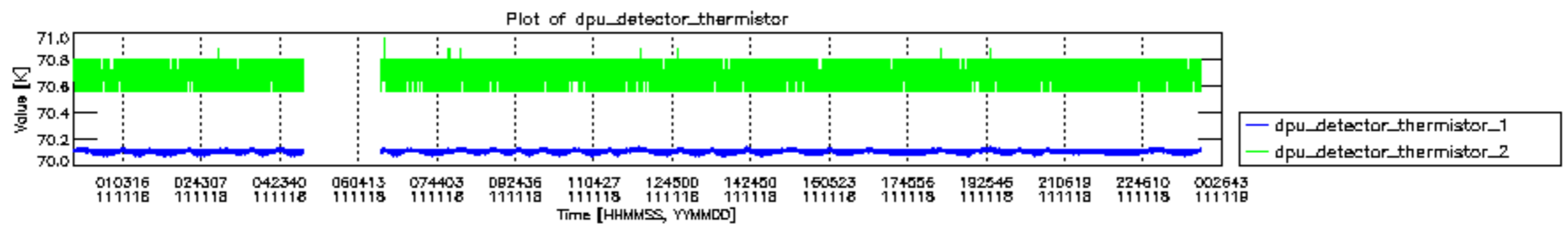


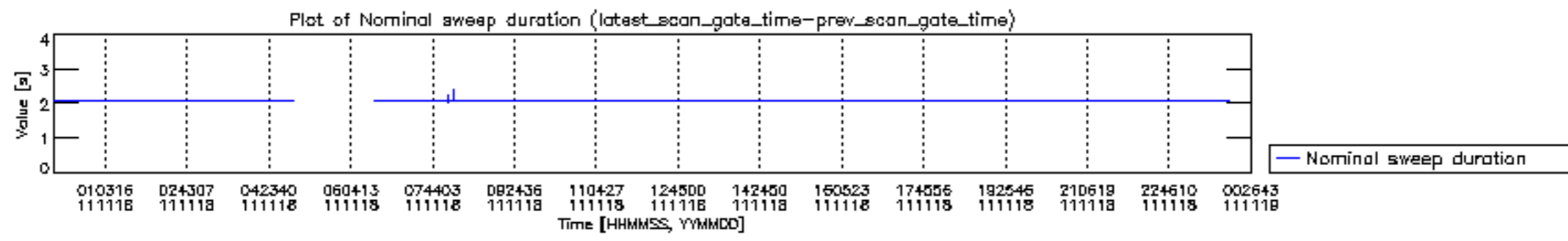
mipas_daily_report_level0_KSPT_L0_4504_N_20111118_13.PNG

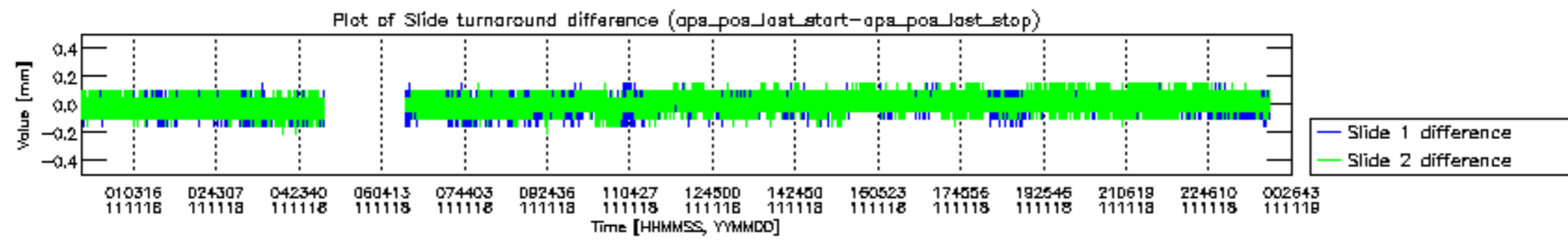


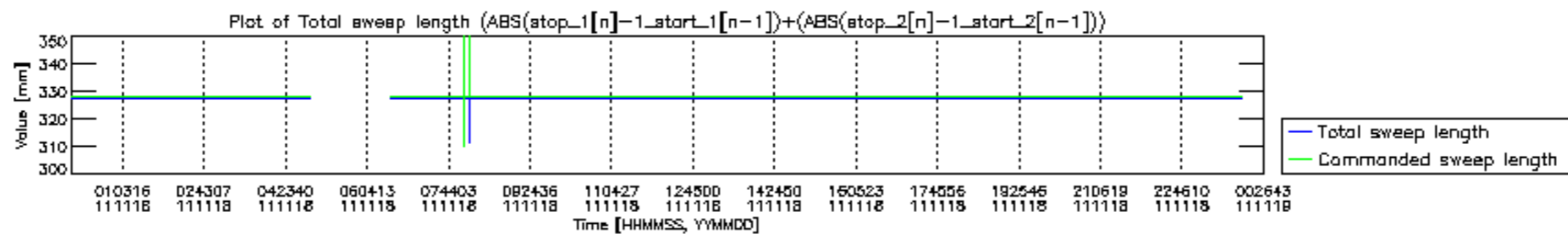


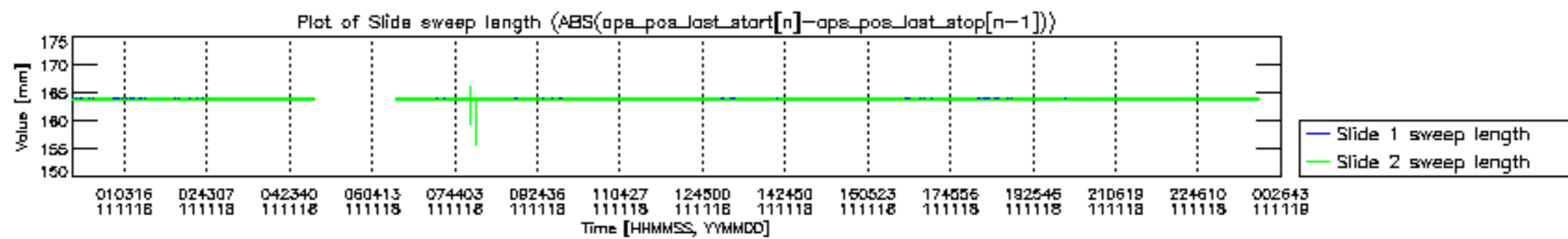


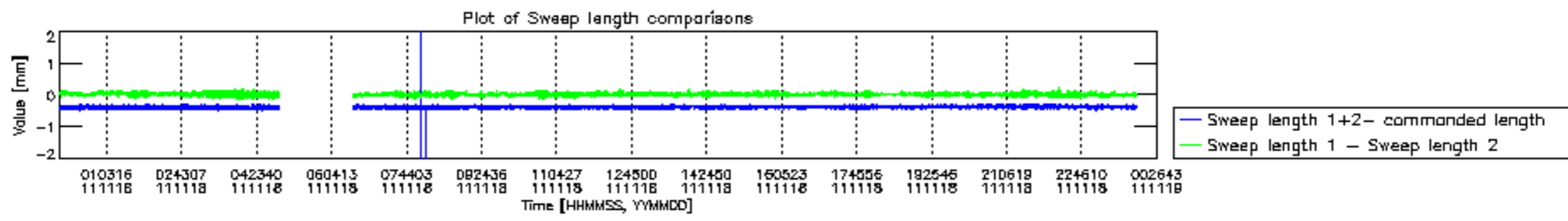


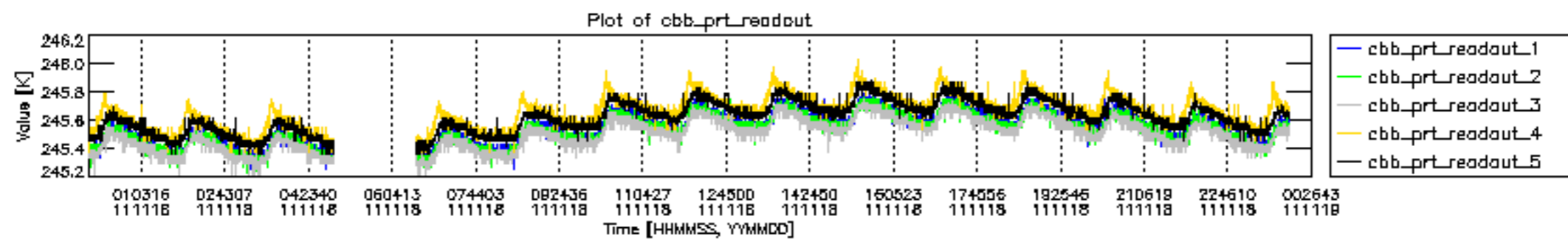


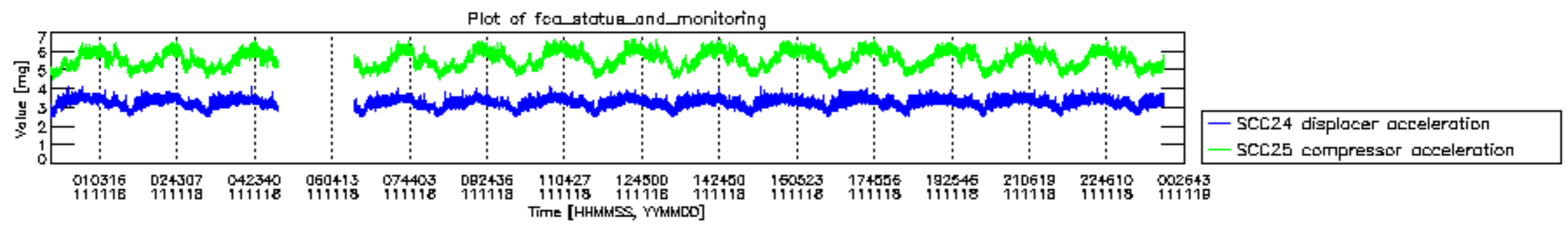












MIPNLOP_MIPSOUPAC_aux_fields_igm_cal, channel statistics plot
 Colour indicates value.

