

0. MIPAS Daily Report for level 0 products

[0.1 General Info](#)

[0.2 Instrument Operational Performance Parameters](#)

[0.3 ADF monitoring](#)

0.1 General Info

This report contains a daily analysis on parameters extracted from MIPAS level 0 data (The MIP_NL__0P product).

0.1.1 Report summary

The table below shows general characteristics of the data that are included into this report.

Item	Value
Report version	v1.6 08-11-2010
Time of report generation	10NOV2011 05:24:30
Data source version	KSPT_L0/4504-N
Processing scope for products	05NOV2011 00:00:00 to 06NOV2011 00:00:00
Start time of first product within scope	05NOV2011 00:15:35
Stop time of last product within scope	06NOV2011 01:00:11
Total number of level 0 products	15
Number of level 0 products with errors	0

0.1.2 Product Quality Indicators per product

The following table shows a summary for each product used in this report.

#	Product name	Start time	Stop time	Prod err	ISP err sign	ISP miss sign	ISP disc sign	rs sign
0	MIP_NL__0PNPDE20111105_001535_000047633108_00189_50634_9945.N1	05NOV2011 00:15:35	05NOV2011 01:34:58	0	0	0	0	0
1	MIP_NL__0PNPDE20111105_013356_000044063108_00189_50634_9946.N1	05NOV2011 01:33:56	05NOV2011 02:47:21	0	0	0	0	0
2	MIP_NL__0PNPDE20111105_024648_000061363108_00190_50635_9947.N1	05NOV2011 02:46:48	05NOV2011 04:29:04	0	0	0	0	0
3	MIP_NL__0PNPDE20111105_042828_000060503108_00191_50636_9948.N1	05NOV2011 04:28:28	05NOV2011 06:09:18	0	0	0	0	0
4	MIP_NL__0PNPDK20111105_060844_000041723108_00192_50637_7440.N1	05NOV2011 06:08:44	05NOV2011 07:18:16	0	0	0	0	0
5	MIP_NL__0PNPDK20111105_071718_000061053108_00193_50638_7441.N1	05NOV2011 07:17:18	05NOV2011 08:59:03	0	0	0	0	0
6	MIP_NL__0PNPDK20111105_085741_000060143108_00194_50639_7442.N1	05NOV2011 08:57:41	05NOV2011 10:37:56	0	0	0	0	0
7	MIP_NL__0PNPDK20111105_103615_000059203108_00195_50640_7443.N1	05NOV2011 10:36:15	05NOV2011 12:14:56	0	0	0	0	0
8	MIP_NL__0PNPDK20111105_121309_000060253108_00196_50641_7444.N1	05NOV2011 12:13:09	05NOV2011 13:53:34	0	0	0	0	0
9	MIP_NL__0PNPDK20111105_135217_000060753108_00197_50642_7445.N1	05NOV2011 13:52:17	05NOV2011 15:33:32	0	0	0	0	0
10	MIP_NL__0PNPDK20111105_153154_000059273108_00198_50643_7446.N1	05NOV2011 15:31:54	05NOV2011 17:10:40	0	0	0	0	0
11	MIP_NL__0PNPDK20111105_170948_000058533108_00199_50644_7447.N1	05NOV2011 17:09:48	05NOV2011 18:47:21	0	0	0	0	0
12	MIP_NL__0PNPDK20111105_184619_000059313108_00200_50645_7448.N1	05NOV2011 18:46:19	05NOV2011 20:25:09	0	0	0	0	0
13	MIP_NL__0PNPDE20111105_202358_000044873108_00201_50646_9949.N1	05NOV2011 20:23:58	05NOV2011 21:38:46	0	0	0	0	0
14	MIP_NL__0PNPDE20111105_232003_000060083108_00202_50647_9951.N1	05NOV2011 23:20:03	06NOV2011 01:00:11	0	0	0	0	0

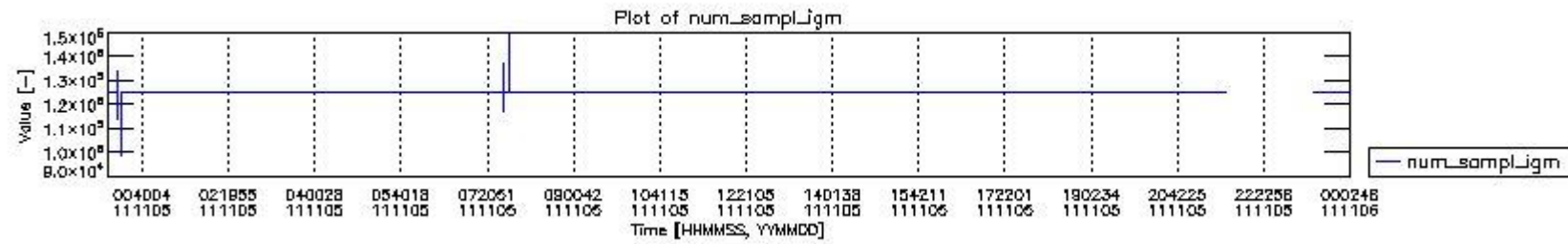
0.2 Instrument Operational Performance Parameters

The following plots give an overview of various instrument parameters for this day. The instrument parameters are part of the auxiliary data field within the source packets of the MIP_NL__0P product. The auxiliary data is normally included twice per interferogram. Note that only the first packet is currently included in monitoring.

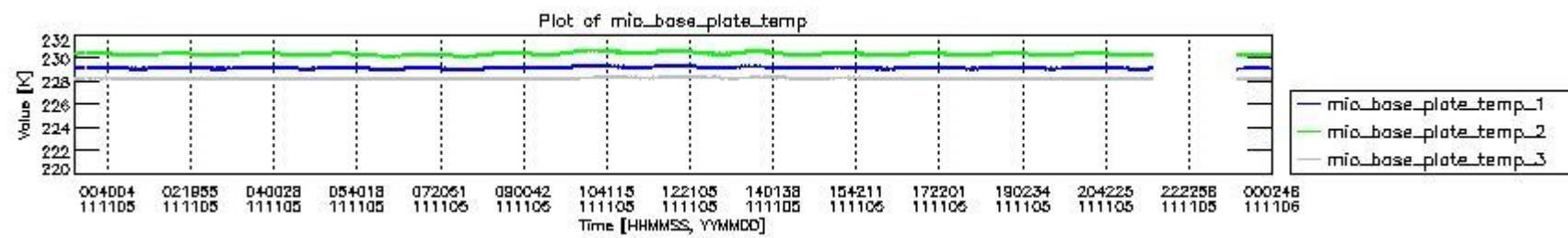
The following table shows the counts of various interferogram number of samples

Number of igm samples	Count [#]	Count [%]
98773	1	0.0025945048
113778	1	0.0025945048
117346	1	0.0025945048

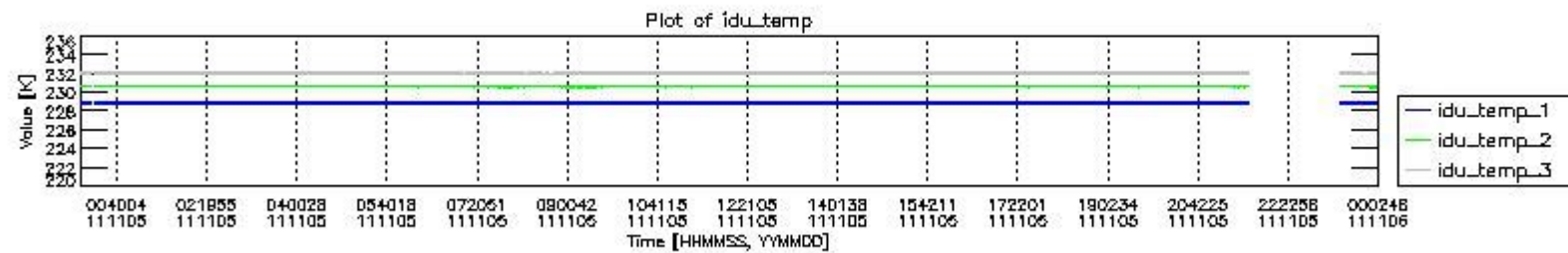
122888	1	0.0025945048
123250	1	0.0025945048
124025	1	0.0025945048
124800	35963	93.306178
124803	2568	6.6626884
127233	1	0.0025945048
130024	1	0.0025945048
133910	1	0.0025945048
137478	1	0.0025945048
147365	1	0.0025945048
149798	1	0.0025945048



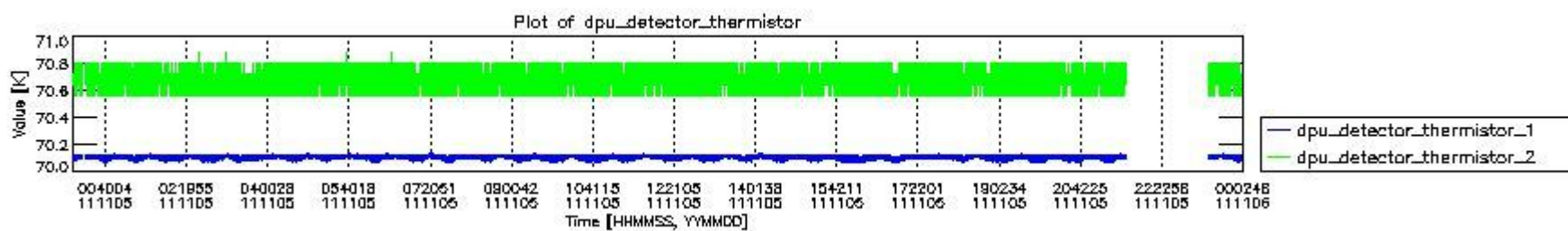
mipas_daily_report_level0_KSPT_L0_4504_N_20111105_0.PNG



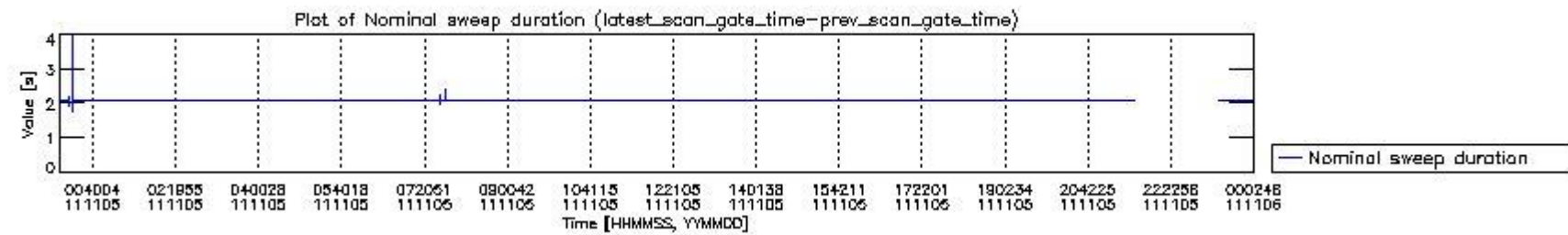
mipas_daily_report_level0_KSPT_L0_4504_N_20111105_1.PNG



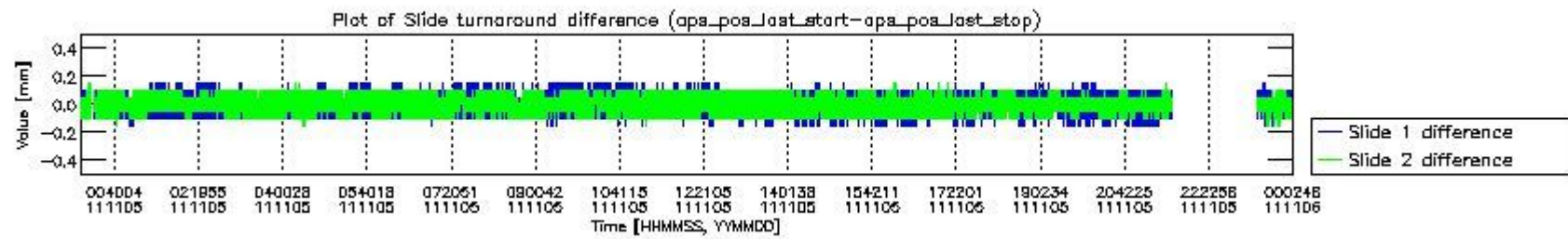
mipas_daily_report_level0_KSPT_L0_4504_N_20111105_2.PNG



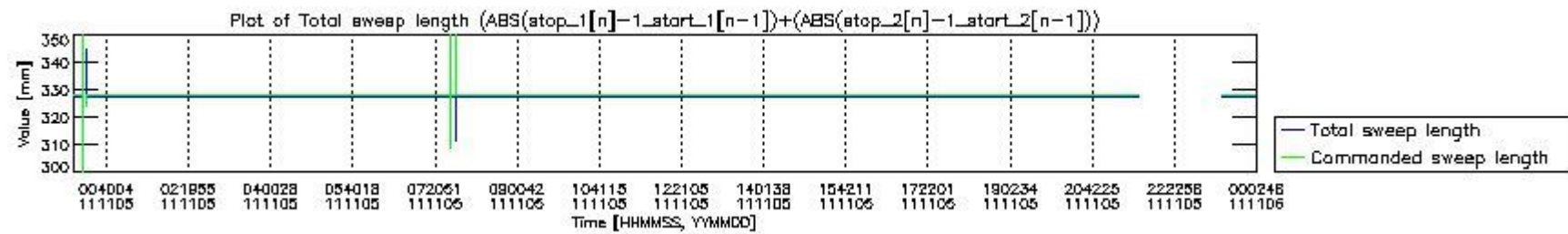
mipas_daily_report_level0_KSPT_L0_4504_N_20111105_3.PNG



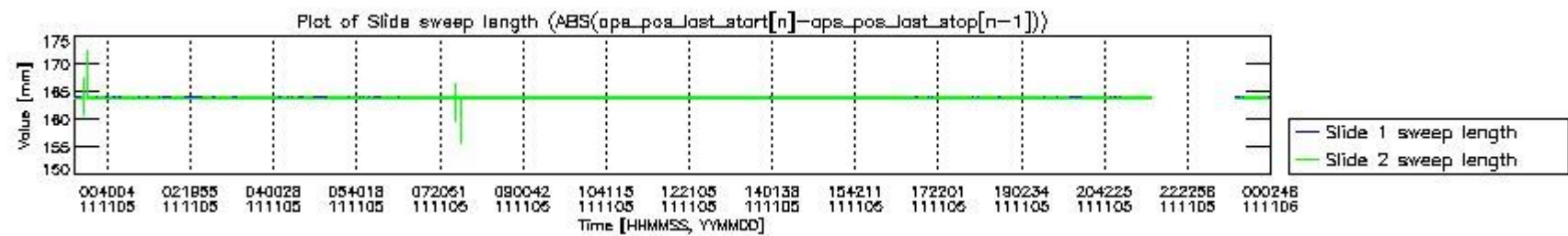
mipas_daily_report_level0_KSPT_L0_4504_N_20111105_4.PNG



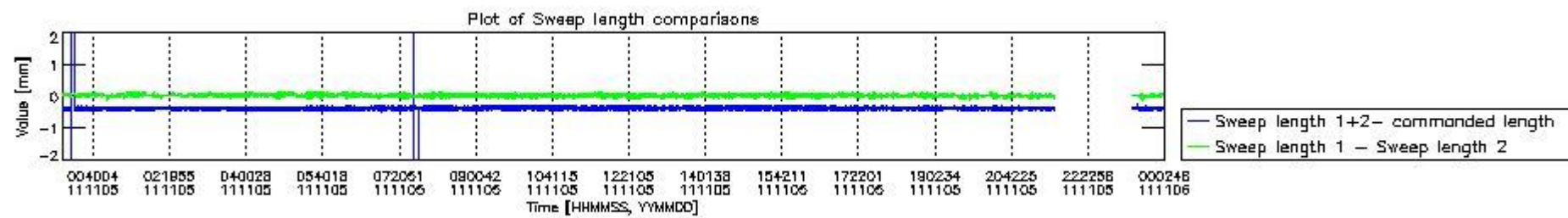
mipas_daily_report_level0_KSPT_L0_4504_N_20111105_5.PNG



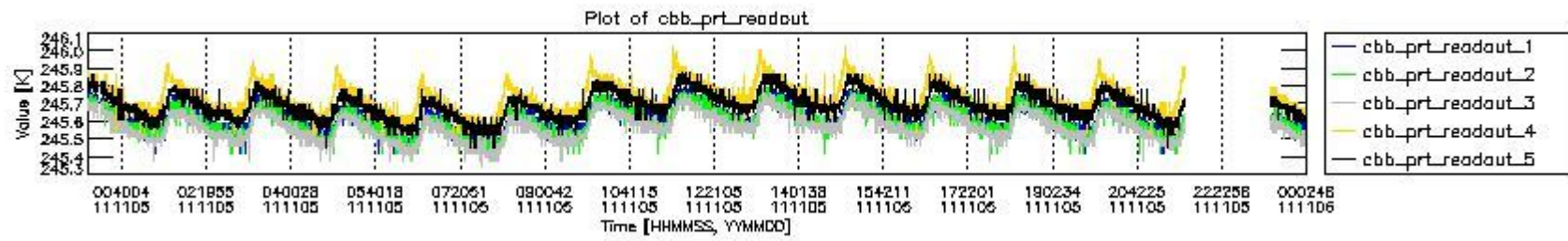
mipas_daily_report_level0_KSPT_L0_4504_N_20111105_6.PNG



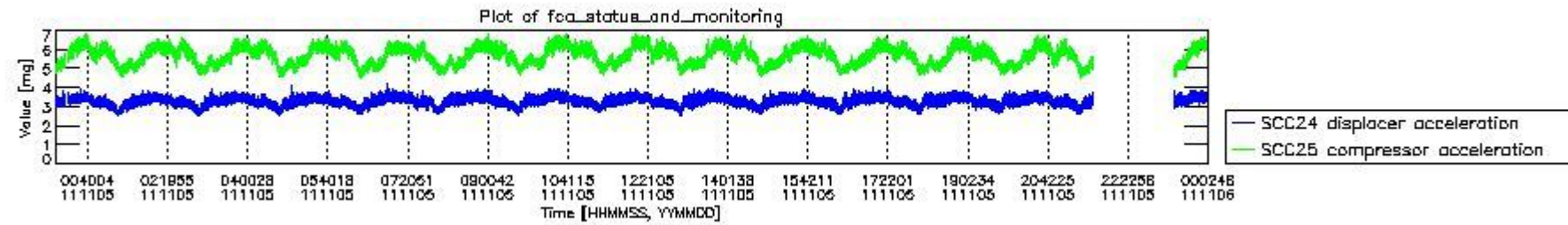
mipas_daily_report_level0_KSPT_L0_4504_N_20111105_7.PNG



mipas_daily_report_level0_KSPT_L0_4504_N_20111105_8.PNG



mipas_daily_report_level0_KSPT_L0_4504_N_20111105_9.PNG

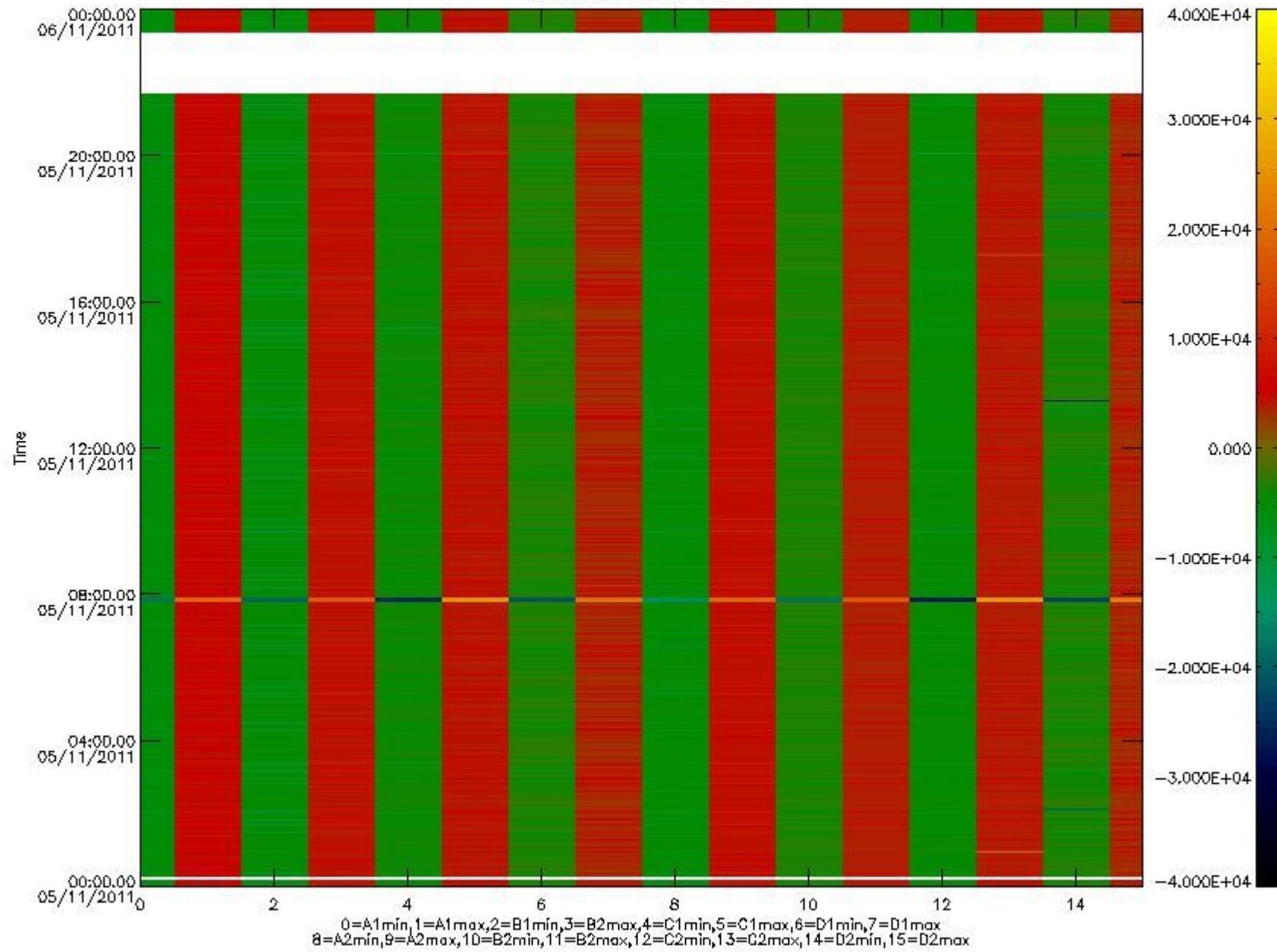


mipas_daily_report_level0_KSPT_L0_4504_N_20111105_10.PNG

The following table shows channel statistics for all channels for this day.

Channel	Min	Max	ADC
A1	-18539	19670	16bit
B1	-20891	17921	16bit
C1	-25838	25750	16bit
D1	-26679	32767	16bit
A2	-16033	19823	16bit
B2	-18879	18518	16bit
C2	-26855	26495	16bit
D2	-32768	23656	16bit

MIPNLOP_MIPSOUPAC_aux_fields_igm_cal, channel statistics plot
Colour indicates value.



mipas_daily_report_level0_KSPT_L0_4504_N_20111105_11.PNG

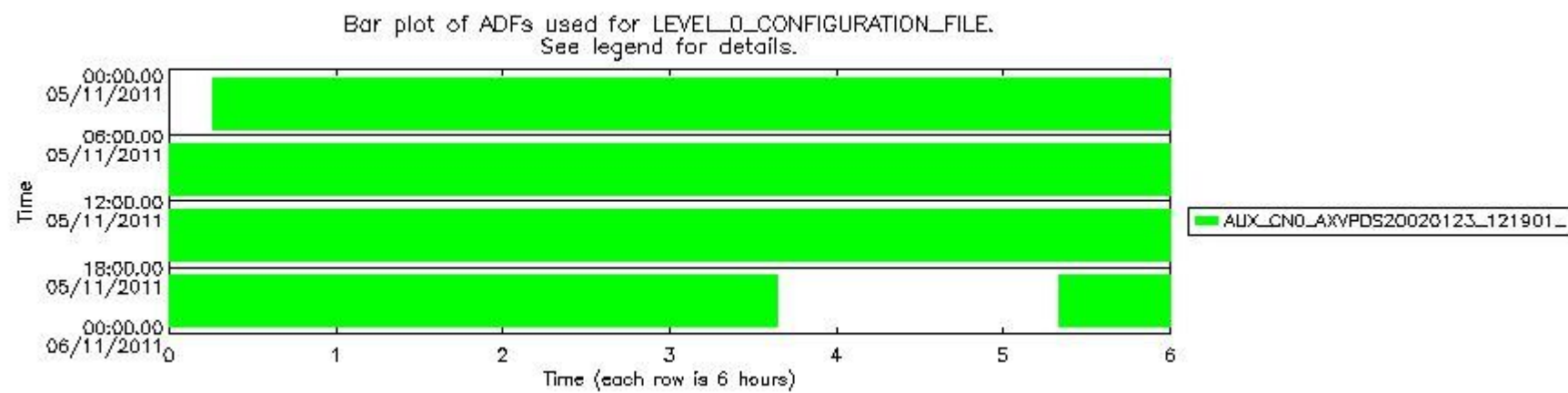
0.3 ADF monitoring

The use of ADFs is shown in two ways:

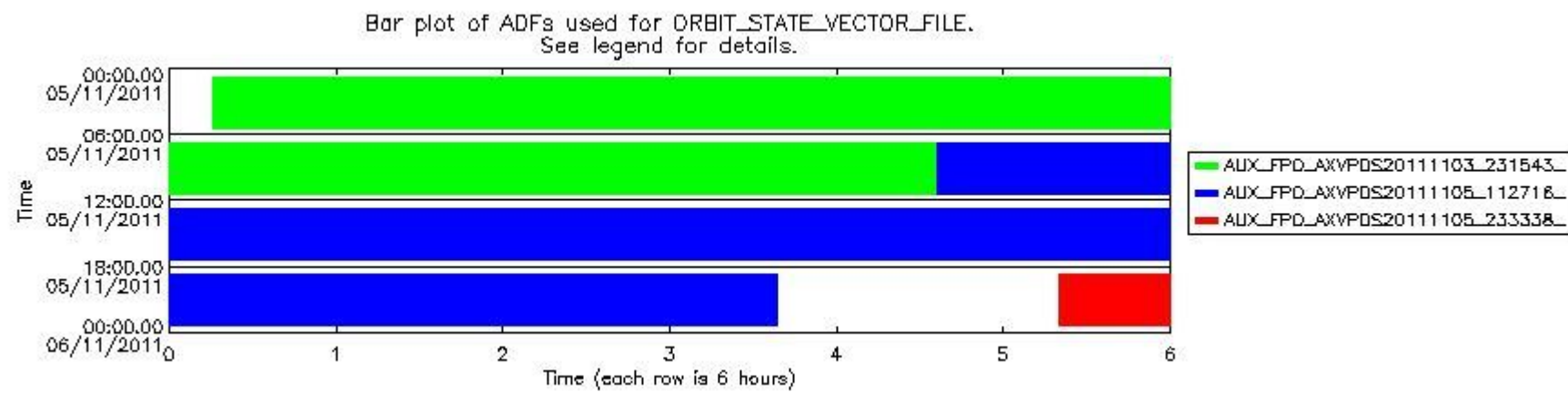
1. By means of two tables that can be used to find the ADF used for a specific product.
2. By means of plots that show changes in ADF using colours.

Number	ADF
0	AUX_CN0_AXVPDS20020123_121901_20020101_000000_20200101_000000
1	AUX_FPO_AXVPDS20111103_231543_20111103_194347_20111113_201715
2	AUX_FPO_AXVPDS20111105_112716_20111104_190703_20111114_212045
3	AUX_FPO_AXVPDS20111105_233338_20111105_114922_20111115_140304

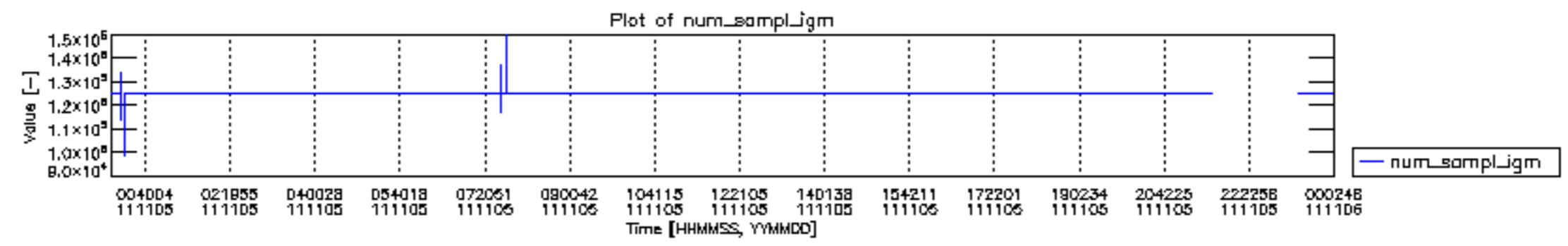
Number	Product name	#CNO	#FPO
0	MIP_NL__0PNPDE20111105_001535_000047633108_00189_50634_9945.N1	0	1
1	MIP_NL__0PNPDE20111105_013356_000044063108_00189_50634_9946.N1	0	1
2	MIP_NL__0PNPDE20111105_024648_000061363108_00190_50635_9947.N1	0	1
3	MIP_NL__0PNPDE20111105_042828_000060503108_00191_50636_9948.N1	0	1
4	MIP_NL__0PNPDK20111105_060844_000041723108_00192_50637_7440.N1	0	1
5	MIP_NL__0PNPDK20111105_071718_000061053108_00193_50638_7441.N1	0	1
6	MIP_NL__0PNPDK20111105_085741_000060143108_00194_50639_7442.N1	0	1
7	MIP_NL__0PNPDK20111105_103615_000059203108_00195_50640_7443.N1	0	2
8	MIP_NL__0PNPDK20111105_121309_000060253108_00196_50641_7444.N1	0	2
9	MIP_NL__0PNPDK20111105_135217_000060753108_00197_50642_7445.N1	0	2
10	MIP_NL__0PNPDK20111105_153154_000059273108_00198_50643_7446.N1	0	2
11	MIP_NL__0PNPDK20111105_170948_000058533108_00199_50644_7447.N1	0	2
12	MIP_NL__0PNPDK20111105_184619_000059313108_00200_50645_7448.N1	0	2
13	MIP_NL__0PNPDE20111105_202358_000044873108_00201_50646_9949.N1	0	2
14	MIP_NL__0PNPDE20111105_232003_000060083108_00202_50647_9951.N1	0	3

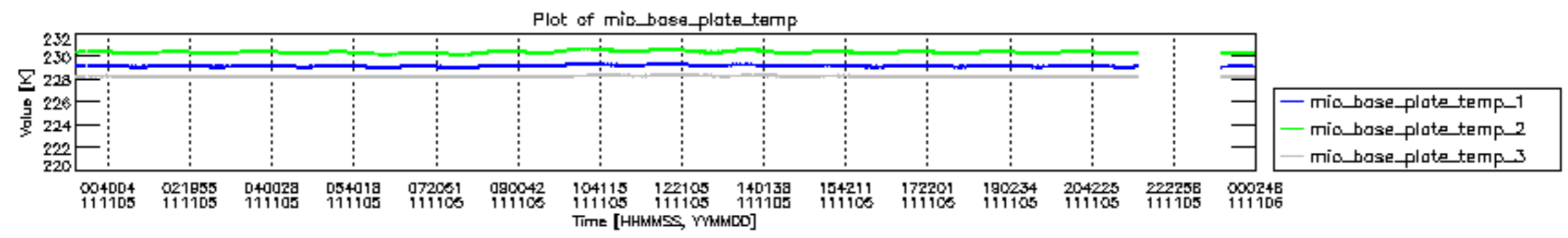


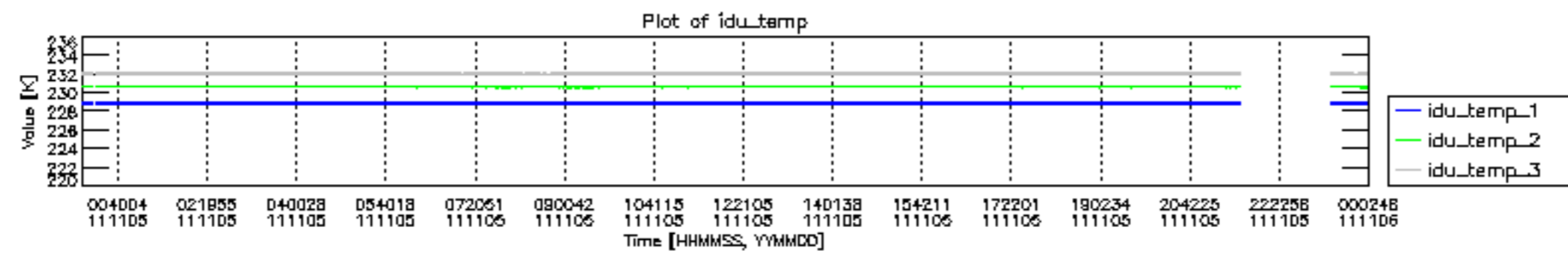
mipas_daily_report_level0_KSPT_L0_4504_N_20111105_12.PNG

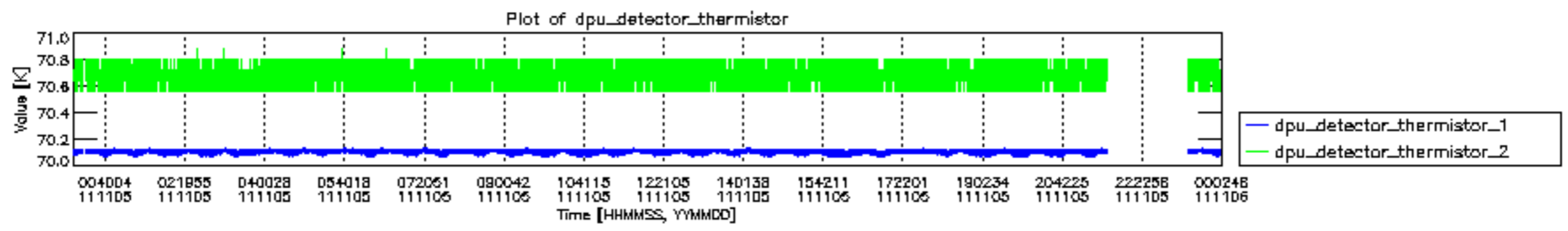


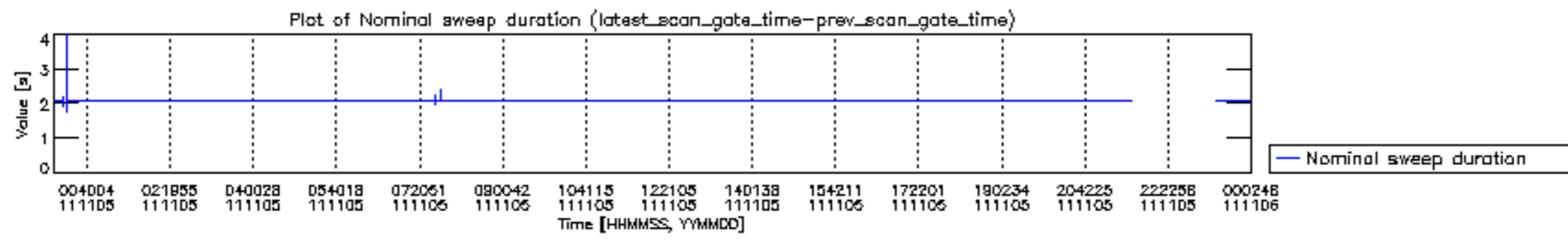
mipas_daily_report_level0_KSPT_L0_4504_N_20111105_13.PNG

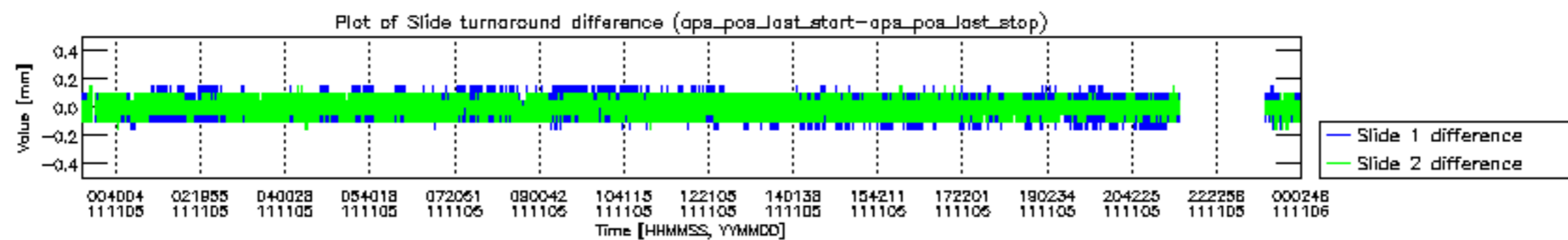


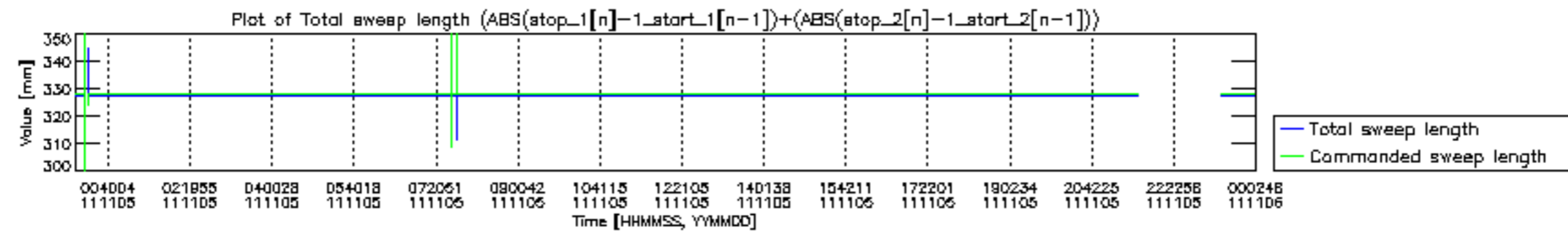


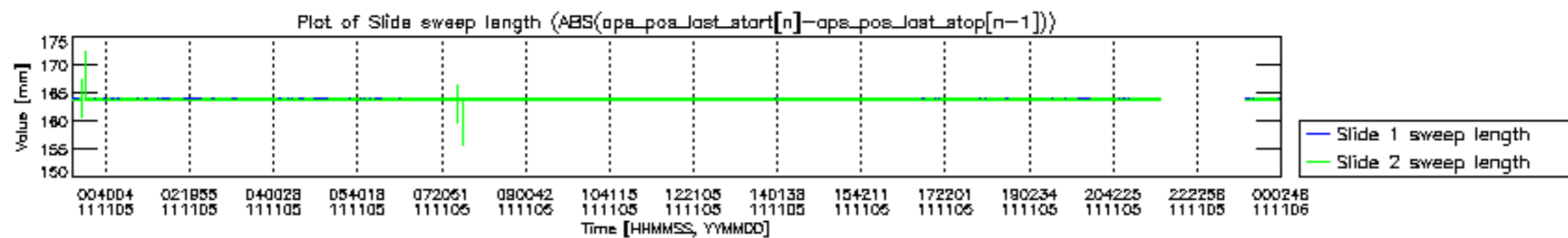


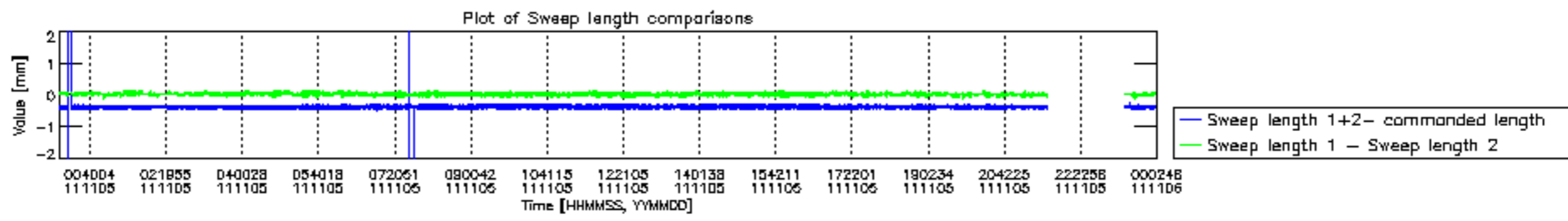


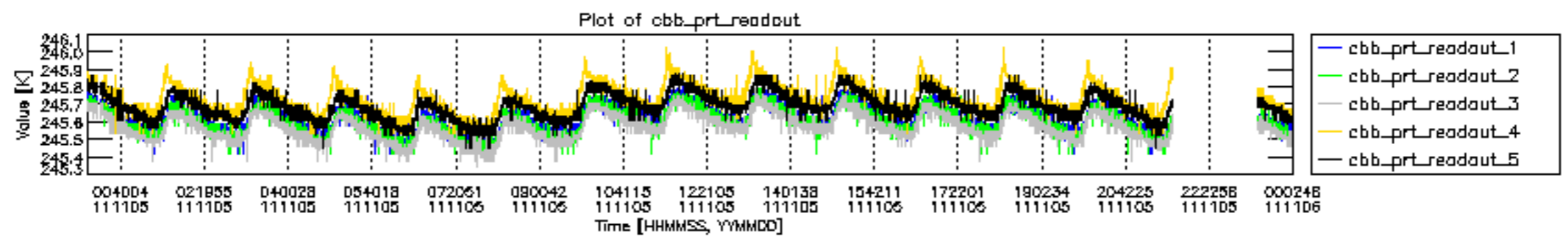


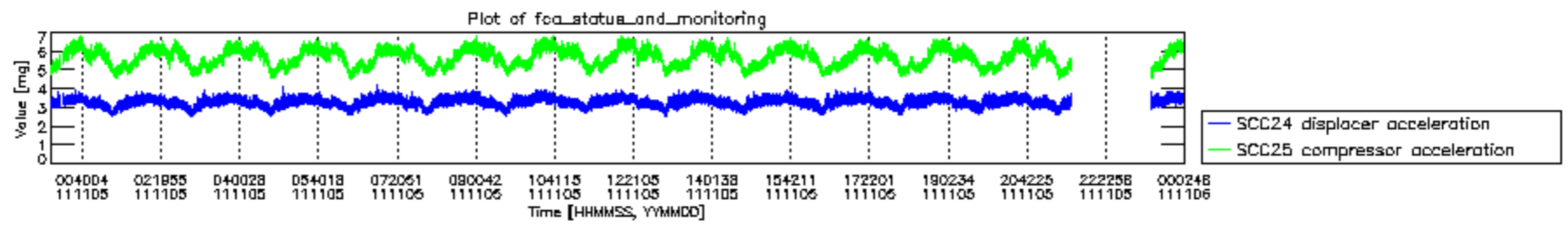












MIPNLOP_MIPSOUPAC_aux_fields_igm_cal, channel statistics plot
 Colour indicates value.

