

0. MIPAS Daily Report for level 0 products

[0.1 General Info](#)

[0.2 Instrument Operational Performance Parameters](#)

[0.3 ADF monitoring](#)

0.1 General Info

This report contains a daily analysis on parameters extracted from MIPAS level 0 data (The MIP_NL__0P product).

0.1.1 Report summary

The table below shows general characteristics of the data that are included into this report.

Item	Value
Report version	v1.6 08-11-2010
Time of report generation	24OCT2011 05:24:18
Data source version	KSPT_L0/4504-N
Processing scope for products	19OCT2011 00:00:00 to 20OCT2011 00:00:00
Start time of first product within scope	19OCT2011 09:45:14
Stop time of last product within scope	20OCT2011 01:23:36
Total number of level 0 products	10
Number of level 0 products with errors	0

0.1.2 Product Quality Indicators per product

The following table shows a summary for each product used in this report.

#	Product name	Start time	Stop time	Prod err	ISP err sign	ISP miss sign	ISP disc sign	rs sign
0	MIP_NL__0PNPDK20111019_094514_000045253107_00381_50395_7277.N1	19OCT2011 09:45:14	19OCT2011 11:00:39	0	0	0	0	0
1	MIP_NL__0PNPDK20111019_105905_000060203107_00382_50396_7278.N1	19OCT2011 10:59:05	19OCT2011 12:39:26	0	0	0	0	0
2	MIP_NL__0PNPDK20111019_123750_000060563107_00383_50397_7279.N1	19OCT2011 12:37:50	19OCT2011 14:18:45	0	0	0	0	0
3	MIP_NL__0PNPDK20111019_141810_000058093107_00384_50398_7283.N1	19OCT2011 14:18:10	19OCT2011 15:54:59	0	0	0	0	0
4	MIP_NL__0PNPDK20111019_155340_000059643107_00385_50399_7280.N1	19OCT2011 15:53:40	19OCT2011 17:33:04	0	0	0	0	0
5	MIP_NL__0PNPDK20111019_173216_000059683107_00386_50400_7281.N1	19OCT2011 17:32:16	19OCT2011 19:11:44	0	0	0	0	0
6	MIP_NL__0PNPDK20111019_191046_000059413107_00387_50401_7282.N1	19OCT2011 19:10:46	19OCT2011 20:49:47	0	0	0	0	0
7	MIP_NL__0PNPDE20111019_204808_000044123107_00388_50402_9826.N1	19OCT2011 20:48:08	19OCT2011 22:01:40	0	0	0	0	0
8	MIP_NL__0PNPDE20111019_220033_000062253107_00388_50402_9827.N1	19OCT2011 22:00:33	19OCT2011 23:44:19	0	0	0	0	0
9	MIP_NL__0PNPDE20111019_234318_000060183107_00389_50403_9828.N1	19OCT2011 23:43:18	20OCT2011 01:23:36	0	0	0	0	0

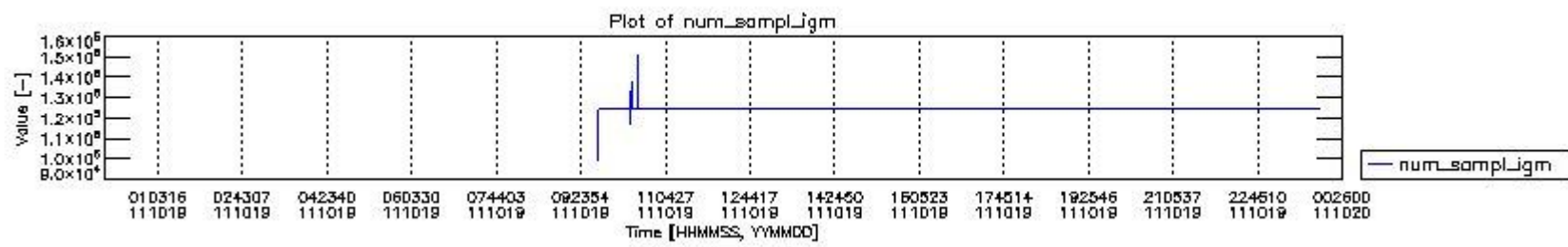
0.2 Instrument Operational Performance Parameters

The following plots give an overview of various instrument parameters for this day. The instrument parameters are part of the auxiliary data field within the source packets of the MIP_NL__0P product. The auxiliary data is normally included twice per interferogram. Note that only the first packet is currently included in monitoring.

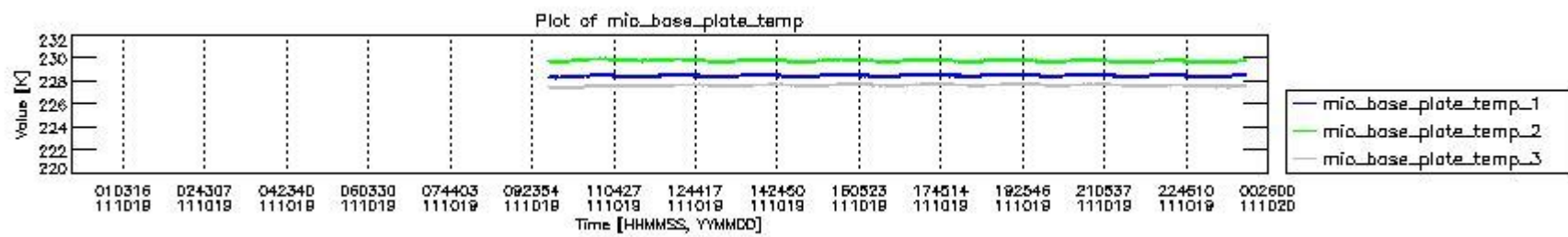
The following table shows the counts of various interferogram number of samples

Number of igm samples	Count [#]	Count [%]
99145	1	0.0040731538
117495	1	0.0040731538
123994	1	0.0040731538
124397	1	0.0040731538
124800	22810	92.908639
124803	1732	7.0547025
127605	1	0.0040731538
130322	1	0.0040731538

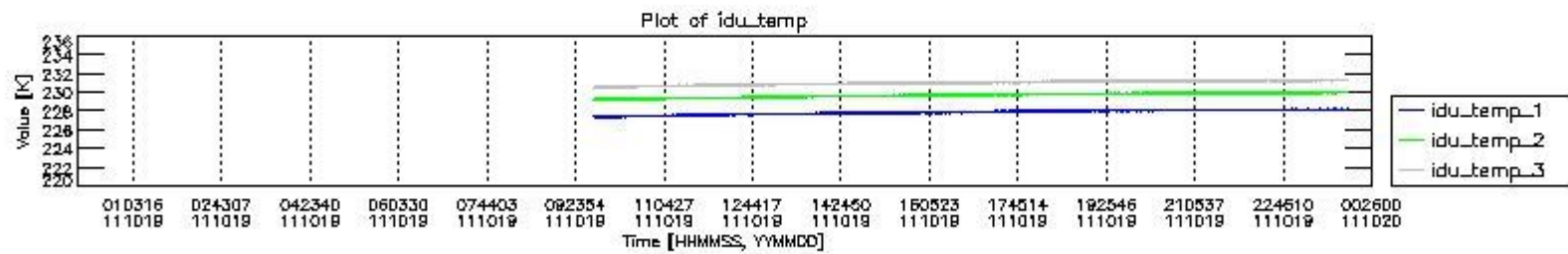
137627	1	0.0040731538
147737	1	0.0040731538
150542	1	0.0040731538



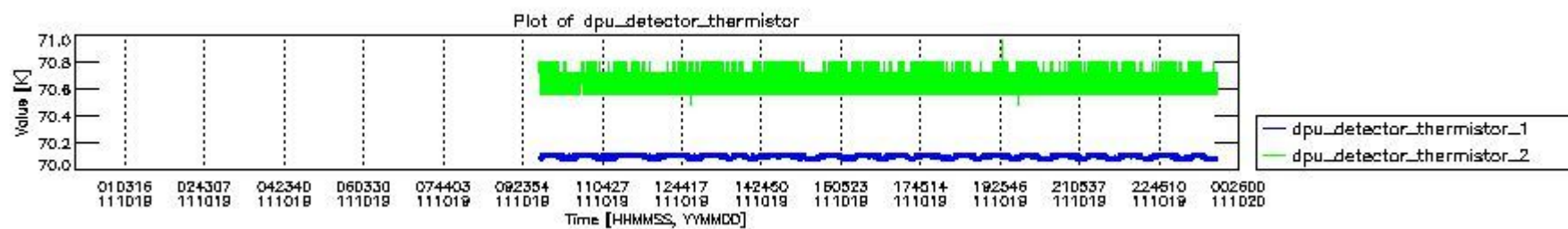
mipas_daily_report_level0_KSPT_L0_4504_N_20111019_0.PNG



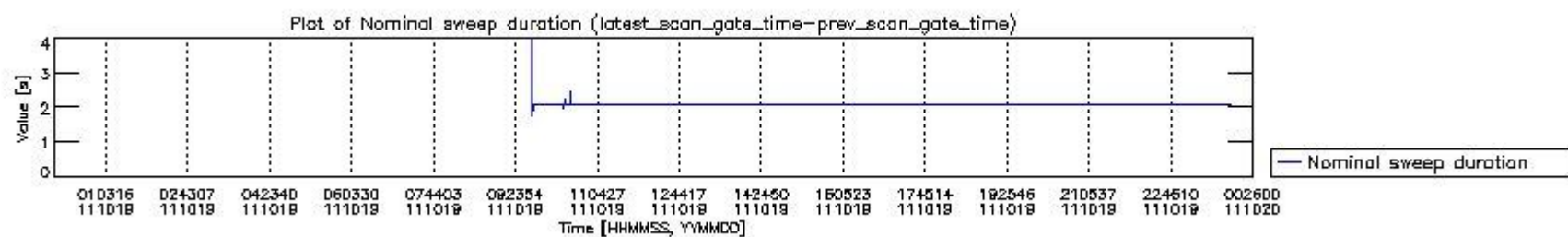
mipas_daily_report_level0_KSPT_L0_4504_N_20111019_1.PNG



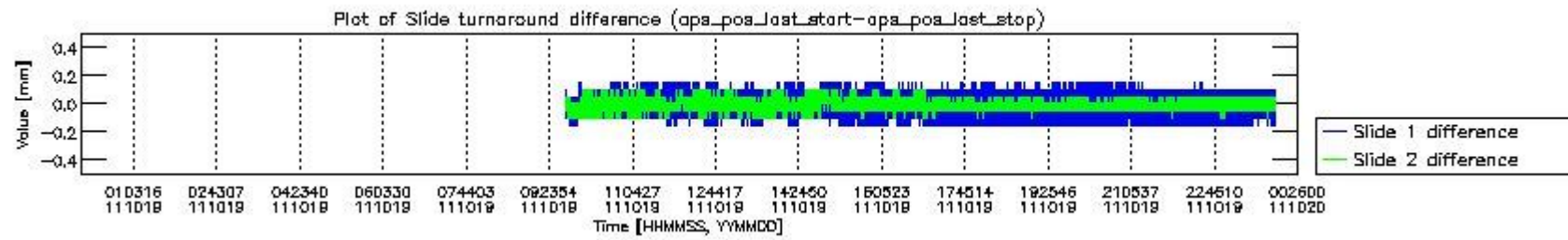
mipas_daily_report_level0_KSPT_L0_4504_N_20111019_2.PNG



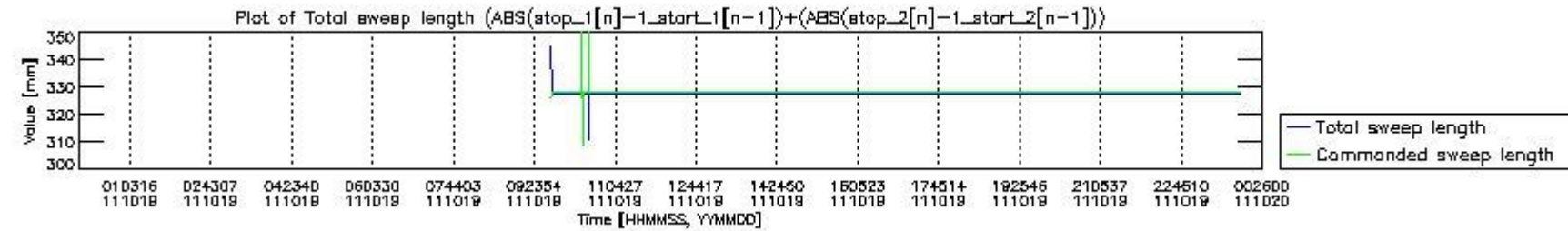
mipas_daily_report_level0_KSPT_L0_4504_N_20111019_3.PNG



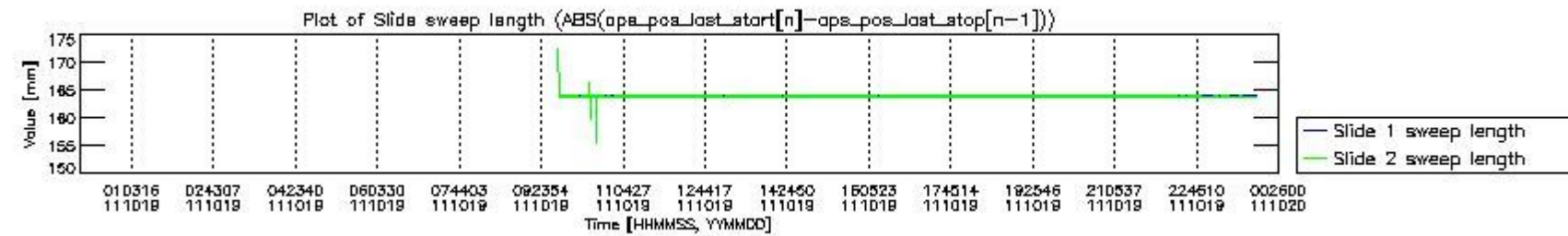
mipas_daily_report_level0_KSPT_L0_4504_N_20111019_4.PNG



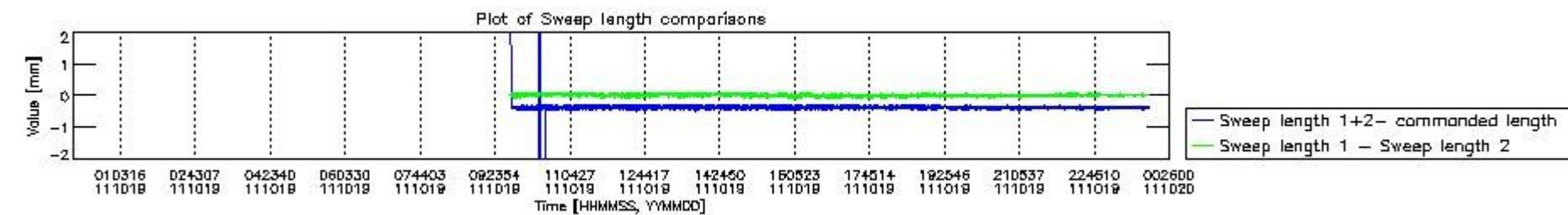
mipas_daily_report_level0_KSPT_L0_4504_N_20111019_5.PNG



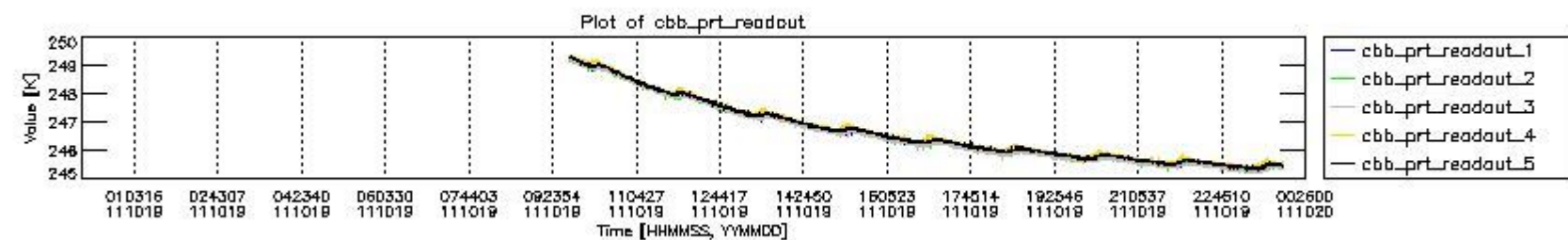
mipas_daily_report_level0_KSPT_L0_4504_N_20111019_6.PNG



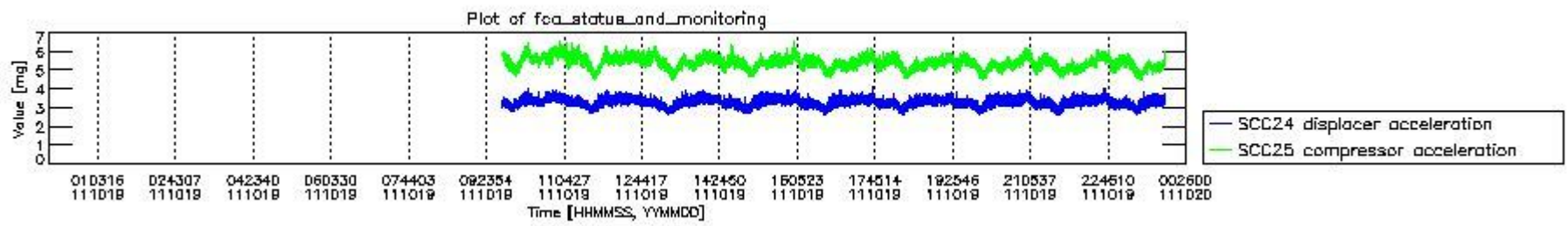
mipas_daily_report_level0_KSPT_L0_4504_N_20111019_7.PNG



mipas_daily_report_level0_KSPT_L0_4504_N_20111019_8.PNG



mipas_daily_report_level0_KSPT_L0_4504_N_20111019_9.PNG

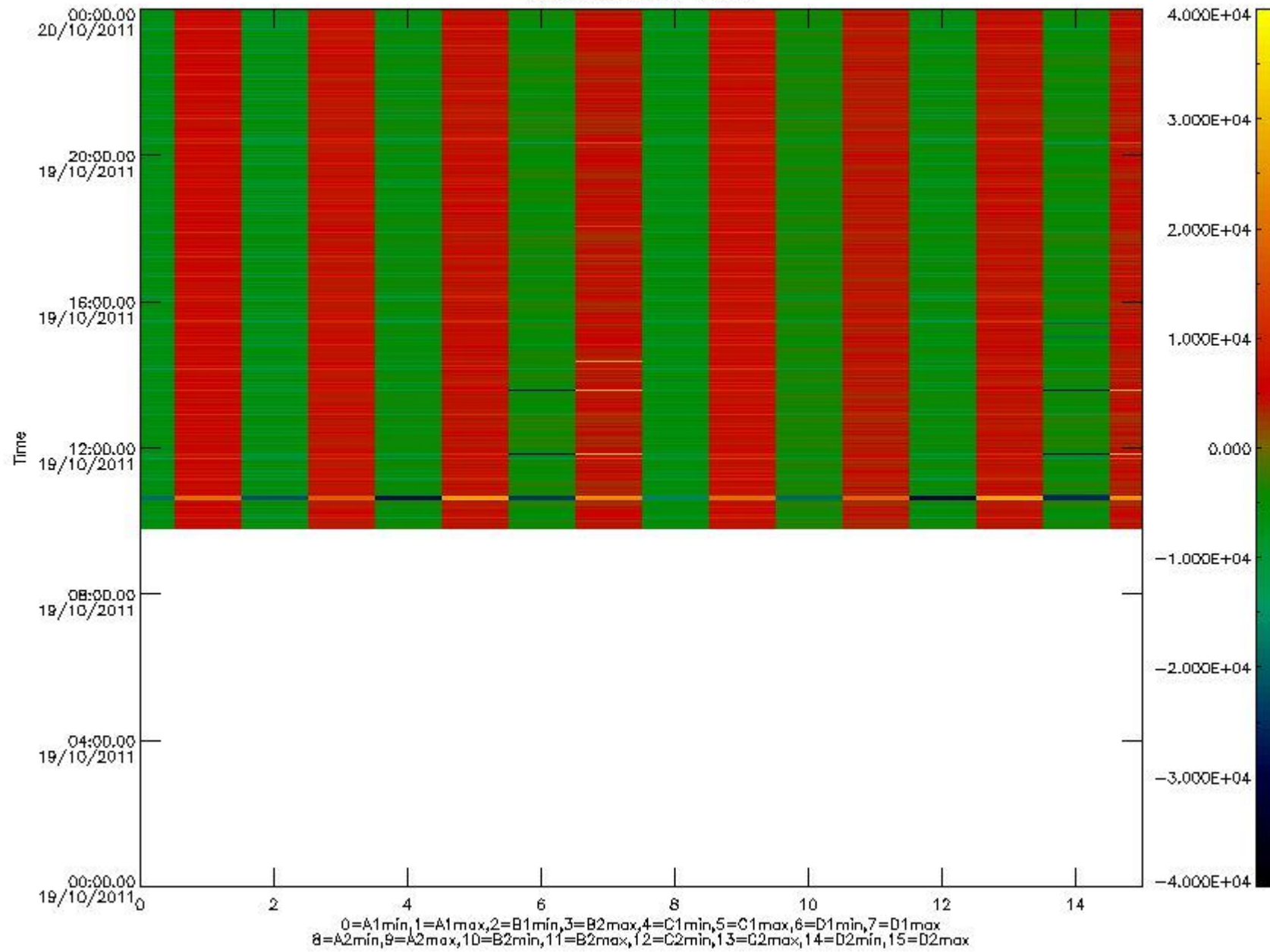


mipas_daily_report_level0_KSPT_L0_4504_N_20111019_10.PNG

The following table shows channel statistics for all channels for this day.

Channel	Min	Max	ADC
A1	-19331	20752	16bit
B1	-21998	18886	16bit
C1	-28604	28393	16bit
D1	-32768	32767	16bit
A2	-16609	20832	16bit
B2	-19818	19483	16bit
C2	-29783	29281	16bit
D2	-32768	32767	16bit

MIPNLOP_MIPSOUPAC_aux_fields_1gm_cal, channel statistics plot
Colour indicates value.



mipas_daily_report_level0_KSPT_L0_4504_N_20111019_11.PNG

0.3 ADF monitoring

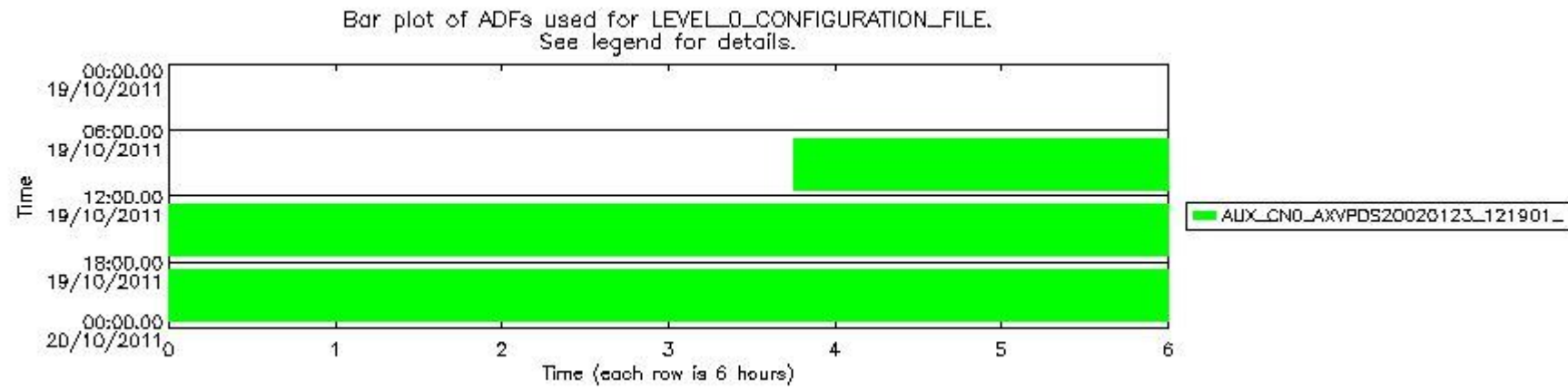
The use of ADFs is shown in two ways:

1. By means of two tables that can be used to find the ADF used for a specific product.
2. By means of plots that show changes in ADF using colours.

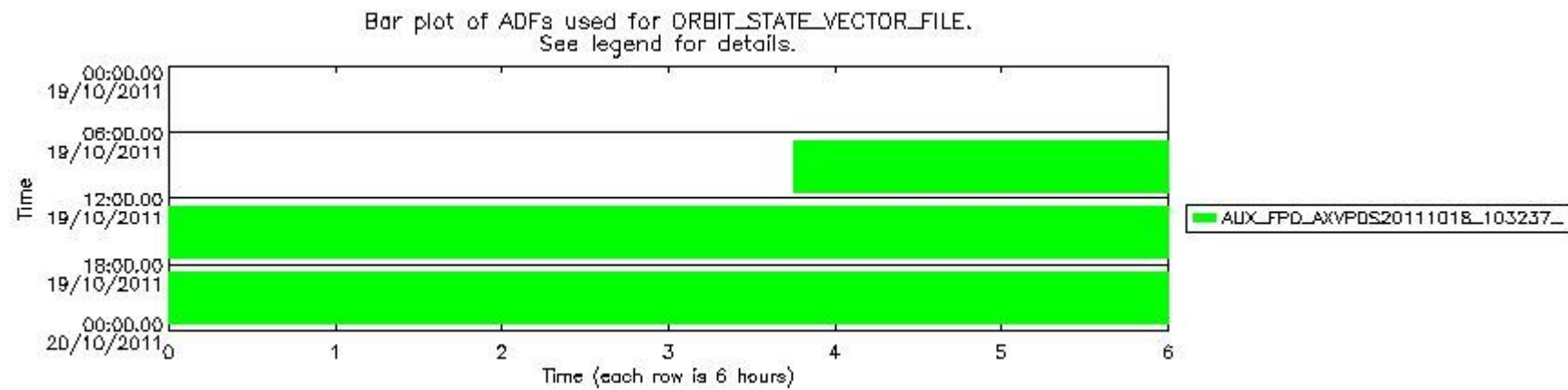
Number	ADF
0	AUX_CN0_AXVPDS20020123_121901_20020101_000000_20200101_000000
1	AUX_FPO_AXVPDS20111018_103237_20111017_182648_20111027_204032

Number	Product name	#CN0	#FPO
0	MIP_NL_0PNPDK20111019_094514_000045253107_00381_50395_7277.N1	0	1

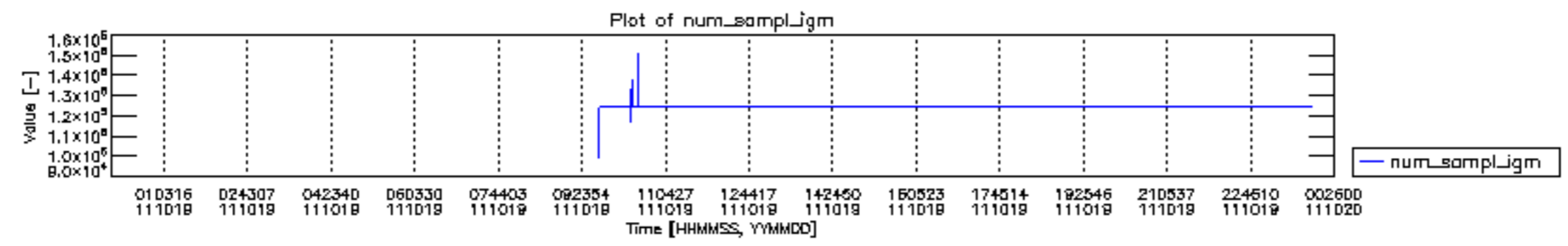
1	MIP_NL__0PNPDK20111019_105905_000060203107_00382_50396_7278.N1	0	1
2	MIP_NL__0PNPDK20111019_123750_000060563107_00383_50397_7279.N1	0	1
3	MIP_NL__0PNPDK20111019_141810_000058093107_00384_50398_7283.N1	0	1
4	MIP_NL__0PNPDK20111019_155340_000059643107_00385_50399_7280.N1	0	1
5	MIP_NL__0PNPDK20111019_173216_000059683107_00386_50400_7281.N1	0	1
6	MIP_NL__0PNPDK20111019_191046_000059413107_00387_50401_7282.N1	0	1
7	MIP_NL__0PNPDE20111019_204808_000044123107_00388_50402_9826.N1	0	1
8	MIP_NL__0PNPDE20111019_220033_000062253107_00388_50402_9827.N1	0	1
9	MIP_NL__0PNPDE20111019_234318_000060183107_00389_50403_9828.N1	0	1

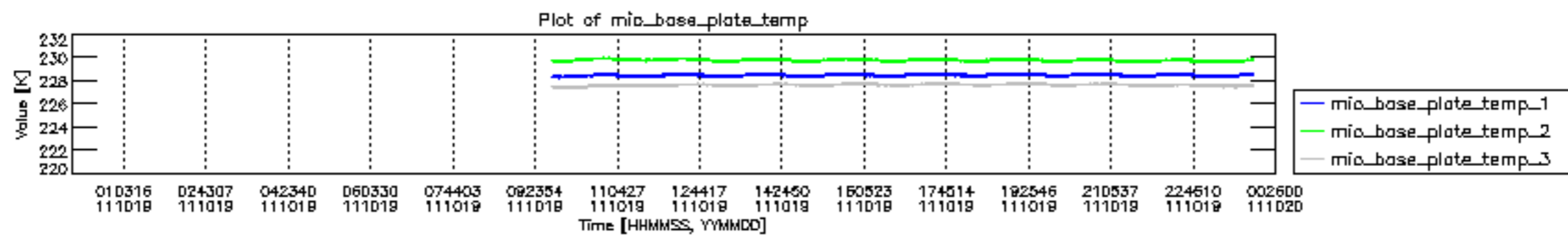


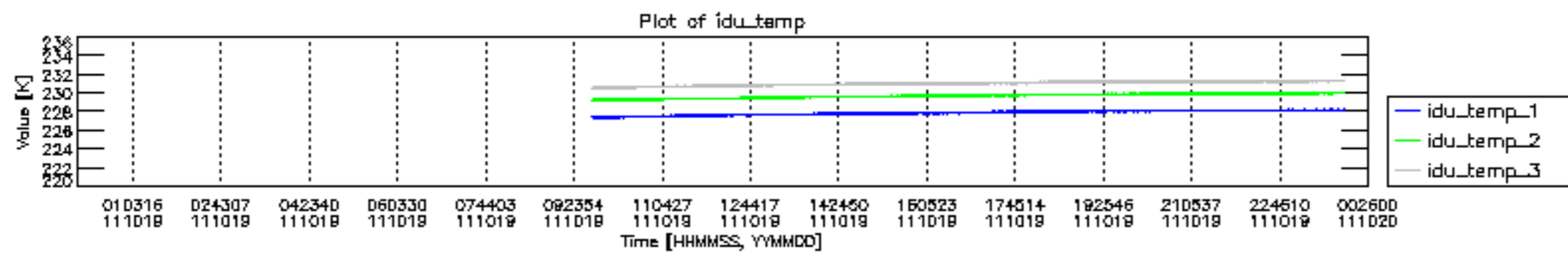
mipas_daily_report_level0_KSPT_L0_4504_N_20111019_12.PNG

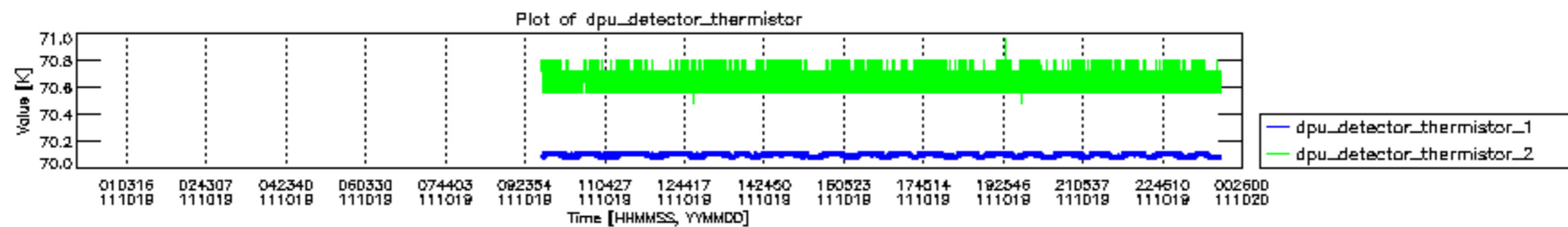


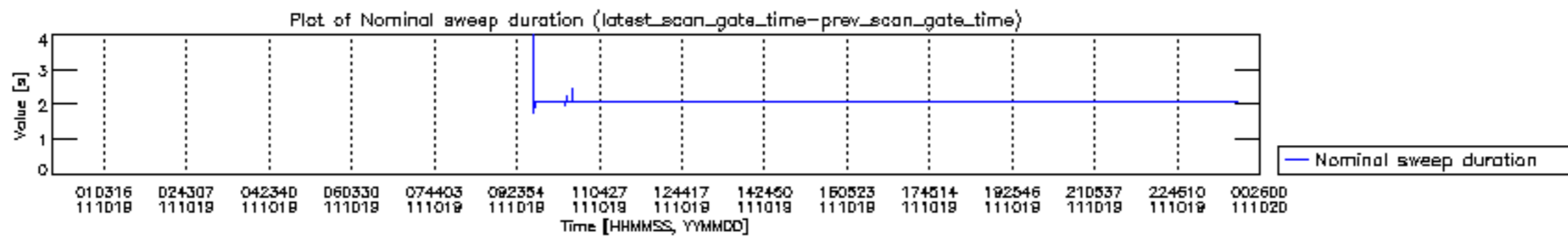
mipas_daily_report_level0_KSPT_L0_4504_N_20111019_13.PNG

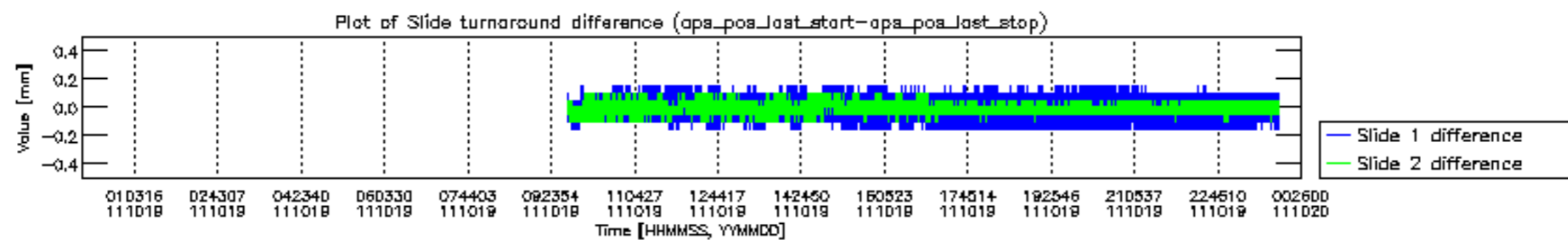


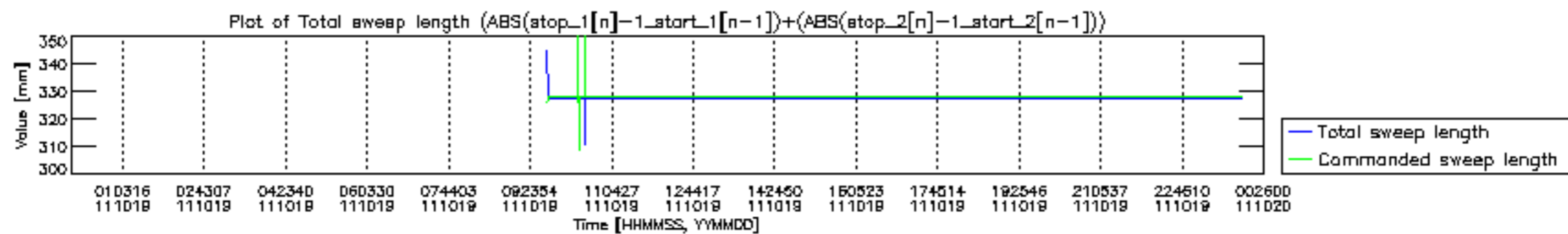


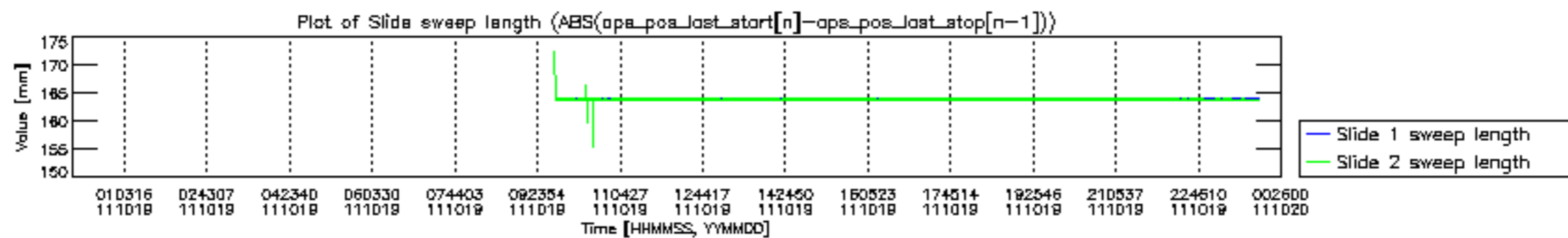


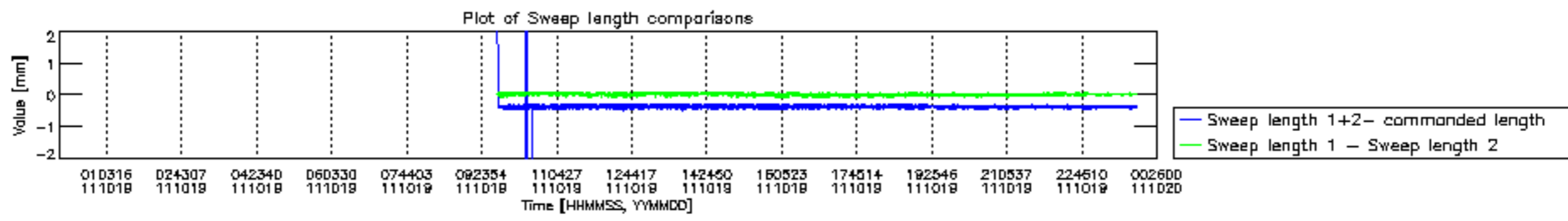


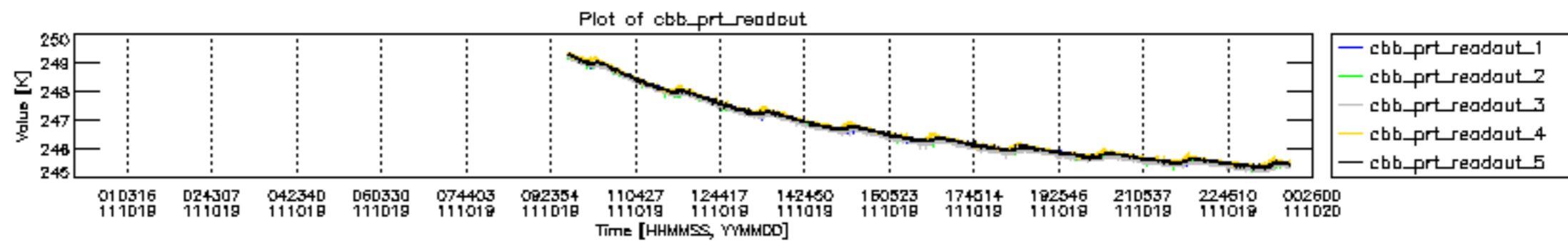


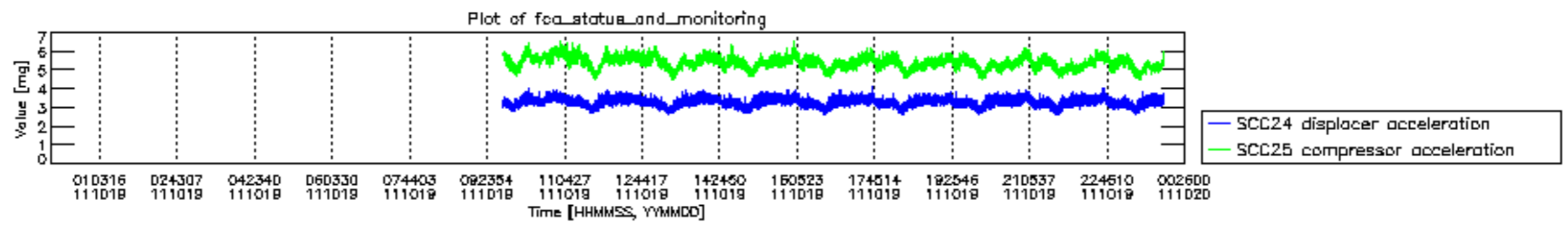












MIPNLOP_MIPSOUPAC_aux_fields_igm_cal, channel statistics plot
 Colour indicates value.

