

## 0. MIPAS Daily Report for level 0 products

### [0.1 General Info](#)

### [0.2 Instrument Operational Performance Parameters](#)

### [0.3 ADF monitoring](#)

## 0.1 General Info

This report contains a daily analysis on parameters extracted from MIPAS level 0 data (The MIP\_NL\_\_0P product).

### 0.1.1 Report summary

The table below shows general characteristics of the data that are included into this report.

Item	Value
Report version	v1.6 08-11-2010
Time of report generation	15OCT2011 05:20:12
Data source version	KSPT_L0/4504-N
Processing scope for products	10OCT2011 00:00:00 to 11OCT2011 00:00:00
Start time of first product within scope	10OCT2011 00:48:40
Stop time of last product within scope	11OCT2011 00:12:50
Total number of level 0 products	15
Number of level 0 products with errors	1

### 0.1.2 Product Quality Indicators per product

The following table shows a summary for each product used in this report.

#	Product name	Start time	Stop time	Prod err	ISP err sign	ISP miss sign	ISP disc sign	rs sign
0	MIP_NL__0PNPDE20111010_004840_000057973107_00246_50260_9807.N1	10OCT2011 00:48:40	10OCT2011 02:25:17	0	0	0	0	0
1	MIP_NL__0PNPDE20111010_022419_000045963107_00247_50261_9808.N1	10OCT2011 02:24:19	10OCT2011 03:40:55	0	0	0	0	0
2	MIP_NL__0PNPDE20111010_034021_000061253107_00248_50262_9809.N1	10OCT2011 03:40:21	10OCT2011 05:22:26	0	0	0	0	0
3	MIP_NL__0PNPDE20111010_052153_000060853107_00249_50263_9810.N1	10OCT2011 05:21:53	10OCT2011 07:03:18	0	0	0	0	0
4	MIP_NL__0PNPDK20111010_070245_000040383107_00250_50264_7258.N1	10OCT2011 07:02:45	10OCT2011 08:10:03	0	0	0	0	0
5	MIP_NL__0PNPDK20111010_080906_000061743107_00251_50265_7259.N1	10OCT2011 08:09:06	10OCT2011 09:52:01	0	0	0	0	0
6	MIP_NL__0PNPDK20111010_095119_000060043107_00252_50266_7260.N1	10OCT2011 09:51:19	10OCT2011 11:31:23	0	0	0	0	0
7	MIP_NL__0PNPDK20111010_112955_000056493107_00253_50267_7261.N1	10OCT2011 11:29:55	10OCT2011 13:04:04	1	1	0	0	0
8	MIP_NL__0PNPDK20111010_131525_000052143107_00254_50268_7262.N1	10OCT2011 13:15:25	10OCT2011 14:42:19	0	0	0	0	0
9	MIP_NL__0PNPDK20111010_145307_000054503107_00255_50269_7263.N1	10OCT2011 14:53:07	10OCT2011 16:23:57	0	0	0	0	0
10	MIP_NL__0PNPDK20111010_162301_000059623107_00256_50270_7264.N1	10OCT2011 16:23:01	10OCT2011 18:02:23	0	0	0	0	0
11	MIP_NL__0PNPDK20111010_180126_000059623107_00257_50271_7265.N1	10OCT2011 18:01:26	10OCT2011 19:40:48	0	0	0	0	0
12	MIP_NL__0PNPDK20111010_193937_000061023107_00258_50272_7266.N1	10OCT2011 19:39:37	10OCT2011 21:21:19	0	0	0	0	0
13	MIP_NL__0PNPDE20111010_212011_000043313107_00259_50273_9811.N1	10OCT2011 21:20:11	10OCT2011 22:32:21	0	0	0	0	0
14	MIP_NL__0PNPDE20111010_223118_000060923107_00259_50273_9812.N1	10OCT2011 22:31:18	11OCT2011 00:12:50	0	0	0	0	0

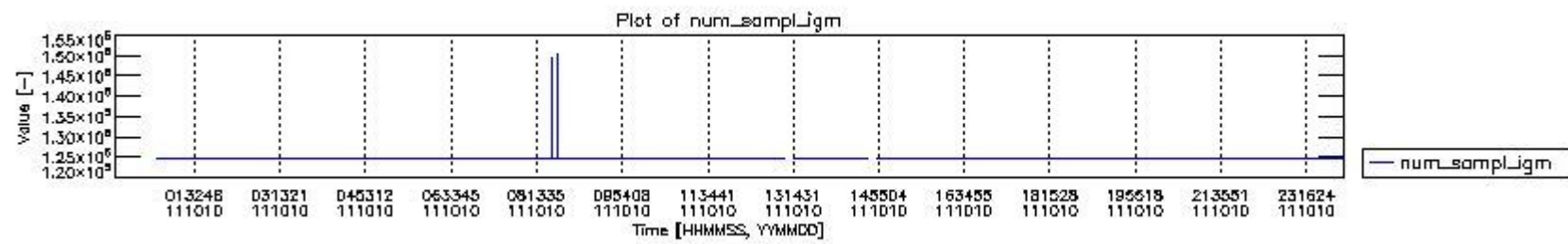
## 0.2 Instrument Operational Performance Parameters

The following plots give an overview of various instrument parameters for this day. The instrument parameters are part of the auxiliary data field within the source packets of the MIP\_NL\_\_0P product. The auxiliary data is normally included twice per interferogram. Note that only the first packet is currently included in monitoring.

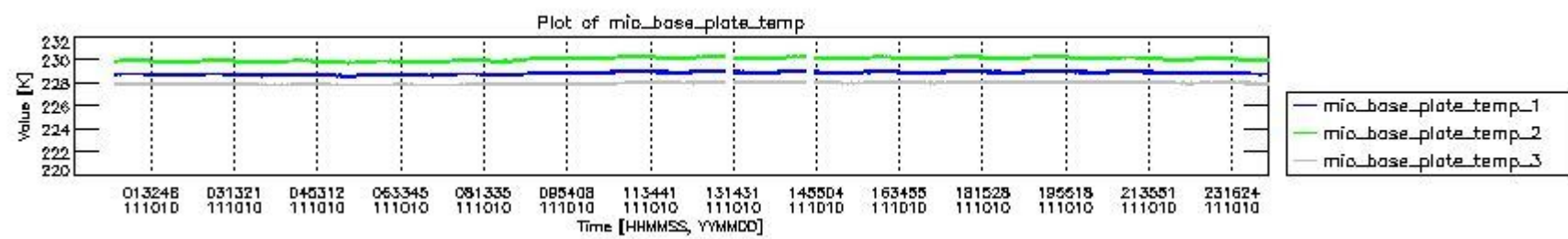
The following table shows the counts of various interferogram number of samples

Number of igm samples	Count [#]	Count [%]
124800	36704	92.893298
124803	2802	7.0915165
127010	1	0.0025308767

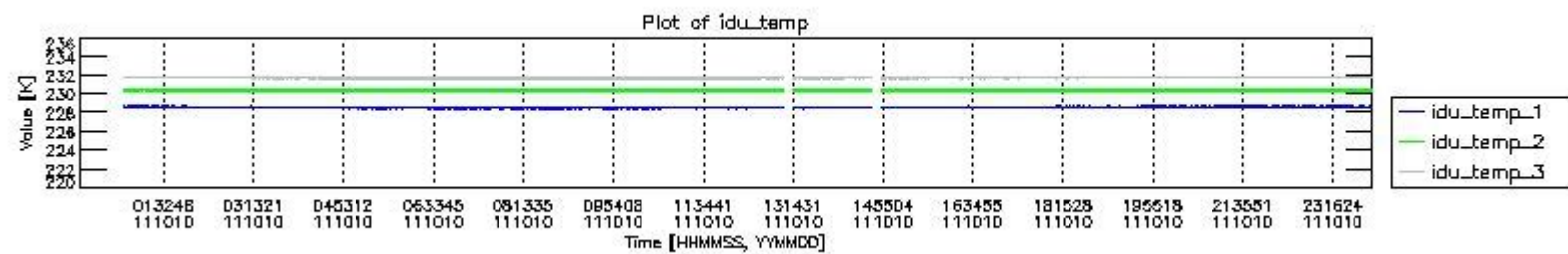
127456	1	0.0025308767
147142	1	0.0025308767
147588	1	0.0025308767
149352	1	0.0025308767
150244	1	0.0025308767



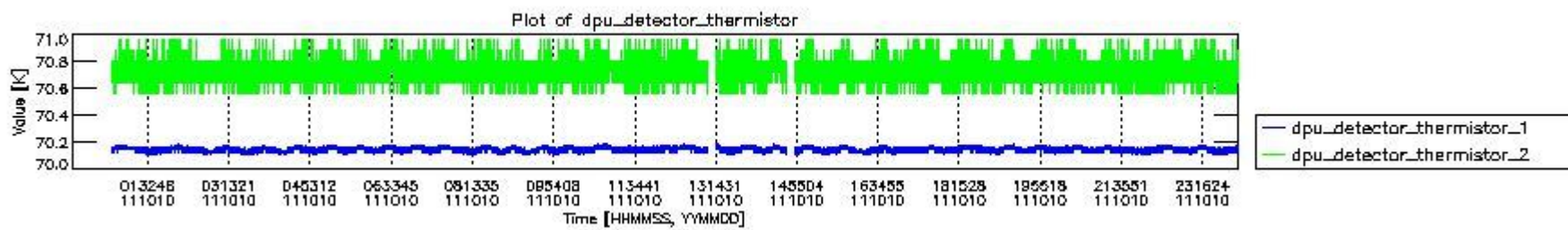
mipas\_daily\_report\_level0\_KSPT\_L0\_4504\_N\_20111010\_0.PNG



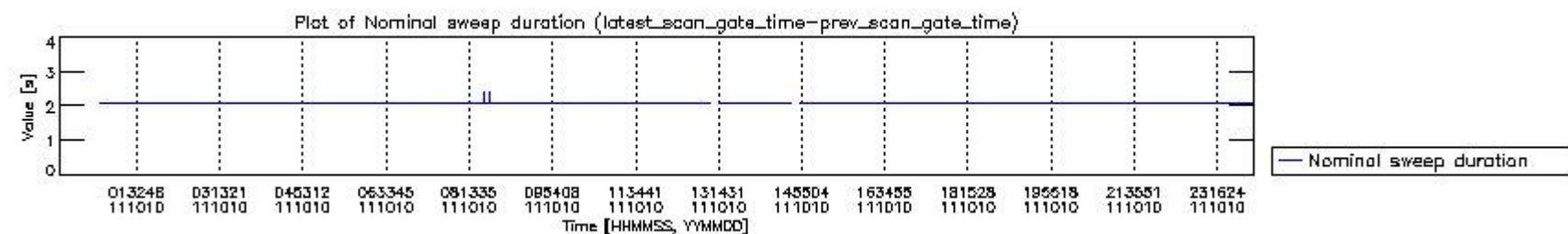
mipas\_daily\_report\_level0\_KSPT\_L0\_4504\_N\_20111010\_1.PNG



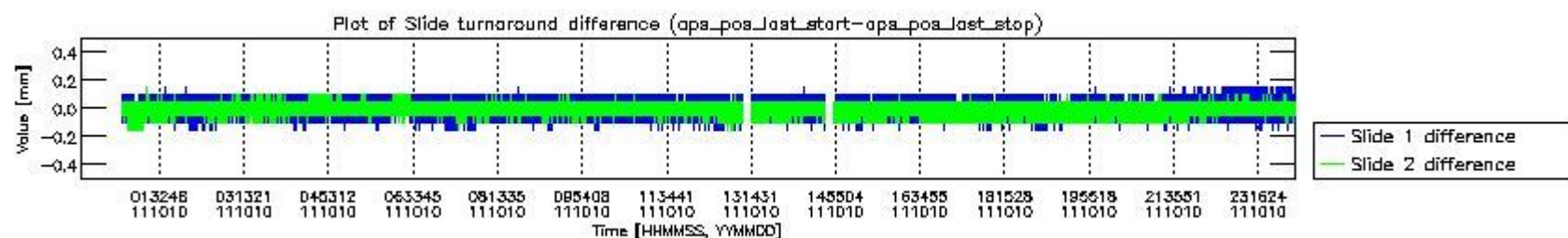
mipas\_daily\_report\_level0\_KSPT\_L0\_4504\_N\_20111010\_2.PNG



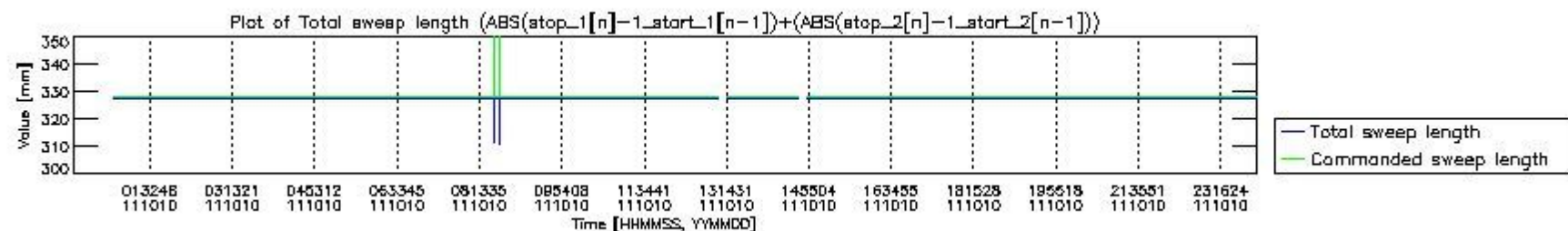
mipas\_daily\_report\_level0\_KSPT\_L0\_4504\_N\_20111010\_3.PNG



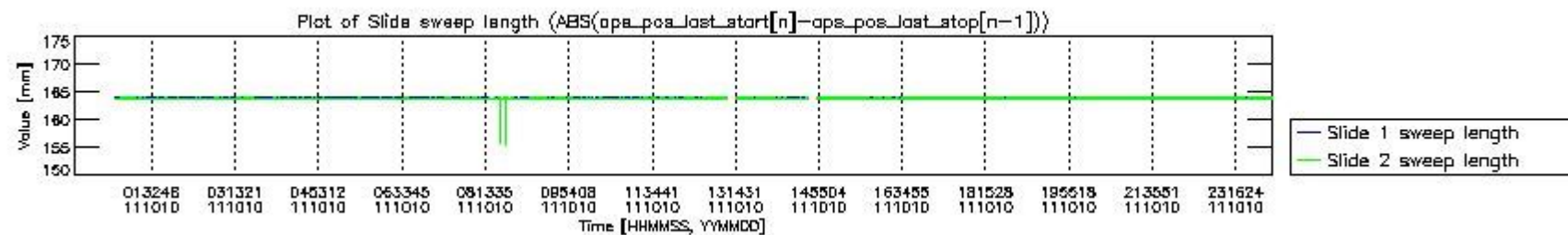
mipas\_daily\_report\_level0\_KSPT\_L0\_4504\_N\_20111010\_4.PNG



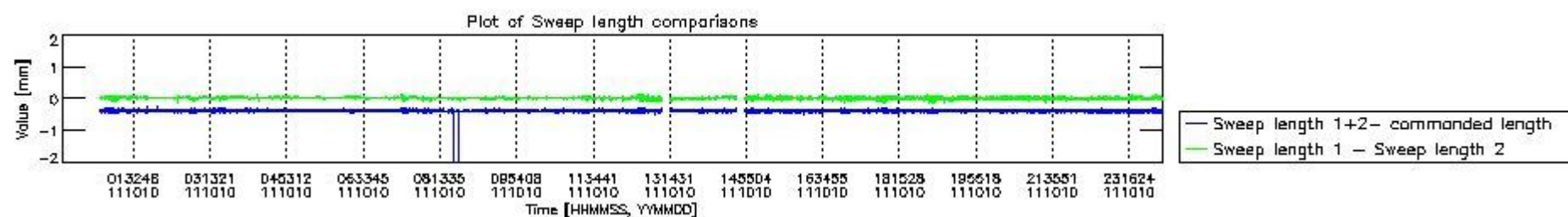
mipas\_daily\_report\_level0\_KSPT\_L0\_4504\_N\_20111010\_5.PNG



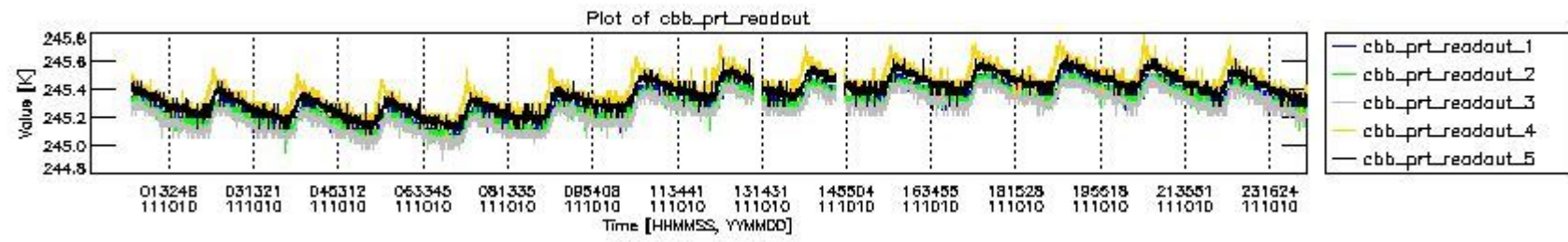
mipas\_daily\_report\_level0\_KSPT\_L0\_4504\_N\_20111010\_6.PNG



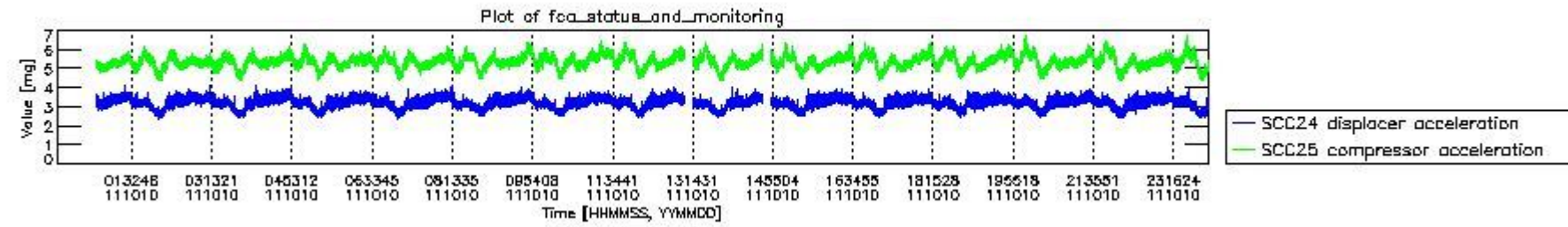
mipas\_daily\_report\_level0\_KSPT\_L0\_4504\_N\_20111010\_7.PNG



mipas\_daily\_report\_level0\_KSPT\_L0\_4504\_N\_20111010\_8.PNG



mipas\_daily\_report\_level0\_KSPT\_L0\_4504\_N\_20111010\_9.PNG



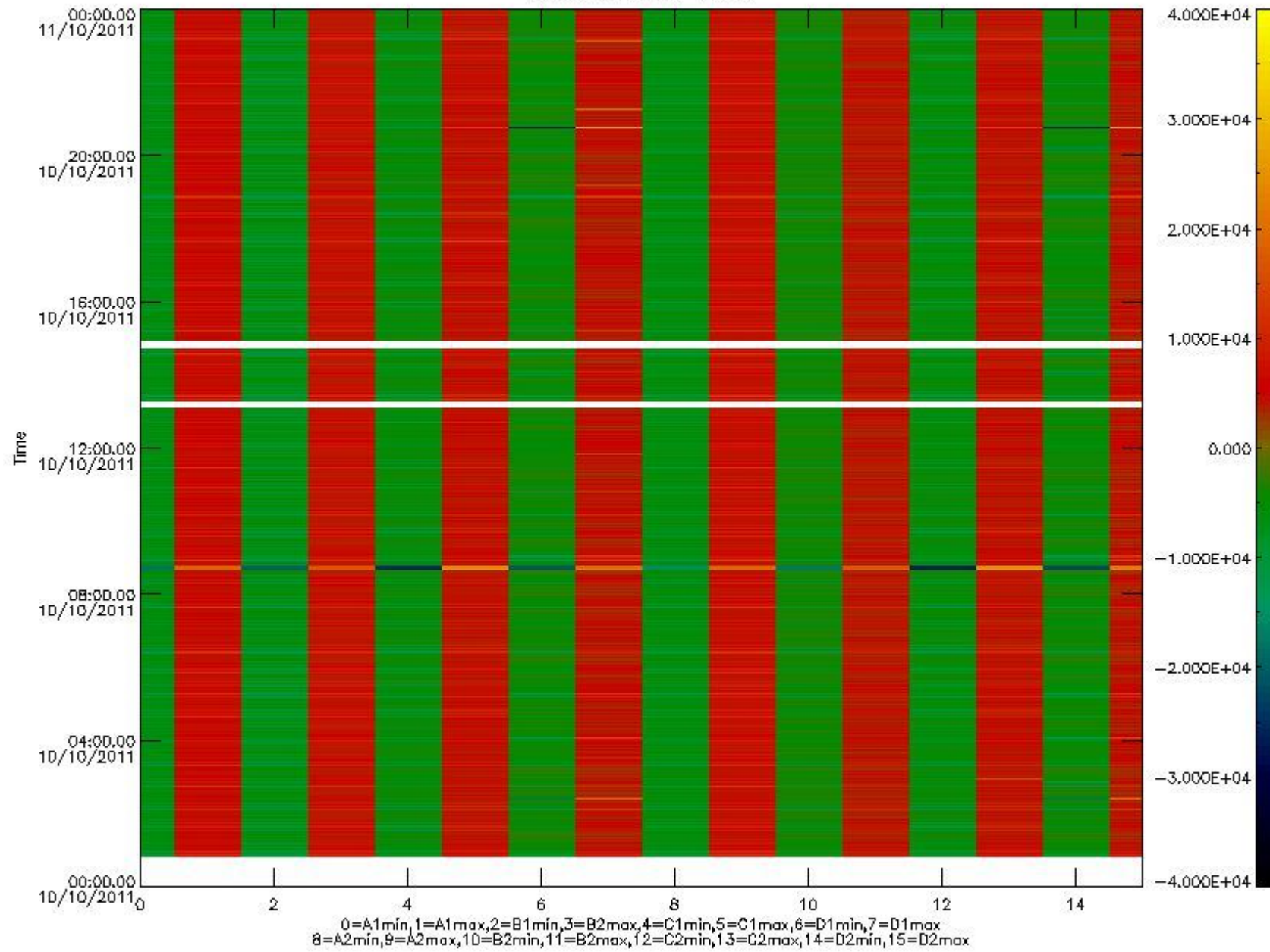
mipas\_daily\_report\_level0\_KSPT\_L0\_4504\_N\_20111010\_10.PNG

The following table shows channel statistics for all channels for this day.

Channel	Min	Max	ADC
A1	-18056	19145	16bit
B1	-20443	17591	16bit
C1	-25159	25082	16bit
D1	-32768	32767	16bit
A2	-15717	19404	16bit
B2	-18403	18109	16bit
C2	-26231	25845	16bit
D2	-32768	32767	16bit



MIPNLOP\_MIPSOUPAC\_aux\_fields\_igm\_cal, channel statistics plot  
Colour indicates value.



mipas\_daily\_report\_level0\_KSPT\_L0\_4504\_N\_20111010\_11.PNG

### 0.3 ADF monitoring

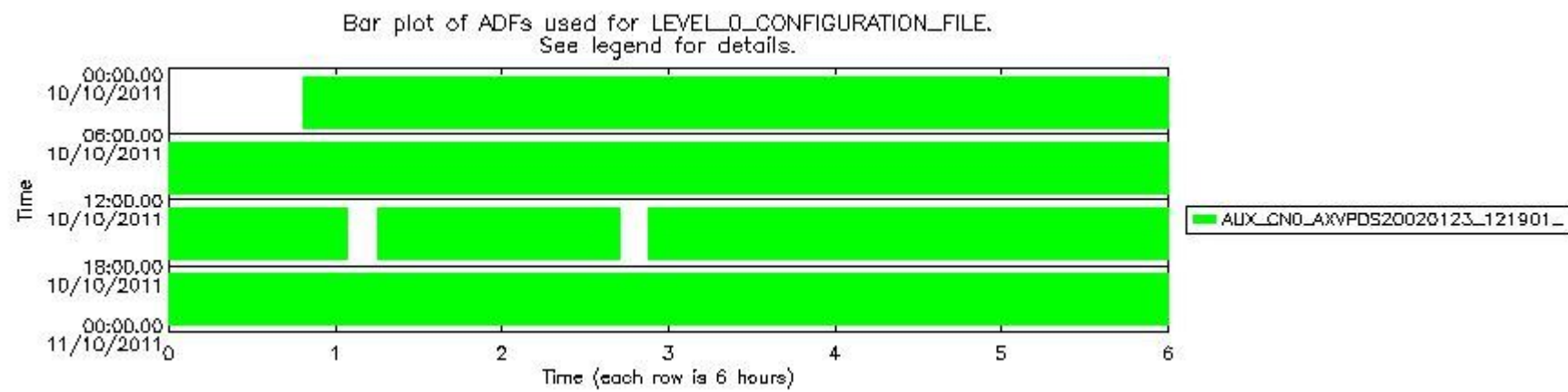
The use of ADFs is shown in two ways:

1. By means of two tables that can be used to find the ADF used for a specific product.
2. By means of plots that show changes in ADF using colours.

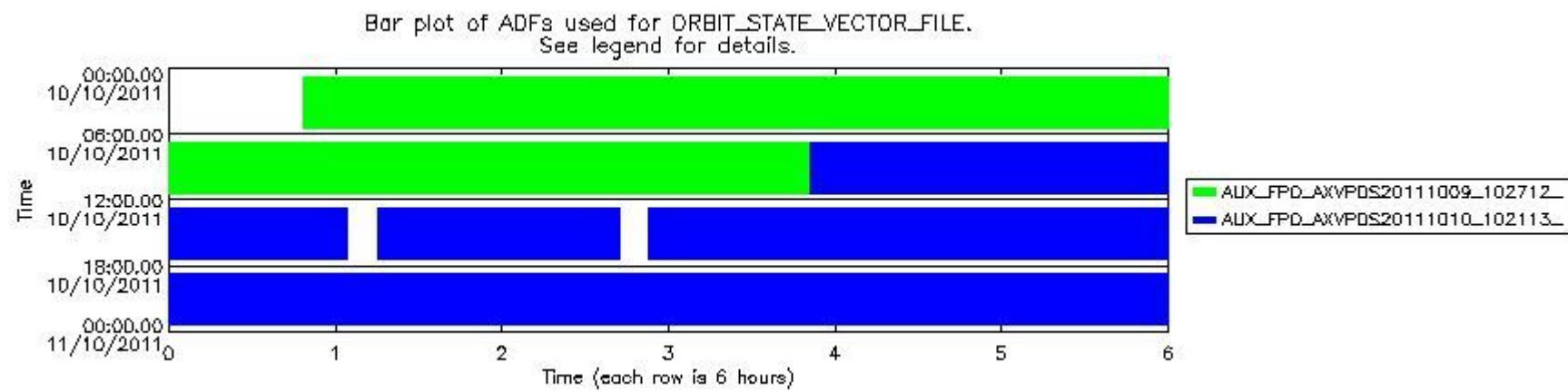
Number	ADF
0	AUX_CN0_AXVPDS20020123_121901_20020101_000000_20200101_000000
1	AUX_FPO_AXVPDS20111009_102712_20111008_185648_20111018_211032
2	AUX_FPO_AXVPDS20111010_102113_20111009_182003_20111019_203347

Number	Product name	#CN0	#FPO
--------	--------------	------	------

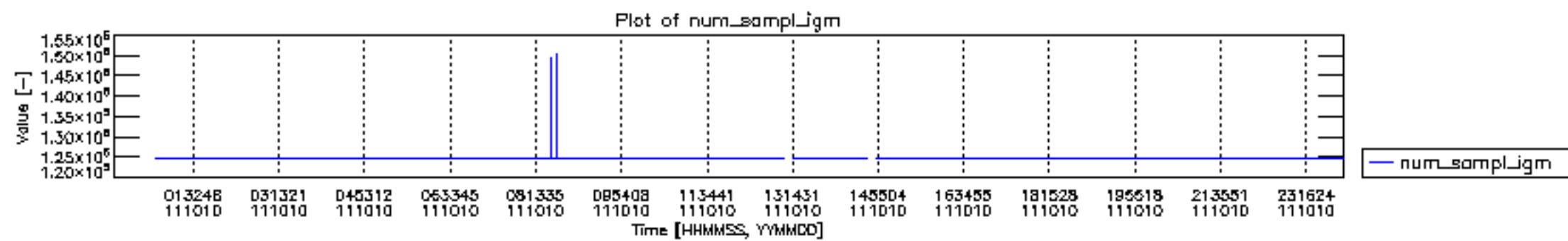
0	MIP_NL__0PNPDE20111010_004840_000057973107_00246_50260_9807.N1	0	1
1	MIP_NL__0PNPDE20111010_022419_000045963107_00247_50261_9808.N1	0	1
2	MIP_NL__0PNPDE20111010_034021_000061253107_00248_50262_9809.N1	0	1
3	MIP_NL__0PNPDE20111010_052153_000060853107_00249_50263_9810.N1	0	1
4	MIP_NL__0PNPDK20111010_070245_000040383107_00250_50264_7258.N1	0	1
5	MIP_NL__0PNPDK20111010_080906_000061743107_00251_50265_7259.N1	0	1
6	MIP_NL__0PNPDK20111010_095119_000060043107_00252_50266_7260.N1	0	2
7	MIP_NL__0PNPDK20111010_112955_000056493107_00253_50267_7261.N1	0	2
8	MIP_NL__0PNPDK20111010_131525_000052143107_00254_50268_7262.N1	0	2
9	MIP_NL__0PNPDK20111010_145307_000054503107_00255_50269_7263.N1	0	2
10	MIP_NL__0PNPDK20111010_162301_000059623107_00256_50270_7264.N1	0	2
11	MIP_NL__0PNPDK20111010_180126_000059623107_00257_50271_7265.N1	0	2
12	MIP_NL__0PNPDK20111010_193937_000061023107_00258_50272_7266.N1	0	2
13	MIP_NL__0PNPDE20111010_212011_000043313107_00259_50273_9811.N1	0	2
14	MIP_NL__0PNPDE20111010_223118_000060923107_00259_50273_9812.N1	0	2

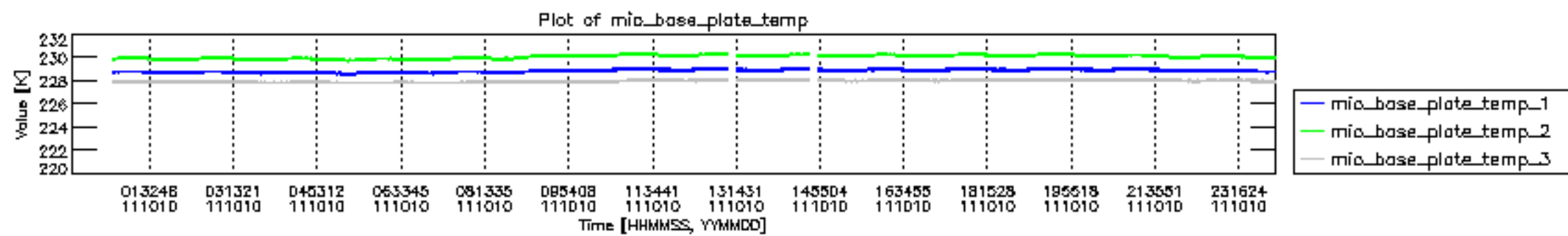


mipas\_daily\_report\_level0\_KSPT\_L0\_4504\_N\_20111010\_12.PNG

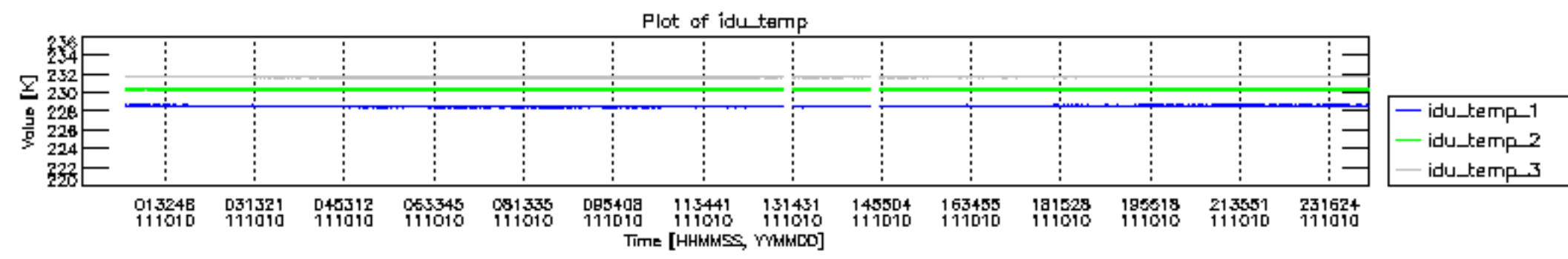


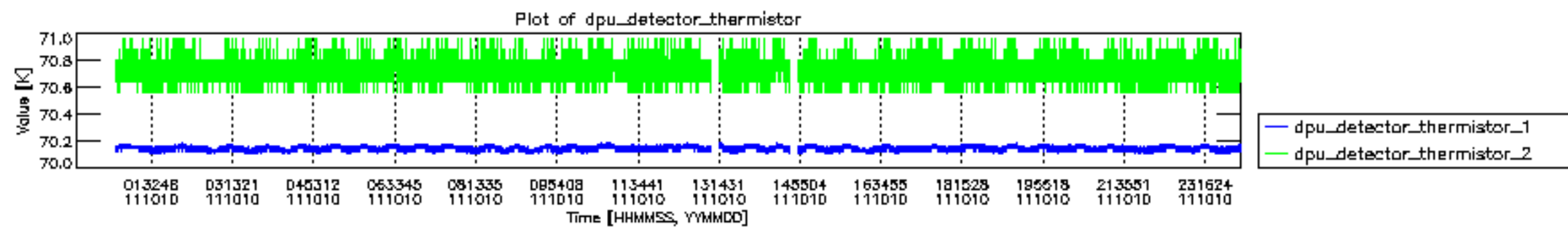
mipas\_daily\_report\_level0\_KSPT\_L0\_4504\_N\_20111010\_13.PNG

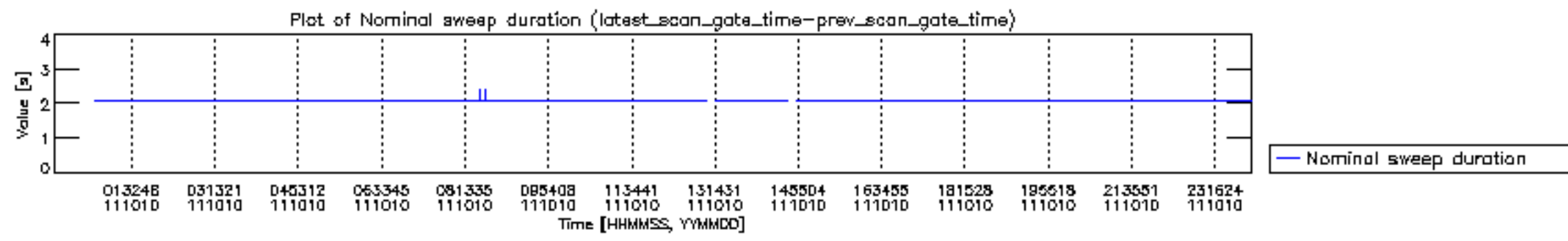


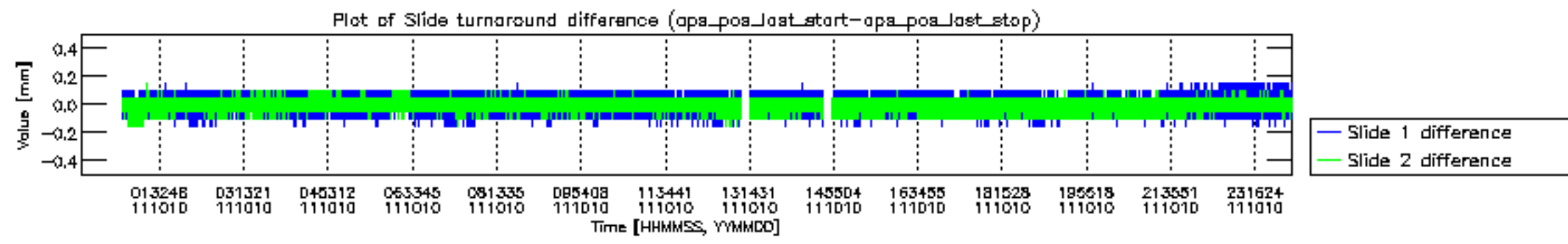


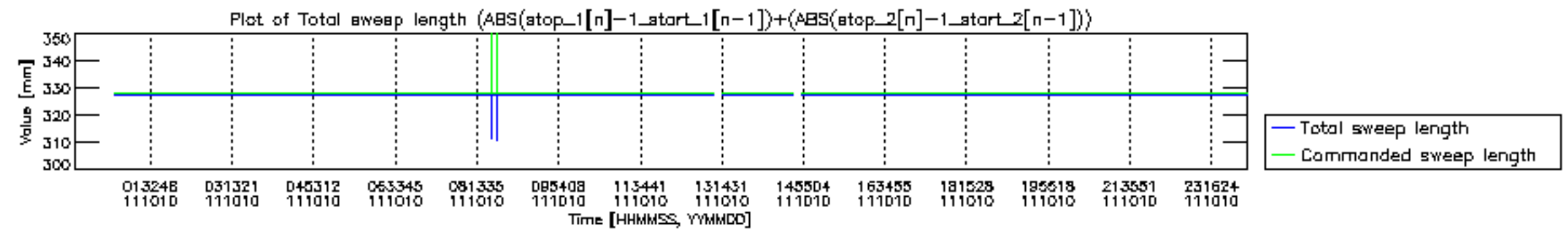




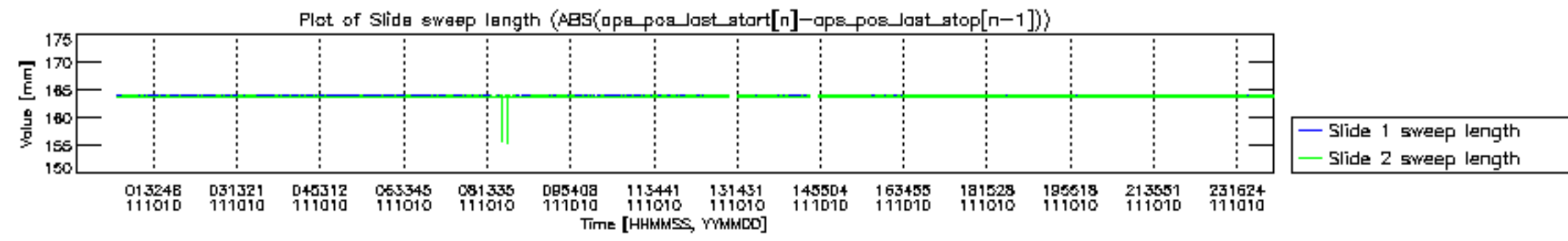


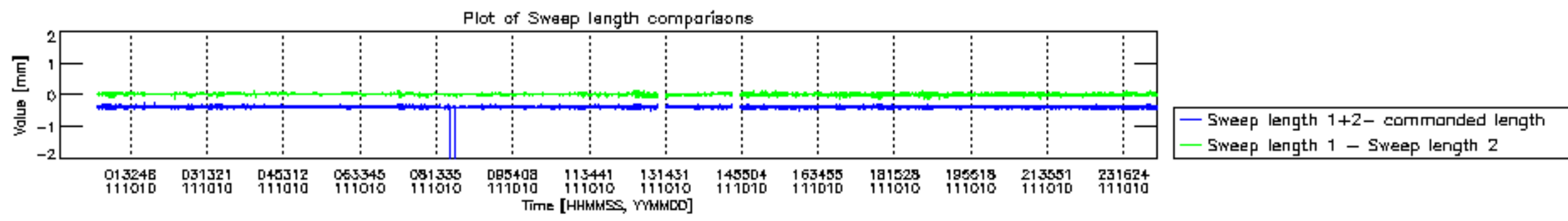


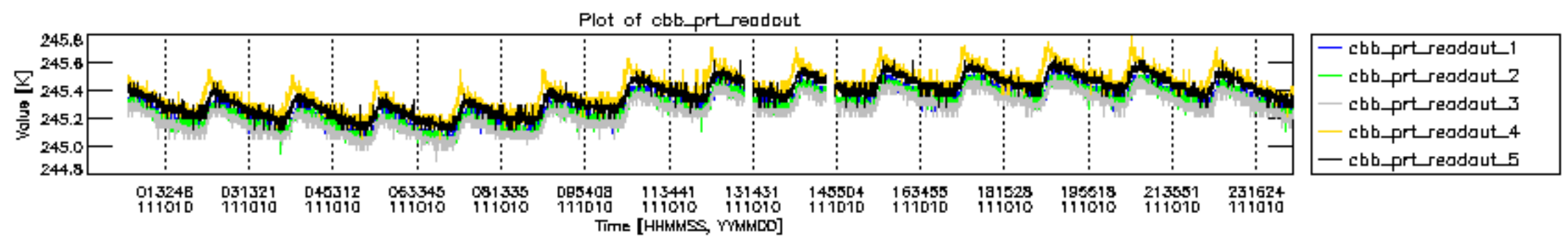


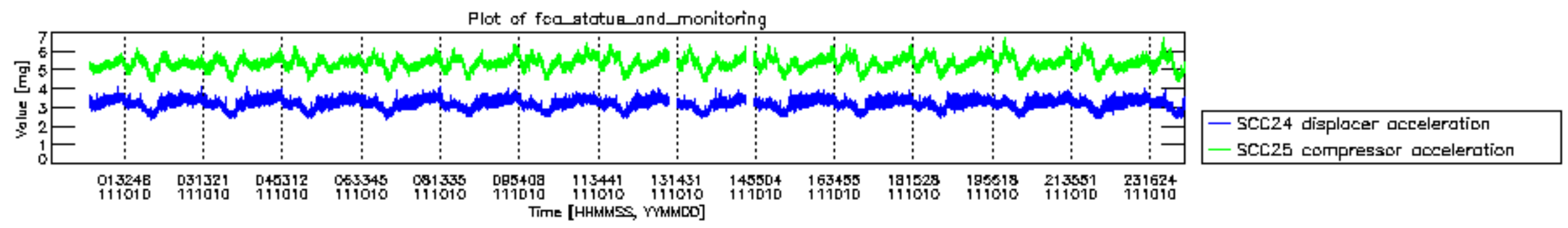












MIPNLOP\_MIPSOUPAC\_aux\_fields\_igm\_cal, channel statistics plot  
 Colour indicates value.

