

## 0. MIPAS Daily Report for level 0 products

### [0.1 General Info](#)

### [0.2 Instrument Operational Performance Parameters](#)

### [0.3 ADF monitoring](#)

## 0.1 General Info

This report contains a daily analysis on parameters extracted from MIPAS level 0 data (The MIP\_NL\_\_0P product).

### 0.1.1 Report summary

The table below shows general characteristics of the data that are included into this report.

Item	Value
Report version	v1.6 08-11-2010
Time of report generation	11OCT2011 05:24:26
Data source version	KSPT_L0/4504-N
Processing scope for products	06OCT2011 00:00:00 to 07OCT2011 00:00:00
Start time of first product within scope	06OCT2011 01:34:25
Stop time of last product within scope	07OCT2011 01:01:13
Total number of level 0 products	15
Number of level 0 products with errors	0

### 0.1.2 Product Quality Indicators per product

The following table shows a summary for each product used in this report.

#	Product name	Start time	Stop time	Prod err	ISP err sign	ISP miss sign	ISP disc sign	rs sign
0	MIP_NL__0PNPDE20111006_013425_000043583107_00189_50203_9779.N1	06OCT2011 01:34:25	06OCT2011 02:47:02	0	0	0	0	0
1	MIP_NL__0PNPDE20111006_024629_000062003107_00190_50204_9780.N1	06OCT2011 02:46:29	06OCT2011 04:29:49	0	0	0	0	0
2	MIP_NL__0PNPDE20111006_042916_000060103107_00191_50205_9781.N1	06OCT2011 04:29:16	06OCT2011 06:09:26	0	0	0	0	0
3	MIP_NL__0PNPDK20111006_060853_000041473107_00192_50206_7224.N1	06OCT2011 06:08:53	06OCT2011 07:17:59	0	0	0	0	0
4	MIP_NL__0PNPDK20111006_071726_000060613107_00193_50207_7225.N1	06OCT2011 07:17:26	06OCT2011 08:58:27	0	0	0	0	0
5	MIP_NL__0PNPDK20111006_085747_000060203107_00194_50208_7226.N1	06OCT2011 08:57:47	06OCT2011 10:38:08	0	0	0	0	0
6	MIP_NL__0PNPDK20111006_103726_000059753107_00195_50209_7227.N1	06OCT2011 10:37:26	06OCT2011 12:17:01	0	0	0	0	0
7	MIP_NL__0PNPDK20111006_121525_000060213107_00196_50210_7228.N1	06OCT2011 12:15:25	06OCT2011 13:55:45	0	0	0	0	0
8	MIP_NL__0PNPDK20111006_135409_000059333107_00197_50211_7229.N1	06OCT2011 13:54:09	06OCT2011 15:33:02	0	0	0	0	0
9	MIP_NL__0PNPDK20111006_153201_000058223107_00198_50212_7230.N1	06OCT2011 15:32:01	06OCT2011 17:09:03	0	0	0	0	0
10	MIP_NL__0PNPDK20111006_170817_000060123107_00199_50213_7231.N1	06OCT2011 17:08:17	06OCT2011 18:48:30	0	0	0	0	0
11	MIP_NL__0PNPDK20111006_184733_000059563107_00200_50214_7232.N1	06OCT2011 18:47:33	06OCT2011 20:26:49	0	0	0	0	0
12	MIP_NL__0PNPDE20111006_202503_000044603107_00201_50215_9782.N1	06OCT2011 20:25:03	06OCT2011 21:39:23	0	0	0	0	0
13	MIP_NL__0PNPDE20111006_213818_000060813107_00201_50215_9783.N1	06OCT2011 21:38:18	06OCT2011 23:19:39	0	0	0	0	0
14	MIP_NL__0PNPDE20111006_231838_000061543107_00202_50216_9784.N1	06OCT2011 23:18:38	07OCT2011 01:01:13	0	0	0	0	0

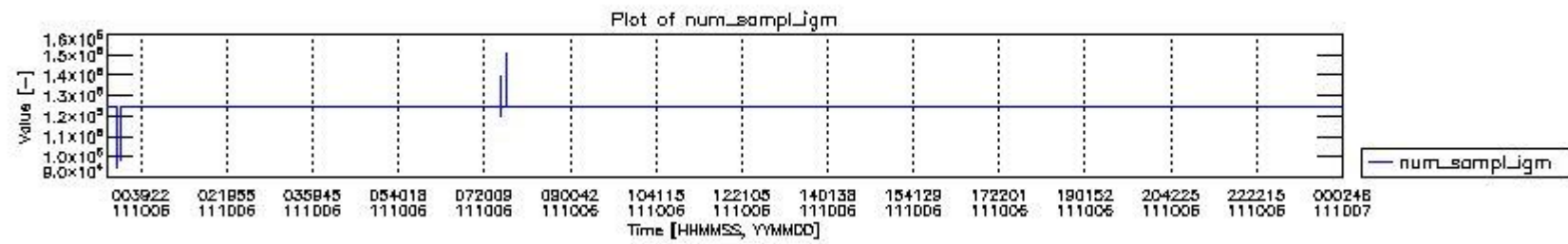
## 0.2 Instrument Operational Performance Parameters

The following plots give an overview of various instrument parameters for this day. The instrument parameters are part of the auxiliary data field within the source packets of the MIP\_NL\_\_0P product. The auxiliary data is normally included twice per interferogram. Note that only the first packet is currently included in monitoring.

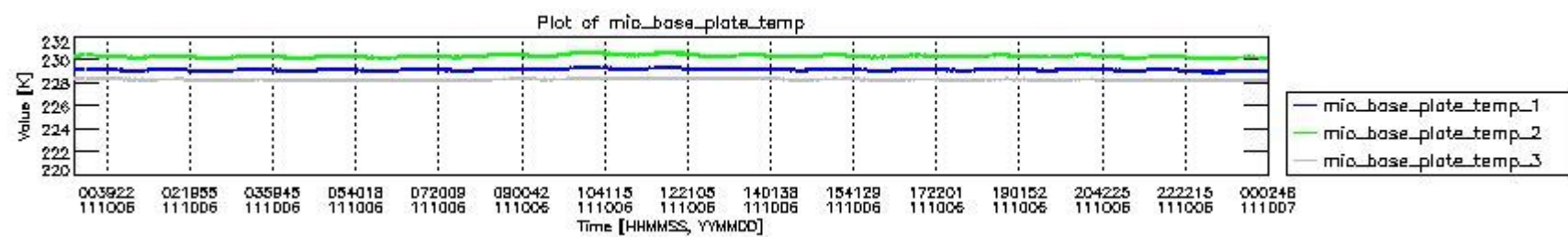
The following table shows the counts of various interferogram number of samples

Number of igm samples	Count [#]	Count [%]
94934	1	0.0024109748
98699	1	0.0024109748
99801	1	0.0024109748

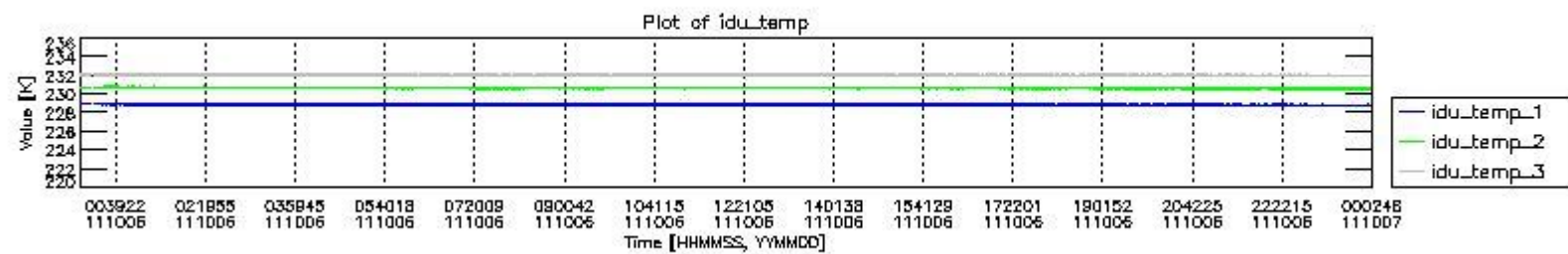
119725	1	0.0024109748
119933	1	0.0024109748
123102	1	0.0024109748
123951	1	0.0024109748
124800	38699	93.302312
124803	2766	6.6687562
127679	1	0.0024109748
134782	1	0.0024109748
139857	1	0.0024109748
147811	1	0.0024109748
150690	1	0.0024109748



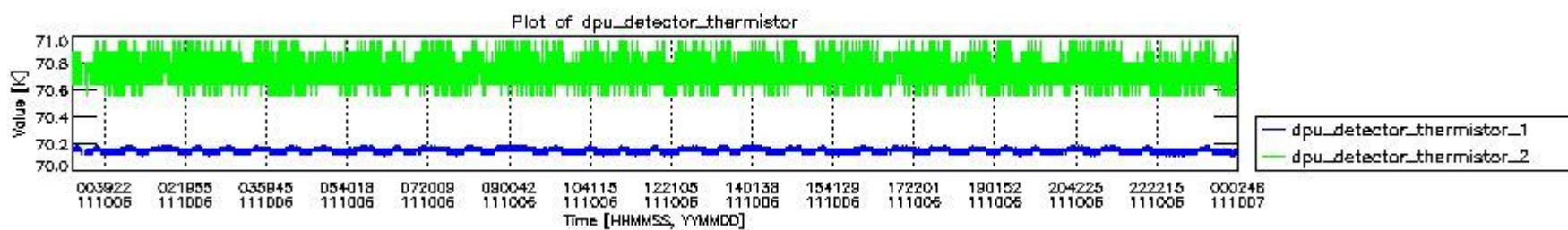
mipas\_daily\_report\_level0\_KSPT\_L0\_4504\_N\_20111006\_0.PNG



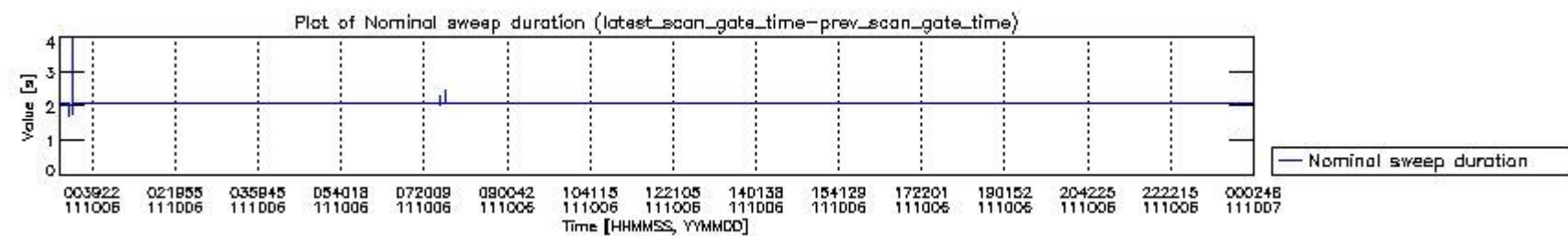
mipas\_daily\_report\_level0\_KSPT\_L0\_4504\_N\_20111006\_1.PNG



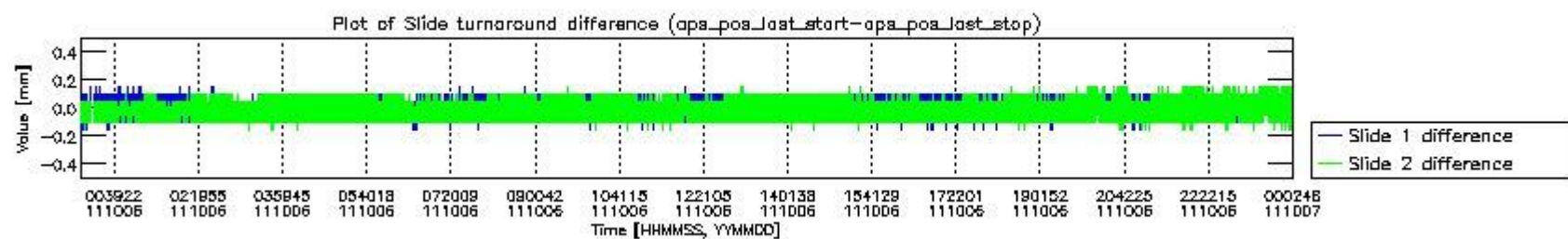
mipas\_daily\_report\_level0\_KSPT\_L0\_4504\_N\_20111006\_2.PNG



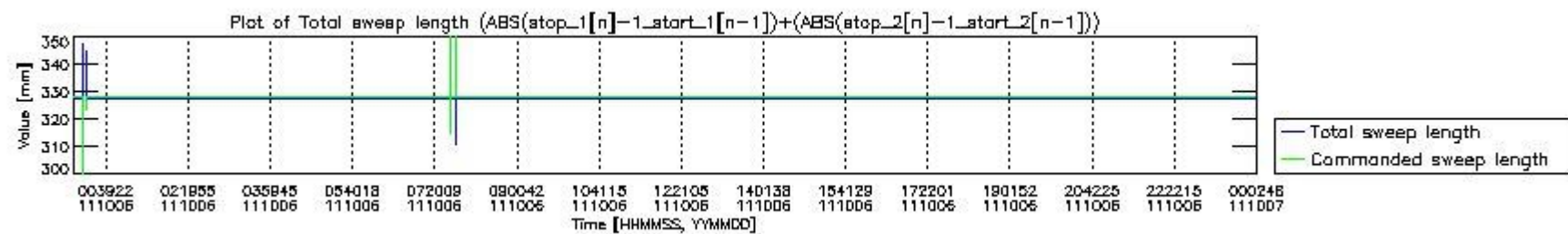
mipas\_daily\_report\_level0\_KSPT\_L0\_4504\_N\_20111006\_3.PNG



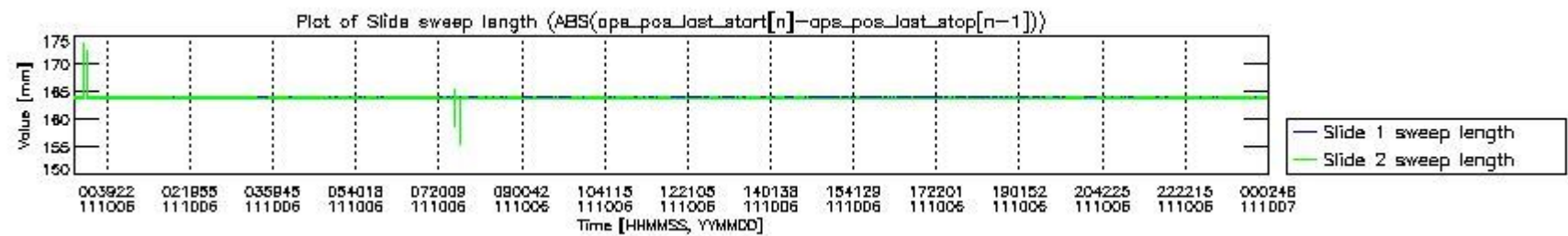
mipas\_daily\_report\_level0\_KSPT\_L0\_4504\_N\_20111006\_4.PNG



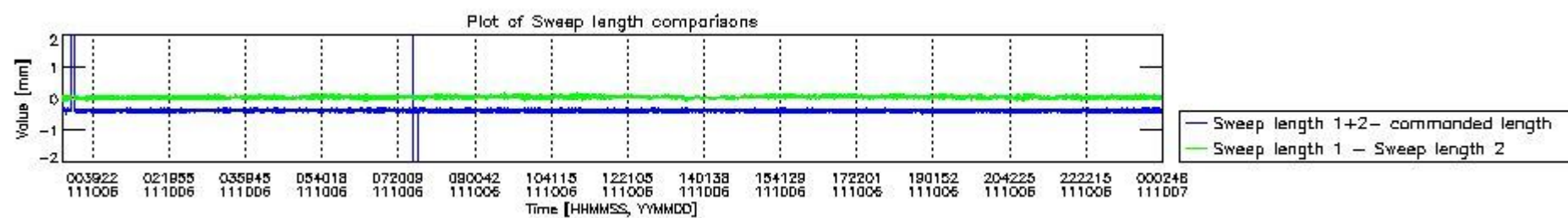
mipas\_daily\_report\_level0\_KSPT\_L0\_4504\_N\_20111006\_5.PNG



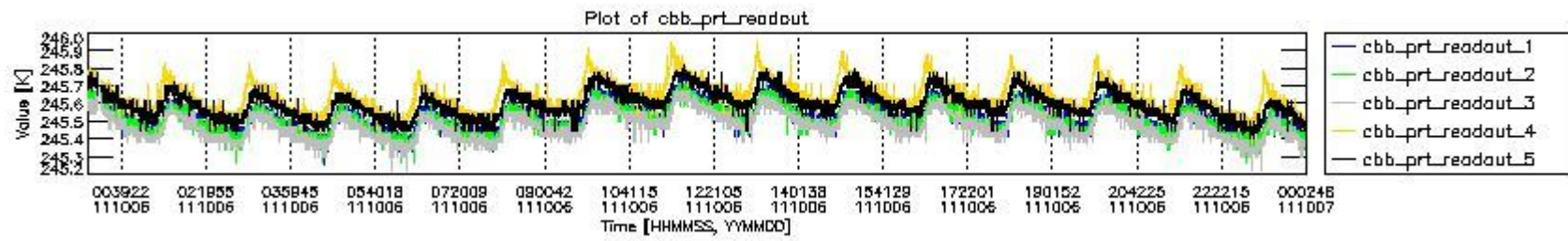
mipas\_daily\_report\_level0\_KSPT\_L0\_4504\_N\_20111006\_6.PNG



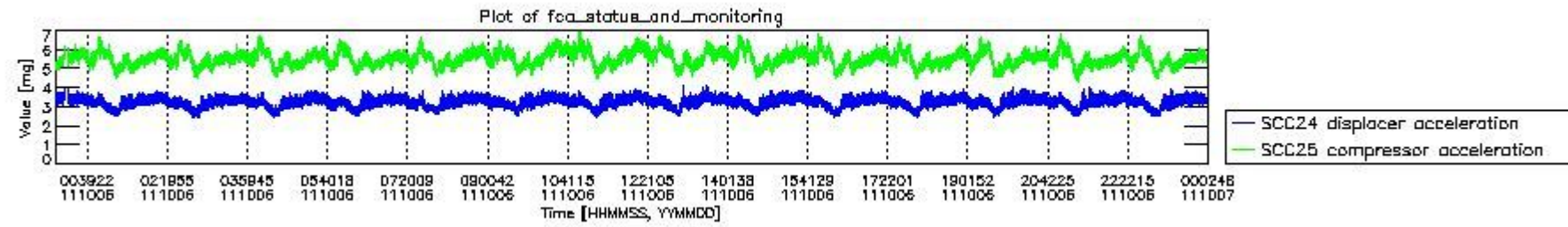
mipas\_daily\_report\_level0\_KSPT\_L0\_4504\_N\_20111006\_7.PNG



mipas\_daily\_report\_level0\_KSPT\_L0\_4504\_N\_20111006\_8.PNG



mipas\_daily\_report\_level0\_KSPT\_L0\_4504\_N\_20111006\_9.PNG

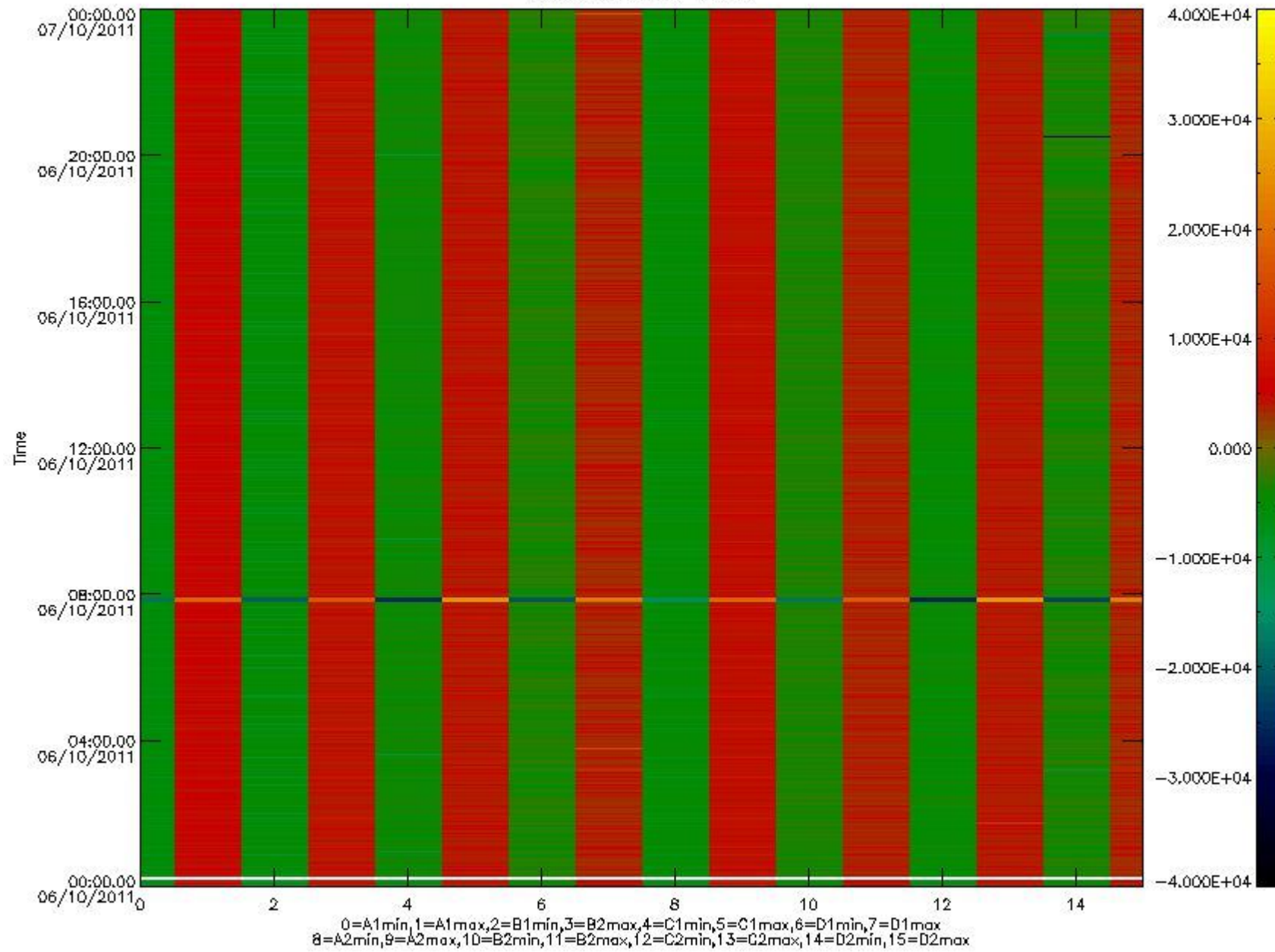


mipas\_daily\_report\_level0\_KSPT\_L0\_4504\_N\_20111006\_10.PNG

The following table shows channel statistics for all channels for this day.

Channel	Min	Max	ADC
A1	-18140	19268	16bit
B1	-20600	17724	16bit
C1	-25504	25338	16bit
D1	-24388	32767	16bit
A2	-15774	19510	16bit
B2	-18575	18251	16bit
C2	-26514	26079	16bit
D2	-32768	29812	16bit

MIPNLOP\_MIPSOUPAC\_aux\_fields\_igm\_cal, channel statistics plot  
Colour indicates value.



mipas\_daily\_report\_level0\_KSPT\_L0\_4504\_N\_20111006\_11.PNG

### 0.3 ADF monitoring

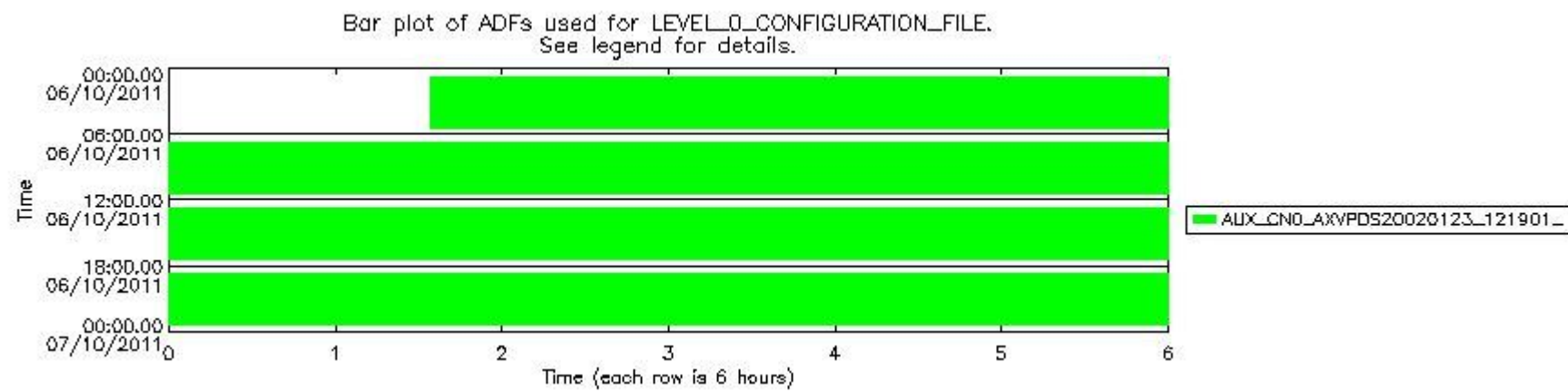
The use of ADFs is shown in two ways:

1. By means of two tables that can be used to find the ADF used for a specific product.
2. By means of plots that show changes in ADF using colours.

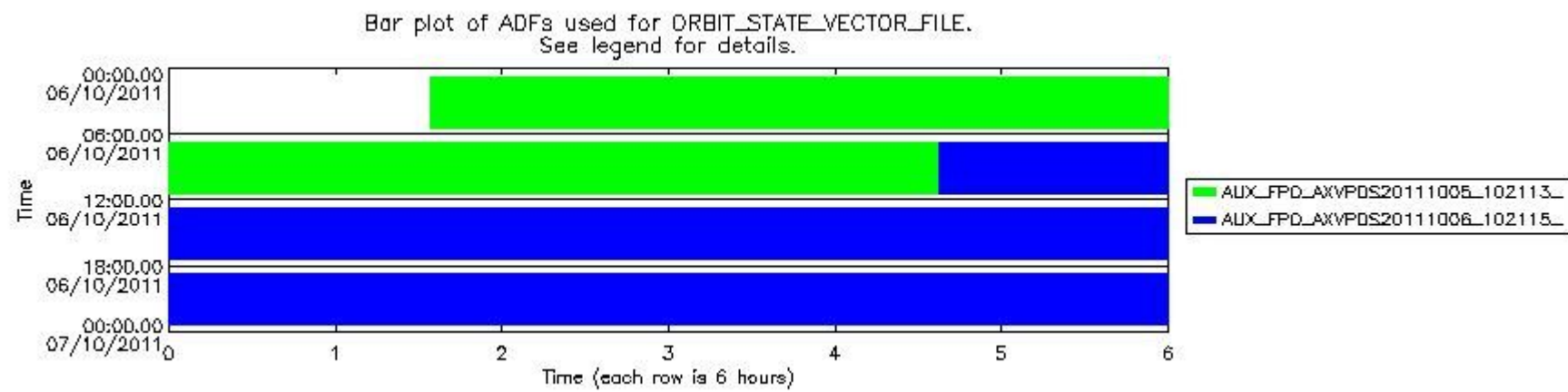
Number	ADF
0	AUX_CN0_AXVPDS20020123_121901_20020101_000000_20200101_000000
1	AUX_FPO_AXVPDS20111005_102113_20111004_194332_20111014_201702
2	AUX_FPO_AXVPDS20111006_102115_20111005_190648_20111015_212031

Number	Product name	#CN0	#FPO
--------	--------------	------	------

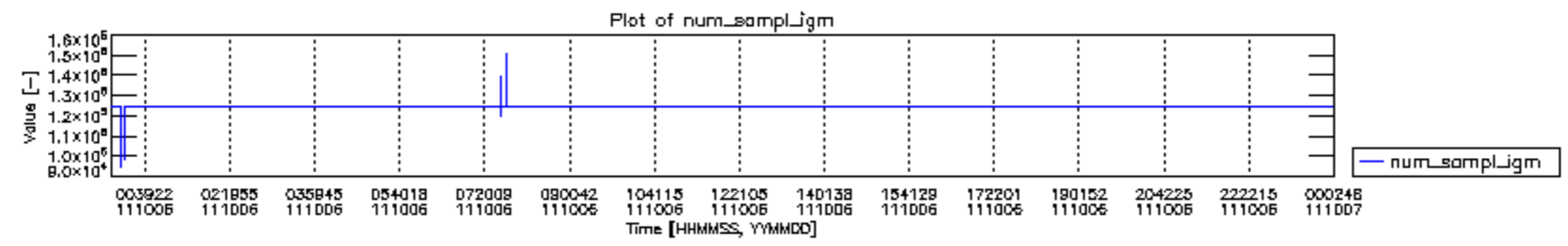
0	MIP_NL__0PNPDE20111006_013425_000043583107_00189_50203_9779.N1	0	1
1	MIP_NL__0PNPDE20111006_024629_000062003107_00190_50204_9780.N1	0	1
2	MIP_NL__0PNPDE20111006_042916_000060103107_00191_50205_9781.N1	0	1
3	MIP_NL__0PNPDK20111006_060853_000041473107_00192_50206_7224.N1	0	1
4	MIP_NL__0PNPDK20111006_071726_000060613107_00193_50207_7225.N1	0	1
5	MIP_NL__0PNPDK20111006_085747_000060203107_00194_50208_7226.N1	0	1
6	MIP_NL__0PNPDK20111006_103726_000059753107_00195_50209_7227.N1	0	2
7	MIP_NL__0PNPDK20111006_121525_000060213107_00196_50210_7228.N1	0	2
8	MIP_NL__0PNPDK20111006_135409_000059333107_00197_50211_7229.N1	0	2
9	MIP_NL__0PNPDK20111006_153201_000058223107_00198_50212_7230.N1	0	2
10	MIP_NL__0PNPDK20111006_170817_000060123107_00199_50213_7231.N1	0	2
11	MIP_NL__0PNPDK20111006_184733_000059563107_00200_50214_7232.N1	0	2
12	MIP_NL__0PNPDE20111006_202503_000044603107_00201_50215_9782.N1	0	2
13	MIP_NL__0PNPDE20111006_213818_000060813107_00201_50215_9783.N1	0	2
14	MIP_NL__0PNPDE20111006_231838_000061543107_00202_50216_9784.N1	0	2

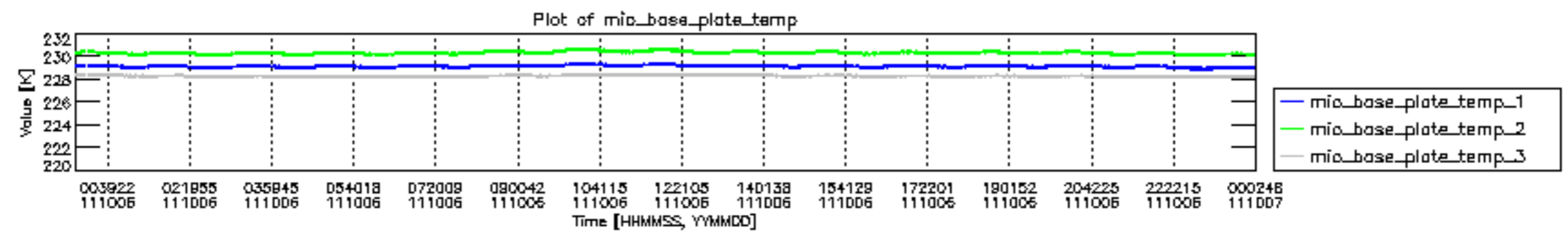


mipas\_daily\_report\_level0\_KSPT\_L0\_4504\_N\_20111006\_12.PNG

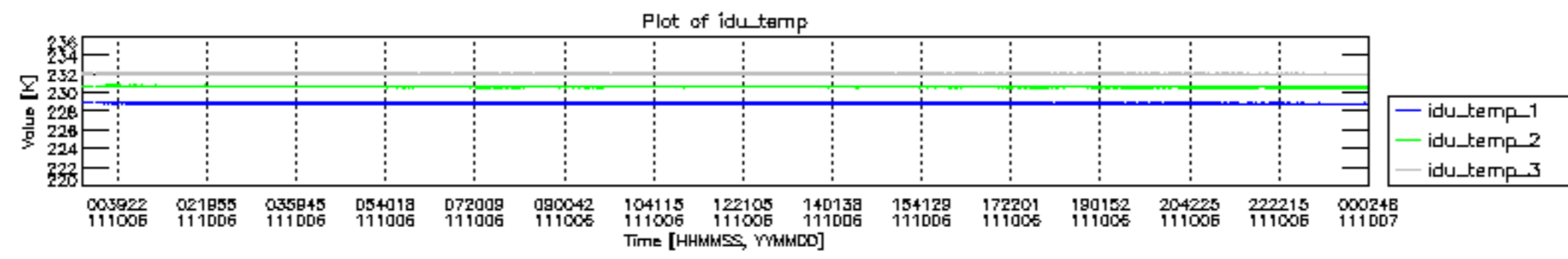


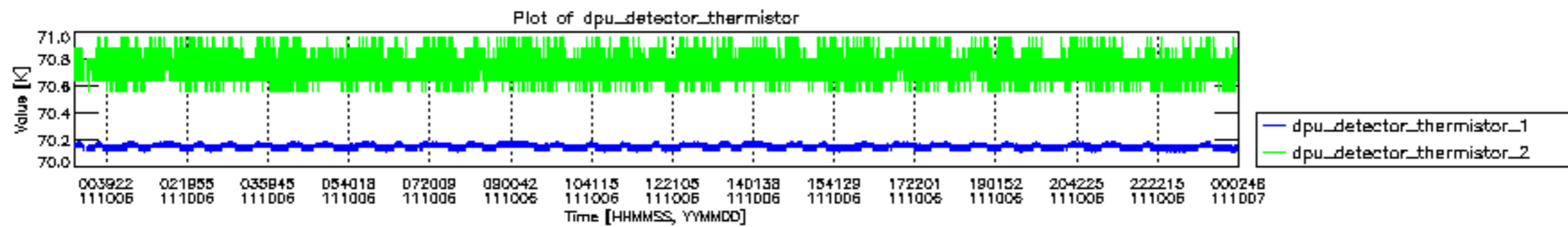
mipas\_daily\_report\_level0\_KSPT\_L0\_4504\_N\_20111006\_13.PNG

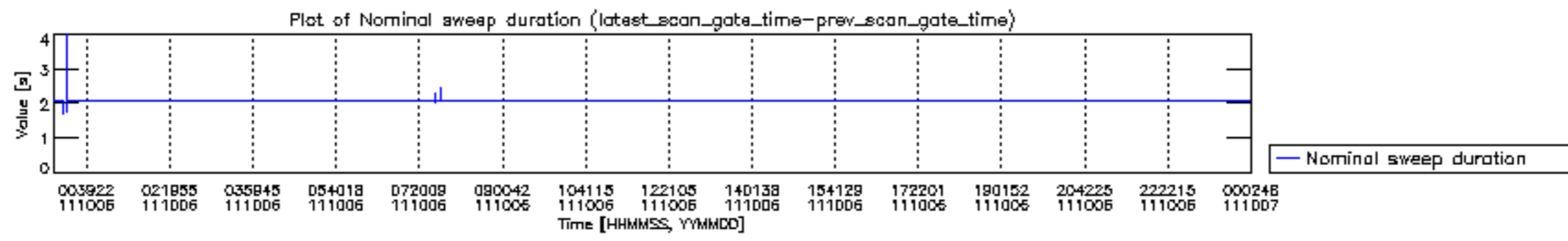


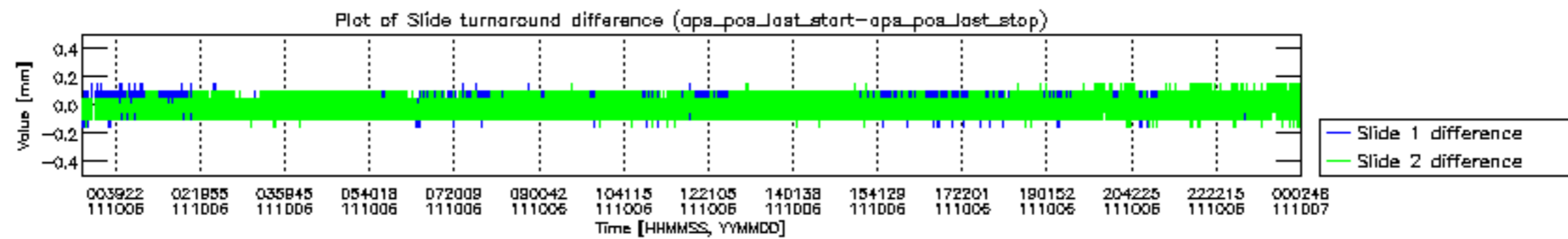


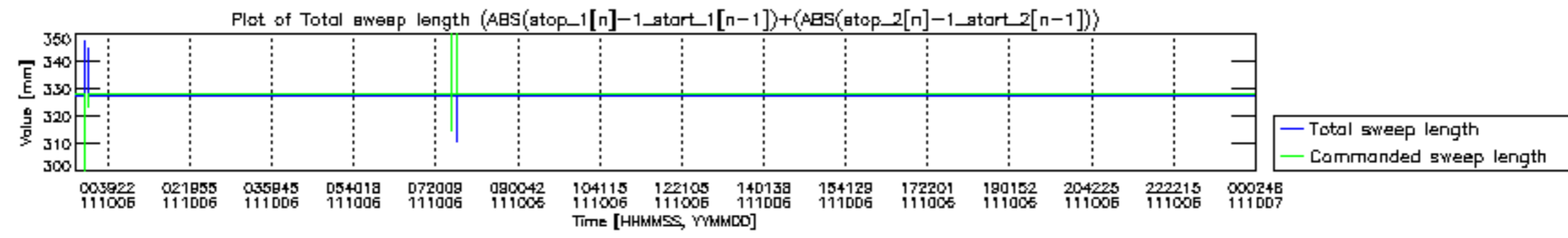


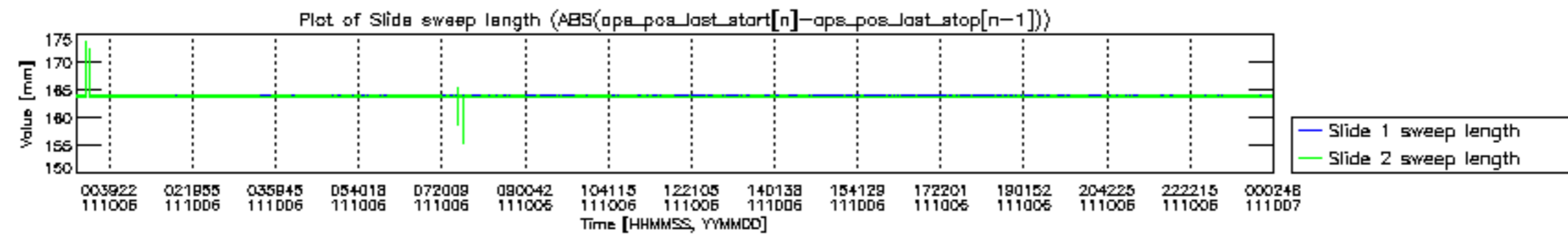


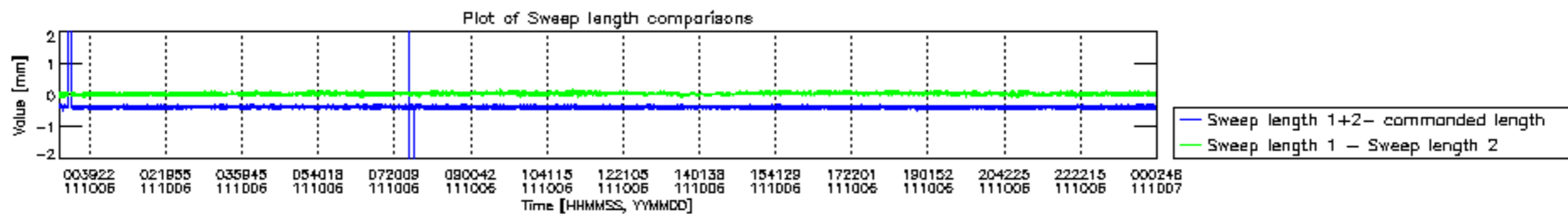


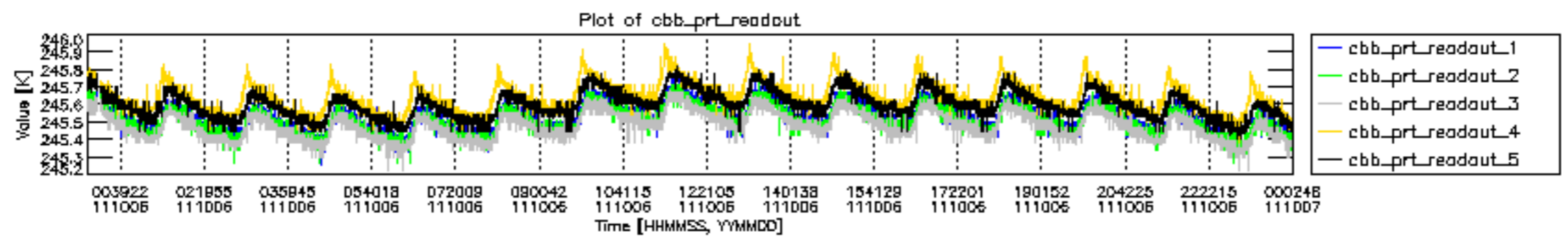




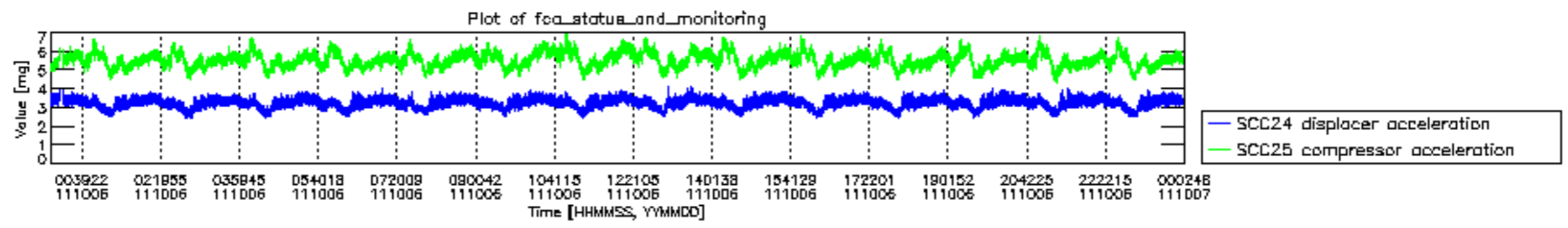












MIPNLOP\_MIPSOUPAC\_aux\_fields\_igm\_cal, channel statistics plot  
 Colour indicates value.

