

0. MIPAS Daily Report for level 0 products

[0.1 General Info](#)

[0.2 Instrument Operational Performance Parameters](#)

[0.3 ADF monitoring](#)

0.1 General Info

This report contains a daily analysis on parameters extracted from MIPAS level 0 data (The MIP_NL__0P product).

0.1.1 Report summary

The table below shows general characteristics of the data that are included into this report.

Item	Value
Report version	v1.6 08-11-2010
Time of report generation	10OCT2011 05:25:08
Data source version	KSPT_L0/4504-N
Processing scope for products	05OCT2011 00:00:00 to 06OCT2011 00:00:00
Start time of first product within scope	05OCT2011 00:32:09
Stop time of last product within scope	06OCT2011 01:35:29
Total number of level 0 products	16
Number of level 0 products with errors	0

0.1.2 Product Quality Indicators per product

The following table shows a summary for each product used in this report.

#	Product name	Start time	Stop time	Prod err	ISP err sign	ISP miss sign	ISP disc sign	rs sign
0	MIP_NL__0PNPDE20111005_003209_000058203107_00174_50188_9772.N1	05OCT2011 00:32:09	05OCT2011 02:09:09	0	0	0	0	0
1	MIP_NL__0PNPDE20111005_020722_000046463107_00175_50189_9773.N1	05OCT2011 02:07:22	05OCT2011 03:24:48	0	0	0	0	0
2	MIP_NL__0PNPDE20111005_032415_000061293107_00176_50190_9774.N1	05OCT2011 03:24:15	05OCT2011 05:06:24	0	0	0	0	0
3	MIP_NL__0PNPDE20111005_050551_000060003107_00177_50191_9775.N1	05OCT2011 05:05:51	05OCT2011 06:45:51	0	0	0	0	0
4	MIP_NL__0PNPDK20111005_064517_000041323107_00178_50192_7215.N1	05OCT2011 06:45:17	05OCT2011 07:54:09	0	0	0	0	0
5	MIP_NL__0PNPDK20111005_075336_000061273107_00179_50193_7216.N1	05OCT2011 07:53:36	05OCT2011 09:35:43	0	0	0	0	0
6	MIP_NL__0PNPDK20111005_093459_000059833107_00180_50194_7217.N1	05OCT2011 09:34:59	05OCT2011 11:14:42	0	0	0	0	0
7	MIP_NL__0PNPDK20111005_111401_000059063107_00181_50195_7218.N1	05OCT2011 11:14:01	05OCT2011 12:52:26	0	0	0	0	0
8	MIP_NL__0PNPDK20111005_125128_000059483107_00182_50196_7219.N1	05OCT2011 12:51:28	05OCT2011 14:30:35	0	0	0	0	0
9	MIP_NL__0PNPDK20111005_142859_000060103107_00183_50197_7220.N1	05OCT2011 14:28:59	05OCT2011 16:09:09	0	0	0	0	0
10	MIP_NL__0PNPDK20111005_160731_000059393107_00184_50198_7221.N1	05OCT2011 16:07:31	05OCT2011 17:46:30	0	0	0	0	0
11	MIP_NL__0PNPDK20111005_174534_000058833107_00185_50199_7222.N1	05OCT2011 17:45:34	05OCT2011 19:23:37	0	0	0	0	0
12	MIP_NL__0PNPDK20111005_192224_000061753107_00186_50200_7223.N1	05OCT2011 19:22:24	05OCT2011 21:05:19	0	0	0	0	0
13	MIP_NL__0PNPDE20111005_210433_000042073107_00187_50201_9776.N1	05OCT2011 21:04:33	05OCT2011 22:14:40	0	0	0	0	0
14	MIP_NL__0PNPDE20111005_221337_000061383107_00187_50201_9777.N1	05OCT2011 22:13:37	05OCT2011 23:55:55	0	0	0	0	0
15	MIP_NL__0PNPDE20111005_235455_000060353107_00188_50202_9778.N1	05OCT2011 23:54:55	06OCT2011 01:35:29	0	0	0	0	0

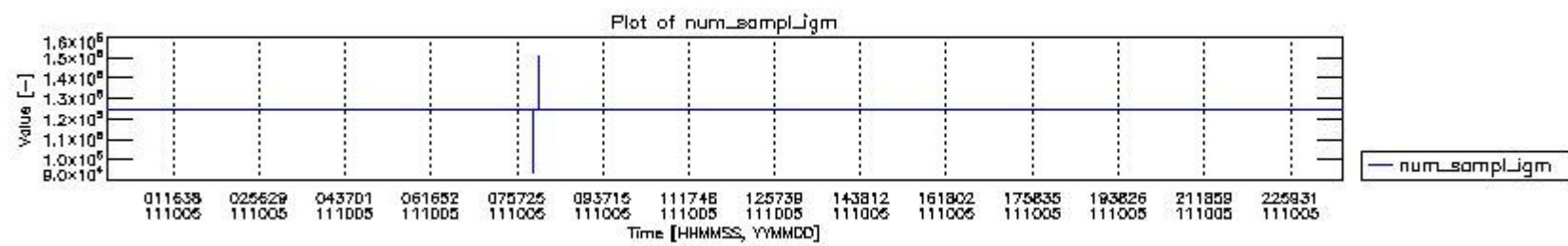
0.2 Instrument Operational Performance Parameters

The following plots give an overview of various instrument parameters for this day. The instrument parameters are part of the auxiliary data field within the source packets of the MIP_NL__0P product. The auxiliary data is normally included twice per interferogram. Note that only the first packet is currently included in monitoring.

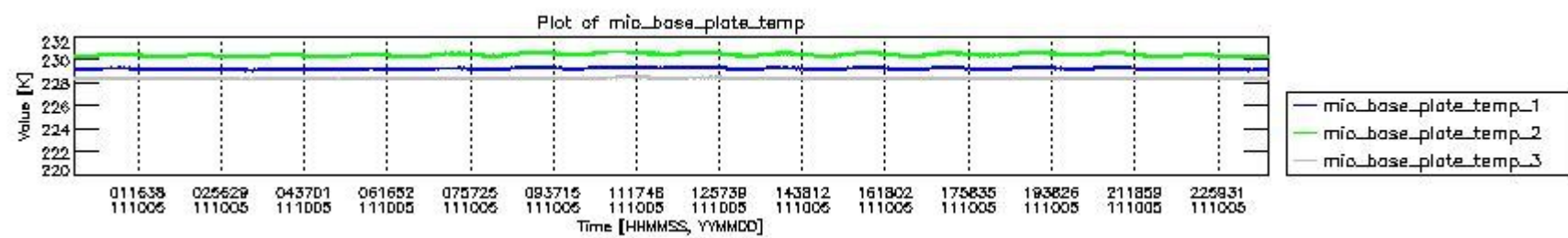
The following table shows the counts of various interferogram number of samples

Number of igm samples	Count [#]	Count [%]
93448	1	0.0024061598
99058	1	0.0024061598

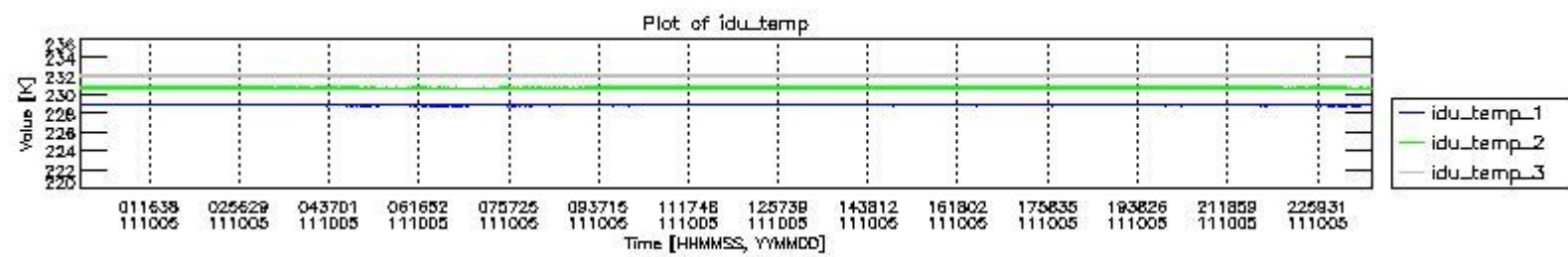
119190	1	0.0024061598
124800	38606	92.892204
124803	2948	7.0933590
127456	1	0.0024061598
147588	1	0.0024061598
150244	1	0.0024061598



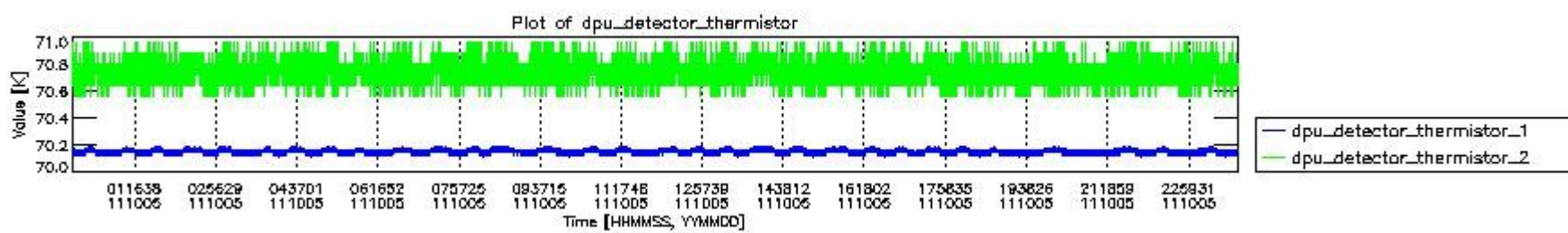
mipas_daily_report_level0_KSPT_L0_4504_N_20111005_0.PNG



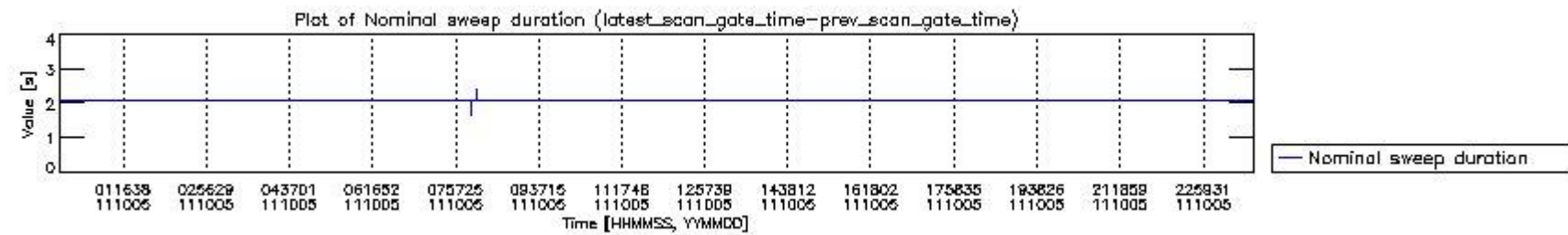
mipas_daily_report_level0_KSPT_L0_4504_N_20111005_1.PNG



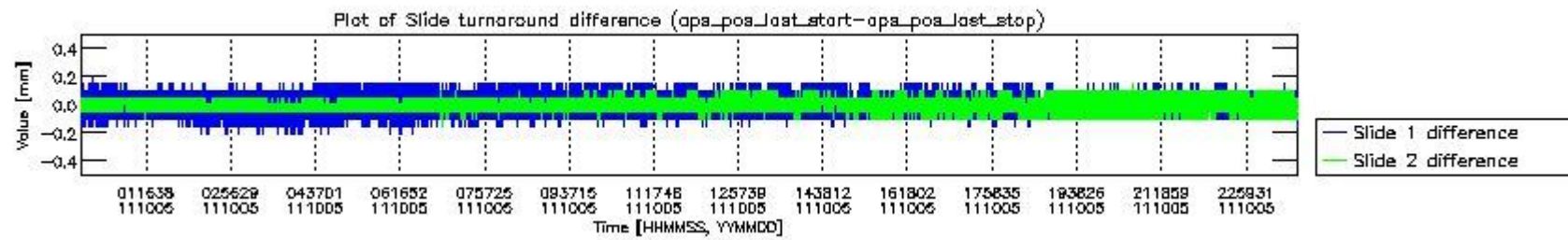
mipas_daily_report_level0_KSPT_L0_4504_N_20111005_2.PNG



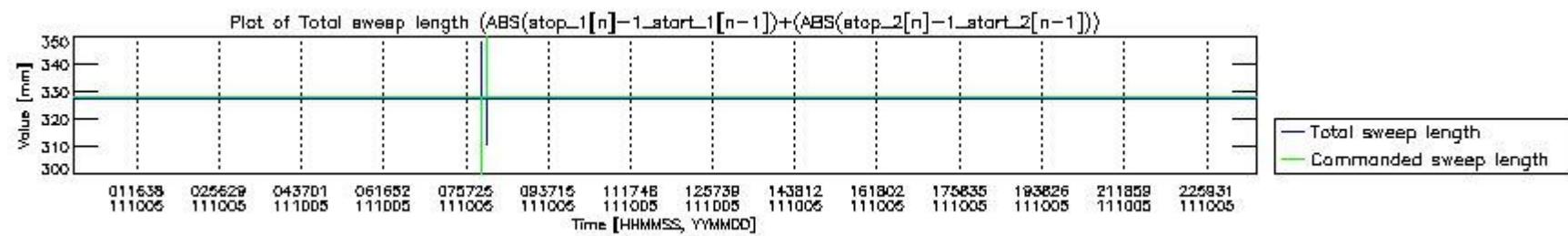
mipas_daily_report_level0_KSPT_L0_4504_N_20111005_3.PNG



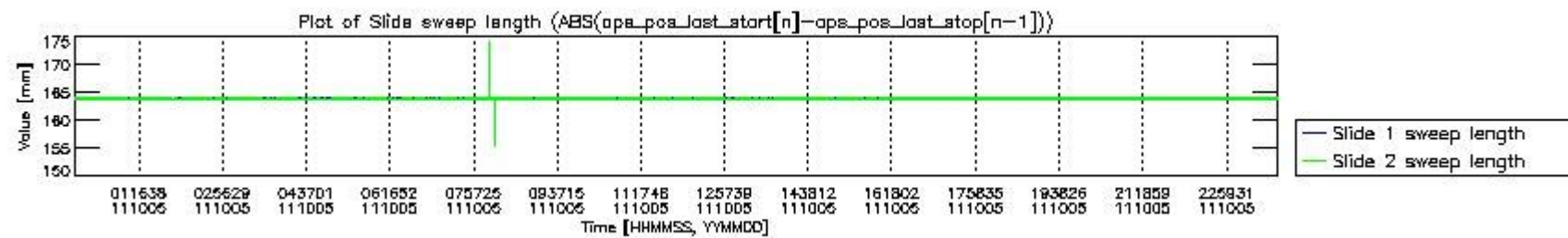
mipas_daily_report_level0_KSPT_L0_4504_N_20111005_4.PNG



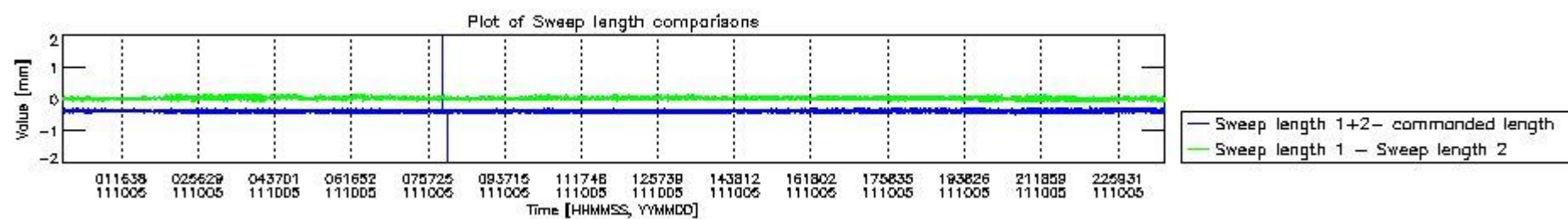
mipas_daily_report_level0_KSPT_L0_4504_N_20111005_5.PNG



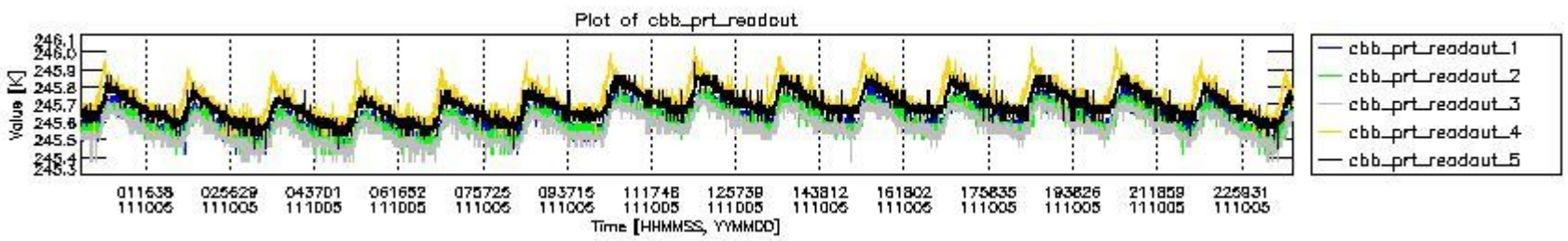
mipas_daily_report_level0_KSPT_L0_4504_N_20111005_6.PNG



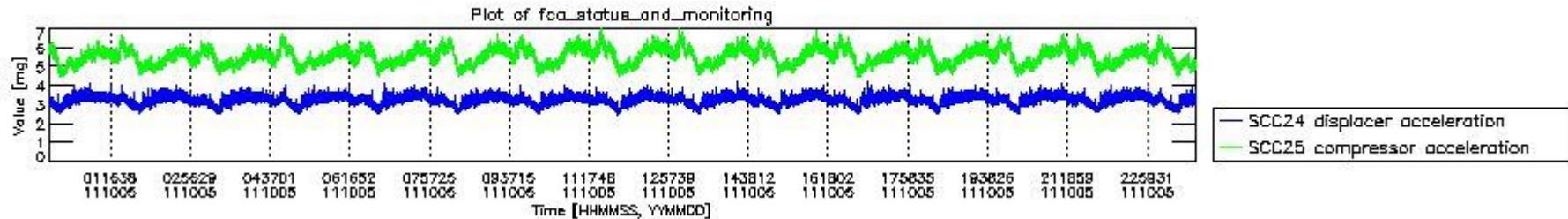
mipas_daily_report_level0_KSPT_L0_4504_N_20111005_7.PNG



mipas_daily_report_level0_KSPT_L0_4504_N_20111005_8.PNG



mipas_daily_report_level0_KSPT_L0_4504_N_20111005_9.PNG

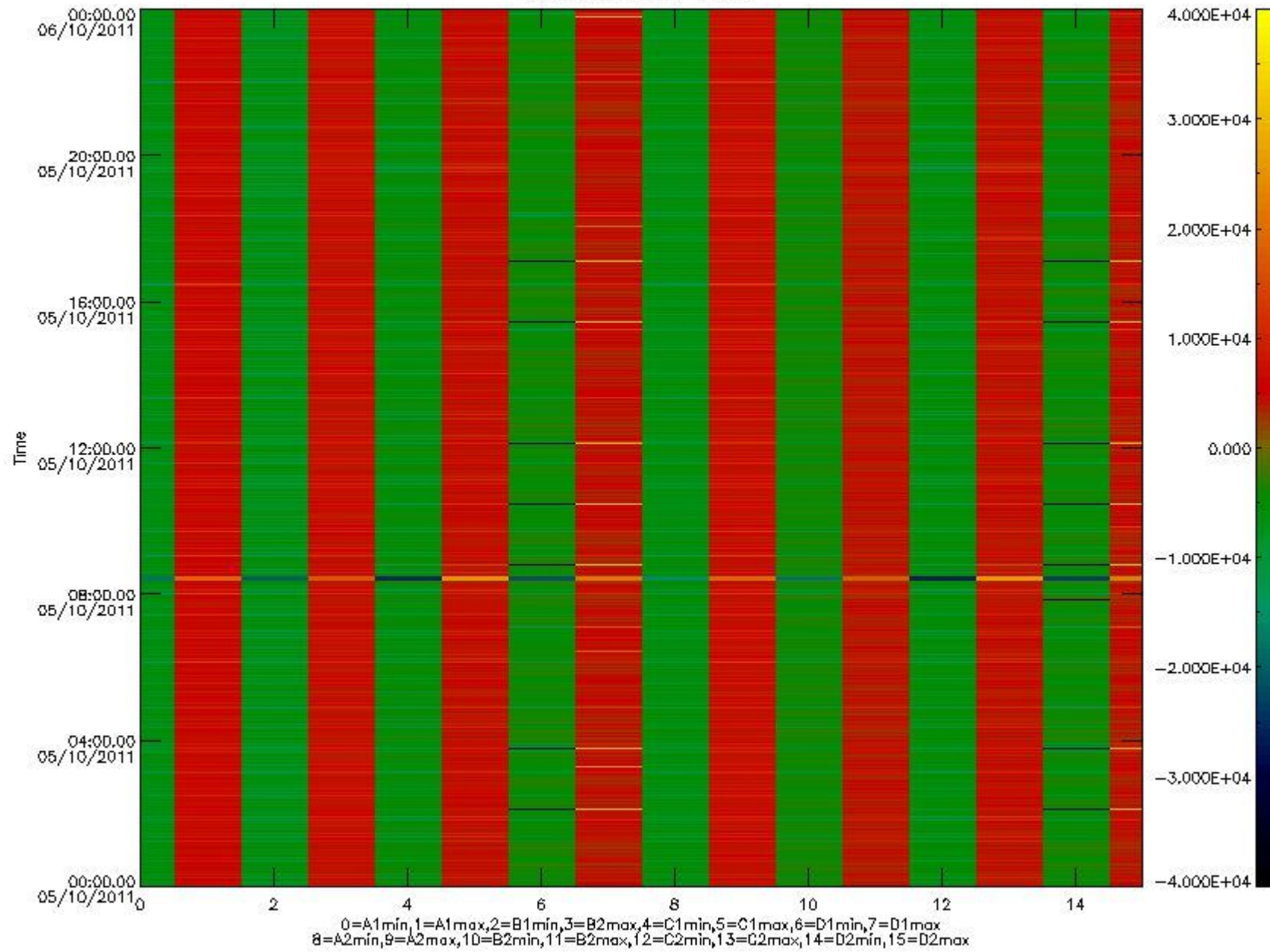


mipas_daily_report_level0_KSPT_L0_4504_N_20111005_10.PNG

The following table shows channel statistics for all channels for this day.

Channel	Min	Max	ADC
A1	-18180	19278	16bit
B1	-20678	17766	16bit
C1	-25597	25517	16bit
D1	-32768	32767	16bit
A2	-15810	19546	16bit
B2	-18652	18339	16bit
C2	-26622	26260	16bit
D2	-32768	32767	16bit

MIPNLOP_MIPSOUPAC_aux_fields_igm_cal, channel statistics plot
Colour indicates value.



mipas_daily_report_level0_KSPT_L0_4504_N_20111005_11.PNG

0.3 ADF monitoring

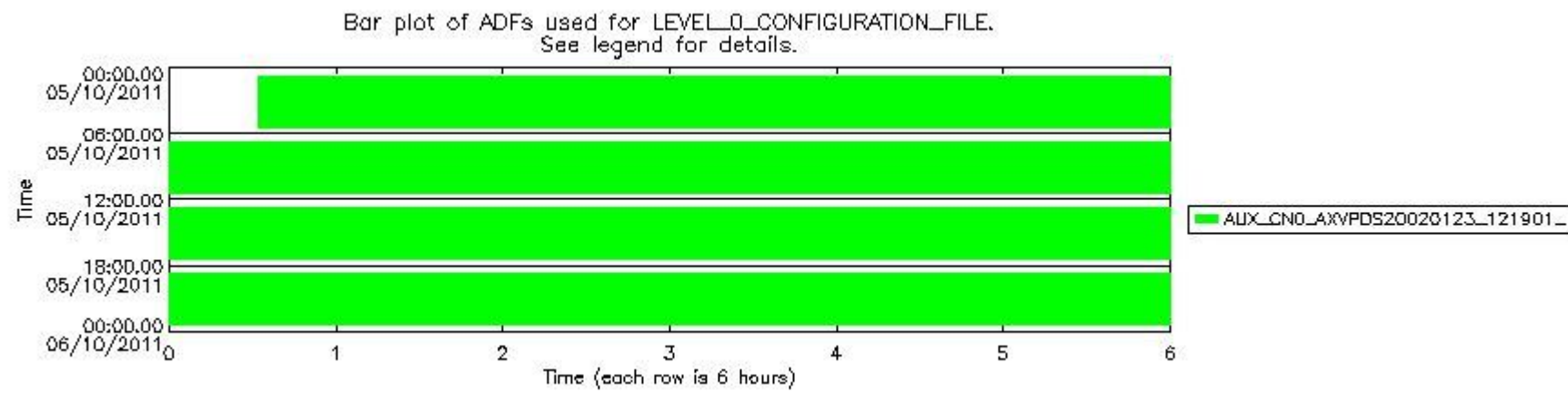
The use of ADFs is shown in two ways:

1. By means of two tables that can be used to find the ADF used for a specific product.
2. By means of plots that show changes in ADF using colours.

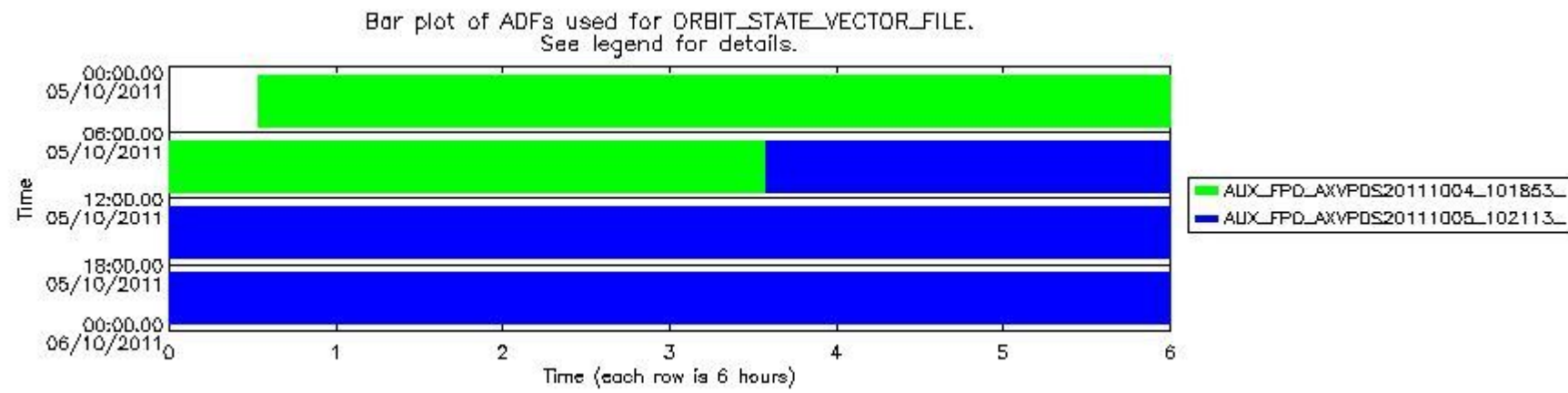
Number	ADF
0	AUX_CN0_AXVPDS20020123_121901_20020101_000000_20200101_000000
1	AUX_FPO_AXVPDS20111004_101853_20111003_184003_20111013_205347
2	AUX_FPO_AXVPDS20111005_102113_20111004_194332_20111014_201702

Number	Product name	#CN0	#FPO
--------	--------------	------	------

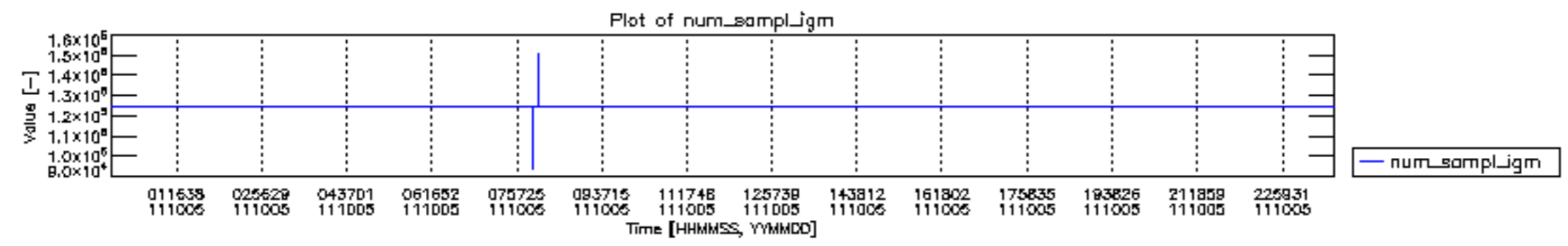
0	MIP_NL__0PNPDE20111005_003209_000058203107_00174_50188_9772.N1	0	1
1	MIP_NL__0PNPDE20111005_020722_000046463107_00175_50189_9773.N1	0	1
2	MIP_NL__0PNPDE20111005_032415_000061293107_00176_50190_9774.N1	0	1
3	MIP_NL__0PNPDE20111005_050551_000060003107_00177_50191_9775.N1	0	1
4	MIP_NL__0PNPDK20111005_064517_000041323107_00178_50192_7215.N1	0	1
5	MIP_NL__0PNPDK20111005_075336_000061273107_00179_50193_7216.N1	0	1
6	MIP_NL__0PNPDK20111005_093459_000059833107_00180_50194_7217.N1	0	2
7	MIP_NL__0PNPDK20111005_111401_000059063107_00181_50195_7218.N1	0	2
8	MIP_NL__0PNPDK20111005_125128_000059483107_00182_50196_7219.N1	0	2
9	MIP_NL__0PNPDK20111005_142859_000060103107_00183_50197_7220.N1	0	2
10	MIP_NL__0PNPDK20111005_160731_000059393107_00184_50198_7221.N1	0	2
11	MIP_NL__0PNPDK20111005_174534_000058833107_00185_50199_7222.N1	0	2
12	MIP_NL__0PNPDK20111005_192224_000061753107_00186_50200_7223.N1	0	2
13	MIP_NL__0PNPDE20111005_210433_000042073107_00187_50201_9776.N1	0	2
14	MIP_NL__0PNPDE20111005_221337_000061383107_00187_50201_9777.N1	0	2
15	MIP_NL__0PNPDE20111005_235455_000060353107_00188_50202_9778.N1	0	2

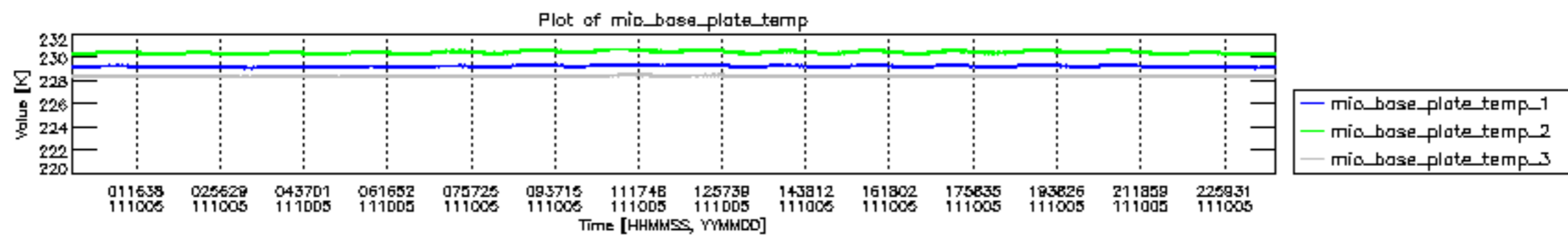


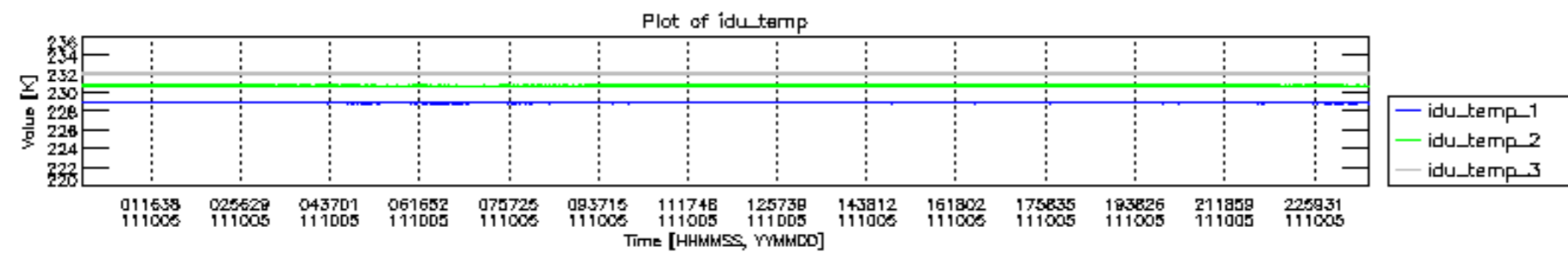
mipas_daily_report_level0_KSPT_L0_4504_N_20111005_12.PNG

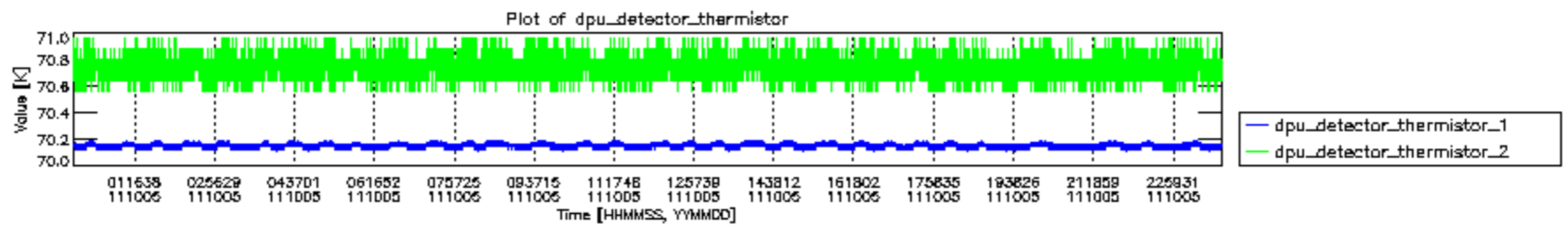


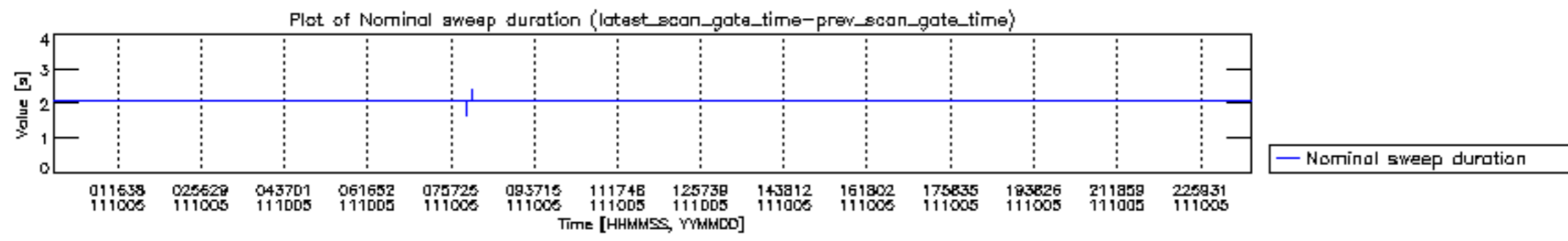
mipas_daily_report_level0_KSPT_L0_4504_N_20111005_13.PNG

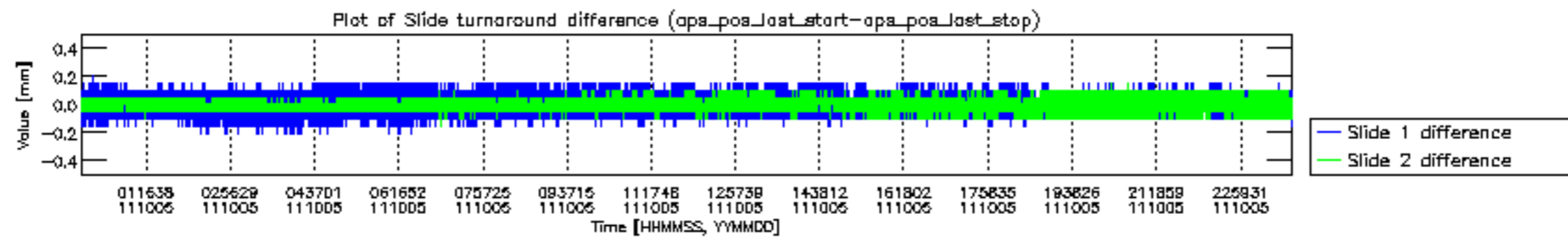


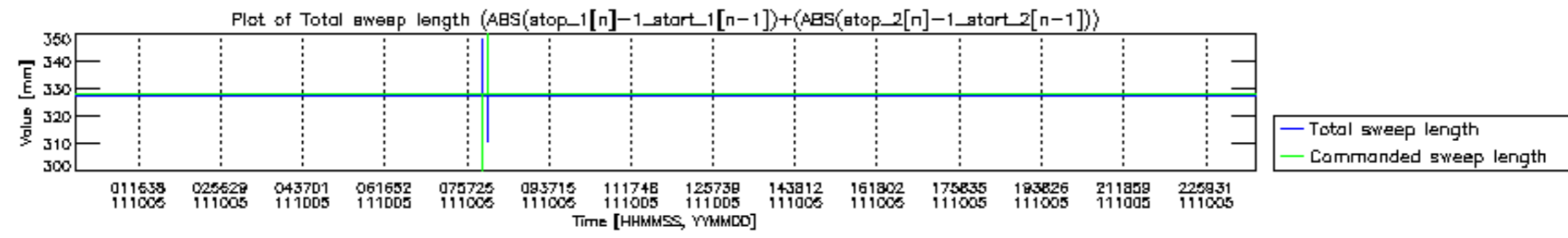


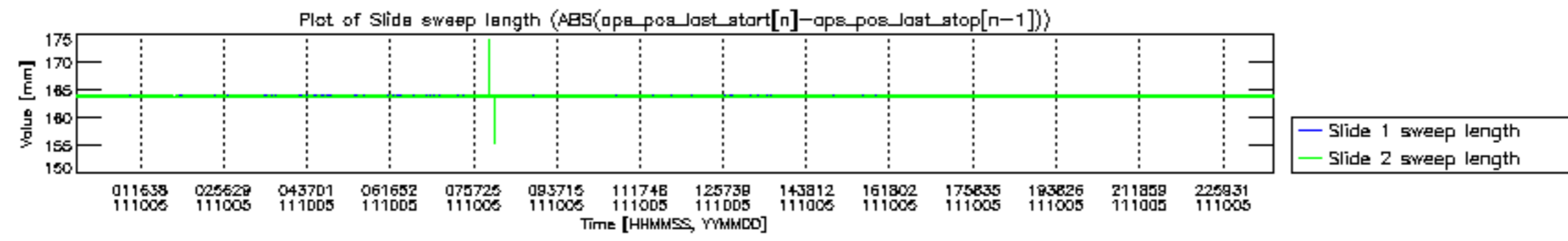


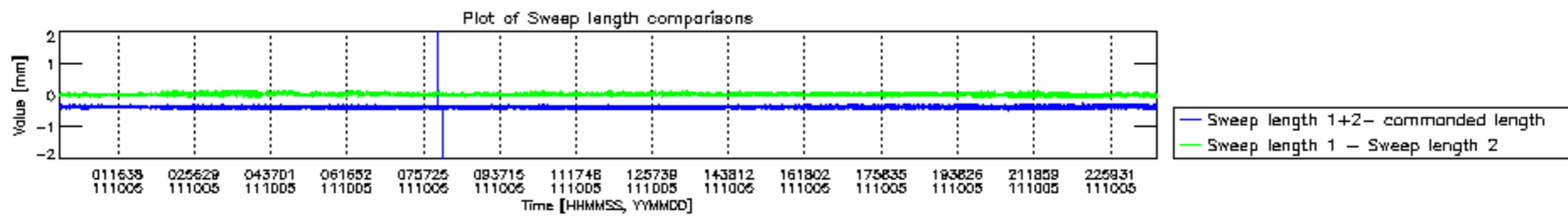


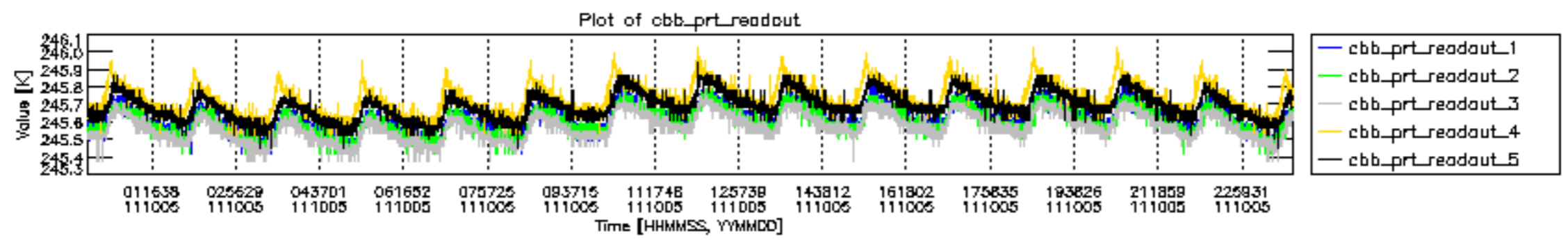


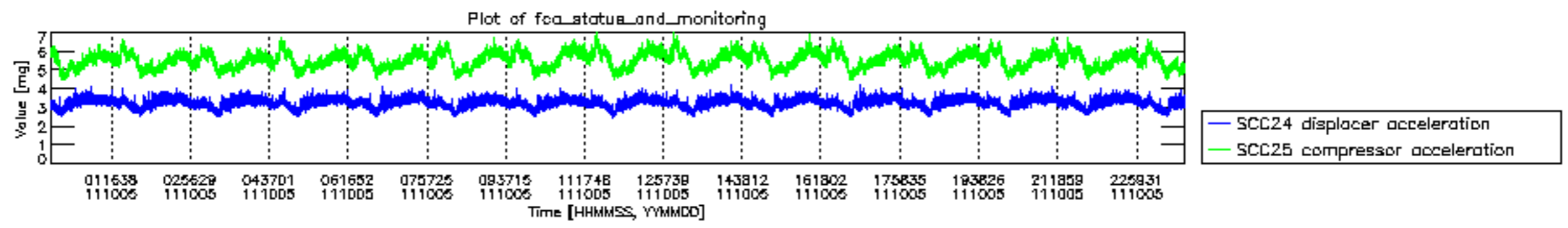












MIPNLOP_MIPSOUPAC_aux_fields_igm_cal, channel statistics plot
 Colour indicates value.

