

## 0. MIPAS Daily Report for level 0 products

### [0.1 General Info](#)

### [0.2 Instrument Operational Performance Parameters](#)

### [0.3 ADF monitoring](#)

## 0.1 General Info

This report contains a daily analysis on parameters extracted from MIPAS level 0 data (The MIP\_NL\_\_0P product).

### 0.1.1 Report summary

The table below shows general characteristics of the data that are included into this report.

Item	Value
Report version	v1.6 08-11-2010
Time of report generation	07OCT2011 05:24:54
Data source version	KSPT_L0/4504-N
Processing scope for products	02OCT2011 00:00:00 to 03OCT2011 00:00:00
Start time of first product within scope	02OCT2011 00:43:02
Stop time of last product within scope	03OCT2011 00:05:56
Total number of level 0 products	17
Number of level 0 products with errors	2

### 0.1.2 Product Quality Indicators per product

The following table shows a summary for each product used in this report.

#	Product name	Start time	Stop time	Prod err	ISP err sign	ISP miss sign	ISP disc sign	rs sign
0	MIP_NL__0PNPDE20111002_004302_000057653107_00131_50145_9753.N1	02OCT2011 00:43:02	02OCT2011 02:19:07	0	0	0	0	0
1	MIP_NL__0PNPDE20111002_010204_000046273107_00132_50146_4590.N1	02OCT2011 01:02:04	02OCT2011 02:19:11	0	0	0	0	0
2	MIP_NL__0PNPDE20111002_021727_000046383107_00132_50146_9754.N1	02OCT2011 02:17:27	02OCT2011 03:34:45	0	0	0	0	0
3	MIP_NL__0PNPDE20111002_033409_000061273107_00133_50147_9755.N1	02OCT2011 03:34:09	02OCT2011 05:16:16	0	0	0	0	0
4	MIP_NL__0PNPDE20111002_051543_000060503107_00134_50148_9756.N1	02OCT2011 05:15:43	02OCT2011 06:56:33	0	0	0	0	0
5	MIP_NL__0PNPDK20111002_065559_000040513107_00135_50149_7186.N1	02OCT2011 06:55:59	02OCT2011 08:03:30	0	0	0	0	0
6	MIP_NL__0PNPDK20111002_080250_000061753107_00136_50150_7187.N1	02OCT2011 08:02:50	02OCT2011 09:45:45	0	0	0	0	0
7	MIP_NL__0PNPDK20111002_094503_000059123107_00137_50151_7188.N1	02OCT2011 09:45:03	02OCT2011 11:23:35	0	0	0	0	0
8	MIP_NL__0PNPDK20111002_112209_000060873107_00138_50152_7189.N1	02OCT2011 11:22:09	02OCT2011 13:03:37	0	0	0	0	0
9	MIP_NL__0PNPDK20111002_130240_000059273107_00139_50153_7190.N1	02OCT2011 13:02:40	02OCT2011 14:41:27	1	1	0	0	0
10	MIP_NL__0PNPDK20111002_143949_000057993107_00140_50154_7191.N1	02OCT2011 14:39:49	02OCT2011 16:16:28	0	0	0	0	0
11	MIP_NL__0PNPDK20111002_161531_000051833107_00141_50155_7192.N1	02OCT2011 16:15:31	02OCT2011 17:41:54	0	0	0	0	0
12	MIP_NL__0PNPDK20111002_174154_000008133107_00142_50156_7193.N1	02OCT2011 17:41:54	02OCT2011 17:55:27	0	0	0	0	0
13	MIP_NL__0PNPDK20111002_175437_000059123107_00142_50156_7194.N1	02OCT2011 17:54:37	02OCT2011 19:33:09	1	1	0	0	0
14	MIP_NL__0PNPDK20111002_193219_000061713107_00143_50157_7195.N1	02OCT2011 19:32:19	02OCT2011 21:15:10	0	0	0	0	0
15	MIP_NL__0PNPDE20111002_211426_000042223107_00144_50158_9757.N1	02OCT2011 21:14:26	02OCT2011 22:24:48	0	0	0	0	0
16	MIP_NL__0PNPDE20111002_222349_000061273107_00144_50158_9758.N1	02OCT2011 22:23:49	03OCT2011 00:05:56	0	0	0	0	0

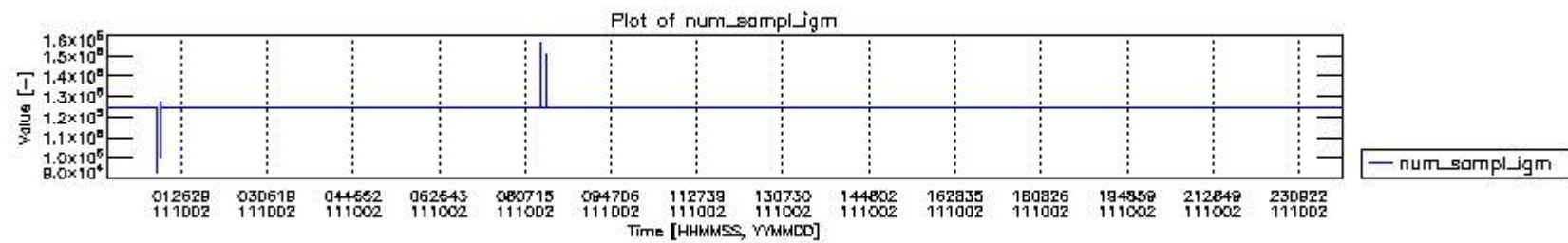
## 0.2 Instrument Operational Performance Parameters

The following plots give an overview of various instrument parameters for this day. The instrument parameters are part of the auxiliary data field within the source packets of the MIP\_NL\_\_0P product. The auxiliary data is normally included twice per interferogram. Note that only the first packet is currently included in monitoring.

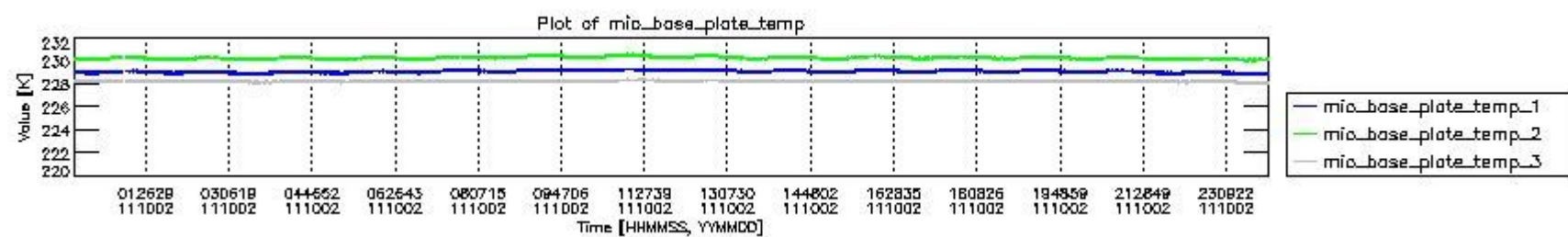
The following table shows the counts of various interferogram number of samples

Number of igm samples	Count [#]	Count [%]
92852	1	0.0024126034

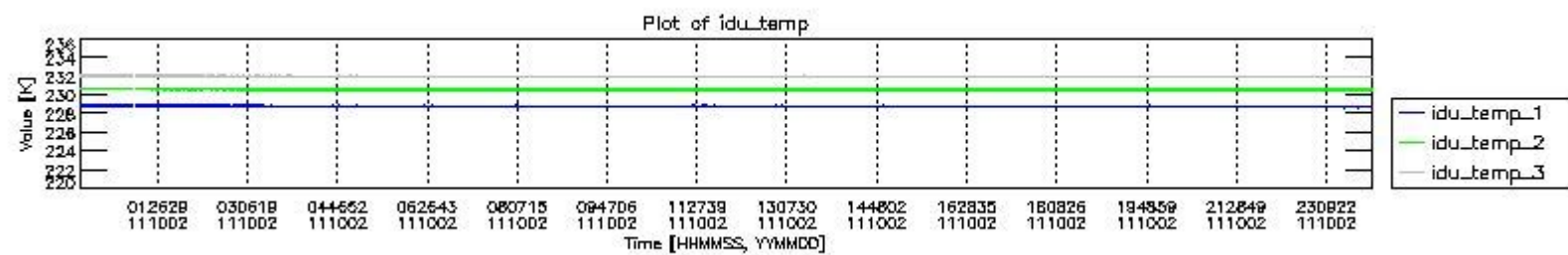
98760	1	0.0024126034
100706	1	0.0024126034
118895	1	0.0024126034
124800	38522	92.938310
124803	2915	7.0327390
125958	1	0.0024126034
127116	1	0.0024126034
127531	1	0.0024126034
130653	1	0.0024126034
147663	1	0.0024126034
150394	1	0.0024126034
150785	1	0.0024126034
156638	1	0.0024126034



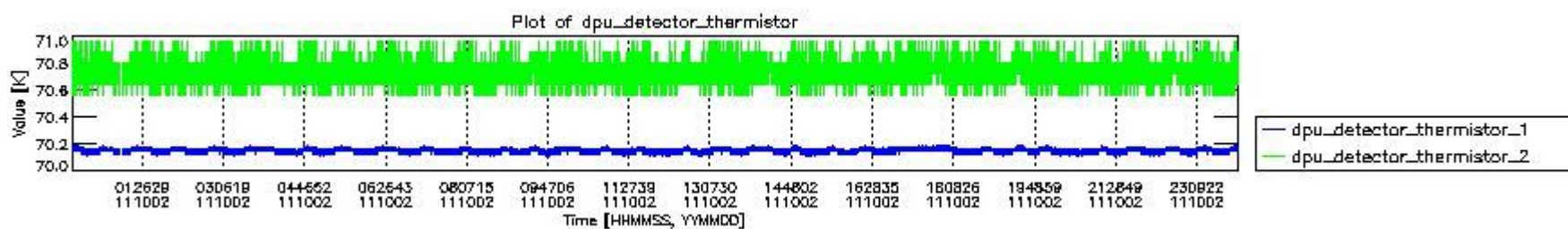
mipas\_daily\_report\_level0\_KSPT\_L0\_4504\_N\_20111002\_0.PNG



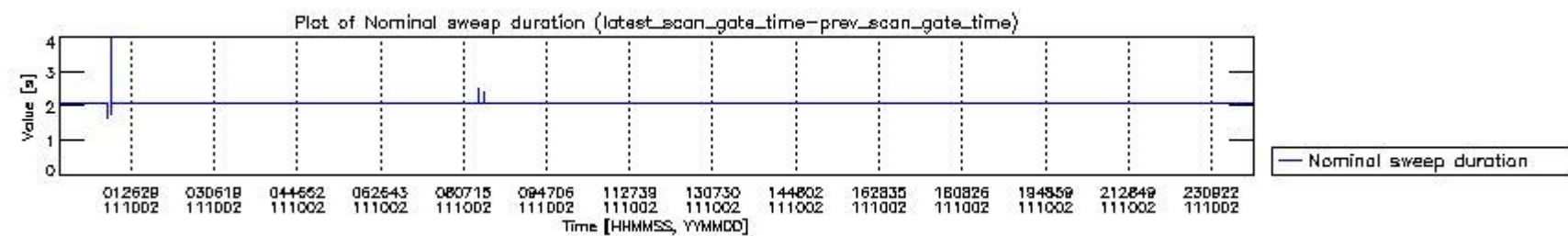
mipas\_daily\_report\_level0\_KSPT\_L0\_4504\_N\_20111002\_1.PNG



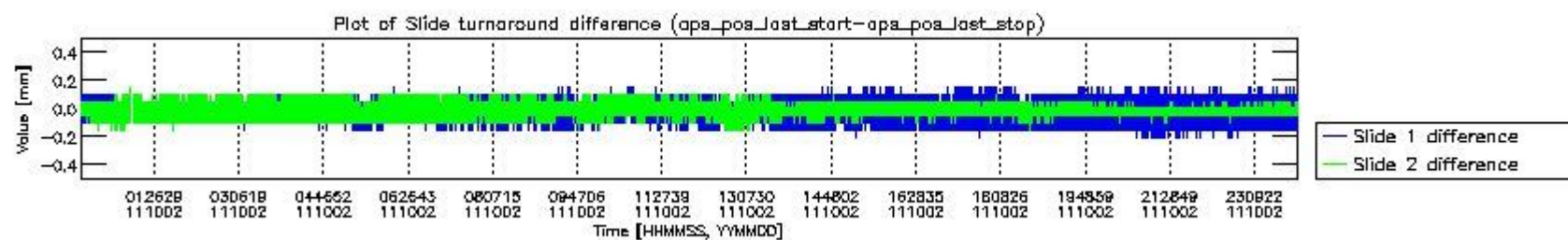
mipas\_daily\_report\_level0\_KSPT\_L0\_4504\_N\_20111002\_2.PNG



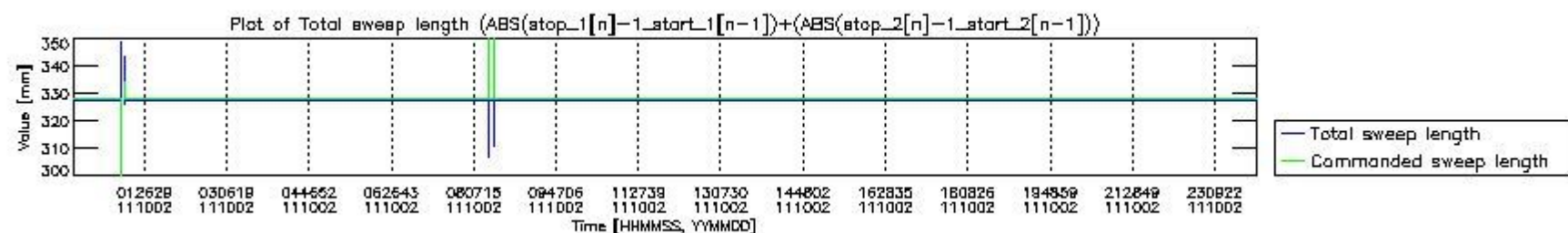
mipas\_daily\_report\_level0\_KSPT\_L0\_4504\_N\_20111002\_3.PNG



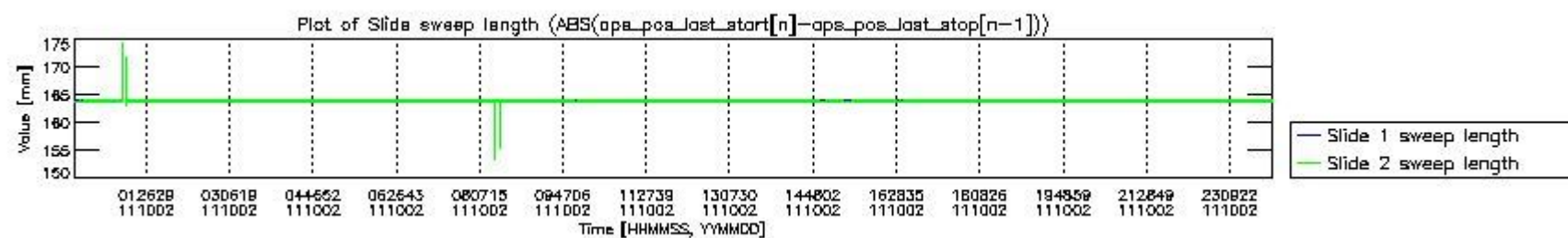
mipas\_daily\_report\_level0\_KSPT\_L0\_4504\_N\_20111002\_4.PNG



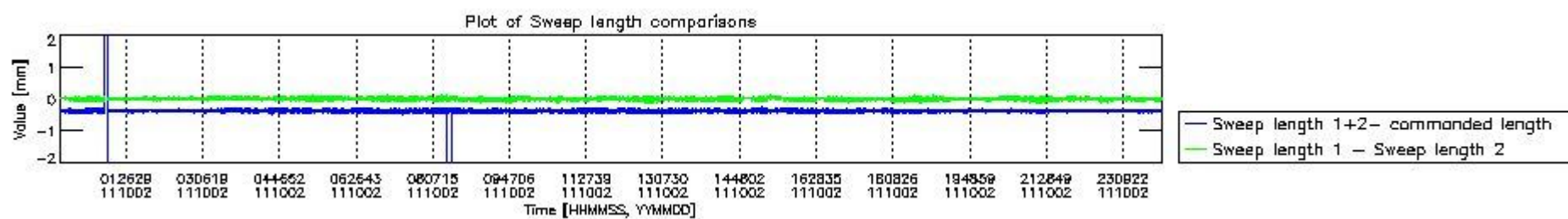
mipas\_daily\_report\_level0\_KSPT\_L0\_4504\_N\_20111002\_5.PNG



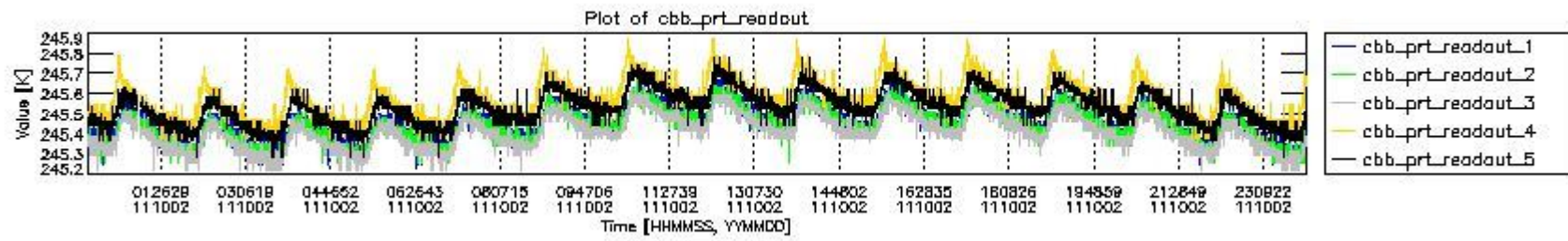
mipas\_daily\_report\_level0\_KSPT\_L0\_4504\_N\_20111002\_6.PNG



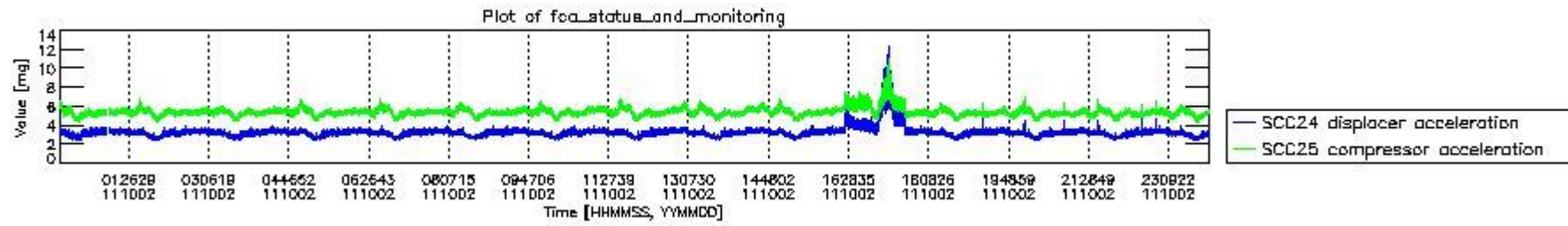
mipas\_daily\_report\_level0\_KSPT\_L0\_4504\_N\_20111002\_7.PNG



mipas\_daily\_report\_level0\_KSPT\_L0\_4504\_N\_20111002\_8.PNG



mipas\_daily\_report\_level0\_KSPT\_L0\_4504\_N\_20111002\_9.PNG

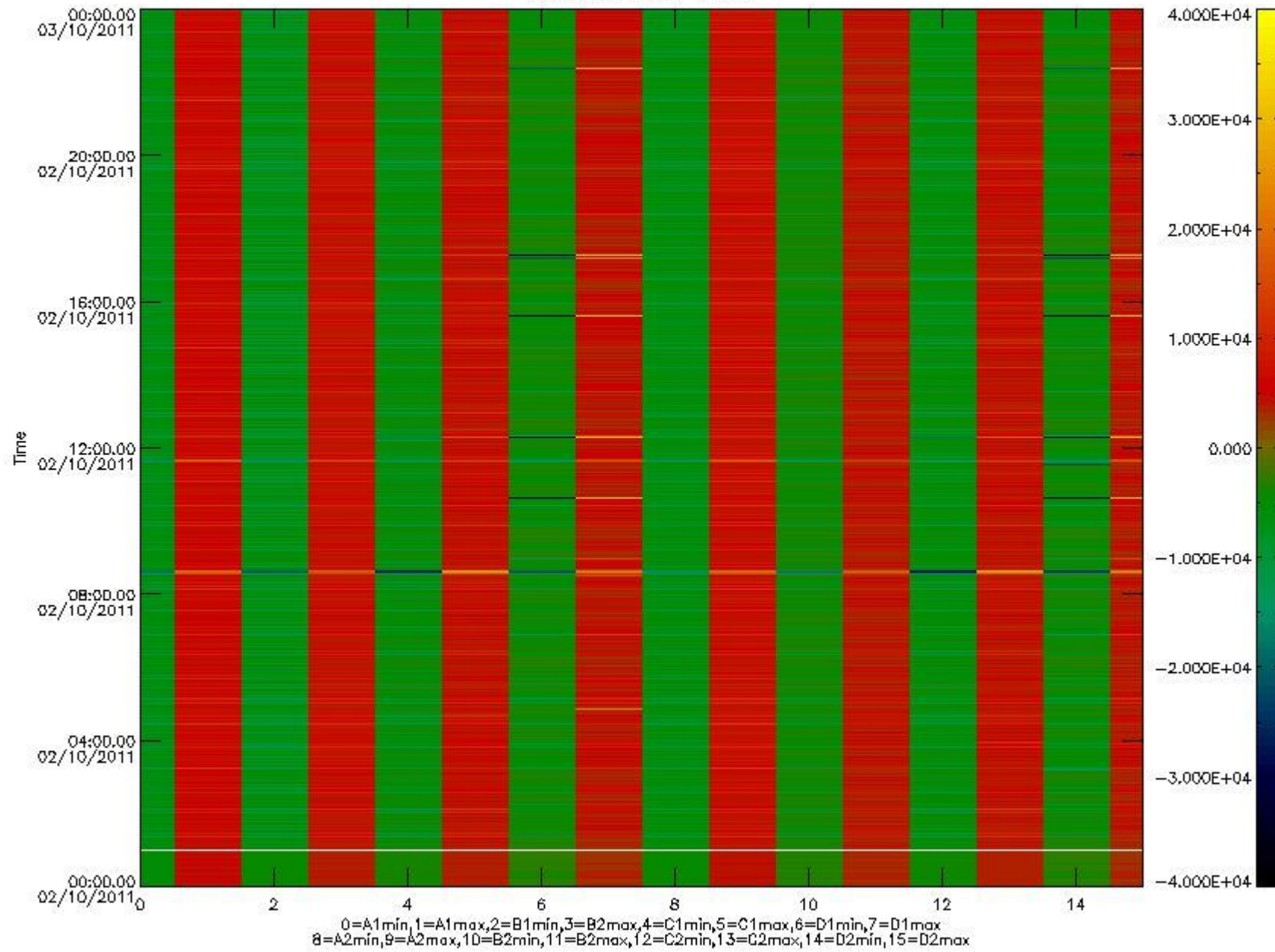


mipas\_daily\_report\_level0\_KSPT\_L0\_4504\_N\_20111002\_10.PNG

The following table shows channel statistics for all channels for this day.

Channel	Min	Max	ADC
A1	-18159	19287	16bit
B1	-20583	17696	16bit
C1	-25451	25280	16bit
D1	-32768	32767	16bit
A2	-15776	19519	16bit
B2	-18578	18244	16bit
C2	-26535	26052	16bit
D2	-32768	32767	16bit

MIPNLOP\_MIPSOUPAC\_aux\_fields\_igm\_cal, channel statistics plot  
Colour indicates value.



mipas\_daily\_report\_level0\_KSPT\_L0\_4504\_N\_20111002\_11.PNG

### 0.3 ADF monitoring

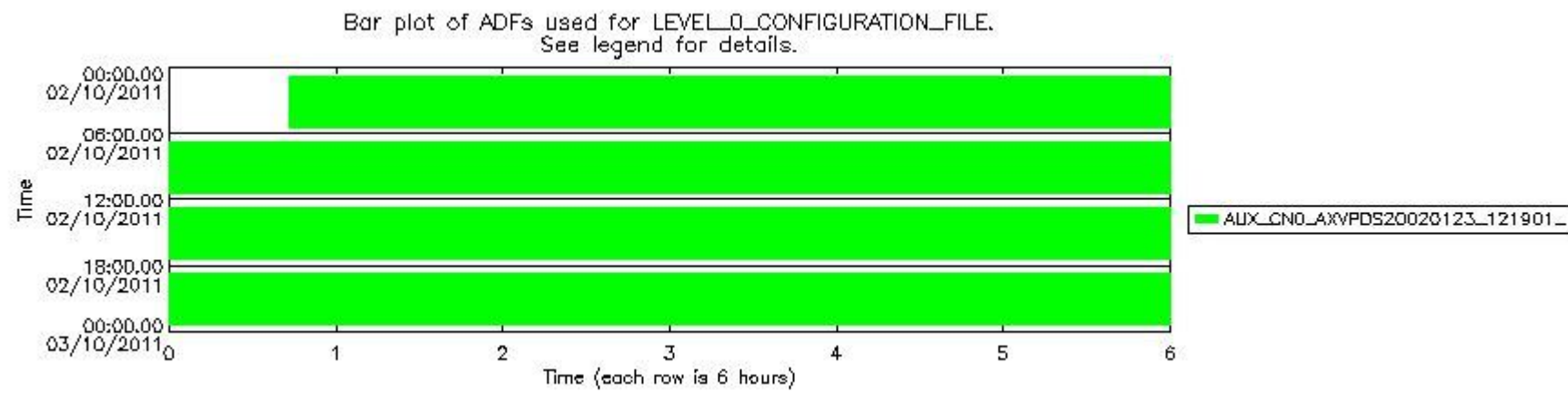
The use of ADFs is shown in two ways:

1. By means of two tables that can be used to find the ADF used for a specific product.
2. By means of plots that show changes in ADF using colours.

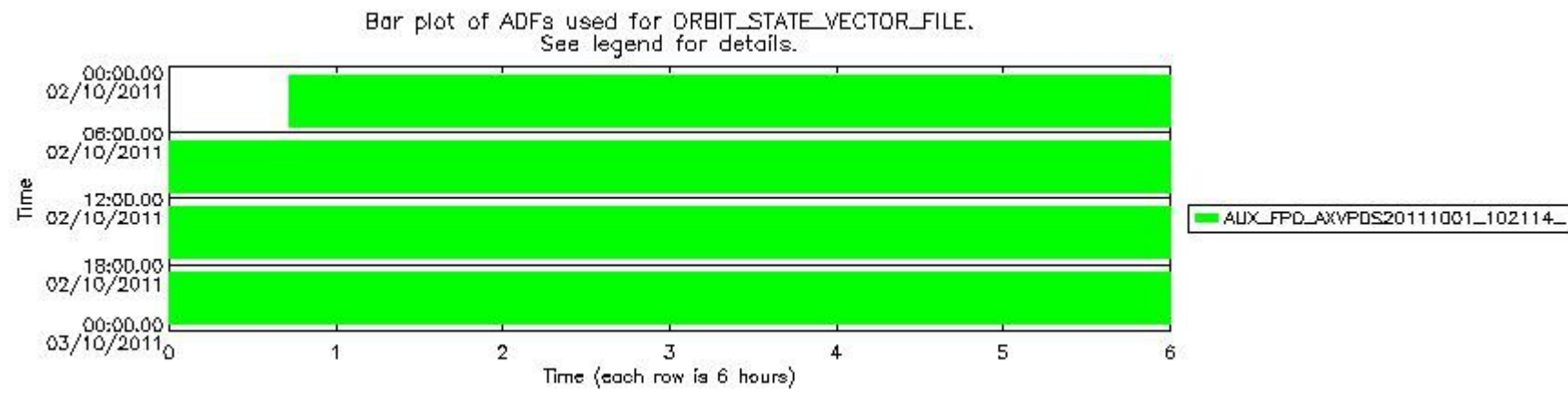
Number	ADF
0	AUX_CN0_AXVPDS20020123_121901_20020101_000000_20200101_000000
1	AUX_FPO_AXVPDS20111001_102114_20110930_185003_20111010_210347

Number	Product name	#CN0	#FPO
0	MIP_NL_0PNPDE20111002_004302_000057653107_00131_50145_9753.N1	0	1

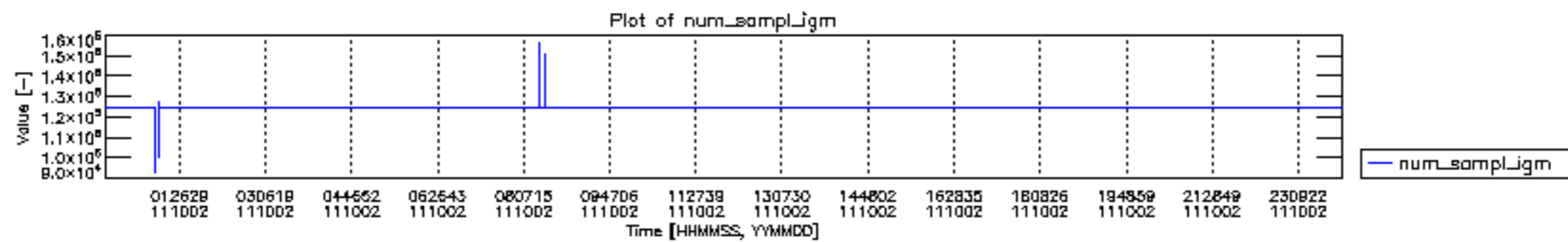
1	MIP_NL__0PNPDE20111002_010204_000046273107_00132_50146_4590.N1	0	1
2	MIP_NL__0PNPDE20111002_021727_000046383107_00132_50146_9754.N1	0	1
3	MIP_NL__0PNPDE20111002_033409_000061273107_00133_50147_9755.N1	0	1
4	MIP_NL__0PNPDE20111002_051543_000060503107_00134_50148_9756.N1	0	1
5	MIP_NL__0PNPDK20111002_065559_000040513107_00135_50149_7186.N1	0	1
6	MIP_NL__0PNPDK20111002_080250_000061753107_00136_50150_7187.N1	0	1
7	MIP_NL__0PNPDK20111002_094503_000059123107_00137_50151_7188.N1	0	1
8	MIP_NL__0PNPDK20111002_112209_000060873107_00138_50152_7189.N1	0	1
9	MIP_NL__0PNPDK20111002_130240_000059273107_00139_50153_7190.N1	0	1
10	MIP_NL__0PNPDK20111002_143949_000057993107_00140_50154_7191.N1	0	1
11	MIP_NL__0PNPDK20111002_161531_000051833107_00141_50155_7192.N1	0	1
12	MIP_NL__0PNPDK20111002_174154_000008133107_00142_50156_7193.N1	0	1
13	MIP_NL__0PNPDK20111002_175437_000059123107_00142_50156_7194.N1	0	1
14	MIP_NL__0PNPDK20111002_193219_000061713107_00143_50157_7195.N1	0	1
15	MIP_NL__0PNPDE20111002_211426_000042223107_00144_50158_9757.N1	0	1
16	MIP_NL__0PNPDE20111002_222349_000061273107_00144_50158_9758.N1	0	1

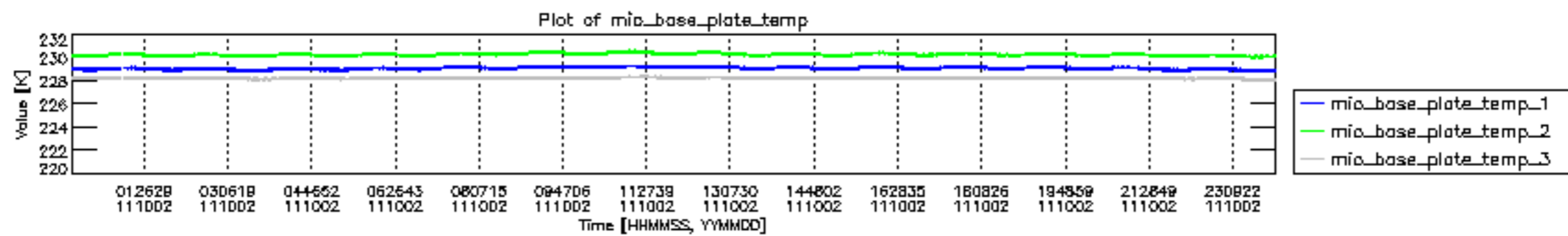


mipas\_daily\_report\_level0\_KSPT\_L0\_4504\_N\_20111002\_12.PNG

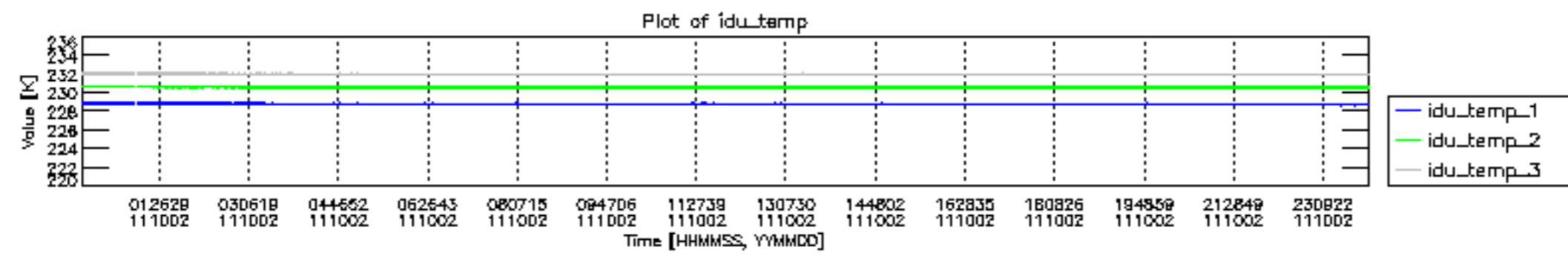


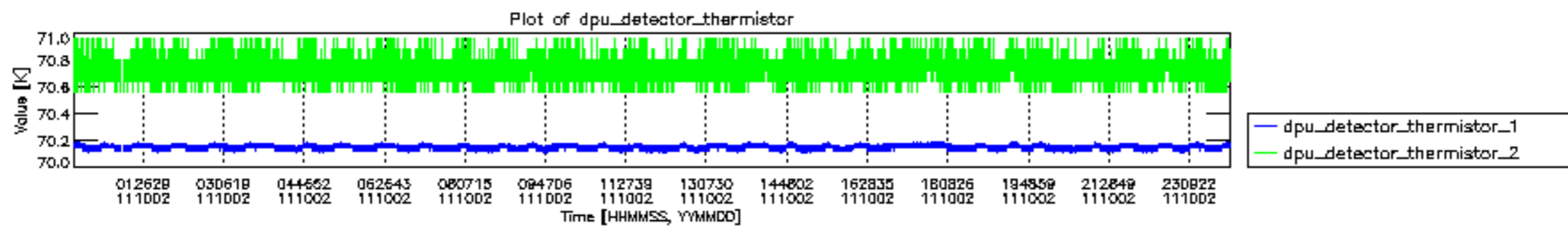
mipas\_daily\_report\_level0\_KSPT\_L0\_4504\_N\_20111002\_13.PNG

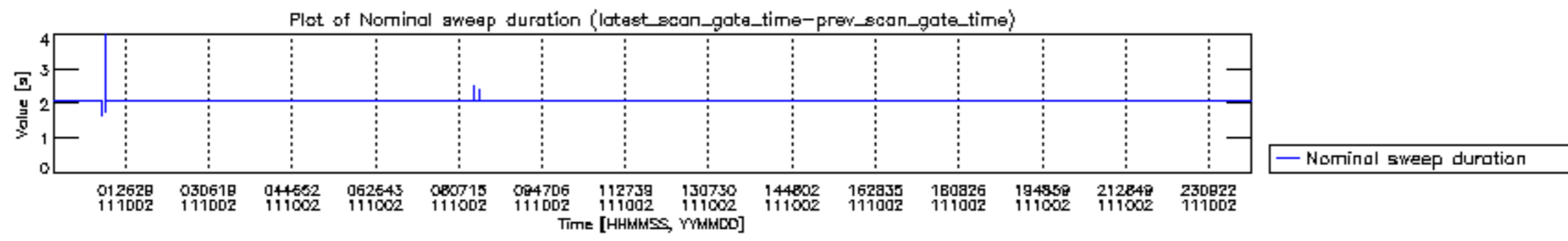


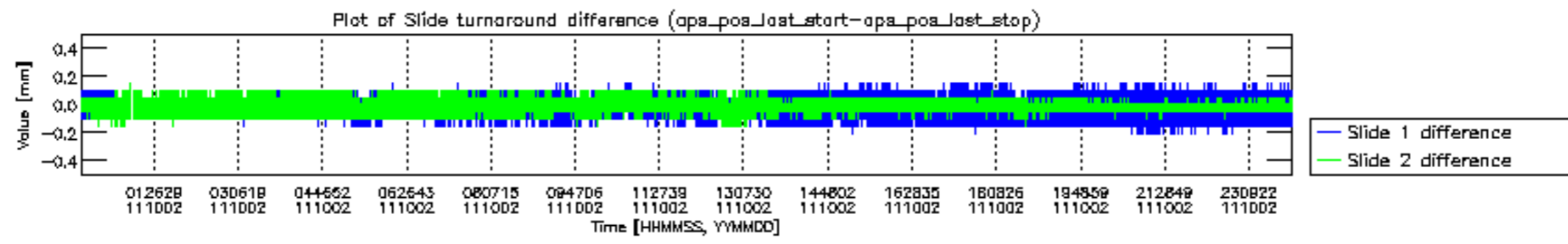


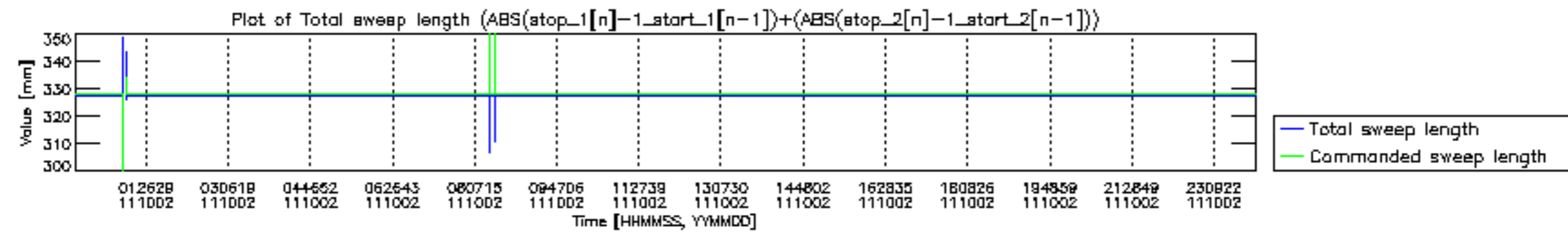


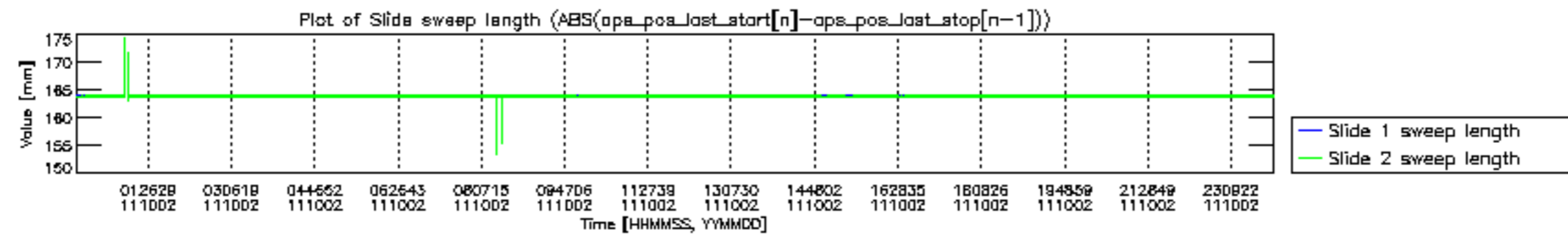


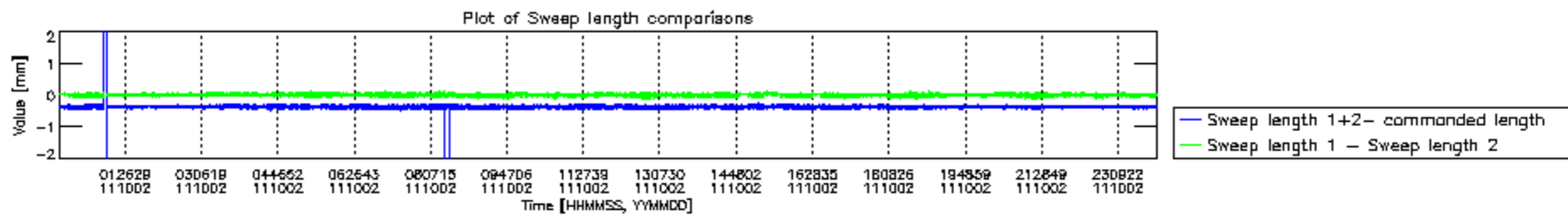


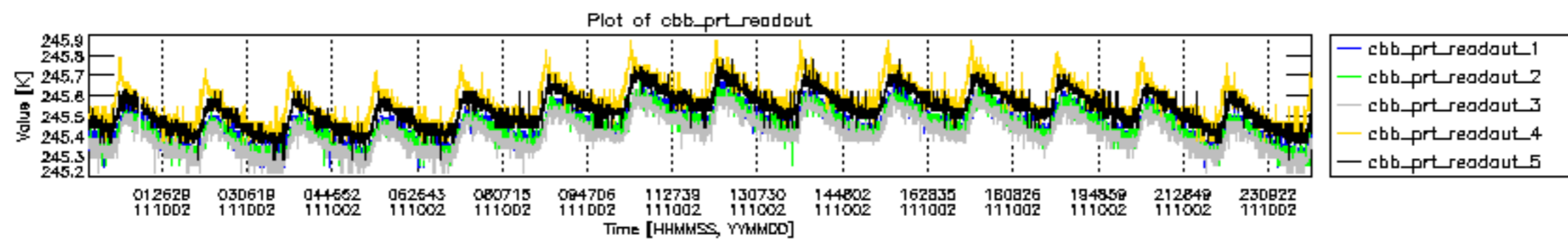




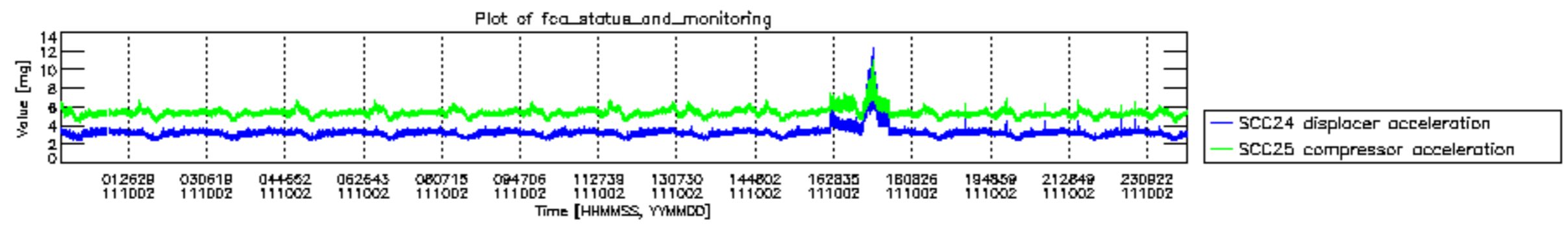












MIPNLOP\_MIPSOUPAC\_aux\_fields\_igm\_cal, channel statistics plot  
 Colour indicates value.

