

0. MIPAS Daily Report for level 0 products

[0.1 General Info](#)

[0.2 Instrument Operational Performance Parameters](#)

[0.3 ADF monitoring](#)

0.1 General Info

This report contains a daily analysis on parameters extracted from MIPAS level 0 data (The MIP_NL__0P product).

0.1.1 Report summary

The table below shows general characteristics of the data that are included into this report.

Item	Value
Report version	v1.6 08-11-2010
Time of report generation	06OCT2011 05:24:58
Data source version	KSPT_L0/4504-N
Processing scope for products	01OCT2011 00:00:00 to 02OCT2011 00:00:00
Start time of first product within scope	01OCT2011 01:17:53
Stop time of last product within scope	02OCT2011 00:44:02
Total number of level 0 products	13
Number of level 0 products with errors	0

0.1.2 Product Quality Indicators per product

The following table shows a summary for each product used in this report.

#	Product name	Start time	Stop time	Prod err	ISP err sign	ISP miss sign	ISP disc sign	rs sign
0	MIP_NL__0PNPDE20111001_011753_000103283107_00117_50131_9747.N1	01OCT2011 01:17:53	01OCT2011 04:10:01	0	0	0	0	0
1	MIP_NL__0PNPDE20111001_040928_000062213107_00119_50133_9748.N1	01OCT2011 04:09:28	01OCT2011 05:53:09	0	0	0	0	0
2	MIP_NL__0PNPDE20111001_055236_000061503107_00120_50134_9749.N1	01OCT2011 05:52:36	01OCT2011 07:35:06	0	0	0	0	0
3	MIP_NL__0PNPDK20111001_073432_000039403107_00121_50135_7178.N1	01OCT2011 07:34:32	01OCT2011 08:40:12	0	0	0	0	0
4	MIP_NL__0PNPDK20111001_083933_000060723107_00122_50136_7179.N1	01OCT2011 08:39:33	01OCT2011 10:20:45	0	0	0	0	0
5	MIP_NL__0PNPDK20111001_101955_000060233107_00123_50137_7180.N1	01OCT2011 10:19:55	01OCT2011 12:00:17	0	0	0	0	0
6	MIP_NL__0PNPDK20111001_115845_000060083107_00124_50138_7181.N1	01OCT2011 11:58:45	01OCT2011 13:38:53	0	0	0	0	0
7	MIP_NL__0PNPDK20111001_133757_000059453107_00125_50139_7182.N1	01OCT2011 13:37:57	01OCT2011 15:17:02	0	0	0	0	0
8	MIP_NL__0PNPDK20111001_151600_000058053107_00126_50140_7183.N1	01OCT2011 15:16:00	01OCT2011 16:52:45	0	0	0	0	0
9	MIP_NL__0PNPDK20111001_165145_000060233107_00127_50141_7184.N1	01OCT2011 16:51:45	01OCT2011 18:32:07	0	0	0	0	0
10	MIP_NL__0PNPDK20111001_183117_000059273107_00128_50142_7185.N1	01OCT2011 18:31:17	01OCT2011 20:10:04	0	0	0	0	0
11	MIP_NL__0PNPDE20111001_200859_000043723107_00129_50143_9750.N1	01OCT2011 20:08:59	01OCT2011 21:21:51	0	0	0	0	0
12	MIP_NL__0PNPDE20111001_230141_000061423107_00130_50144_9752.N1	01OCT2011 23:01:41	02OCT2011 00:44:02	0	0	0	0	0

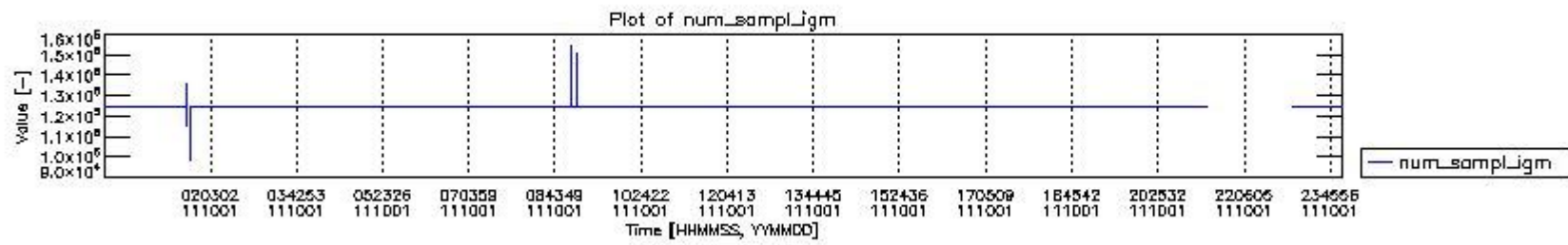
0.2 Instrument Operational Performance Parameters

The following plots give an overview of various instrument parameters for this day. The instrument parameters are part of the auxiliary data field within the source packets of the MIP_NL__0P product. The auxiliary data is normally included twice per interferogram. Note that only the first packet is currently included in monitoring.

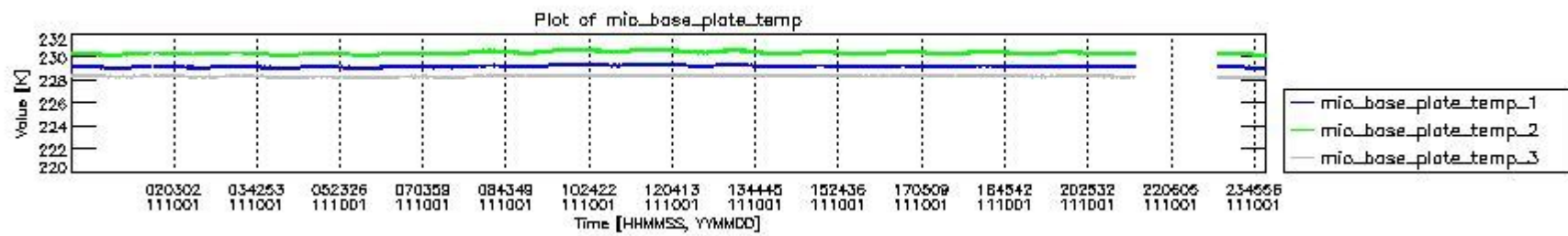
The following table shows the counts of various interferogram number of samples

Number of igm samples	Count [#]	Count [%]
98773	1	0.0025898684
115339	1	0.0025898684
123250	1	0.0025898684
124025	1	0.0025898684
124800	36367	94.185745

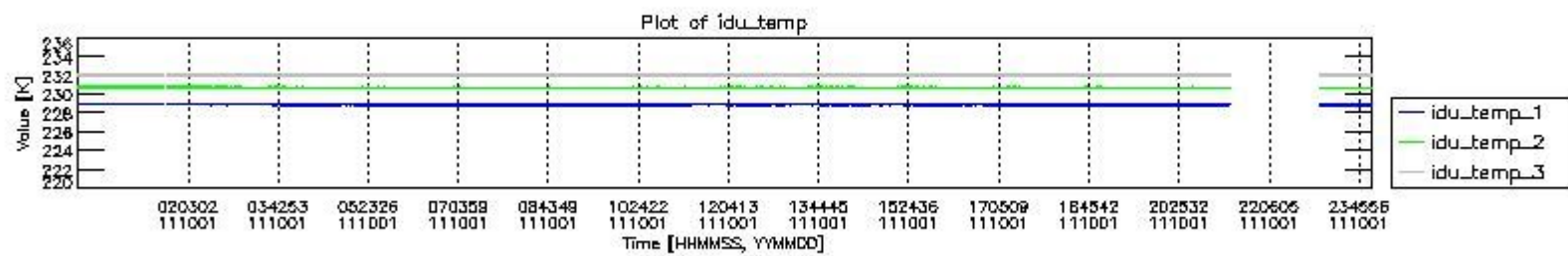
124803	2233	5.7831762
126010	1	0.0025898684
127531	1	0.0025898684
129686	1	0.0025898684
135471	1	0.0025898684
147663	1	0.0025898684
149818	1	0.0025898684
150394	1	0.0025898684
154704	1	0.0025898684



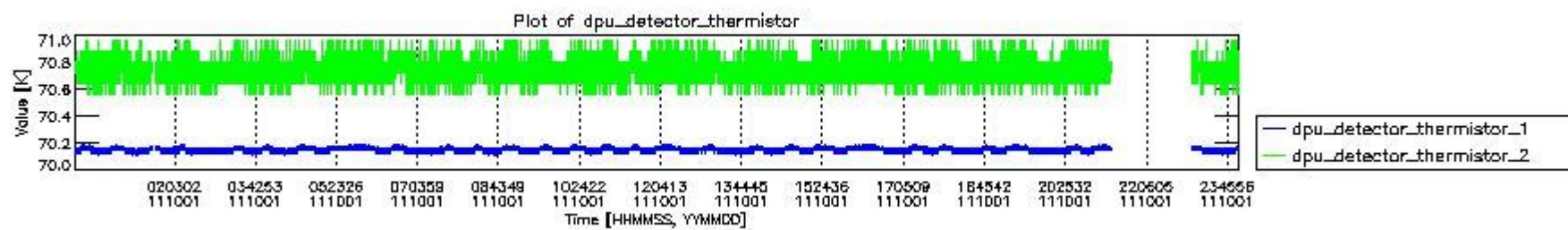
mipas_daily_report_level0_KSPT_L0_4504_N_20111001_0.PNG



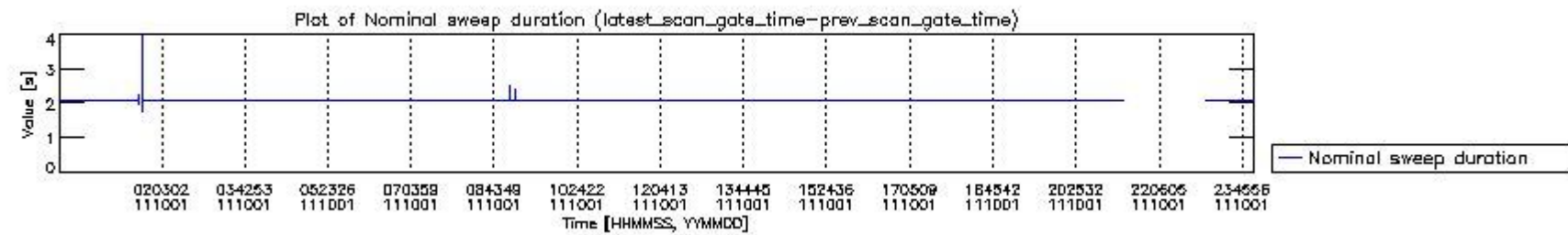
mipas_daily_report_level0_KSPT_L0_4504_N_20111001_1.PNG



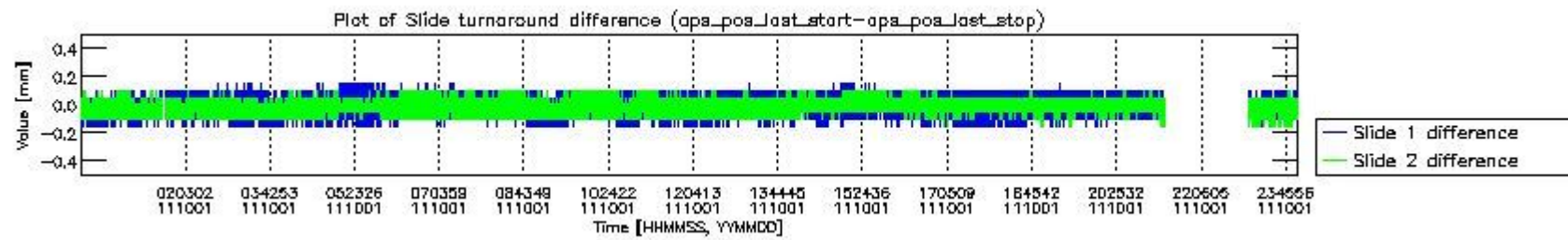
mipas_daily_report_level0_KSPT_L0_4504_N_20111001_2.PNG



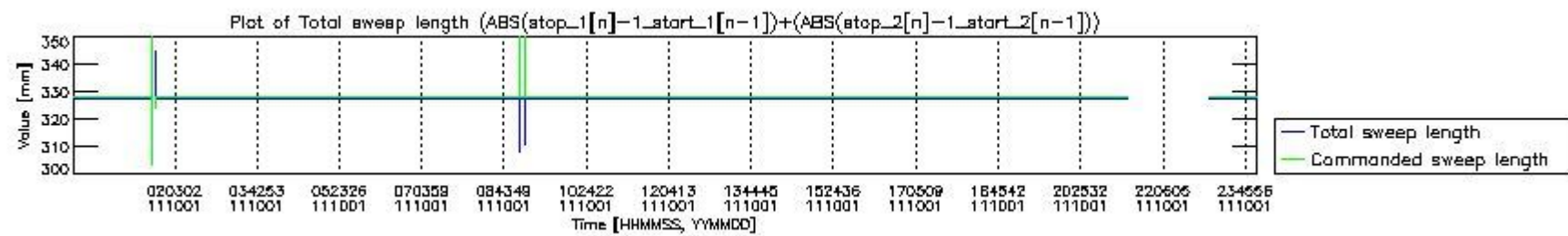
mipas_daily_report_level0_KSPT_L0_4504_N_20111001_3.PNG



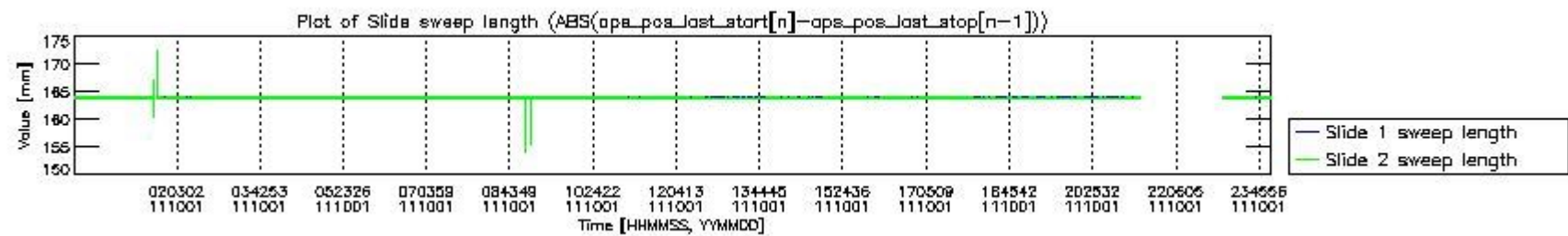
mipas_daily_report_level0_KSPT_L0_4504_N_20111001_4.PNG



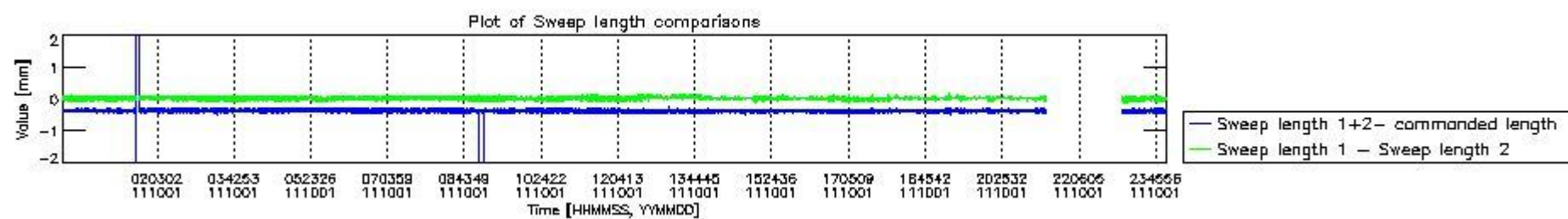
mipas_daily_report_level0_KSPT_L0_4504_N_20111001_5.PNG



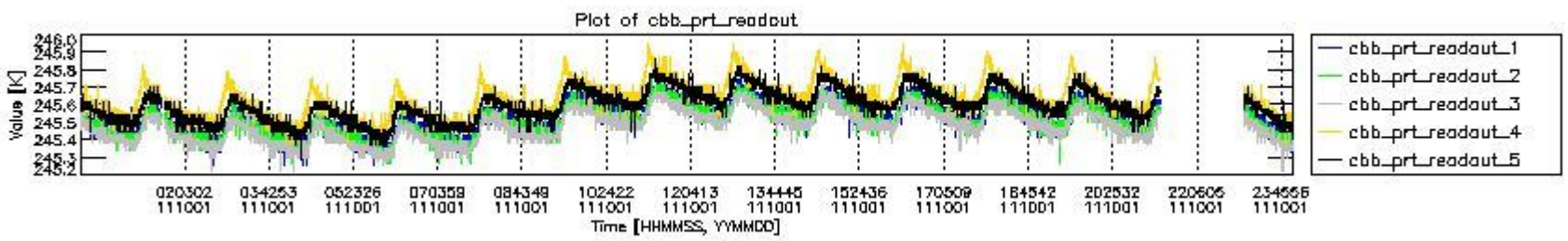
mipas_daily_report_level0_KSPT_L0_4504_N_20111001_6.PNG



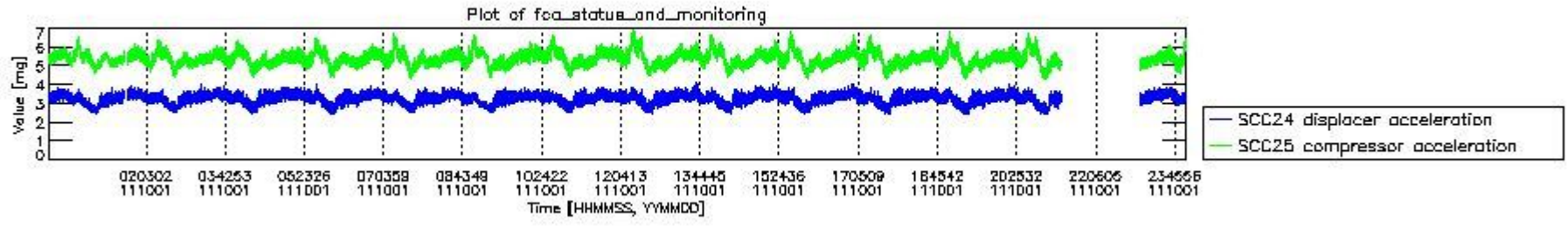
mipas_daily_report_level0_KSPT_L0_4504_N_20111001_7.PNG



mipas_daily_report_level0_KSPT_L0_4504_N_20111001_8.PNG



mipas_daily_report_level0_KSPT_L0_4504_N_20111001_9.PNG

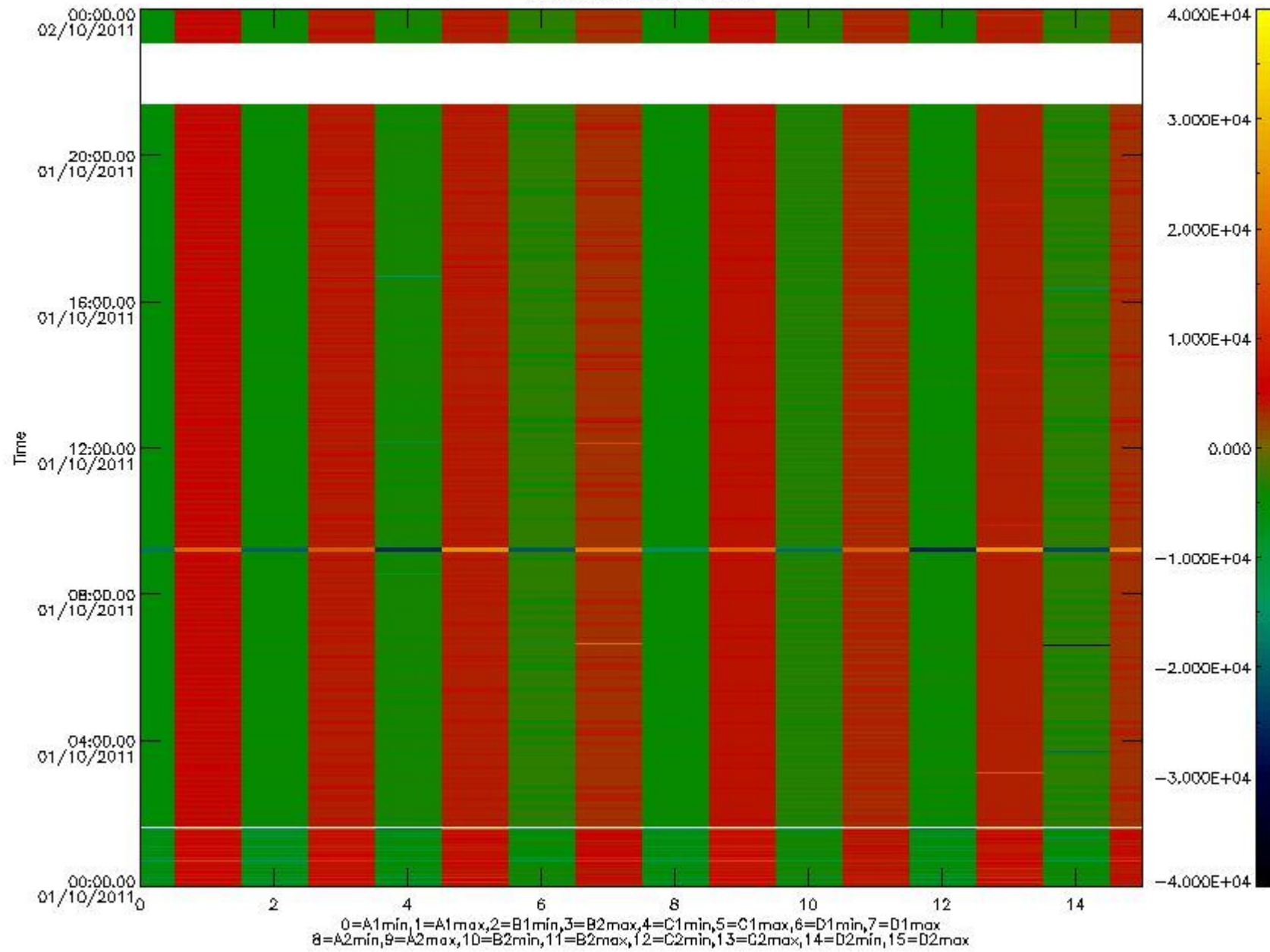


mipas_daily_report_level0_KSPT_L0_4504_N_20111001_10.PNG

The following table shows channel statistics for all channels for this day.

Channel	Min	Max	ADC
A1	-18181	19301	16bit
B1	-20639	17720	16bit
C1	-25547	25463	16bit
D1	-32768	32767	16bit
A2	-15789	19534	16bit
B2	-18646	18317	16bit
C2	-26651	26224	16bit
D2	-32768	32767	16bit

MIPNLOP_MIPSOUPAC_aux_fields_igm_cal, channel statistics plot
Colour indicates value.



mipas_daily_report_level0_KSPT_L0_4504_N_20111001_11.PNG

0.3 ADF monitoring

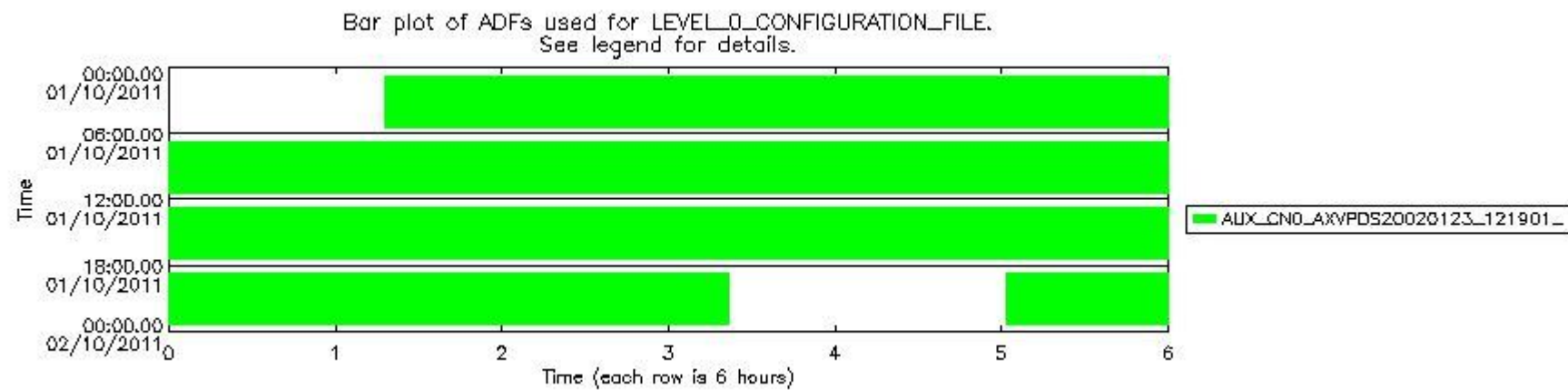
The use of ADFs is shown in two ways:

1. By means of two tables that can be used to find the ADF used for a specific product.
2. By means of plots that show changes in ADF using colours.

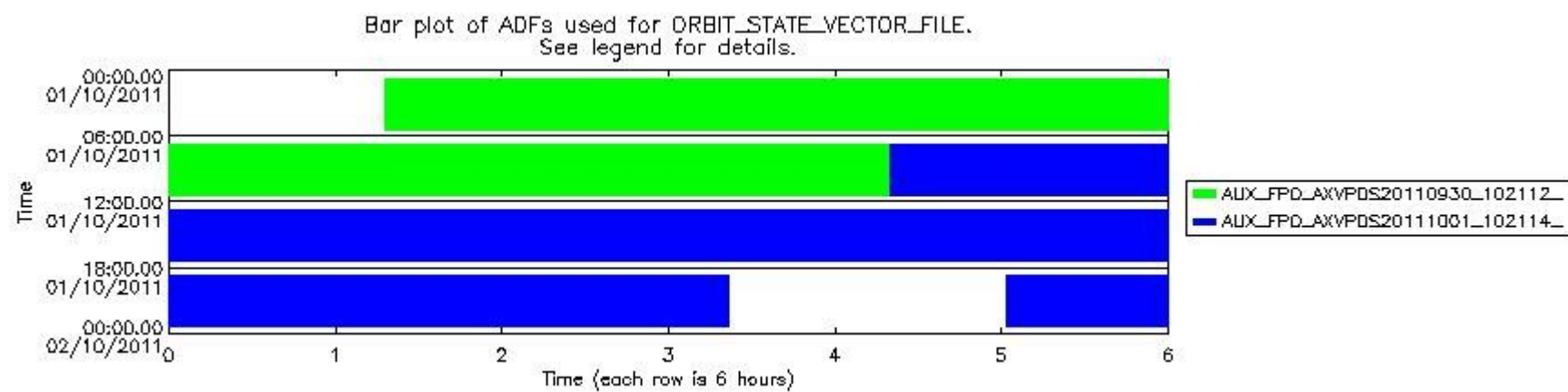
Number	ADF
0	AUX_CN0_AXVPDS20020123_121901_20020101_000000_20200101_000000
1	AUX_FPO_AXVPDS20110930_102112_20110929_192647_20111009_214031
2	AUX_FPO_AXVPDS20111001_102114_20110930_185003_20111010_210347

Number	Product name	#CN0	#FPO
--------	--------------	------	------

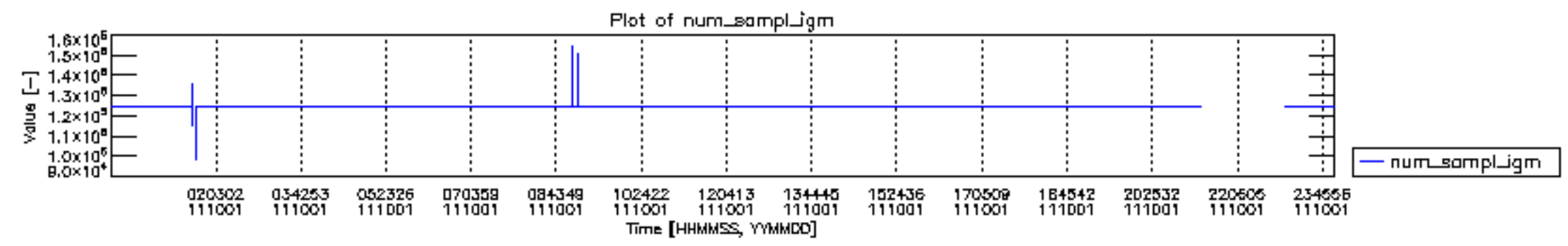
0	MIP_NL__0PNPDE20111001_011753_000103283107_00117_50131_9747.N1	0	1
1	MIP_NL__0PNPDE20111001_040928_000062213107_00119_50133_9748.N1	0	1
2	MIP_NL__0PNPDE20111001_055236_000061503107_00120_50134_9749.N1	0	1
3	MIP_NL__0PNPDK20111001_073432_000039403107_00121_50135_7178.N1	0	1
4	MIP_NL__0PNPDK20111001_083933_000060723107_00122_50136_7179.N1	0	1
5	MIP_NL__0PNPDK20111001_101955_000060233107_00123_50137_7180.N1	0	2
6	MIP_NL__0PNPDK20111001_115845_000060083107_00124_50138_7181.N1	0	2
7	MIP_NL__0PNPDK20111001_133757_000059453107_00125_50139_7182.N1	0	2
8	MIP_NL__0PNPDK20111001_151600_000058053107_00126_50140_7183.N1	0	2
9	MIP_NL__0PNPDK20111001_165145_000060233107_00127_50141_7184.N1	0	2
10	MIP_NL__0PNPDK20111001_183117_000059273107_00128_50142_7185.N1	0	2
11	MIP_NL__0PNPDE20111001_200859_000043723107_00129_50143_9750.N1	0	2
12	MIP_NL__0PNPDE20111001_230141_000061423107_00130_50144_9752.N1	0	2

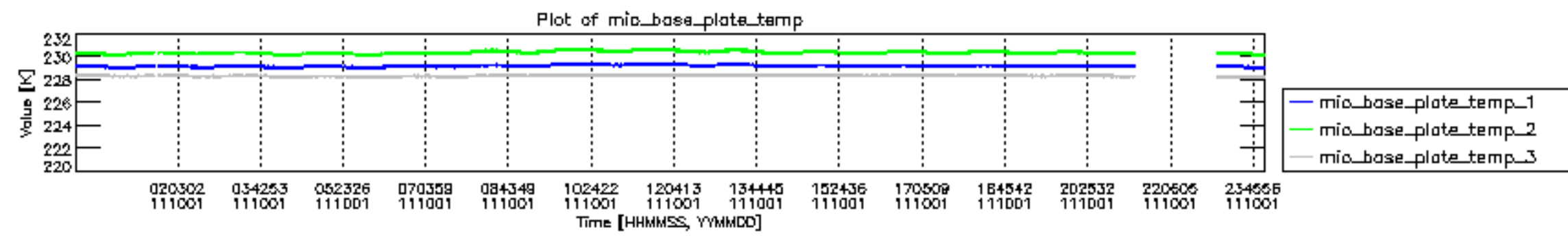


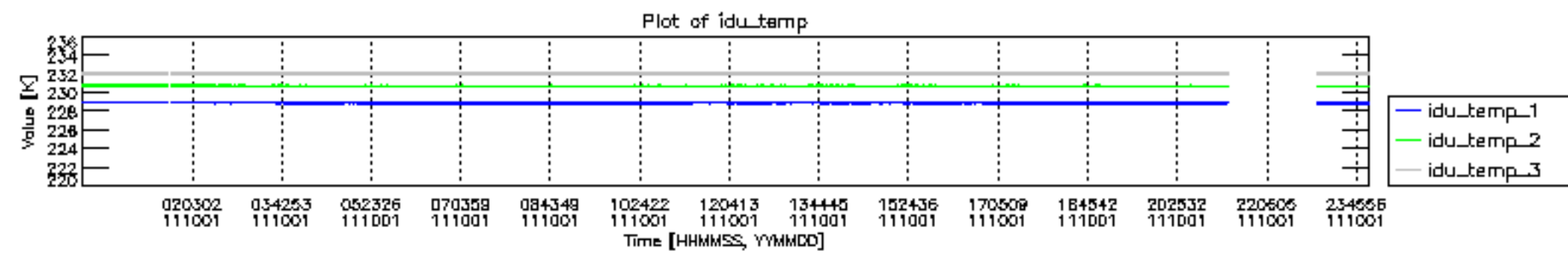
mipas_daily_report_level0_KSPT_L0_4504_N_20111001_12.PNG

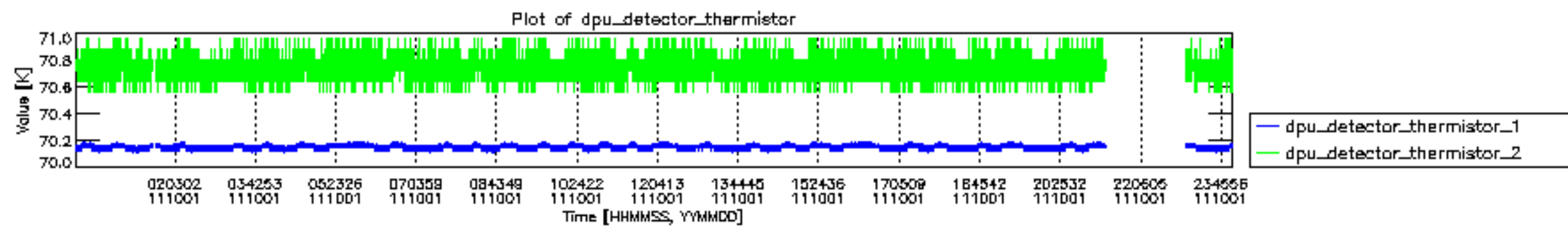


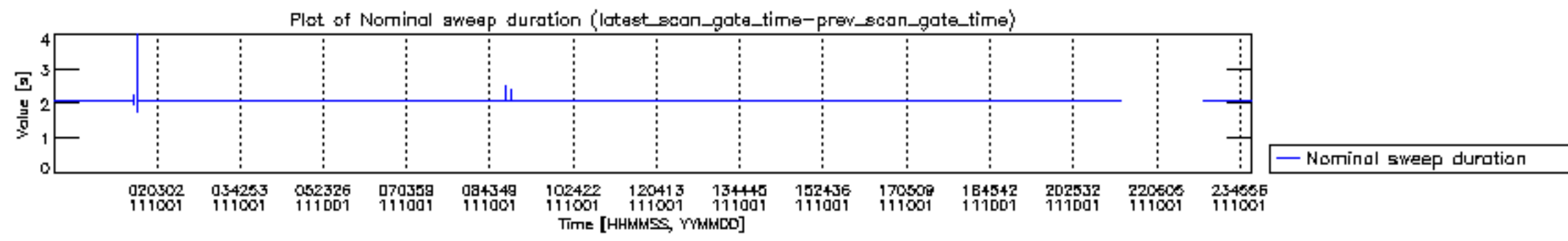
mipas_daily_report_level0_KSPT_L0_4504_N_20111001_13.PNG

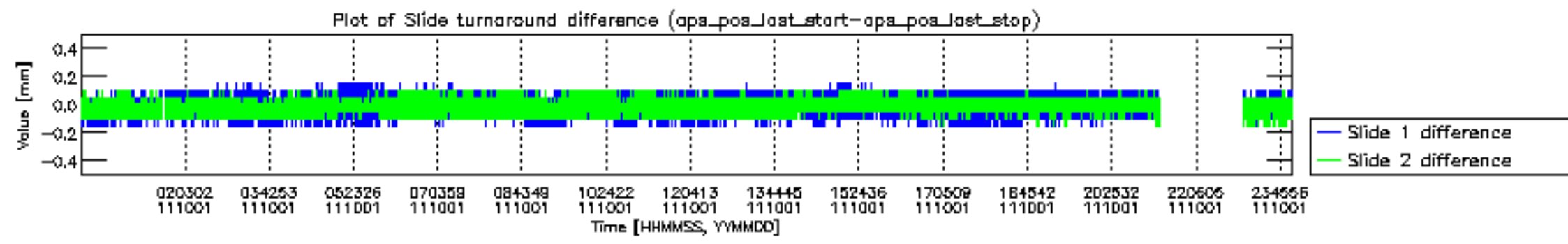


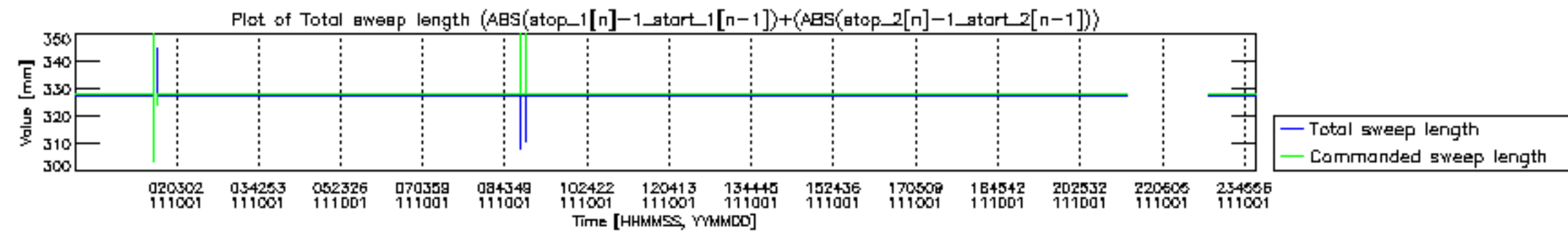


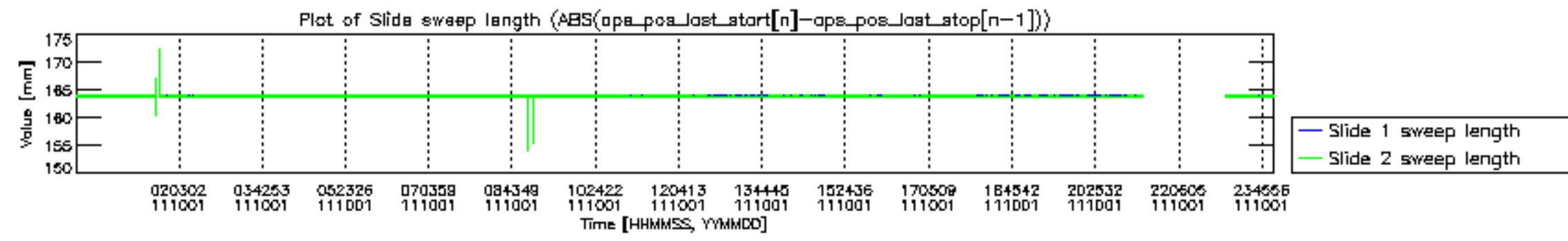


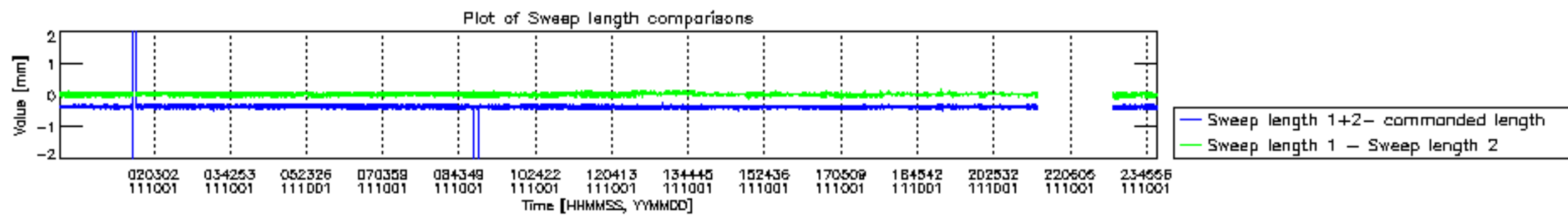


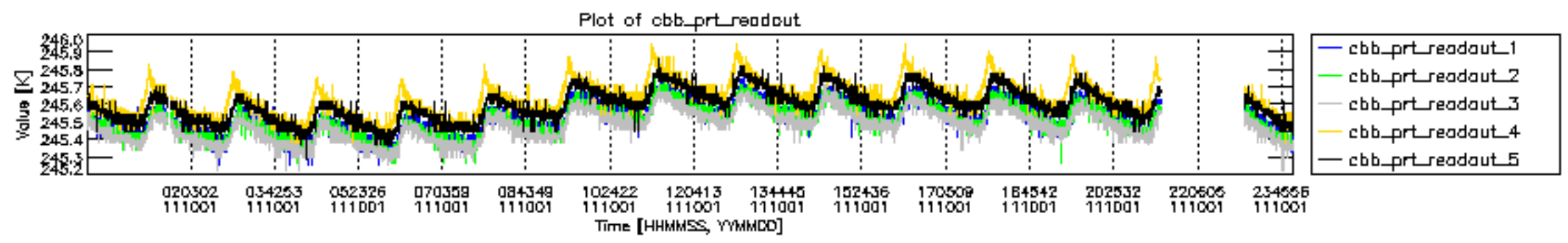


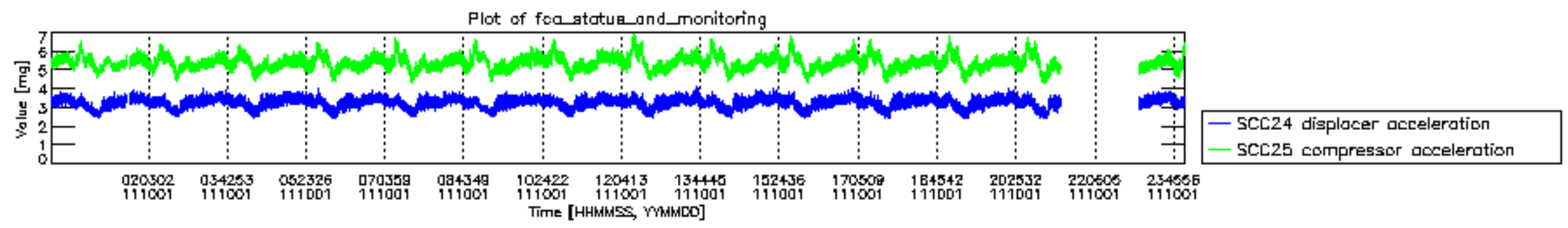












MIPNLOP_MIPSOUPAC_aux_fields_igm_cal, channel statistics plot
 Colour indicates value.

