

0. MIPAS Daily Report for level 0 products

[0.1 General Info](#)

[0.2 Instrument Operational Performance Parameters](#)

[0.3 ADF monitoring](#)

0.1 General Info

This report contains a daily analysis on parameters extracted from MIPAS level 0 data (The MIP_NL__0P product).

0.1.1 Report summary

The table below shows general characteristics of the data that are included into this report.

Item	Value
Report version	v1.6 08-11-2010
Time of report generation	24SEP2011 05:21:34
Data source version	KSPT_L0/4504-N
Processing scope for products	19SEP2011 00:00:00 to 20SEP2011 00:00:00
Start time of first product within scope	19SEP2011 00:18:33
Stop time of last product within scope	20SEP2011 01:22:56
Total number of level 0 products	15
Number of level 0 products with errors	1

0.1.2 Product Quality Indicators per product

The following table shows a summary for each product used in this report.

#	Product name	Start time	Stop time	Prod err	ISP err sign	ISP miss sign	ISP disc sign	rs sign
0	MIP_NL__OPNPDE20110919_001833_000059893106_00375_49958_9668.N1	19SEP2011 00:18:33	19SEP2011 01:58:22	0	0	0	0	0
1	MIP_NL__OPNPDE20110919_015724_000044313106_00376_49959_9669.N1	19SEP2011 01:57:24	19SEP2011 03:11:15	0	0	0	0	0
2	MIP_NL__OPNPDE20110919_031039_000061173106_00377_49960_9670.N1	19SEP2011 03:10:39	19SEP2011 04:52:36	0	0	0	0	0
3	MIP_NL__OPNPDE20110919_045202_000060963106_00378_49961_9671.N1	19SEP2011 04:52:02	19SEP2011 06:33:38	0	0	0	0	0
4	MIP_NL__OPNPDK20110919_063305_000040513106_00379_49962_6353.N1	19SEP2011 06:33:05	19SEP2011 07:40:35	0	0	0	0	0
5	MIP_NL__OPNPDK20110919_074002_000061533106_00380_49963_6354.N1	19SEP2011 07:40:02	19SEP2011 09:22:35	0	0	0	0	0
6	MIP_NL__OPNPDK20110919_092153_000059543106_00381_49964_6355.N1	19SEP2011 09:21:53	19SEP2011 11:01:07	0	0	0	0	0
7	MIP_NL__OPNPDK20110919_110023_000059853106_00382_49965_6356.N1	19SEP2011 11:00:23	19SEP2011 12:40:08	0	0	0	0	0
8	MIP_NL__OPNPDK20110919_123924_000059643106_00383_49966_6357.N1	19SEP2011 12:39:24	19SEP2011 14:18:48	0	0	0	0	0
9	MIP_NL__OPNPDK20110919_141733_000058513106_00384_49967_6358.N1	19SEP2011 14:17:33	19SEP2011 15:55:04	0	0	0	0	0
10	MIP_NL__OPNPDK20110919_155334_000059293106_00385_49968_6359.N1	19SEP2011 15:53:34	19SEP2011 17:32:23	0	0	0	0	0
11	MIP_NL__OPNPDK20110919_173127_000059813106_00386_49969_6360.N1	19SEP2011 17:31:27	19SEP2011 19:11:07	0	0	0	0	0
12	MIP_NL__OPNPDK20110919_191009_000060023106_00387_49970_6361.N1	19SEP2011 19:10:09	19SEP2011 20:50:11	1	1	0	0	0
13	MIP_NL__OPNPDE20110919_220047_000061983106_00388_49971_9673.N1	19SEP2011 22:00:47	19SEP2011 23:44:05	0	0	0	0	0
14	MIP_NL__OPNPDE20110919_234307_000059893106_00389_49972_9674.N1	19SEP2011 23:43:07	20SEP2011 01:22:56	0	0	0	0	0

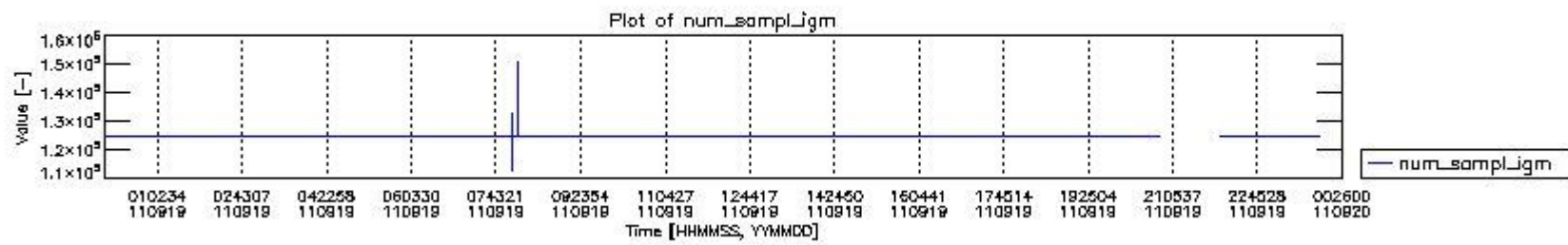
0.2 Instrument Operational Performance Parameters

The following plots give an overview of various instrument parameters for this day. The instrument parameters are part of the auxiliary data field within the source packets of the MIP_NL__0P product. The auxiliary data is normally included twice per interferogram. Note that only the first packet is currently included in monitoring.

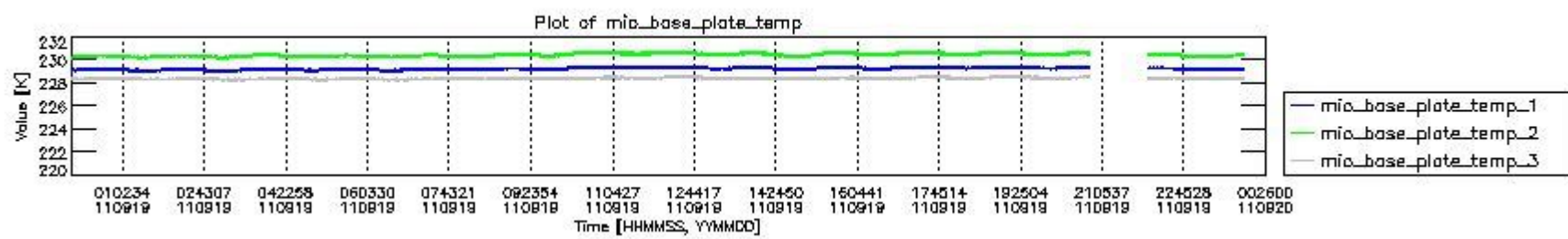
The following table shows the counts of various interferogram number of samples

Number of igm samples	Count [#]	Count [%]
112439	1	0.0025258266
120210	1	0.0025258266
124800	36777	92.892324

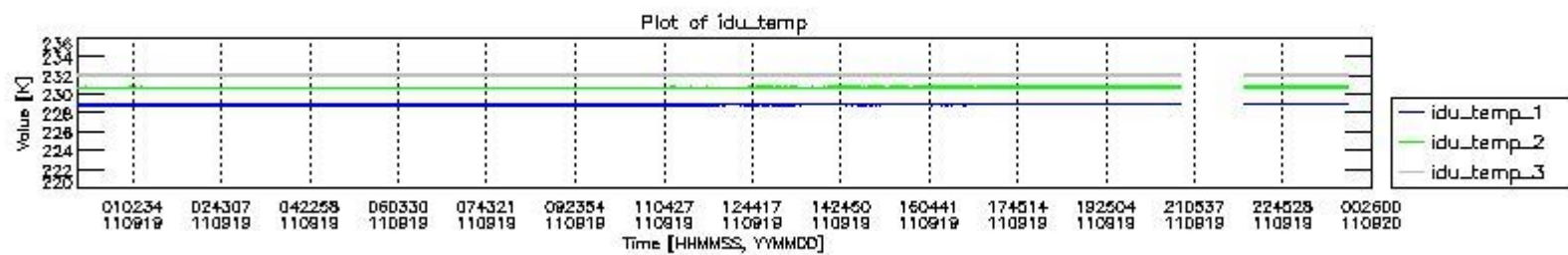
124803	2808	7.0925210
127754	1	0.0025258266
132571	1	0.0025258266
147886	1	0.0025258266
150840	1	0.0025258266



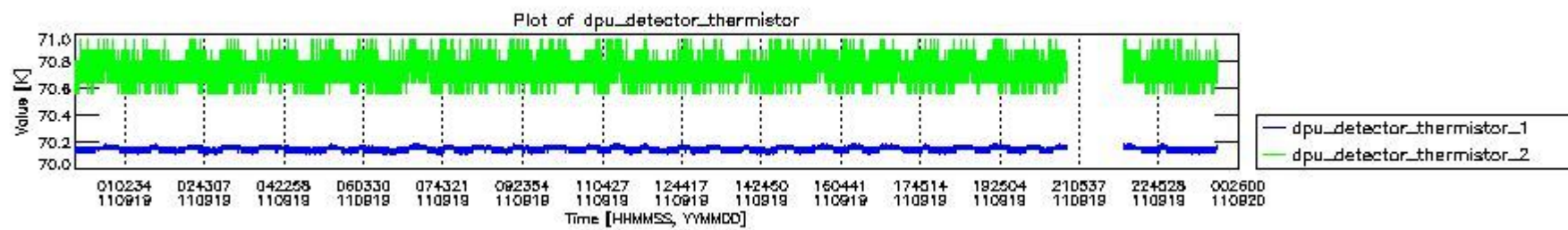
mipas_daily_report_level0_KSPT_L0_4504_N_20110919_0.PNG



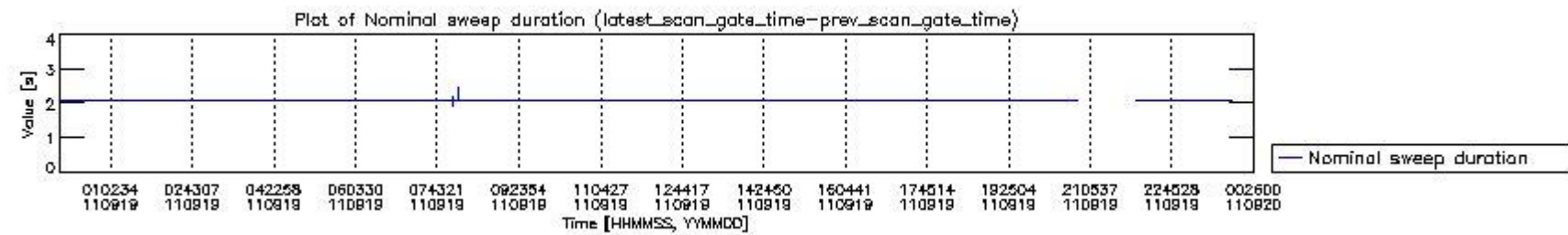
mipas_daily_report_level0_KSPT_L0_4504_N_20110919_1.PNG



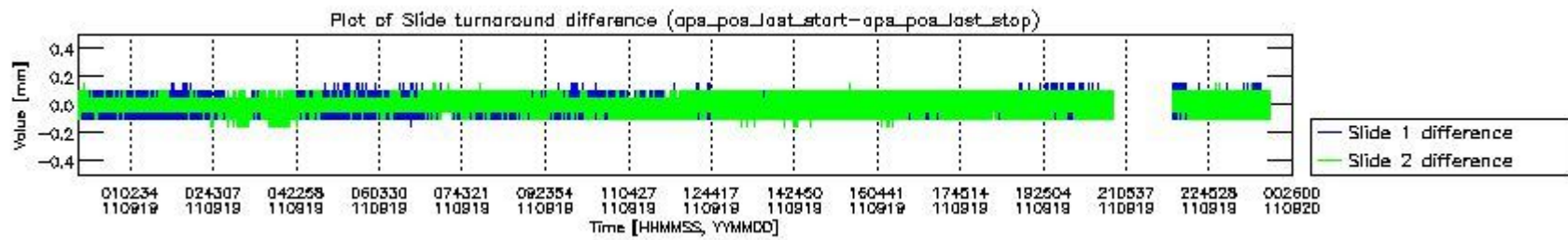
mipas_daily_report_level0_KSPT_L0_4504_N_20110919_2.PNG



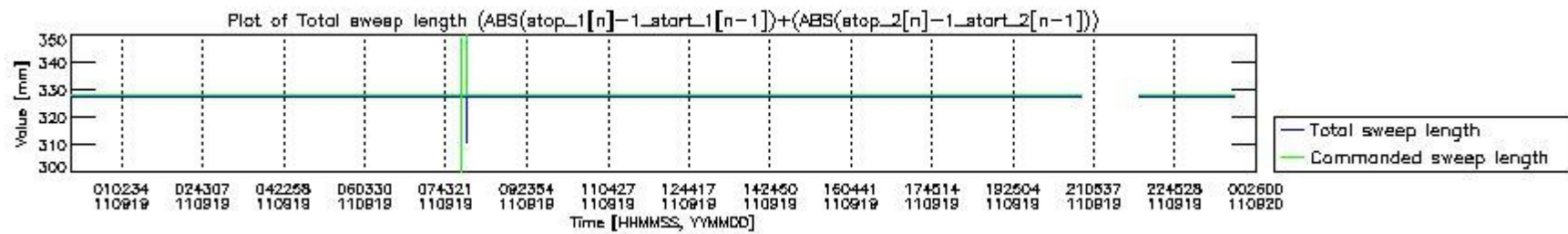
mipas_daily_report_level0_KSPT_L0_4504_N_20110919_3.PNG



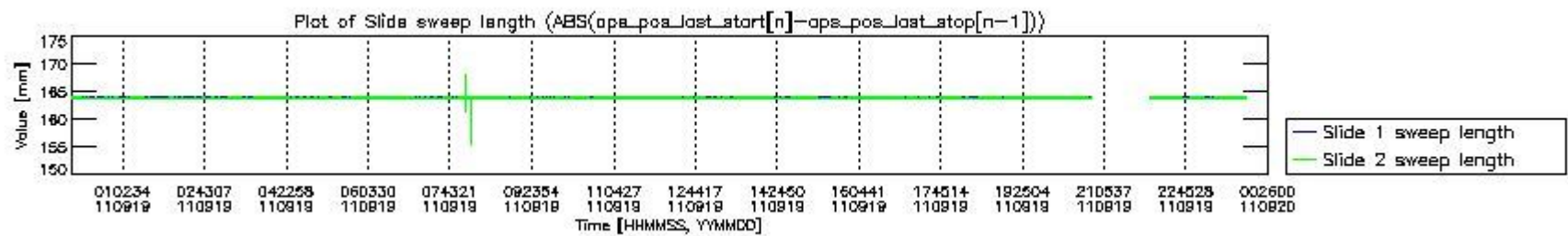
mipas_daily_report_level0_KSPT_L0_4504_N_20110919_4.PNG



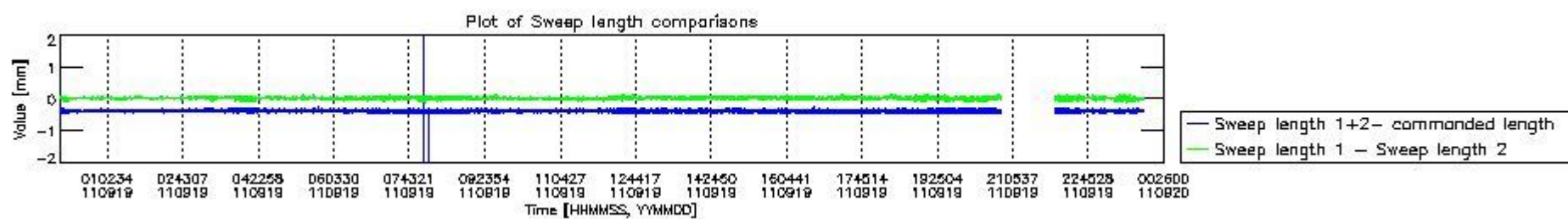
mipas_daily_report_level0_KSPT_L0_4504_N_20110919_5.PNG



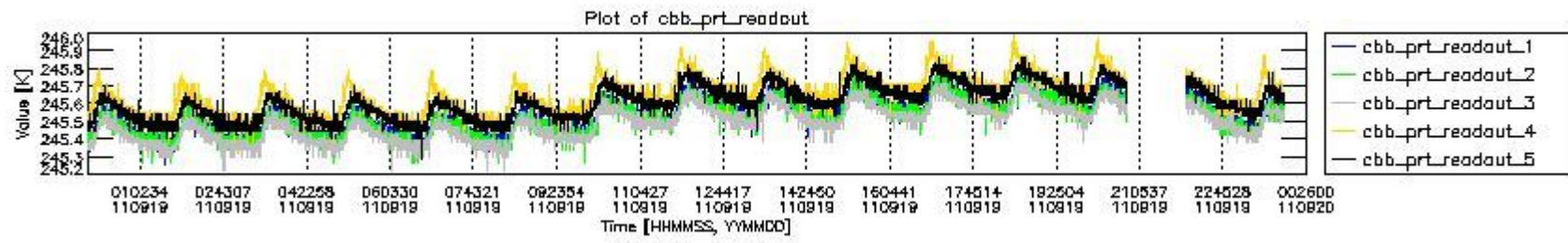
mipas_daily_report_level0_KSPT_L0_4504_N_20110919_6.PNG



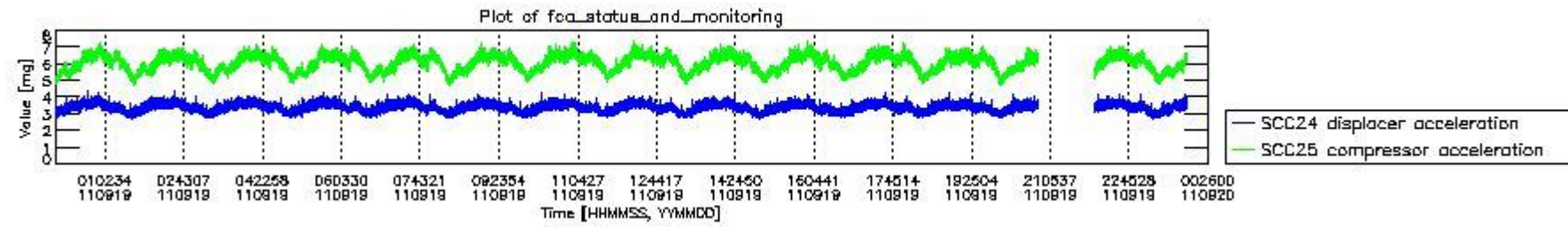
mipas_daily_report_level0_KSPT_L0_4504_N_20110919_7.PNG



mipas_daily_report_level0_KSPT_L0_4504_N_20110919_8.PNG



mipas_daily_report_level0_KSPT_L0_4504_N_20110919_9.PNG

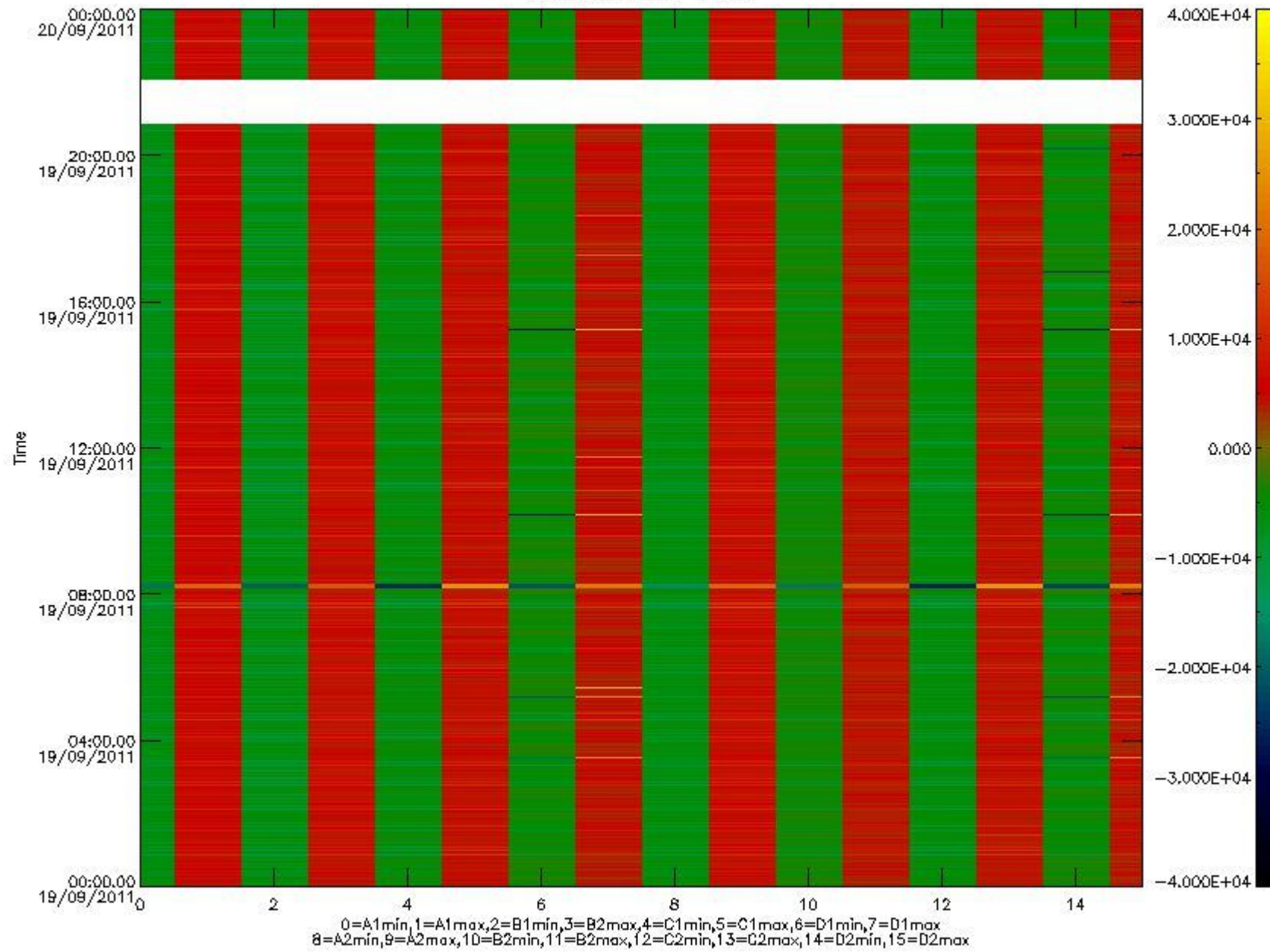


mipas_daily_report_level0_KSPT_L0_4504_N_20110919_10.PNG

The following table shows channel statistics for all channels for this day.

Channel	Min	Max	ADC
A1	-18215	19312	16bit
B1	-20576	17706	16bit
C1	-25511	25399	16bit
D1	-32768	32767	16bit
A2	-15823	19580	16bit
B2	-18592	18287	16bit
C2	-26523	26158	16bit
D2	-32768	32767	16bit

MIPNLOP_MIPSOUPAC_aux_fields_igm_cal, channel statistics plot
Colour indicates value.



mipas_daily_report_level0_KSPT_L0_4504_N_20110919_11.PNG

0.3 ADF monitoring

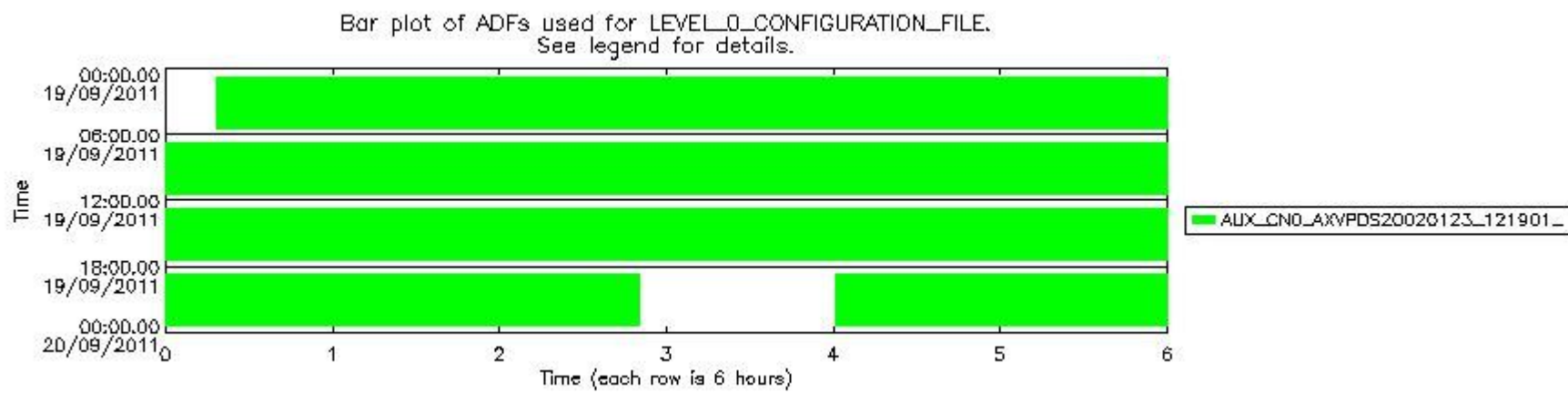
The use of ADFs is shown in two ways:

1. By means of two tables that can be used to find the ADF used for a specific product.
2. By means of plots that show changes in ADF using colours.

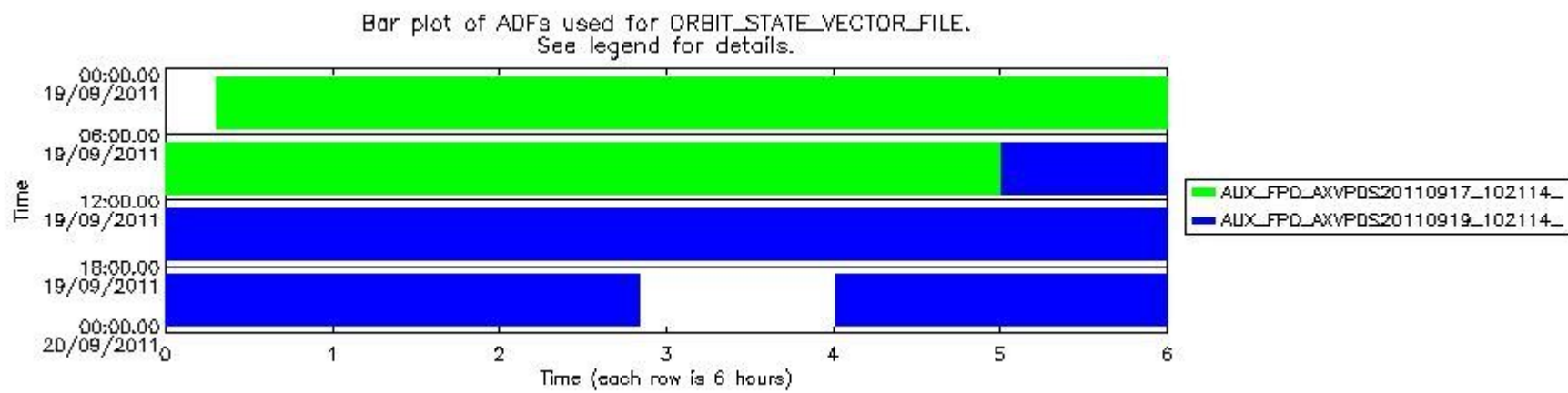
Number	ADF
0	AUX_CN0_AXVPDS20020123_121901_20020101_000000_20200101_000000
1	AUX_FPO_AXVPDS20110917_102114_20110916_190316_20110926_211700
2	AUX_FPO_AXVPDS20110919_102114_20110918_193001_20110928_200332

Number	Product name	#CN0	#FPO
--------	--------------	------	------

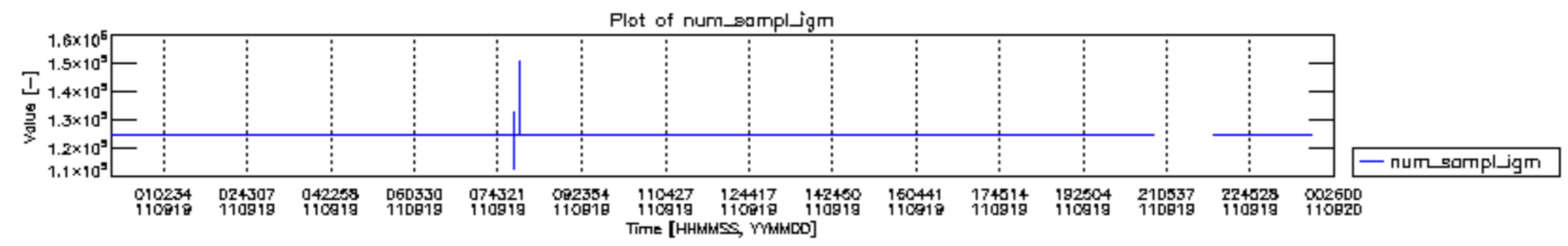
0	MIP_NL__0PNPDE20110919_001833_000059893106_00375_49958_9668.N1	0	1
1	MIP_NL__0PNPDE20110919_015724_000044313106_00376_49959_9669.N1	0	1
2	MIP_NL__0PNPDE20110919_031039_000061173106_00377_49960_9670.N1	0	1
3	MIP_NL__0PNPDE20110919_045202_000060963106_00378_49961_9671.N1	0	1
4	MIP_NL__0PNPDK20110919_063305_000040513106_00379_49962_6353.N1	0	1
5	MIP_NL__0PNPDK20110919_074002_000061533106_00380_49963_6354.N1	0	1
6	MIP_NL__0PNPDK20110919_092153_000059543106_00381_49964_6355.N1	0	1
7	MIP_NL__0PNPDK20110919_110023_000059853106_00382_49965_6356.N1	0	2
8	MIP_NL__0PNPDK20110919_123924_000059643106_00383_49966_6357.N1	0	2
9	MIP_NL__0PNPDK20110919_141733_000058513106_00384_49967_6358.N1	0	2
10	MIP_NL__0PNPDK20110919_155334_000059293106_00385_49968_6359.N1	0	2
11	MIP_NL__0PNPDK20110919_173127_000059813106_00386_49969_6360.N1	0	2
12	MIP_NL__0PNPDK20110919_191009_000060023106_00387_49970_6361.N1	0	2
13	MIP_NL__0PNPDE20110919_220047_000061983106_00388_49971_9673.N1	0	2
14	MIP_NL__0PNPDE20110919_234307_000059893106_00389_49972_9674.N1	0	2

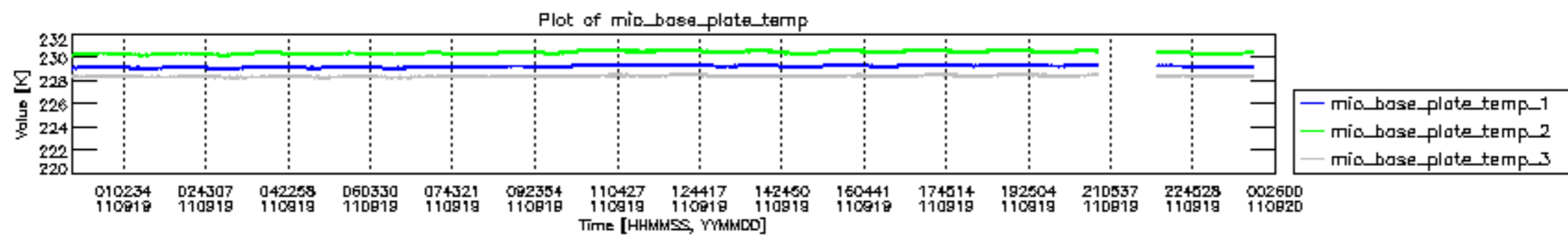


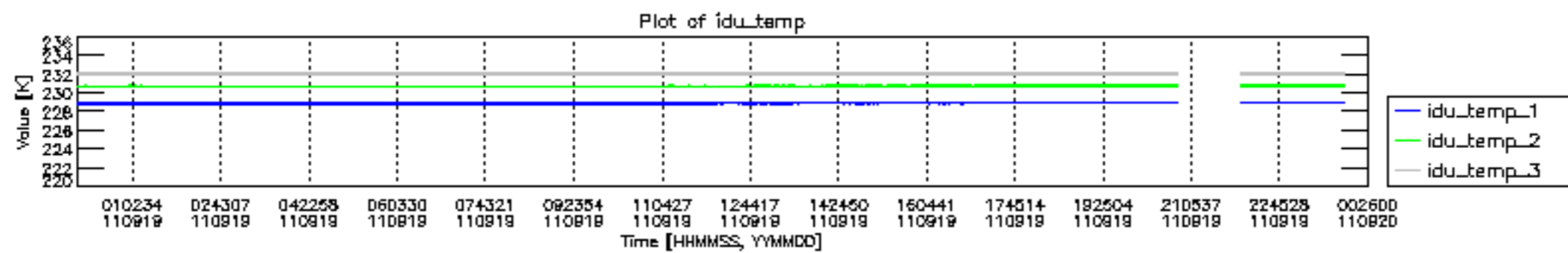
mipas_daily_report_level0_KSPT_L0_4504_N_20110919_12.PNG

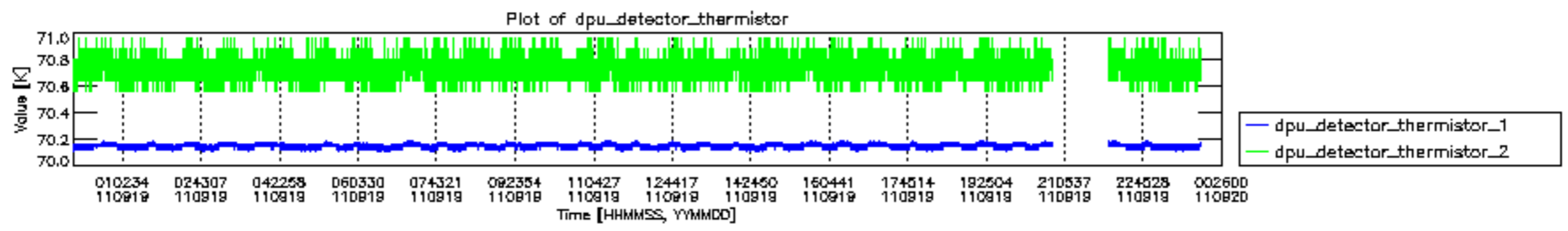


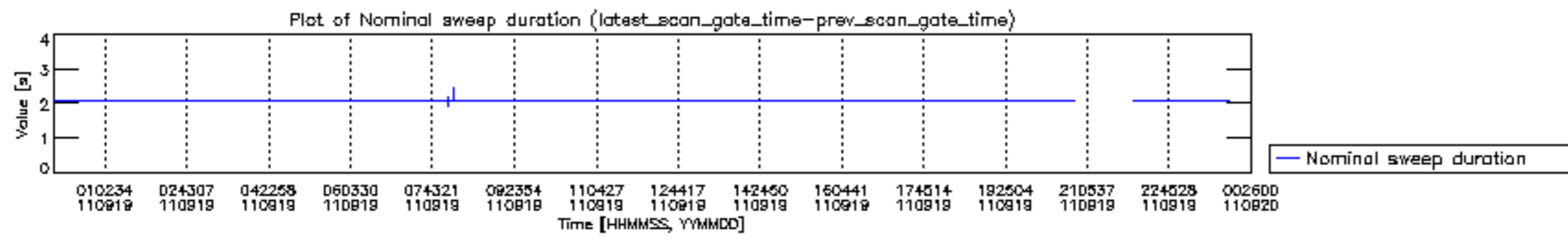
mipas_daily_report_level0_KSPT_L0_4504_N_20110919_13.PNG

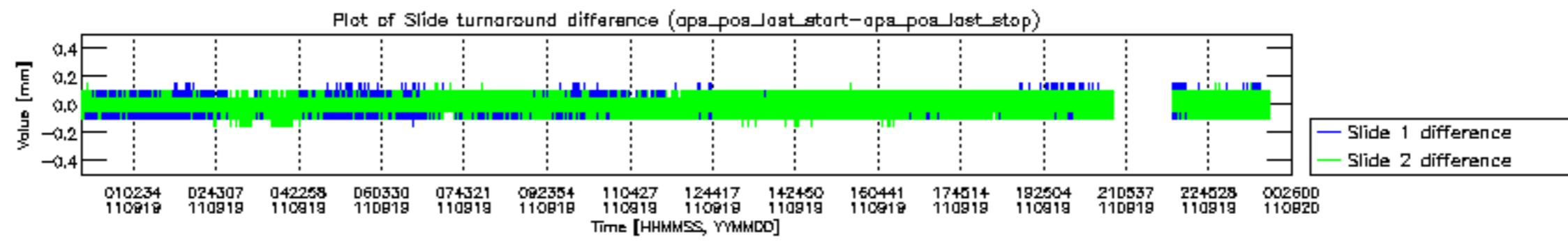


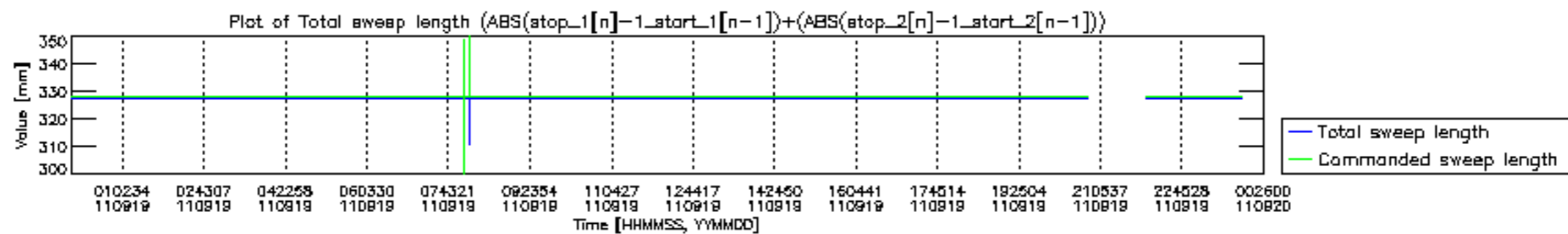


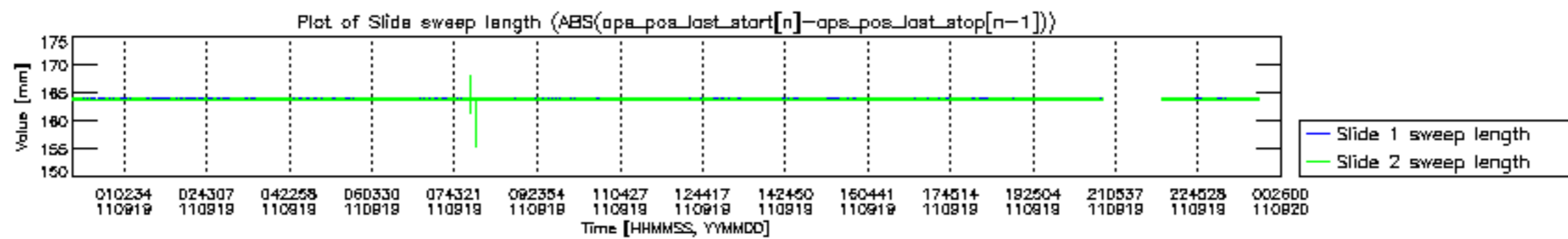


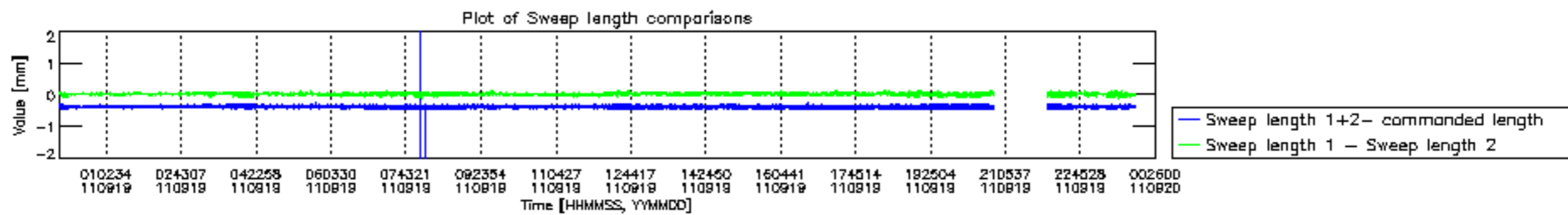


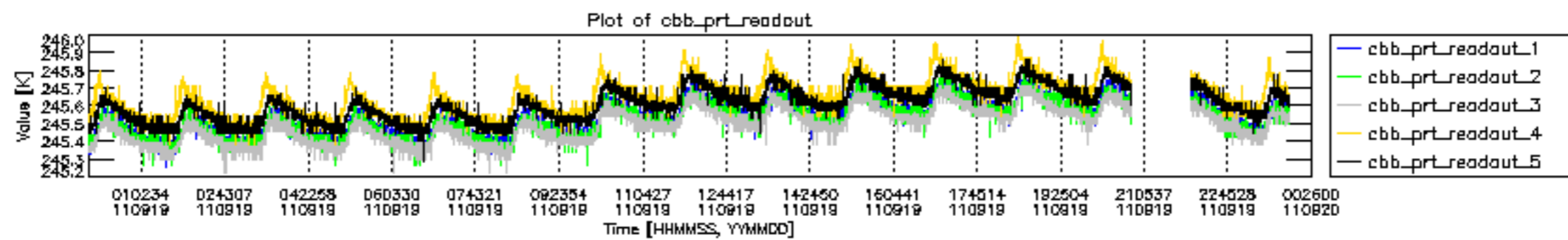


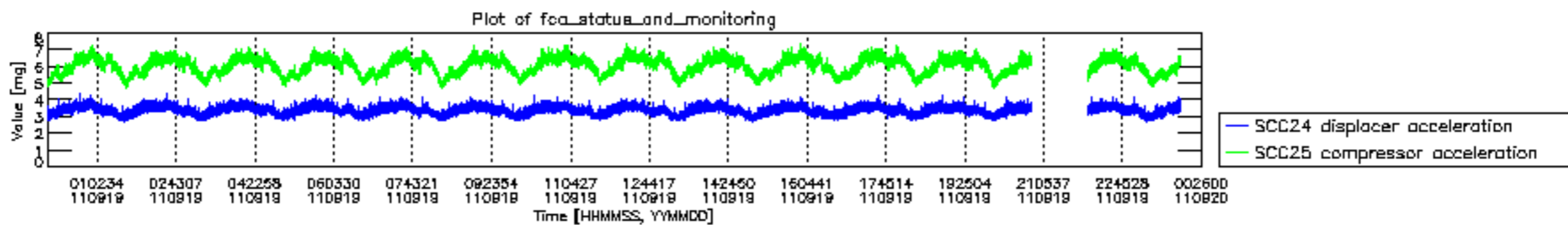




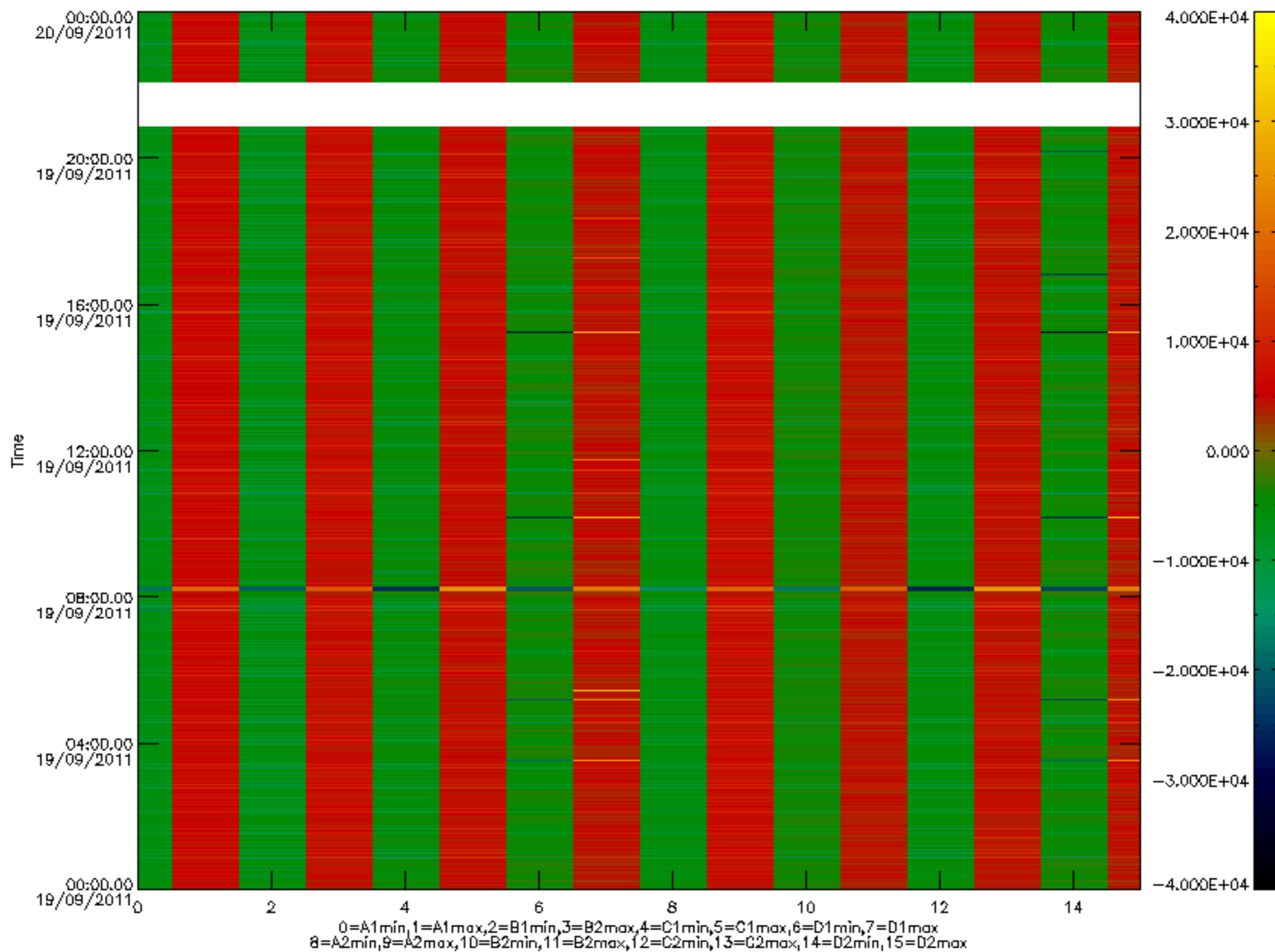


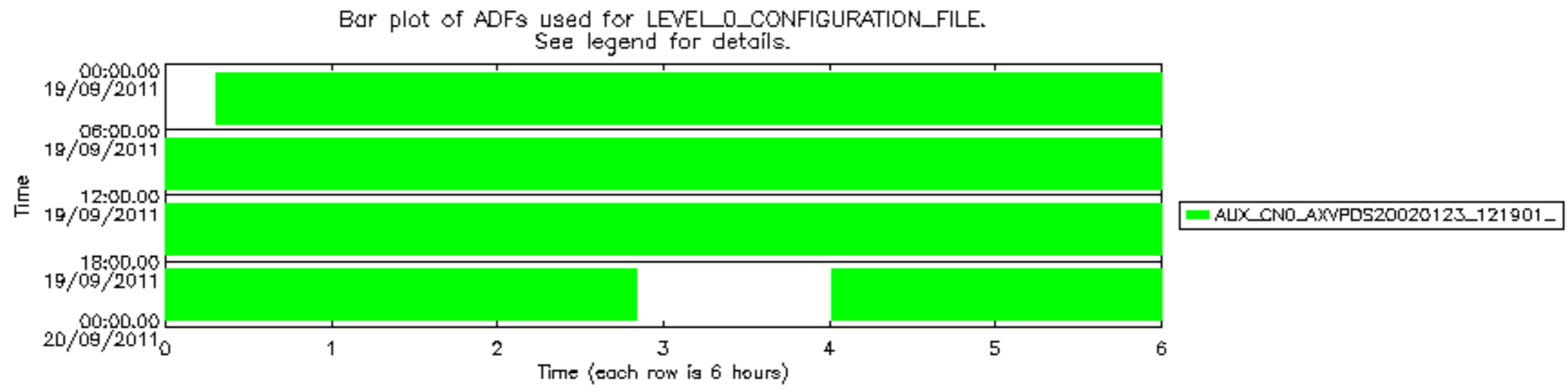






MIPNLOP_MIPSOUPAC_aux_fields_igm_cal, channel statistics plot
 Colour indicates value.





Bar plot of ADFs used for ORBIT_STATE_VECTOR_FILE.
See legend for details.

