

0. MIPAS Daily Report for level 0 products

[0.1 General Info](#)

[0.2 Instrument Operational Performance Parameters](#)

[0.3 ADF monitoring](#)

0.1 General Info

This report contains a daily analysis on parameters extracted from MIPAS level 0 data (The MIP_NL__0P product).

0.1.1 Report summary

The table below shows general characteristics of the data that are included into this report.

Item	Value
Report version	v1.6 08-11-2010
Time of report generation	23SEP2011 05:21:22
Data source version	KSPT_L0/4504-N
Processing scope for products	18SEP2011 00:00:00 to 19SEP2011 00:00:00
Start time of first product within scope	18SEP2011 02:25:24
Stop time of last product within scope	19SEP2011 00:19:31
Total number of level 0 products	14
Number of level 0 products with errors	1

0.1.2 Product Quality Indicators per product

The following table shows a summary for each product used in this report.

#	Product name	Start time	Stop time	Prod err	ISP err sign	ISP miss sign	ISP disc sign	rs sign
0	MIP_NL__OPNPDE20110918_022524_000048723106_00362_49945_9662.N1	18SEP2011 02:25:24	18SEP2011 03:46:36	0	0	0	0	0
1	MIP_NL__OPNPDE20110918_034602_000061863106_00363_49946_9663.N1	18SEP2011 03:46:02	18SEP2011 05:29:08	0	0	0	0	0
2	MIP_NL__OPNPDE20110918_052835_000060803106_00364_49947_9664.N1	18SEP2011 05:28:35	18SEP2011 07:09:54	0	0	0	0	0
3	MIP_NL__OPNPDK20110918_070921_000040363106_00365_49948_6344.N1	18SEP2011 07:09:21	18SEP2011 08:16:37	0	0	0	0	0
4	MIP_NL__OPNPDK20110918_081604_000061253106_00366_49949_6345.N1	18SEP2011 08:16:04	18SEP2011 09:58:09	1	1	0	0	0
5	MIP_NL__OPNPDK20110918_095729_000059583106_00367_49950_6347.N1	18SEP2011 09:57:29	18SEP2011 11:36:47	0	0	0	0	0
6	MIP_NL__OPNPDK20110918_113603_000060253106_00368_49951_6348.N1	18SEP2011 11:36:03	18SEP2011 13:16:28	0	0	0	0	0
7	MIP_NL__OPNPDK20110918_131554_000057323106_00369_49952_6349.N1	18SEP2011 13:15:54	18SEP2011 14:51:27	0	0	0	0	0
8	MIP_NL__OPNPDK20110918_144948_000060373106_00370_49953_6350.N1	18SEP2011 14:49:48	18SEP2011 16:30:26	0	0	0	0	0
9	MIP_NL__OPNPDK20110918_162925_000059223106_00371_49954_6351.N1	18SEP2011 16:29:25	18SEP2011 18:08:08	0	0	0	0	0
10	MIP_NL__OPNPDK20110918_180713_000060583106_00372_49955_6352.N1	18SEP2011 18:07:13	18SEP2011 19:48:12	0	0	0	0	0
11	MIP_NL__OPNPDE20110918_194636_000038773106_00373_49956_9665.N1	18SEP2011 19:46:36	18SEP2011 20:51:13	0	0	0	0	0
12	MIP_NL__OPNPDE20110918_204935_000066623106_00373_49956_9666.N1	18SEP2011 20:49:35	18SEP2011 22:40:37	0	0	0	0	0
13	MIP_NL__OPNPDE20110918_223934_000059983106_00374_49957_9667.N1	18SEP2011 22:39:34	19SEP2011 00:19:31	0	0	0	0	0

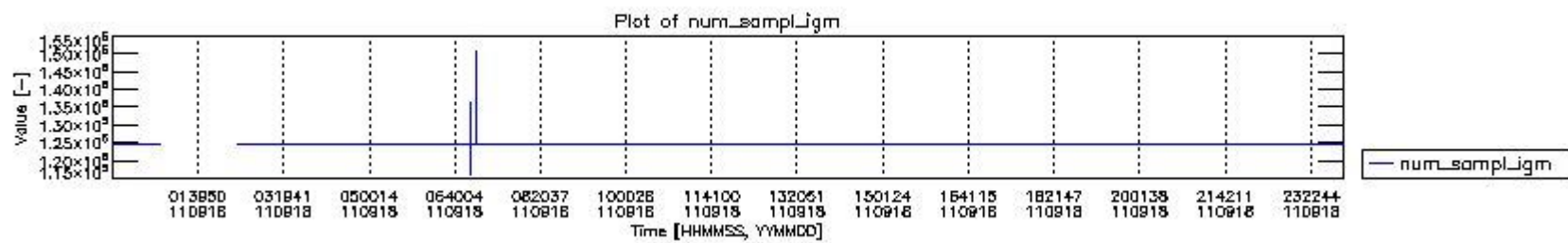
0.2 Instrument Operational Performance Parameters

The following plots give an overview of various instrument parameters for this day. The instrument parameters are part of the auxiliary data field within the source packets of the MIP_NL__0P product. The auxiliary data is normally included twice per interferogram. Note that only the first packet is currently included in monitoring.

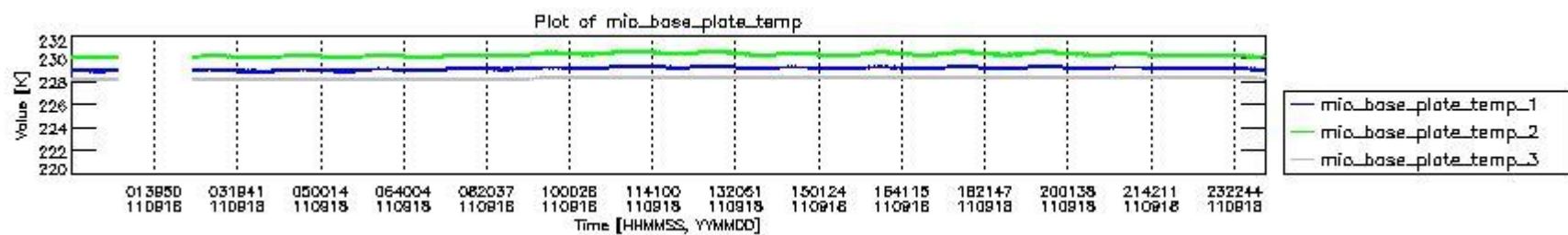
The following table shows the counts of various interferogram number of samples

Number of igm samples	Count [#]	Count [%]
116008	1	0.0025644971
124800	36218	92.880956
124803	2770	7.1036570
127348	1	0.0025644971

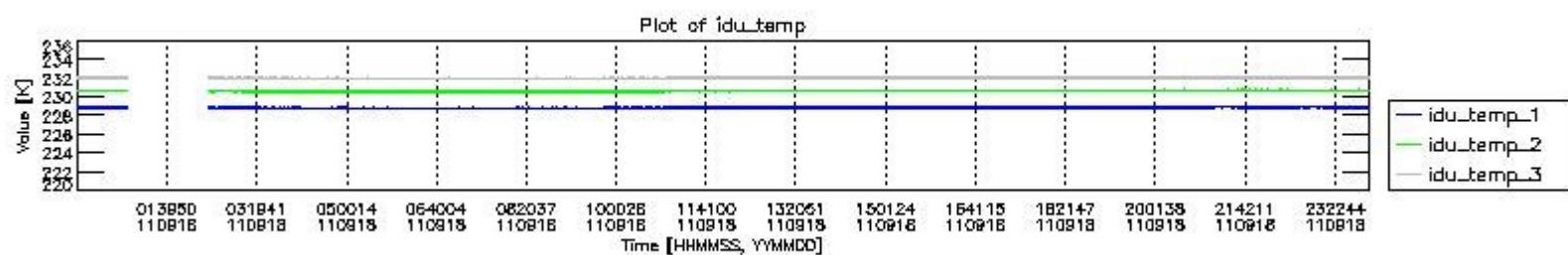
127754	1	0.0025644971
136140	1	0.0025644971
147886	1	0.0025644971
150840	1	0.0025644971



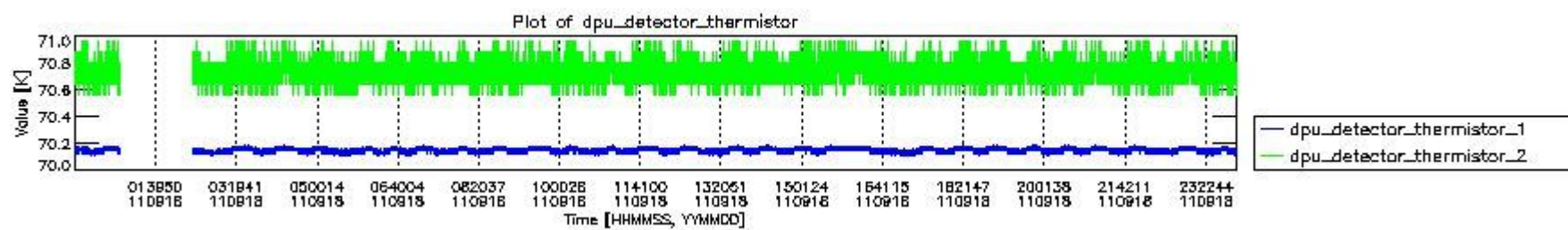
mipas_daily_report_level0_KSPT_L0_4504_N_20110918_0.PNG



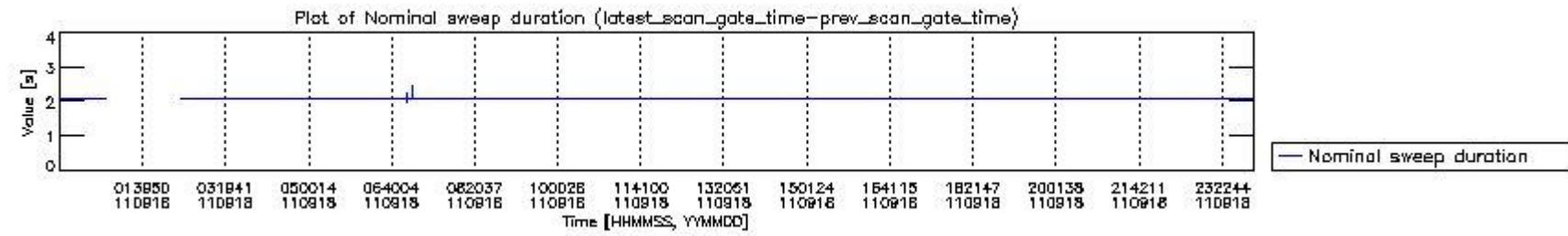
mipas_daily_report_level0_KSPT_L0_4504_N_20110918_1.PNG



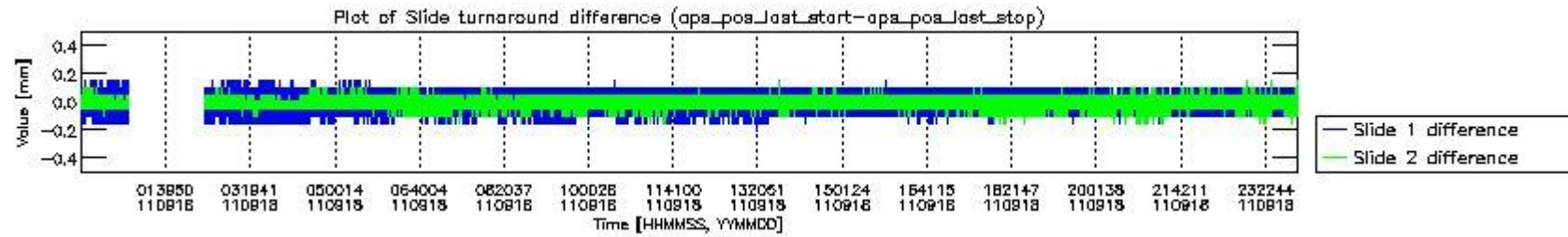
mipas_daily_report_level0_KSPT_L0_4504_N_20110918_2.PNG



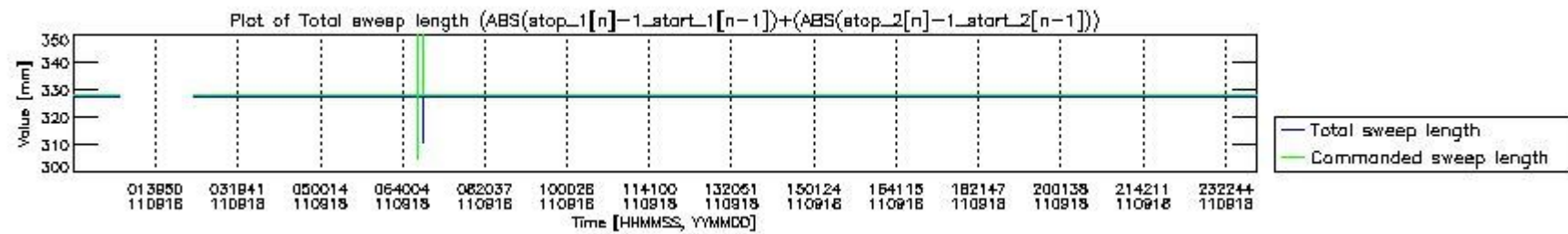
mipas_daily_report_level0_KSPT_L0_4504_N_20110918_3.PNG



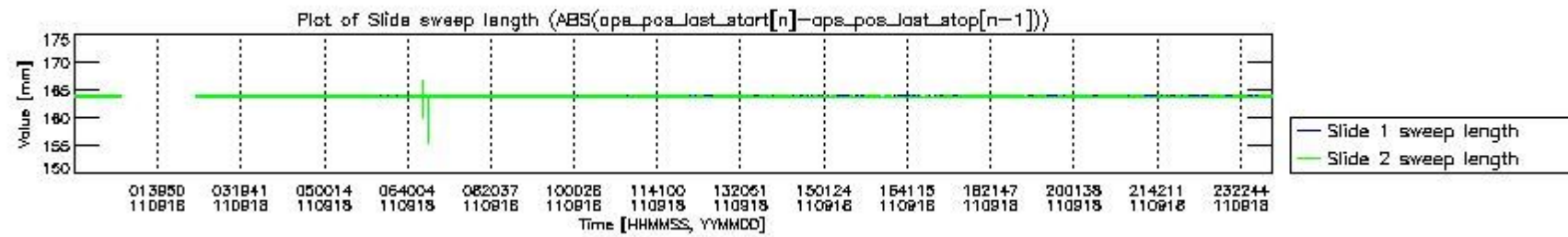
mipas_daily_report_level0_KSPT_L0_4504_N_20110918_4.PNG



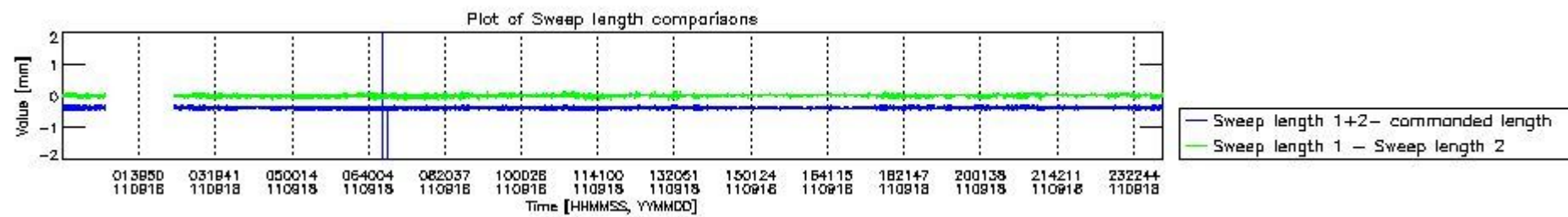
mipas_daily_report_level0_KSPT_L0_4504_N_20110918_5.PNG



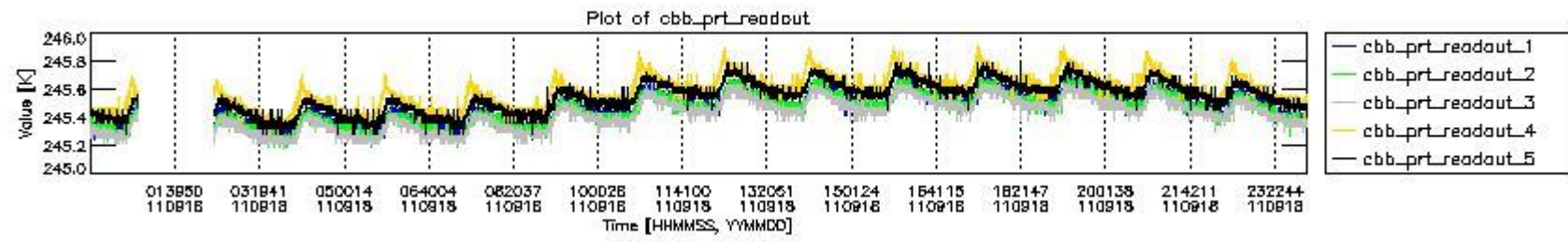
mipas_daily_report_level0_KSPT_L0_4504_N_20110918_6.PNG



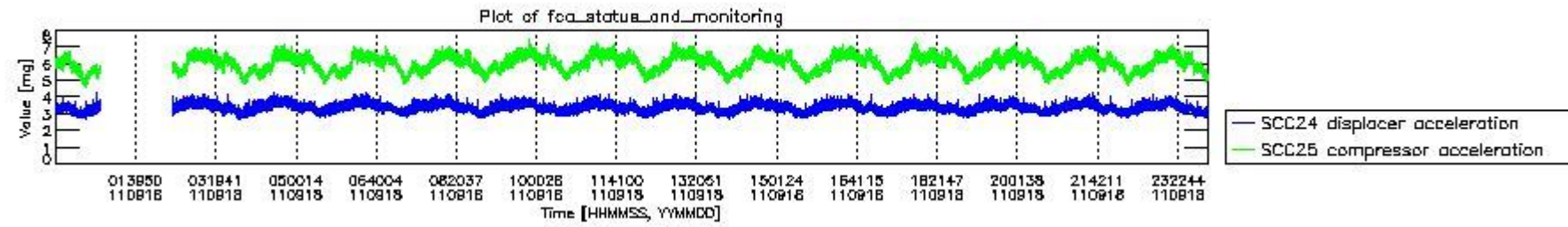
mipas_daily_report_level0_KSPT_L0_4504_N_20110918_7.PNG



mipas_daily_report_level0_KSPT_L0_4504_N_20110918_8.PNG



mipas_daily_report_level0_KSPT_L0_4504_N_20110918_9.PNG

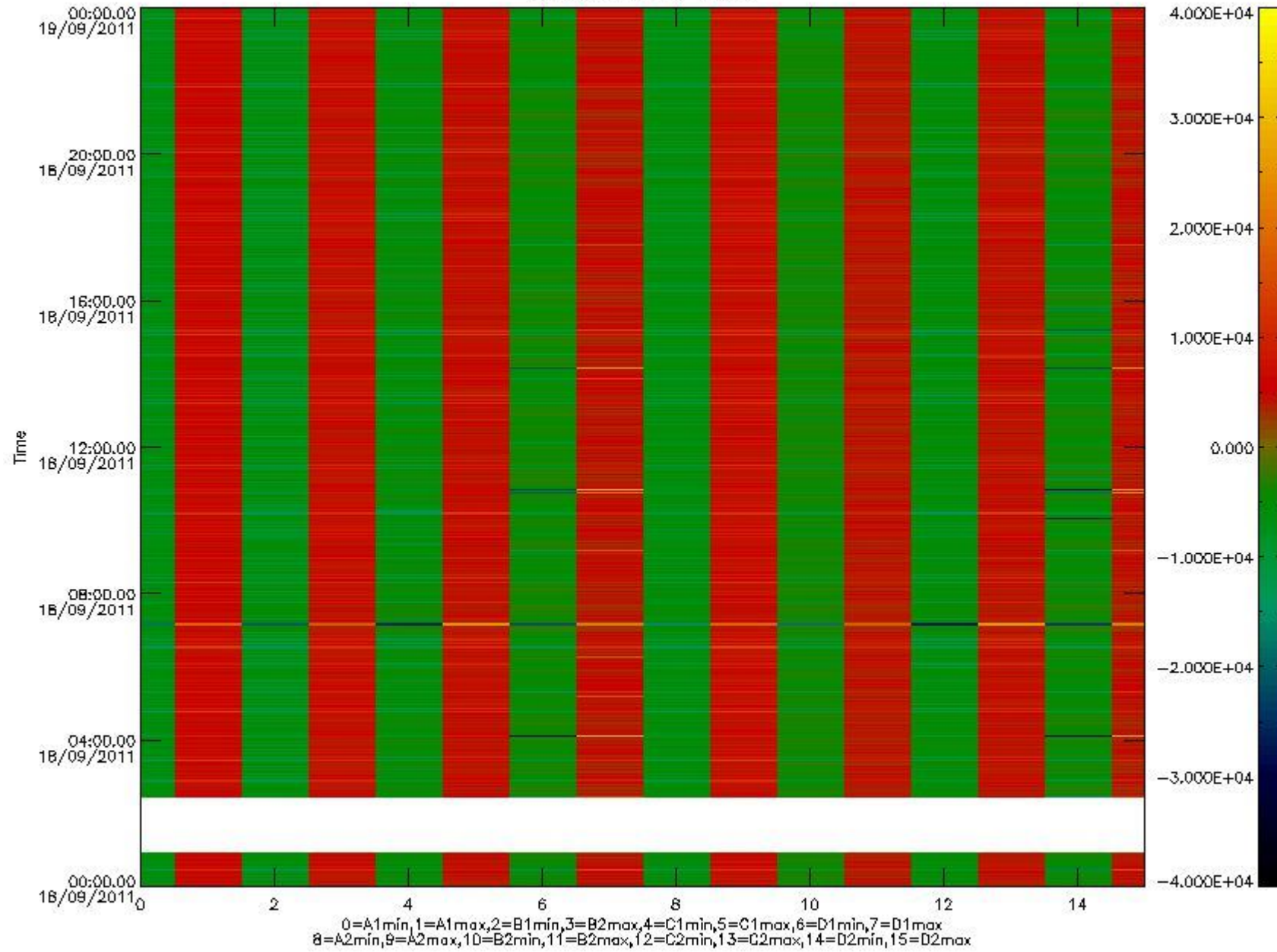


mipas_daily_report_level0_KSPT_L0_4504_N_20110918_10.PNG

The following table shows channel statistics for all channels for this day.

Channel	Min	Max	ADC
A1	-18564	19835	16bit
B1	-20528	17666	16bit
C1	-25429	25330	16bit
D1	-32768	32767	16bit
A2	-15870	19551	16bit
B2	-18554	18236	16bit
C2	-26478	26053	16bit
D2	-32768	32767	16bit

MIPNLOP_MIPSOUPAC_aux_fields_igm_cal, channel statistics plot
Colour indicates value.



mipas_daily_report_level0_KSPT_L0_4504_N_20110918_11.PNG

0.3 ADF monitoring

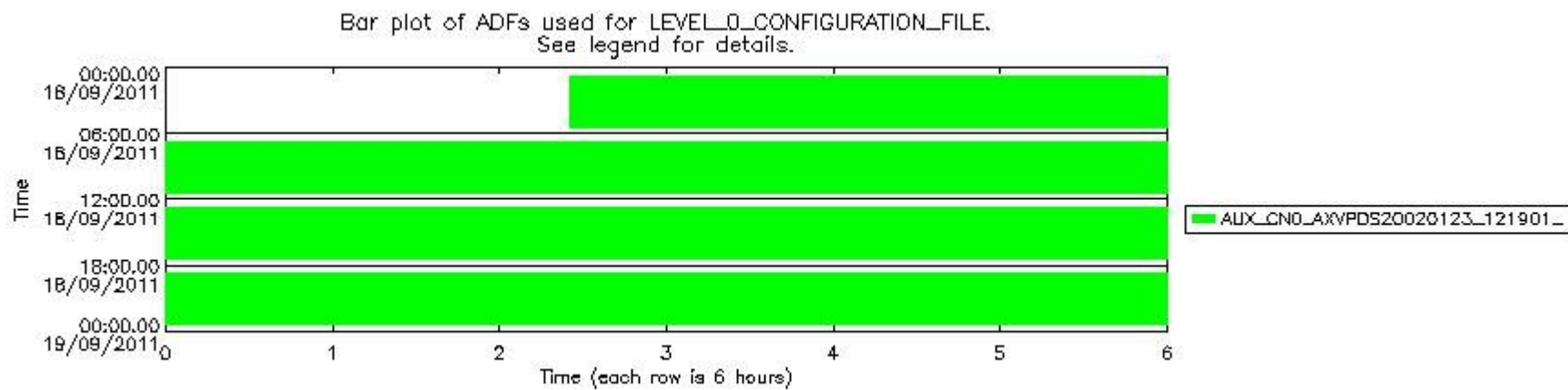
The use of ADFs is shown in two ways:

1. By means of two tables that can be used to find the ADF used for a specific product.
2. By means of plots that show changes in ADF using colours.

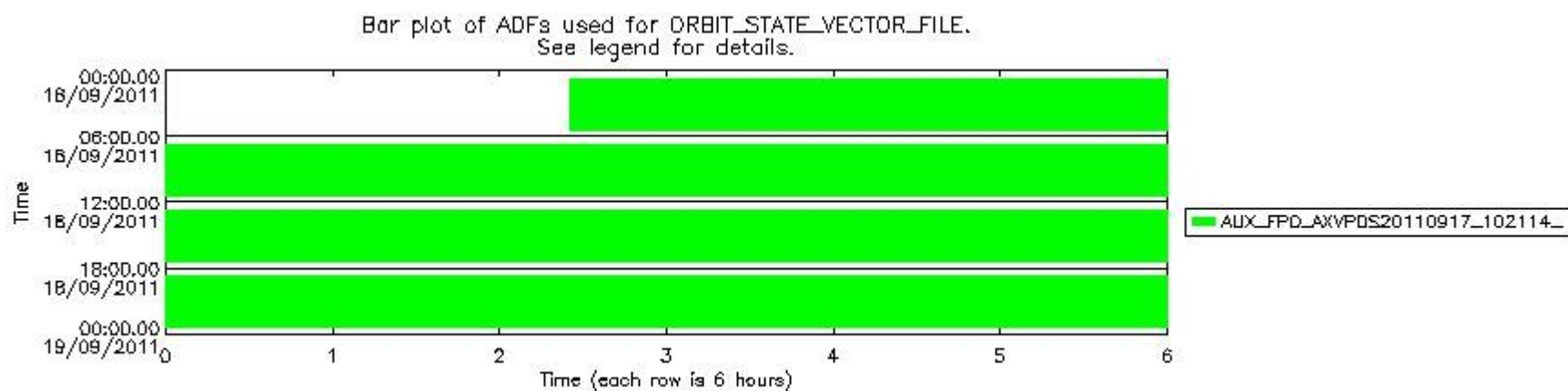
Number	ADF
0	AUX_CN0_AXVPDS20020123_121901_20020101_000000_20200101_000000
1	AUX_FPO_AXVPDS20110917_102114_20110916_190316_20110926_211700

Number	Product name	#CN0	#FPO
0	MIP_NL_0PNPDE20110918_022524_000048723106_00362_49945_9662.N1	0	1

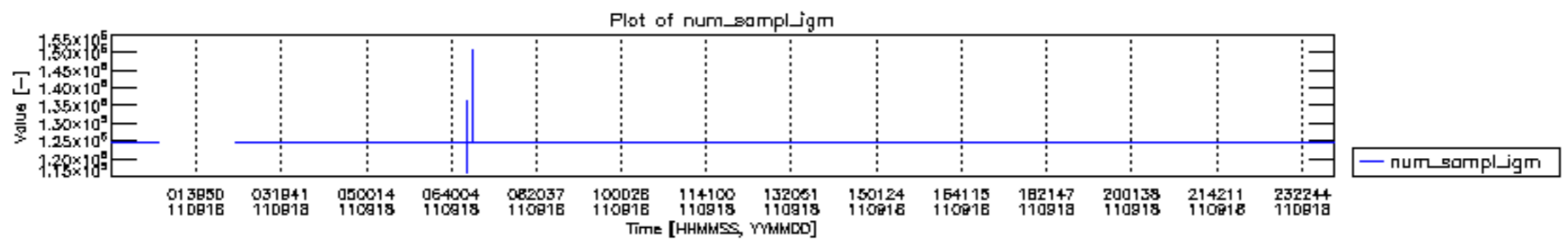
1	MIP_NL__0PNPDE20110918_034602_000061863106_00363_49946_9663.N1	0	1
2	MIP_NL__0PNPDE20110918_052835_000060803106_00364_49947_9664.N1	0	1
3	MIP_NL__0PNPDK20110918_070921_000040363106_00365_49948_6344.N1	0	1
4	MIP_NL__0PNPDK20110918_081604_000061253106_00366_49949_6345.N1	0	1
5	MIP_NL__0PNPDK20110918_095729_000059583106_00367_49950_6347.N1	0	1
6	MIP_NL__0PNPDK20110918_113603_000060253106_00368_49951_6348.N1	0	1
7	MIP_NL__0PNPDK20110918_131554_000057323106_00369_49952_6349.N1	0	1
8	MIP_NL__0PNPDK20110918_144948_000060373106_00370_49953_6350.N1	0	1
9	MIP_NL__0PNPDK20110918_162925_000059223106_00371_49954_6351.N1	0	1
10	MIP_NL__0PNPDK20110918_180713_000060583106_00372_49955_6352.N1	0	1
11	MIP_NL__0PNPDE20110918_194636_000038773106_00373_49956_9665.N1	0	1
12	MIP_NL__0PNPDE20110918_204935_000066623106_00373_49956_9666.N1	0	1
13	MIP_NL__0PNPDE20110918_223934_000059983106_00374_49957_9667.N1	0	1

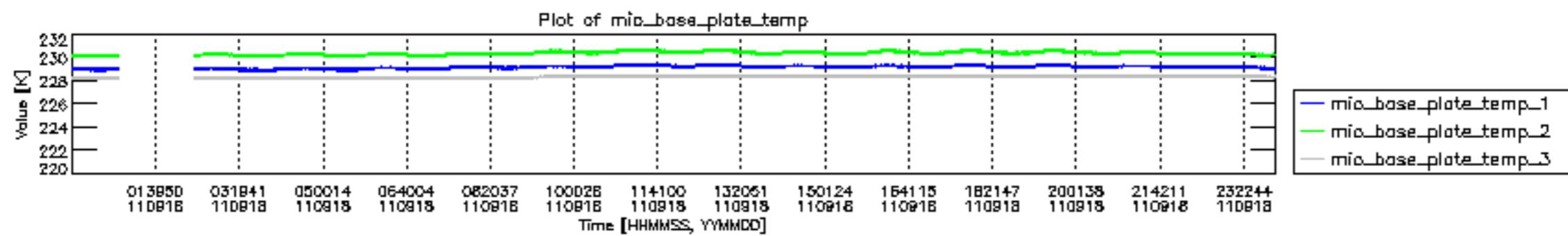


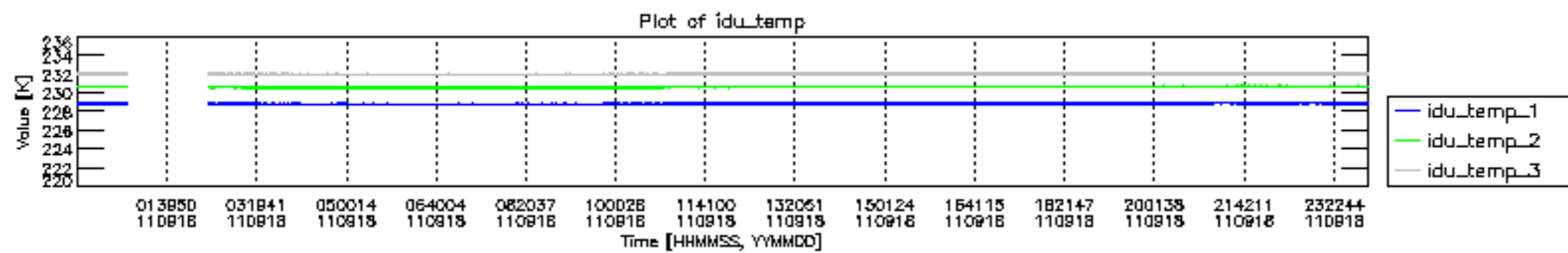
mipas_daily_report_level0_KSPT_L0_4504_N_20110918_12.PNG

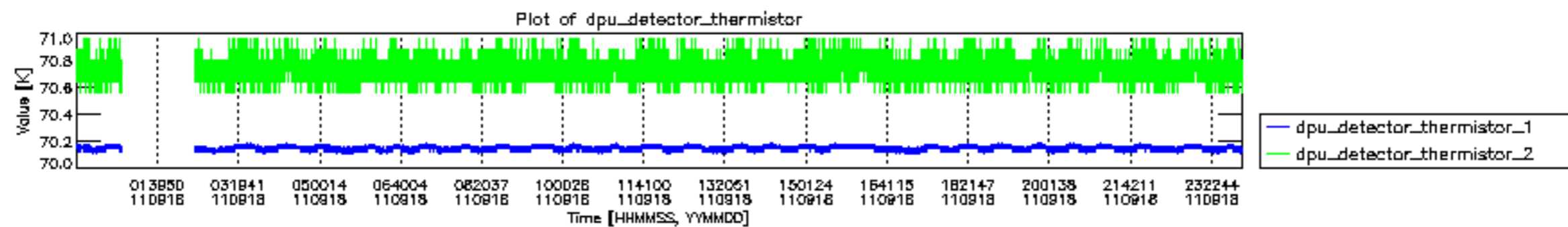


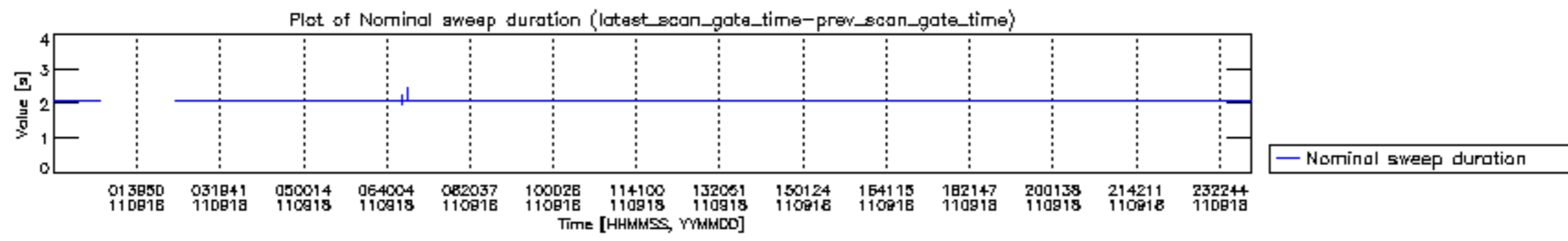
mipas_daily_report_level0_KSPT_L0_4504_N_20110918_13.PNG

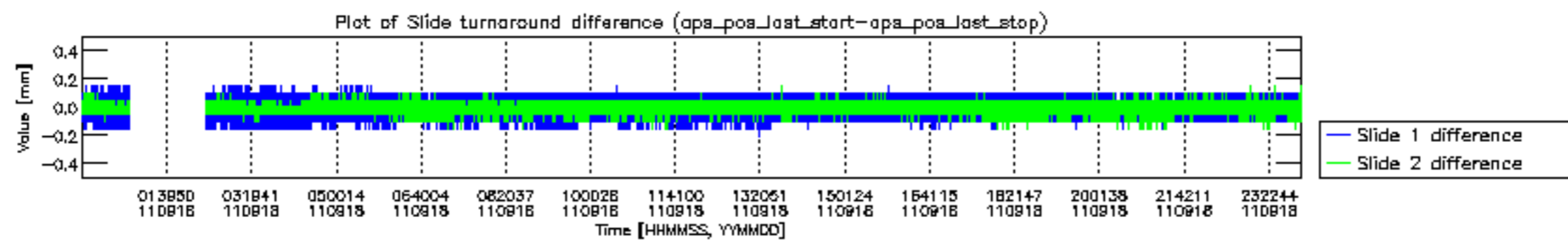


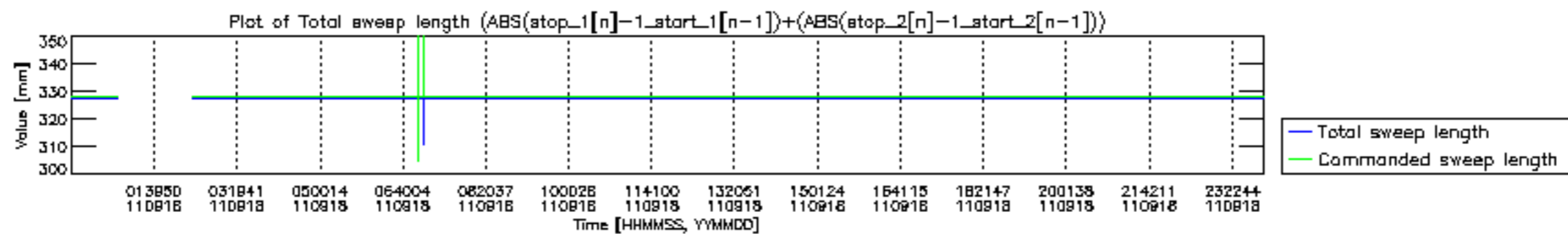


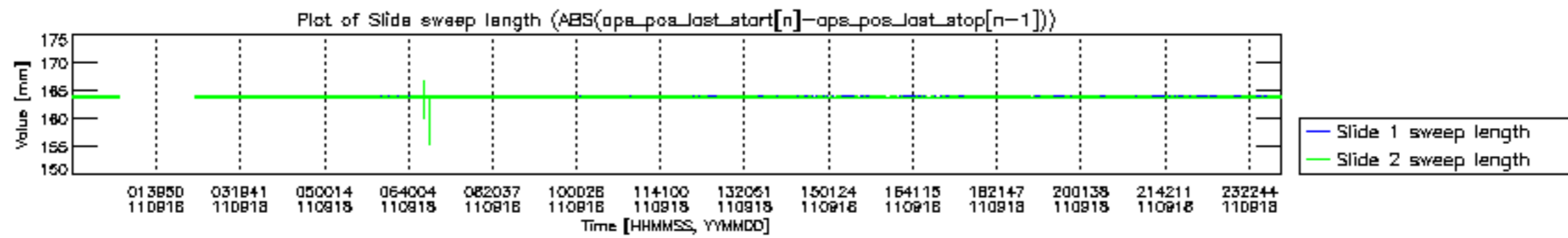


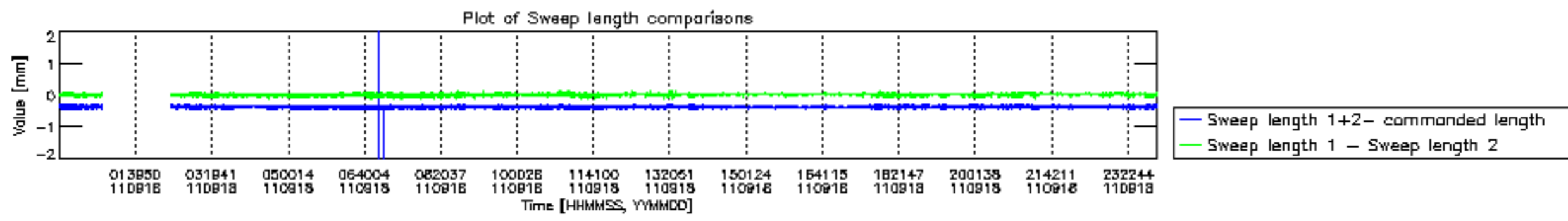


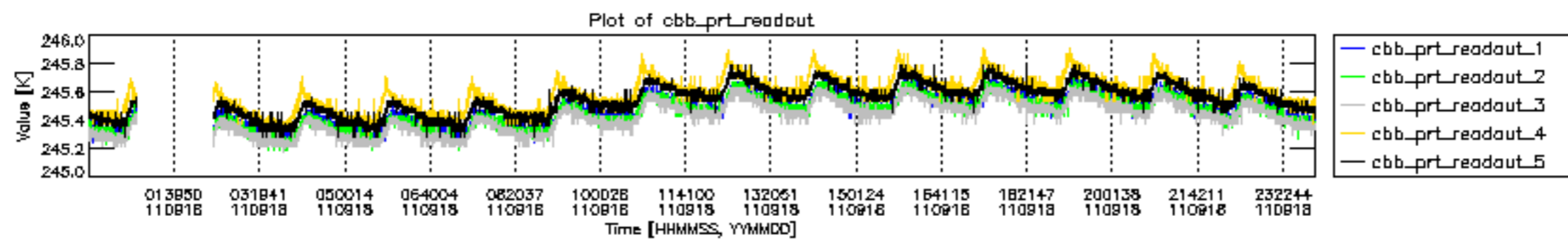


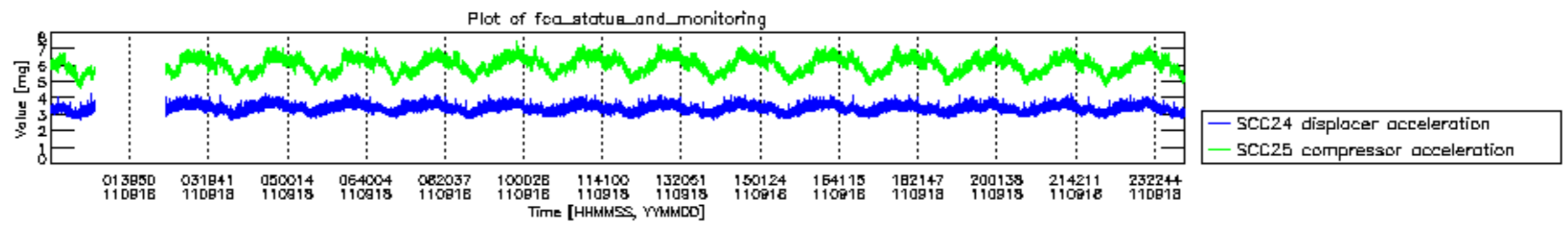












MIPNLOP_MIPSOUPAC_aux_fields_igm_cal, channel statistics plot
 Colour indicates value.

