

0. MIPAS Daily Report for level 0 products

[0.1 General Info](#)

[0.2 Instrument Operational Performance Parameters](#)

[0.3 ADF monitoring](#)

0.1 General Info

This report contains a daily analysis on parameters extracted from MIPAS level 0 data (The MIP_NL__0P product).

0.1.1 Report summary

The table below shows general characteristics of the data that are included into this report.

Item	Value
Report version	v1.6 08-11-2010
Time of report generation	11SEP2011 05:21:33
Data source version	KSPT_L0/4504-N
Processing scope for products	06SEP2011 00:00:00 to 07SEP2011 00:00:00
Start time of first product within scope	06SEP2011 01:34:24
Stop time of last product within scope	07SEP2011 00:59:54
Total number of level 0 products	16
Number of level 0 products with errors	0

0.1.2 Product Quality Indicators per product

The following table shows a summary for each product used in this report.

#	Product name	Start time	Stop time	Prod err	ISP err sign	ISP miss sign	ISP disc sign	rs sign
0	MIP_NL__0PNPDE20110906_013424_000043913106_00189_49772_9591.N1	06SEP2011 01:34:24	06SEP2011 02:47:35	0	0	0	0	0
1	MIP_NL__0PNPDE20110906_024702_000061023106_00190_49773_9592.N1	06SEP2011 02:47:02	06SEP2011 04:28:44	0	0	0	0	0
2	MIP_NL__0PNPDE20110906_042808_000060663106_00191_49774_9593.N1	06SEP2011 04:28:08	06SEP2011 06:09:15	0	0	0	0	0
3	MIP_NL__0PNPDK20110906_060841_000041593106_00192_49775_6246.N1	06SEP2011 06:08:41	06SEP2011 07:18:00	0	0	0	0	0
4	MIP_NL__0PNPDK20110906_071727_000060733106_00193_49776_6247.N1	06SEP2011 07:17:27	06SEP2011 08:58:40	0	0	0	0	0
5	MIP_NL__0PNPDK20110906_085807_000059793106_00194_49777_6248.N1	06SEP2011 08:58:07	06SEP2011 10:37:46	0	0	0	0	0
6	MIP_NL__0PNPDK20110906_103700_000059373106_00195_49778_6249.N1	06SEP2011 10:37:00	06SEP2011 12:15:57	0	0	0	0	0
7	MIP_NL__0PNPDK20110906_121513_000060253106_00196_49779_6250.N1	06SEP2011 12:15:13	06SEP2011 13:55:37	0	0	0	0	0
8	MIP_NL__0PNPDK20110906_135504_000057803106_00197_49780_6251.N1	06SEP2011 13:55:04	06SEP2011 15:31:24	0	0	0	0	0
9	MIP_NL__0PNPDK20110906_152944_000059873106_00198_49781_6252.N1	06SEP2011 15:29:44	06SEP2011 17:09:31	0	0	0	0	0
10	MIP_NL__0PNPDK20110906_170833_000059873106_00199_49782_6253.N1	06SEP2011 17:08:33	06SEP2011 18:48:20	0	0	0	0	0
11	MIP_NL__0PNPDK20110906_184719_000014373106_00200_49783_6254.N1	06SEP2011 18:47:19	06SEP2011 19:11:17	0	0	0	0	0
12	MIP_NL__0PNPDK20110906_191117_000045603106_00200_49783_6255.N1	06SEP2011 19:11:17	06SEP2011 20:27:17	0	0	0	0	0
13	MIP_NL__0PNPDE20110906_202541_000043123106_00201_49784_9594.N1	06SEP2011 20:25:41	06SEP2011 21:37:33	0	0	0	0	0
14	MIP_NL__0PNPDE20110906_213634_000061673106_00201_49784_9595.N1	06SEP2011 21:36:34	06SEP2011 23:19:21	0	0	0	0	0
15	MIP_NL__0PNPDE20110906_231822_000060923106_00202_49785_9596.N1	06SEP2011 23:18:22	07SEP2011 00:59:54	0	0	0	0	0

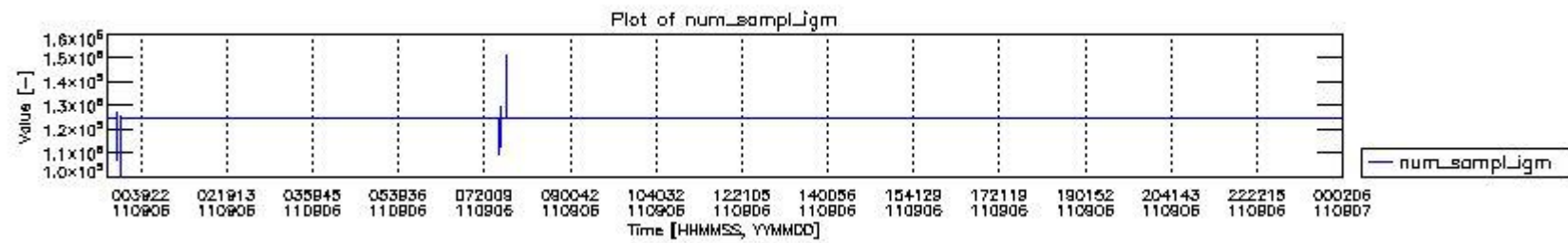
0.2 Instrument Operational Performance Parameters

The following plots give an overview of various instrument parameters for this day. The instrument parameters are part of the auxiliary data field within the source packets of the MIP_NL__0P product. The auxiliary data is normally included twice per interferogram. Note that only the first packet is currently included in monitoring.

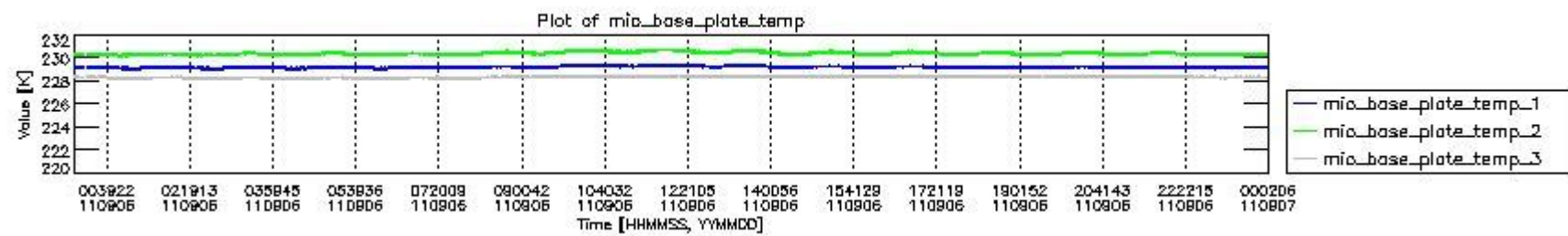
The following table shows the counts of various interferogram number of samples

Number of igm samples	Count [#]	Count [%]
100037	1	0.0024137681
107384	1	0.0024137681

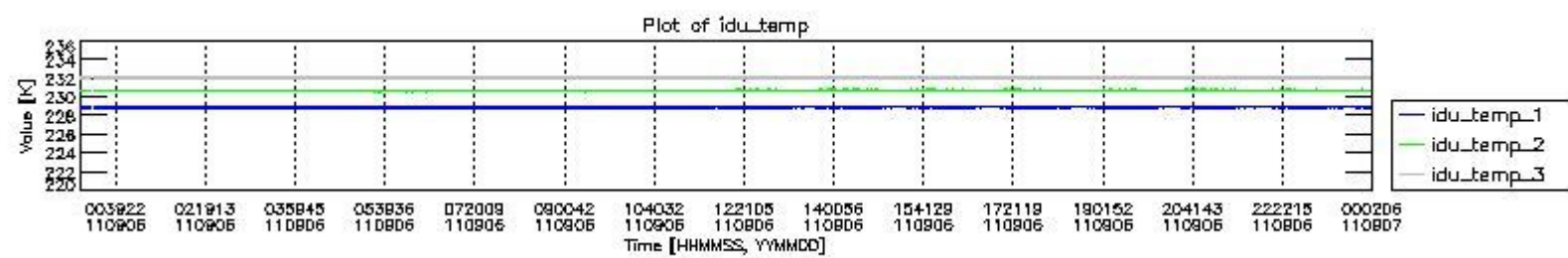
109837	1	0.0024137681
110100	1	0.0024137681
115006	1	0.0024137681
124800	38650	93.292138
124803	2767	6.6788964
125289	1	0.0024137681
125778	1	0.0024137681
127516	1	0.0024137681
127902	1	0.0024137681
129969	1	0.0024137681
148034	1	0.0024137681
151136	1	0.0024137681



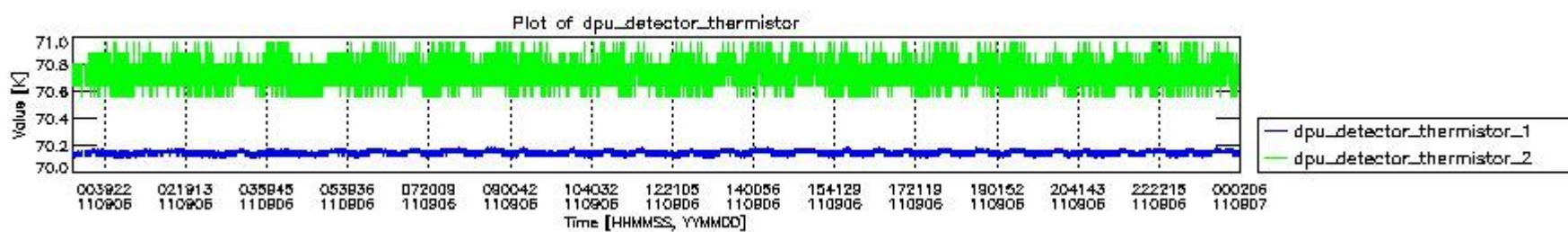
mipas_daily_report_level0_KSPT_L0_4504_N_20110906_0.PNG



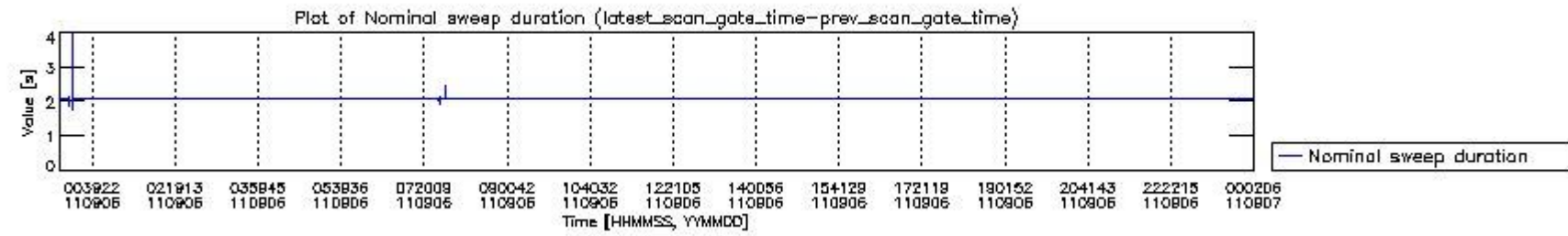
mipas_daily_report_level0_KSPT_L0_4504_N_20110906_1.PNG



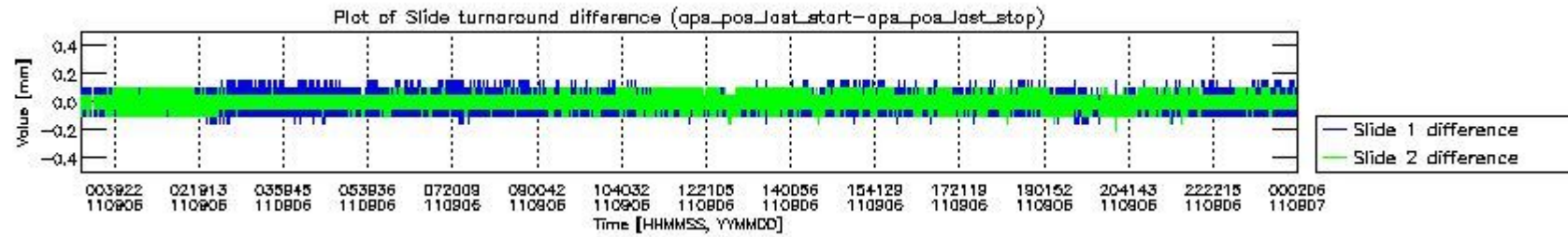
mipas_daily_report_level0_KSPT_L0_4504_N_20110906_2.PNG



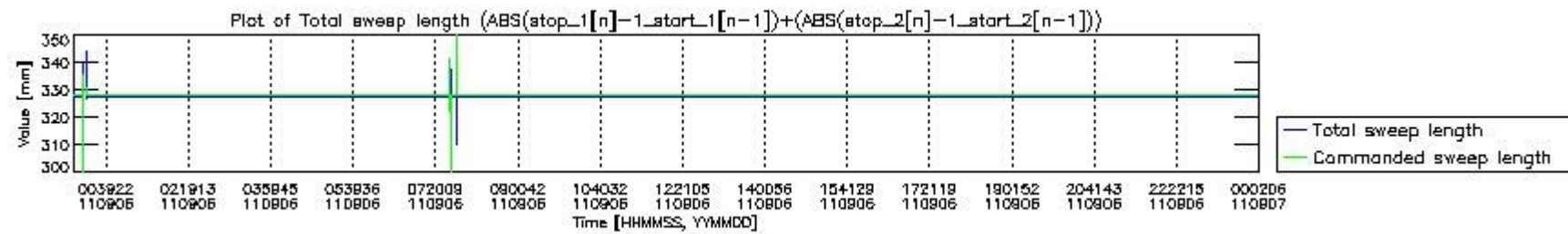
mipas_daily_report_level0_KSPT_L0_4504_N_20110906_3.PNG



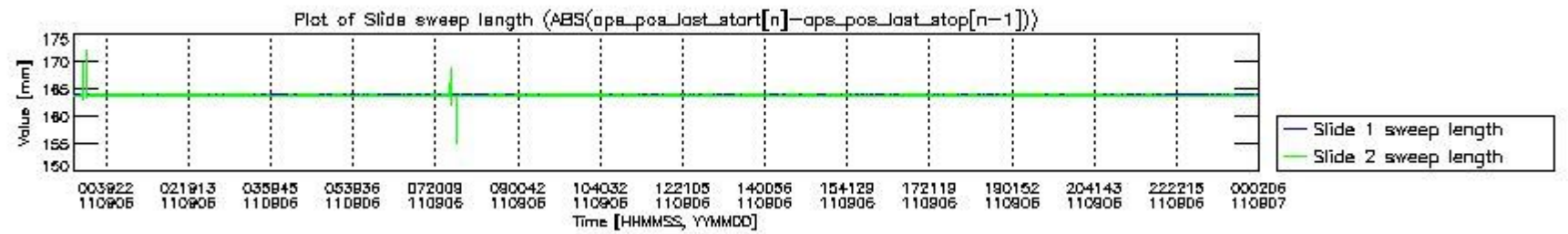
mipas_daily_report_level0_KSPT_L0_4504_N_20110906_4.PNG



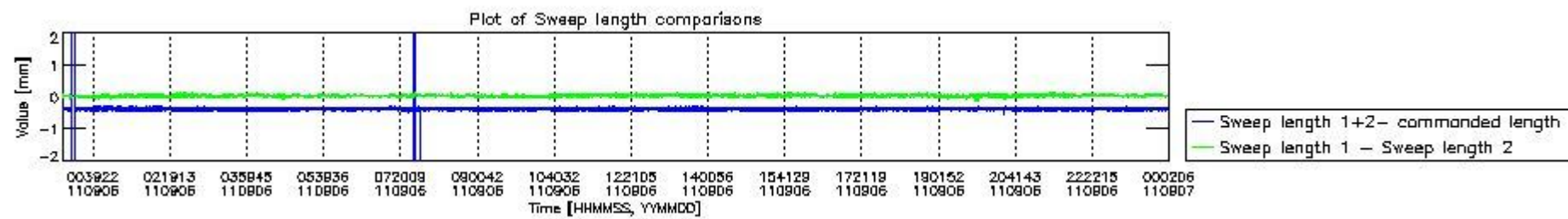
mipas_daily_report_level0_KSPT_L0_4504_N_20110906_5.PNG



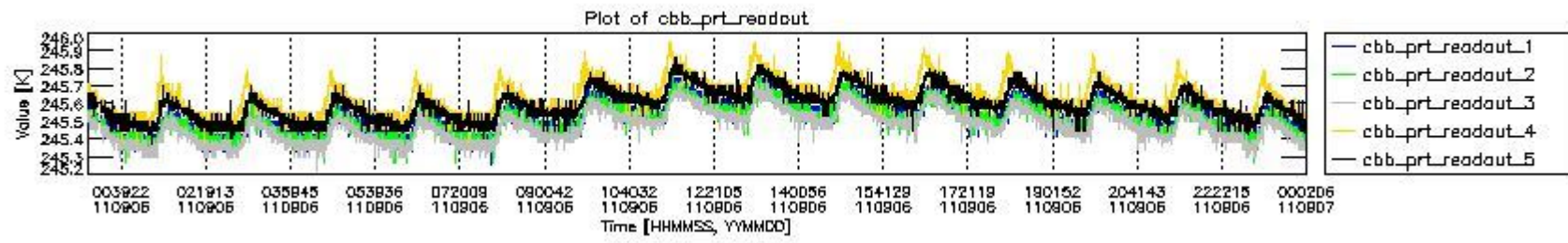
mipas_daily_report_level0_KSPT_L0_4504_N_20110906_6.PNG



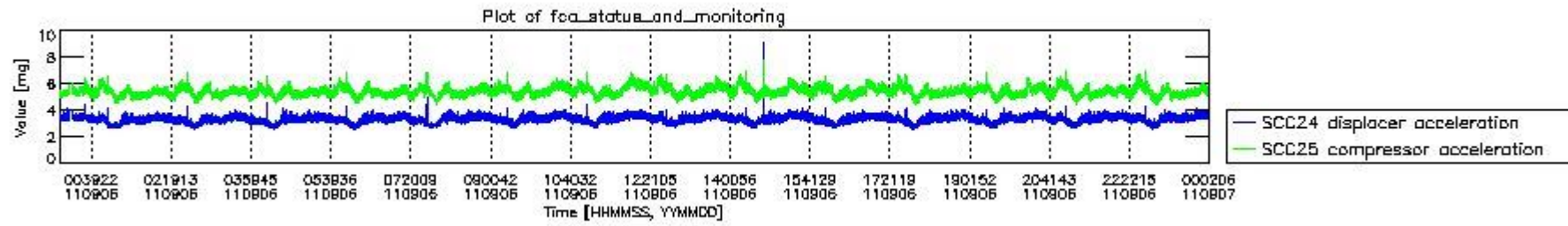
mipas_daily_report_level0_KSPT_L0_4504_N_20110906_7.PNG



mipas_daily_report_level0_KSPT_L0_4504_N_20110906_8.PNG



mipas_daily_report_level0_KSPT_L0_4504_N_20110906_9.PNG

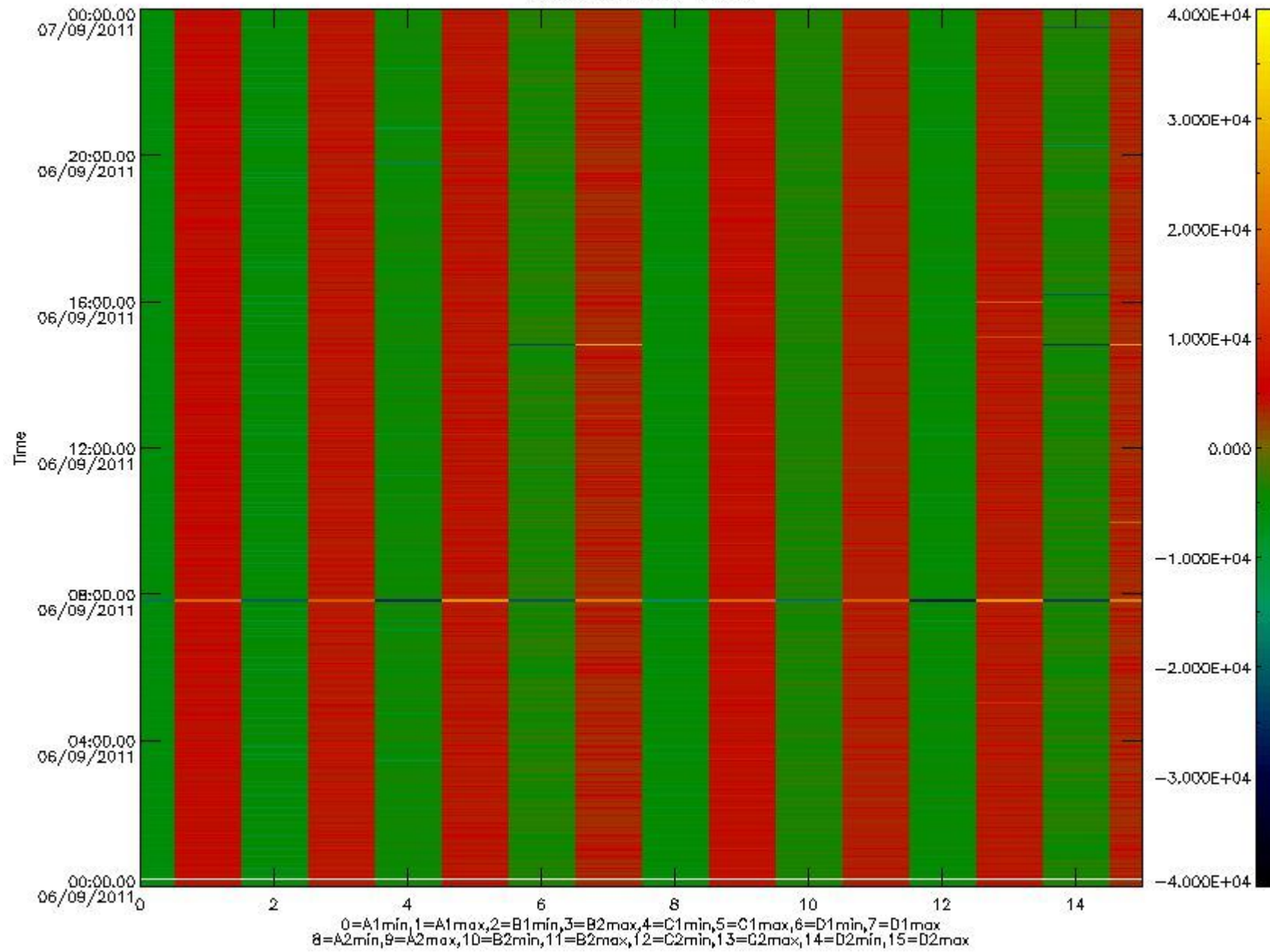


mipas_daily_report_level0_KSPT_L0_4504_N_20110906_10.PNG

The following table shows channel statistics for all channels for this day.

Channel	Min	Max	ADC
A1	-18061	19114	16bit
B1	-20423	17620	16bit
C1	-25483	25327	16bit
D1	-32768	32767	16bit
A2	-15694	19350	16bit
B2	-18668	18346	16bit
C2	-26511	26086	16bit
D2	-32768	32767	16bit

MIPNLOP_MIPSOUPAC_aux_fields_igm_cal, channel statistics plot
Colour indicates value.



mipas_daily_report_level0_KSPT_L0_4504_N_20110906_11.PNG

0.3 ADF monitoring

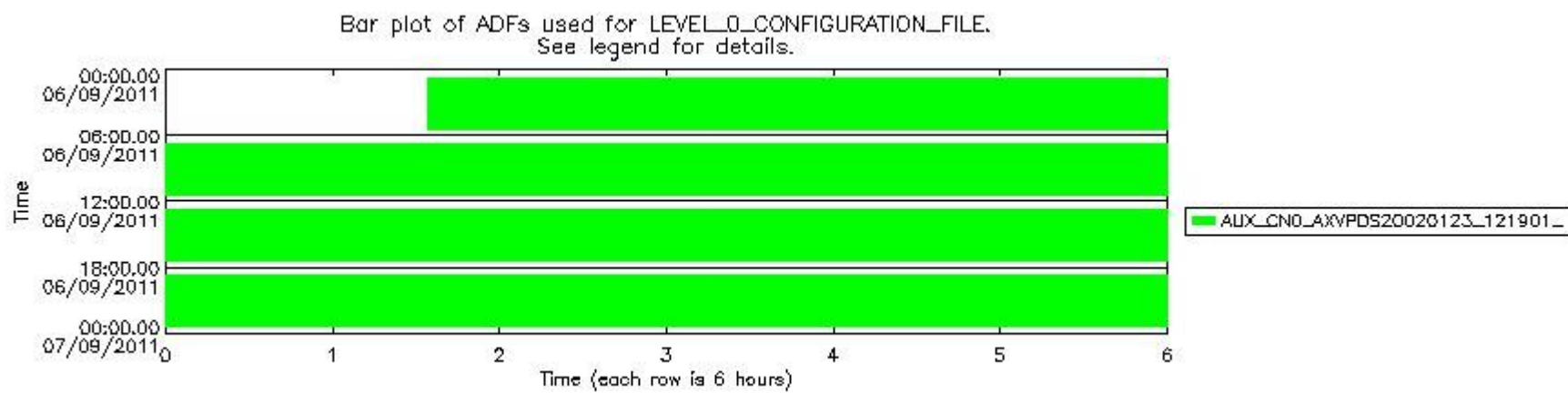
The use of ADFs is shown in two ways:

1. By means of two tables that can be used to find the ADF used for a specific product.
2. By means of plots that show changes in ADF using colours.

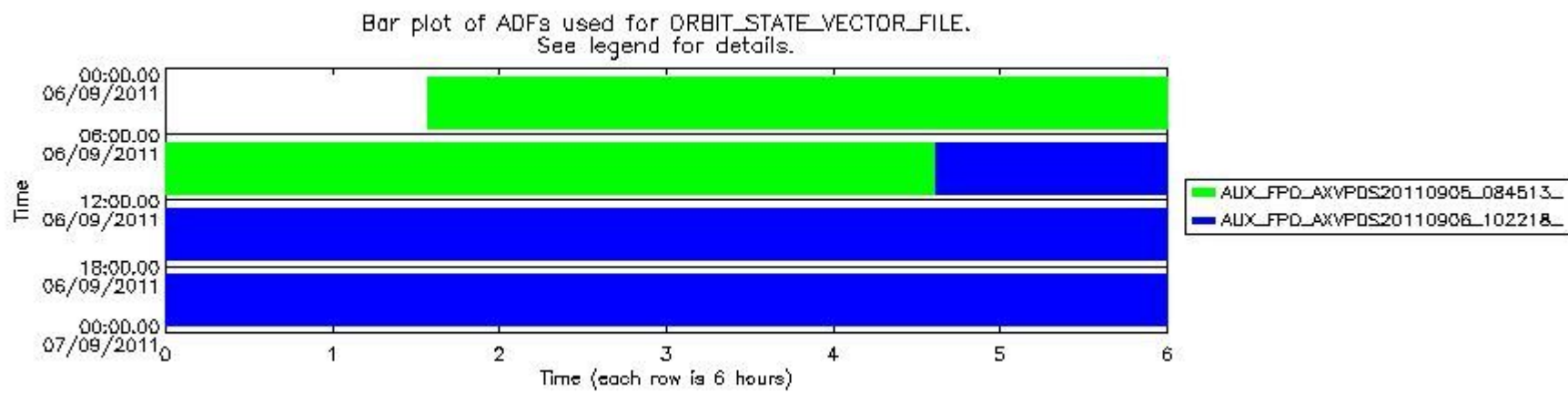
Number	ADF
0	AUX_CN0_AXVPDS20020123_121901_20020101_000000_20200101_000000
1	AUX_FPO_AXVPDS20110905_084513_20110904_194314_20110914_201644
2	AUX_FPO_AXVPDS20110906_102218_20110905_190629_20110915_212014

Number	Product name	#CN0	#FPO
--------	--------------	------	------

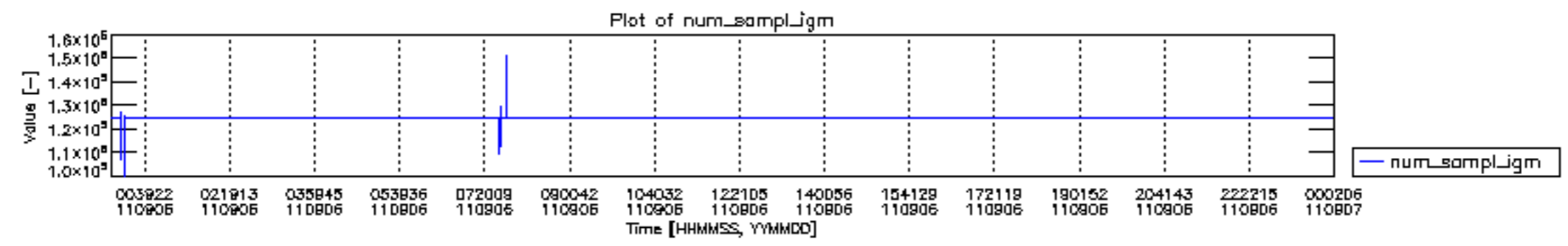
0	MIP_NL__0PNPDE20110906_013424_000043913106_00189_49772_9591.N1	0	1
1	MIP_NL__0PNPDE20110906_024702_000061023106_00190_49773_9592.N1	0	1
2	MIP_NL__0PNPDE20110906_042808_000060663106_00191_49774_9593.N1	0	1
3	MIP_NL__0PNPDK20110906_060841_000041593106_00192_49775_6246.N1	0	1
4	MIP_NL__0PNPDK20110906_071727_000060733106_00193_49776_6247.N1	0	1
5	MIP_NL__0PNPDK20110906_085807_000059793106_00194_49777_6248.N1	0	1
6	MIP_NL__0PNPDK20110906_103700_000059373106_00195_49778_6249.N1	0	2
7	MIP_NL__0PNPDK20110906_121513_000060253106_00196_49779_6250.N1	0	2
8	MIP_NL__0PNPDK20110906_135504_000057803106_00197_49780_6251.N1	0	2
9	MIP_NL__0PNPDK20110906_152944_000059873106_00198_49781_6252.N1	0	2
10	MIP_NL__0PNPDK20110906_170833_000059873106_00199_49782_6253.N1	0	2
11	MIP_NL__0PNPDK20110906_184719_000014373106_00200_49783_6254.N1	0	2
12	MIP_NL__0PNPDK20110906_191117_000045603106_00200_49783_6255.N1	0	2
13	MIP_NL__0PNPDE20110906_202541_000043123106_00201_49784_9594.N1	0	2
14	MIP_NL__0PNPDE20110906_213634_000061673106_00201_49784_9595.N1	0	2
15	MIP_NL__0PNPDE20110906_231822_000060923106_00202_49785_9596.N1	0	2

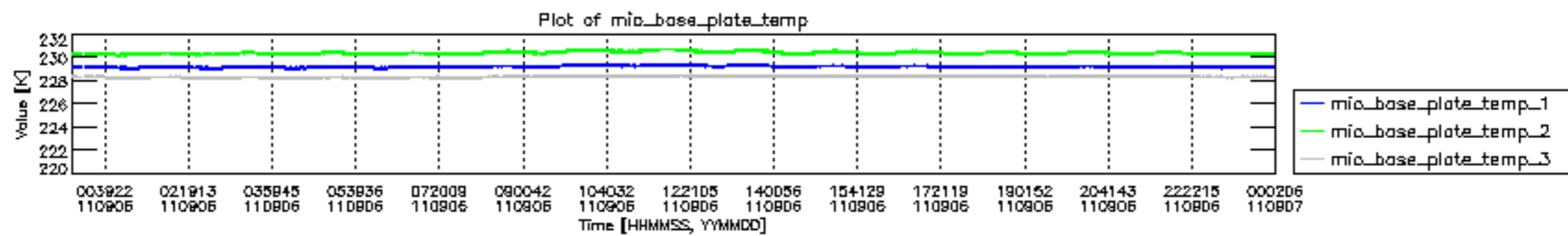


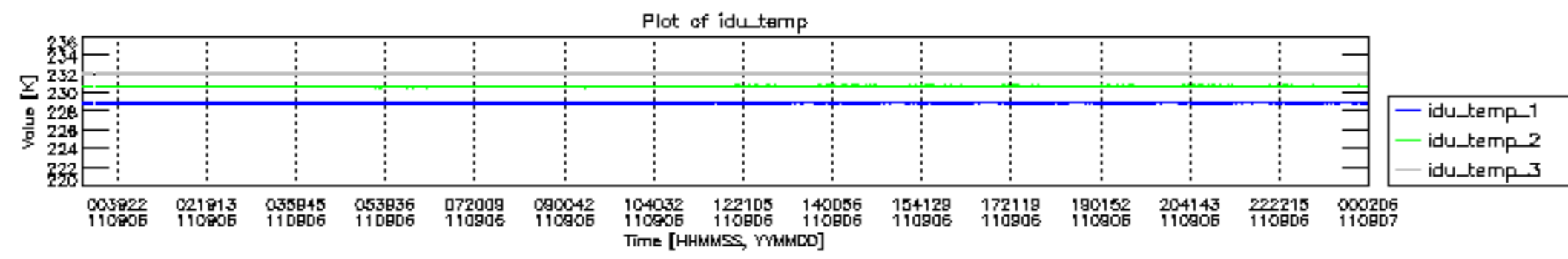
mipas_daily_report_level0_KSPT_L0_4504_N_20110906_12.PNG

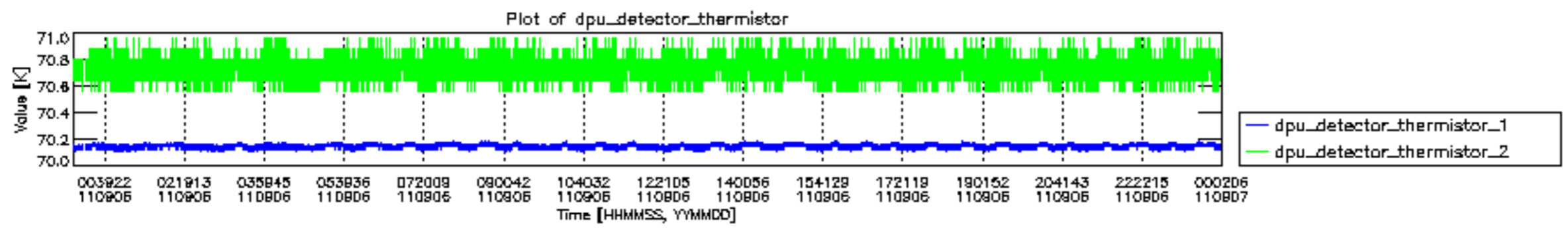


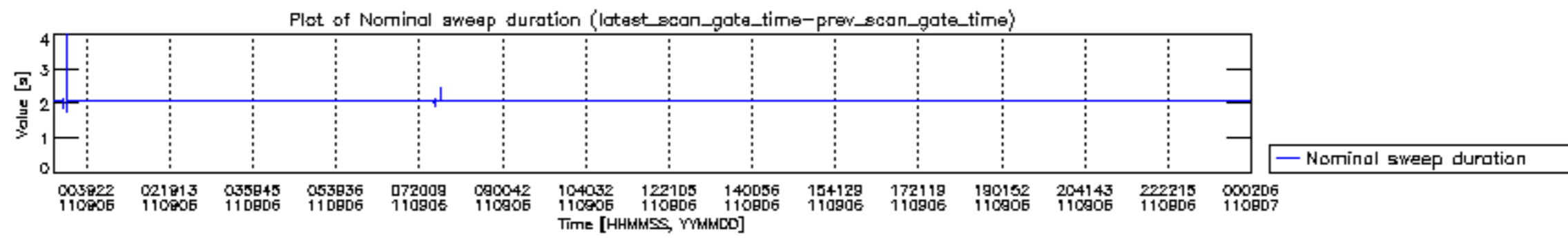
mipas_daily_report_level0_KSPT_L0_4504_N_20110906_13.PNG

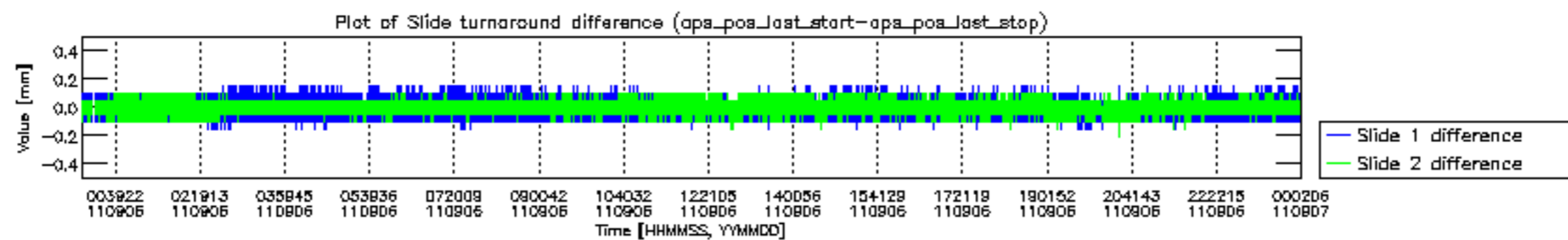


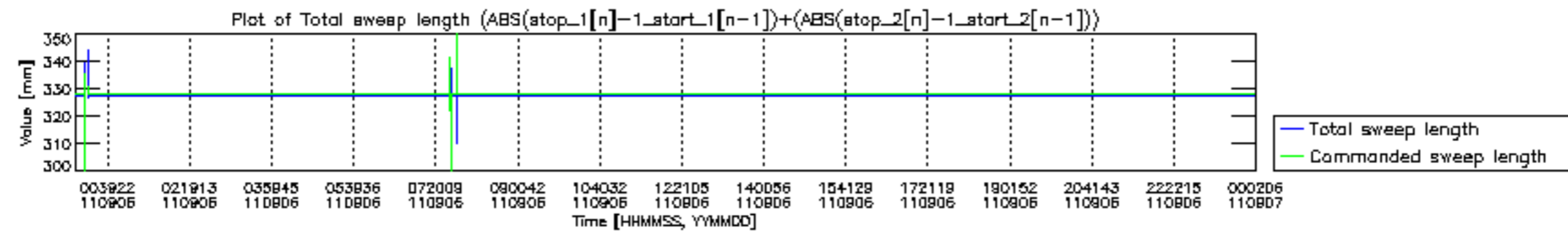


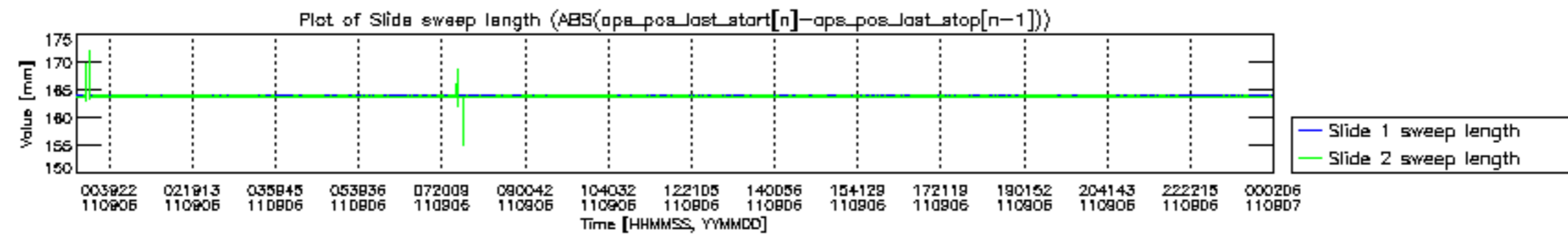


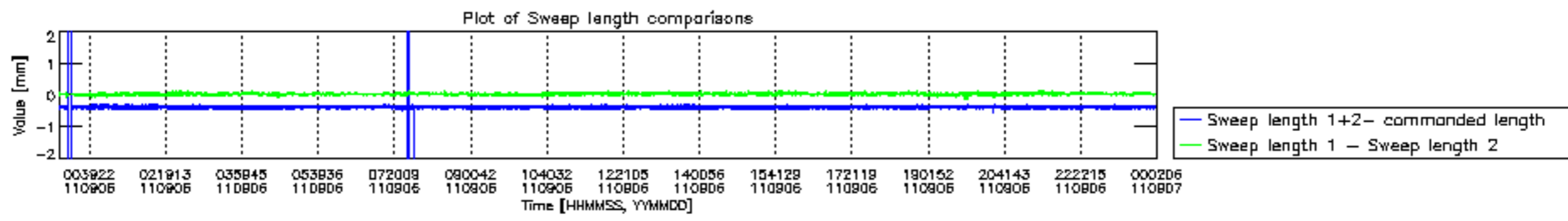


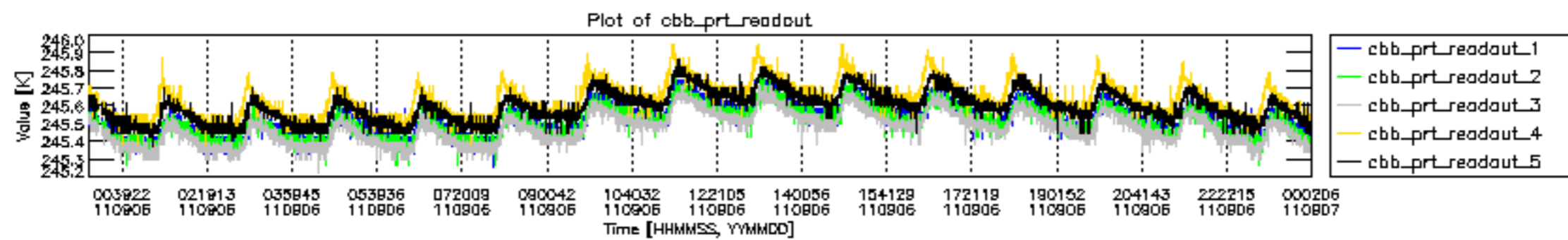


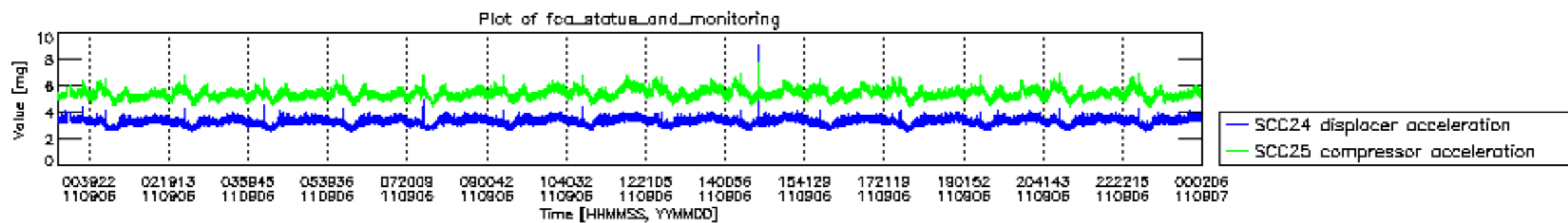












MIPNLOP_MIPSOUPAC_aux_fields_igm_cal, channel statistics plot
 Colour indicates value.

