

## 0. MIPAS Daily Report for level 0 products

### [0.1 General Info](#)

### [0.2 Instrument Operational Performance Parameters](#)

### [0.3 ADF monitoring](#)

## 0.1 General Info

This report contains a daily analysis on parameters extracted from MIPAS level 0 data (The MIP\_NL\_\_0P product).

### 0.1.1 Report summary

The table below shows general characteristics of the data that are included into this report.

Item	Value
Report version	v1.6 08-11-2010
Time of report generation	10SEP2011 05:21:38
Data source version	KSPT_L0/4504-N
Processing scope for products	05SEP2011 00:00:00 to 06SEP2011 00:00:00
Start time of first product within scope	05SEP2011 00:33:08
Stop time of last product within scope	06SEP2011 01:35:27
Total number of level 0 products	16
Number of level 0 products with errors	1

### 0.1.2 Product Quality Indicators per product

The following table shows a summary for each product used in this report.

#	Product name	Start time	Stop time	Prod err	ISP err sign	ISP miss sign	ISP disc sign	rs sign
0	MIP_NL__0PNPDE20110905_003308_000058393106_00174_49757_9584.N1	05SEP2011 00:33:08	05SEP2011 02:10:26	0	0	0	0	0
1	MIP_NL__0PNPDE20110905_020930_000044893106_00175_49758_9585.N1	05SEP2011 02:09:30	05SEP2011 03:24:19	0	0	0	0	0
2	MIP_NL__0PNPDE20110905_050551_000059893106_00177_49760_9587.N1	05SEP2011 05:05:51	05SEP2011 06:45:40	0	0	0	0	0
3	MIP_NL__0PNPDK20110905_064507_000041283106_00178_49761_6235.N1	05SEP2011 06:45:07	05SEP2011 07:53:54	0	0	0	0	0
4	MIP_NL__0PNPDK20110905_075321_000060673106_00179_49762_6236.N1	05SEP2011 07:53:21	05SEP2011 09:34:28	0	0	0	0	0
5	MIP_NL__0PNPDK20110905_093344_000060123106_00180_49763_6237.N1	05SEP2011 09:33:44	05SEP2011 11:13:57	0	0	0	0	0
6	MIP_NL__0PNPDK20110905_111313_000059493106_00181_49764_6238.N1	05SEP2011 11:13:13	05SEP2011 12:52:22	0	0	0	0	0
7	MIP_NL__0PNPDK20110905_125149_000059793106_00182_49765_6245.N1	05SEP2011 12:51:49	05SEP2011 14:31:27	1	1	0	0	0
8	MIP_NL__0PNPDK20110905_132722_000038463106_00182_49765_6240.N1	05SEP2011 13:27:22	05SEP2011 14:31:27	0	0	0	0	0
9	MIP_NL__0PNPDK20110905_143054_000057703106_00183_49766_6241.N1	05SEP2011 14:30:54	05SEP2011 16:07:04	0	0	0	0	0
10	MIP_NL__0PNPDK20110905_160605_000059103106_00184_49767_6242.N1	05SEP2011 16:06:05	05SEP2011 17:44:35	0	0	0	0	0
11	MIP_NL__0PNPDK20110905_174337_000060313106_00185_49768_6243.N1	05SEP2011 17:43:37	05SEP2011 19:24:08	0	0	0	0	0
12	MIP_NL__0PNPDK20110905_192309_000060313106_00186_49769_6244.N1	05SEP2011 19:23:09	05SEP2011 21:03:40	0	0	0	0	0
13	MIP_NL__0PNPDE20110905_210202_000044063106_00187_49770_9588.N1	05SEP2011 21:02:02	05SEP2011 22:15:28	0	0	0	0	0
14	MIP_NL__0PNPDE20110905_221423_000061853106_00187_49770_9589.N1	05SEP2011 22:14:23	05SEP2011 23:57:28	0	0	0	0	0
15	MIP_NL__0PNPDE20110905_235632_000059353106_00188_49771_9590.N1	05SEP2011 23:56:32	06SEP2011 01:35:27	0	0	0	0	0

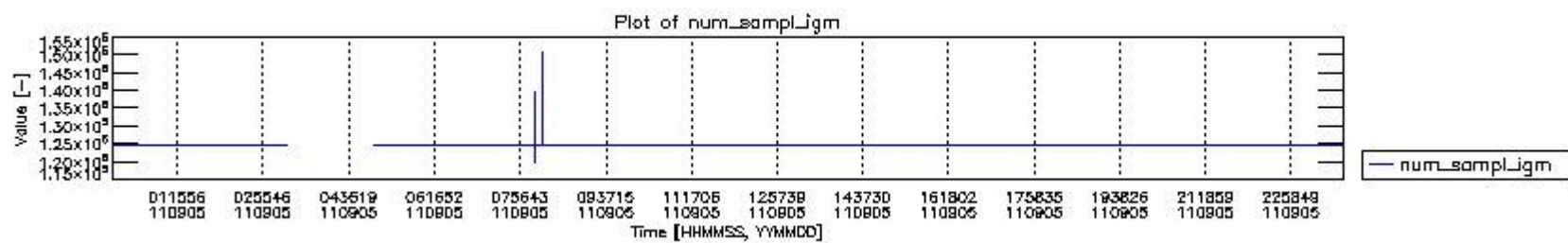
## 0.2 Instrument Operational Performance Parameters

The following plots give an overview of various instrument parameters for this day. The instrument parameters are part of the auxiliary data field within the source packets of the MIP\_NL\_\_0P product. The auxiliary data is normally included twice per interferogram. Note that only the first packet is currently included in monitoring.

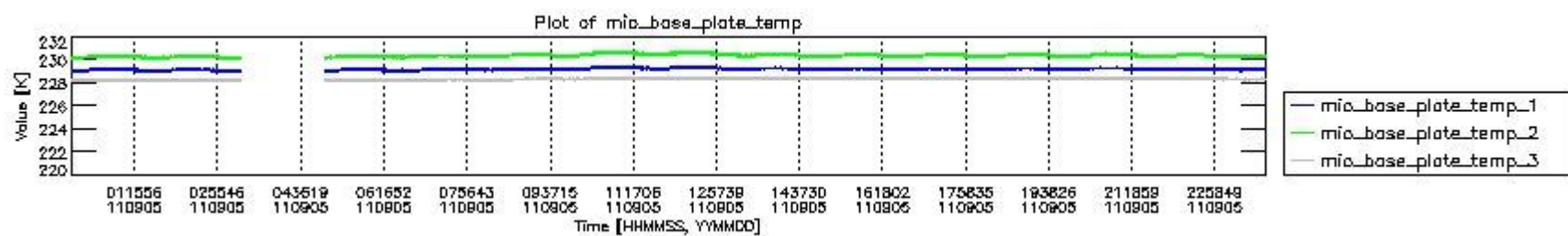
The following table shows the counts of various interferogram number of samples

Number of igm samples	Count [#]	Count [%]
119650	1	0.0025750631
124800	36068	92.877375

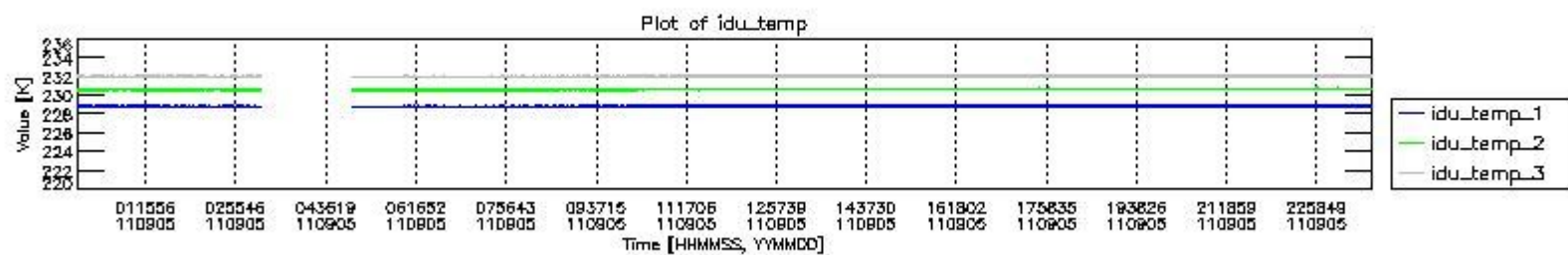
124803	2760	7.1071741
127679	1	0.0025750631
134632	1	0.0025750631
139782	1	0.0025750631
147811	1	0.0025750631
150690	1	0.0025750631



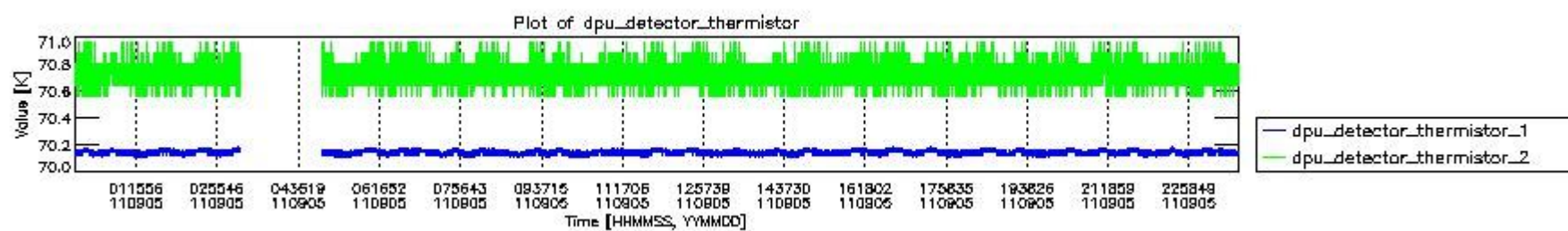
mipas\_daily\_report\_level0\_KSPT\_L0\_4504\_N\_20110905\_0.PNG



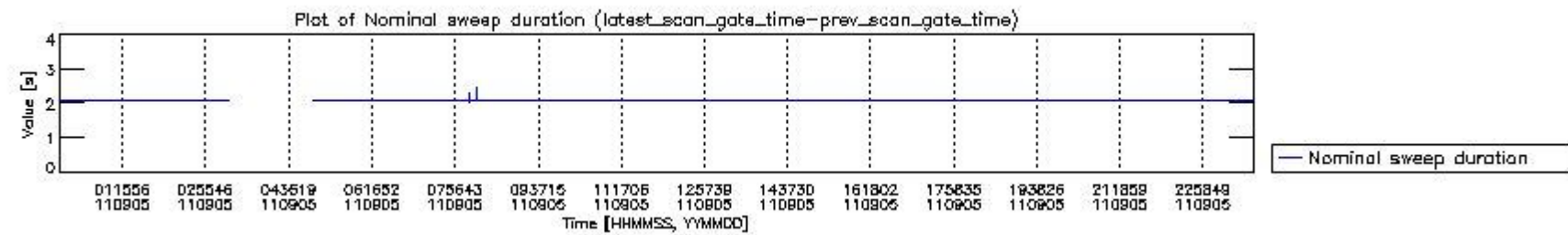
mipas\_daily\_report\_level0\_KSPT\_L0\_4504\_N\_20110905\_1.PNG



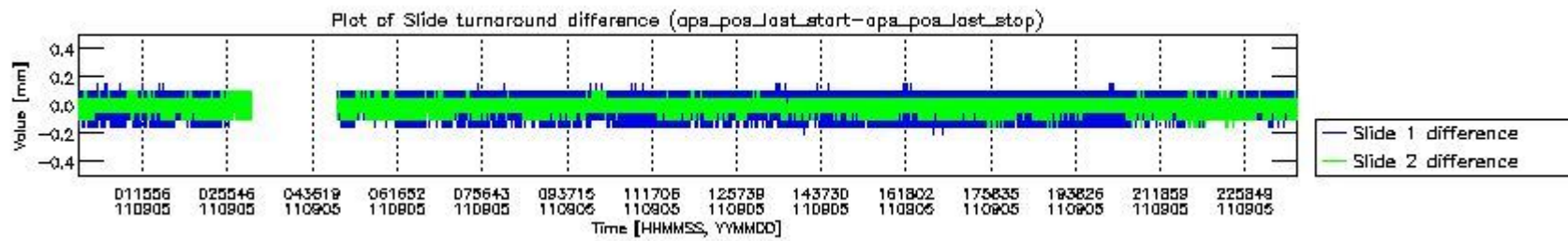
mipas\_daily\_report\_level0\_KSPT\_L0\_4504\_N\_20110905\_2.PNG



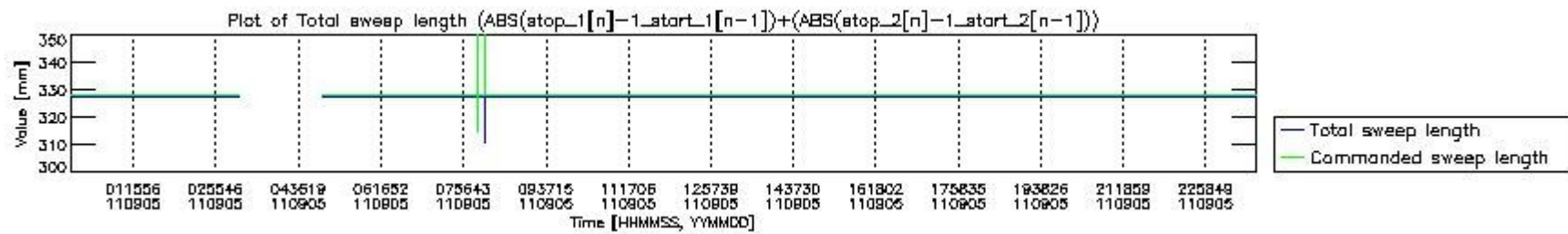
mipas\_daily\_report\_level0\_KSPT\_L0\_4504\_N\_20110905\_3.PNG



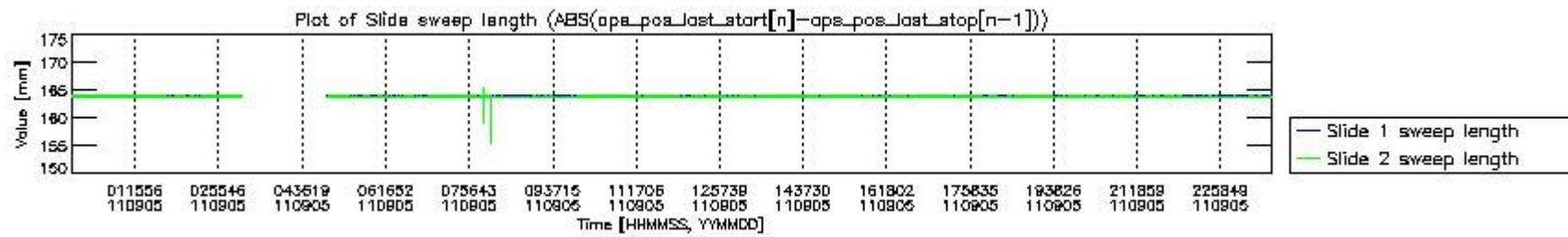
mipas\_daily\_report\_level0\_KSPT\_L0\_4504\_N\_20110905\_4.PNG



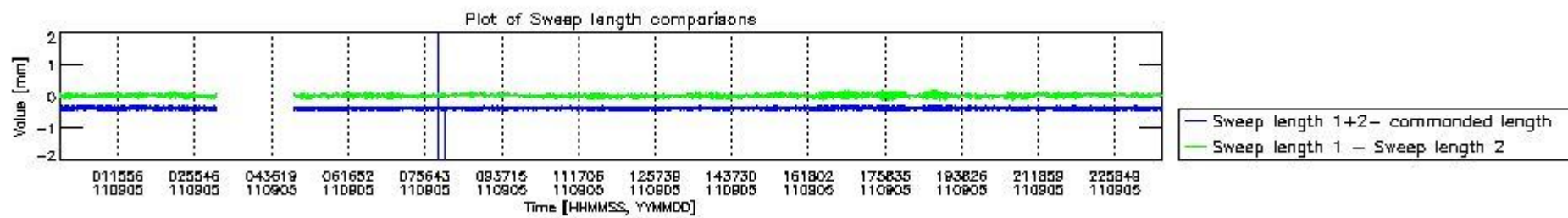
mipas\_daily\_report\_level0\_KSPT\_L0\_4504\_N\_20110905\_5.PNG



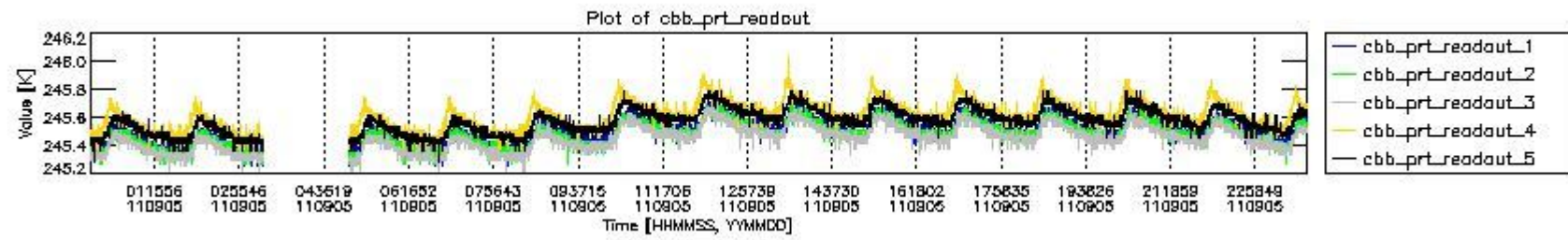
mipas\_daily\_report\_level0\_KSPT\_L0\_4504\_N\_20110905\_6.PNG



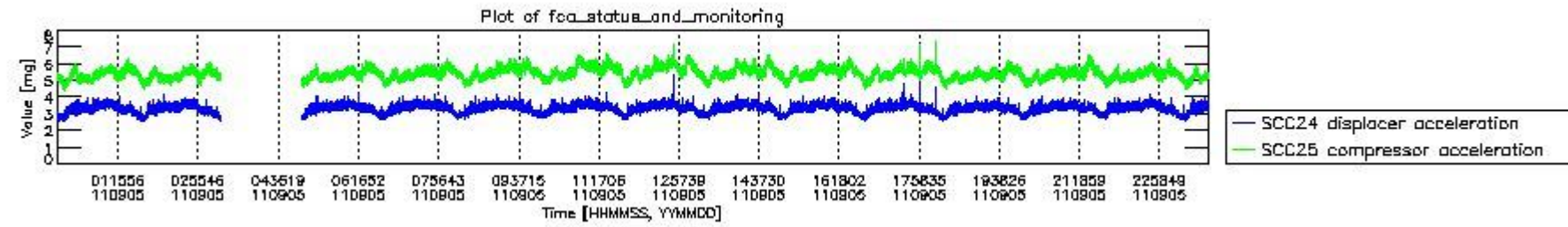
mipas\_daily\_report\_level0\_KSPT\_L0\_4504\_N\_20110905\_7.PNG



mipas\_daily\_report\_level0\_KSPT\_L0\_4504\_N\_20110905\_8.PNG



mipas\_daily\_report\_level0\_KSPT\_L0\_4504\_N\_20110905\_9.PNG

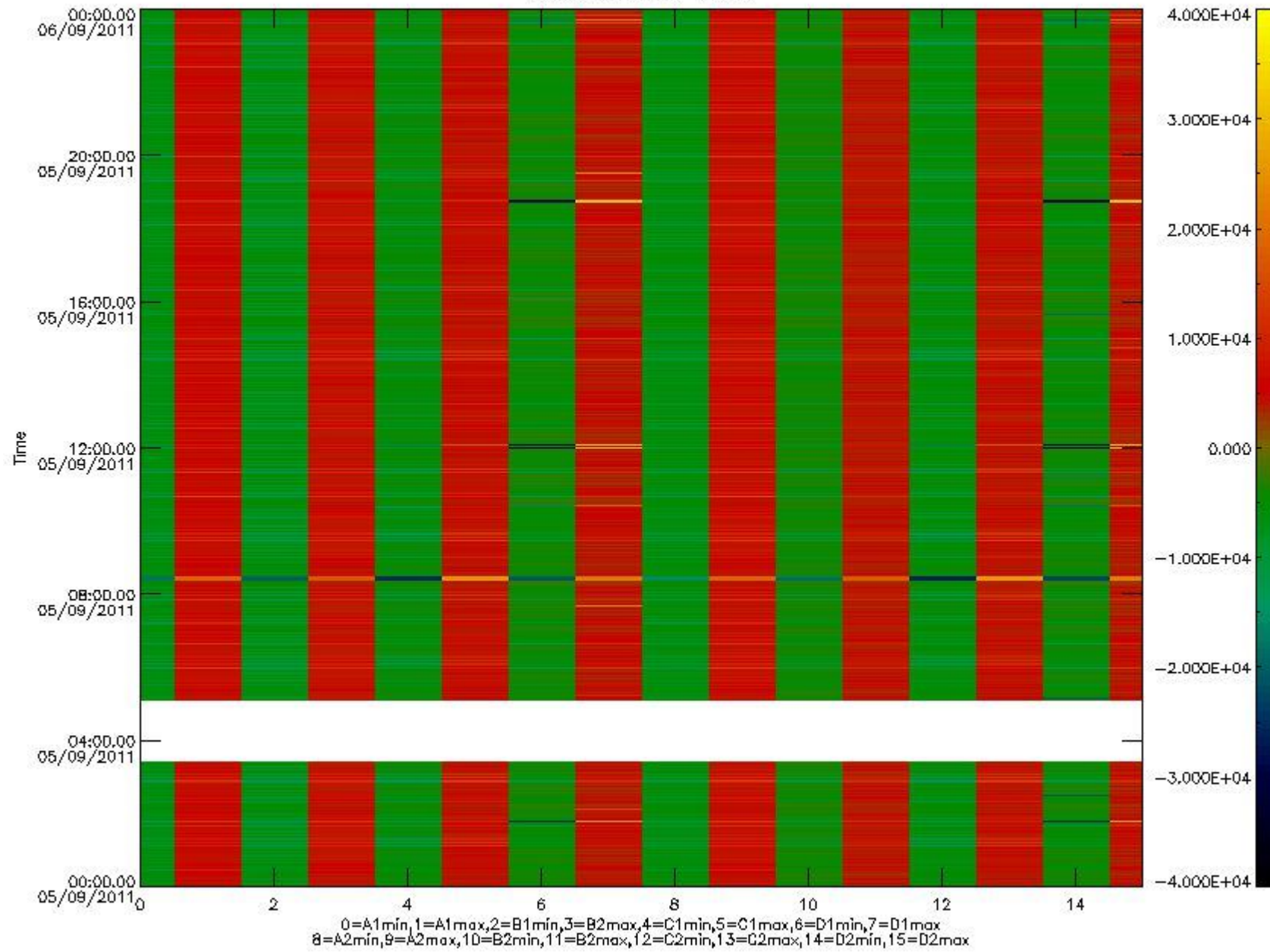


mipas\_daily\_report\_level0\_KSPT\_L0\_4504\_N\_20110905\_10.PNG

The following table shows channel statistics for all channels for this day.

Channel	Min	Max	ADC
A1	-18081	19140	16bit
B1	-20436	17622	16bit
C1	-25517	25385	16bit
D1	-32768	32767	16bit
A2	-15703	19357	16bit
B2	-18679	18364	16bit
C2	-26575	26121	16bit
D2	-32768	32767	16bit

MIPNLOP\_MIPSOUPAC\_aux\_fields\_igm\_cal, channel statistics plot  
Colour indicates value.



mipas\_daily\_report\_level0\_KSPT\_L0\_4504\_N\_20110905\_11.PNG

### 0.3 ADF monitoring

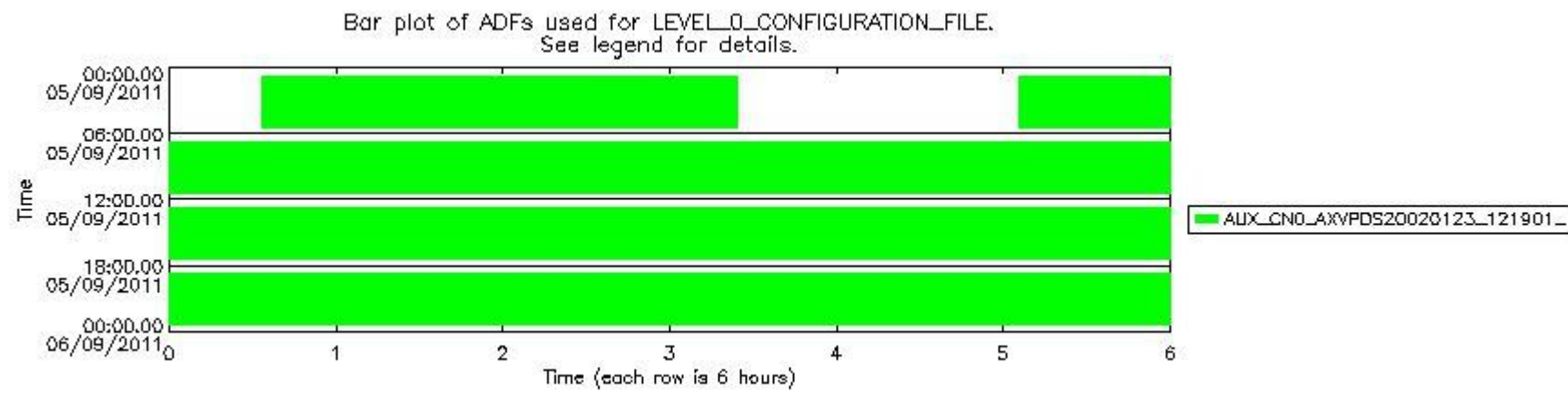
The use of ADFs is shown in two ways:

1. By means of two tables that can be used to find the ADF used for a specific product.
2. By means of plots that show changes in ADF using colours.

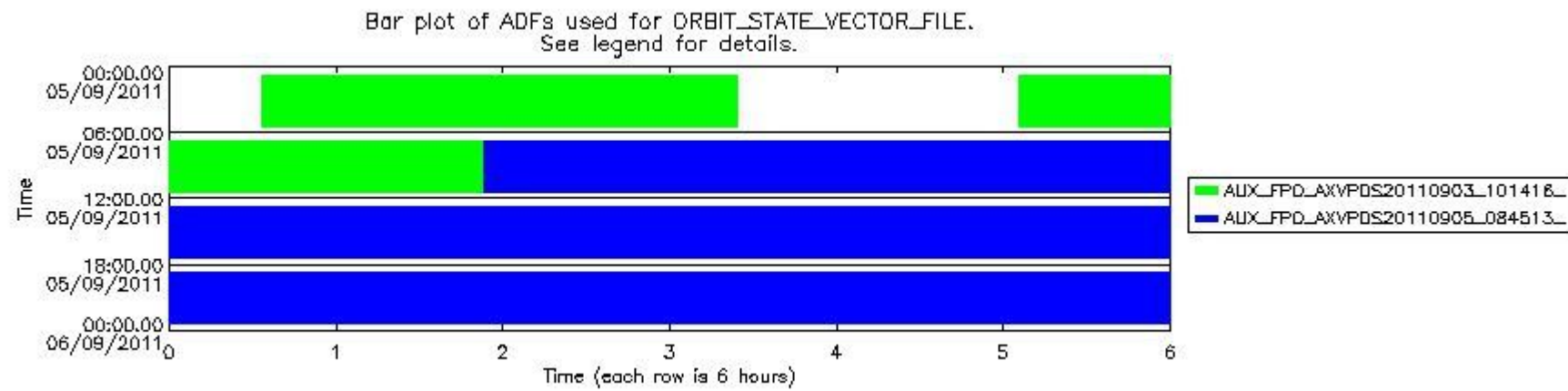
Number	ADF
0	AUX_CN0_AXVPDS20020123_121901_20020101_000000_20200101_000000
1	AUX_FPO_AXVPDS20110903_101416_20110902_191629_20110912_213013
2	AUX_FPO_AXVPDS20110905_084513_20110904_194314_20110914_201644

Number	Product name	#CN0	#FPO
--------	--------------	------	------

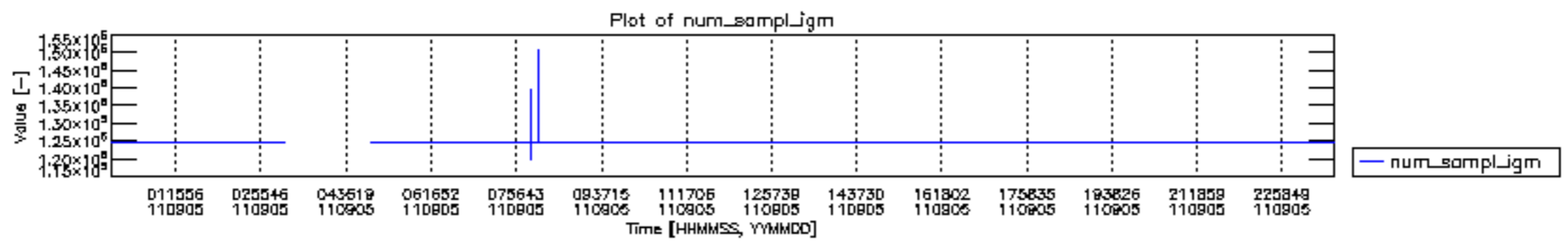
0	MIP_NL__0PNPDE20110905_003308_000058393106_00174_49757_9584.N1	0	1
1	MIP_NL__0PNPDE20110905_020930_000044893106_00175_49758_9585.N1	0	1
2	MIP_NL__0PNPDE20110905_050551_000059893106_00177_49760_9587.N1	0	1
3	MIP_NL__0PNPDK20110905_064507_000041283106_00178_49761_6235.N1	0	1
4	MIP_NL__0PNPDK20110905_075321_000060673106_00179_49762_6236.N1	0	2
5	MIP_NL__0PNPDK20110905_093344_000060123106_00180_49763_6237.N1	0	2
6	MIP_NL__0PNPDK20110905_111313_000059493106_00181_49764_6238.N1	0	2
7	MIP_NL__0PNPDK20110905_125149_000059793106_00182_49765_6245.N1	0	2
8	MIP_NL__0PNPDK20110905_132722_000038463106_00182_49765_6240.N1	0	2
9	MIP_NL__0PNPDK20110905_143054_000057703106_00183_49766_6241.N1	0	2
10	MIP_NL__0PNPDK20110905_160605_000059103106_00184_49767_6242.N1	0	2
11	MIP_NL__0PNPDK20110905_174337_000060313106_00185_49768_6243.N1	0	2
12	MIP_NL__0PNPDK20110905_192309_000060313106_00186_49769_6244.N1	0	2
13	MIP_NL__0PNPDE20110905_210202_000044063106_00187_49770_9588.N1	0	2
14	MIP_NL__0PNPDE20110905_221423_000061853106_00187_49770_9589.N1	0	2
15	MIP_NL__0PNPDE20110905_235632_000059353106_00188_49771_9590.N1	0	2

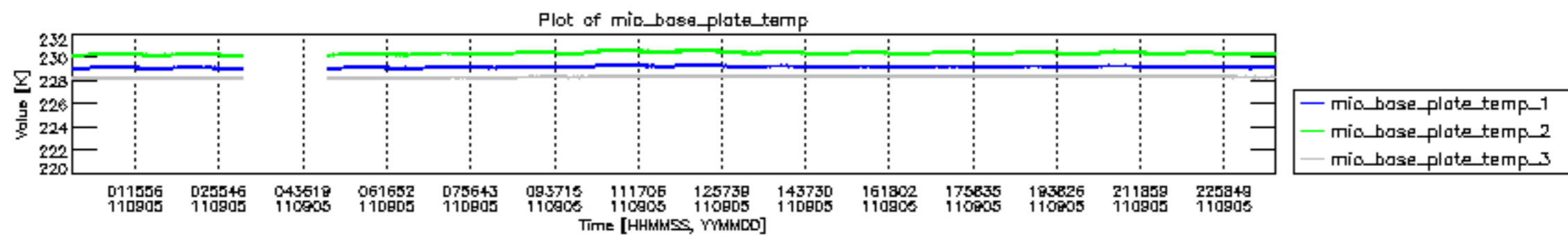


mipas\_daily\_report\_level0\_KSPT\_L0\_4504\_N\_20110905\_12.PNG

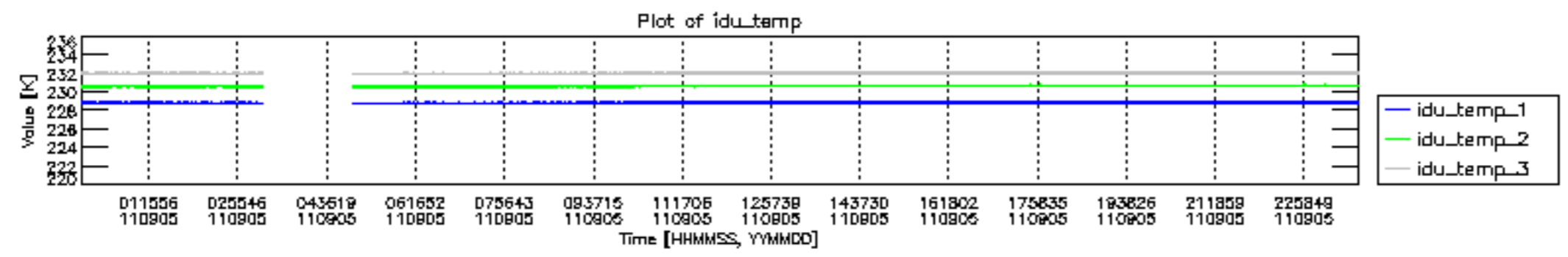


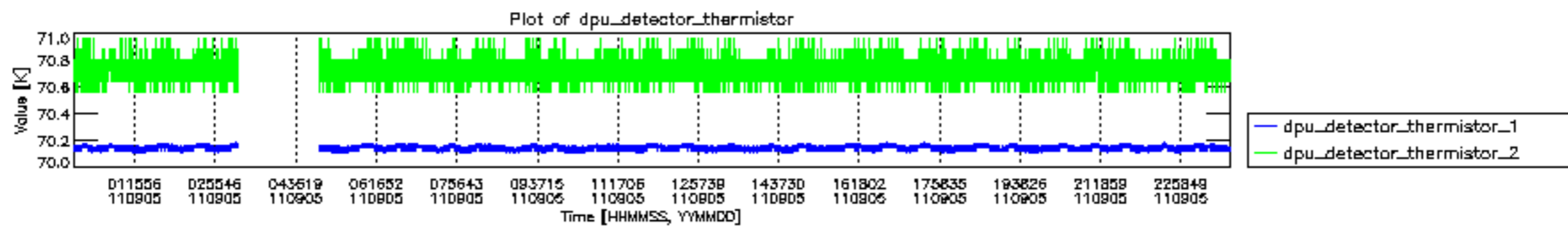
mipas\_daily\_report\_level0\_KSPT\_L0\_4504\_N\_20110905\_13.PNG

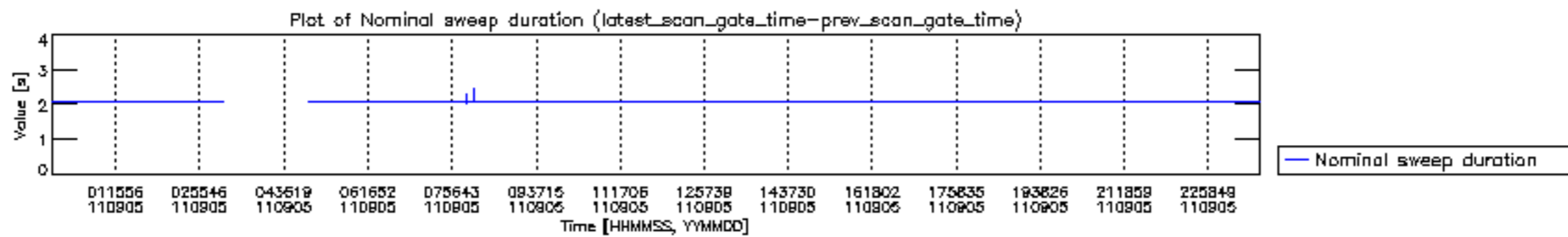


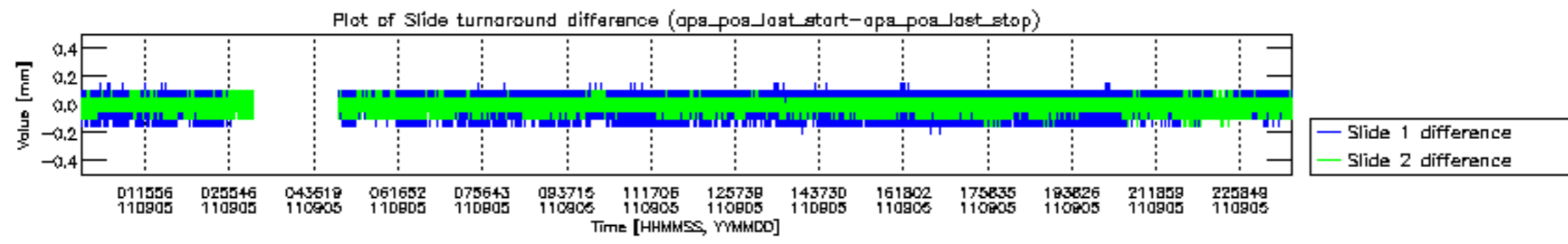


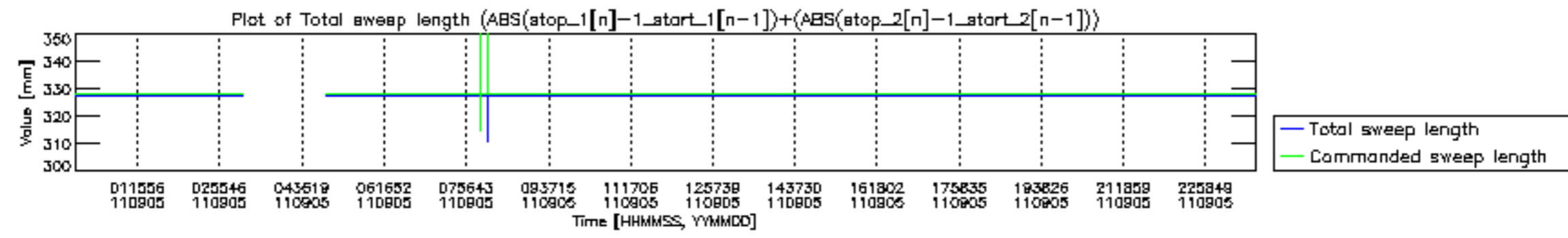


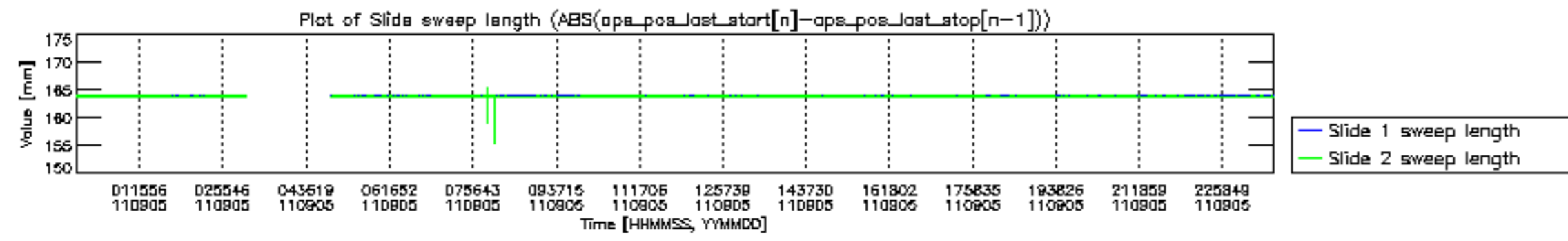


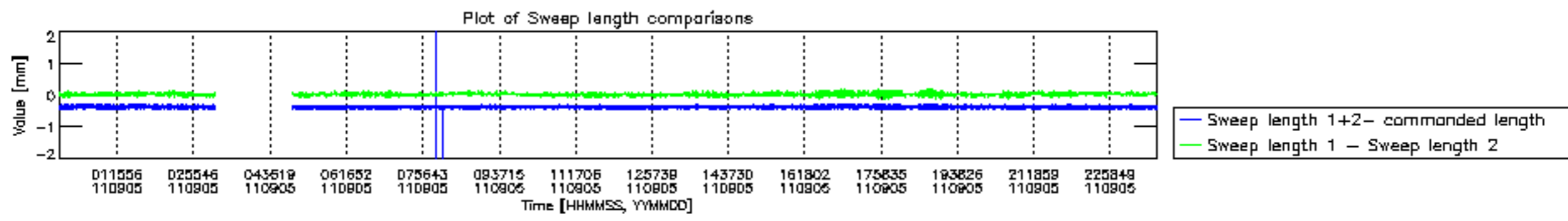


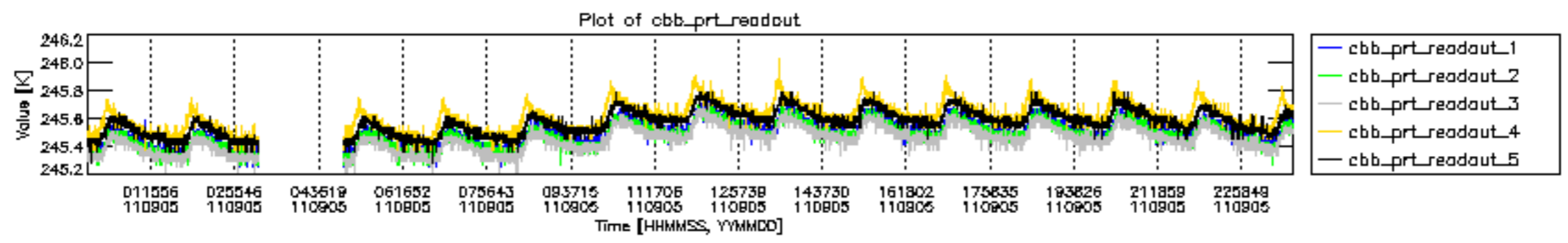




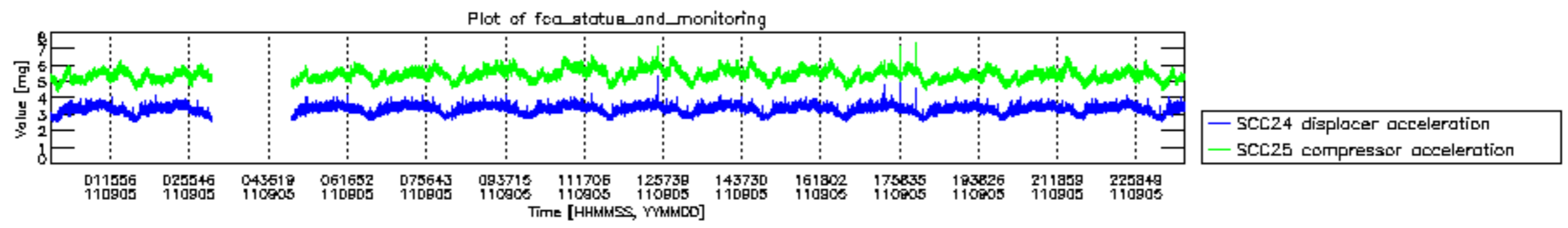




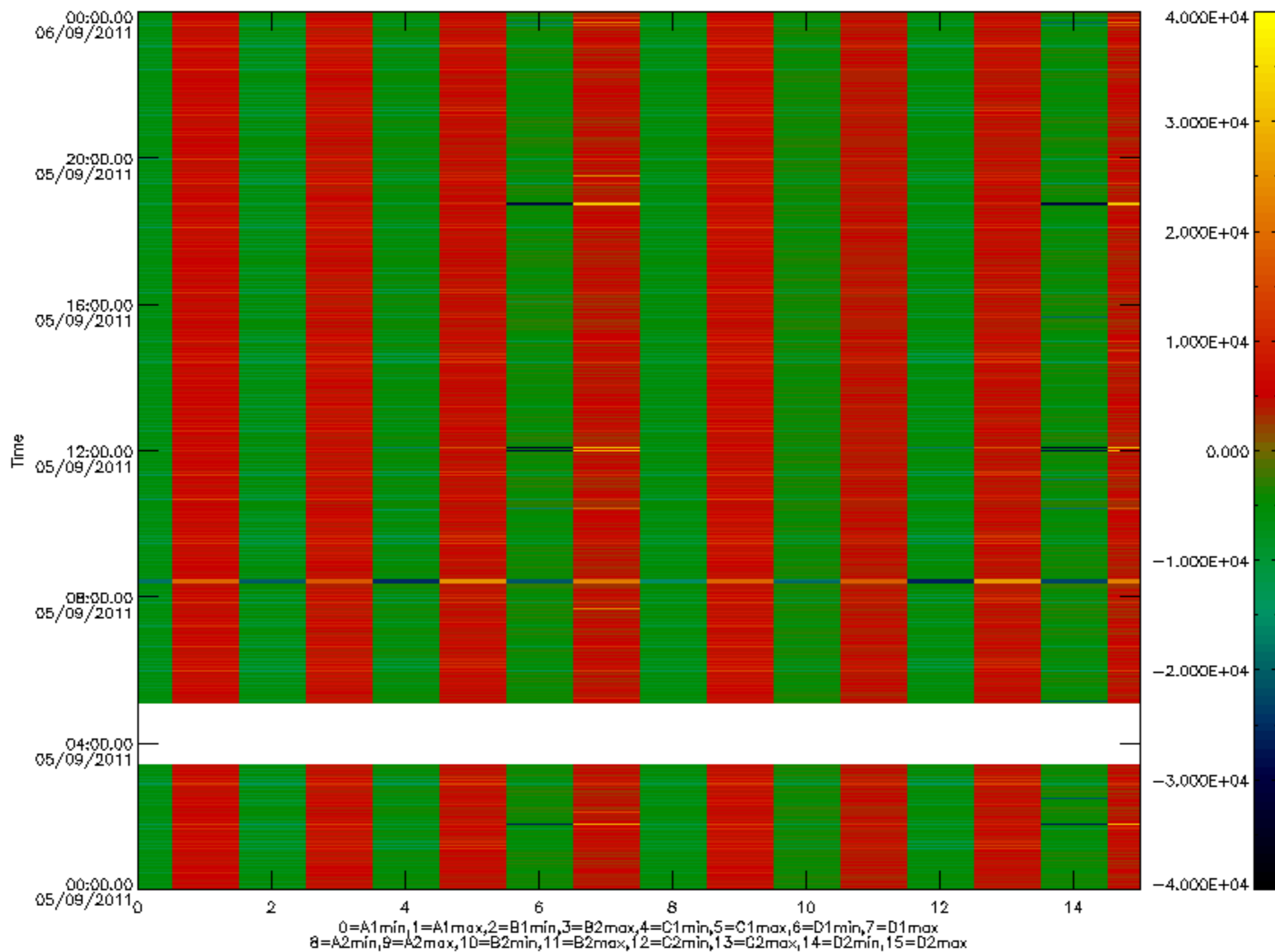


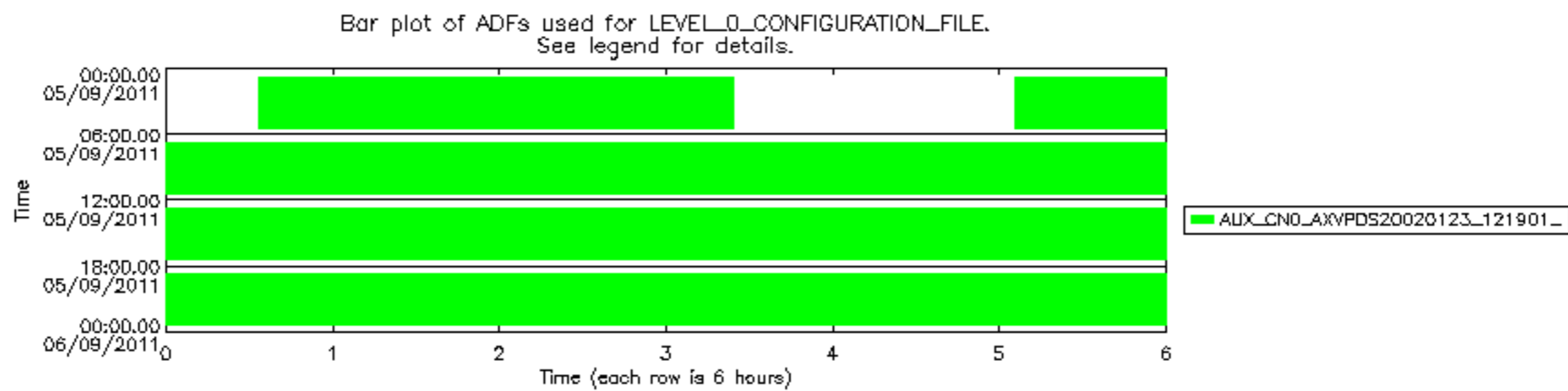






MIPNLOP\_MIPSOUPAC\_aux\_fields\_igm\_cal, channel statistics plot  
 Colour indicates value.





Bar plot of ADFs used for ORBIT\_STATE\_VECTOR\_FILE.  
See legend for details.

