

0. MIPAS Daily Report for level 0 products

[0.1 General Info](#)

[0.2 Instrument Operational Performance Parameters](#)

[0.3 ADF monitoring](#)

0.1 General Info

This report contains a daily analysis on parameters extracted from MIPAS level 0 data (The MIP_NL__0P product).

0.1.1 Report summary

The table below shows general characteristics of the data that are included into this report.

Item	Value
Report version	v1.6 08-11-2010
Time of report generation	23AUG2011 05:23:26
Data source version	KSPT_L0/4504-N
Processing scope for products	18AUG2011 00:00:00 to 19AUG2011 00:00:00
Start time of first product within scope	18AUG2011 01:30:33
Stop time of last product within scope	19AUG2011 00:56:37
Total number of level 0 products	16
Number of level 0 products with errors	0

0.1.2 Product Quality Indicators per product

The following table shows a summary for each product used in this report.

#	Product name	Start time	Stop time	Prod err	ISP err sign	ISP miss sign	ISP disc sign	rs sign
0	MIP_NL__0PNPDE20110818_013033_000044343105_00347_49499_9462.N1	18AUG2011 01:30:33	18AUG2011 02:44:26	0	0	0	0	0
1	MIP_NL__0PNPDE20110818_015141_000031653105_00348_49500_9466.N1	18AUG2011 01:51:41	18AUG2011 02:44:26	0	0	0	0	0
2	MIP_NL__0PNPDE20110818_024353_000061023105_00348_49500_9463.N1	18AUG2011 02:43:53	18AUG2011 04:25:35	0	0	0	0	0
3	MIP_NL__0PNPDE20110818_042501_000060413105_00349_49501_9464.N1	18AUG2011 04:25:01	18AUG2011 06:05:43	0	0	0	0	0
4	MIP_NL__0PNPDK20110818_060509_000041093105_00350_49502_6076.N1	18AUG2011 06:05:09	18AUG2011 07:13:38	0	0	0	0	0
5	MIP_NL__0PNPDK20110818_071305_000061403105_00351_49503_6077.N1	18AUG2011 07:13:05	18AUG2011 08:55:25	0	0	0	0	0
6	MIP_NL__0PNPDK20110818_085444_000059433105_00352_49504_6078.N1	18AUG2011 08:54:44	18AUG2011 10:33:47	0	0	0	0	0
7	MIP_NL__0PNPDK20110818_103301_000060463105_00353_49505_6079.N1	18AUG2011 10:33:01	18AUG2011 12:13:47	0	0	0	0	0
8	MIP_NL__0PNPDK20110818_121313_000059163105_00354_49506_6080.N1	18AUG2011 12:13:13	18AUG2011 13:51:49	0	0	0	0	0
9	MIP_NL__0PNPDK20110818_135114_000058873105_00355_49507_6081.N1	18AUG2011 13:51:14	18AUG2011 15:29:21	0	0	0	0	0
10	MIP_NL__0PNPDK20110818_152847_000059163105_00356_49508_6082.N1	18AUG2011 15:28:47	18AUG2011 17:07:23	0	0	0	0	0
11	MIP_NL__0PNPDK20110818_170629_000058493105_00357_49509_6083.N1	18AUG2011 17:06:29	18AUG2011 18:43:58	0	0	0	0	0
12	MIP_NL__0PNPDK20110818_184304_000060483105_00358_49510_6084.N1	18AUG2011 18:43:04	18AUG2011 20:23:52	0	0	0	0	0
13	MIP_NL__0PNPDE20110818_202255_000043163105_00359_49511_9467.N1	18AUG2011 20:22:55	18AUG2011 21:34:51	0	0	0	0	0
14	MIP_NL__0PNPDE20110818_213355_000061153105_00359_49511_9468.N1	18AUG2011 21:33:55	18AUG2011 23:15:49	0	0	0	0	0
15	MIP_NL__0PNPDE20110818_231447_000061103105_00360_49512_9469.N1	18AUG2011 23:14:47	19AUG2011 00:56:37	0	0	0	0	0

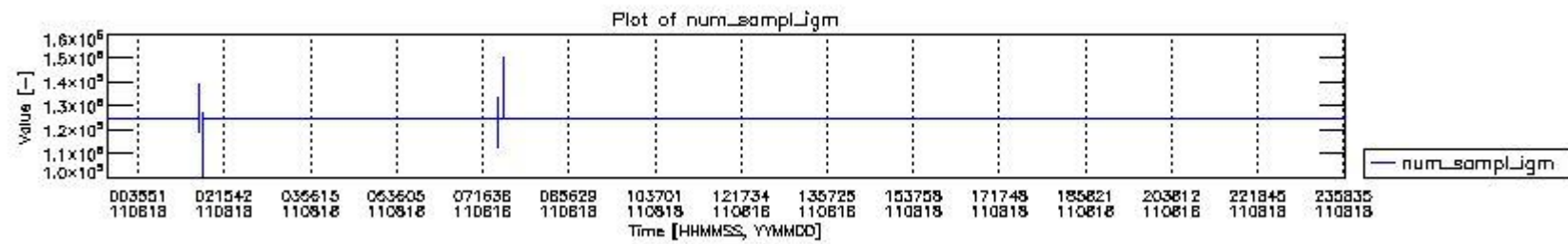
0.2 Instrument Operational Performance Parameters

The following plots give an overview of various instrument parameters for this day. The instrument parameters are part of the auxiliary data field within the source packets of the MIP_NL__0P product. The auxiliary data is normally included twice per interferogram. Note that only the first packet is currently included in monitoring.

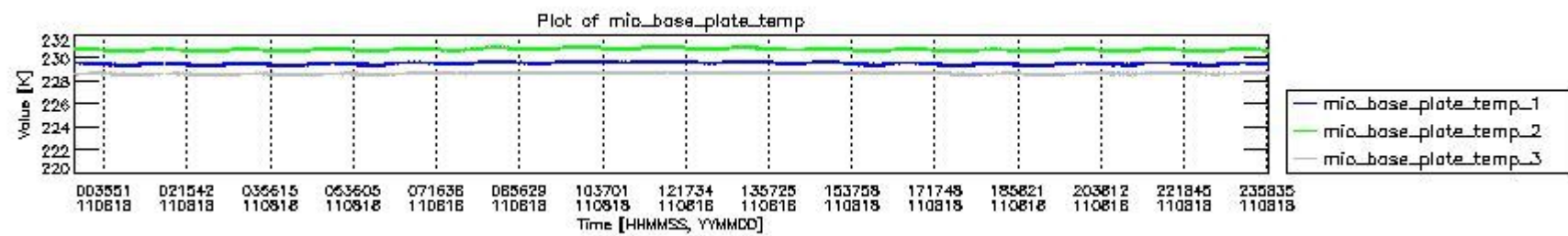
The following table shows the counts of various interferogram number of samples

Number of igm samples	Count [#]	Count [%]
100557	1	0.0024170353
113183	1	0.0024170353

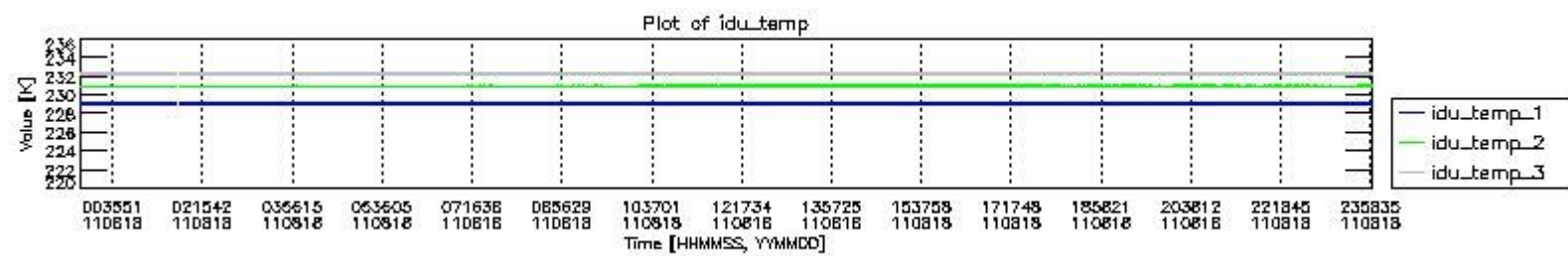
119279	1	0.0024170353
121698	1	0.0024170353
124800	38437	92.903584
124803	2924	7.0674111
125809	1	0.0024170353
126818	1	0.0024170353
127605	1	0.0024170353
133315	1	0.0024170353
133890	1	0.0024170353
139411	1	0.0024170353
147737	1	0.0024170353
150542	1	0.0024170353



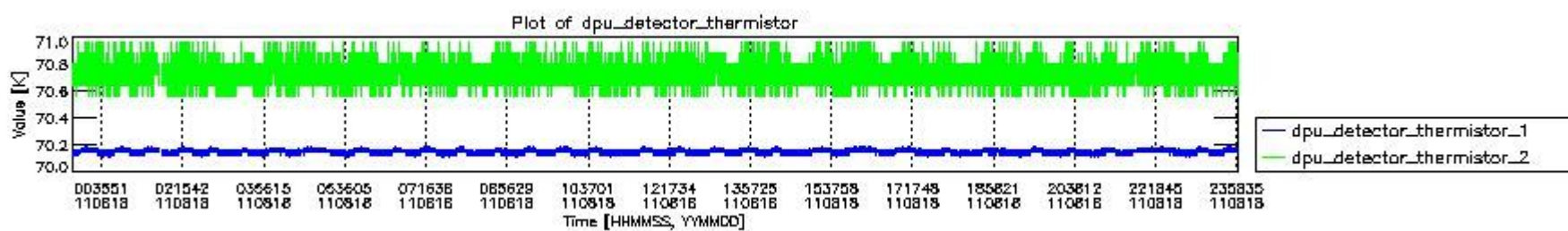
mipas_daily_report_level0_KSPT_L0_4504_N_20110818_0.PNG



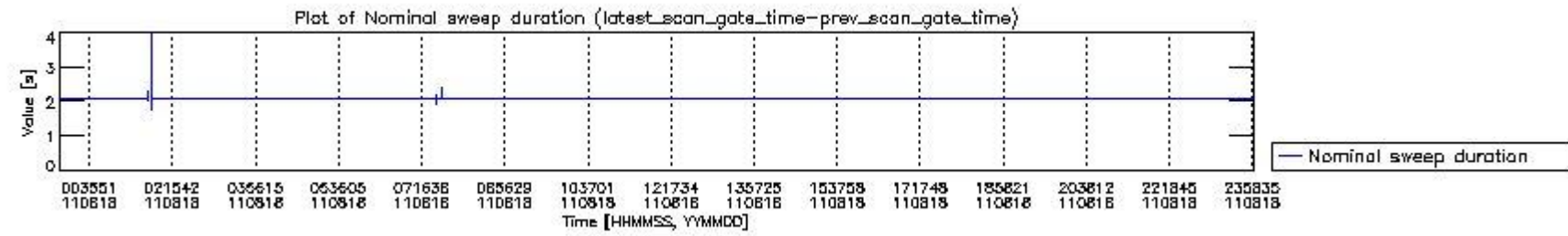
mipas_daily_report_level0_KSPT_L0_4504_N_20110818_1.PNG



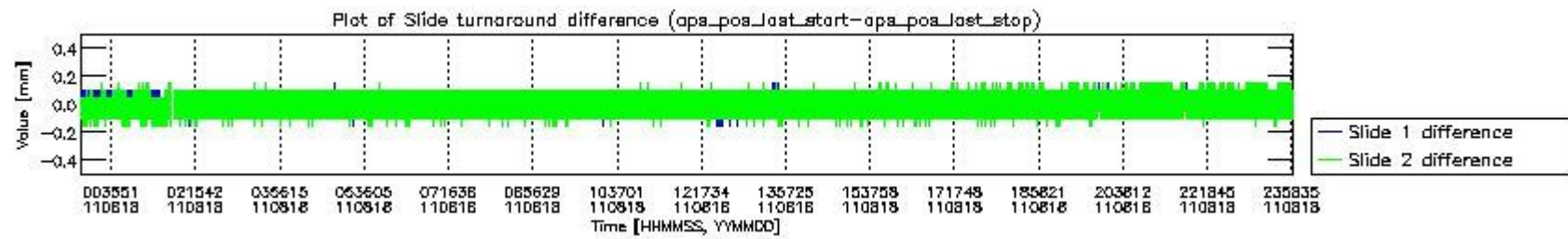
mipas_daily_report_level0_KSPT_L0_4504_N_20110818_2.PNG



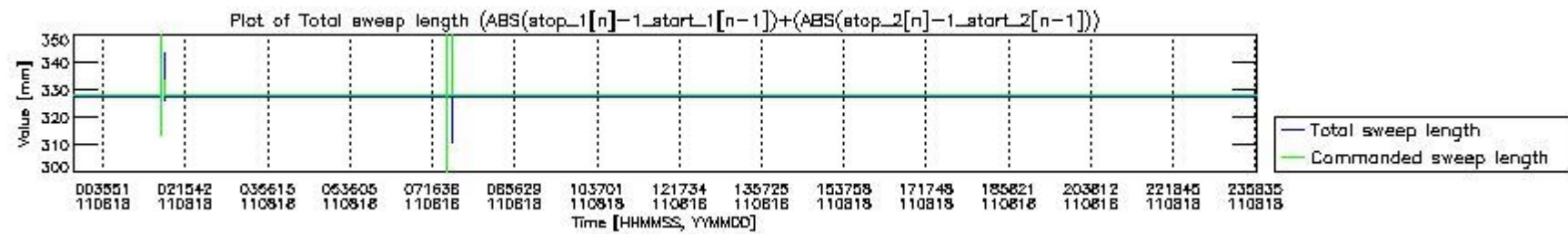
mipas_daily_report_level0_KSPT_L0_4504_N_20110818_3.PNG



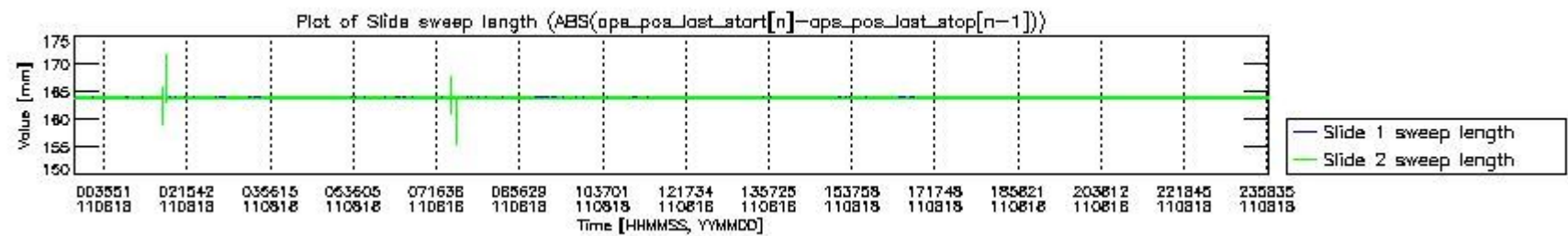
mipas_daily_report_level0_KSPT_L0_4504_N_20110818_4.PNG



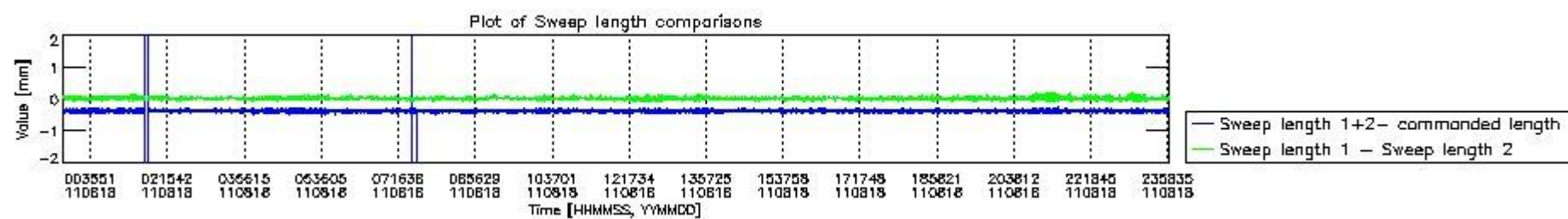
mipas_daily_report_level0_KSPT_L0_4504_N_20110818_5.PNG



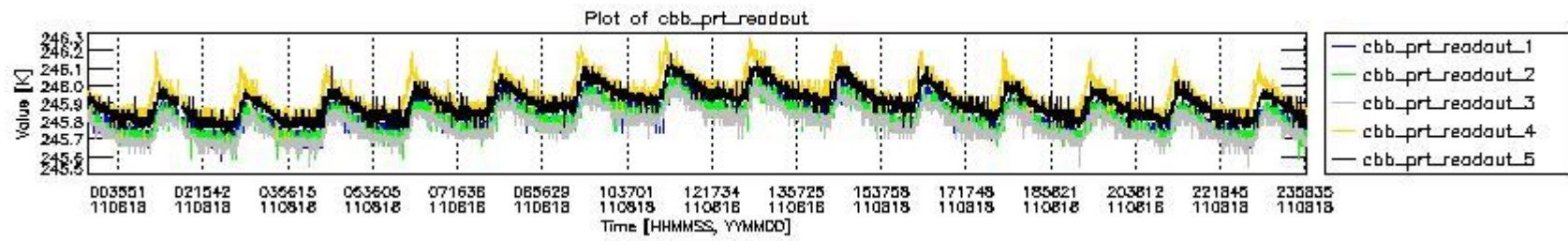
mipas_daily_report_level0_KSPT_L0_4504_N_20110818_6.PNG



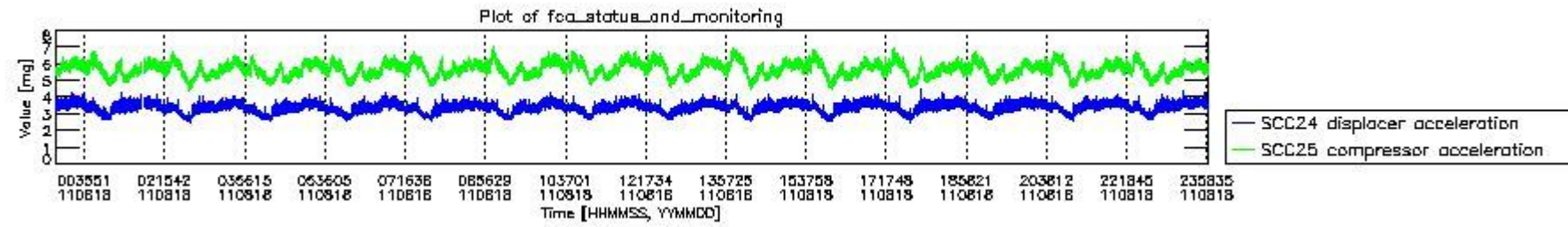
mipas_daily_report_level0_KSPT_L0_4504_N_20110818_7.PNG



mipas_daily_report_level0_KSPT_L0_4504_N_20110818_8.PNG



mipas_daily_report_level0_KSPT_L0_4504_N_20110818_9.PNG

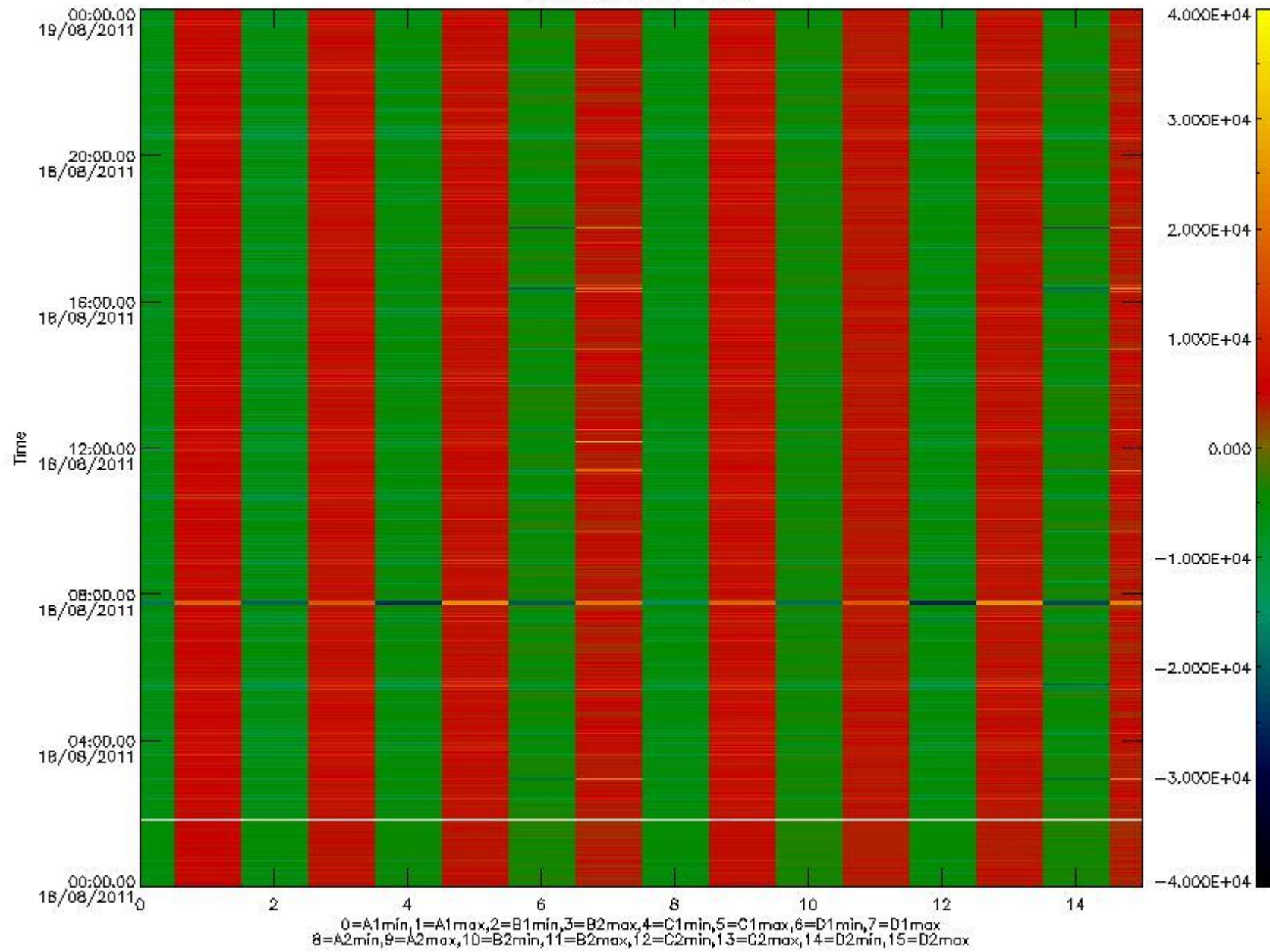


mipas_daily_report_level0_KSPT_L0_4504_N_20110818_10.PNG

The following table shows channel statistics for all channels for this day.

Channel	Min	Max	ADC
A1	-18252	19645	16bit
B1	-20696	17799	16bit
C1	-32768	32767	16bit
D1	-32768	32767	16bit
A2	-15832	19530	16bit
B2	-18937	18591	16bit
C2	-32768	32767	16bit
D2	-32768	32767	16bit

MIPNLOP_MIPSOUPAC_aux_fields_igm_cal, channel statistics plot
Colour indicates value.



mipas_daily_report_level0_KSPT_L0_4504_N_20110818_11.PNG

0.3 ADF monitoring

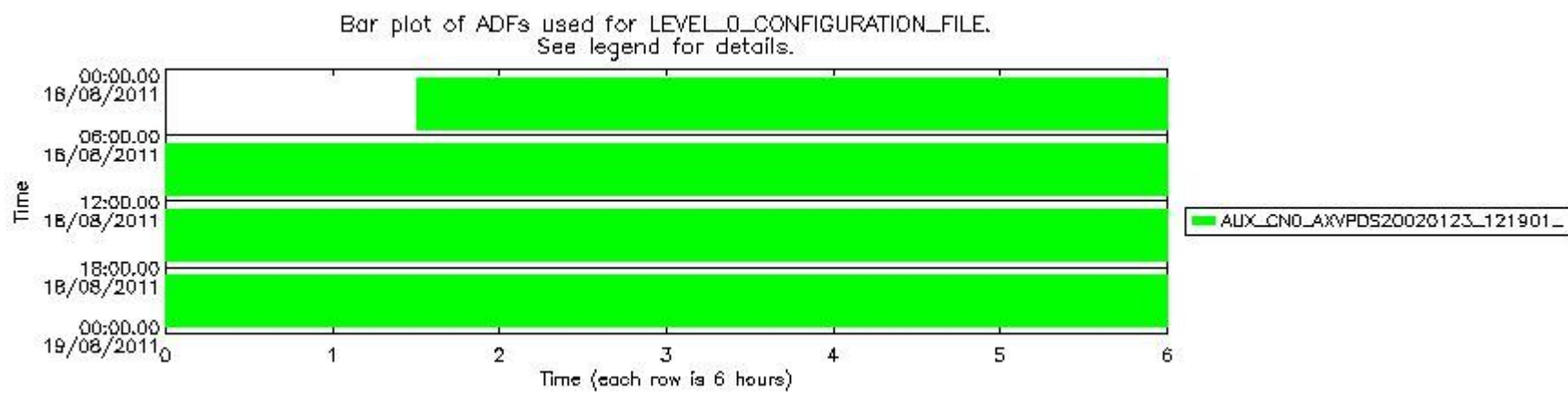
The use of ADFs is shown in two ways:

1. By means of two tables that can be used to find the ADF used for a specific product.
2. By means of plots that show changes in ADF using colours.

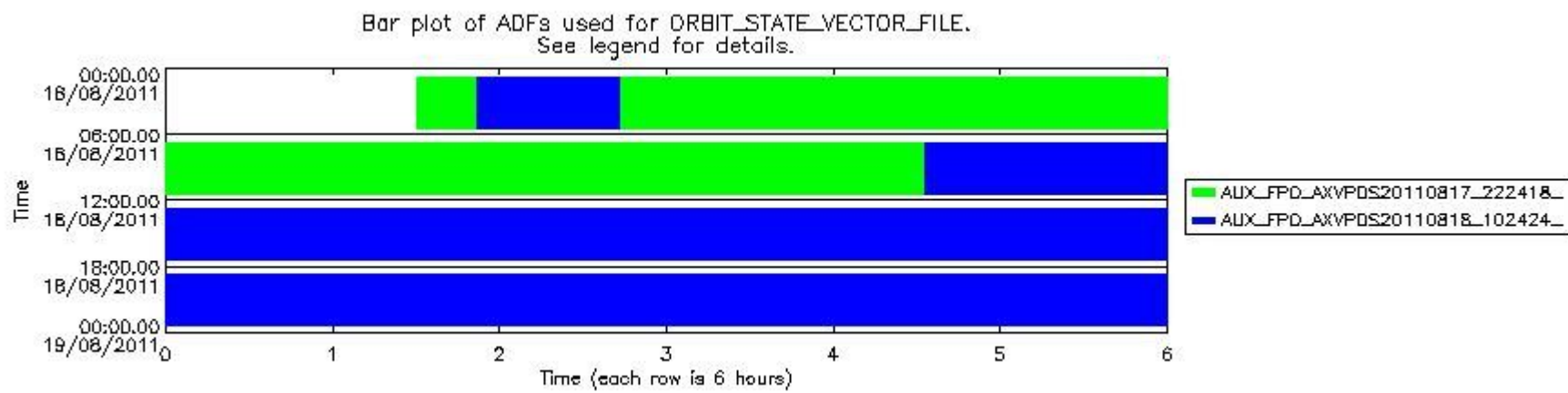
Number	ADF
0	AUX_CN0_AXVPDS20020123_121901_20020101_000000_20200101_000000
1	AUX_FPO_AXVPDS20110817_222418_20110817_104145_20110827_125532
2	AUX_FPO_AXVPDS20110818_102424_20110817_190255_20110827_211642

Number	Product name	#CN0	#FPO
--------	--------------	------	------

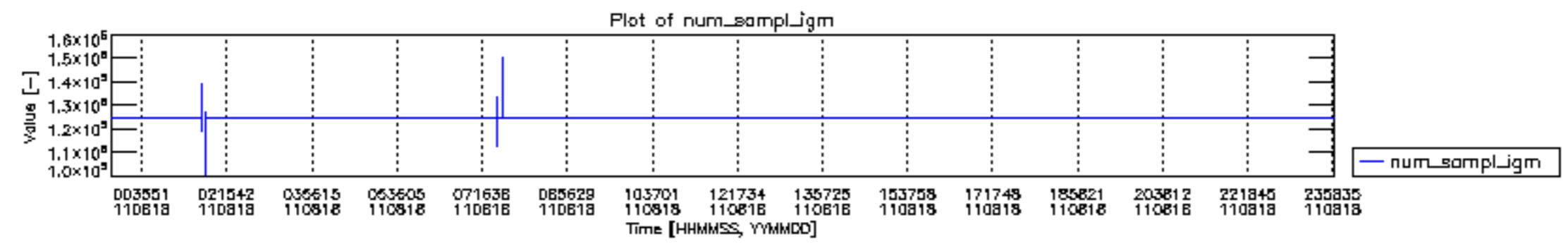
0	MIP_NL__0PNPDE20110818_013033_000044343105_00347_49499_9462.N1	0	1
1	MIP_NL__0PNPDE20110818_015141_000031653105_00348_49500_9466.N1	0	2
2	MIP_NL__0PNPDE20110818_024353_000061023105_00348_49500_9463.N1	0	1
3	MIP_NL__0PNPDE20110818_042501_000060413105_00349_49501_9464.N1	0	1
4	MIP_NL__0PNPDK20110818_060509_000041093105_00350_49502_6076.N1	0	1
5	MIP_NL__0PNPDK20110818_071305_000061403105_00351_49503_6077.N1	0	1
6	MIP_NL__0PNPDK20110818_085444_000059433105_00352_49504_6078.N1	0	1
7	MIP_NL__0PNPDK20110818_103301_000060463105_00353_49505_6079.N1	0	2
8	MIP_NL__0PNPDK20110818_121313_000059163105_00354_49506_6080.N1	0	2
9	MIP_NL__0PNPDK20110818_135114_000058873105_00355_49507_6081.N1	0	2
10	MIP_NL__0PNPDK20110818_152847_000059163105_00356_49508_6082.N1	0	2
11	MIP_NL__0PNPDK20110818_170629_000058493105_00357_49509_6083.N1	0	2
12	MIP_NL__0PNPDK20110818_184304_000060483105_00358_49510_6084.N1	0	2
13	MIP_NL__0PNPDE20110818_202255_000043163105_00359_49511_9467.N1	0	2
14	MIP_NL__0PNPDE20110818_213355_000061153105_00359_49511_9468.N1	0	2
15	MIP_NL__0PNPDE20110818_231447_000061103105_00360_49512_9469.N1	0	2

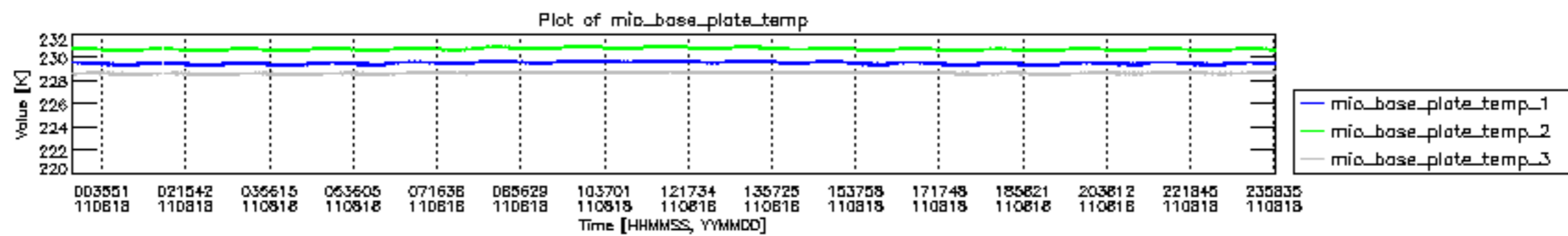


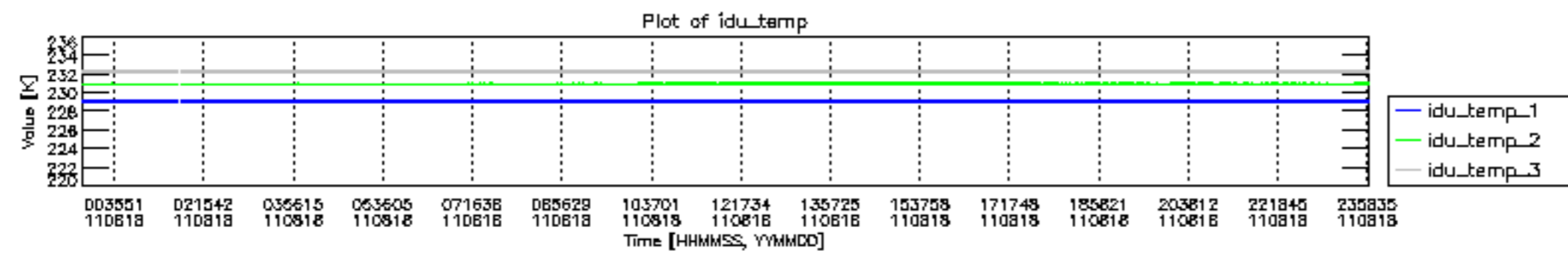
mipas_daily_report_level0_KSPT_L0_4504_N_20110818_12.PNG

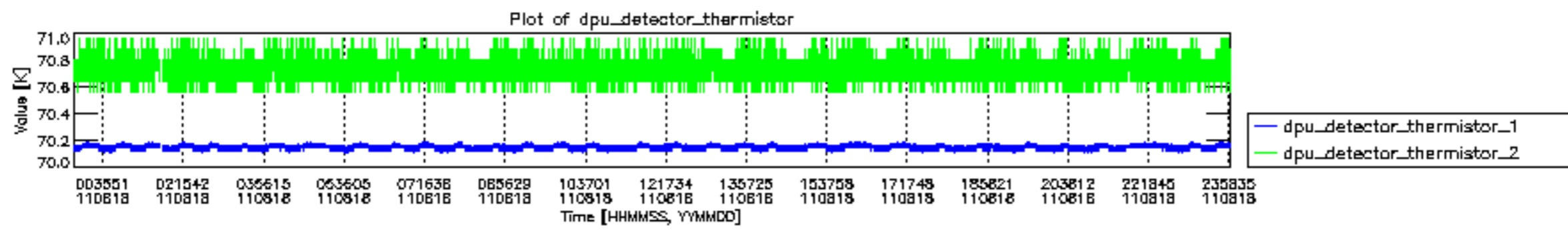


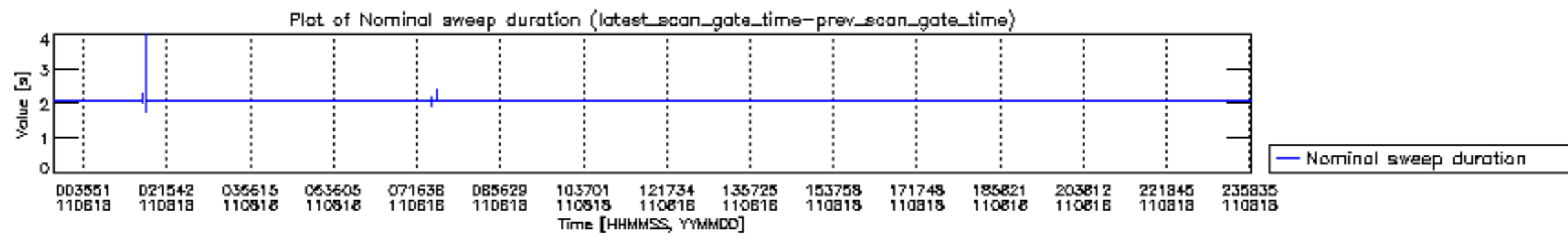
mipas_daily_report_level0_KSPT_L0_4504_N_20110818_13.PNG

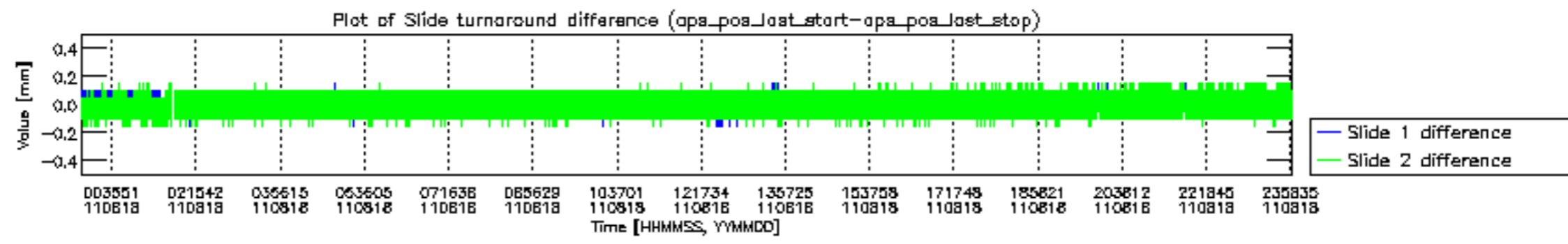


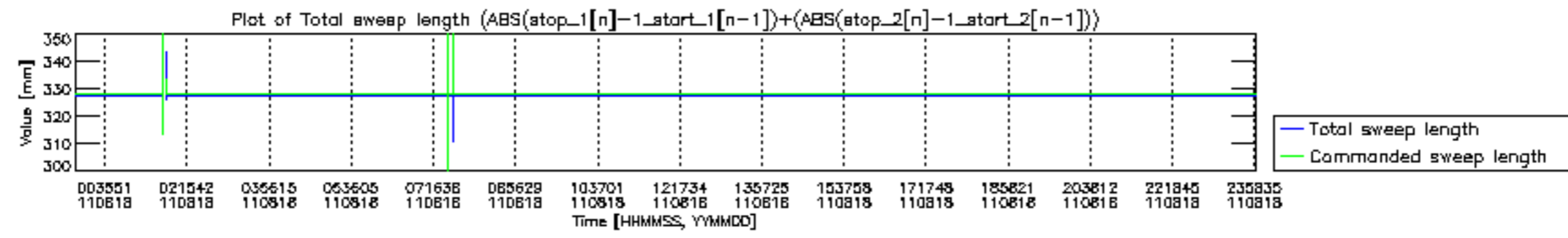


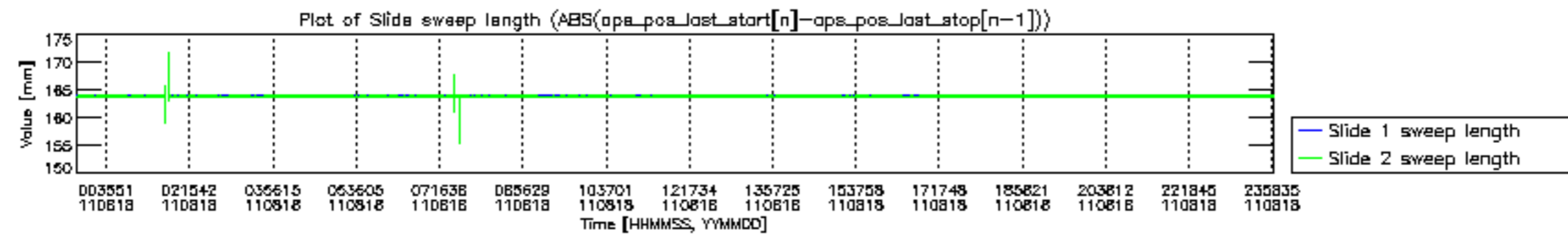


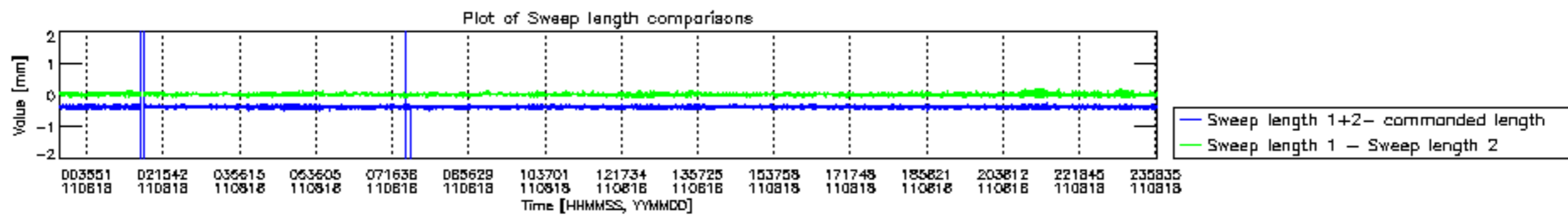


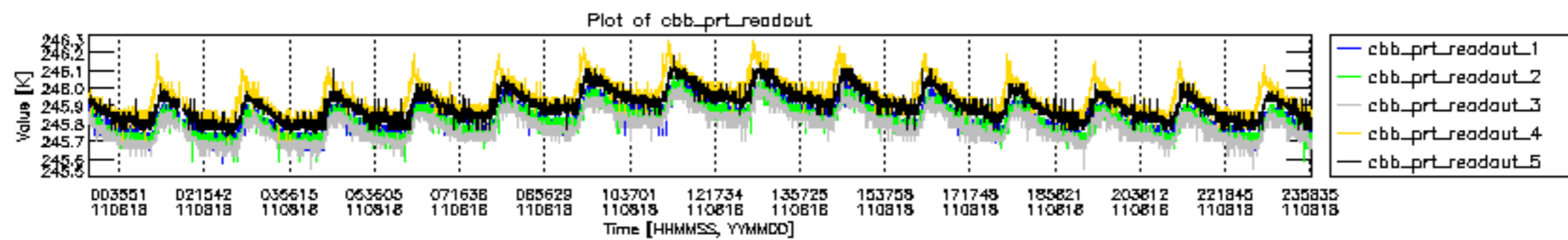


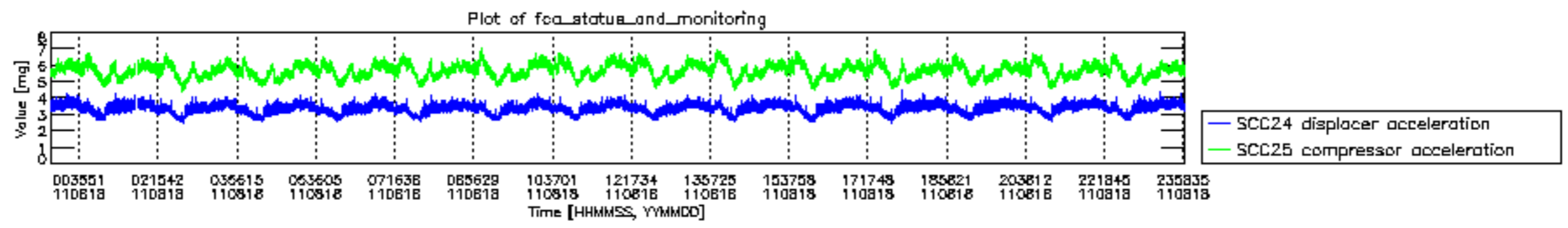












MIPNLOP_MIPSOUPAC_aux_fields_igm_cal, channel statistics plot
 Colour indicates value.

