

0. MIPAS Daily Report for level 0 products

0.1 General Info

0.2 Instrument Operational Performance Parameters

0.3 ADF monitoring

0.1 General Info

This report contains a daily analysis on parameters extracted from MIPAS level 0 data (The MIP_NL__0P product).

0.1.1 Report summary

The table below shows general characteristics of the data that are included into this report.

Item	Value
Report version	v1.6 08-11-2010
Time of report generation	22AUG2011 05:23:19
Data source version	KSPT_L0/4504-N
Processing scope for products	17AUG2011 00:00:00 to 18AUG2011 00:00:00
Start time of first product within scope	17AUG2011 00:28:59
Stop time of last product within scope	18AUG2011 01:31:27
Total number of level 0 products	16
Number of level 0 products with errors	0

0.1.2 Product Quality Indicators per product

The following table shows a summary for each product used in this report.

#	Product name	Start time	Stop time	Prod err	ISP err sign	ISP miss sign	ISP disc sign	rs sign
0	MIP_NL__OPNPDE20110817_002859_000058773105_00332_49484_9455.N1	17AUG2011 00:28:59	17AUG2011 02:06:57	0	0	0	0	0
1	MIP_NL__OPNPDE20110817_020600_000044933105_00333_49485_9456.N1	17AUG2011 02:06:00	17AUG2011 03:20:54	0	0	0	0	0
2	MIP_NL__OPNPDE20110817_032022_000061023105_00334_49486_9457.N1	17AUG2011 03:20:22	17AUG2011 05:02:04	0	0	0	0	0
3	MIP_NL__OPNPDE20110817_050131_000060873105_00335_49487_9458.N1	17AUG2011 05:01:31	17AUG2011 06:42:58	0	0	0	0	0
4	MIP_NL__OPNPDK20110817_064223_000040363105_00336_49488_6067.N1	17AUG2011 06:42:23	17AUG2011 07:49:39	0	0	0	0	0
5	MIP_NL__OPNPDK20110817_074905_000061423105_00337_49489_6068.N1	17AUG2011 07:49:05	17AUG2011 09:31:28	0	0	0	0	0
6	MIP_NL__OPNPDK20110817_093044_000060003105_00338_49490_6069.N1	17AUG2011 09:30:44	17AUG2011 11:10:44	0	0	0	0	0
7	MIP_NL__OPNPDK20110817_111002_000060003105_00339_49491_6070.N1	17AUG2011 11:10:02	17AUG2011 12:50:02	0	0	0	0	0
8	MIP_NL__OPNPDK20110817_124928_000058813105_00340_49492_6071.N1	17AUG2011 12:49:28	17AUG2011 14:27:29	0	0	0	0	0
9	MIP_NL__OPNPDK20110817_142645_000058433105_00341_49493_6072.N1	17AUG2011 14:26:45	17AUG2011 16:04:08	0	0	0	0	0
10	MIP_NL__OPNPDK20110817_160240_000059203105_00342_49494_6073.N1	17AUG2011 16:02:40	17AUG2011 17:41:21	0	0	0	0	0
11	MIP_NL__OPNPDK20110817_174022_000060503105_00343_49495_6074.N1	17AUG2011 17:40:22	17AUG2011 19:21:12	0	0	0	0	0
12	MIP_NL__OPNPDK20110817_192016_000060443105_00344_49496_6075.N1	17AUG2011 19:20:16	17AUG2011 21:00:59	0	0	0	0	0
13	MIP_NL__OPNPDE20110817_205927_000043563105_00345_49497_9459.N1	17AUG2011 20:59:27	17AUG2011 22:12:03	0	0	0	0	0
14	MIP_NL__OPNPDE20110817_221104_000061423105_00345_49497_9460.N1	17AUG2011 22:11:04	17AUG2011 23:53:26	0	0	0	0	0
15	MIP_NL__OPNPDE20110817_235223_000059433105_00346_49498_9461.N1	17AUG2011 23:52:23	18AUG2011 01:31:27	0	0	0	0	0

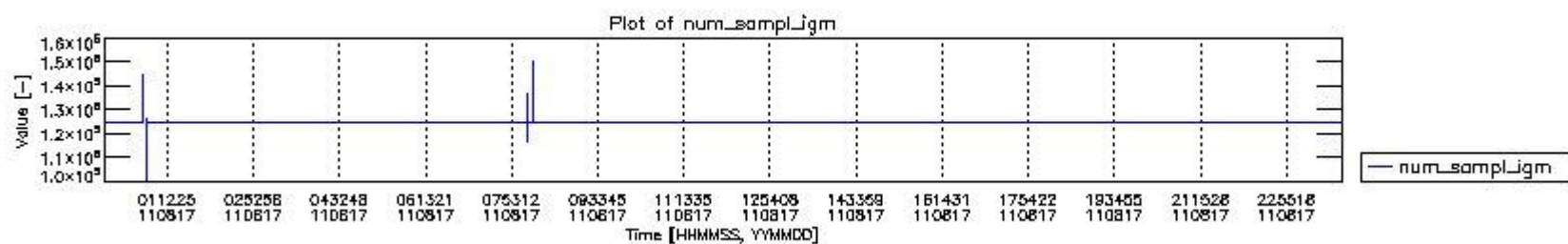
0.2 Instrument Operational Performance Parameters

The following plots give an overview of various instrument parameters for this day. The instrument parameters are part of the auxiliary data field within the source packets of the MIP_NL__0P product. The auxiliary data is normally included twice per interferogram. Note that only the first packet is currently included in monitoring.

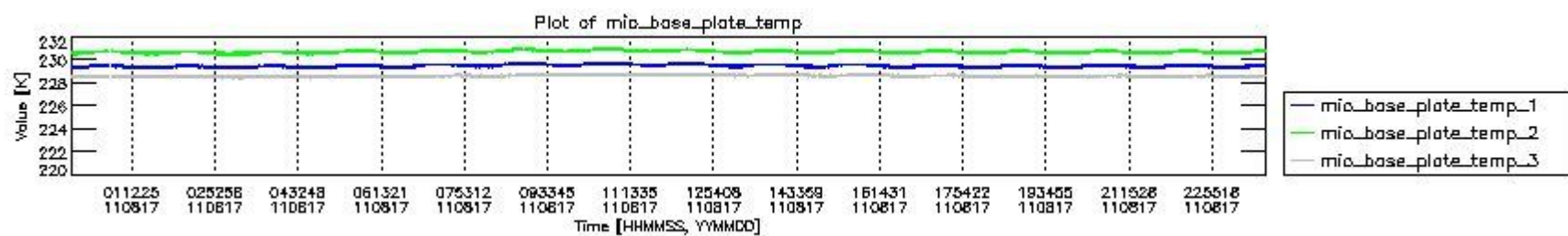
The following table shows the counts of various interferogram number of samples

Number of igm samples	Count [#]	Count [%]
100483	1	0.0024101612
116602	1	0.0024101612

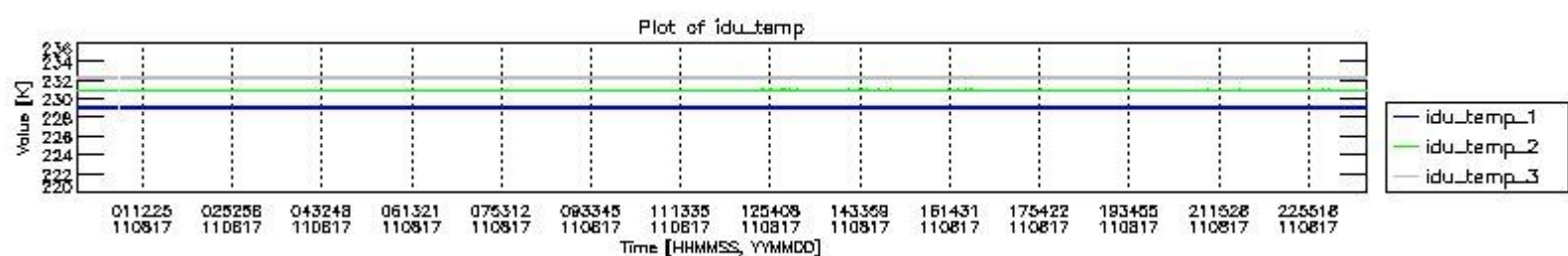
124483	1	0.0024101612
124800	38703	93.280470
124803	2776	6.6906076
125735	1	0.0024101612
126670	1	0.0024101612
127605	1	0.0024101612
128536	1	0.0024101612
136734	1	0.0024101612
144298	1	0.0024101612
144615	1	0.0024101612
147737	1	0.0024101612
150542	1	0.0024101612



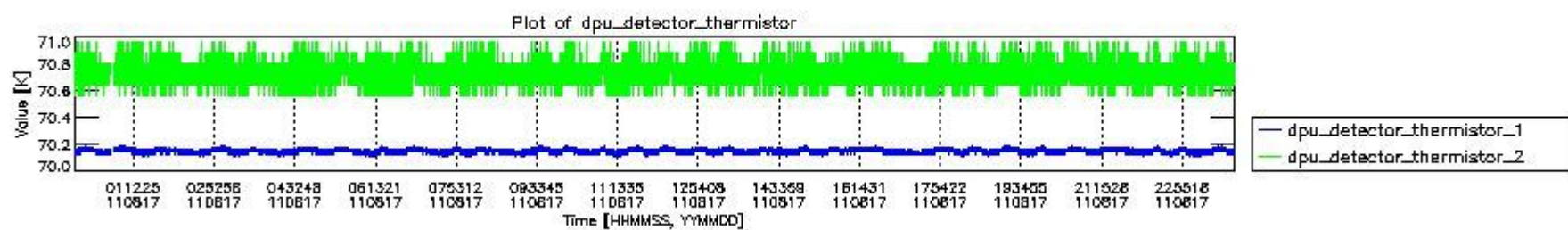
mipas_daily_report_level0_KSPT_L0_4504_N_20110817_0.PNG



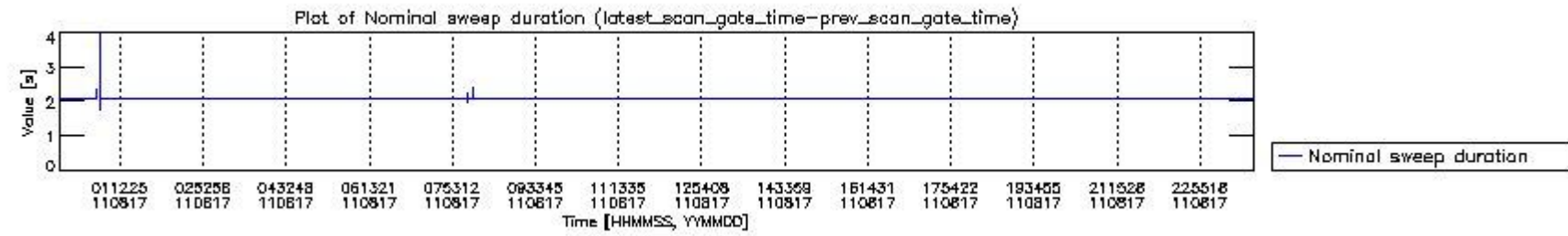
mipas_daily_report_level0_KSPT_L0_4504_N_20110817_1.PNG



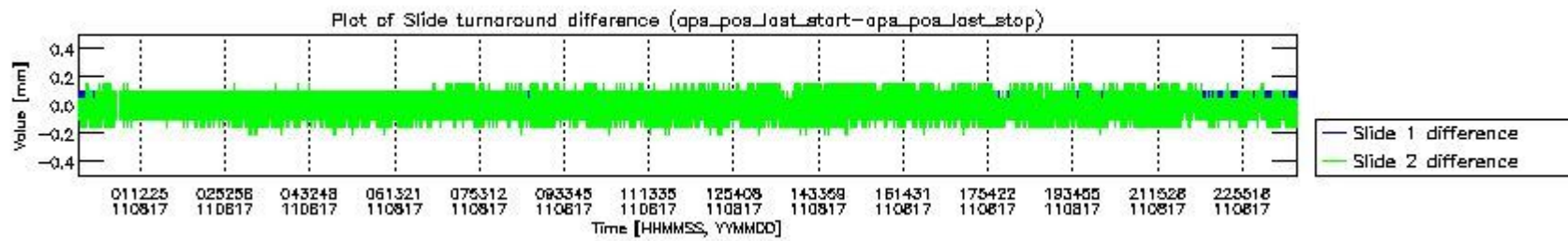
mipas_daily_report_level0_KSPT_L0_4504_N_20110817_2.PNG



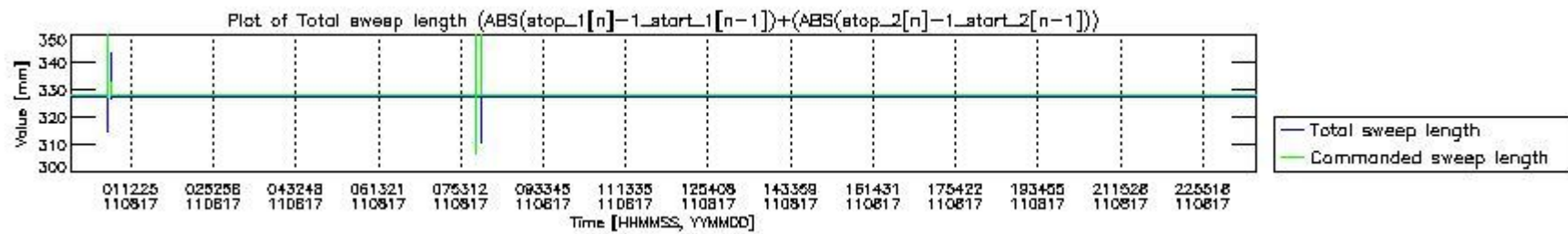
mipas_daily_report_level0_KSPT_L0_4504_N_20110817_3.PNG



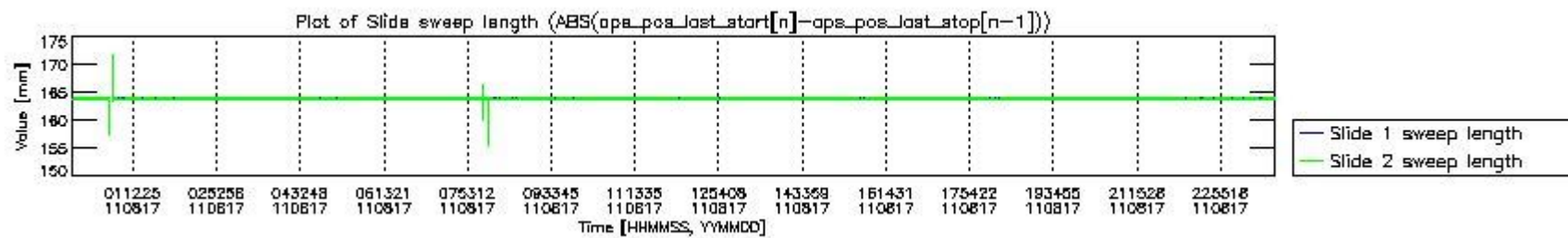
mipas_daily_report_level0_KSPT_L0_4504_N_20110817_4.PNG



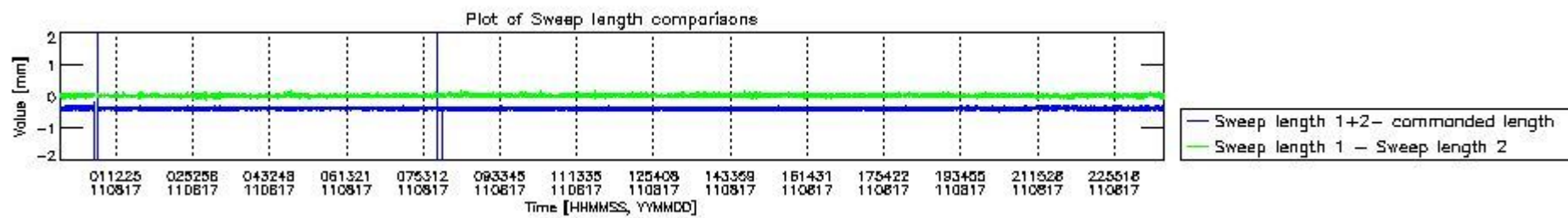
mipas_daily_report_level0_KSPT_L0_4504_N_20110817_5.PNG



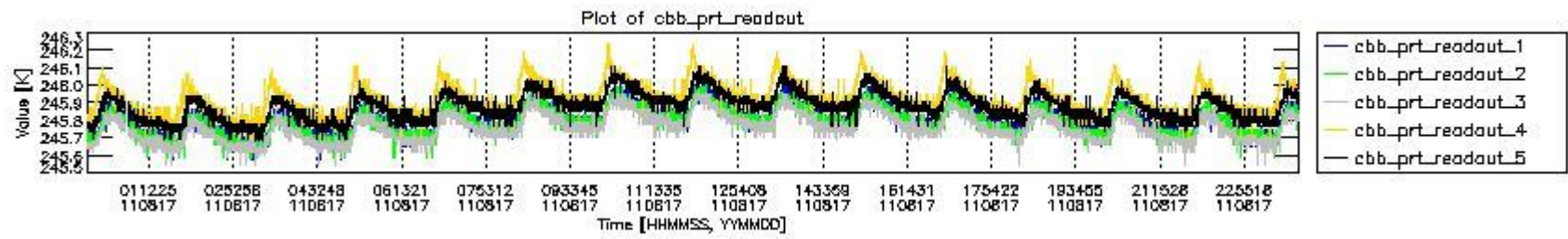
mipas_daily_report_level0_KSPT_L0_4504_N_20110817_6.PNG



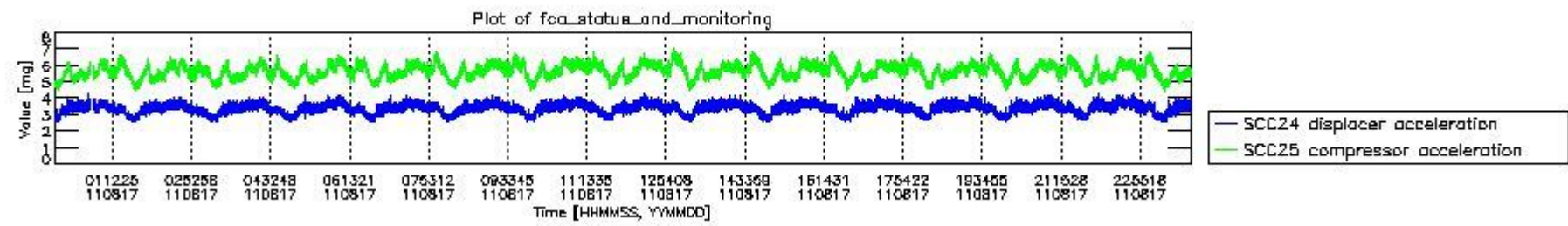
mipas_daily_report_level0_KSPT_L0_4504_N_20110817_7.PNG



mipas_daily_report_level0_KSPT_L0_4504_N_20110817_8.PNG



mipas_daily_report_level0_KSPT_L0_4504_N_20110817_9.PNG

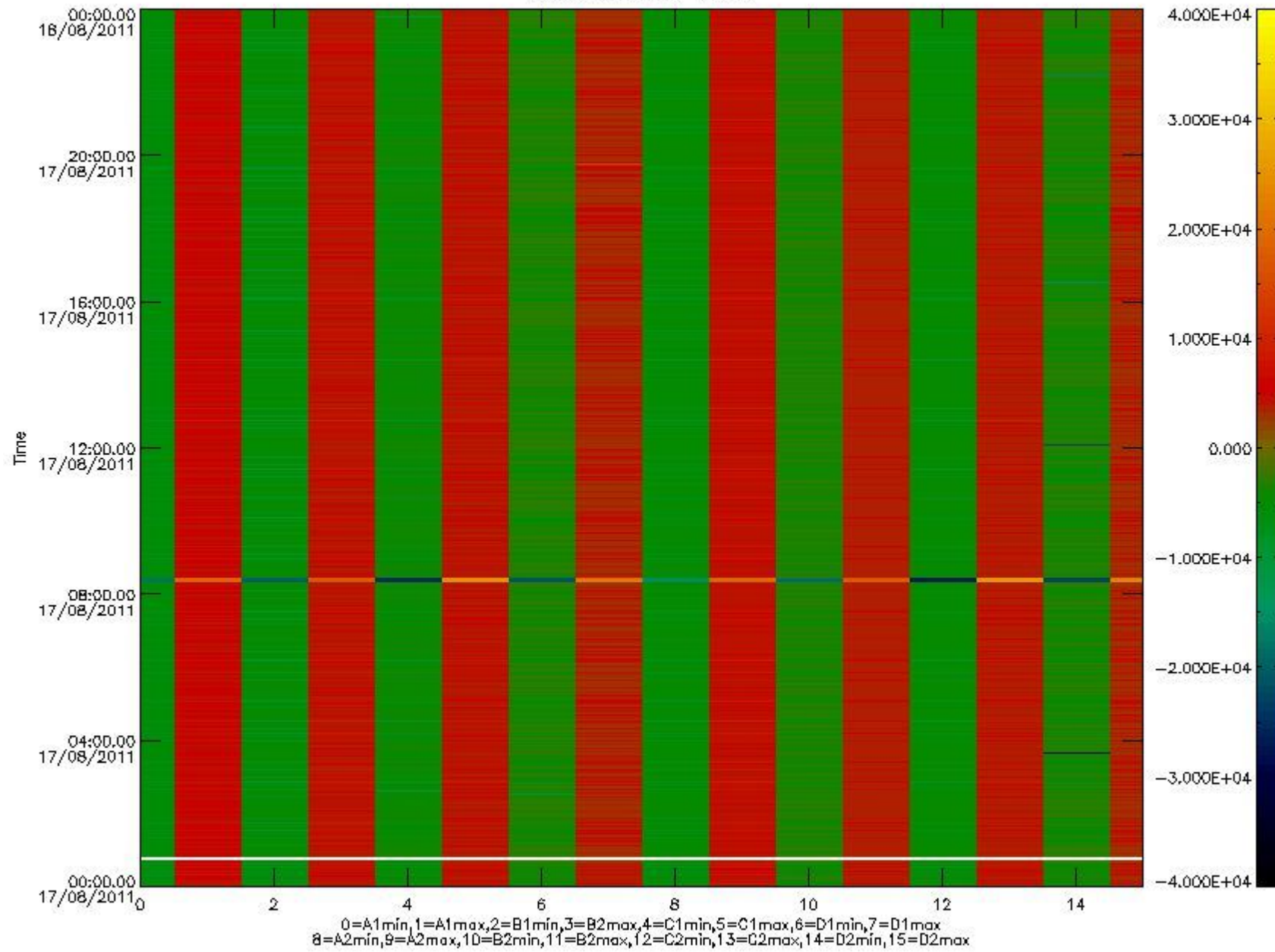


mipas_daily_report_level0_KSPT_L0_4504_N_20110817_10.PNG

The following table shows channel statistics for all channels for this day.

Channel	Min	Max	ADC
A1	-20379	22193	16bit
B1	-20689	17803	16bit
C1	-25901	25842	16bit
D1	-32768	32767	16bit
A2	-17238	21566	16bit
B2	-18937	18604	16bit
C2	-26910	26582	16bit
D2	-32768	32767	16bit

MIPNLOP_MIPSOUPAC_aux_fields_igm_cal, channel statistics plot
 Colour indicates value.



mipas_daily_report_level0_KSPT_L0_4504_N_20110817_11.PNG

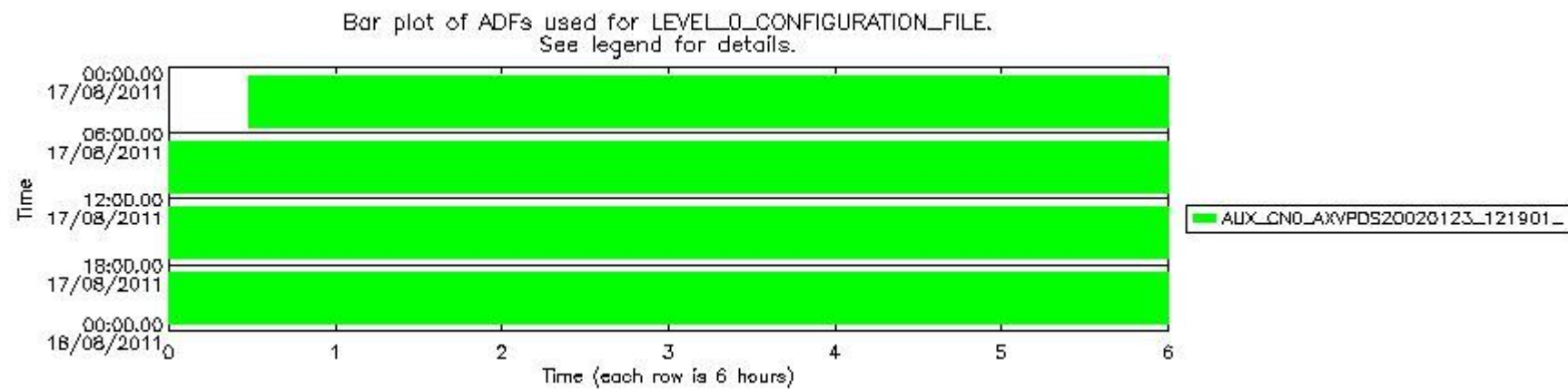
0.3 ADF monitoring

The use of ADFs is shown in two ways:

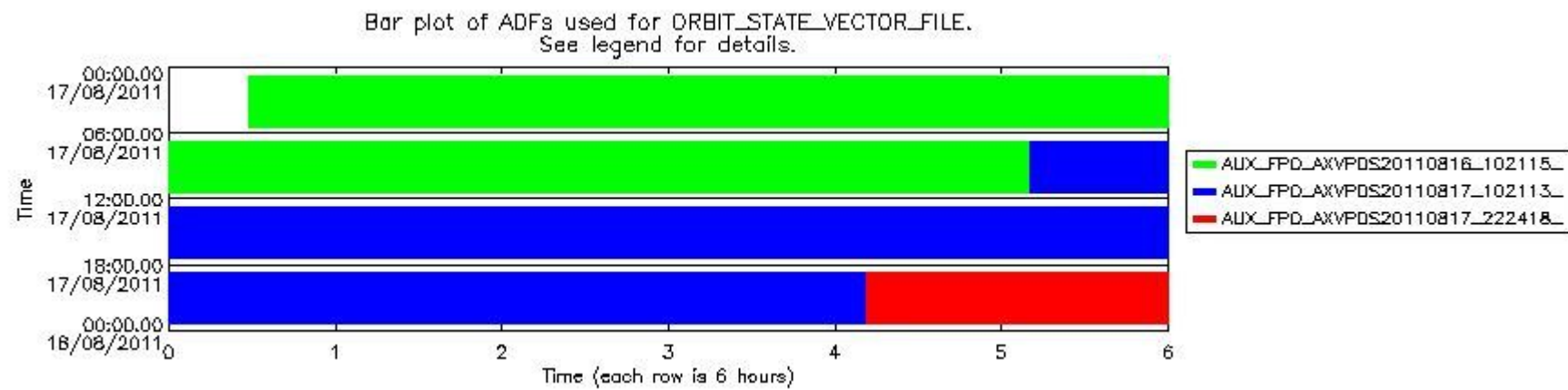
1. By means of two tables that can be used to find the ADF used for a specific product.
2. By means of plots that show changes in ADF using colours.

Number	ADF
0	AUX_CN0_AXVPDS20020123_121901_20020101_000000_20200101_000000
1	AUX_FPO_AXVPDS20110816_102115_20110815_183610_20110825_204957
2	AUX_FPO_AXVPDS20110817_102113_20110816_193940_20110826_201312
3	AUX_FPO_AXVPDS20110817_222418_20110817_104145_20110827_125532

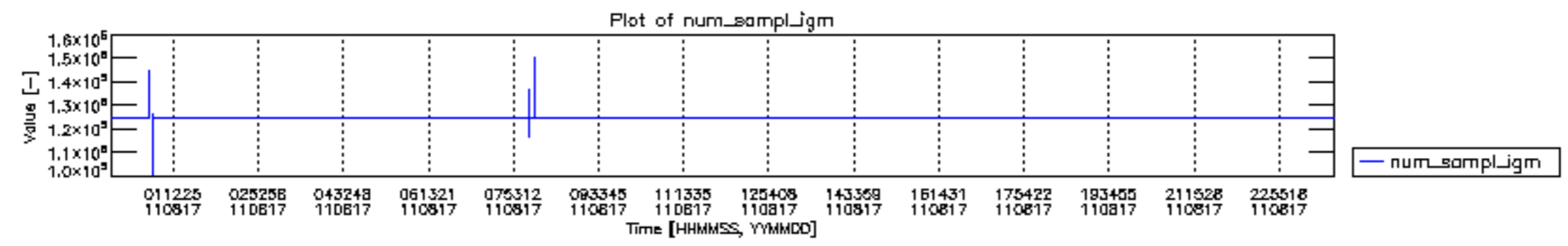
Number	Product name	#CNO	#FPO
0	MIP_NL__0PNPDE20110817_002859_000058773105_00332_49484_9455.N1	0	1
1	MIP_NL__0PNPDE20110817_020600_000044933105_00333_49485_9456.N1	0	1
2	MIP_NL__0PNPDE20110817_032022_000061023105_00334_49486_9457.N1	0	1
3	MIP_NL__0PNPDE20110817_050131_000060873105_00335_49487_9458.N1	0	1
4	MIP_NL__0PNPDK20110817_064223_000040363105_00336_49488_6067.N1	0	1
5	MIP_NL__0PNPDK20110817_074905_000061423105_00337_49489_6068.N1	0	1
6	MIP_NL__0PNPDK20110817_093044_000060003105_00338_49490_6069.N1	0	1
7	MIP_NL__0PNPDK20110817_111002_000060003105_00339_49491_6070.N1	0	2
8	MIP_NL__0PNPDK20110817_124928_000058813105_00340_49492_6071.N1	0	2
9	MIP_NL__0PNPDK20110817_142645_000058433105_00341_49493_6072.N1	0	2
10	MIP_NL__0PNPDK20110817_160240_000059203105_00342_49494_6073.N1	0	2
11	MIP_NL__0PNPDK20110817_174022_000060503105_00343_49495_6074.N1	0	2
12	MIP_NL__0PNPDK20110817_192016_000060443105_00344_49496_6075.N1	0	2
13	MIP_NL__0PNPDE20110817_205927_000043563105_00345_49497_9459.N1	0	2
14	MIP_NL__0PNPDE20110817_221104_000061423105_00345_49497_9460.N1	0	3
15	MIP_NL__0PNPDE20110817_235223_000059433105_00346_49498_9461.N1	0	3

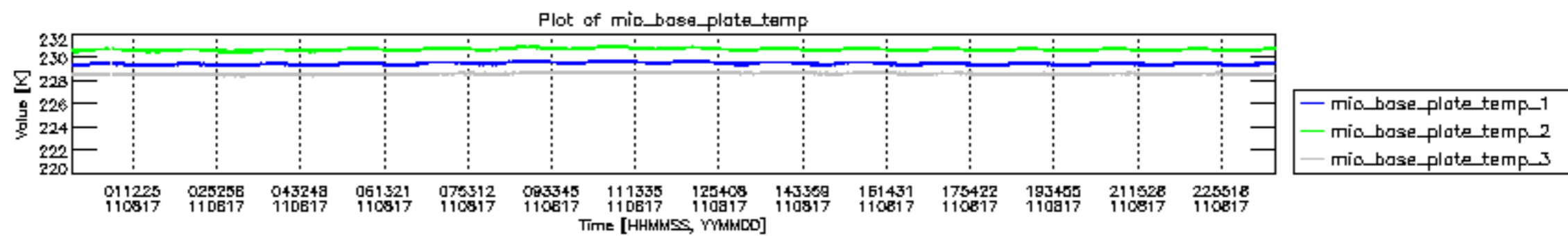


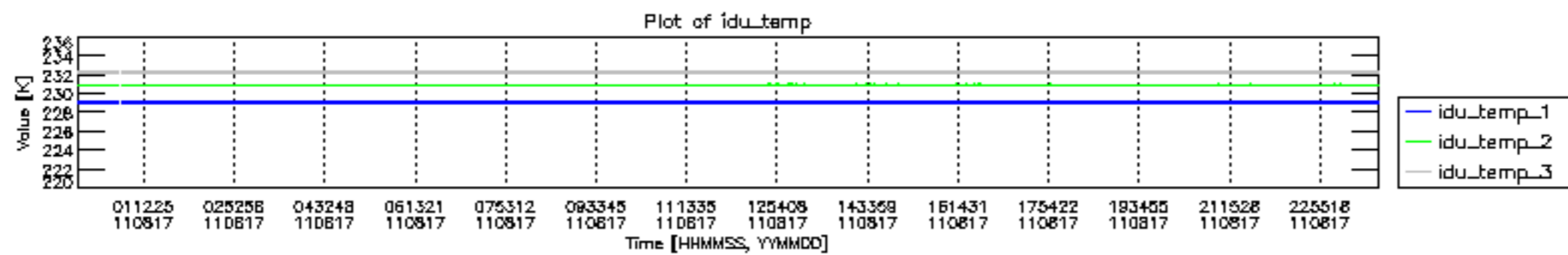
mipas_daily_report_level0_KSPT_L0_4504_N_20110817_12.PNG

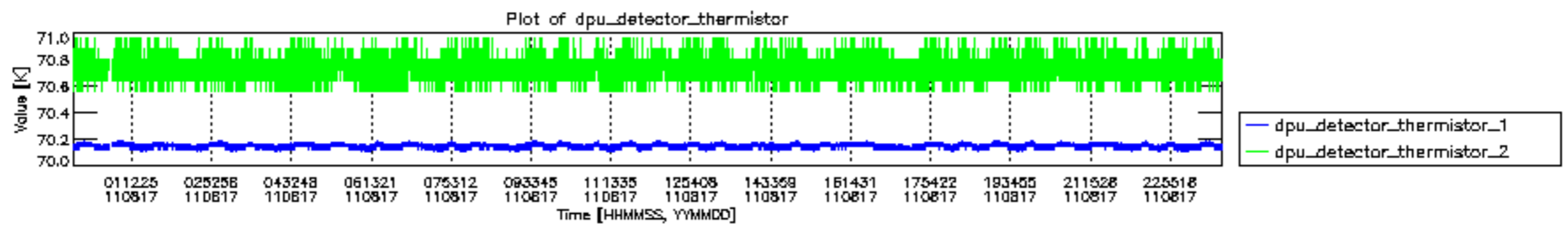


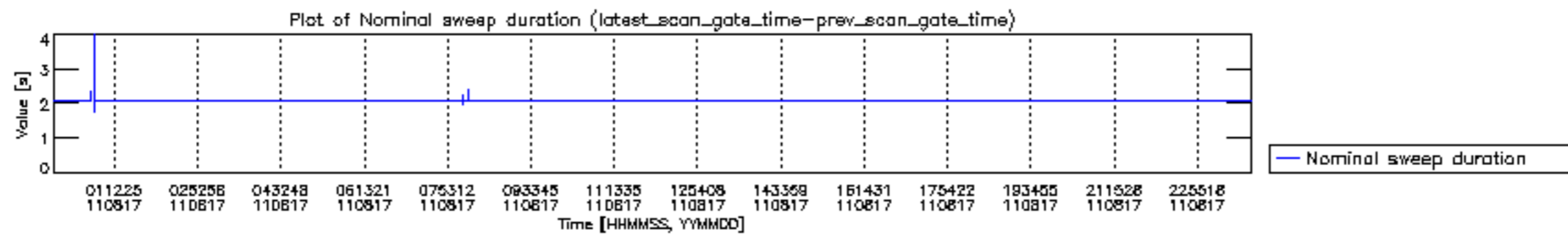
mipas_daily_report_level0_KSPT_L0_4504_N_20110817_13.PNG

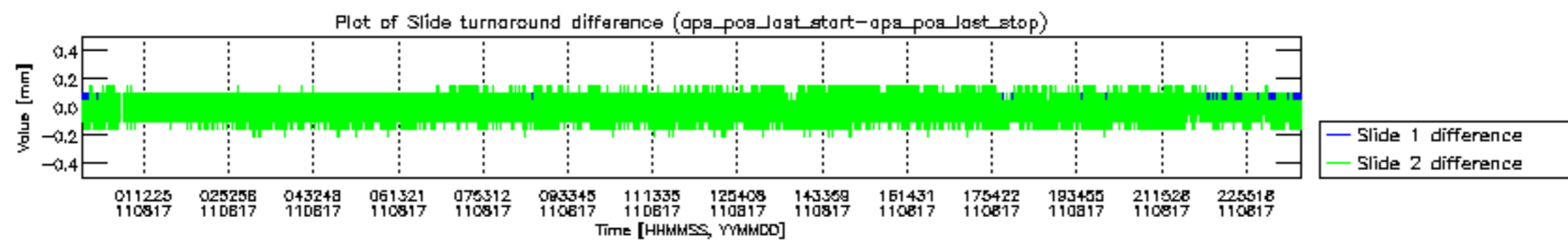


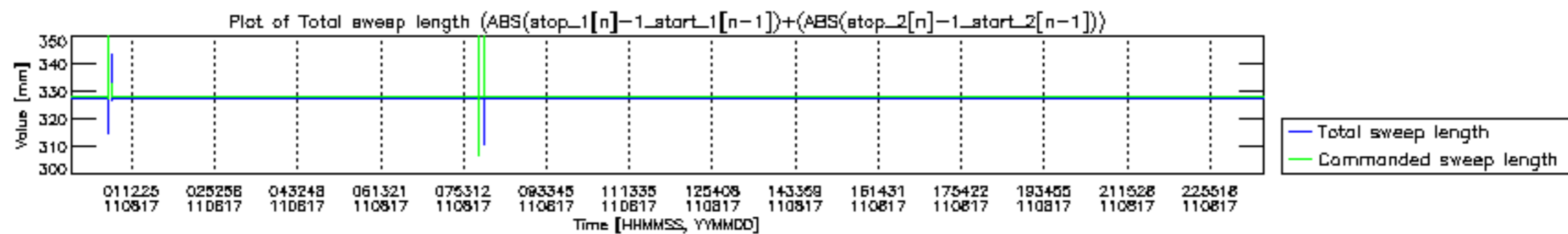


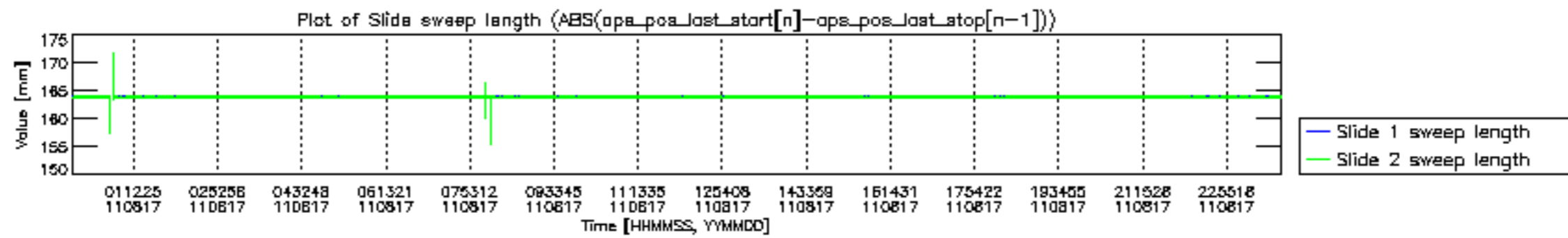


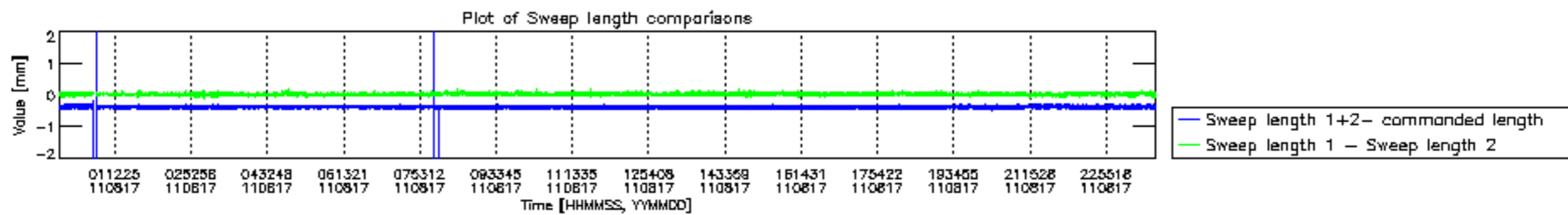


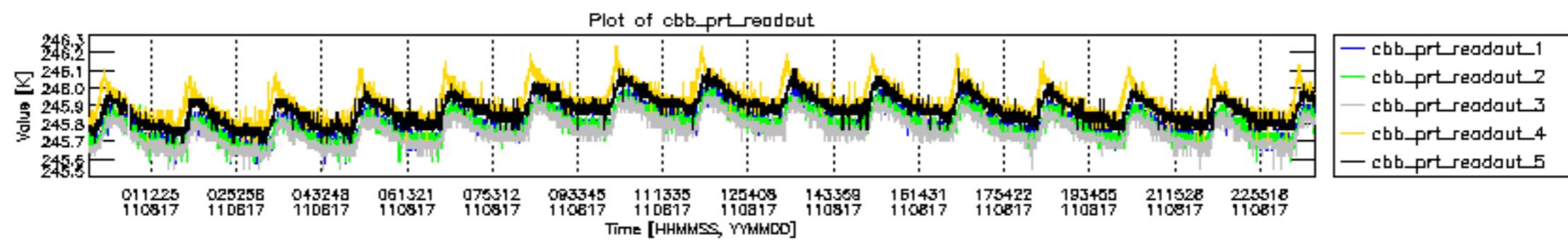


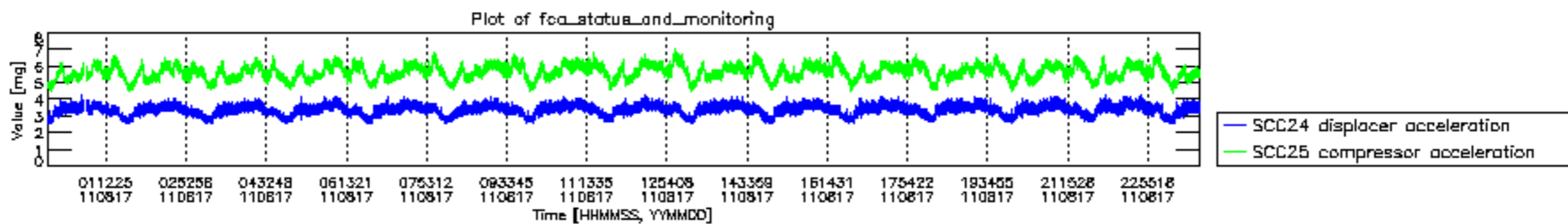












MIPNLOP_MIPSOUPAC_aux_fields_igm_cal, channel statistics plot
 Colour indicates value.

