

0. MIPAS Daily Report for level 0 products

[0.1 General Info](#)

[0.2 Instrument Operational Performance Parameters](#)

[0.3 ADF monitoring](#)

0.1 General Info

This report contains a daily analysis on parameters extracted from MIPAS level 0 data (The MIP_NL__0P product).

0.1.1 Report summary

The table below shows general characteristics of the data that are included into this report.

Item	Value
Report version	v1.6 08-11-2010
Time of report generation	13AUG2011 05:24:32
Data source version	KSPT_L0/4504-N
Processing scope for products	08AUG2011 00:00:00 to 09AUG2011 00:00:00
Start time of first product within scope	08AUG2011 00:58:29
Stop time of last product within scope	09AUG2011 00:22:24
Total number of level 0 products	17
Number of level 0 products with errors	3

0.1.2 Product Quality Indicators per product

The following table shows a summary for each product used in this report.

#	Product name	Start time	Stop time	Prod err	ISP err sign	ISP miss sign	ISP disc sign	rs sign
0	MIP_NL__0PNPDE20110808_005829_000102353105_00203_49355_9395.N1	08AUG2011 00:58:29	08AUG2011 03:49:05	0	0	0	0	0
1	MIP_NL__0PNPDE20110808_034831_000062363105_00205_49357_9396.N1	08AUG2011 03:48:31	08AUG2011 05:32:27	0	0	0	0	0
2	MIP_NL__0PNPDE20110808_053154_000060233105_00206_49358_9397.N1	08AUG2011 05:31:54	08AUG2011 07:12:16	0	0	0	0	0
3	MIP_NL__0PNPDK20110808_071132_000040653105_00207_49359_5988.N1	08AUG2011 07:11:32	08AUG2011 08:19:18	0	0	0	0	0
4	MIP_NL__0PNPDK20110808_095945_000000023105_00209_49361_5990.N1	08AUG2011 09:59:45	08AUG2011 09:59:47	1	1	0	0	0
5	MIP_NL__0PNPDK20110808_095947_000000023105_00209_49361_5991.N1	08AUG2011 09:59:47	08AUG2011 09:59:49	1	1	0	0	0
6	MIP_NL__0PNPDK20110808_095949_000000023105_00209_49361_5992.N1	08AUG2011 09:59:49	08AUG2011 09:59:51	1	1	0	0	0
7	MIP_NL__0PNPDK20110808_095951_000000633105_00209_49361_5994.N1	08AUG2011 09:59:51	08AUG2011 10:00:54	0	0	0	0	0
8	MIP_NL__0PNPDK20110808_100010_000059433105_00209_49361_5995.N1	08AUG2011 10:00:10	08AUG2011 11:39:13	0	0	0	0	0
9	MIP_NL__0PNPDK20110808_113829_000060003105_00210_49362_5996.N1	08AUG2011 11:38:29	08AUG2011 13:18:29	0	0	0	0	0
10	MIP_NL__0PNPDK20110808_131755_000059293105_00211_49363_5997.N1	08AUG2011 13:17:55	08AUG2011 14:56:44	0	0	0	0	0
11	MIP_NL__0PNPDK20110808_145600_000058393105_00212_49364_5998.N1	08AUG2011 14:56:00	08AUG2011 16:33:19	0	0	0	0	0
12	MIP_NL__0PNPDK20110808_163206_000059663105_00213_49365_5999.N1	08AUG2011 16:32:06	08AUG2011 18:11:32	0	0	0	0	0
13	MIP_NL__0PNPDK20110808_181034_000059773105_00214_49366_6000.N1	08AUG2011 18:10:34	08AUG2011 19:50:10	0	0	0	0	0
14	MIP_NL__0PNPDE20110808_194838_000041133105_00215_49367_9398.N1	08AUG2011 19:48:38	08AUG2011 20:57:12	0	0	0	0	0
15	MIP_NL__0PNPDE20110808_205540_000063553105_00215_49367_9399.N1	08AUG2011 20:55:40	08AUG2011 22:41:35	0	0	0	0	0
16	MIP_NL__0PNPDE20110808_223952_000061523105_00216_49368_9400.N1	08AUG2011 22:39:52	09AUG2011 00:22:24	0	0	0	0	0

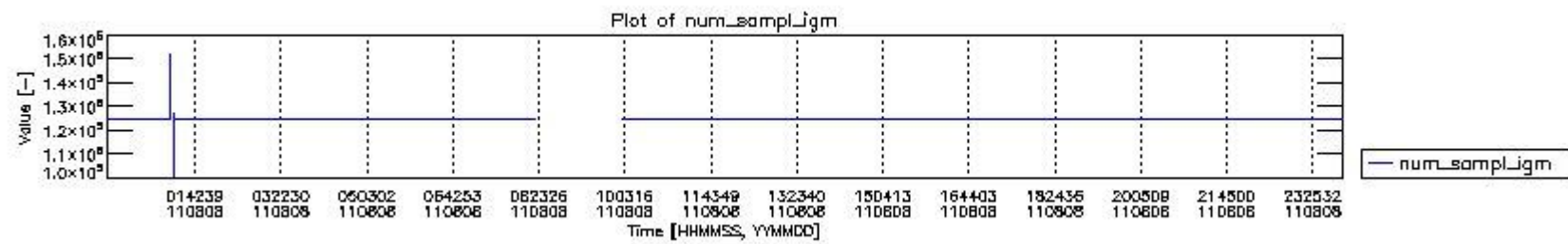
0.2 Instrument Operational Performance Parameters

The following plots give an overview of various instrument parameters for this day. The instrument parameters are part of the auxiliary data field within the source packets of the MIP_NL__0P product. The auxiliary data is normally included twice per interferogram. Note that only the first packet is currently included in monitoring.

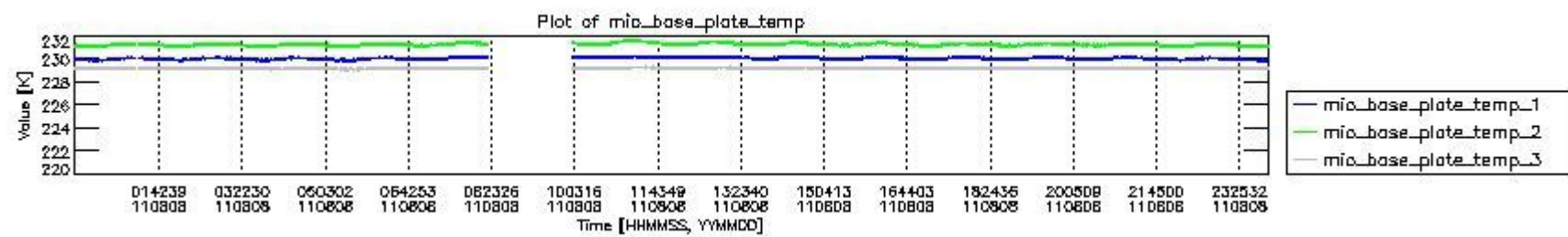
The following table shows the counts of various interferogram number of samples

Number of igm samples	Count [#]	Count [%]
100706	1	0.0025890638

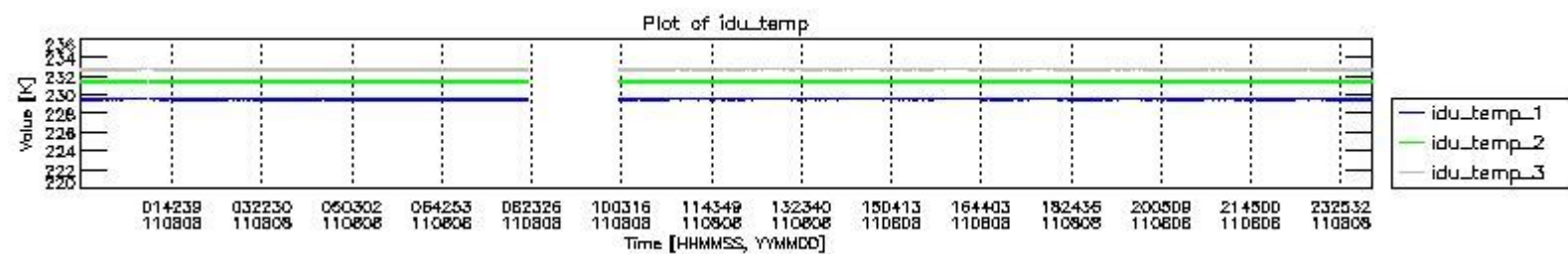
124800	35860	92.843828
124803	2758	7.1406379
125958	1	0.0025890638
127116	1	0.0025890638
128423	1	0.0025890638
148555	1	0.0025890638
152178	1	0.0025890638



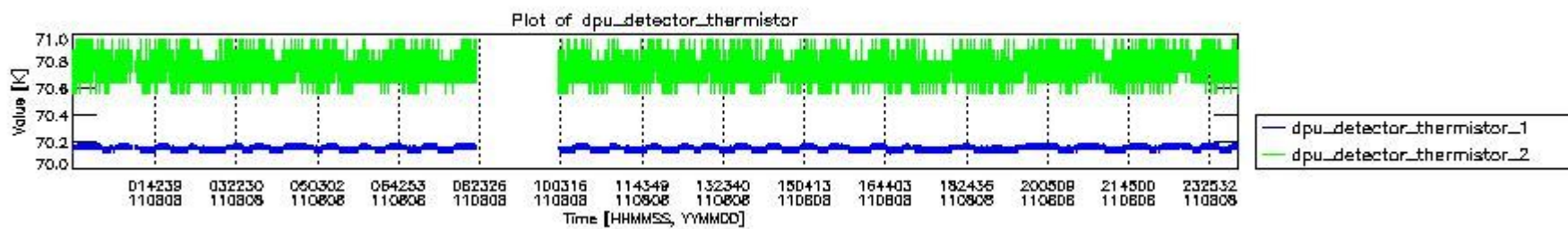
mipas_daily_report_level0_KSPT_L0_4504_N_20110808_0.PNG



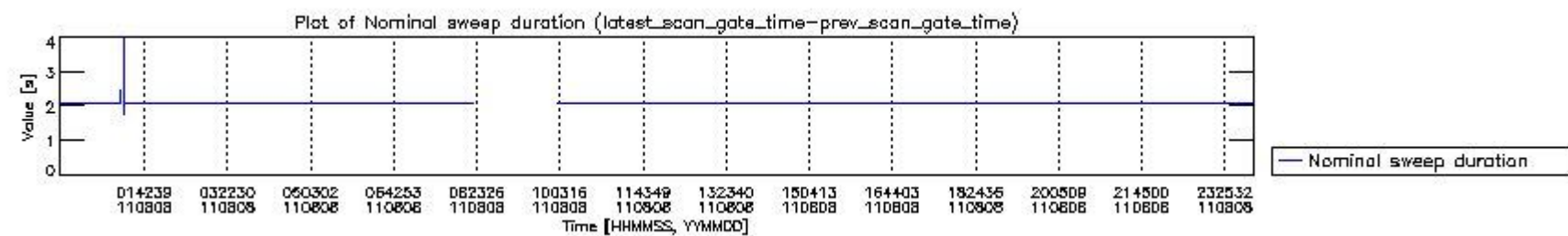
mipas_daily_report_level0_KSPT_L0_4504_N_20110808_1.PNG



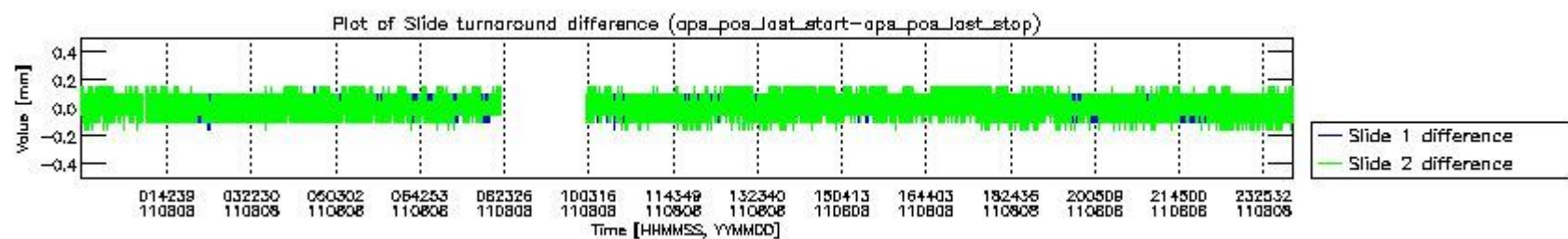
mipas_daily_report_level0_KSPT_L0_4504_N_20110808_2.PNG



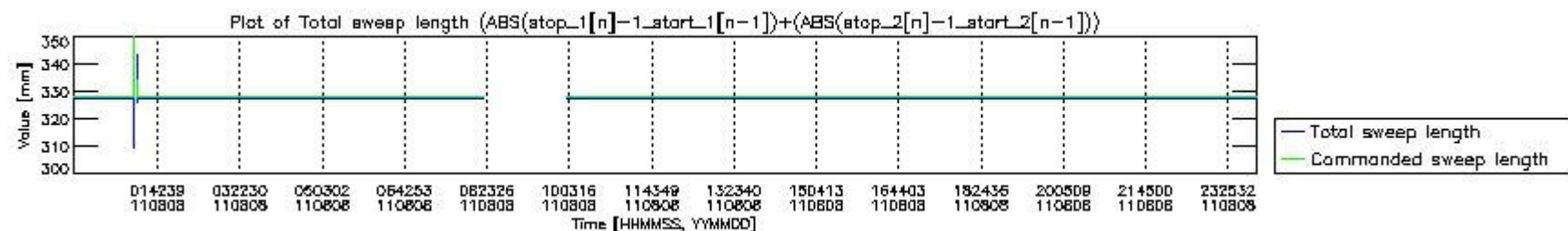
mipas_daily_report_level0_KSPT_L0_4504_N_20110808_3.PNG



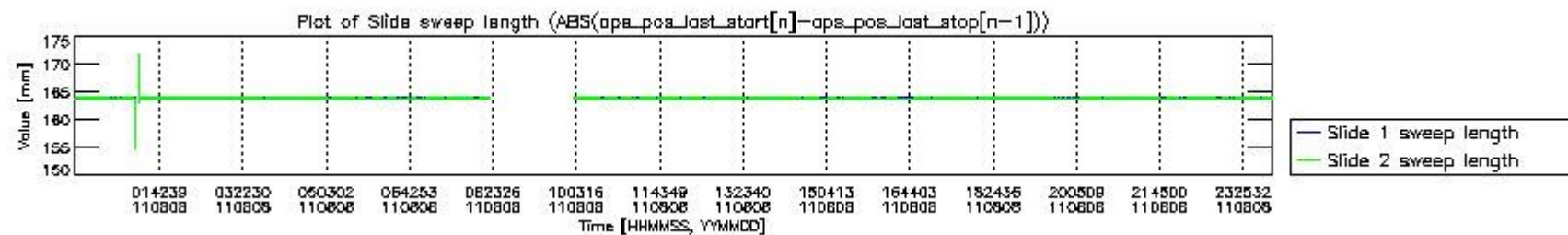
mipas_daily_report_level0_KSPT_L0_4504_N_20110808_4.PNG



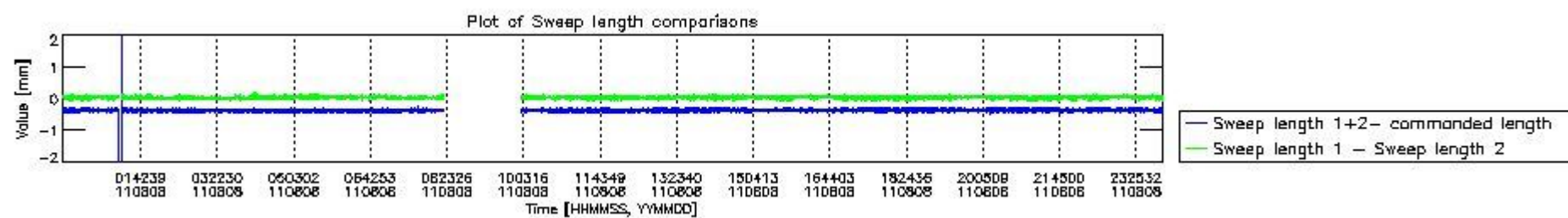
mipas_daily_report_level0_KSPT_L0_4504_N_20110808_5.PNG



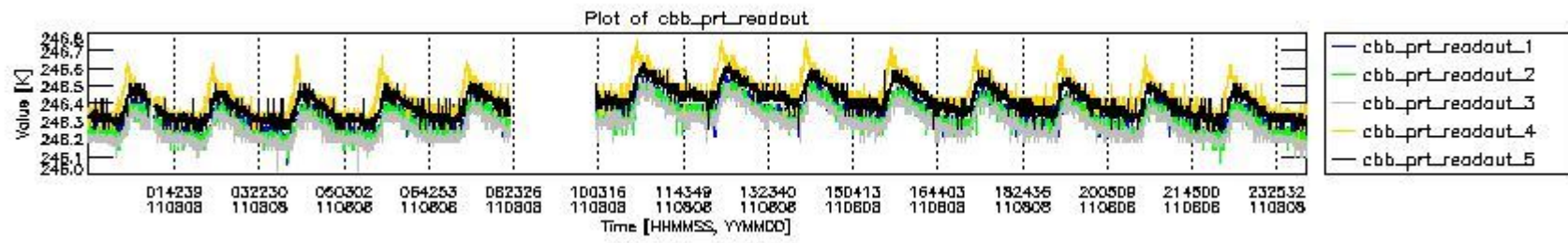
mipas_daily_report_level0_KSPT_L0_4504_N_20110808_6.PNG



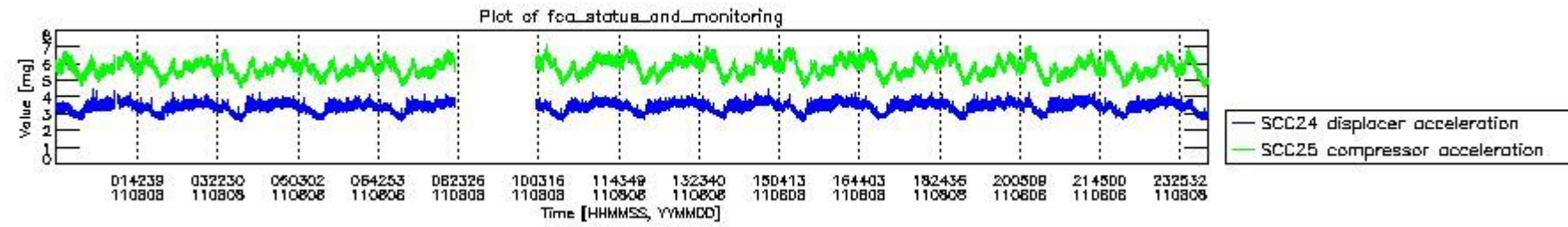
mipas_daily_report_level0_KSPT_L0_4504_N_20110808_7.PNG



mipas_daily_report_level0_KSPT_L0_4504_N_20110808_8.PNG



mipas_daily_report_level0_KSPT_L0_4504_N_20110808_9.PNG

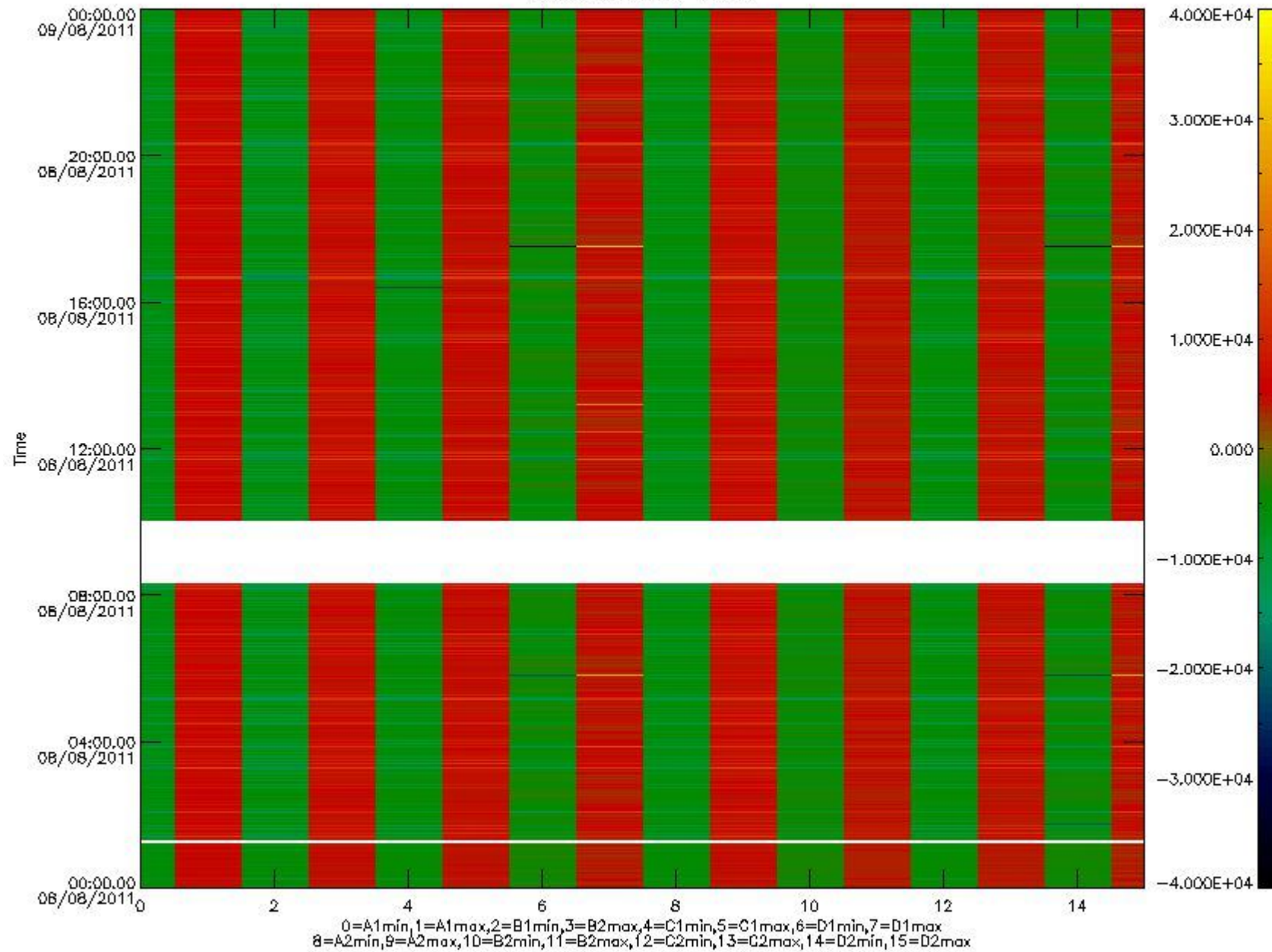


mipas_daily_report_level0_KSPT_L0_4504_N_20110808_10.PNG

The following table shows channel statistics for all channels for this day.

Channel	Min	Max	ADC
A1	-18793	19878	16bit
B1	-18820	16067	16bit
C1	-23994	20317	16bit
D1	-32768	32767	16bit
A2	-15819	19501	16bit
B2	-15483	15228	16bit
C2	-20861	24355	16bit
D2	-32768	32767	16bit

MIPNLOP_MIPSOUPAC_aux_fields_igm_cal, channel statistics plot
Colour indicates value.



mipas_daily_report_level0_KSPT_L0_4504_N_20110808_11.PNG

0.3 ADF monitoring

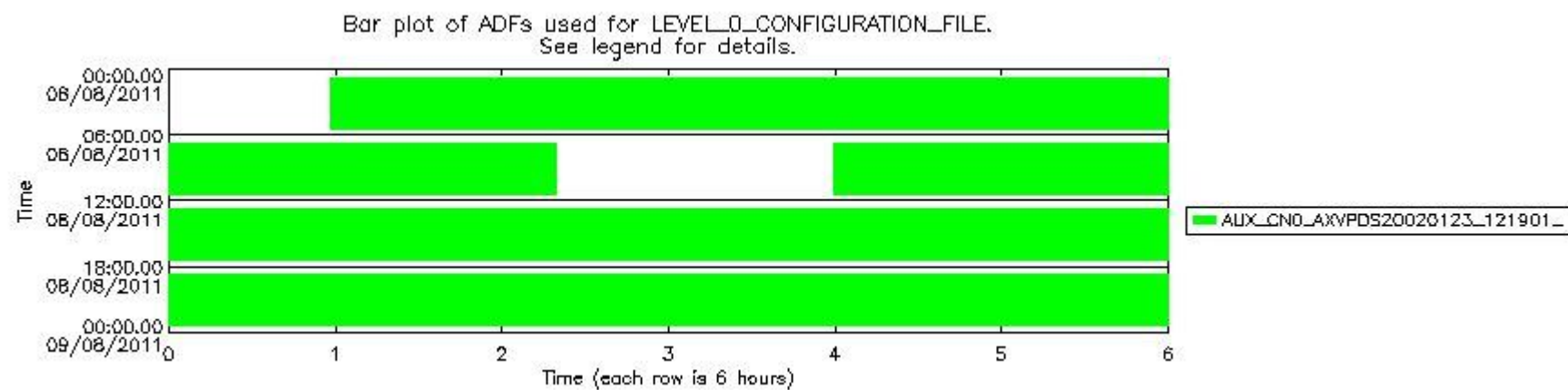
The use of ADFs is shown in two ways:

1. By means of two tables that can be used to find the ADF used for a specific product.
2. By means of plots that show changes in ADF using colours.

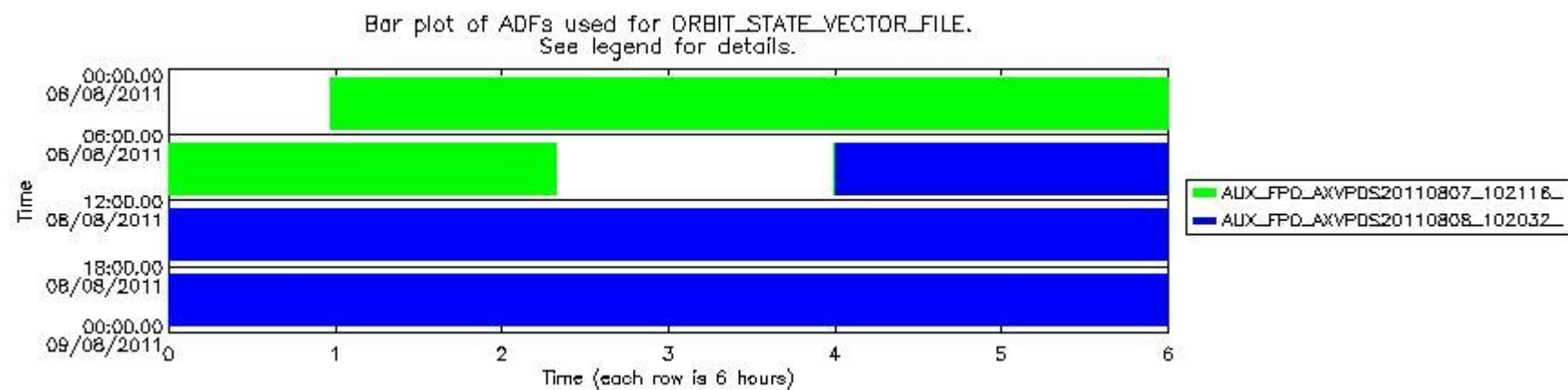
Number	ADF
0	AUX_CN0_AXVPDS20020123_121901_20020101_000000_20200101_000000
1	AUX_FPO_AXVPDS20110807_102116_20110806_190607_20110816_211954
2	AUX_FPO_AXVPDS20110808_102032_20110807_182923_20110817_204309

Number	Product name	#CN0	#FPO
--------	--------------	------	------

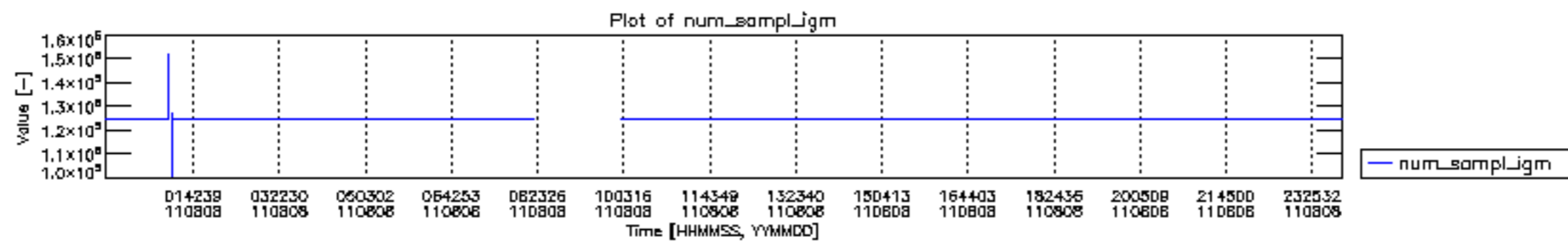
0	MIP_NL__0PNPDE20110808_005829_000102353105_00203_49355_9395.N1	0	1
1	MIP_NL__0PNPDE20110808_034831_000062363105_00205_49357_9396.N1	0	1
2	MIP_NL__0PNPDE20110808_053154_000060233105_00206_49358_9397.N1	0	1
3	MIP_NL__0PNPDK20110808_071132_000040653105_00207_49359_5988.N1	0	1
4	MIP_NL__0PNPDK20110808_095945_000000023105_00209_49361_5990.N1	0	1
5	MIP_NL__0PNPDK20110808_095947_000000023105_00209_49361_5991.N1	0	1
6	MIP_NL__0PNPDK20110808_095949_000000023105_00209_49361_5992.N1	0	1
7	MIP_NL__0PNPDK20110808_095951_000000633105_00209_49361_5994.N1	0	1
8	MIP_NL__0PNPDK20110808_100010_000059433105_00209_49361_5995.N1	0	2
9	MIP_NL__0PNPDK20110808_113829_000060003105_00210_49362_5996.N1	0	2
10	MIP_NL__0PNPDK20110808_131755_000059293105_00211_49363_5997.N1	0	2
11	MIP_NL__0PNPDK20110808_145600_000058393105_00212_49364_5998.N1	0	2
12	MIP_NL__0PNPDK20110808_163206_000059663105_00213_49365_5999.N1	0	2
13	MIP_NL__0PNPDK20110808_181034_000059773105_00214_49366_6000.N1	0	2
14	MIP_NL__0PNPDE20110808_194838_000041133105_00215_49367_9398.N1	0	2
15	MIP_NL__0PNPDE20110808_205540_000063553105_00215_49367_9399.N1	0	2
16	MIP_NL__0PNPDE20110808_223952_000061523105_00216_49368_9400.N1	0	2

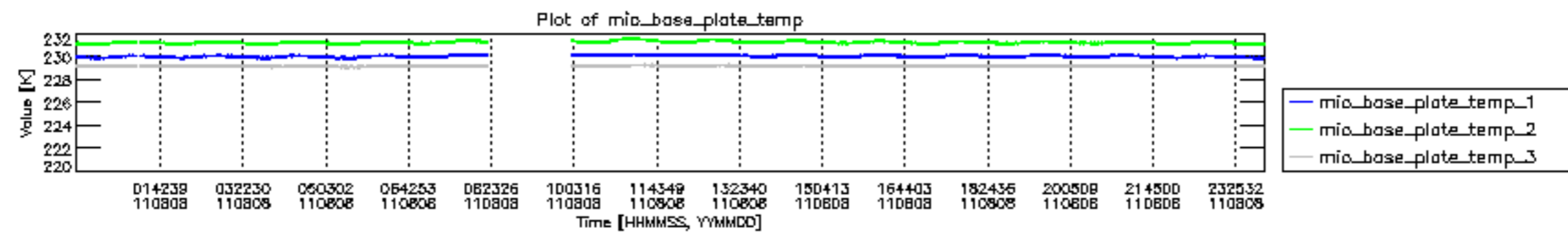


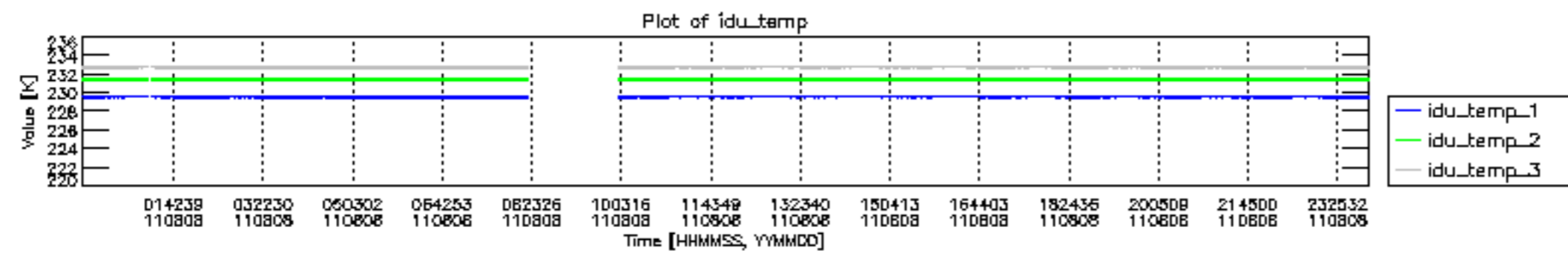
mipas_daily_report_level0_KSPT_L0_4504_N_20110808_12.PNG

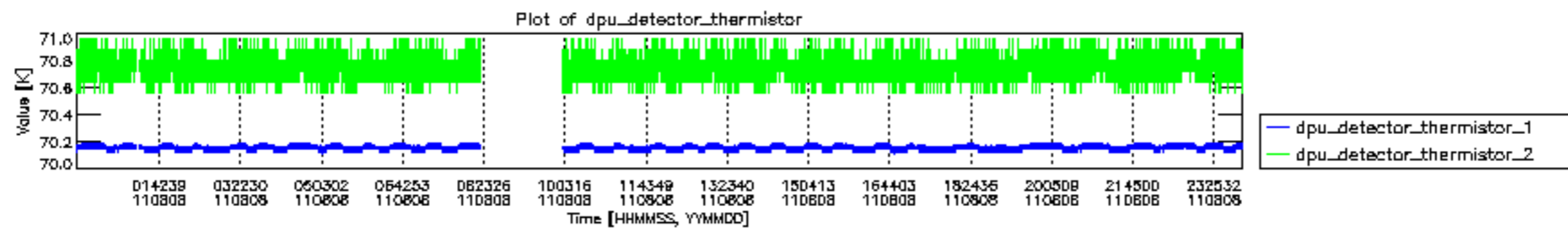


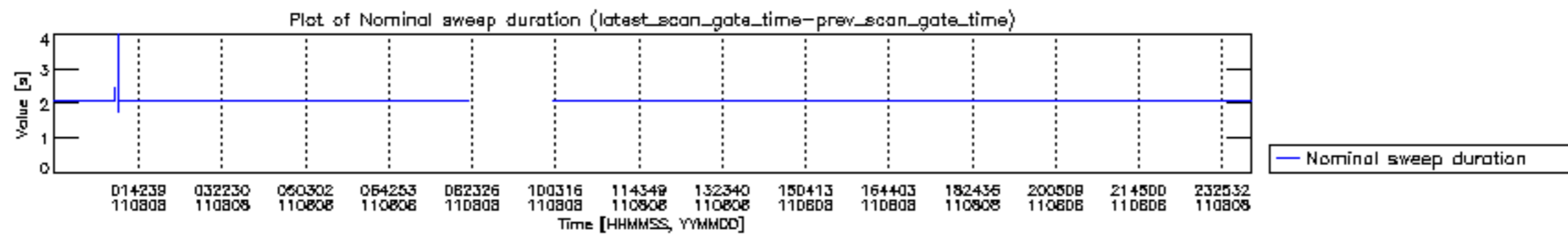
mipas_daily_report_level0_KSPT_L0_4504_N_20110808_13.PNG

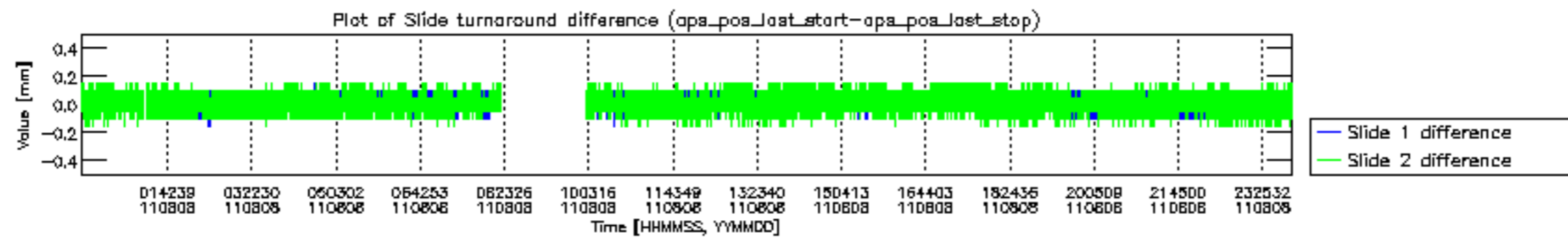


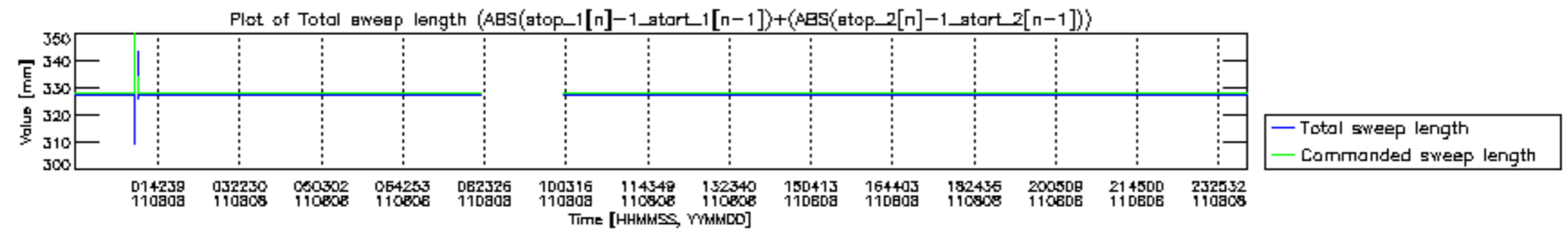


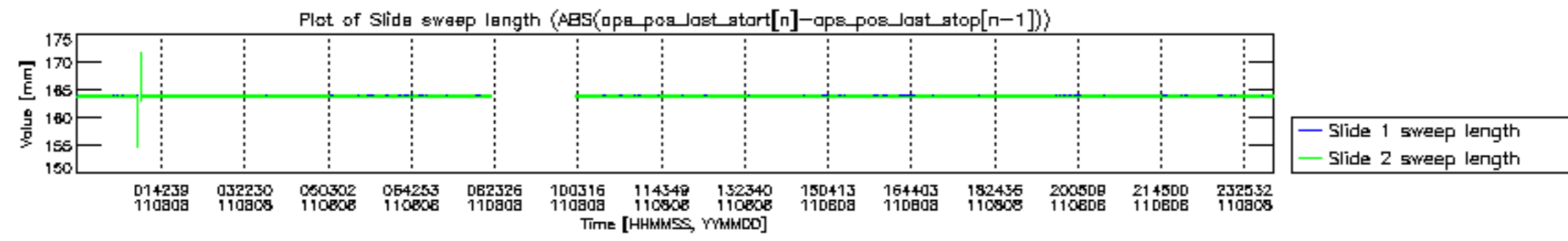


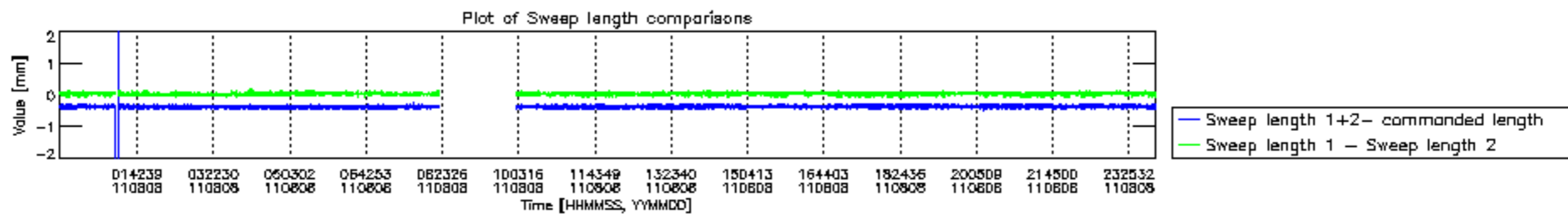


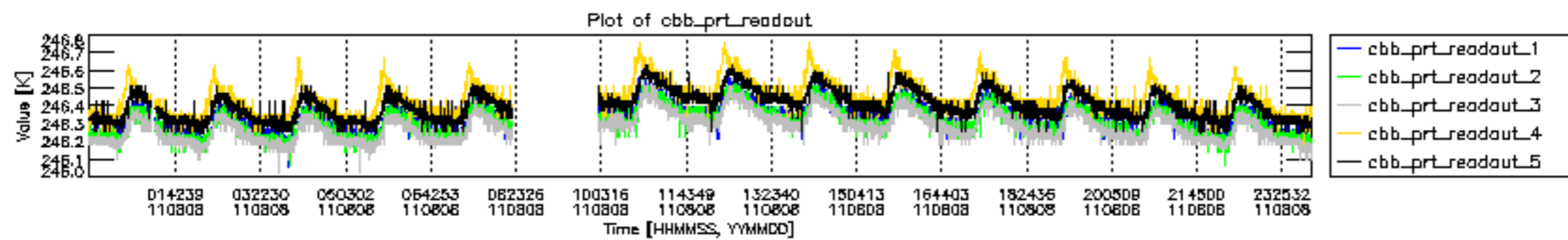


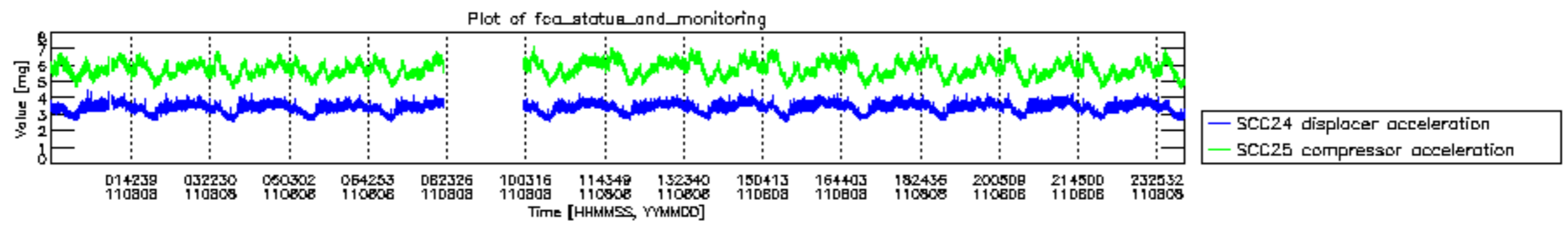












MIPNLOP_MIPSOUPAC_aux_fields_igm_cal, channel statistics plot
 Colour indicates value.

