

0. MIPAS Daily Report for level 0 products

[0.1 General Info](#)

[0.2 Instrument Operational Performance Parameters](#)

[0.3 ADF monitoring](#)

0.1 General Info

This report contains a daily analysis on parameters extracted from MIPAS level 0 data (The MIP_NL__0P product).

0.1.1 Report summary

The table below shows general characteristics of the data that are included into this report.

Item	Value
Report version	v1.6 08-11-2010
Time of report generation	11AUG2011 05:24:06
Data source version	KSPT_L0/4504-N
Processing scope for products	06AUG2011 00:00:00 to 07AUG2011 00:00:00
Start time of first product within scope	06AUG2011 00:32:24
Stop time of last product within scope	07AUG2011 01:34:57
Total number of level 0 products	15
Number of level 0 products with errors	0

0.1.2 Product Quality Indicators per product

The following table shows a summary for each product used in this report.

#	Product name	Start time	Stop time	Prod err	ISP err sign	ISP miss sign	ISP disc sign	rs sign
0	MIP_NL__OPNPDE20110806_003224_000058933105_00174_49326_9382.N1	06AUG2011 00:32:24	06AUG2011 02:10:37	0	0	0	0	0
1	MIP_NL__OPNPDE20110806_020938_000044453105_00175_49327_9383.N1	06AUG2011 02:09:38	06AUG2011 03:23:44	0	0	0	0	0
2	MIP_NL__OPNPDE20110806_032310_000061773105_00176_49328_9384.N1	06AUG2011 03:23:10	06AUG2011 05:06:07	0	0	0	0	0
3	MIP_NL__OPNPDE20110806_050532_000024533105_00177_49329_9385.N1	06AUG2011 05:05:32	06AUG2011 05:46:24	0	0	0	0	0
4	MIP_NL__OPNPDK20110806_090211_000019473105_00179_49331_5971.N1	06AUG2011 09:02:11	06AUG2011 09:34:37	0	0	0	0	0
5	MIP_NL__OPNPDK20110806_093355_000059583105_00180_49332_5972.N1	06AUG2011 09:33:55	06AUG2011 11:13:13	0	0	0	0	0
6	MIP_NL__OPNPDK20110806_111230_000060183105_00181_49333_5973.N1	06AUG2011 11:12:30	06AUG2011 12:52:48	0	0	0	0	0
7	MIP_NL__OPNPDK20110806_125215_000058893105_00182_49334_5974.N1	06AUG2011 12:52:15	06AUG2011 14:30:23	0	0	0	0	0
8	MIP_NL__OPNPDK20110806_142950_000058813105_00183_49335_5975.N1	06AUG2011 14:29:50	06AUG2011 16:07:51	0	0	0	0	0
9	MIP_NL__OPNPDK20110806_160715_000058933105_00184_49336_5976.N1	06AUG2011 16:07:15	06AUG2011 17:45:28	0	0	0	0	0
10	MIP_NL__OPNPDK20110806_174358_000059893105_00185_49337_5977.N1	06AUG2011 17:43:58	06AUG2011 19:23:47	0	0	0	0	0
11	MIP_NL__OPNPDK20110806_192249_000060773105_00186_49338_5978.N1	06AUG2011 19:22:49	06AUG2011 21:04:06	0	0	0	0	0
12	MIP_NL__OPNPDE20110806_210232_000043603105_00187_49339_9386.N1	06AUG2011 21:02:32	06AUG2011 22:15:12	0	0	0	0	0
13	MIP_NL__OPNPDE20110806_221409_000061423105_00187_49339_9387.N1	06AUG2011 22:14:09	06AUG2011 23:56:31	0	0	0	0	0
14	MIP_NL__OPNPDE20110806_235536_000059613105_00188_49340_9388.N1	06AUG2011 23:55:36	07AUG2011 01:34:57	0	0	0	0	0

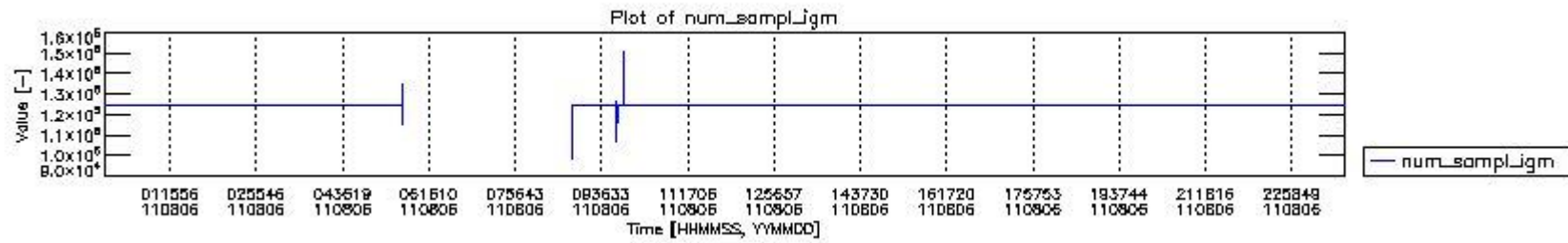
0.2 Instrument Operational Performance Parameters

The following plots give an overview of various instrument parameters for this day. The instrument parameters are part of the auxiliary data field within the source packets of the MIP_NL__0P product. The auxiliary data is normally included twice per interferogram. Note that only the first packet is currently included in monitoring.

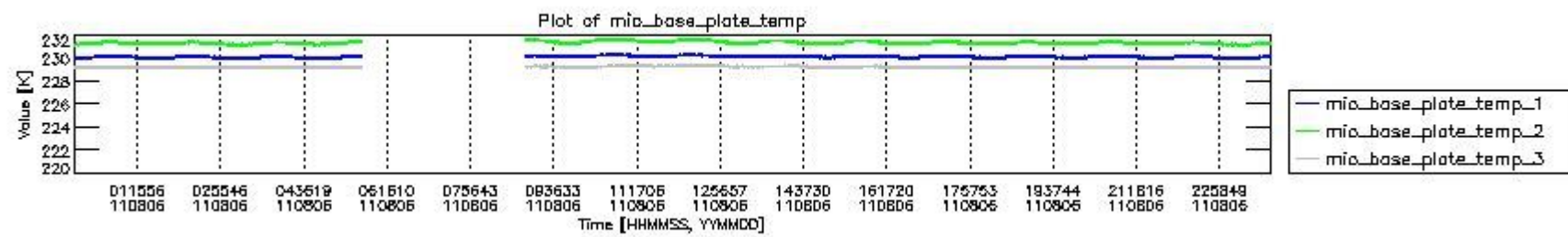
The following table shows the counts of various interferogram number of samples

Number of igm samples	Count [#]	Count [%]
98847	1	0.0027786268
106566	1	0.0027786268
108464	1	0.0027786268

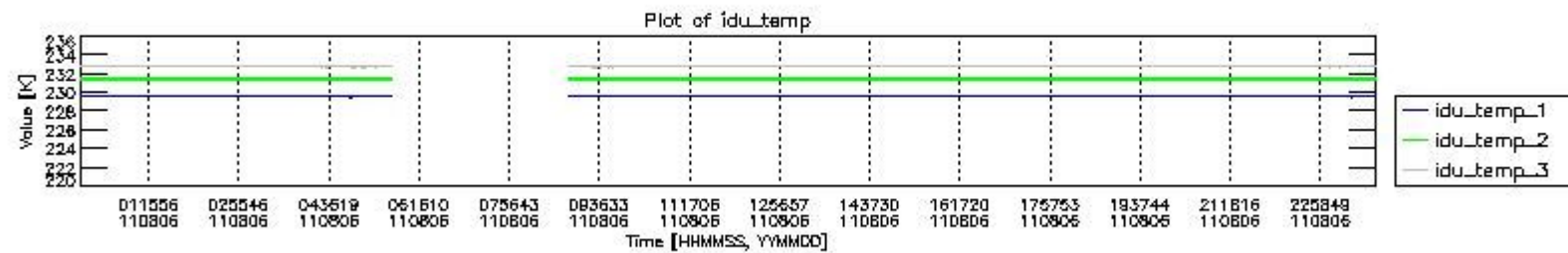
114967	1	0.0027786268
123398	1	0.0027786268
124099	1	0.0027786268
124800	33423	92.870044
124803	2554	7.0966129
125266	1	0.0027786268
126698	1	0.0027786268
127456	1	0.0027786268
135099	1	0.0027786268
147588	1	0.0027786268
150244	1	0.0027786268



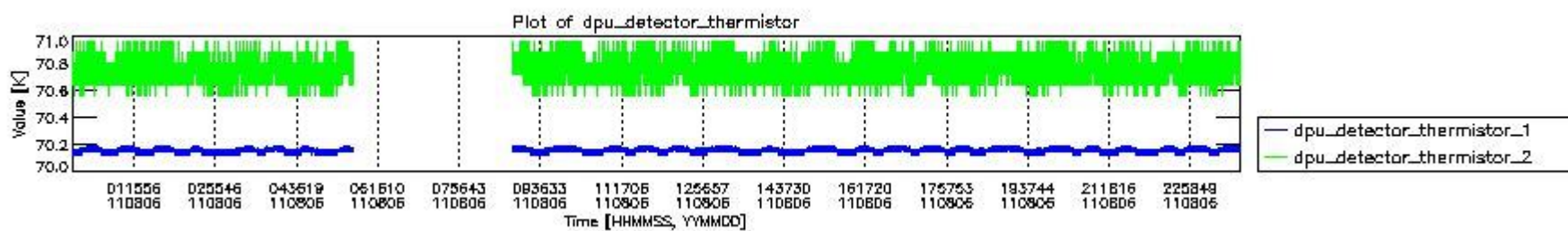
mipas_daily_report_level0_KSPT_L0_4504_N_20110806_0.PNG



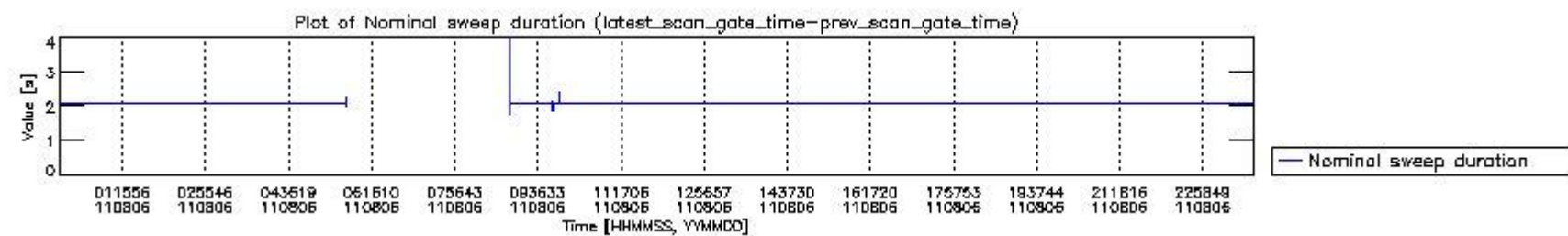
mipas_daily_report_level0_KSPT_L0_4504_N_20110806_1.PNG



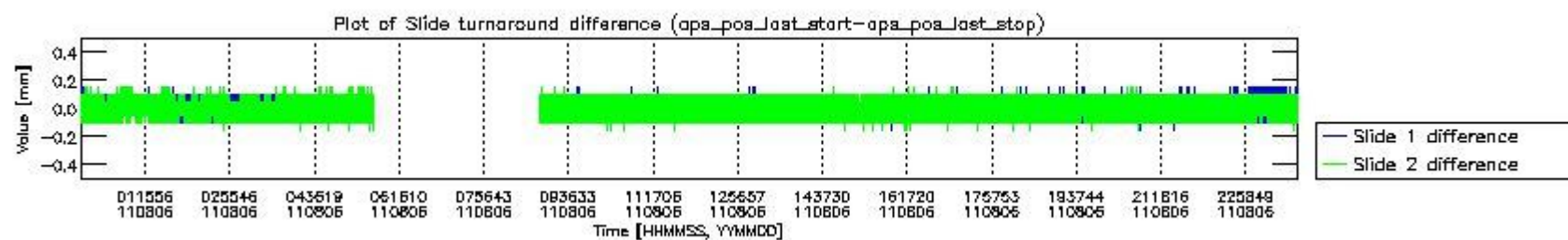
mipas_daily_report_level0_KSPT_L0_4504_N_20110806_2.PNG



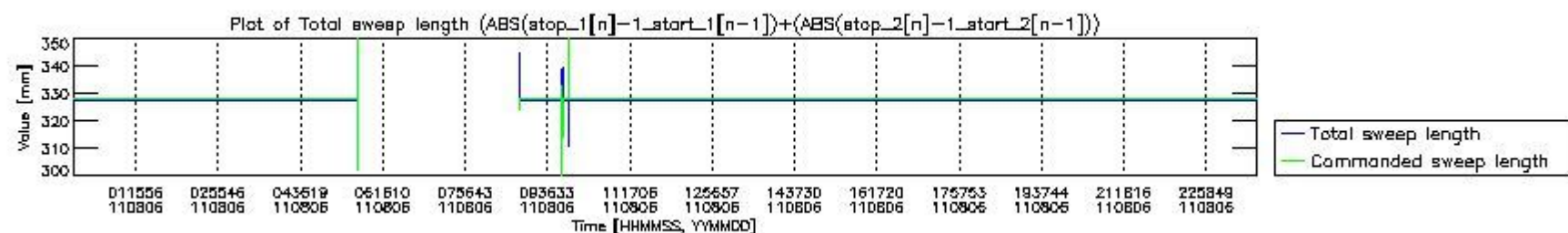
mipas_daily_report_level0_KSPT_L0_4504_N_20110806_3.PNG



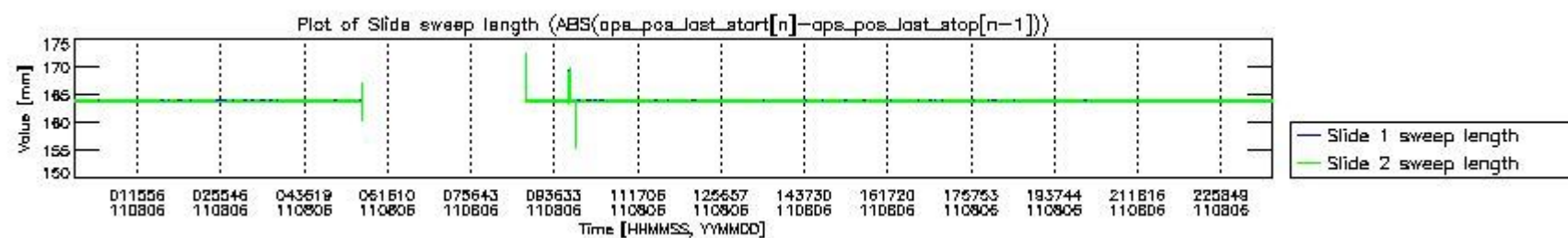
mipas_daily_report_level0_KSPT_L0_4504_N_20110806_4.PNG



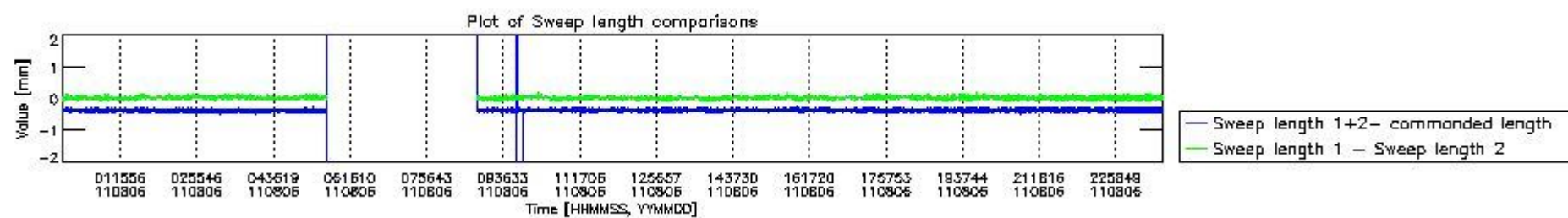
mipas_daily_report_level0_KSPT_L0_4504_N_20110806_5.PNG



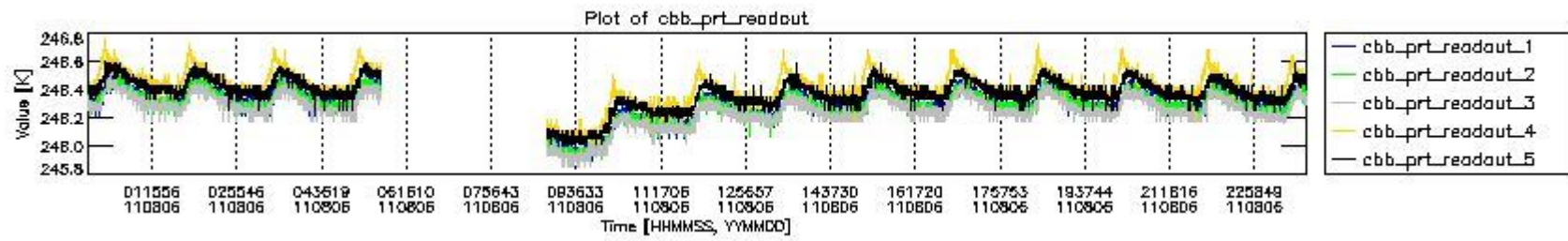
mipas_daily_report_level0_KSPT_L0_4504_N_20110806_6.PNG



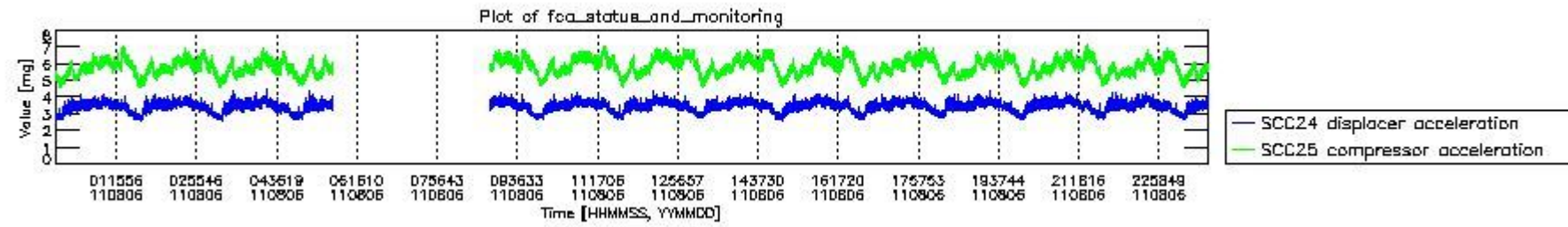
mipas_daily_report_level0_KSPT_L0_4504_N_20110806_7.PNG



mipas_daily_report_level0_KSPT_L0_4504_N_20110806_8.PNG



mipas_daily_report_level0_KSPT_L0_4504_N_20110806_9.PNG

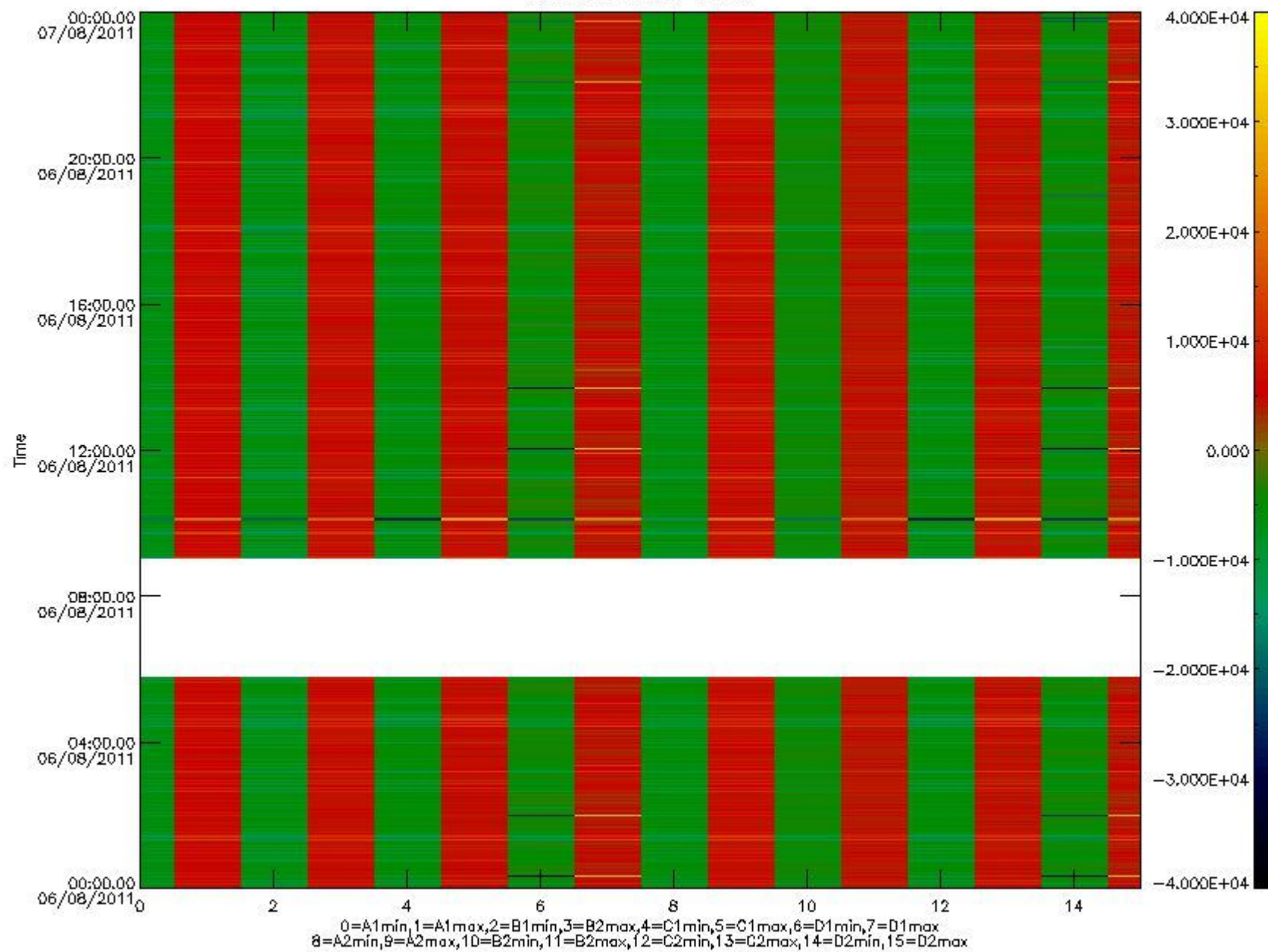


mipas_daily_report_level0_KSPT_L0_4504_N_20110806_10.PNG

The following table shows channel statistics for all channels for this day.

Channel	Min	Max	ADC
A1	-32768	32767	16bit
B1	-32768	32767	16bit
C1	-26285	26274	16bit
D1	-32768	32767	16bit
A2	-32768	28268	16bit
B2	-32768	32767	16bit
C2	-27400	26998	16bit
D2	-32768	32767	16bit

MIPNLOP_MIPSOUPAC_aux_fields_igm_cal, channel statistics plot
Colour indicates value.



mipas_daily_report_level0_KSPT_L0_4504_N_20110806_11.PNG

0.3 ADF monitoring

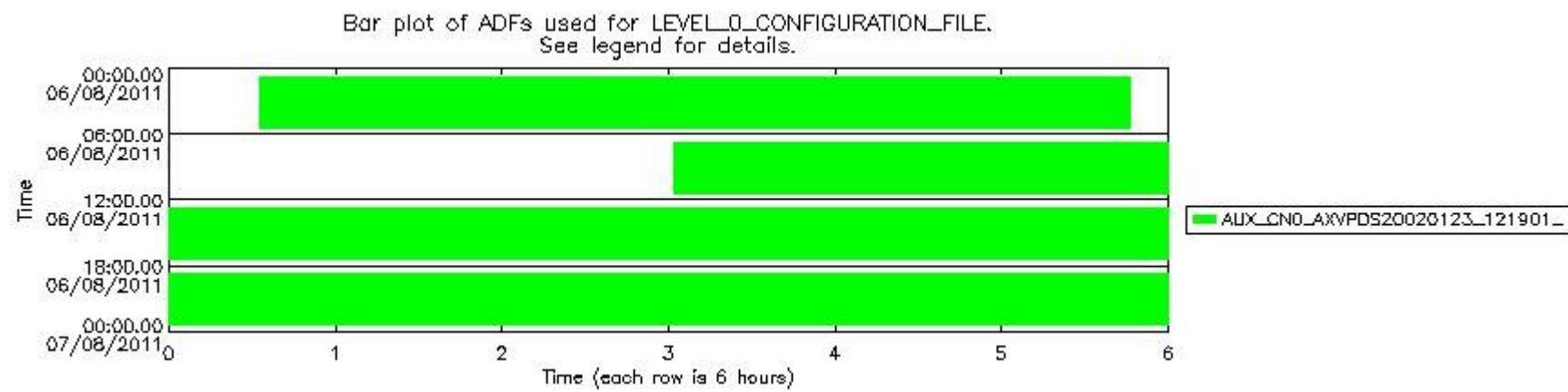
The use of ADFs is shown in two ways:

1. By means of two tables that can be used to find the ADF used for a specific product.
2. By means of plots that show changes in ADF using colours.

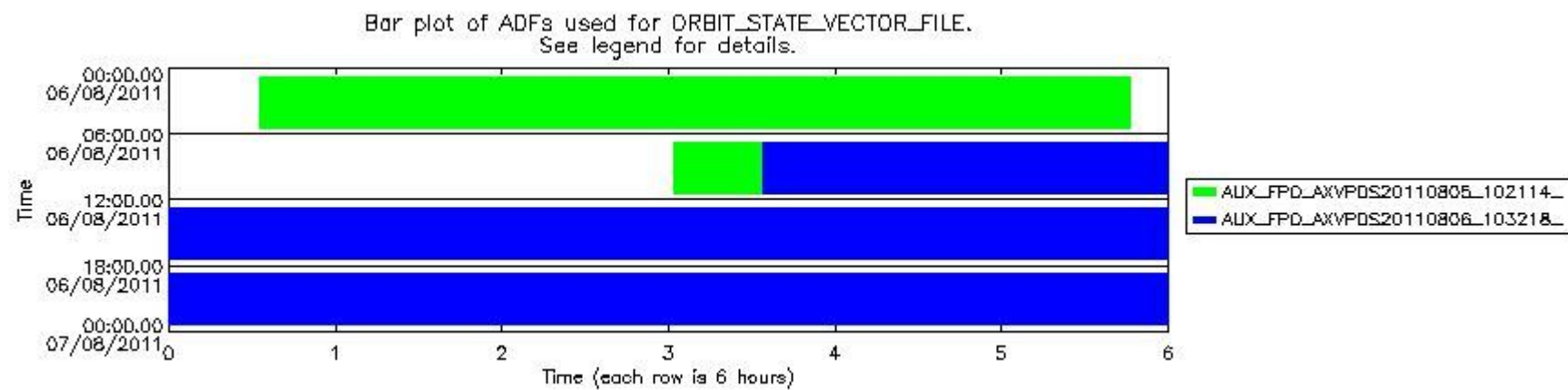
Number	ADF
0	AUX_CN0_AXVPDS20020123_121901_20020101_000000_20200101_000000
1	AUX_FPO_AXVPDS20110805_102114_20110804_183922_20110814_205308
2	AUX_FPO_AXVPDS20110806_103218_20110805_194252_20110815_201624

Number	Product name	#CN0	#FPO
--------	--------------	------	------

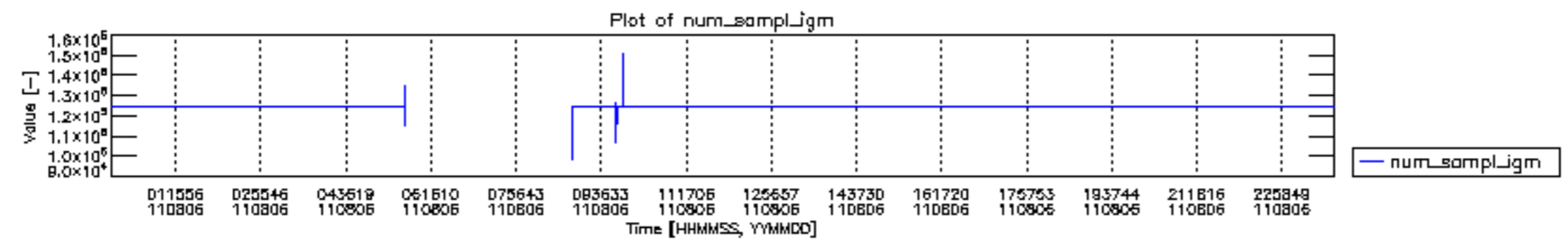
0	MIP_NL__0PNPDE20110806_003224_000058933105_00174_49326_9382.N1	0	1
1	MIP_NL__0PNPDE20110806_020938_000044453105_00175_49327_9383.N1	0	1
2	MIP_NL__0PNPDE20110806_032310_000061773105_00176_49328_9384.N1	0	1
3	MIP_NL__0PNPDE20110806_050532_000024533105_00177_49329_9385.N1	0	1
4	MIP_NL__0PNPDK20110806_090211_000019473105_00179_49331_5971.N1	0	1
5	MIP_NL__0PNPDK20110806_093355_000059583105_00180_49332_5972.N1	0	2
6	MIP_NL__0PNPDK20110806_111230_000060183105_00181_49333_5973.N1	0	2
7	MIP_NL__0PNPDK20110806_125215_000058893105_00182_49334_5974.N1	0	2
8	MIP_NL__0PNPDK20110806_142950_000058813105_00183_49335_5975.N1	0	2
9	MIP_NL__0PNPDK20110806_160715_000058933105_00184_49336_5976.N1	0	2
10	MIP_NL__0PNPDK20110806_174358_000059893105_00185_49337_5977.N1	0	2
11	MIP_NL__0PNPDK20110806_192249_000060773105_00186_49338_5978.N1	0	2
12	MIP_NL__0PNPDE20110806_210232_000043603105_00187_49339_9386.N1	0	2
13	MIP_NL__0PNPDE20110806_221409_000061423105_00187_49339_9387.N1	0	2
14	MIP_NL__0PNPDE20110806_235536_000059613105_00188_49340_9388.N1	0	2

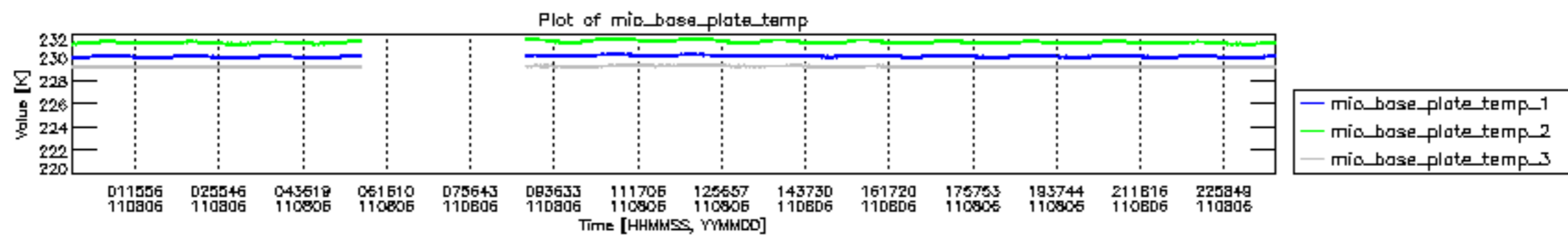


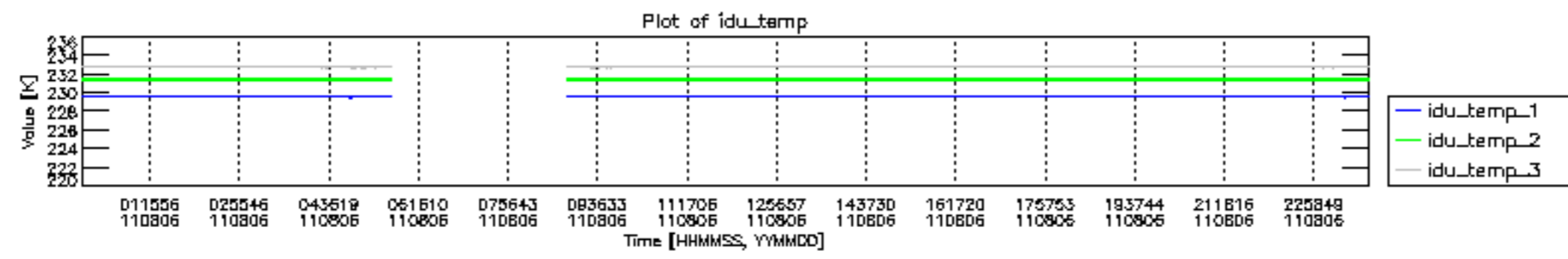
mipas_daily_report_level0_KSPT_L0_4504_N_20110806_12.PNG

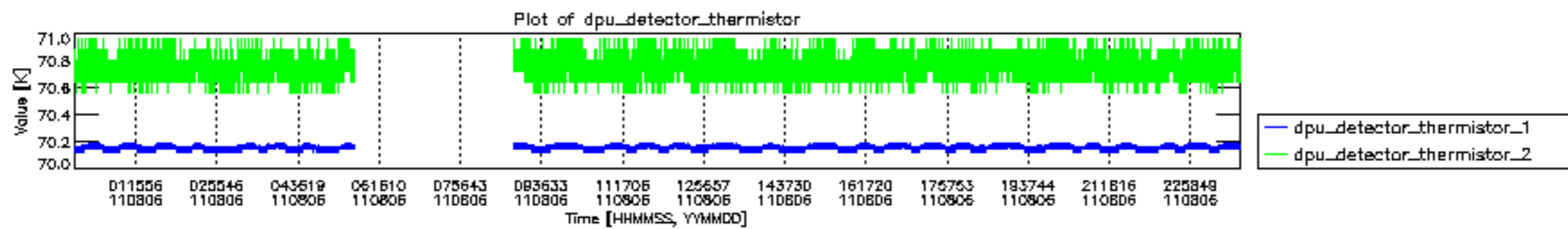


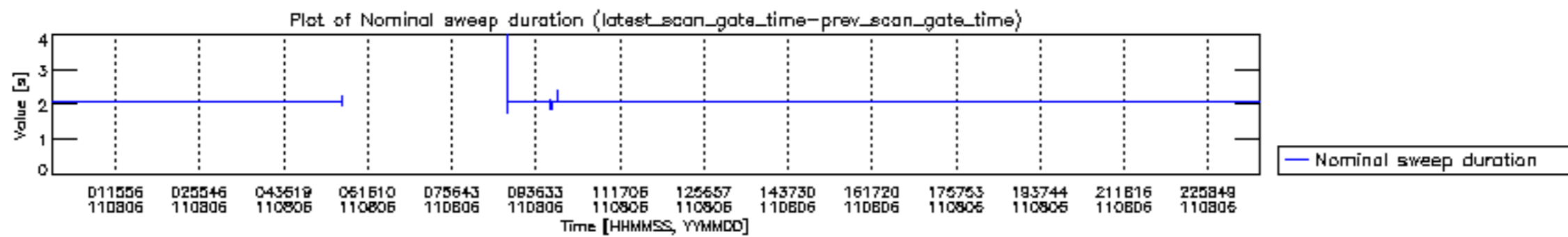
mipas_daily_report_level0_KSPT_L0_4504_N_20110806_13.PNG

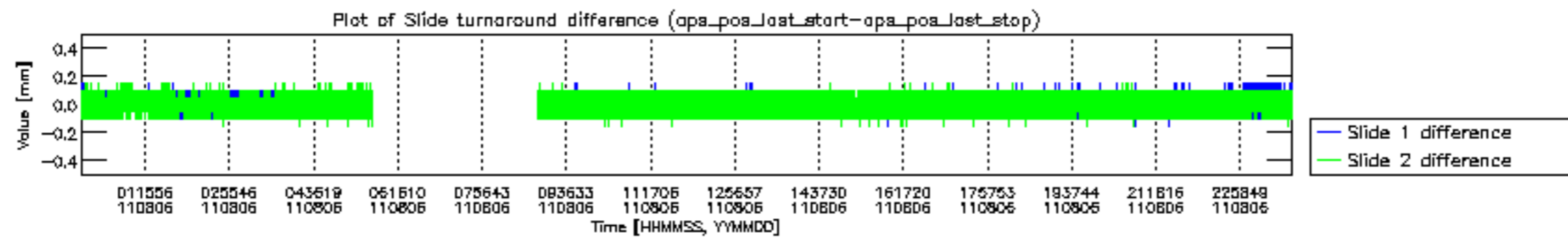


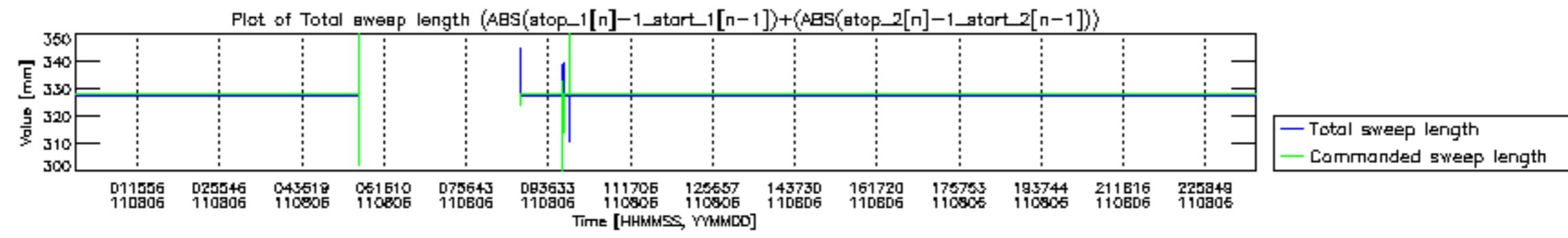


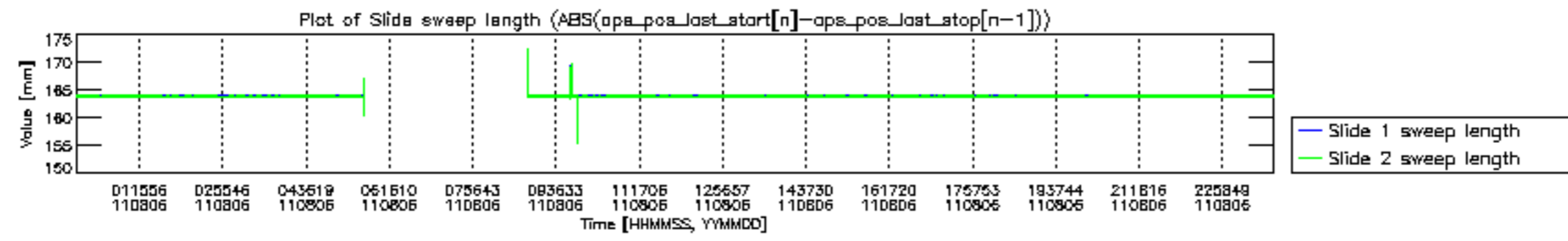


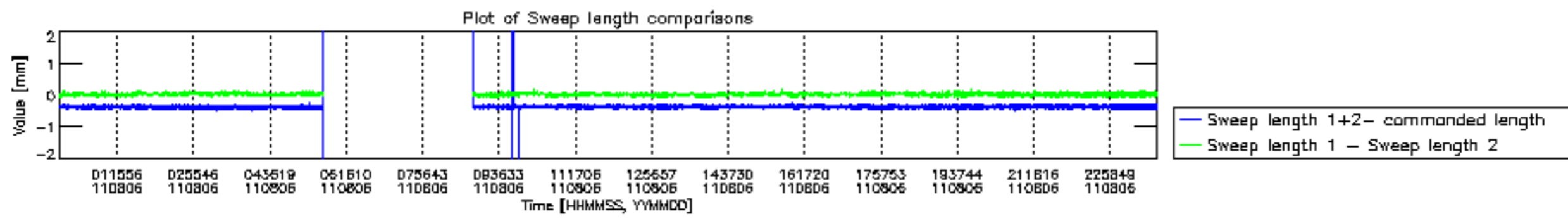


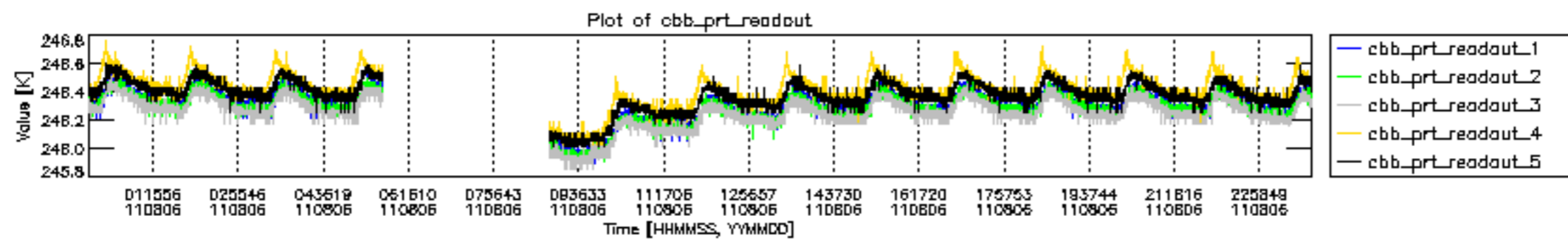


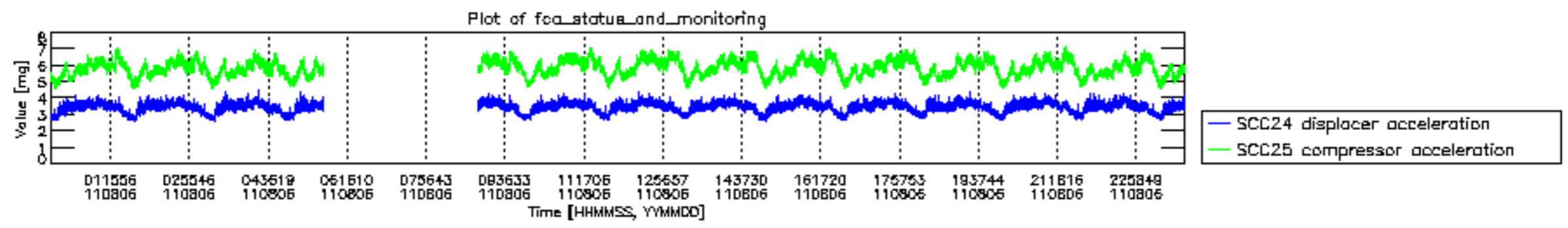












MIPNLOP_MIPSOUPAC_aux_fields_igm_cal, channel statistics plot
 Colour indicates value.

