

## 0. MIPAS Daily Report for level 0 products

### [0.1 General Info](#)

### [0.2 Instrument Operational Performance Parameters](#)

### [0.3 ADF monitoring](#)

## 0.1 General Info

This report contains a daily analysis on parameters extracted from MIPAS level 0 data (The MIP\_NL\_\_0P product).

### 0.1.1 Report summary

The table below shows general characteristics of the data that are included into this report.

Item	Value
Report version	v1.6 08-11-2010
Time of report generation	09AUG2011 05:24:30
Data source version	KSPT_L0/4504-N
Processing scope for products	04AUG2011 00:00:00 to 05AUG2011 00:00:00
Start time of first product within scope	04AUG2011 00:04:40
Stop time of last product within scope	05AUG2011 01:08:55
Total number of level 0 products	15
Number of level 0 products with errors	0

### 0.1.2 Product Quality Indicators per product

The following table shows a summary for each product used in this report.

#	Product name	Start time	Stop time	Prod err	ISP err sign	ISP miss sign	ISP disc sign	rs sign
0	MIP_NL__0PNPDE20110804_000440_000059283105_00145_49297_9369.N1	04AUG2011 00:04:40	04AUG2011 01:43:28	0	0	0	0	0
1	MIP_NL__0PNPDE20110804_014232_000044683105_00146_49298_9370.N1	04AUG2011 01:42:32	04AUG2011 02:57:00	0	0	0	0	0
2	MIP_NL__0PNPDE20110804_025627_000061313105_00147_49299_9371.N1	04AUG2011 02:56:27	04AUG2011 04:38:38	0	0	0	0	0
3	MIP_NL__0PNPDE20110804_043805_000060313105_00148_49300_9372.N1	04AUG2011 04:38:05	04AUG2011 06:18:36	0	0	0	0	0
4	MIP_NL__0PNPDK20110804_061802_000041513105_00149_49301_5953.N1	04AUG2011 06:18:02	04AUG2011 07:27:13	0	0	0	0	0
5	MIP_NL__0PNPDK20110804_072640_000060793105_00150_49302_5954.N1	04AUG2011 07:26:40	04AUG2011 09:07:59	0	0	0	0	0
6	MIP_NL__0PNPDK20110804_104624_000059873105_00152_49304_5956.N1	04AUG2011 10:46:24	04AUG2011 12:26:11	0	0	0	0	0
7	MIP_NL__0PNPDK20110804_122527_000059223105_00153_49305_5957.N1	04AUG2011 12:25:27	04AUG2011 14:04:10	0	0	0	0	0
8	MIP_NL__0PNPDK20110804_140336_000058913105_00154_49306_5958.N1	04AUG2011 14:03:36	04AUG2011 15:41:47	0	0	0	0	0
9	MIP_NL__0PNPDK20110804_154103_000059063105_00155_49307_5959.N1	04AUG2011 15:41:03	04AUG2011 17:19:29	0	0	0	0	0
10	MIP_NL__0PNPDK20110804_171830_000059143105_00156_49308_5961.N1	04AUG2011 17:18:30	04AUG2011 18:57:04	0	0	0	0	0
11	MIP_NL__0PNPDK20110804_185606_000060563105_00157_49309_5962.N1	04AUG2011 18:56:06	04AUG2011 20:37:02	0	0	0	0	0
12	MIP_NL__0PNPDE20110804_203528_000043953105_00158_49310_9373.N1	04AUG2011 20:35:28	04AUG2011 21:48:43	0	0	0	0	0
13	MIP_NL__0PNPDE20110804_214745_000060293105_00158_49310_9374.N1	04AUG2011 21:47:45	04AUG2011 23:28:14	0	0	0	0	0
14	MIP_NL__0PNPDE20110804_232709_000061063105_00159_49311_9375.N1	04AUG2011 23:27:09	05AUG2011 01:08:55	0	0	0	0	0

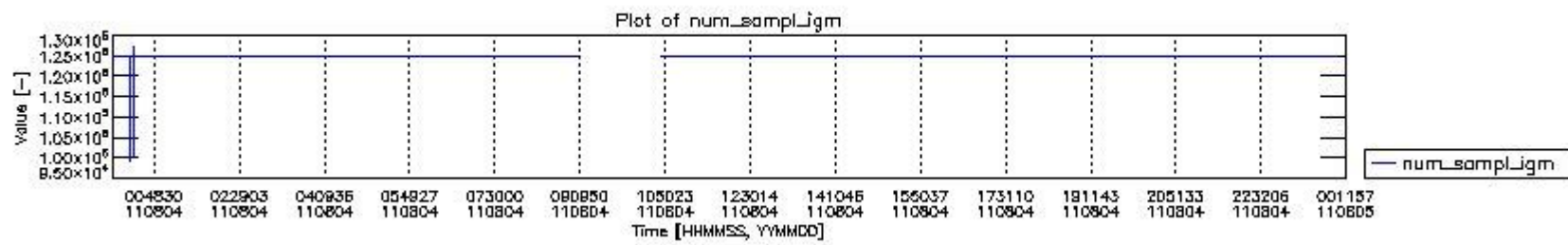
## 0.2 Instrument Operational Performance Parameters

The following plots give an overview of various instrument parameters for this day. The instrument parameters are part of the auxiliary data field within the source packets of the MIP\_NL\_\_0P product. The auxiliary data is normally included twice per interferogram. Note that only the first packet is currently included in monitoring.

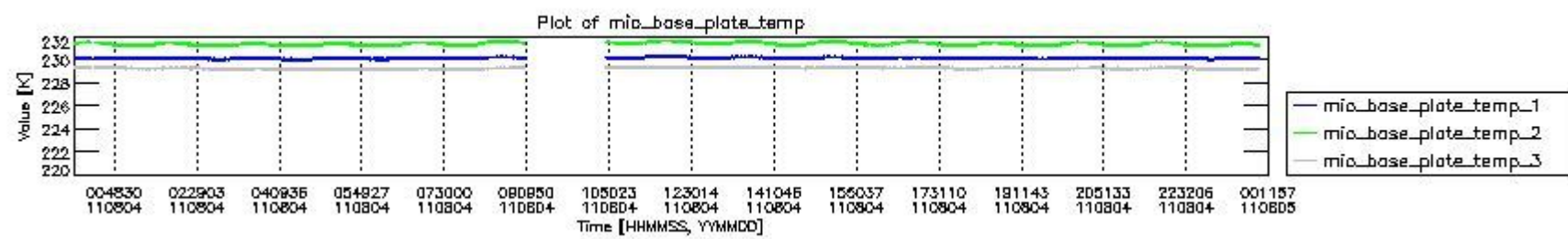
The following table shows the counts of various interferogram number of samples

Number of igm samples	Count [#]	Count [%]
99246	1	0.0025897343
100632	1	0.0025897343
101957	1	0.0025897343

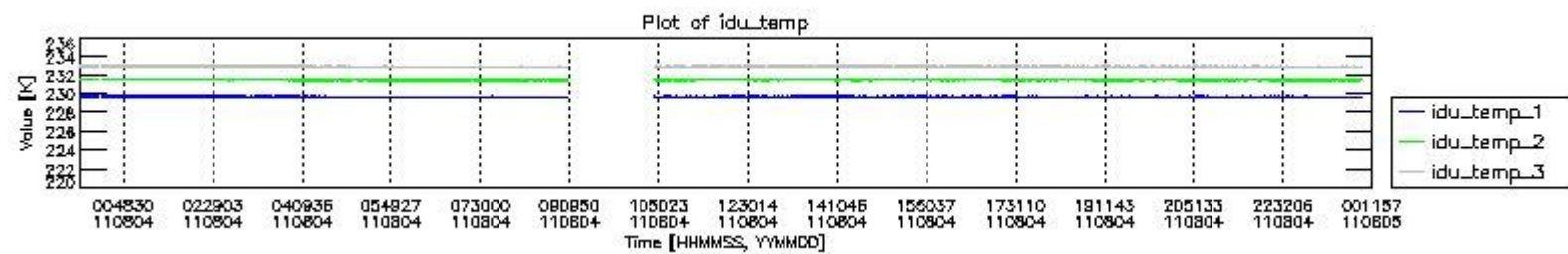
122089	1	0.0025897343
124800	36389	94.237841
124803	2219	5.7466204
125884	1	0.0025897343
126968	1	0.0025897343



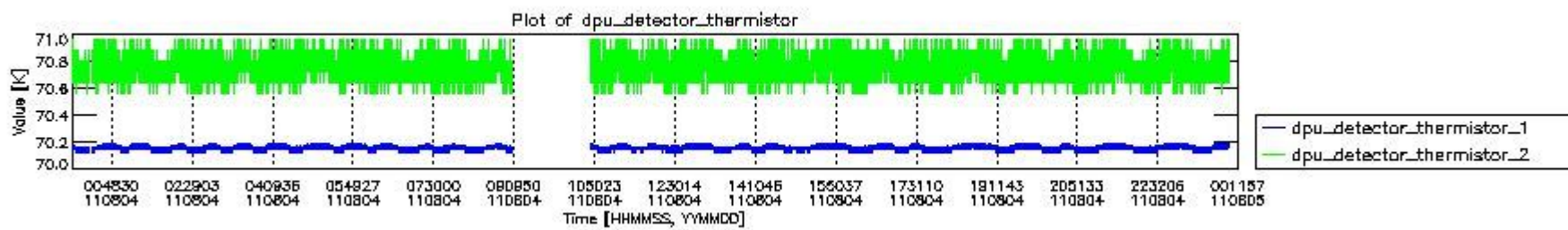
mipas\_daily\_report\_level0\_KSPT\_L0\_4504\_N\_20110804\_0.PNG



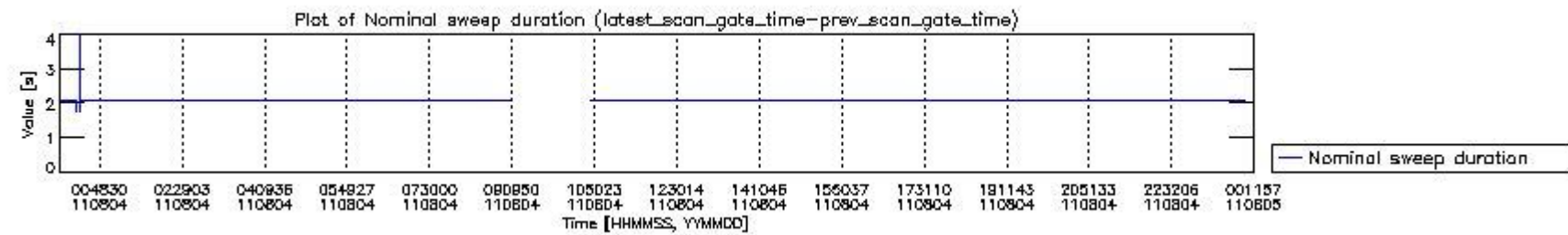
mipas\_daily\_report\_level0\_KSPT\_L0\_4504\_N\_20110804\_1.PNG



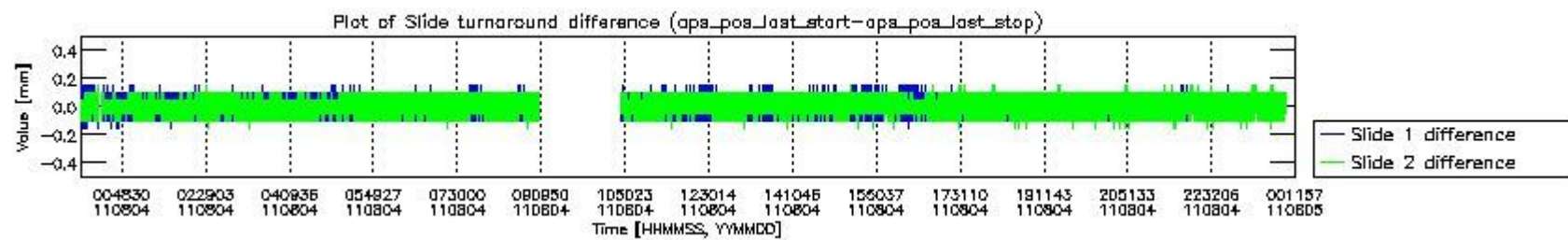
mipas\_daily\_report\_level0\_KSPT\_L0\_4504\_N\_20110804\_2.PNG



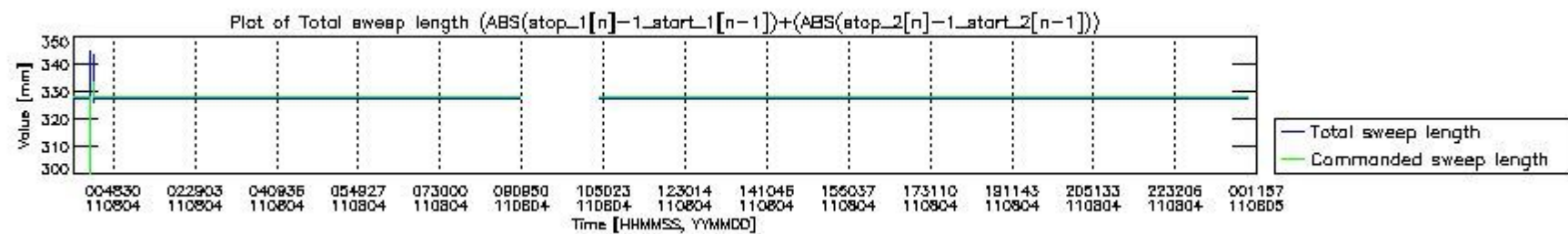
mipas\_daily\_report\_level0\_KSPT\_L0\_4504\_N\_20110804\_3.PNG



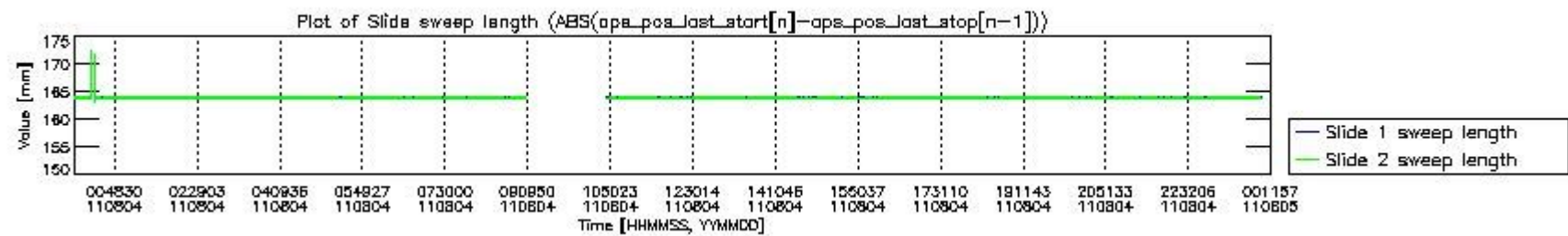
mipas\_daily\_report\_level0\_KSPT\_L0\_4504\_N\_20110804\_4.PNG



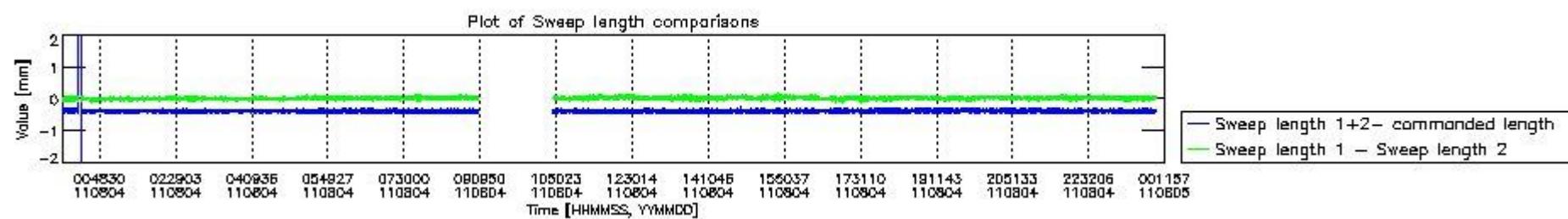
mipas\_daily\_report\_level0\_KSPT\_L0\_4504\_N\_20110804\_5.PNG



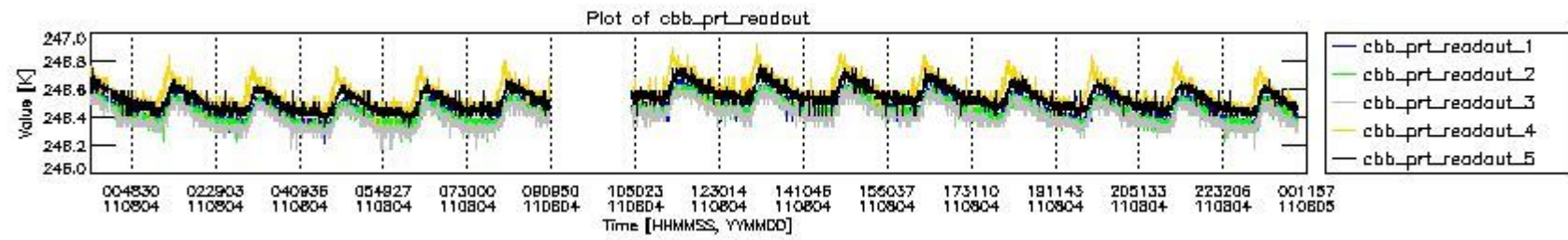
mipas\_daily\_report\_level0\_KSPT\_L0\_4504\_N\_20110804\_6.PNG



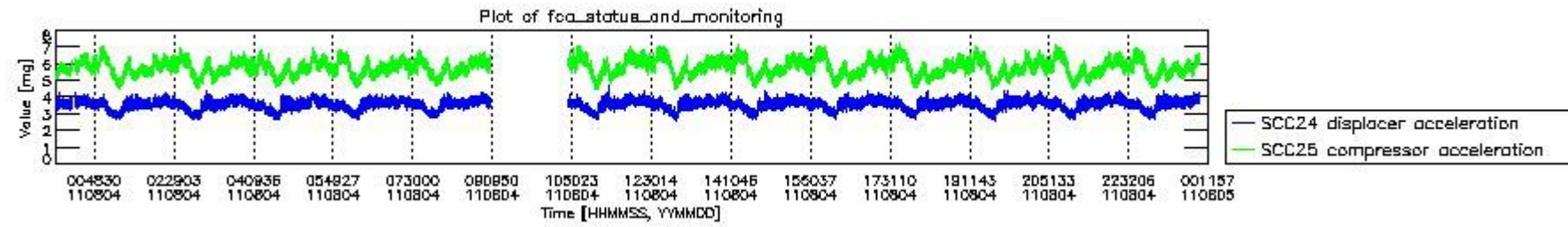
mipas\_daily\_report\_level0\_KSPT\_L0\_4504\_N\_20110804\_7.PNG



mipas\_daily\_report\_level0\_KSPT\_L0\_4504\_N\_20110804\_8.PNG



mipas\_daily\_report\_level0\_KSPT\_L0\_4504\_N\_20110804\_9.PNG

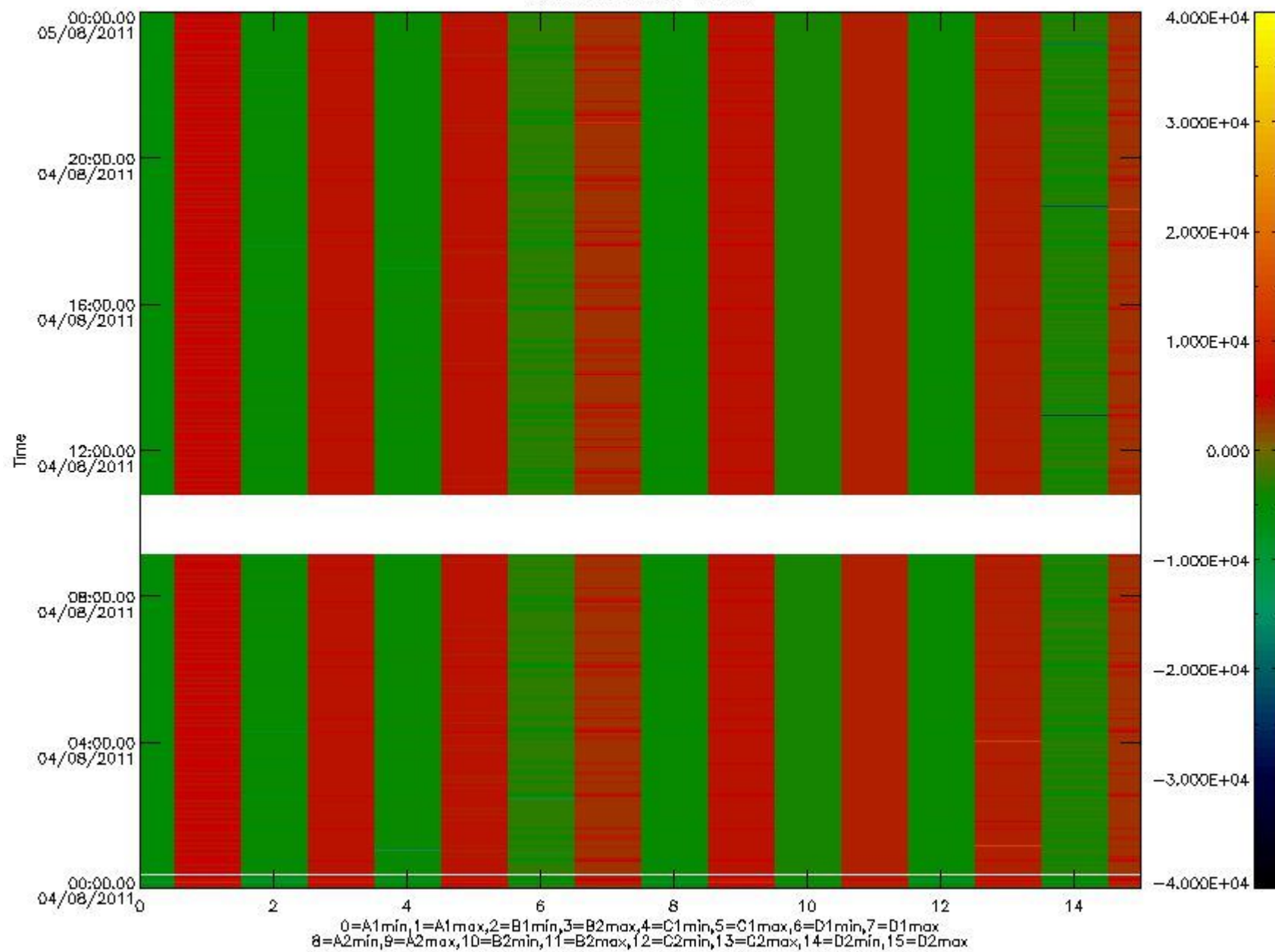


mipas\_daily\_report\_level0\_KSPT\_L0\_4504\_N\_20110804\_10.PNG

The following table shows channel statistics for all channels for this day.

Channel	Min	Max	ADC
A1	-16655	17470	16bit
B1	-17624	15389	16bit
C1	-21696	20381	16bit
D1	-16990	32767	16bit
A2	-14242	17186	16bit
B2	-15559	15279	16bit
C2	-20902	23711	16bit
D2	-32768	19621	16bit

MIPNLOP\_MIPSOUPAC\_aux\_fields\_igm\_cal, channel statistics plot  
Colour indicates value.



mipas\_daily\_report\_level0\_KSPT\_L0\_4504\_N\_20110804\_11.PNG

### 0.3 ADF monitoring

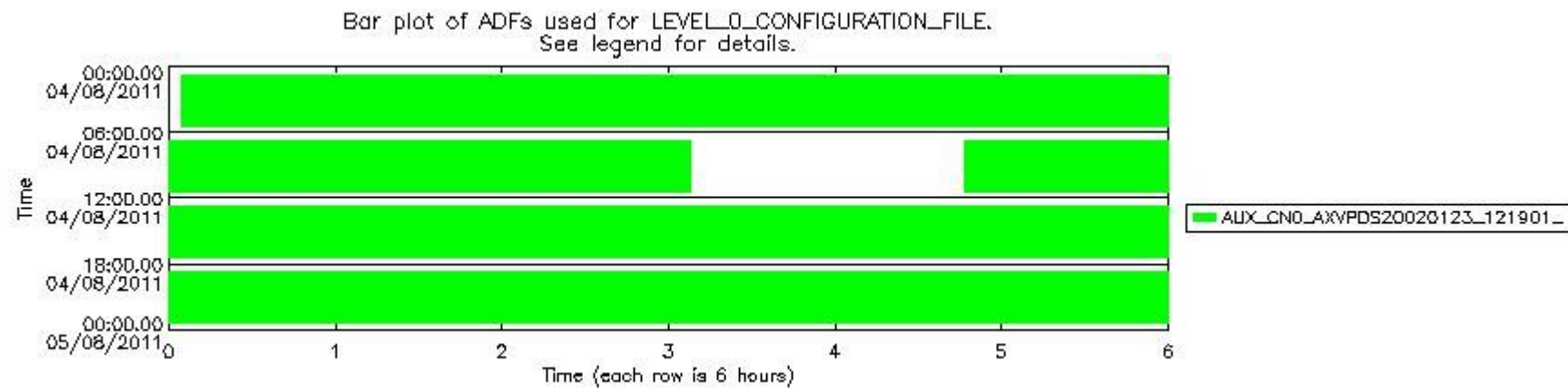
The use of ADFs is shown in two ways:

1. By means of two tables that can be used to find the ADF used for a specific product.
2. By means of plots that show changes in ADF using colours.

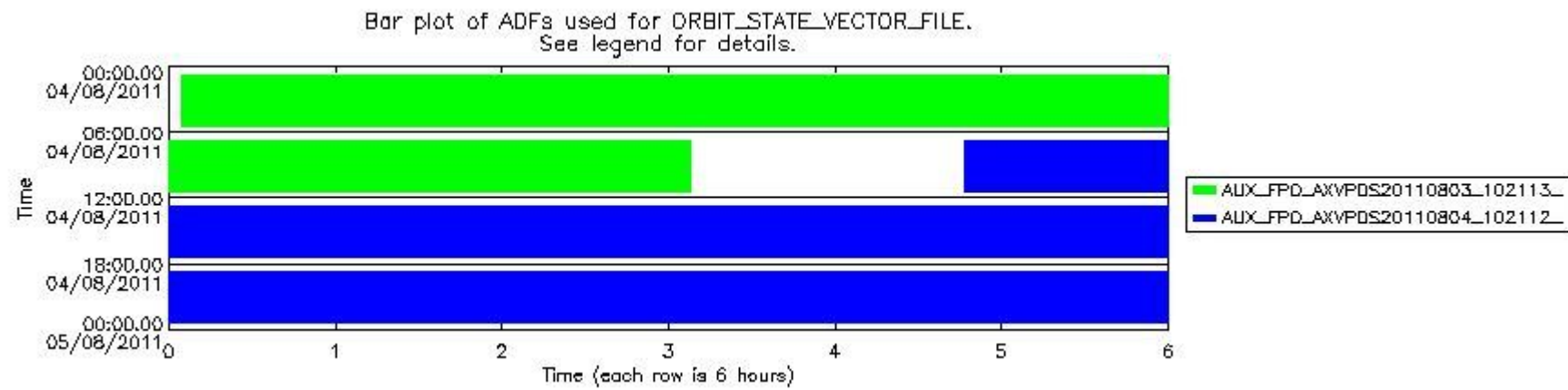
Number	ADF
0	AUX_CN0_AXVPDS20020123_121901_20020101_000000_20200101_000000
1	AUX_FPO_AXVPDS20110803_102113_20110802_195251_20110812_202623
2	AUX_FPO_AXVPDS20110804_102112_20110803_191606_20110813_212952

Number	Product name	#CN0	#FPO
--------	--------------	------	------

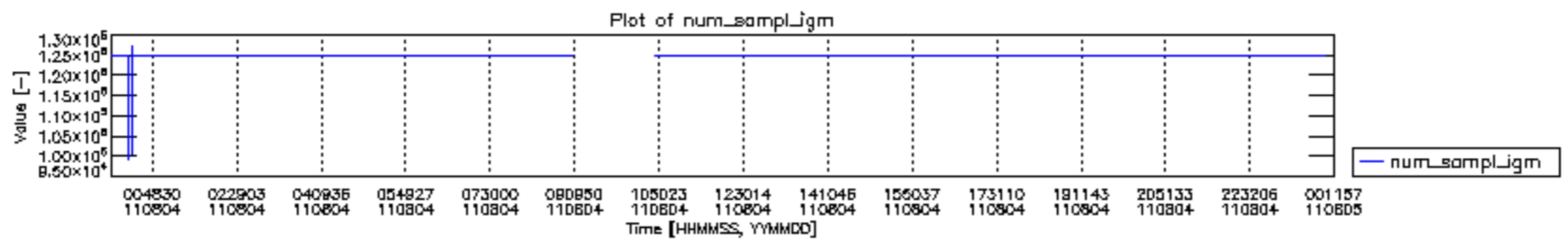
0	MIP_NL__0PNPDE20110804_000440_000059283105_00145_49297_9369.N1	0	1
1	MIP_NL__0PNPDE20110804_014232_000044683105_00146_49298_9370.N1	0	1
2	MIP_NL__0PNPDE20110804_025627_000061313105_00147_49299_9371.N1	0	1
3	MIP_NL__0PNPDE20110804_043805_000060313105_00148_49300_9372.N1	0	1
4	MIP_NL__0PNPDK20110804_061802_000041513105_00149_49301_5953.N1	0	1
5	MIP_NL__0PNPDK20110804_072640_000060793105_00150_49302_5954.N1	0	1
6	MIP_NL__0PNPDK20110804_104624_000059873105_00152_49304_5956.N1	0	2
7	MIP_NL__0PNPDK20110804_122527_000059223105_00153_49305_5957.N1	0	2
8	MIP_NL__0PNPDK20110804_140336_000058913105_00154_49306_5958.N1	0	2
9	MIP_NL__0PNPDK20110804_154103_000059063105_00155_49307_5959.N1	0	2
10	MIP_NL__0PNPDK20110804_171830_000059143105_00156_49308_5961.N1	0	2
11	MIP_NL__0PNPDK20110804_185606_000060563105_00157_49309_5962.N1	0	2
12	MIP_NL__0PNPDE20110804_203528_000043953105_00158_49310_9373.N1	0	2
13	MIP_NL__0PNPDE20110804_214745_000060293105_00158_49310_9374.N1	0	2
14	MIP_NL__0PNPDE20110804_232709_000061063105_00159_49311_9375.N1	0	2

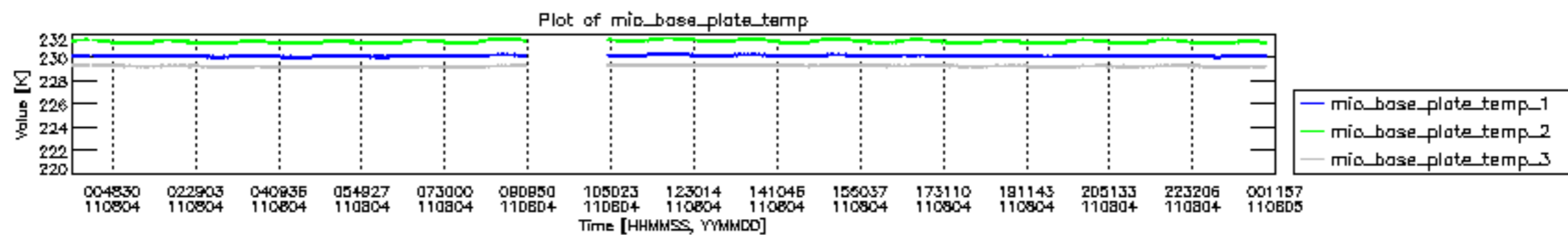


mipas\_daily\_report\_level0\_KSPT\_L0\_4504\_N\_20110804\_12.PNG

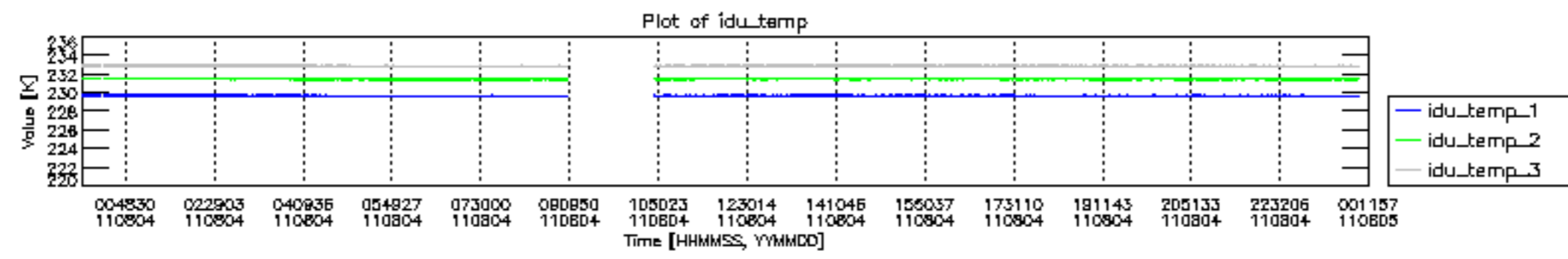


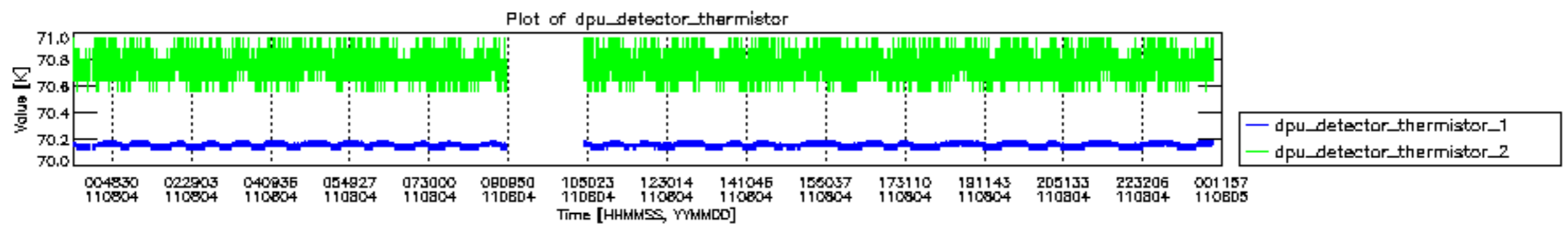
mipas\_daily\_report\_level0\_KSPT\_L0\_4504\_N\_20110804\_13.PNG

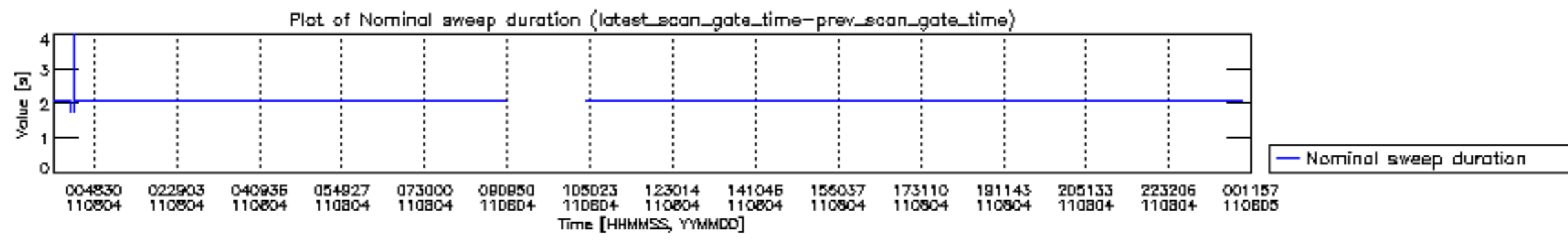


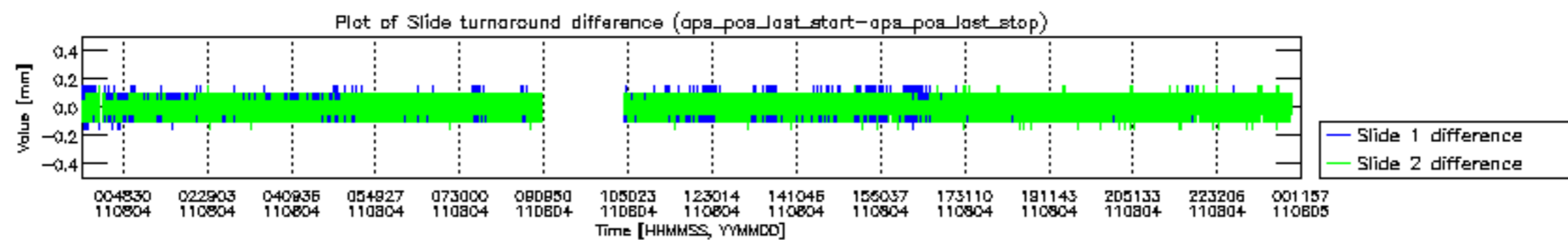


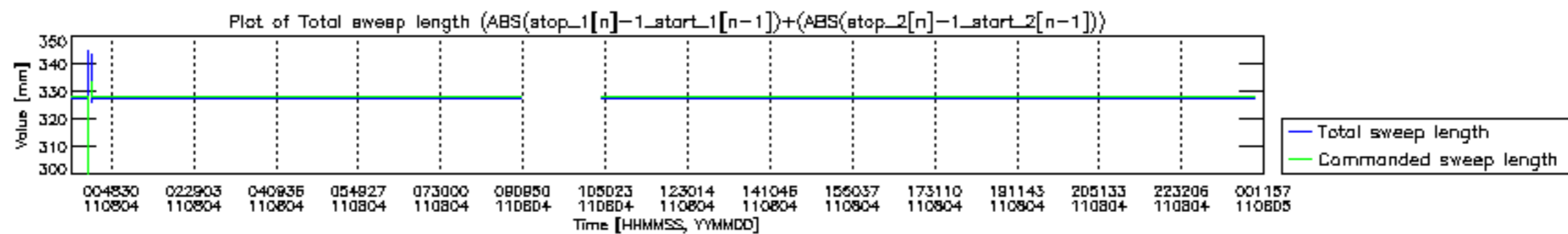


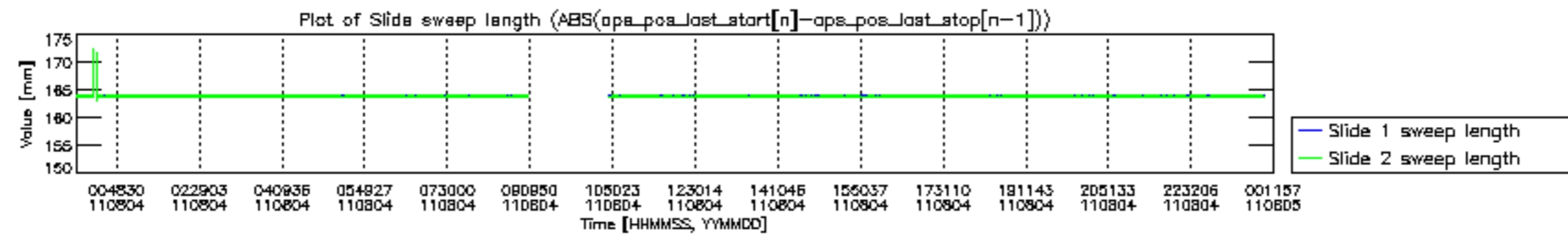


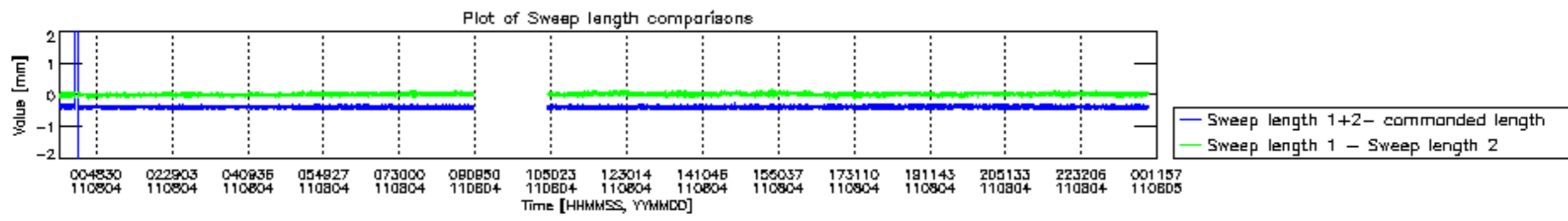


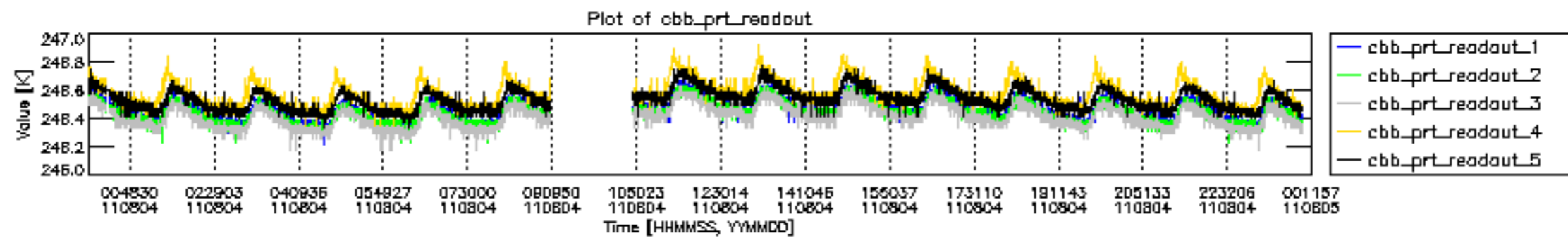




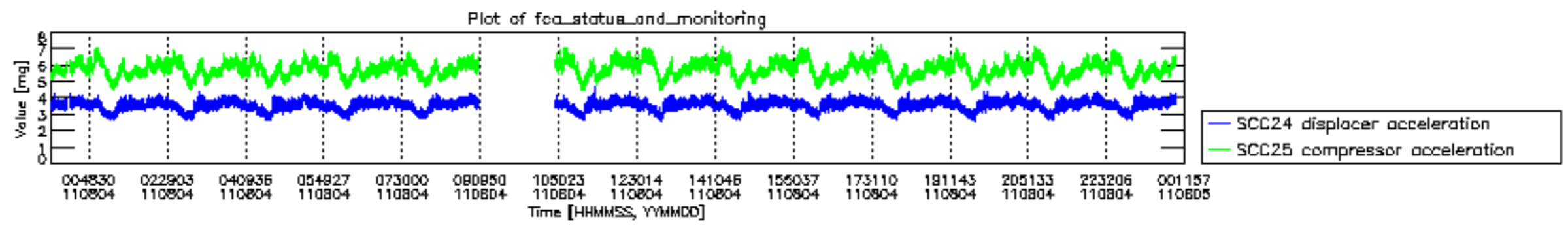












MIPNLOP\_MIPSOUPAC\_aux\_fields\_igm\_cal, channel statistics plot  
 Colour indicates value.

