

## 0. MIPAS Daily Report for level 0 products

### [0.1 General Info](#)

### [0.2 Instrument Operational Performance Parameters](#)

### [0.3 ADF monitoring](#)

## 0.1 General Info

This report contains a daily analysis on parameters extracted from MIPAS level 0 data (The MIP\_NL\_\_0P product).

### 0.1.1 Report summary

The table below shows general characteristics of the data that are included into this report.

Item	Value
Report version	v1.6 08-11-2010
Time of report generation	03AUG2011 05:23:43
Data source version	KSPT_L0/4504-N
Processing scope for products	29JUL2011 00:00:00 to 30JUL2011 00:00:00
Start time of first product within scope	29JUL2011 00:25:35
Stop time of last product within scope	30JUL2011 01:29:06
Total number of level 0 products	15
Number of level 0 products with errors	0

### 0.1.2 Product Quality Indicators per product

The following table shows a summary for each product used in this report.

#	Product name	Start time	Stop time	Prod err	ISP err sign	ISP miss sign	ISP disc sign	rs sign
0	MIP_NL__0PNPDE20110729_002535_000058553105_00059_49211_9329.N1	29JUL2011 00:25:35	29JUL2011 02:03:10	0	0	0	0	0
1	MIP_NL__0PNPDE20110729_020212_000044753105_00060_49212_9330.N1	29JUL2011 02:02:12	29JUL2011 03:16:46	0	0	0	0	0
2	MIP_NL__0PNPDE20110729_031613_000061293105_00061_49213_9331.N1	29JUL2011 03:16:13	29JUL2011 04:58:22	0	0	0	0	0
3	MIP_NL__0PNPDE20110729_045749_000060793105_00062_49214_9332.N1	29JUL2011 04:57:49	29JUL2011 06:39:08	0	0	0	0	0
4	MIP_NL__0PNPDK20110729_063832_000041073105_00063_49215_5896.N1	29JUL2011 06:38:32	29JUL2011 07:46:59	0	0	0	0	0
5	MIP_NL__0PNPDK20110729_074626_000060943105_00064_49216_5897.N1	29JUL2011 07:46:26	29JUL2011 09:27:59	0	0	0	0	0
6	MIP_NL__0PNPDK20110729_092717_000059313105_00065_49217_5898.N1	29JUL2011 09:27:17	29JUL2011 11:06:08	0	0	0	0	0
7	MIP_NL__0PNPDK20110729_110525_000060643105_00066_49218_5899.N1	29JUL2011 11:05:25	29JUL2011 12:46:28	0	0	0	0	0
8	MIP_NL__0PNPDK20110729_124555_000059393105_00067_49219_5900.N1	29JUL2011 12:45:55	29JUL2011 14:24:54	0	0	0	0	0
9	MIP_NL__0PNPDK20110729_142410_000058433105_00068_49220_5901.N1	29JUL2011 14:24:10	29JUL2011 16:01:33	0	0	0	0	0
10	MIP_NL__0PNPDK20110729_160100_000058413105_00069_49221_5902.N1	29JUL2011 16:01:00	29JUL2011 17:38:20	0	0	0	0	0
11	MIP_NL__0PNPDK20110729_173728_000059373105_00070_49222_5903.N1	29JUL2011 17:37:28	29JUL2011 19:16:25	0	0	0	0	0
12	MIP_NL__0PNPDK20110729_191529_000060393105_00071_49223_5904.N1	29JUL2011 19:15:29	29JUL2011 20:56:08	0	0	0	0	0
13	MIP_NL__0PNPDE20110729_205436_000044523105_00072_49224_9333.N1	29JUL2011 20:54:36	29JUL2011 22:08:48	0	0	0	0	0
14	MIP_NL__0PNPDE20110729_234929_000059773105_00073_49225_9335.N1	29JUL2011 23:49:29	30JUL2011 01:29:06	0	0	0	0	0

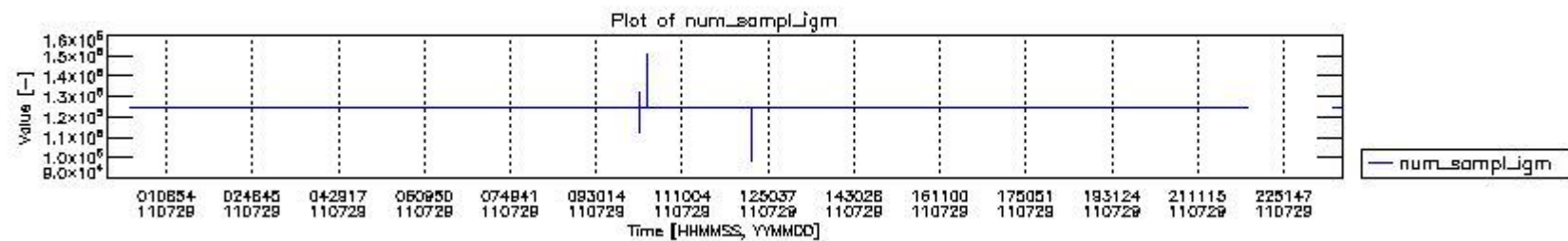
## 0.2 Instrument Operational Performance Parameters

The following plots give an overview of various instrument parameters for this day. The instrument parameters are part of the auxiliary data field within the source packets of the MIP\_NL\_\_0P product. The auxiliary data is normally included twice per interferogram. Note that only the first packet is currently included in monitoring.

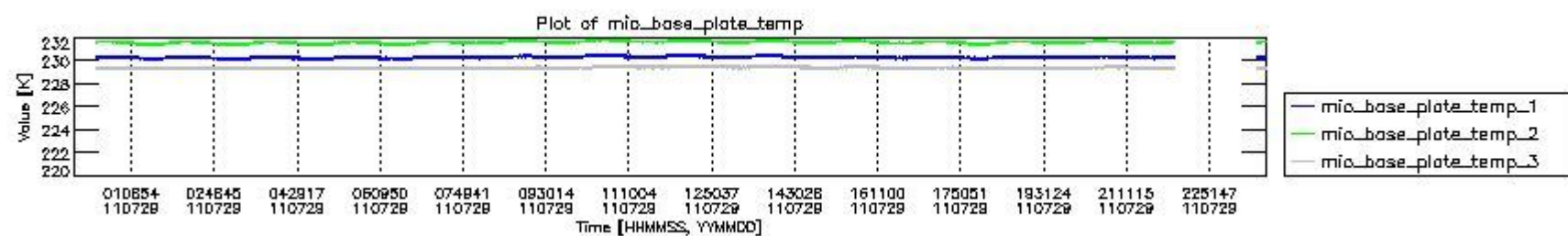
The following table shows the counts of various interferogram number of samples

Number of igm samples	Count [#]	Count [%]
98354	1	0.0026397065
101511	1	0.0026397065
112216	1	0.0026397065

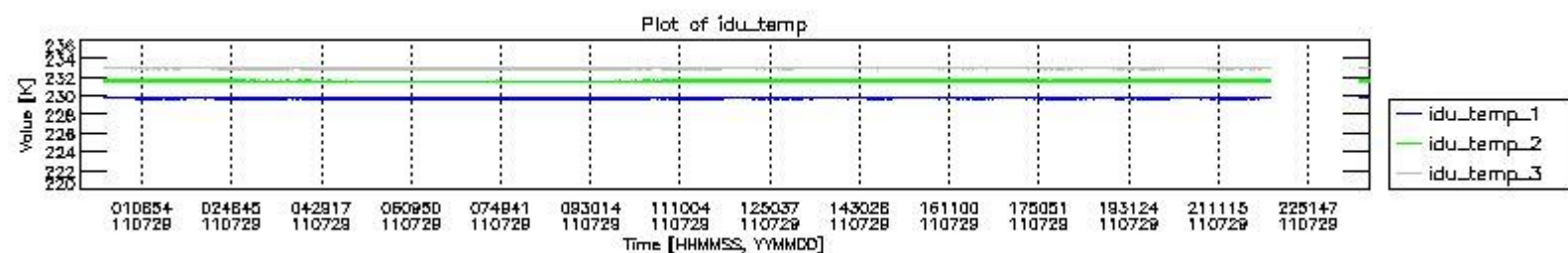
119764	1	0.0026397065
121643	1	0.0026397065
124800	35188	92.885991
124803	2686	7.0902516
127605	1	0.0026397065
132348	1	0.0026397065
147737	1	0.0026397065
150542	1	0.0026397065



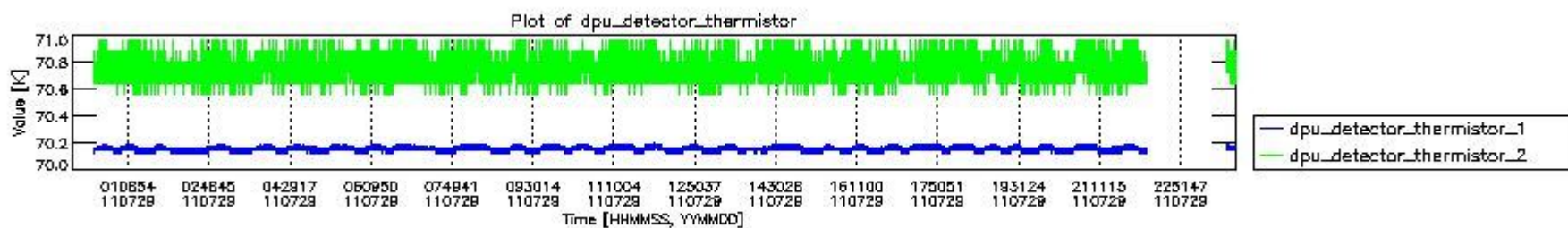
mipas\_daily\_report\_level0\_KSPT\_L0\_4504\_N\_20110729\_0.PNG



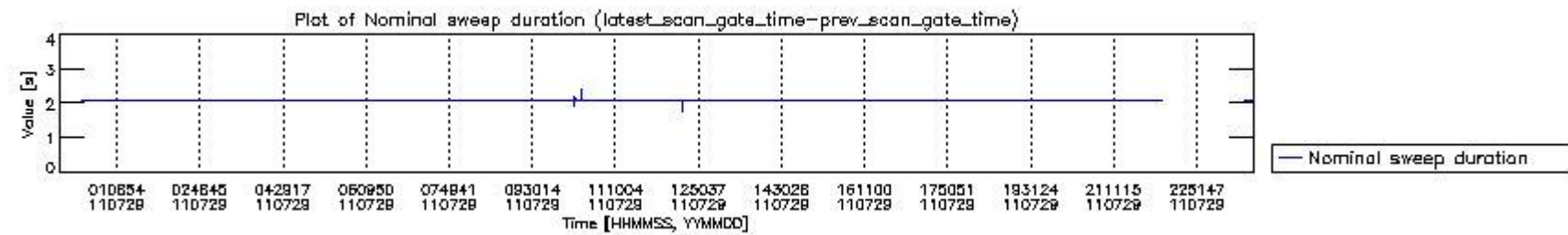
mipas\_daily\_report\_level0\_KSPT\_L0\_4504\_N\_20110729\_1.PNG



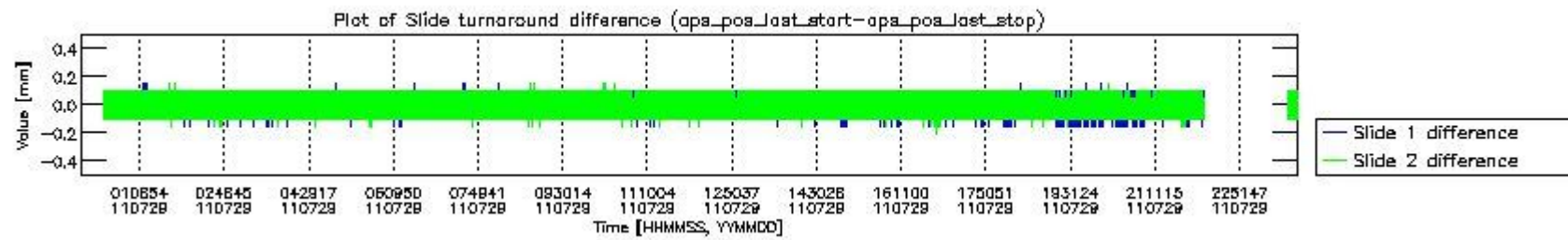
mipas\_daily\_report\_level0\_KSPT\_L0\_4504\_N\_20110729\_2.PNG



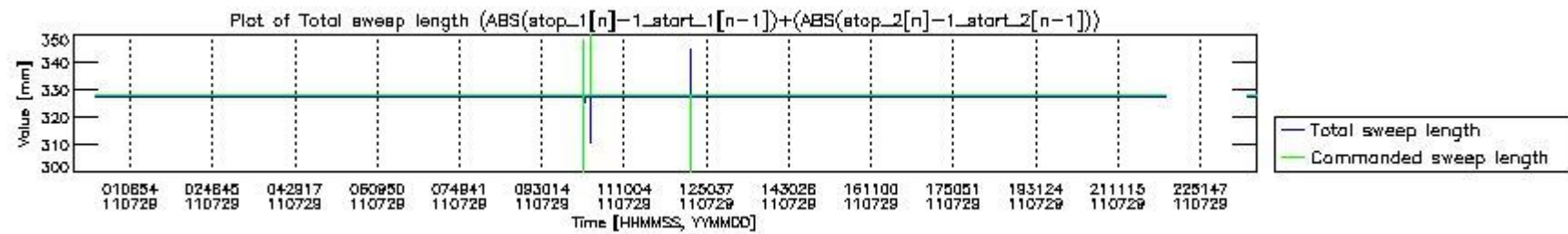
mipas\_daily\_report\_level0\_KSPT\_L0\_4504\_N\_20110729\_3.PNG



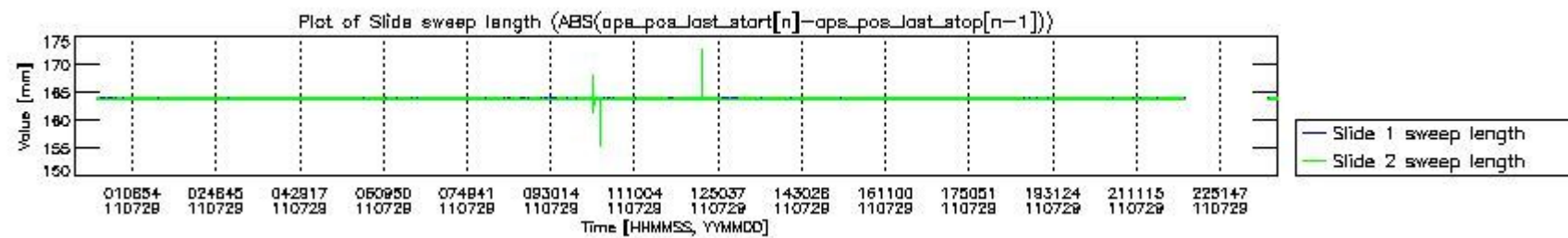
mipas\_daily\_report\_level0\_KSPT\_L0\_4504\_N\_20110729\_4.PNG



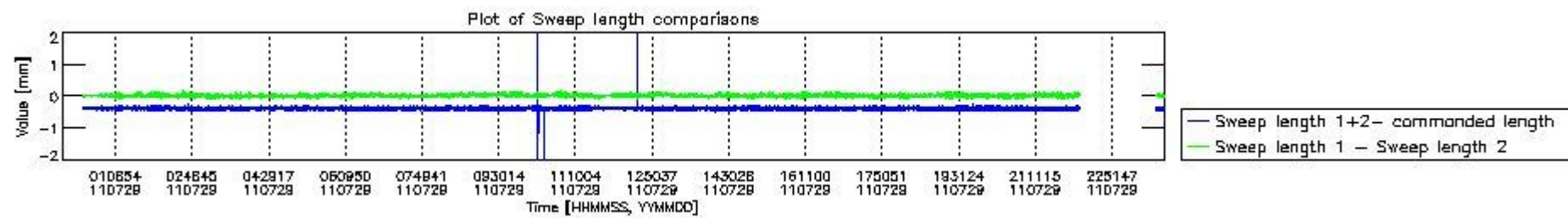
mipas\_daily\_report\_level0\_KSPT\_L0\_4504\_N\_20110729\_5.PNG



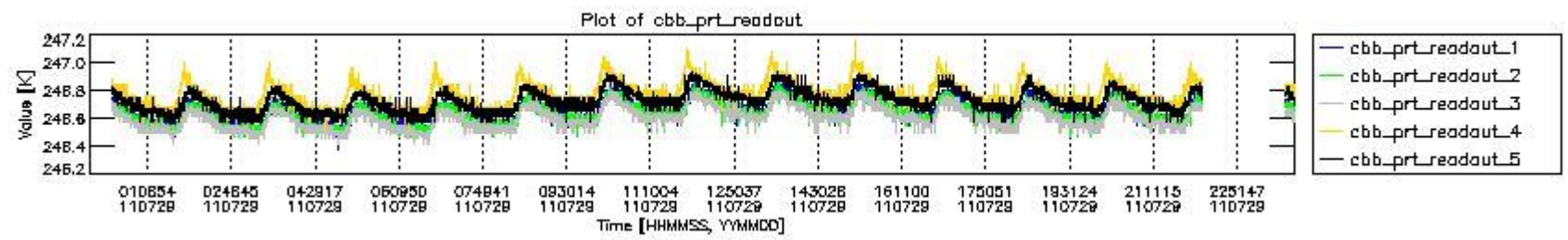
mipas\_daily\_report\_level0\_KSPT\_L0\_4504\_N\_20110729\_6.PNG



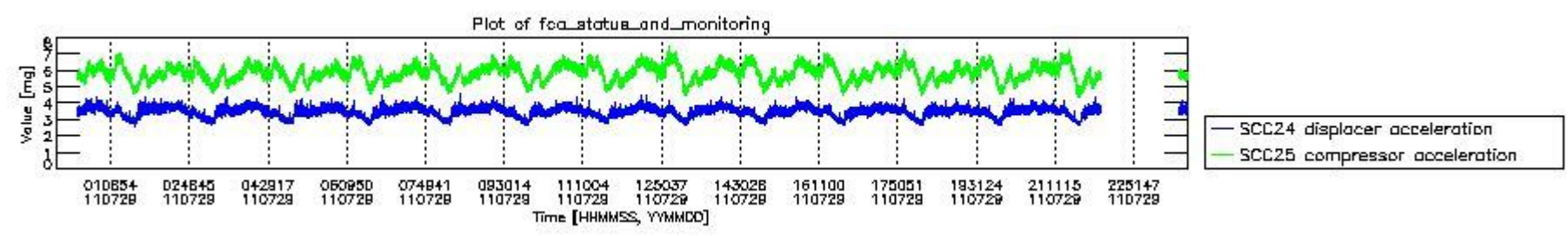
mipas\_daily\_report\_level0\_KSPT\_L0\_4504\_N\_20110729\_7.PNG



mipas\_daily\_report\_level0\_KSPT\_L0\_4504\_N\_20110729\_8.PNG



mipas\_daily\_report\_level0\_KSPT\_L0\_4504\_N\_20110729\_9.PNG

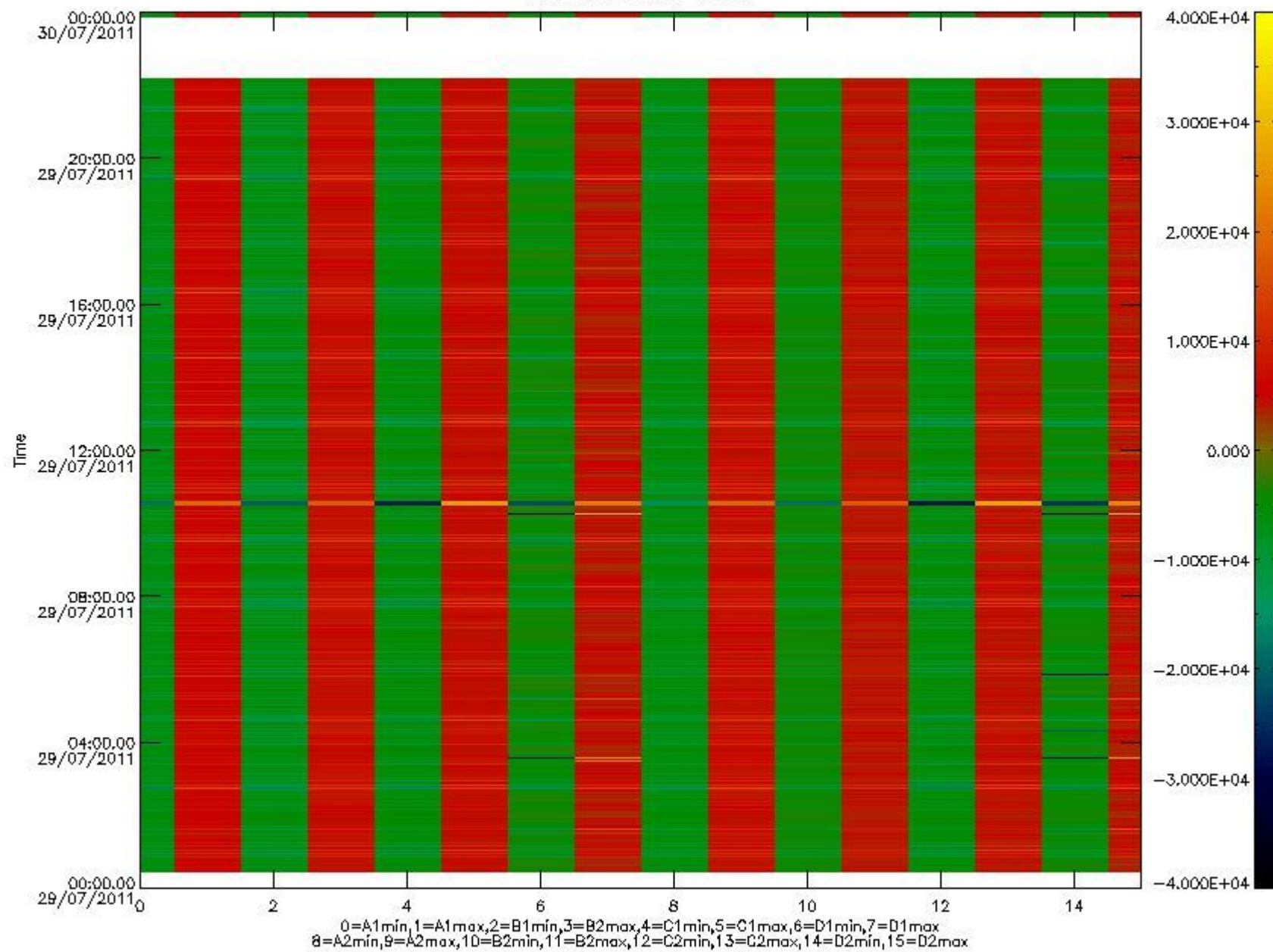


mipas\_daily\_report\_level0\_KSPT\_L0\_4504\_N\_20110729\_10.PNG

The following table shows channel statistics for all channels for this day.

Channel	Min	Max	ADC
A1	-19026	20353	16bit
B1	-21323	18281	16bit
C1	-27073	26976	16bit
D1	-32768	32767	16bit
A2	-16288	20107	16bit
B2	-19628	19216	16bit
C2	-28155	27762	16bit
D2	-32768	32767	16bit

MIPNLOP\_MIPSOUPAC\_aux\_fields\_igm\_cal, channel statistics plot  
Colour indicates value.



mipas\_daily\_report\_level0\_KSPT\_L0\_4504\_N\_20110729\_11.PNG

### 0.3 ADF monitoring

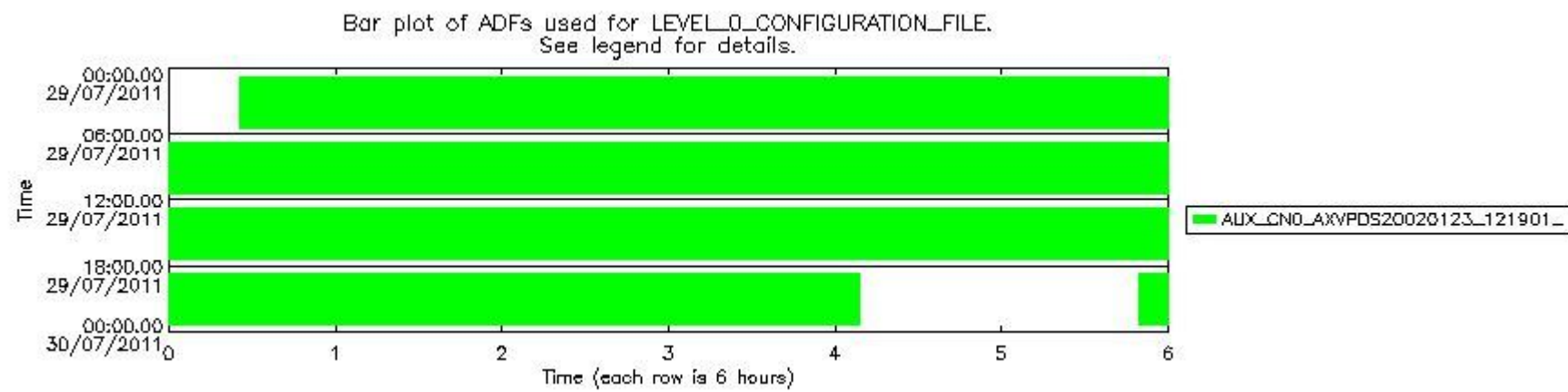
The use of ADFs is shown in two ways:

1. By means of two tables that can be used to find the ADF used for a specific product.
2. By means of plots that show changes in ADF using colours.

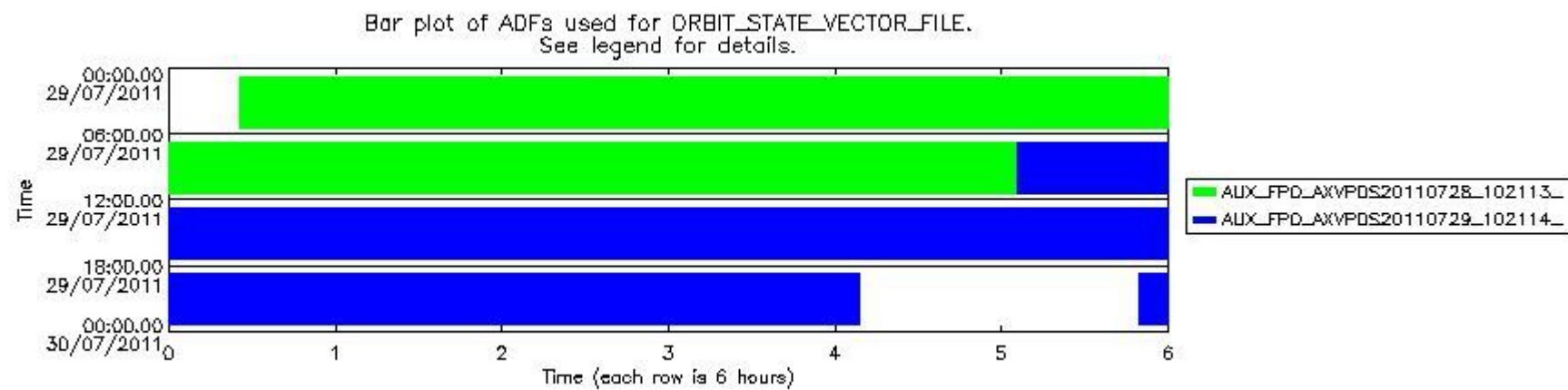
Number	ADF
0	AUX_CN0_AXVPDS20020123_121901_20020101_000000_20200101_000000
1	AUX_FPO_AXVPDS20110728_102113_20110727_183235_20110806_204621
2	AUX_FPO_AXVPDS20110729_102114_20110728_193604_20110807_200937

Number	Product name	#CN0	#FPO
--------	--------------	------	------

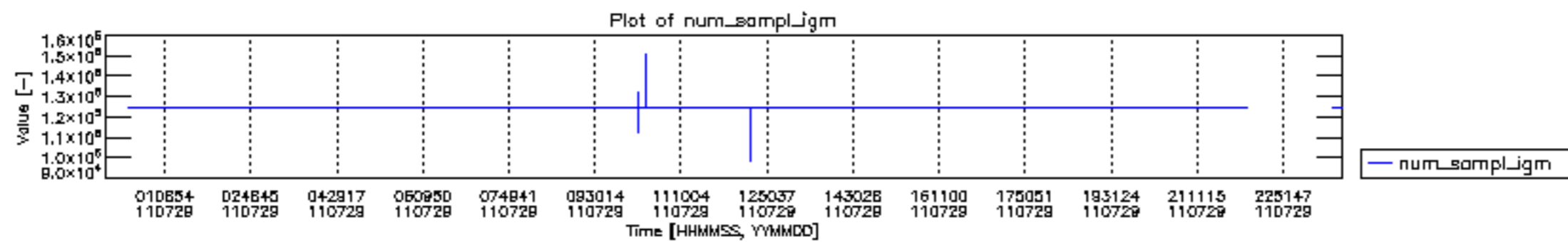
0	MIP_NL__0PNPDE20110729_002535_000058553105_00059_49211_9329.N1	0	1
1	MIP_NL__0PNPDE20110729_020212_000044753105_00060_49212_9330.N1	0	1
2	MIP_NL__0PNPDE20110729_031613_000061293105_00061_49213_9331.N1	0	1
3	MIP_NL__0PNPDE20110729_045749_000060793105_00062_49214_9332.N1	0	1
4	MIP_NL__0PNPDK20110729_063832_000041073105_00063_49215_5896.N1	0	1
5	MIP_NL__0PNPDK20110729_074626_000060943105_00064_49216_5897.N1	0	1
6	MIP_NL__0PNPDK20110729_092717_000059313105_00065_49217_5898.N1	0	1
7	MIP_NL__0PNPDK20110729_110525_000060643105_00066_49218_5899.N1	0	2
8	MIP_NL__0PNPDK20110729_124555_000059393105_00067_49219_5900.N1	0	2
9	MIP_NL__0PNPDK20110729_142410_000058433105_00068_49220_5901.N1	0	2
10	MIP_NL__0PNPDK20110729_160100_000058413105_00069_49221_5902.N1	0	2
11	MIP_NL__0PNPDK20110729_173728_000059373105_00070_49222_5903.N1	0	2
12	MIP_NL__0PNPDK20110729_191529_000060393105_00071_49223_5904.N1	0	2
13	MIP_NL__0PNPDE20110729_205436_000044523105_00072_49224_9333.N1	0	2
14	MIP_NL__0PNPDE20110729_234929_000059773105_00073_49225_9335.N1	0	2

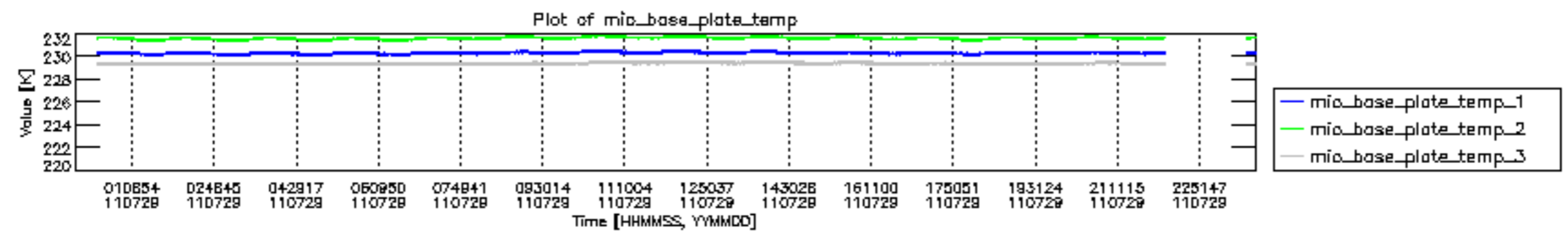


mipas\_daily\_report\_level0\_KSPT\_L0\_4504\_N\_20110729\_12.PNG

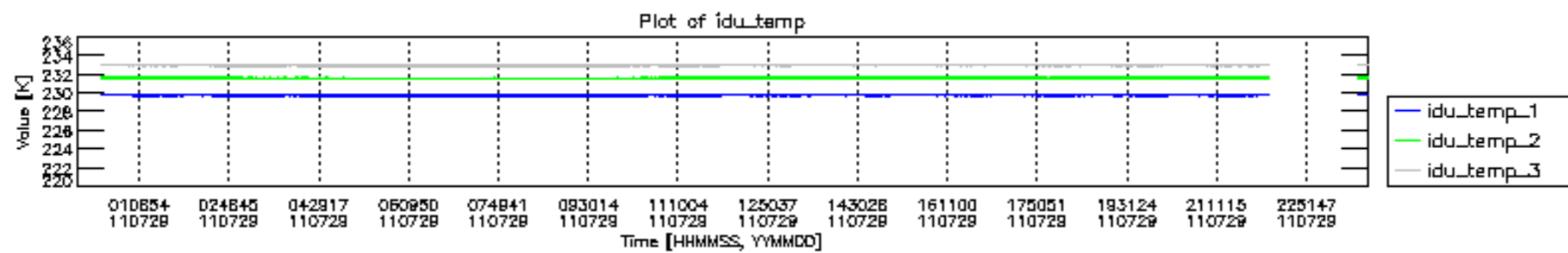


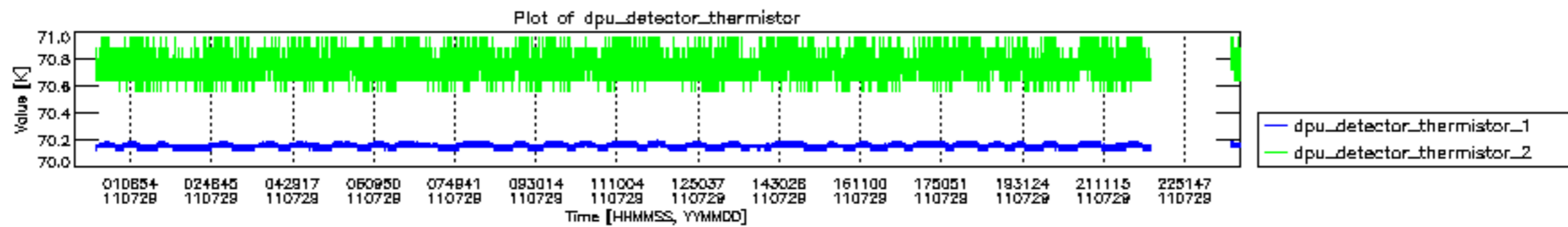
mipas\_daily\_report\_level0\_KSPT\_L0\_4504\_N\_20110729\_13.PNG

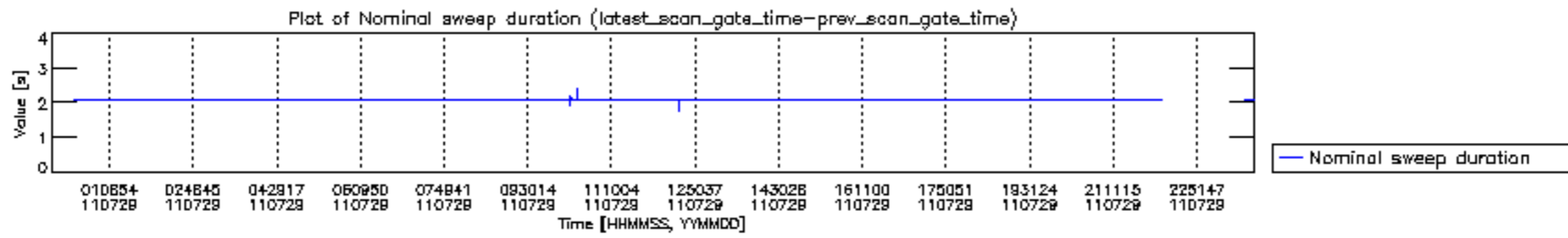


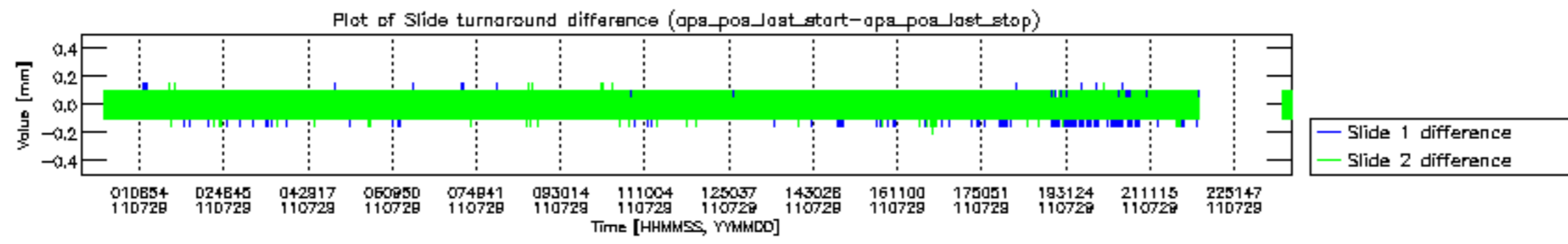


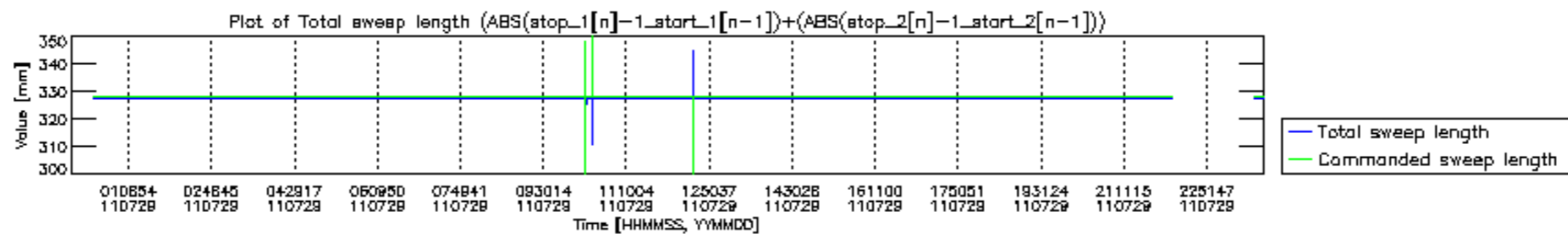


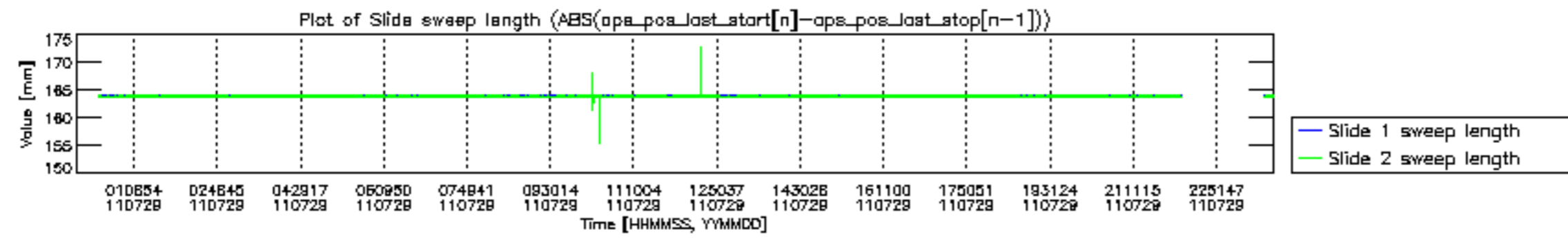


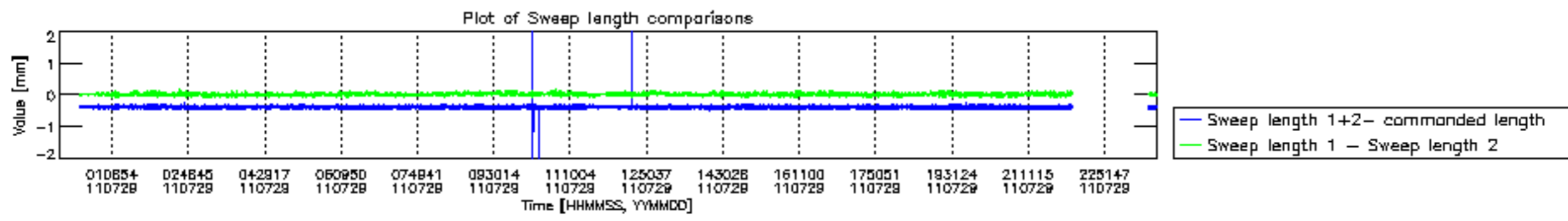


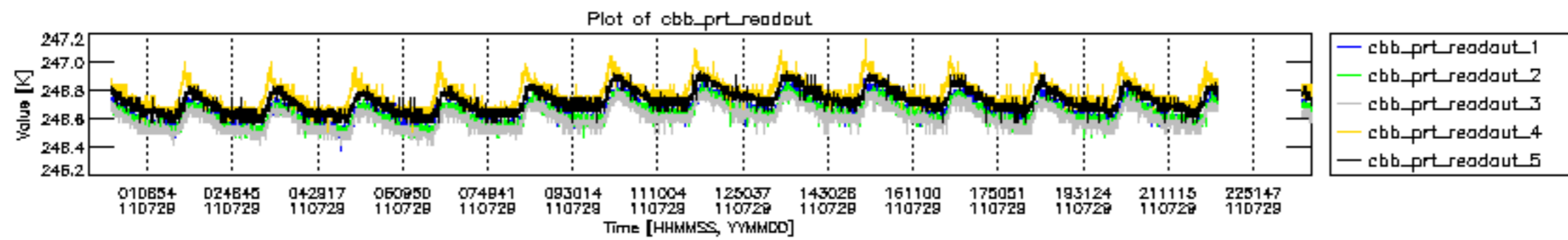




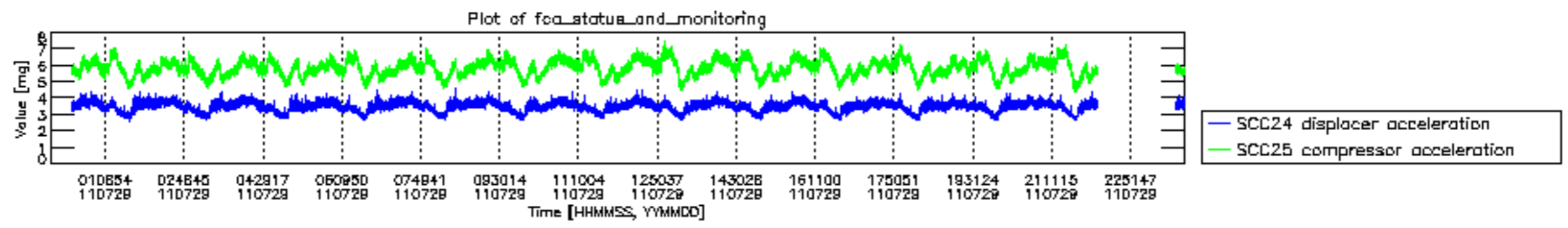












MIPNLOP\_MIPSOUPAC\_aux\_fields\_igm\_cal, channel statistics plot  
 Colour indicates value.

