

0. MIPAS Daily Report for level 0 products

[0.1 General Info](#)

[0.2 Instrument Operational Performance Parameters](#)

[0.3 ADF monitoring](#)

0.1 General Info

This report contains a daily analysis on parameters extracted from MIPAS level 0 data (The MIP_NL__0P product).

0.1.1 Report summary

The table below shows general characteristics of the data that are included into this report.

Item	Value
Report version	v1.6 08-11-2010
Time of report generation	01AUG2011 05:22:32
Data source version	KSPT_L0/4504-N
Processing scope for products	27JUL2011 00:00:00 to 28JUL2011 00:00:00
Start time of first product within scope	27JUL2011 01:36:16
Stop time of last product within scope	28JUL2011 01:03:47
Total number of level 0 products	15
Number of level 0 products with errors	0

0.1.2 Product Quality Indicators per product

The following table shows a summary for each product used in this report.

#	Product name	Start time	Stop time	Prod err	ISP err sign	ISP miss sign	ISP disc sign	rs sign
0	MIP_NL__0PNPDE20110727_013616_000044713105_00031_49183_9315.N1	27JUL2011 01:36:16	27JUL2011 02:50:46	0	0	0	0	0
1	MIP_NL__0PNPDE20110727_025013_000061083105_00032_49184_9316.N1	27JUL2011 02:50:13	27JUL2011 04:32:01	0	0	0	0	0
2	MIP_NL__0PNPDE20110727_043126_000060643105_00033_49185_9317.N1	27JUL2011 04:31:26	27JUL2011 06:12:30	0	0	0	0	0
3	MIP_NL__0PNPDK20110727_061157_000040673105_00034_49186_5879.N1	27JUL2011 06:11:57	27JUL2011 07:19:44	0	0	0	0	0
4	MIP_NL__0PNPDK20110727_071908_000061383105_00035_49187_5880.N1	27JUL2011 07:19:08	27JUL2011 09:01:26	0	0	0	0	0
5	MIP_NL__0PNPDK20110727_090042_000059923105_00036_49188_5881.N1	27JUL2011 09:00:42	27JUL2011 10:40:34	0	0	0	0	0
6	MIP_NL__0PNPDK20110727_103950_000059403105_00037_49189_5882.N1	27JUL2011 10:39:50	27JUL2011 12:18:51	0	0	0	0	0
7	MIP_NL__0PNPDK20110727_121805_000059643105_00038_49190_5883.N1	27JUL2011 12:18:05	27JUL2011 13:57:29	0	0	0	0	0
8	MIP_NL__0PNPDK20110727_135656_000058893105_00039_49191_5884.N1	27JUL2011 13:56:56	27JUL2011 15:35:05	0	0	0	0	0
9	MIP_NL__0PNPDK20110727_153431_000058283105_00040_49192_5885.N1	27JUL2011 15:34:31	27JUL2011 17:11:40	0	0	0	0	0
10	MIP_NL__0PNPDK20110727_171043_000060233105_00041_49193_5886.N1	27JUL2011 17:10:43	27JUL2011 18:51:06	0	0	0	0	0
11	MIP_NL__0PNPDK20110727_185009_000059893105_00042_49194_5887.N1	27JUL2011 18:50:09	27JUL2011 20:29:59	0	0	0	0	0
12	MIP_NL__0PNPDE20110727_202819_000043703105_00043_49195_9318.N1	27JUL2011 20:28:19	27JUL2011 21:41:09	0	0	0	0	0
13	MIP_NL__0PNPDE20110727_214002_000061563105_00043_49195_9319.N1	27JUL2011 21:40:02	27JUL2011 23:22:38	0	0	0	0	0
14	MIP_NL__0PNPDE20110727_232138_000061293105_00044_49196_9320.N1	27JUL2011 23:21:38	28JUL2011 01:03:47	0	0	0	0	0

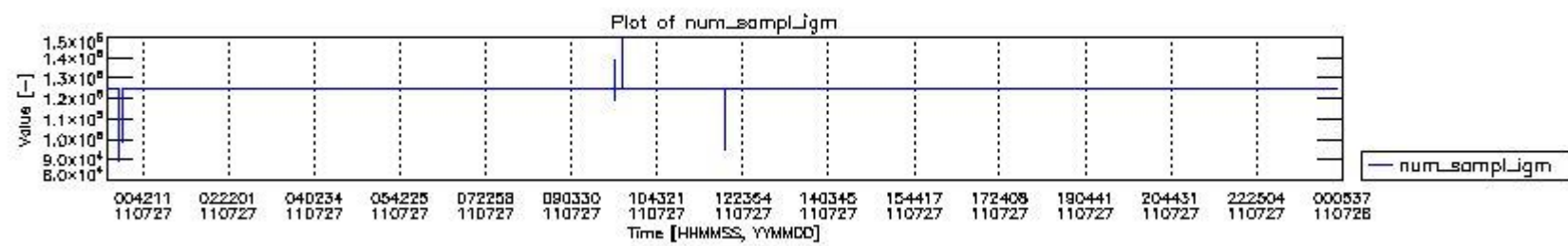
0.2 Instrument Operational Performance Parameters

The following plots give an overview of various instrument parameters for this day. The instrument parameters are part of the auxiliary data field within the source packets of the MIP_NL__0P product. The auxiliary data is normally included twice per interferogram. Note that only the first packet is currently included in monitoring.

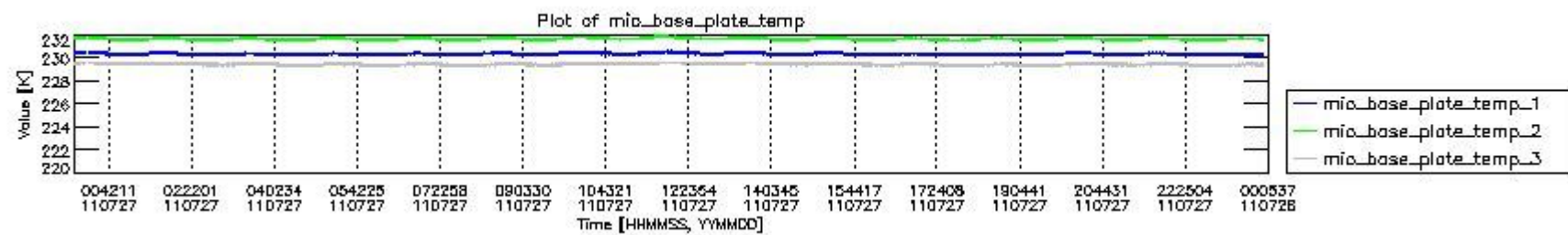
The following table shows the counts of various interferogram number of samples

Number of igm samples	Count [#]	Count [%]
89732	1	0.0024123124
95232	1	0.0024123124
97200	1	0.0024123124

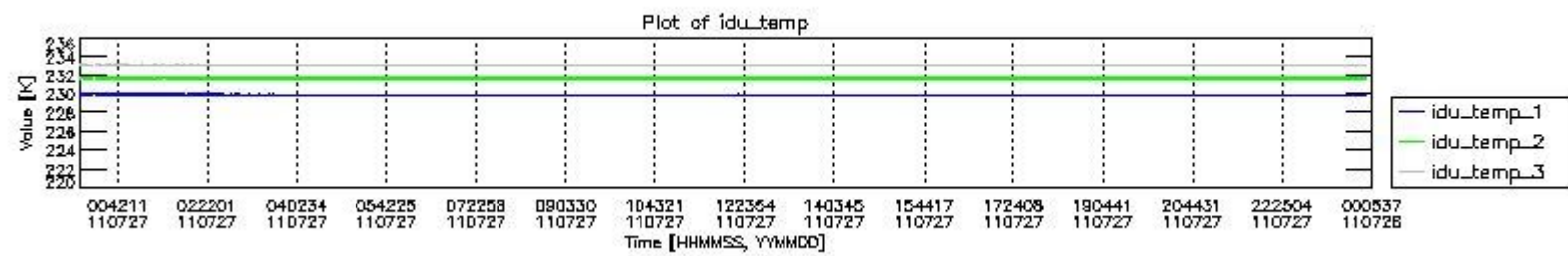
98624	1	0.0024123124
99950	1	0.0024123124
117332	1	0.0024123124
118981	1	0.0024123124
120082	1	0.0024123124
122952	1	0.0024123124
123876	1	0.0024123124
124800	39073	94.256284
124803	2366	5.7075312
127308	1	0.0024123124
133294	1	0.0024123124
139113	1	0.0024123124
147440	1	0.0024123124
149948	1	0.0024123124



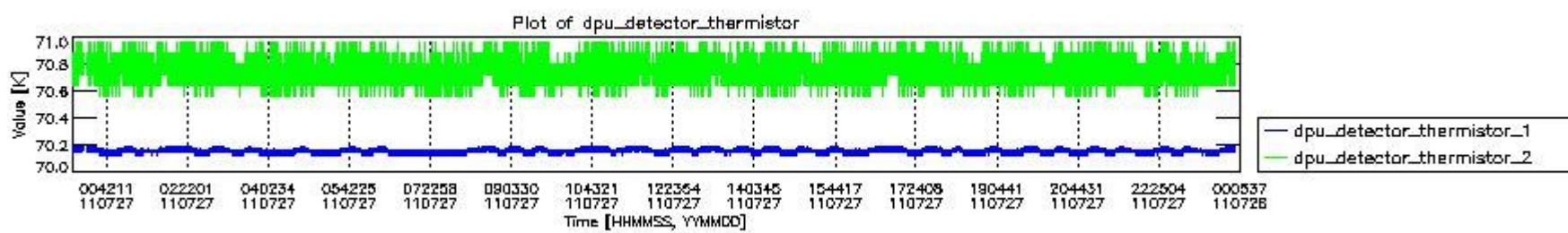
mipas_daily_report_level0_KSPT_L0_4504_N_20110727_0.PNG



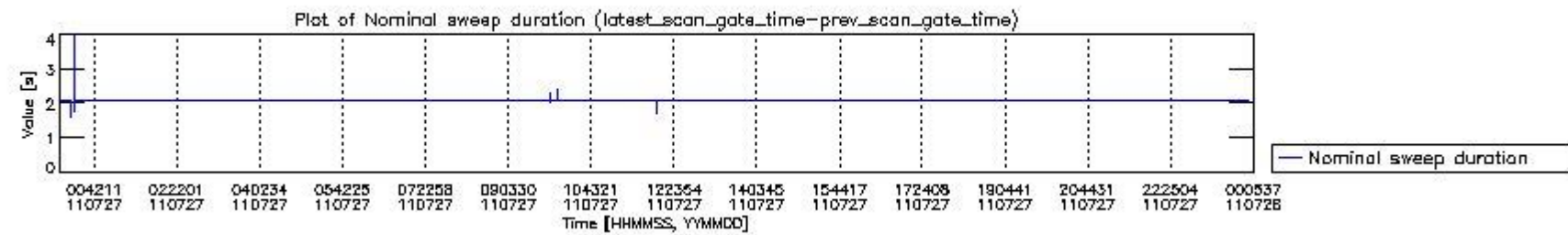
mipas_daily_report_level0_KSPT_L0_4504_N_20110727_1.PNG



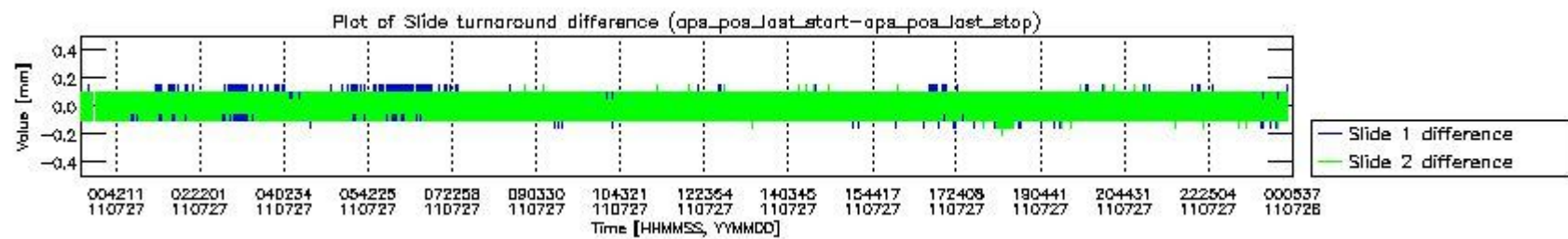
mipas_daily_report_level0_KSPT_L0_4504_N_20110727_2.PNG



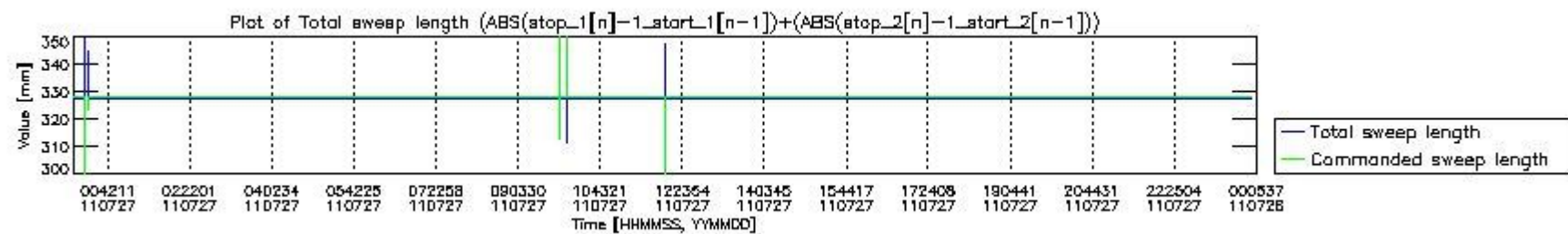
mipas_daily_report_level0_KSPT_L0_4504_N_20110727_3.PNG



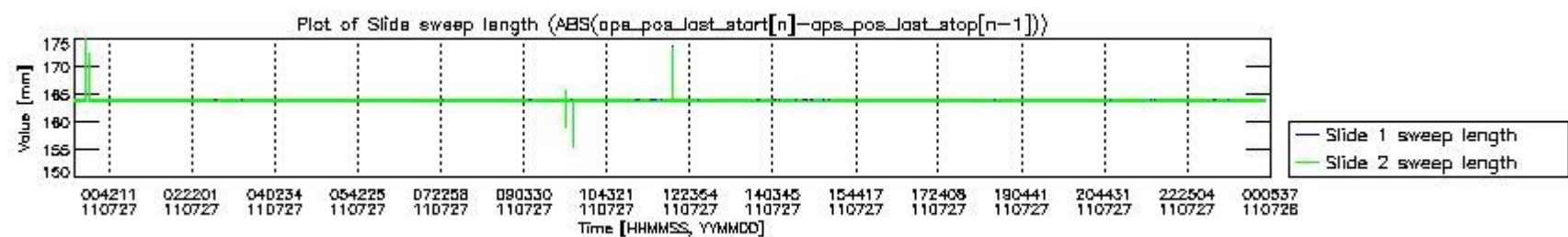
mipas_daily_report_level0_KSPT_L0_4504_N_20110727_4.PNG



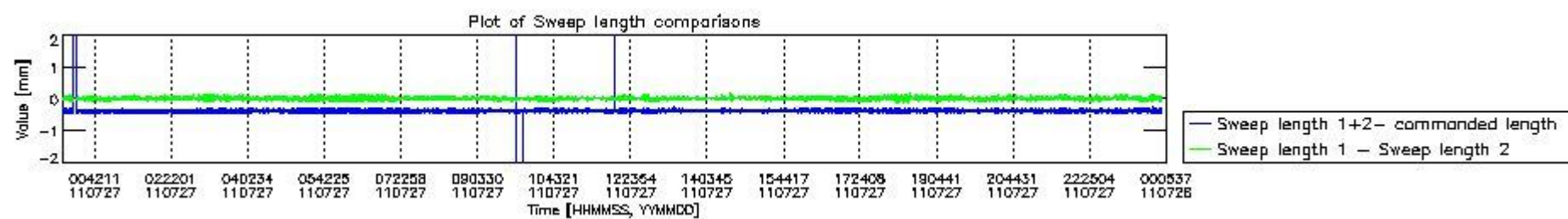
mipas_daily_report_level0_KSPT_L0_4504_N_20110727_5.PNG



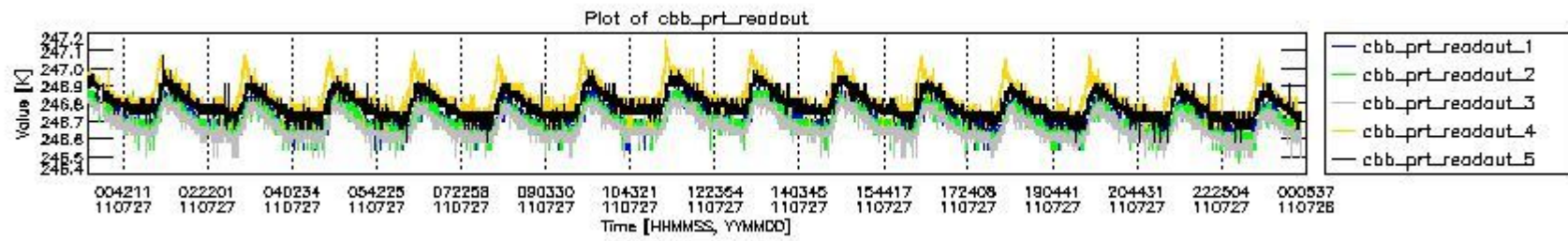
mipas_daily_report_level0_KSPT_L0_4504_N_20110727_6.PNG



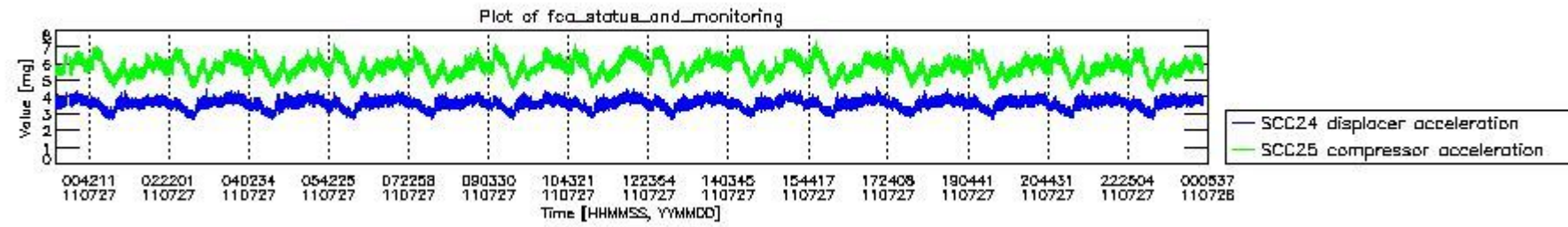
mipas_daily_report_level0_KSPT_L0_4504_N_20110727_7.PNG



mipas_daily_report_level0_KSPT_L0_4504_N_20110727_8.PNG



mipas_daily_report_level0_KSPT_L0_4504_N_20110727_9.PNG

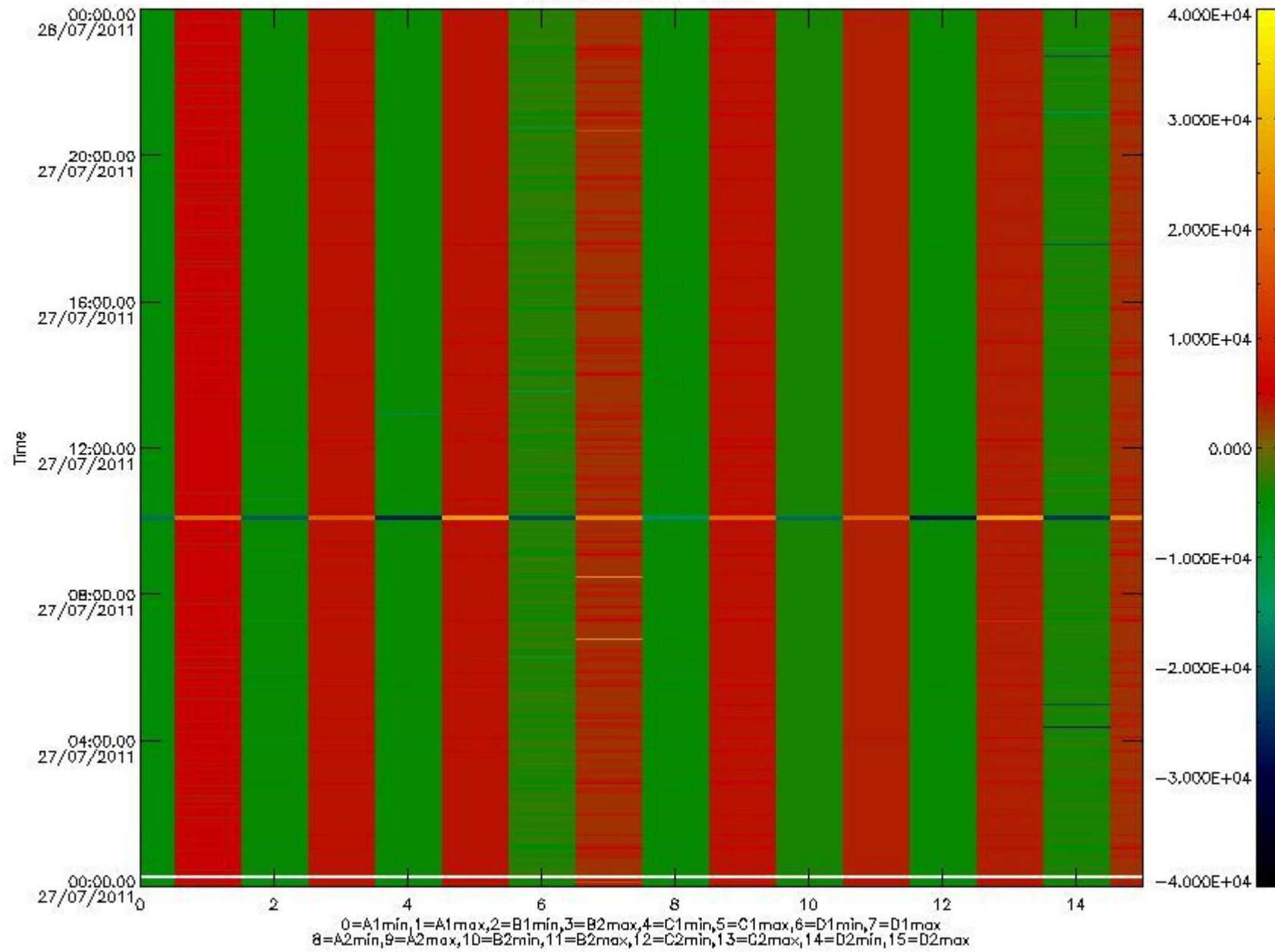


mipas_daily_report_level0_KSPT_L0_4504_N_20110727_10.PNG

The following table shows channel statistics for all channels for this day.

Channel	Min	Max	ADC
A1	-18639	19770	16bit
B1	-21359	18295	16bit
C1	-27098	27066	16bit
D1	-23085	32767	16bit
A2	-16127	19969	16bit
B2	-19667	19265	16bit
C2	-28154	27858	16bit
D2	-32768	25202	16bit

MIPNLOP_MIPSOUPAC_aux_fields_igm_cal, channel statistics plot
Colour indicates value.



mipas_daily_report_level0_KSPT_L0_4504_N_20110727_11.PNG

0.3 ADF monitoring

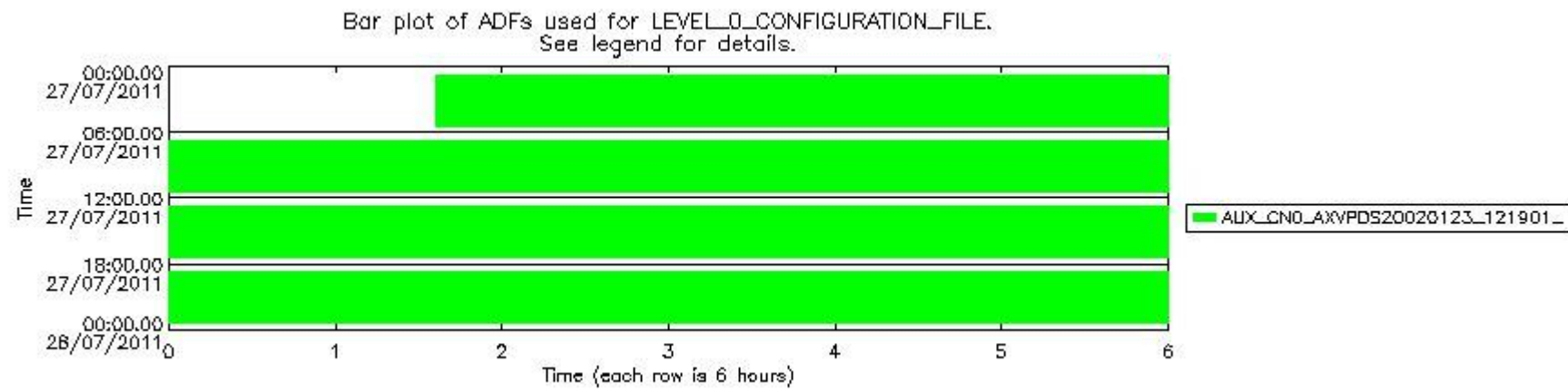
The use of ADFs is shown in two ways:

1. By means of two tables that can be used to find the ADF used for a specific product.
2. By means of plots that show changes in ADF using colours.

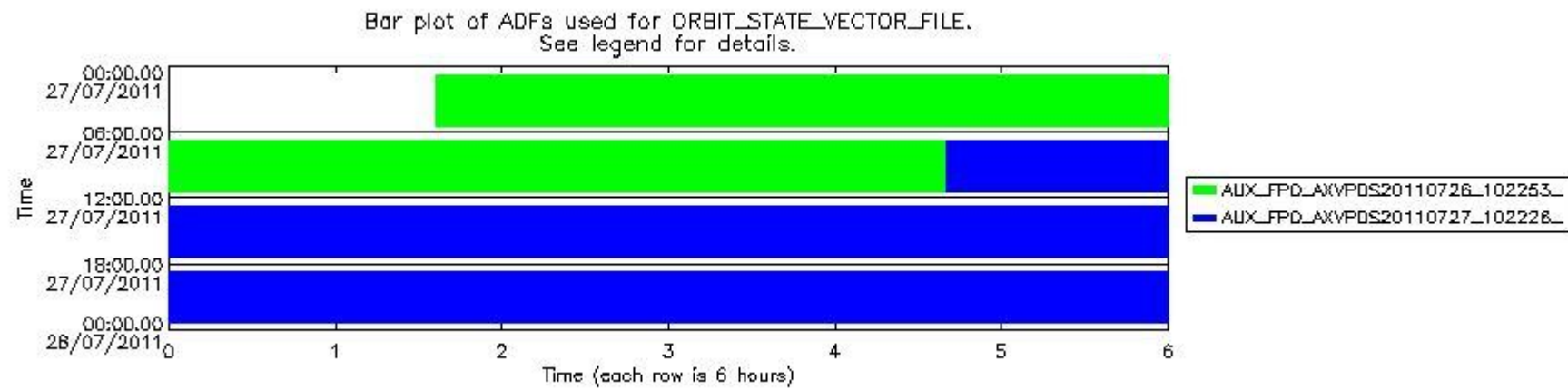
Number	ADF
0	AUX_CN0_AXVPDS20020123_121901_20020101_000000_20200101_000000
1	AUX_FPO_AXVPDS20110726_102253_20110725_194603_20110804_201936
2	AUX_FPO_AXVPDS20110727_102226_20110726_190919_20110805_212306

Number	Product name	#CN0	#FPO
--------	--------------	------	------

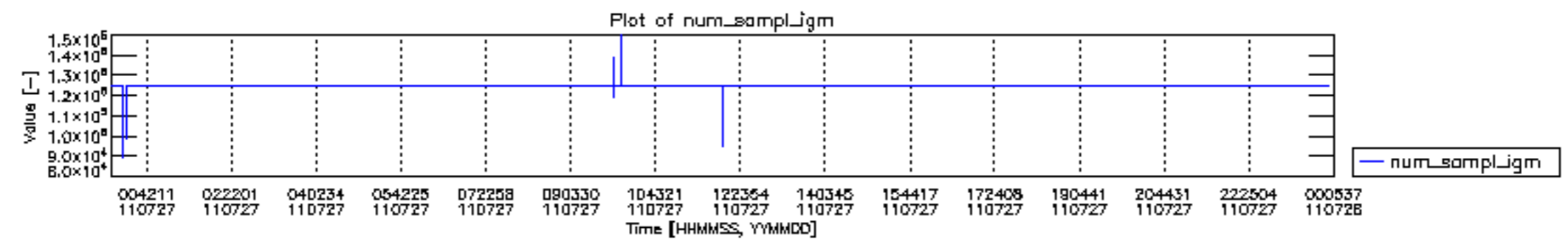
0	MIP_NL__0PNPDE20110727_013616_000044713105_00031_49183_9315.N1	0	1
1	MIP_NL__0PNPDE20110727_025013_000061083105_00032_49184_9316.N1	0	1
2	MIP_NL__0PNPDE20110727_043126_000060643105_00033_49185_9317.N1	0	1
3	MIP_NL__0PNPDK20110727_061157_000040673105_00034_49186_5879.N1	0	1
4	MIP_NL__0PNPDK20110727_071908_000061383105_00035_49187_5880.N1	0	1
5	MIP_NL__0PNPDK20110727_090042_000059923105_00036_49188_5881.N1	0	1
6	MIP_NL__0PNPDK20110727_103950_000059403105_00037_49189_5882.N1	0	2
7	MIP_NL__0PNPDK20110727_121805_000059643105_00038_49190_5883.N1	0	2
8	MIP_NL__0PNPDK20110727_135656_000058893105_00039_49191_5884.N1	0	2
9	MIP_NL__0PNPDK20110727_153431_000058283105_00040_49192_5885.N1	0	2
10	MIP_NL__0PNPDK20110727_171043_000060233105_00041_49193_5886.N1	0	2
11	MIP_NL__0PNPDK20110727_185009_000059893105_00042_49194_5887.N1	0	2
12	MIP_NL__0PNPDE20110727_202819_000043703105_00043_49195_9318.N1	0	2
13	MIP_NL__0PNPDE20110727_214002_000061563105_00043_49195_9319.N1	0	2
14	MIP_NL__0PNPDE20110727_232138_000061293105_00044_49196_9320.N1	0	2

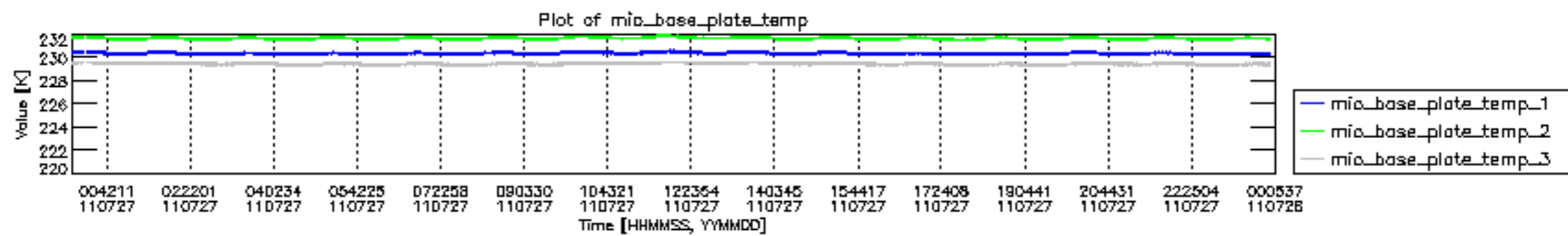


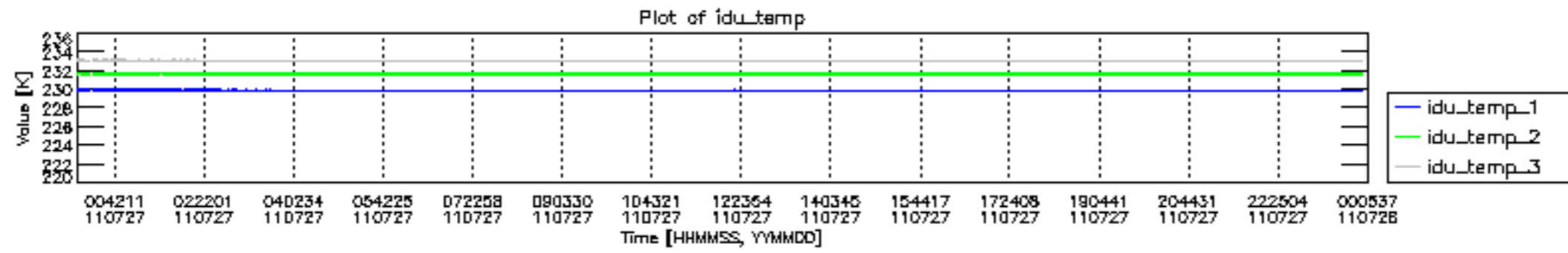
mipas_daily_report_level0_KSPT_L0_4504_N_20110727_12.PNG

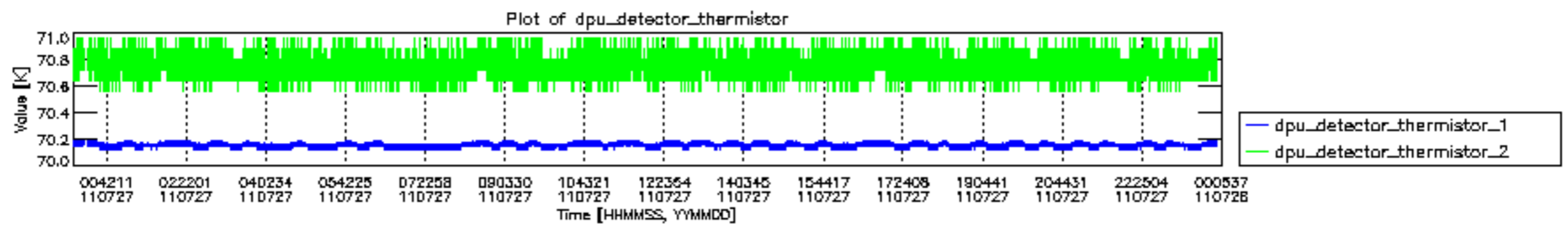


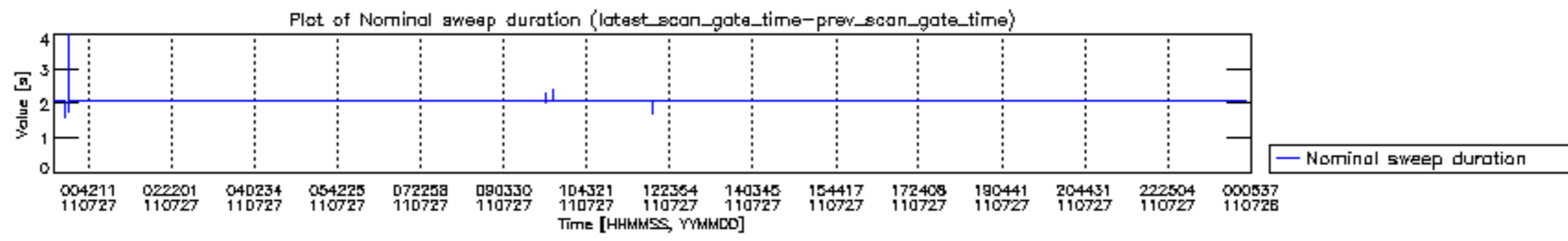
mipas_daily_report_level0_KSPT_L0_4504_N_20110727_13.PNG

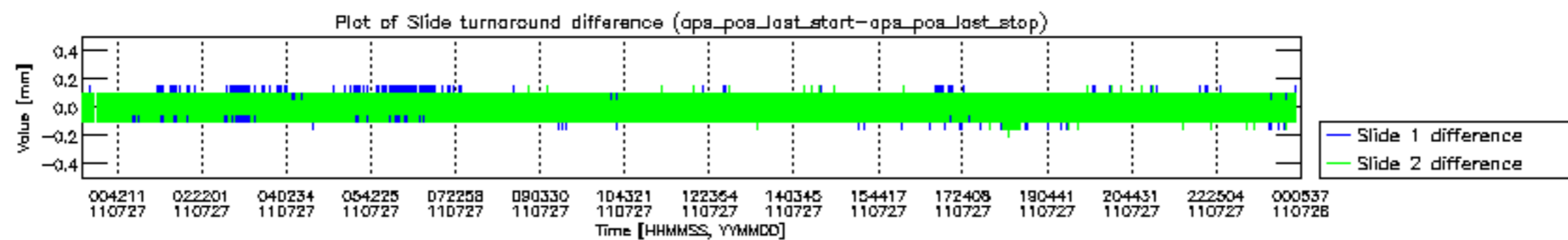


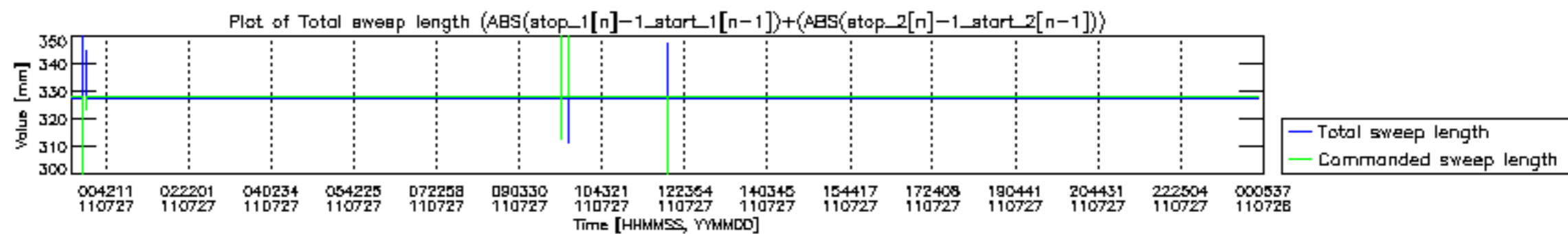


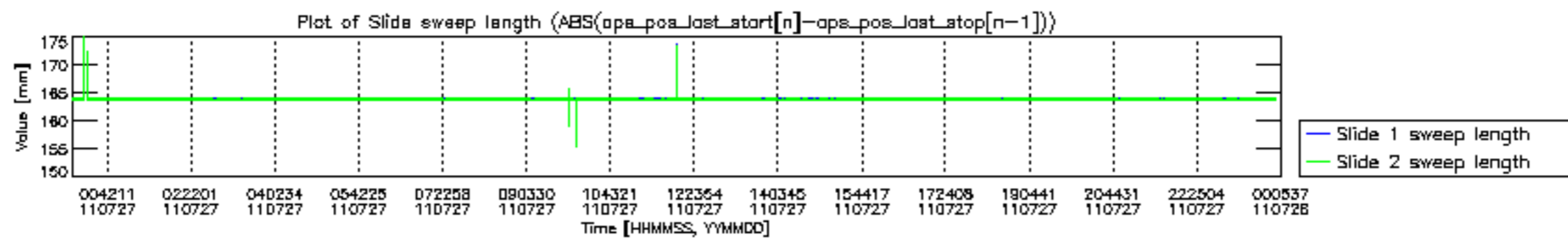


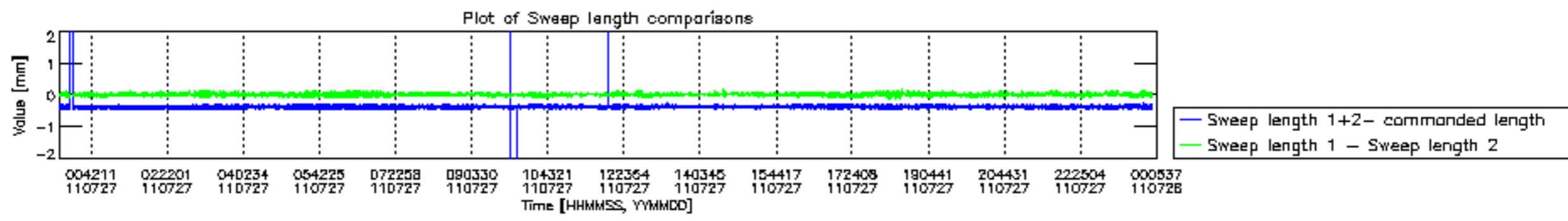


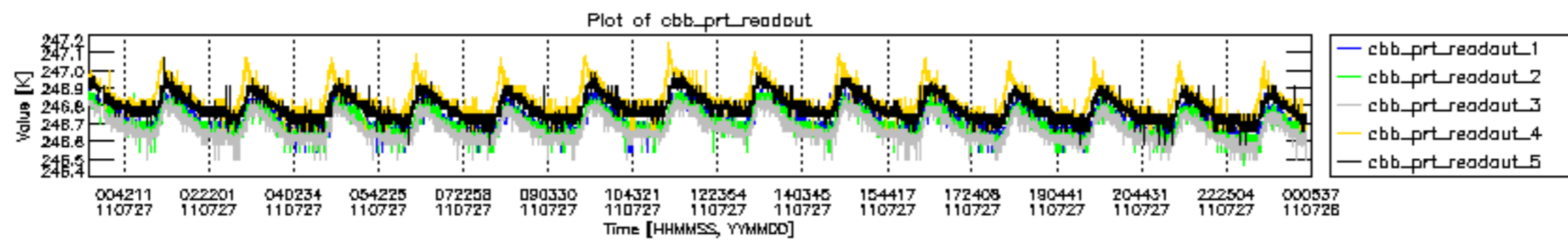


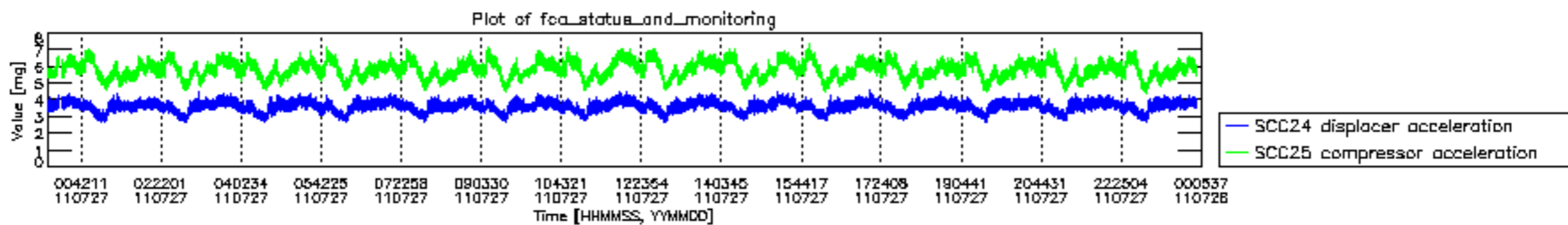












MIPNLOP_MIPSOUPAC_aux_fields_igm_cal, channel statistics plot
 Colour indicates value.

