

0. MIPAS Daily Report for level 0 products

[0.1 General Info](#)

[0.2 Instrument Operational Performance Parameters](#)

[0.3 ADF monitoring](#)

0.1 General Info

This report contains a daily analysis on parameters extracted from MIPAS level 0 data (The MIP_NL__0P product).

0.1.1 Report summary

The table below shows general characteristics of the data that are included into this report.

Item	Value
Report version	v1.6 08-11-2010
Time of report generation	14JUL2011 05:24:27
Data source version	KSPT_L0/4504-N
Processing scope for products	09JUL2011 00:00:00 to 10JUL2011 00:00:00
Start time of first product within scope	09JUL2011 00:58:54
Stop time of last product within scope	10JUL2011 00:21:59
Total number of level 0 products	15
Number of level 0 products with errors	1

0.1.2 Product Quality Indicators per product

The following table shows a summary for each product used in this report.

#	Product name	Start time	Stop time	Prod err	ISP err sign	ISP miss sign	ISP disc sign	rs sign
0	MIP_NL__0PNPDE20110709_005854_000102013104_00203_48924_9197.N1	09JUL2011 00:58:54	09JUL2011 03:48:55	0	0	0	0	0
1	MIP_NL__0PNPDE20110709_034822_000062113104_00205_48926_9198.N1	09JUL2011 03:48:22	09JUL2011 05:31:53	0	0	0	0	0
2	MIP_NL__0PNPDE20110709_053117_000060753104_00206_48927_9199.N1	09JUL2011 05:31:17	09JUL2011 07:12:32	0	0	0	0	0
3	MIP_NL__0PNPDK20110709_071159_000040013104_00207_48928_5708.N1	09JUL2011 07:11:59	09JUL2011 08:18:39	0	0	0	0	0
4	MIP_NL__0PNPDK20110709_081806_000060833104_00208_48929_5709.N1	09JUL2011 08:18:06	09JUL2011 09:59:29	0	0	0	0	0
5	MIP_NL__0PNPDK20110709_095845_000059373104_00209_48930_5710.N1	09JUL2011 09:58:45	09JUL2011 11:37:42	0	0	0	0	0
6	MIP_NL__0PNPDK20110709_113656_000060273104_00210_48931_5711.N1	09JUL2011 11:36:56	09JUL2011 13:17:23	0	0	0	0	0
7	MIP_NL__0PNPDK20110709_131639_000059523104_00211_48932_5712.N1	09JUL2011 13:16:39	09JUL2011 14:55:51	0	0	0	0	0
8	MIP_NL__0PNPDK20110709_145517_000059203104_00212_48933_5713.N1	09JUL2011 14:55:17	09JUL2011 16:33:58	0	0	0	0	0
9	MIP_NL__0PNPDK20110709_163324_000058263104_00213_48934_5717.N1	09JUL2011 16:33:24	09JUL2011 18:10:31	1	1	0	0	0
10	MIP_NL__0PNPDK20110709_172626_000026453104_00213_48934_5715.N1	09JUL2011 17:26:26	09JUL2011 18:10:31	0	0	0	0	0
11	MIP_NL__0PNPDK20110709_180932_000059793104_00214_48935_5716.N1	09JUL2011 18:09:32	09JUL2011 19:49:11	0	0	0	0	0
12	MIP_NL__0PNPDE20110709_194737_000041553104_00215_48936_9200.N1	09JUL2011 19:47:37	09JUL2011 20:56:52	0	0	0	0	0
13	MIP_NL__0PNPDE20110709_205554_000064033104_00215_48936_9201.N1	09JUL2011 20:55:54	09JUL2011 22:42:37	0	0	0	0	0
14	MIP_NL__0PNPDE20110709_224134_000060253104_00216_48937_9202.N1	09JUL2011 22:41:34	10JUL2011 00:21:59	0	0	0	0	0

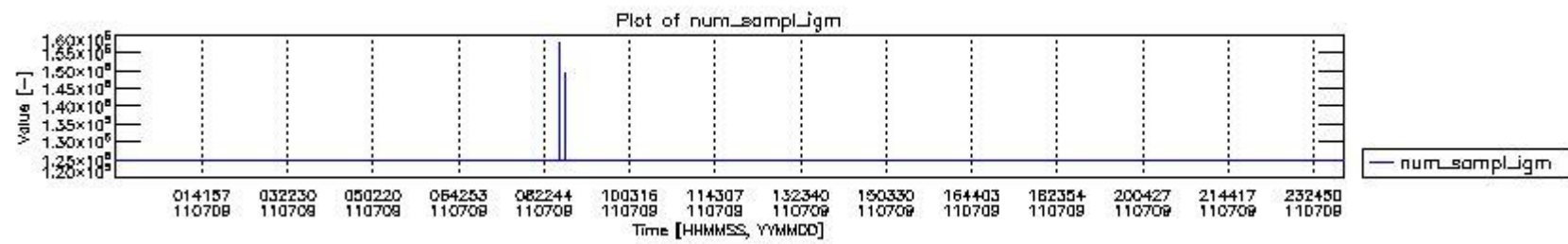
0.2 Instrument Operational Performance Parameters

The following plots give an overview of various instrument parameters for this day. The instrument parameters are part of the auxiliary data field within the source packets of the MIP_NL__0P product. The auxiliary data is normally included twice per interferogram. Note that only the first packet is currently included in monitoring.

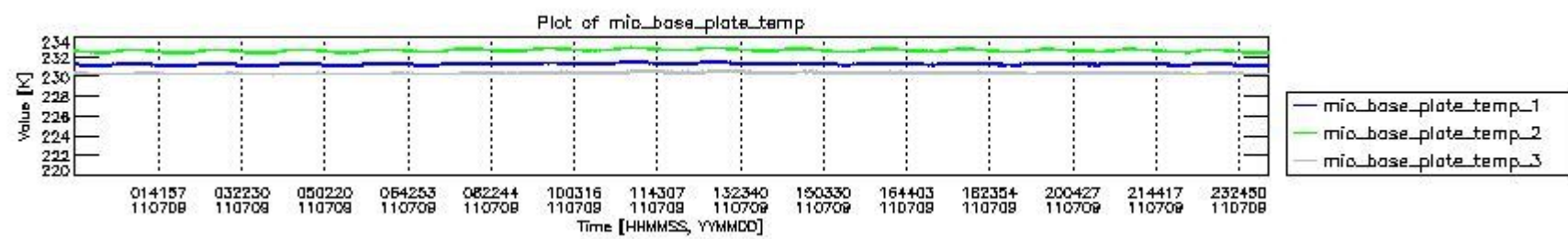
The following table shows the counts of various interferogram number of samples

Number of igm samples	Count [#]	Count [%]
124800	38455	92.406584
124803	3154	7.5789980
127085	1	0.0024029797

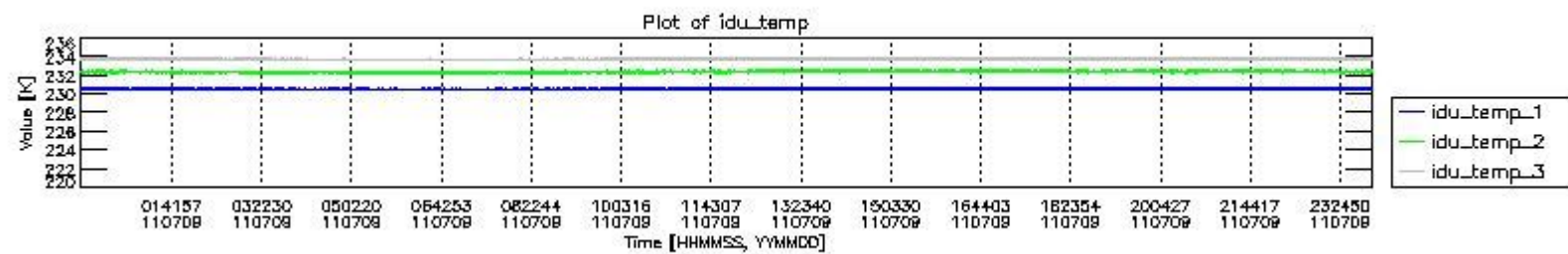
131248	1	0.0024029797
147217	1	0.0024029797
149502	1	0.0024029797
151380	1	0.0024029797
157828	1	0.0024029797



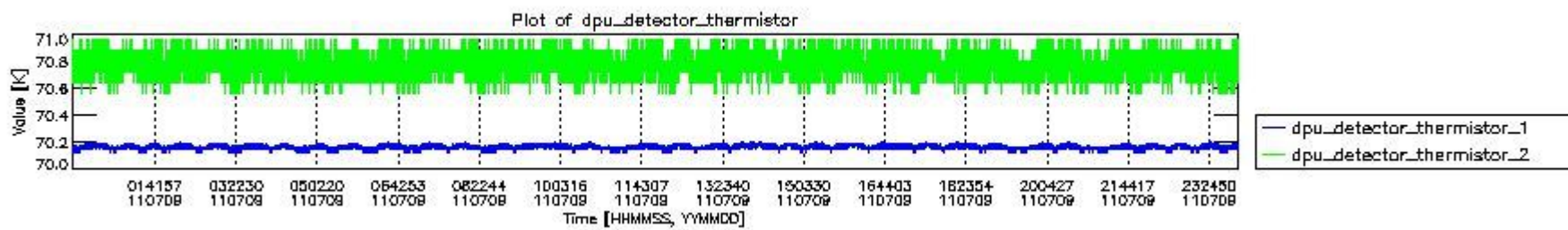
mipas_daily_report_level0_KSPT_L0_4504_N_20110709_0.PNG



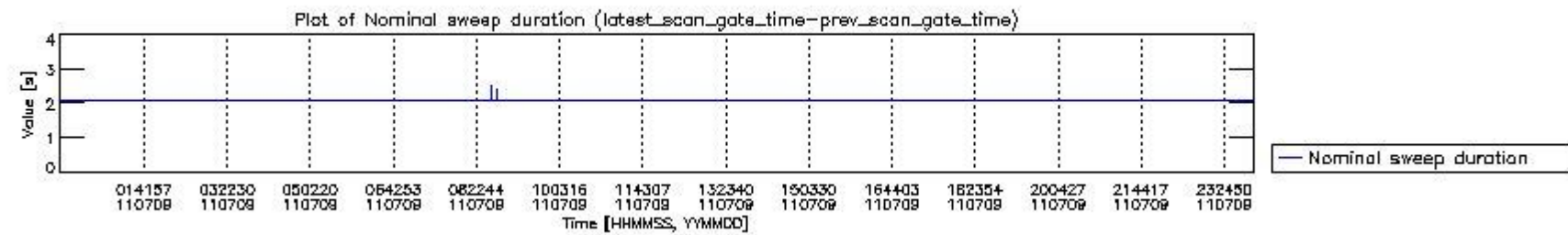
mipas_daily_report_level0_KSPT_L0_4504_N_20110709_1.PNG



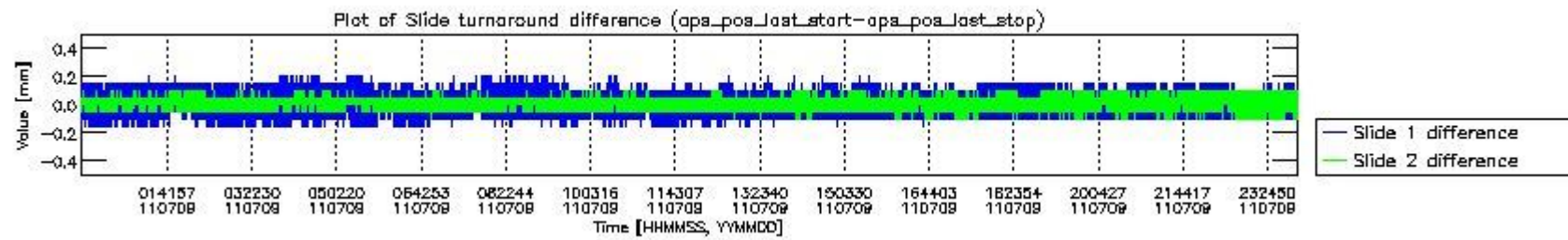
mipas_daily_report_level0_KSPT_L0_4504_N_20110709_2.PNG



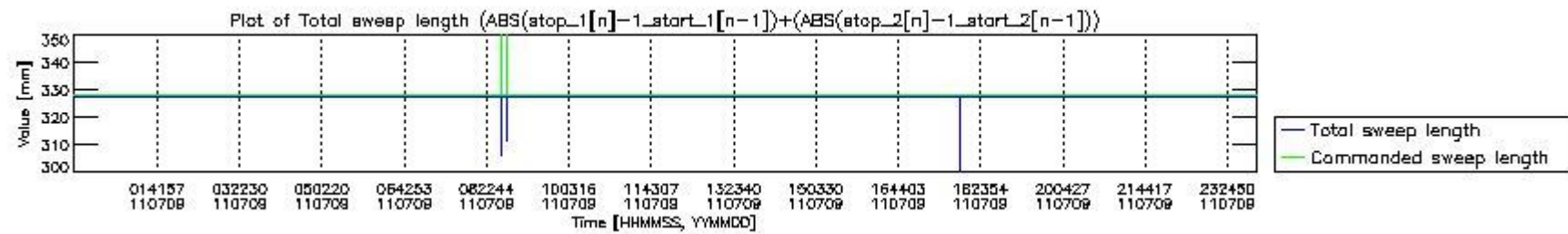
mipas_daily_report_level0_KSPT_L0_4504_N_20110709_3.PNG



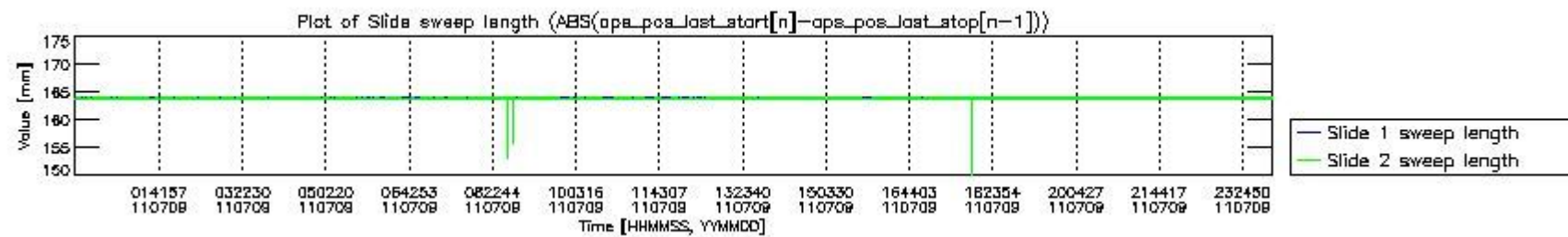
mipas_daily_report_level0_KSPT_L0_4504_N_20110709_4.PNG



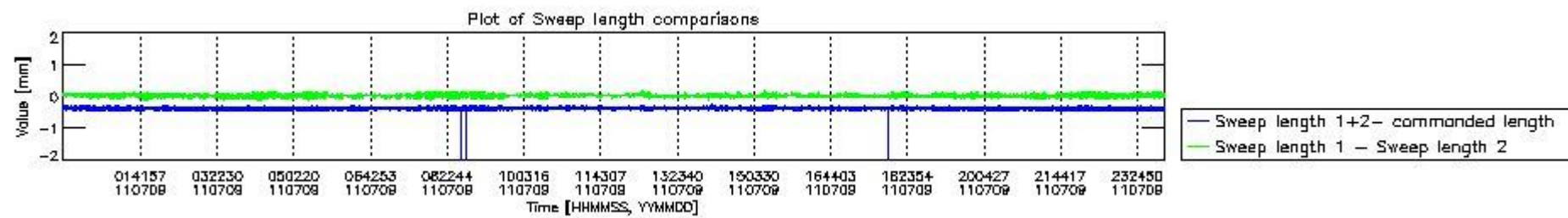
mipas_daily_report_level0_KSPT_L0_4504_N_20110709_5.PNG



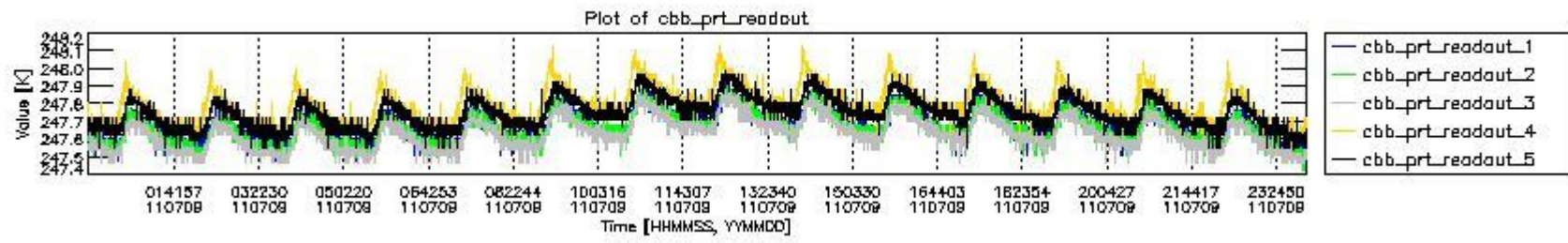
mipas_daily_report_level0_KSPT_L0_4504_N_20110709_6.PNG



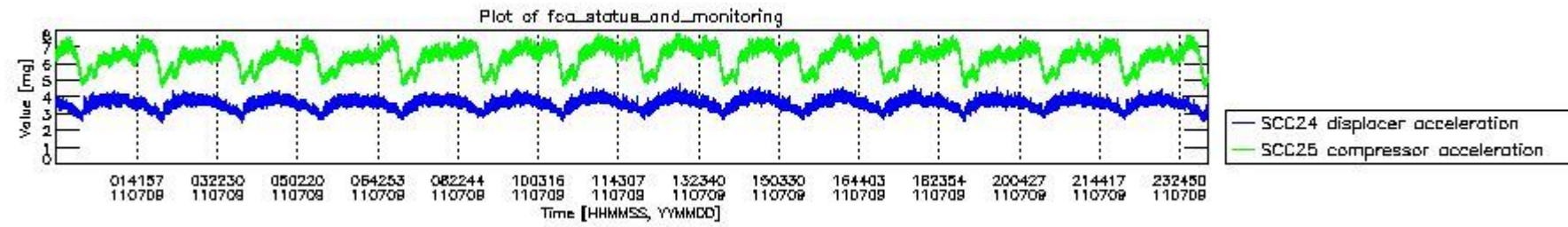
mipas_daily_report_level0_KSPT_L0_4504_N_20110709_7.PNG



mipas_daily_report_level0_KSPT_L0_4504_N_20110709_8.PNG



mipas_daily_report_level0_KSPT_L0_4504_N_20110709_9.PNG

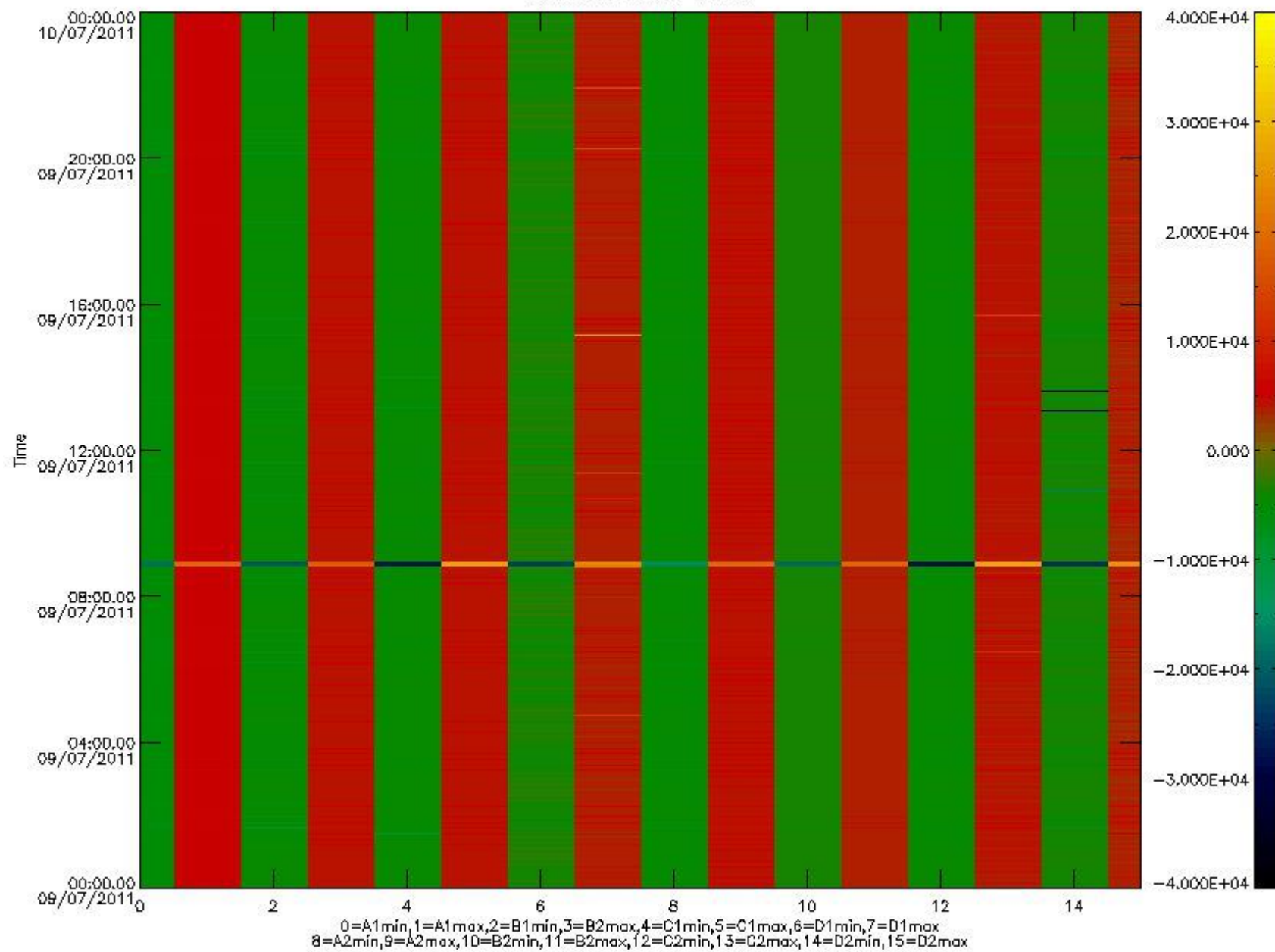


mipas_daily_report_level0_KSPT_L0_4504_N_20110709_10.PNG

The following table shows channel statistics for all channels for this day.

Channel	Min	Max	ADC
A1	-18939	20135	16bit
B1	-21855	18667	16bit
C1	-28036	27951	16bit
D1	-24009	30351	16bit
A2	-16344	20294	16bit
B2	-20215	19732	16bit
C2	-29141	28806	16bit
D2	-32768	26248	16bit

MIPNLOP_MIPSOUPAC_aux_fields_igm_cal, channel statistics plot
Colour indicates value.



mipas_daily_report_level0_KSPT_L0_4504_N_20110709_11.PNG

0.3 ADF monitoring

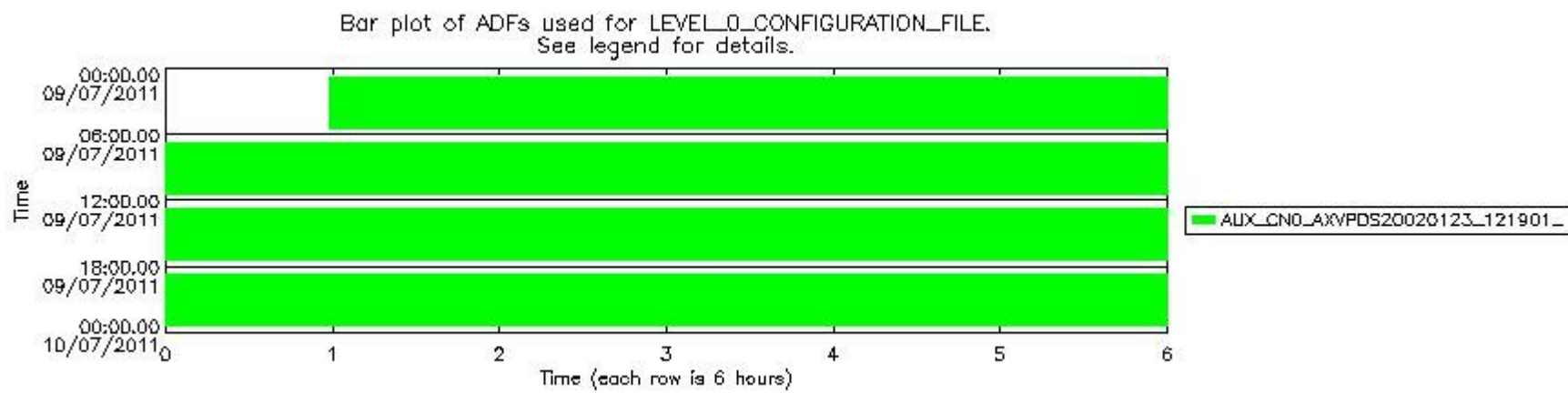
The use of ADFs is shown in two ways:

1. By means of two tables that can be used to find the ADF used for a specific product.
2. By means of plots that show changes in ADF using colours.

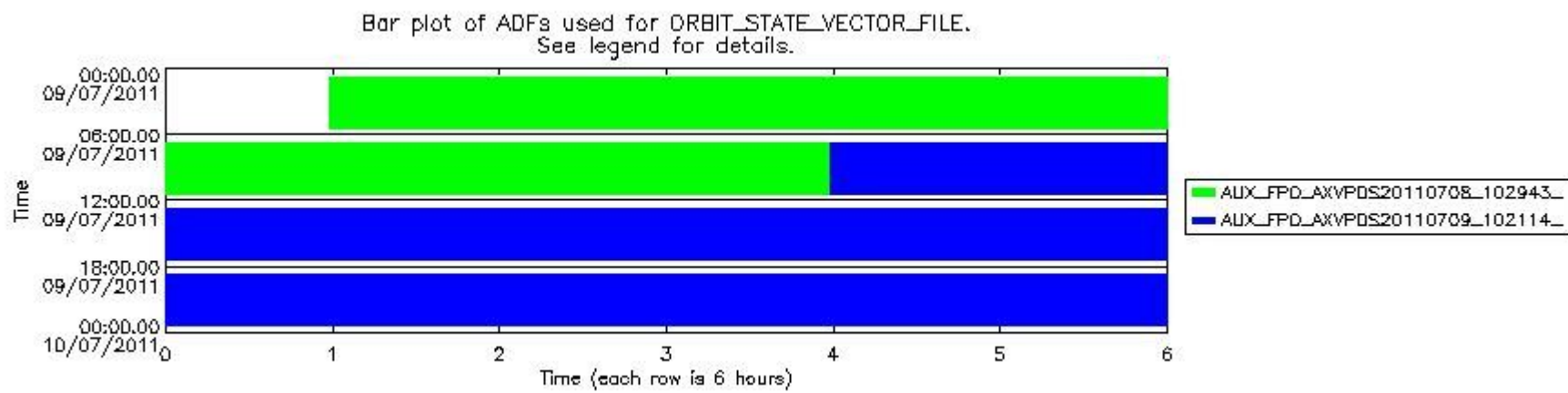
Number	ADF
0	AUX_CN0_AXVPDS20020123_121901_20020101_000000_20200101_000000
1	AUX_FPO_AXVPDS20110708_102943_20110707_190542_20110717_211928
2	AUX_FPO_AXVPDS20110709_102114_20110708_182857_20110718_204245

Number	Product name	#CN0	#FPO
--------	--------------	------	------

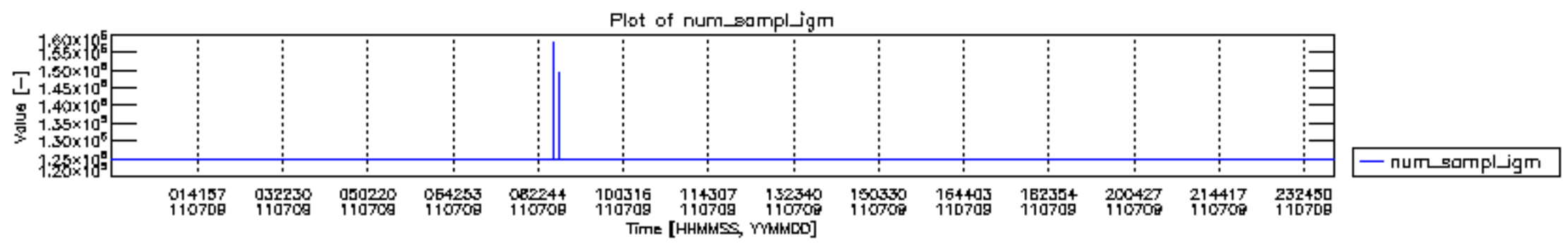
0	MIP_NL__0PNPDE20110709_005854_000102013104_00203_48924_9197.N1	0	1
1	MIP_NL__0PNPDE20110709_034822_000062113104_00205_48926_9198.N1	0	1
2	MIP_NL__0PNPDE20110709_053117_000060753104_00206_48927_9199.N1	0	1
3	MIP_NL__0PNPDK20110709_071159_000040013104_00207_48928_5708.N1	0	1
4	MIP_NL__0PNPDK20110709_081806_000060833104_00208_48929_5709.N1	0	1
5	MIP_NL__0PNPDK20110709_095845_000059373104_00209_48930_5710.N1	0	2
6	MIP_NL__0PNPDK20110709_113656_000060273104_00210_48931_5711.N1	0	2
7	MIP_NL__0PNPDK20110709_131639_000059523104_00211_48932_5712.N1	0	2
8	MIP_NL__0PNPDK20110709_145517_000059203104_00212_48933_5713.N1	0	2
9	MIP_NL__0PNPDK20110709_163324_000058263104_00213_48934_5717.N1	0	2
10	MIP_NL__0PNPDK20110709_172626_000026453104_00213_48934_5715.N1	0	2
11	MIP_NL__0PNPDK20110709_180932_000059793104_00214_48935_5716.N1	0	2
12	MIP_NL__0PNPDE20110709_194737_000041553104_00215_48936_9200.N1	0	2
13	MIP_NL__0PNPDE20110709_205554_000064033104_00215_48936_9201.N1	0	2
14	MIP_NL__0PNPDE20110709_224134_000060253104_00216_48937_9202.N1	0	2

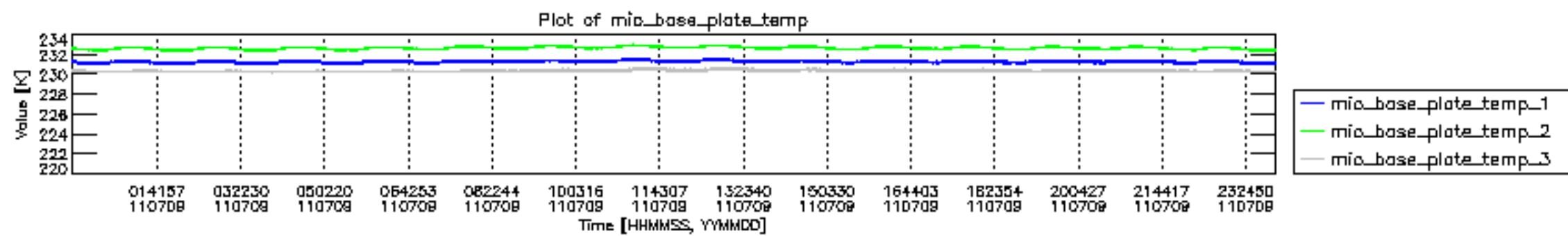


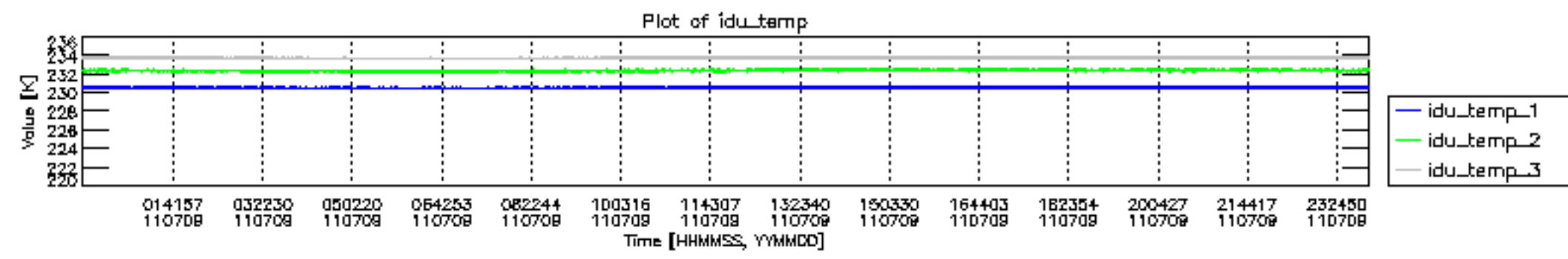
mipas_daily_report_level0_KSPT_L0_4504_N_20110709_12.PNG

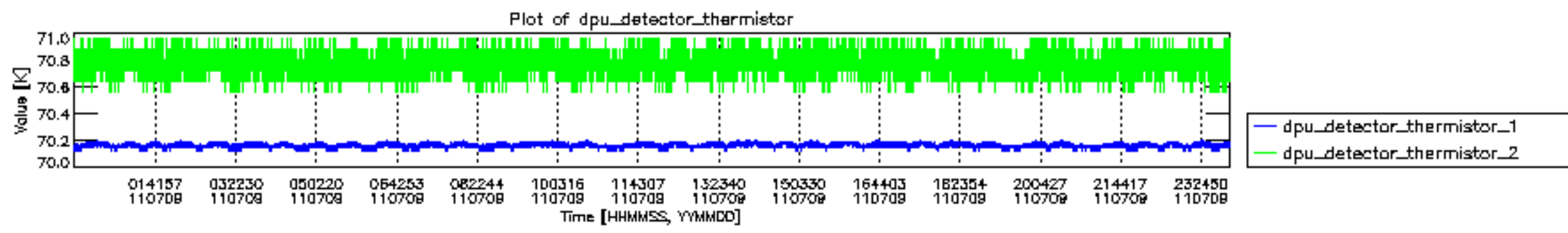


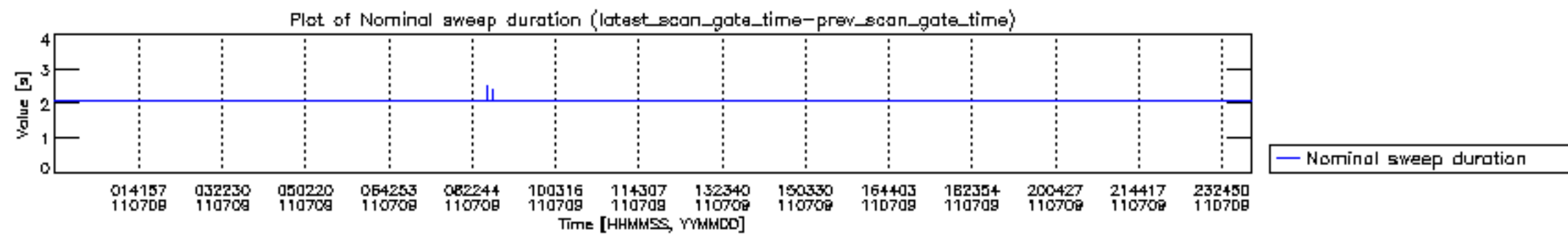
mipas_daily_report_level0_KSPT_L0_4504_N_20110709_13.PNG

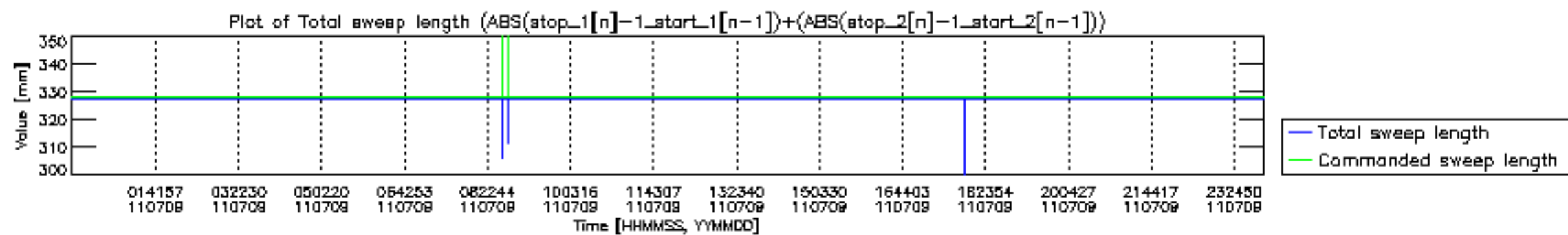


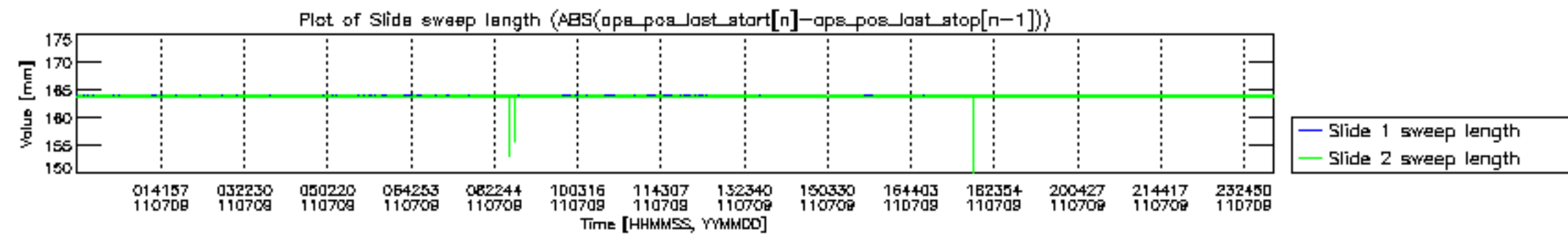


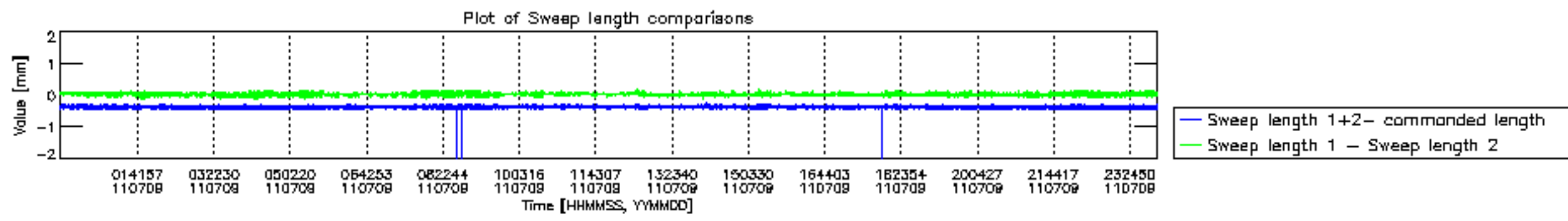


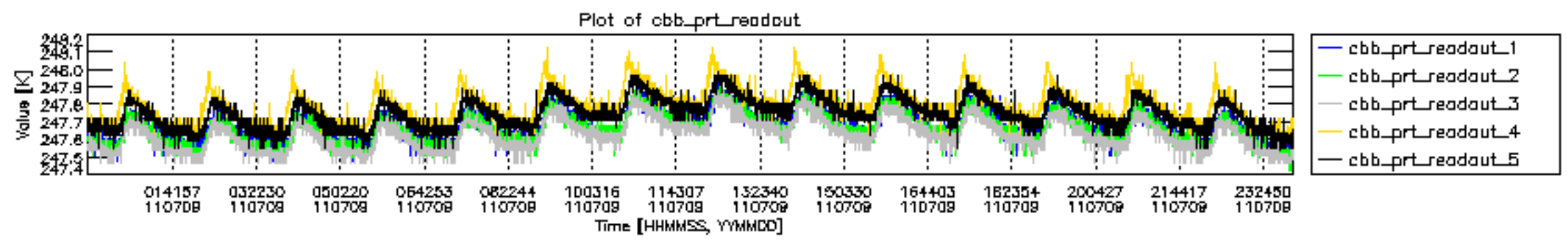


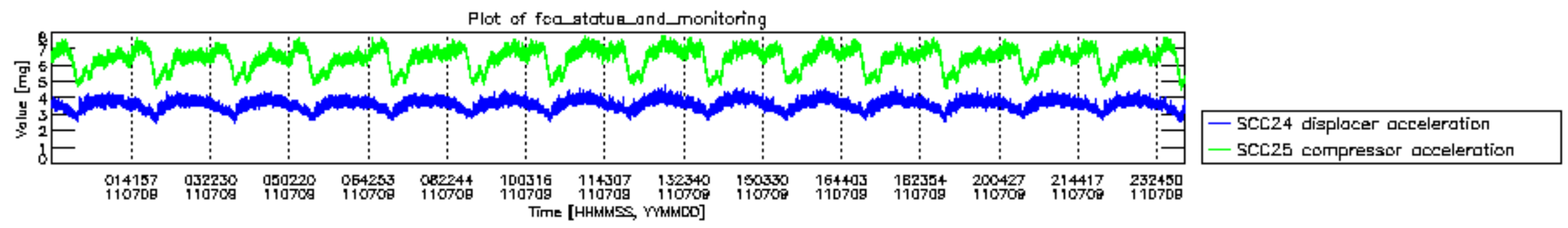




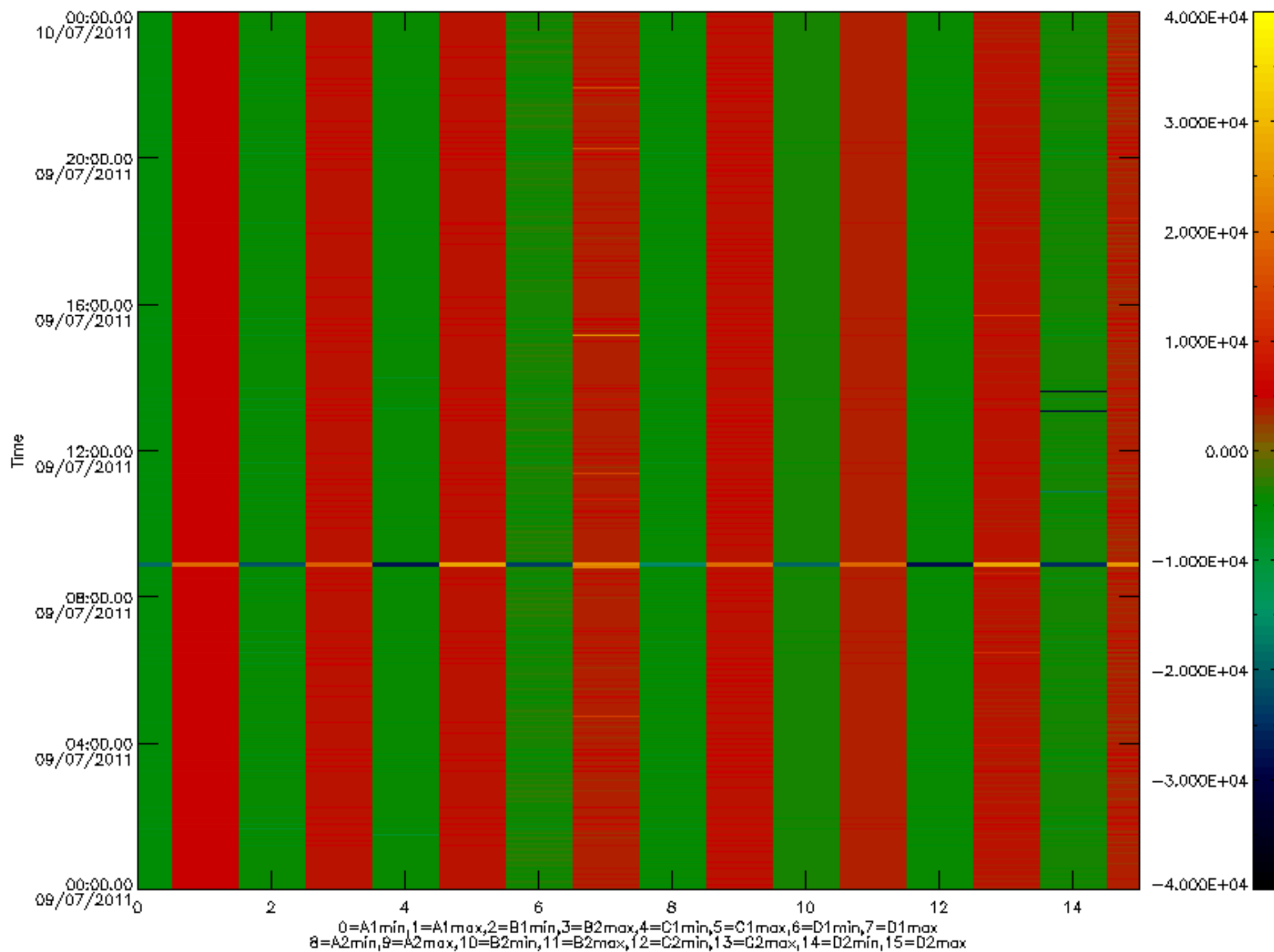


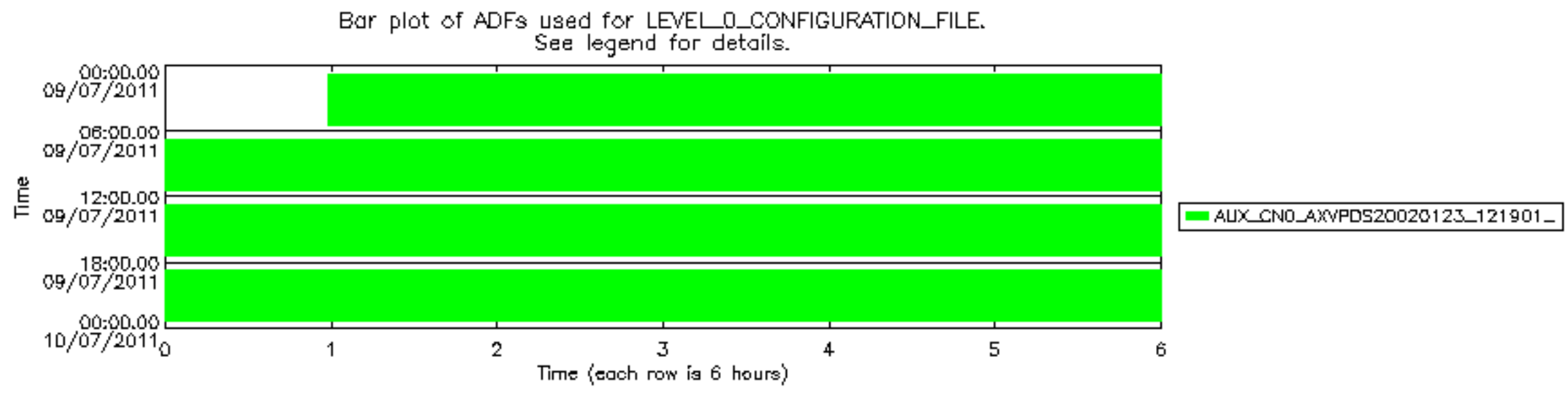






MIPNLOP_MIPSOUPAC_aux_fields_igm_cal, channel statistics plot
 Colour indicates value.





Bar plot of ADFs used for ORBIT_STATE_VECTOR_FILE.
See legend for details.

