

0. MIPAS Daily Report for level 0 products

[0.1 General Info](#)

[0.2 Instrument Operational Performance Parameters](#)

[0.3 ADF monitoring](#)

0.1 General Info

This report contains a daily analysis on parameters extracted from MIPAS level 0 data (The MIP_NL__0P product).

0.1.1 Report summary

The table below shows general characteristics of the data that are included into this report.

Item	Value
Report version	v1.6 08-11-2010
Time of report generation	27APR2011 05:20:36
Data source version	KSPT_L0/4504-N
Processing scope for products	22APR2011 00:00:00 to 23APR2011 00:00:00
Start time of first product within scope	22APR2011 00:17:06
Stop time of last product within scope	23APR2011 01:20:04
Total number of level 0 products	17
Number of level 0 products with errors	2

0.1.2 Product Quality Indicators per product

The following table shows a summary for each product used in this report.

#	Product name	Start time	Stop time	Prod err	ISP err sign	ISP miss sign	ISP disc sign	rs sign
0	MIP_NL__0PNPDE20110422_001706_000059483101_00375_47803_3483.N1	22APR2011 00:17:06	22APR2011 01:56:14	0	0	0	0	0
1	MIP_NL__0PNPDE20110422_015518_000043973101_00376_47804_3484.N1	22APR2011 01:55:18	22APR2011 03:08:35	0	0	0	0	0
2	MIP_NL__0PNPDE20110422_030802_000061513101_00377_47805_3485.N1	22APR2011 03:08:02	22APR2011 04:50:33	0	0	0	0	0
3	MIP_NL__0PNPDE20110422_044959_000060333101_00378_47806_3486.N1	22APR2011 04:49:59	22APR2011 06:30:33	0	0	0	0	0
4	MIP_NL__0PNPDK20110422_062959_000041203101_00379_47807_4918.N1	22APR2011 06:29:59	22APR2011 07:38:39	0	0	0	0	0
5	MIP_NL__0PNPDK20110422_073807_000061213101_00380_47808_4919.N1	22APR2011 07:38:07	22APR2011 09:20:08	0	0	0	0	0
6	MIP_NL__0PNPDK20110422_091926_000059433101_00381_47809_4920.N1	22APR2011 09:19:26	22APR2011 10:58:30	1	1	0	0	0
7	MIP_NL__0PNPDK20110422_105746_000060003101_00382_47810_4921.N1	22APR2011 10:57:46	22APR2011 12:37:46	0	0	0	0	0
8	MIP_NL__0PNPDK20110422_123702_000059563101_00383_47811_4922.N1	22APR2011 12:37:02	22APR2011 14:16:18	0	0	0	0	0
9	MIP_NL__0PNPDK20110422_141544_000058263101_00384_47812_4923.N1	22APR2011 14:15:44	22APR2011 15:52:51	0	0	0	0	0
10	MIP_NL__0PNPDK20110422_155117_000060063101_00385_47813_4928.N1	22APR2011 15:51:17	22APR2011 17:31:23	1	1	0	0	0
11	MIP_NL__0PNPDK20110422_163628_000032943101_00385_47813_4925.N1	22APR2011 16:36:28	22APR2011 17:31:23	0	0	0	0	0
12	MIP_NL__0PNPDK20110422_173014_000059183101_00386_47814_4926.N1	22APR2011 17:30:14	22APR2011 19:08:52	0	0	0	0	0
13	MIP_NL__0PNPDK20110422_190720_000061273101_00387_47815_4927.N1	22APR2011 19:07:20	22APR2011 20:49:28	0	0	0	0	0
14	MIP_NL__0PNPDE20110422_204756_000042893101_00388_47816_3487.N1	22APR2011 20:47:56	22APR2011 21:59:25	0	0	0	0	0
15	MIP_NL__0PNPDE20110422_215830_000062253101_00388_47816_3488.N1	22APR2011 21:58:30	22APR2011 23:42:16	0	0	0	0	0
16	MIP_NL__0PNPDE20110422_234103_000059413101_00389_47817_3489.N1	22APR2011 23:41:03	23APR2011 01:20:04	0	0	0	0	0

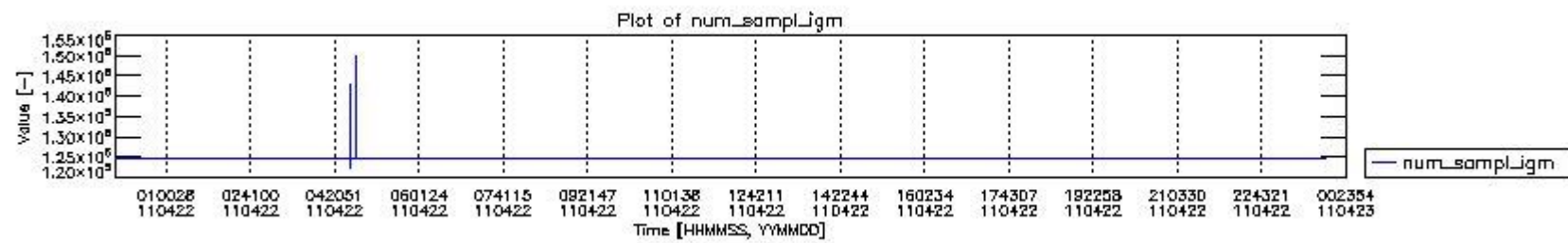
0.2 Instrument Operational Performance Parameters

The following plots give an overview of various instrument parameters for this day. The instrument parameters are part of the auxiliary data field within the source packets of the MIP_NL__0P product. The auxiliary data is normally included twice per interferogram. Note that only the first packet is currently included in monitoring.

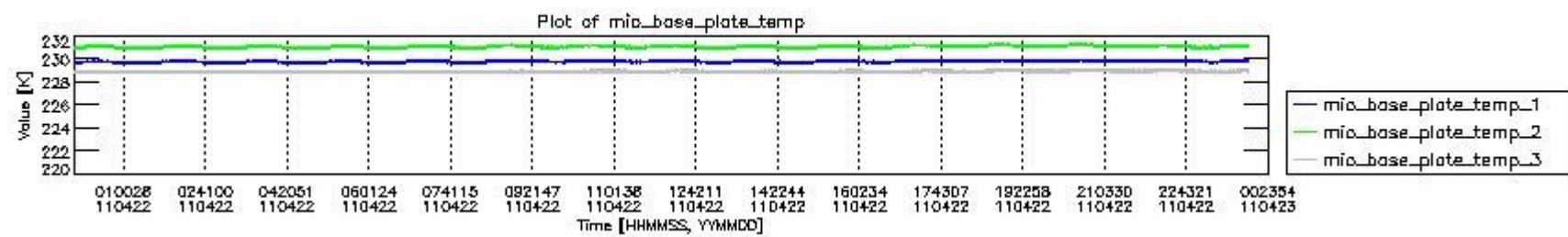
The following table shows the counts of various interferogram number of samples

Number of igm samples	Count [#]	Count [%]
122550	1	0.0023127804

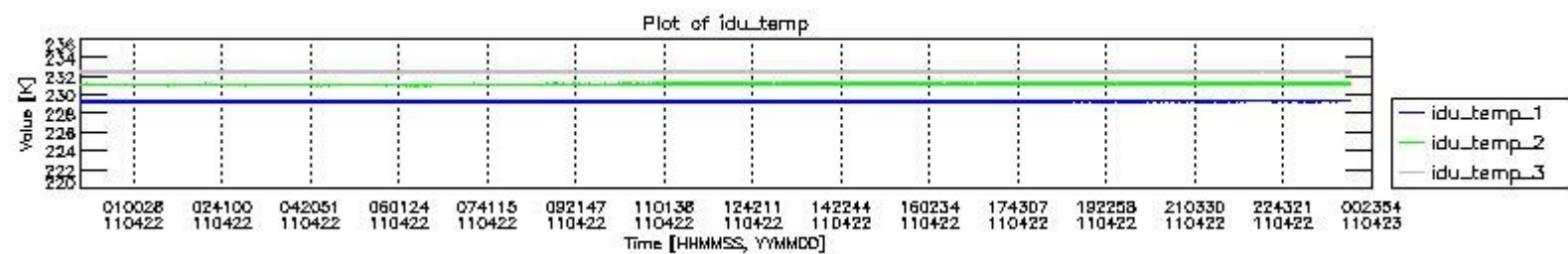
124800	40162	92.885887
124803	3070	7.1002359
127382	1	0.0023127804
140432	1	0.0023127804
142682	1	0.0023127804
147514	1	0.0023127804
150096	1	0.0023127804



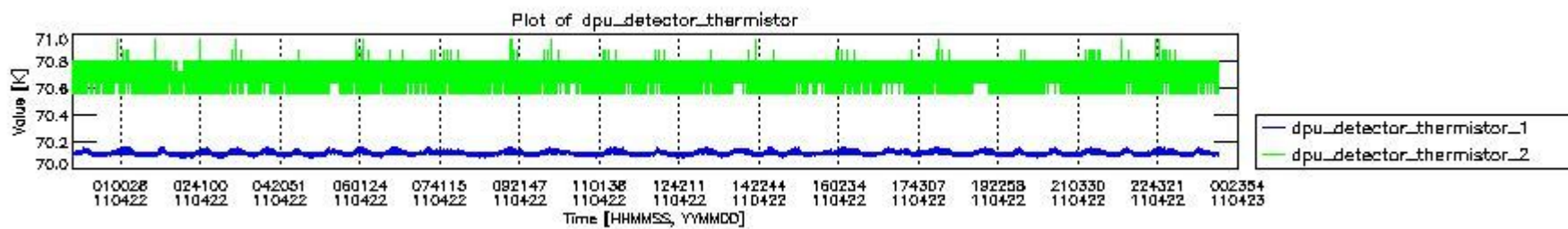
mipas_daily_report_level0_KSPT_L0_4504_N_20110422_0.PNG



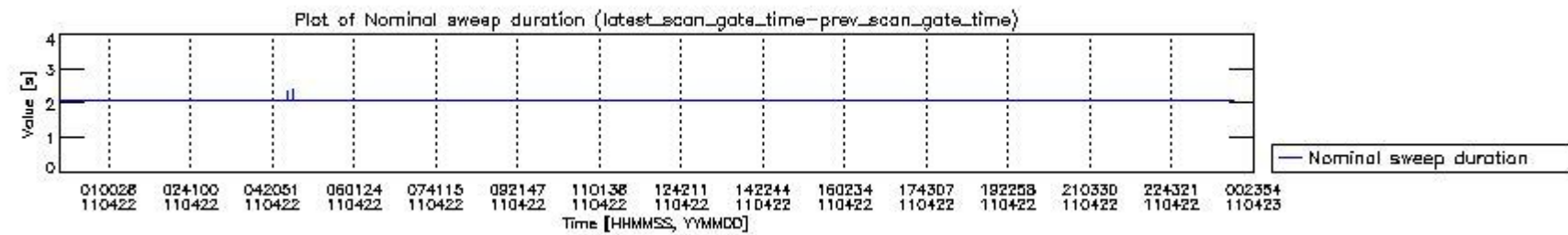
mipas_daily_report_level0_KSPT_L0_4504_N_20110422_1.PNG



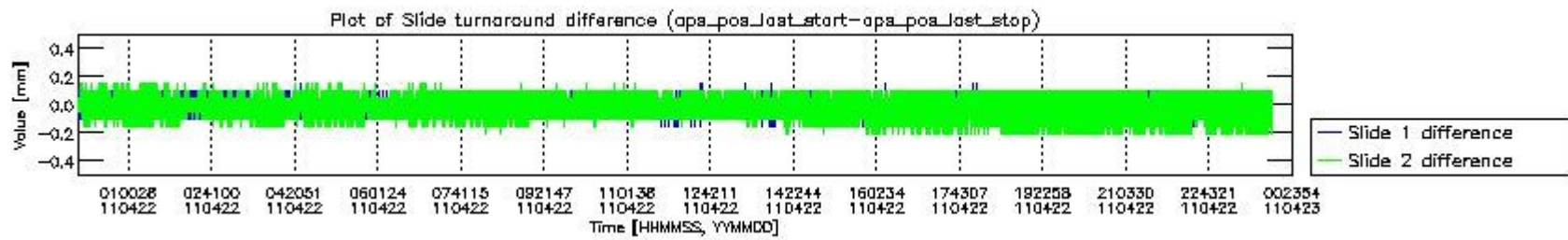
mipas_daily_report_level0_KSPT_L0_4504_N_20110422_2.PNG



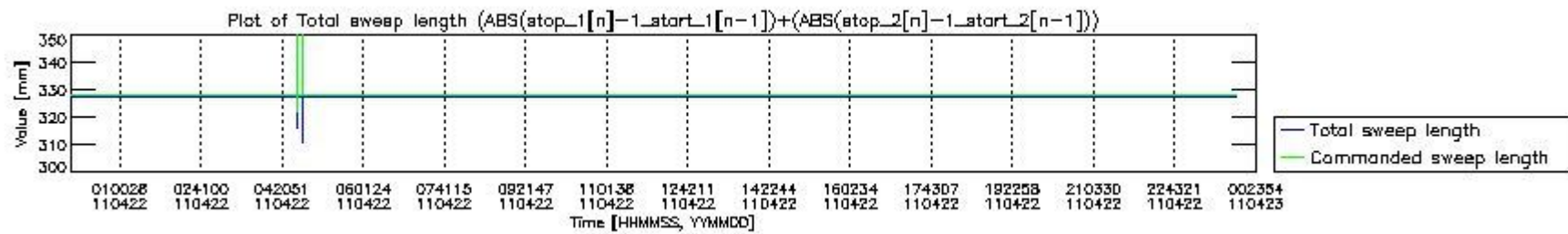
mipas_daily_report_level0_KSPT_L0_4504_N_20110422_3.PNG



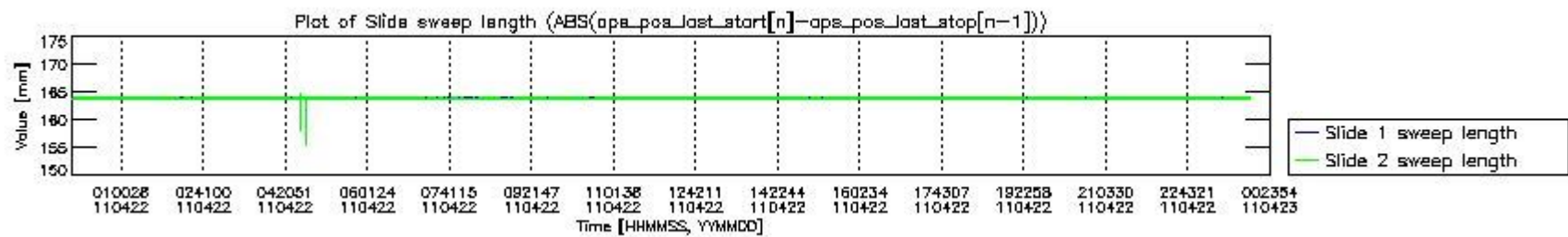
mipas_daily_report_level0_KSPT_L0_4504_N_20110422_4.PNG



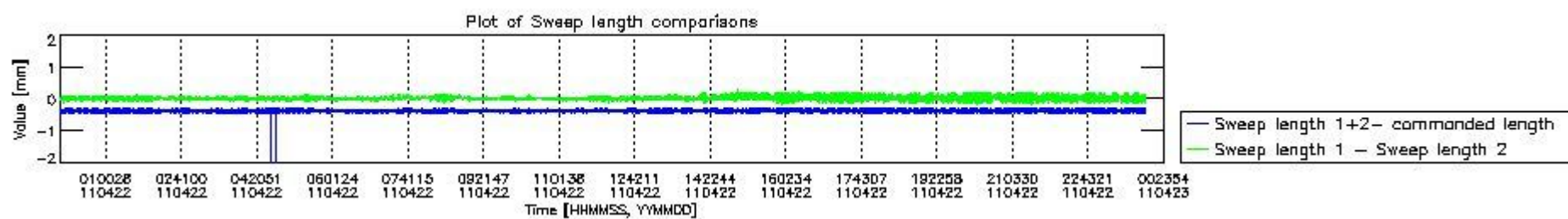
mipas_daily_report_level0_KSPT_L0_4504_N_20110422_5.PNG



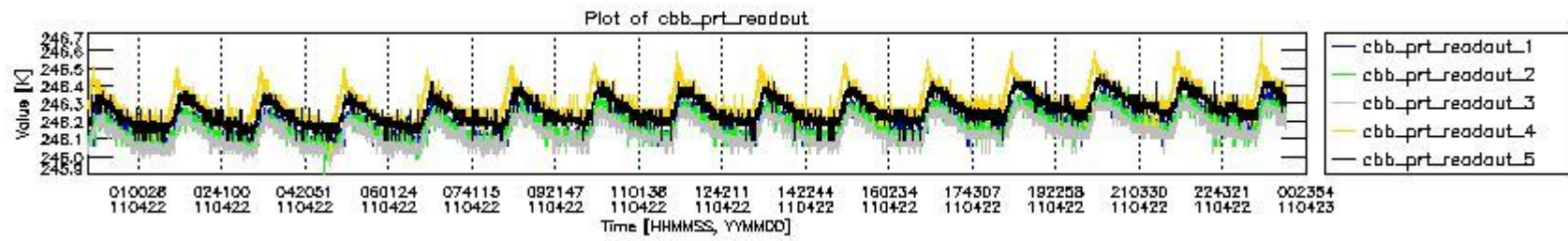
mipas_daily_report_level0_KSPT_L0_4504_N_20110422_6.PNG



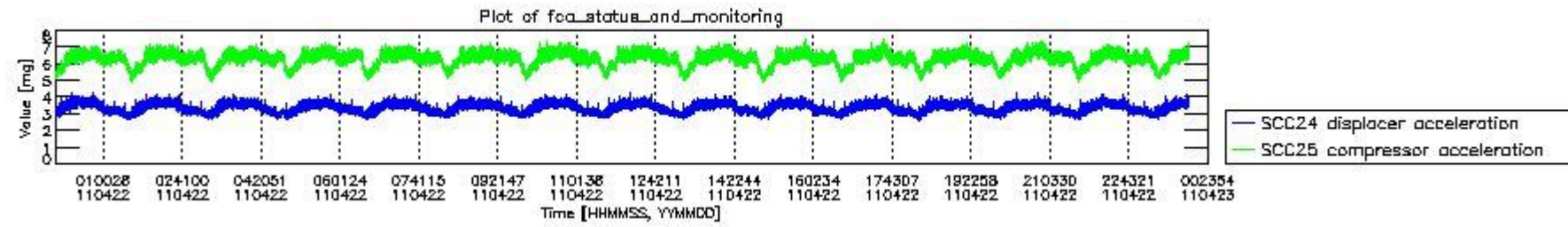
mipas_daily_report_level0_KSPT_L0_4504_N_20110422_7.PNG



mipas_daily_report_level0_KSPT_L0_4504_N_20110422_8.PNG



mipas_daily_report_level0_KSPT_L0_4504_N_20110422_9.PNG

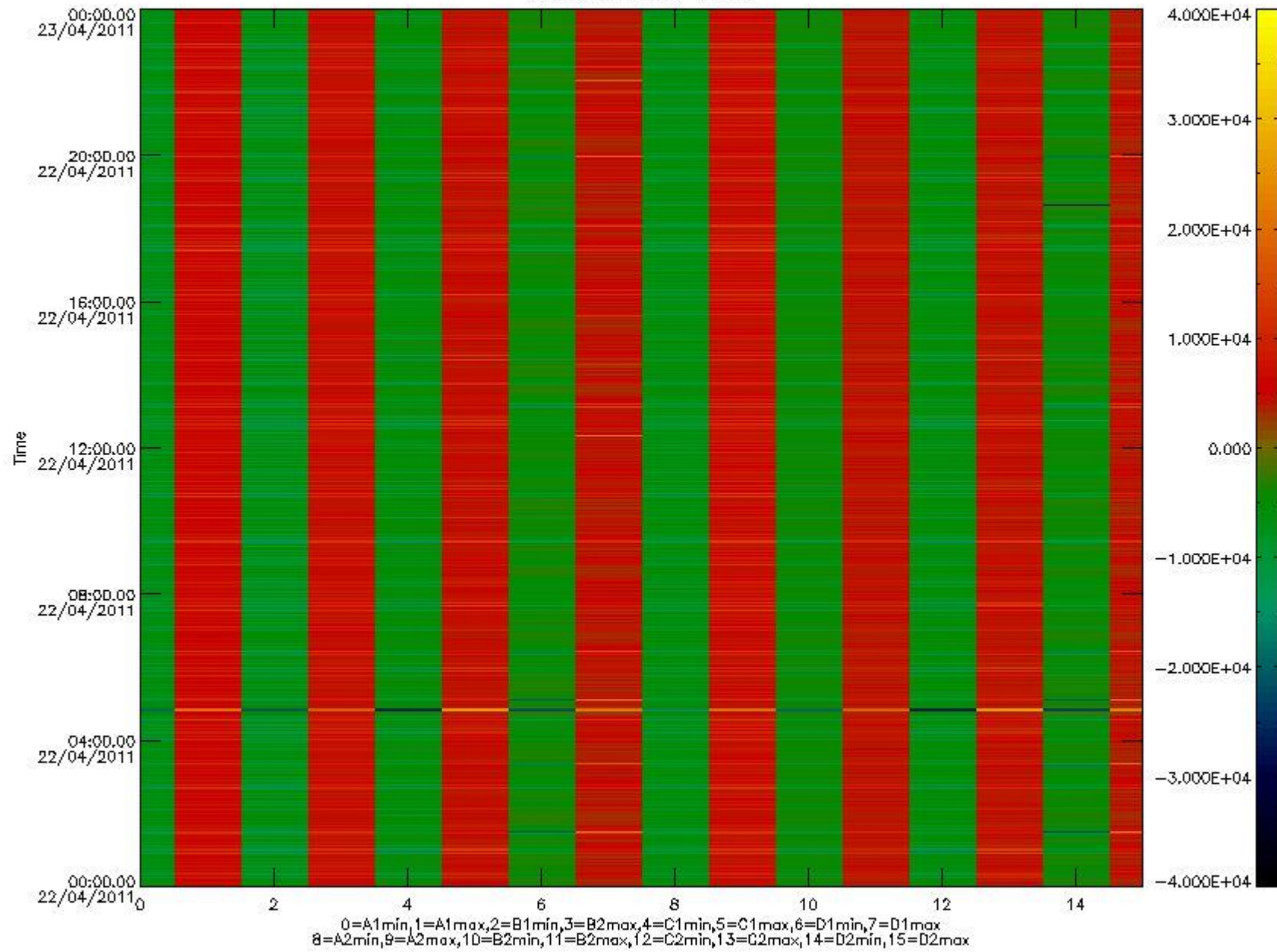


mipas_daily_report_level0_KSPT_L0_4504_N_20110422_10.PNG

The following table shows channel statistics for all channels for this day.

Channel	Min	Max	ADC
A1	-18957	20375	16bit
B1	-21620	18320	16bit
C1	-26172	26105	16bit
D1	-32768	32767	16bit
A2	-16318	20503	16bit
B2	-19947	19214	16bit
C2	-27213	26830	16bit
D2	-32768	32767	16bit

MIPNLOP_MIPSOUPAC_aux_fields_1gm_cal, channel statistics plot
Colour indicates value.



mipas_daily_report_level0_KSPT_L0_4504_N_20110422_11.PNG

0.3 ADF monitoring

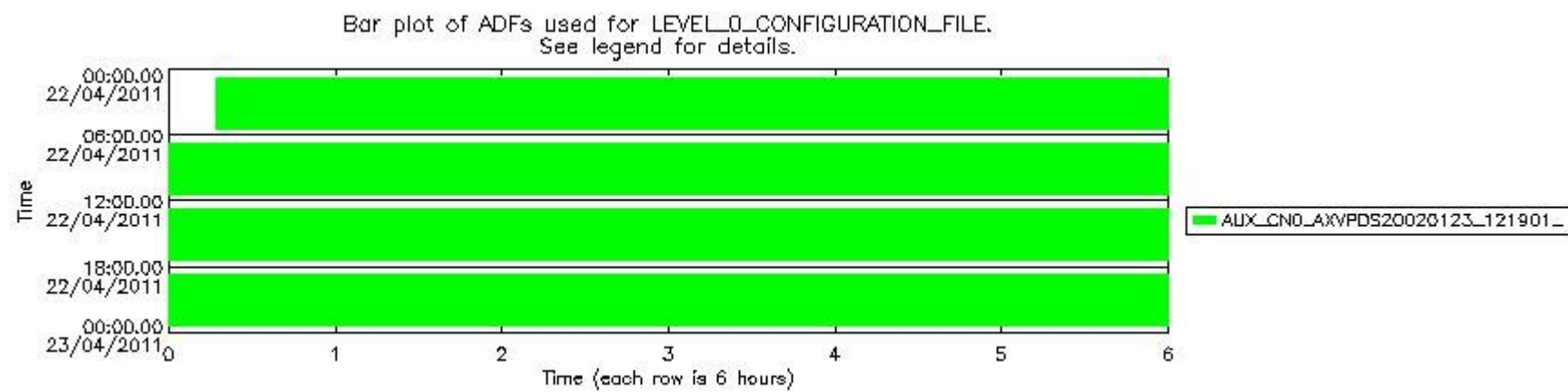
The use of ADFs is shown in two ways:

1. By means of two tables that can be used to find the ADF used for a specific product.
2. By means of plots that show changes in ADF using colours.

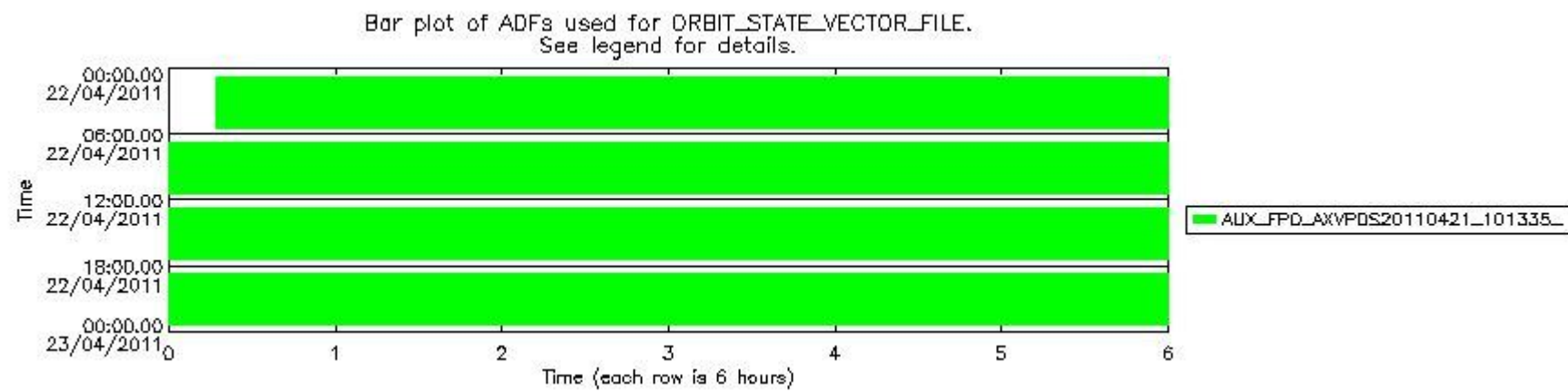
Number	ADF
0	AUX_CN0_AXVPDS20020123_121901_20020101_000000_20200101_000000
1	AUX_FPO_AXVPDS20110421_101335_20110420_182423_20110430_203811

Number	Product name	#CN0	#FPO
0	MIP_NL_0PNPDE20110422_001706_000059483101_00375_47803_3483.N1	0	1

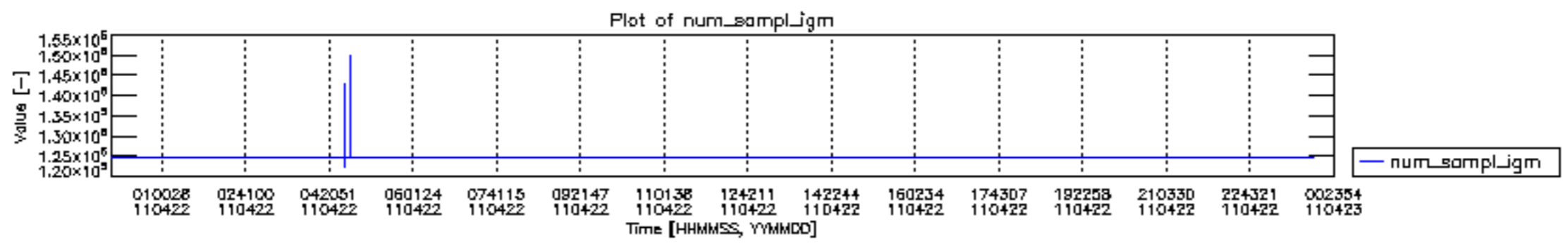
1	MIP_NL__0PNPDE20110422_015518_000043973101_00376_47804_3484.N1	0	1
2	MIP_NL__0PNPDE20110422_030802_000061513101_00377_47805_3485.N1	0	1
3	MIP_NL__0PNPDE20110422_044959_000060333101_00378_47806_3486.N1	0	1
4	MIP_NL__0PNPDK20110422_062959_000041203101_00379_47807_4918.N1	0	1
5	MIP_NL__0PNPDK20110422_073807_000061213101_00380_47808_4919.N1	0	1
6	MIP_NL__0PNPDK20110422_091926_000059433101_00381_47809_4920.N1	0	1
7	MIP_NL__0PNPDK20110422_105746_000060003101_00382_47810_4921.N1	0	1
8	MIP_NL__0PNPDK20110422_123702_000059563101_00383_47811_4922.N1	0	1
9	MIP_NL__0PNPDK20110422_141544_000058263101_00384_47812_4923.N1	0	1
10	MIP_NL__0PNPDK20110422_155117_000060063101_00385_47813_4928.N1	0	1
11	MIP_NL__0PNPDK20110422_163628_000032943101_00385_47813_4925.N1	0	1
12	MIP_NL__0PNPDK20110422_173014_000059183101_00386_47814_4926.N1	0	1
13	MIP_NL__0PNPDK20110422_190720_000061273101_00387_47815_4927.N1	0	1
14	MIP_NL__0PNPDE20110422_204756_000042893101_00388_47816_3487.N1	0	1
15	MIP_NL__0PNPDE20110422_215830_000062253101_00388_47816_3488.N1	0	1
16	MIP_NL__0PNPDE20110422_234103_000059413101_00389_47817_3489.N1	0	1

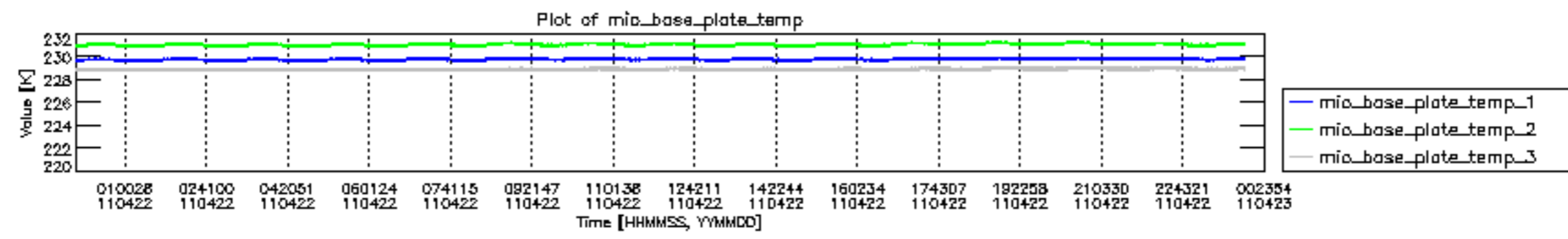


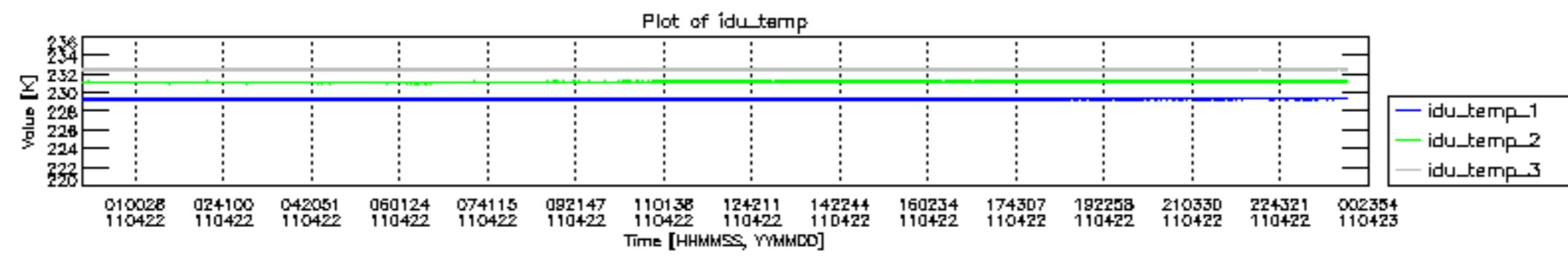
mipas_daily_report_level0_KSPT_L0_4504_N_20110422_12.PNG

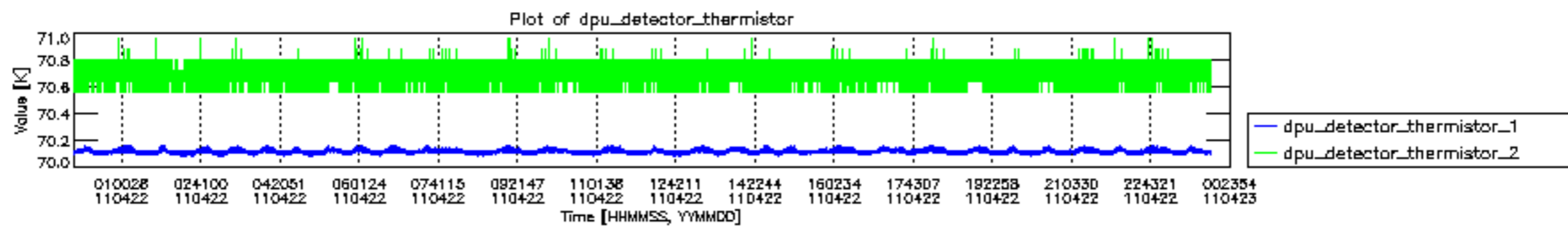


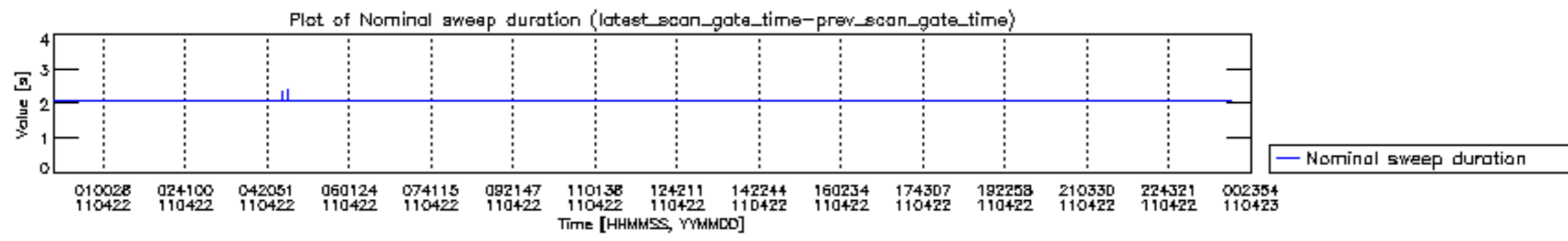
mipas_daily_report_level0_KSPT_L0_4504_N_20110422_13.PNG

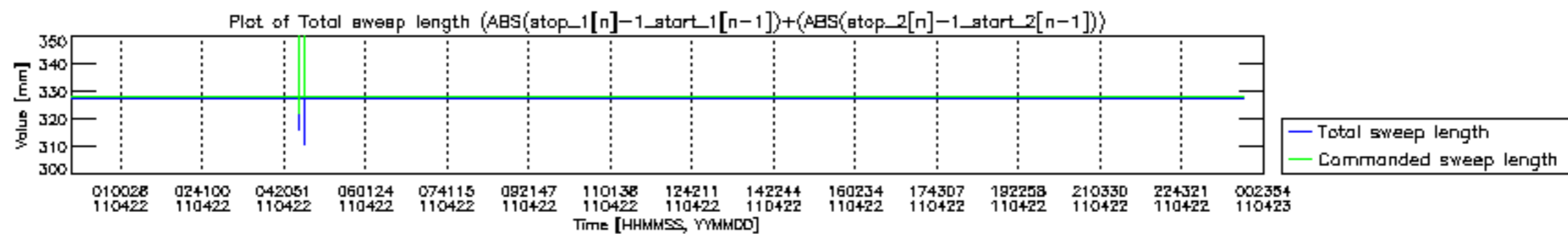


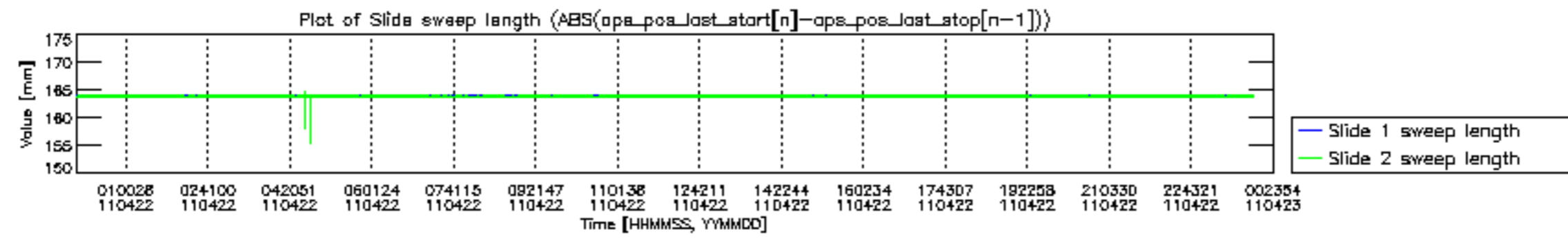


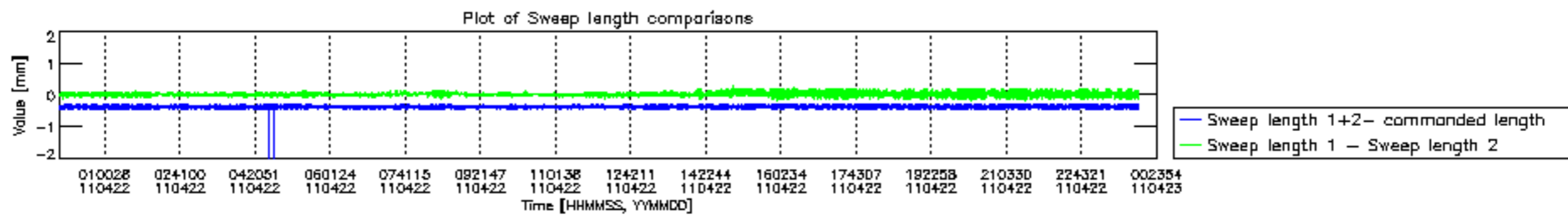


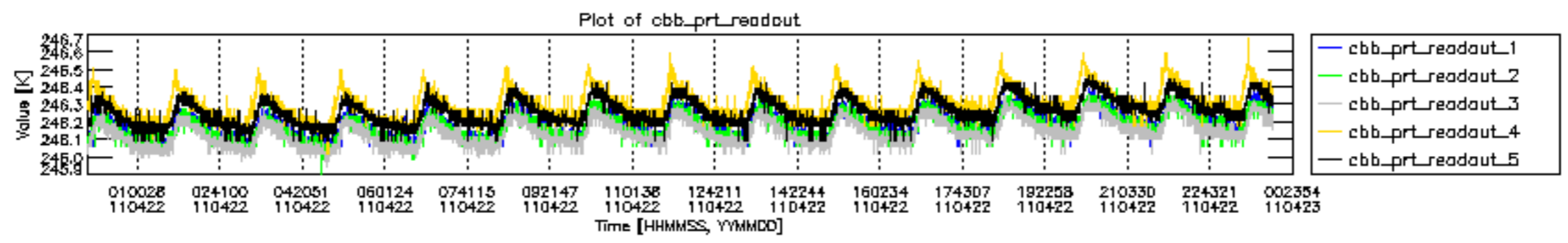


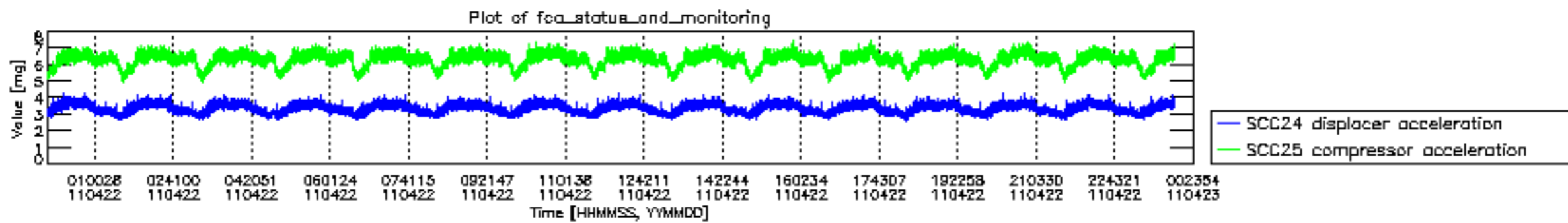












MIPNLOP_MIPSOUPAC_aux_fields_igm_cal, channel statistics plot
 Colour indicates value.

