

0. MIPAS Daily Report for level 0 products

[0.1 General Info](#)

[0.2 Instrument Operational Performance Parameters](#)

[0.3 ADF monitoring](#)

0.1 General Info

This report contains a daily analysis on parameters extracted from MIPAS level 0 data (The MIP_NL__0P product).

0.1.1 Report summary

The table below shows general characteristics of the data that are included into this report.

Item	Value
Report version	v1.6 08-11-2010
Time of report generation	24APR2011 05:23:37
Data source version	KSPT_L0/4504-N
Processing scope for products	19APR2011 00:00:00 to 20APR2011 00:00:00
Start time of first product within scope	19APR2011 00:28:05
Stop time of last product within scope	20APR2011 01:29:22
Total number of level 0 products	16
Number of level 0 products with errors	0

0.1.2 Product Quality Indicators per product

The following table shows a summary for each product used in this report.

#	Product name	Start time	Stop time	Prod err	ISP err sign	ISP miss sign	ISP disc sign	rs sign
0	MIP_NL__0PNPDE20110419_002805_000057823101_00332_47760_3461.N1	19APR2011 00:28:05	19APR2011 02:04:27	0	0	0	0	0
1	MIP_NL__0PNPDE20110419_020330_000045103101_00333_47761_3462.N1	19APR2011 02:03:30	19APR2011 03:18:40	0	0	0	0	0
2	MIP_NL__0PNPDE20110419_031805_000061843101_00334_47762_3463.N1	19APR2011 03:18:05	19APR2011 05:01:09	0	0	0	0	0
3	MIP_NL__0PNPDE20110419_050035_000060053101_00335_47763_3464.N1	19APR2011 05:00:35	19APR2011 06:40:40	0	0	0	0	0
4	MIP_NL__0PNPDK20110419_064007_000040923101_00336_47764_4890.N1	19APR2011 06:40:07	19APR2011 07:48:19	0	0	0	0	0
5	MIP_NL__0PNPDK20110419_074748_000061083101_00337_47765_4891.N1	19APR2011 07:47:48	19APR2011 09:29:36	0	0	0	0	0
6	MIP_NL__0PNPDK20110419_092852_000060173101_00338_47766_4892.N1	19APR2011 09:28:52	19APR2011 11:09:10	0	0	0	0	0
7	MIP_NL__0PNPDK20110419_110826_000059353101_00339_47767_4893.N1	19APR2011 11:08:26	19APR2011 12:47:21	0	0	0	0	0
8	MIP_NL__0PNPDK20110419_124641_000059163101_00340_47768_4894.N1	19APR2011 12:46:41	19APR2011 14:25:17	0	0	0	0	0
9	MIP_NL__0PNPDK20110419_142444_000058873101_00341_47769_4895.N1	19APR2011 14:24:44	19APR2011 16:02:51	0	0	0	0	0
10	MIP_NL__0PNPDK20110419_160121_000059643101_00342_47770_4896.N1	19APR2011 16:01:21	19APR2011 17:40:45	0	0	0	0	0
11	MIP_NL__0PNPDK20110419_173943_000059083101_00343_47771_4897.N1	19APR2011 17:39:43	19APR2011 19:18:10	0	0	0	0	0
12	MIP_NL__0PNPDK20110419_191638_000061273101_00344_47772_4898.N1	19APR2011 19:16:38	19APR2011 20:58:46	0	0	0	0	0
13	MIP_NL__0PNPDE20110419_205739_000043583101_00345_47773_3465.N1	19APR2011 20:57:39	19APR2011 22:10:17	0	0	0	0	0
14	MIP_NL__0PNPDE20110419_220914_000061633101_00345_47773_3466.N1	19APR2011 22:09:14	19APR2011 23:51:57	0	0	0	0	0
15	MIP_NL__0PNPDE20110419_235100_000059023101_00346_47774_3467.N1	19APR2011 23:51:00	20APR2011 01:29:22	0	0	0	0	0

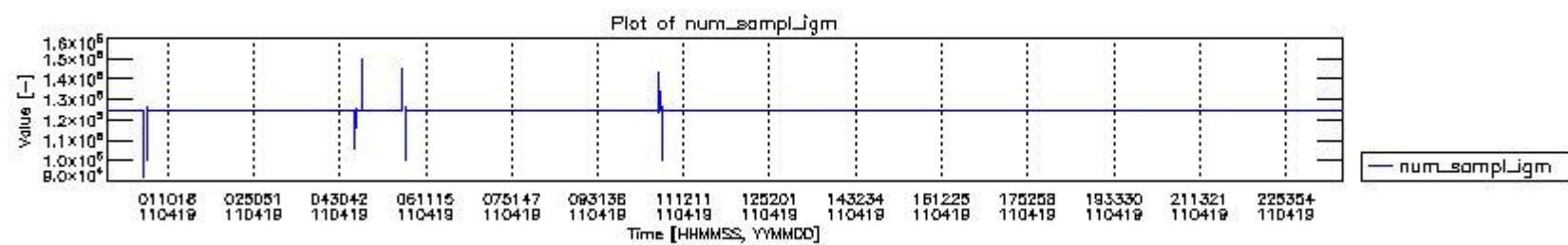
0.2 Instrument Operational Performance Parameters

The following plots give an overview of various instrument parameters for this day. The instrument parameters are part of the auxiliary data field within the source packets of the MIP_NL__0P product. The auxiliary data is normally included twice per interferogram. Note that only the first packet is currently included in monitoring.

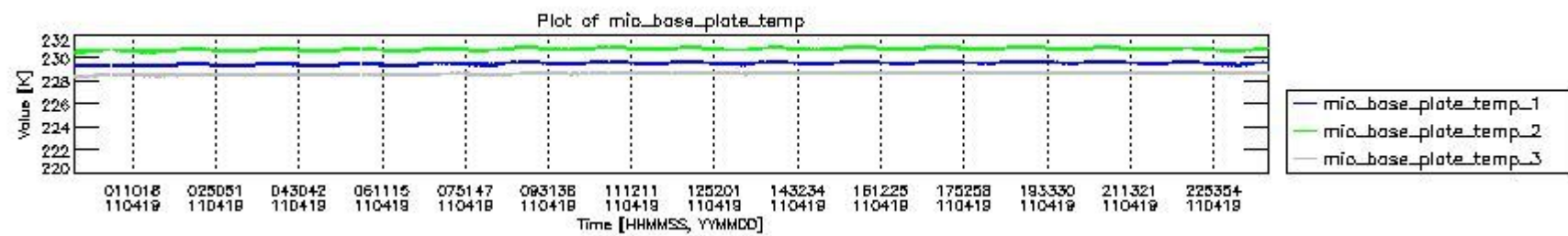
The following table shows the counts of various interferogram number of samples

Number of igm samples	Count [#]	Count [%]
91962	1	0.0024229502
98315	1	0.0024229502

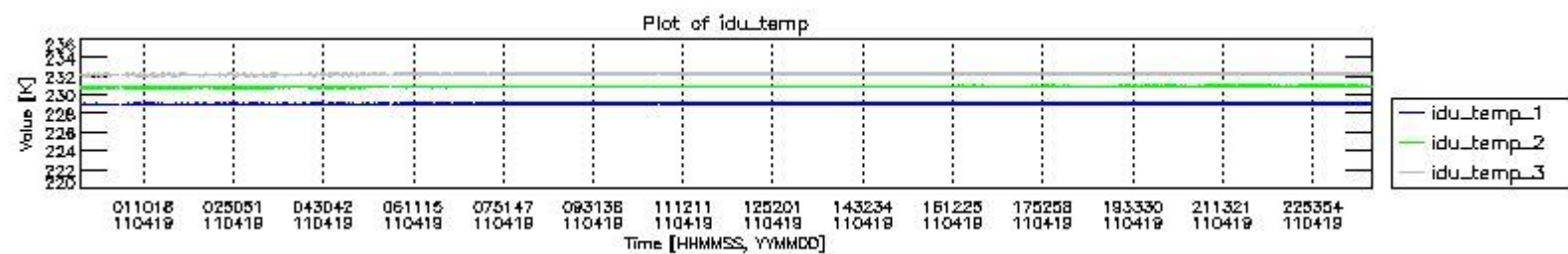
100483	2	0.0048459004
100557	1	0.0024229502
105600	1	0.0024229502
106532	1	0.0024229502
118447	1	0.0024229502
123368	1	0.0024229502
124557	1	0.0024229502
124800	38456	93.176972
124803	2792	6.7648769
125732	1	0.0024229502
125735	2	0.0048459004
125809	1	0.0024229502
126670	2	0.0048459004
126818	1	0.0024229502
127382	1	0.0024229502
142068	1	0.0024229502
143500	1	0.0024229502
144446	1	0.0024229502
144689	1	0.0024229502
147514	1	0.0024229502
150096	1	0.0024229502



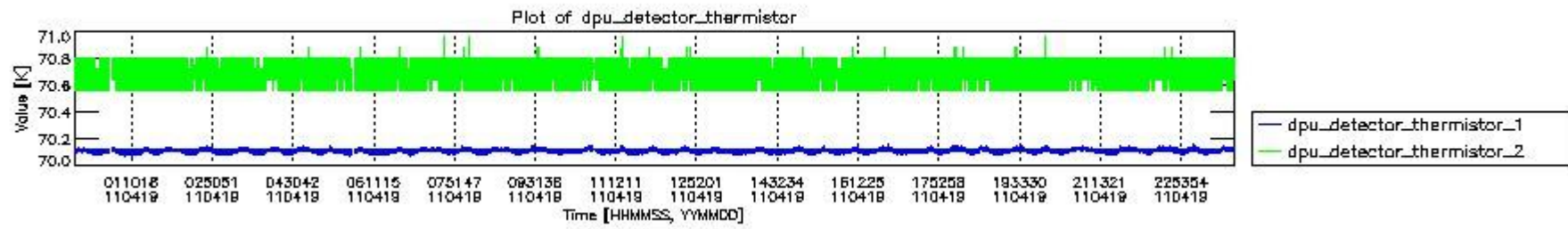
mipas_daily_report_level0_KSPT_L0_4504_N_20110419_0.PNG



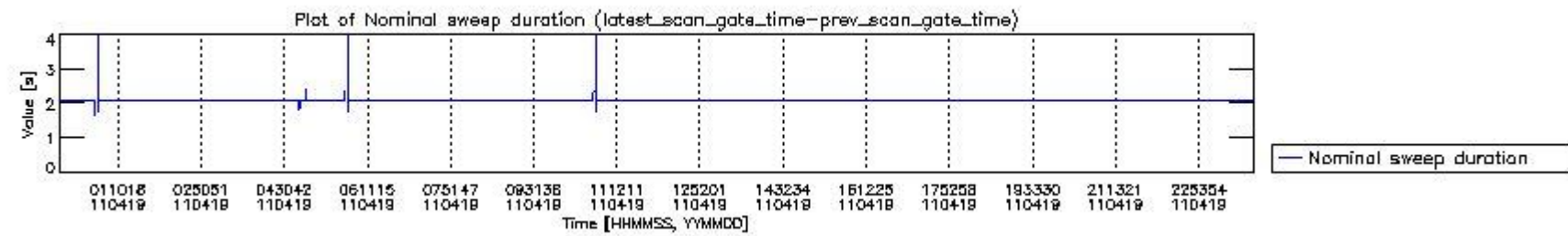
mipas_daily_report_level0_KSPT_L0_4504_N_20110419_1.PNG



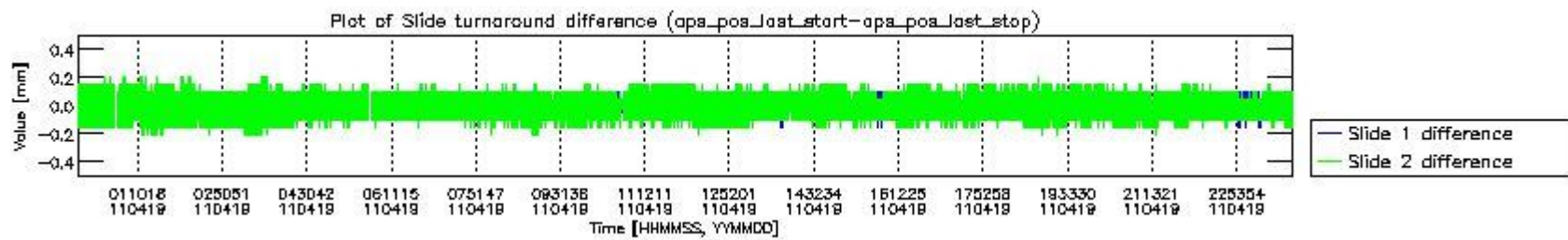
mipas_daily_report_level0_KSPT_L0_4504_N_20110419_2.PNG



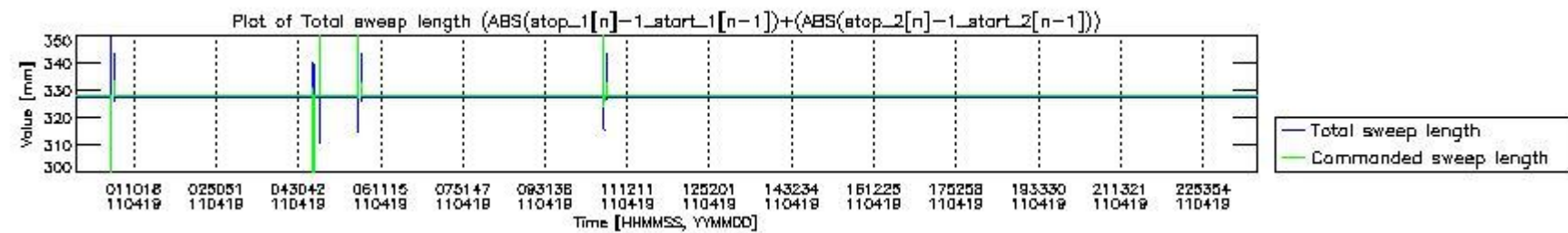
mipas_daily_report_level0_KSPT_L0_4504_N_20110419_3.PNG



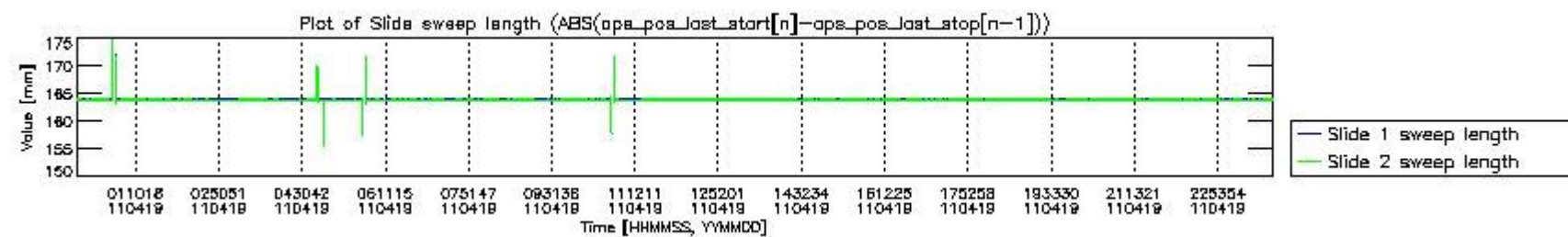
mipas_daily_report_level0_KSPT_L0_4504_N_20110419_4.PNG



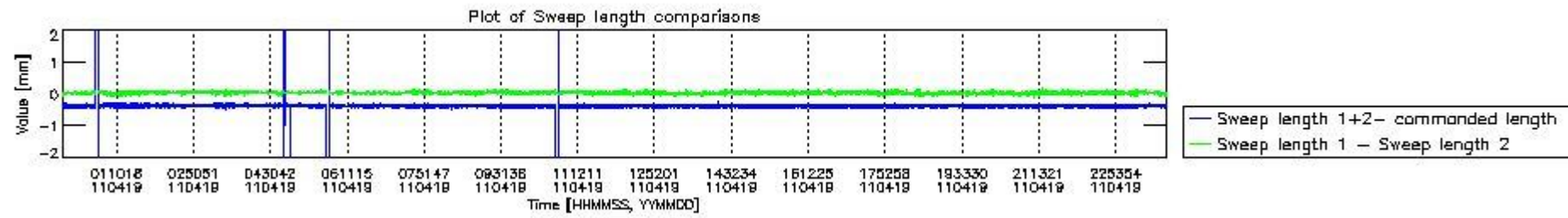
mipas_daily_report_level0_KSPT_L0_4504_N_20110419_5.PNG



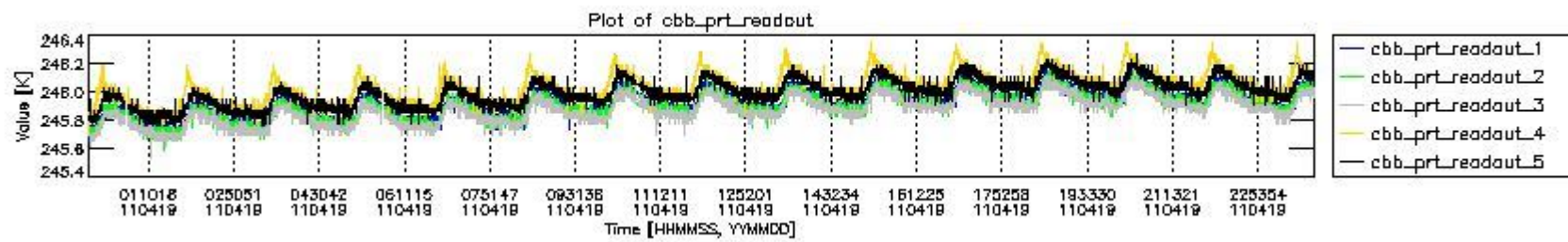
mipas_daily_report_level0_KSPT_L0_4504_N_20110419_6.PNG



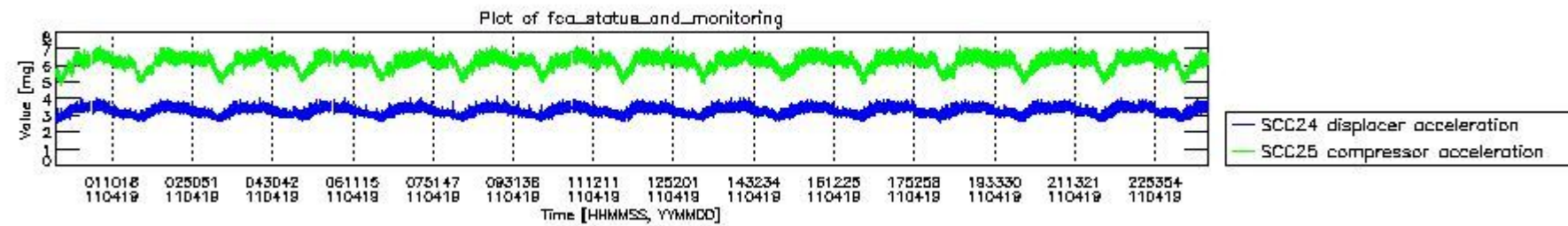
mipas_daily_report_level0_KSPT_L0_4504_N_20110419_7.PNG



mipas_daily_report_level0_KSPT_L0_4504_N_20110419_8.PNG



mipas_daily_report_level0_KSPT_L0_4504_N_20110419_9.PNG

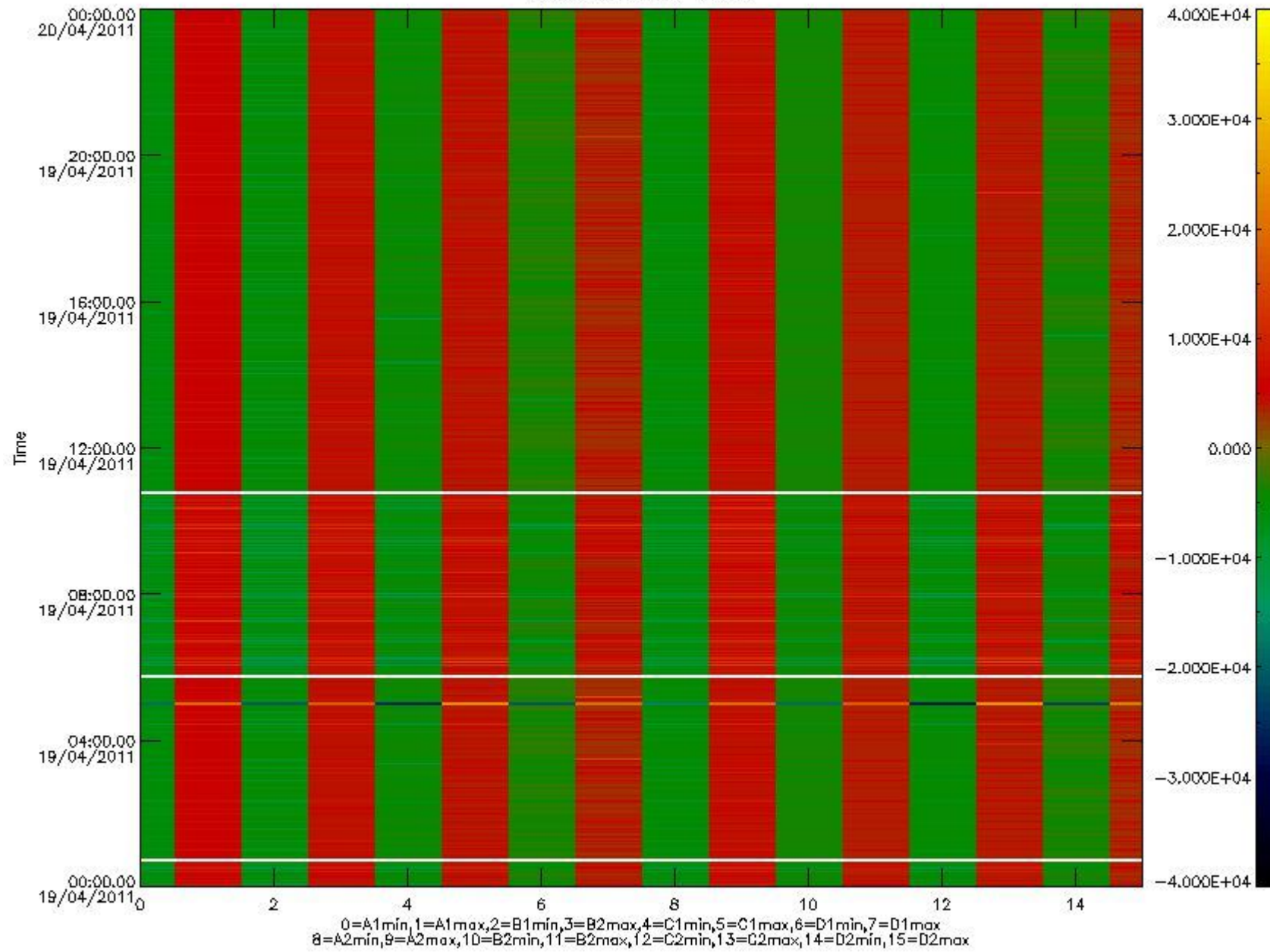


mipas_daily_report_level0_KSPT_L0_4504_N_20110419_10.PNG

The following table shows channel statistics for all channels for this day.

Channel	Min	Max	ADC
A1	-18907	20316	16bit
B1	-21361	18142	16bit
C1	-25885	25815	16bit
D1	-32768	32767	16bit
A2	-16287	20435	16bit
B2	-19790	19069	16bit
C2	-26932	26556	16bit
D2	-32768	32767	16bit

MIPNLOP_MIPSOUPAC_aux_fields_1gm_cal, channel statistics plot
Colour indicates value.



mipas_daily_report_level0_KSPT_L0_4504_N_20110419_11.PNG

0.3 ADF monitoring

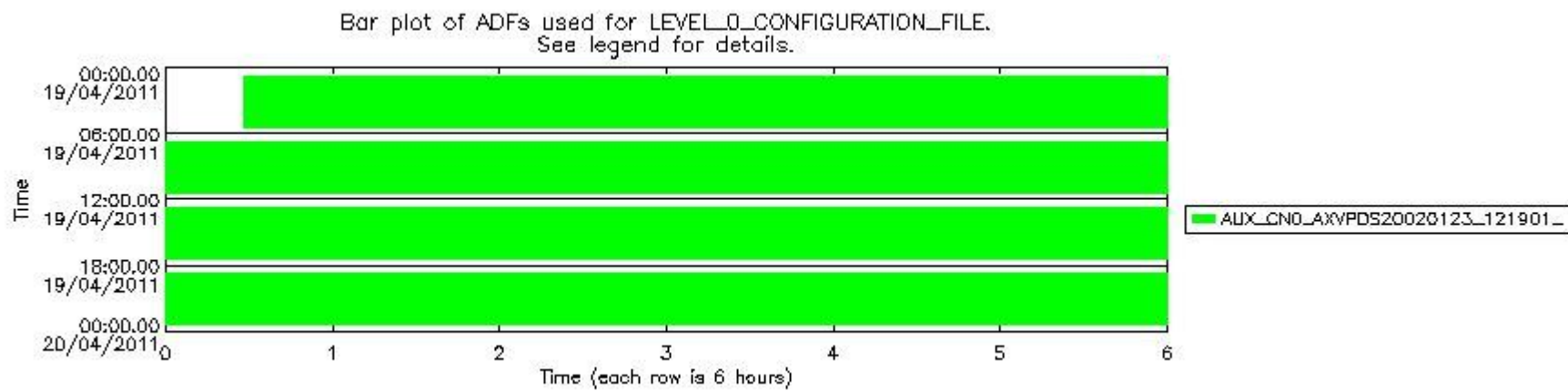
The use of ADFs is shown in two ways:

1. By means of two tables that can be used to find the ADF used for a specific product.
2. By means of plots that show changes in ADF using colours.

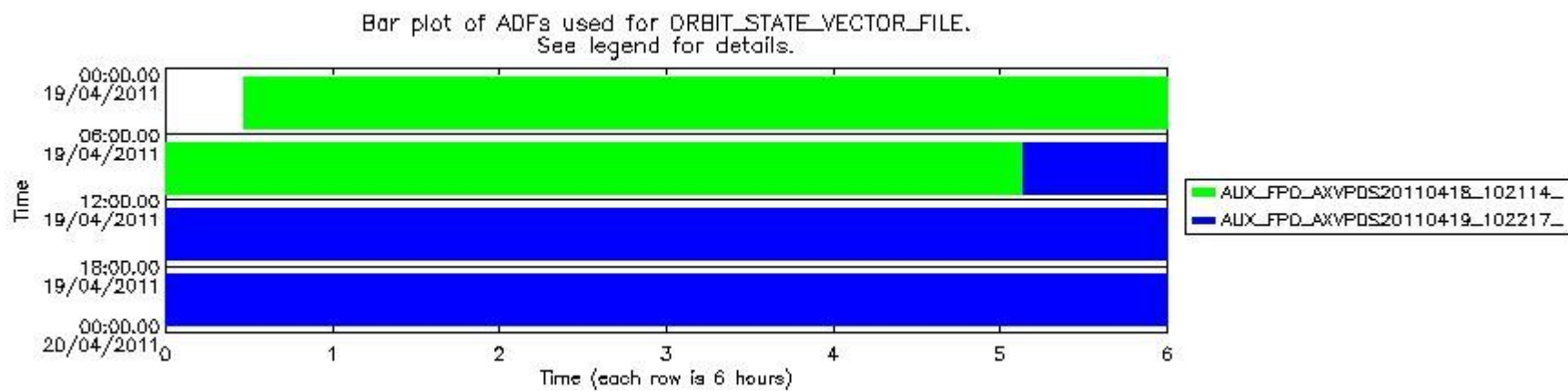
Number	ADF
0	AUX_CN0_AXVPDS20020123_121901_20020101_000000_20200101_000000
1	AUX_FPO_AXVPDS20110418_102114_20110417_183421_20110427_204810
2	AUX_FPO_AXVPDS20110419_102217_20110418_193751_20110428_201126

Number	Product name	#CN0	#FPO
--------	--------------	------	------

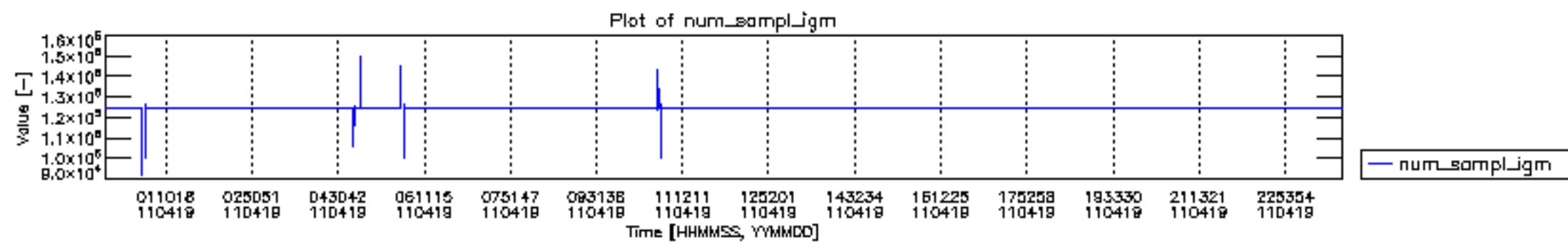
0	MIP_NL__0PNPDE20110419_002805_000057823101_00332_47760_3461.N1	0	1
1	MIP_NL__0PNPDE20110419_020330_000045103101_00333_47761_3462.N1	0	1
2	MIP_NL__0PNPDE20110419_031805_000061843101_00334_47762_3463.N1	0	1
3	MIP_NL__0PNPDE20110419_050035_000060053101_00335_47763_3464.N1	0	1
4	MIP_NL__0PNPDK20110419_064007_000040923101_00336_47764_4890.N1	0	1
5	MIP_NL__0PNPDK20110419_074748_000061083101_00337_47765_4891.N1	0	1
6	MIP_NL__0PNPDK20110419_092852_000060173101_00338_47766_4892.N1	0	1
7	MIP_NL__0PNPDK20110419_110826_000059353101_00339_47767_4893.N1	0	2
8	MIP_NL__0PNPDK20110419_124641_000059163101_00340_47768_4894.N1	0	2
9	MIP_NL__0PNPDK20110419_142444_000058873101_00341_47769_4895.N1	0	2
10	MIP_NL__0PNPDK20110419_160121_000059643101_00342_47770_4896.N1	0	2
11	MIP_NL__0PNPDK20110419_173943_000059083101_00343_47771_4897.N1	0	2
12	MIP_NL__0PNPDK20110419_191638_000061273101_00344_47772_4898.N1	0	2
13	MIP_NL__0PNPDE20110419_205739_000043583101_00345_47773_3465.N1	0	2
14	MIP_NL__0PNPDE20110419_220914_000061633101_00345_47773_3466.N1	0	2
15	MIP_NL__0PNPDE20110419_235100_000059023101_00346_47774_3467.N1	0	2

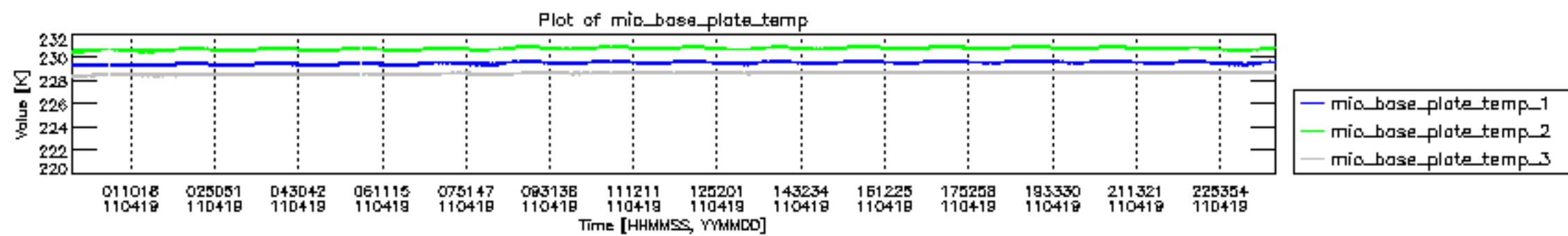


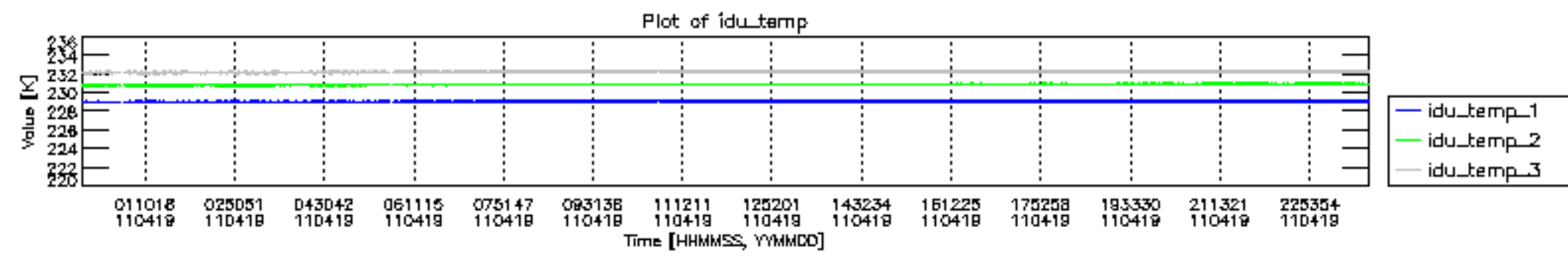
mipas_daily_report_level0_KSPT_L0_4504_N_20110419_12.PNG

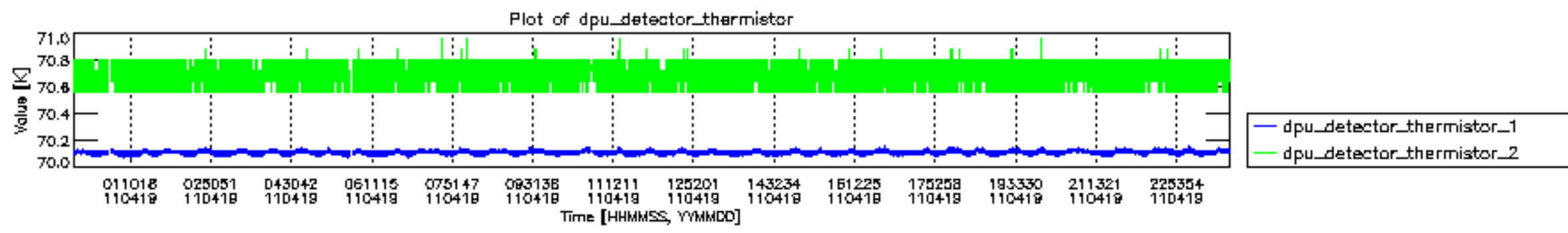


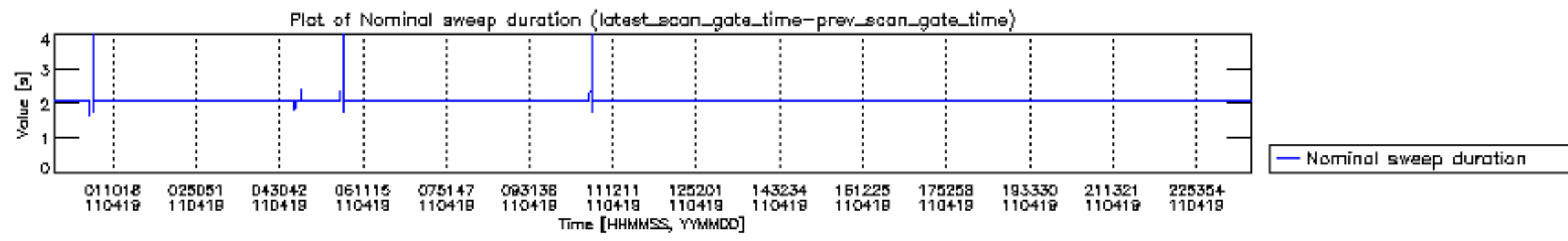
mipas_daily_report_level0_KSPT_L0_4504_N_20110419_13.PNG

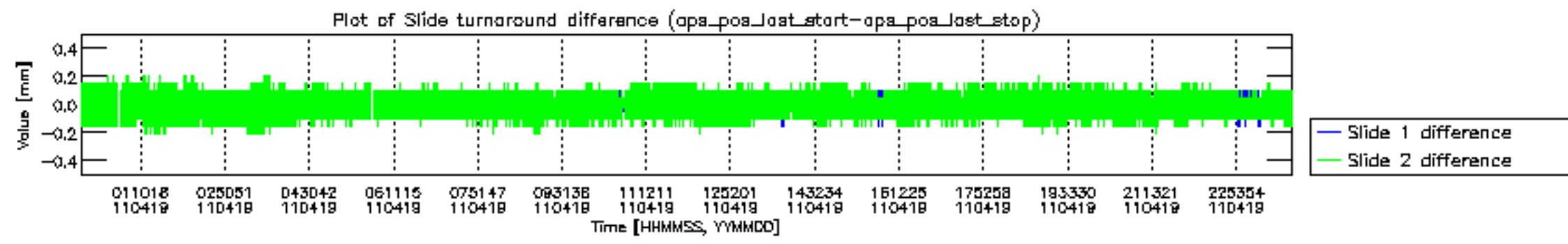


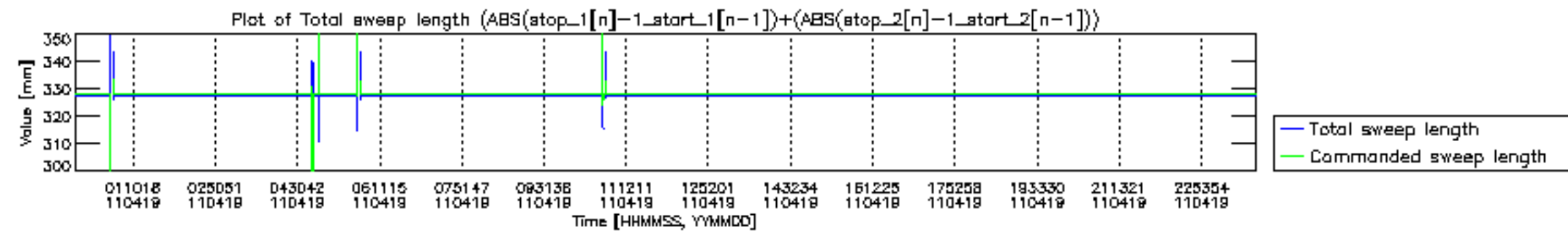


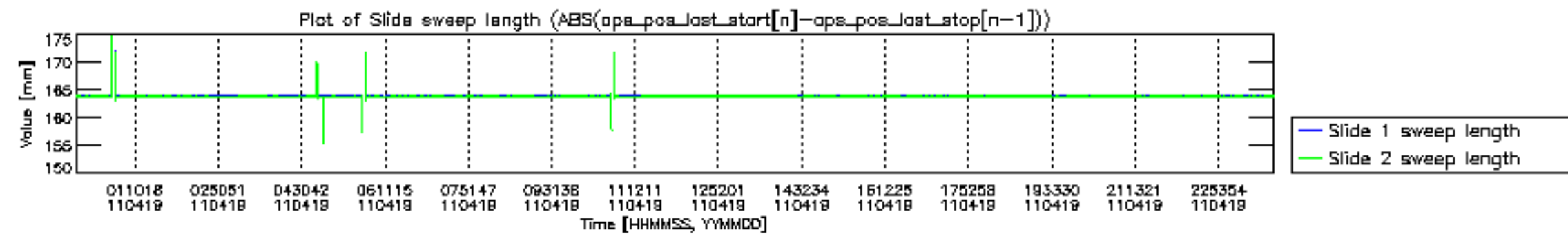


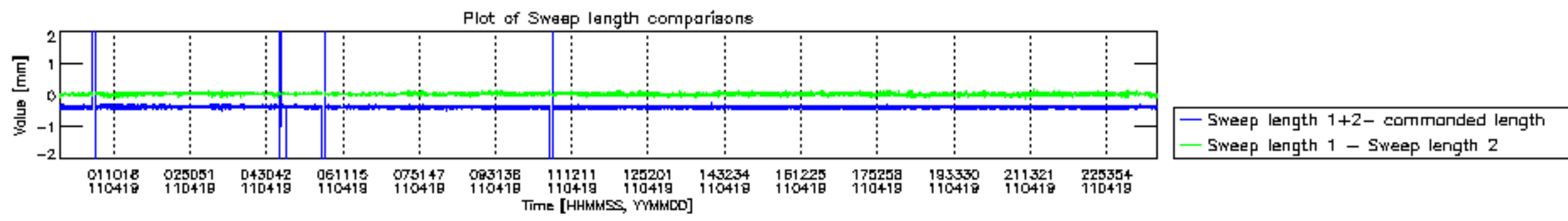


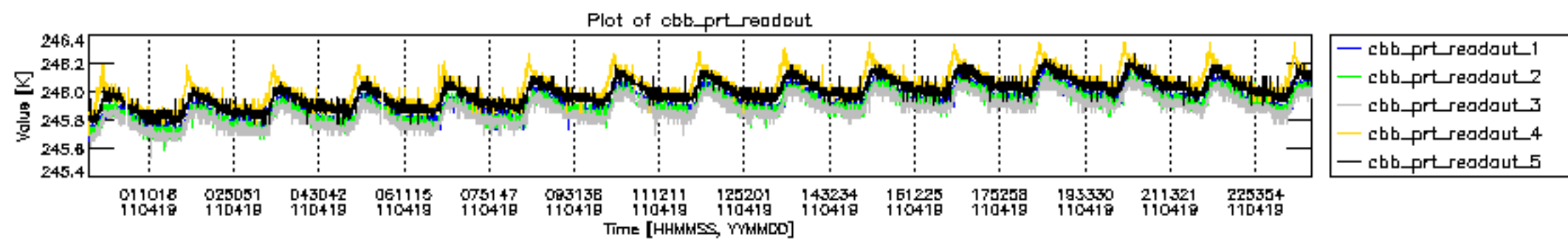


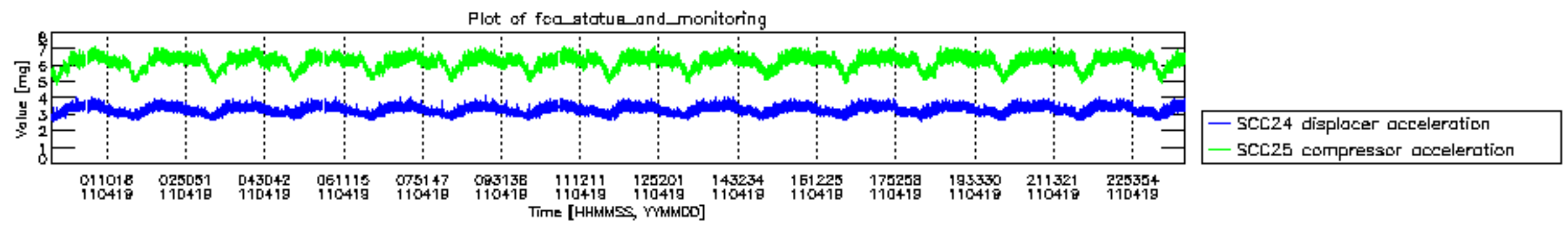












MIPNLOP_MIPSOUPAC_aux_fields_igm_cal, channel statistics plot
 Colour indicates value.

