

0. MIPAS Daily Report for level 0 products

[0.1 General Info](#)

[0.2 Instrument Operational Performance Parameters](#)

[0.3 ADF monitoring](#)

0.1 General Info

This report contains a daily analysis on parameters extracted from MIPAS level 0 data (The MIP_NL__0P product).

0.1.1 Report summary

The table below shows general characteristics of the data that are included into this report.

Item	Value
Report version	v1.6 08-11-2010
Time of report generation	18APR2011 14:50:48
Data source version	KSPT_L0/4504-N
Processing scope for products	13APR2011 00:00:00 to 14APR2011 00:00:00
Start time of first product within scope	13APR2011 00:46:15
Stop time of last product within scope	14APR2011 00:12:07
Total number of level 0 products	15
Number of level 0 products with errors	0

0.1.2 Product Quality Indicators per product

The following table shows a summary for each product used in this report.

#	Product name	Start time	Stop time	Prod err	ISP err sign	ISP miss sign	ISP disc sign	rs sign
0	MIP_NL__0PNPDE20110413_004615_000058453101_00246_47674_3417.N1	13APR2011 00:46:15	13APR2011 02:23:40	0	0	0	0	0
1	MIP_NL__0PNPDE20110413_022240_000045693101_00247_47675_3418.N1	13APR2011 02:22:40	13APR2011 03:38:48	0	0	0	0	0
2	MIP_NL__0PNPDE20110413_033815_000061683101_00248_47676_3419.N1	13APR2011 03:38:15	13APR2011 05:21:03	0	0	0	0	0
3	MIP_NL__0PNPDE20110413_052028_000059883101_00249_47677_3420.N1	13APR2011 05:20:28	13APR2011 07:00:16	0	0	0	0	0
4	MIP_NL__0PNPDK20110413_065942_000040973101_00250_47678_4836.N1	13APR2011 06:59:42	13APR2011 08:07:59	0	0	0	0	0
5	MIP_NL__0PNPDK20110413_080725_000061383101_00251_47679_4837.N1	13APR2011 08:07:25	13APR2011 09:49:43	0	0	0	0	0
6	MIP_NL__0PNPDK20110413_094901_000059723101_00252_47680_4838.N1	13APR2011 09:49:01	13APR2011 11:28:34	0	0	0	0	0
7	MIP_NL__0PNPDK20110413_112752_000059793101_00253_47681_4839.N1	13APR2011 11:27:52	13APR2011 13:07:31	0	0	0	0	0
8	MIP_NL__0PNPDK20110413_130657_000058853101_00254_47682_4840.N1	13APR2011 13:06:57	13APR2011 14:45:02	0	0	0	0	0
9	MIP_NL__0PNPDK20110413_144412_000058553101_00255_47683_4841.N1	13APR2011 14:44:12	13APR2011 16:21:47	0	0	0	0	0
10	MIP_NL__0PNPDK20110413_162051_000059433101_00256_47684_4842.N1	13APR2011 16:20:51	13APR2011 17:59:54	0	0	0	0	0
11	MIP_NL__0PNPDK20110413_175857_000060043101_00257_47685_4843.N1	13APR2011 17:58:57	13APR2011 19:39:01	0	0	0	0	0
12	MIP_NL__0PNPDK20110413_193729_000060663101_00258_47686_4844.N1	13APR2011 19:37:29	13APR2011 21:18:36	0	0	0	0	0
13	MIP_NL__0PNPDE20110413_211704_000043683101_00259_47687_3421.N1	13APR2011 21:17:04	13APR2011 22:29:52	0	0	0	0	0
14	MIP_NL__0PNPDE20110413_222849_000061983101_00259_47687_3422.N1	13APR2011 22:28:49	14APR2011 00:12:07	0	0	0	0	0

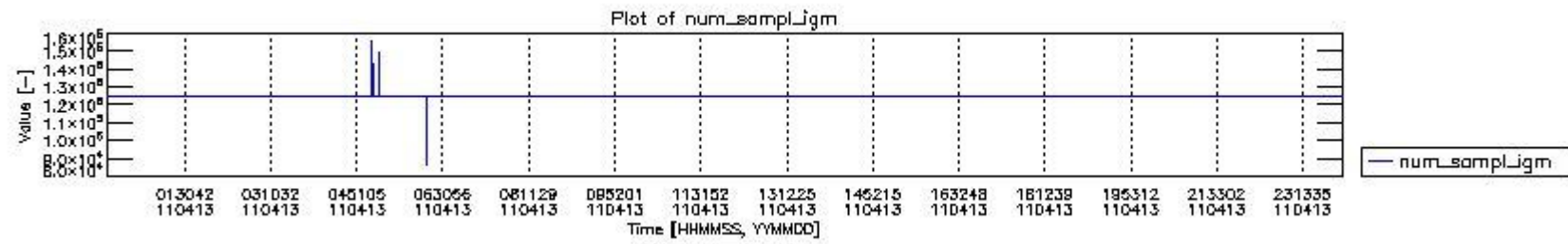
0.2 Instrument Operational Performance Parameters

The following plots give an overview of various instrument parameters for this day. The instrument parameters are part of the auxiliary data field within the source packets of the MIP_NL__0P product. The auxiliary data is normally included twice per interferogram. Note that only the first packet is currently included in monitoring.

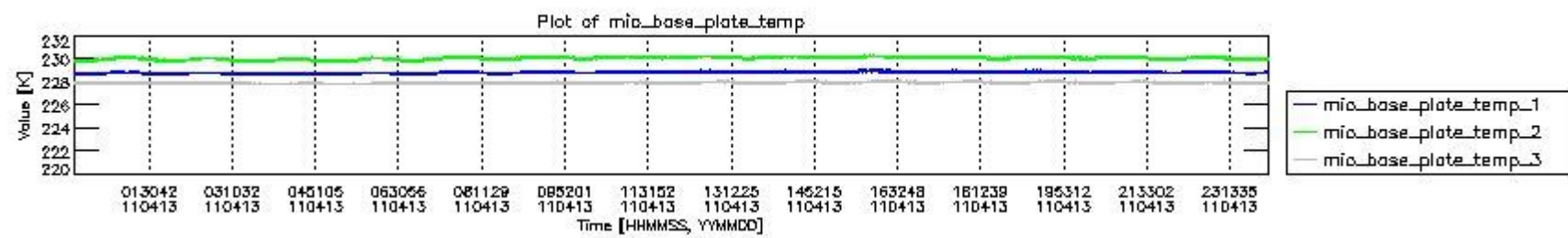
The following table shows the counts of various interferogram number of samples

Number of igm samples	Count [#]	Count [%]
86906	1	0.0024014216
95787	1	0.0024014216
115919	1	0.0024014216

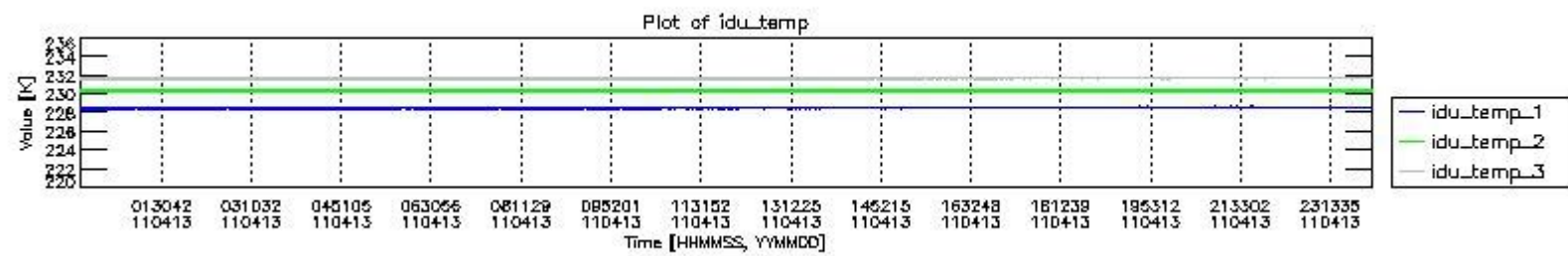
124800	38677	92.879785
124803	2956	7.0986024
127233	1	0.0024014216
130207	1	0.0024014216
147365	1	0.0024014216
149798	1	0.0024014216
150339	1	0.0024014216
155746	1	0.0024014216



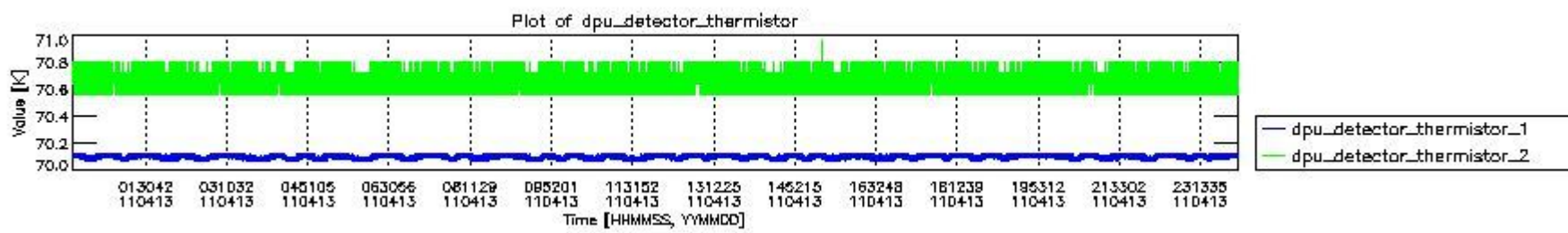
mipas_daily_report_level0_KSPT_L0_4504_N_20110413_0.PNG



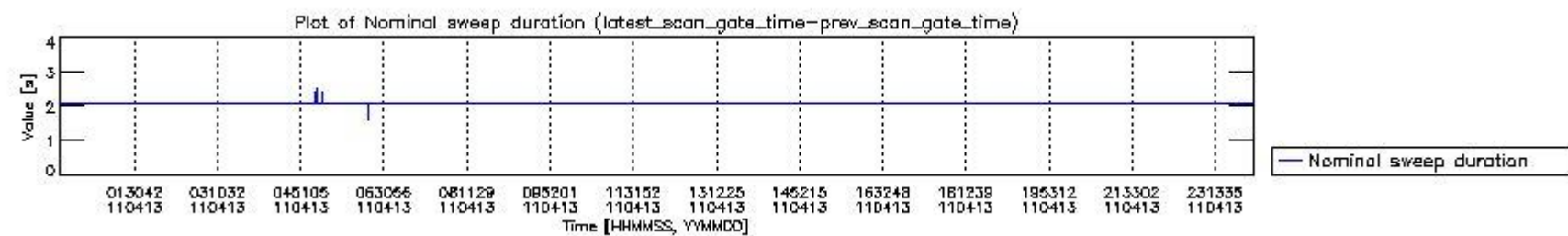
mipas_daily_report_level0_KSPT_L0_4504_N_20110413_1.PNG



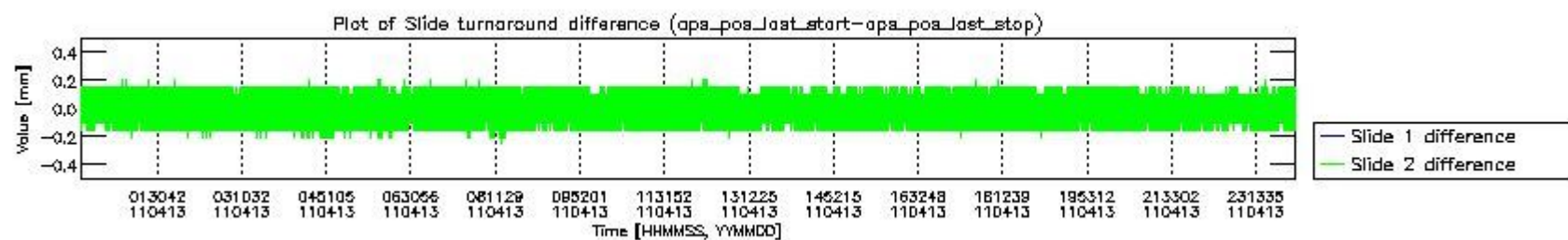
mipas_daily_report_level0_KSPT_L0_4504_N_20110413_2.PNG



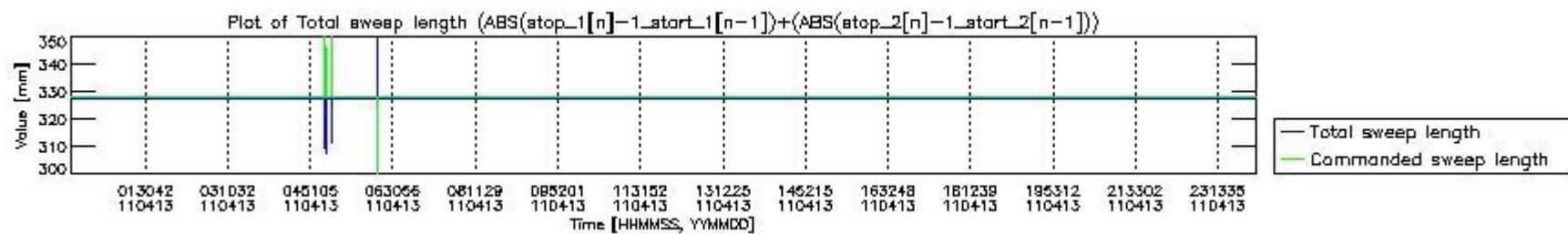
mipas_daily_report_level0_KSPT_L0_4504_N_20110413_3.PNG



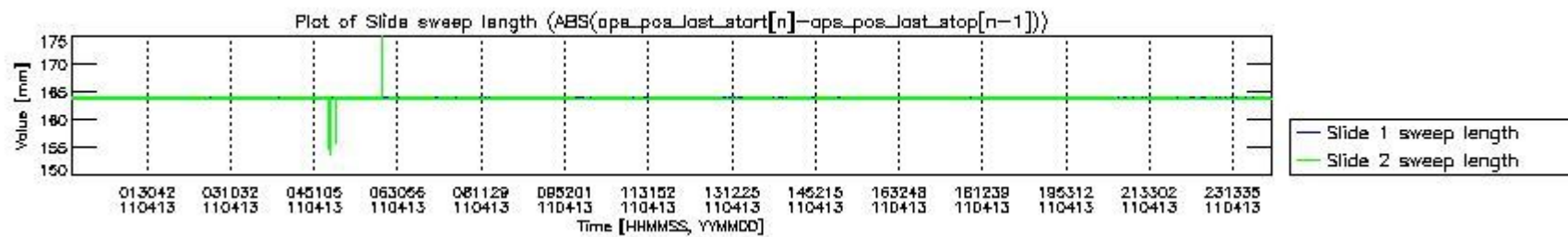
mipas_daily_report_level0_KSPT_L0_4504_N_20110413_4.PNG



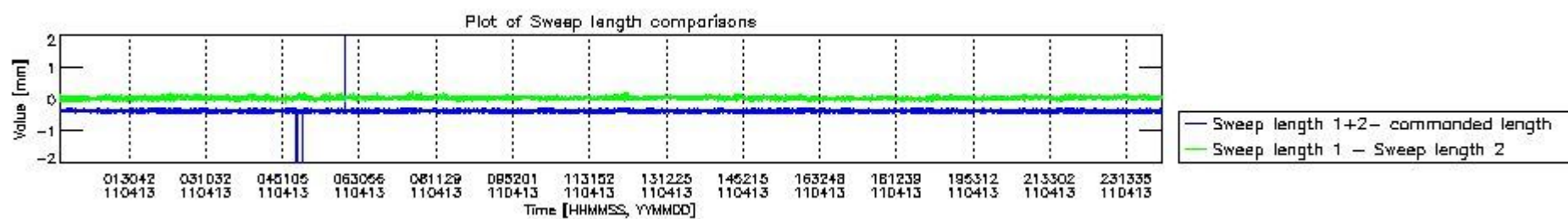
mipas_daily_report_level0_KSPT_L0_4504_N_20110413_5.PNG



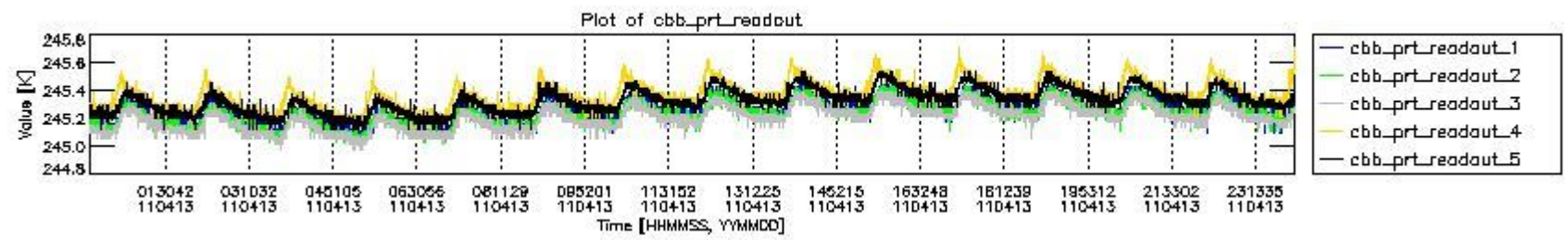
mipas_daily_report_level0_KSPT_L0_4504_N_20110413_6.PNG



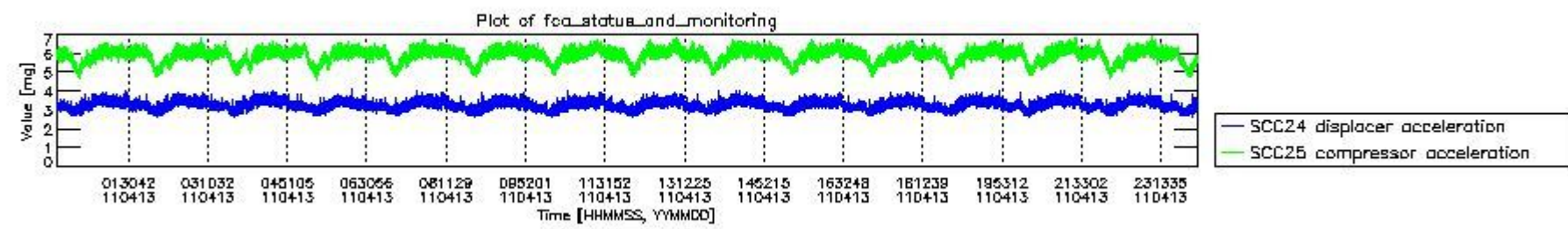
mipas_daily_report_level0_KSPT_L0_4504_N_20110413_7.PNG



mipas_daily_report_level0_KSPT_L0_4504_N_20110413_8.PNG



mipas_daily_report_level0_KSPT_L0_4504_N_20110413_9.PNG

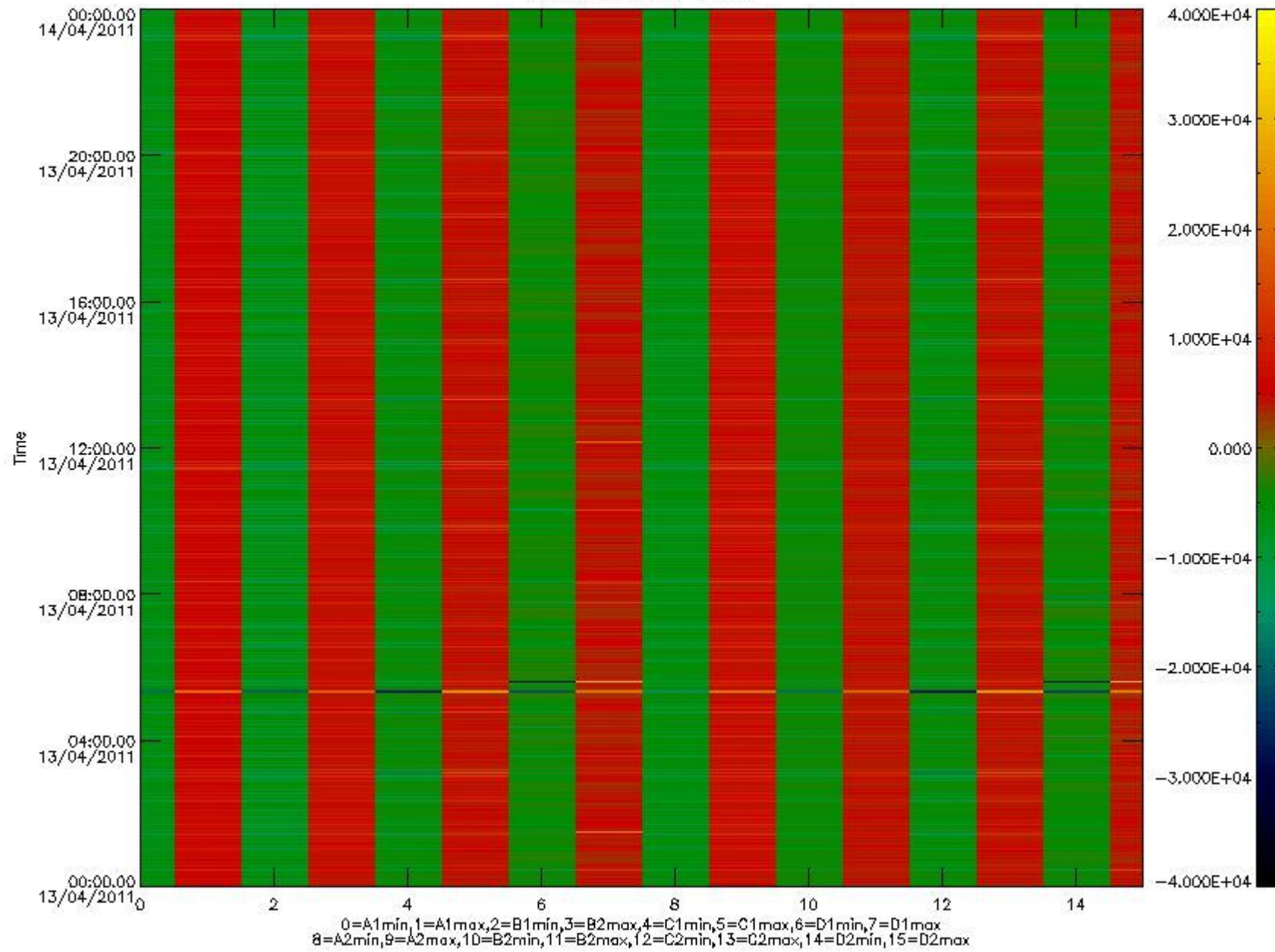


mipas_daily_report_level0_KSPT_L0_4504_N_20110413_10.PNG

The following table shows channel statistics for all channels for this day.

Channel	Min	Max	ADC
A1	-18755	20154	16bit
B1	-20946	17826	16bit
C1	-25136	25026	16bit
D1	-32768	32767	16bit
A2	-16151	20246	16bit
B2	-19346	18681	16bit
C2	-26180	25773	16bit
D2	-32768	32767	16bit

MIPNLOP_MIPSOUPAC_aux_fields_igm_cal, channel statistics plot
Colour indicates value.



mipas_daily_report_level0_KSPT_L0_4504_N_20110413_11.PNG

0.3 ADF monitoring

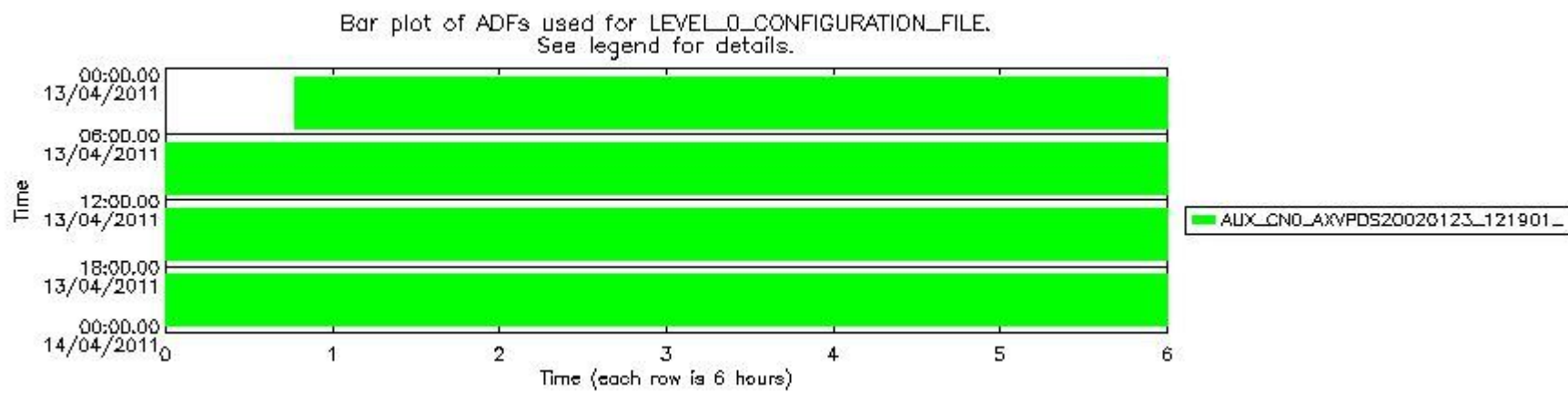
The use of ADFs is shown in two ways:

1. By means of two tables that can be used to find the ADF used for a specific product.
2. By means of plots that show changes in ADF using colours.

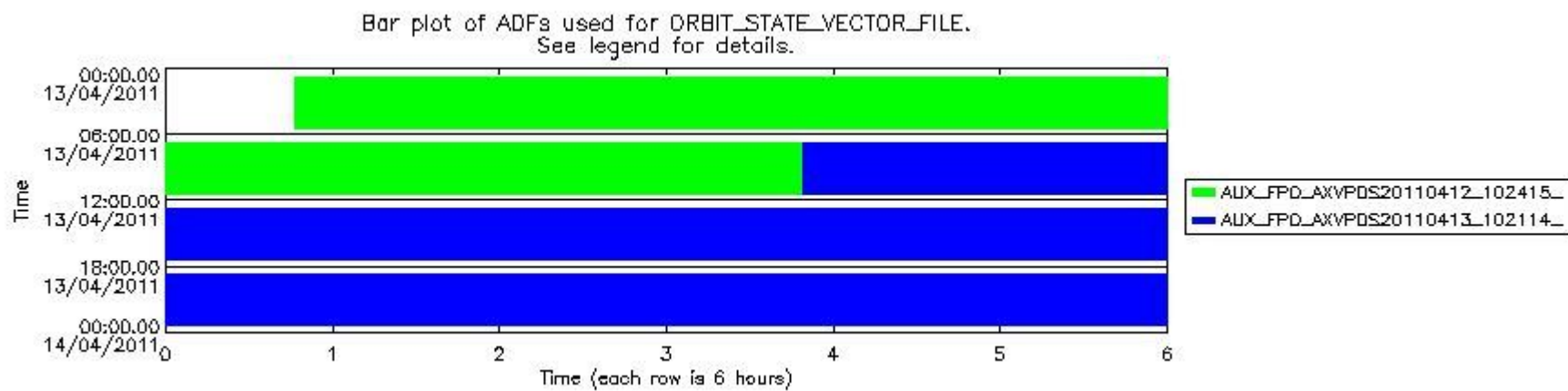
Number	ADF
0	AUX_CN0_AXVPDS20020123_121901_20020101_000000_20200101_000000
1	AUX_FPO_AXVPDS20110412_102415_20110411_185417_20110421_210806
2	AUX_FPO_AXVPDS20110413_102114_20110412_195747_20110422_203122

Number	Product name	#CN0	#FPO
--------	--------------	------	------

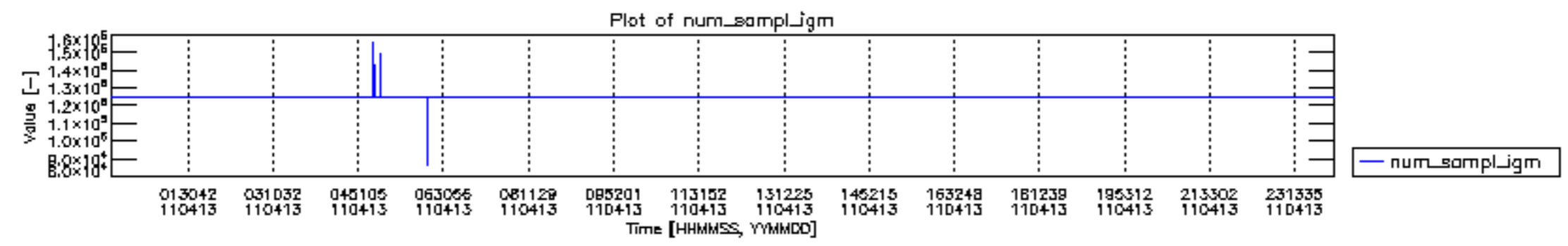
0	MIP_NL__0PNPDE20110413_004615_000058453101_00246_47674_3417.N1	0	1
1	MIP_NL__0PNPDE20110413_022240_000045693101_00247_47675_3418.N1	0	1
2	MIP_NL__0PNPDE20110413_033815_000061683101_00248_47676_3419.N1	0	1
3	MIP_NL__0PNPDE20110413_052028_000059883101_00249_47677_3420.N1	0	1
4	MIP_NL__0PNPDK20110413_065942_000040973101_00250_47678_4836.N1	0	1
5	MIP_NL__0PNPDK20110413_080725_000061383101_00251_47679_4837.N1	0	1
6	MIP_NL__0PNPDK20110413_094901_000059723101_00252_47680_4838.N1	0	2
7	MIP_NL__0PNPDK20110413_112752_000059793101_00253_47681_4839.N1	0	2
8	MIP_NL__0PNPDK20110413_130657_000058853101_00254_47682_4840.N1	0	2
9	MIP_NL__0PNPDK20110413_144412_000058553101_00255_47683_4841.N1	0	2
10	MIP_NL__0PNPDK20110413_162051_000059433101_00256_47684_4842.N1	0	2
11	MIP_NL__0PNPDK20110413_175857_000060043101_00257_47685_4843.N1	0	2
12	MIP_NL__0PNPDK20110413_193729_000060663101_00258_47686_4844.N1	0	2
13	MIP_NL__0PNPDE20110413_211704_000043683101_00259_47687_3421.N1	0	2
14	MIP_NL__0PNPDE20110413_222849_000061983101_00259_47687_3422.N1	0	2

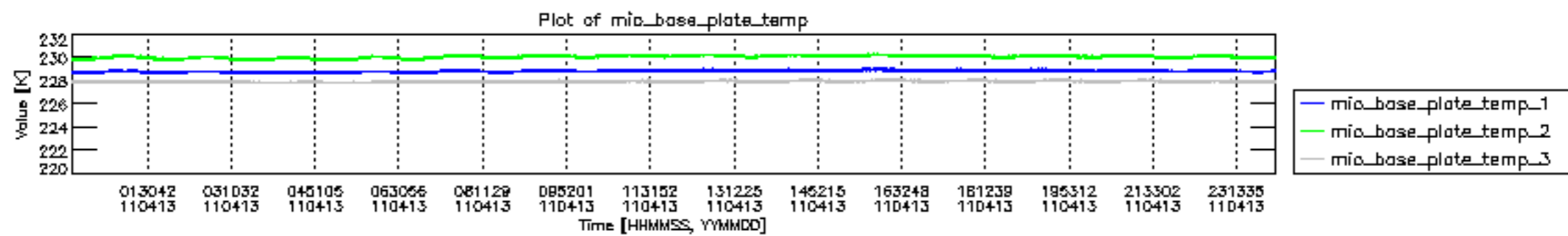


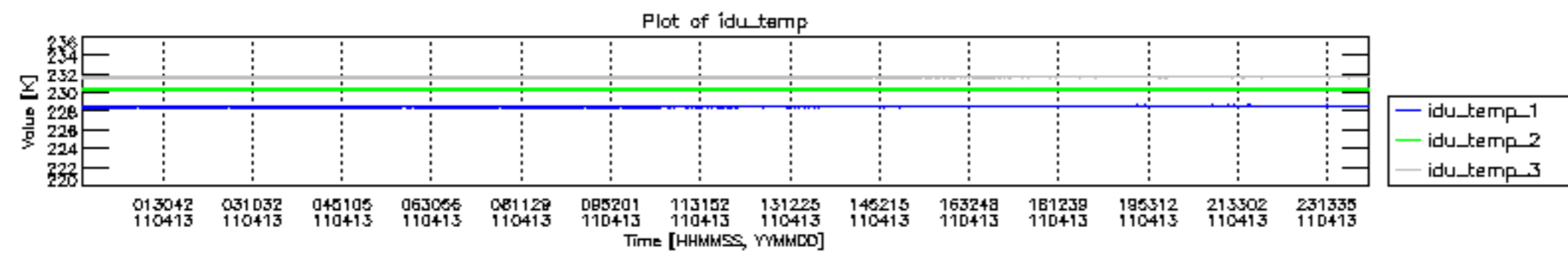
mipas_daily_report_level0_KSPT_L0_4504_N_20110413_12.PNG

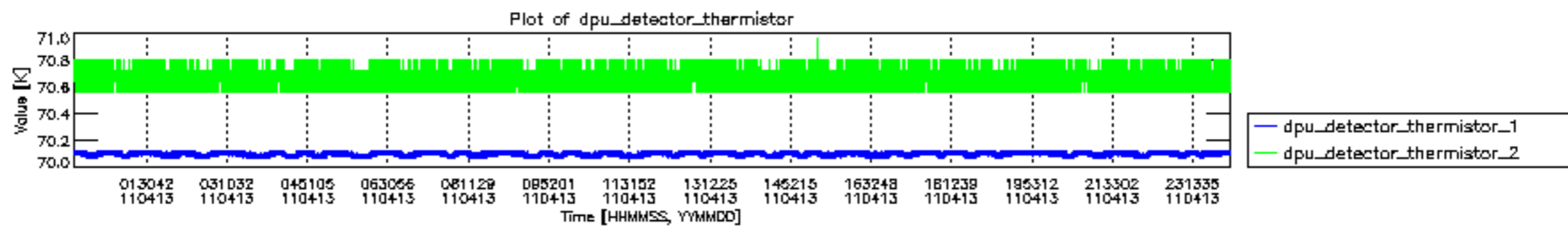


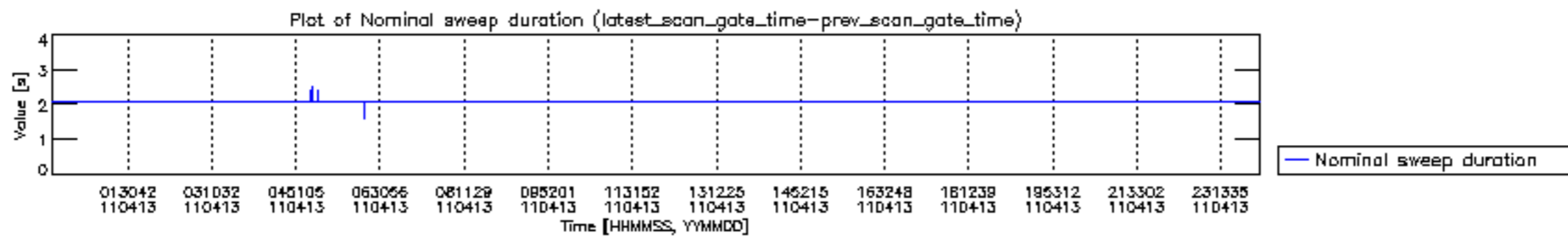
mipas_daily_report_level0_KSPT_L0_4504_N_20110413_13.PNG

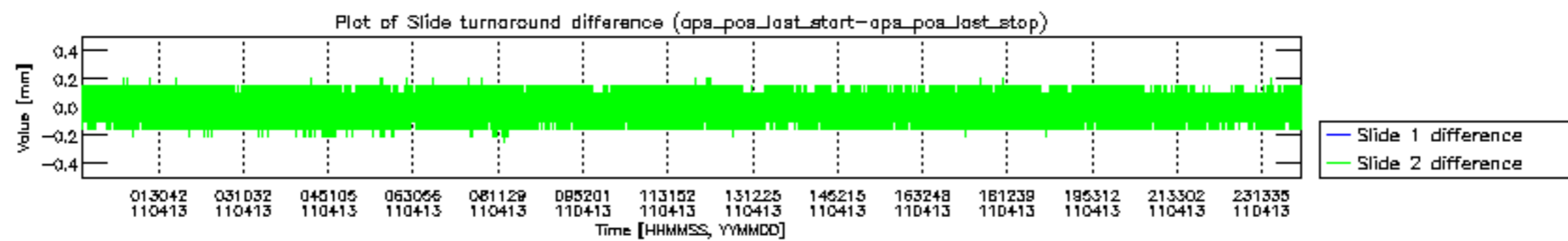


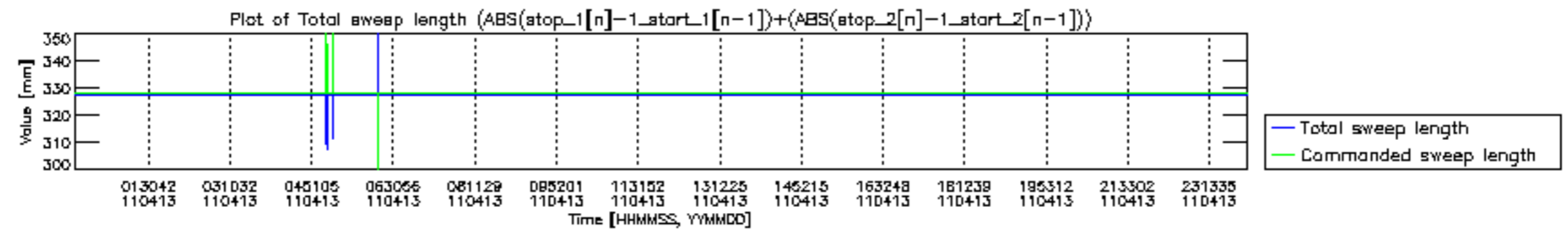


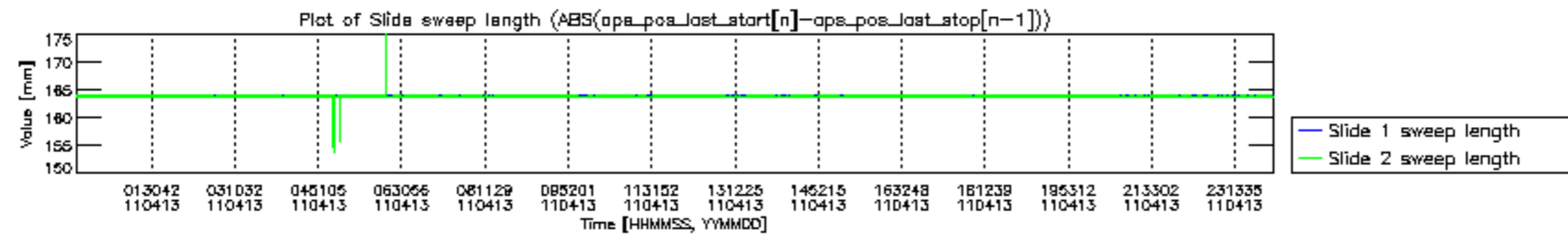


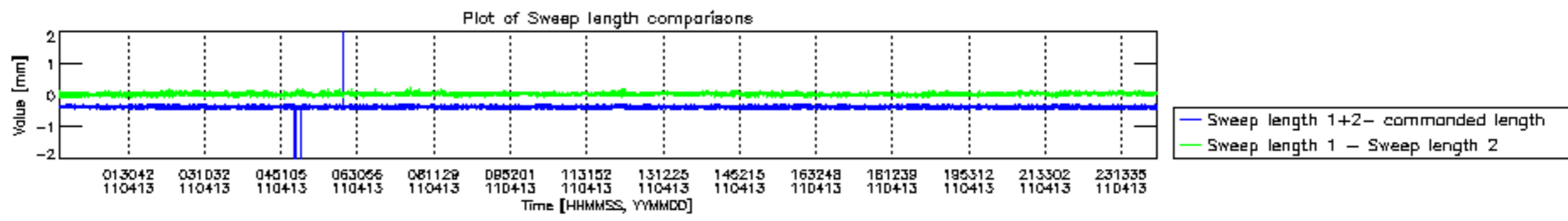


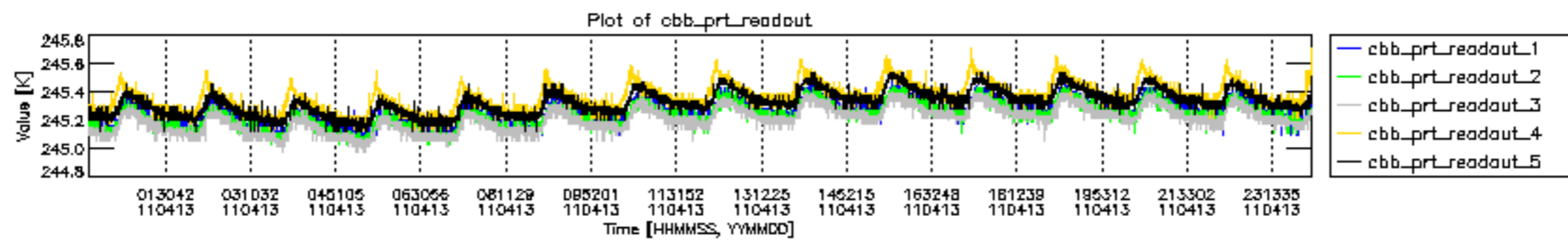


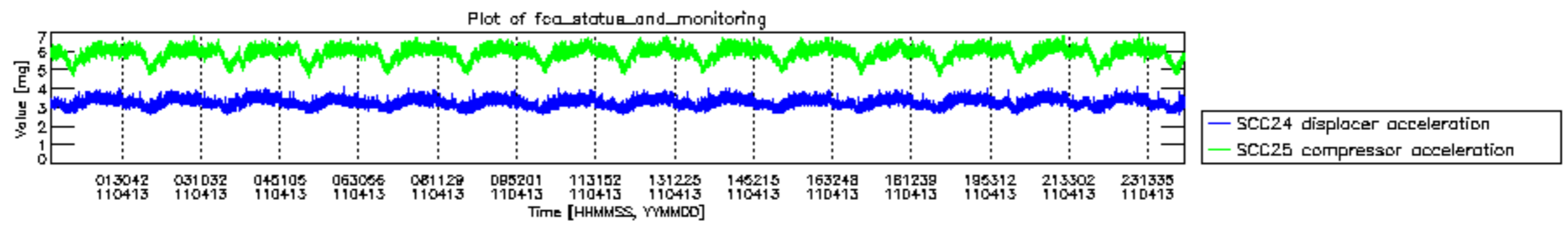












MIPNLOP_MIPSOUPAC_aux_fields_igm_cal, channel statistics plot
 Colour indicates value.

