

0. MIPAS Daily Report for level 0 products

[0.1 General Info](#)

[0.2 Instrument Operational Performance Parameters](#)

[0.3 ADF monitoring](#)

0.1 General Info

This report contains a daily analysis on parameters extracted from MIPAS level 0 data (The MIP_NL__0P product).

0.1.1 Report summary

The table below shows general characteristics of the data that are included into this report.

Item	Value
Report version	v1.6 08-11-2010
Time of report generation	11APR2011 05:24:44
Data source version	KSPT_L0/4504-N
Processing scope for products	06APR2011 00:00:00 to 07APR2011 00:00:00
Start time of first product within scope	06APR2011 09:20:14
Stop time of last product within scope	07APR2011 01:08:00
Total number of level 0 products	10
Number of level 0 products with errors	0

0.1.2 Product Quality Indicators per product

The following table shows a summary for each product used in this report.

#	Product name	Start time	Stop time	Prod err	ISP err sign	ISP miss sign	ISP disc sign	rs sign
0	MIP_NL__0PNPDK20110406_092014_000050143101_00151_47579_4750.N1	06APR2011 09:20:14	06APR2011 10:43:48	0	0	0	0	0
1	MIP_NL__0PNPDK20110406_104256_000059993101_00152_47580_4751.N1	06APR2011 10:42:56	06APR2011 12:22:55	0	0	0	0	0
2	MIP_NL__0PNPDK20110406_122201_000059103101_00153_47581_4752.N1	06APR2011 12:22:01	06APR2011 14:00:31	0	0	0	0	0
3	MIP_NL__0PNPDK20110406_135913_000058223101_00154_47582_4753.N1	06APR2011 13:59:13	06APR2011 15:36:15	0	0	0	0	0
4	MIP_NL__0PNPDK20110406_153456_000061833101_00155_47583_4754.N1	06APR2011 15:34:56	06APR2011 17:17:59	0	0	0	0	0
5	MIP_NL__0PNPDK20110406_171644_000059683101_00156_47584_4755.N1	06APR2011 17:16:44	06APR2011 18:56:12	0	0	0	0	0
6	MIP_NL__0PNPDK20110406_185514_000059833101_00157_47585_4756.N1	06APR2011 18:55:14	06APR2011 20:34:57	0	0	0	0	0
7	MIP_NL__0PNPDE20110406_203327_000044083101_00158_47586_3362.N1	06APR2011 20:33:27	06APR2011 21:46:54	0	0	0	0	0
8	MIP_NL__0PNPDE20110406_214556_000061373101_00158_47586_3363.N1	06APR2011 21:45:56	06APR2011 23:28:13	0	0	0	0	0
9	MIP_NL__0PNPDE20110406_232709_000060523101_00159_47587_3364.N1	06APR2011 23:27:09	07APR2011 01:08:00	0	0	0	0	0

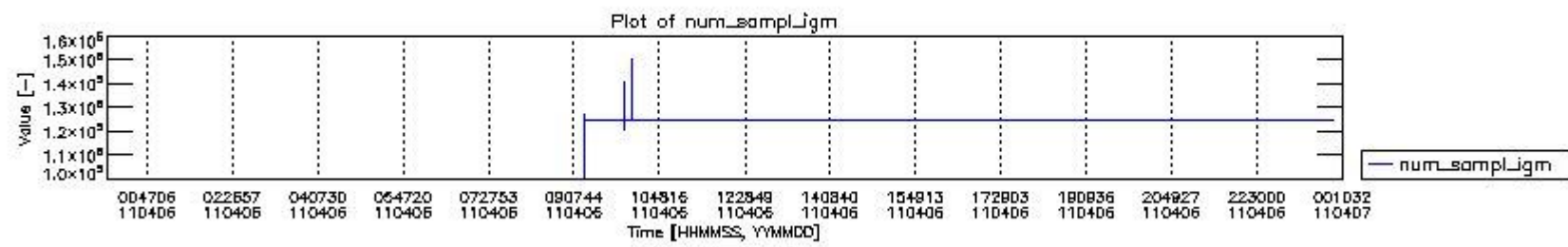
0.2 Instrument Operational Performance Parameters

The following plots give an overview of various instrument parameters for this day. The instrument parameters are part of the auxiliary data field within the source packets of the MIP_NL__0P product. The auxiliary data is normally included twice per interferogram. Note that only the first packet is currently included in monitoring.

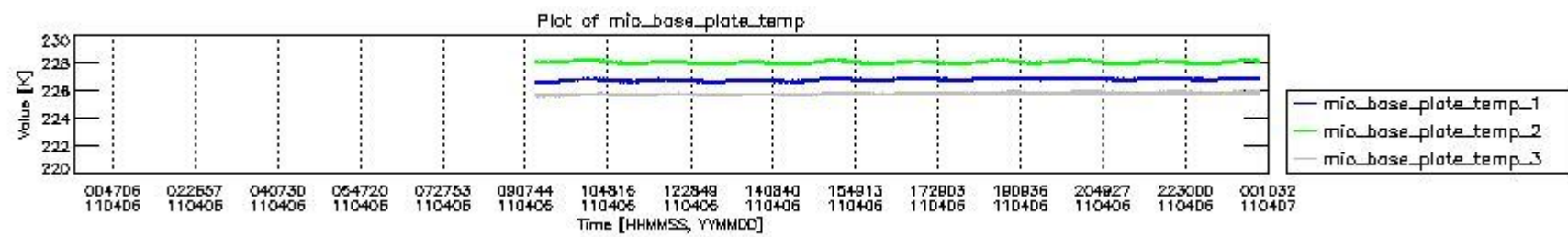
The following table shows the counts of various interferogram number of samples

Number of igm samples	Count [#]	Count [%]
100706	1	0.0039274213
120468	1	0.0039274213
124800	23659	92.918859
124803	1794	7.0457937
125958	1	0.0039274213
127116	1	0.0039274213
127531	1	0.0039274213
136268	1	0.0039274213

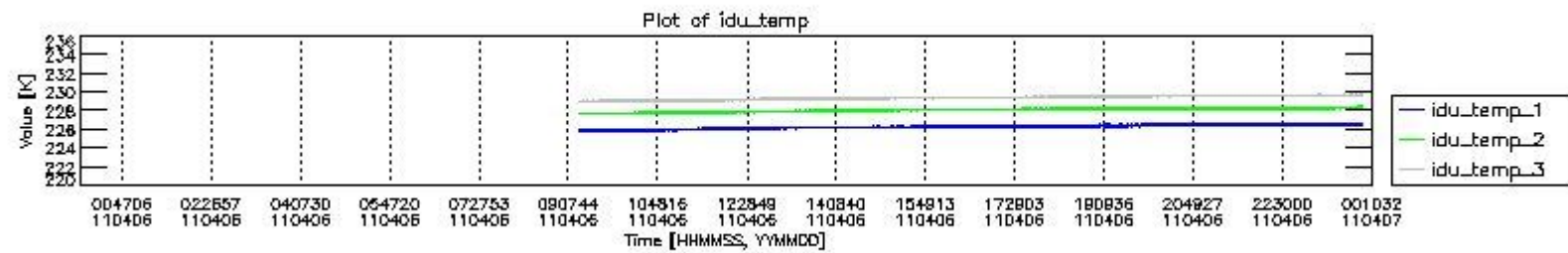
140600	1	0.0039274213
147663	1	0.0039274213
150394	1	0.0039274213



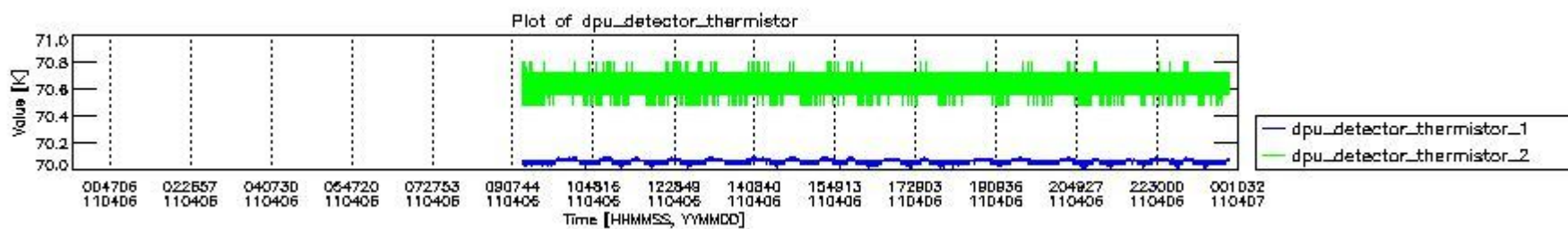
mipas_daily_report_level0_KSPT_L0_4504_N_20110406_0.PNG



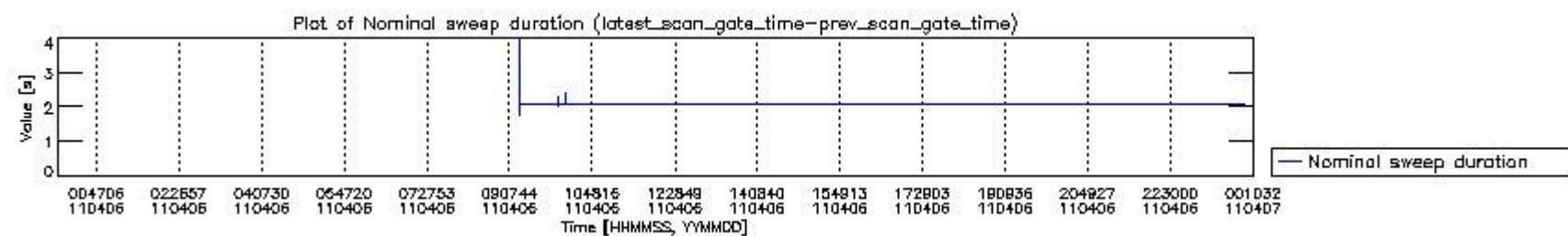
mipas_daily_report_level0_KSPT_L0_4504_N_20110406_1.PNG



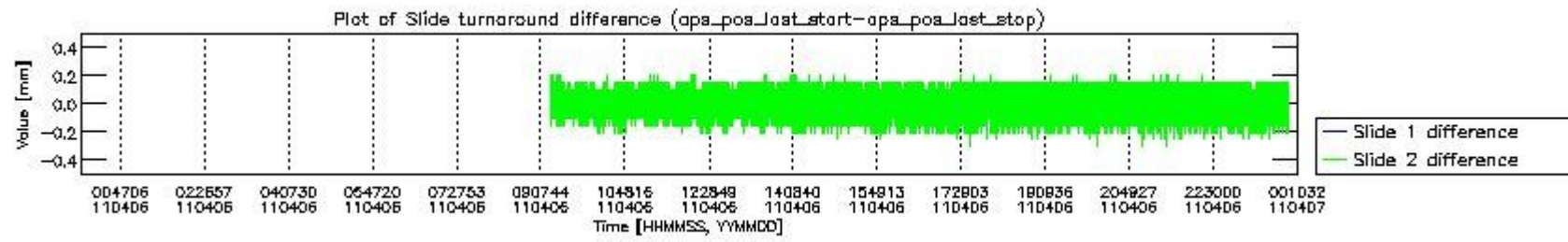
mipas_daily_report_level0_KSPT_L0_4504_N_20110406_2.PNG



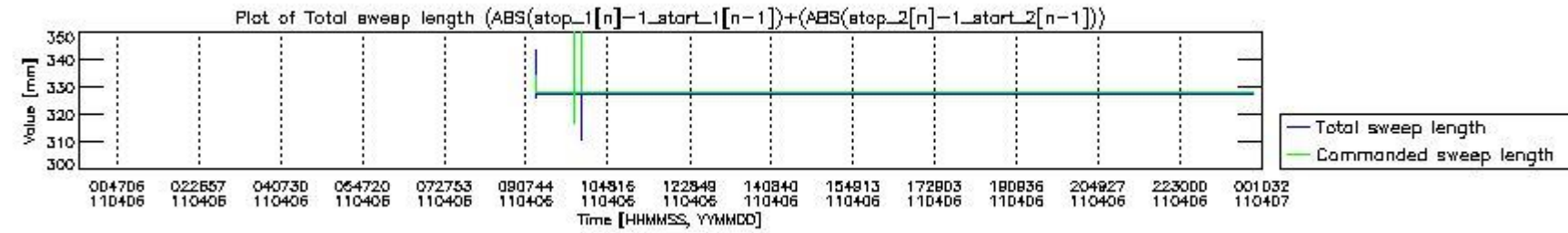
mipas_daily_report_level0_KSPT_L0_4504_N_20110406_3.PNG



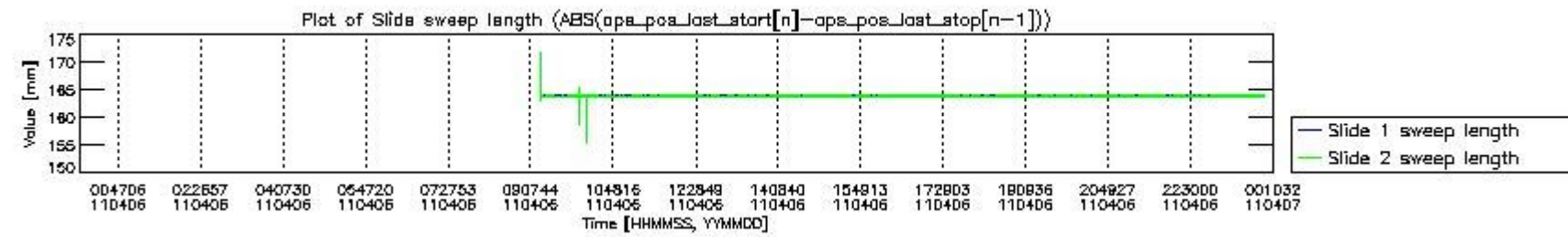
mipas_daily_report_level0_KSPT_L0_4504_N_20110406_4.PNG



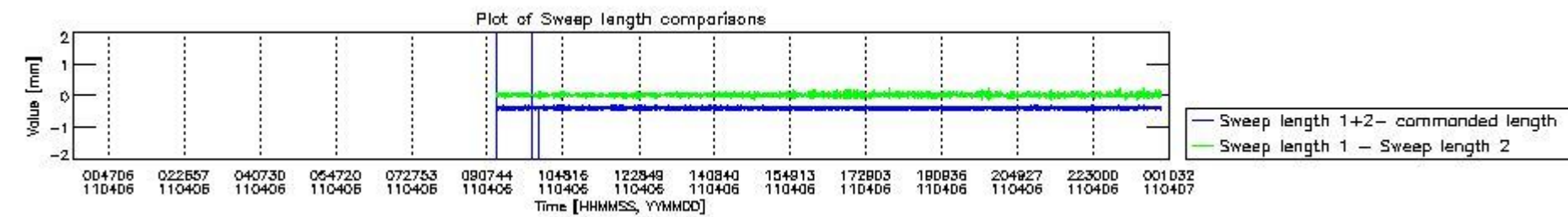
mipas_daily_report_level0_KSPT_L0_4504_N_20110406_5.PNG



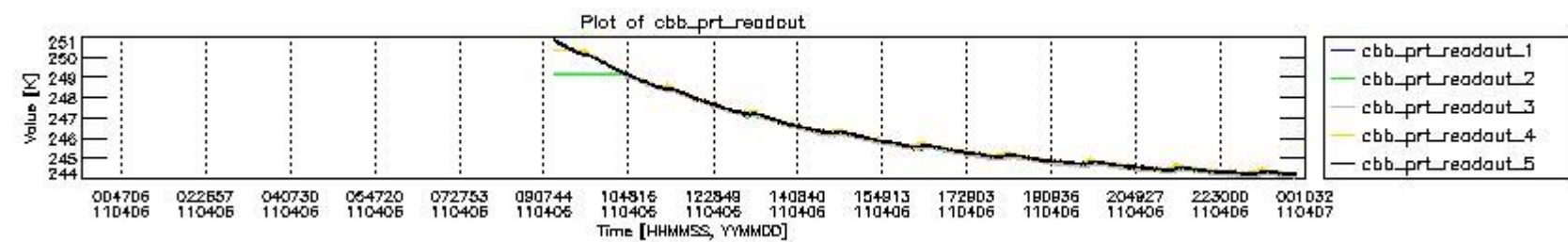
mipas_daily_report_level0_KSPT_L0_4504_N_20110406_6.PNG



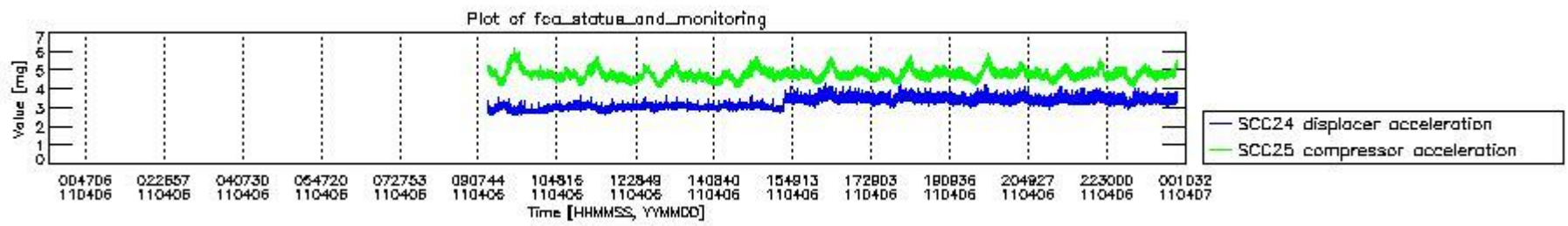
mipas_daily_report_level0_KSPT_L0_4504_N_20110406_7.PNG



mipas_daily_report_level0_KSPT_L0_4504_N_20110406_8.PNG



mipas_daily_report_level0_KSPT_L0_4504_N_20110406_9.PNG

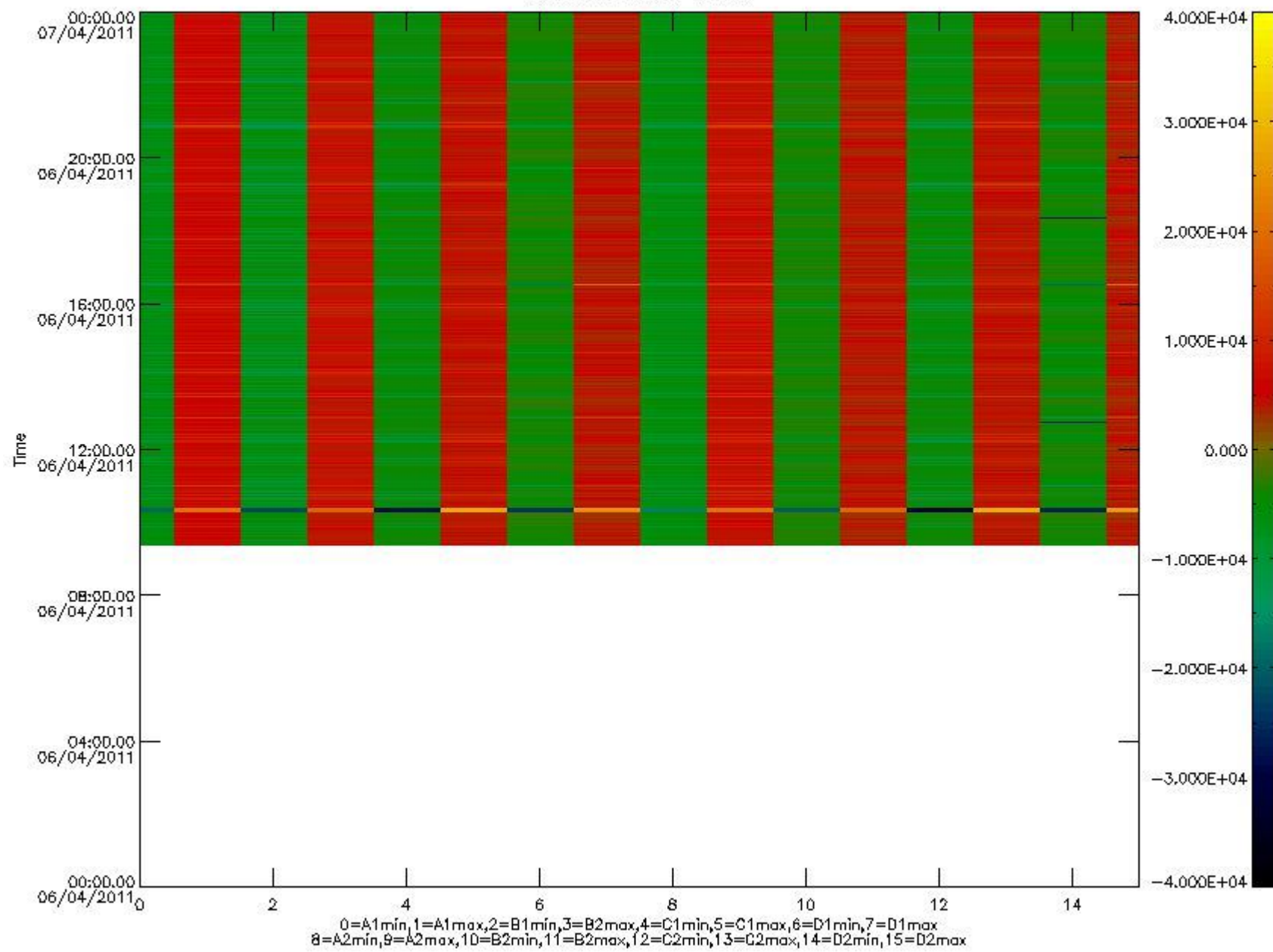


mipas_daily_report_level0_KSPT_L0_4504_N_20110406_10.PNG

The following table shows channel statistics for all channels for this day.

Channel	Min	Max	ADC
A1	-19843	21684	16bit
B1	-22696	19325	16bit
C1	-28992	28781	16bit
D1	-32768	32767	16bit
A2	-17007	21781	16bit
B2	-20857	20139	16bit
C2	-30243	29749	16bit
D2	-32768	32767	16bit

MIPNLOP_MIPSOUPAC_aux_fields_igm_cal, channel statistics plot
Colour indicates value.



mipas_daily_report_level0_KSPT_L0_4504_N_20110406_11.PNG

0.3 ADF monitoring

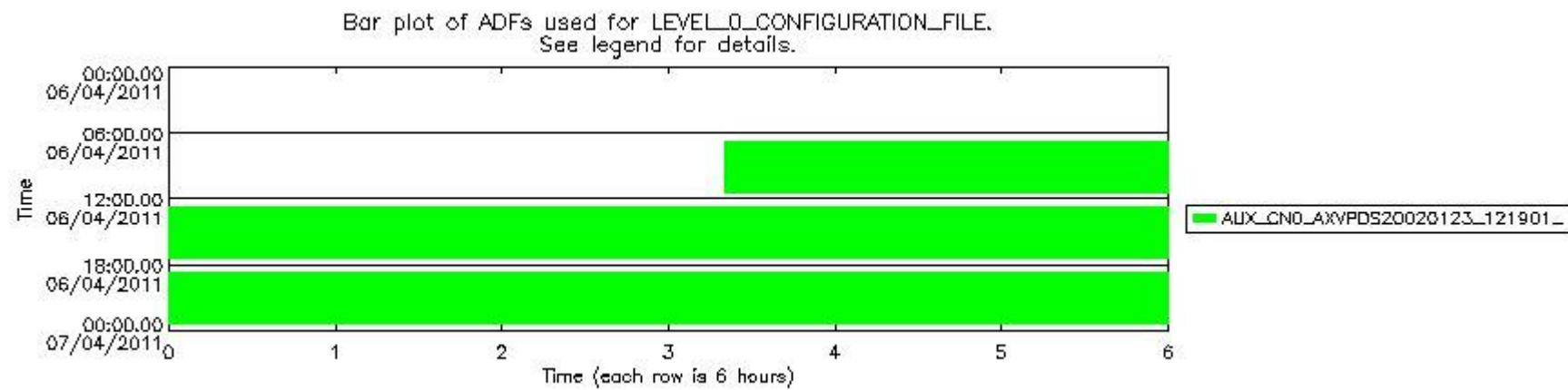
The use of ADFs is shown in two ways:

1. By means of two tables that can be used to find the ADF used for a specific product.
2. By means of plots that show changes in ADF using colours.

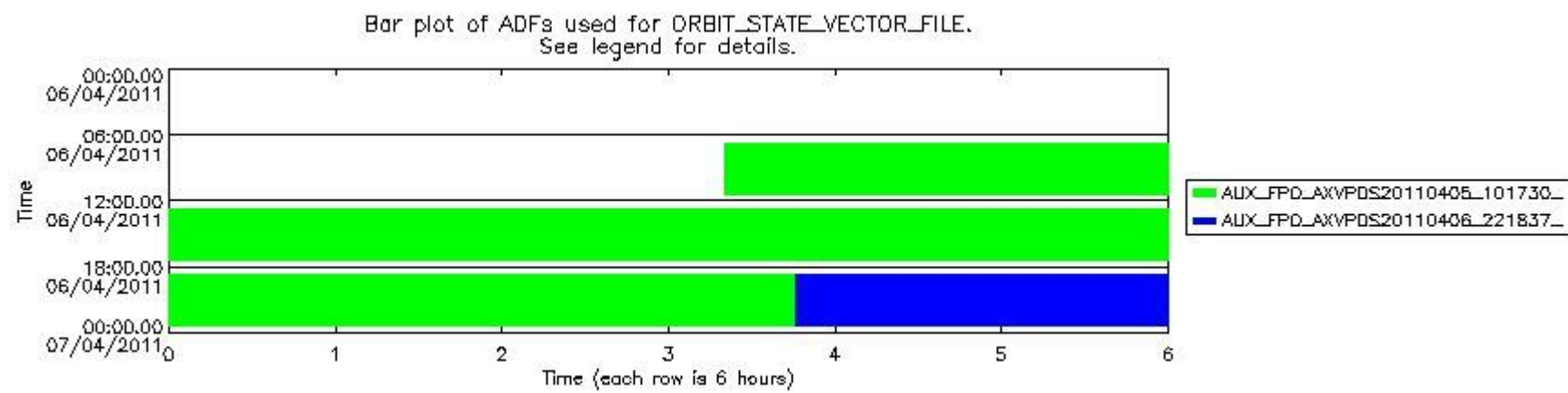
Number	ADF
0	AUX_CN0_AXVPDS20020123_121901_20020101_000000_20200101_000000
1	AUX_FPO_AXVPDS20110405_101730_20110404_195058_20110414_202433
2	AUX_FPO_AXVPDS20110406_221837_20110405_191414_20110415_212803

Number	Product name	#CN0	#FPO
--------	--------------	------	------

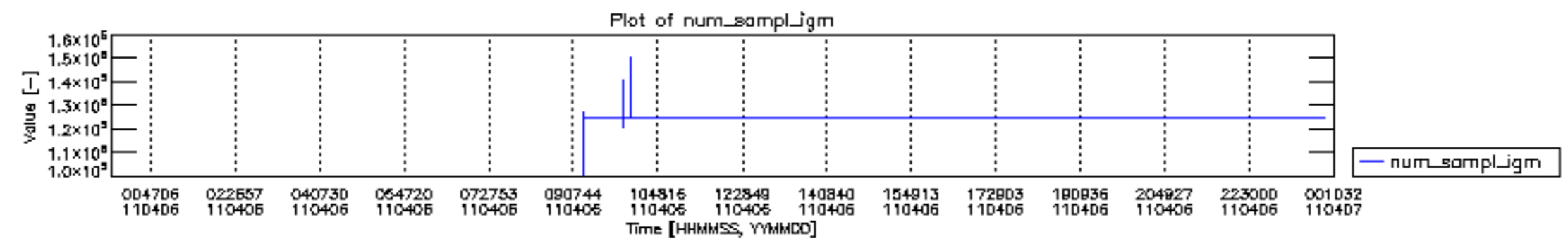
0	MIP_NL__0PNPDK20110406_092014_000050143101_00151_47579_4750.N1	0	1
1	MIP_NL__0PNPDK20110406_104256_000059993101_00152_47580_4751.N1	0	1
2	MIP_NL__0PNPDK20110406_122201_000059103101_00153_47581_4752.N1	0	1
3	MIP_NL__0PNPDK20110406_135913_000058223101_00154_47582_4753.N1	0	1
4	MIP_NL__0PNPDK20110406_153456_000061833101_00155_47583_4754.N1	0	1
5	MIP_NL__0PNPDK20110406_171644_000059683101_00156_47584_4755.N1	0	1
6	MIP_NL__0PNPDK20110406_185514_000059833101_00157_47585_4756.N1	0	1
7	MIP_NL__0PNPDE20110406_203327_000044083101_00158_47586_3362.N1	0	1
8	MIP_NL__0PNPDE20110406_214556_000061373101_00158_47586_3363.N1	0	2
9	MIP_NL__0PNPDE20110406_232709_000060523101_00159_47587_3364.N1	0	2

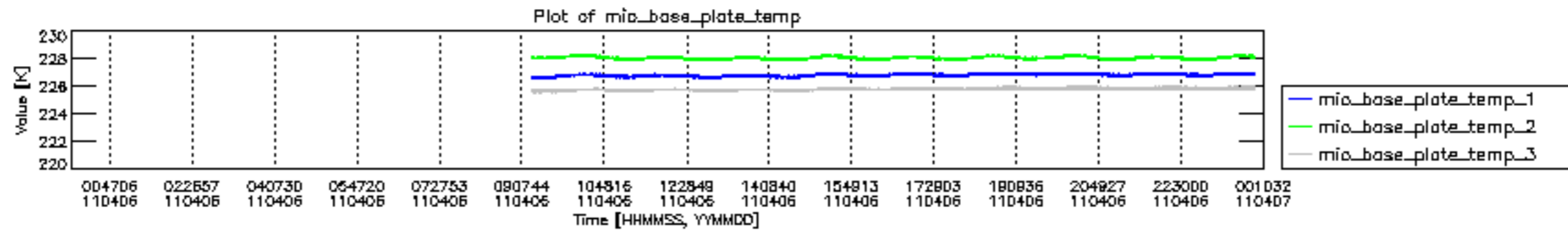


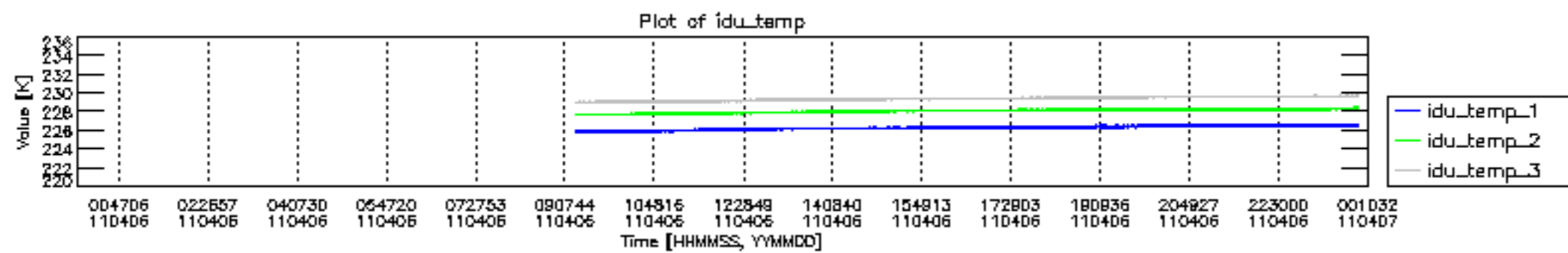
mipas_daily_report_level0_KSPT_L0_4504_N_20110406_12.PNG

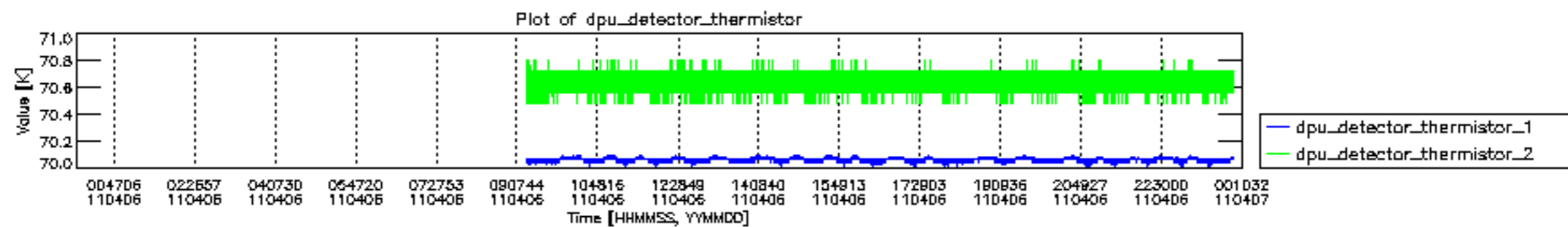


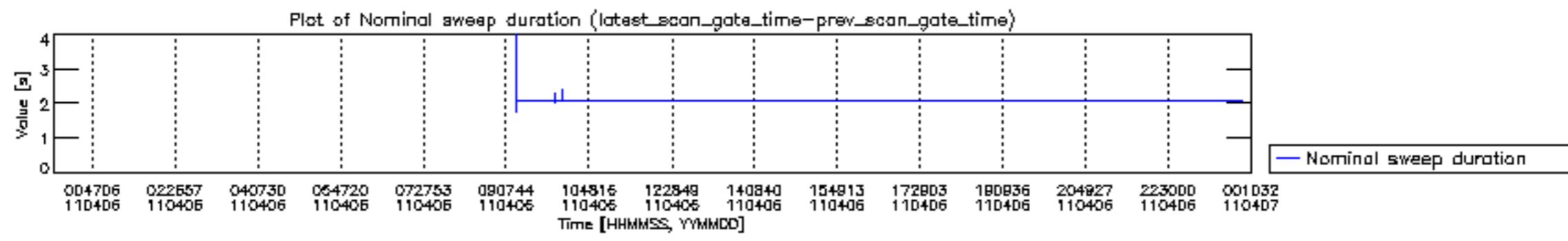
mipas_daily_report_level0_KSPT_L0_4504_N_20110406_13.PNG

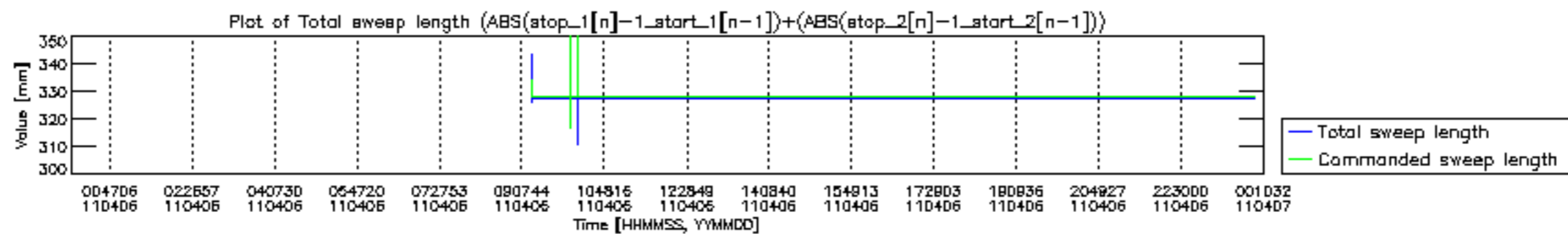


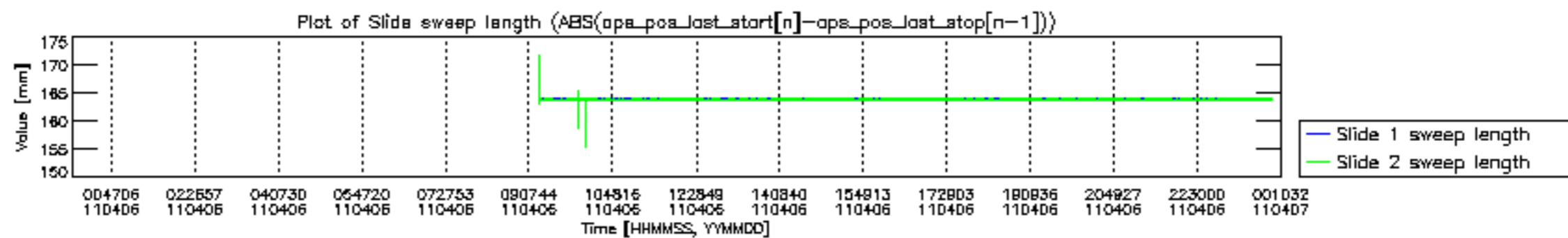


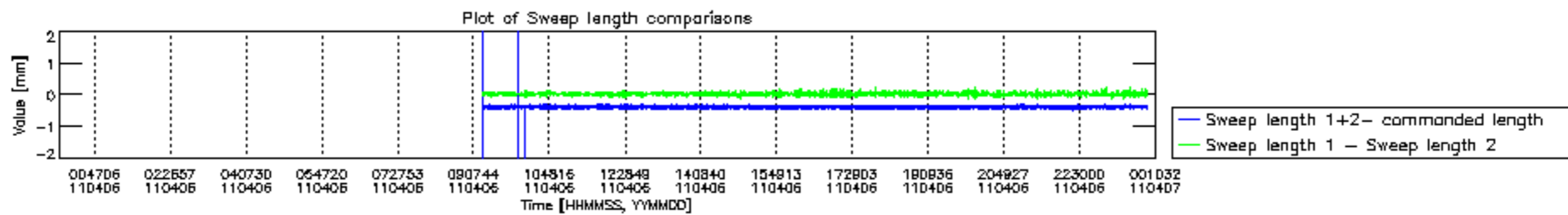


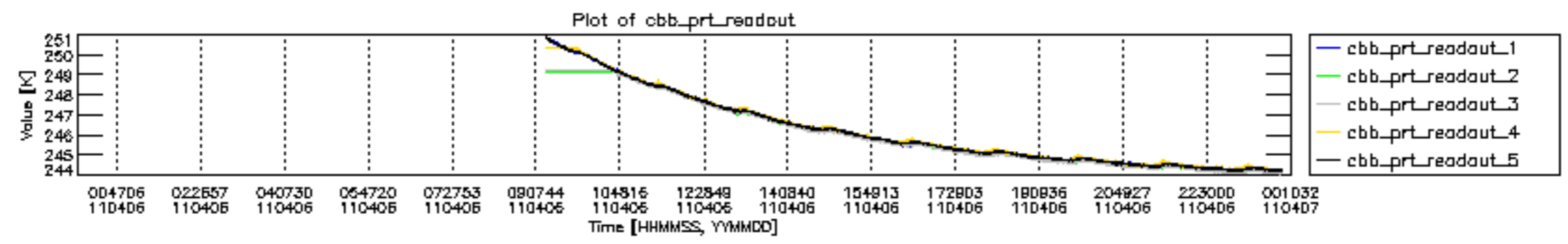


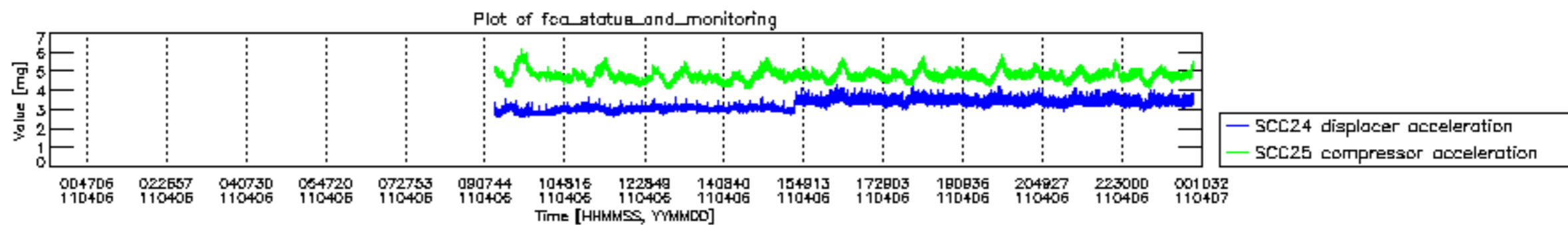












MIPNLOP_MIPSOUPAC_aux_fields_igm_cal, channel statistics plot
 Colour indicates value.

