

## 0. MIPAS Daily Report for level 0 products

### [0.1 General Info](#)

### [0.2 Instrument Operational Performance Parameters](#)

### [0.3 ADF monitoring](#)

## 0.1 General Info

This report contains a daily analysis on parameters extracted from MIPAS level 0 data (The MIP\_NL\_\_0P product).

### 0.1.1 Report summary

The table below shows general characteristics of the data that are included into this report.

Item	Value
Report version	v1.6 08-11-2010
Time of report generation	03APR2011 05:24:52
Data source version	KSPT_L0/4504-N
Processing scope for products	30MAR2011 00:00:00 to 31MAR2011 00:00:00
Start time of first product within scope	30MAR2011 01:00:18
Stop time of last product within scope	31MAR2011 00:23:11
Total number of level 0 products	15
Number of level 0 products with errors	1

### 0.1.2 Product Quality Indicators per product

The following table shows a summary for each product used in this report.

#	Product name	Start time	Stop time	Prod err	ISP err sign	ISP miss sign	ISP disc sign	rs sign
0	MIP_NL__OPNPDE20110330_010018_000102183101_00045_47473_3333.N1	30MAR2011 01:00:18	30MAR2011 03:50:36	0	0	0	0	0
1	MIP_NL__OPNPDE20110330_035002_000062613101_00047_47475_3334.N1	30MAR2011 03:50:02	30MAR2011 05:34:23	0	0	0	0	0
2	MIP_NL__OPNPDE20110330_053349_000060063101_00048_47476_3335.N1	30MAR2011 05:33:49	30MAR2011 07:13:55	0	0	0	0	0
3	MIP_NL__OPNPDK20110330_071322_000040613101_00049_47477_4694.N1	30MAR2011 07:13:22	30MAR2011 08:21:03	0	0	0	0	0
4	MIP_NL__OPNPDK20110330_082029_000061573101_00050_47478_4702.N1	30MAR2011 08:20:29	30MAR2011 10:03:06	1	1	0	0	0
5	MIP_NL__OPNPDK20110330_085007_000043793101_00050_47478_4696.N1	30MAR2011 08:50:07	30MAR2011 10:03:06	0	0	0	0	0
6	MIP_NL__OPNPDK20110330_100228_000059643101_00051_47479_4697.N1	30MAR2011 10:02:28	30MAR2011 11:41:53	0	0	0	0	0
7	MIP_NL__OPNPDK20110330_114111_000059293101_00052_47480_4698.N1	30MAR2011 11:41:11	30MAR2011 13:19:59	0	0	0	0	0
8	MIP_NL__OPNPDK20110330_131928_000059413101_00053_47481_4699.N1	30MAR2011 13:19:28	30MAR2011 14:58:29	0	0	0	0	0
9	MIP_NL__OPNPDK20110330_145706_000057853101_00054_47482_4700.N1	30MAR2011 14:57:06	30MAR2011 16:33:30	0	0	0	0	0
10	MIP_NL__OPNPDK20110330_163232_000059773101_00055_47483_4701.N1	30MAR2011 16:32:32	30MAR2011 18:12:08	0	0	0	0	0
11	MIP_NL__OPNPDK20110330_181110_000059413101_00056_47484_4703.N1	30MAR2011 18:11:10	30MAR2011 19:50:11	0	0	0	0	0
12	MIP_NL__OPNPDE20110330_194831_000041453101_00057_47485_3336.N1	30MAR2011 19:48:31	30MAR2011 20:57:35	0	0	0	0	0
13	MIP_NL__OPNPDE20110330_205627_000064453101_00057_47485_3337.N1	30MAR2011 20:56:27	30MAR2011 22:43:51	0	0	0	0	0
14	MIP_NL__OPNPDE20110330_224251_000060213101_00058_47486_3338.N1	30MAR2011 22:42:51	31MAR2011 00:23:11	0	0	0	0	0

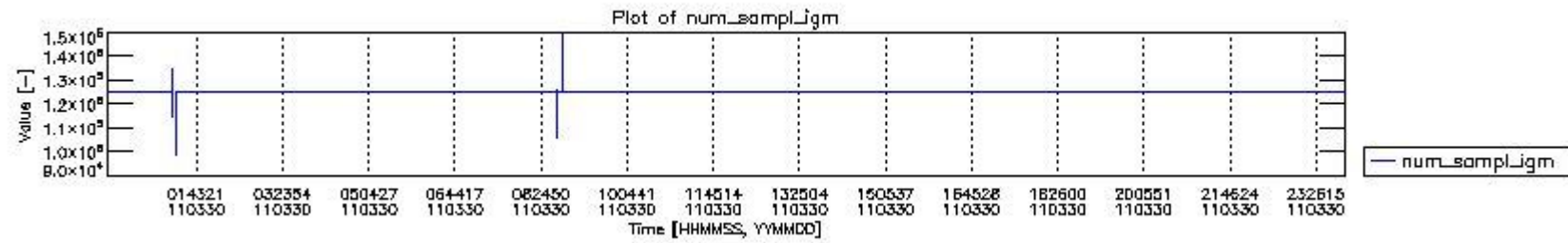
## 0.2 Instrument Operational Performance Parameters

The following plots give an overview of various instrument parameters for this day. The instrument parameters are part of the auxiliary data field within the source packets of the MIP\_NL\_\_0P product. The auxiliary data is normally included twice per interferogram. Note that only the first packet is currently included in monitoring.

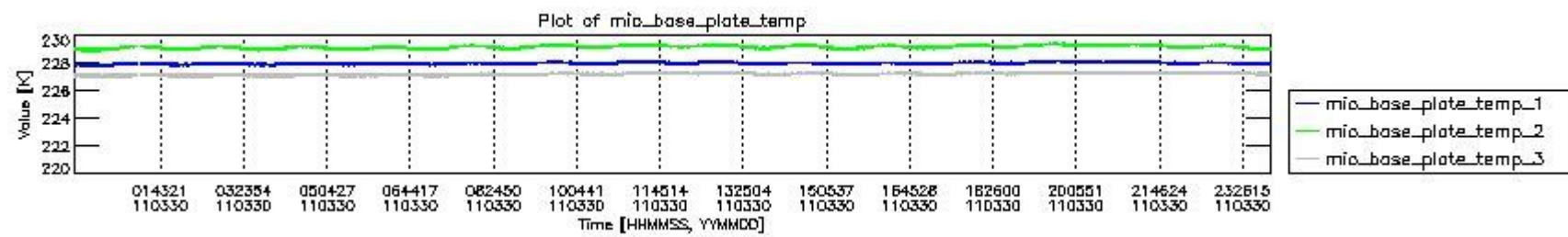
The following table shows the counts of various interferogram number of samples

Number of igm samples	Count [#]	Count [%]
98847	1	0.0024130692
106120	1	0.0024130692
107572	1	0.0024130692

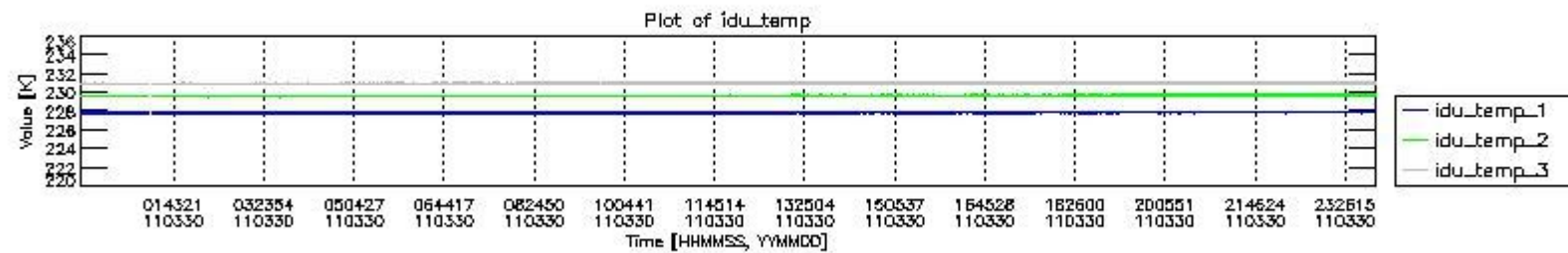
114818	1	0.0024130692
123398	1	0.0024130692
124099	1	0.0024130692
124800	38652	93.269950
124803	2777	6.7010931
124968	1	0.0024130692
126252	1	0.0024130692
127308	1	0.0024130692
134950	1	0.0024130692
147440	1	0.0024130692
149948	1	0.0024130692



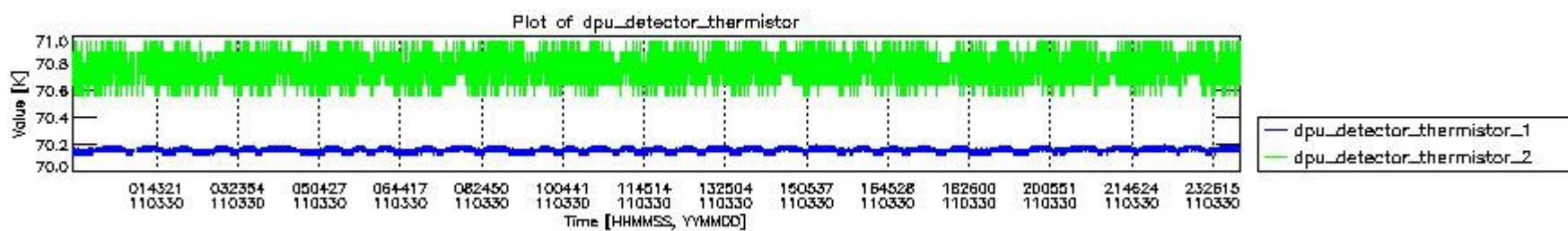
mipas\_daily\_report\_level0\_KSPT\_L0\_4504\_N\_20110330\_0.PNG



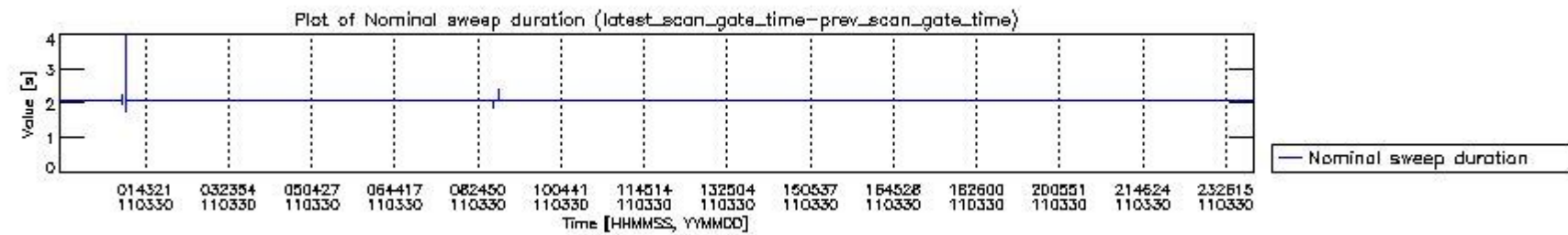
mipas\_daily\_report\_level0\_KSPT\_L0\_4504\_N\_20110330\_1.PNG



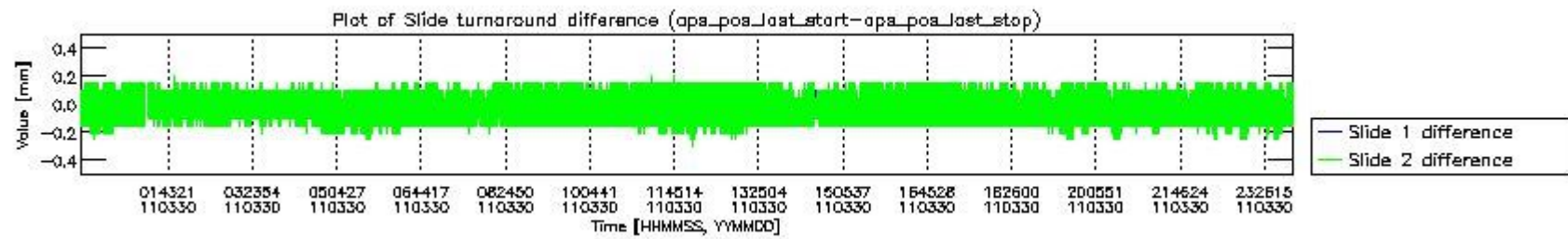
mipas\_daily\_report\_level0\_KSPT\_L0\_4504\_N\_20110330\_2.PNG



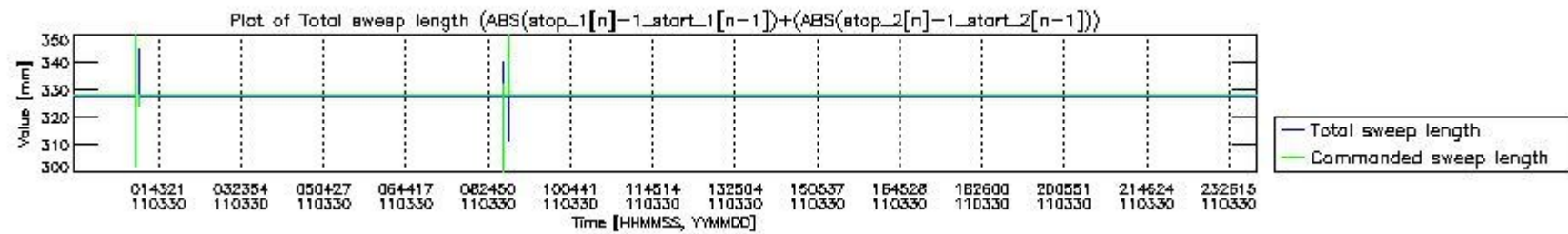
mipas\_daily\_report\_level0\_KSPT\_L0\_4504\_N\_20110330\_3.PNG



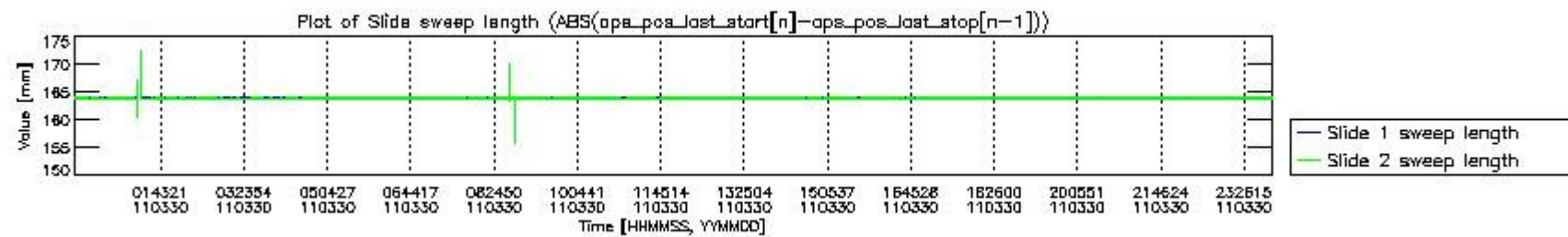
mipas\_daily\_report\_level0\_KSPT\_L0\_4504\_N\_20110330\_4.PNG



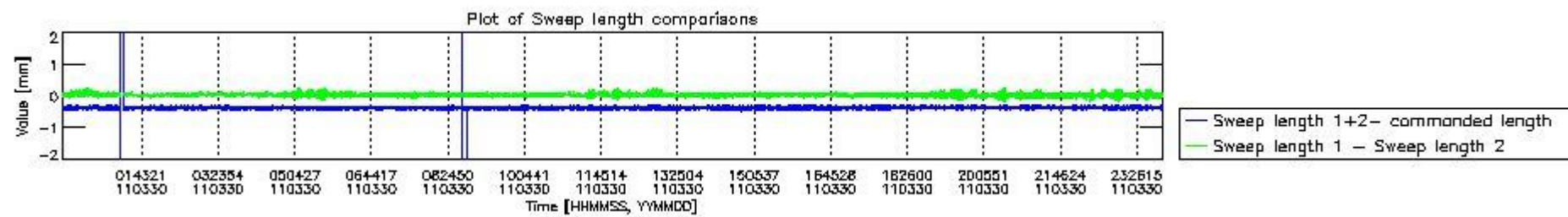
mipas\_daily\_report\_level0\_KSPT\_L0\_4504\_N\_20110330\_5.PNG



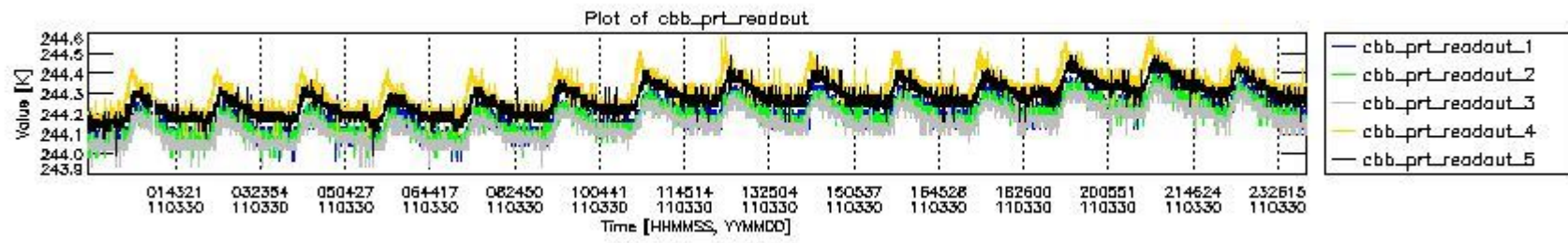
mipas\_daily\_report\_level0\_KSPT\_L0\_4504\_N\_20110330\_6.PNG



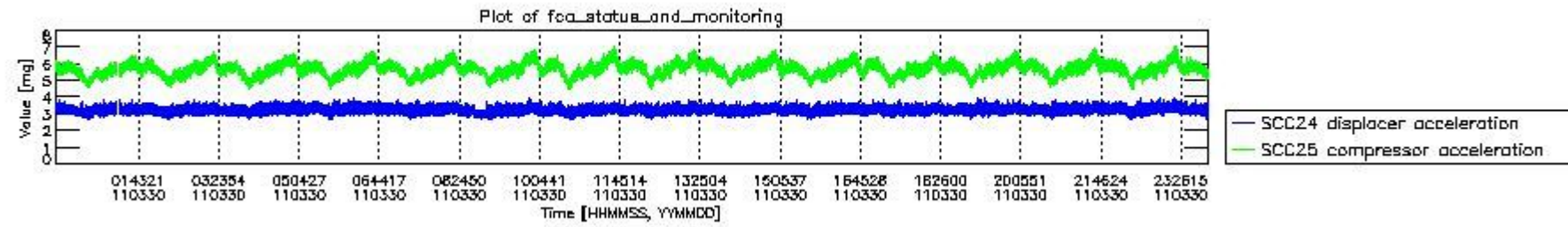
mipas\_daily\_report\_level0\_KSPT\_L0\_4504\_N\_20110330\_7.PNG



mipas\_daily\_report\_level0\_KSPT\_L0\_4504\_N\_20110330\_8.PNG



mipas\_daily\_report\_level0\_KSPT\_L0\_4504\_N\_20110330\_9.PNG

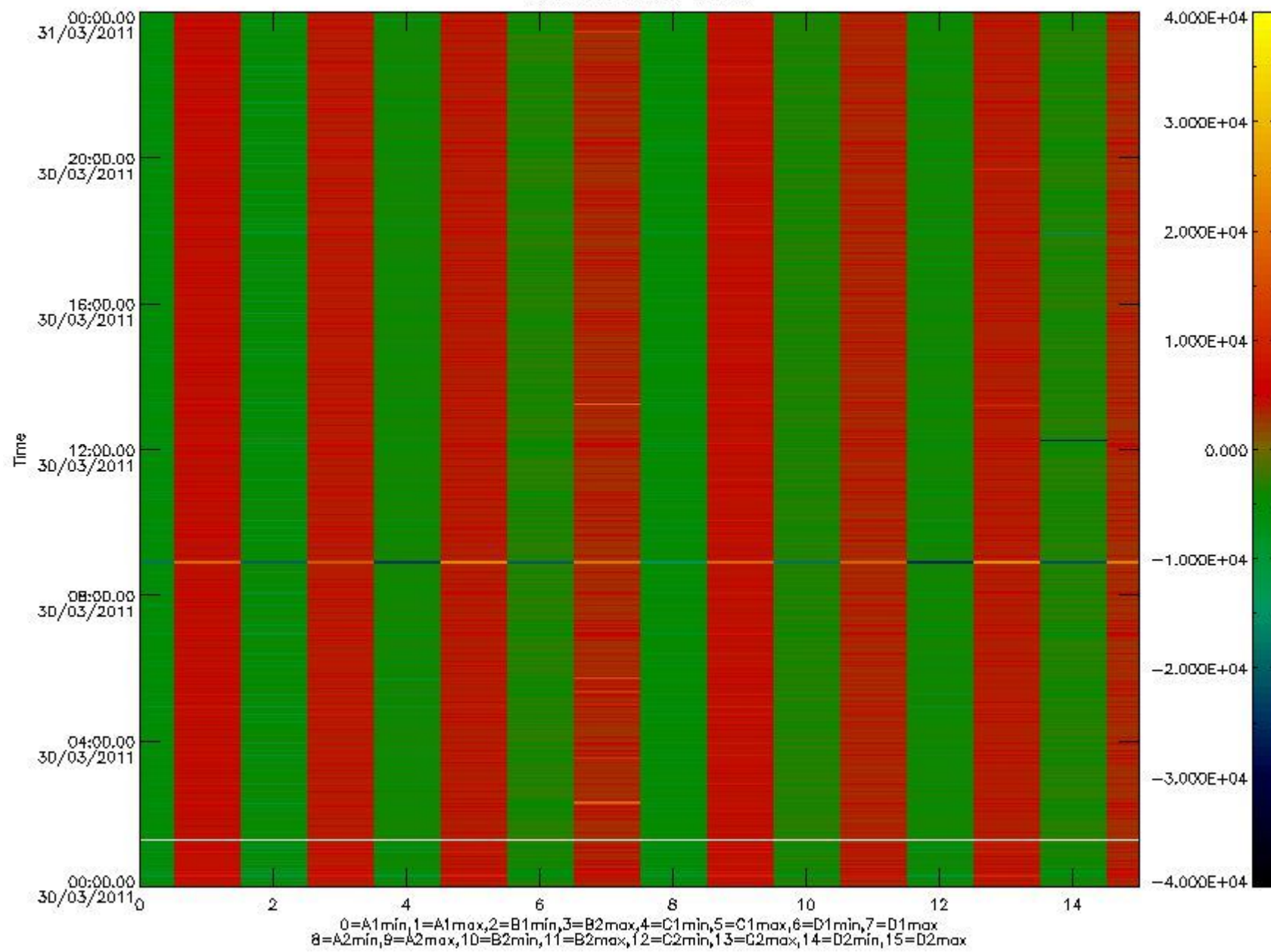


mipas\_daily\_report\_level0\_KSPT\_L0\_4504\_N\_20110330\_10.PNG

The following table shows channel statistics for all channels for this day.

Channel	Min	Max	ADC
A1	-17921	18972	16bit
B1	-20125	17360	16bit
C1	-24340	24218	16bit
D1	-22311	32767	16bit
A2	-15556	19165	16bit
B2	-18316	17958	16bit
C2	-25332	24929	16bit
D2	-32768	22172	16bit

MIPNLOP\_MIPSOUPAC\_aux\_fields\_igm\_cal, channel statistics plot  
Colour indicates value.



mipas\_daily\_report\_level0\_KSPT\_L0\_4504\_N\_20110330\_11.PNG

### 0.3 ADF monitoring

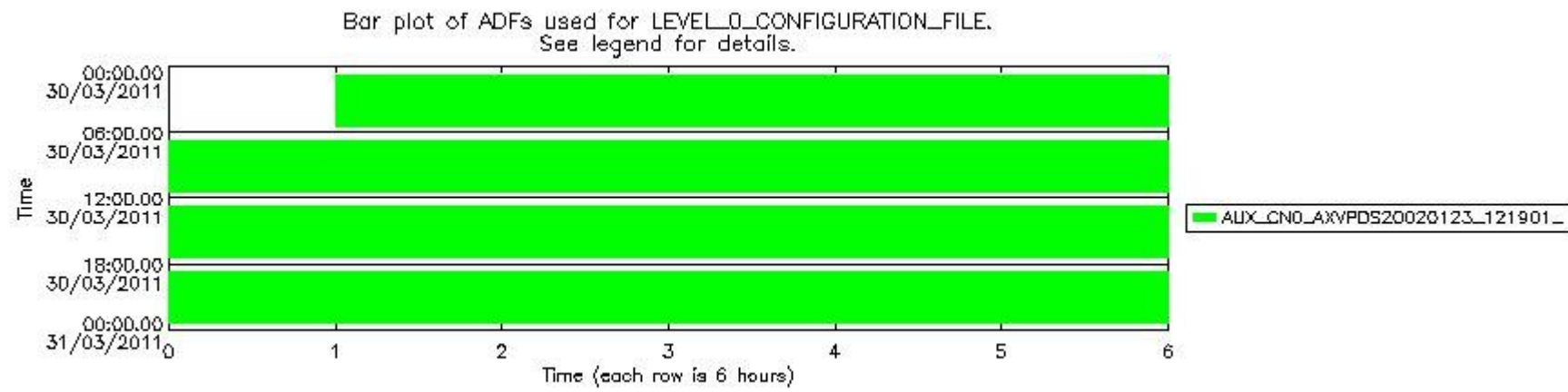
The use of ADFs is shown in two ways:

1. By means of two tables that can be used to find the ADF used for a specific product.
2. By means of plots that show changes in ADF using colours.

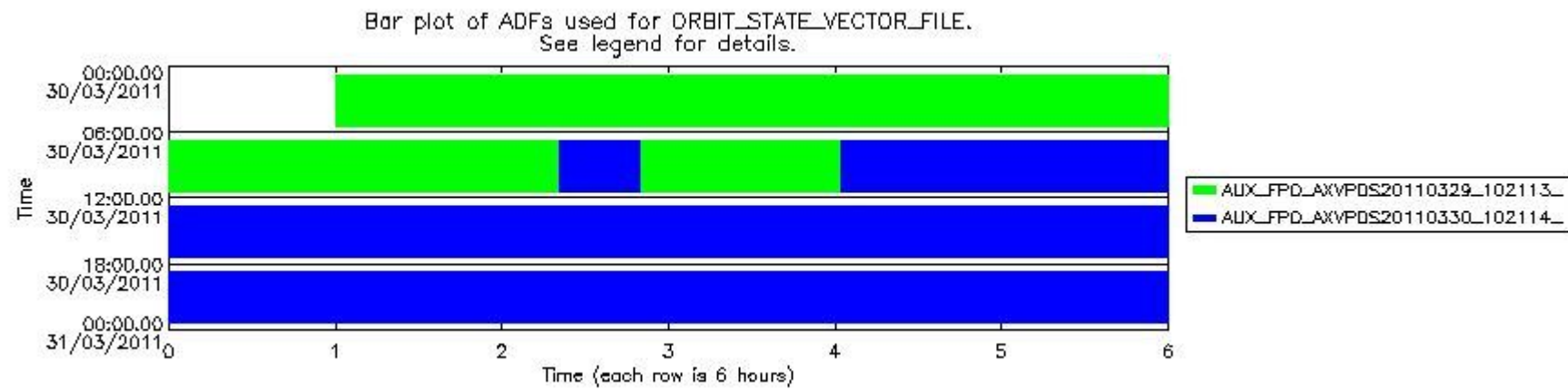
Number	ADF
0	AUX_CN0_AXVPDS20020123_121901_20020101_000000_20200101_000000
1	AUX_FPO_AXVPDS20110329_102113_20110328_190725_20110407_212114
2	AUX_FPO_AXVPDS20110330_102114_20110329_183041_20110408_204430

Number	Product name	#CN0	#FPO
--------	--------------	------	------

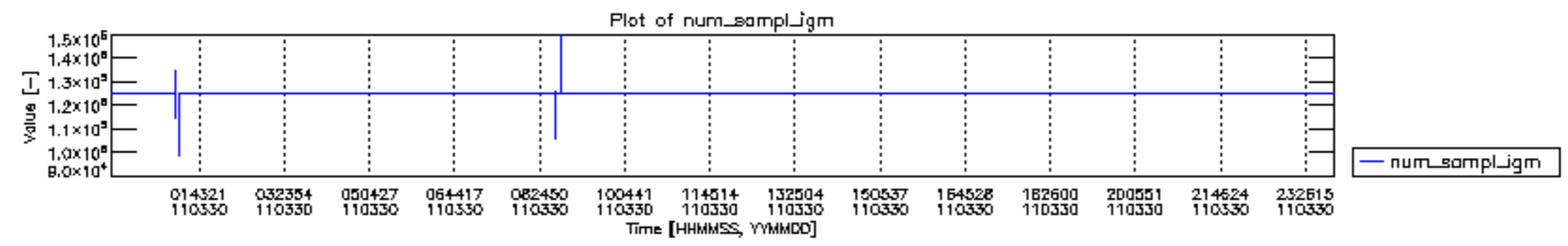
0	MIP_NL__0PNPDE20110330_010018_000102183101_00045_47473_3333.N1	0	1
1	MIP_NL__0PNPDE20110330_035002_000062613101_00047_47475_3334.N1	0	1
2	MIP_NL__0PNPDE20110330_053349_000060063101_00048_47476_3335.N1	0	1
3	MIP_NL__0PNPDK20110330_071322_000040613101_00049_47477_4694.N1	0	1
4	MIP_NL__0PNPDK20110330_082029_000061573101_00050_47478_4702.N1	0	2
5	MIP_NL__0PNPDK20110330_085007_000043793101_00050_47478_4696.N1	0	1
6	MIP_NL__0PNPDK20110330_100228_000059643101_00051_47479_4697.N1	0	2
7	MIP_NL__0PNPDK20110330_114111_000059293101_00052_47480_4698.N1	0	2
8	MIP_NL__0PNPDK20110330_131928_000059413101_00053_47481_4699.N1	0	2
9	MIP_NL__0PNPDK20110330_145706_000057853101_00054_47482_4700.N1	0	2
10	MIP_NL__0PNPDK20110330_163232_000059773101_00055_47483_4701.N1	0	2
11	MIP_NL__0PNPDK20110330_181110_000059413101_00056_47484_4703.N1	0	2
12	MIP_NL__0PNPDE20110330_194831_000041453101_00057_47485_3336.N1	0	2
13	MIP_NL__0PNPDE20110330_205627_000064453101_00057_47485_3337.N1	0	2
14	MIP_NL__0PNPDE20110330_224251_000060213101_00058_47486_3338.N1	0	2

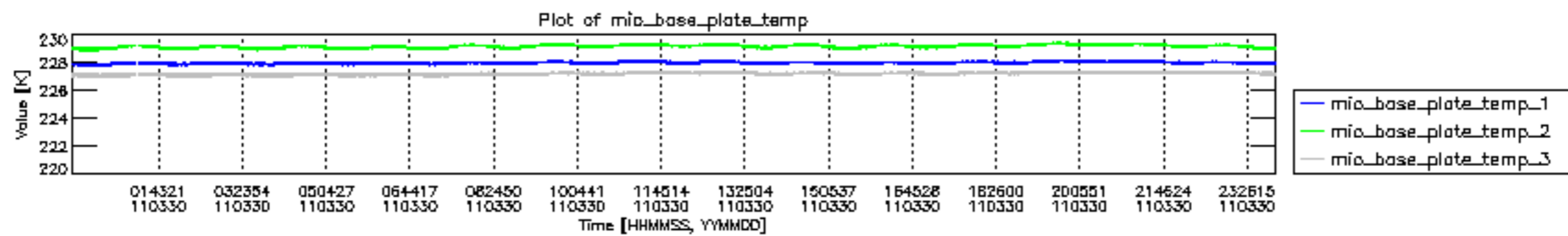


mipas\_daily\_report\_level0\_KSPT\_L0\_4504\_N\_20110330\_12.PNG

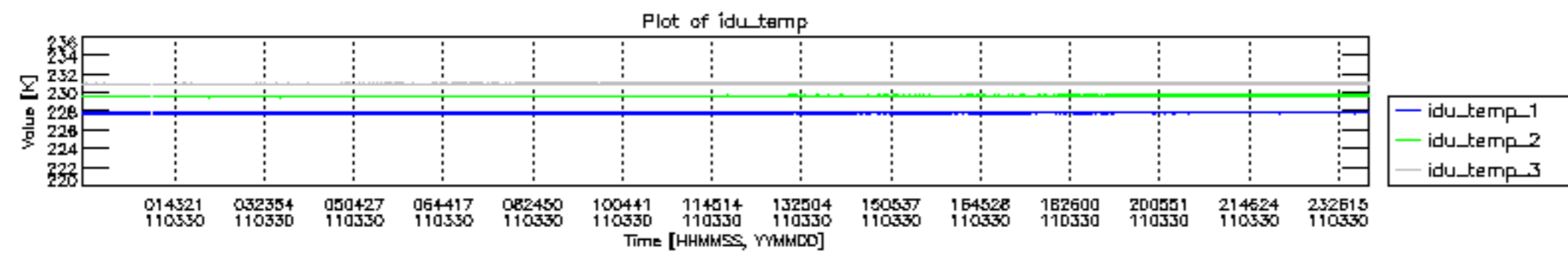


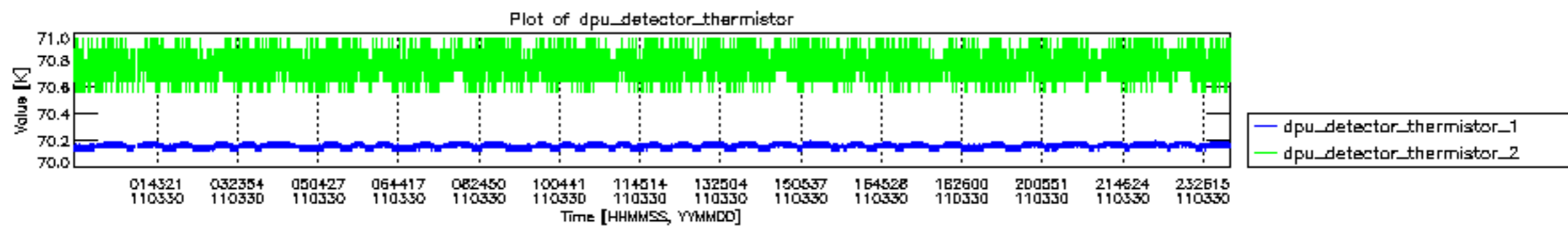
mipas\_daily\_report\_level0\_KSPT\_L0\_4504\_N\_20110330\_13.PNG

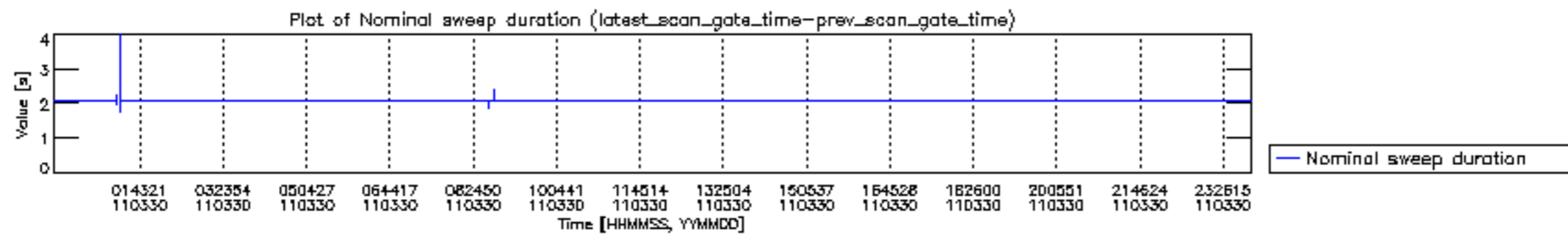


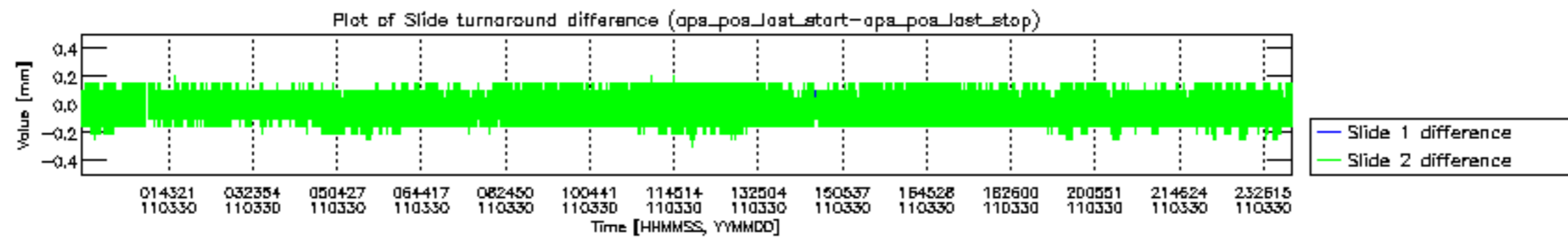


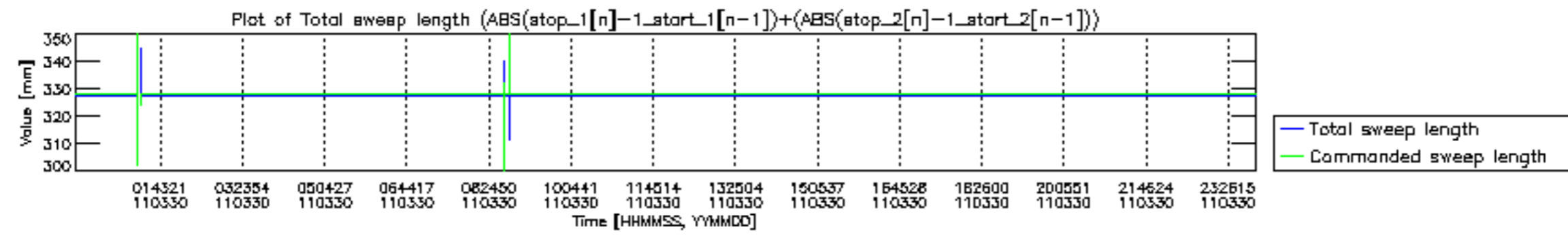


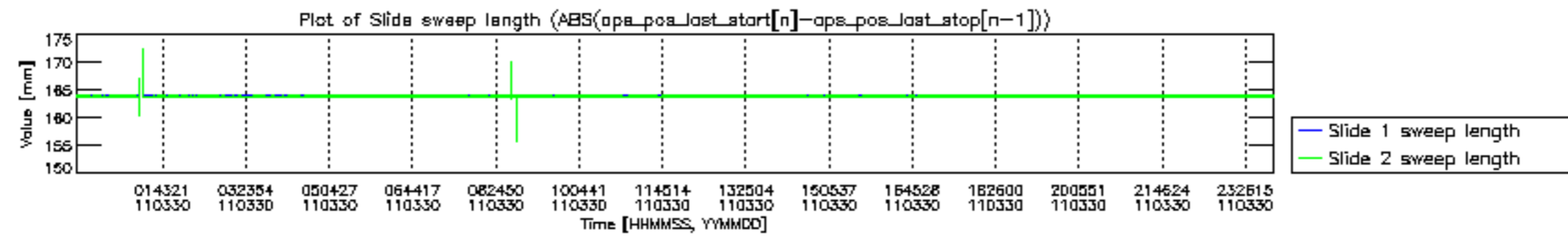


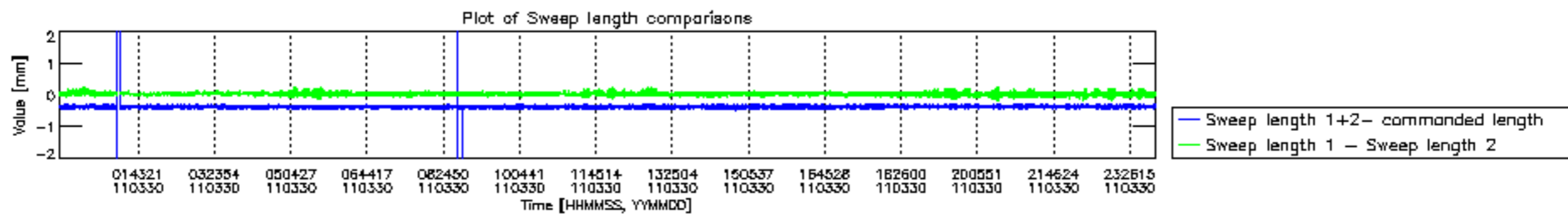


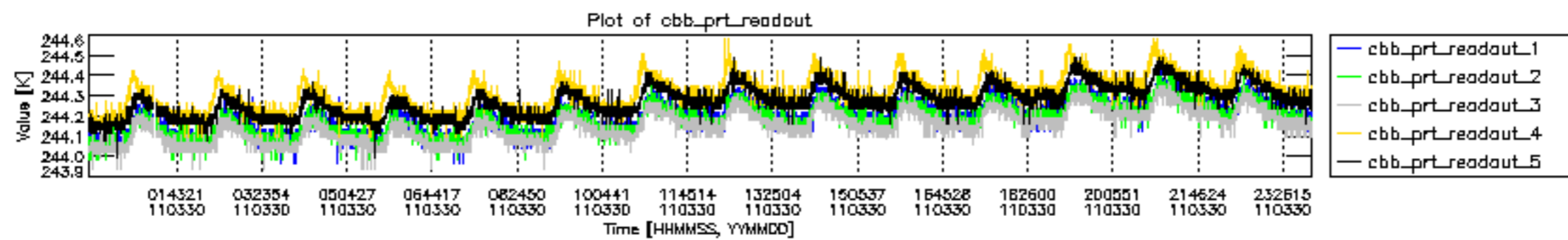




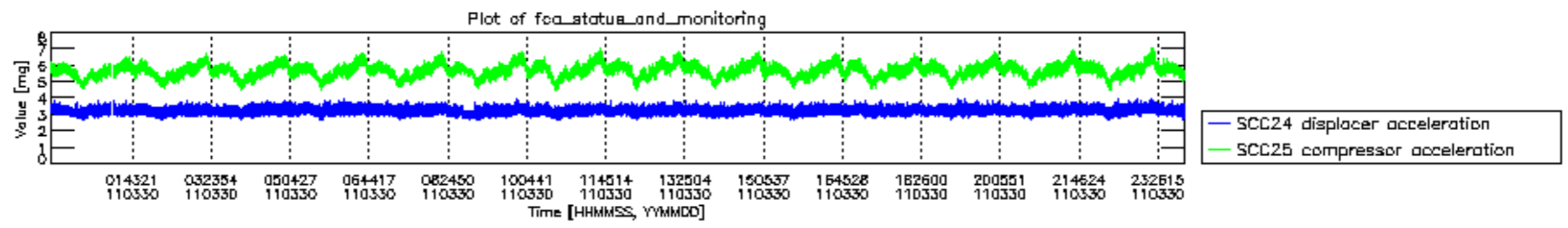












MIPNLOP\_MIPSOUPAC\_aux\_fields\_igm\_cal, channel statistics plot  
 Colour indicates value.

